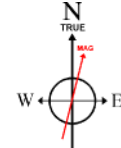


BONANZA CREEK OIL COMPANY

Location: COLORADO Slot: SLOT#06 STATE PRONGHORN W-32-31MRLNB (1311'FNL & 713'FEL, SEC.32)
Field: WELD COUNTY Well: STATE PRONGHORN W-32-31MRLNB
Facility: SEC.32-T5N-R61W Wellbore: STATE PRONGHORN W-32-31MRLNB PWB

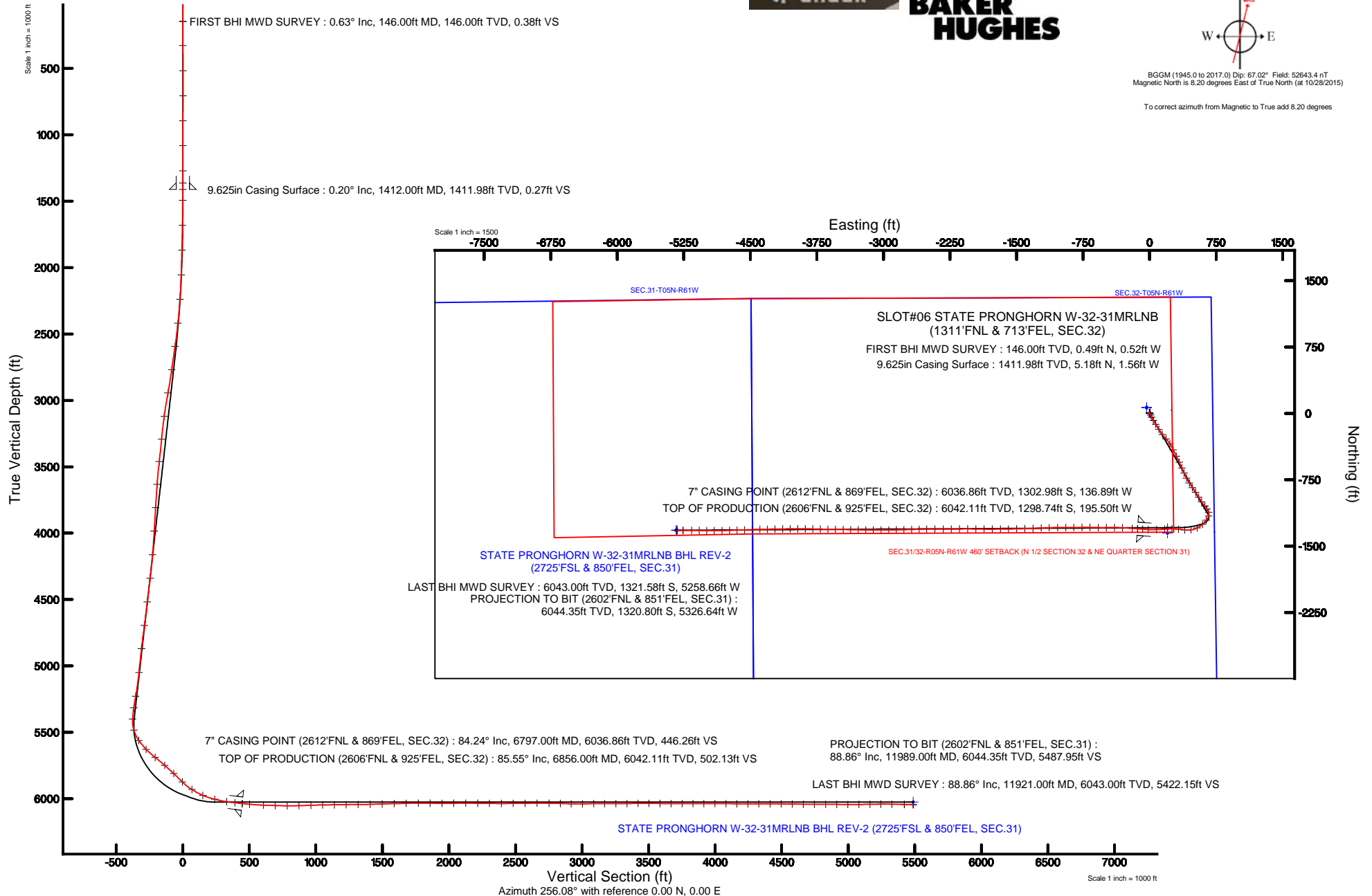
Plot reference wellpath is STATE PRONGHORN W-32-31MRLNB PWB (REV-C.0)

True vertical depths are referenced to XTREME 22 (17KB) (RKB)	Grid System: NAD83 / Lambert Colorado SP, Northern Zone (501), US feet
Measured depths are referenced to XTREME 22 (17KB) (RKB)	North Reference: True north
XTREME 22 (17KB) (RKB) to Mean Sea Level: 4582 feet	Scale: True distance
Mean Sea Level to Mud line (At Slot: SLOT#06 STATE PRONGHORN W-32-31MRLNB (1311'FNL & 713'FEL, SEC.32): 0 feet	Depths are in feet
Coordinates are in feet referenced to Slot	Created by: ingmjmr on 1/26/2016



BGGM (1945.0 to 2017.0) Dip: 67.02° Field: 52643.4 nT
Magnetic North is 8.20 degrees East of True North (at 10/28/2015)

To correct azimuth from Magnetic to True add 8.20 degrees





Actual Wellpath Report

STATE PRONGHORN W-32-31MRLNB AWB

Page 1 of 6



REFERENCE WELLPATH IDENTIFICATION

Operator	BONANZA CREEK OIL COMPANY	Slot	SLOT#06 STATE PRONGHORN W-32-31MRLNB (1311'FNL & 713'FEL, SEC.32)
Area	COLORADO	Well	STATE PRONGHORN W-32-31MRLNB
Field	WELD COUNTY	Wellbore	STATE PRONGHORN W-32-31MRLNB AWB
Facility	SEC.32-T5N-R61W		

REPORT SETUP INFORMATION

Projection System	NAD83 / Lambert Colorado SP, Northern Zone (501), US feet	Software System	WellArchitect® 4.1.1
North Reference	True	User	Ingmjmr
Scale	0.999959	Report Generated	1/26/2016 at 10:37:27 AM
Convergence at slot	0.82° East	Database/Source file	WA_DEN_Denver_Defn/STATE_PRONGHORN_W-32-31MRLNB_AWB.xml

WELLPATH LOCATION

	Local coordinates		Grid coordinates		Geographic coordinates	
	North[ft]	East[ft]	Easting[US ft]	Northing[US ft]	Latitude	Longitude
Slot Location	-36.43	-245.24	3354994.81	1376888.33	40°21'39.456"N	104°13'33.852"W
Facility Reference Pt			3355239.49	1376928.28	40°21'39.816"N	104°13'30.684"W
Field Reference Pt			3335925.10	1457282.25	40°34'56.460"N	104°17'26.016"W

WELLPATH DATUM

Calculation method	Minimum curvature	XTREME 22 (17'KB) (RKB) to Facility Vertical Datum	4582.00ft
Horizontal Reference Pt	Slot	XTREME 22 (17'KB) (RKB) to Mean Sea Level	4582.00ft
Vertical Reference Pt	XTREME 22 (17'KB) (RKB)	XTREME 22 (17'KB) (RKB) to Mud Line at Slot (SLOT#06 STATE PRONGHORN W-32-31MRLNB (1311'FNL & 713'FEL, SEC.32))	4582.00ft
MD Reference Pt	XTREME 22 (17'KB) (RKB)	Section Origin	N 0.00, E 0.00 ft
Field Vertical Reference	Mean Sea Level	Section Azimuth	256.08°



Actual Wellpath Report

STATE PRONGHORN W-32-31MRLNB AWB

Page 2 of 6



REFERENCE WELLPATH IDENTIFICATION

Operator	BONANZA CREEK OIL COMPANY	Slot	SLOT#06 STATE PRONGHORN W-32-31MRLNB (1311'FNL & 713'FEL, SEC.32)
Area	COLORADO	Well	STATE PRONGHORN W-32-31MRLNB
Field	WELD COUNTY	Wellbore	STATE PRONGHORN W-32-31MRLNB AWB
Facility	SEC.32-T5N-R61W		

WELLPATH DATA (106 stations) † = interpolated/extrapolated station

MD [ft]	Inclination [°]	Azimuth [°]	TVD [ft]	Vert Sect [ft]	North [ft]	East [ft]	DLS [°/100ft]	Comments
0.00†	0.000	313.410	0.00	0.00	0.00	0.00	0.00	
17.00	0.000	313.410	17.00	0.00	0.00	0.00	0.00	
146.00	0.630	313.410	146.00	0.38	0.49	-0.52	0.49	FIRST BHI MWD SURVEY
328.00	0.420	303.240	327.99	1.38	1.54	-1.80	0.13	
517.00	0.290	317.940	516.99	2.07	2.28	-2.70	0.08	
706.00	0.280	19.380	705.98	2.05	3.07	-2.87	0.15	
894.00	0.280	48.050	893.98	1.39	3.81	-2.37	0.07	
1082.00	0.220	20.490	1081.98	0.78	4.45	-1.90	0.07	
1271.00	0.110	343.910	1270.98	0.58	4.97	-1.83	0.08	
1364.00	0.200	57.280	1363.98	0.43	5.14	-1.72	0.21	
1494.00	0.320	128.090	1493.98	-0.01	5.04	-1.24	0.24	
1682.00	4.220	152.040	1681.80	-2.01	-1.40	2.42	2.09	
1870.00	7.550	154.910	1868.78	-6.08	-18.70	10.90	1.78	
2059.00	9.890	155.710	2055.58	-11.41	-44.74	22.84	1.24	
2246.00	13.980	149.110	2238.51	-20.90	-78.78	41.06	2.30	
2434.00	18.260	148.420	2419.07	-36.48	-123.38	68.15	2.28	
2622.00	23.820	146.520	2594.47	-58.14	-180.18	104.55	2.98	
2810.00	20.780	144.900	2768.39	-82.91	-239.14	144.67	1.65	
2998.00	20.200	135.710	2944.55	-111.38	-289.67	186.53	1.74	
3187.00	23.030	147.770	3120.33	-139.51	-344.34	229.06	2.78	
3375.00	25.630	154.900	3291.65	-158.96	-412.30	265.93	2.08	
3562.00	24.820	152.100	3460.82	-176.29	-483.61	301.46	0.77	
3749.00	23.090	156.240	3631.72	-192.05	-551.87	334.60	1.29	
3938.00	20.800	156.510	3807.02	-203.96	-616.58	362.91	1.21	
4127.00	18.450	156.180	3985.02	-214.69	-674.72	388.37	1.24	
4315.00	19.970	153.430	4162.56	-226.84	-730.65	414.75	0.94	
4503.00	20.340	146.570	4339.07	-244.79	-786.64	447.11	1.27	
4692.00	18.120	145.510	4517.51	-266.09	-838.29	481.86	1.19	
4880.00	21.220	145.760	4694.52	-288.18	-890.52	517.56	1.65	
5068.00	20.360	148.750	4870.28	-309.75	-946.61	553.67	0.73	
5258.00	17.120	146.360	5050.19	-329.04	-998.16	586.32	1.75	
5447.00	21.190	139.570	5228.71	-353.68	-1047.35	623.90	2.45	
5542.00	26.550	148.880	5315.58	-367.64	-1078.63	646.04	6.88	
5636.00	26.560	157.770	5399.70	-376.90	-1116.08	664.85	4.22	
5730.00	29.900	198.690	5483.27	-367.22	-1158.13	665.30	20.53	
5825.00	40.850	217.790	5560.85	-329.85	-1205.40	638.51	16.27	
5919.00	48.520	225.880	5627.69	-275.16	-1254.32	594.29	10.15	
6014.00	51.810	245.670	5688.89	-207.27	-1294.72	534.36	16.33	
6108.00	49.360	262.150	5748.82	-135.17	-1314.90	465.08	13.77	
6201.00	48.030	276.050	5810.37	-67.40	-1316.07	395.55	11.31	
6295.00	47.000	276.600	5873.86	-2.36	-1308.44	326.65	1.18	
6389.00	58.290	270.360	5930.84	68.86	-1304.22	252.23	13.11	
6484.00	66.900	265.600	5974.54	151.30	-1307.33	168.07	10.09	
6579.00	76.720	267.430	6004.17	239.94	-1312.77	78.09	10.50	
6674.00	81.880	273.190	6021.81	330.34	-1312.22	-15.18	8.06	



Actual Wellpath Report

STATE PRONGHORN W-32-31MRLNB AWB

Page 3 of 6



REFERENCE WELLPATH IDENTIFICATION

Operator	BONANZA CREEK OIL COMPANY	Slot	SLOT#06 STATE PRONGHORN W-32-31MRLNB (1311'FNL & 713'FEL, SEC.32)
Area	COLORADO	Well	STATE PRONGHORN W-32-31MRLNB
Field	WELD COUNTY	Wellbore	STATE PRONGHORN W-32-31MRLNB AWB
Facility	SEC.32-T5N-R61W		

WELLPATH DATA (106 stations) † = interpolated/extrapolated station

MD [ft]	Inclination [°]	Azimuth [°]	TVD [ft]	Vert Sect [ft]	North [ft]	East [ft]	DLS [°/100ft]	Comments
6739.00	82.950	274.920	6030.39	391.63	-1307.66	-79.45	3.11	
6797.00†	84.240	274.404	6036.86	446.26	-1302.98	-136.89	2.39	7" CASING POINT (2612'FNL & 869'FEL, SEC.32)
6856.00†	85.552	273.881	6042.11	502.13	-1298.74	-195.50	2.39	TOP OF PRODUCTION (2606'FNL & 925'FEL, SEC.32)
6966.00	88.000	272.910	6048.30	606.97	-1292.23	-305.13	2.39	
7057.00	88.180	270.290	6051.33	694.60	-1289.69	-396.03	2.88	
7149.00	89.720	269.020	6053.02	784.01	-1290.25	-488.01	2.17	
7240.00	91.320	271.240	6052.19	872.28	-1290.04	-579.00	3.01	
7333.00	92.340	271.060	6049.22	962.03	-1288.18	-671.93	1.11	
7424.00	90.860	269.290	6046.68	1050.25	-1287.90	-762.89	2.53	
7516.00	90.310	269.710	6045.74	1139.74	-1288.70	-854.88	0.75	
7607.00	91.020	269.490	6044.69	1228.21	-1289.34	-945.87	0.82	
7699.00	89.910	269.930	6043.94	1317.62	-1289.80	-1037.86	1.30	
7792.00	92.220	268.320	6042.21	1408.19	-1291.22	-1130.83	3.03	
7884.00	91.510	267.470	6039.22	1498.20	-1294.60	-1222.72	1.20	
7976.00	91.290	267.340	6036.97	1588.38	-1298.76	-1314.59	0.28	
8068.00	91.390	267.980	6034.82	1678.48	-1302.52	-1406.49	0.70	
8161.00	90.060	269.170	6033.64	1769.27	-1304.83	-1499.45	1.92	
8253.00	89.450	269.280	6034.03	1858.86	-1306.08	-1591.44	0.67	
8344.00	89.570	269.460	6034.81	1947.42	-1307.08	-1682.43	0.24	
8436.00	90.860	269.450	6034.47	2036.92	-1307.95	-1774.43	1.40	
8528.00	90.090	270.680	6033.70	2126.19	-1307.85	-1866.42	1.58	
8621.00	89.200	271.330	6034.28	2216.05	-1306.22	-1959.40	1.19	
8712.00	89.290	269.950	6035.48	2304.12	-1305.20	-2050.39	1.52	
8805.00	90.030	269.590	6036.03	2394.48	-1305.57	-2143.38	0.88	
8896.00	90.430	269.520	6035.67	2482.97	-1306.28	-2234.38	0.45	
8988.00	90.830	269.610	6034.65	2572.43	-1306.98	-2326.37	0.45	
9081.00	90.150	270.380	6033.86	2662.70	-1306.99	-2419.37	1.10	
9173.00	89.380	269.010	6034.24	2752.11	-1307.48	-2511.36	1.71	
9259.00	88.490	268.620	6035.83	2835.98	-1309.25	-2597.33	1.13	
9344.00	88.740	268.650	6037.89	2918.93	-1311.28	-2682.28	0.30	
9431.00	90.620	268.250	6038.38	3003.90	-1313.63	-2769.24	2.21	
9517.00	90.860	269.400	6037.26	3087.77	-1315.39	-2855.22	1.37	
9602.00	89.820	269.950	6036.76	3170.39	-1315.88	-2940.21	1.38	
9689.00	89.570	269.790	6037.22	3254.88	-1316.07	-3027.21	0.34	
9775.00	91.110	269.680	6036.71	3338.45	-1316.47	-3113.20	1.80	
9860.00	91.200	270.710	6035.00	3420.87	-1316.18	-3198.19	1.22	
9945.00	89.380	270.940	6034.57	3503.06	-1314.96	-3283.17	2.16	
10031.00	88.710	271.010	6036.00	3586.16	-1313.50	-3369.15	0.78	
10116.00	90.180	271.080	6036.83	3668.28	-1311.95	-3454.13	1.73	
10202.00	89.720	270.780	6036.90	3751.40	-1310.55	-3540.12	0.64	
10287.00	89.970	271.140	6037.13	3833.55	-1309.13	-3625.10	0.52	
10372.00	90.680	271.370	6036.65	3915.59	-1307.26	-3710.08	0.88	
10457.00	89.750	271.020	6036.33	3997.65	-1305.49	-3795.06	1.17	
10543.00	89.480	270.360	6036.91	4080.87	-1304.46	-3881.05	0.83	
10628.00	88.730	269.620	6038.24	4163.36	-1304.47	-3966.04	1.24	



Actual Wellpath Report

STATE PRONGHORN W-32-31MRLNB AWB

Page 4 of 6



REFERENCE WELLPATH IDENTIFICATION

Operator	BONANZA CREEK OIL COMPANY	Slot	SLOT#06 STATE PRONGHORN W-32-31MRLNB (1311'FNL & 713'FEL, SEC.32)
Area	COLORADO	Well	STATE PRONGHORN W-32-31MRLNB
Field	WELD COUNTY	Wellbore	STATE PRONGHORN W-32-31MRLNB AWB
Facility	SEC.32-T5N-R61W		

WELLPATH DATA (106 stations)

MD [ft]	Inclination [°]	Azimuth [°]	TVD [ft]	Vert Sect [ft]	North [ft]	East [ft]	DLS [°/100ft]	Comments
10713.00	90.460	269.800	6038.84	4245.97	-1304.90	-4051.03	2.05	
10798.00	90.520	269.120	6038.11	4328.66	-1305.70	-4136.03	0.80	
10885.00	89.780	269.300	6037.88	4413.38	-1306.90	-4223.02	0.88	
10970.00	88.770	268.500	6038.96	4496.26	-1308.53	-4307.99	1.52	
11055.00	89.660	268.550	6040.12	4579.25	-1310.72	-4392.96	1.05	
11141.00	88.800	268.100	6041.28	4663.29	-1313.23	-4478.91	1.13	
11226.00	90.120	268.360	6042.08	4746.38	-1315.86	-4563.86	1.58	
11312.00	90.000	268.440	6041.99	4830.40	-1318.26	-4649.83	0.17	
11397.00	89.290	267.300	6042.52	4913.60	-1321.42	-4734.77	1.58	
11482.00	90.280	269.150	6042.83	4996.70	-1324.05	-4819.72	2.47	
11568.00	89.910	269.720	6042.69	5080.37	-1324.90	-4905.72	0.79	
11653.00	91.080	271.260	6041.96	5162.69	-1324.17	-4990.71	2.28	
11739.00	90.490	270.750	6040.78	5245.78	-1322.66	-5076.68	0.91	
11824.00	88.980	269.980	6041.17	5328.15	-1322.12	-5161.68	1.99	
11921.00	88.860	270.660	6043.00	5422.15	-1321.58	-5258.66	0.71	LAST BHI MWD SURVEY
11989.00	88.860	270.660	6044.35	5487.95	-1320.80	-5326.64	0.00	PROJECTION TO BIT (2602'FNL & 851'FEL, SEC.31)

HOLE & CASING SECTIONS - Ref Wellbore: STATE PRONGHORN W-32-31MRLNB AWB Ref Wellpath: STATE PRONGHORN W-32-31MRLNB AWB

String/Diameter	Start MD [ft]	End MD [ft]	Interval [ft]	Start TVD [ft]	End TVD [ft]	Start N/S [ft]	Start E/W [ft]	End N/S [ft]	End E/W [ft]
13.5in Open Hole	17.00	1412.00	1395.00	17.00	1411.98	0.00	0.00	5.18	-1.56
9.625in Casing Surface	17.00	1412.00	1395.00	17.00	1411.98	0.00	0.00	5.18	-1.56
8.75in Open Hole	1412.00	6807.00	5395.00	1411.98	6037.85	5.18	-1.56	-1302.22	-146.81
7in Casing Intermediate	17.00	6797.00	6780.00	17.00	6036.86	0.00	0.00	-1302.98	-136.89
6.125in Open Hole	6807.00	11989.00	5182.00	6037.85	6044.35	-1302.22	-146.81	-1320.80	-5326.64



Actual Wellpath Report

STATE PRONGHORN W-32-31MRLNB AWB

Page 5 of 6



REFERENCE WELLPATH IDENTIFICATION

Operator	BONANZA CREEK OIL COMPANY	Slot	SLOT#06 STATE PRONGHORN W-32-31MRLNB (1311'FNL & 713'FEL, SEC.32)
Area	COLORADO	Well	STATE PRONGHORN W-32-31MRLNB
Field	WELD COUNTY	Wellbore	STATE PRONGHORN W-32-31MRLNB AWB
Facility	SEC.32-T5N-R61W		

TARGETS

Name	TVD [ft]	North [ft]	East [ft]	Grid East [US ft]	Grid North [US ft]	Latitude	Longitude	Shape
SEC.31-T05N-R61W	0.00	65.58	-33.44	3354960.43	1376953.41	40°21'40.104"N	104°13'34.284"W	polygon
SEC.32-T05N-R61W	0.00	65.58	-33.44	3354960.43	1376953.41	40°21'40.104"N	104°13'34.284"W	polygon
SEC.31/32-R05N-R61W 460' SETBACK (N 1/2 SECTION 32 & NE QUARTER SECTION 31)	6025.00	65.58	-33.44	3354960.43	1376953.41	40°21'40.104"N	104°13'34.284"W	polygon
STATE PRONGHORN W-32-31MRLNB BHL ON PLAT (2650'FSL & 860'FEL, SEC.31)	6025.00	-1394.73	-5337.08	3349678.55	1375417.13	40°21'25.668"N	104°14'42.792"W	point
STATE PRONGHORN W-32-31MRLNB BHL REV-1 (2725'FSL & 860'FEL, SEC.31)	6025.00	-1320.00	-5337.08	3349677.47	1375491.85	40°21'26.406"N	104°14'42.792"W	point
STATE PRONGHORN W-32-31MRLNB BHL REV-2 (2725'FSL & 850'FEL, SEC.31)	6025.00	-1320.00	-5327.08	3349687.47	1375491.99	40°21'26.406"N	104°14'42.663"W	point
STATE PRONGHORN W-32-31MRLNB TARGET 1 (2649'FNL & 531'FEL, SEC.32)	6025.00	-1351.59	200.66	3355214.85	1375539.82	40°21'26.100"N	104°13'31.260"W	point
STATE PRONGHORN W-32-31MRLNB TARGET 2 (2599'FNL & 531'FEL, SEC.32)	6025.00	-1300.00	200.66	3355214.11	1375591.40	40°21'26.610"N	104°13'31.260"W	point
Ex.State -32# (200'R)	6780.00	-711.37	-2534.41	3352470.98	1376140.66	40°21'32.425"N	104°14'06.590"W	circle

WELLPATH COMPOSITION - Ref Wellbore: STATE PRONGHORN W-32-31MRLNB AWB Ref Wellpath: STATE PRONGHORN W-32-31MRLNB AWB

Start MD [ft]	End MD [ft]	Positional Uncertainty Model	Log Name/Comment	Wellbore
17.00	1364.00	Custom NaviTrak (MagCorr) (Rockies 0.03Gt model)	BHI MWD/NAVITRAK (MAGCORR) 13.5" HOLE <146-1364>	STATE PRONGHORN W-32-31MRLNB AWB
1364.00	6739.00	Custom NaviTrak (Standard) (Rockies 0.03Gt model)	BHI MWD/NAVITRAK (STD) 8.75" HOLE <1494-6739>	STATE PRONGHORN W-32-31MRLNB AWB
6739.00	11921.00	Custom NaviTrak (Standard) (Rockies 0.03Gt model)	BHI MWD/NAVITRAK (STD) 6.125" HOLE <6966-11921>	STATE PRONGHORN W-32-31MRLNB AWB
11921.00	11989.00	Blind Drilling (std)	Projection to bit	STATE PRONGHORN W-32-31MRLNB AWB



Actual Wellpath Report
STATE PRONGHORN W-32-31MRLNB AWB
Page 6 of 6



REFERENCE WELLPATH IDENTIFICATION			
Operator	BONANZA CREEK OIL COMPANY	Slot	SLOT#06 STATE PRONGHORN W-32-31MRLNB (1311'FNL & 713'FEL, SEC.32)
Area	COLORADO	Well	STATE PRONGHORN W-32-31MRLNB
Field	WELD COUNTY	Wellbore	STATE PRONGHORN W-32-31MRLNB AWB
Facility	SEC.32-T5N-R61W		

WELLPATH COMMENTS				
MD [ft]	Inclination [°]	Azimuth [°]	TVD [ft]	Comment
146.00	0.630	313.410	146.00	FIRST BHI MWD SURVEY
6797.00	84.240	274.404	6036.86	7" CASING POINT (2612'FNL & 869'FEL, SEC.32)
6856.00	85.552	273.881	6042.11	TOP OF PRODUCTION (2606'FNL & 925'FEL, SEC.32)
11921.00	88.860	270.660	6043.00	LAST BHI MWD SURVEY
11989.00	88.860	270.660	6044.35	PROJECTION TO BIT (2602'FNL & 851'FEL, SEC.31)