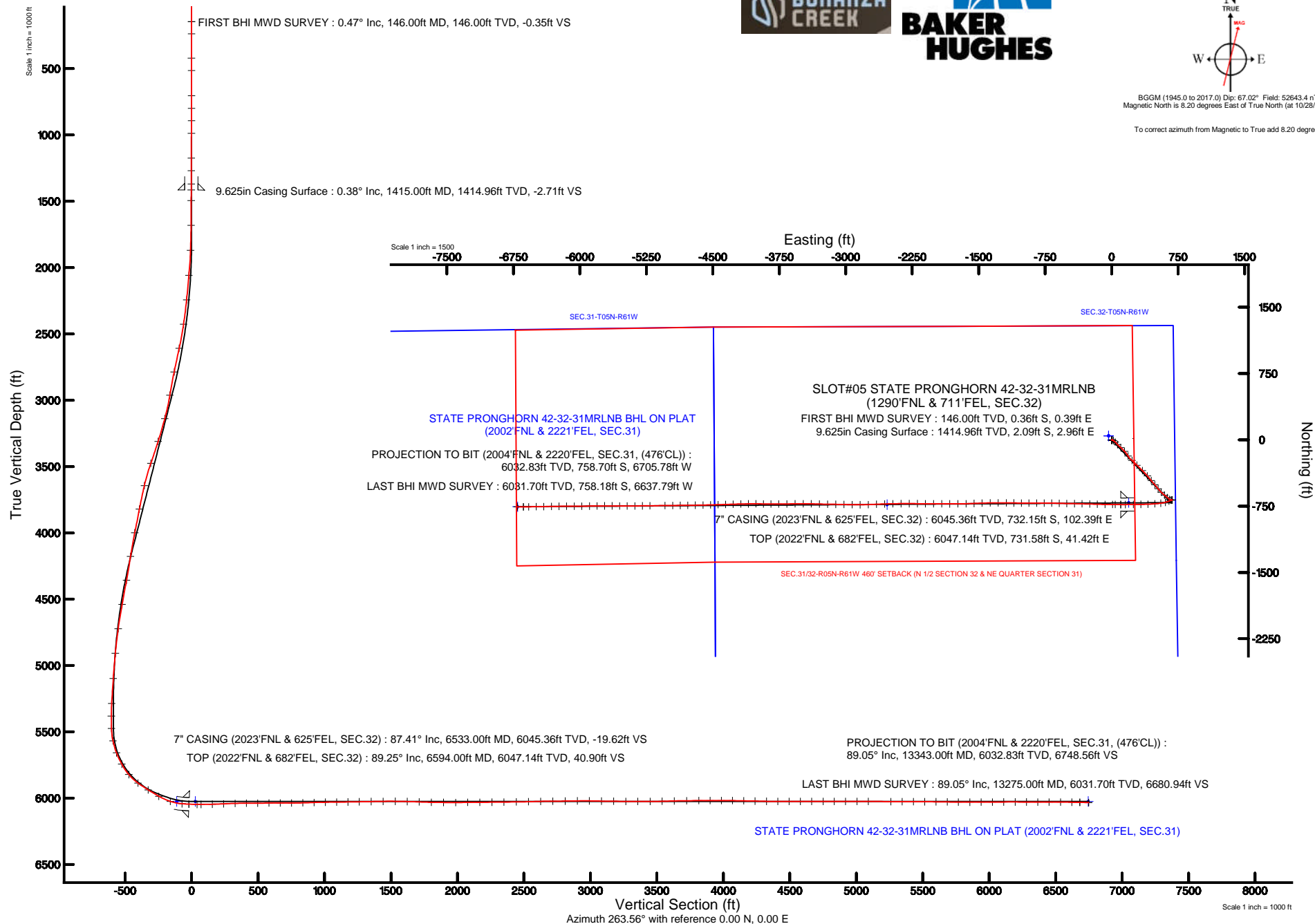


Location:	COLORADO	Slot:	SLOT#05 STATE PRONGHORN 42-32-31MRLNB (1290'FNL & 711'FEL, SEC.32)
Field:	WELD COUNTY	Well:	STATE PRONGHORN 42-32-31MRLNB
Facility:	SEC.32-T5N-R61W	Wellbore:	STATE PRONGHORN 42-32-31MRLNB PWB

True vertical depths are referenced to XTREME 22 (17KB) (RKB)	Grid System: NAD83 / Lambert Colorado SP, Northern Zone (501), US feet
Measured depths are referenced to XTREME 22 (17KB) (RKB)	North Reference: True north
XTREME 22 (17KB) (RKB) to Mean Sea Level: 4582 feet	Scale: True distance
Mean Sea Level to Mud line (At Slot: SLOT#05 STATE PRONGHORN 42-32-31MRLNB (1290FNL & 711FEL, SEC.32); 0 feet	Depths are in feet
Coordinates are in feet referenced to Slot	Created by: ingimann on 1/26/2016



To correct azimuth from Magnetic to True add 8.20 degrees





Actual Wellpath Report

STATE PRONGHORN 42-32-31MRLNB AWP

Page 1 of 6



REFERENCE WELLPATH IDENTIFICATION

Operator	BONANZA CREEK OIL COMPANY	Slot	SLOT#05 STATE PRONGHORN 42-32-31MRLNB (1290'FNL & 711'FEL, SEC.32)
Area	COLORADO	Well	STATE PRONGHORN 42-32-31MRLNB
Field	WELD COUNTY	Wellbore	STATE PRONGHORN 42-32-31MRLNB AWB
Facility	SEC.32-T5N-R61W		

REPORT SETUP INFORMATION

Projection System	NAD83 / Lambert Colorado SP, Northern Zone (501), US feet	Software System	WellArchitect® 4.1.1
North Reference	True	User	Ingmjmr
Scale	0.999959	Report Generated	1/26/2016 at 10:10:19 AM
Convergence at slot	0.82° East	Database/Source file	WA_DEN_Denver_Defn/STATE_PRONGHORN_42-32-31MRLNB_AWB.xml

WELLPATH LOCATION

	Local coordinates		Grid coordinates		Geographic coordinates	
	North[ft]	East[ft]	Easting[US ft]	Northing[US ft]	Latitude	Longitude
Slot Location	-14.57	-245.24	3354994.49	1376910.18	40°21'39.672"N	104°13'33.852"W
Facility Reference Pt			3355239.49	1376928.28	40°21'39.816"N	104°13'30.684"W
Field Reference Pt			3335925.10	1457282.25	40°34'56.460"N	104°17'26.016"W

WELLPATH DATUM

Calculation method	Minimum curvature	XTREME 22 (17'KB) (RKB) to Facility Vertical Datum	4582.00ft
Horizontal Reference Pt	Slot	XTREME 22 (17'KB) (RKB) to Mean Sea Level	4582.00ft
Vertical Reference Pt	XTREME 22 (17'KB) (RKB)	XTREME 22 (17'KB) (RKB) to Mud Line at Slot (SLOT#05 STATE PRONGHORN 42-32-31MRLNB (1290'FNL & 711'FEL, SEC.32))	4582.00ft
MD Reference Pt	XTREME 22 (17'KB) (RKB)	Section Origin	N 0.00, E 0.00 ft
Field Vertical Reference	Mean Sea Level	Section Azimuth	263.56°



Actual Wellpath Report

STATE PRONGHORN 42-32-31MRLNB AWP

Page 2 of 6



REFERENCE WELLPATH IDENTIFICATION

Operator	BONANZA CREEK OIL COMPANY	Slot	SLOT#05 STATE PRONGHORN 42-32-31MRLNB (1290'FNL & 711'FEL, SEC.32)
Area	COLORADO	Well	STATE PRONGHORN 42-32-31MRLNB
Field	WELD COUNTY	Wellbore	STATE PRONGHORN 42-32-31MRLNB AWP
Facility	SEC.32-T5N-R61W		

WELLPATH DATA (125 stations) † = interpolated/extrapolated station

MD [ft]	Inclination [°]	Azimuth [°]	TVD [ft]	Vert Sect [ft]	North [ft]	East [ft]	DLS [°/100ft]	Comments
0.00†	0.000	132.280	0.00	0.00	0.00	0.00	0.00	
17.00	0.000	132.280	17.00	0.00	0.00	0.00	0.00	
146.00	0.470	132.280	146.00	-0.35	-0.36	0.39	0.36	FIRST BHI MWD SURVEY
238.00	0.310	126.020	238.00	-0.78	-0.76	0.87	0.18	
421.00	0.470	174.030	420.99	-1.14	-1.79	1.35	0.19	
515.00	0.650	187.550	514.99	-1.01	-2.71	1.32	0.24	
704.00	0.570	187.720	703.98	-0.52	-4.70	1.05	0.04	
799.00	0.330	136.000	798.97	-0.57	-5.37	1.18	0.47	
892.00	0.320	132.530	891.97	-0.90	-5.73	1.56	0.02	
987.00	0.600	6.740	986.97	-1.19	-5.42	1.81	0.87	
1175.00	0.520	16.970	1174.96	-1.76	-3.63	2.18	0.07	
1269.00	0.440	14.790	1268.96	-2.06	-2.87	2.39	0.09	
1369.00	0.370	52.040	1368.96	-2.47	-2.30	2.74	0.27	
1494.00	0.440	23.060	1493.95	-3.05	-1.61	3.25	0.17	
1682.00	0.650	28.830	1681.95	-4.02	-0.01	4.05	0.12	
1870.00	2.520	116.780	1869.88	-8.10	-0.94	8.25	1.37	
2059.00	6.540	123.340	2058.25	-19.85	-8.73	20.96	2.14	
2246.00	9.850	136.740	2243.33	-37.62	-26.24	40.82	2.03	
2434.00	13.650	137.180	2427.36	-60.43	-54.23	66.93	2.02	
2622.00	17.210	128.730	2608.58	-93.21	-87.92	103.72	2.23	
2810.00	20.500	139.950	2786.52	-131.06	-130.54	146.63	2.60	
2998.00	20.350	147.820	2962.74	-163.49	-183.42	185.23	1.46	
3187.00	21.720	130.530	3139.31	-201.66	-234.01	229.35	3.35	
3375.00	27.040	135.420	3310.50	-251.83	-287.10	285.84	3.02	
3562.00	28.680	134.310	3475.82	-306.48	-348.72	347.79	0.92	
3749.00	23.320	140.500	3643.87	-355.10	-408.68	403.49	3.21	
3938.00	18.580	139.440	3820.32	-392.42	-460.46	446.89	2.52	
4127.00	20.140	139.880	3998.63	-427.36	-508.22	487.44	0.83	
4315.00	16.270	141.330	4177.19	-459.36	-553.54	524.76	2.07	
4503.00	16.210	135.370	4357.70	-489.64	-592.78	559.66	0.89	
4692.00	14.290	127.610	4540.05	-522.72	-625.80	596.67	1.48	
4880.00	12.100	133.390	4723.09	-552.11	-653.50	629.38	1.36	
5068.00	6.990	123.110	4908.44	-573.66	-673.30	653.30	2.85	
5258.00	4.230	105.340	5097.52	-589.08	-681.47	669.74	1.70	
5447.00	3.380	74.400	5286.12	-601.06	-681.82	681.83	1.16	
5542.00	0.940	337.620	5381.06	-603.61	-680.34	684.23	3.80	
5636.00	1.150	279.080	5475.05	-602.49	-679.48	683.01	1.10	
5730.00	12.760	248.900	5568.21	-591.50	-683.08	672.35	12.53	
5825.00	21.780	247.210	5658.83	-564.38	-693.71	646.26	9.51	
5919.00	28.670	253.550	5743.83	-525.39	-706.86	608.51	7.86	
6014.00	40.120	263.470	5822.16	-472.12	-716.84	556.03	13.38	
6108.00	54.250	264.760	5885.88	-403.34	-723.80	487.60	15.06	
6201.00	58.110	268.130	5937.64	-326.21	-728.54	410.52	5.13	
6295.00	60.080	269.840	5985.92	-245.93	-729.96	329.89	2.61	
6389.00	71.590	268.690	6024.34	-160.73	-731.09	244.28	12.30	



Actual Wellpath Report

STATE PRONGHORN 42-32-31MRLNB AWP

Page 3 of 6



REFERENCE WELLPATH IDENTIFICATION

Operator	BONANZA CREEK OIL COMPANY	Slot	SLOT#05 STATE PRONGHORN 42-32-31MRLNB (1290'FNL & 711'FEL, SEC.32)
Area	COLORADO	Well	STATE PRONGHORN 42-32-31MRLNB
Field	WELD COUNTY	Wellbore	STATE PRONGHORN 42-32-31MRLNB AWP
Facility	SEC.32-T5N-R61W		

WELLPATH DATA (125 stations) † = interpolated/extrapolated station

MD [ft]	Inclination [°]	Azimuth [°]	TVD [ft]	Vert Sect [ft]	North [ft]	East [ft]	DLS [°/100ft]	Comments
6481.00	85.840	269.860	6042.30	-71.20	-732.21	154.30	15.54	
6533.00†	87.407	270.283	6045.36	-19.62	-732.15	102.39	3.12	7" CASING (2023'FNL & 625'FEL, SEC.32)
6594.00†	89.246	270.779	6047.14	40.90	-731.58	41.42	3.12	TOP (2022'FNL & 682'FEL, SEC.32)
6625.00	90.180	271.030	6047.30	71.64	-731.09	10.42	3.12	
6710.00	91.790	270.420	6045.84	155.96	-730.02	-74.55	2.03	
6796.00	92.500	271.330	6042.62	241.20	-728.70	-160.48	1.34	
6883.00	91.600	271.770	6039.51	327.30	-726.35	-247.39	1.15	
6969.00	90.250	271.650	6038.12	412.42	-723.79	-333.34	1.58	
7054.00	90.250	270.990	6037.75	496.64	-721.83	-418.32	0.78	
7141.00	90.770	271.360	6036.97	582.87	-720.04	-505.30	0.73	
7226.00	90.590	271.320	6035.96	667.08	-718.06	-590.27	0.22	
7312.00	89.450	270.860	6035.93	752.34	-716.42	-676.25	1.43	
7397.00	91.360	270.360	6035.33	836.69	-715.51	-761.24	2.32	
7482.00	92.060	269.860	6032.80	921.09	-715.35	-846.20	1.01	
7568.00	90.710	270.030	6030.72	1006.53	-715.43	-932.17	1.58	
7653.00	90.520	270.370	6029.80	1090.96	-715.14	-1017.17	0.46	
7739.00	90.740	270.740	6028.86	1176.31	-714.30	-1103.16	0.50	
7824.00	91.140	270.790	6027.46	1260.63	-713.17	-1188.14	0.47	
7915.00	90.830	270.030	6025.90	1350.97	-712.52	-1279.12	0.90	
8006.00	91.050	268.640	6024.41	1441.49	-713.57	-1370.10	1.55	
8097.00	89.440	267.960	6024.02	1532.18	-716.27	-1461.06	1.92	
8187.00	88.310	267.870	6025.78	1621.90	-719.55	-1550.98	1.26	
8278.00	87.940	268.270	6028.76	1712.57	-722.61	-1641.88	0.60	
8370.00	89.170	269.700	6031.08	1804.12	-724.24	-1733.83	2.05	
8462.00	89.230	270.090	6032.37	1895.55	-724.41	-1825.82	0.43	
8554.00	90.280	270.430	6032.76	1986.92	-723.99	-1917.82	1.20	
8645.00	90.710	270.180	6031.97	2077.29	-723.51	-2008.81	0.55	
8737.00	90.370	270.400	6031.11	2168.65	-723.04	-2100.81	0.44	
8828.00	90.310	270.610	6030.57	2258.98	-722.24	-2191.80	0.24	
8920.00	90.890	269.840	6029.60	2350.35	-721.88	-2283.79	1.05	
9013.00	90.580	270.010	6028.41	2442.77	-722.00	-2376.79	0.38	
9105.00	91.450	268.770	6026.78	2534.28	-722.98	-2468.76	1.65	
9197.00	91.630	268.410	6024.31	2625.89	-725.24	-2560.70	0.44	
9289.00	90.250	267.340	6022.80	2717.61	-728.65	-2652.62	1.90	
9382.00	90.580	267.650	6022.13	2810.39	-732.72	-2745.53	0.49	
9474.00	91.140	269.980	6020.74	2901.99	-734.62	-2837.50	2.60	
9565.00	88.950	271.090	6020.67	2992.31	-733.77	-2928.48	2.70	
9657.00	88.830	271.680	6022.46	3083.43	-731.55	-3020.44	0.65	
9749.00	89.570	270.870	6023.74	3174.59	-729.50	-3112.41	1.19	
9842.00	89.690	270.850	6024.34	3266.83	-728.10	-3205.39	0.13	
9933.00	89.170	271.360	6025.25	3357.04	-726.35	-3296.37	0.80	
10026.00	90.830	271.410	6025.25	3449.17	-724.10	-3389.34	1.79	
10117.00	91.200	269.530	6023.63	3539.49	-723.35	-3480.32	2.11	
10209.00	91.700	269.530	6021.31	3630.96	-724.11	-3572.29	0.54	
10302.00	90.550	269.130	6019.48	3723.47	-725.20	-3665.26	1.31	



Actual Wellpath Report

STATE PRONGHORN 42-32-31MRLNB AWP

Page 4 of 6



REFERENCE WELLPATH IDENTIFICATION

Operator	BONANZA CREEK OIL COMPANY	Slot	SLOT#05 STATE PRONGHORN 42-32-31MRLNB (1290'FNL & 711'FEL, SEC.32)
Area	COLORADO	Well	STATE PRONGHORN 42-32-31MRLNB
Field	WELD COUNTY	Wellbore	STATE PRONGHORN 42-32-31MRLNB AWP
Facility	SEC.32-T5N-R61W		

WELLPATH DATA (125 stations)

MD [ft]	Inclination [°]	Azimuth [°]	TVD [ft]	Vert Sect [ft]	North [ft]	East [ft]	DLS [°/100ft]	Comments
10394.00	90.770	269.840	6018.42	3814.97	-726.02	-3757.25	0.81	
10480.00	89.690	270.130	6018.07	3900.43	-726.05	-3843.25	1.30	
10565.00	90.180	271.130	6018.17	3984.78	-725.11	-3928.24	1.31	
10650.00	89.140	270.020	6018.68	4069.14	-724.26	-4013.23	1.79	
10735.00	88.650	269.510	6020.31	4153.63	-724.61	-4098.22	0.83	
10820.00	88.800	268.580	6022.21	4238.22	-726.02	-4183.18	1.11	
10907.00	88.740	268.490	6024.07	4324.87	-728.25	-4270.13	0.12	
10992.00	89.880	268.050	6025.10	4409.58	-730.81	-4355.09	1.44	
11078.00	90.030	268.040	6025.16	4495.31	-733.75	-4441.04	0.17	
11163.00	89.940	268.700	6025.19	4580.01	-736.16	-4526.00	0.78	
11248.00	90.000	268.680	6025.23	4664.67	-738.11	-4610.98	0.07	
11334.00	90.310	269.110	6025.00	4750.30	-739.77	-4696.96	0.62	
11419.00	90.250	269.390	6024.58	4834.88	-740.88	-4781.96	0.34	
11504.00	89.850	269.250	6024.51	4919.45	-741.89	-4866.95	0.50	
11590.00	89.910	269.560	6024.69	5005.00	-742.78	-4952.94	0.37	
11676.00	89.720	269.200	6024.97	5090.56	-743.71	-5038.94	0.47	
11846.00	89.480	269.320	6026.15	5259.71	-745.91	-5208.92	0.16	
11932.00	89.940	269.420	6026.59	5345.27	-746.85	-5294.91	0.55	
12017.00	89.750	269.590	6026.82	5429.81	-747.59	-5379.91	0.30	
12103.00	89.850	269.970	6027.12	5515.31	-747.92	-5465.91	0.46	
12188.00	89.600	270.260	6027.53	5599.75	-747.75	-5550.91	0.45	
12273.00	88.860	270.280	6028.67	5684.16	-747.35	-5635.90	0.87	
12358.00	89.320	269.890	6030.02	5768.60	-747.22	-5720.89	0.71	
12444.00	90.000	268.780	6030.53	5854.16	-748.22	-5806.88	1.51	
12529.00	90.250	269.410	6030.34	5938.76	-749.56	-5891.87	0.80	
12615.00	90.400	269.510	6029.86	6024.30	-750.37	-5977.86	0.21	
12701.00	90.680	269.960	6029.05	6109.80	-750.77	-6063.86	0.62	
12787.00	89.560	269.410	6028.87	6195.31	-751.24	-6149.85	1.45	
12872.00	89.940	269.350	6029.24	6279.87	-752.16	-6234.85	0.45	
12958.00	90.000	268.820	6029.28	6365.47	-753.53	-6320.84	0.62	
13044.00	89.880	269.140	6029.37	6451.08	-755.07	-6406.82	0.40	
13130.00	89.510	269.110	6029.83	6536.68	-756.38	-6492.81	0.43	
13215.00	89.200	269.280	6030.79	6621.26	-757.57	-6577.80	0.42	
13275.00	89.050	269.560	6031.70	6680.94	-758.18	-6637.79	0.53	LAST BHI MWD SURVEY
13343.00	89.050	269.560	6032.83	6748.56	-758.70	-6705.78	0.00	PROJECTION TO BIT (2004'FNL & 2220'FEL, SEC.31, (476'CL))

HOLE & CASING SECTIONS - Ref Wellbore: STATE PRONGHORN 42-32-31MRLNB AWP Ref Wellpath: STATE PRONGHORN 42-32-31MRLNB AWP

String/Diameter	Start MD [ft]	End MD [ft]	Interval [ft]	Start TVD [ft]	End TVD [ft]	Start N/S [ft]	Start E/W [ft]	End N/S [ft]	End E/W [ft]
13.5in Open Hole	17.00	1415.00	1398.00	17.00	1414.96	0.00	0.00	-2.09	2.96
9.625in Casing Surface	17.00	1415.00	1398.00	17.00	1414.96	0.00	0.00	-2.09	2.96
8.75in Open Hole	1415.00	6549.00	5134.00	1414.96	6046.02	-2.09	2.96	-732.05	86.40
7in Casing Intermediate	17.00	6533.00	6516.00	17.00	6045.36	0.00	0.00	-732.15	102.39
6.125in Open Hole	6549.00	13343.00	6794.00	6046.02	6032.83	-732.05	86.40	-758.70	-6705.78



Actual Wellpath Report

STATE PRONGHORN 42-32-31MRLNB AWP

Page 5 of 6



REFERENCE WELLPATH IDENTIFICATION

Operator	BONANZA CREEK OIL COMPANY	Slot	SLOT#05 STATE PRONGHORN 42-32-31MRLNB (1290'FNL & 711'FEL, SEC.32)
Area	COLORADO	Well	STATE PRONGHORN 42-32-31MRLNB
Field	WELD COUNTY	Wellbore	STATE PRONGHORN 42-32-31MRLNB AWB
Facility	SEC.32-T5N-R61W		

TARGETS

Name	TVD [ft]	North [ft]	East [ft]	Grid East [US ft]	Grid North [US ft]	Latitude	Longitude	Shape
SEC.31-T05N-R61W	0.00	43.72	-33.44	3354960.43	1376953.41	40°21'40.104"N	104°13'34.284"W	polygon
SEC.32-T05N-R61W	0.00	43.72	-33.44	3354960.43	1376953.41	40°21'40.104"N	104°13'34.284"W	polygon
SEC.31/32-R05N-R61W 460' SETBACK (N 1/2 SECTION 32 & NE QUARTER SECTION 31)	6025.00	43.72	-33.44	3354960.43	1376953.41	40°21'40.104"N	104°13'34.284"W	polygon
STATE PRONGHORN 42-32-31MRLNB BHL ON PLAT (2002'FNL & 2221'FEL, SEC.31)	6025.00	-756.85	-6702.52	3348303.82	1376057.15	40°21'32.184"N	104°15'00.432"W	point
STATE PRONGHORN 42-32-31MRLNB TARGET 1 (2002'FNL & 531'FEL, SEC.32)	6025.00	-710.40	192.30	3355196.96	1376202.64	40°21'32.652"N	104°13'31.368"W	point
Ex.State -32# (200'R)	6780.00	-733.23	-2534.41	3352470.98	1376140.66	40°21'32.425"N	104°14'06.590"W	circle

WELLPATH COMPOSITION - Ref Wellbore: STATE PRONGHORN 42-32-31MRLNB AWB Ref Wellpath: STATE PRONGHORN 42-32-31MRLNB AWP

Start MD [ft]	End MD [ft]	Positional Uncertainty Model	Log Name/Comment	Wellbore
17.00	1369.00	Custom NaviTrak (Standard) (Rockies 0.03Gt model)	BHI MWD/NAVITRAK (STD) 13.5" HOLE <146-1369>	STATE PRONGHORN 42-32-31MRLNB AWB
1369.00	6481.00	Custom NaviTrak (Standard) (Rockies 0.03Gt model)	BHI MWD/NAVITRAK (STD) 8.75" HOLE <1494-6481>	STATE PRONGHORN 42-32-31MRLNB AWB
6481.00	13275.00	Custom NaviTrak (Standard) (Rockies 0.03Gt model)	BHI MWD/NAVITRAK (STD) 6.125" HOLE <6625-13275>	STATE PRONGHORN 42-32-31MRLNB AWB
13275.00	13343.00	Blind Drilling (std)	Projection to bit	STATE PRONGHORN 42-32-31MRLNB AWB



Actual Wellpath Report
STATE PRONGHORN 42-32-31MRLNB AWP
Page 6 of 6



REFERENCE WELLPATH IDENTIFICATION			
Operator	BONANZA CREEK OIL COMPANY	Slot	SLOT#05 STATE PRONGHORN 42-32-31MRLNB (1290'FNL & 711'FEL, SEC.32)
Area	COLORADO	Well	STATE PRONGHORN 42-32-31MRLNB
Field	WELD COUNTY	Wellbore	STATE PRONGHORN 42-32-31MRLNB AWB
Facility	SEC.32-T5N-R61W		

WELLPATH COMMENTS				
MD [ft]	Inclination [°]	Azimuth [°]	TVD [ft]	Comment
146.00	0.470	132.280	146.00	FIRST BHI MWD SURVEY
6533.00	87.407	270.283	6045.36	7" CASING (2023'FNL & 625'FEL, SEC.32)
6594.00	89.246	270.779	6047.14	TOP (2022'FNL & 682'FEL, SEC.32)
13275.00	89.050	269.560	6031.70	LAST BHI MWD SURVEY
13343.00	89.050	269.560	6032.83	PROJECTION TO BIT (2004'FNL & 2220'FEL, SEC.31, (476'CL))