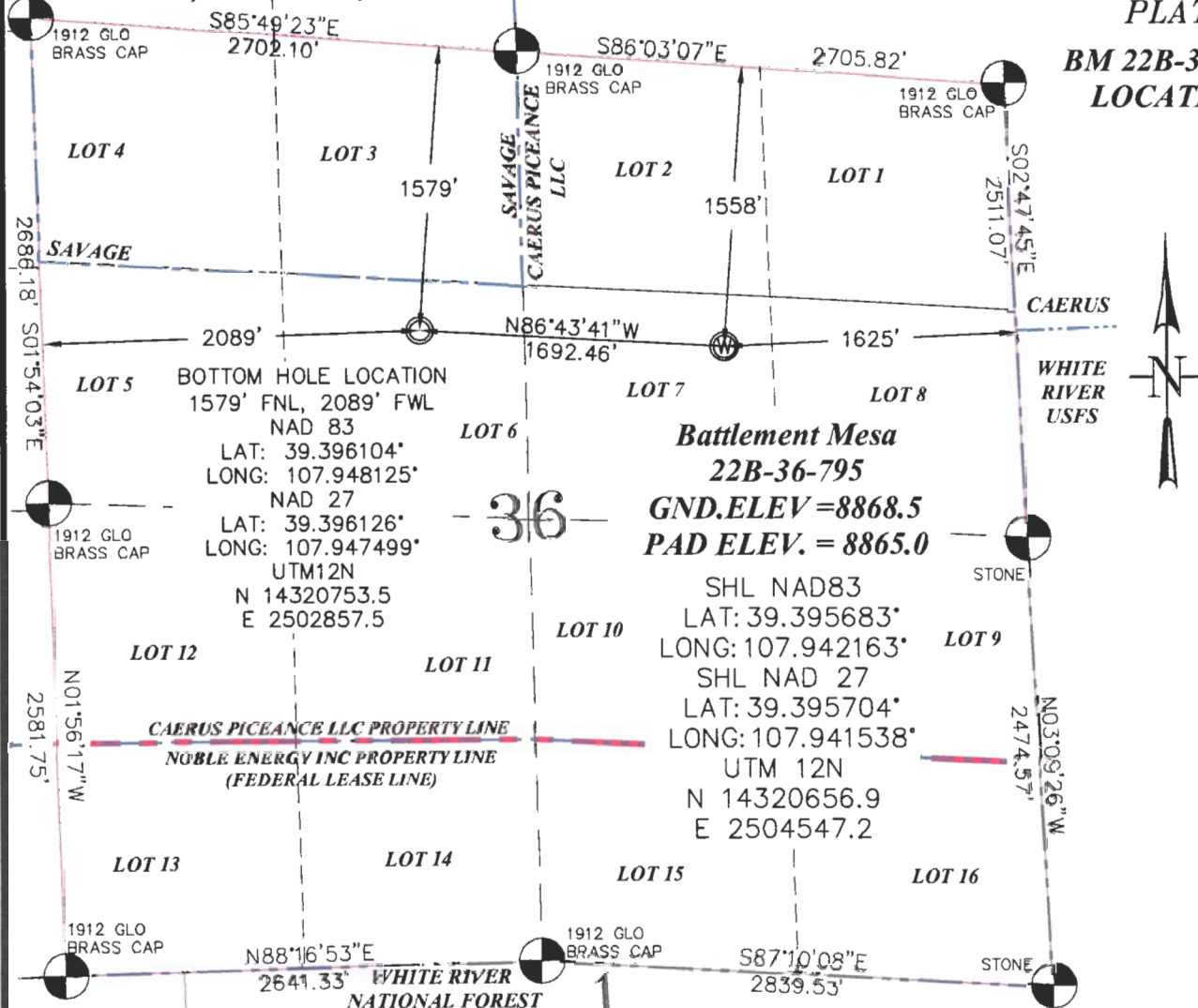


BM 22B-36-795
LOCATION



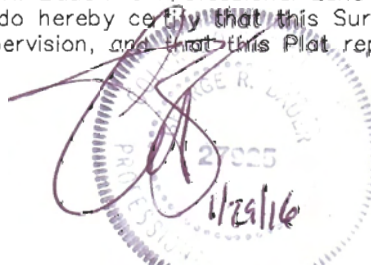
THIS WELL LOCATION PLAT WAS PREPARED FOR CAERUS PICEANCE LLC TO LOCATE THE BATTLEMENT MESA #22B-36-795 WELL, 1558 FEET FROM THE NORTH LINE OF SAID SECTION AND 1625 FEET FROM THE EAST LINE OF LOT 7 (SW1/4NE1/4) OF SECTION 36, T. 7 S., R. 95 W. OF THE 6TH P.M. GARFIELD COUNTY, COLORADO.

REFERENCE NOTES

- 1) T. 7 S., R. 95 W., 6TH P.M. GLO PLAT.
- 2) U.S.G.S. QUAD: PARACHUTE, CO
- 3) ELEVATIONS BASED ON N.A.V.D. 1988 LIDAR
BASED CONTROL PT CP MON 8
- 4) LATITUDES AND LONGITUDES ARE BASED ON
NAD 83, COLORADO CENTRAL ZONE.
- 5) GPS OPERATOR ROBERT WOOD, OBSERVED
A PDOP OF 1.9.
- 6) ALL GPS OBSERVATIONS ARE IN COMPLIANCE
WITH COGCC RULE NO. 215.
- 7) SURFACE AND BOTTOM HOLE LOCATIONS
ARE MEASURED 90° FROM SECTION LINES.

SURVEYOR'S CERTIFICATE

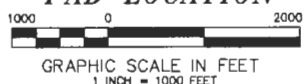
I, George R. Bauer: a Professional Land Surveyor in the State of Colorado do hereby certify that this Survey was made under my direct supervision, and that this Plat represents said Survey.



—LEGEND—

- FIELD SURVEYED SECTION
CORNER LOCATIONS
- FIELD SURVEYED WELL
LOCATION
- CALCULATED BOTTOM
HOLE LOCATION

BM 36G-795
PAD LOCATION



Caerus Piceance LLC

WELL LOCATION PLAT

CONSTRUCTION SURVEYS, INC.
0012 SUNRISE BLYD. BILT, CO
81652 (970)876-5753

SURVEY BY:REW 12/10/15

PDOP: 1.9

DRAWN BY: REW 01/28/16

DWG: CAERUS\8M36G-795PLAT 1

REVISÉD: