

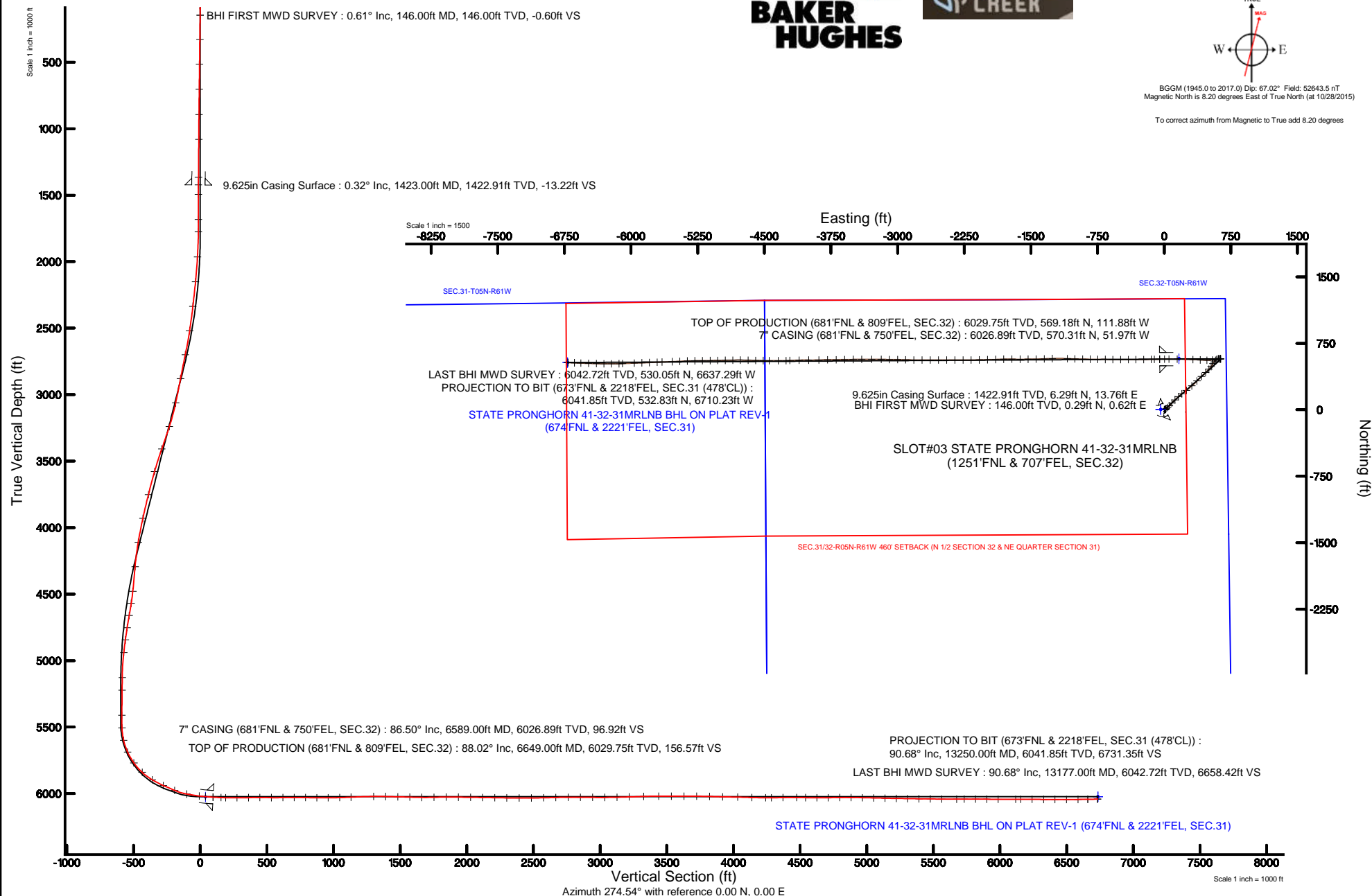
Location:	COLORADO	Slot:	SLOT#03 STATE PRONGHORN 41-32-31MRLNB (1251'FNL & 707'FEL, SEC.32)
Field:	WELD COUNTY	Well:	STATE PRONGHORN 41-32-31MRLNB
Facility:	SEC.32-T5N-R61W	Wellbore:	STATE PRONGHORN 41-32-31MRLNB PWB

True vertical depths are referenced to XTREME 22 (17KB) (RKB)	Grid System: NAD83 / Lambert Colorado SP, Northern Zone (501), US feet
Measured depths are referenced to XTREME 22 (17KB) (RKB)	North Reference: True north
XTREME 22 (17KB) (RKB) to Mean Sea Level: 4582 feet	Scale: True distance
Mean Sea Level to Mud line (At Slot: SLOTR03 STATE PRONGHORN 41-32-31MRLNB (1251FNL & 707FEL, SEC.32)) 0 feet	Depths are in feet
Coordinates are in feet referenced to Slot	Created by: ingimjiam on 1/26/2016



BGGM (1945.0 to 2017.0) Dip: 67.02° Field: 52643.5 nT
Magnetic North is 8.20 degrees East of True North (at 10/28/2015)

To correct azimuth from Magnetic to True add 8.20 degrees





Actual Wellpath Report

STATE PRONGHORN 41-32-31MRLNB AWP

Page 1 of 6



REFERENCE WELLPATH IDENTIFICATION

Operator	BONANZA CREEK OIL COMPANY	Slot	SLOT#03 STATE PRONGHORN 41-32-31MRLNB (1251'FNL & 707'FEL, SEC.32)
Area	COLORADO	Well	STATE PRONGHORN 41-32-31MRLNB
Field	WELD COUNTY	Wellbore	STATE PRONGHORN 41-32-31MRLNB AWB
Facility	SEC.32-T5N-R61W		

REPORT SETUP INFORMATION

Projection System	NAD83 / Lambert Colorado SP, Northern Zone (501), US feet	Software System	WellArchitect® 4.1.1
North Reference	True	User	Ingmjmr
Scale	0.999959	Report Generated	1/26/2016 at 9:19:24 AM
Convergence at slot	0.82° East	Database/Source file	WA_DEN_Denver_Defn/STATE_PRONGHORN_41-32-31MRLNB_AWB.xml

WELLPATH LOCATION

	Local coordinates		Grid coordinates		Geographic coordinates	
	North[ft]	East[ft]	Easting[US ft]	Northing[US ft]	Latitude	Longitude
Slot Location	25.50	-239.67	3354999.49	1376950.33	40°21'40.068"N	104°13'33.780"W
Facility Reference Pt			3355239.49	1376928.28	40°21'39.816"N	104°13'30.684"W
Field Reference Pt			3335925.10	1457282.25	40°34'56.460"N	104°17'26.016"W

WELLPATH DATUM

Calculation method	Minimum curvature	XTREME 22 (17'KB) (RKB) to Facility Vertical Datum	4582.00ft
Horizontal Reference Pt	Slot	XTREME 22 (17'KB) (RKB) to Mean Sea Level	4582.00ft
Vertical Reference Pt	XTREME 22 (17'KB) (RKB)	XTREME 22 (17'KB) (RKB) to Mud Line at Slot (SLOT#03 STATE PRONGHORN 41-32-31MRLNB (1251'FNL & 707'FEL, SEC.32))	4582.00ft
MD Reference Pt	XTREME 22 (17'KB) (RKB)	Section Origin	N 0.00, E 0.00 ft
Field Vertical Reference	Mean Sea Level	Section Azimuth	274.54°



Actual Wellpath Report

STATE PRONGHORN 41-32-31MRLNB AWP

Page 2 of 6



REFERENCE WELLPATH IDENTIFICATION

Operator	BONANZA CREEK OIL COMPANY	Slot	SLOT#03 STATE PRONGHORN 41-32-31MRLNB (1251'FNL & 707'FEL, SEC.32)
Area	COLORADO	Well	STATE PRONGHORN 41-32-31MRLNB
Field	WELD COUNTY	Wellbore	STATE PRONGHORN 41-32-31MRLNB AWP
Facility	SEC.32-T5N-R61W		

WELLPATH DATA (122 stations) † = interpolated/extrapolated station

MD [ft]	Inclination [°]	Azimuth [°]	TVD [ft]	Vert Sect [ft]	North [ft]	East [ft]	DLS [°/100ft]	Comments
0.00†	0.000	65.110	0.00	0.00	0.00	0.00	0.00	
17.00	0.000	65.110	17.00	0.00	0.00	0.00	0.00	
146.00	0.610	65.110	146.00	-0.60	0.29	0.62	0.47	BHI FIRST MWD SURVEY
328.00	0.760	73.530	327.98	-2.57	1.04	2.66	0.10	
515.00	0.800	72.700	514.97	-4.94	1.78	5.09	0.02	
704.00	0.750	70.750	703.95	-7.29	2.58	7.52	0.03	
893.00	0.510	77.410	892.94	-9.23	3.17	9.51	0.13	
1081.00	0.720	42.530	1080.93	-10.76	4.22	11.13	0.22	
1366.00	0.490	60.240	1365.91	-12.87	6.15	13.39	0.10	
1494.00	0.280	141.900	1493.91	-13.53	6.17	14.06	0.41	
1682.00	0.410	273.080	1681.91	-13.17	5.85	13.67	0.34	
1776.00	1.670	39.500	1775.90	-13.62	6.92	14.21	2.07	
1964.00	4.570	52.980	1963.60	-20.79	13.55	21.93	1.58	
2152.00	7.340	52.570	2150.57	-35.33	25.36	37.45	1.47	
2339.00	10.570	42.900	2335.27	-54.86	45.19	58.62	1.90	
2527.00	14.430	40.750	2518.78	-79.41	75.58	85.66	2.07	
2715.00	17.120	46.980	2699.70	-111.93	112.21	121.19	1.69	
2903.00	15.420	47.910	2880.16	-147.77	147.85	159.97	0.91	
3092.00	15.740	52.490	3062.23	-184.07	180.30	198.96	0.67	
3281.00	23.960	52.210	3239.84	-231.56	219.49	249.70	4.35	
3468.00	26.480	48.980	3409.01	-288.83	270.13	311.18	1.54	
3655.00	24.200	43.690	3578.03	-342.24	325.22	369.12	1.72	
3843.00	20.920	45.100	3751.62	-388.40	376.79	419.53	1.77	
4032.00	18.010	46.830	3929.80	-430.02	420.61	464.75	1.57	
4221.00	14.890	44.310	4111.05	-465.22	457.98	503.03	1.69	
4408.00	9.580	35.060	4293.75	-488.51	487.94	528.77	3.02	
4597.00	14.460	27.450	4478.56	-505.70	521.77	548.70	2.71	
4691.00	15.550	39.910	4569.38	-517.56	541.86	562.20	3.61	
4785.00	14.230	47.540	4660.23	-532.74	559.33	578.81	2.51	
4879.00	11.310	57.580	4751.91	-547.99	572.07	595.12	3.89	
4973.00	7.760	88.740	4844.65	-561.68	577.16	609.26	6.53	
5068.00	6.260	92.920	4938.94	-573.24	577.04	620.84	1.67	
5257.00	0.880	120.890	5127.51	-584.85	575.76	632.39	2.91	
5352.00	0.560	116.860	5222.50	-585.93	575.18	633.43	0.34	
5541.00	0.950	111.630	5411.49	-588.29	574.19	635.71	0.21	
5636.00	2.880	249.150	5506.45	-586.88	573.04	634.21	3.83	
5730.00	13.060	263.520	5599.43	-574.29	571.00	621.41	10.95	
5824.00	24.930	262.960	5688.15	-544.35	567.36	591.09	12.63	
5919.00	35.670	263.520	5770.05	-497.41	561.76	543.56	11.31	
6013.00	47.750	271.120	5840.14	-435.51	559.34	481.27	13.91	
6107.00	59.280	273.800	5895.95	-360.12	562.71	405.91	12.48	
6201.00	66.200	272.050	5938.98	-276.65	566.93	322.51	7.55	
6294.00	67.050	272.070	5975.87	-191.36	570.00	237.20	0.91	
6389.00	79.040	269.710	6003.53	-100.85	571.35	146.51	12.84	
6484.00	83.530	269.870	6017.92	-7.30	571.01	52.64	4.73	



Actual Wellpath Report

STATE PRONGHORN 41-32-31MRLNB AWP

Page 3 of 6



REFERENCE WELLPATH IDENTIFICATION

Operator	BONANZA CREEK OIL COMPANY	Slot	SLOT#03 STATE PRONGHORN 41-32-31MRLNB (1251'FNL & 707'FEL, SEC.32)
Area	COLORADO	Well	STATE PRONGHORN 41-32-31MRLNB
Field	WELD COUNTY	Wellbore	STATE PRONGHORN 41-32-31MRLNB AWP
Facility	SEC.32-T5N-R61W		

WELLPATH DATA (122 stations) † = interpolated/extrapolated station

MD [ft]	Inclination [°]	Azimuth [°]	TVD [ft]	Vert Sect [ft]	North [ft]	East [ft]	DLS [°/100ft]	Comments
6532.00	85.060	269.730	6022.69	40.30	570.84	4.88	3.20	
6589.00†	86.502	269.200	6026.89	96.92	570.31	-51.97	2.69	7" CASING (681'FNL & 750'FEL, SEC.32)
6649.00†	88.020	268.644	6029.75	156.57	569.18	-111.88	2.69	TOP OF PRODUCTION (681'FNL & 809'FEL, SEC.32)
6683.00	88.880	268.330	6030.67	190.36	568.28	-145.86	2.69	
6769.00	90.120	269.690	6031.42	275.96	566.80	-231.84	2.14	
6856.00	91.110	270.770	6030.49	362.70	567.15	-318.83	1.68	
6941.00	89.720	269.450	6029.87	447.44	567.31	-403.83	2.26	
7027.00	89.410	269.590	6030.53	533.11	566.59	-489.82	0.40	
7114.00	91.080	270.720	6030.16	619.85	566.83	-576.81	2.32	
7199.00	90.190	270.680	6029.21	704.65	567.86	-661.80	1.05	
7285.00	88.800	270.850	6029.97	790.46	569.01	-747.79	1.63	
7370.00	89.470	270.590	6031.25	875.26	570.08	-832.77	0.85	
7455.00	90.220	271.080	6031.48	960.09	571.32	-917.76	1.05	
7541.00	91.540	272.230	6030.16	1045.96	573.80	-1003.71	2.04	
7626.00	92.680	271.770	6027.03	1130.82	576.77	-1088.60	1.45	
7797.00	91.020	268.650	6021.51	1301.22	577.39	-1259.48	2.07	
7888.00	88.120	267.940	6022.20	1391.66	574.68	-1350.43	3.28	
7979.00	88.890	268.800	6024.57	1482.11	572.10	-1441.36	1.27	
8070.00	88.340	269.270	6026.77	1572.66	570.56	-1532.32	0.79	
8160.00	89.140	269.940	6028.75	1662.30	569.94	-1622.30	1.16	
8251.00	91.910	271.170	6027.91	1753.07	570.82	-1713.28	3.33	
8343.00	89.690	268.150	6026.63	1844.71	570.28	-1805.25	4.07	
8435.00	89.910	268.450	6026.95	1936.16	567.55	-1897.21	0.40	
8527.00	88.950	268.340	6027.87	2027.63	564.97	-1989.17	1.05	
8618.00	89.230	269.200	6029.31	2118.16	563.02	-2080.13	0.99	
8710.00	88.740	269.440	6030.94	2209.76	561.93	-2172.11	0.59	
8801.00	89.630	269.470	6032.24	2300.39	561.06	-2263.10	0.98	
8893.00	89.410	270.180	6033.01	2392.08	560.78	-2355.09	0.81	
8986.00	90.550	270.170	6033.04	2484.81	561.07	-2448.09	1.23	
9078.00	91.350	269.880	6031.51	2576.51	561.11	-2540.08	0.92	
9170.00	91.600	270.490	6029.15	2668.21	561.40	-2632.05	0.72	
9262.00	89.850	269.450	6027.98	2759.91	561.35	-2724.04	2.21	
9355.00	90.280	271.170	6027.88	2852.65	561.86	-2817.03	1.91	
9447.00	89.050	271.280	6028.41	2944.49	563.82	-2909.01	1.34	
9538.00	90.340	270.950	6028.90	3035.33	565.59	-2999.99	1.46	
9630.00	91.290	271.040	6027.59	3127.14	567.19	-3091.96	1.04	
9722.00	91.760	270.740	6025.14	3218.92	568.62	-3183.92	0.61	
9830.00	92.160	269.780	6021.45	3326.56	569.11	-3291.85	0.96	
9943.00	90.250	270.020	6019.07	3439.16	568.91	-3404.82	1.70	
10038.00	89.510	268.610	6019.27	3533.76	567.78	-3499.81	1.68	
10134.00	89.850	269.160	6019.81	3629.29	565.91	-3595.79	0.67	
10229.00	89.880	269.520	6020.03	3723.90	564.82	-3690.78	0.38	
10327.00	88.290	269.230	6021.60	3821.49	563.75	-3788.76	1.65	
10425.00	88.670	268.100	6024.19	3918.94	561.46	-3886.70	1.22	
10538.00	88.890	270.830	6026.60	4031.46	560.41	-3999.66	2.42	



Actual Wellpath Report

STATE PRONGHORN 41-32-31MRLNB AWP

Page 4 of 6



REFERENCE WELLPATH IDENTIFICATION

Operator	BONANZA CREEK OIL COMPANY	Slot	SLOT#03 STATE PRONGHORN 41-32-31MRLNB (1251'FNL & 707'FEL, SEC.32)
Area	COLORADO	Well	STATE PRONGHORN 41-32-31MRLNB
Field	WELD COUNTY	Wellbore	STATE PRONGHORN 41-32-31MRLNB AWP
Facility	SEC.32-T5N-R61W		

WELLPATH DATA (122 stations)

MD [ft]	Inclination [°]	Azimuth [°]	TVD [ft]	Vert Sect [ft]	North [ft]	East [ft]	DLS [°/100ft]	Comments
10646.00	88.340	268.180	6029.21	4139.00	559.48	-4107.61	2.51	
10750.00	89.290	267.840	6031.36	4242.30	555.87	-4211.53	0.97	
10793.00	90.680	268.910	6031.37	4285.05	554.65	-4254.51	4.08	
10880.00	91.540	269.590	6029.69	4371.66	553.51	-4341.48	1.26	
10983.00	89.110	270.840	6029.10	4474.36	553.89	-4444.47	2.65	
11050.00	88.710	270.950	6030.38	4541.21	554.94	-4511.45	0.62	
11136.00	90.150	271.320	6031.23	4627.05	556.64	-4597.43	1.73	
11221.00	90.590	271.720	6030.69	4711.93	558.90	-4682.39	0.70	
11307.00	90.310	270.240	6030.01	4797.76	560.37	-4768.38	1.75	
11392.00	89.850	268.900	6029.89	4882.44	559.73	-4853.37	1.67	
11477.00	89.050	268.760	6030.71	4967.02	558.00	-4938.35	0.96	
11563.00	88.740	268.970	6032.37	5052.58	556.29	-5024.32	0.44	
11648.00	88.520	269.480	6034.40	5137.19	555.14	-5109.28	0.65	
11734.00	89.110	269.400	6036.18	5222.83	554.30	-5195.26	0.69	
11819.00	88.800	268.780	6037.73	5307.43	552.95	-5280.24	0.82	
11904.00	89.730	267.600	6038.82	5391.90	550.27	-5365.18	1.77	
11990.00	88.950	267.410	6039.81	5477.25	546.53	-5451.10	0.93	
12076.00	89.140	267.670	6041.24	5562.60	542.84	-5537.00	0.37	
12189.00	90.090	267.540	6042.00	5674.76	538.11	-5649.90	0.85	
12246.00	90.400	267.750	6041.76	5731.35	535.77	-5706.85	0.66	
12331.00	89.750	268.120	6041.65	5815.79	532.71	-5791.80	0.88	
12417.00	89.720	268.110	6042.04	5901.25	529.88	-5877.75	0.04	
12502.00	89.070	267.620	6042.94	5985.67	526.71	-5962.69	0.96	
12635.00	90.520	267.750	6043.42	6117.71	521.34	-6095.57	1.09	
12674.00	90.400	267.880	6043.10	6156.44	519.85	-6134.54	0.45	
12759.00	89.450	269.870	6043.21	6241.02	518.19	-6219.52	2.59	
12845.00	89.750	270.680	6043.82	6326.78	518.60	-6305.52	1.00	
12930.00	90.000	271.990	6044.00	6411.65	520.58	-6390.49	1.57	
13017.00	89.450	271.910	6044.42	6498.56	523.54	-6477.44	0.64	
13103.00	91.200	272.630	6043.93	6584.48	526.94	-6563.37	2.20	
13177.00	90.680	272.180	6042.72	6658.42	530.05	-6637.29	0.93	LAST BHI MWD SURVEY
13250.00	90.680	272.180	6041.85	6731.35	532.83	-6710.23	0.00	PROJECTION TO BIT (673'FNL & 2218'FEL, SEC.31 (478'CL))

HOLE & CASING SECTIONS - Ref Wellbore: STATE PRONGHORN 41-32-31MRLNB AWP Ref Wellpath: STATE PRONGHORN 41-32-31MRLNB AWP

String/Diameter	Start MD [ft]	End MD [ft]	Interval [ft]	Start TVD [ft]	End TVD [ft]	Start N/S [ft]	Start E/W [ft]	End N/S [ft]	End E/W [ft]
13.5in Open Hole	17.00	1423.00	1406.00	17.00	1422.91	0.00	0.00	6.29	13.76
9.625in Casing Surface	17.00	1423.00	1406.00	17.00	1422.91	0.00	0.00	6.29	13.76
8.75in Open Hole	1423.00	6599.00	5176.00	1422.91	6027.47	6.29	13.76	570.16	-61.95
7in Casing Intermediate	17.00	6589.00	6572.00	17.00	6026.89	0.00	0.00	570.31	-51.97
6.125in Open Hole	6599.00	13250.00	6651.00	6027.47	6041.85	570.16	-61.95	532.83	-6710.23



Actual Wellpath Report

STATE PRONGHORN 41-32-31MRLNB AWP

Page 5 of 6



REFERENCE WELLPATH IDENTIFICATION

Operator	BONANZA CREEK OIL COMPANY	Slot	SLOT#03 STATE PRONGHORN 41-32-31MRLNB (1251'FNL & 707'FEL, SEC.32)
Area	COLORADO	Well	STATE PRONGHORN 41-32-31MRLNB
Field	WELD COUNTY	Wellbore	STATE PRONGHORN 41-32-31MRLNB AWP
Facility	SEC.32-T5N-R61W		

TARGETS

Name	TVD [ft]	North [ft]	East [ft]	Grid East [US ft]	Grid North [US ft]	Latitude	Longitude	Shape
SEC.31-T05N-R61W	0.00	3.64	-39.02	3354960.43	1376953.41	40°21'40.104"N	104°13'34.284"W	polygon
SEC.32-T05N-R61W	0.00	3.64	-39.02	3354960.43	1376953.41	40°21'40.104"N	104°13'34.284"W	polygon
STATE PRONGHORN 41-32-31MRLNB BHL ON PLAT REV-1 (674'FNL & 2221'FEL, SEC.31)	6023.00	532.80	-6713.31	3348279.51	1377386.62	40°21'45.324"N	104°15'00.504"W	point
STATE PRONGHORN 41-32-31MRLNB TARGET 1 REV-1 (674'FNL & 531'FEL, SEC.32)	6023.00	575.61	167.21	3355158.40	1377528.26	40°21'45.756"N	104°13'31.620"W	point
SEC.31/32-R05N-R61W 460' SETBACK (N 1/2 SECTION 32 & NE QUARTER SECTION 31)	6025.00	3.64	-39.02	3354960.43	1376953.41	40°21'40.104"N	104°13'34.284"W	polygon
STATE PRONGHORN 41-32-31MRLNB BHL ON PLAT (674'FNL & 2221'FEL, SEC.31)	6025.00	532.80	-6713.31	3348279.51	1377386.62	40°21'45.324"N	104°15'00.504"W	point
STATE PRONGHORN 41-32-31MRLNB TARGET 1 (674'FNL & 531'FEL, SEC.32)	6025.00	575.61	167.21	3355158.40	1377528.26	40°21'45.756"N	104°13'31.620"W	point
Ex.State -32# (200'R)	6780.00	-773.30	-2539.99	3352470.98	1376140.66	40°21'32.425"N	104°14'06.590"W	circle

WELLPATH COMPOSITION - Ref Wellbore: STATE PRONGHORN 41-32-31MRLNB AWP Ref Wellpath: STATE PRONGHORN 41-32-31MRLNB AWP

Start MD [ft]	End MD [ft]	Positional Uncertainty Model	Log Name/Comment	Wellbore
17.00	1366.00	Custom NaviTrak (Standard) (Rockies 0.03Gt model)	BHI MWD/NAVITRAK (STD) 13.5" HOLE <146-1366>	STATE PRONGHORN 41-32-31MRLNB AWP
1366.00	6532.00	Custom NaviTrak (Standard) (Rockies 0.03Gt model)	BHI MWD/NAVITRAK (STD) 8.75" HOLE <1494-6532>	STATE PRONGHORN 41-32-31MRLNB AWP
6532.00	13177.00	Custom NaviTrak (Standard) (Rockies 0.03Gt model)	BHI MWD/NAVITRAK (STD) 6.125" HOLE <6683-13177>	STATE PRONGHORN 41-32-31MRLNB AWP
13177.00	13250.00	Blind Drilling (std)	Projection to bit	STATE PRONGHORN 41-32-31MRLNB AWP



Actual Wellpath Report

STATE PRONGHORN 41-32-31MRLNB AWP

Page 6 of 6



REFERENCE WELLPATH IDENTIFICATION

Operator	BONANZA CREEK OIL COMPANY	Slot	SLOT#03 STATE PRONGHORN 41-32-31MRLNB (1251'FNL & 707'FEL, SEC.32)
Area	COLORADO	Well	STATE PRONGHORN 41-32-31MRLNB
Field	WELD COUNTY	Wellbore	STATE PRONGHORN 41-32-31MRLNB AWP
Facility	SEC.32-T5N-R61W		

WELLPATH COMMENTS

MD [ft]	Inclination [°]	Azimuth [°]	TVD [ft]	Comment
146.00	0.610	65.110	146.00	BHI FIRST MWD SURVEY
6589.00	86.502	269.200	6026.89	7" CASING (681'FNL & 750'FEL, SEC.32)
6649.00	88.020	268.644	6029.75	TOP OF PRODUCTION (681'FNL & 809'FEL, SEC.32)
13177.00	90.680	272.180	6042.72	LAST BHI MWD SURVEY
13250.00	90.680	272.180	6041.85	PROJECTION TO BIT (673'FNL & 2218'FEL, SEC.31 (478'CL))