

Location:	COLORADO	Slot:	SLOT#02 NORTH PLATTE Y44-U41-13HNB (619'FSL & 403'FEL, SEC.13)
Field:	WELD COUNTY	Well:	NORTH PLATTE Y44-U41-13HNB
Facility:	SEC.13-T05N-R63W	Wellbore:	NORTH PLATTE Y44-U41-13HNB PWB

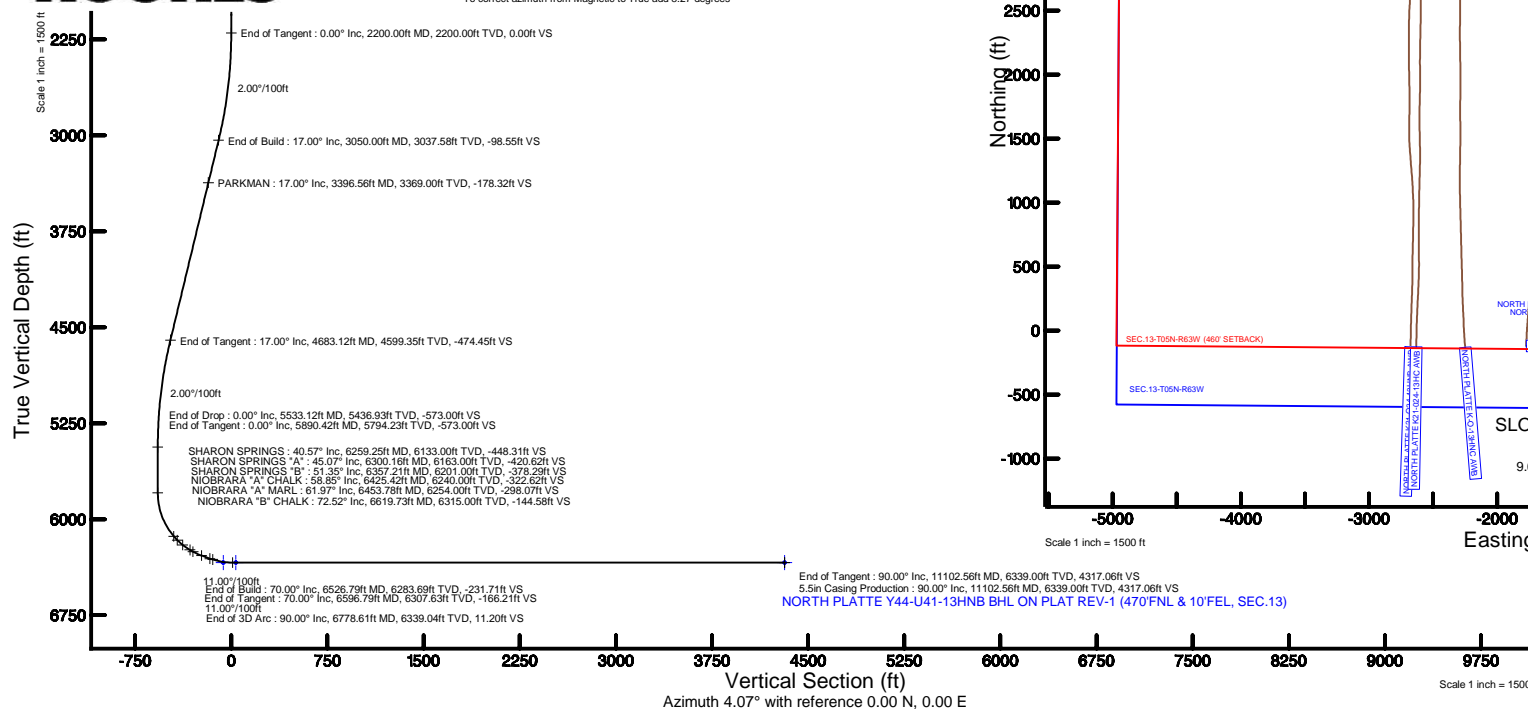
True vertical depths are referenced to XTREME 22 (17KB) (RKB)	Grid System: NAD83 / Lambert Colorado SP, Northern Zone (501), US feet
Measured depths are referenced to XTREME 22 (17KB) (RKB)	North Reference: True north
XTREME 22 (17KB) (RKB) to Mean Sea Level: 4614 feet	Scale: True distance
Mean Sea Level to Mud line (At Slot: SLO702 NORTH PLATTE Y44-U41-13)NB (619'FSL & 403'FEL SEC.13): 0 feet	Depths are in feet
Coordinates are in feet referenced to Slot	Created by: ingmjmr on 1/28/2016

Facility Name				Grid East (US ft)	Grid North (US ft)	Latitude	Longitude
SEC.13-T09N-R63W				3312874.958	1388185.127	40°22'35.708"N	104°22'35.084"W
Slot	Local N (ft)	Local E (ft)	Grid East (US ft)	Grid North (US ft)	Latitude	Longitude	
SLOT#02 NORTH PLATTE Y44-U41-13N#B (619FSL & 403FEL, SEC.13)	3.64	39.00	3312913.904	1388189.264	40°22'35.744"N	104°22'35.589"W	
XTREME 22 (17K#) (R#K) to Mud line (At Slot: SLOT#02 NORTH PLATTE Y44-U41-13N#B (619FSL & 403FEL, SEC.13))						4614ft	
Mean Sea Level to Mud line (At Slot: SLOT#02 NORTH PLATTE Y44-U41-13N#B (619FSL & 403FEL, SEC.13))						0ft	
XTREME 22 (17K#) (R#K) to Mean Sea Level						4614ft	



BGM (1945.0 to 2017.0) Dip: 67.01° Field: 52609.5 nT  
Magnetic North is 8.27 degrees East of True North (at 1/28/2016)

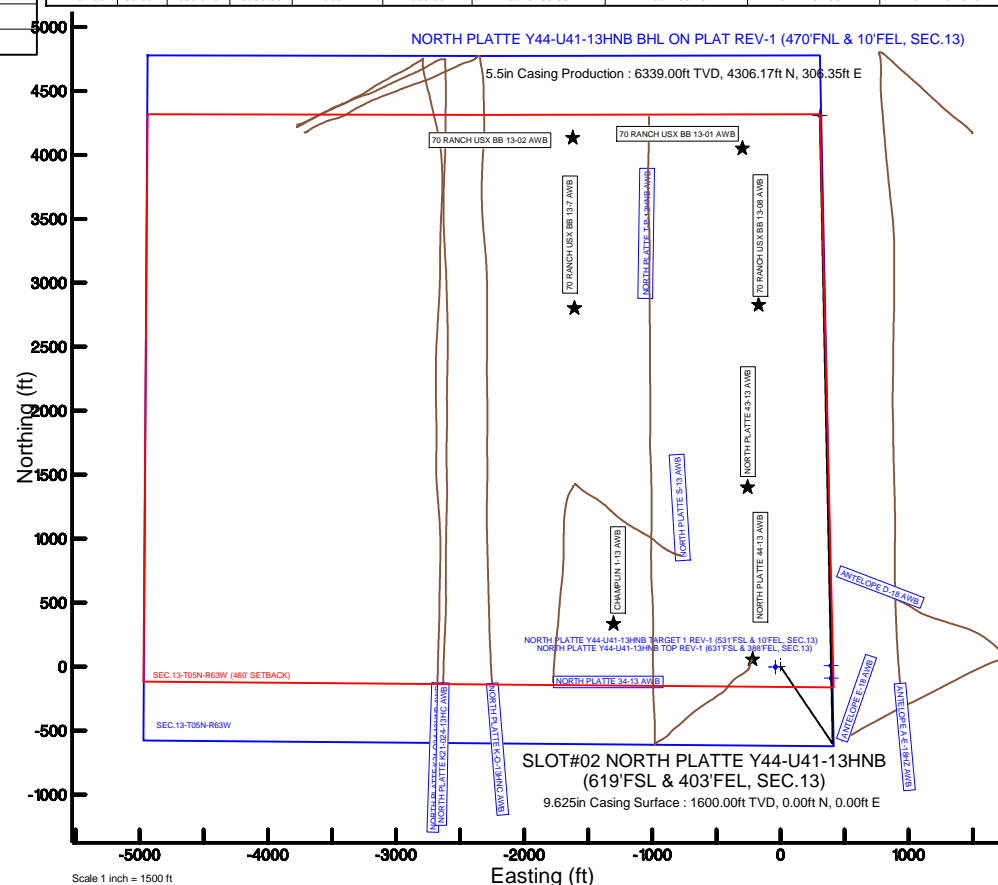
To correct azimuth from Magnetic to True add 8.27 degrees



Design Comment	MD (ft)	Inc (°)	Az (°)	TVD (ft)	Local N (ft)	Local E (ft)	DLS (°/100ft)	VS (ft)
Tie On	17.00	0.000	146.000	17.00	0.00	0.00	0.00	0.00
End of Tangent	2200.00	0.000	146.000	2200.00	0.00	0.00	0.00	0.00
End of Build	3050.00	17.000	146.000	3037.58	-103.78	70.00	2.00	-98.55
End of Tangent	4683.12	17.000	146.000	4599.35	-499.63	337.00	0.00	-474.45
End of Drop	5533.12	0.000	358.826	5436.93	-603.40	407.00	2.00	-573.00
End of Tangent	5890.42	0.000	358.826	5794.23	-603.40	407.00	0.00	-573.00
End of Build	6526.79	70.000	358.826	6283.69	-260.75	399.98	11.00	-231.71
End of Tangent	6596.79	70.000	358.826	6307.63	-194.99	398.63	0.00	-166.21
End of 3D Arc	6778.61	90.001	358.826	6339.04	-16.87	394.98	11.00	11.20
End of Tangent	11102.56	90.001	358.826	6339.00	4306.17	306.35	0.00	4317.06

Start MD (ft)	End MD (ft)	Tool	Model	Log Name/Comment	Wellbore
17.00	11102.56	NaviTrak	Custom NaviTrak (MagCorr) (Rockies 0.03Gt model)		NORTH PLATTE Y44-U41-13HNB PWB

MD (ft)	Inc (°)	Az (°)	TVD (ft)	Local N (ft)	Local E (ft)	Grid East (US ft)	Grid North (US ft)	Latitude	Longitude
11102.56	90.001	358.826	6339.00	4306.17	306.35	3313165.66	1392498.79	40°24'19.296"N	104°22'31.620"W

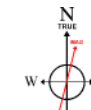


NORTH PLATTE Y44-U41-13HNB BHL ON PLAT REV-1 (470'FNL & 10'FEL, SEC.13)

Scale 1 inch = 1500 ft

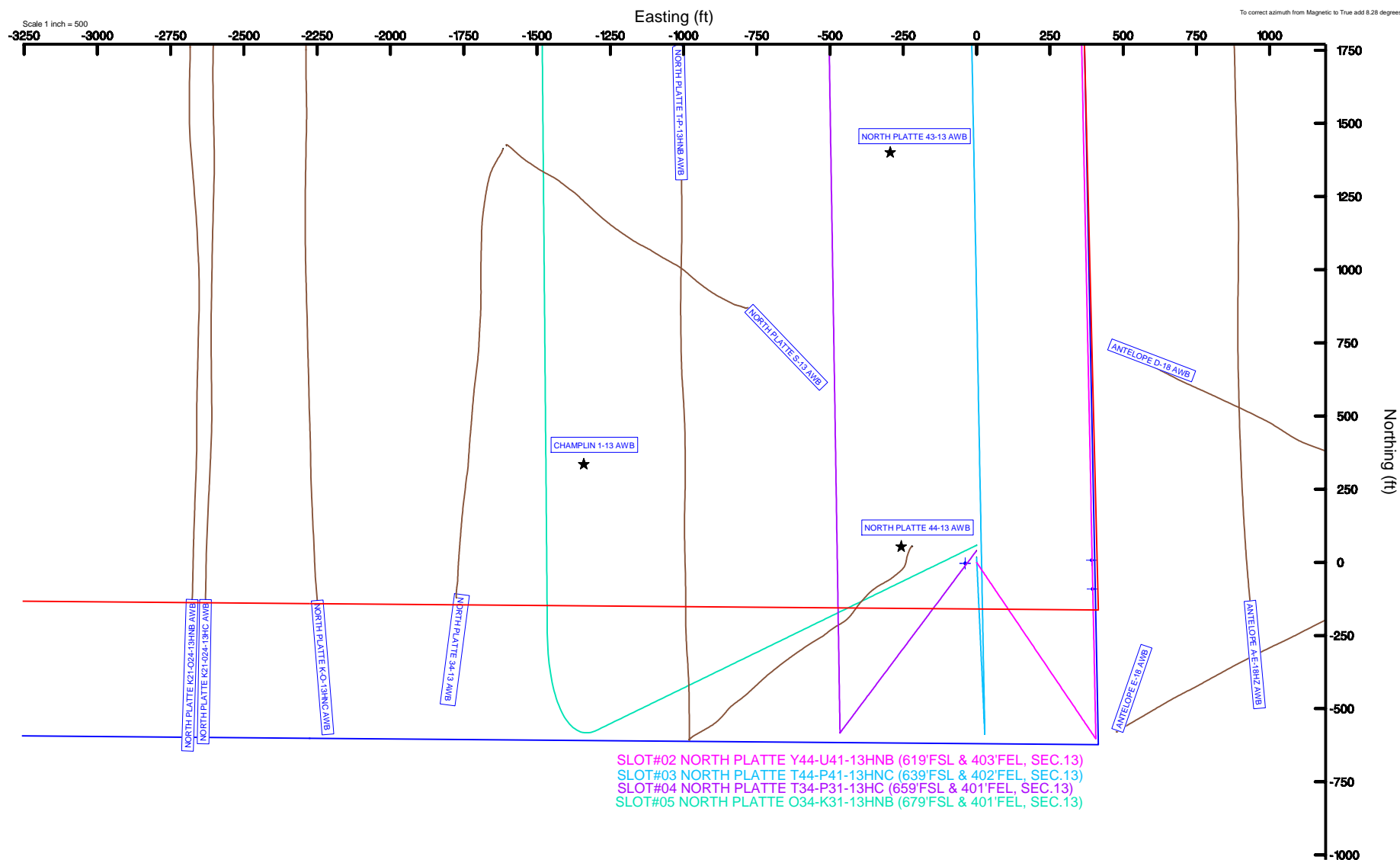
Location:	COLORADO	Slot:	SLOT#02 NORTH PLATTE Y44-U41-13HNB (619'FSL & 403'FEL, SEC.13)
Field:	WELD COUNTY	Well:	NORTH PLATTE Y44-U41-13HNB
Facility:	SEC.13-T05N-R63W	Wellbore:	NORTH PLATTE Y44-U41-13HNB PWB

Plot reference wellpath is NORTH PLATTE Y44-U41-13HNB PWP (REV-B.0)	
True vertical depths are referenced to XTREME 22 (17KB) (RKB)	Grid System: NAD83 / Lambert Colorado SP, Northern Zone (501), US feet
Measured depths are referenced to XTREME 22 (17KB) (RKB)	North Reference: True north
XTREME 22 (17KB) (RKB) to Mean Sea Level: 4514 feet	Scale: True distance
Mean Sea Level to Mud line (At Slot: SLOT#02 NORTH PLATTE Y44-U41-13HNB (619FSL & 403FEL, SEC.13)): 0 feet	Depths are in feet
Coordinates are in feet referenced to Slot	Created by: inioamir on 1/28/2016



BGGM (1945.0 to 2017.0) Dip: 67.02° Field: 52615.7 nT  
Magnetic North is 8.28 degrees East of True North (at 1/8/2016)

To correct azimuth from Magnetic to True add 8.28 degrees





# Planned Wellpath Report

NORTH PLATTE Y44-U41-13HNB PWP (REV-B.0)  
Page 1 of 6



## REFERENCE WELLPATH IDENTIFICATION

Operator	BONANZA CREEK OIL COMPANY	Slot	SLOT#02 NORTH PLATTE Y44-U41-13HNB (619'FSL & 403'FEL, SEC.13)
Area	COLORADO	Well	NORTH PLATTE Y44-U41-13HNB
Field	WELD COUNTY	Wellbore	NORTH PLATTE Y44-U41-13HNB PWB
Facility	SEC.13-T05N-R63W		

## REPORT SETUP INFORMATION

Projection System	NAD83 / Lambert Colorado SP, Northern Zone (501), US feet	Software System	WellArchitect® 4.1.1
North Reference	True	User	Ingmjmr
Scale	0.99996	Report Generated	1/28/2016 at 11:46:42 AM
Convergence at slot	0.73° East	Database/Source file	WA_DEN_Denver_Defn/NORTH_PLATTE_Y44-U41-13HNB_PWB.xml

## WELLPATH LOCATION

	Local coordinates		Grid coordinates		Geographic coordinates	
	North[ft]	East[ft]	Easting[US ft]	Northing[US ft]	Latitude	Longitude
Slot Location	3.64	39.00	3312913.90	1388189.26	40°23'36.744"N	104°22'35.580"W
Facility Reference Pt			3312874.96	1388185.13	40°23'36.708"N	104°22'36.084"W
Field Reference Pt			3335925.10	1457282.25	40°34'56.460"N	104°17'26.016"W

## WELLPATH DATUM

Calculation method	Minimum curvature	XTREME 22 (17'KB) (RKB) to Facility Vertical Datum	4614.00ft
Horizontal Reference Pt	Slot	XTREME 22 (17'KB) (RKB) to Mean Sea Level	4614.00ft
Vertical Reference Pt	XTREME 22 (17'KB) (RKB)	XTREME 22 (17'KB) (RKB) to Mud Line at Slot (SLOT#02 NORTH PLATTE Y44-U41-13HNB (619'FSL & 403'FEL, SEC.13))	4614.00ft
MD Reference Pt	XTREME 22 (17'KB) (RKB)	Section Origin	N 0.00, E 0.00 ft
Field Vertical Reference	Mean Sea Level	Section Azimuth	4.07°



# Planned Wellpath Report

NORTH PLATTE Y44-U41-13HNB PWP (REV-B.0)  
Page 2 of 6



## REFERENCE WELLPATH IDENTIFICATION

Operator	BONANZA CREEK OIL COMPANY	Slot	SLOT#02 NORTH PLATTE Y44-U41-13HNB (619'FSL & 403'FEL, SEC.13)
Area	COLORADO	Well	NORTH PLATTE Y44-U41-13HNB
Field	WELD COUNTY	Wellbore	NORTH PLATTE Y44-U41-13HNB PWB
Facility	SEC.13-T05N-R63W		

## WELLPATH DATA (128 stations) † = interpolated/extrapolated station

MD [ft]	Inclination [°]	Azimuth [°]	TVD [ft]	Vert Sect [ft]	North [ft]	East [ft]	DLS [°/100ft]	Comments
0.00†	0.000	146.000	0.00	0.00	0.00	0.00	0.00	
17.00	0.000	146.000	17.00	0.00	0.00	0.00	0.00	Tie On
117.00†	0.000	146.000	117.00	0.00	0.00	0.00	0.00	
217.00†	0.000	146.000	217.00	0.00	0.00	0.00	0.00	
317.00†	0.000	146.000	317.00	0.00	0.00	0.00	0.00	
417.00†	0.000	146.000	417.00	0.00	0.00	0.00	0.00	
517.00†	0.000	146.000	517.00	0.00	0.00	0.00	0.00	
617.00†	0.000	146.000	617.00	0.00	0.00	0.00	0.00	
717.00†	0.000	146.000	717.00	0.00	0.00	0.00	0.00	
817.00†	0.000	146.000	817.00	0.00	0.00	0.00	0.00	
917.00†	0.000	146.000	917.00	0.00	0.00	0.00	0.00	
1017.00†	0.000	146.000	1017.00	0.00	0.00	0.00	0.00	
1117.00†	0.000	146.000	1117.00	0.00	0.00	0.00	0.00	
1217.00†	0.000	146.000	1217.00	0.00	0.00	0.00	0.00	
1317.00†	0.000	146.000	1317.00	0.00	0.00	0.00	0.00	
1417.00†	0.000	146.000	1417.00	0.00	0.00	0.00	0.00	
1517.00†	0.000	146.000	1517.00	0.00	0.00	0.00	0.00	
1617.00†	0.000	146.000	1617.00	0.00	0.00	0.00	0.00	
1717.00†	0.000	146.000	1717.00	0.00	0.00	0.00	0.00	
1817.00†	0.000	146.000	1817.00	0.00	0.00	0.00	0.00	
1917.00†	0.000	146.000	1917.00	0.00	0.00	0.00	0.00	
2017.00†	0.000	146.000	2017.00	0.00	0.00	0.00	0.00	
2117.00†	0.000	146.000	2117.00	0.00	0.00	0.00	0.00	
2200.00	0.000	146.000	2200.00	0.00	0.00	0.00	0.00	End of Tangent
2217.00†	0.340	146.000	2217.00	-0.04	-0.04	0.03	2.00	
2317.00†	2.340	146.000	2316.97	-1.88	-1.98	1.34	2.00	
2417.00†	4.340	146.000	2416.79	-6.47	-6.81	4.59	2.00	
2517.00†	6.340	146.000	2516.35	-13.79	-14.53	9.80	2.00	
2617.00†	8.340	146.000	2615.53	-23.85	-25.12	16.94	2.00	
2717.00†	10.340	146.000	2714.20	-36.63	-38.57	26.02	2.00	
2817.00†	12.340	146.000	2812.24	-52.11	-54.87	37.01	2.00	
2917.00†	14.340	146.000	2909.54	-70.27	-74.00	49.91	2.00	
3017.00†	16.340	146.000	3005.97	-91.10	-95.93	64.70	2.00	
3050.00	17.000	146.000	3037.58	-98.55	-103.78	70.00	2.00	End of Build
3117.00†	17.000	146.000	3101.66	-113.97	-120.02	80.95	0.00	
3217.00†	17.000	146.000	3197.29	-136.99	-144.26	97.30	0.00	
3317.00†	17.000	146.000	3292.92	-160.00	-168.49	113.65	0.00	
3396.56†	17.000	146.000	3369.00	-178.32	-187.78	126.66	0.00	PARKMAN
3417.00†	17.000	146.000	3388.55	-183.02	-192.73	130.00	0.00	
3517.00†	17.000	146.000	3484.18	-206.04	-216.97	146.35	0.00	
3617.00†	17.000	146.000	3579.81	-229.06	-241.21	162.70	0.00	
3717.00†	17.000	146.000	3675.44	-252.07	-265.45	179.05	0.00	
3817.00†	17.000	146.000	3771.07	-275.09	-289.69	195.40	0.00	
3917.00†	17.000	146.000	3866.70	-298.11	-313.93	211.75	0.00	
4017.00†	17.000	146.000	3962.33	-321.13	-338.17	228.10	0.00	



# Planned Wellpath Report

NORTH PLATTE Y44-U41-13HNB PWP (REV-B.0)  
Page 3 of 6



## REFERENCE WELLPATH IDENTIFICATION

Operator	BONANZA CREEK OIL COMPANY	Slot	SLOT#02 NORTH PLATTE Y44-U41-13HNB (619'FSL & 403'FEL, SEC.13)
Area	COLORADO	Well	NORTH PLATTE Y44-U41-13HNB
Field	WELD COUNTY	Wellbore	NORTH PLATTE Y44-U41-13HNB PWB
Facility	SEC.13-T05N-R63W		

## WELLPATH DATA (128 stations) † = interpolated/extrapolated station

MD [ft]	Inclination [°]	Azimuth [°]	TVD [ft]	Vert Sect [ft]	North [ft]	East [ft]	DLS [°/100ft]	Comments
4117.00†	17.000	146.000	4057.96	-344.14	-362.40	244.44	0.00	
4217.00†	17.000	146.000	4153.59	-367.16	-386.64	260.79	0.00	
4317.00†	17.000	146.000	4249.22	-390.18	-410.88	277.14	0.00	
4417.00†	17.000	146.000	4344.85	-413.20	-435.12	293.49	0.00	
4517.00†	17.000	146.000	4440.48	-436.21	-459.36	309.84	0.00	
4617.00†	17.000	146.000	4536.11	-459.23	-483.60	326.19	0.00	
4683.12	17.000	146.000	4599.35	-474.45	-499.63	337.00	0.00	End of Tangent
4717.00†	16.322	146.000	4631.80	-482.10	-507.68	342.43	2.00	
4817.00†	14.322	146.000	4728.24	-502.90	-529.58	357.21	2.00	
4917.00†	12.322	146.000	4825.55	-521.04	-548.69	370.09	2.00	
5017.00†	10.322	146.000	4923.59	-536.50	-564.96	381.07	2.00	
5117.00†	8.322	146.000	5022.27	-549.25	-578.39	390.13	2.00	
5217.00†	6.322	146.000	5121.45	-559.28	-588.96	397.26	2.00	
5317.00†	4.322	146.000	5221.01	-566.58	-596.65	402.44	2.00	
5417.00†	2.322	146.000	5320.84	-571.15	-601.45	405.68	2.00	
5517.00†	0.322	146.000	5420.81	-572.96	-603.36	406.97	2.00	
5533.12	0.000	358.826	5436.93	-573.00	-603.40	407.00	2.00	End of Drop
5617.00†	0.000	358.826	5520.81	-573.00	-603.40	407.00	0.00	
5717.00†	0.000	358.826	5620.81	-573.00	-603.40	407.00	0.00	
5817.00†	0.000	358.826	5720.81	-573.00	-603.40	407.00	0.00	
5890.42	0.000	358.826	5794.23	-573.00	-603.40	407.00	0.00	End of Tangent
5917.00†	2.923	358.826	5820.80	-572.32	-602.72	406.99	11.00	
6017.00†	13.923	358.826	5919.56	-557.76	-588.10	406.69	11.00	
6117.00†	24.923	358.826	6013.73	-524.69	-554.91	406.01	11.00	
6217.00†	35.923	358.826	6099.83	-474.35	-504.36	404.97	11.00	
6259.25†	40.571	358.826	6133.00	-448.31	-478.21	404.43	11.00	SHARON SPRINGS
6300.16†	45.071	358.826	6163.00	-420.62	-450.42	403.86	11.00	SHARON SPRINGS "A"
6317.00†	46.923	358.826	6174.70	-408.56	-438.31	403.62	11.00	
6357.21†	51.347	358.826	6201.00	-378.29	-407.91	402.99	11.00	SHARON SPRINGS "B"
6417.00†	57.923	358.826	6235.58	-329.76	-359.19	402.00	11.00	
6425.42†	58.850	358.826	6240.00	-322.62	-352.02	401.85	11.00	NIOBRARA "A" CHALK
6453.78†	61.969	358.826	6254.00	-298.07	-327.37	401.34	11.00	NIOBRARA "A" MARL
6517.00†	68.923	358.826	6280.26	-240.84	-269.92	400.17	11.00	
6526.79	70.000	358.826	6283.69	-231.71	-260.75	399.98	11.00	End of Build
6596.79	70.000	358.826	6307.63	-166.21	-194.99	398.63	0.00	End of Tangent
6617.00†	72.223	358.826	6314.17	-147.17	-175.87	398.24	11.00	
6619.73†	72.523	358.826	6315.00	-144.58	-173.27	398.19	11.00	NIOBRARA "B" CHALK
6717.00†	83.223	358.826	6335.40	-50.01	-78.33	396.24	11.00	
6778.61	90.001	358.826	6339.04	11.20	-16.87	394.98	11.00	End of 3D Arc
6817.00†	90.001	358.826	6339.04	49.43	21.51	394.19	0.00	
6917.00†	90.001	358.826	6339.04	149.01	121.49	392.14	0.00	
7017.00†	90.001	358.826	6339.04	248.59	221.47	390.09	0.00	
7117.00†	90.001	358.826	6339.04	348.17	321.45	388.04	0.00	
7217.00†	90.001	358.826	6339.04	447.75	421.43	385.99	0.00	
7317.00†	90.001	358.826	6339.04	547.34	521.40	383.94	0.00	



# Planned Wellpath Report

NORTH PLATTE Y44-U41-13HNB PWP (REV-B.0)  
Page 4 of 6



## REFERENCE WELLPATH IDENTIFICATION

Operator	BONANZA CREEK OIL COMPANY	Slot	SLOT#02 NORTH PLATTE Y44-U41-13HNB (619'FSL & 403'FEL, SEC.13)
Area	COLORADO	Well	NORTH PLATTE Y44-U41-13HNB
Field	WELD COUNTY	Wellbore	NORTH PLATTE Y44-U41-13HNB PWB
Facility	SEC.13-T05N-R63W		

## WELLPATH DATA (128 stations) † = interpolated/extrapolated station

MD [ft]	Inclination [°]	Azimuth [°]	TVD [ft]	Vert Sect [ft]	North [ft]	East [ft]	DLS [°/100ft]	Comments
7417.00†	90.001	358.826	6339.04	646.92	621.38	381.89	0.00	
7517.00†	90.001	358.826	6339.04	746.50	721.36	379.84	0.00	
7617.00†	90.001	358.826	6339.03	846.08	821.34	377.79	0.00	
7717.00†	90.001	358.826	6339.03	945.66	921.32	375.74	0.00	
7817.00†	90.001	358.826	6339.03	1045.24	1021.30	373.70	0.00	
7917.00†	90.001	358.826	6339.03	1144.82	1121.28	371.65	0.00	
8017.00†	90.001	358.826	6339.03	1244.41	1221.26	369.60	0.00	
8117.00†	90.001	358.826	6339.03	1343.99	1321.24	367.55	0.00	
8217.00†	90.001	358.826	6339.03	1443.57	1421.22	365.50	0.00	
8317.00†	90.001	358.826	6339.03	1543.15	1521.19	363.45	0.00	
8417.00†	90.001	358.826	6339.03	1642.73	1621.17	361.40	0.00	
8517.00†	90.001	358.826	6339.03	1742.31	1721.15	359.35	0.00	
8617.00†	90.001	358.826	6339.02	1841.89	1821.13	357.30	0.00	
8717.00†	90.001	358.826	6339.02	1941.48	1921.11	355.25	0.00	
8817.00†	90.001	358.826	6339.02	2041.06	2021.09	353.20	0.00	
8917.00†	90.001	358.826	6339.02	2140.64	2121.07	351.15	0.00	
9017.00†	90.001	358.826	6339.02	2240.22	2221.05	349.10	0.00	
9117.00†	90.001	358.826	6339.02	2339.80	2321.03	347.05	0.00	
9217.00†	90.001	358.826	6339.02	2439.38	2421.01	345.00	0.00	
9317.00†	90.001	358.826	6339.02	2538.97	2520.98	342.95	0.00	
9417.00†	90.001	358.826	6339.02	2638.55	2620.96	340.90	0.00	
9517.00†	90.001	358.826	6339.02	2738.13	2720.94	338.85	0.00	
9617.00†	90.001	358.826	6339.01	2837.71	2820.92	336.80	0.00	
9717.00†	90.001	358.826	6339.01	2937.29	2920.90	334.75	0.00	
9817.00†	90.001	358.826	6339.01	3036.87	3020.88	332.70	0.00	
9917.00†	90.001	358.826	6339.01	3136.45	3120.86	330.65	0.00	
10017.00†	90.001	358.826	6339.01	3236.04	3220.84	328.60	0.00	
10117.00†	90.001	358.826	6339.01	3335.62	3320.82	326.55	0.00	
10217.00†	90.001	358.826	6339.01	3435.20	3420.80	324.50	0.00	
10317.00†	90.001	358.826	6339.01	3534.78	3520.77	322.45	0.00	
10417.00†	90.001	358.826	6339.01	3634.36	3620.75	320.40	0.00	
10517.00†	90.001	358.826	6339.01	3733.94	3720.73	318.35	0.00	
10617.00†	90.001	358.826	6339.00	3833.52	3820.71	316.30	0.00	
10717.00†	90.001	358.826	6339.00	3933.11	3920.69	314.25	0.00	
10817.00†	90.001	358.826	6339.00	4032.69	4020.67	312.20	0.00	
10917.00†	90.001	358.826	6339.00	4132.27	4120.65	310.15	0.00	
11017.00†	90.001	358.826	6339.00	4231.85	4220.63	308.10	0.00	
11102.56	90.001	358.826	6339.00 <sup>1</sup>	4317.06	4306.17	306.35	0.00	End of Tangent



# Planned Wellpath Report

NORTH PLATTE Y44-U41-13HNB PWP (REV-B.0)  
Page 5 of 6



## REFERENCE WELLPATH IDENTIFICATION

Operator	BONANZA CREEK OIL COMPANY	Slot	SLOT#02 NORTH PLATTE Y44-U41-13HNB (619'FSL & 403'FEL, SEC.13)
Area	COLORADO	Well	NORTH PLATTE Y44-U41-13HNB
Field	WELD COUNTY	Wellbore	NORTH PLATTE Y44-U41-13HNB PWB
Facility	SEC.13-T05N-R63W		

## HOLE & CASING SECTIONS -

Ref Wellbore: NORTH PLATTE Y44-U41-13HNB PWB

Ref Wellpath: NORTH PLATTE Y44-U41-13HNB PWP (REV-B.0)

String/Diameter	Start MD [ft]	End MD [ft]	Interval [ft]	Start TVD [ft]	End TVD [ft]	Start N/S [ft]	Start E/W [ft]	End N/S [ft]	End E/W [ft]
13.5in Open Hole	17.00	1600.00	1583.00	17.00	1600.00	0.00	0.00	0.00	0.00
9.625in Casing Surface	17.00	1600.00	1583.00	17.00	1600.00	0.00	0.00	0.00	0.00
8.75in Open Hole	1600.00	11102.56	9502.56	1600.00	6339.00	0.00	0.00	4306.17	306.35
5.5in Casing Production	17.00	11102.56	11085.56	17.00	6339.00	0.00	0.00	4306.17	306.35

## TARGETS

Name	MD [ft]	TVD [ft]	North [ft]	East [ft]	Grid East [US ft]	Grid North [US ft]	Latitude	Longitude	Shape
SEC.13-T05N-R63W		0.00	-3.64	-39.00	3312874.96	1388185.13	40°23'36.708"N	104°22'36.084"W	polygon
1) NORTH PLATTE Y44-U41-13HNB BHL ON PLAT REV-1 (470'FNL & 10'FEL, SEC.13)	11102.56	6339.00	4306.17	306.35	3313165.66	1392498.79	40°24'19.296"N	104°22'31.620"W	point
NORTH PLATTE Y44-U41-13HNB TARGET 1 REV-1 (531'FSL & 10'FEL, SEC.13)		6339.00	-91.07	395.54	3313310.55	1388103.21	40°23'35.844"N	104°22'30.468"W	point
NORTH PLATTE Y44-U41-13HNB TOP REV-1 (631'FSL & 388'FEL, SEC.13)		6339.00	7.29	392.75	3313306.52	1388201.53	40°23'36.816"N	104°22'30.504"W	point
SEC.13-T05N-R63W (460' SETBACK)		6514.00	-3.64	-39.00	3312874.96	1388185.13	40°23'36.708"N	104°22'36.084"W	polygon

## SURVEY PROGRAM -

Ref Wellbore: NORTH PLATTE Y44-U41-13HNB PWB

Ref Wellpath: NORTH PLATTE Y44-U41-13HNB PWP (REV-B.0)

Start MD [ft]	End MD [ft]	Positional Uncertainty Model	Log Name/Comment	Wellbore
17.00	11102.56	Custom NaviTrak (MagCorr) (Rockies 0.03Gt model)		NORTH PLATTE Y44-U41-13HNB PWB





# Planned Wellpath Report

NORTH PLATTE Y44-U41-13HNB PWP (REV-B.0)  
Page 6 of 6



## REFERENCE WELLPATH IDENTIFICATION

Operator	BONANZA CREEK OIL COMPANY	Slot	SLOT#02 NORTH PLATTE Y44-U41-13HNB (619'FSL & 403'FEL, SEC.13)
Area	COLORADO	Well	NORTH PLATTE Y44-U41-13HNB
Field	WELD COUNTY	Wellbore	NORTH PLATTE Y44-U41-13HNB PWB
Facility	SEC.13-T05N-R63W		

## WELLPATH COMMENTS

MD [ft]	Inclination [°]	Azimuth [°]	TVD [ft]	Comment
3396.56	17.000	146.000	3369.00	PARKMAN
6259.25	40.571	358.826	6133.00	SHARON SPRINGS
6300.16	45.071	358.826	6163.00	SHARON SPRINGS "A"
6357.21	51.347	358.826	6201.00	SHARON SPRINGS "B"
6425.42	58.850	358.826	6240.00	NIOBRARA "A" CHALK
6453.78	61.969	358.826	6254.00	NIOBRARA "A" MARL
6619.73	72.523	358.826	6315.00	NIOBRARA "B" CHALK

## DESIGN COMMENTS

MD [ft]	Inclination [°]	Azimuth [°]	TVD [ft]	Comment
17.00	0.000	146.000	17.00	Tie On
2200.00	0.000	146.000	2200.00	End of Tangent
3050.00	17.000	146.000	3037.58	End of Build
4683.12	17.000	146.000	4599.35	End of Tangent
5533.12	0.000	358.826	5436.93	End of Drop
5890.42	0.000	358.826	5794.23	End of Tangent
6526.79	70.000	358.826	6283.69	End of Build
6596.79	70.000	358.826	6307.63	End of Tangent
6778.61	90.001	358.826	6339.04	End of 3D Arc
11102.56	90.001	358.826	6339.00	End of Tangent