

Location:	COLORADO	Slot:	SLOT#03 NORTH PLATTE T44-P41-13HNC (639'FSL & 402'FEL, SEC.13)
Field:	WELD COUNTY	Well:	NORTH PLATTE T44-P41-13HNC
Facility:	SEC.13-T05N-R63W	Wellbore:	NORTH PLATTE T44-P41-13HNC PWB

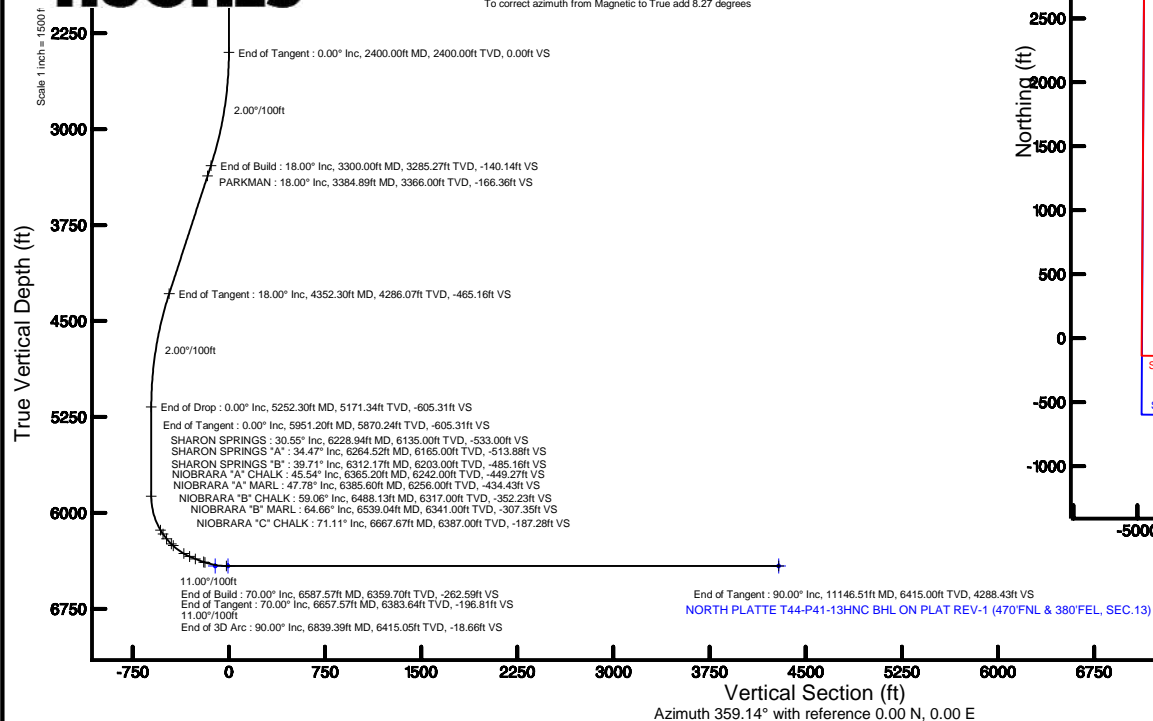
True vertical depths are referenced to XTREME 22 (17KB) (RKB)	Grid System: NAD83 / Lambert Colorado SP, Northern Zone (501), US feet
Measured depths are referenced to XTREME 22 (17KB) (RKB)	North Reference: True north
XTREME 22 (17KB) (RKB) to Mean Sea Level: 4614 feet	Scale: True distance
Mean Sea Level to Mud line (At Slot: SLOTH#03 NORTH PLATTE T44-P41-13HNC (639FSL & 402FEL, SEC.13)): 0 feet	Depths are in feet
Coordinates are in feet referenced to Slot	Created by: ingnjamr on 1/28/2016

Facility Name			Grid East (US ft)	Grid North (US ft)	Latitude	Longitude
SEC-13-T09N-R63W			3312874.958	1388185.127	40°22'35.708"N	104°22'35.084"W
Slot	Local N (ft)	Local E (ft)	Grid East (US ft)	Grid North (US ft)	Latitude	Longitude
SLOT#03 NORTH PLATTE T44-P41-13#NC (E39FSL & 402FEL, SEC.13)	21.86	39.00	3312913.673	1388207.477	40°22'35.924"N	104°22'35.589"W
XTREME 22 (17Kb) (R6K) to Mud line (At Slot: SLOT#03 NORTH PLATTE T44-P41-13#NC (E39FSL & 402FEL, SEC.13))					4614ft	
Mean Sea Level to Mud line (At Slot: SLOT#03 NORTH PLATTE T44-P41-13#NC (E39FSL & 402FEL, SEC.13))					0ft	
XTREME 22 (17Kb) (R6K) to Mean Sea Level					4614ft	



BGM (1945.0 to 2017.0) Dip: 67.01° Field: 52609.5 nT
Magnetic North is 8.27 degrees East of True North (at 1/28/2016)

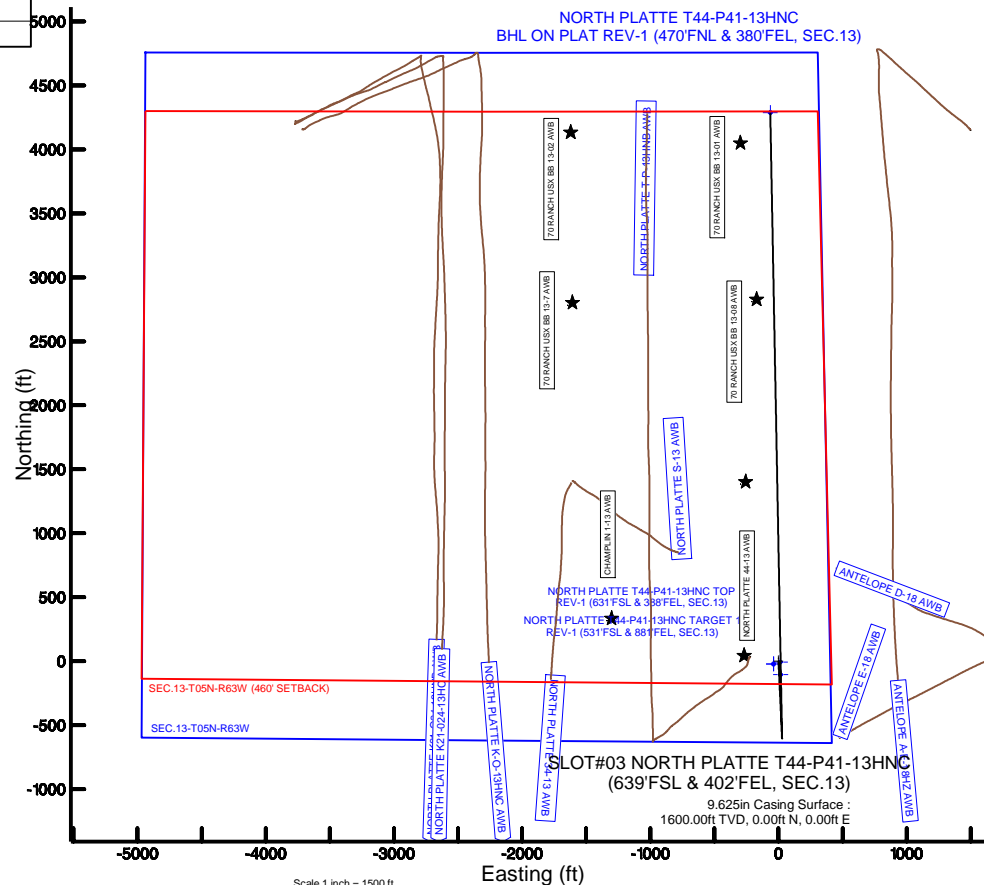
To correct azimuth from Magnetic to True add 8.27 degrees



Design Comment	MD (ft)	Inc (°)	Az (°)	TVD (ft)	Local N (ft)	Local E (ft)	DLS (°/100ft)	VS (ft)
Tie On	17.00	0.000	177.350	17.00	0.00	0.00	0.00	0.00
End of Tangent	2400.00	0.000	177.350	2400.00	0.00	0.00	0.00	0.00
End of Build	3300.00	18.000	177.350	3285.27	-140.06	6.48	2.00	-140.14
End of Tangent	4352.30	18.000	177.350	4286.07	-464.89	21.52	0.00	-465.16
End of Drop	5252.30	0.000	358.922	5171.34	-604.96	28.00	2.00	-605.31
End of Tangent	5951.20	0.000	358.922	5870.24	-604.96	28.00	0.00	-605.31
End of Build	6587.57	70.000	358.922	6359.70	-262.30	21.55	11.00	-262.59
End of Tangent	6657.57	70.000	358.922	6383.64	-196.53	20.31	0.00	-196.81
End of 3D Arc	6839.39	90.001	358.922	6415.05	-18.41	16.96	11.00	-18.66
End of Tangent	11146.51	90.001	358.922	6415.00	4287.95	-64.06	0.00	4288.43

Start MD (ft)	End MD (ft)	Tool	Model	Log Name/Comment	Wellbore
17.00	11146.51	NavTrak	Custom NavTrak (MagCorr) (Rockies 0.03Gt model)		NORTH PLATTE T44-P41-13NC PWB

MD (ft)	Inc (°)	Az (°)	TVD (ft)	Local N (ft)	Local E (ft)	Grid East (US ft)	Grid North (US ft)	Latitude	Longitude
11146.51	90.001	358.922	6415.00	4287.95	-64.06	3312795.30	1392494.10	40°24'19.296"N	104°22'36.408"W



Scale 1 inch = 1500 ft

Scale 1 inch = 1500 ft

BONANZA CREEK OIL COMPANY

Location: COLORADO

Slot: SLOT#02 NORTH PLATTE Y44-U41-13HNB (619'FSL & 403'FEL, SEC.13)

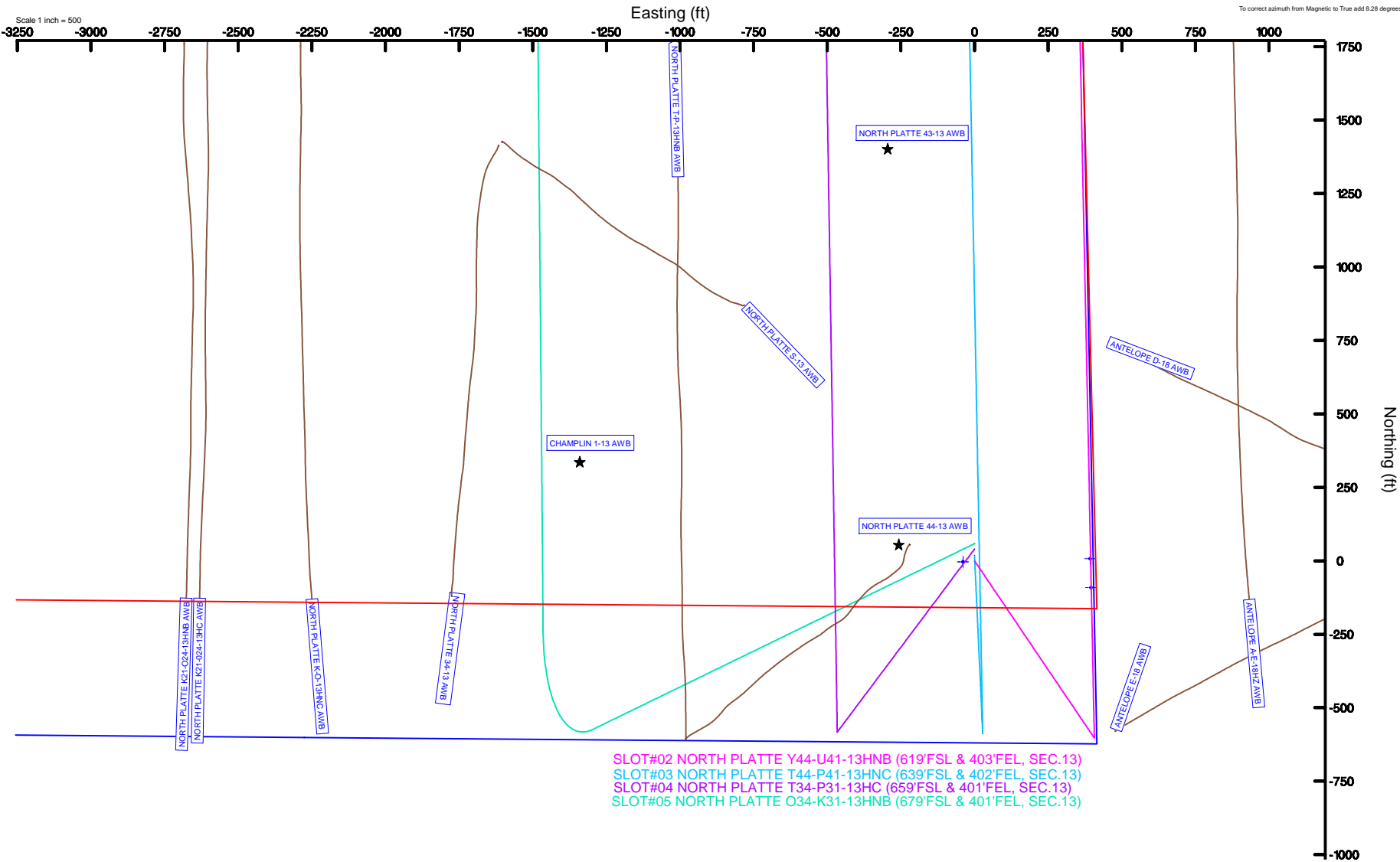
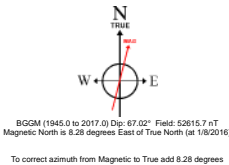
Field: WELD COUNTY

Well: NORTH PLATTE Y44-U41-13HNB

Facility: SEC.13-T05N-R63W

Wellbore: NORTH PLATTE Y44-U41-13HNB PWB

Plot reference wellpath is NORTH PLATTE Y44-U41-13HNB PWB (REV-B.0)	
True vertical depths are referenced to XTREME 22 (17'KB) (RKB)	Grid System: NAD83 / Lambert Colorado SP, Northern Zone (501), US feet
Measured depths are referenced to XTREME 22 (17'KB) (RKB)	North Reference: True north
XTREME 22 (17'KB) (RKB) to Mean Sea Level: 4614 feet	Scale: True distance
Mean Sea Level to Mud line (At Slot: SLOT#02 NORTH PLATTE Y44-U41-13HNB (619'FSL & 403'FEL, SEC.13)): 0 feet	Depths are in feet
Coordinates are in feet referenced to Slot	Created by: ingnjamr on 1/28/2016





Planned Wellpath Report

NORTH PLATTE T44-P41-13HNC PWP (REV-B.0)
Page 1 of 6



REFERENCE WELLPATH IDENTIFICATION

Operator	BONANZA CREEK OIL COMPANY	Slot	SLOT#03 NORTH PLATTE T44-P41-13HNC (639'FSL & 402'FEL, SEC.13)
Area	COLORADO	Well	NORTH PLATTE T44-P41-13HNC
Field	WELD COUNTY	Wellbore	NORTH PLATTE T44-P41-13HNC PWB
Facility	SEC.13-T05N-R63W		

REPORT SETUP INFORMATION

Projection System	NAD83 / Lambert Colorado SP, Northern Zone (501), US feet	Software System	WellArchitect® 4.1.1
North Reference	True	User	Ingmjmr
Scale	0.99996	Report Generated	1/28/2016 at 11:48:53 AM
Convergence at slot	0.73° East	Database/Source file	WA_DEN_Denver_Defn/NORTH_PLATTE_T44-P41-13HNC_PWB.xml

WELLPATH LOCATION

	Local coordinates		Grid coordinates		Geographic coordinates	
	North[ft]	East[ft]	Easting[US ft]	Northing[US ft]	Latitude	Longitude
Slot Location	21.86	39.00	3312913.67	1388207.48	40°23'36.924"N	104°22'35.580"W
Facility Reference Pt			3312874.96	1388185.13	40°23'36.708"N	104°22'36.084"W
Field Reference Pt			3335925.10	1457282.25	40°34'56.460"N	104°17'26.016"W

WELLPATH DATUM

Calculation method	Minimum curvature	XTREME 22 (17'KB) (RKB) to Facility Vertical Datum	4614.00ft
Horizontal Reference Pt	Slot	XTREME 22 (17'KB) (RKB) to Mean Sea Level	4614.00ft
Vertical Reference Pt	XTREME 22 (17'KB) (RKB)	XTREME 22 (17'KB) (RKB) to Mud Line at Slot (SLOT#03 NORTH PLATTE T44-P41-13HNC (639'FSL & 402'FEL, SEC.13))	4614.00ft
MD Reference Pt	XTREME 22 (17'KB) (RKB)	Section Origin	N 0.00, E 0.00 ft
Field Vertical Reference	Mean Sea Level	Section Azimuth	359.14°



Planned Wellpath Report

NORTH PLATTE T44-P41-13HNC PWP (REV-B.0)
Page 2 of 6



REFERENCE WELLPATH IDENTIFICATION

Operator	BONANZA CREEK OIL COMPANY	Slot	SLOT#03 NORTH PLATTE T44-P41-13HNC (639'FSL & 402'FEL, SEC.13)
Area	COLORADO	Well	NORTH PLATTE T44-P41-13HNC
Field	WELD COUNTY	Wellbore	NORTH PLATTE T44-P41-13HNC PWB
Facility	SEC.13-T05N-R63W		

WELLPATH DATA (131 stations) † = interpolated/extrapolated station

MD [ft]	Inclination [°]	Azimuth [°]	TVD [ft]	Vert Sect [ft]	North [ft]	East [ft]	DLS [°/100ft]	Comments
0.00†	0.000	177.350	0.00	0.00	0.00	0.00	0.00	
17.00	0.000	177.350	17.00	0.00	0.00	0.00	0.00	Tie On
117.00†	0.000	177.350	117.00	0.00	0.00	0.00	0.00	
217.00†	0.000	177.350	217.00	0.00	0.00	0.00	0.00	
317.00†	0.000	177.350	317.00	0.00	0.00	0.00	0.00	
417.00†	0.000	177.350	417.00	0.00	0.00	0.00	0.00	
517.00†	0.000	177.350	517.00	0.00	0.00	0.00	0.00	
617.00†	0.000	177.350	617.00	0.00	0.00	0.00	0.00	
717.00†	0.000	177.350	717.00	0.00	0.00	0.00	0.00	
817.00†	0.000	177.350	817.00	0.00	0.00	0.00	0.00	
917.00†	0.000	177.350	917.00	0.00	0.00	0.00	0.00	
1017.00†	0.000	177.350	1017.00	0.00	0.00	0.00	0.00	
1117.00†	0.000	177.350	1117.00	0.00	0.00	0.00	0.00	
1217.00†	0.000	177.350	1217.00	0.00	0.00	0.00	0.00	
1317.00†	0.000	177.350	1317.00	0.00	0.00	0.00	0.00	
1417.00†	0.000	177.350	1417.00	0.00	0.00	0.00	0.00	
1517.00†	0.000	177.350	1517.00	0.00	0.00	0.00	0.00	
1617.00†	0.000	177.350	1617.00	0.00	0.00	0.00	0.00	
1717.00†	0.000	177.350	1717.00	0.00	0.00	0.00	0.00	
1817.00†	0.000	177.350	1817.00	0.00	0.00	0.00	0.00	
1917.00†	0.000	177.350	1917.00	0.00	0.00	0.00	0.00	
2017.00†	0.000	177.350	2017.00	0.00	0.00	0.00	0.00	
2117.00†	0.000	177.350	2117.00	0.00	0.00	0.00	0.00	
2217.00†	0.000	177.350	2217.00	0.00	0.00	0.00	0.00	
2317.00†	0.000	177.350	2317.00	0.00	0.00	0.00	0.00	
2400.00	0.000	177.350	2400.00	0.00	0.00	0.00	0.00	End of Tangent
2417.00†	0.340	177.350	2417.00	-0.05	-0.05	0.00	2.00	
2517.00†	2.340	177.350	2516.97	-2.39	-2.39	0.11	2.00	
2617.00†	4.340	177.350	2616.79	-8.21	-8.21	0.38	2.00	
2717.00†	6.340	177.350	2716.35	-17.51	-17.50	0.81	2.00	
2817.00†	8.340	177.350	2815.53	-30.28	-30.26	1.40	2.00	
2917.00†	10.340	177.350	2914.20	-46.50	-46.47	2.15	2.00	
3017.00†	12.340	177.350	3012.24	-66.15	-66.12	3.06	2.00	
3117.00†	14.340	177.350	3109.54	-89.21	-89.16	4.13	2.00	
3217.00†	16.340	177.350	3205.97	-115.65	-115.59	5.35	2.00	
3300.00	18.000	177.350	3285.27	-140.14	-140.06	6.48	2.00	End of Build
3317.00†	18.000	177.350	3301.44	-145.39	-145.31	6.73	0.00	
3384.89†	18.000	177.350	3366.00	-166.36	-166.27	7.70	0.00	PARKMAN
3417.00†	18.000	177.350	3396.54	-176.28	-176.18	8.15	0.00	
3517.00†	18.000	177.350	3491.65	-207.17	-207.05	9.58	0.00	
3617.00†	18.000	177.350	3586.75	-238.05	-237.92	11.01	0.00	
3717.00†	18.000	177.350	3681.86	-268.94	-268.79	12.44	0.00	
3817.00†	18.000	177.350	3776.96	-299.83	-299.65	13.87	0.00	
3917.00†	18.000	177.350	3872.07	-330.71	-330.52	15.30	0.00	
4017.00†	18.000	177.350	3967.18	-361.60	-361.39	16.73	0.00	



Planned Wellpath Report

NORTH PLATTE T44-P41-13HNC PWP (REV-B.0)

Page 3 of 6



REFERENCE WELLPATH IDENTIFICATION

Operator	BONANZA CREEK OIL COMPANY	Slot	SLOT#03 NORTH PLATTE T44-P41-13HNC (639'FSL & 402'FEL, SEC.13)
Area	COLORADO	Well	NORTH PLATTE T44-P41-13HNC
Field	WELD COUNTY	Wellbore	NORTH PLATTE T44-P41-13HNC PWB
Facility	SEC.13-T05N-R63W		

WELLPATH DATA (131 stations) † = interpolated/extrapolated station

MD [ft]	Inclination [°]	Azimuth [°]	TVD [ft]	Vert Sect [ft]	North [ft]	East [ft]	DLS [°/100ft]	Comments
4117.00†	18.000	177.350	4062.28	-392.49	-392.26	18.16	0.00	
4217.00†	18.000	177.350	4157.39	-423.37	-423.13	19.58	0.00	
4317.00†	18.000	177.350	4252.49	-454.26	-454.00	21.01	0.00	
4352.30	18.000	177.350	4286.07	-465.16	-464.89	21.52	0.00	End of Tangent
4417.00†	16.706	177.350	4347.82	-484.45	-484.17	22.41	2.00	
4517.00†	14.706	177.350	4444.08	-511.51	-511.21	23.66	2.00	
4617.00†	12.706	177.350	4541.23	-535.19	-534.88	24.76	2.00	
4717.00†	10.706	177.350	4639.14	-555.47	-555.14	25.69	2.00	
4817.00†	8.706	177.350	4737.71	-572.32	-571.98	26.47	2.00	
4917.00†	6.706	177.350	4836.80	-585.72	-585.38	27.09	2.00	
5017.00†	4.706	177.350	4936.30	-595.66	-595.31	27.55	2.00	
5117.00†	2.706	177.350	5036.08	-602.12	-601.77	27.85	2.00	
5217.00†	0.706	177.350	5136.03	-605.09	-604.74	27.99	2.00	
5252.30	0.000	358.922	5171.34	-605.31	-604.96	28.00	2.00	End of Drop
5317.00†	0.000	358.922	5236.03	-605.31	-604.96	28.00	0.00	
5417.00†	0.000	358.922	5336.03	-605.31	-604.96	28.00	0.00	
5517.00†	0.000	358.922	5436.03	-605.31	-604.96	28.00	0.00	
5617.00†	0.000	358.922	5536.03	-605.31	-604.96	28.00	0.00	
5717.00†	0.000	358.922	5636.03	-605.31	-604.96	28.00	0.00	
5817.00†	0.000	358.922	5736.03	-605.31	-604.96	28.00	0.00	
5917.00†	0.000	358.922	5836.03	-605.31	-604.96	28.00	0.00	
5951.20	0.000	358.922	5870.24	-605.31	-604.96	28.00	0.00	End of Tangent
6017.00†	7.238	358.922	5935.86	-601.16	-600.81	27.92	11.00	
6117.00†	18.238	358.922	6033.25	-579.14	-578.80	27.51	11.00	
6217.00†	29.238	358.922	6124.65	-538.95	-538.61	26.75	11.00	
6228.94†	30.551	358.922	6135.00	-533.00	-532.66	26.64	11.00	SHARON SPRINGS
6264.52†	34.465	358.922	6165.00	-513.88	-513.55	26.28	11.00	SHARON SPRINGS "A"
6312.17†	39.707	358.922	6203.00	-485.16	-484.83	25.74	11.00	SHARON SPRINGS "B"
6317.00†	40.238	358.922	6206.70	-482.06	-481.73	25.68	11.00	
6365.20†	45.539	358.922	6242.00	-449.27	-448.94	25.06	11.00	NIOBRARA "A" CHALK
6385.60†	47.784	358.922	6256.00	-434.43	-434.11	24.79	11.00	NIOBRARA "A" MARL
6417.00†	51.238	358.922	6276.39	-410.55	-410.23	24.34	11.00	
6488.13†	59.062	358.922	6317.00	-352.23	-351.92	23.24	11.00	NIOBRARA "B" CHALK
6517.00†	62.238	358.922	6331.15	-327.06	-326.76	22.77	11.00	
6539.04†	64.662	358.922	6341.00	-307.35	-307.05	22.39	11.00	NIOBRARA "B" MARL
6587.57	70.000	358.922	6359.70	-262.59	-262.30	21.55	11.00	End of Build
6617.00†	70.000	358.922	6369.76	-234.93	-234.64	21.03	0.00	
6657.57	70.000	358.922	6383.64	-196.81	-196.53	20.31	0.00	End of Tangent
6667.67†	71.111	358.922	6387.00	-187.28	-187.00	20.14	11.00	NIOBRARA "C" CHALK
6717.00†	76.538	358.922	6400.74	-139.93	-139.65	19.24	11.00	
6817.00†	87.538	358.922	6414.57	-41.04	-40.79	17.38	11.00	
6839.39	90.001	358.922	6415.05	-18.66	-18.41	16.96	11.00	End of 3D Arc
6917.00†	90.001	358.922	6415.05	58.95	59.19	15.50	0.00	
7017.00†	90.001	358.922	6415.05	158.95	159.17	13.62	0.00	
7117.00†	90.001	358.922	6415.05	258.95	259.15	11.74	0.00	



Planned Wellpath Report

NORTH PLATTE T44-P41-13HNC PWP (REV-B.0)
Page 4 of 6



REFERENCE WELLPATH IDENTIFICATION

Operator	BONANZA CREEK OIL COMPANY	Slot	SLOT#03 NORTH PLATTE T44-P41-13HNC (639'FSL & 402'FEL, SEC.13)
Area	COLORADO	Well	NORTH PLATTE T44-P41-13HNC
Field	WELD COUNTY	Wellbore	NORTH PLATTE T44-P41-13HNC PWB
Facility	SEC.13-T05N-R63W		

WELLPATH DATA (131 stations) † = interpolated/extrapolated station

MD [ft]	Inclination [°]	Azimuth [°]	TVD [ft]	Vert Sect [ft]	North [ft]	East [ft]	DLS [°/100ft]	Comments
7217.00†	90.001	358.922	6415.05	358.95	359.14	9.86	0.00	
7317.00†	90.001	358.922	6415.04	458.95	459.12	7.98	0.00	
7417.00†	90.001	358.922	6415.04	558.95	559.10	6.10	0.00	
7517.00†	90.001	358.922	6415.04	658.95	659.08	4.22	0.00	
7617.00†	90.001	358.922	6415.04	758.94	759.06	2.34	0.00	
7717.00†	90.001	358.922	6415.04	858.94	859.05	0.46	0.00	
7817.00†	90.001	358.922	6415.04	958.94	959.03	-1.43	0.00	
7917.00†	90.001	358.922	6415.04	1058.94	1059.01	-3.31	0.00	
8017.00†	90.001	358.922	6415.04	1158.94	1158.99	-5.19	0.00	
8117.00†	90.001	358.922	6415.03	1258.94	1258.98	-7.07	0.00	
8217.00†	90.001	358.922	6415.03	1358.94	1358.96	-8.95	0.00	
8317.00†	90.001	358.922	6415.03	1458.94	1458.94	-10.83	0.00	
8417.00†	90.001	358.922	6415.03	1558.94	1558.92	-12.71	0.00	
8517.00†	90.001	358.922	6415.03	1658.94	1658.91	-14.59	0.00	
8617.00†	90.001	358.922	6415.03	1758.94	1758.89	-16.47	0.00	
8717.00†	90.001	358.922	6415.03	1858.94	1858.87	-18.36	0.00	
8817.00†	90.001	358.922	6415.03	1958.94	1958.85	-20.24	0.00	
8917.00†	90.001	358.922	6415.03	2058.94	2058.83	-22.12	0.00	
9017.00†	90.001	358.922	6415.02	2158.93	2158.82	-24.00	0.00	
9117.00†	90.001	358.922	6415.02	2258.93	2258.80	-25.88	0.00	
9217.00†	90.001	358.922	6415.02	2358.93	2358.78	-27.76	0.00	
9317.00†	90.001	358.922	6415.02	2458.93	2458.76	-29.64	0.00	
9417.00†	90.001	358.922	6415.02	2558.93	2558.75	-31.52	0.00	
9517.00†	90.001	358.922	6415.02	2658.93	2658.73	-33.40	0.00	
9617.00†	90.001	358.922	6415.02	2758.93	2758.71	-35.28	0.00	
9717.00†	90.001	358.922	6415.02	2858.93	2858.69	-37.17	0.00	
9817.00†	90.001	358.922	6415.02	2958.93	2958.68	-39.05	0.00	
9917.00†	90.001	358.922	6415.01	3058.93	3058.66	-40.93	0.00	
10017.00†	90.001	358.922	6415.01	3158.93	3158.64	-42.81	0.00	
10117.00†	90.001	358.922	6415.01	3258.93	3258.62	-44.69	0.00	
10217.00†	90.001	358.922	6415.01	3358.93	3358.60	-46.57	0.00	
10317.00†	90.001	358.922	6415.01	3458.92	3458.59	-48.45	0.00	
10417.00†	90.001	358.922	6415.01	3558.92	3558.57	-50.33	0.00	
10517.00†	90.001	358.922	6415.01	3658.92	3658.55	-52.21	0.00	
10617.00†	90.001	358.922	6415.01	3758.92	3758.53	-54.09	0.00	
10717.00†	90.001	358.922	6415.00	3858.92	3858.52	-55.98	0.00	
10817.00†	90.001	358.922	6415.00	3958.92	3958.50	-57.86	0.00	
10917.00†	90.001	358.922	6415.00	4058.92	4058.48	-59.74	0.00	
11017.00†	90.001	358.922	6415.00	4158.92	4158.46	-61.62	0.00	
11117.00†	90.001	358.922	6415.00	4258.92	4258.45	-63.50	0.00	
11146.51	90.001	358.922	6415.00 [†]	4288.43	4287.95	-64.06	0.00	End of Tangent



Planned Wellpath Report

NORTH PLATTE T44-P41-13HNC PWP (REV-B.0)
Page 5 of 6



REFERENCE WELLPATH IDENTIFICATION

Operator	BONANZA CREEK OIL COMPANY	Slot	SLOT#03 NORTH PLATTE T44-P41-13HNC (639'FSL & 402'FEL, SEC.13)
Area	COLORADO	Well	NORTH PLATTE T44-P41-13HNC
Field	WELD COUNTY	Wellbore	NORTH PLATTE T44-P41-13HNC PWB
Facility	SEC.13-T05N-R63W		

HOLE & CASING SECTIONS -

Ref Wellbore: NORTH PLATTE T44-P41-13HNC PWB

Ref Wellpath: NORTH PLATTE T44-P41-13HNC PWP (REV-B.0)

String/Diameter	Start MD [ft]	End MD [ft]	Interval [ft]	Start TVD [ft]	End TVD [ft]	Start N/S [ft]	Start E/W [ft]	End N/S [ft]	End E/W [ft]
13.5in Open Hole	17.00	1600.00	1583.00	17.00	1600.00	0.00	0.00	0.00	0.00
9.625in Casing Surface	17.00	1600.00	1583.00	17.00	1600.00	0.00	0.00	0.00	0.00
8.75in Open Hole	1600.00	11146.51	9546.51	1600.00	6415.00	0.00	0.00	4287.95	-64.06
5.5in Casing Production	17.00	11146.51	11129.51	17.00	6415.00	0.00	0.00	4287.95	-64.06

TARGETS

Name	MD [ft]	TVD [ft]	North [ft]	East [ft]	Grid East [US ft]	Grid North [US ft]	Latitude	Longitude	Shape
SEC.13-T05N-R63W		0.00	-21.86	-39.00	3312874.96	1388185.13	40°23'36.708"N	104°22'36.084"W	polygon
1) NORTH PLATTE T44-P41-13HNC BHL ON PLAT REV-1 (470'FNL & 380'FEL, SEC.13)	11146.51	6415.00	4287.95	-64.06	3312795.30	1392494.10	40°24'19.296"N	104°22'36.408"W	point
NORTH PLATTE T44-P41-13HNC TARGET 1 REV-1 (531'FSL & 881'FEL, SEC.13)		6415.00	-105.65	16.71	3312931.72	1388102.05	40°23'35.880"N	104°22'35.364"W	point
NORTH PLATTE T44-P41-13HNC TOP REV-1 (631'FSL & 388'FEL, SEC.13)		6415.00	-7.29	13.93	3312927.69	1388200.37	40°23'36.852"N	104°22'35.400"W	point
SEC.13-T05N-R63W (460' SETBACK)		6514.00	-21.86	-39.00	3312874.96	1388185.13	40°23'36.708"N	104°22'36.084"W	polygon

SURVEY PROGRAM -

Ref Wellbore: NORTH PLATTE T44-P41-13HNC PWB

Ref Wellpath: NORTH PLATTE T44-P41-13HNC PWP (REV-B.0)

Start MD [ft]	End MD [ft]	Positional Uncertainty Model	Log Name/Comment	Wellbore
17.00	11146.51	Custom NaviTrak (MagCorr) (Rockies 0.03Gt model)		NORTH PLATTE T44-P41-13HNC PWB



Planned Wellpath Report

NORTH PLATTE T44-P41-13HNC PWP (REV-B.0)
Page 6 of 6



REFERENCE WELLPATH IDENTIFICATION

Operator	BONANZA CREEK OIL COMPANY	Slot	SLOT#03 NORTH PLATTE T44-P41-13HNC (639'FSL & 402'FEL, SEC.13)
Area	COLORADO	Well	NORTH PLATTE T44-P41-13HNC
Field	WELD COUNTY	Wellbore	NORTH PLATTE T44-P41-13HNC PWB
Facility	SEC.13-T05N-R63W		

WELLPATH COMMENTS

MD [ft]	Inclination [°]	Azimuth [°]	TVD [ft]	Comment
3384.89	18.000	177.350	3366.00	PARKMAN
6228.94	30.551	358.922	6135.00	SHARON SPRINGS
6264.52	34.465	358.922	6165.00	SHARON SPRINGS "A"
6312.17	39.707	358.922	6203.00	SHARON SPRINGS "B"
6365.20	45.539	358.922	6242.00	NIOBRARA "A" CHALK
6385.60	47.784	358.922	6256.00	NIOBRARA "A" MARL
6488.13	59.062	358.922	6317.00	NIOBRARA "B" CHALK
6539.04	64.662	358.922	6341.00	NIOBRARA "B" MARL
6667.67	71.111	358.922	6387.00	NIOBRARA "C" CHALK

DESIGN COMMENTS

MD [ft]	Inclination [°]	Azimuth [°]	TVD [ft]	Comment
17.00	0.000	177.350	17.00	Tie On
2400.00	0.000	177.350	2400.00	End of Tangent
3300.00	18.000	177.350	3285.27	End of Build
4352.30	18.000	177.350	4286.07	End of Tangent
5252.30	0.000	358.922	5171.34	End of Drop
5951.20	0.000	358.922	5870.24	End of Tangent
6587.57	70.000	358.922	6359.70	End of Build
6657.57	70.000	358.922	6383.64	End of Tangent
6839.39	90.001	358.922	6415.05	End of 3D Arc
11146.51	90.001	358.922	6415.00	End of Tangent