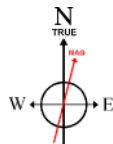


Location:	COLORADO	Slot:	SLOT#04 NORTH PLATTE T34-P31-13HC (659'FSL & 401'FEL, SEC.13)
Field:	WELD COUNTY	Well:	NORTH PLATTE T34-P31-13HC
Facility:	SEC.13-T05N-R63W	Wellbore:	NORTH PLATTE T34-P31-13HC PWB

Plot reference wellpath is NORTH PLATTE T34-P31-13HC PWP (REV-C.0)

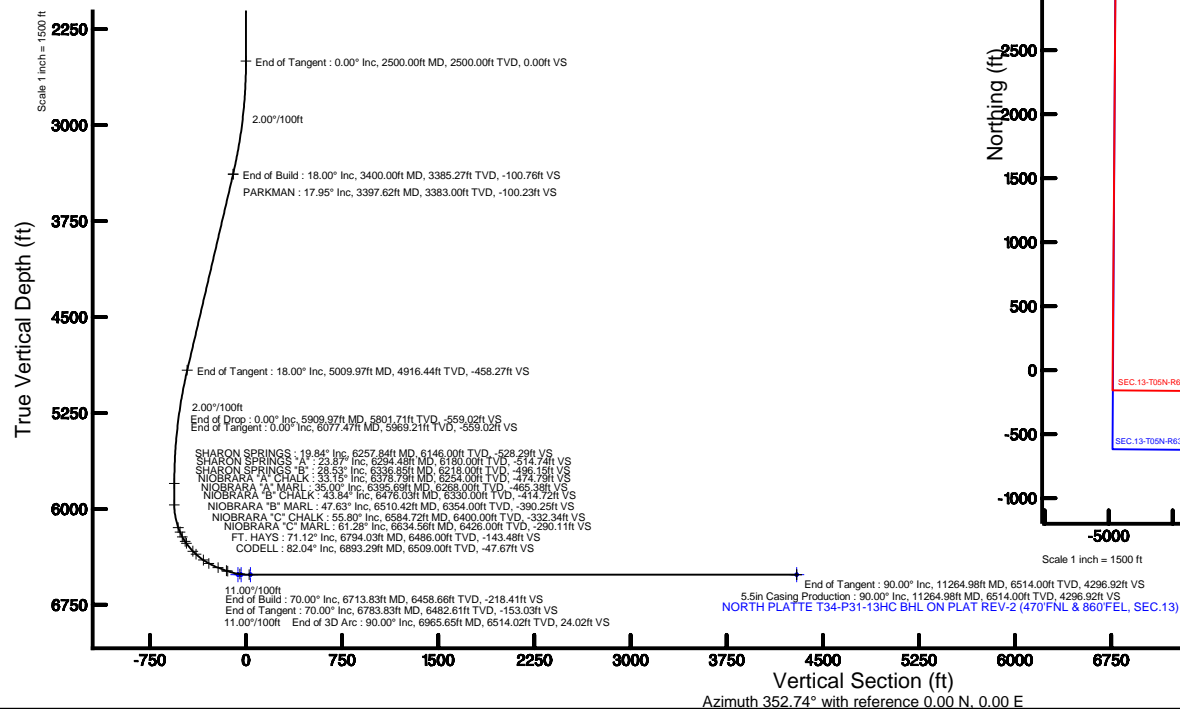
True vertical depths are referenced to XTREME 22 (17KB) (RKB)	Grid System: NAD83 / Lambert Colorado SP, Northern Zone (501), US feet
Measured depths are referenced to XTREME 22 (17KB) (RKB)	North Reference: True north
XTREME 22 (17KB) (RKB) to Mean Sea Level: 4614 feet	Scale: True distance
Mean Sea Level to Mud line (At Slot: SLO70#4 NORTH PLATTE T34-P31-13HC (659'FSL & 401'FEL, SEC.13)): 0 feet	Depths are in feet
Coordinates are in feet referenced to Slot	Created by: ingmjmr on 1/28/2016

Facility Name			Grid East (US ft)	Grid North (US ft)	Latitude	Longitude
SEC. 13-TGSN-R83W			3312874.958	1388185.127	40°23'36.708"N	104°22'36.084"W
Slot	Local N (ft)	Local E (ft)	Grid East (US ft)	Grid North (US ft)	Latitude	Longitude
SLOT#04 NORTH PLATTE T34-P31-13HC (659FSL & 401FEL, SEC. 13)	43.72	39.00	3312913.396	1388229.333	40°23'37.140"N	104°22'35.580"W
XTREME 22 (17KB) (RKB) to Mud line (At Slot: SLOT#04 NORTH PLATTE T34-P31-13HC (659FSL & 401FEL, SEC. 13))					4614ft	
Mean Sea Level to Mud line (At Slot: SLOT#04 NORTH PLATTE T34-P31-13HC (659FSL & 401FEL, SEC. 13))					0ft	
XTREME 22 (17KB) (RKB) to Mean Sea Level					4614ft	



BGM (1945.0 to 2017.0) Dip: 67.01° Field: 52609.5 nT
Magnetic North is 8.27 degrees East of True North (at 1/28/2016)

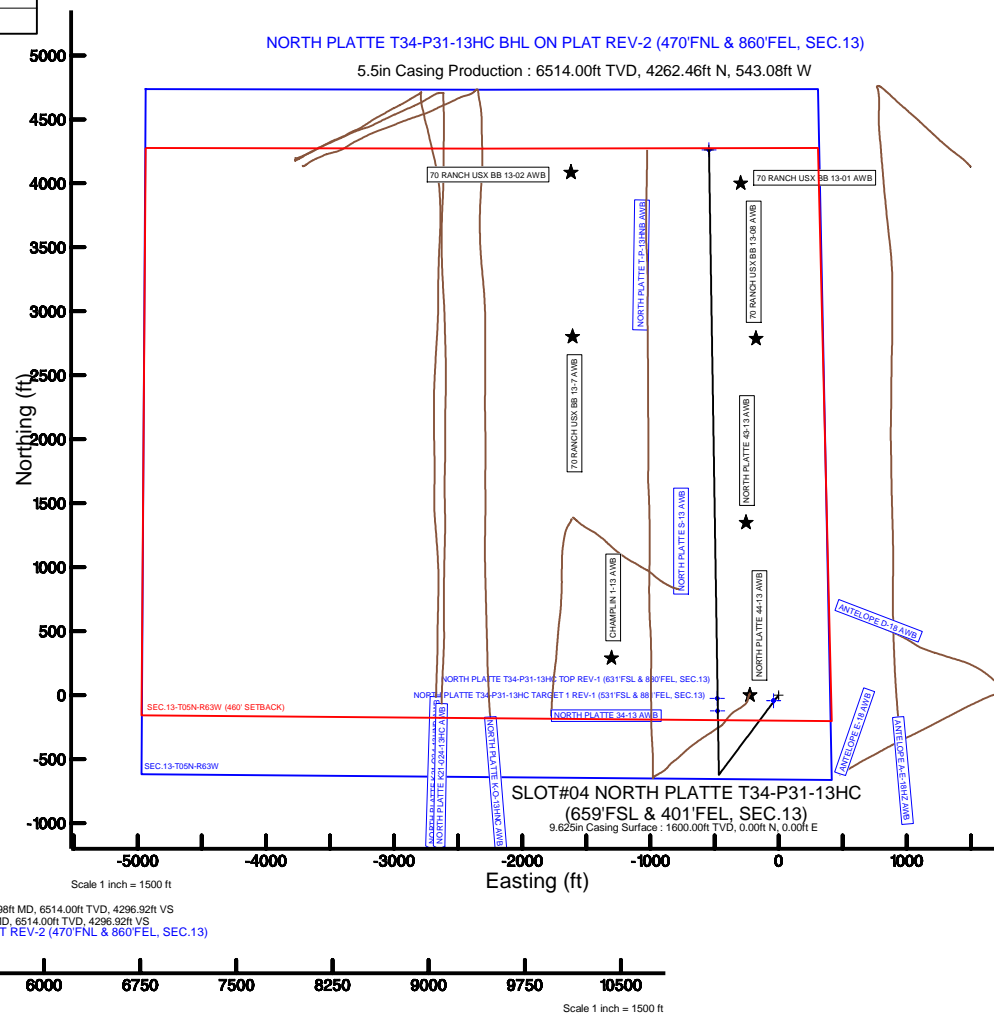
To correct azimuth from Magnetic to True add 8.27 degrees



Design Comment	MD (ft)	Inc (°)	Az (°)	TVD (ft)	Local N (ft)	Local E (ft)	DLS (°/100ft)	VS (ft)
Tie On	17.00	0.000	216.800	17.00	0.00	0.00	0.00	0.00
End of Tangent	2500.00	0.000	216.800	2500.00	0.00	0.00	0.00	0.00
End of Build	3400.00	18.000	216.800	3385.27	-112.27	-83.99	2.00	-100.76
End of Tangent	5009.97	18.000	216.800	4916.44	-510.64	-382.01	0.00	-458.27
End of Drop	5909.97	0.000	359.096	5801.71	-622.92	-466.00	2.00	-559.02
End of Tangent	6077.47	0.000	359.096	5969.21	-622.92	-466.00	0.00	-559.02
End of Build	6713.83	70.000	359.096	6458.66	-280.24	-471.41	11.00	-218.41
End of Tangent	6783.83	70.000	359.096	6482.61	-214.46	-472.44	0.00	-153.03
End of 3D Arc	6965.65	90.000	359.096	6514.02	-36.34	-475.26	11.00	24.02
End of Tangent	11264.98	90.000	359.096	6514.00	4262.46	-543.08	0.00	4296.92

Start MD (ft)	End MD (ft)	Tool	Model	Log Name/Comment	Wellbore
17.00	11264.98	NaviTrak	Custom NaviTrak (MagCorr) (Rockies 0.03Gt model)		NORTH PLATTE T34-P31-13HC PW/B

MD (ft)	Inc (°)	Az (°)	TVD (ft)	Local N (ft)	Local E (ft)	Grid East (US ft)	Grid North (US ft)	Latitude	Longitude
11264.98	90.000	359.096	6514.00	4262.46	-543.08	3312316.39	1392484.39	40°24'19.260"N	104°22'42.600"W



BONANZA CREEK OIL COMPANY

Location: COLORADO

Slot: SLOT#02 NORTH PLATTE Y44-U41-13HNB (619'FSL & 403'FEL, SEC.13)

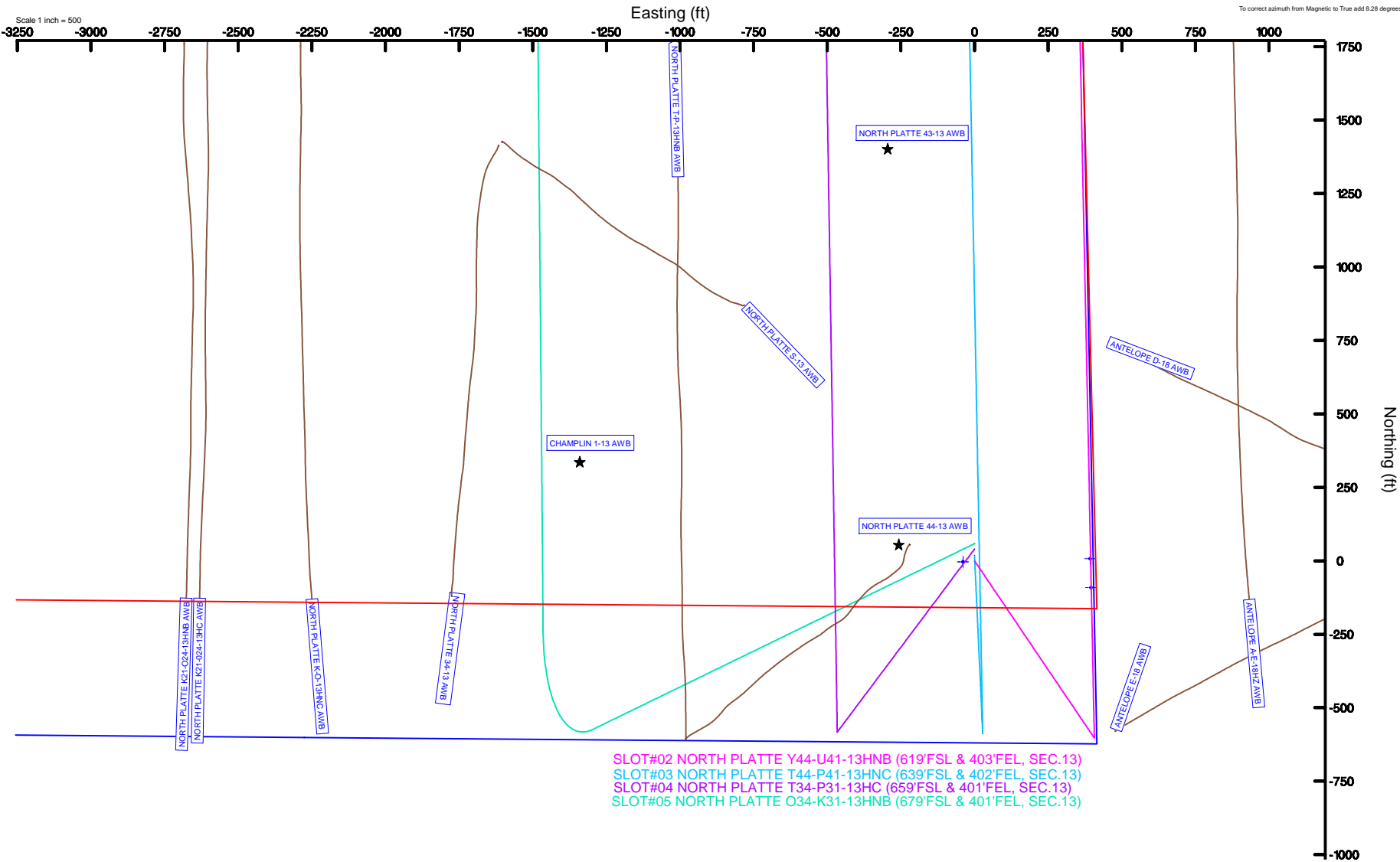
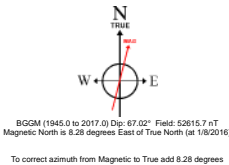
Field: WELD COUNTY

Well: NORTH PLATTE Y44-U41-13HNB

Facility: SEC.13-T05N-R63W

Wellbore: NORTH PLATTE Y44-U41-13HNB PWB

Plot reference wellpath is NORTH PLATTE Y44-U41-13HNB PWB (REV-B.0)	
True vertical depths are referenced to XTREME 22 (17'KB) (RKB)	Grid System: NAD83 / Lambert Colorado SP, Northern Zone (501), US feet
Measured depths are referenced to XTREME 22 (17'KB) (RKB)	North Reference: True north
XTREME 22 (17'KB) (RKB) to Mean Sea Level: 4614 feet	Scale: True distance
Mean Sea Level to Mud line (At Slot: SLOT#02 NORTH PLATTE Y44-U41-13HNB (619'FSL & 403'FEL, SEC.13)): 0 feet	Depths are in feet
Coordinates are in feet referenced to Slot	Created by: ingmjmr on 1/28/2016





Planned Wellpath Report

NORTH PLATTE T34-P31-13HC PWP (REV-C.0)
Page 1 of 6



REFERENCE WELLPATH IDENTIFICATION

Operator	BONANZA CREEK OIL COMPANY	Slot	SLOT#04 NORTH PLATTE T34-P31-13HC (659'FSL & 401'FEL, SEC.13)
Area	COLORADO	Well	NORTH PLATTE T34-P31-13HC
Field	WELD COUNTY	Wellbore	NORTH PLATTE T34-P31-13HC PWB
Facility	SEC.13-T05N-R63W		

REPORT SETUP INFORMATION

Projection System	NAD83 / Lambert Colorado SP, Northern Zone (501), US feet	Software System	WellArchitect® 4.1.1
North Reference	True	User	Ingmjmr
Scale	0.99996	Report Generated	1/28/2016 at 11:51:38 AM
Convergence at slot	0.73° East	Database/Source file	WA_DEN_Denver_Defn/NORTH_PLATTE_T34-P31-13HC_PWB.xml

WELLPATH LOCATION

	Local coordinates		Grid coordinates		Geographic coordinates	
	North[ft]	East[ft]	Easting[US ft]	Northing[US ft]	Latitude	Longitude
Slot Location	43.72	39.00	3312913.40	1388229.33	40°23'37.140"N	104°22'35.580"W
Facility Reference Pt			3312874.96	1388185.13	40°23'36.708"N	104°22'36.084"W
Field Reference Pt			3335925.10	1457282.25	40°34'56.460"N	104°17'26.016"W

WELLPATH DATUM

Calculation method	Minimum curvature	XTREME 22 (17'KB) (RKB) to Facility Vertical Datum	4614.00ft
Horizontal Reference Pt	Slot	XTREME 22 (17'KB) (RKB) to Mean Sea Level	4614.00ft
Vertical Reference Pt	XTREME 22 (17'KB) (RKB)	XTREME 22 (17'KB) (RKB) to Mud Line at Slot (SLOT#04 NORTH PLATTE T34-P31-13HC (659'FSL & 401'FEL, SEC.13))	4614.00ft
MD Reference Pt	XTREME 22 (17'KB) (RKB)	Section Origin	N 0.00, E 0.00 ft
Field Vertical Reference	Mean Sea Level	Section Azimuth	352.74°



Planned Wellpath Report

NORTH PLATTE T34-P31-13HC PWP (REV-C.0)

Page 2 of 6



REFERENCE WELLPATH IDENTIFICATION

Operator	BONANZA CREEK OIL COMPANY	Slot	SLOT#04 NORTH PLATTE T34-P31-13HC (659'FSL & 401'FEL, SEC.13)
Area	COLORADO	Well	NORTH PLATTE T34-P31-13HC
Field	WELD COUNTY	Wellbore	NORTH PLATTE T34-P31-13HC PWB
Facility	SEC.13-T05N-R63W		

WELLPATH DATA (135 stations) † = interpolated/extrapolated station

MD [ft]	Inclination [°]	Azimuth [°]	TVD [ft]	Vert Sect [ft]	North [ft]	East [ft]	DLS [°/100ft]	Comments
0.00†	0.000	216.800	0.00	0.00	0.00	0.00	0.00	
17.00	0.000	216.800	17.00	0.00	0.00	0.00	0.00	Tie On
117.00†	0.000	216.800	117.00	0.00	0.00	0.00	0.00	
217.00†	0.000	216.800	217.00	0.00	0.00	0.00	0.00	
317.00†	0.000	216.800	317.00	0.00	0.00	0.00	0.00	
417.00†	0.000	216.800	417.00	0.00	0.00	0.00	0.00	
517.00†	0.000	216.800	517.00	0.00	0.00	0.00	0.00	
617.00†	0.000	216.800	617.00	0.00	0.00	0.00	0.00	
717.00†	0.000	216.800	717.00	0.00	0.00	0.00	0.00	
817.00†	0.000	216.800	817.00	0.00	0.00	0.00	0.00	
917.00†	0.000	216.800	917.00	0.00	0.00	0.00	0.00	
1017.00†	0.000	216.800	1017.00	0.00	0.00	0.00	0.00	
1117.00†	0.000	216.800	1117.00	0.00	0.00	0.00	0.00	
1217.00†	0.000	216.800	1217.00	0.00	0.00	0.00	0.00	
1317.00†	0.000	216.800	1317.00	0.00	0.00	0.00	0.00	
1417.00†	0.000	216.800	1417.00	0.00	0.00	0.00	0.00	
1517.00†	0.000	216.800	1517.00	0.00	0.00	0.00	0.00	
1617.00†	0.000	216.800	1617.00	0.00	0.00	0.00	0.00	
1717.00†	0.000	216.800	1717.00	0.00	0.00	0.00	0.00	
1817.00†	0.000	216.800	1817.00	0.00	0.00	0.00	0.00	
1917.00†	0.000	216.800	1917.00	0.00	0.00	0.00	0.00	
2017.00†	0.000	216.800	2017.00	0.00	0.00	0.00	0.00	
2117.00†	0.000	216.800	2117.00	0.00	0.00	0.00	0.00	
2217.00†	0.000	216.800	2217.00	0.00	0.00	0.00	0.00	
2317.00†	0.000	216.800	2317.00	0.00	0.00	0.00	0.00	
2417.00†	0.000	216.800	2417.00	0.00	0.00	0.00	0.00	
2500.00	0.000	216.800	2500.00	0.00	0.00	0.00	0.00	End of Tangent
2517.00†	0.340	216.800	2517.00	-0.04	-0.04	-0.03	2.00	
2617.00†	2.340	216.800	2616.97	-1.72	-1.91	-1.43	2.00	
2717.00†	4.340	216.800	2716.79	-5.90	-6.58	-4.92	2.00	
2817.00†	6.340	216.800	2816.35	-12.59	-14.03	-10.50	2.00	
2917.00†	8.340	216.800	2915.53	-21.77	-24.26	-18.15	2.00	
3017.00†	10.340	216.800	3014.20	-33.43	-37.25	-27.87	2.00	
3117.00†	12.340	216.800	3112.24	-47.56	-53.00	-39.65	2.00	
3217.00†	14.340	216.800	3209.54	-64.14	-71.47	-53.47	2.00	
3317.00†	16.340	216.800	3305.97	-83.15	-92.65	-69.31	2.00	
3397.62†	17.952	216.800	3383.00	-100.23	-111.68	-83.55	2.00	PARKMAN
3400.00	18.000	216.800	3385.27	-100.76	-112.27	-83.99	2.00	End of Build
3417.00†	18.000	216.800	3401.44	-104.53	-116.48	-87.14	0.00	
3517.00†	18.000	216.800	3496.54	-126.74	-141.22	-105.65	0.00	
3617.00†	18.000	216.800	3591.65	-148.94	-165.97	-124.16	0.00	
3717.00†	18.000	216.800	3686.75	-171.15	-190.71	-142.67	0.00	
3817.00†	18.000	216.800	3781.86	-193.36	-215.46	-161.18	0.00	
3917.00†	18.000	216.800	3876.96	-215.56	-240.20	-179.69	0.00	
4017.00†	18.000	216.800	3972.07	-237.77	-264.94	-198.20	0.00	



Planned Wellpath Report

NORTH PLATTE T34-P31-13HC PWP (REV-C.0)

Page 3 of 6



REFERENCE WELLPATH IDENTIFICATION

Operator	BONANZA CREEK OIL COMPANY	Slot	SLOT#04 NORTH PLATTE T34-P31-13HC (659'FSL & 401'FEL, SEC.13)
Area	COLORADO	Well	NORTH PLATTE T34-P31-13HC
Field	WELD COUNTY	Wellbore	NORTH PLATTE T34-P31-13HC PWB
Facility	SEC.13-T05N-R63W		

WELLPATH DATA (135 stations) † = interpolated/extrapolated station

MD [ft]	Inclination [°]	Azimuth [°]	TVD [ft]	Vert Sect [ft]	North [ft]	East [ft]	DLS [°/100ft]	Comments
4117.00†	18.000	216.800	4067.18	-259.97	-289.69	-216.71	0.00	
4217.00†	18.000	216.800	4162.28	-282.18	-314.43	-235.22	0.00	
4317.00†	18.000	216.800	4257.39	-304.39	-339.17	-253.74	0.00	
4417.00†	18.000	216.800	4352.49	-326.59	-363.92	-272.25	0.00	
4517.00†	18.000	216.800	4447.60	-348.80	-388.66	-290.76	0.00	
4617.00†	18.000	216.800	4542.70	-371.00	-413.41	-309.27	0.00	
4717.00†	18.000	216.800	4637.81	-393.21	-438.15	-327.78	0.00	
4817.00†	18.000	216.800	4732.92	-415.42	-462.89	-346.29	0.00	
4917.00†	18.000	216.800	4828.02	-437.62	-487.64	-364.80	0.00	
5009.97	18.000	216.800	4916.44	-458.27	-510.64	-382.01	0.00	End of Tangent
5017.00†	17.859	216.800	4923.13	-459.82	-512.38	-383.31	2.00	
5117.00†	15.859	216.800	5018.83	-480.66	-535.60	-400.68	2.00	
5217.00†	13.859	216.800	5115.48	-499.09	-556.13	-416.04	2.00	
5317.00†	11.859	216.800	5212.96	-515.08	-573.95	-429.37	2.00	
5417.00†	9.859	216.800	5311.17	-528.62	-589.04	-440.66	2.00	
5517.00†	7.859	216.800	5409.97	-539.69	-601.37	-449.88	2.00	
5617.00†	5.859	216.800	5509.25	-548.27	-610.93	-457.03	2.00	
5717.00†	3.859	216.800	5608.89	-554.36	-617.71	-462.11	2.00	
5817.00†	1.859	216.800	5708.76	-557.94	-621.71	-465.10	2.00	
5909.97	0.000	359.096	5801.71	-559.02	-622.92	-466.00	2.00	End of Drop
5917.00†	0.000	359.096	5808.74	-559.02	-622.92	-466.00	0.00	
6017.00†	0.000	359.096	5908.74	-559.02	-622.92	-466.00	0.00	
6077.47	0.000	359.096	5969.21	-559.02	-622.92	-466.00	0.00	End of Tangent
6117.00†	4.349	359.096	6008.70	-557.53	-621.42	-466.02	11.00	
6217.00†	15.349	359.096	6107.08	-540.56	-604.34	-466.29	11.00	
6257.84†	19.841	359.096	6146.00	-528.29	-592.00	-466.49	11.00	SHARON SPRINGS
6294.48†	23.872	359.096	6180.00	-514.74	-578.36	-466.70	11.00	SHARON SPRINGS "A"
6317.00†	26.349	359.096	6200.39	-505.24	-568.81	-466.85	11.00	
6336.85†	28.532	359.096	6218.00	-496.15	-559.66	-467.00	11.00	SHARON SPRINGS "B"
6378.79†	33.145	359.096	6254.00	-474.79	-538.17	-467.34	11.00	NIOBRARA "A" CHALK
6395.69†	35.005	359.096	6268.00	-465.38	-528.70	-467.49	11.00	NIOBRARA "A" MARL
6417.00†	37.349	359.096	6285.20	-452.88	-516.13	-467.68	11.00	
6476.03†	43.842	359.096	6330.00	-414.72	-477.74	-468.29	11.00	NIOBRARA "B" CHALK
6510.42†	47.625	359.096	6354.00	-390.25	-453.12	-468.68	11.00	NIOBRARA "B" MARL
6517.00†	48.349	359.096	6358.40	-385.40	-448.23	-468.76	11.00	
6584.72†	55.798	359.096	6400.00	-332.34	-394.86	-469.60	11.00	NIOBRARA "C" CHALK
6617.00†	59.349	359.096	6417.30	-305.27	-367.62	-470.03	11.00	
6634.56†	61.280	359.096	6426.00	-290.11	-352.37	-470.27	11.00	NIOBRARA "C" MARL
6713.83	70.000	359.096	6458.66	-218.41	-280.24	-471.41	11.00	End of Build
6717.00†	70.000	359.096	6459.75	-215.45	-277.26	-471.45	0.00	
6783.83	70.000	359.096	6482.61	-153.03	-214.46	-472.44	0.00	End of Tangent
6794.03†	71.122	359.096	6486.00	-143.48	-204.85	-472.60	11.00	FT. HAYS
6817.00†	73.649	359.096	6492.95	-121.72	-182.96	-472.94	11.00	
6893.29†	82.040	359.096	6509.00	-47.67	-108.46	-474.12	11.00	CODELL
6917.00†	84.649	359.096	6511.75	-24.26	-84.91	-474.49	11.00	



Planned Wellpath Report

NORTH PLATTE T34-P31-13HC PWP (REV-C.0)
Page 4 of 6



REFERENCE WELLPATH IDENTIFICATION

Operator	BONANZA CREEK OIL COMPANY	Slot	SLOT#04 NORTH PLATTE T34-P31-13HC (659'FSL & 401'FEL, SEC.13)
Area	COLORADO	Well	NORTH PLATTE T34-P31-13HC
Field	WELD COUNTY	Wellbore	NORTH PLATTE T34-P31-13HC PWB
Facility	SEC.13-T05N-R63W		

WELLPATH DATA (135 stations) † = interpolated/extrapolated station

MD [ft]	Inclination [°]	Azimuth [°]	TVD [ft]	Vert Sect [ft]	North [ft]	East [ft]	DLS [°/100ft]	Comments
6965.65	90.000	359.096	6514.02	24.02	-36.34	-475.26	11.00	End of 3D Arc
7017.00†	90.000	359.096	6514.02	75.05	15.01	-476.07	0.00	
7117.00†	90.000	359.096	6514.02	174.44	114.99	-477.64	0.00	
7217.00†	90.000	359.096	6514.02	273.82	214.98	-479.22	0.00	
7317.00†	90.000	359.096	6514.02	373.21	314.97	-480.80	0.00	
7417.00†	90.000	359.096	6514.02	472.59	414.96	-482.38	0.00	
7517.00†	90.000	359.096	6514.02	571.98	514.94	-483.95	0.00	
7617.00†	90.000	359.096	6514.02	671.37	614.93	-485.53	0.00	
7717.00†	90.000	359.096	6514.02	770.75	714.92	-487.11	0.00	
7817.00†	90.000	359.096	6514.01	870.14	814.91	-488.69	0.00	
7917.00†	90.000	359.096	6514.01	969.52	914.89	-490.26	0.00	
8017.00†	90.000	359.096	6514.01	1068.91	1014.88	-491.84	0.00	
8117.00†	90.000	359.096	6514.01	1168.29	1114.87	-493.42	0.00	
8217.00†	90.000	359.096	6514.01	1267.68	1214.86	-494.99	0.00	
8317.00†	90.000	359.096	6514.01	1367.06	1314.84	-496.57	0.00	
8417.00†	90.000	359.096	6514.01	1466.45	1414.83	-498.15	0.00	
8517.00†	90.000	359.096	6514.01	1565.83	1514.82	-499.73	0.00	
8617.00†	90.000	359.096	6514.01	1665.22	1614.81	-501.30	0.00	
8717.00†	90.000	359.096	6514.01	1764.60	1714.79	-502.88	0.00	
8817.00†	90.000	359.096	6514.01	1863.99	1814.78	-504.46	0.00	
8917.00†	90.000	359.096	6514.01	1963.37	1914.77	-506.04	0.00	
9017.00†	90.000	359.096	6514.01	2062.76	2014.76	-507.61	0.00	
9117.00†	90.000	359.096	6514.01	2162.14	2114.74	-509.19	0.00	
9217.00†	90.000	359.096	6514.01	2261.53	2214.73	-510.77	0.00	
9317.00†	90.000	359.096	6514.01	2360.91	2314.72	-512.35	0.00	
9417.00†	90.000	359.096	6514.01	2460.30	2414.71	-513.92	0.00	
9517.00†	90.000	359.096	6514.01	2559.68	2514.70	-515.50	0.00	
9617.00†	90.000	359.096	6514.01	2659.07	2614.68	-517.08	0.00	
9717.00†	90.000	359.096	6514.01	2758.45	2714.67	-518.66	0.00	
9817.00†	90.000	359.096	6514.01	2857.84	2814.66	-520.23	0.00	
9917.00†	90.000	359.096	6514.01	2957.22	2914.65	-521.81	0.00	
10017.00†	90.000	359.096	6514.01	3056.61	3014.63	-523.39	0.00	
10117.00†	90.000	359.096	6514.00	3155.99	3114.62	-524.97	0.00	
10217.00†	90.000	359.096	6514.00	3255.38	3214.61	-526.54	0.00	
10317.00†	90.000	359.096	6514.00	3354.76	3314.60	-528.12	0.00	
10417.00†	90.000	359.096	6514.00	3454.15	3414.58	-529.70	0.00	
10517.00†	90.000	359.096	6514.00	3553.53	3514.57	-531.28	0.00	
10617.00†	90.000	359.096	6514.00	3652.92	3614.56	-532.85	0.00	
10717.00†	90.000	359.096	6514.00	3752.30	3714.55	-534.43	0.00	
10817.00†	90.000	359.096	6514.00	3851.69	3814.53	-536.01	0.00	
10917.00†	90.000	359.096	6514.00	3951.07	3914.52	-537.59	0.00	
11017.00†	90.000	359.096	6514.00	4050.46	4014.51	-539.16	0.00	
11117.00†	90.000	359.096	6514.00	4149.84	4114.50	-540.74	0.00	
11217.00†	90.000	359.096	6514.00	4249.23	4214.48	-542.32	0.00	
11264.98	90.000	359.096	6514.00 ¹	4296.92	4262.46	-543.08	0.00	End of Tangent



Planned Wellpath Report

NORTH PLATTE T34-P31-13HC PWP (REV-C.0)

Page 5 of 6



REFERENCE WELLPATH IDENTIFICATION

Operator	BONANZA CREEK OIL COMPANY	Slot	SLOT#04 NORTH PLATTE T34-P31-13HC (659'FSL & 401'FEL, SEC.13)
Area	COLORADO	Well	NORTH PLATTE T34-P31-13HC
Field	WELD COUNTY	Wellbore	NORTH PLATTE T34-P31-13HC PWB
Facility	SEC.13-T05N-R63W		

HOLE & CASING SECTIONS -

Ref Wellbore: NORTH PLATTE T34-P31-13HC PWB

Ref Wellpath: NORTH PLATTE T34-P31-13HC PWP (REV-C.0)

String/Diameter	Start MD [ft]	End MD [ft]	Interval [ft]	Start TVD [ft]	End TVD [ft]	Start N/S [ft]	Start E/W [ft]	End N/S [ft]	End E/W [ft]
13.5in Open Hole	17.00	1600.00	1583.00	17.00	1600.00	0.00	0.00	0.00	0.00
9.625in Casing Surface	17.00	1600.00	1583.00	17.00	1600.00	0.00	0.00	0.00	0.00
8.75in Open Hole	1600.00	11264.98	9664.98	1600.00	6514.00	0.00	0.00	4262.46	-543.08
5.5in Casing Production	17.00	11264.98	11247.98	17.00	6514.00	0.00	0.00	4262.46	-543.08

TARGETS

Name	MD [ft]	TVD [ft]	North [ft]	East [ft]	Grid East [US ft]	Grid North [US ft]	Latitude	Longitude	Shape
SEC.13-T05N-R63W		0.00	-43.72	-39.00	3312874.96	1388185.13	40°23'36.708"N	104°22'36.084"W	polygon
1) NORTH PLATTE T34-P31-13HC BHL ON PLAT REV-2 (470'FNL & 860'FEL, SEC.13)	11264.98	6514.00	4262.46	-543.08	3312316.39	1392484.39	40°24'19.260"N	104°22'42.600"W	point
NORTH PLATTE T34-P31-13HC TARGET 1 REV-1 (531'FSL & 881'FEL, SEC.13)		6514.00	-123.86	-476.32	3312438.70	1388099.45	40°23'35.916"N	104°22'41.736"W	point
NORTH PLATTE T34-P31-13HC TOP REV-1 (631'FSL & 880'FEL, SEC.13)		6514.00	-25.50	-479.10	3312434.67	1388197.77	40°23'36.888"N	104°22'41.772"W	point
SEC.13-T05N-R63W (460' SETBACK)		6514.00	-43.72	-39.00	3312874.96	1388185.13	40°23'36.708"N	104°22'36.084"W	polygon

SURVEY PROGRAM -

Ref Wellbore: NORTH PLATTE T34-P31-13HC PWB

Ref Wellpath: NORTH PLATTE T34-P31-13HC PWP (REV-C.0)

Start MD [ft]	End MD [ft]	Positional Uncertainty Model	Log Name/Comment	Wellbore
17.00	11264.98	Custom NaviTrak (MagCorr) (Rockies 0.03Gt model)		NORTH PLATTE T34-P31-13HC PWB



Planned Wellpath Report

NORTH PLATTE T34-P31-13HC PWP (REV-C.0)
Page 6 of 6



REFERENCE WELLPATH IDENTIFICATION

Operator	BONANZA CREEK OIL COMPANY	Slot	SLOT#04 NORTH PLATTE T34-P31-13HC (659'FSL & 401'FEL, SEC.13)
Area	COLORADO	Well	NORTH PLATTE T34-P31-13HC
Field	WELD COUNTY	Wellbore	NORTH PLATTE T34-P31-13HC PWB
Facility	SEC.13-T05N-R63W		

WELLPATH COMMENTS

MD [ft]	Inclination [°]	Azimuth [°]	TVD [ft]	Comment
3397.62	17.952	216.800	3383.00	PARKMAN
6257.84	19.841	359.096	6146.00	SHARON SPRINGS
6294.48	23.872	359.096	6180.00	SHARON SPRINGS "A"
6336.85	28.532	359.096	6218.00	SHARON SPRINGS "B"
6378.79	33.145	359.096	6254.00	NIOBRARA "A" CHALK
6395.69	35.005	359.096	6268.00	NIOBRARA "A" MARL
6476.03	43.842	359.096	6330.00	NIOBRARA "B" CHALK
6510.42	47.625	359.096	6354.00	NIOBRARA "B" MARL
6584.72	55.798	359.096	6400.00	NIOBRARA "C" CHALK
6634.56	61.280	359.096	6426.00	NIOBRARA "C" MARL
6794.03	71.122	359.096	6486.00	FT. HAYS
6893.29	82.040	359.096	6509.00	CODELL

DESIGN COMMENTS

MD [ft]	Inclination [°]	Azimuth [°]	TVD [ft]	Comment
17.00	0.000	216.800	17.00	Tie On
2500.00	0.000	216.800	2500.00	End of Tangent
3400.00	18.000	216.800	3385.27	End of Build
5009.97	18.000	216.800	4916.44	End of Tangent
5909.97	0.000	359.096	5801.71	End of Drop
6077.47	0.000	359.096	5969.21	End of Tangent
6713.83	70.000	359.096	6458.66	End of Build
6783.83	70.000	359.096	6482.61	End of Tangent
6965.65	90.000	359.096	6514.02	End of 3D Arc
11264.98	90.000	359.096	6514.00	End of Tangent