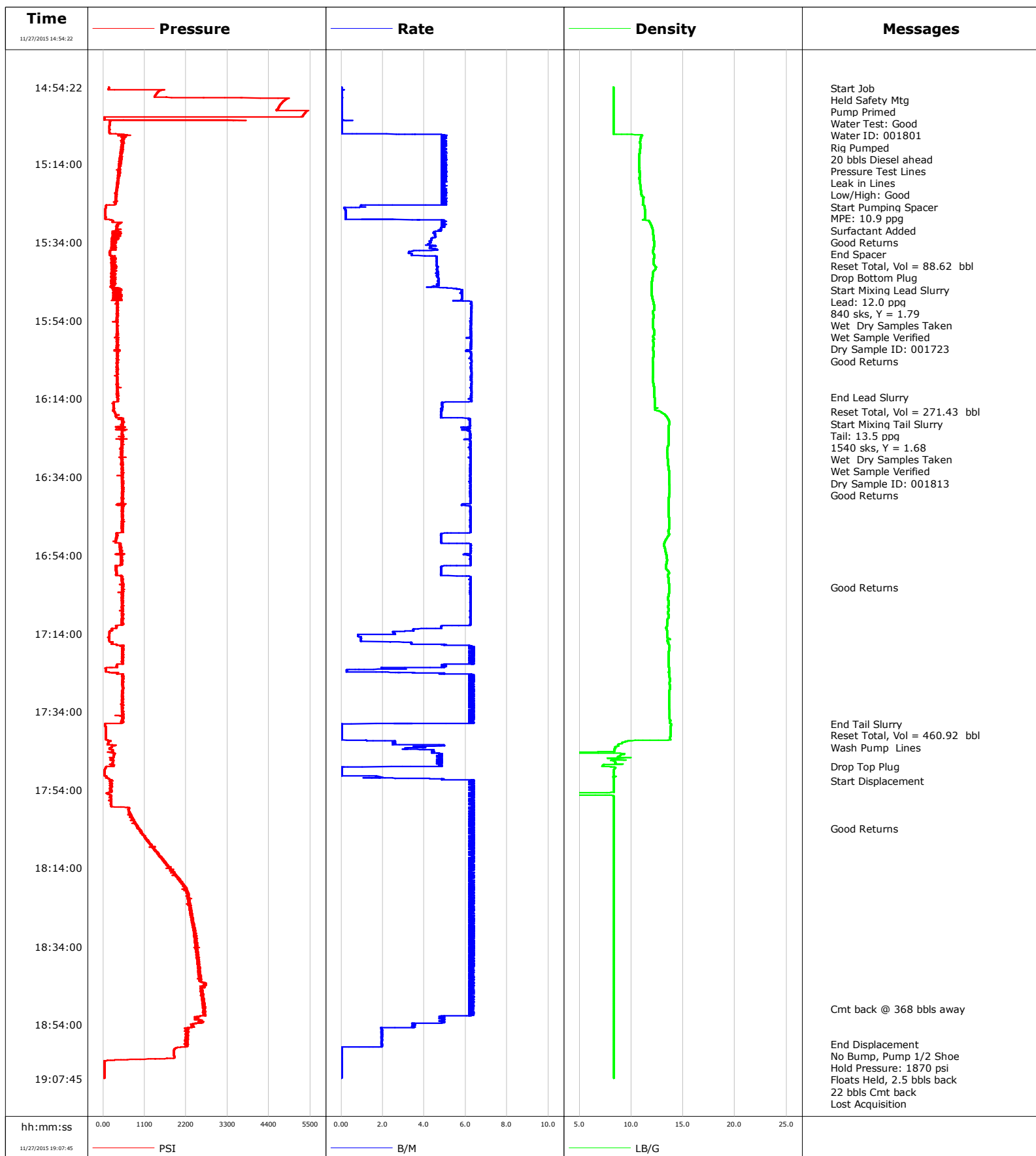


**Well** Wilson Ranch 34N-27HZ  
**Field** Wattenberg  
**Engineer** Matlock/Terry  
**Country** United States

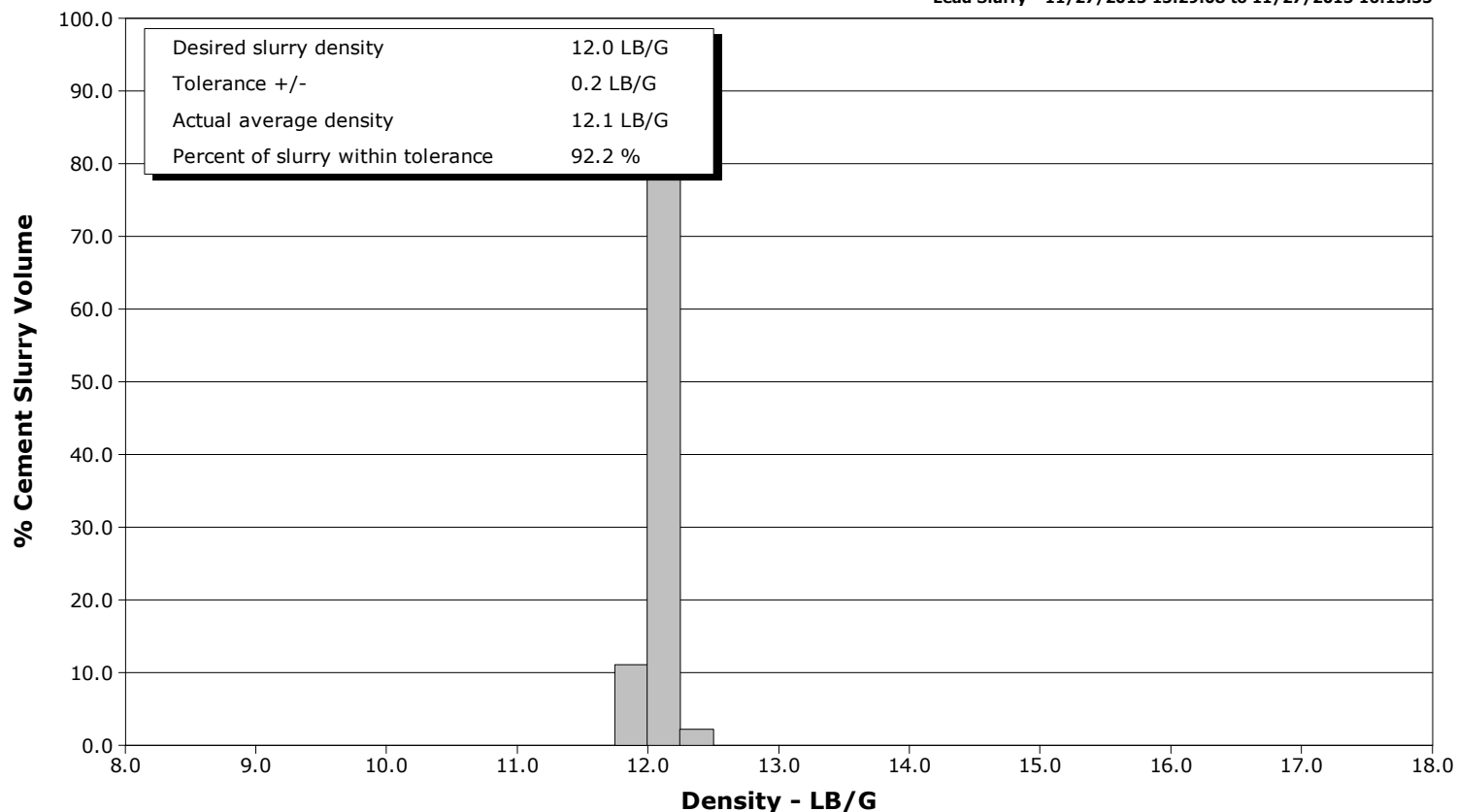
**Client** Anadarko  
**SIR No.** CYUT-00129  
**Job Type** Production  
**Job Date** 11-27-2015



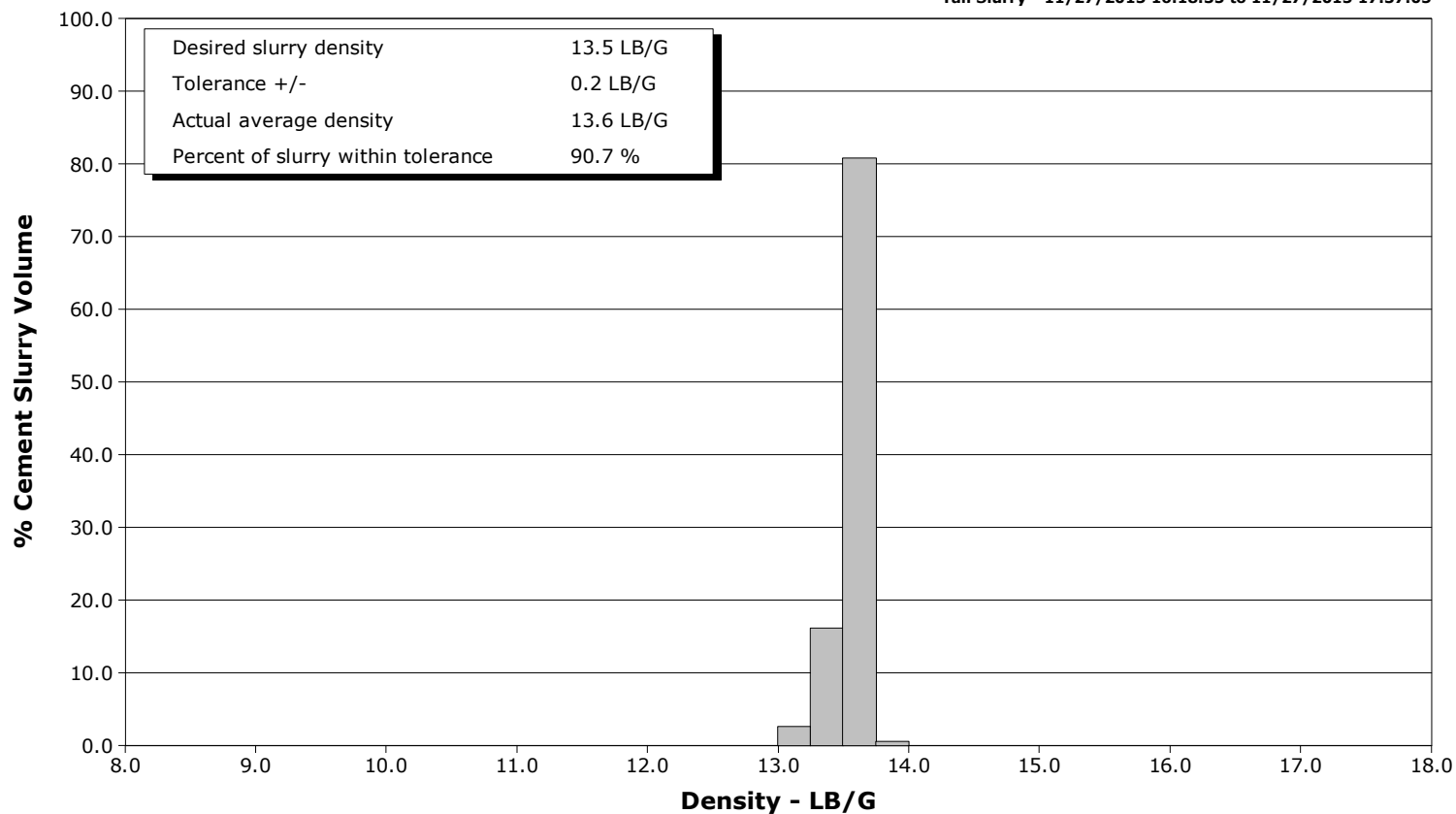
**Well** Wilson Ranch 34N-27HZ  
**Field** Wattenberg  
**Engineer** Matlock/Terry  
**Country** United States

**Client** Anadarko  
**SIR No.** CYUT-00129  
**Job Type** Production  
**Job Date** 11-27-2015

**Lead Slurry - 11/27/2015 15:29:08 to 11/27/2015 16:13:35**



**Tail Slurry - 11/27/2015 16:18:35 to 11/27/2015 17:37:05**



# Cementing Service Report

					Customer Anadarko			Job Number CYUT-00129							
Well Wilson Ranch 34N-27HZ				Location (legal)			Schlumberger Location Cheyenne			Job Start Nov/27/2015					
Field Wattenberg		Formation Name/Type			Deviation deg		Bit Size 8.5 in		Well MD 16778.0 ft		Well TVD 7272.0 ft				
County Weld		State/Province CO			BHP psi		BHST 234 degF		BHCT 233 degF		Pore Press. Gradient lb/gal				
Well Master 0631620732		API/UWI 05123410650000													
Rig Name Precision 460		Drilled For N/A		Service Via Land		Casing/ Liner									
						Depth, ft		Size, in		Weight, lb/ft		Grade	Thread		
Offshore Zone		Well Class New		Well Type Development		16778.0		5.5		17.0		P-110			
						0.0		0.0		0.0					
Drilling Fluid Type		Max. Density lb/gal		Plastic Viscosity cP		Tubing/Drill Pipe									
						T/D		Depth, ft		Size, in		Weight, lb/ft		Grade	Thread
Service Line Cementing		Job Type Production													
Max. Allowed Tub. Press psi		Max. Allowed Ann. Press psi		WH Connection Double Cement head		Perforations/Open Hole									
						Top, ft		Bottom, ft		shot/ft		No. of Shots		Total Interval ft	
						ft		ft							
						ft		ft						Diameter in	
						Treat Down Casing		Displacement 388.0 bbl		Packer Type		Packer Depth ft			
						Tubing Vol. bbl		Casing Vol. bbl		Annular Vol. bbl		Openhole Vol. bbl			
Casing/Tubing Secured <input checked="" type="checkbox"/>		1 Hole Vol. Circulated prior to Cement <input checked="" type="checkbox"/>				Casing Tools				Squeeze Job					
Lift Pressure psi						Shoe Type Float				Squeeze Type					
Pipe Rotated <input type="checkbox"/>		Pipe Reciprocated <input type="checkbox"/>				Shoe Depth 16778.0 ft				Tool Type					
No. Centralizers		Top Plugs 1		Bottom Plugs 1		Stage Tool Type				Tool Depth ft					
Cement Head Type Double						Stage Tool Depth ft				Tail Pipe Size in					
Job Scheduled For Nov/27/2015 08:30		Arrived on Location Nov/27/2015 08:30		Leave Location Nov/27/2015 20:30		Collar Type Float				Tail Pipe Depth ft					
						Collar Depth 16692.0 ft				Sqz. Total Vol. bbl					
Date	Time 24-hr clock	Treating Pressure PSI	Flow Rate B/M	Density LB/G	Volume BBL	Solid Fraction NULL	Message								
11/27/2015	14:54:22	156	0.0	8.29	2.2	0	Started Acquisition								
11/27/2015	14:54:35	149	0.0	8.29	2.2	0	Start Job								
11/27/2015	14:54:37	148	0.0	8.29	2.2	0	Held Safety Mtg								
11/27/2015	14:54:38	148	0.0	8.28	2.2	0	Water Test: Good								
11/27/2015	14:54:39	147	0.0	8.28	2.2	0	Rig Pumped								
11/27/2015	14:54:40	147	0.0	8.28	2.2	0	20 bbls Diesel ahead								
11/27/2015	14:55:12	1528	0.0	8.29	2.2	0									
11/27/2015	14:56:02	1419	0.0	8.29	2.2	0									
11/27/2015	14:56:45	1369	0.0	8.29	2.2	0	Pressure Test Lines								
11/27/2015	14:56:52	1361	0.0	8.29	2.2	0									
11/27/2015	14:57:20	4881	0.0	8.29	2.2	0	Leak in Lines								
11/27/2015	14:57:42	4822	0.0	8.29	2.2	0									
11/27/2015	14:58:32	4729	0.0	8.29	2.2	0									
11/27/2015	14:59:22	4668	0.0	8.29	2.2	0									
11/27/2015	15:00:12	4601	0.0	8.29	2.2	0									
11/27/2015	15:01:02	5354	0.0	8.29	2.2	0									
11/27/2015	15:01:52	5291	0.0	8.29	2.2	0									
11/27/2015	15:02:13	31	0.0	8.29	2.2	0	Low/High: Good								
11/27/2015	15:02:42	27	0.0	8.29	0.0	0									
11/27/2015	15:03:32	174	0.0	8.29	0.0	0									
11/27/2015	15:04:22	170	0.0	8.29	0.0	0									

Well			Field		Job Start		Customer		Job Number	
Wilson Ranch 34N-27HZ			Wattenberg		Nov/27/2015		Anadarko		CYUT-00129	
Date	Time 24-hr clock	Treating Pressure PSI	Flow Rate B/M	Density LB/G	Volume BBL	Solid Fraction NULL	Message			
11/27/2015	15:06:02	171	0.0	8.29	0.0	0				
11/27/2015	15:06:30	556	4.8	10.06	0.5	18	Start Pumping Spacer			
11/27/2015	15:06:52	400	5.0	11.01	2.3	17				
11/27/2015	15:07:42	516	5.0	10.87	6.4	17				
11/27/2015	15:08:11	534	5.1	10.85	8.8	18	MPE: 10.9 ppg			
11/27/2015	15:08:12	540	4.8	10.85	8.9	18	Surfactant Added			
11/27/2015	15:08:32	508	4.8	10.83	10.6	19				
11/27/2015	15:09:22	514	5.1	10.87	14.7	20				
11/27/2015	15:10:12	472	5.0	10.84	18.8	21				
11/27/2015	15:11:02	462	4.8	10.83	22.9	22				
11/27/2015	15:11:52	457	4.8	10.74	27.0	22				
11/27/2015	15:12:42	452	5.0	10.76	31.1	22				
11/27/2015	15:13:32	458	4.8	10.75	35.2	22				
11/27/2015	15:14:22	419	4.8	10.78	39.3	22				
11/27/2015	15:15:12	423	5.1	10.79	43.5	22				
11/27/2015	15:16:02	437	5.0	10.78	47.6	22				
11/27/2015	15:16:52	397	4.8	10.81	51.7	22				
11/27/2015	15:17:42	405	4.8	10.79	55.8	22				
11/27/2015	15:18:32	396	5.0	10.81	59.9	22				
11/27/2015	15:19:22	374	4.8	10.86	64.0	22				
11/27/2015	15:20:12	370	4.8	10.91	68.1	22				
11/27/2015	15:21:02	367	5.0	10.95	72.2	22				
11/27/2015	15:21:52	337	4.8	10.98	76.4	22				
11/27/2015	15:22:25	353	5.0	11.14	79.1	22	Good Returns			
11/27/2015	15:22:42	326	5.0	11.18	80.5	22				
11/27/2015	15:23:32	332	4.8	11.13	84.6	21				
11/27/2015	15:24:22	319	5.0	11.13	88.7	16				
11/27/2015	15:25:12	68	0.2	11.29	0.1	0				
11/27/2015	15:25:35	65	0.2	11.31	0.1	0	End Spacer			
11/27/2015	15:26:02	62	0.2	11.33	0.2	0				
11/27/2015	15:26:52	58	0.2	11.35	0.4	0				
11/27/2015	15:27:42	66	0.2	11.34	0.6	0				
11/27/2015	15:27:54	65	0.2	11.34	0.6	0	Reset Total, Vol = 88.62 bbl			
11/27/2015	15:28:04	65	0.2	11.33	0.6	0	Drop Bottom Plug			
11/27/2015	15:28:32	264	5.0	11.70	2.1	15				
11/27/2015	15:29:08	462	5.0	11.84	5.1	14	Start Mixing Lead Slurry			
11/27/2015	15:29:21	387	5.0	11.86	6.1	14	Lead: 12.0 ppg			
11/27/2015	15:29:22	384	5.0	11.86	6.2	14	840 sks, Y = 1.79			
11/27/2015	15:29:23	390	4.8	11.87	6.3	14	Wet Dry Samples Taken			
11/27/2015	15:29:24	390	5.0	11.87	6.4	14	Wet Sample Verified			
11/27/2015	15:29:25	367	5.0	11.87	6.4	14	Dry Sample ID: 001723			
11/27/2015	15:29:26	361	5.1	11.88	6.5	14	Good Returns			
11/27/2015	15:30:12	369	5.0	11.99	10.3	15				
11/27/2015	15:31:02	354	4.7	12.07	14.3	17				
11/27/2015	15:31:52	242	4.5	12.11	18.1	18				
11/27/2015	15:32:42	284	4.5	12.15	21.9	19				
11/27/2015	15:33:32	232	4.3	12.17	25.5	19				
11/27/2015	15:34:22	332	4.2	12.19	29.1	20				
11/27/2015	15:35:12	212	4.3	12.18	32.7	19				
11/27/2015	15:36:02	232	4.6	12.09	36.4	19				
11/27/2015	15:36:52	184	3.3	12.12	39.3	16				
11/27/2015	15:37:42	220	4.6	12.19	42.4	14				
11/27/2015	15:38:32	259	4.6	12.16	46.2	12				
11/27/2015	15:39:22	246	4.6	12.14	50.0	11				

Well			Field		Job Start		Customer		Job Number	
Wilson Ranch 34N-27HZ			Wattenberg		Nov/27/2015		Anadarko		CYUT-00129	
Date	Time 24-hr clock	Treating Pressure PSI	Flow Rate B/M	Density LB/G	Volume BBL	Solid Fraction NULL	Message			
11/27/2015	15:41:02	245	4.6	12.30	57.7	17				
11/27/2015	15:41:52	294	4.6	12.09	61.6	17				
11/27/2015	15:42:42	279	4.6	12.05	65.4	17				
11/27/2015	15:43:32	345	4.7	12.02	69.3	17				
11/27/2015	15:44:22	292	4.7	11.97	73.2	24				
11/27/2015	15:45:12	297	4.6	11.96	77.1	27				
11/27/2015	15:46:02	479	5.7	11.96	81.2	28				
11/27/2015	15:46:52	379	5.8	11.95	86.1	29				
11/27/2015	15:47:42	268	5.8	11.98	90.9	32				
11/27/2015	15:48:32	259	5.8	12.04	95.8	33				
11/27/2015	15:49:22	407	6.3	12.14	100.7	33				
11/27/2015	15:50:12	381	6.3	12.19	105.9	32				
11/27/2015	15:51:02	373	6.3	12.20	111.1	32				
11/27/2015	15:51:52	394	6.3	12.08	116.4	32				
11/27/2015	15:52:42	369	6.3	12.14	121.6	32				
11/27/2015	15:53:32	382	6.3	12.13	126.8	31				
11/27/2015	15:54:22	259	6.3	12.10	132.0	31				
11/27/2015	15:55:12	356	6.2	12.12	137.2	30				
11/27/2015	15:56:02	379	6.2	12.12	142.4	29				
11/27/2015	15:56:52	383	6.3	12.20	147.6	28				
11/27/2015	15:57:42	375	6.3	12.18	152.8	26				
11/27/2015	15:58:32	385	6.2	12.15	158.0	24				
11/27/2015	15:59:22	364	6.3	12.10	163.2	22				
11/27/2015	16:00:12	364	6.3	12.15	168.4	21				
11/27/2015	16:01:02	385	6.2	12.10	173.6	20				
11/27/2015	16:01:52	321	6.0	12.13	178.8	20				
11/27/2015	16:02:42	363	6.3	12.15	184.0	20				
11/27/2015	16:03:32	375	6.3	12.10	189.2	20				
11/27/2015	16:04:22	368	6.3	12.07	194.4	20				
11/27/2015	16:05:12	374	6.3	12.10	199.6	21				
11/27/2015	16:06:02	368	6.3	12.12	204.8	22				
11/27/2015	16:06:52	391	6.3	12.12	210.0	23				
11/27/2015	16:07:42	364	6.3	12.10	215.3	24				
11/27/2015	16:08:32	364	6.3	12.08	220.5	25				
11/27/2015	16:09:22	378	6.3	12.08	225.7	25				
11/27/2015	16:10:12	392	6.3	12.14	230.9	25				
11/27/2015	16:11:02	356	6.3	12.18	236.2	25				
11/27/2015	16:11:52	388	6.3	12.19	241.4	24				
11/27/2015	16:12:42	367	6.3	12.19	246.6	24				
11/27/2015	16:13:32	389	6.3	12.22	251.8	23				
11/27/2015	16:13:35	393	6.3	12.22	252.1	23	End Lead Slurry			
11/27/2015	16:14:22	389	6.3	12.24	257.0	23				
11/27/2015	16:15:12	284	4.9	12.25	261.8	21				
11/27/2015	16:16:02	281	4.9	12.26	265.8	20				
11/27/2015	16:16:52	267	4.8	12.30	269.9	16				
11/27/2015	16:17:19	286	4.8	12.82	272.0	15	Reset Total, Vol = 271.43 bbl			
11/27/2015	16:17:42	316	4.8	12.98	0.2	15				
11/27/2015	16:18:32	350	4.8	13.38	4.2	14				
11/27/2015	16:18:35	351	4.8	13.39	4.4	14	Start Mixing Tail Slurry			
11/27/2015	16:18:59	530	6.0	13.49	6.4	13	Tail: 13.5 ppg			
11/27/2015	16:19:01	488	6.2	13.50	6.6	13	1540 sks, Y = 1.68			
11/27/2015	16:19:02	505	6.2	13.50	6.7	13	Wet Dry Samples Taken			
11/27/2015	16:19:03	430	6.1	13.51	6.8	13	Wet Sample Verified			
11/27/2015	16:19:04	430	6.1	13.51	6.9	13	Dry Sample ID: 001813			

Well Wilson Ranch 34N-27HZ			Field Wattenberg		Job Start Nov/27/2015	Customer Anadarko		Job Number CYUT-00129
Date	Time 24-hr clock	Treating Pressure PSI	Flow Rate B/M	Density LB/G	Volume BBL	Solid Fraction NULL	Message	
11/27/2015	16:19:22	516	6.1	13.58	8.8	13		
11/27/2015	16:20:12	506	6.2	13.67	13.9	15		
11/27/2015	16:21:02	508	6.2	13.61	19.1	19		
11/27/2015	16:21:52	378	5.9	13.60	24.2	23		
11/27/2015	16:22:42	526	6.2	13.60	29.3	26		
11/27/2015	16:23:32	492	6.2	13.59	34.4	28		
11/27/2015	16:24:22	535	6.0	13.59	39.6	30		
11/27/2015	16:25:12	502	6.2	13.59	44.8	32		
11/27/2015	16:26:02	501	6.2	13.56	50.0	33		
11/27/2015	16:26:52	484	6.2	13.48	55.1	32		
11/27/2015	16:27:42	491	6.2	13.46	60.3	31		
11/27/2015	16:28:32	511	6.2	13.49	65.5	30		
11/27/2015	16:29:22	500	6.2	13.51	70.7	29		
11/27/2015	16:30:12	489	6.2	13.54	75.9	29		
11/27/2015	16:31:02	525	6.2	13.56	81.1	28		
11/27/2015	16:31:52	522	6.2	13.60	86.3	28		
11/27/2015	16:32:42	507	6.2	13.62	91.5	29		
11/27/2015	16:33:32	508	6.2	13.62	96.7	29		
11/27/2015	16:34:22	509	6.2	13.63	101.8	30		
11/27/2015	16:35:12	518	6.2	13.62	107.0	31		
11/27/2015	16:36:02	520	6.2	13.66	112.2	32		
11/27/2015	16:36:52	536	6.2	13.68	117.4	33		
11/27/2015	16:37:42	553	6.2	13.69	122.6	33		
11/27/2015	16:38:32	495	6.2	13.65	127.8	34		
11/27/2015	16:39:22	484	6.2	13.61	133.0	34		
11/27/2015	16:40:12	514	6.2	13.60	138.1	34		
11/27/2015	16:41:02	467	5.8	13.59	143.3	34		
11/27/2015	16:41:52	509	6.2	13.59	148.3	34		
11/27/2015	16:42:42	498	6.2	13.60	153.5	34		
11/27/2015	16:43:32	493	6.2	13.60	158.7	34		
11/27/2015	16:44:22	521	6.2	13.61	163.9	34		
11/27/2015	16:45:12	518	6.2	13.63	169.1	34		
11/27/2015	16:46:02	502	6.2	13.62	174.3	34		
11/27/2015	16:46:52	528	6.2	13.63	179.5	35		
11/27/2015	16:47:42	496	6.2	13.59	184.7	36		
11/27/2015	16:48:32	360	4.8	13.62	189.6	40		
11/27/2015	16:49:22	367	4.8	13.49	193.6	41		
11/27/2015	16:50:12	337	4.8	13.32	197.6	37		
11/27/2015	16:51:02	443	6.0	13.18	201.7	34		
11/27/2015	16:51:52	476	6.2	13.19	206.9	32		
11/27/2015	16:52:42	475	6.3	13.26	212.1	33		
11/27/2015	16:53:32	455	6.2	13.35	217.3	34		
11/27/2015	16:54:22	484	6.2	13.40	222.4	36		
11/27/2015	16:55:12	473	6.2	13.43	227.6	37		
11/27/2015	16:56:02	474	6.2	13.38	232.8	39		
11/27/2015	16:56:52	358	4.8	13.35	237.7	40		
11/27/2015	16:57:42	325	4.8	13.41	241.8	41		
11/27/2015	16:58:32	348	4.8	13.63	245.8	40		
11/27/2015	16:59:22	449	6.1	13.54	249.9	39		
11/27/2015	17:00:12	484	6.2	13.59	255.1	37		
11/27/2015	17:01:02	500	6.2	13.60	260.2	36		
11/27/2015	17:01:52	504	6.2	13.63	265.4	36		
11/27/2015	17:02:10	506	6.2	13.63	267.3	36	Good Returns	
11/27/2015	17:02:42	506	6.2	13.63	270.6	36		

Well Wilson Ranch 34N-27HZ			Field Wattenberg		Job Start Nov/27/2015	Customer Anadarko		Job Number CYUT-00129
Date	Time 24-hr clock	Treating Pressure PSI	Flow Rate B/M	Density LB/G	Volume BBL	Solid Fraction NULL	Message	
11/27/2015	17:04:22	491	6.2	13.59	281.0	36		
11/27/2015	17:05:12	508	6.2	13.55	286.2	36		
11/27/2015	17:06:02	526	6.2	13.58	291.4	36		
11/27/2015	17:06:52	500	6.2	13.58	296.6	36		
11/27/2015	17:07:42	493	6.2	13.57	301.8	36		
11/27/2015	17:08:32	511	6.2	13.56	307.0	36		
11/27/2015	17:09:22	500	6.2	13.58	312.1	37		
11/27/2015	17:10:12	525	6.2	13.55	317.3	37		
11/27/2015	17:11:02	517	6.2	13.47	322.5	37		
11/27/2015	17:11:52	486	6.2	13.45	327.7	37		
11/27/2015	17:12:42	353	4.8	13.37	331.9	37		
11/27/2015	17:13:32	169	2.6	13.42	334.9	38		
11/27/2015	17:14:22	163	0.8	13.43	337.0	40		
11/27/2015	17:15:12	160	0.9	13.46	337.7	43		
11/27/2015	17:16:02	163	0.9	13.49	338.5	43		
11/27/2015	17:16:52	355	5.1	13.61	341.1	38		
11/27/2015	17:17:42	510	6.4	13.66	346.1	31		
11/27/2015	17:18:32	510	6.2	13.62	351.3	26		
11/27/2015	17:19:22	514	6.4	13.61	356.6	24		
11/27/2015	17:20:12	514	6.2	13.61	361.8	24		
11/27/2015	17:21:02	503	6.3	13.61	367.0	25		
11/27/2015	17:21:52	424	6.4	13.60	372.3	26		
11/27/2015	17:22:42	373	5.0	13.63	376.4	27		
11/27/2015	17:23:32	69	0.3	13.63	377.7	0		
11/27/2015	17:24:22	379	5.0	13.63	379.6	28		
11/27/2015	17:25:12	521	6.4	13.69	384.8	35		
11/27/2015	17:26:02	524	6.3	13.73	390.1	39		
11/27/2015	17:26:52	521	6.3	13.70	395.3	40		
11/27/2015	17:27:42	529	6.3	13.72	400.5	40		
11/27/2015	17:28:32	545	6.3	13.66	405.8	39		
11/27/2015	17:29:22	495	6.4	13.64	411.0	38		
11/27/2015	17:30:12	491	6.3	13.63	416.2	36		
11/27/2015	17:31:02	514	6.3	13.64	421.5	35		
11/27/2015	17:31:52	507	6.4	13.63	426.7	34		
11/27/2015	17:32:42	495	6.3	13.64	431.9	34		
11/27/2015	17:33:32	505	6.4	13.67	437.2	33		
11/27/2015	17:34:22	504	6.2	13.69	442.4	34		
11/27/2015	17:35:12	531	6.4	13.70	447.7	37		
11/27/2015	17:36:02	524	6.3	13.74	452.9	45		
11/27/2015	17:36:52	481	6.3	13.74	458.1	50		
11/27/2015	17:37:05	55	1.7	13.82	459.2	0	End Tail Slurry	
11/27/2015	17:37:07	52	0.1	13.82	459.3	0	Reset Total, Vol = 460.92 bbl	
11/27/2015	17:37:42	43	0.0	13.80	459.3	0		
11/27/2015	17:38:32	73	0.0	13.80	459.3	0		
11/27/2015	17:39:22	72	0.0	13.79	459.3	0		
11/27/2015	17:40:12	70	0.0	13.79	459.3	0		
11/27/2015	17:41:00	70	0.0	13.75	459.3	0	Wash Pump Lines	
11/27/2015	17:41:02	70	0.0	13.75	459.3	0		
11/27/2015	17:41:52	140	2.5	9.22	1.2	53		
11/27/2015	17:42:42	305	5.0	8.77	3.8	53		
11/27/2015	17:43:32	167	3.2	8.40	7.0	53		
11/27/2015	17:44:22	121	4.4	2.37	10.5	33		
11/27/2015	17:45:12	285	4.7	8.94	14.4	29		
11/27/2015	17:46:02	251	4.7	8.06	18.4	29		

Well			Field		Job Start		Customer		Job Number	
Wilson Ranch 34N-27HZ			Wattenberg		Nov/27/2015		Anadarko		CYUT-00129	
Date	Time 24-hr clock	Treating Pressure PSI	Flow Rate B/M	Density LB/G	Volume BBL	Solid Fraction NULL	Message			
11/27/2015	17:47:42	256	4.8	7.37	26.3	0				
11/27/2015	17:48:00	295	4.8	7.17	27.8	0	Drop Top Plug			
11/27/2015	17:48:32	60	0.0	8.42	28.1	0				
11/27/2015	17:49:22	38	0.0	8.32	0.0	0				
11/27/2015	17:50:12	37	0.0	8.32	0.0	0				
11/27/2015	17:51:02	126	2.6	8.33	1.1	0				
11/27/2015	17:51:34	182	6.4	8.33	3.7	0	Start Displacement			
11/27/2015	17:51:52	219	6.2	8.32	5.6	0				
11/27/2015	17:52:42	217	6.3	8.32	10.9	0				
11/27/2015	17:53:32	213	6.3	8.32	16.2	0				
11/27/2015	17:54:22	213	6.3	8.32	21.4	0				
11/27/2015	17:55:12	189	6.4	-0.04	26.7	0				
11/27/2015	17:56:02	174	6.4	8.31	31.9	0				
11/27/2015	17:56:52	212	6.2	8.32	37.2	0				
11/27/2015	17:57:42	211	6.3	8.31	42.4	0				
11/27/2015	17:58:32	656	6.4	8.31	47.7	0				
11/27/2015	17:59:22	673	6.2	8.31	53.0	0				
11/27/2015	18:00:12	739	6.4	8.31	58.2	0				
11/27/2015	18:01:02	702	6.3	8.31	63.5	0				
11/27/2015	18:01:52	819	6.3	8.31	68.7	0				
11/27/2015	18:02:42	845	6.3	8.31	74.0	0				
11/27/2015	18:03:32	925	6.3	8.31	79.2	0				
11/27/2015	18:04:00	940	6.3	8.31	82.2	0	Good Returns			
11/27/2015	18:04:22	978	6.3	8.31	84.5	0				
11/27/2015	18:05:12	1040	6.3	8.31	89.7	0				
11/27/2015	18:06:02	1095	6.3	8.31	95.0	0				
11/27/2015	18:06:52	1156	6.3	8.31	100.3	0				
11/27/2015	18:07:42	1255	6.3	8.31	105.5	0				
11/27/2015	18:08:32	1302	6.4	8.32	110.8	0				
11/27/2015	18:09:22	1353	6.3	8.32	116.0	0				
11/27/2015	18:10:12	1478	6.3	8.32	121.3	0				
11/27/2015	18:11:02	1483	6.4	8.32	126.5	0				
11/27/2015	18:11:52	1594	6.3	8.32	131.8	0				
11/27/2015	18:12:42	1684	6.4	8.32	137.0	0				
11/27/2015	18:13:32	1716	6.2	8.32	142.2	0				
11/27/2015	18:14:22	1784	6.3	8.32	147.4	0				
11/27/2015	18:15:12	1881	6.4	8.32	152.7	0				
11/27/2015	18:16:02	1912	6.3	8.32	157.9	0				
11/27/2015	18:16:52	2026	6.3	8.32	163.1	0				
11/27/2015	18:17:42	2065	6.3	8.32	168.3	0				
11/27/2015	18:18:32	2164	6.3	8.32	173.5	0				
11/27/2015	18:19:22	2181	6.2	8.32	178.7	0				
11/27/2015	18:20:12	2257	6.3	8.32	184.0	0				
11/27/2015	18:21:02	2276	6.4	8.32	189.2	0				
11/27/2015	18:21:52	2240	6.3	8.32	194.4	0				
11/27/2015	18:22:42	2302	6.2	8.32	199.6	0				
11/27/2015	18:23:32	2271	6.2	8.32	204.9	0				
11/27/2015	18:24:22	2346	6.3	8.32	210.1	0				
11/27/2015	18:25:12	2345	6.3	8.32	215.3	0				
11/27/2015	18:26:02	2313	6.2	8.32	220.5	0				
11/27/2015	18:26:52	2375	6.4	8.32	225.7	0				
11/27/2015	18:27:42	2352	6.4	8.32	231.0	0				
11/27/2015	18:28:32	2398	6.2	8.32	236.2	0				
11/27/2015	18:29:22	2407	6.4	8.32	241.4	0				



Well			Field		Job Start		Customer		Job Number	
Wilson Ranch 34N-27HZ			Wattenberg		Nov/27/2015		Anadarko		CYUT-00129	
Date	Time 24-hr clock	Treating Pressure PSI	Flow Rate B/M	Density LB/G	Volume BBL	Solid Fraction NULL	Message			
11/27/2015	18:31:02	2456	6.2	8.32	251.9	0				
11/27/2015	18:31:52	2425	6.3	8.32	257.1	0				
11/27/2015	18:32:42	2473	6.4	8.31	262.3	0				
11/27/2015	18:33:32	2489	6.2	8.32	267.5	0				
11/27/2015	18:34:22	2416	6.2	8.32	272.7	0				
11/27/2015	18:35:12	2505	6.3	8.31	278.0	0				
11/27/2015	18:36:02	2493	6.2	8.31	283.2	0				
11/27/2015	18:36:52	2541	6.3	8.31	288.4	0				
11/27/2015	18:37:42	2507	6.3	8.32	293.6	0				
11/27/2015	18:38:32	2498	6.3	8.32	298.9	0				
11/27/2015	18:39:22	2527	6.2	8.32	304.1	0				
11/27/2015	18:40:12	2520	6.3	8.31	309.3	0				
11/27/2015	18:41:02	2570	6.3	8.31	314.5	0				
11/27/2015	18:41:52	2582	6.3	8.31	319.7	0				
11/27/2015	18:42:42	2547	6.3	8.31	324.9	0				
11/27/2015	18:43:32	2698	6.2	8.31	330.1	0				
11/27/2015	18:44:22	2680	6.2	8.31	335.4	0				
11/27/2015	18:45:12	2587	6.3	8.31	340.6	0				
11/27/2015	18:46:02	2640	6.2	8.31	345.8	0				
11/27/2015	18:46:52	2652	6.3	8.31	351.0	0				
11/27/2015	18:47:42	2614	6.3	8.31	356.2	0				
11/27/2015	18:48:32	2691	6.2	8.31	361.4	0				
11/27/2015	18:49:22	2659	6.3	8.31	366.6	0				
11/27/2015	18:50:00	2652	6.3	8.31	370.6	0	Cmt back @ 368 bbls away			
11/27/2015	18:50:12	2684	6.2	8.31	371.8	0				
11/27/2015	18:51:02	2692	6.3	8.31	377.0	0				
11/27/2015	18:51:52	2552	5.0	8.31	382.1	0				
11/27/2015	18:52:42	2485	5.0	8.31	386.2	0				
11/27/2015	18:53:32	2594	5.0	8.31	390.2	0				
11/27/2015	18:54:22	2401	3.4	8.31	393.3	0				
11/27/2015	18:55:12	2269	1.9	8.31	395.5	0				
11/27/2015	18:56:02	2222	2.0	8.31	397.2	0				
11/27/2015	18:56:52	2257	2.0	8.31	398.8	0				
11/27/2015	18:57:42	2201	2.0	8.31	400.4	0				
11/27/2015	18:58:32	2240	2.0	8.31	402.1	0				
11/27/2015	18:59:00	2199	2.0	8.31	403.0	0	End Displacement			
11/27/2015	18:59:01	2241	2.0	8.31	403.0	0	No Bump, Pump 1/2 Shoe			
11/27/2015	18:59:10	2245	2.0	8.31	403.3	0	Hold Pressure: 1870 psi			
11/27/2015	18:59:22	2186	2.0	8.31	403.7	0				
11/27/2015	19:00:12	1896	0.0	8.31	404.4	0				
11/27/2015	19:01:02	1872	0.0	8.31	404.4	0				
11/27/2015	19:01:52	1879	0.0	8.31	404.4	0				
11/27/2015	19:02:00	1881	0.0	8.31	404.4	0	Floats Held, 2.5 bbls back			
11/27/2015	19:02:30	1890	0.0	8.31	404.4	0	22 bbls Cmt back			
11/27/2015	19:02:42	1633	0.0	8.32	404.4	0				
11/27/2015	19:03:00	498	0.0	8.32	404.4	0	Lost Acquisition			
11/27/2015	19:03:32	38	0.0	8.32	404.4	0				
11/27/2015	19:04:22	37	0.0	8.32	404.4	0				
11/27/2015	19:05:12	37	0.0	8.32	404.4	0				
11/27/2015	19:06:02	37	0.0	8.32	404.4	0				
11/27/2015	19:06:52	37	0.0	8.32	404.4	0				

<b>Well</b> Wilson Ranch 34N-27HZ	<b>Field</b> Wattenberg	<b>Job Start</b> Nov/27/2015	<b>Customer</b> Anadarko	<b>Job Number</b> CYUT-00129
--------------------------------------	----------------------------	---------------------------------	-----------------------------	---------------------------------

Post Job Summary

Average Pump Rates, bbl/min					Volume of Fluid Injected, bbl				
Slurry 5.5	N2	Mud	Maximum Rate 6.4		Total Slurry 731.0	Mud 0.0	Spacer 88.0	N2	
Treating Pressure Summary, psi					Breakdown Fluid				
Maximum 5439	Final 37	Average 896	Bump Plug to 2500	Breakdown	Type		Volume bbl		Density lb/gal
Avg. N2 Percent %		Designed Slurry Volume 729.0 bbl		Displacement 390.0 bbl		Mix Water Temp 80 degF		Cement Circulated to Surface? <input checked="" type="checkbox"/>	Volume bbl
								Washed Thru Perfs <input type="checkbox"/>	To ft
Customer or Authorized Representative Tim Joubert				Schlumberger Supervisor Matlock/Terry				Circulation Lost <input type="checkbox"/>	Job Completed <input checked="" type="checkbox"/>
								-	-