

Location:	COLORADO	Slot:	SLOT#05 NORTH PLATTE O34-K31-13HNB (679'FSL & 401'FEL, SEC.13)
Field:	WELD COUNTY	Well:	NORTH PLATTE O34-K31-13HNB
Facility:	SEC.13-T05N-R63W	Wellbore:	NORTH PLATTE O34-K31-13HNB PWB

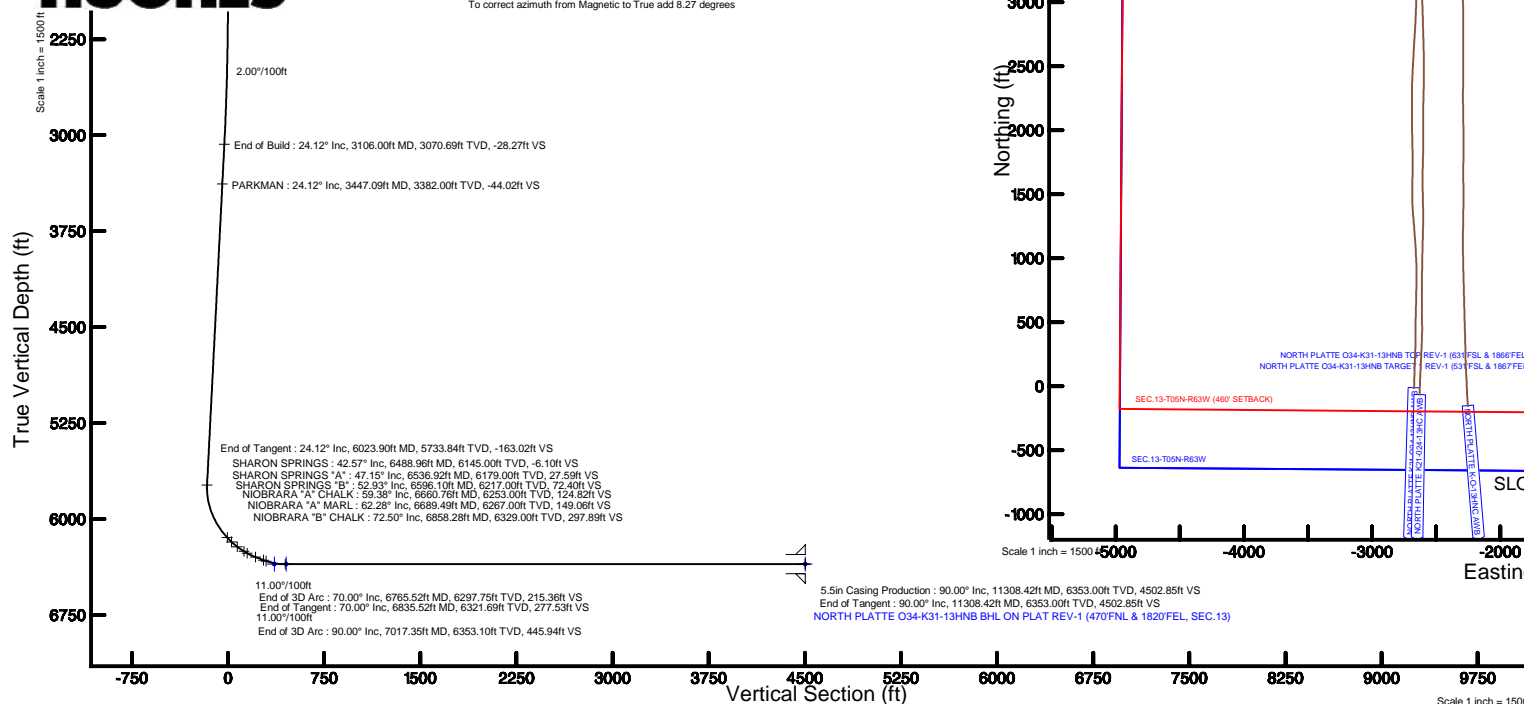
Plot reference wellpath is NORTH PLATTE O34-K31-13HNB PWP (REV-B.0)	
True vertical depths are referenced to XTREME 22 (17KB) (RKB)	Grid System: NAD83 / Lambert Colorado SP, Northern Zone (501), US feet
Measured depths are referenced to XTREME 22 (17KB) (RKB)	North Reference: True north
XTREME 22 (17KB) (RKB) to Mean Sea Level: 4614 feet	Scale: True distance
Mean Sea Level to Mud line (At Slot: SLOTH05 NORTH PLATTE O34-K31-13HNB (679FSL & 401FEL, SEC.13): 0 feet	Depths are in feet
Coordinates are in feet referenced to Slot	Created by: ingmjmr on 1/28/2016

Facility Name			Grid East (US ft)	Grid North (US ft)	Latitude	Longitude
SEC.13-T09N-R63W			3312874.958	1388185.127	40°23'36.708"N	104°22'36.084"W
Slot	Local N (ft)	Local E (ft)	Grid East (US ft)	Grid North (US ft)	Latitude	Longitude
SLOT#05 NORTH PLATTE 034-K31-13#NB (E79FSL & 401FEL SEC.13)	61.93	39.00	3312913.165	1388247.547	40°23'37.320"N	104°22'35.580"W
XTREME 22 (17XB) (RKB) to Mud line (At Slot: SLOT#05 NORTH PLATTE 034-K31-13#NB (E79FSL & 401FEL SEC.13))						4614ft
Mean Sea Level to Mud line (At Slot: SLOT#05 NORTH PLATTE 034-K31-13#NB (E79FSL & 401FEL SEC.13))						0ft
XTREME 22 (17XB) (RKB) to Mean Sea Level						4614ft



BGM (1945.0 to 2017.0) Dip: 67.01° Field: 52609.5 nT
Magnetic North is 8.27 degrees East of True North (at 1/28/2016)

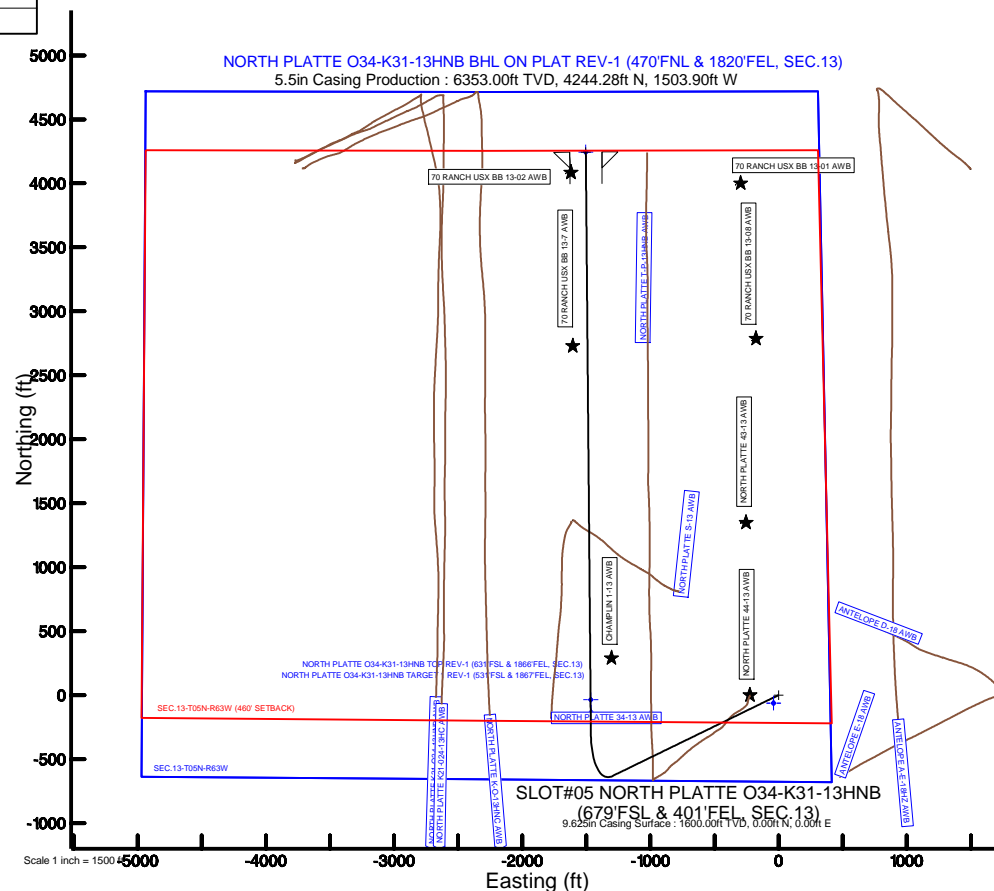
To correct azimuth from Magnetic to True add 8.27 degrees



Design Comment	MD (ft)	Inc (°)	Az (°)	TVD (ft)	Local N (ft)	Local E (ft)	DLS (°/100ft)	VS (ft)
Tie On	17.00	0.000	244.000	17.00	0.00	0.00	0.00	0.00
End of Tangent	1900.00	0.000	244.000	1900.00	0.00	0.00	0.00	0.00
End of Build	3106.00	24.120	244.000	3070.69	-109.65	-224.81	2.00	-28.27
End of Tangent	6023.90	24.120	244.000	5733.84	-632.36	-1296.53	0.00	-163.02
End of 3D Arc	6765.52	70.000	359.564	6297.75	-290.55	-1464.81	11.00	215.36
End of Tangent	6835.52	70.000	359.564	6321.69	-224.78	-1465.31	0.00	277.53
End of 3D Arc	7017.35	90.001	359.504	6353.10	-46.62	-1466.76	11.00	445.94
End of Tangent	11308.42	90.001	359.504	6353.00	4244.28	-1503.90	0.00	4502.85

Start MD (ft)	End MD (ft)	Tool	Model	Log Name/Comment	Wellbore
17.00	11308.42	NaviTrak	Custom NaviTrak (MagCorr) (Rockies 0.03Gt model)		NORTH PLATTE 034-K31-13HNB PWB

MD (ft)	Inc (°)	Az (°)	TVD (ft)	Local N (ft)	Local E (ft)	Grid East (US ft)	Grid North (US ft)	Latitude	Longitude
11308.42	90.001	359.504	6353.00	4244.28	-1503.90	3311355.68	1392472.26	40°24'19.260"N	104°22'55.020"W



5.5in Casing Production : 90.00° Inc, 11308.42ft MD, 6353.00ft TVD, 4502.85ft VS
End of Tangent : 90.00° Inc, 11308.42ft MD, 6353.00ft TVD, 4502.85ft VS
NORTH PLATTE O34-K31-13HNB BHL ON PLAT REV-1 (470°/FNL & 1820°/FEL, SEC.13)

Scale 1 inch = 1500 ft

BONANZA CREEK OIL COMPANY

Location: COLORADO

Slot: SLOT#02 NORTH PLATTE Y44-U41-13HNB (619'FSL & 403'FEL, SEC.13)

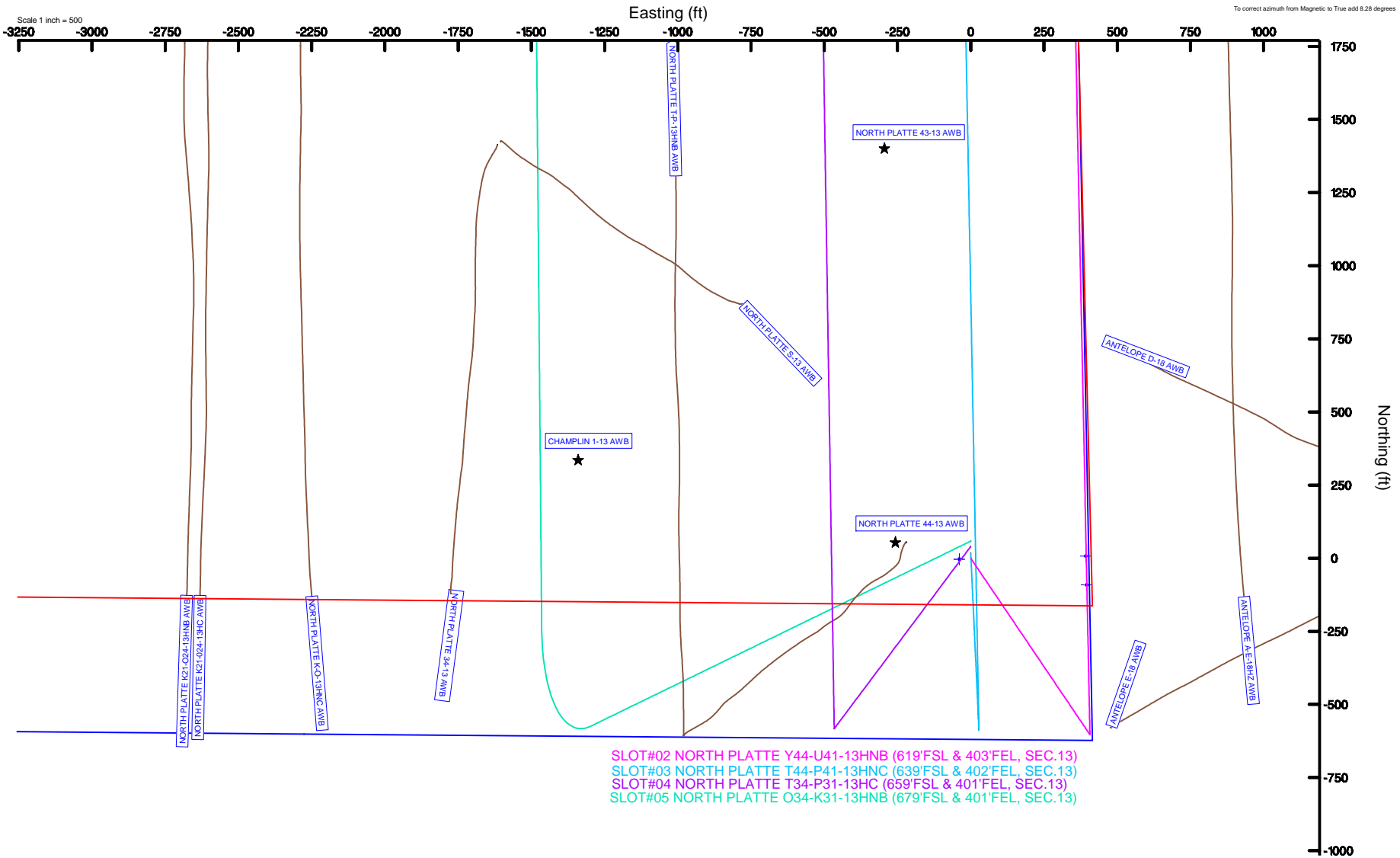
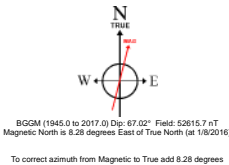
Field: WELD COUNTY

Well: NORTH PLATTE Y44-U41-13HNB

Facility: SEC.13-T05N-R63W

Wellbore: NORTH PLATTE Y44-U41-13HNB PWB

Plot reference wellpath is NORTH PLATTE Y44-U41-13HNB PWB (REV-B.0)	
True vertical depths are referenced to XTREME 22 (17'KB) (RKB)	Grid System: NAD83 / Lambert Colorado SP, Northern Zone (501), US feet
Measured depths are referenced to XTREME 22 (17'KB) (RKB)	North Reference: True north
XTREME 22 (17'KB) (RKB) to Mean Sea Level: 4614 feet	Scale: True distance
Mean Sea Level to Mud line (At Slot: SLOT#02 NORTH PLATTE Y44-U41-13HNB (619'FSL & 403'FEL, SEC.13)): 0 feet	Depths are in feet
Coordinates are in feet referenced to Slot	Created by: ingnjamr on 1/28/2016





Planned Wellpath Report

NORTH PLATTE O34-K31-13HNB PWP (REV-B.0)
Page 1 of 6



REFERENCE WELLPATH IDENTIFICATION

Operator	BONANZA CREEK OIL COMPANY	Slot	SLOT#05 NORTH PLATTE O34-K31-13HNB (679'FSL & 401'FEL, SEC.13)
Area	COLORADO	Well	NORTH PLATTE O34-K31-13HNB
Field	WELD COUNTY	Wellbore	NORTH PLATTE O34-K31-13HNB PWB
Facility	SEC.13-T05N-R63W		

REPORT SETUP INFORMATION

Projection System	NAD83 / Lambert Colorado SP, Northern Zone (501), US feet	Software System	WellArchitect® 4.1.1
North Reference	True	User	Ingmjmr
Scale	0.99996	Report Generated	1/28/2016 at 11:53:35 AM
Convergence at slot	0.73° East	Database/Source file	WA_DEN_Denver_Defn/NORTH_PLATTE_O34-K31-13HNB_PWB.xml

WELLPATH LOCATION

	Local coordinates		Grid coordinates		Geographic coordinates	
	North[ft]	East[ft]	Easting[US ft]	Northing[US ft]	Latitude	Longitude
Slot Location	61.93	39.00	3312913.17	1388247.55	40°23'37.320"N	104°22'35.580"W
Facility Reference Pt			3312874.96	1388185.13	40°23'36.708"N	104°22'36.084"W
Field Reference Pt			3335925.10	1457282.25	40°34'56.460"N	104°17'26.016"W

WELLPATH DATUM

Calculation method	Minimum curvature	XTREME 22 (17'KB) (RKB) to Facility Vertical Datum	4614.00ft
Horizontal Reference Pt	Slot	XTREME 22 (17'KB) (RKB) to Mean Sea Level	4614.00ft
Vertical Reference Pt	XTREME 22 (17'KB) (RKB)	XTREME 22 (17'KB) (RKB) to Mud Line at Slot (SLOT#05 NORTH PLATTE O34-K31-13HNB (679'FSL & 401'FEL, SEC.13))	4614.00ft
MD Reference Pt	XTREME 22 (17'KB) (RKB)	Section Origin	N 0.00, E 0.00 ft
Field Vertical Reference	Mean Sea Level	Section Azimuth	340.49°



Planned Wellpath Report

NORTH PLATTE O34-K31-13HNB PWP (REV-B.0)
Page 2 of 6



REFERENCE WELLPATH IDENTIFICATION

Operator	BONANZA CREEK OIL COMPANY	Slot	SLOT#05 NORTH PLATTE O34-K31-13HNB (679'FSL & 401'FEL, SEC.13)
Area	COLORADO	Well	NORTH PLATTE O34-K31-13HNB
Field	WELD COUNTY	Wellbore	NORTH PLATTE O34-K31-13HNB PWB
Facility	SEC.13-T05N-R63W		

WELLPATH DATA (128 stations) † = interpolated/extrapolated station

MD [ft]	Inclination [°]	Azimuth [°]	TVD [ft]	Vert Sect [ft]	North [ft]	East [ft]	DLS [°/100ft]	Comments
0.00†	0.000	244.000	0.00	0.00	0.00	0.00	0.00	
17.00	0.000	244.000	17.00	0.00	0.00	0.00	0.00	Tie On
117.00†	0.000	244.000	117.00	0.00	0.00	0.00	0.00	
217.00†	0.000	244.000	217.00	0.00	0.00	0.00	0.00	
317.00†	0.000	244.000	317.00	0.00	0.00	0.00	0.00	
417.00†	0.000	244.000	417.00	0.00	0.00	0.00	0.00	
517.00†	0.000	244.000	517.00	0.00	0.00	0.00	0.00	
617.00†	0.000	244.000	617.00	0.00	0.00	0.00	0.00	
717.00†	0.000	244.000	717.00	0.00	0.00	0.00	0.00	
817.00†	0.000	244.000	817.00	0.00	0.00	0.00	0.00	
917.00†	0.000	244.000	917.00	0.00	0.00	0.00	0.00	
1017.00†	0.000	244.000	1017.00	0.00	0.00	0.00	0.00	
1117.00†	0.000	244.000	1117.00	0.00	0.00	0.00	0.00	
1217.00†	0.000	244.000	1217.00	0.00	0.00	0.00	0.00	
1317.00†	0.000	244.000	1317.00	0.00	0.00	0.00	0.00	
1417.00†	0.000	244.000	1417.00	0.00	0.00	0.00	0.00	
1517.00†	0.000	244.000	1517.00	0.00	0.00	0.00	0.00	
1617.00†	0.000	244.000	1617.00	0.00	0.00	0.00	0.00	
1717.00†	0.000	244.000	1717.00	0.00	0.00	0.00	0.00	
1817.00†	0.000	244.000	1817.00	0.00	0.00	0.00	0.00	
1900.00	0.000	244.000	1900.00	0.00	0.00	0.00	0.00	End of Tangent
1917.00†	0.340	244.000	1917.00	-0.01	-0.02	-0.05	2.00	
2017.00†	2.340	244.000	2016.97	-0.27	-1.05	-2.15	2.00	
2117.00†	4.340	244.000	2116.79	-0.93	-3.60	-7.38	2.00	
2217.00†	6.340	244.000	2216.35	-1.98	-7.68	-15.75	2.00	
2317.00†	8.340	244.000	2315.53	-3.42	-13.28	-27.23	2.00	
2417.00†	10.340	244.000	2414.20	-5.26	-20.39	-41.82	2.00	
2517.00†	12.340	244.000	2512.24	-7.48	-29.01	-59.49	2.00	
2617.00†	14.340	244.000	2609.54	-10.09	-39.13	-80.22	2.00	
2717.00†	16.340	244.000	2705.97	-13.08	-50.72	-104.00	2.00	
2817.00†	18.340	244.000	2801.42	-16.44	-63.79	-130.79	2.00	
2917.00†	20.340	244.000	2895.77	-20.19	-78.31	-160.55	2.00	
3017.00†	22.340	244.000	2988.91	-24.30	-94.26	-193.26	2.00	
3106.00	24.120	244.000	3070.69	-28.27	-109.65	-224.81	2.00	End of Build
3117.00†	24.120	244.000	3080.73	-28.77	-111.62	-228.85	0.00	
3217.00†	24.120	244.000	3172.00	-33.39	-129.53	-265.58	0.00	
3317.00†	24.120	244.000	3263.27	-38.01	-147.44	-302.31	0.00	
3417.00†	24.120	244.000	3354.54	-42.63	-165.36	-339.03	0.00	
3447.09†	24.120	244.000	3382.00	-44.02	-170.75	-350.08	0.00	PARKMAN
3517.00†	24.120	244.000	3445.81	-47.25	-183.27	-375.76	0.00	
3617.00†	24.120	244.000	3537.08	-51.87	-201.19	-412.49	0.00	
3717.00†	24.120	244.000	3628.35	-56.48	-219.10	-449.22	0.00	
3817.00†	24.120	244.000	3719.62	-61.10	-237.01	-485.95	0.00	
3917.00†	24.120	244.000	3810.89	-65.72	-254.93	-522.68	0.00	
4017.00†	24.120	244.000	3902.16	-70.34	-272.84	-559.41	0.00	



Planned Wellpath Report

NORTH PLATTE O34-K31-13HNB PWP (REV-B.0)

Page 3 of 6



REFERENCE WELLPATH IDENTIFICATION

Operator	BONANZA CREEK OIL COMPANY	Slot	SLOT#05 NORTH PLATTE O34-K31-13HNB (679'FSL & 401'FEL, SEC.13)
Area	COLORADO	Well	NORTH PLATTE O34-K31-13HNB
Field	WELD COUNTY	Wellbore	NORTH PLATTE O34-K31-13HNB PWB
Facility	SEC.13-T05N-R63W		

WELLPATH DATA (128 stations) † = interpolated/extrapolated station

MD [ft]	Inclination [°]	Azimuth [°]	TVD [ft]	Vert Sect [ft]	North [ft]	East [ft]	DLS [°/100ft]	Comments
4117.00†	24.120	244.000	3993.42	-74.96	-290.76	-596.14	0.00	
4217.00†	24.120	244.000	4084.69	-79.57	-308.67	-632.87	0.00	
4317.00†	24.120	244.000	4175.96	-84.19	-326.58	-669.60	0.00	
4417.00†	24.120	244.000	4267.23	-88.81	-344.50	-706.33	0.00	
4517.00†	24.120	244.000	4358.50	-93.43	-362.41	-743.05	0.00	
4617.00†	24.120	244.000	4449.77	-98.05	-380.33	-779.78	0.00	
4717.00†	24.120	244.000	4541.04	-102.67	-398.24	-816.51	0.00	
4817.00†	24.120	244.000	4632.31	-107.28	-416.15	-853.24	0.00	
4917.00†	24.120	244.000	4723.58	-111.90	-434.07	-889.97	0.00	
5017.00†	24.120	244.000	4814.85	-116.52	-451.98	-926.70	0.00	
5117.00†	24.120	244.000	4906.12	-121.14	-469.90	-963.43	0.00	
5217.00†	24.120	244.000	4997.39	-125.76	-487.81	-1000.16	0.00	
5317.00†	24.120	244.000	5088.65	-130.38	-505.72	-1036.89	0.00	
5417.00†	24.120	244.000	5179.92	-134.99	-523.64	-1073.62	0.00	
5517.00†	24.120	244.000	5271.19	-139.61	-541.55	-1110.35	0.00	
5617.00†	24.120	244.000	5362.46	-144.23	-559.47	-1147.08	0.00	
5717.00†	24.120	244.000	5453.73	-148.85	-577.38	-1183.80	0.00	
5817.00†	24.120	244.000	5545.00	-153.47	-595.29	-1220.53	0.00	
5917.00†	24.120	244.000	5636.27	-158.08	-613.21	-1257.26	0.00	
6017.00†	24.120	244.000	5727.54	-162.70	-631.12	-1293.99	0.00	
6023.90	24.120	244.000	5733.84	-163.02	-632.36	-1296.53	0.00	End of Tangent
6117.00†	20.675	269.564	5820.10	-159.79	-640.84	-1330.15	11.00	
6217.00†	22.029	299.867	5913.52	-139.73	-631.61	-1364.17	11.00	
6317.00†	27.831	322.299	6004.37	-103.20	-603.72	-1394.80	11.00	
6417.00†	35.985	336.397	6089.30	-51.56	-558.19	-1420.92	11.00	
6488.96†	42.567	343.366	6145.00	-6.10	-515.43	-1436.37	11.00	SHARON SPRINGS
6517.00†	45.229	345.615	6165.21	13.29	-496.69	-1441.56	11.00	
6536.92†	47.145	347.089	6179.00	27.59	-482.72	-1444.95	11.00	SHARON SPRINGS "A"
6596.10†	52.933	350.981	6217.00	72.40	-438.21	-1453.51	11.00	SHARON SPRINGS "B"
6617.00†	55.005	352.212	6229.29	88.99	-421.50	-1455.98	11.00	
6660.76†	59.381	354.601	6253.00	124.82	-384.97	-1460.18	11.00	NIOBRARA "A" CHALK
6689.49†	62.275	356.053	6267.00	149.06	-359.98	-1462.22	11.00	NIOBRARA "A" MARL
6717.00†	65.061	357.373	6279.20	172.73	-335.36	-1463.63	11.00	
6765.52	70.000	359.564	6297.75	215.36	-290.55	-1464.81	11.00	End of 3D Arc
6817.00†	70.000	359.564	6315.35	261.08	-242.18	-1465.18	0.00	
6835.52	70.000	359.564	6321.69	277.53	-224.78	-1465.31	0.00	End of Tangent
6858.28†	72.503	359.556	6329.00	297.89	-203.23	-1465.48	11.00	NIOBRARA "B" CHALK
6917.00†	78.962	359.536	6343.46	351.66	-146.35	-1465.93	11.00	
7017.00†	89.962	359.504	6353.10	445.60	-46.97	-1466.76	11.00	
7017.35	90.001	359.504	6353.10	445.94	-46.62	-1466.76	11.00	End of 3D Arc
7117.00†	90.001	359.504	6353.10	540.15	53.02	-1467.63	0.00	
7217.00†	90.001	359.504	6353.09	634.69	153.02	-1468.49	0.00	
7317.00†	90.001	359.504	6353.09	729.23	253.01	-1469.36	0.00	
7417.00†	90.001	359.504	6353.09	823.78	353.01	-1470.22	0.00	
7517.00†	90.001	359.504	6353.09	918.32	453.01	-1471.09	0.00	



Planned Wellpath Report

NORTH PLATTE O34-K31-13HNB PWP (REV-B.0)
Page 4 of 6



REFERENCE WELLPATH IDENTIFICATION

Operator	BONANZA CREEK OIL COMPANY	Slot	SLOT#05 NORTH PLATTE O34-K31-13HNB (679'FSL & 401'FEL, SEC.13)
Area	COLORADO	Well	NORTH PLATTE O34-K31-13HNB
Field	WELD COUNTY	Wellbore	NORTH PLATTE O34-K31-13HNB PWB
Facility	SEC.13-T05N-R63W		

WELLPATH DATA (128 stations) † = interpolated/extrapolated station

MD [ft]	Inclination [°]	Azimuth [°]	TVD [ft]	Vert Sect [ft]	North [ft]	East [ft]	DLS [°/100ft]	Comments
7617.00†	90.001	359.504	6353.09	1012.86	553.00	-1471.95	0.00	
7717.00†	90.001	359.504	6353.08	1107.41	653.00	-1472.82	0.00	
7817.00†	90.001	359.504	6353.08	1201.95	753.00	-1473.69	0.00	
7917.00†	90.001	359.504	6353.08	1296.49	852.99	-1474.55	0.00	
8017.00†	90.001	359.504	6353.08	1391.04	952.99	-1475.42	0.00	
8117.00†	90.001	359.504	6353.07	1485.58	1052.98	-1476.28	0.00	
8217.00†	90.001	359.504	6353.07	1580.12	1152.98	-1477.15	0.00	
8317.00†	90.001	359.504	6353.07	1674.67	1252.98	-1478.01	0.00	
8417.00†	90.001	359.504	6353.07	1769.21	1352.97	-1478.88	0.00	
8517.00†	90.001	359.504	6353.06	1863.75	1452.97	-1479.74	0.00	
8617.00†	90.001	359.504	6353.06	1958.30	1552.97	-1480.61	0.00	
8717.00†	90.001	359.504	6353.06	2052.84	1652.96	-1481.47	0.00	
8817.00†	90.001	359.504	6353.06	2147.38	1752.96	-1482.34	0.00	
8917.00†	90.001	359.504	6353.06	2241.93	1852.95	-1483.20	0.00	
9017.00†	90.001	359.504	6353.05	2336.47	1952.95	-1484.07	0.00	
9117.00†	90.001	359.504	6353.05	2431.01	2052.95	-1484.94	0.00	
9217.00†	90.001	359.504	6353.05	2525.56	2152.94	-1485.80	0.00	
9317.00†	90.001	359.504	6353.05	2620.10	2252.94	-1486.67	0.00	
9417.00†	90.001	359.504	6353.04	2714.64	2352.94	-1487.53	0.00	
9517.00†	90.001	359.504	6353.04	2809.18	2452.93	-1488.40	0.00	
9617.00†	90.001	359.504	6353.04	2903.73	2552.93	-1489.26	0.00	
9717.00†	90.001	359.504	6353.04	2998.27	2652.92	-1490.13	0.00	
9817.00†	90.001	359.504	6353.03	3092.81	2752.92	-1490.99	0.00	
9917.00†	90.001	359.504	6353.03	3187.36	2852.92	-1491.86	0.00	
10017.00†	90.001	359.504	6353.03	3281.90	2952.91	-1492.72	0.00	
10117.00†	90.001	359.504	6353.03	3376.44	3052.91	-1493.59	0.00	
10217.00†	90.001	359.504	6353.03	3470.99	3152.91	-1494.46	0.00	
10317.00†	90.001	359.504	6353.02	3565.53	3252.90	-1495.32	0.00	
10417.00†	90.001	359.504	6353.02	3660.07	3352.90	-1496.19	0.00	
10517.00†	90.001	359.504	6353.02	3754.62	3452.89	-1497.05	0.00	
10617.00†	90.001	359.504	6353.02	3849.16	3552.89	-1497.92	0.00	
10717.00†	90.001	359.504	6353.01	3943.70	3652.89	-1498.78	0.00	
10817.00†	90.001	359.504	6353.01	4038.25	3752.88	-1499.65	0.00	
10917.00†	90.001	359.504	6353.01	4132.79	3852.88	-1500.51	0.00	
11017.00†	90.001	359.504	6353.01	4227.33	3952.88	-1501.38	0.00	
11117.00†	90.001	359.504	6353.00	4321.88	4052.87	-1502.24	0.00	
11217.00†	90.001	359.504	6353.00	4416.42	4152.87	-1503.11	0.00	
11308.42	90.001	359.504	6353.00 ¹	4502.85	4244.28	-1503.90	0.00	End of Tangent



Planned Wellpath Report

NORTH PLATTE O34-K31-13HNB PWP (REV-B.0)
Page 5 of 6



REFERENCE WELLPATH IDENTIFICATION

Operator	BONANZA CREEK OIL COMPANY	Slot	SLOT#05 NORTH PLATTE O34-K31-13HNB (679'FSL & 401'FEL, SEC.13)
Area	COLORADO	Well	NORTH PLATTE O34-K31-13HNB
Field	WELD COUNTY	Wellbore	NORTH PLATTE O34-K31-13HNB PWB
Facility	SEC.13-T05N-R63W		

HOLE & CASING SECTIONS -

Ref Wellbore: NORTH PLATTE O34-K31-13HNB PWB

Ref Wellpath: NORTH PLATTE O34-K31-13HNB PWP (REV-B.0)

String/Diameter	Start MD [ft]	End MD [ft]	Interval [ft]	Start TVD [ft]	End TVD [ft]	Start N/S [ft]	Start E/W [ft]	End N/S [ft]	End E/W [ft]
13.5in Open Hole	17.00	1600.00	1583.00	17.00	1600.00	0.00	0.00	0.00	0.00
9.625in Casing Surface	17.00	1600.00	1583.00	17.00	1600.00	0.00	0.00	0.00	0.00
8.75in Open Hole	1600.00	11308.42	9708.42	1600.00	6353.00	0.00	0.00	4244.28	-1503.90
5.5in Casing Production	17.00	11308.42	11291.42	17.00	6353.00	0.00	0.00	4244.28	-1503.90

TARGETS

Name	MD [ft]	TVD [ft]	North [ft]	East [ft]	Grid East [US ft]	Grid North [US ft]	Latitude	Longitude	Shape
SEC.13-T05N-R63W		0.00	-61.93	-39.00	3312874.96	1388185.13	40°23'36.708"N	104°22'36.084"W	polygon
1) NORTH PLATTE O34-K31-13HNB BHL ON PLAT REV-1 (470'FNL & 1820'FEL, SEC.13)	11308.42	6353.00	4244.28	-1503.90	3311355.68	1392472.26	40°24'19.260"N	104°22'55.020"W	point
NORTH PLATTE O34-K31-13HNB TARGET 1 REV-1 (531'FSL & 1867'FEL, SEC.13)		6353.00	-134.75	-1462.38	3311452.67	1388094.28	40°23'35.988"N	104°22'54.480"W	point
NORTH PLATTE O34-K31-13HNB TOP REV-1 (631'FSL & 1866'FEL, SEC.13)		6353.00	-36.39	-1465.16	3311448.64	1388192.60	40°23'36.960"N	104°22'54.516"W	point
SEC.13-T05N-R63W (460' SETBACK)		6514.00	-61.93	-39.00	3312874.96	1388185.13	40°23'36.708"N	104°22'36.084"W	polygon

SURVEY PROGRAM -

Ref Wellbore: NORTH PLATTE O34-K31-13HNB PWB

Ref Wellpath: NORTH PLATTE O34-K31-13HNB PWP (REV-B.0)

Start MD [ft]	End MD [ft]	Positional Uncertainty Model	Log Name/Comment	Wellbore
17.00	11308.42	Custom NaviTrak (MagCorr) (Rockies 0.03Gt model)		NORTH PLATTE O34-K31-13HNB PWB



Planned Wellpath Report

NORTH PLATTE O34-K31-13HNB PWP (REV-B.0)
Page 6 of 6



REFERENCE WELLPATH IDENTIFICATION

Operator	BONANZA CREEK OIL COMPANY	Slot	SLOT#05 NORTH PLATTE O34-K31-13HNB (679'FSL & 401'FEL, SEC.13)
Area	COLORADO	Well	NORTH PLATTE O34-K31-13HNB
Field	WELD COUNTY	Wellbore	NORTH PLATTE O34-K31-13HNB PWB
Facility	SEC.13-T05N-R63W		

WELLPATH COMMENTS

MD [ft]	Inclination [°]	Azimuth [°]	TVD [ft]	Comment
3447.09	24.120	244.000	3382.00	PARKMAN
6488.96	42.567	343.366	6145.00	SHARON SPRINGS
6536.92	47.145	347.089	6179.00	SHARON SPRINGS "A"
6596.10	52.933	350.981	6217.00	SHARON SPRINGS "B"
6660.76	59.381	354.601	6253.00	NIOBRARA "A" CHALK
6689.49	62.275	356.053	6267.00	NIOBRARA "A" MARL
6858.28	72.503	359.556	6329.00	NIOBRARA "B" CHALK

DESIGN COMMENTS

MD [ft]	Inclination [°]	Azimuth [°]	TVD [ft]	Comment
17.00	0.000	244.000	17.00	Tie On
1900.00	0.000	244.000	1900.00	End of Tangent
3106.00	24.120	244.000	3070.69	End of Build
6023.90	24.120	244.000	5733.84	End of Tangent
6765.52	70.000	359.564	6297.75	End of 3D Arc
6835.52	70.000	359.564	6321.69	End of Tangent
7017.35	90.001	359.504	6353.10	End of 3D Arc
11308.42	90.001	359.504	6353.00	End of Tangent