

MATCH LINE SHEET 2 OF 3
SHEET 1 OF 3

9/10
16/15
3.25" ALUM. CAP
PLS 13155

1/4 CORNER
SEC 10/SEC 15
2.5" ALUM. CAP
PLS 11434

10/11
15/14
3.25" ALUM. CAP
PLS 29430

N 89°56'17" E 2649.88'
SURFACE LOCATION
 GROUND ELEVATION=4872'

NAD 83
LATITUDE= 40.141223°
LONGITUDE= -104.995709°

LATITUDE= 40°08'28.403"
LONGITUDE= -104°59'44.551"

HEEL LOCATION

NAD 83
LATITUDE= 40.140729°
LONGITUDE= -104.992495°

LATITUDE= 40°08'26.623"
LONGITUDE= -104°59'32.982"

C-E1/16 CORNER
SECTION 15
2" ALUM. CAP
PLS 17502

BOTTOM HOLE LOCATION

NAD 83
LATITUDE= 40.161771'
LONGITUDE= -104.992324'

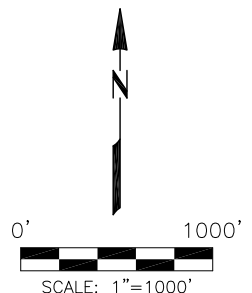
LATITUDE= 40°09'42.376"
LONGITUDE= -104°59'32.366"

1/4 CORNER
SEC 15/SEC 22
2.5" ALUM. CAP
PLS 18255

15/14
22/23
3.25" ALUM. CAP
PLS 29430

I, hereby certify to KERR-McGEE OIL & GAS ONSHORE L.P., that this Well Location Certificate was prepared under my direct supervision and that the drawing accurately depicts the proposed location of the well.

Mark A. Hall, PLS #36073
FOR AND ON BEHALF OF ACKLAM, INC.
195 Telluride Street Suite 7
Brighton CO 80601





WELL LOCATION CERTIFICATE

SURFACE 1786' FNL 845' FWL SEC. 15
GROUND ELEVATION=4872'

HEEL 1962' FNL 1744' FWL SEC. 15
BOTTOM HOLE 409' FSL 1732' FWL SEC. 3

SW1/4 NW1/4
SECTION 15, T2N, R68W, 6TH PM
WELD COUNTY, COLORADO

SCALE: 1"=1000'

1.  Found Section Corner
2.  Calculated Section Corner
3. Basis of Elevations: NAVD88 (GEOID12).
4. Basis of Bearings: Colorado coordinate system 1983 north zone ("GRID").
5. Basis of Distances: GRID; Combined Factor=0.999725831
6. GPS Operator: **Monty Wallace** PDOP **1.3**
7. See attachments for existing improvements within 500 feet of the well pad.
8. Well footages are measured at right angles to the section lines.
9. The Bottom Hole Location bears **N 06°52'37" E 7545'** from the Surface Location.

NOTICE: According to Colorado law you must commence any legal action based upon any defect in this survey within three years after you first discover such defect. In no event may any action based upon any defect in this survey be commenced more than ten years from the date of the certification shown hereon.

SHEET 1 OF 3

PREPARED FOR:

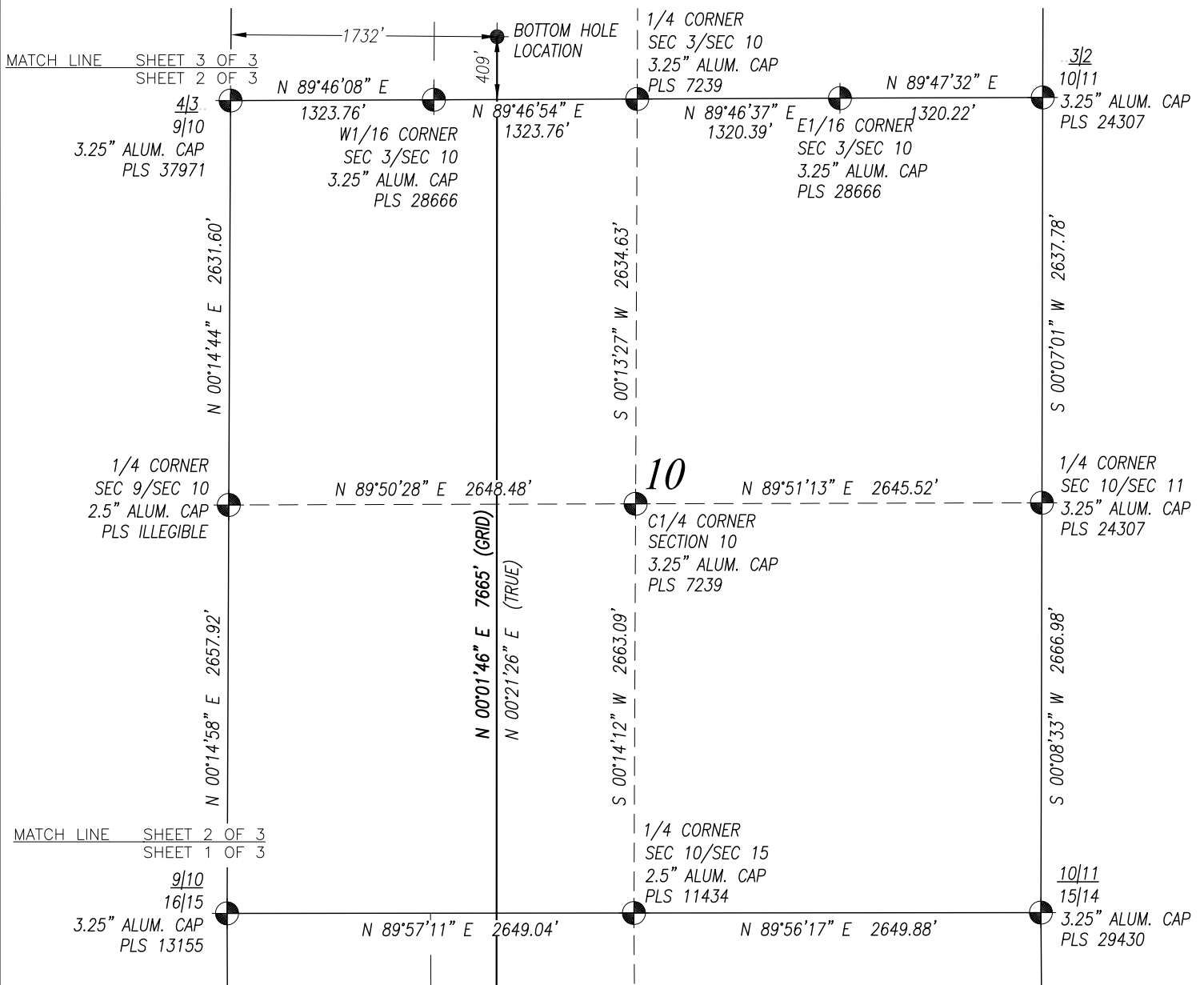

**Kerr-McGee Oil &
Gas Onshore L.P.**
1099 18th Street
Denver, Colorado 80202

Acklam, Inc.

DATE SURVEYED: 06/22/2015	
DATE DRAFTED: 08/18/2015	
DRAFTED BY: SMF	CHK BY: JMP
JOB No. 155000	REVISED:

WELL LOCATION CERTIFICATE: KEOWN STATE 36N-3HZ

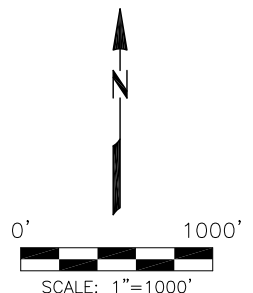
SECTION 10, TOWNSHIP 2 NORTH, RANGE 68 WEST, 6TH P.M.



SURVEYOR'S CERTIFICATION:

I, hereby certify to KERR-McGEE OIL & GAS ONSHORE L.P., that this Well Location Certificate was prepared under my direct supervision and that the drawing accurately depicts the proposed location of the well.

Mark A. Hall, PLS #36073
FOR AND ON BEHALF OF ACKLAM, INC.
195 Telluride Street Suite 7
Brighton CO 80601



NOTES:

- Found Section Corner
- Calculated Section Corner
- Basis of Elevations: NAVD88 (GEOID12).
- Basis of Bearings: Colorado coordinate system 1983 north zone ("GRID").
- Basis of Distances: GRID; Combined Factor=0.999725831
- GPS Operator: **Monty Wallace** PDOP **1.3**
- See attachments for existing improvements within 500 feet of the well pad.
- Well footages are measured at right angles to the section lines.
- The Bottom Hole Location bears **N 06°52'37" E 7545'** from the Surface Location.

NOTICE: According to Colorado law you must commence any legal action based upon any defect in this survey within three years after you first discover such defect. In no event may any action based upon any defect in this survey be commenced more than ten years from the date of the certification shown hereon.

PREPARED FOR:

KerrMcGee
Kerr-McGee Oil & Gas Onshore L.P.
1099 18th Street
Denver, Colorado 80202

Acklam, Inc.

DATE SURVEYED: 06/22/2015

DATE DRAFTED: 08/18/2015

DRAFTED BY: SMF CHK BY: JMP

JOB No. 155000 REVISED:

WELL LOCATION CERTIFICATE

KEOWN STATE 36N-3HZ

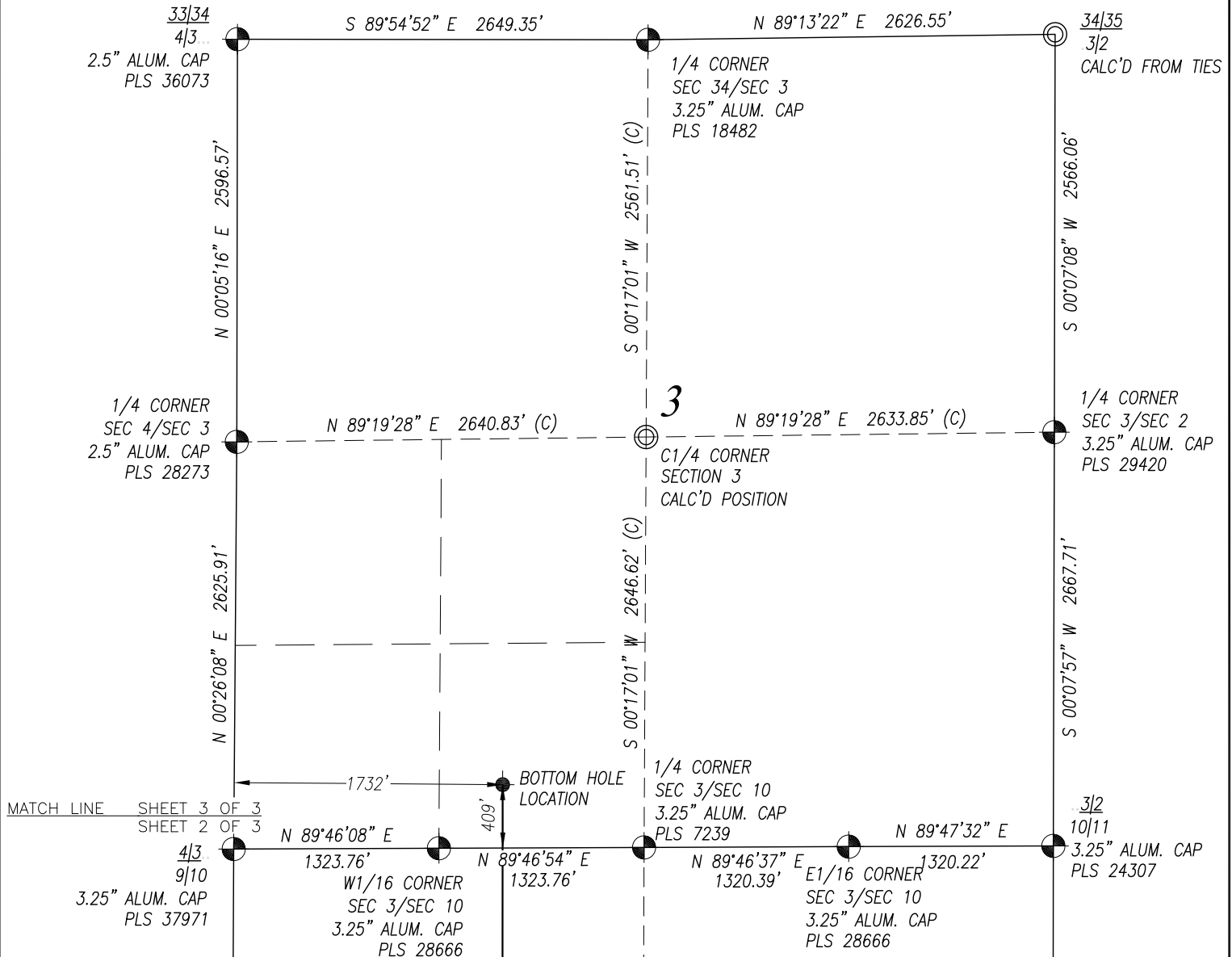
SURFACE 1786' FNL 845' FWL SEC. 15
GROUND ELEVATION=4872'

HEEL 1962' FNL 1744' FWL SEC. 15
BOTTOM HOLE 409' FSL 1732' FWL SEC. 3

SW1/4 NW1/4
SECTION 15, T2N, R68W, 6TH PM
WELD COUNTY, COLORADO

WELL LOCATION CERTIFICATE: KEOWN STATE 36N-3HZ

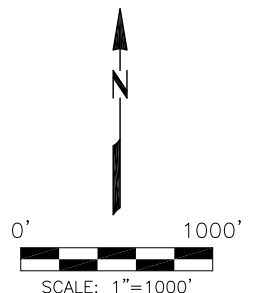
SECTION 3, TOWNSHIP 2 NORTH, RANGE 68 WEST, 6TH P.M.



SURVEYOR'S CERTIFICATION:

I, hereby certify to KERR-McGEE OIL & GAS ONSHORE L.P., that this Well Location Certificate was prepared under my direct supervision and that the drawing accurately depicts the proposed location of the well.

Mark A. Hall, PLS #36073
FOR AND ON BEHALF OF ACKLAM, INC.
195 Telluride Street Suite 7
Brighton CO 80601



NOTES:

- Found Section Corner
- Calculated Section Corner
- Basis of Elevations: NAVD88 (GEOID12).
- Basis of Bearings: Colorado coordinate system 1983 north zone ("GRID").
- Basis of Distances: GRID; Combined Factor=0.999725831
- GPS Operator: **Monty Wallace** PDOP 1.3
- See attachments for existing improvements within 500 feet of the well pad.
- Well footages are measured at right angles to the section lines.
- The Bottom Hole Location bears **N 06°52'37" E 7545'** from the Surface Location.

NOTICE: According to Colorado law you must commence any legal action based upon any defect in this survey within three years after you first discover such defect. In no event may any action based upon any defect in this survey be commenced more than ten years from the date of the certification shown hereon.

PREPARED FOR:

KerrMcGee
Kerr-McGee Oil & Gas Onshore L.P.
1099 18th Street
Denver, Colorado 80202

Acklam, Inc.

DATE SURVEYED: 06/22/2015

DATE DRAFTED: 08/18/2015

DRAFTED BY: SMF CHK BY: JMP

JOB No. 155000 REVISED:

WELL LOCATION CERTIFICATE

KEOWN STATE 36N-3HZ

SURFACE 1786' FNL 845' FWL SEC. 15
GROUND ELEVATION=4872'

HEEL 1962' FNL 1744' FWL SEC. 15
BOTTOM HOLE 409' FSL 1732' FWL SEC. 3

SW1/4 NW1/4
SECTION 15, T2N, R68W, 6TH PM
WELD COUNTY, COLORADO