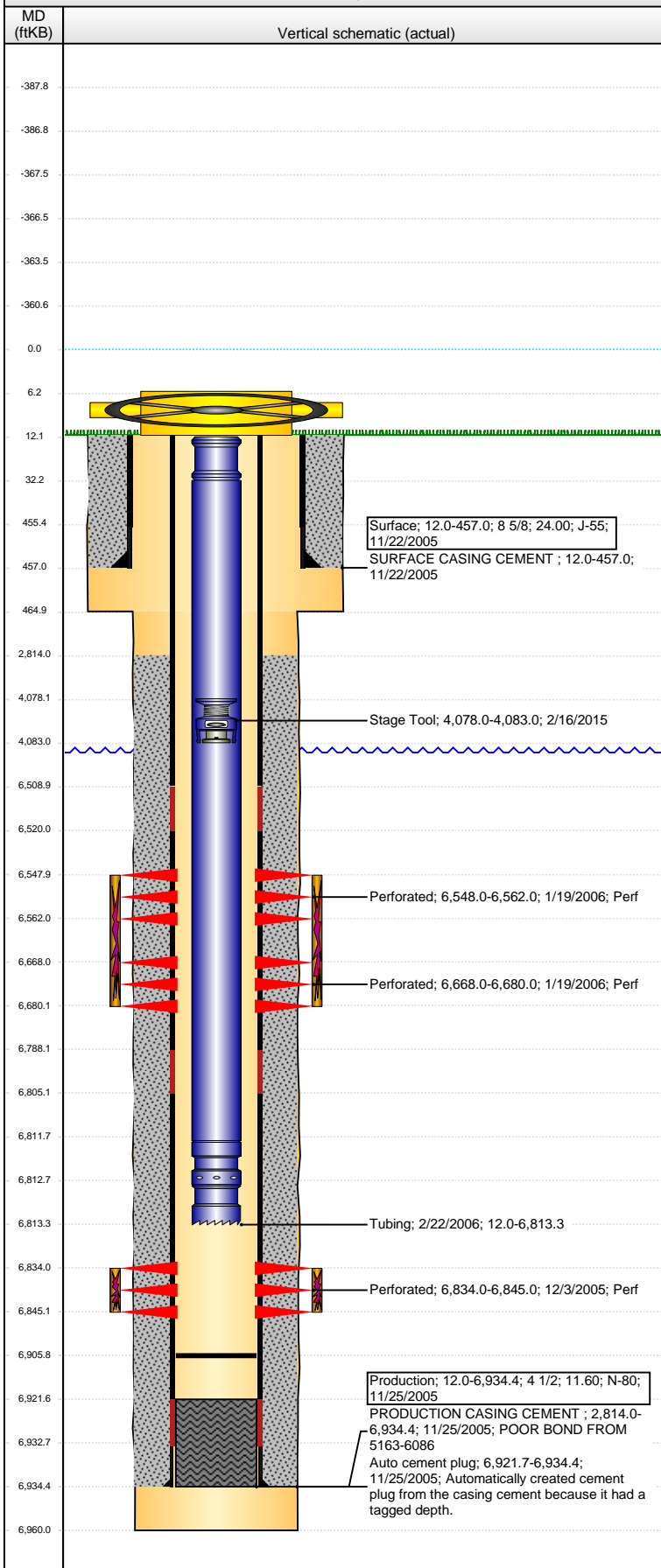


Well Name: ALLES A12-16

VERTICAL - ORIGINAL HOLE, 1/28/2016 11:02:02 AM



Well Header									
API 05-123-23276		Business Unit DJ BASIN		District 15		Well Config VERTICAL			
Original KB Elevation (ft) 4,686.00		KB - GL / MSL (ftKB) 12.00		Spud Date 11/21/2005		P & A Date			
Comment									
Directions To Well									
Congressional Location									
Quarter 1	Quarter 2	Quarter 3	Quarter 4	Section	Township	Twnshp N...	Range	Rng E/W Dir	
		SE	SE	12	6	N	64	W	
Bottom Hole Location									
North-South Distance (ft)		From N or S Line		East-West Distance (ft)			From E or W Line		
Plug Back Total Depths									
Date	Depth (ftKB)	Method			Com				
11/25/2005	6,921.7	CASING TALLY			SHOE W/ LATCH DOWN BAFFLE				
12/3/2005	6,900.0	CASED HOLE LOG			DEPTH LOGGER FROM CBL				
2/21/2006	6,906.0	TAG			CLEAN OUT & LAND TBG				
Wellbore Sections									
Section Des			Size (in)		Act Top, MD (ftKB)		Act Btm, MD (ftKB)		
SURFACE			12 1/4		12.0		465.0		
PRODUCTION			7 7/8		465.0		6,960.0		
Zone Statuses									
Zone Name	Status Date	Status	Fluid Type	Job	Prod Method				
NIOBRARA	1/21/2006	PR		DRILLING/CO...					
CODELL	1/21/2006	PR		DRILLING/CO...					
Casing Strings									
Surface, 457.0ftKB									
Casing Description Surface		Run Date 11/22/2005	OD (in) 8 5/8	Wt/Len (l... 24.00	Grade J-55	Top, MD (ft... 12.0	MD (ftKB) 457.0		
Production, 6,934.4ftKB									
Casing Description Production		Run Date 11/25/2005	OD (in) 4 1/2	Wt/Len (l... 11.60	Grade N-80	Top, MD (ft... 12.0	MD (ftKB) 6,934.4		
Cement									
Description SURFACE CASING CEMENT					Top Depth (ftKB) 12.0		Bottom Depth (ftKB) 457.0		
Description PRODUCTION CASING CEMENT					Top Depth (ftKB) 2,814.0		Bottom Depth (ftKB) 6,934.4		
Tubing Strings									
Tubing Description Tubing		Run Date 2/22/2006	String... 2 3/8	ID (in)	Wt (lb/ft) 4.70	Grade	Len (ft) 6,801.30	Set De...	
Tubing Components									
Item Des	OD (in)	Wt (lb/ft)	Grade	Jts	Len (ft)	Btm (ftKB)	Btm (TVD) (ftKB)		
Pup Joint	2 3/8	4.70		2	20.00	32.0			
Tubing	2 3/8	4.70		206	6,779.72	6,811.8			
Seal Nipple	2 3/8	1.10			1.00	6,812.8			
Notched collar	2 3/8				0.58	6,813.3			
Perforation Data									
Zone		Bnch/St g	Entered Shot Total	Top (ftKB)		Btm (ftKB)		Date	
NIOBRARA, ORIGINAL HOLE		A	84	6,548.00		6,562.00		1/19/2006	
NIOBRARA, ORIGINAL HOLE		B	72	6,668.00		6,680.00		1/19/2006	
CODELL, ORIGINAL HOLE			44	6,834.00		6,845.00		12/3/2005	
Stimulations & Treatments									
Date 1/19/2006	Zone CODELL, ORIGINAL HOLE			Primary Job Type DRILLING/COMPLETION - ORIGINAL					
Technical Result			Tech Result Details			Tech Result Note			
Comment									
Date 1/19/2006	Zone NIOBRARA, ORIGINAL HOLE			Primary Job Type DRILLING/COMPLETION - ORIGINAL					
Technical Result			Tech Result Details			Tech Result Note			
Comment									

Well Name: ALLES A12-16

VERTICAL - ORIGINAL HOLE, 1/28/2016 11:02:05 AM

Other In Hole

Run Date	Des	OD (in)	Top (ftKB)	Btm (ftKB)
2/16/2015	Stage Tool	2	4,078.0	4,083.0

Logs

Date	Type	Top, MD (ftKB)	Btm, MD (ftKB)
11/25/2005	COMPENSATED DENSITY	3,000.0	6,939.0
11/25/2005	INDUCTION	457.0	6,959.0
12/3/2005	CBL/CCL/GR	2,700.0	6,897.0
2/16/2015	GYRO	10.0	6,700.0

