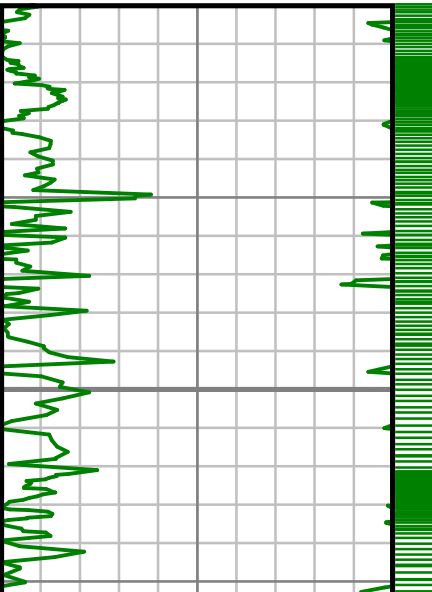

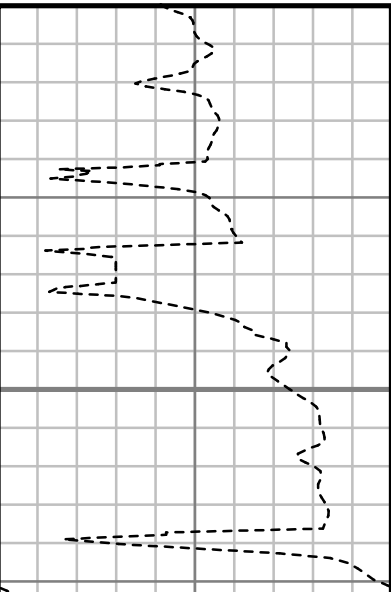
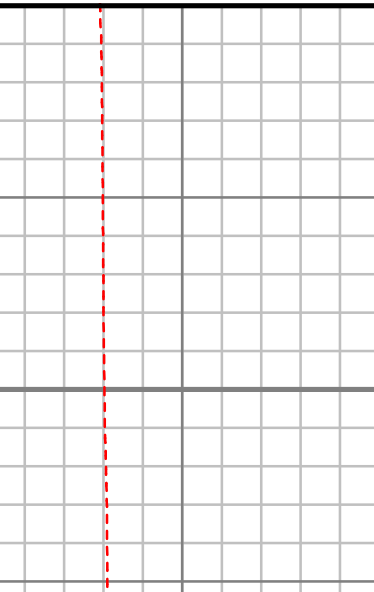
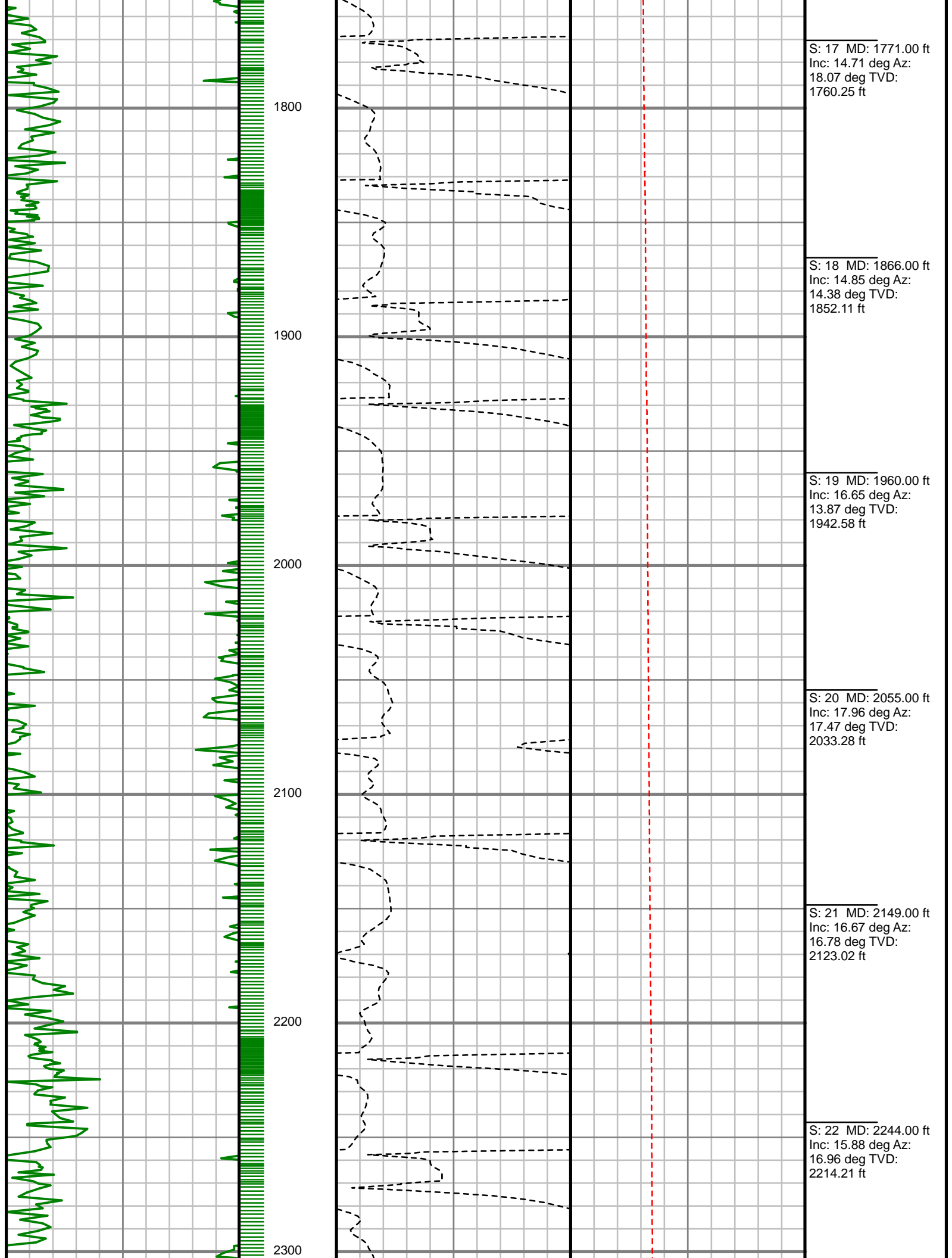
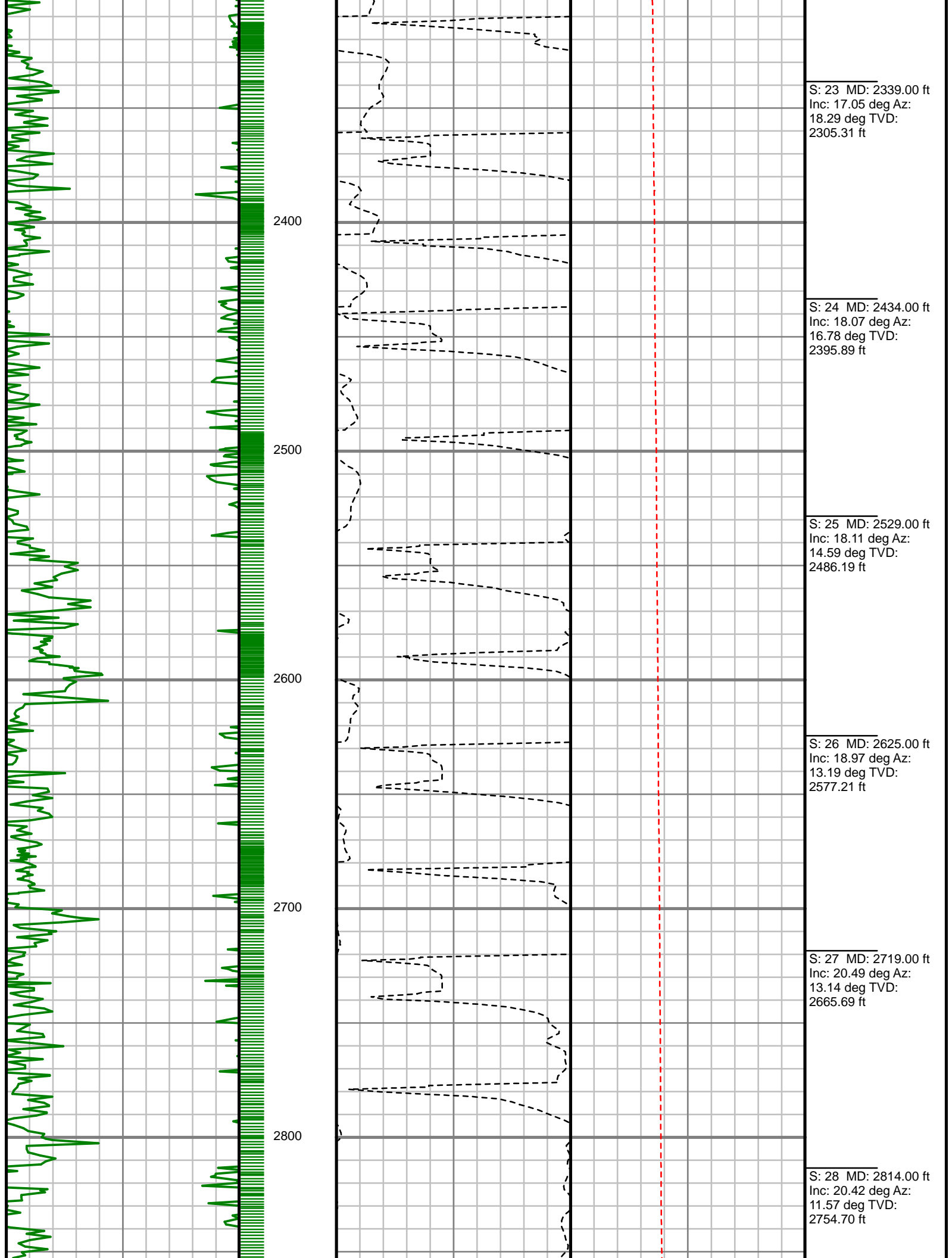


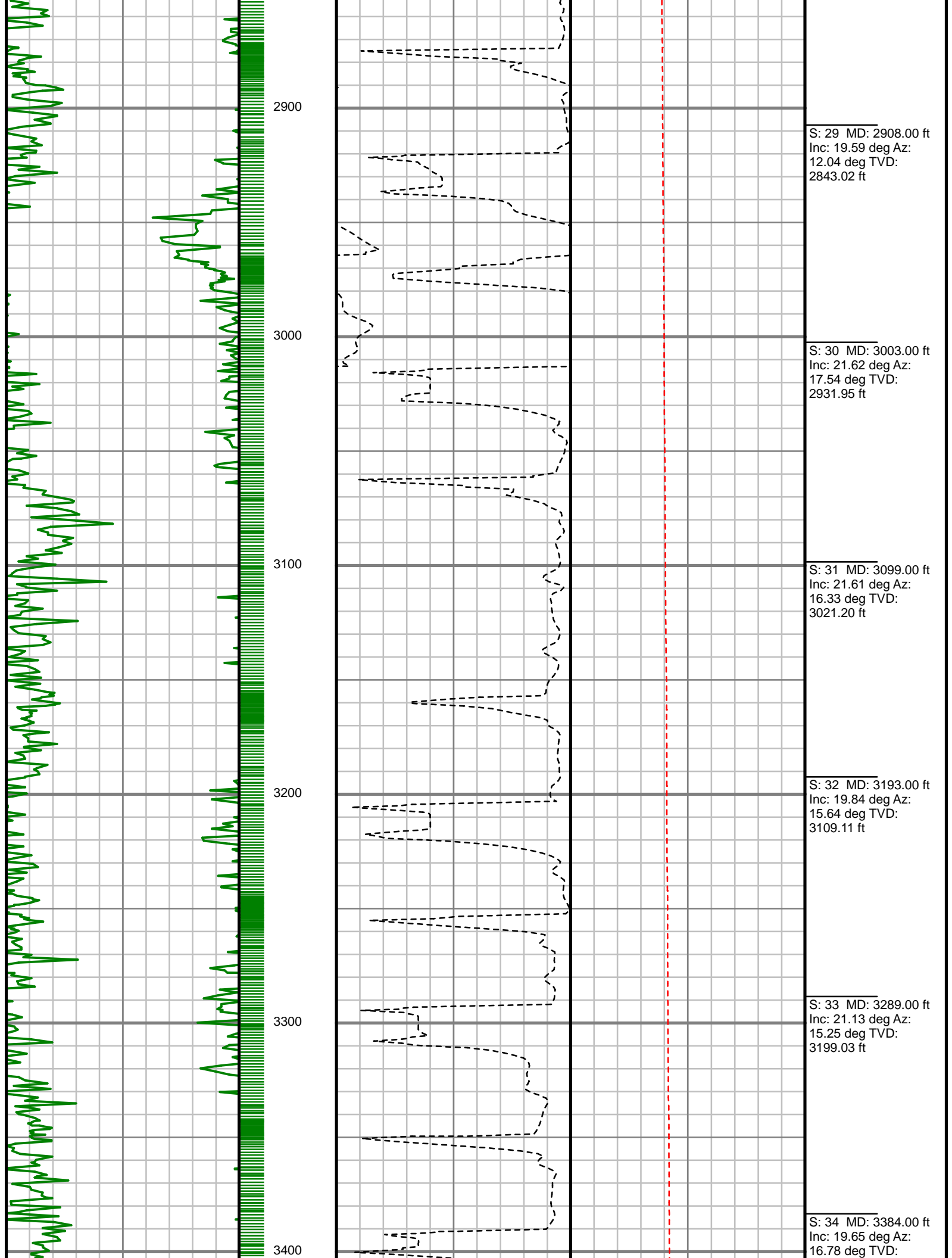
[illegible]

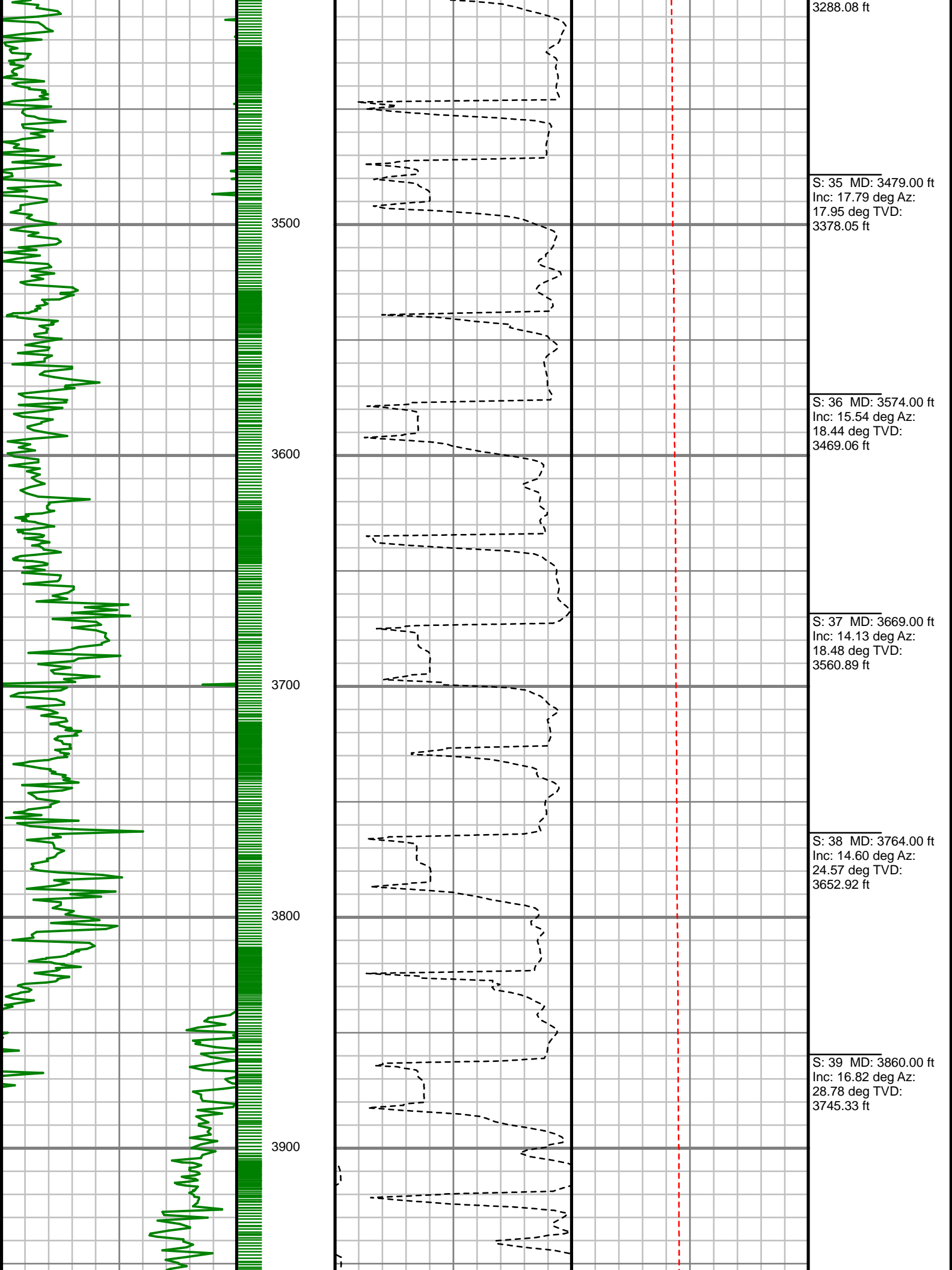
All interpretations are opinions based on inferences from electrical or other measurements and we cannot, and do not guarantee the accuracy or correctness of any interpretations, and we shall not, except in the case of gross or willful negligence on our part, be liable or responsible for any loss, costs, damages or expenses incurred or sustained by anyone resulting from any interpretation made by any of our officers, agents or employees. These interpretations are also subject to our general terms and conditions as set out in our current price schedule.

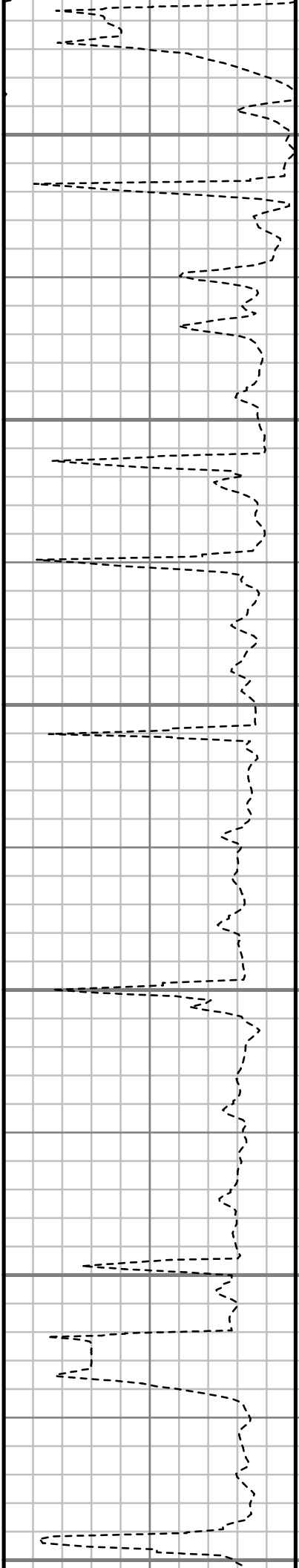
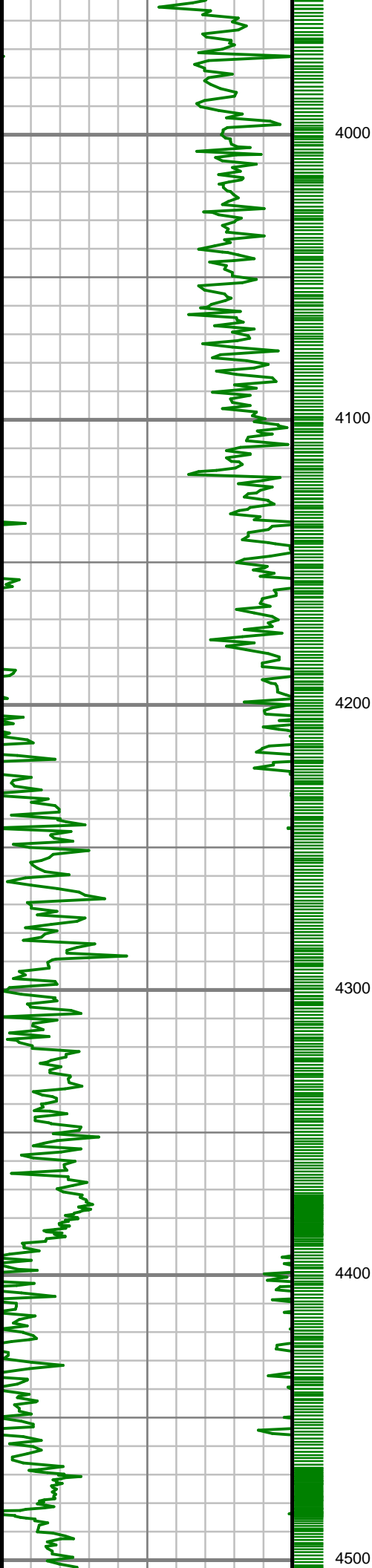
EXTRACTION OIL & GAS JANSSEN 5 PRODUCTION WATTENBERG FIELD WELD COUNTY, COLORADO API # 05-123-42362-00				
Gamma Ray (GR) 150 Unit = aapi 300	MEASURED DEPTH 1:600 (ft)	Rate of Penetration (ROP) 0 Unit = ft/hr 1000	Tool Temperature (T-TEMP) 0 Unit = °F 300	Comments
				S: 16 MD: 1677.00 ft Inc: 13.59 deg Az: 21.67 deg TVD: 1669.11 ft











S: 40 MD: 3955.00 ft
Inc: 21.03 deg Az:
25.09 deg TVD:
3835.18 ft

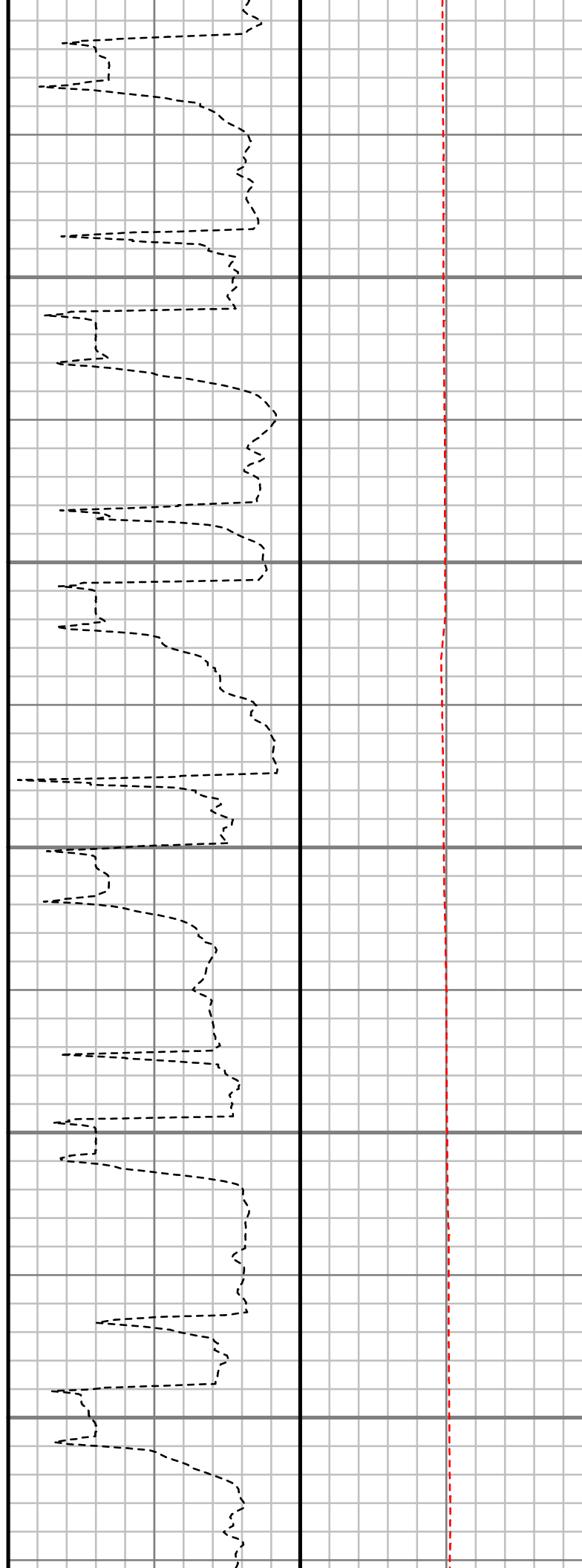
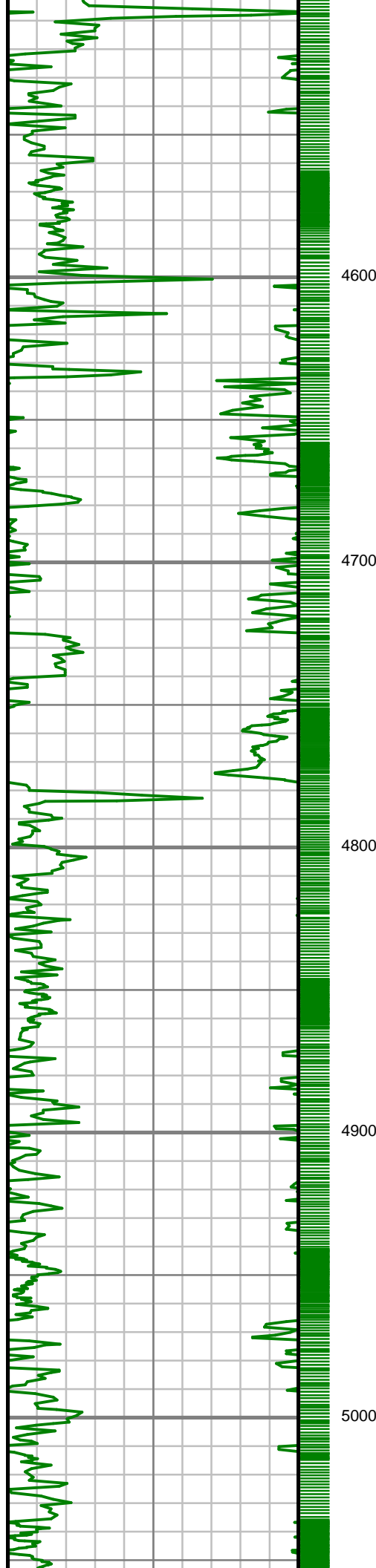
S: 41 MD: 4050.00 ft
Inc: 22.76 deg Az:
23.20 deg TVD:
3923.32 ft

S: 42 MD: 4146.00 ft
Inc: 22.83 deg Az:
22.55 deg TVD:
4011.82 ft

S: 43 MD: 4240.00 ft
Inc: 22.43 deg Az:
21.65 deg TVD:
4098.59 ft

S: 44 MD: 4336.00 ft
Inc: 19.51 deg Az:
20.42 deg TVD:
4188.22 ft

S: 45 MD: 4431.00 ft
Inc: 18.40 deg Az:
18.80 deg TVD:
4278.07 ft



S: 46 MD: 4527.00 ft
Inc: 17.64 deg Az:
18.01 deg TVD:
4369.36 ft

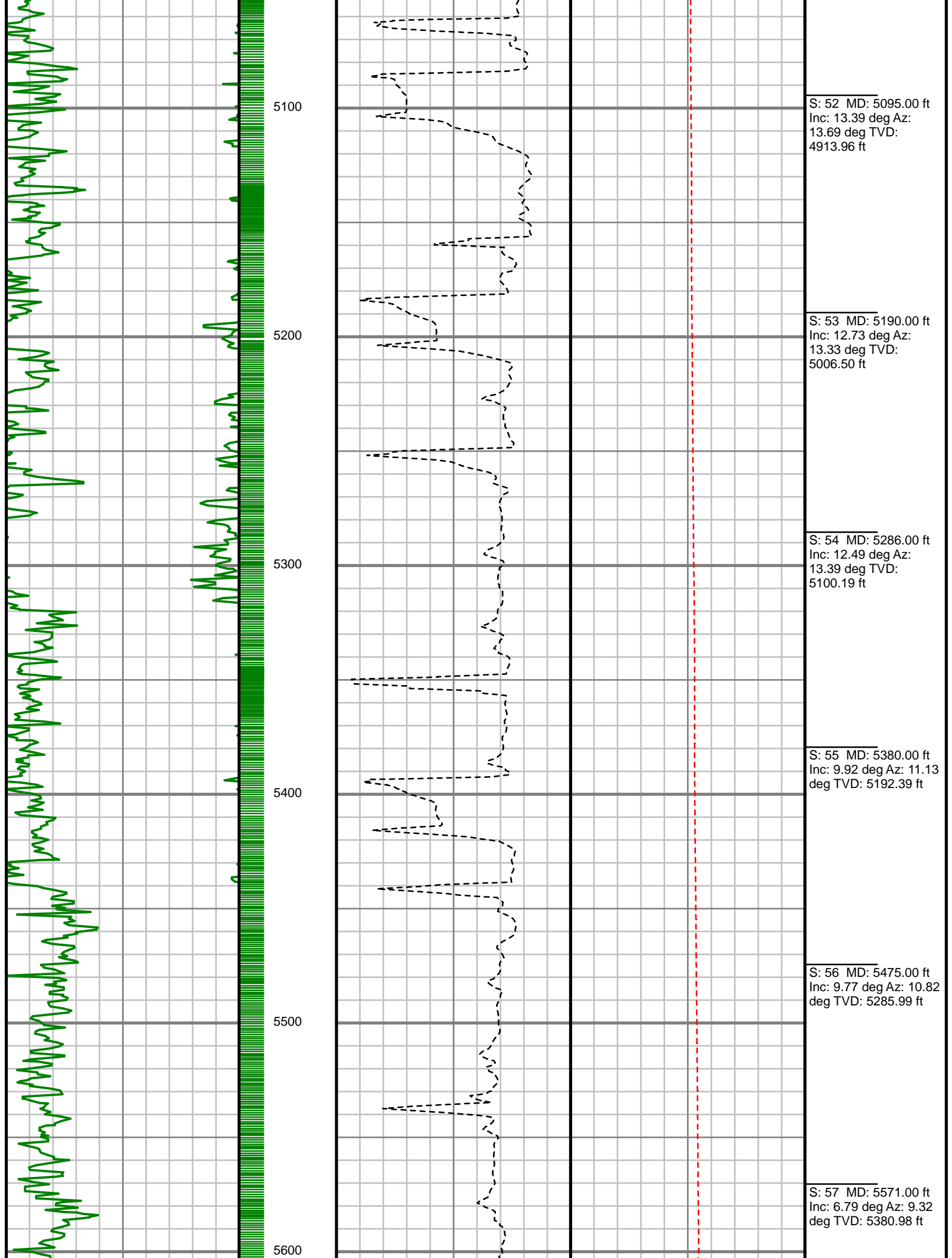
S: 47 MD: 4622.00 ft
Inc: 17.77 deg Az:
16.14 deg TVD:
4459.86 ft

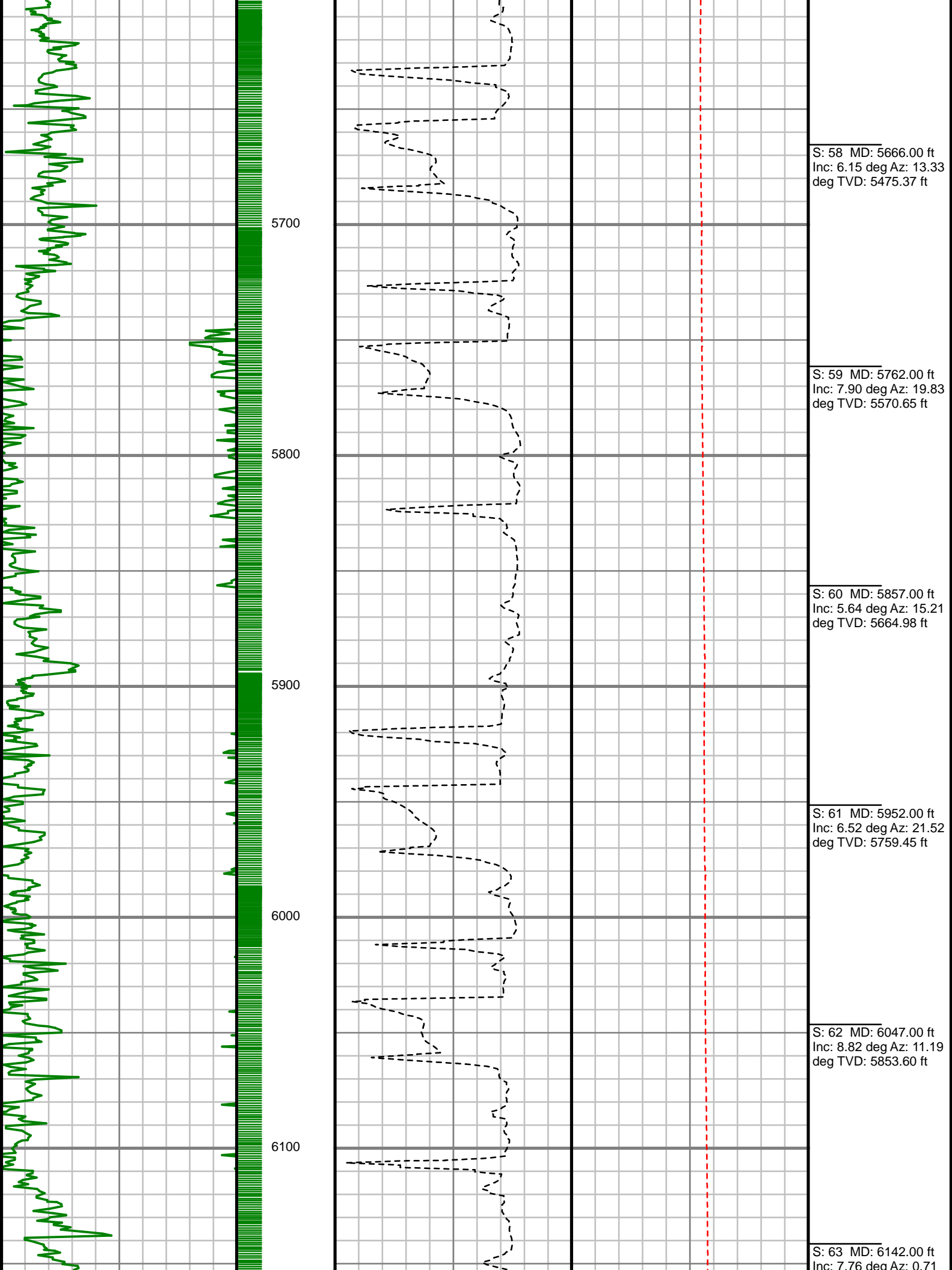
S: 48 MD: 4716.00 ft
Inc: 17.07 deg Az:
15.76 deg TVD:
4549.55 ft

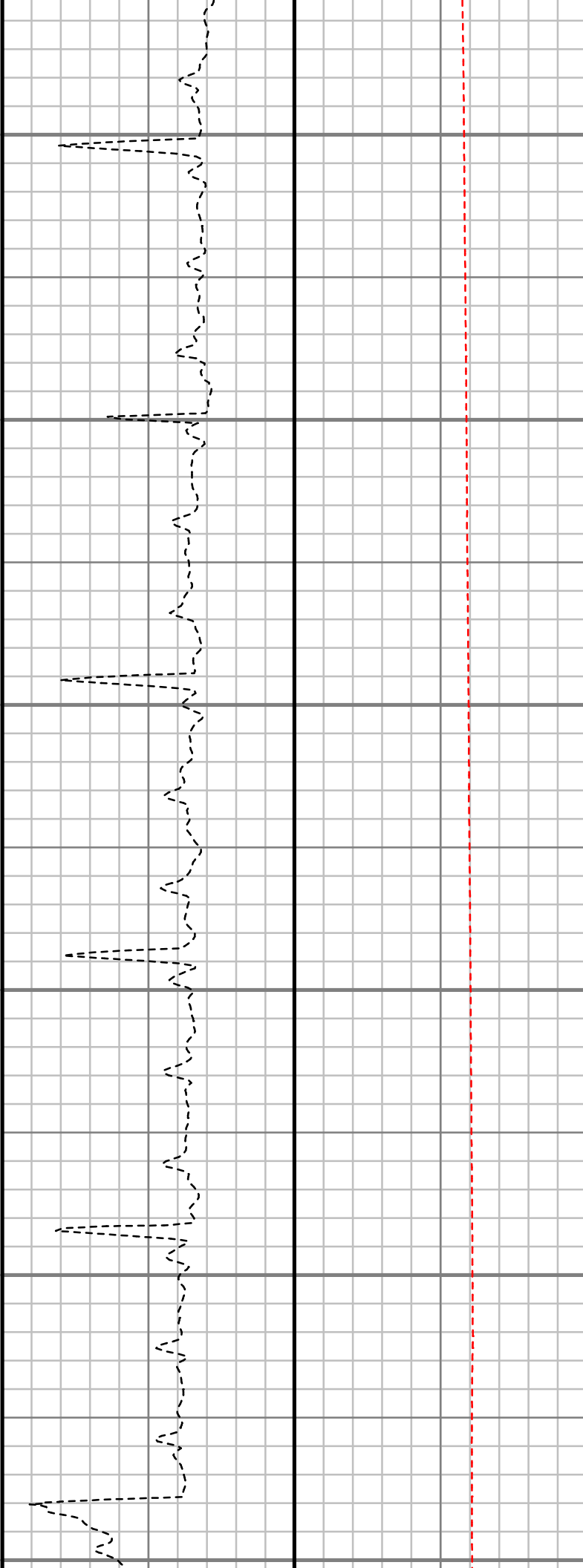
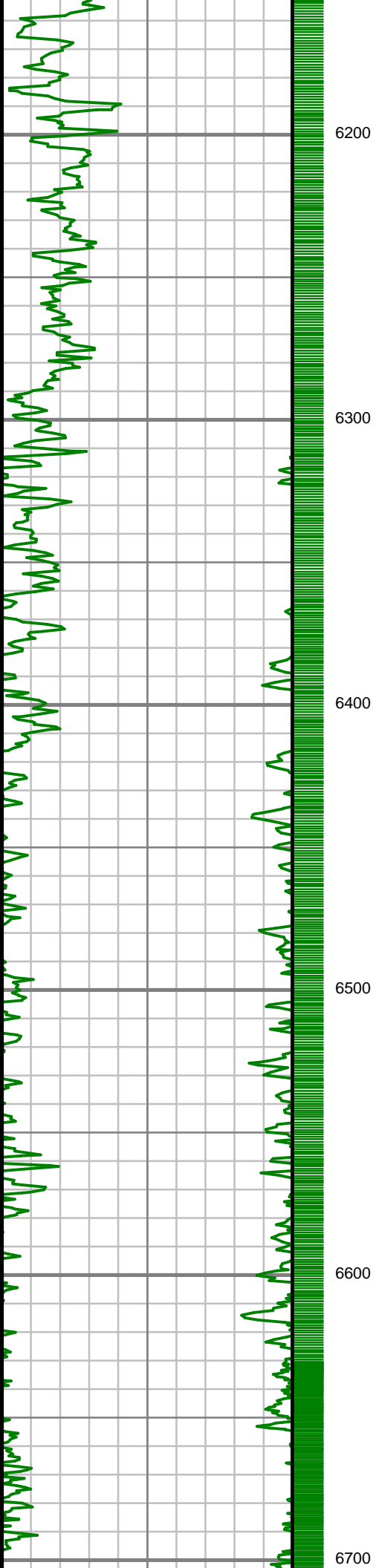
S: 49 MD: 4811.00 ft
Inc: 18.43 deg Az:
16.02 deg TVD:
4640.03 ft

S: 50 MD: 4906.00 ft
Inc: 15.72 deg Az:
12.47 deg TVD:
4730.83 ft

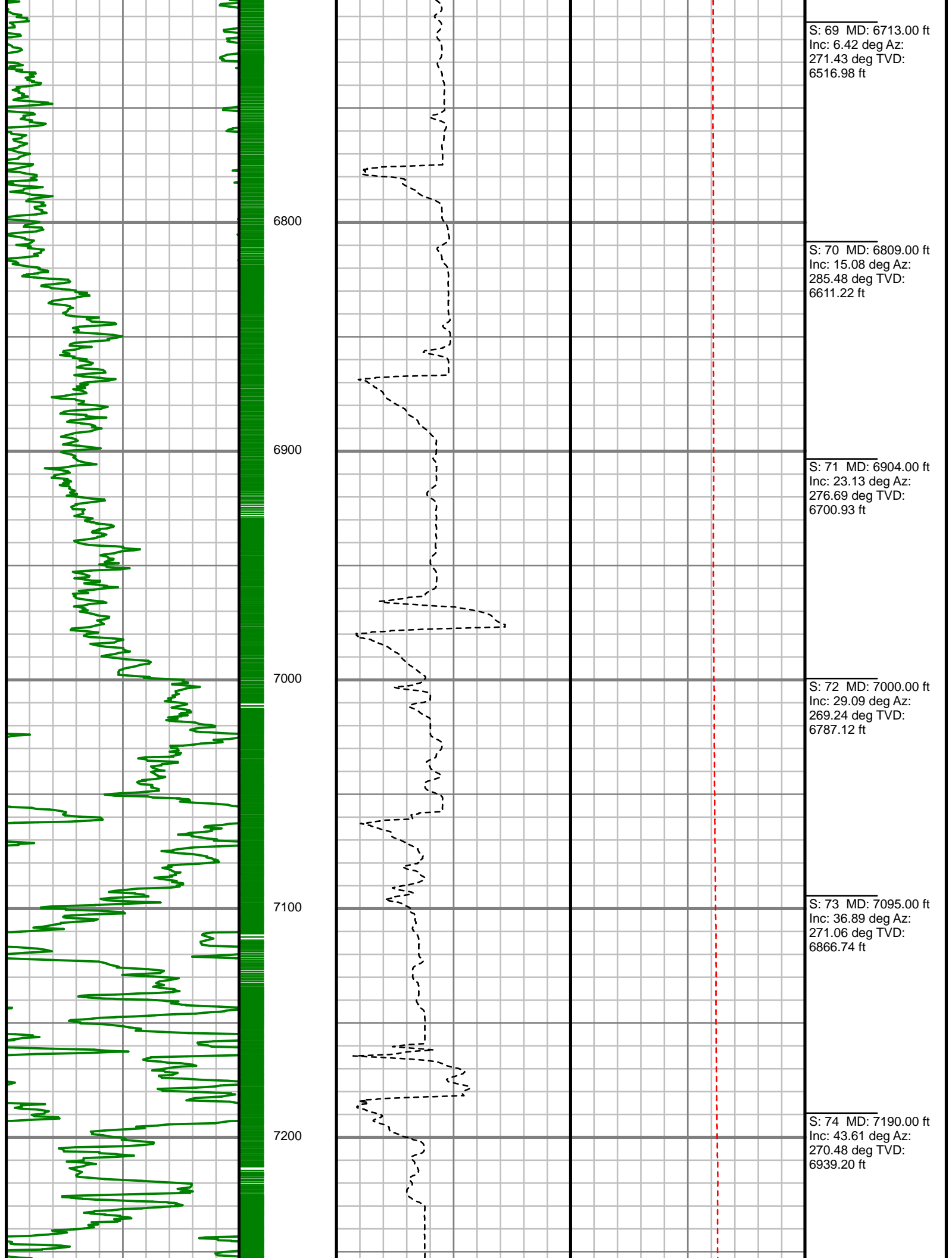
S: 51 MD: 5000.00 ft
Inc: 14.06 deg Az:
14.91 deg TVD:
4821.67 ft

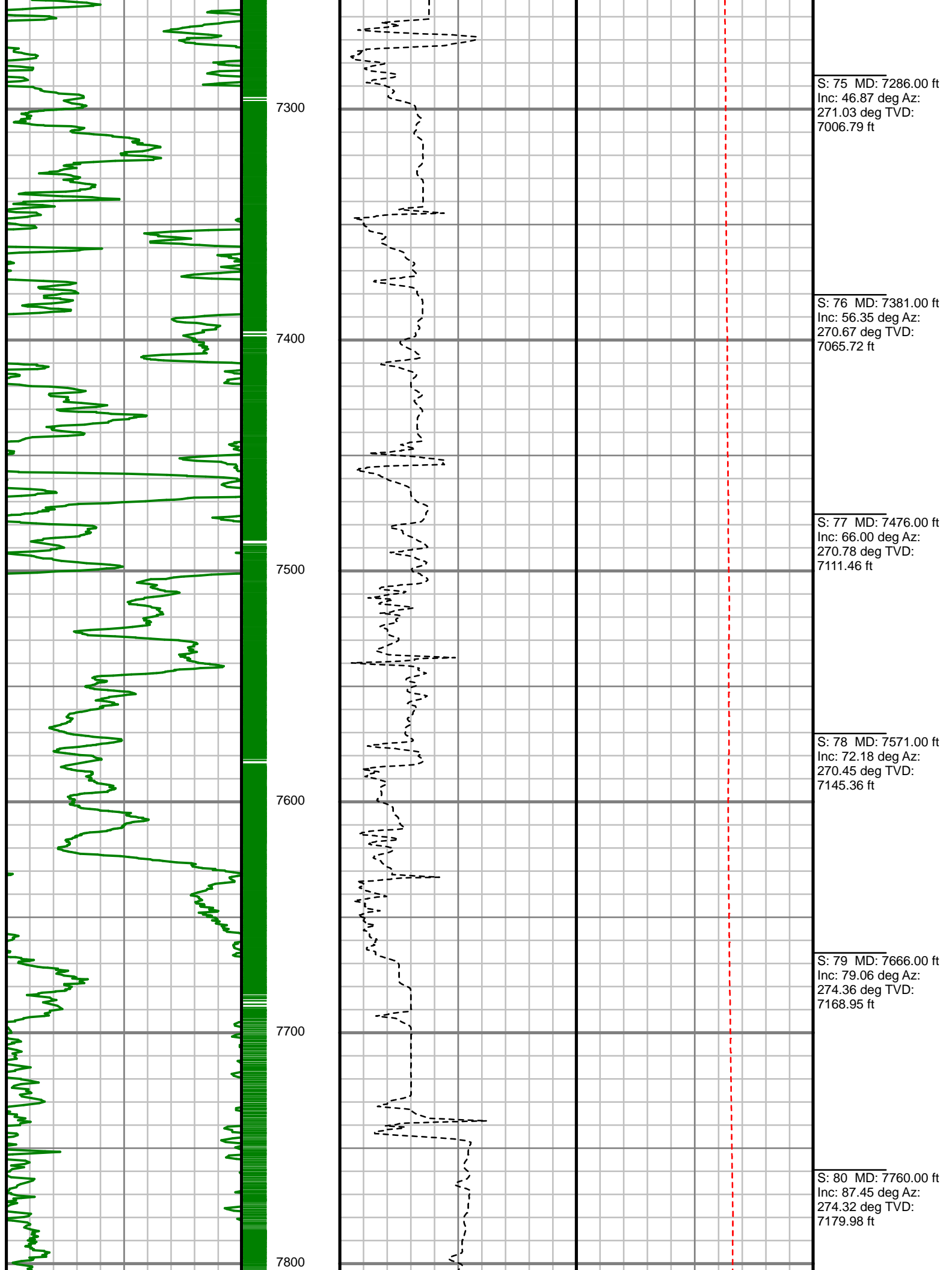


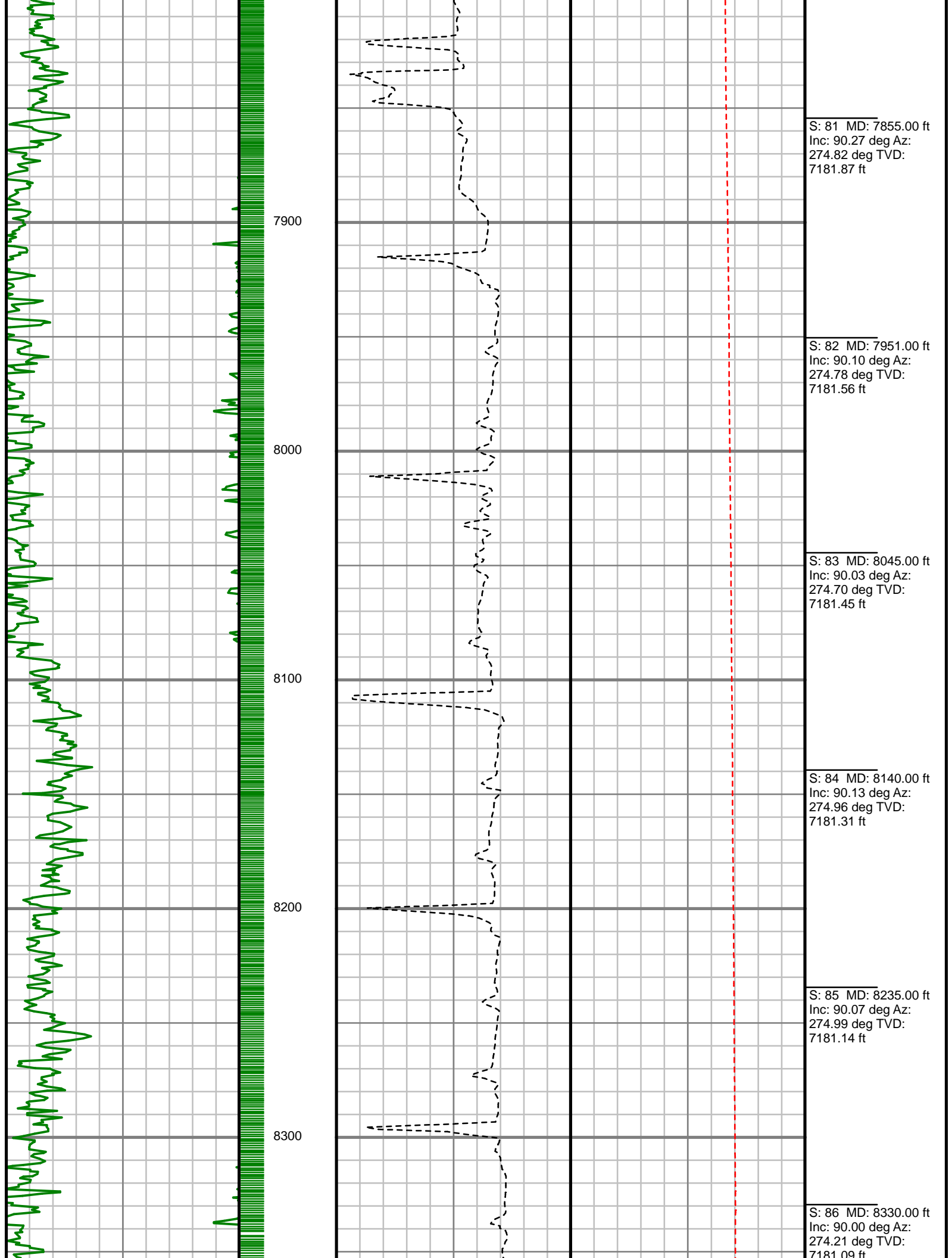


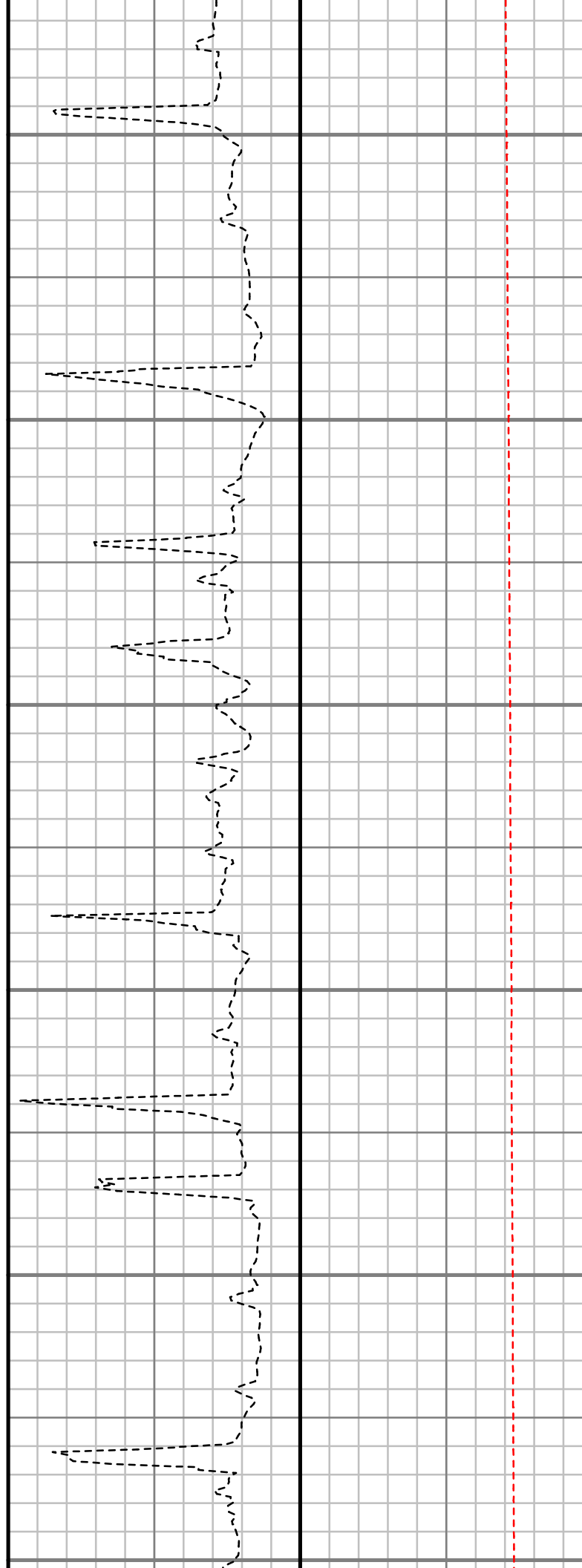
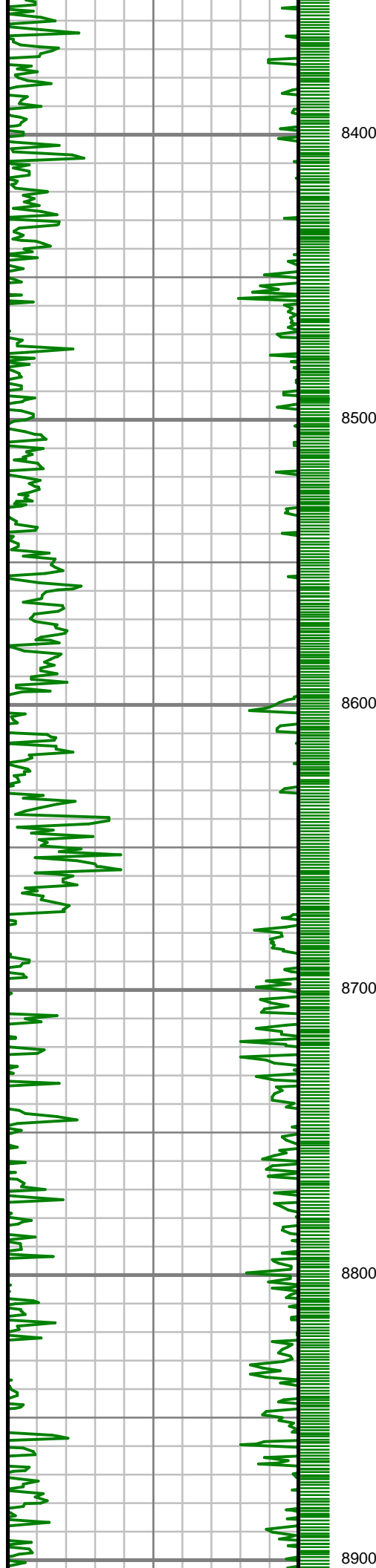


deg TVD: 5947.61 ft
S: 64 MD: 6236.00 ft Inc: 5.50 deg Az: 351.13 deg TVD: 6040.98 ft
S: 65 MD: 6332.00 ft Inc: 4.36 deg Az: 345.93 deg TVD: 6136.62 ft
S: 66 MD: 6427.00 ft Inc: 3.36 deg Az: 345.07 deg TVD: 6231.40 ft
S: 67 MD: 6522.00 ft Inc: 2.52 deg Az: 334.22 deg TVD: 6326.28 ft
S: 68 MD: 6618.00 ft Inc: 1.55 deg Az: 321.68 deg TVD: 6422.22 ft









S: 87 MD: 8424.00 ft
Inc: 90.27 deg Az:
274.67 deg TVD:
7180.87 ft

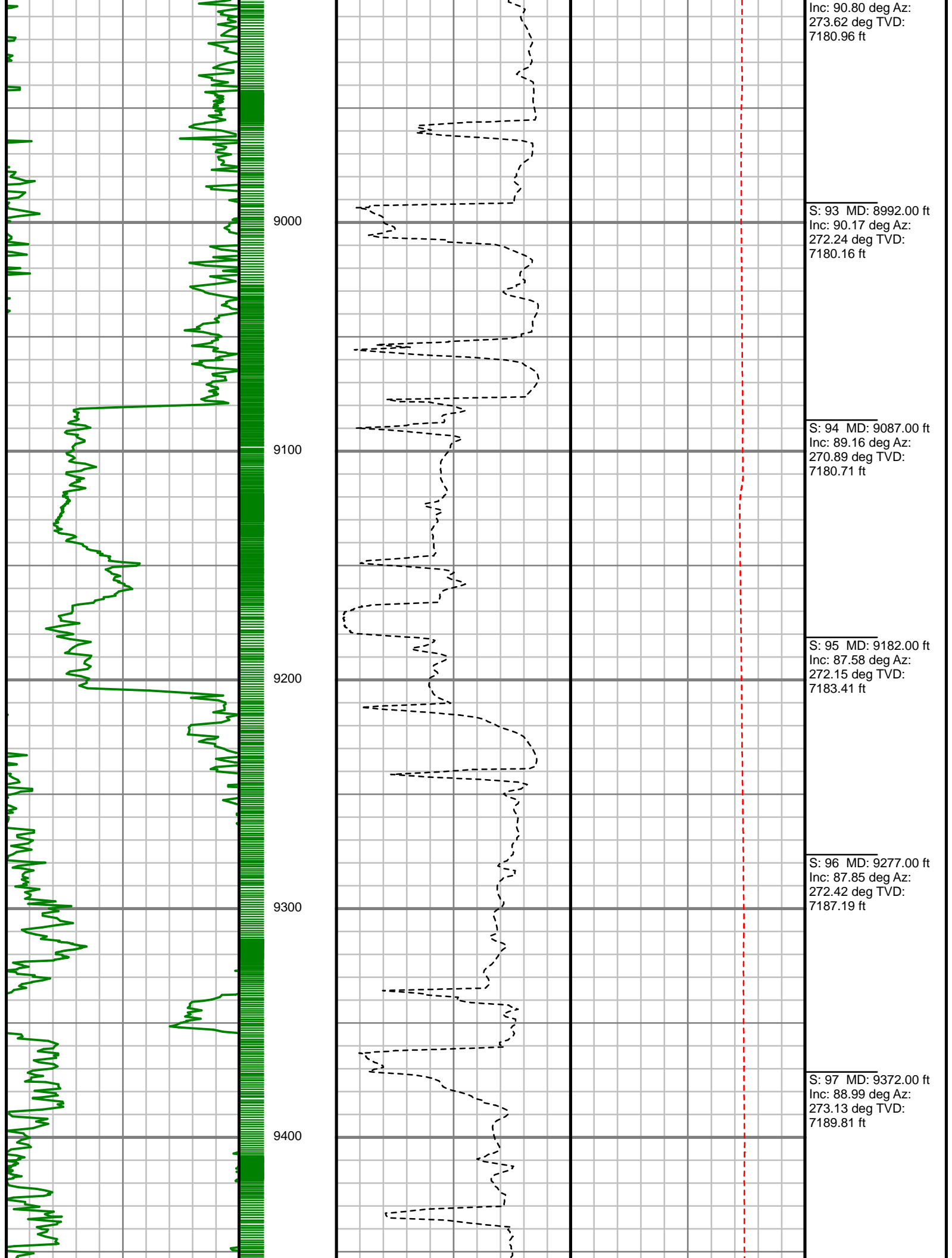
S: 88 MD: 8519.00 ft
Inc: 89.56 deg Az:
274.11 deg TVD:
7181.01 ft

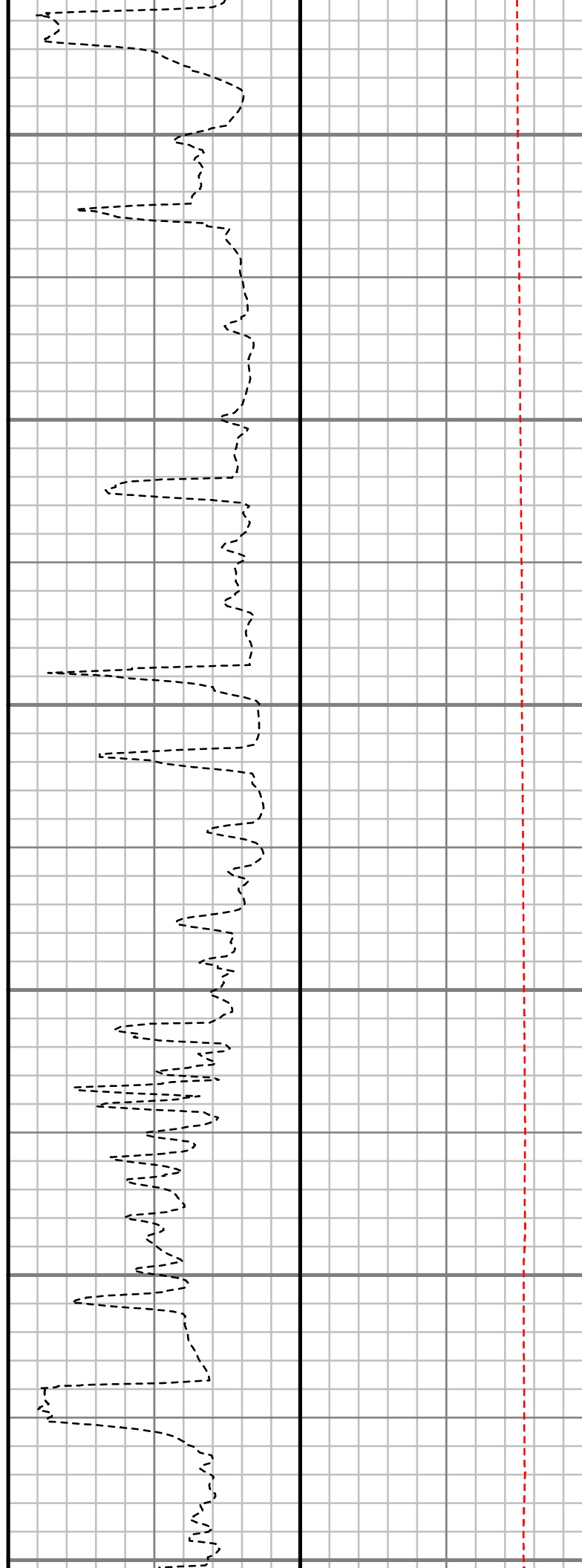
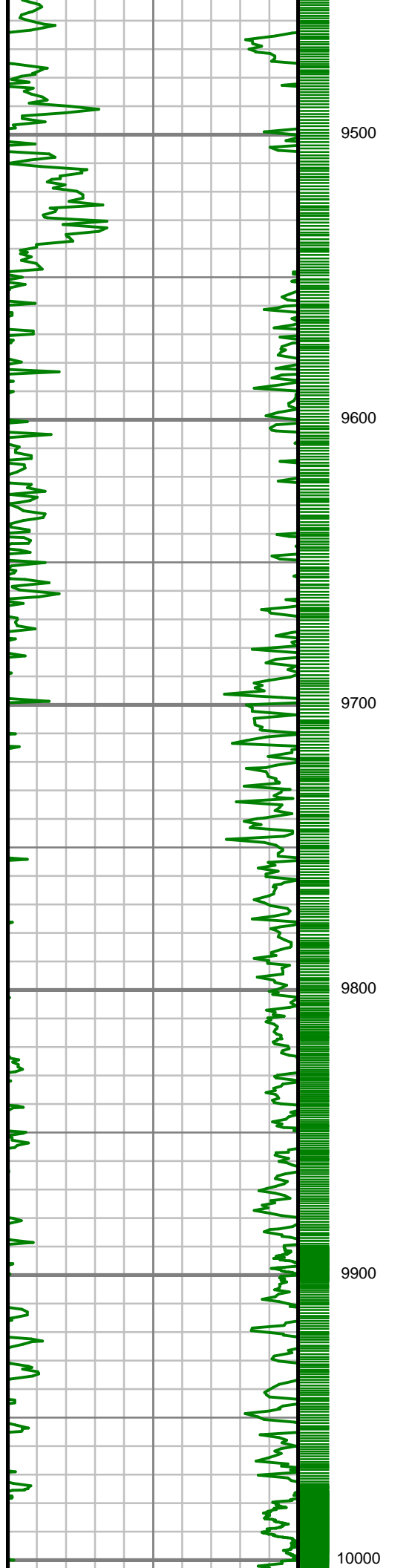
S: 89 MD: 8613.00 ft
Inc: 89.56 deg Az:
273.70 deg TVD:
7181.72 ft

S: 90 MD: 8707.00 ft
Inc: 89.60 deg Az:
273.06 deg TVD:
7182.41 ft

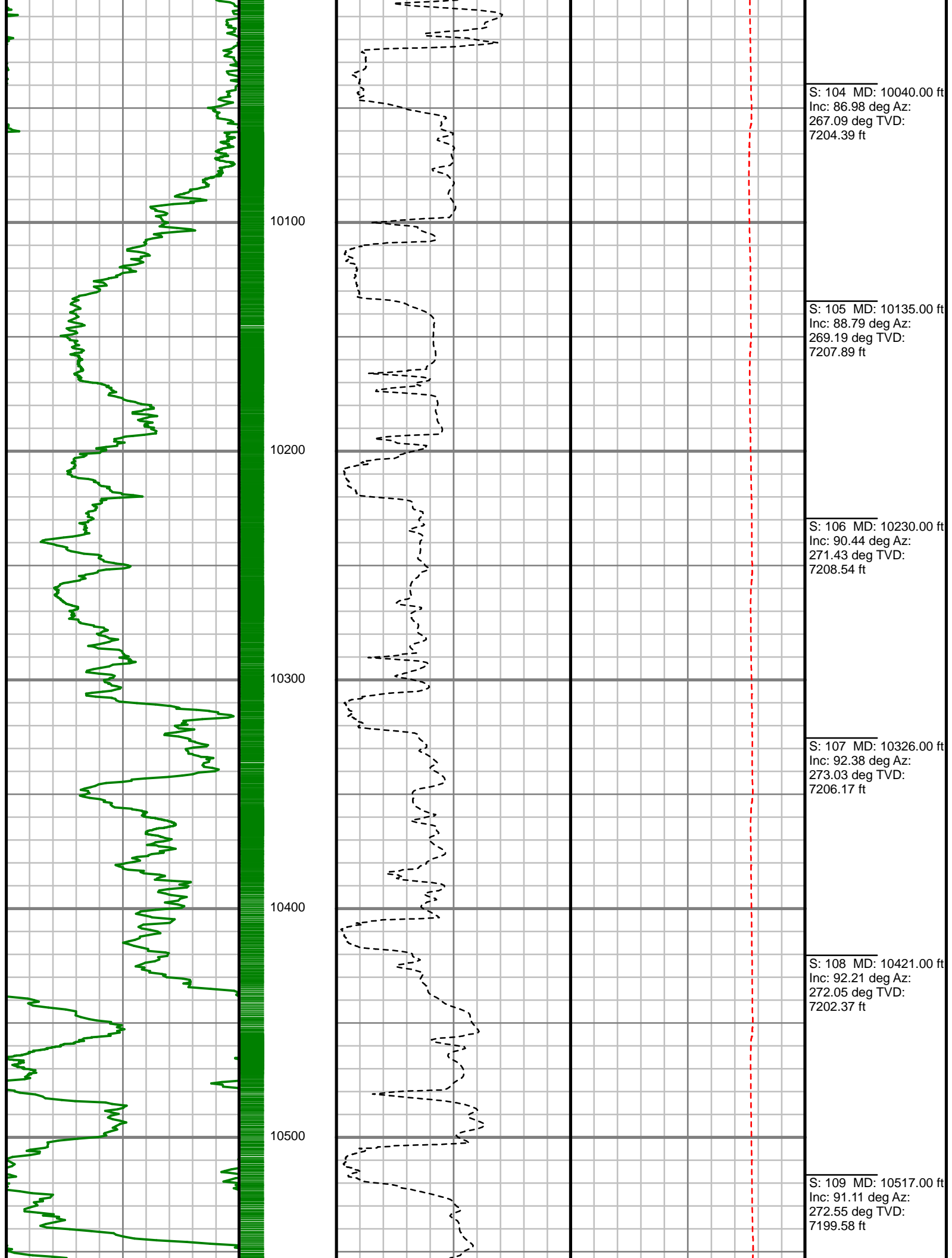
S: 91 MD: 8802.00 ft
Inc: 90.67 deg Az:
273.71 deg TVD:
7182.19 ft

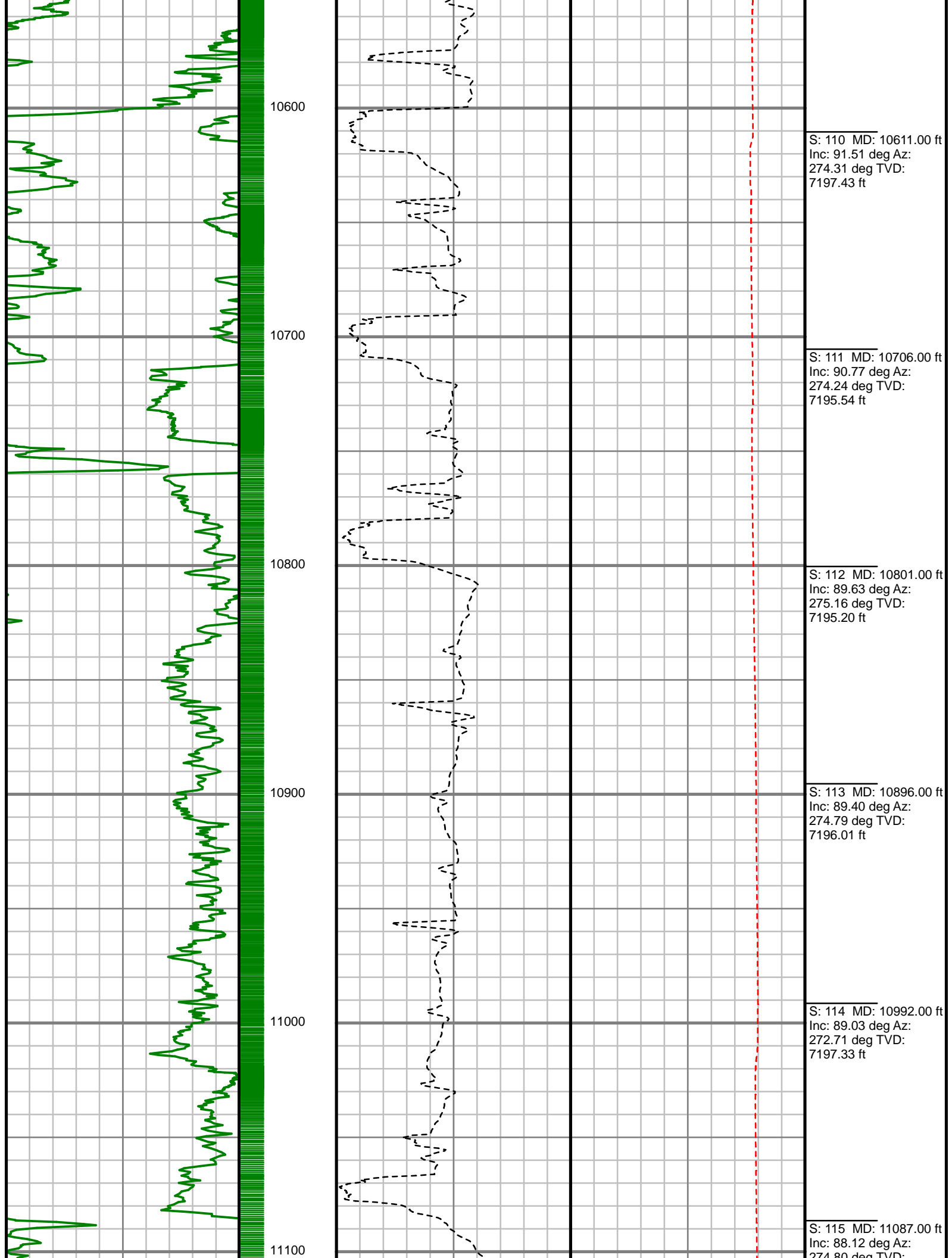
S: 92 MD: 8897.00 ft

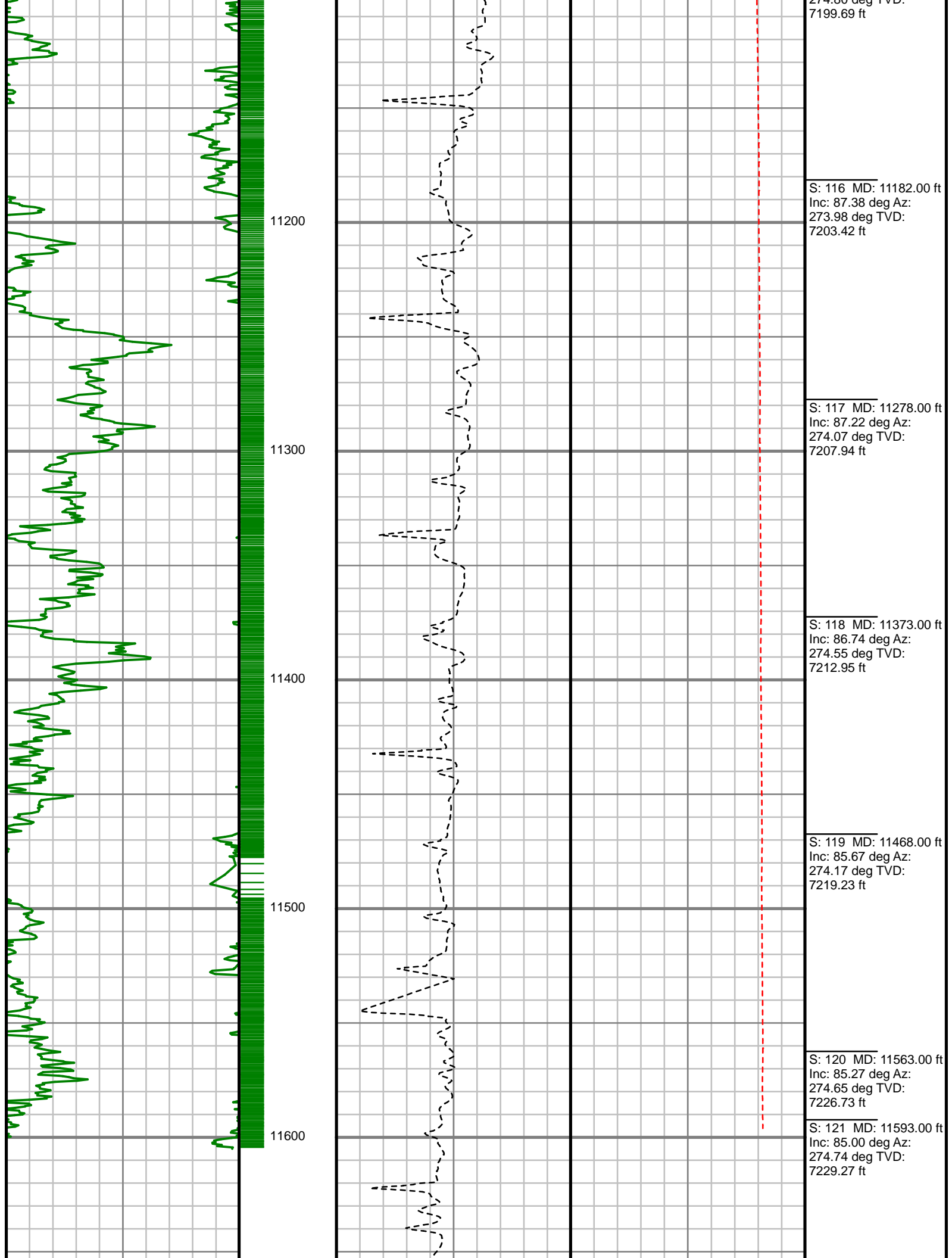




S: 98 MD: 9467.00 ft Inc: 89.53 deg Az: 272.13 deg TVD: 7191.03 ft
S: 99 MD: 9563.00 ft Inc: 89.77 deg Az: 271.52 deg TVD: 7191.62 ft
S: 100 MD: 9658.00 ft Inc: 89.77 deg Az: 271.87 deg TVD: 7192.01 ft
S: 101 MD: 9754.00 ft Inc: 89.56 deg Az: 271.44 deg TVD: 7192.57 ft
S: 102 MD: 9849.00 ft Inc: 88.12 deg Az: 269.85 deg TVD: 7194.49 ft
S: 103 MD: 9944.00 ft Inc: 86.51 deg Az: 267.81 deg TVD: 7198.94 ft







Gamma Ray (GR)		
0	Unit = aapi	150

MEASURED DEPTH
1:600 (ft)

Rate of Penetration (ROP)		Tool Temperature (T-TEMP)	Comments
0	Unit = ft/hr	1000	
0	Unit = °F	300	

MWD Survey Report

Well Location	JANSSEN
Well Name	JANSSEN 5 PRODUCTION
Survey Date	12/21/2015
Latitude	40°30'11.120"N
Longitude	104°41'17.776"W
Btotal	52628 nT
Dip	67.05 deg
Magnetic Declination	8.48 deg
North Reference	True North
Grid Correction	None
Depth Reference	RKB (24.50 ft)
Calculation Method	Minimum Curvature
Section (VS) Ref	0.00N (ft), 0.00E (ft), 273.05Azim (deg)
Operator(s)	

Well Notes

MD ft	Inc deg	Azim deg	TVD ft	VS ft	+N/-S ft	+E/-W ft	DLS °/100ft
0.00	0.00	0.00	0.00	0.00	0.00	0.00	Invalid
203.00	1.08	268.66	202.99	1.91	-0.04	-1.91	0.53
295.00	1.38	271.42	294.97	3.88	-0.04	-3.89	0.33
387.00	1.30	274.01	386.94	6.03	0.06	-6.04	0.11
479.00	1.16	283.62	478.92	7.99	0.36	-7.98	0.27
573.00	1.24	302.91	572.90	9.81	1.13	-9.76	0.44
668.00	0.35	325.78	667.89	10.87	1.93	-10.79	0.98
762.00	1.01	128.97	761.89	10.38	1.65	-10.30	1.43
856.00	0.85	129.25	855.87	9.14	0.68	-9.12	0.17
950.00	1.32	71.56	949.86	7.57	0.59	-7.55	1.20
1045.00	2.70	53.05	1044.80	4.84	2.28	-4.73	1.59
1139.00	3.82	37.33	1138.65	1.38	6.10	-1.06	1.51
1234.00	5.53	26.06	1233.33	-2.19	12.73	2.87	2.03
1329.00	7.93	26.45	1327.67	-6.58	22.71	7.80	2.53
1424.00	9.78	23.74	1421.53	-12.04	35.96	13.97	2.00
1519.00	11.52	22.98	1514.89	-18.12	52.08	20.92	1.84
1677.00	13.59	21.67	1669.11	-29.43	83.86	33.94	1.32
1771.00	14.71	18.07	1760.25	-36.05	105.47	41.72	1.51
1866.00	14.85	14.38	1852.11	-41.56	128.73	48.48	1.00
1960.00	16.65	13.87	1942.58	-46.46	153.48	54.70	1.92

MD ft	Inc deg	Azim deg	TVD ft	VS ft	+N/-S ft	+E/-W ft	DLS °/100ft
2055.00	17.96	17.47	2033.28	-52.66	180.67	62.36	1.78
2149.00	16.67	16.78	2123.02	-59.47	207.40	70.60	1.40
2244.00	15.88	16.96	2214.21	-65.83	232.88	78.33	0.83
2339.00	17.05	18.29	2305.31	-72.61	258.53	86.49	1.29
2434.00	18.07	16.78	2395.89	-79.77	285.86	95.12	1.17
2529.00	18.11	14.59	2486.19	-86.22	314.25	103.09	0.72
2625.00	18.97	13.19	2577.21	-91.95	343.89	110.41	1.01
2719.00	20.49	13.14	2665.69	-97.53	374.79	117.64	1.62
2814.00	20.42	11.57	2754.70	-102.90	407.22	124.74	0.58
2908.00	19.59	12.04	2843.02	-107.79	438.70	131.32	0.90
3003.00	21.62	17.54	2931.95	-114.66	470.98	139.92	2.95
3099.00	21.61	16.33	3021.20	-123.15	504.81	150.22	0.46
3193.00	19.84	15.64	3109.11	-130.61	536.79	159.39	1.90
3289.00	21.13	15.25	3199.03	-137.82	569.17	168.34	1.35
3384.00	19.65	16.78	3288.08	-145.23	600.99	177.46	1.66
3479.00	17.79	17.95	3378.05	-152.75	630.09	186.54	2.00
3574.00	15.54	18.44	3469.06	-159.86	655.97	195.04	2.37
3669.00	14.13	18.48	3560.89	-166.33	679.04	202.74	1.48
3764.00	14.60	24.57	3652.92	-173.81	700.93	211.40	1.67
3860.00	16.82	28.78	3745.33	-184.28	724.11	223.12	2.59

MD ft	Inc deg	Azim deg	TVD ft	VS ft	+N/-S ft	+E/-W ft	DLS °/100ft
3955.00	21.03	25.09	3835.18	-196.64	751.61	236.97	4.60
4050.00	22.76	23.20	3923.32	-209.37	783.94	251.44	1.97
4146.00	22.83	22.55	4011.82	-221.99	818.22	265.90	0.27
4240.00	22.43	21.65	4098.59	-233.80	851.73	279.51	0.57
4336.00	19.51	20.42	4188.22	-244.43	883.77	291.86	3.08
4431.00	18.40	18.80	4278.07	-253.23	912.83	302.23	1.29
4527.00	17.64	18.01	4369.36	-261.10	941.00	311.61	0.83
4622.00	17.77	16.14	4459.86	-268.10	968.62	320.09	0.61
4716.00	17.07	15.76	4549.55	-274.38	995.67	327.82	0.75
4811.00	18.43	16.02	4640.03	-280.82	1023.53	335.75	1.43
4906.00	15.72	12.47	4730.83	-286.30	1050.54	342.68	3.05
5000.00	14.06	14.91	4821.67	-290.73	1074.01	348.37	1.89
5095.00	13.39	13.69	4913.96	-295.13	1095.85	353.94	0.76
5190.00	12.73	13.33	5006.50	-299.03	1116.72	358.96	0.71
5286.00	12.49	13.39	5100.19	-302.78	1137.11	363.80	0.25
5380.00	9.92	11.13	5192.39	-305.74	1154.94	367.71	2.77
5475.00	9.77	10.82	5285.99	-307.98	1170.89	370.81	0.16
5571.00	6.79	9.32	5380.98	-309.70	1184.49	373.26	3.11
5666.00	6.15	13.33	5475.37	-311.23	1194.99	375.34	0.83
5762.00	7.90	19.83	5570.65	-314.05	1206.20	378.76	1.99

MD ft	Inc deg	Azim deg	TVD ft	VS ft	+N/-S ft	+E/-W ft	DLS °/100ft
5857.00	5.64	15.21	5664.98	-316.91	1216.84	382.20	2.44
5952.00	6.52	21.52	5759.45	-319.61	1226.36	385.40	1.17
6047.00	8.82	11.19	5853.60	-322.35	1238.53	388.80	2.81
6142.00	7.76	0.71	5947.61	-323.12	1252.08	390.29	1.93
6236.00	5.50	351.13	6040.98	-321.93	1262.88	389.67	2.67
6332.00	4.36	345.93	6136.62	-319.90	1270.96	388.08	1.27
6427.00	3.36	345.07	6231.40	-317.98	1277.16	386.48	1.06
6522.00	2.52	334.22	6326.28	-316.12	1281.72	384.86	1.06
6618.00	1.55	321.68	6422.22	-314.24	1284.64	383.14	1.11
6713.00	6.42	271.43	6516.98	-308.08	1285.78	377.03	5.85
6809.00	15.08	285.48	6611.22	-290.48	1289.25	359.59	9.36
6904.00	23.13	276.69	6700.93	-259.74	1294.74	329.09	8.97
7000.00	29.09	269.24	6787.12	-217.59	1296.62	286.98	7.08
7095.00	36.89	271.06	6866.74	-165.96	1296.84	235.30	8.28
7190.00	43.61	270.48	6939.20	-104.66	1297.65	173.95	7.08
7286.00	46.87	271.03	7006.79	-36.56	1298.56	105.80	3.41
7381.00	56.35	270.67	7065.72	37.76	1299.64	31.44	9.99
7476.00	66.00	270.78	7111.46	120.82	1300.69	-51.69	10.16
7571.00	72.18	270.45	7145.36	209.44	1301.64	-140.38	6.51
7666.00	79.06	274.36	7168.95	301.38	1305.55	-232.25	8.27

MD ft	Inc deg	Azim deg	TVD ft	VS ft	+N/-S ft	+E/-W ft	DLS °/100ft
7760.00	87.45	274.32	7179.98	394.63	1312.61	-325.25	8.93
7855.00	90.27	274.82	7181.87	489.57	1320.18	-419.92	3.01
7951.00	90.10	274.78	7181.56	585.52	1328.21	-515.58	0.18
8045.00	90.03	274.70	7181.45	679.48	1335.97	-609.26	0.11
8140.00	90.13	274.96	7181.31	774.43	1343.97	-703.92	0.30
8235.00	90.07	274.99	7181.14	869.38	1352.21	-798.56	0.08
8330.00	90.00	274.21	7181.09	964.34	1359.83	-893.26	0.82
8424.00	90.27	274.67	7180.87	1058.32	1367.12	-986.97	0.57
8519.00	89.56	274.11	7181.01	1153.29	1374.39	-1081.69	0.95
8613.00	89.56	273.70	7181.72	1247.27	1380.79	-1175.47	0.43
8707.00	89.60	273.06	7182.41	1341.27	1386.33	-1269.31	0.68
8802.00	90.67	273.71	7182.19	1436.27	1391.94	-1364.14	1.32
8897.00	90.80	273.62	7180.96	1531.25	1398.01	-1458.94	0.17
8992.00	90.17	272.24	7180.16	1626.25	1402.87	-1553.80	1.60
9087.00	89.16	270.89	7180.71	1721.21	1405.47	-1648.76	1.78
9182.00	87.58	272.15	7183.41	1816.13	1407.98	-1743.69	2.13
9277.00	87.85	272.42	7187.19	1911.05	1411.76	-1838.54	0.40
9372.00	88.99	273.13	7189.81	2006.01	1416.36	-1933.39	1.42
9467.00	89.53	272.13	7191.03	2101.00	1420.73	-2028.28	1.19
9563.00	89.77	271.52	7191.62	2196.97	1423.78	-2124.23	0.69

MD ft	Inc deg	Azim deg	TVD ft	VS ft	+N/-S ft	+E/-W ft	DLS °/100ft
9658.00	89.77	271.87	7192.01	2291.95	1426.59	-2219.18	0.38
9754.00	89.56	271.44	7192.57	2387.92	1429.37	-2315.14	0.49
9849.00	88.12	269.85	7194.49	2482.81	1430.44	-2410.11	2.26
9944.00	86.51	267.81	7198.94	2577.44	1428.51	-2504.98	2.74
10040.00	86.98	267.09	7204.39	2672.82	1424.24	-2600.73	0.90
10135.00	88.79	269.19	7207.89	2767.40	1421.16	-2695.60	2.91
10230.00	90.44	271.43	7208.54	2862.28	1421.67	-2790.59	2.93
10326.00	92.38	273.03	7206.17	2958.23	1425.40	-2886.48	2.63
10421.00	92.21	272.05	7202.37	3053.15	1429.61	-2981.31	1.04
10517.00	91.11	272.55	7199.58	3149.10	1433.46	-3077.19	1.26
10611.00	91.51	274.31	7197.43	3243.07	1439.08	-3170.99	1.93
10706.00	90.77	274.24	7195.54	3338.03	1446.16	-3265.71	0.78
10801.00	89.63	275.16	7195.20	3432.99	1453.94	-3360.39	1.54
10896.00	89.40	274.79	7196.01	3527.93	1462.18	-3455.03	0.46
10992.00	89.03	272.71	7197.33	3623.91	1468.45	-3550.81	2.20
11087.00	88.12	274.80	7199.69	3718.87	1474.67	-3645.57	2.41
11182.00	87.38	273.98	7203.42	3813.77	1481.94	-3740.21	1.16
11278.00	87.22	274.07	7207.94	3909.65	1488.66	-3835.87	0.20
11373.00	86.74	274.55	7212.95	4004.49	1495.79	-3930.47	0.71
11468.00	85.67	274.17	7219.23	4099.26	1502.99	-4024.99	1.19

MD ft	Inc deg	Azim deg	TVD ft	VS ft	+N/-S ft	+E/-W ft	DLS °/100ft
11563.00	85.27	274.65	7226.73	4193.93	1510.28	-4119.41	0.66
11593.00	85.00	274.74	7229.27	4223.81	1512.73	-4149.20	0.94

2" = 100' FEET MD