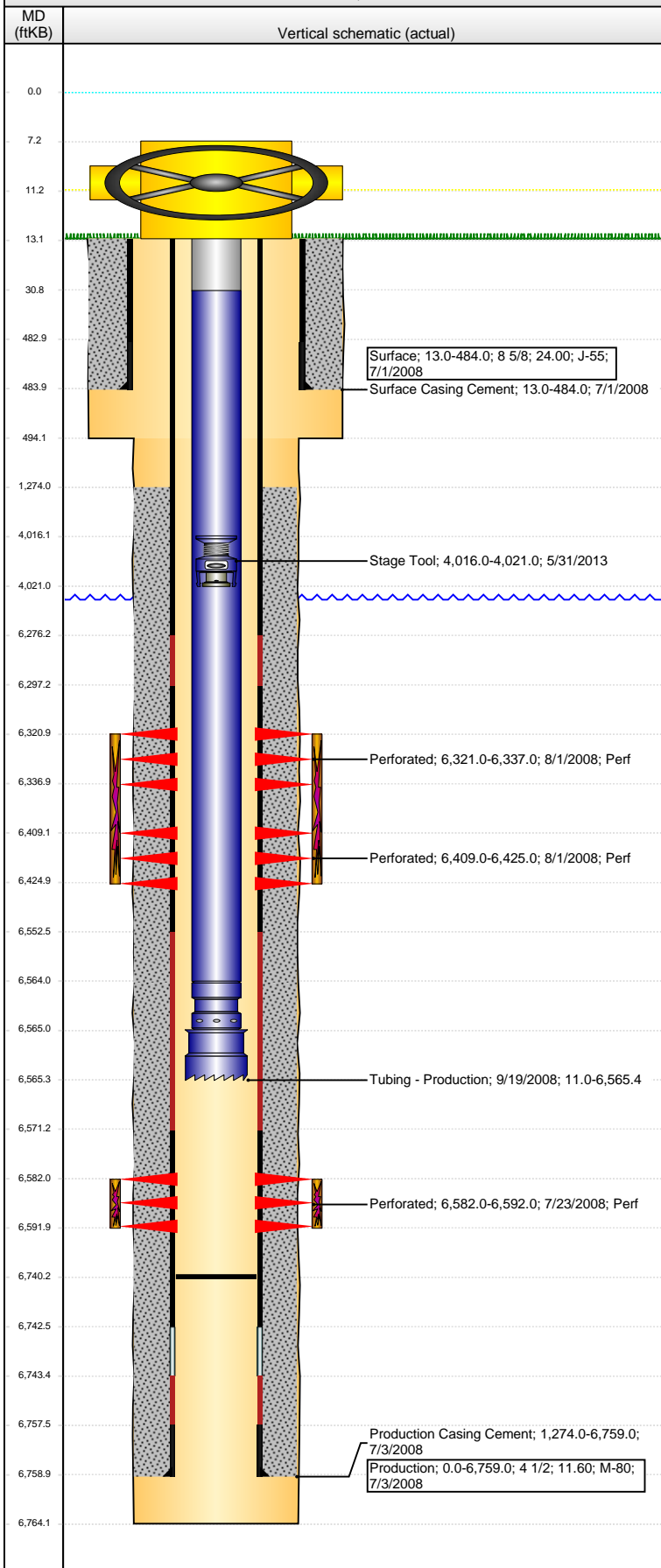


Well Name: WELLS RANCH USX BB01-16

VERTICAL - ORIGINAL HOLE, 1/26/2016 12:19:36 PM



Well Header

API 05-123-26770	Business Unit DJ BASIN	District 15	Well Config VERTICAL
Original KB Elevation (ft) 4,671.00	KB - GL / MSL (ftKB) 13.00	Spud Date 7/1/2008	P & A Date

Comment

Directions To Well

WCR 68 & WCR 67, EAST 0.2 MILE, SOUTH 2.75 MILES TO COW CAMP, EAST 0.1, NORTHEAST 0.1, EAST/SOUTHEAST 2.25 MILE, SOUTH 0.5, SOUTHEAST INTO.

Congressional Location

Quarter 1	Quarter 2	Quarter 3	Quarter 4	Section	Township	Twnshp N...	Range	Rng E/W Dir
		SE	SE	1	5	N	63	W

Bottom Hole Location

North-South Distance (ft)	From N or S Line	East-West Distance (ft)	From E or W Line

Plug Back Total Depths

Date	Depth (ftKB)	Method	Com
7/3/2008	6,743.5	CASING TALLY	
9/18/2008	6,740.0	TUBING TALLY	DRILL CIFTF W/ SHOE AND CHASE DOWN TO 67...

Wellbore Sections

Section Des	Size (in)	Act Top, MD (ftKB)	Act Btm, MD (ftKB)
SURFACE	12 1/4	13.0	494.0
PRODUCTION	7 7/8	494.0	6,764.0

Zone Statuses

Zone Name	Status Date	Status	Fluid Type	Job	Prod Method
NIOBRARA	8/3/2008	PR		DRILLING/CO...	
CODELL	8/3/2008	PR		DRILLING/CO...	

Casing Strings

Surface, 484.0ftKB

Casing Description	Run Date	OD (in)	Wt/Len (l...	Grade	Top, MD (ft...	MD (ftKB)
Surface	7/1/2008	8 5/8	24.00	J-55	13.0	484.0

Production, 6,759.0ftKB

Casing Description	Run Date	OD (in)	Wt/Len (l...	Grade	Top, MD (ft...	MD (ftKB)
Production	7/3/2008	4 1/2	11.60	M-80	0.0	6,759.0

Cement

Description	Top Depth (ftKB)	Bottom Depth (ftKB)
Surface Casing Cement	13.0	484.0
Production Casing Cement	1,274.0	6,759.0

Tubing Strings

Tubing Description	Run Date	String...	ID (in)	Wt (lb/ft)	Grade	Len (ft)	Set De...
Tubing - Production	9/19/2008	2 3/8	1.995	4.70	J-55	6,554.36	

Tubing Components

Item Des	OD (in)	Wt (lb/ft)	Grade	Jts	Len (ft)	Btm (ftKB)	Btm (TVD) (ftKB)
Tubing Pup Joint	2 3/8	4.70	J-55	2	20.00	31.0	
Tubing	2 3/8	4.70	J-55	210	6,532.86	6,563.9	
Pump Seating Nipple	2 3/8			1	1.10	6,565.0	
Notched collar	3 1/16			1	0.40	6,565.4	

Perforation Data

Zone	Bnch/St g	Entered Shot Total	Top (ftKB)	Btm (ftKB)	Date
NIOBRARA, ORIGINAL HOLE	A	64	6,321.00	6,337.00	8/1/2008
NIOBRARA, ORIGINAL HOLE	B	64	6,409.00	6,425.00	8/1/2008
CODELL, ORIGINAL HOLE		40	6,582.00	6,592.00	7/23/2008

Stimulations & Treatments

Date	Zone	Primary Job Type
8/1/2008	CODELL, ORIGINAL HOLE	DRILLING/COMPLETION - ORIGINAL
Technical Result	Tech Result Details	Tech Result Note
Success	According to Plan	

Comment

(CODELL): LATE FOR RTS 1 HOUR 38 MINUTES BECUASE TMV HAD COMMUNICATION ISSUES. HES ENG WAS NOT ABLE TO RUN FRAC PRO. JOB WENT WELL WITH NO OTHER ISSUES TO REPORT.

Well Name: WELLS RANCH USX BB01-16

VERTICAL - ORIGINAL HOLE, 1/26/2016 12:19:39 PM

Stimulations & Treatments

Date 8/1/2008	Zone NIOBRARA, ORIGINAL HOLE	Primary Job Type DRILLING/COMPLETION - ORIGINAL
Technical Result Success	Tech Result Details According to Plan	Tech Result Note
Comment (NIOBRARA): HAD PROBLEM WITH BLENDER RATE BOUNCING DURING 3 AND 4 LB STAGES. POSSIBLE CAUSE BLENDER HYDRAULIC COOLING FAN NOT TURNING FAST ENOUGH.		

Other In Hole

Run Date	Des	OD (in)	Top (ftKB)	Btm (ftKB)
5/31/2013	Stage Tool	2	4,016.0	4,021.0

Logs

Date	Type	Top, MD (ftKB)	Btm, MD (ftKB)
7/3/2008	Caliper/Comp. Density/Neutron/GR/SP/ML	2,590.0	6,763.0
7/3/2008	DIL/GR/SP/Caliper	484.0	6,763.0
7/22/2008	CBL/CCL/GR	1,170.0	6,697.0
9/30/2014	GYRO	10.0	6,500.0

