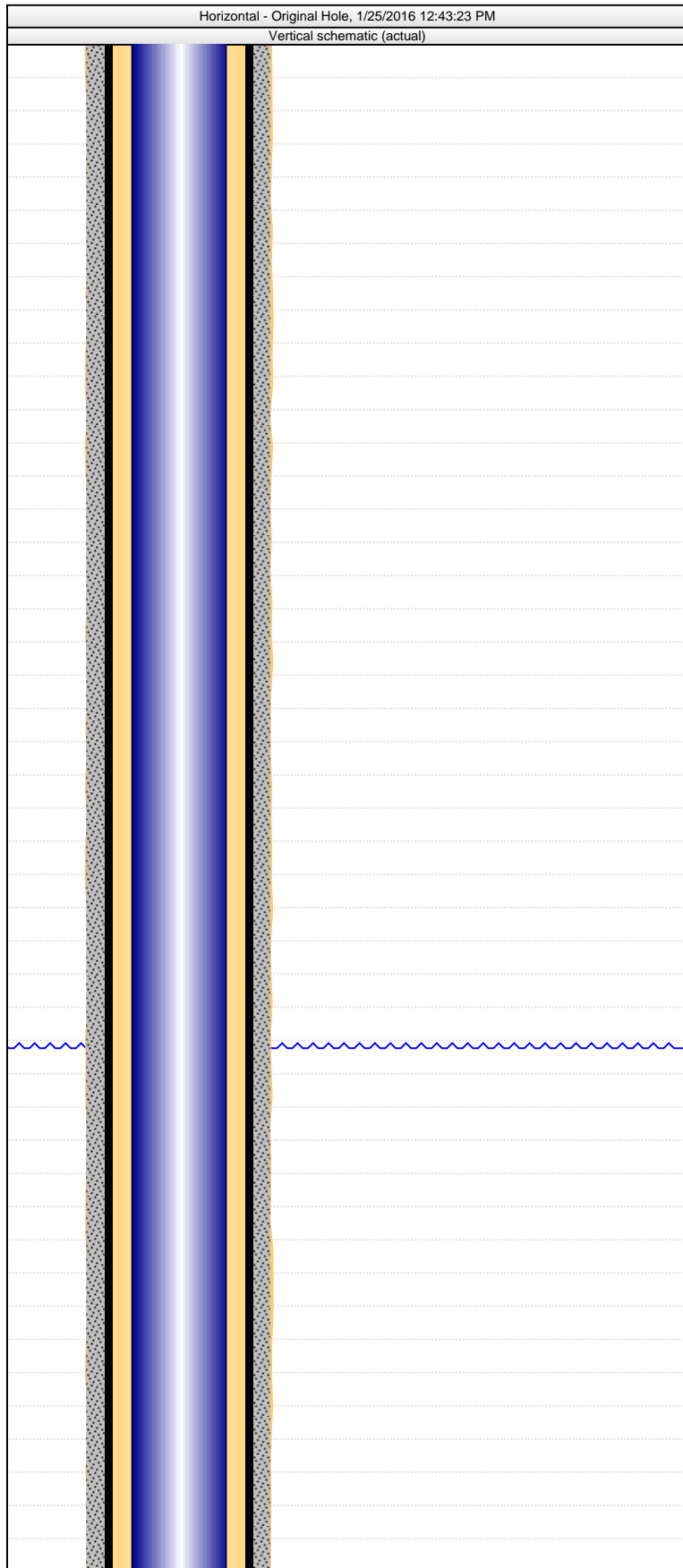


## Walton G-25HN

[www.peloton.com](http://www.peloton.com)

# Complete Well Summary

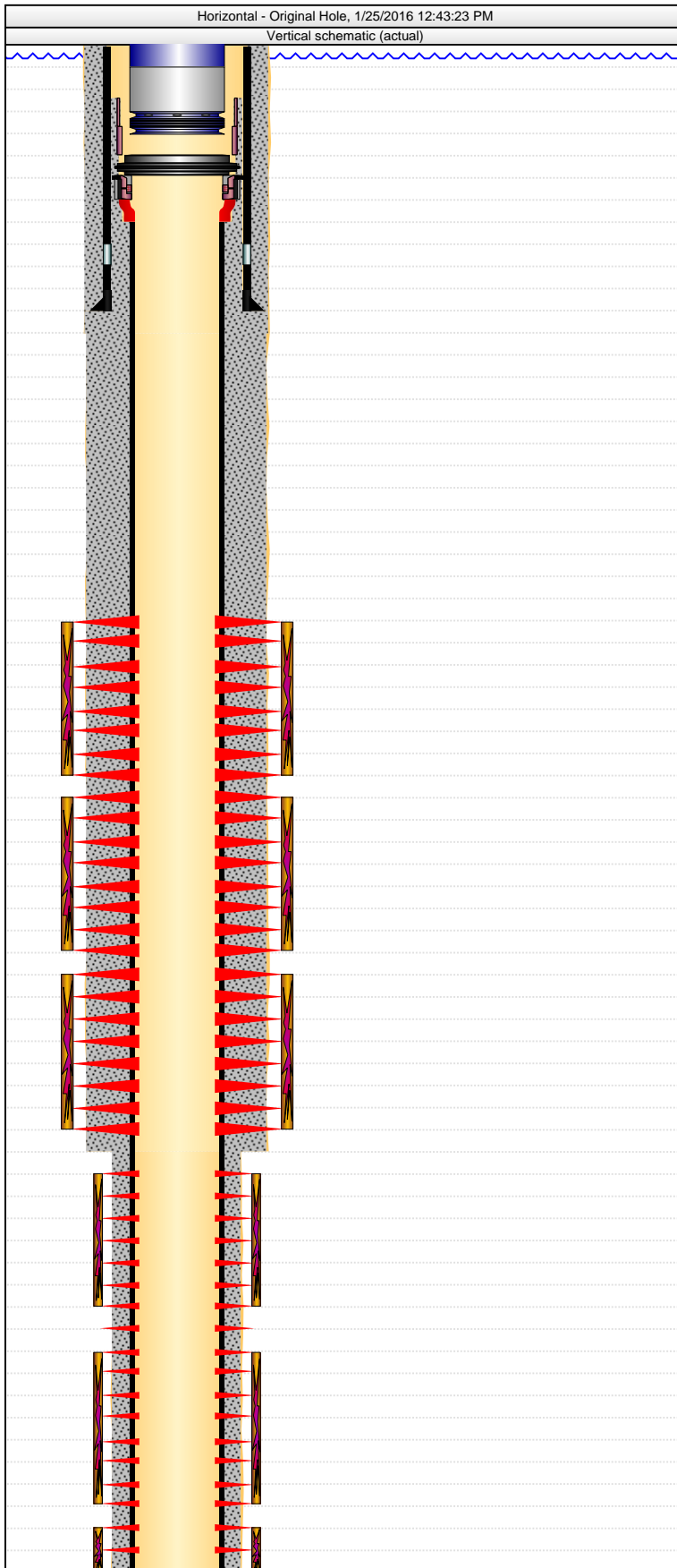
Walton G-25HN



Fluid	Class	Amount (sacks)	Yield (ft³/sack)	Mix H2O Ratio (gal/sack)	Vol Pumped (bbl)	Fluid Des		
Lead	TYPE III	730	1.40	6.80	180.0	Type III + 3% Calcium chloride + 1% Cello Flake + 1 gal. FP-6L + 0.3 % Static Free		
Intermediate Casing Cement, Casing, 8/13/2015 19:00								
Cementing Company Baker Hughes		Evaluation Method		Cement Evaluation Results 40 bbl spacer to surface out of 60 bbl pumped. No cement to surface.				
Stg # 1	Description Intermediate Casing Cement				Top (ftKB) 673.0	Btm (ftKB) 7,934.4	Full Return? Yes	
Fluid	Class	Amount (sacks)	Yield (ft³/sack)	Mix H2O Ratio (gal/sack)	Vol Pumped (bbl)	Fluid Des		
Lead	TYPE III	540	2.42	12.05	212.0	Type III (20:80) Poz + 0.5% R-3 + 0.2% CD-32 + 0.01 gps FP-6L + 15# CSE-2 + 0.4% FL-57 +111.7% FW		
Tail	G	230	1.22	5.36	50.0	Class G 50/50 Poz + 0.2% FL-63 + 0.3% CD-32 + 0.6% FL-52 + 0.01 gps FP-6L + 0.3% Sodium Metasilicate + 2% Bentonite II		
Displacement	N/A	0				Water, no additives		
Production Casing Cement, Casing, 9/17/2015 09:30								
Cementing Company Baker Hughes		Evaluation Method		Cement Evaluation Results 30 bbls cement to surface				
Stg # 1	Description Production Casing Cement				Top (ftKB) 6,941.4	Btm (ftKB) 12,249.0	Full Return? No	
Fluid	Class	Amount (sacks)	Yield (ft³/sack)	Mix H2O Ratio (gal/sack)	Vol Pumped (bbl)	Fluid Des		
Tail	G	600	1.44		147.0	Class G (50:50) Poz + 0.4% R-3 + 0.6% FL-52 + 0.01 gps FP-6L + 20% Silica Flour + 0.2% FL-63 + 3% Bentonite II + 61.3% FW		
Other In Hole								
OD (in)	Des		Top (ftKB)	Btm (ftKB)	ID (in)	Make	Model	
4	4 1/2" Composite Frac Plug		12,002.0	12,003.0	0.00			
4	4 1/2" Composite Frac Plug		11,817.0	11,818.0	0.00			
4	4 1/2" Composite Frac Plug		11,694.0	11,695.0	0.00			
4	4 1/2" Composite Frac Plug		11,566.0	11,567.0	0.00			
4	4 1/2" Composite Frac Plug		11,396.0	11,397.0	0.00			
4	4 1/2" Composite Frac Plug		11,227.0	11,228.0	0.00			
4	4 1/2" Composite Frac Plug		11,100.0	11,101.0	0.00			
4	4 1/2" Composite Frac Plug		10,932.0	10,933.0	0.00			
4	4 1/2" Composite Frac Plug		10,804.0	10,805.0	0.00			
4	4 1/2" Composite Frac Plug		10,634.0	10,635.0	0.00			
4	4 1/2" Composite Frac Plug		7,564.0	7,565.0	0.00			
4	4 1/2" Composite Frac Plug		10,507.0	10,508.0	0.00			
4	4 1/2" Composite Frac Plug		10,338.0	10,339.0	0.00			
4	4 1/2" Composite Frac Plug		10,169.0	10,170.0	0.00			
4	4 1/2" Composite Frac Plug		10,042.0	10,043.0	0.00			
4	4 1/2" Composite Frac Plug		9,873.0	9,874.0	0.00			
4	4 1/2" Composite Frac Plug		9,731.0	9,732.0	0.00			
4	4 1/2" Composite Frac Plug		9,577.0	9,578.0	0.00			
4	4 1/2" Composite Frac Plug		9,408.0	9,409.0	0.00			
4	4 1/2" Composite Frac Plug		9,281.0	9,282.0	0.00			
4	4 1/2" Composite Frac Plug		9,113.0	9,114.0	0.00			
4	4 1/2" Composite Frac Plug		8,974.0	8,975.0	0.00			
4	4 1/2" Composite Frac Plug		8,816.0	8,817.0	0.00			
<typ>, <make> on <dtmstart>								
Start Date		Type	Make		WP (psi)	Size (in)	Overhaul Date	
Vertical Components								
Make	Model	Seal on	Top Conn Type	Top Sz (in)	Btm Conn Type	Btm Sz (in)	Des	WP (psi)
General Notes								
Date		Com						
Drilling - original, 6/27/2015 10:46								
Job Category Drilling - 810		Primary Job Type Drilling - original				Start Date 6/27/2015	End Date	
Drilling - original, 6/27/2015 10:46								
AFE Number 2014WELDG.25HN		AFE+Supp Amt (Cost)		Total Fid Est (Cost) 1,434,680.15		Total Final Invoice (Cost)		
Summary								
Poss Cost Save (Cost)		Poss Time Save (hr)		Est Prob Cost (Cost)		Est Lost Time (hr)		

# Complete Well Summary

Walton G-25HN

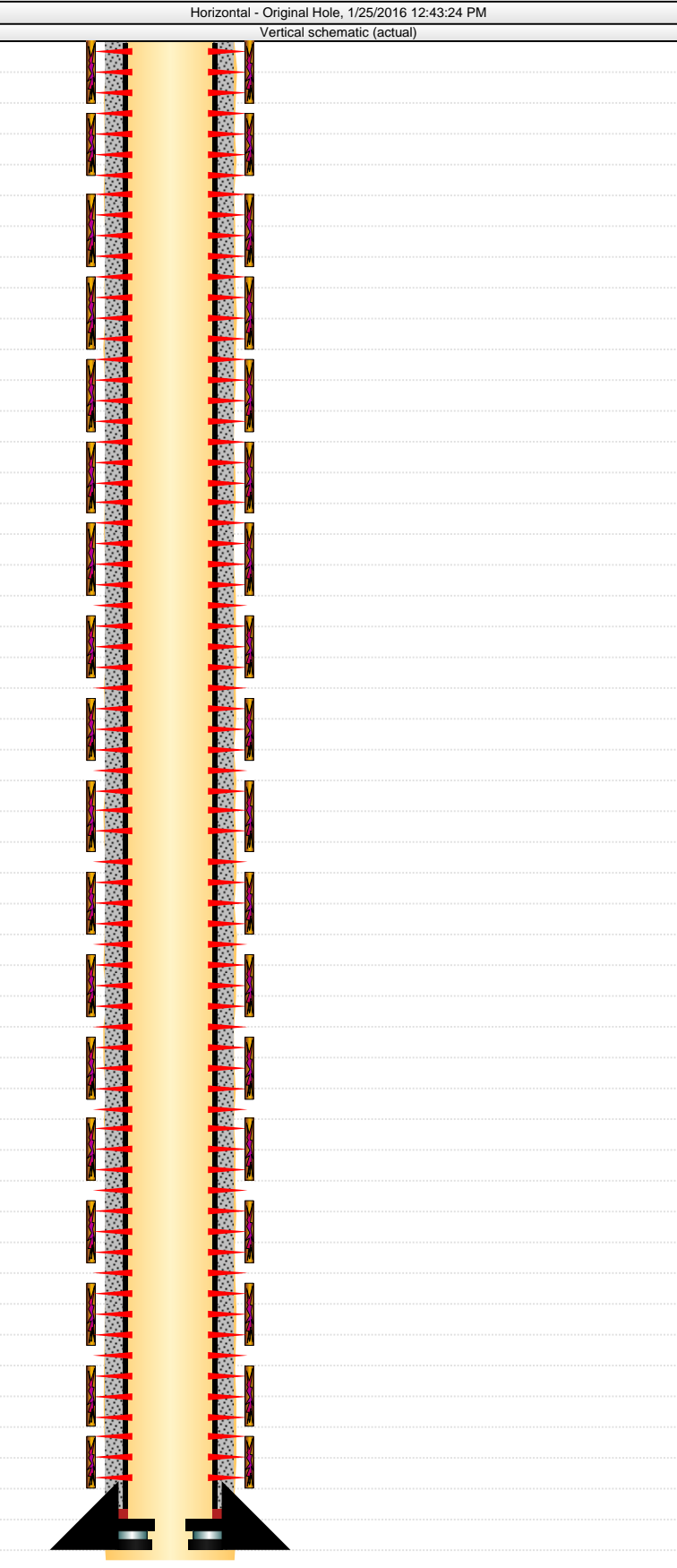


www.peloton.com

Phases					
Phase Type 1			Planned Likely Phase Cost (Cost)	Pl Cum Days ML (days)	Planned End Depth (ftKB)
Job Contacts					
Contact Name	Company		Title	Office	Mobile
Mark Stoner	IPT		Supervisor		530-721-0317
Siji Chaparro	IPT		Supervisor		720-951-8838
Craig Hope	IPT		Supervisor		970-656-3595
Gary Doke	IPT		Supervisor		620-640-5718
Andy McClure			Tool Pusher		307-240-0116
BHA #1, Surface					
BHA # 1	Size (in) 13 1/2	Model KM1652AR	IADC Codes _____	IADC Bit Dull -----	
Depth In (ftKB) 22.0	Depth Out (ftKB) 1,545.0	Drilled (ft) 1,523.00	Drill Time (hr) 10.50	Bit Hrs Out... 10.50	IADC Bit Dull -----
String Components					
PDC Logic KM1652AR, Mud Motor - Bent Housing, XO Sub, Drill Collar - Pony, MWD - Pressure, Drill Collar - Pony, Drill Collar - Flex Non Mag, Drill Collar - Flex Non Mag, HWDP					
BHA #2, Setback					
BHA # 2	Size (in) 8 3/4	Model SDI611	IADC Codes _____	IADC Bit Dull -----	
Depth In (ftKB) 1,545.0	Depth Out (ftKB) 7,979.0	Drilled (ft) 6,434.00	Drill Time (hr) 39.75	Bit Hrs Out... 39.75	IADC Bit Dull -----
String Components					
Smith SDI611, Mud Motor - Bent Housing, Drill Collar - Pony, UBHO, Drill Collar - Pony, Drill Collar - Non Mag, Drill Collar - Non Mag, Drill Pipe, HWDP, Drill Pipe					
BHA #3, Lateral					
BHA # 3	Size (in) 8 1/2	Model SKHI513M	IADC Codes _____	IADC Bit Dull -----	
Depth In (ftKB) 7,979.0	Depth Out (ftKB) 8,441.0	Drilled (ft) 462.00	Drill Time (hr) 10.00	Bit Hrs Out... 10.00	IADC Bit Dull -----
String Components					
Reed SKHI513M, Mud Motor - Bent Housing, Stabilizer, Drill Collar - Pony, UBHO, Drill Collar - Pony, Drill Collar - Non Mag, Drill Collar - Non Mag, Drill Pipe, Shock Sub, Drill Pipe, HWDP, Drill Pipe					
BHA #4, Lateral					
BHA # 4	Size (in) 8 1/2	Model SKHI513M	IADC Codes _____	IADC Bit Dull -----	
Depth In (ftKB) 8,441.0	Depth Out (ftKB) 9,157.0	Drilled (ft) 716.00	Drill Time (hr) 21.50	Bit Hrs Out... 31.50	IADC Bit Dull -----
String Components					
Reed SKHI513M, Mud Motor - Bent Housing, Stabilizer, Drill Collar - Pony, UBHO, Drill Collar - Pony, Drill Collar - Non Mag, Drill Collar - Non Mag, Drill Pipe, Drill Pipe, HWDP, Drill Pipe					
BHA #5, Lateral Assembly					
BHA # 5	Size (in) 6 1/4	Model KHI516ME-1	IADC Codes _____	IADC Bit Dull 0-1-WT-A---WT-TD	
Depth In (ftKB) 9,157.0	Depth Out (ftKB) 12,253.0	Drilled (ft) 3,096.00	Drill Time (hr) 33.50	Bit Hrs Out... 33.50	IADC Bit Dull 0-1-WT-A---WT-TD
String Components					
Reed KHI516ME-1, Mud Motor, Stabilizer, pony NMDC's, UBHO, Pony NMDC,, (2) NMDC's, X/O, DP , reamer, X/O, DP, eccentric reamer,, Drill Pipe, HWDP, Drill Pipe					
Initial Completion, 10/20/2015 00:00					
Job Category Completion - 820		Primary Job Type Initial Completion		Start Date 10/20/2015	End Date
Initial Completion, 10/20/2015 00:00					
AFE Number		AFE+Supp Amt (Cost)	Total Fid Est (Cost) 1,405,555.26	Total Final Invoice (Cost)	
Summary					
Poss Cost Save (Cost)		Poss Time Save (hr)	Est Prob Cost (Cost)	Est Lost Time (hr)	
Phases					
Phase Type 1			Planned Likely Phase Cost (Cost)	Pl Cum Days ML (days)	Planned End Depth (ftKB)
Job Contacts					
Contact Name	Company		Title	Office	Mobile
Josh Freed	Schneider Energy Consulting		Well Site Supervisor	970-867-9437	970-370-4899
Alfredo Ramirez	Basic Energy Services		Rig Supervisor		970-380-9924
BHA #<stringno>, <des>					
BHA #	Size (in)	Model	IADC Codes	IADC Bit Dull	
Depth In (ftKB)	Depth Out (ftKB)	Drilled (ft)	Drill Time (hr)	Bit Hrs Out...	IADC Bit Dull
String Components					
Logs					
Date	Type		Top (ftKB)	Btm (ftKB)	Logging Company

Complete Well Summary

Walton G-25HN



Bottom Hole Cores					
Core #	Type	Top (ftKB)	Btm (ftKB)	Recov (ft)	Wellbore
Leak Off and Formation Integrity Tests					
Test Date	Last Casing String Run	P Surf Applied (psi)	Depth (ftKB)	Dens Fluid (lb/gal)	Lea k off?
Schematic Annotations					
Depth (ftKB)			Annotation		
Production Failures					
Failure Date	Failure Des	Fail Type	Cause	Resolved Date	Est Fail (Cost)