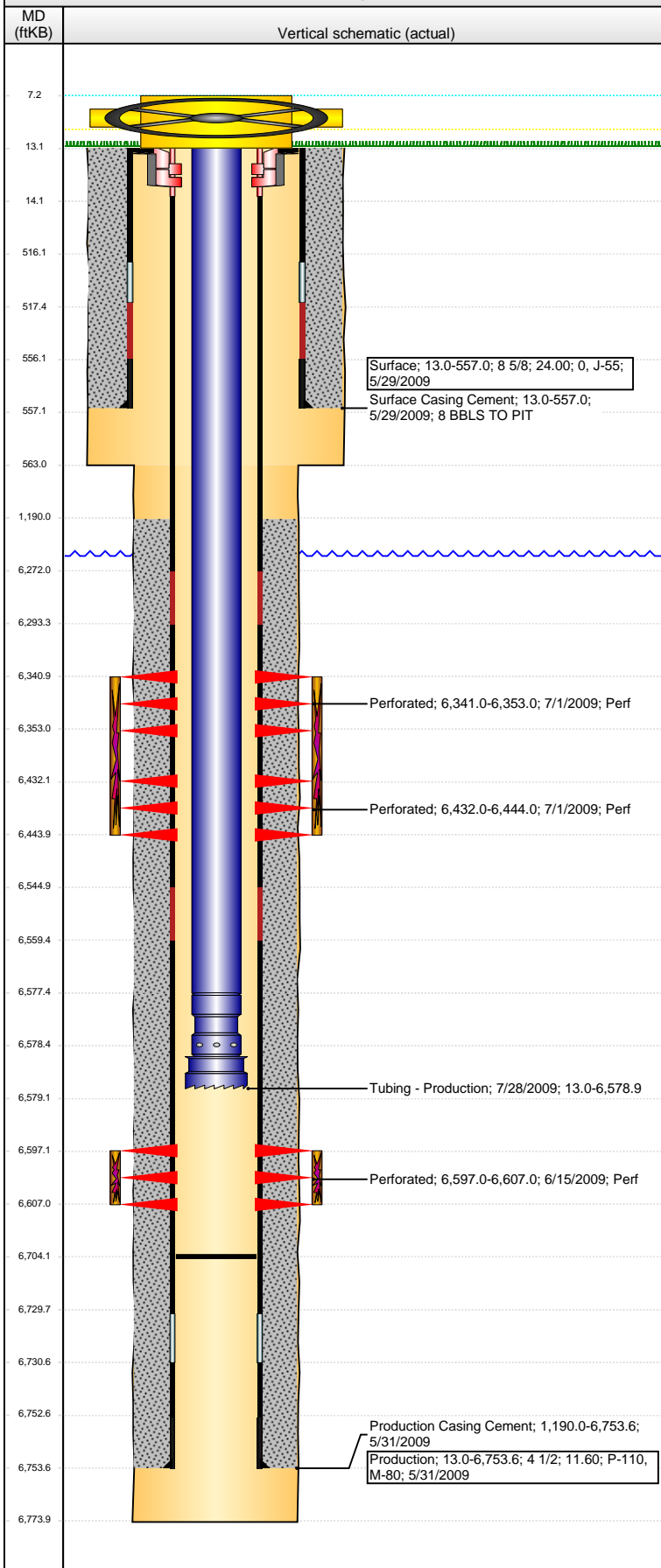


**Well Name: WELLS RANCH AF06-06**

VERTICAL - ORIGINAL HOLE, 1/25/2016 8:09:42 AM



## Well Header

API 05-123-30172	Business Unit DJ BASIN	District 15	Well Config VERTICAL
Original KB Elevation (ft) 4,690.00	KB - GL / MSL (ftKB) 13.00	Spud Date 5/29/2009	P & A Date
Comment			

## Directions To Well

WCR 67 & 68, EAST 2/10THS OF A MILE, SOUTH 1.75 MILES, EAST 2.75 MILES, SOUTH 1.5 MILES, SOUTHEAST INTO LOCATION

## Congressional Location

Quarter 1	Quarter 2	Quarter 3 SE	Quarter 4 NW	Section 6	Township 5 N	Twnshp N...	Range 62 W	Rng E/W Dir
-----------	-----------	-----------------	-----------------	--------------	-----------------	-------------	---------------	-------------

## Bottom Hole Location

North-South Distance (ft)	From N or S Line	East-West Distance (ft)	From E or W Line
---------------------------	------------------	-------------------------	------------------

## Plug Back Total Depths

Date	Depth (ftKB)	Method	Com
5/31/2009	6,730.7	CASING TALLY	
6/9/2009	6,716.0	CASED HOLE LOG	
7/28/2009	6,704.0	TUBING TALLY	

## Wellbore Sections

Section Des	Size (in)	Act Top, MD (ftKB)	Act Btm, MD (ftKB)
SURFACE	12 1/4	13.0	563.0
PRODUCTION	7 7/8	563.0	6,774.0

## Zone Statuses

Zone Name	Status Date	Status	Fluid Type	Job	Prod Method
NIOBRARA	7/3/2009	PR		DRILLING/CO...	
CODELL	7/3/2009	PR		DRILLING/CO...	

## Casing Strings

### Surface, 557.0ftKB

Casing Description	Run Date	OD (in)	Wt/Len (l...)	Grade	Top, MD (ft...)	MD (ftKB)
Surface	5/29/2009	8 5/8	24.00	J-55	13.0	557.0

### Production, 6,753.6ftKB

Casing Description	Run Date	OD (in)	Wt/Len (l...)	Grade	Top, MD (ft...)	MD (ftKB)
Production	5/31/2009	4 1/2	11.60	M-80	13.0	6,753.6

## Cement

Description	Top Depth (ftKB)	Bottom Depth (ftKB)
Surface Casing Cement	13.0	557.0
Description	Top Depth (ftKB)	Bottom Depth (ftKB)
Production Casing Cement	1,190.0	6,753.6

## Tubing Strings

Tubing Description	Run Date	String...	ID (in)	Wt (lb/ft)	Grade	Len (ft)	Set De...
Tubing - Production	7/28/2009	2 3/8	1.995	4.70	J-55	6,565.90	6,576.9

## Tubing Components

Item Des	OD (in)	Wt (lb/ft)	Grade	Jts	Len (ft)	Btm (ftKB)	Btm (TVD) (ftKB)
Tubing	2 3/8	4.70	J-55	213	6,564.40	6,577.4	
Pump Seating Nipple	2 3/8			1	1.10	6,578.5	6,576.5
Notched collar	3 1/16			1	0.40	6,578.9	6,576.9

## Perforation Data

Zone	Bnch/St g	Entered Shot Total	Top (ftKB)	Btm (ftKB)	Date
NIOBRARA, ORIGINAL HOLE	A	24	6,341.00	6,353.00	7/1/2009
NIOBRARA, ORIGINAL HOLE	B	24	6,432.00	6,444.00	7/1/2009
CODELL, ORIGINAL HOLE		40	6,597.00	6,607.00	6/15/2009

## Stimulations & Treatments

Date	Zone	Primary Job Type
7/1/2009	CODELL, ORIGINAL HOLE	DRILLING/COMPLETION - ORIGINAL
Technical Result Success	Tech Result Details	Tech Result Note
	According to Plan	

## Comment

(CODELL): START OF 2 PSA STAGE HAD TO SWITCH OUT BA-40L PUMPS BECAUSE IT WAS HAVING PROBLEMS MOVING PRODUCT. JOB WENT WELL WITH NO OTHER ISSUES TO REPORT.

**Well Name: WELLS RANCH AF06-06**

VERTICAL - ORIGINAL HOLE, 1/25/2016 8:09:45 AM

## Stimulations & Treatments

Date 7/1/2009	Zone NIOBRARA, ORIGINAL HOLE	Primary Job Type DRILLING/COMPLETION - ORIGINAL
Technical Result Success	Tech Result Details According to Plan	Tech Result Note

Comment  
(NIOBRARA): HAD PROBLEMS WITH A FRAC PUMP DURING PAD. HAD TO TAKE OFF LINE AND REPLACE VALVE IN FLUID END BUT WAS ABLE TO KEEP ABOVE 50 BPM WITH OTHER HORSE POWER. JOB WENT WELL WITH NO OTHER ISSUES TO REPORT.

## Other In Hole

Run Date	Des	OD (in)	Top (ftKB)	Btm (ftKB)

## Logs

Date	Type	Top, MD (ftKB)	Btm, MD (ftKB)
5/31/2009	Caliper/Comp. Density/Neutron/GR/SP/ML	2,650.0	6,769.0
5/31/2009	DIL/GR/SP/Caliper	557.0	6,769.0
6/9/2009	CBL/CCL/GR	1,060.0	6,715.0
10/3/2014	GYRO	10.0	6,500.0

