

BONANZA CREEK ENERGY INC.

WELD COUNTY, COLORADO (NAD 83)

SE SW SEC. 20 T5N R62W 6th P.M.

ANTELOPE 11-14-29HNC

ORIGINAL WELLBORE

10 December, 2015

Plan: PROPOSAL #1





Project: WELD COUNTY, COLORADO (NAD 83)
Site: SE SW SEC. 20 T5N R62W 6th P.M.
Well: ANTELOPE 11-14-29HNC
Wellbore: ORIGINAL WELLBORE
Design: PROPOSAL #1

ANNOTATIONS

TVD	MD	Inc	Azi	+N/-S	+E/-W	VSec	Dep	Annotation
1800.0	1800.0	0.00	0.00	0.0	0.0	0.0	0.0	START NUDGE (2°/100ft BUR)
2512.4	2519.9	14.40	259.20	-16.9	-88.4	32.0	90.0	EOB TO 14.4° INC
5326.3	5425.1	14.40	259.20	-152.2	-798.0	288.9	812.4	END OF TANGENT
6038.7	6145.1	0.00	0.00	-169.1	-886.4	320.9	902.4	EOD TO VERTICAL
6068.7	6175.1	0.00	0.00	-169.1	-886.4	320.9	902.4	KOP (12°/100ft BUR)
6529.9	6800.1	75.00	179.96	-523.0	-886.2	669.3	1256.3	START OF TANGENT
6555.8	6900.1	75.00	179.96	-619.6	-886.1	764.4	1352.9	END OF TANGENT
6572.0	7025.1	90.00	179.96	-743.2	-886.0	886.1	1476.4	7" ICP - ANTELOPE 11-14-29HNC
6572.0	11276.6	90.00	179.97	-4994.7	-883.4	5072.2	5727.9	BHL - ANTELOPE 11-14-29HNC

PROPOSED LOCAL COORDINATES:

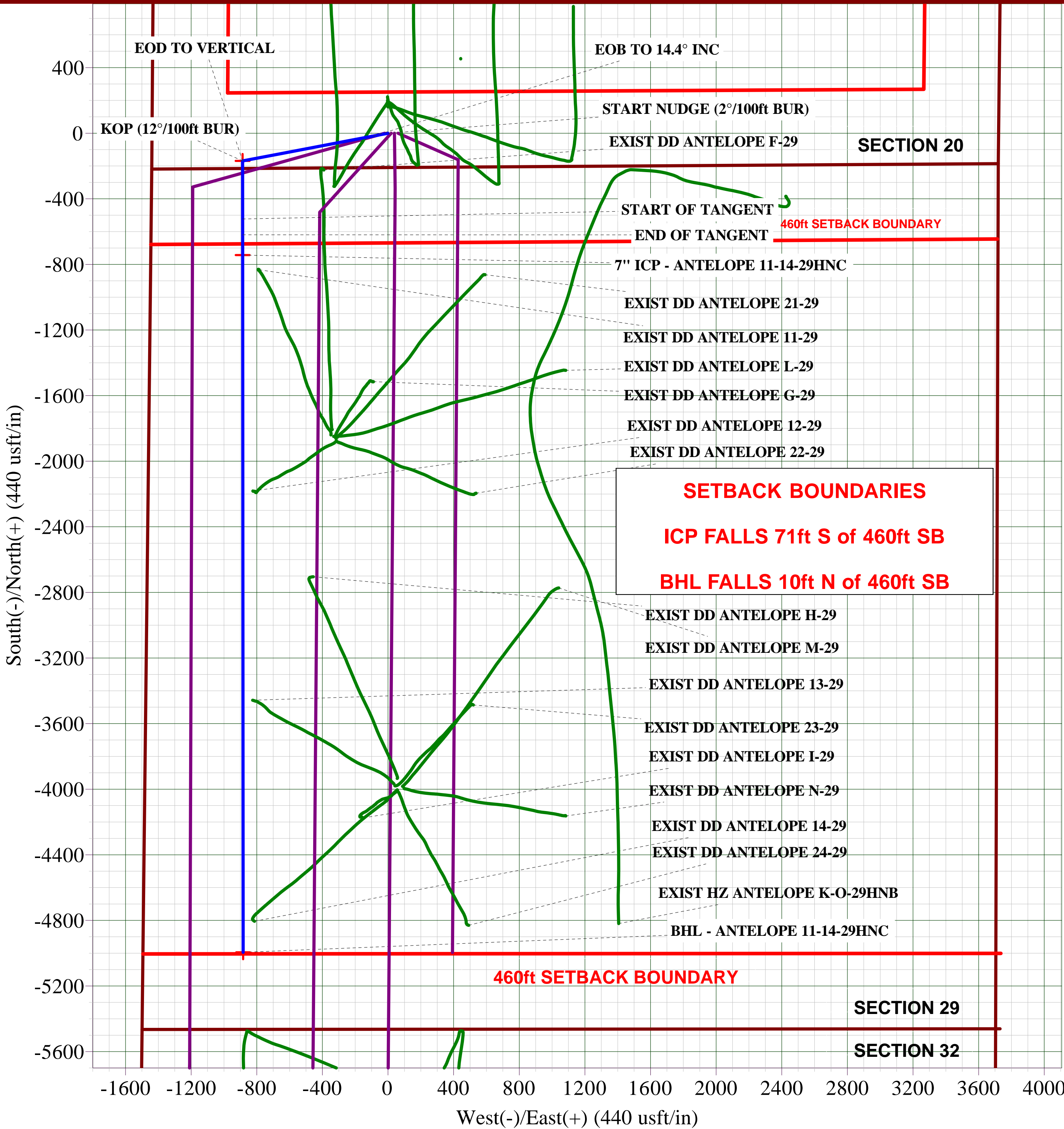
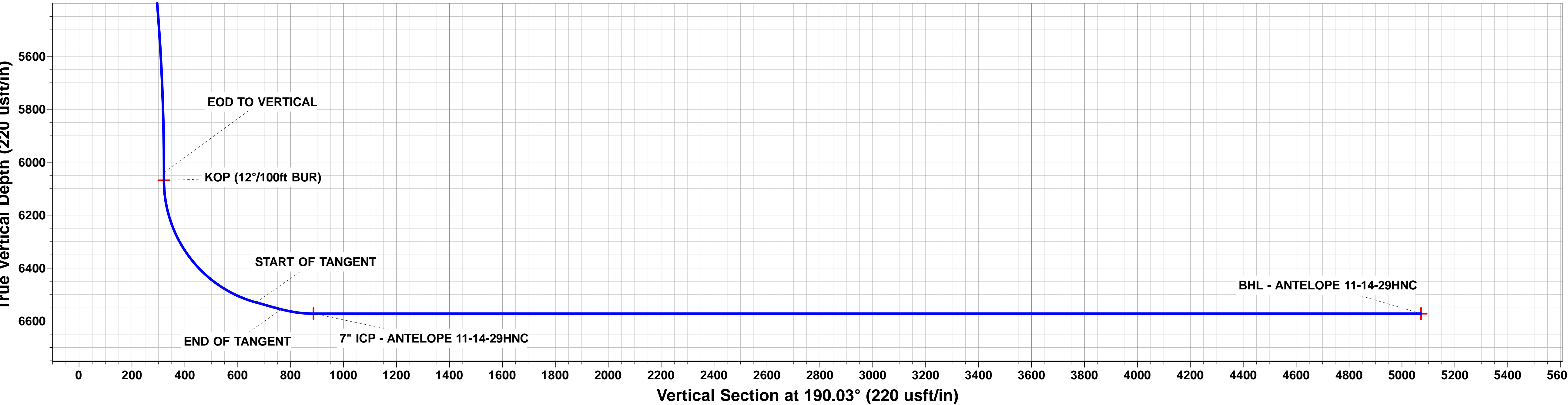
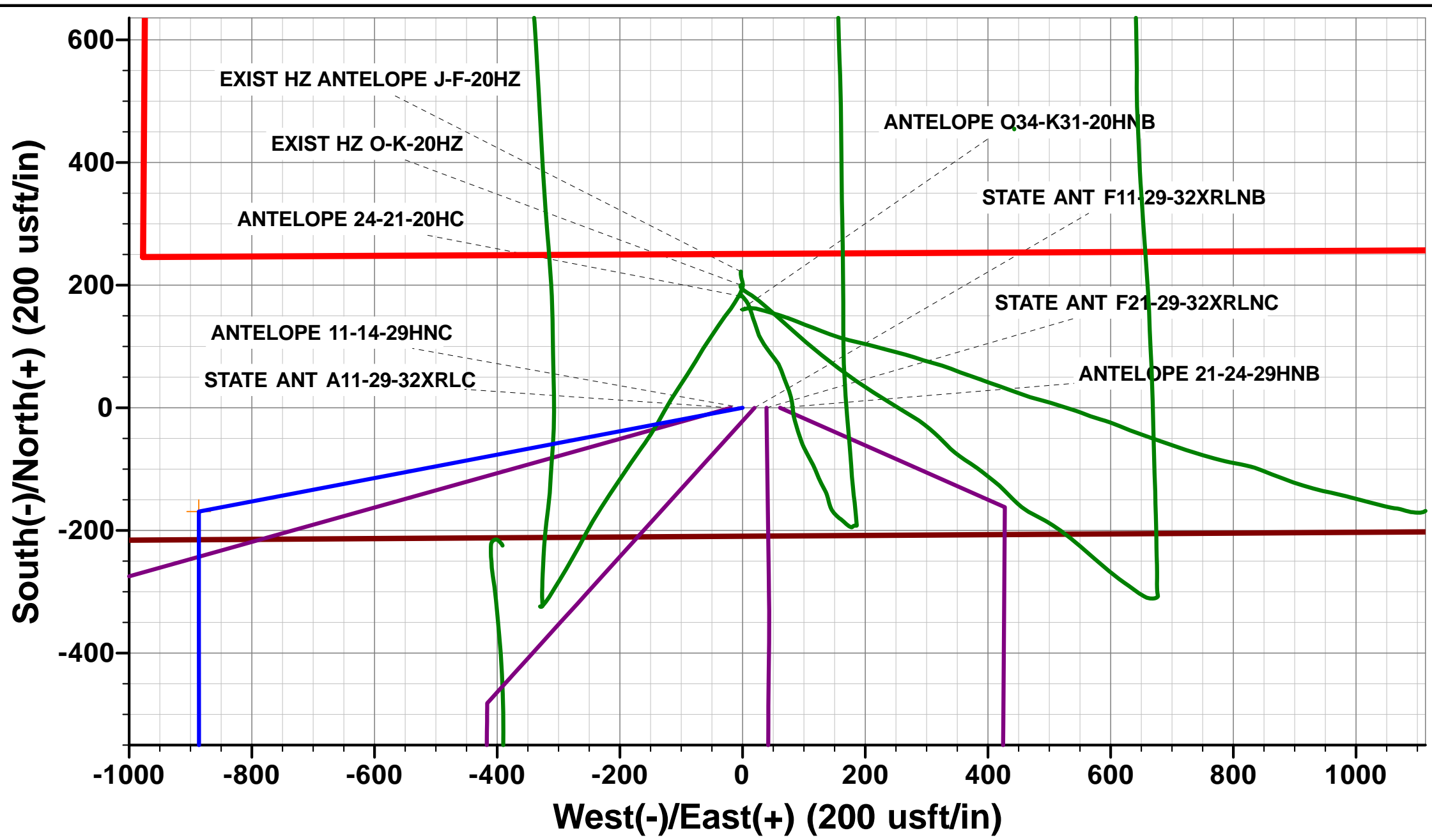
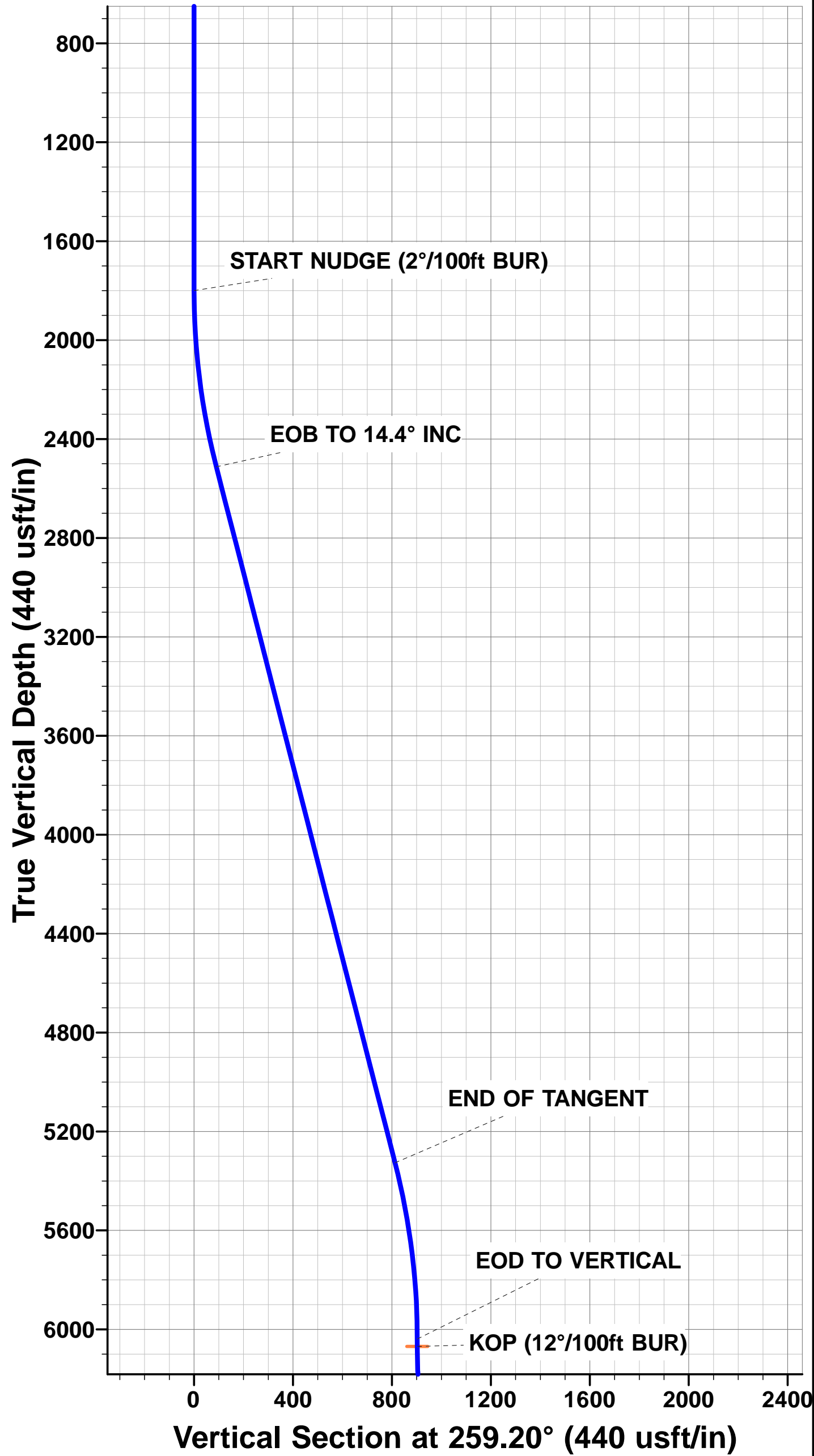
SHL: 210ft FSL & 1438ft FWL Sec 20

7" ICP: 531ft FNL & 560ft FWL Sec 29

BHL: 470ft FNL & 610ft FWL Sec 29

WELLBORE TARGET DETAILS (LAT/LONG)

Name	TVD	+N/-S	+E/-W	Latitude	Longitude
KOP - ANTELOPE 11-14-29HNC	6068.7	-169.1	-886.4	40.377956	-104.354721
7" ICP - ANTELOPE 11-14-29HNC	6572.0	-743.2	-886.0	40.376380	-104.354720
BHL - ANTELOPE 11-14-29HNC	6572.0	-4994.7	-883.4	40.364710	-104.354710



Database:	EDM 5000.1 Single User Db	Local Co-ordinate Reference:	Well ANTELOPE 11-14-29HNC
Company:	BONANZA CREEK ENERGY INC.	TVD Reference:	KB-EST @ 4682.0usft (Original Well Elev)
Project:	WELD COUNTY, COLORADO (NAD 83)	MD Reference:	KB-EST @ 4682.0usft (Original Well Elev)
Site:	SE SW SEC. 20 T5N R62W 6th P.M.	North Reference:	True
Well:	ANTELOPE 11-14-29HNC	Survey Calculation Method:	Minimum Curvature
Wellbore:	ORIGINAL WELLBORE		
Design:	PROPOSAL #1		

Project	WELD COUNTY, COLORADO (NAD 83)		
Map System:	US State Plane 1983	System Datum:	Mean Sea Level
Geo Datum:	North American Datum 1983		
Map Zone:	Colorado Northern Zone		Using geodetic scale factor

Site	SE SW SEC. 20 T5N R62W 6th P.M.				
Site Position:		Northing:	1,382,952.91 usft	Latitude:	40.378920
From:	Lat/Long	Easting:	3,319,945.73 usft	Longitude:	-104.351550
Position Uncertainty:	0.0 usft	Slot Radius:	1.10000 ft	Grid Convergence:	0.74 °

Well	ANTELOPE 11-14-29HNC					
Well Position	+N/-S	-182.2 usft	Northing:	1,382,770.80 usft	Latitude:	40.378420
	+E/-W	2.8 usft	Easting:	3,319,950.88 usft	Longitude:	-104.351540
Position Uncertainty		0.0 usft	Wellhead Elevation:	usft	Ground Level:	4,665.0 usft

Wellbore	ORIGINAL WELLBORE				
Magnetics	Model Name	Sample Date	Declination (°)	Dip Angle (°)	Field Strength (nT)
	IGRF2015	10/12/2015	8.15	66.94	52,599

Design	PROPOSAL #1			
Audit Notes:				
Version:	Phase:	PROTOTYPE	Tie On Depth:	0.0
Vertical Section:	Depth From (TVD) (usft)	+N/-S (usft)	+E/-W (usft)	Direction (°)
	6,572.0	0.0	0.0	190.03

Plan Sections											
MD (usft)	Inc (°)	Azi (°)	Vertical Depth	SS (usft)	+N/-S (usft)	+E/-W (usft)	Dogleg Rate (°/100usf)	Build Rate (°/100usf)	Turn Rate (°/100usf)	TFO (°)	Target
0.0	0.00	0.00	0.0	-4,682.0	0.0	0.0	0.00	0.00	0.00	0.00	
1,800.0	0.00	0.00	1,800.0	-2,882.0	0.0	0.0	0.00	0.00	0.00	0.00	
2,519.9	14.40	259.20	2,512.4	-2,169.6	-16.9	-88.4	2.00	2.00	0.00	259.20	
5,425.1	14.40	259.20	5,326.3	644.3	-152.2	-798.0	0.00	0.00	0.00	0.00	
6,145.1	0.00	0.00	6,038.7	1,356.7	-169.1	-886.4	2.00	-2.00	0.00	180.00	
6,175.1	0.00	0.00	6,068.7	1,386.7	-169.1	-886.4	0.00	0.00	0.00	0.00	KOP - ANTELOPE
6,800.1	75.00	179.96	6,529.9	1,847.9	-523.0	-886.2	12.00	12.00	0.00	179.96	
6,900.1	75.00	179.96	6,555.8	1,873.8	-619.6	-886.1	0.00	0.00	0.00	0.00	
7,025.1	90.00	179.96	6,572.0	1,890.0	-743.2	-886.0	12.00	12.00	0.00	0.00	
11,276.6	90.00	179.97	6,572.0	1,890.0	-4,994.7	-883.4	0.00	0.00	0.00	82.22	BHL - ANTELOPE

Database:	EDM 5000.1 Single User Db	Local Co-ordinate Reference:	Well ANTELOPE 11-14-29HNC
Company:	BONANZA CREEK ENERGY INC.	TVD Reference:	KB-EST @ 4682.0usft (Original Well Elev)
Project:	WELD COUNTY, COLORADO (NAD 83)	MD Reference:	KB-EST @ 4682.0usft (Original Well Elev)
Site:	SE SW SEC. 20 T5N R62W 6th P.M.	North Reference:	True
Well:	ANTELOPE 11-14-29HNC	Survey Calculation Method:	Minimum Curvature
Wellbore:	ORIGINAL WELLBORE		
Design:	PROPOSAL #1		

Planned Survey

MD (usft)	Inc (°)	Azi (°)	TVD (usft)	SS (usft)	+N/-S (usft)	+E/-W (usft)	Vertical Section (usft)	Dogleg Rate (°/100usft)	Build Rate (°/100usft)	Turn Rate (°/100usft)
0.0	0.00	0.00	0.0	4,682.00	0.0	0.0	0.0	0.00	0.00	0.00
100.0	0.00	0.00	100.0	4,582.00	0.0	0.0	0.0	0.00	0.00	0.00
200.0	0.00	0.00	200.0	4,482.00	0.0	0.0	0.0	0.00	0.00	0.00
300.0	0.00	0.00	300.0	4,382.00	0.0	0.0	0.0	0.00	0.00	0.00
400.0	0.00	0.00	400.0	4,282.00	0.0	0.0	0.0	0.00	0.00	0.00
500.0	0.00	0.00	500.0	4,182.00	0.0	0.0	0.0	0.00	0.00	0.00
600.0	0.00	0.00	600.0	4,082.00	0.0	0.0	0.0	0.00	0.00	0.00
700.0	0.00	0.00	700.0	3,982.00	0.0	0.0	0.0	0.00	0.00	0.00
800.0	0.00	0.00	800.0	3,882.00	0.0	0.0	0.0	0.00	0.00	0.00
900.0	0.00	0.00	900.0	3,782.00	0.0	0.0	0.0	0.00	0.00	0.00
1,000.0	0.00	0.00	1,000.0	3,682.00	0.0	0.0	0.0	0.00	0.00	0.00
1,100.0	0.00	0.00	1,100.0	3,582.00	0.0	0.0	0.0	0.00	0.00	0.00
1,200.0	0.00	0.00	1,200.0	3,482.00	0.0	0.0	0.0	0.00	0.00	0.00
1,300.0	0.00	0.00	1,300.0	3,382.00	0.0	0.0	0.0	0.00	0.00	0.00
1,400.0	0.00	0.00	1,400.0	3,282.00	0.0	0.0	0.0	0.00	0.00	0.00
1,500.0	0.00	0.00	1,500.0	3,182.00	0.0	0.0	0.0	0.00	0.00	0.00
1,600.0	0.00	0.00	1,600.0	3,082.00	0.0	0.0	0.0	0.00	0.00	0.00
1,700.0	0.00	0.00	1,700.0	2,982.00	0.0	0.0	0.0	0.00	0.00	0.00
START NUDGE (2°/100ft BUR)										
1,800.0	0.00	0.00	1,800.0	2,882.00	0.0	0.0	0.0	0.00	0.00	0.00
1,900.0	2.00	259.20	1,900.0	2,782.02	-0.3	-1.7	0.6	2.00	2.00	0.00
2,000.0	4.00	259.20	1,999.8	2,682.16	-1.3	-6.9	2.5	2.00	2.00	0.00
2,100.0	6.00	259.20	2,099.5	2,582.55	-2.9	-15.4	5.6	2.00	2.00	0.00
2,200.0	8.00	259.20	2,198.7	2,483.30	-5.2	-27.4	9.9	2.00	2.00	0.00
2,300.0	10.00	259.20	2,297.5	2,384.53	-8.2	-42.8	15.5	2.00	2.00	0.00
2,400.0	12.00	259.20	2,395.6	2,286.38	-11.7	-61.5	22.3	2.00	2.00	0.00
2,500.0	14.00	259.20	2,493.1	2,188.94	-15.9	-83.6	30.3	2.00	2.00	0.00
EOB TO 14.4° INC										
2,519.9	14.40	259.20	2,512.4	2,169.63	-16.9	-88.4	32.0	2.00	2.00	0.00
2,600.0	14.40	259.20	2,589.9	2,092.07	-20.6	-107.9	39.1	0.00	0.00	0.00
2,700.0	14.40	259.20	2,686.8	1,995.21	-25.3	-132.4	47.9	0.00	0.00	0.00
2,800.0	14.40	259.20	2,783.6	1,898.35	-29.9	-156.8	56.8	0.00	0.00	0.00
2,900.0	14.40	259.20	2,880.5	1,801.49	-34.6	-181.2	65.6	0.00	0.00	0.00
3,000.0	14.40	259.20	2,977.4	1,704.63	-39.2	-205.7	74.4	0.00	0.00	0.00
3,100.0	14.40	259.20	3,074.2	1,607.77	-43.9	-230.1	83.3	0.00	0.00	0.00
3,200.0	14.40	259.20	3,171.1	1,510.91	-48.6	-254.5	92.1	0.00	0.00	0.00
3,300.0	14.40	259.20	3,267.9	1,414.06	-53.2	-278.9	101.0	0.00	0.00	0.00
3,400.0	14.40	259.20	3,364.8	1,317.20	-57.9	-303.4	109.8	0.00	0.00	0.00
3,500.0	14.40	259.20	3,461.7	1,220.34	-62.5	-327.8	118.7	0.00	0.00	0.00
3,600.0	14.40	259.20	3,558.5	1,123.48	-67.2	-352.2	127.5	0.00	0.00	0.00
3,700.0	14.40	259.20	3,655.4	1,026.62	-71.9	-376.6	136.3	0.00	0.00	0.00
3,800.0	14.40	259.20	3,752.2	929.76	-76.5	-401.1	145.2	0.00	0.00	0.00
3,900.0	14.40	259.20	3,849.1	832.90	-81.2	-425.5	154.0	0.00	0.00	0.00
4,000.0	14.40	259.20	3,946.0	736.04	-85.8	-449.9	162.9	0.00	0.00	0.00
4,100.0	14.40	259.20	4,042.8	639.18	-90.5	-474.3	171.7	0.00	0.00	0.00
4,200.0	14.40	259.20	4,139.7	542.32	-95.1	-498.8	180.6	0.00	0.00	0.00
4,300.0	14.40	259.20	4,236.5	445.47	-99.8	-523.2	189.4	0.00	0.00	0.00
4,400.0	14.40	259.20	4,333.4	348.61	-104.5	-547.6	198.2	0.00	0.00	0.00
4,500.0	14.40	259.20	4,430.3	251.75	-109.1	-572.0	207.1	0.00	0.00	0.00
4,600.0	14.40	259.20	4,527.1	154.89	-113.8	-596.5	215.9	0.00	0.00	0.00
4,700.0	14.40	259.20	4,624.0	58.03	-118.4	-620.9	224.8	0.00	0.00	0.00
4,800.0	14.40	259.20	4,720.8	-38.83	-123.1	-645.3	233.6	0.00	0.00	0.00
4,900.0	14.40	259.20	4,817.7	-135.69	-127.8	-669.7	242.5	0.00	0.00	0.00
5,000.0	14.40	259.20	4,914.5	-232.55	-132.4	-694.2	251.3	0.00	0.00	0.00

Database:	EDM 5000.1 Single User Db	Local Co-ordinate Reference:	Well ANTELOPE 11-14-29HNC
Company:	BONANZA CREEK ENERGY INC.	TVD Reference:	KB-EST @ 4682.0usft (Original Well Elev)
Project:	WELD COUNTY, COLORADO (NAD 83)	MD Reference:	KB-EST @ 4682.0usft (Original Well Elev)
Site:	SE SW SEC. 20 T5N R62W 6th P.M.	North Reference:	True
Well:	ANTELOPE 11-14-29HNC	Survey Calculation Method:	Minimum Curvature
Wellbore:	ORIGINAL WELLBORE		
Design:	PROPOSAL #1		

Planned Survey

MD (usft)	Inc (°)	Azi (°)	TVD (usft)	SS (usft)	+N/-S (usft)	+E/-W (usft)	Vertical Section (usft)	Dogleg Rate (°/100usft)	Build Rate (°/100usft)	Turn Rate (°/100usft)
5,100.0	14.40	259.20	5,011.4	-329.41	-137.1	-718.6	260.1	0.00	0.00	0.00
5,200.0	14.40	259.20	5,108.3	-426.27	-141.7	-743.0	269.0	0.00	0.00	0.00
5,300.0	14.40	259.20	5,205.1	-523.12	-146.4	-767.4	277.8	0.00	0.00	0.00
5,400.0	14.40	259.20	5,302.0	-619.98	-151.1	-791.9	286.7	0.00	0.00	0.00
END OF TANGENT										
5,425.1	14.40	259.20	5,326.3	-644.33	-152.2	-798.0	288.9	0.00	0.00	0.00
5,500.0	12.90	259.20	5,399.1	-717.08	-155.5	-815.4	295.2	2.00	-2.00	0.00
5,600.0	10.90	259.20	5,496.9	-814.92	-159.4	-835.6	302.5	2.00	-2.00	0.00
5,700.0	8.90	259.20	5,595.4	-913.43	-162.6	-852.5	308.6	2.00	-2.00	0.00
5,800.0	6.90	259.20	5,694.5	-1,012.47	-165.2	-866.0	313.5	2.00	-2.00	0.00
5,900.0	4.90	259.20	5,793.9	-1,111.94	-167.1	-876.1	317.2	2.00	-2.00	0.00
6,000.0	2.90	259.20	5,893.7	-1,211.70	-168.4	-882.8	319.6	2.00	-2.00	0.00
6,100.0	0.90	259.20	5,993.6	-1,311.64	-169.0	-886.1	320.8	2.00	-2.00	0.00
EDO TO VERTICAL										
6,145.1	0.00	0.00	6,038.7	-1,356.70	-169.1	-886.4	320.9	2.00	-2.00	0.00
KOP (12°/100ft BUR)										
6,175.1	0.00	0.00	6,068.7	-1,386.70	-169.1	-886.4	320.9	0.00	0.00	0.00
6,200.0	2.99	179.96	6,093.6	-1,411.63	-169.8	-886.4	321.5	12.00	12.00	0.00
6,300.0	14.99	179.96	6,192.2	-1,510.22	-185.4	-886.4	336.9	12.00	12.00	0.00
6,400.0	26.99	179.96	6,285.4	-1,603.41	-221.1	-886.4	372.1	12.00	12.00	0.00
6,500.0	38.99	179.96	6,369.1	-1,687.13	-275.5	-886.3	425.6	12.00	12.00	0.00
6,600.0	50.99	179.96	6,439.7	-1,757.72	-346.0	-886.3	495.1	12.00	12.00	0.00
6,700.0	62.99	179.96	6,494.1	-1,812.10	-429.7	-886.2	577.5	12.00	12.00	0.00
6,800.0	74.99	179.96	6,529.9	-1,847.88	-522.9	-886.2	669.3	12.00	12.00	0.00
START OF TANGENT										
6,800.1	75.00	179.96	6,529.9	-1,847.90	-523.0	-886.2	669.3	12.00	12.00	0.00
6,900.0	75.00	179.96	6,555.8	-1,873.76	-619.5	-886.1	764.4	0.00	0.00	0.00
END OF TANGENT										
6,900.1	75.00	179.96	6,555.8	-1,873.78	-619.6	-886.1	764.4	0.00	0.00	0.00
7,000.0	86.99	179.96	6,571.4	-1,889.39	-718.1	-886.0	861.4	12.00	12.00	0.00
7" ICP - ANTELOPE 11-14-29HNC										
7,025.1	90.00	179.96	6,572.0	-1,890.05	-743.2	-886.0	886.1	12.00	12.00	0.00
7,100.0	90.00	179.96	6,572.0	-1,890.05	-818.1	-885.9	959.9	0.00	0.00	0.00
7,200.0	90.00	179.96	6,572.0	-1,890.05	-918.1	-885.9	1,058.4	0.00	0.00	0.00
7,300.0	90.00	179.96	6,572.0	-1,890.05	-1,018.1	-885.8	1,156.8	0.00	0.00	0.00
7,400.0	90.00	179.96	6,572.0	-1,890.05	-1,118.1	-885.7	1,255.3	0.00	0.00	0.00
7,500.0	90.00	179.96	6,572.0	-1,890.05	-1,218.1	-885.7	1,353.7	0.00	0.00	0.00
7,600.0	90.00	179.96	6,572.0	-1,890.05	-1,318.1	-885.6	1,452.2	0.00	0.00	0.00
7,700.0	90.00	179.96	6,572.0	-1,890.05	-1,418.1	-885.5	1,550.7	0.00	0.00	0.00
7,800.0	90.00	179.96	6,572.0	-1,890.05	-1,518.1	-885.5	1,649.1	0.00	0.00	0.00
7,900.0	90.00	179.96	6,572.0	-1,890.04	-1,618.1	-885.4	1,747.6	0.00	0.00	0.00
8,000.0	90.00	179.96	6,572.0	-1,890.04	-1,718.1	-885.3	1,846.0	0.00	0.00	0.00
8,100.0	90.00	179.96	6,572.0	-1,890.04	-1,818.1	-885.3	1,944.5	0.00	0.00	0.00
8,200.0	90.00	179.96	6,572.0	-1,890.04	-1,918.1	-885.2	2,043.0	0.00	0.00	0.00
8,300.0	90.00	179.96	6,572.0	-1,890.04	-2,018.1	-885.1	2,141.4	0.00	0.00	0.00
8,400.0	90.00	179.96	6,572.0	-1,890.04	-2,118.1	-885.1	2,239.9	0.00	0.00	0.00
8,500.0	90.00	179.96	6,572.0	-1,890.04	-2,218.1	-885.0	2,338.3	0.00	0.00	0.00
8,600.0	90.00	179.96	6,572.0	-1,890.04	-2,318.1	-884.9	2,436.8	0.00	0.00	0.00
8,700.0	90.00	179.96	6,572.0	-1,890.04	-2,418.1	-884.9	2,535.3	0.00	0.00	0.00
8,800.0	90.00	179.96	6,572.0	-1,890.04	-2,518.1	-884.8	2,633.7	0.00	0.00	0.00
8,900.0	90.00	179.96	6,572.0	-1,890.04	-2,618.1	-884.8	2,732.2	0.00	0.00	0.00
9,000.0	90.00	179.96	6,572.0	-1,890.04	-2,718.1	-884.7	2,830.6	0.00	0.00	0.00
9,100.0	90.00	179.96	6,572.0	-1,890.04	-2,818.1	-884.6	2,929.1	0.00	0.00	0.00

Database:	EDM 5000.1 Single User Db	Local Co-ordinate Reference:	Well ANTELOPE 11-14-29HNC
Company:	BONANZA CREEK ENERGY INC.	TVD Reference:	KB-EST @ 4682.0usft (Original Well Elev)
Project:	WELD COUNTY, COLORADO (NAD 83)	MD Reference:	KB-EST @ 4682.0usft (Original Well Elev)
Site:	SE SW SEC. 20 T5N R62W 6th P.M.	North Reference:	True
Well:	ANTELOPE 11-14-29HNC	Survey Calculation Method:	Minimum Curvature
Wellbore:	ORIGINAL WELLBORE		
Design:	PROPOSAL #1		

Planned Survey

MD (usft)	Inc (°)	Azi (°)	TVD (usft)	SS (usft)	+N/-S (usft)	+E/-W (usft)	Vertical Section (usft)	Dogleg Rate (°/100usft)	Build Rate (°/100usft)	Turn Rate (°/100usft)
9,200.0	90.00	179.96	6,572.0	-1,890.03	-2,918.1	-884.6	3,027.6	0.00	0.00	0.00
9,300.0	90.00	179.96	6,572.0	-1,890.03	-3,018.1	-884.5	3,126.0	0.00	0.00	0.00
9,400.0	90.00	179.97	6,572.0	-1,890.03	-3,118.1	-884.4	3,224.5	0.00	0.00	0.00
9,500.0	90.00	179.97	6,572.0	-1,890.03	-3,218.1	-884.4	3,322.9	0.00	0.00	0.00
9,600.0	90.00	179.97	6,572.0	-1,890.03	-3,318.1	-884.3	3,421.4	0.00	0.00	0.00
9,700.0	90.00	179.97	6,572.0	-1,890.03	-3,418.1	-884.3	3,519.9	0.00	0.00	0.00
9,800.0	90.00	179.97	6,572.0	-1,890.03	-3,518.1	-884.2	3,618.3	0.00	0.00	0.00
9,900.0	90.00	179.97	6,572.0	-1,890.03	-3,618.1	-884.1	3,716.8	0.00	0.00	0.00
10,000.0	90.00	179.97	6,572.0	-1,890.02	-3,718.1	-884.1	3,815.2	0.00	0.00	0.00
10,100.0	90.00	179.97	6,572.0	-1,890.02	-3,818.1	-884.0	3,913.7	0.00	0.00	0.00
10,200.0	90.00	179.97	6,572.0	-1,890.02	-3,918.1	-884.0	4,012.2	0.00	0.00	0.00
10,300.0	90.00	179.97	6,572.0	-1,890.02	-4,018.1	-883.9	4,110.6	0.00	0.00	0.00
10,400.0	90.00	179.97	6,572.0	-1,890.02	-4,118.1	-883.9	4,209.1	0.00	0.00	0.00
10,500.0	90.00	179.97	6,572.0	-1,890.02	-4,218.1	-883.8	4,307.6	0.00	0.00	0.00
10,600.0	90.00	179.97	6,572.0	-1,890.01	-4,318.1	-883.7	4,406.0	0.00	0.00	0.00
10,700.0	90.00	179.97	6,572.0	-1,890.01	-4,418.1	-883.7	4,504.5	0.00	0.00	0.00
10,800.0	90.00	179.97	6,572.0	-1,890.01	-4,518.1	-883.6	4,602.9	0.00	0.00	0.00
10,900.0	90.00	179.97	6,572.0	-1,890.01	-4,618.1	-883.6	4,701.4	0.00	0.00	0.00
11,000.0	90.00	179.97	6,572.0	-1,890.01	-4,718.1	-883.5	4,799.9	0.00	0.00	0.00
11,100.0	90.00	179.97	6,572.0	-1,890.00	-4,818.1	-883.5	4,898.3	0.00	0.00	0.00
11,200.0	90.00	179.97	6,572.0	-1,890.00	-4,918.1	-883.4	4,996.8	0.00	0.00	0.00
BHL - ANTELOPE 11-14-29HNC										
11,276.6	90.00	179.97	6,572.0	-1,890.00	-4,994.7	-883.4	5,072.2	0.00	0.00	0.00

Plan Annotations

MD (usft)	TVD (usft)	Local Coordinates		Comment
		+N/-S (usft)	+E/-W (usft)	
1,800.0	1,800.0	0.0	0.0	START NUDGE (2°/100ft BUR)
2,519.9	2,512.4	-16.9	-88.4	EOB TO 14.4° INC
5,425.1	5,326.3	-152.2	-798.0	END OF TANGENT
6,145.1	6,038.7	-169.1	-886.4	EDO TO VERTICAL
6,175.1	6,068.7	-169.1	-886.4	KOP (12°/100ft BUR)
6,800.1	6,529.9	-523.0	-886.2	START OF TANGENT
6,900.1	6,555.8	-619.6	-886.1	END OF TANGENT
7,025.1	6,572.0	-743.2	-886.0	7" ICP - ANTELOPE 11-14-29HNC
11,276.6	6,572.0	-4,994.7	-883.4	BHL - ANTELOPE 11-14-29HNC