

January 18, 2016



410 17th Street, Suite 1400
Denver, CO 80202
(720) 440-6100 phone
(720) 305-0804 fax

Bonanzacrk.com

Colorado Oil and Gas Conservation Commission
The Chancery Building
1120 Lincoln Street, Suite 801
Denver, CO 80203
Matthew Lepore, Director

Re: Notice of 318A.a.(4)D. Proposed Niobrara Horizontal Wellbore Spacing Unit

State Antelope F11-29-32XRLNB

SHL: SESW (210' FSL, 1458' FWL) Section 20-T5N-R62W, Weld County, CO

Top of Production: (631' FNL, 1025' FWL) Section 29-T5N-R62W, Weld County, CO

Bottom of Production: (470' FSL, 1060' FWL) Section 32-T5N-R62W, Weld County, CO

Director Lepore:

Bonanza Creek Energy Operating Company LLC ("Bonanza") intends to permit, drill and operate the referenced Niobrara Horizontal Well. As defined by Colorado Oil and Gas Conservation Commission (COGCC) Rule 318A.a.(4)D., Bonanza proposes the following wellbore spacing unit:

W/2 Sec. 29, T5N, R62W, Weld County, CO – containing 320 acres more or less

W/2 Sec. 32, T5N, R62W, Weld County, CO – containing 320 acres more or less

Bonanza is the sole mineral lease holder in the proposed spacing unit, and no mineral owner notifications were required.

Bonanza respectfully requests that you review the enclosed wellbore spacing unit documentation and approve the referenced APD.

Please do not hesitate to call or email me at (303) 803-1718 or Jvigil@Bonanzacrk.com, should you have any questions pertaining to this matter.

Sincerely,

A handwritten signature in blue ink that reads 'J. Vigil'.

Julie L. Vigil

Sr. Regulatory Specialist

BONANZA CREEK ENERGY OPERATING COMPANY LLC



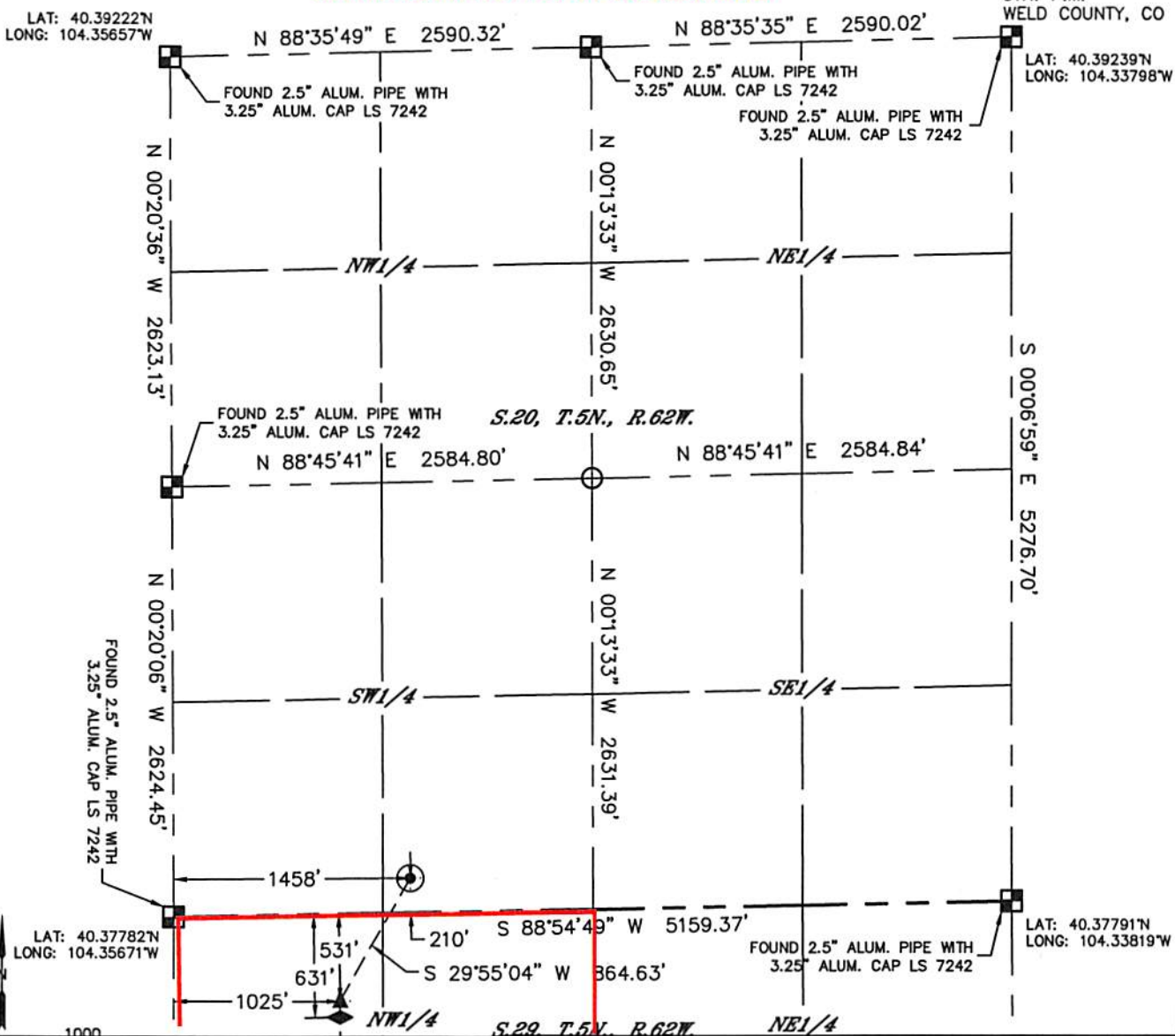
Lat40°, Inc. 6250 W. 10th Street, Unit 2, Greeley, CO 970-515-5294

WELL LOCATION CERTIFICATE

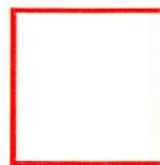
STATE ANTELOPE F11-29-32XRLNB

SECTION: 20
TOWNSHIP: 5N
RANGE: 62W
6TH. P.M.
WELD COUNTY, CO

LAT: 40.39222°N
LONG: 104.35657°W



**BONANZA
CREEK**



Wellbore Spacing Unit Outline



Proposed Spacing Unit Map

December 29, 2015 KK

State Antelope F11-29-32XRLNB

W/2 Sec. 29, T5N, R62W

W/2 Sec. 32, T5N, R62W

Weld County, Colorado

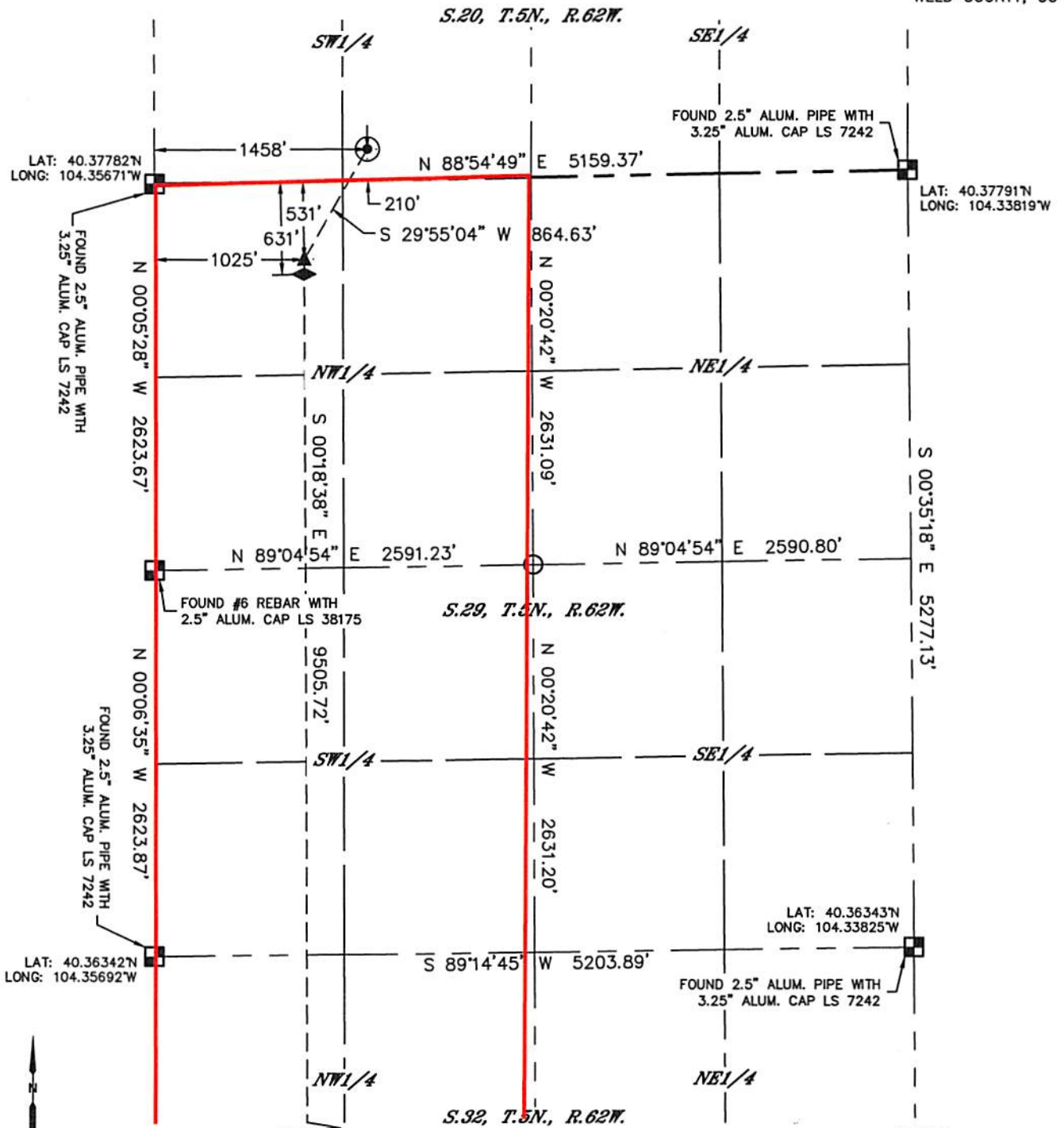


Lat40°, Inc. 6250 W. 10th Street, Unit 2, Greeley, CO 970-515-5294

WELL LOCATION CERTIFICATE

STATE ANTELOPE F11-29-32XRLNB

SECTION: 20
TOWNSHIP: 5N
RANGE: 62W
6TH. P.M.
WELD COUNTY, CO



Proposed Spacing Unit Map

December 29, 2015

Page 2

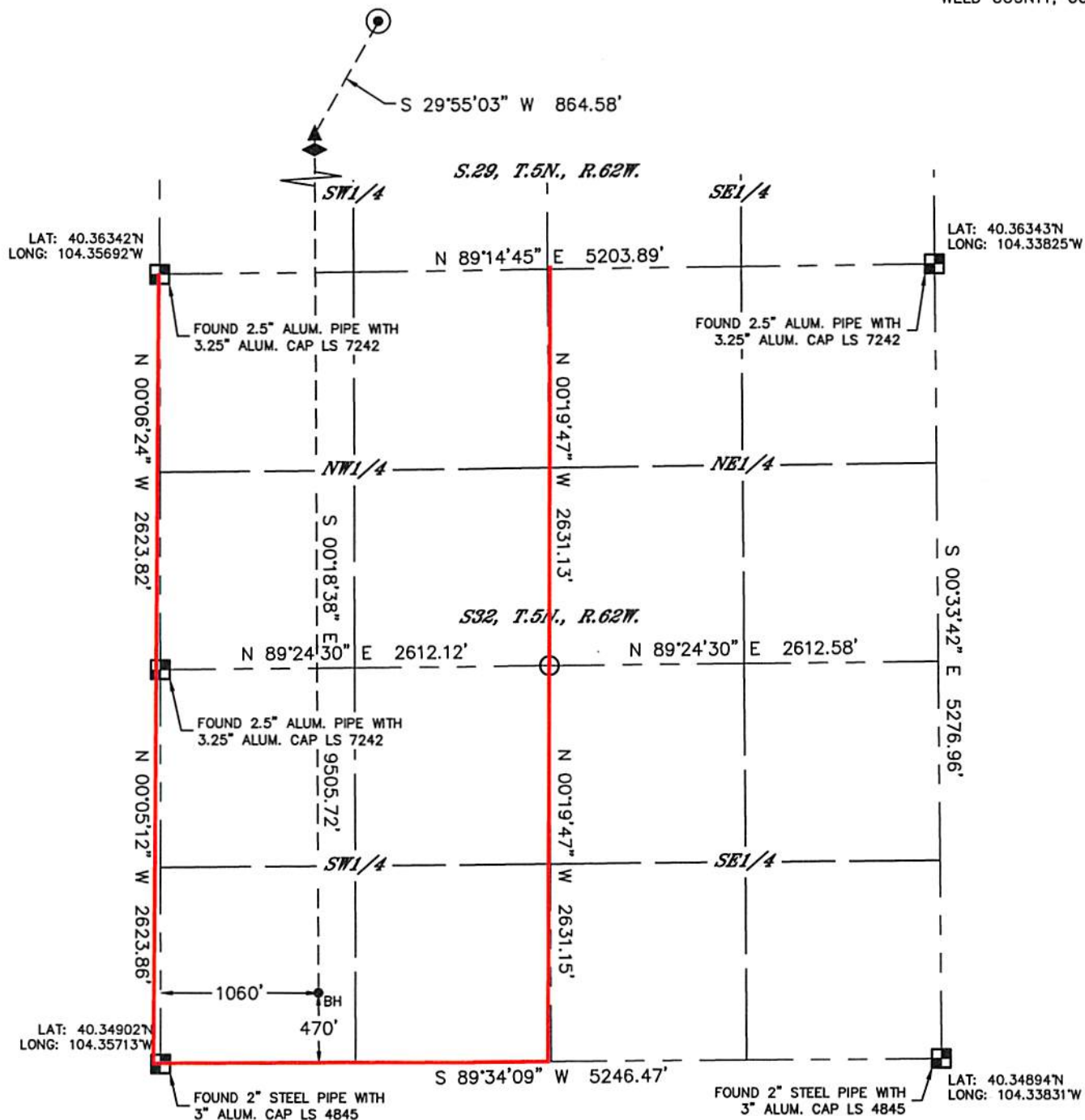


Lat40°, Inc. 6250 W. 10th Street, Unit 2, Greeley, CO 970-515-5294

WELL LOCATION CERTIFICATE

STATE ANTELOPE F11-29-32XRLNB

SECTION: 20
TOWNSHIP: 5N
RANGE: 62W
6TH. P.M.
WELD COUNTY, CO



Proposed Spacing Unit Map

December 29, 2015

Page 3