

BONANZA CREEK ENERGY INC.

WELD COUNTY, COLORADO (NAD 83)

SE SW SEC. 20 T5N R62W 6th P.M.

STATE ANTELOPE A11-29-32XRLC

ORIGINAL WELLBORE

10 December, 2015

Plan: PROPOSAL #4





Project: WELD COUNTY, COLORADO (NAD 83)
Site: SE SW SEC. 20 T5N R62W 6th P.M.
Well: STATE ANTELOPE A11-29-32XRLC
Wellbore: ORIGINAL WELLBORE
Design: PROPOSAL #4

ANNOTATIONS

TVD	MD	Inc	Azi	+N/-S	+E/-W	VSect	Dep	Annotation
1700.0	1700.0	0.00	0.00	0.0	0.0	0.0	0.0	START NUDGE (2°/100ft BUR)
2784.4	2812.1	22.24	254.35	-57.5	-205.3	81.1	213.2	EOB TO 22.24° INC
4715.5	4898.5	22.24	254.35	-270.5	-965.7	381.7	1002.9	END OF TANGENT
5799.9	6010.6	0.00	0.00	-328.0	-1171.0	462.8	1216.1	EOD TO VERTICAL
5829.9	6040.6	0.00	0.00	-328.0	-1171.0	462.8	1216.1	KOP (8°/100ft BUR)
6521.7	6978.1	75.00	180.20	-858.8	-1172.8	990.2	1746.9	START OF TANGENT
6547.6	7078.1	75.00	180.20	-955.4	-1173.2	1086.2	1843.5	END OF TANGENT
6572.0	7265.6	90.00	180.20	-1140.8	-1173.8	1270.3	2028.9	7" ICP - STATE ANTELOPE A11-29-32XRLC (P4)
6572.0	16365.5	90.00	180.22	-10240.6	-1206.9	10311.5	11128.8	BHL - STATE ANTELOPE A11-29-32XRLC (P4)

PROPOSED LOCAL COORDINATES:

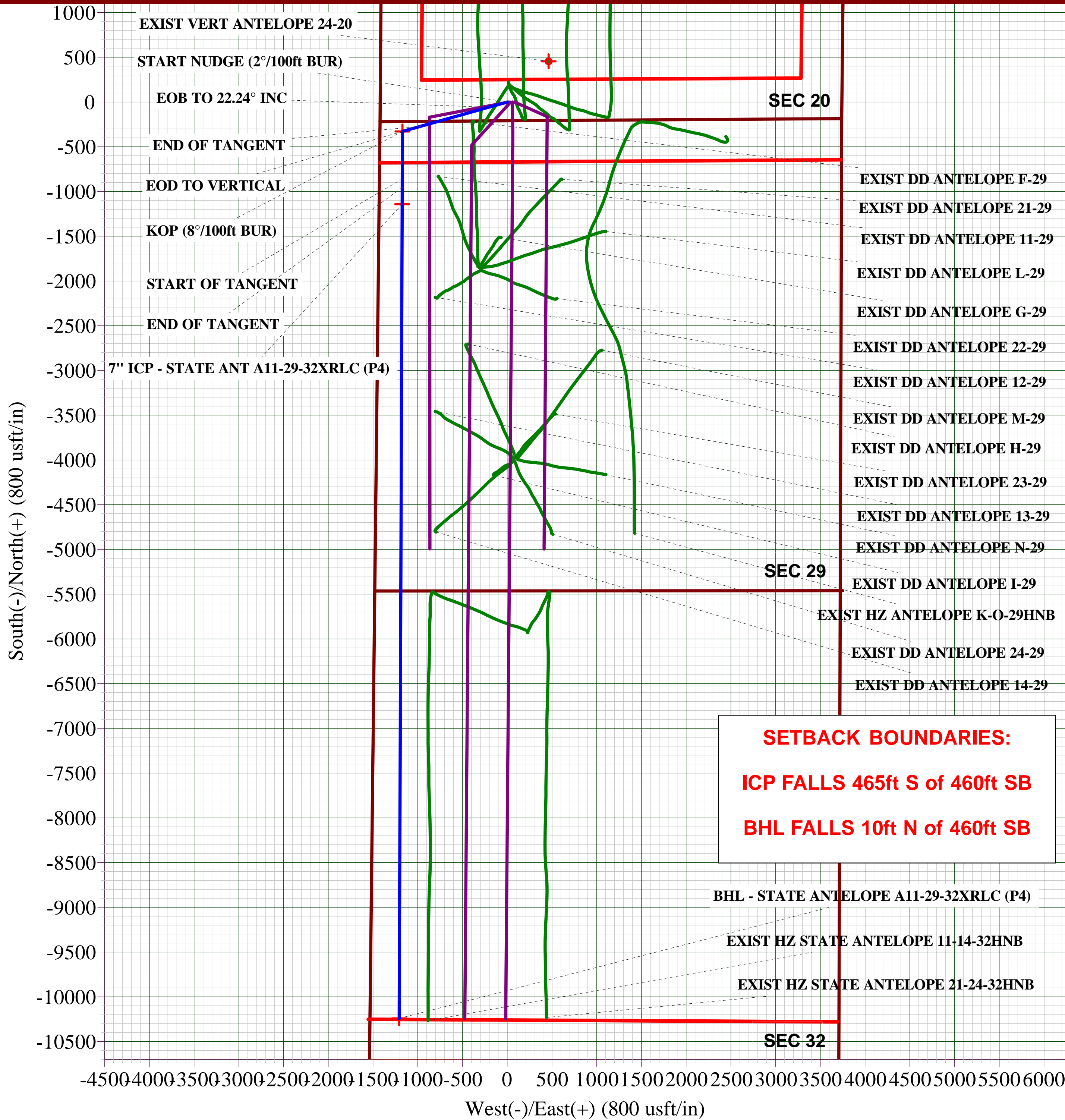
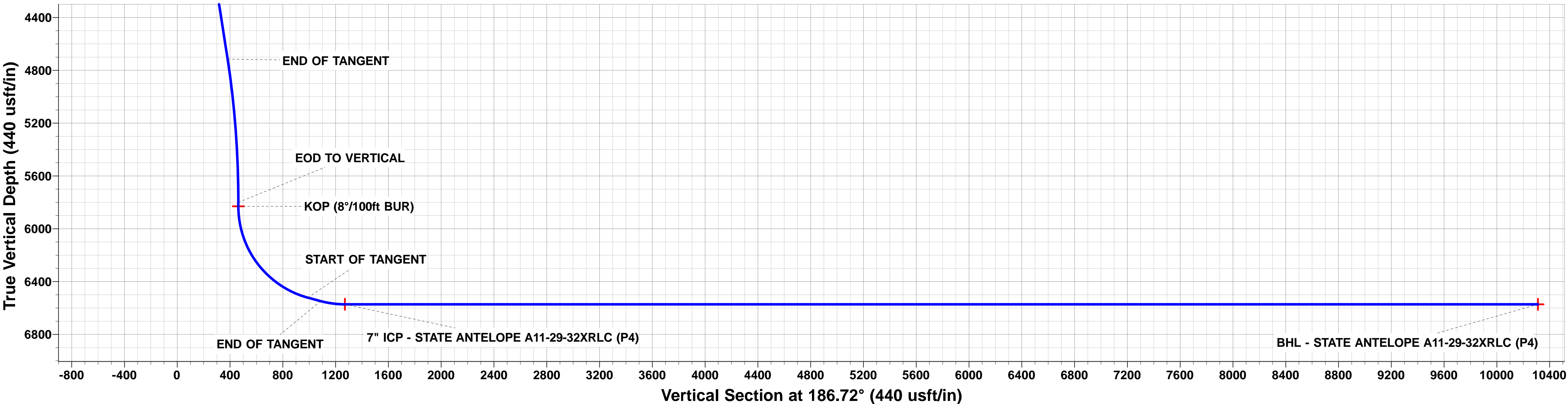
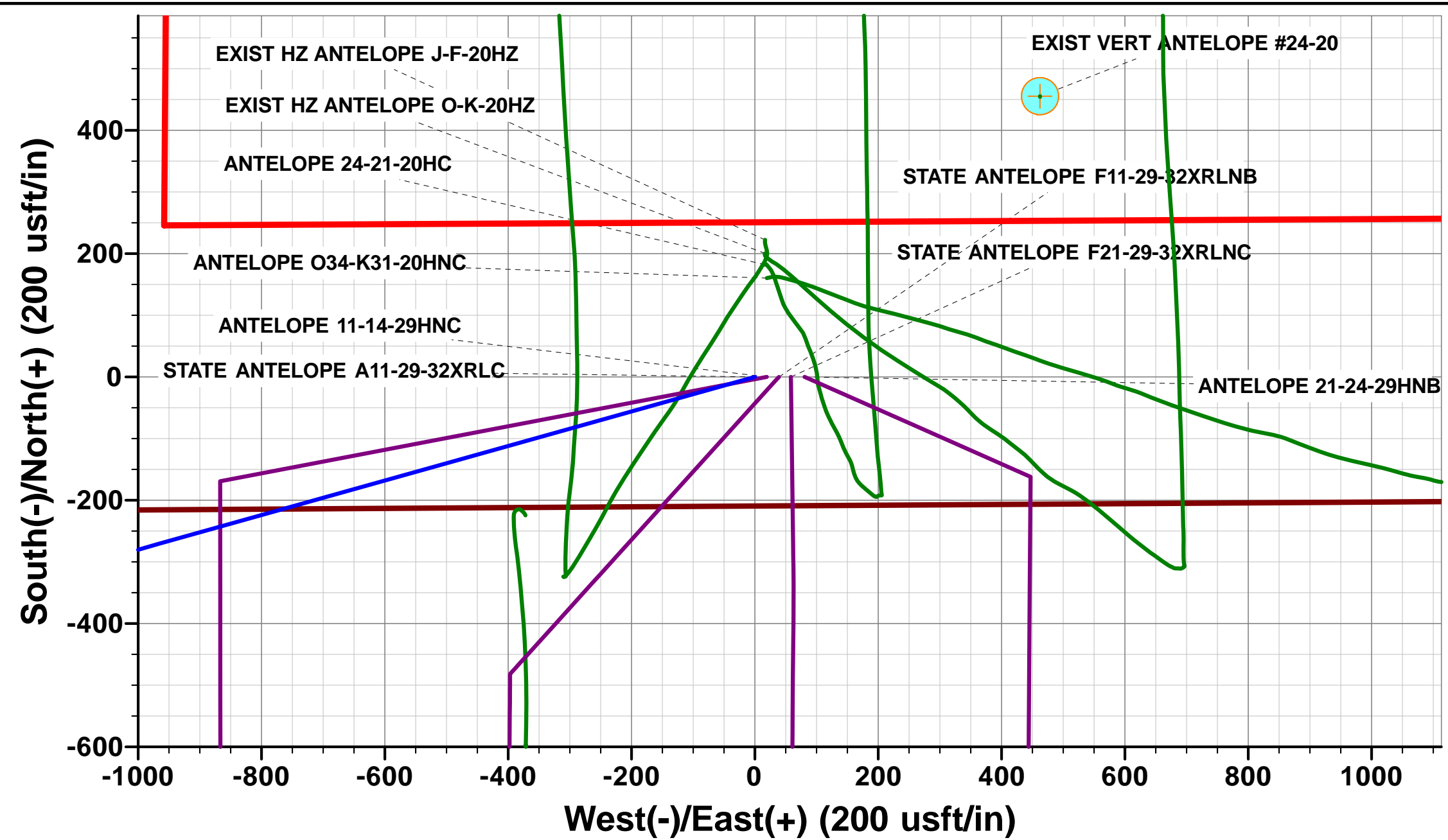
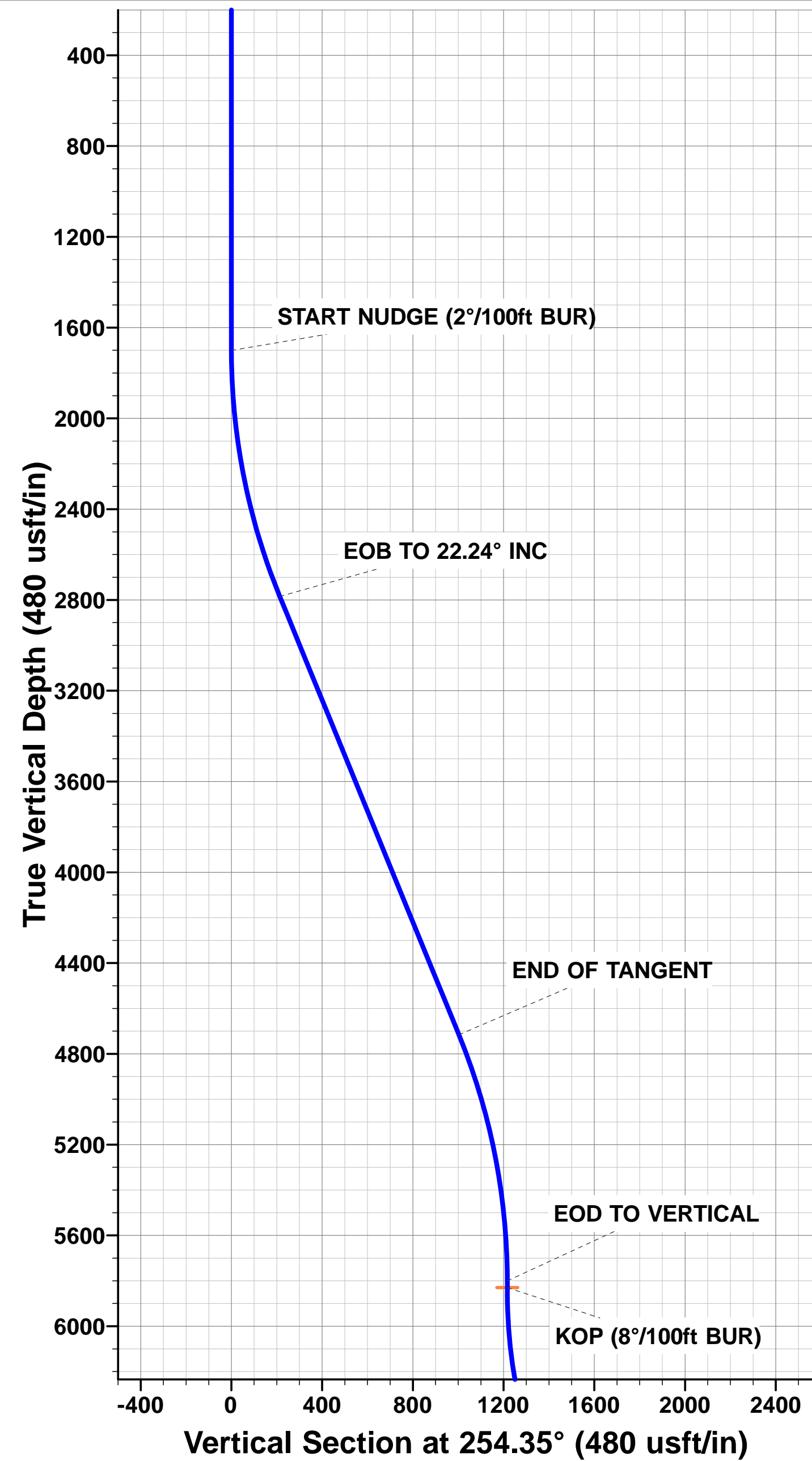
SHL: 210ft FSL & 1418ft FWL Sec 20

7" ICP: 925ft FNL & 252ft FWL Sec 29

BHL: 470ft FSL & 325ft FWL Sec 32

WELLBORE TARGET DETAILS (LAT/LONG)

Name	TVD	+N/-S	+E/-W	Latitude	Longitude
KOP - STATE ANTELOPE A11-29-32XRLC (P4)	5829.9	-328.0	-1171.0	40.377520	-104.355813
7" ICP - STATE ANTELOPE A11-29-32XRLC (P4)	6572.0	-1140.8	-1173.8	40.375288	-104.355823
BHL - STATE ANTELOPE A11-29-32XRLC (P4)	6572.0	-10240.7	-1206.9	40.350310	-104.355940



Database:	EDM 5000.1 Single User Db	Local Co-ordinate Reference:	Well STATE ANTELOPE A11-29-32XRLC
Company:	BONANZA CREEK ENERGY INC.	TVD Reference:	KB-EST @ 4682.0usft (Original Well Elev)
Project:	WELD COUNTY, COLORADO (NAD 83)	MD Reference:	KB-EST @ 4682.0usft (Original Well Elev)
Site:	SE SW SEC. 20 T5N R62W 6th P.M.	North Reference:	True
Well:	STATE ANTELOPE A11-29-32XRLC	Survey Calculation Method:	Minimum Curvature
Wellbore:	ORIGINAL WELLBORE		
Design:	PROPOSAL #4		

Project	WELD COUNTY, COLORADO (NAD 83)		
Map System:	US State Plane 1983	System Datum:	Mean Sea Level
Geo Datum:	North American Datum 1983		
Map Zone:	Colorado Northern Zone		Using geodetic scale factor

Site	SE SW SEC. 20 T5N R62W 6th P.M.		
Site Position:		Northing:	1,382,952.91 usft
From:	Lat/Long	Easting:	3,319,945.73 usft
Position Uncertainty:	0.0 usft	Slot Radius:	1.10000ft
		Latitude:	40.378920
		Longitude:	-104.351550
		Grid Convergence:	0.74 °

Well	STATE ANTELOPE A11-29-32XRLC		
Well Position	+N/-S	-182.2 usft	Northing:
	+E/-W	-16.7 usft	Easting:
Position Uncertainty	0.0 usft	Wellhead Elevation:	usft
		Latitude:	40.378420
		Longitude:	-104.351610
		Ground Level:	4,665.0 usft

Wellbore	ORIGINAL WELLBORE				
Magnetics	Model Name	Sample Date	Declination (°)	Dip Angle (°)	Field Strength (nT)
	IGRF2015	22/10/2015	8.16	66.94	52,614

Design	PROPOSAL #4			
Audit Notes:				
Version:	Phase:	PROTOTYPE	Tie On Depth:	0.0
Vertical Section:	Depth From (TVD) (usft)	+N/-S (usft)	+E/-W (usft)	Direction (°)
	6,572.0	0.0	0.0	186.72

Plan Sections											
MD (usft)	Inc (°)	Azi (°)	Vertical Depth	SS (usft)	+N/-S (usft)	+E/-W (usft)	Dogleg Rate (°/100usf)	Build Rate (°/100usf)	Turn Rate (°/100usf)	TFO (°)	Target
0.0	0.00	0.00	0.0	-4,682.0	0.0	0.0	0.00	0.00	0.00	0.00	
1,700.0	0.00	0.00	1,700.0	-2,982.0	0.0	0.0	0.00	0.00	0.00	0.00	
2,812.1	22.24	254.35	2,784.4	-1,897.6	-57.5	-205.3	2.00	2.00	0.00	254.35	
4,898.5	22.24	254.35	4,715.5	33.5	-270.5	-965.7	0.00	0.00	0.00	0.00	
6,010.6	0.00	0.00	5,799.9	1,117.9	-328.0	-1,171.0	2.00	-2.00	0.00	180.00	
6,040.6	0.00	0.00	5,829.9	1,147.9	-328.0	-1,171.0	0.00	0.00	0.00	0.00	KOP - STATE ANTI
6,978.1	75.00	180.20	6,521.7	1,839.7	-858.8	-1,172.8	8.00	8.00	0.00	180.20	
7,078.1	75.00	180.20	6,547.6	1,865.6	-955.4	-1,173.2	0.00	0.00	0.00	0.00	
7,265.6	90.00	180.20	6,572.0	1,890.0	-1,140.8	-1,173.8	8.00	8.00	0.00	0.00	
16,365.5	90.00	180.22	6,572.0	1,890.0	-10,240.7	-1,206.9	0.00	0.00	0.00	90.93	BHL - STATE ANTI

Database:	EDM 5000.1 Single User Db	Local Co-ordinate Reference:	Well STATE ANTELOPE A11-29-32XRLC
Company:	BONANZA CREEK ENERGY INC.	TVD Reference:	KB-EST @ 4682.0usft (Original Well Elev)
Project:	WELD COUNTY, COLORADO (NAD 83)	MD Reference:	KB-EST @ 4682.0usft (Original Well Elev)
Site:	SE SW SEC. 20 T5N R62W 6th P.M.	North Reference:	True
Well:	STATE ANTELOPE A11-29-32XRLC	Survey Calculation Method:	Minimum Curvature
Wellbore:	ORIGINAL WELLBORE		
Design:	PROPOSAL #4		

Planned Survey

MD (usft)	Inc (°)	Azi (°)	TVD (usft)	SS (usft)	+N/-S (usft)	+E/-W (usft)	Vertical Section (usft)	Dogleg Rate (°/100usft)	Build Rate (°/100usft)	Turn Rate (°/100usft)
0.0	0.00	0.00	0.0	4,682.00	0.0	0.0	0.0	0.00	0.00	0.00
100.0	0.00	0.00	100.0	4,582.00	0.0	0.0	0.0	0.00	0.00	0.00
200.0	0.00	0.00	200.0	4,482.00	0.0	0.0	0.0	0.00	0.00	0.00
300.0	0.00	0.00	300.0	4,382.00	0.0	0.0	0.0	0.00	0.00	0.00
400.0	0.00	0.00	400.0	4,282.00	0.0	0.0	0.0	0.00	0.00	0.00
500.0	0.00	0.00	500.0	4,182.00	0.0	0.0	0.0	0.00	0.00	0.00
600.0	0.00	0.00	600.0	4,082.00	0.0	0.0	0.0	0.00	0.00	0.00
700.0	0.00	0.00	700.0	3,982.00	0.0	0.0	0.0	0.00	0.00	0.00
800.0	0.00	0.00	800.0	3,882.00	0.0	0.0	0.0	0.00	0.00	0.00
900.0	0.00	0.00	900.0	3,782.00	0.0	0.0	0.0	0.00	0.00	0.00
1,000.0	0.00	0.00	1,000.0	3,682.00	0.0	0.0	0.0	0.00	0.00	0.00
1,100.0	0.00	0.00	1,100.0	3,582.00	0.0	0.0	0.0	0.00	0.00	0.00
1,200.0	0.00	0.00	1,200.0	3,482.00	0.0	0.0	0.0	0.00	0.00	0.00
1,300.0	0.00	0.00	1,300.0	3,382.00	0.0	0.0	0.0	0.00	0.00	0.00
1,400.0	0.00	0.00	1,400.0	3,282.00	0.0	0.0	0.0	0.00	0.00	0.00
1,500.0	0.00	0.00	1,500.0	3,182.00	0.0	0.0	0.0	0.00	0.00	0.00
1,600.0	0.00	0.00	1,600.0	3,082.00	0.0	0.0	0.0	0.00	0.00	0.00
START NUDGE (2°/100ft BUR)										
1,700.0	0.00	0.00	1,700.0	2,982.00	0.0	0.0	0.0	0.00	0.00	0.00
1,800.0	2.00	254.35	1,800.0	2,882.02	-0.5	-1.7	0.7	2.00	2.00	0.00
1,900.0	4.00	254.35	1,899.8	2,782.16	-1.9	-6.7	2.7	2.00	2.00	0.00
2,000.0	6.00	254.35	1,999.5	2,682.55	-4.2	-15.1	6.0	2.00	2.00	0.00
2,100.0	8.00	254.35	2,098.7	2,583.30	-7.5	-26.8	10.6	2.00	2.00	0.00
2,200.0	10.00	254.35	2,197.5	2,484.53	-11.7	-41.9	16.6	2.00	2.00	0.00
2,300.0	12.00	254.35	2,295.6	2,386.38	-16.9	-60.3	23.8	2.00	2.00	0.00
2,400.0	14.00	254.35	2,393.1	2,288.94	-23.0	-81.9	32.4	2.00	2.00	0.00
2,500.0	16.00	254.35	2,489.6	2,192.36	-29.9	-106.9	42.2	2.00	2.00	0.00
2,600.0	18.00	254.35	2,585.3	2,096.73	-37.8	-135.0	53.4	2.00	2.00	0.00
2,700.0	20.00	254.35	2,679.8	2,002.18	-46.6	-166.4	65.8	2.00	2.00	0.00
2,800.0	22.00	254.35	2,773.2	1,908.83	-56.3	-200.9	79.4	2.00	2.00	0.00
EOB TO 22.24° INC										
2,812.1	22.24	254.35	2,784.4	1,897.62	-57.5	-205.3	81.1	2.00	2.00	0.00
2,900.0	22.24	254.35	2,865.7	1,816.26	-66.5	-237.3	93.8	0.00	0.00	0.00
3,000.0	22.24	254.35	2,958.3	1,723.70	-76.7	-273.7	108.2	0.00	0.00	0.00
3,100.0	22.24	254.35	3,050.9	1,631.14	-86.9	-310.2	122.6	0.00	0.00	0.00
3,200.0	22.24	254.35	3,143.4	1,538.58	-97.1	-346.6	137.0	0.00	0.00	0.00
3,300.0	22.24	254.35	3,236.0	1,446.03	-107.3	-383.1	151.4	0.00	0.00	0.00
3,400.0	22.24	254.35	3,328.5	1,353.47	-117.5	-419.5	165.8	0.00	0.00	0.00
3,500.0	22.24	254.35	3,421.1	1,260.91	-127.7	-456.0	180.2	0.00	0.00	0.00
3,600.0	22.24	254.35	3,513.7	1,168.35	-137.9	-492.4	194.6	0.00	0.00	0.00
3,700.0	22.24	254.35	3,606.2	1,075.79	-148.1	-528.9	209.0	0.00	0.00	0.00
3,800.0	22.24	254.35	3,698.8	983.23	-158.4	-565.3	223.4	0.00	0.00	0.00
3,900.0	22.24	254.35	3,791.3	890.67	-168.6	-601.8	237.8	0.00	0.00	0.00
4,000.0	22.24	254.35	3,883.9	798.11	-178.8	-638.2	252.2	0.00	0.00	0.00
4,100.0	22.24	254.35	3,976.4	705.55	-189.0	-674.7	266.7	0.00	0.00	0.00
4,200.0	22.24	254.35	4,069.0	612.99	-199.2	-711.1	281.1	0.00	0.00	0.00
4,300.0	22.24	254.35	4,161.6	520.43	-209.4	-747.6	295.5	0.00	0.00	0.00
4,400.0	22.24	254.35	4,254.1	427.88	-219.6	-784.0	309.9	0.00	0.00	0.00
4,500.0	22.24	254.35	4,346.7	335.32	-229.8	-820.5	324.3	0.00	0.00	0.00
4,600.0	22.24	254.35	4,439.2	242.76	-240.0	-856.9	338.7	0.00	0.00	0.00
4,700.0	22.24	254.35	4,531.8	150.20	-250.2	-893.4	353.1	0.00	0.00	0.00
4,800.0	22.24	254.35	4,624.4	57.64	-260.5	-929.8	367.5	0.00	0.00	0.00

END OF TANGENT

Database:	EDM 5000.1 Single User Db	Local Co-ordinate Reference:	Well STATE ANTELOPE A11-29-32XRLC
Company:	BONANZA CREEK ENERGY INC.	TVD Reference:	KB-EST @ 4682.0usft (Original Well Elev)
Project:	WELD COUNTY, COLORADO (NAD 83)	MD Reference:	KB-EST @ 4682.0usft (Original Well Elev)
Site:	SE SW SEC. 20 T5N R62W 6th P.M.	North Reference:	True
Well:	STATE ANTELOPE A11-29-32XRLC	Survey Calculation Method:	Minimum Curvature
Wellbore:	ORIGINAL WELLBORE		
Design:	PROPOSAL #4		

Planned Survey

MD (usft)	Inc (°)	Azi (°)	TVD (usft)	SS (usft)	+N/-S (usft)	+E/-W (usft)	Vertical Section (usft)	Dogleg Rate (°/100usft)	Build Rate (°/100usft)	Turn Rate (°/100usft)
4,898.5	22.24	254.35	4,715.5	-33.53	-270.5	-965.7	381.7	0.00	0.00	0.00
4,900.0	22.21	254.35	4,716.9	-34.92	-270.7	-966.3	381.9	2.03	-2.03	0.00
5,000.0	20.21	254.35	4,810.1	-128.14	-280.4	-1,001.1	395.7	2.00	-2.00	0.00
5,100.0	18.21	254.35	4,904.6	-222.57	-289.3	-1,032.8	408.2	2.00	-2.00	0.00
5,200.0	16.21	254.35	5,000.1	-318.08	-297.3	-1,061.3	419.4	2.00	-2.00	0.00
5,300.0	14.21	254.35	5,096.6	-414.58	-304.4	-1,086.6	429.4	2.00	-2.00	0.00
5,400.0	12.21	254.35	5,193.9	-511.92	-310.5	-1,108.6	438.1	2.00	-2.00	0.00
5,500.0	10.21	254.35	5,292.0	-610.01	-315.8	-1,127.3	445.5	2.00	-2.00	0.00
5,600.0	8.21	254.35	5,390.7	-708.72	-320.1	-1,142.7	451.6	2.00	-2.00	0.00
5,700.0	6.21	254.35	5,489.9	-807.92	-323.5	-1,154.8	456.4	2.00	-2.00	0.00
5,800.0	4.21	254.35	5,589.5	-907.50	-325.9	-1,163.5	459.9	2.00	-2.00	0.00
5,900.0	2.21	254.35	5,689.3	-1,007.34	-327.4	-1,168.9	462.0	2.00	-2.00	0.00
6,000.0	0.21	254.35	5,789.3	-1,107.31	-328.0	-1,171.0	462.8	2.00	-2.00	0.00
EOD TO VERTICAL										
6,010.6	0.00	0.00	5,799.9	-1,117.91	-328.0	-1,171.0	462.8	2.00	-2.00	0.00
KOP (8°/100ft BUR)										
6,040.6	0.00	0.00	5,829.9	-1,147.91	-328.0	-1,171.0	462.8	0.00	0.00	0.00
6,100.0	4.75	180.20	5,889.2	-1,207.24	-330.5	-1,171.0	465.2	8.00	8.00	0.00
6,200.0	12.75	180.20	5,988.0	-1,306.00	-345.7	-1,171.1	480.4	8.00	8.00	0.00
6,300.0	20.75	180.20	6,083.7	-1,401.68	-374.5	-1,171.2	509.0	8.00	8.00	0.00
6,400.0	28.75	180.20	6,174.4	-1,492.41	-416.3	-1,171.3	550.5	8.00	8.00	0.00
6,500.0	36.75	180.20	6,258.4	-1,576.45	-470.4	-1,171.5	604.2	8.00	8.00	0.00
6,600.0	44.75	180.20	6,334.1	-1,652.14	-535.6	-1,171.7	669.0	8.00	8.00	0.00
6,700.0	52.75	180.20	6,400.0	-1,718.02	-610.7	-1,172.0	743.7	8.00	8.00	0.00
6,800.0	60.75	180.20	6,454.8	-1,772.80	-694.3	-1,172.3	826.7	8.00	8.00	0.00
6,900.0	68.75	180.20	6,497.4	-1,815.41	-784.7	-1,172.6	916.5	8.00	8.00	0.00
START OF TANGENT										
6,978.1	75.00	180.20	6,521.7	-1,839.70	-858.8	-1,172.9	990.2	8.00	8.00	0.00
7,000.0	75.00	180.20	6,527.4	-1,845.36	-880.0	-1,172.9	1,011.2	0.00	0.00	0.00
END OF TANGENT										
7,078.1	75.00	180.20	6,547.6	-1,865.58	-955.4	-1,173.2	1,086.2	0.00	0.00	0.00
7,100.0	76.75	180.20	6,552.9	-1,870.92	-976.7	-1,173.3	1,107.3	8.00	8.00	0.00
7,200.0	84.75	180.20	6,569.0	-1,886.98	-1,075.3	-1,173.6	1,205.3	8.00	8.00	0.00
7" ICP - STATE ANTELOPE A11-29-32XRLC (P4)										
7,265.6	90.00	180.20	6,572.0	-1,889.98	-1,140.8	-1,173.8	1,270.3	8.00	8.00	0.00
7,300.0	90.00	180.20	6,572.0	-1,889.98	-1,175.2	-1,174.0	1,304.5	0.00	0.00	0.00
7,400.0	90.00	180.20	6,572.0	-1,889.98	-1,275.2	-1,174.3	1,403.9	0.00	0.00	0.00
7,500.0	90.00	180.20	6,572.0	-1,889.98	-1,375.2	-1,174.7	1,503.2	0.00	0.00	0.00
7,600.0	90.00	180.20	6,572.0	-1,889.98	-1,475.2	-1,175.0	1,602.6	0.00	0.00	0.00
7,700.0	90.00	180.20	6,572.0	-1,889.98	-1,575.2	-1,175.4	1,701.9	0.00	0.00	0.00
7,800.0	90.00	180.20	6,572.0	-1,889.98	-1,675.2	-1,175.7	1,801.3	0.00	0.00	0.00
7,900.0	90.00	180.20	6,572.0	-1,889.98	-1,775.2	-1,176.1	1,900.6	0.00	0.00	0.00
8,000.0	90.00	180.20	6,572.0	-1,889.98	-1,875.2	-1,176.4	2,000.0	0.00	0.00	0.00
8,100.0	90.00	180.20	6,572.0	-1,889.98	-1,975.2	-1,176.8	2,099.3	0.00	0.00	0.00
8,200.0	90.00	180.20	6,572.0	-1,889.98	-2,075.2	-1,177.1	2,198.7	0.00	0.00	0.00
8,300.0	90.00	180.20	6,572.0	-1,889.98	-2,175.2	-1,177.5	2,298.1	0.00	0.00	0.00
8,400.0	90.00	180.20	6,572.0	-1,889.98	-2,275.2	-1,177.8	2,397.4	0.00	0.00	0.00
8,500.0	90.00	180.20	6,572.0	-1,889.98	-2,375.2	-1,178.2	2,496.8	0.00	0.00	0.00
8,600.0	90.00	180.20	6,572.0	-1,889.98	-2,475.2	-1,178.5	2,596.1	0.00	0.00	0.00
8,700.0	90.00	180.20	6,572.0	-1,889.98	-2,575.2	-1,178.9	2,695.5	0.00	0.00	0.00
8,800.0	90.00	180.20	6,572.0	-1,889.98	-2,675.2	-1,179.2	2,794.8	0.00	0.00	0.00
8,900.0	90.00	180.20	6,572.0	-1,889.98	-2,775.2	-1,179.6	2,894.2	0.00	0.00	0.00
9,000.0	90.00	180.20	6,572.0	-1,889.98	-2,875.2	-1,179.9	2,993.5	0.00	0.00	0.00
9,100.0	90.00	180.20	6,572.0	-1,889.98	-2,975.2	-1,180.3	3,092.9	0.00	0.00	0.00

Database:	EDM 5000.1 Single User Db	Local Co-ordinate Reference:	Well STATE ANTELOPE A11-29-32XRLC
Company:	BONANZA CREEK ENERGY INC.	TVD Reference:	KB-EST @ 4682.0usft (Original Well Elev)
Project:	WELD COUNTY, COLORADO (NAD 83)	MD Reference:	KB-EST @ 4682.0usft (Original Well Elev)
Site:	SE SW SEC. 20 T5N R62W 6th P.M.	North Reference:	True
Well:	STATE ANTELOPE A11-29-32XRLC	Survey Calculation Method:	Minimum Curvature
Wellbore:	ORIGINAL WELLBORE		
Design:	PROPOSAL #4		

Planned Survey										
MD (usft)	Inc (°)	Azi (°)	TVD (usft)	SS (usft)	+N/-S (usft)	+E/-W (usft)	Vertical Section (usft)	Dogleg Rate (°/100usft)	Build Rate (°/100usft)	Turn Rate (°/100usft)
9,200.0	90.00	180.20	6,572.0	-1,889.98	-3,075.2	-1,180.6	3,192.2	0.00	0.00	0.00
9,300.0	90.00	180.20	6,572.0	-1,889.98	-3,175.2	-1,181.0	3,291.6	0.00	0.00	0.00
9,400.0	90.00	180.20	6,572.0	-1,889.98	-3,275.2	-1,181.4	3,390.9	0.00	0.00	0.00
9,500.0	90.00	180.20	6,572.0	-1,889.98	-3,375.2	-1,181.7	3,490.3	0.00	0.00	0.00
9,600.0	90.00	180.20	6,572.0	-1,889.98	-3,475.2	-1,182.1	3,589.6	0.00	0.00	0.00
9,700.0	90.00	180.20	6,572.0	-1,889.98	-3,575.2	-1,182.4	3,689.0	0.00	0.00	0.00
9,800.0	90.00	180.20	6,572.0	-1,889.98	-3,675.2	-1,182.8	3,788.4	0.00	0.00	0.00
9,900.0	90.00	180.20	6,572.0	-1,889.98	-3,775.2	-1,183.1	3,887.7	0.00	0.00	0.00
10,000.0	90.00	180.20	6,572.0	-1,889.98	-3,875.2	-1,183.5	3,987.1	0.00	0.00	0.00
10,100.0	90.00	180.21	6,572.0	-1,889.98	-3,975.2	-1,183.9	4,086.4	0.00	0.00	0.00
10,200.0	90.00	180.21	6,572.0	-1,889.98	-4,075.2	-1,184.2	4,185.8	0.00	0.00	0.00
10,300.0	90.00	180.21	6,572.0	-1,889.98	-4,175.2	-1,184.6	4,285.1	0.00	0.00	0.00
10,400.0	90.00	180.21	6,572.0	-1,889.98	-4,275.2	-1,184.9	4,384.5	0.00	0.00	0.00
10,500.0	90.00	180.21	6,572.0	-1,889.98	-4,375.2	-1,185.3	4,483.8	0.00	0.00	0.00
10,600.0	90.00	180.21	6,572.0	-1,889.98	-4,475.2	-1,185.6	4,583.2	0.00	0.00	0.00
10,700.0	90.00	180.21	6,572.0	-1,889.98	-4,575.2	-1,186.0	4,682.5	0.00	0.00	0.00
10,800.0	90.00	180.21	6,572.0	-1,889.98	-4,675.2	-1,186.4	4,781.9	0.00	0.00	0.00
10,900.0	90.00	180.21	6,572.0	-1,889.98	-4,775.2	-1,186.7	4,881.3	0.00	0.00	0.00
11,000.0	90.00	180.21	6,572.0	-1,889.98	-4,875.2	-1,187.1	4,980.6	0.00	0.00	0.00
11,100.0	90.00	180.21	6,572.0	-1,889.98	-4,975.2	-1,187.4	5,080.0	0.00	0.00	0.00
11,200.0	90.00	180.21	6,572.0	-1,889.98	-5,075.2	-1,187.8	5,179.3	0.00	0.00	0.00
11,300.0	90.00	180.21	6,572.0	-1,889.98	-5,175.2	-1,188.2	5,278.7	0.00	0.00	0.00
11,400.0	90.00	180.21	6,572.0	-1,889.98	-5,275.2	-1,188.5	5,378.0	0.00	0.00	0.00
11,500.0	90.00	180.21	6,572.0	-1,889.98	-5,375.2	-1,188.9	5,477.4	0.00	0.00	0.00
11,600.0	90.00	180.21	6,572.0	-1,889.98	-5,475.2	-1,189.3	5,576.7	0.00	0.00	0.00
11,700.0	90.00	180.21	6,572.0	-1,889.98	-5,575.2	-1,189.6	5,676.1	0.00	0.00	0.00
11,800.0	90.00	180.21	6,572.0	-1,889.98	-5,675.2	-1,190.0	5,775.4	0.00	0.00	0.00
11,900.0	90.00	180.21	6,572.0	-1,889.98	-5,775.2	-1,190.3	5,874.8	0.00	0.00	0.00
12,000.0	90.00	180.21	6,572.0	-1,889.98	-5,875.2	-1,190.7	5,974.1	0.00	0.00	0.00
12,100.0	90.00	180.21	6,572.0	-1,889.99	-5,975.2	-1,191.1	6,073.5	0.00	0.00	0.00
12,200.0	90.00	180.21	6,572.0	-1,889.99	-6,075.2	-1,191.4	6,172.9	0.00	0.00	0.00
12,300.0	90.00	180.21	6,572.0	-1,889.99	-6,175.2	-1,191.8	6,272.2	0.00	0.00	0.00
12,400.0	90.00	180.21	6,572.0	-1,889.99	-6,275.2	-1,192.2	6,371.6	0.00	0.00	0.00
12,500.0	90.00	180.21	6,572.0	-1,889.99	-6,375.2	-1,192.5	6,470.9	0.00	0.00	0.00
12,600.0	90.00	180.21	6,572.0	-1,889.99	-6,475.2	-1,192.9	6,570.3	0.00	0.00	0.00
12,700.0	90.00	180.21	6,572.0	-1,889.99	-6,575.2	-1,193.3	6,669.6	0.00	0.00	0.00
12,800.0	90.00	180.21	6,572.0	-1,889.99	-6,675.2	-1,193.6	6,769.0	0.00	0.00	0.00
12,900.0	90.00	180.21	6,572.0	-1,889.99	-6,775.2	-1,194.0	6,868.3	0.00	0.00	0.00
13,000.0	90.00	180.21	6,572.0	-1,889.99	-6,875.2	-1,194.4	6,967.7	0.00	0.00	0.00
13,100.0	90.00	180.21	6,572.0	-1,889.99	-6,975.2	-1,194.7	7,067.1	0.00	0.00	0.00
13,200.0	90.00	180.21	6,572.0	-1,889.99	-7,075.2	-1,195.1	7,166.4	0.00	0.00	0.00
13,300.0	90.00	180.21	6,572.0	-1,889.99	-7,175.2	-1,195.5	7,265.8	0.00	0.00	0.00
13,400.0	90.00	180.21	6,572.0	-1,889.99	-7,275.2	-1,195.8	7,365.1	0.00	0.00	0.00
13,500.0	90.00	180.21	6,572.0	-1,889.99	-7,375.2	-1,196.2	7,464.5	0.00	0.00	0.00
13,600.0	90.00	180.21	6,572.0	-1,889.99	-7,475.2	-1,196.6	7,563.8	0.00	0.00	0.00
13,700.0	90.00	180.21	6,572.0	-1,889.99	-7,575.2	-1,196.9	7,663.2	0.00	0.00	0.00
13,800.0	90.00	180.21	6,572.0	-1,889.99	-7,675.2	-1,197.3	7,762.5	0.00	0.00	0.00
13,900.0	90.00	180.21	6,572.0	-1,889.99	-7,775.2	-1,197.7	7,861.9	0.00	0.00	0.00
14,000.0	90.00	180.21	6,572.0	-1,889.99	-7,875.2	-1,198.0	7,961.2	0.00	0.00	0.00
14,100.0	90.00	180.21	6,572.0	-1,889.99	-7,975.2	-1,198.4	8,060.6	0.00	0.00	0.00
14,200.0	90.00	180.21	6,572.0	-1,889.99	-8,075.2	-1,198.8	8,160.0	0.00	0.00	0.00
14,300.0	90.00	180.21	6,572.0	-1,889.99	-8,175.2	-1,199.2	8,259.3	0.00	0.00	0.00
14,400.0	90.00	180.21	6,572.0	-1,889.99	-8,275.2	-1,199.5	8,358.7	0.00	0.00	0.00
14,500.0	90.00	180.21	6,572.0	-1,889.99	-8,375.2	-1,199.9	8,458.0	0.00	0.00	0.00

Database:	EDM 5000.1 Single User Db	Local Co-ordinate Reference:	Well STATE ANTELOPE A11-29-32XRLC
Company:	BONANZA CREEK ENERGY INC.	TVD Reference:	KB-EST @ 4682.0usft (Original Well Elev)
Project:	WELD COUNTY, COLORADO (NAD 83)	MD Reference:	KB-EST @ 4682.0usft (Original Well Elev)
Site:	SE SW SEC. 20 T5N R62W 6th P.M.	North Reference:	True
Well:	STATE ANTELOPE A11-29-32XRLC	Survey Calculation Method:	Minimum Curvature
Wellbore:	ORIGINAL WELLBORE		
Design:	PROPOSAL #4		

Planned Survey

MD (usft)	Inc (°)	Azi (°)	TVD (usft)	SS (usft)	+N/-S (usft)	+E/-W (usft)	Vertical Section (usft)	Dogleg Rate (°/100usft)	Build Rate (°/100usft)	Turn Rate (°/100usft)
14,600.0	90.00	180.21	6,572.0	-1,889.99	-8,475.1	-1,200.3	8,557.4	0.00	0.00	0.00
14,700.0	90.00	180.21	6,572.0	-1,889.99	-8,575.1	-1,200.6	8,656.7	0.00	0.00	0.00
14,800.0	90.00	180.21	6,572.0	-1,889.99	-8,675.1	-1,201.0	8,756.1	0.00	0.00	0.00
14,900.0	90.00	180.21	6,572.0	-1,889.99	-8,775.1	-1,201.4	8,855.4	0.00	0.00	0.00
15,000.0	90.00	180.21	6,572.0	-1,889.99	-8,875.1	-1,201.8	8,954.8	0.00	0.00	0.00
15,100.0	90.00	180.21	6,572.0	-1,889.99	-8,975.1	-1,202.1	9,054.2	0.00	0.00	0.00
15,200.0	90.00	180.21	6,572.0	-1,890.00	-9,075.1	-1,202.5	9,153.5	0.00	0.00	0.00
15,300.0	90.00	180.21	6,572.0	-1,890.00	-9,175.1	-1,202.9	9,252.9	0.00	0.00	0.00
15,400.0	90.00	180.21	6,572.0	-1,890.00	-9,275.1	-1,203.3	9,352.2	0.00	0.00	0.00
15,500.0	90.00	180.21	6,572.0	-1,890.00	-9,375.1	-1,203.6	9,451.6	0.00	0.00	0.00
15,600.0	90.00	180.21	6,572.0	-1,890.00	-9,475.1	-1,204.0	9,550.9	0.00	0.00	0.00
15,700.0	90.00	180.21	6,572.0	-1,890.00	-9,575.1	-1,204.4	9,650.3	0.00	0.00	0.00
15,800.0	90.00	180.22	6,572.0	-1,890.00	-9,675.1	-1,204.8	9,749.7	0.00	0.00	0.00
15,900.0	90.00	180.22	6,572.0	-1,890.00	-9,775.1	-1,205.1	9,849.0	0.00	0.00	0.00
16,000.0	90.00	180.22	6,572.0	-1,890.00	-9,875.1	-1,205.5	9,948.4	0.00	0.00	0.00
16,100.0	90.00	180.22	6,572.0	-1,890.00	-9,975.1	-1,205.9	10,047.7	0.00	0.00	0.00
16,200.0	90.00	180.22	6,572.0	-1,890.00	-10,075.1	-1,206.3	10,147.1	0.00	0.00	0.00
16,300.0	90.00	180.22	6,572.0	-1,890.00	-10,175.1	-1,206.6	10,246.4	0.00	0.00	0.00
BHL - STATE ANTELOPE A11-29-32XRLC (P4)										
16,365.5	90.00	180.22	6,572.0	-1,890.00	-10,240.6	-1,206.9	10,311.5	0.00	0.00	0.00

Plan Annotations

MD (usft)	TVD (usft)	Local Coordinates		Comment
		+N/-S (usft)	+E/-W (usft)	
1,700.0	1,700.0	0.0	0.0	START NUDGE (2°/100ft BUR)
2,812.1	2,784.4	-57.5	-205.3	EOB TO 22.24° INC
4,898.5	4,715.5	-270.5	-965.7	END OF TANGENT
6,010.6	5,799.9	-328.0	-1,171.0	EOD TO VERTICAL
6,040.6	5,829.9	-328.0	-1,171.0	KOP (8°/100ft BUR)
6,978.1	6,521.7	-858.8	-1,172.9	START OF TANGENT
7,078.1	6,547.6	-955.4	-1,173.2	END OF TANGENT
7,265.6	6,572.0	-1,140.8	-1,173.8	7" ICP - STATE ANTELOPE A11-29-32XRLC (P4)
16,365.5	6,572.0	-10,240.6	-1,206.9	BHL - STATE ANTELOPE A11-29-32XRLC (P4)