



Lat40°, Inc. 6250 W. 10th Street, Unit 2, Greeley, CO 970-515-5294

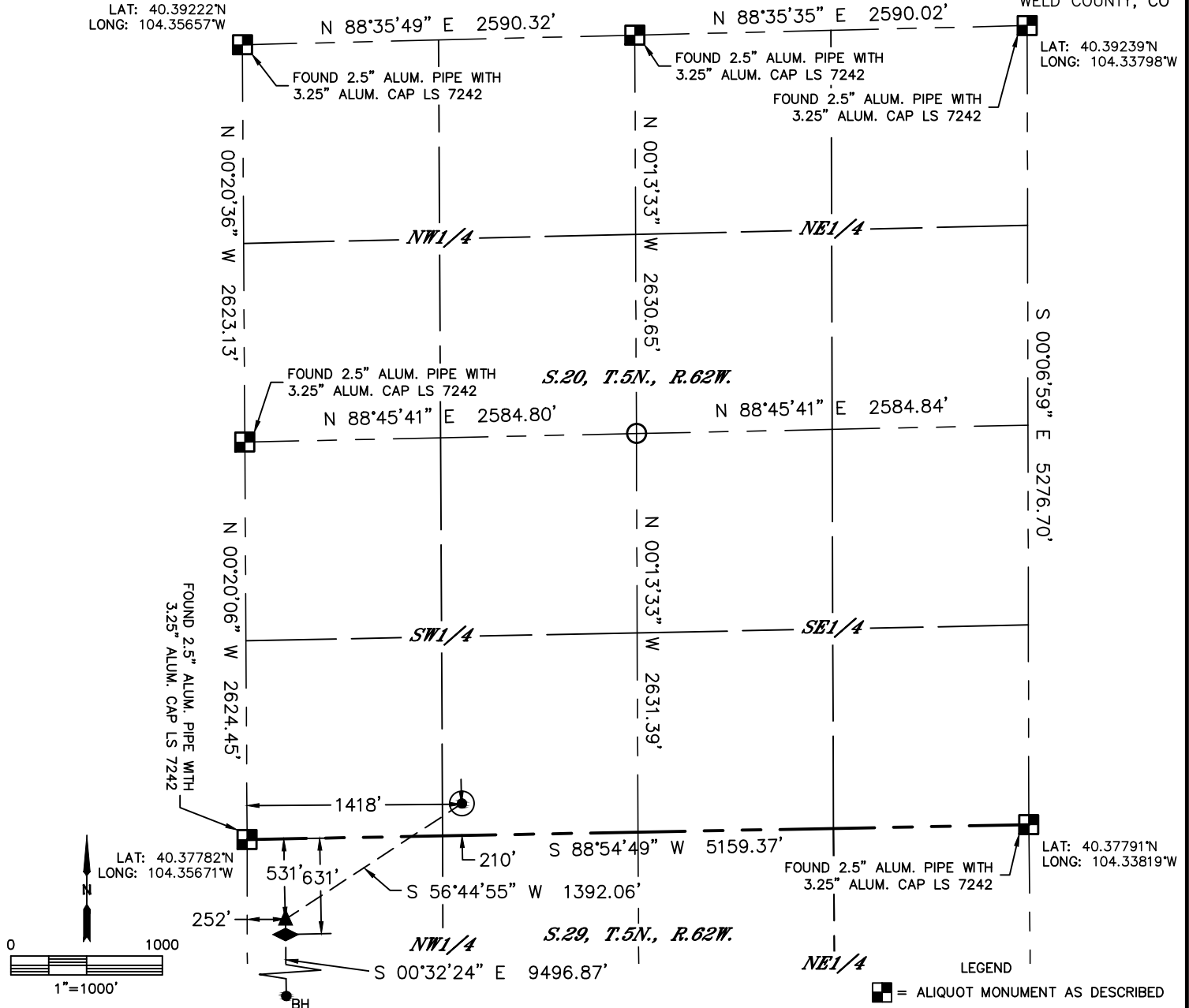
WELL LOCATION CERTIFICATE

STATE ANTELOPE A11-29-32XRLC

SECTION: 20
TOWNSHIP: 5N
RANGE: 62W
6TH. P.M.
WELD COUNTY, CO

LAT: 40.39222°N
LONG: 104.35657°W

LAT: 40.39239°N
LONG: 104.33798°W



CLIENT: BONANZA CREEK ENERGY				LANDMAN: KATEY KRUPKA		
INSTRUMENT OPERATOR: CHASE MILLER				SURVEY DATE: 11/30/2015		SURFACE USE: EX. PAD/RANGELAND
SHL FOOTAGE	SHL LAT°	SHL LONG°	SHL PDOP	SHL ELEV (FT.)	SHL 1/4/1/4	SHL S-T-R
210	FSL	1418	FWL	40.37842	-104.35161	2.2
						4665
						SESW
						20-5-62

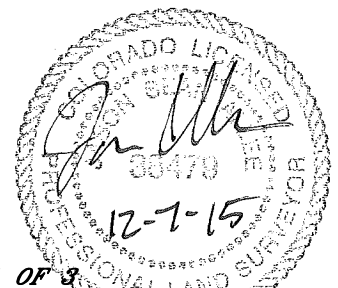
BHL FOOTAGE	BHL LAT°	BHL LONG°	BHL S-T-R	T1 LAT°	T1 LONG°	T1 S-T-R
470	FSL	325	FWL	40.35031	-104.35594	32-5-62
						40.37637
						-104.35582
						29-5-62

NOTE:

- 1) Bearings shown are Grid Bearings of the Colorado State Plane Coordinate System, North Zone, North American Datum 1983. The lineal dimensions as contained herein are based upon the "U.S. Survey Foot."
- 2) Distances to section lines measured at 90 degrees from said section lines.
- 3) Ground elevations are based on an observed GPS elevation (NAVD 1988 DATUM).
- 4) Latitude and Longitude shown are (NAD 83 DATUM).
- 5) IMPROVEMENTS: See LOCATION DRAWING for all visible improvements within 500' of oil and gas location.
- 6) This map does not represent a boundary survey.

NEAREST CULTURAL ITEMS	
BUILDING	±4228' W
BUILDING UNIT	5280' +
HIGH OCCUPANCY BUILDING UNIT	5280' +
DESIGNATED OUTSIDE ACTIVITY AREA	5280' +
PUBLIC ROAD	5280' +
ABOVE GROUND UTILITY	±533' NW
RAILROAD	5280' +
PROPERTY LINE	±210' S

- LEGEND
- = ALIQUOT MONUMENT AS DESCRIBED
 - = CALCULATED POSITION
 - = SURFACE HOLE LOCATION (SHL)
 - ▲ = TARGET 1 LOCATION (T1)
 - ◆ = TOP OF PRODUCTION ZONE (TPZ)
 - _{BH} = BOTTOM HOLE LOCATION (BHL)



SHEET 1 OF 3

Jason S. Allee—On behalf of Lat40°, Inc.
Colorado Licensed Professional Land Surveyor No. 38479
DATE: rev12/4/2015
PROJECT#: 2015061

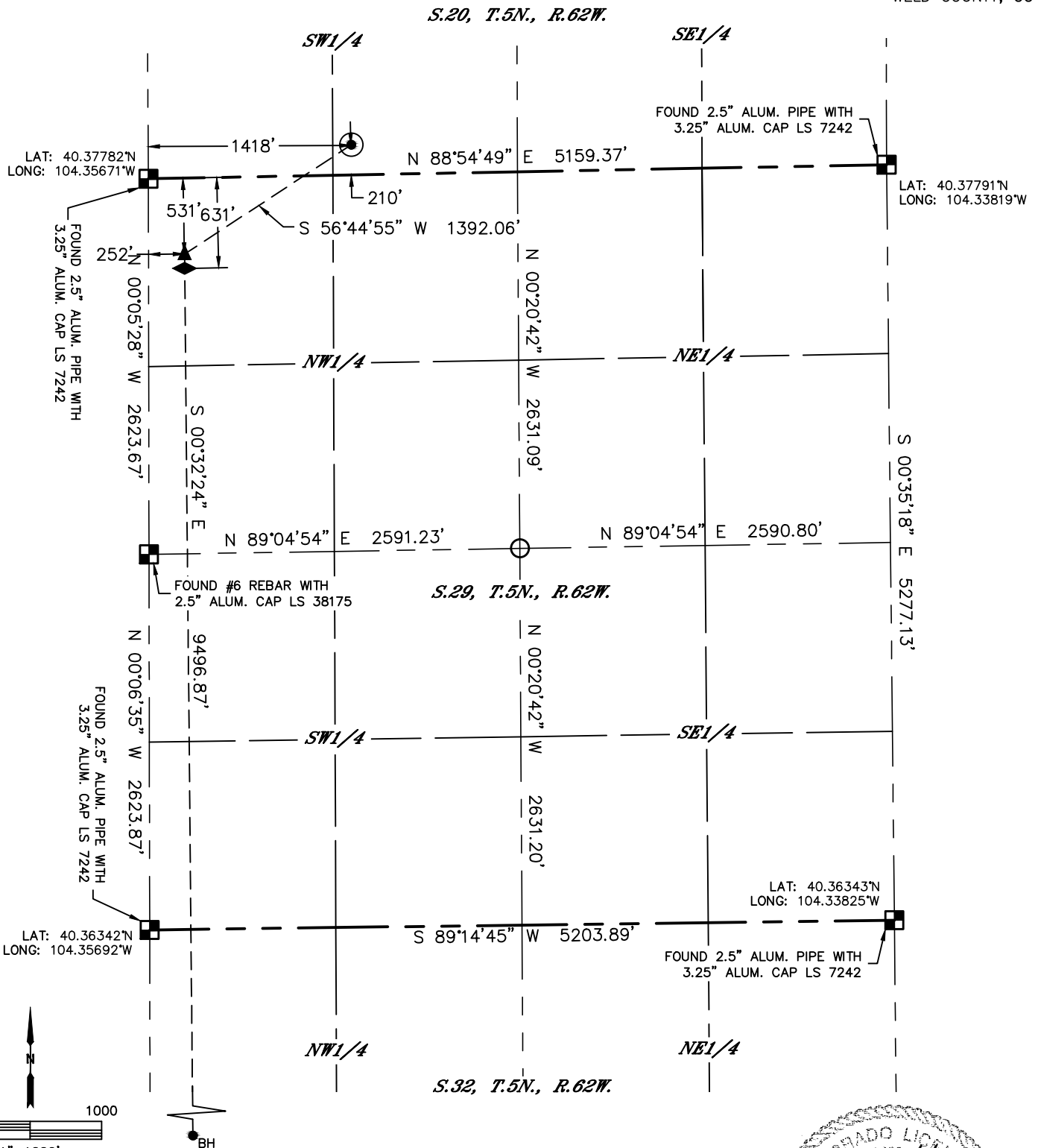


Lat40°, Inc. 6250 W. 10th Street, Unit 2, Greeley, CO 970-515-5294

WELL LOCATION CERTIFICATE

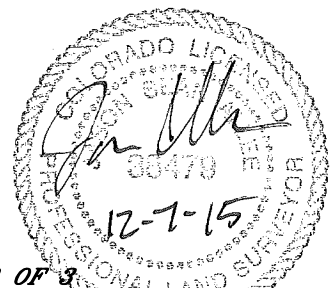
STATE ANTELOPE A11-29-32XRLC

SECTION: 20
TOWNSHIP: 5N
RANGE: 62W
6TH. P.M.
WELD COUNTY, CO



LEGEND

- = ALIQUOT MONUMENT AS DESCRIBED
- = CALCULATED POSITION
- = SURFACE HOLE LOCATION (SHL)
- ▲ = TARGET 1 LOCATION (T1)
- ◆ = TOP OF PRODUCTION ZONE (TPZ)
- = BOTTOM HOLE LOCATION (BHL)



SHEET 2 OF 3

Jason S. Allee—On behalf of Lat40°, Inc.
Colorado Licensed Professional Land Surveyor No. 38479
DATE: rev12/4/2015
PROJECT#: 2015061

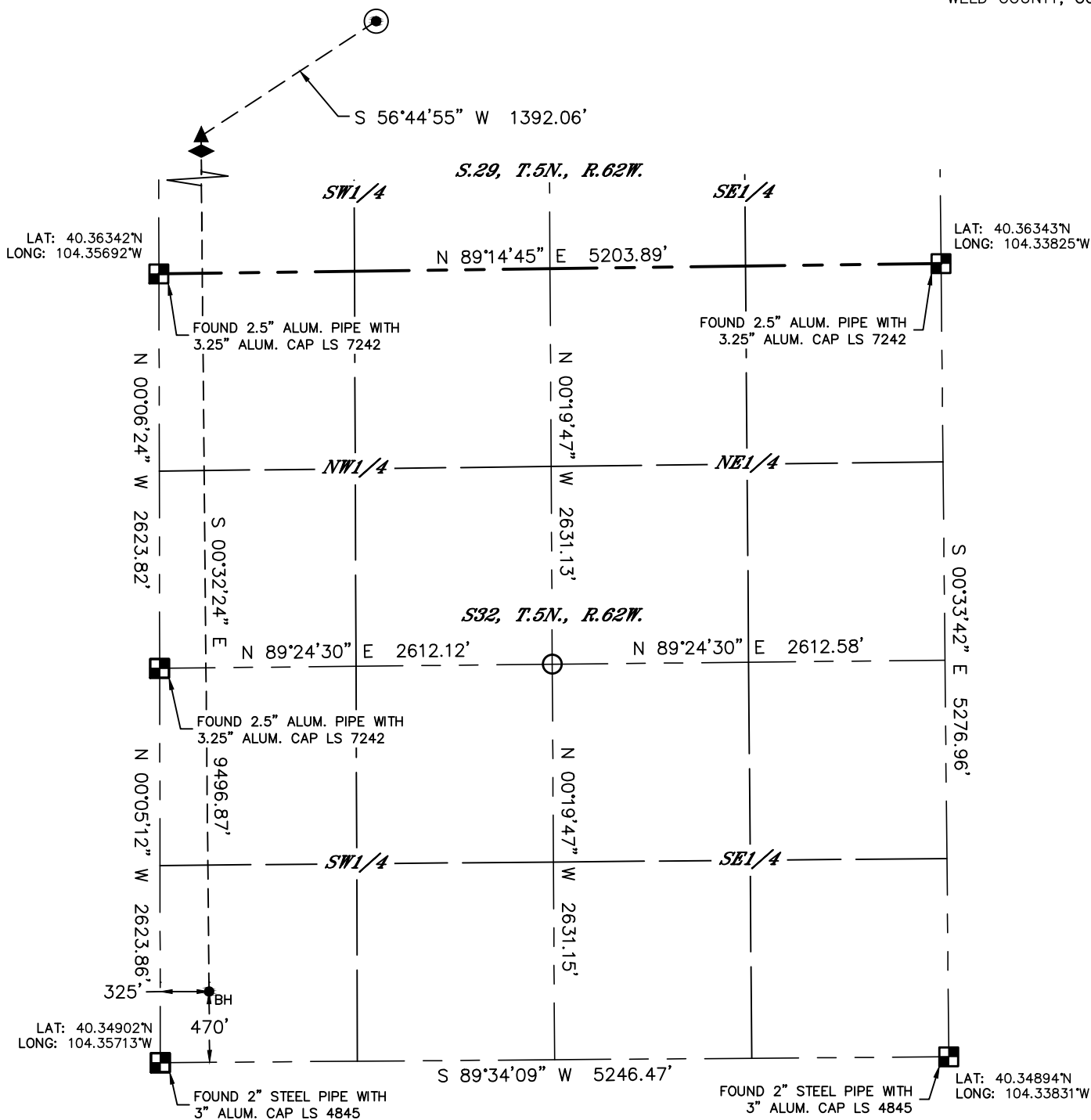


Lat40°, Inc. 6250 W. 10th Street, Unit 2, Greeley, CO 970-515-5294

WELL LOCATION CERTIFICATE

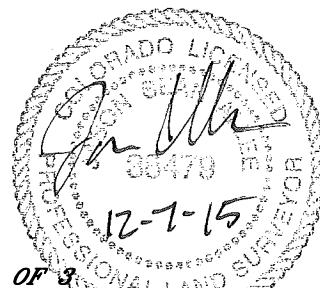
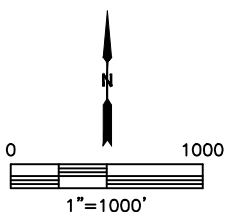
STATE ANTELOPE A11-29-32XRLC

SECTION: 20
TOWNSHIP: 5N
RANGE: 62W
6TH. P.M.
WELD COUNTY, CO



LEGEND

- = ALIQUOT MONUMENT AS DESCRIBED
- = CALCULATED POSITION
- = SURFACE HOLE LOCATION (SHL)
- ▲ = TARGET 1 LOCATION (T1)
- ◆ = TOP OF PRODUCTION ZONE (TPZ)
- = BOTTOM HOLE LOCATION (BHL)



SHEET 3 OF 3

Jason S. Allee—On behalf of Lat40°, Inc.
Colorado Licensed Professional Land Surveyor No. 38479
DATE: rev12/4/2015
PROJECT#: 2015061