



January 18, 2016

Mr. Paul Schwarz
Kerr-McGee Oil & Gas Onshore LP
1099 18th Street, Suite 1800
Denver, Colorado 80202

**RE: Colorado Oil & Gas Conservation Commission (COGCC)
Form 4 (Interim Reclamation Completion Notice)
Barefoot 32C-25HZ (Location: 332147)
Kerr-McGee Oil & Gas Onshore LP (Operator: 47120)**

Dear Mr. Schwarz:

Apex Companies, LLC (Apex) is pleased to present this letter to Kerr-McGee Oil & Gas Onshore LP (Kerr-McGee) documenting successful completion of interim reclamation efforts per COGCC Rule 1003 on the location specified above in Weld County, Colorado. Attached is a topographic map, which identifies the referenced location.

Based on communications with Kerr-McGee personnel and subsequent site inspections, Apex personnel confirmed that the unused portions of the reduced production footprint have been returned to crop land and agricultural use. Based on this result, interim reclamation as defined by COGCC Rule 1003.e (1) has been achieved. Photographs required by Rule 1003.e (3) are also attached along with a diagram illustrating photo origins.

Apex appreciates the opportunity to provide environmental consulting services to Kerr-McGee with this project. Should you have any questions or require additional information, please don't hesitate to contact me.

Sincerely,
Apex Companies, LLC

A handwritten signature in black ink, appearing to read 'Chris Hines', written over a horizontal line.

Chris Hines
Project Manager
970-261-1127
chris.hines@apexcos.com

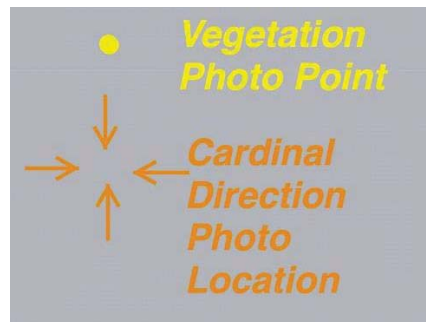
Attachments:

1. Site Diagram
2. Topographic Location Map
3. Inspection Photos



Vegetation Survey Site Map

Barefoot 32C-25HZ
(332147)

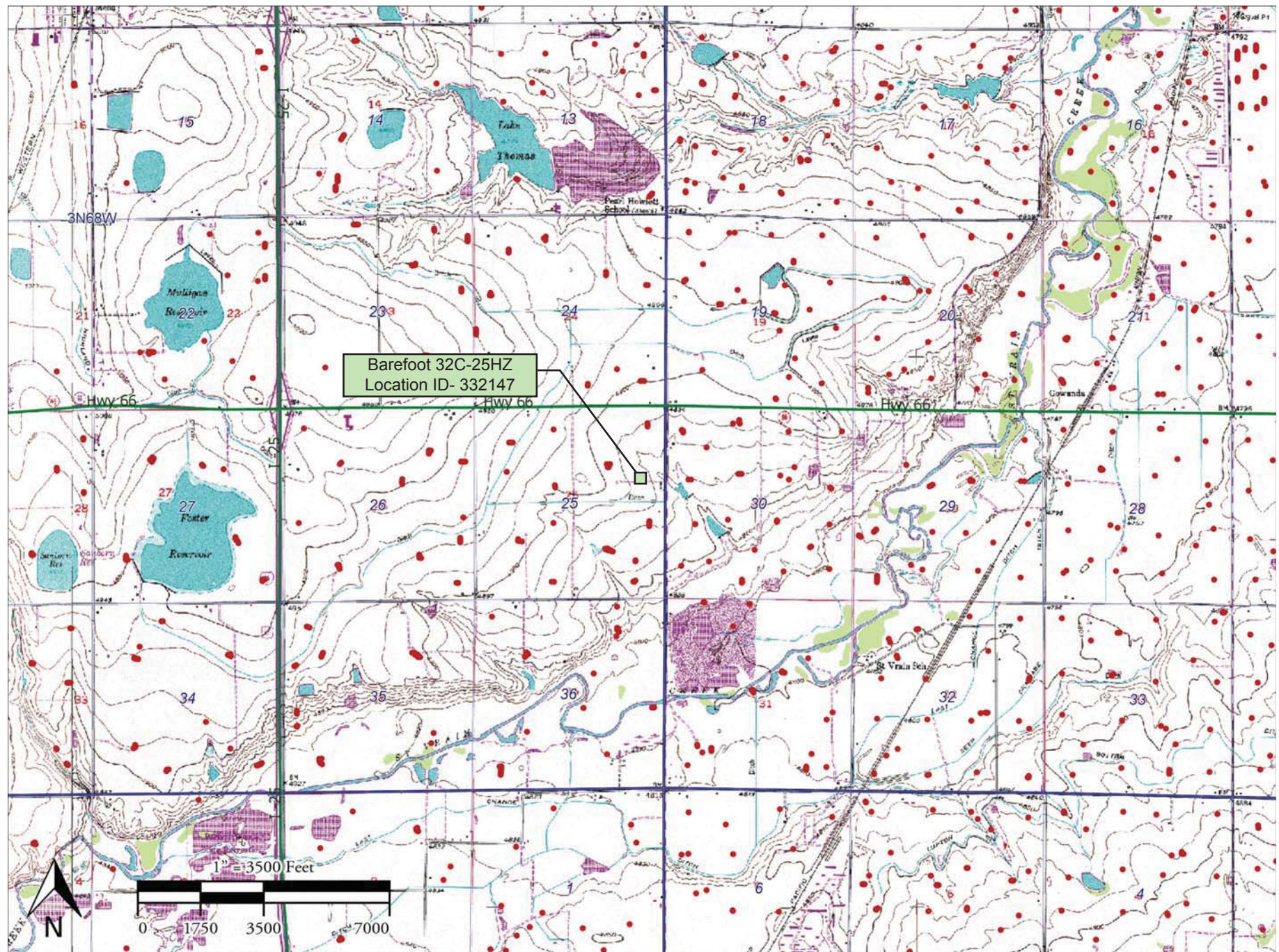


Legal Description: SENE, Sec 25,
T3N-R68W
County: Weld

Land Use: Cropland
Inspector: Jenny Schoedel
Assessment Date: July 15, 2015



Barefoot 32C-25HZ (332147) Topographic Location Map



Kerr McGee Oil & Gas Onshore LP
Form 4 (Interim Reclamation Completion Notice)
Barefoot 32C-25HZ (332147)

Vegetation Assessment
Completed - July 15, 2015



Reference Area Vegetation
40.199128°/-104.944080°

