

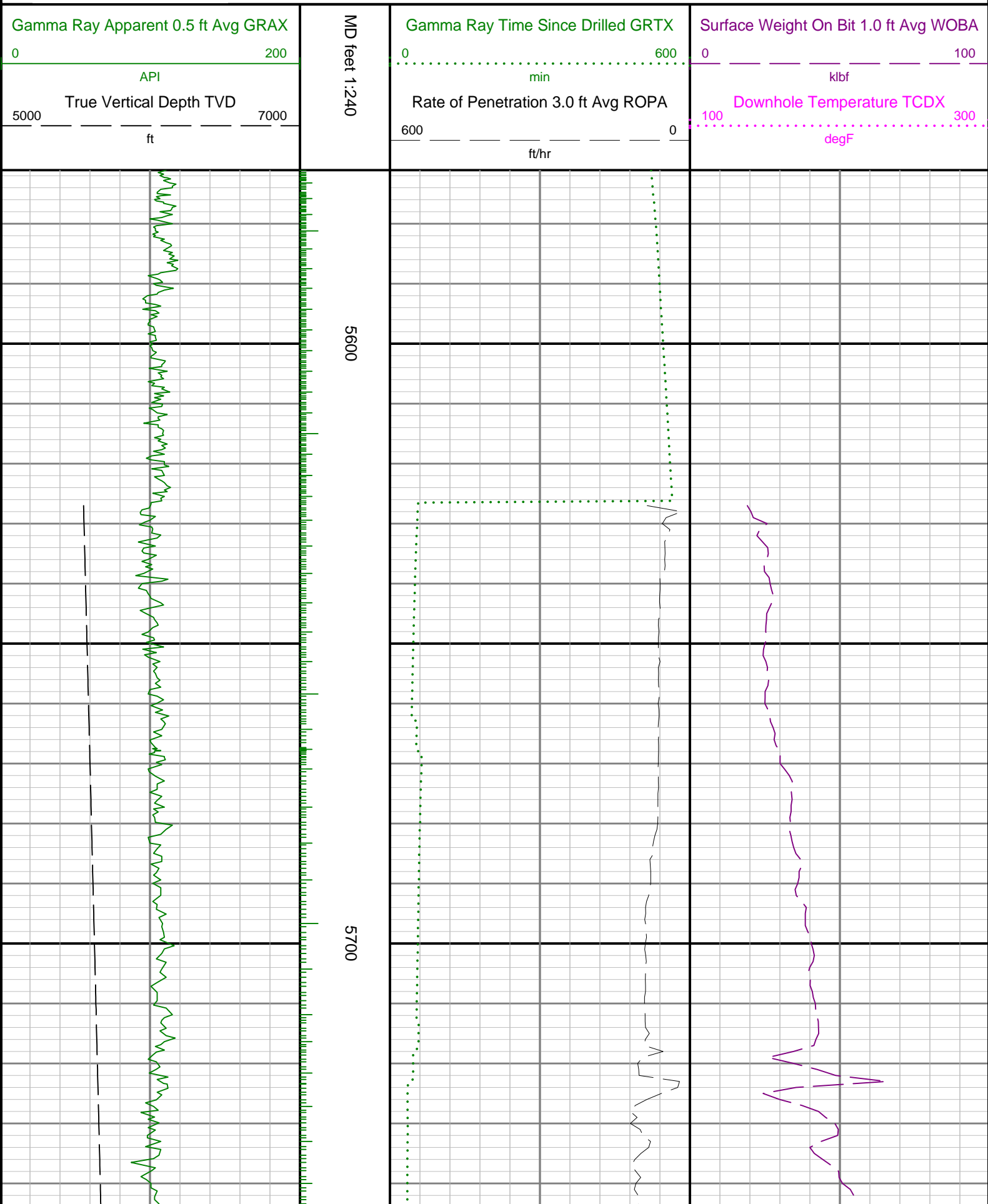


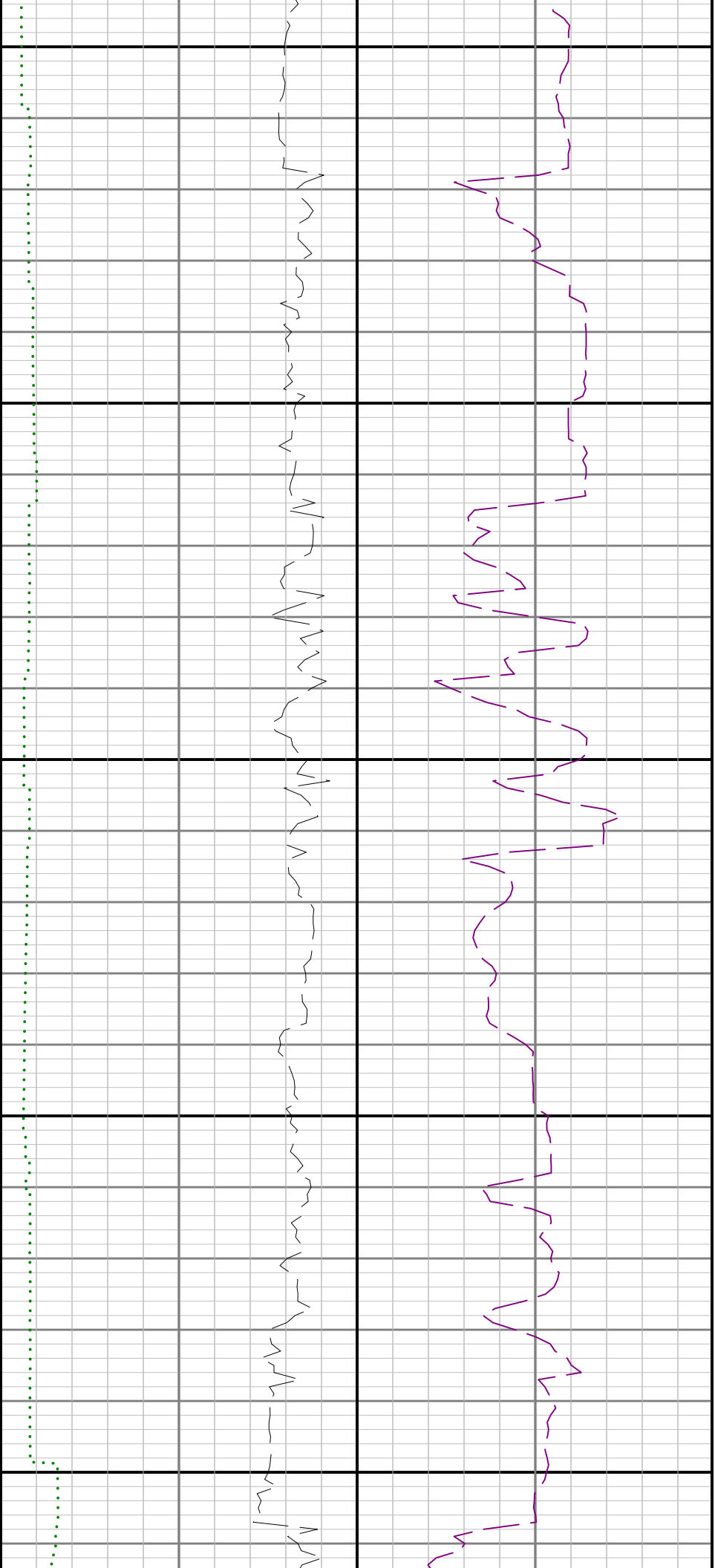
Company : Bonanza Creek

Well : Pronghorn 12-42-28HNB

Interval : 5571.08 - 10800.00 feet

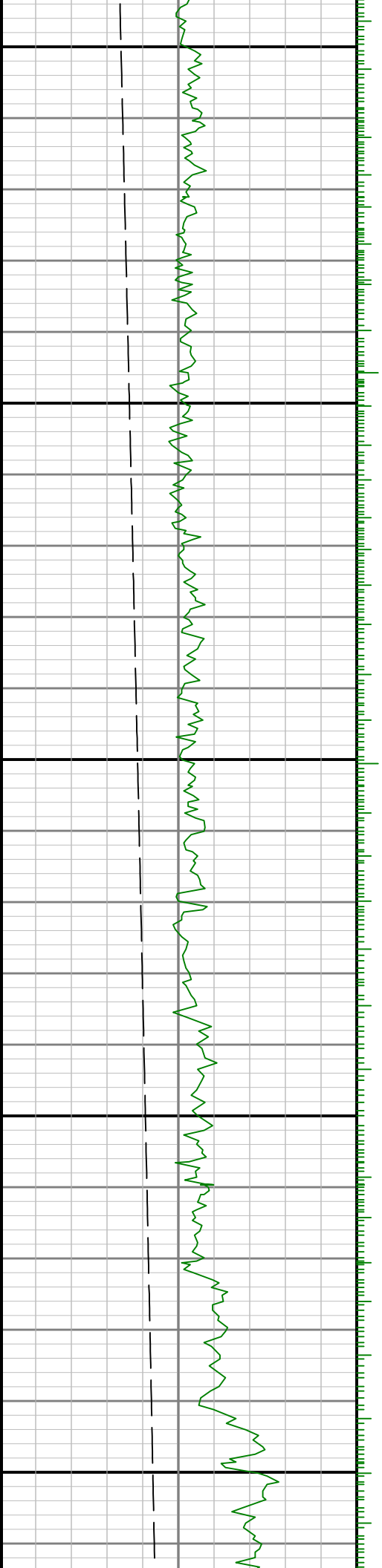
Created : 30/Jan/2014 12:17:23 AM

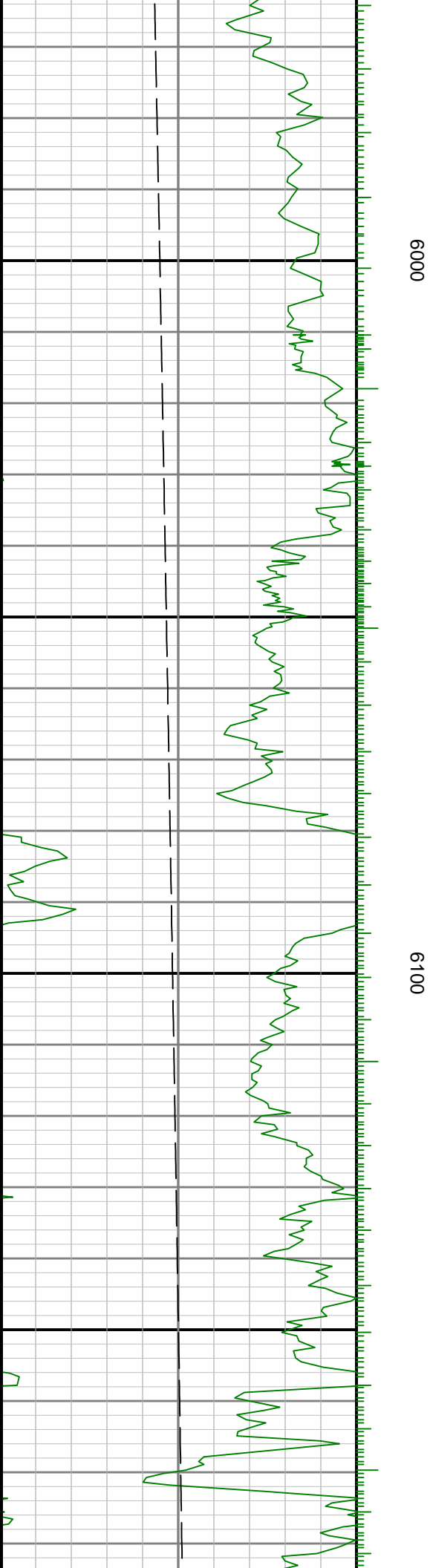
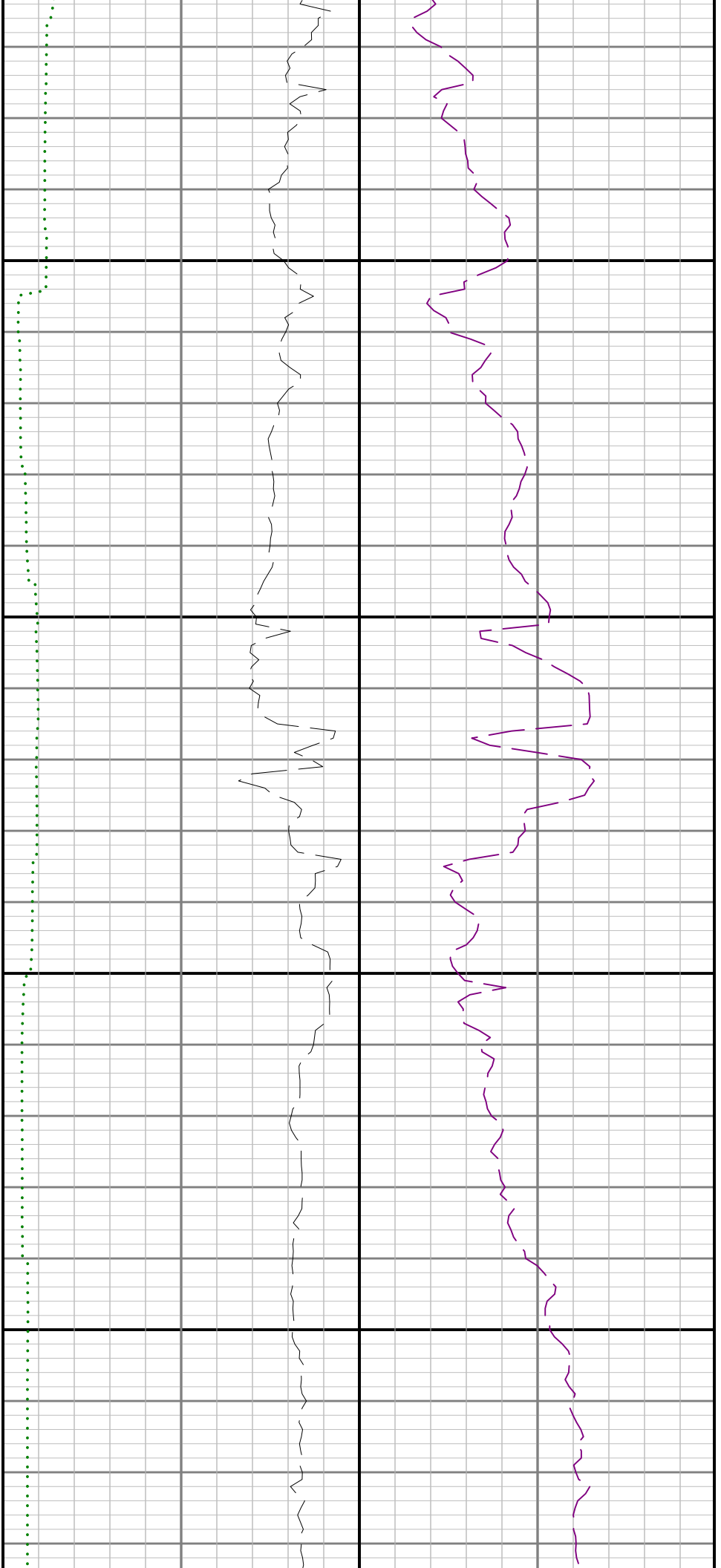


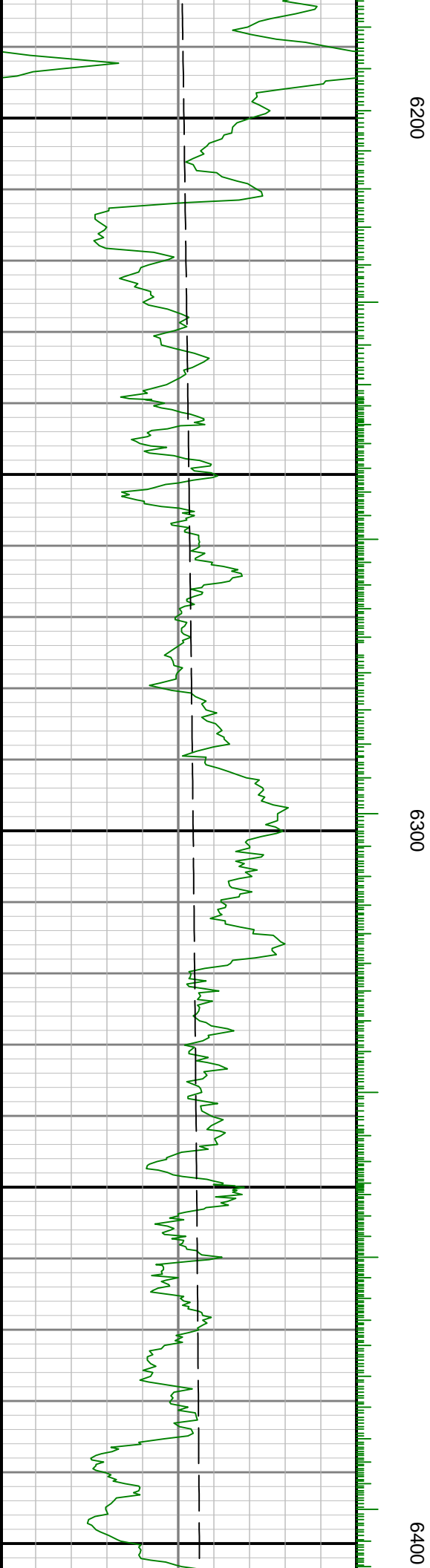
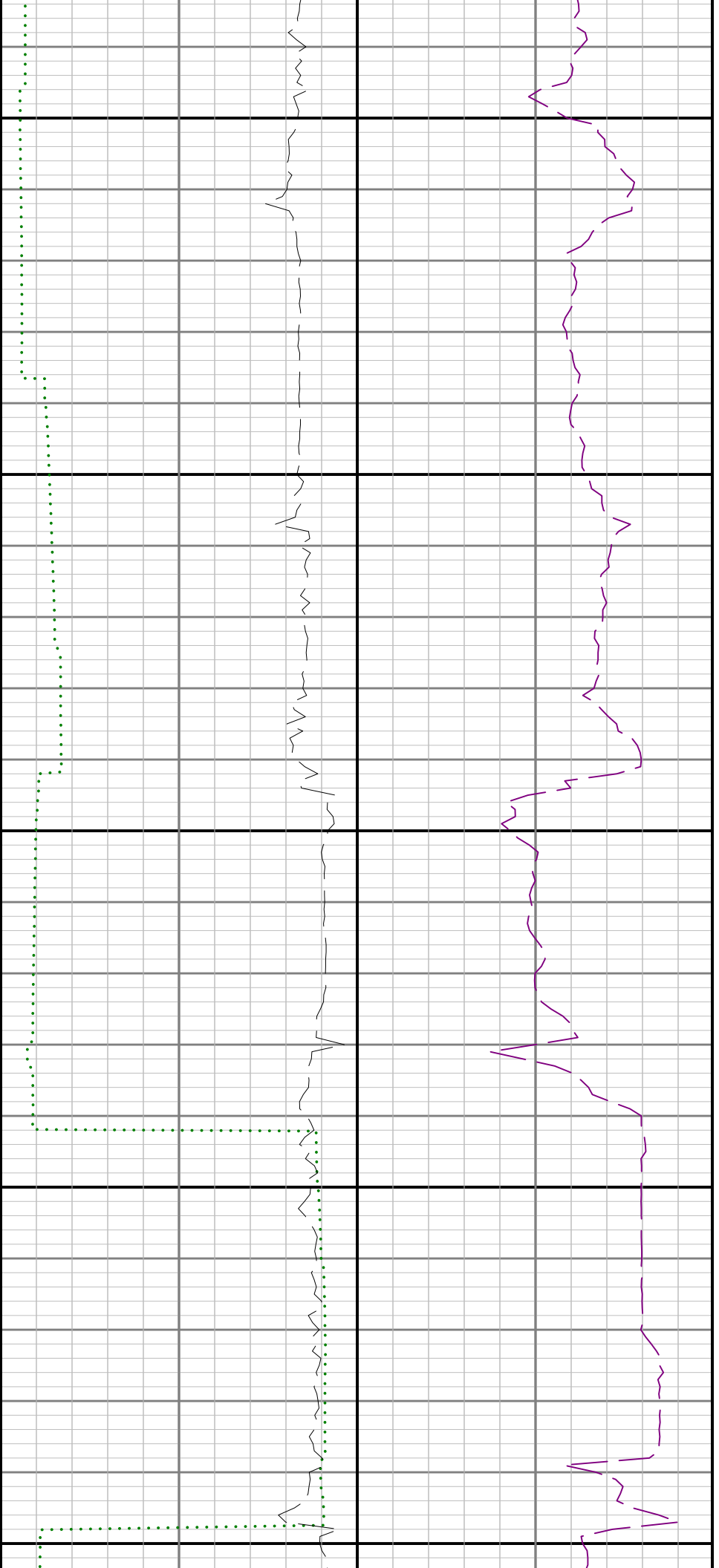


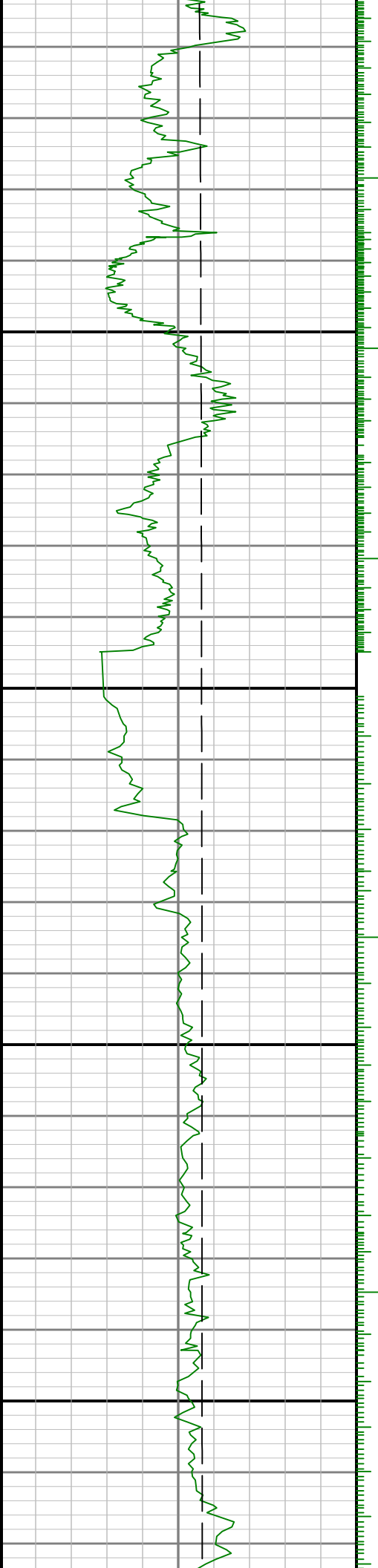
5800

5900



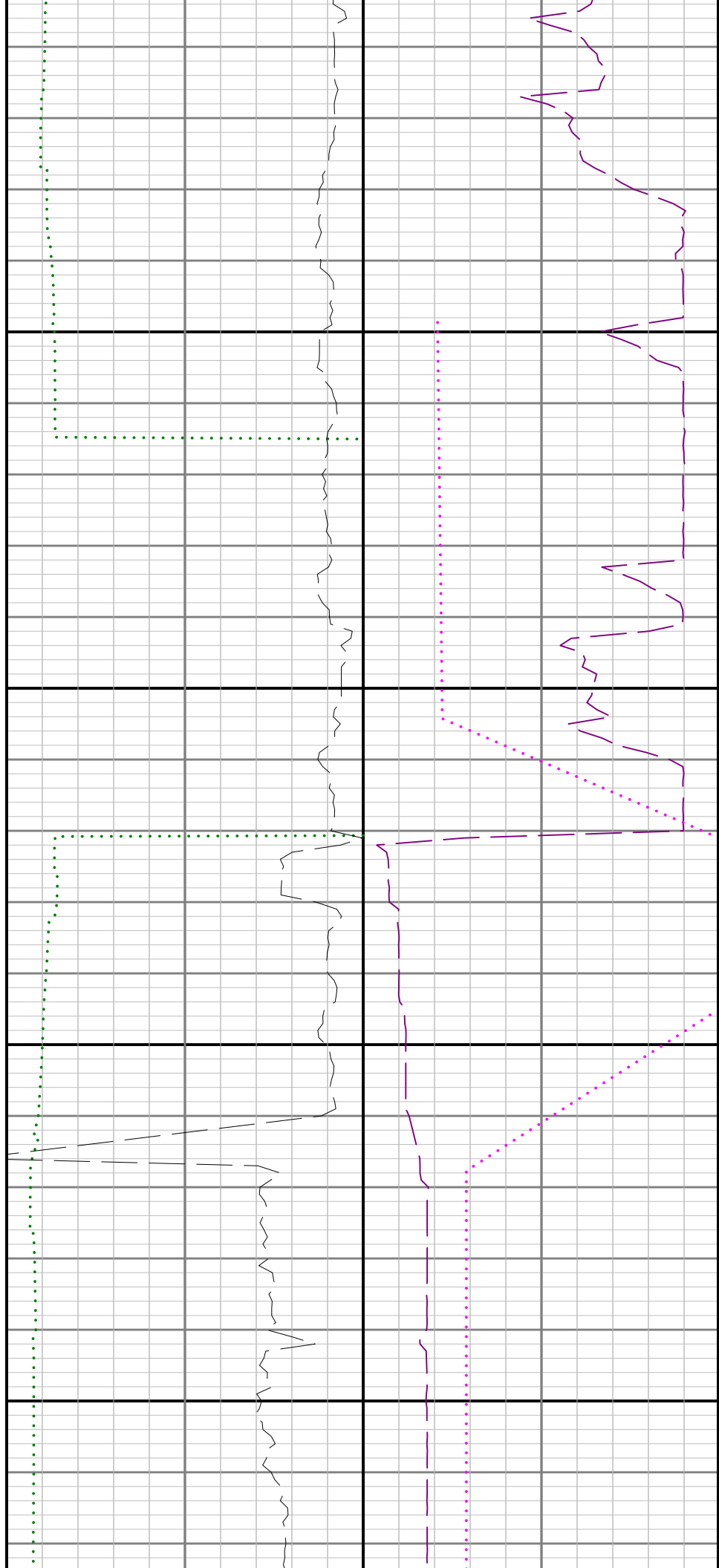






6500

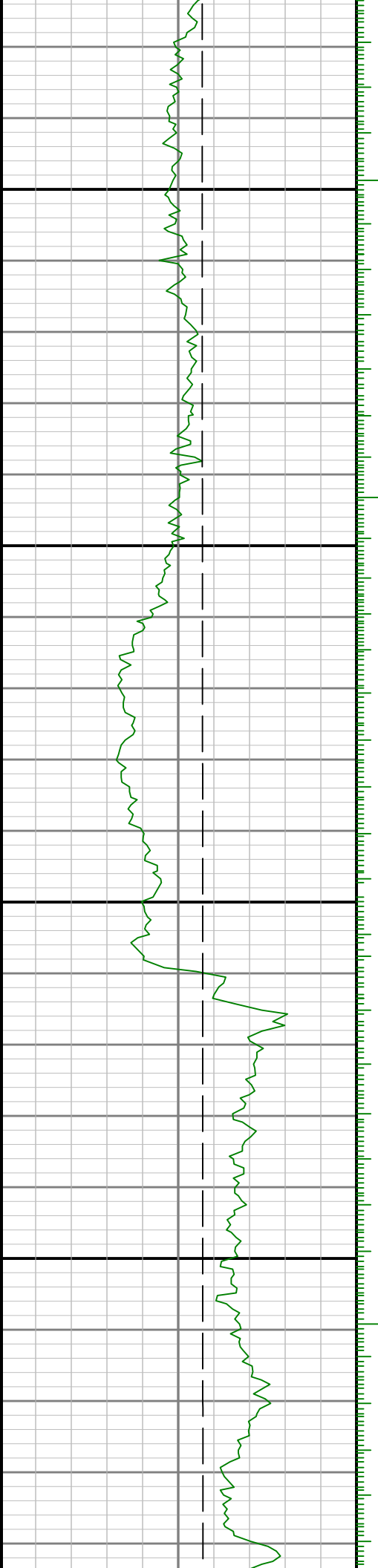
6600

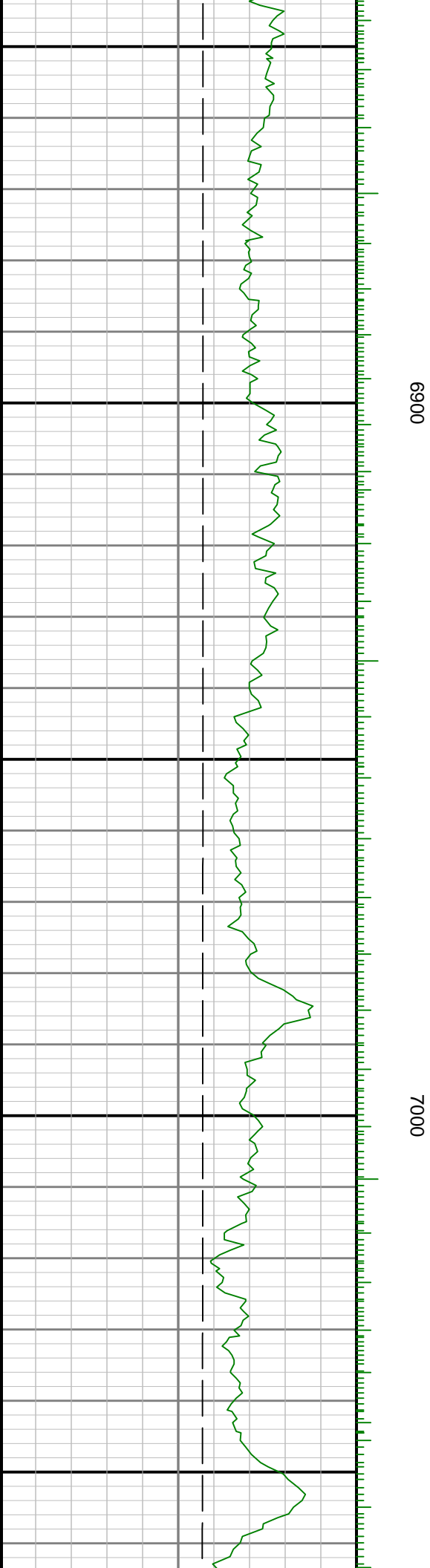
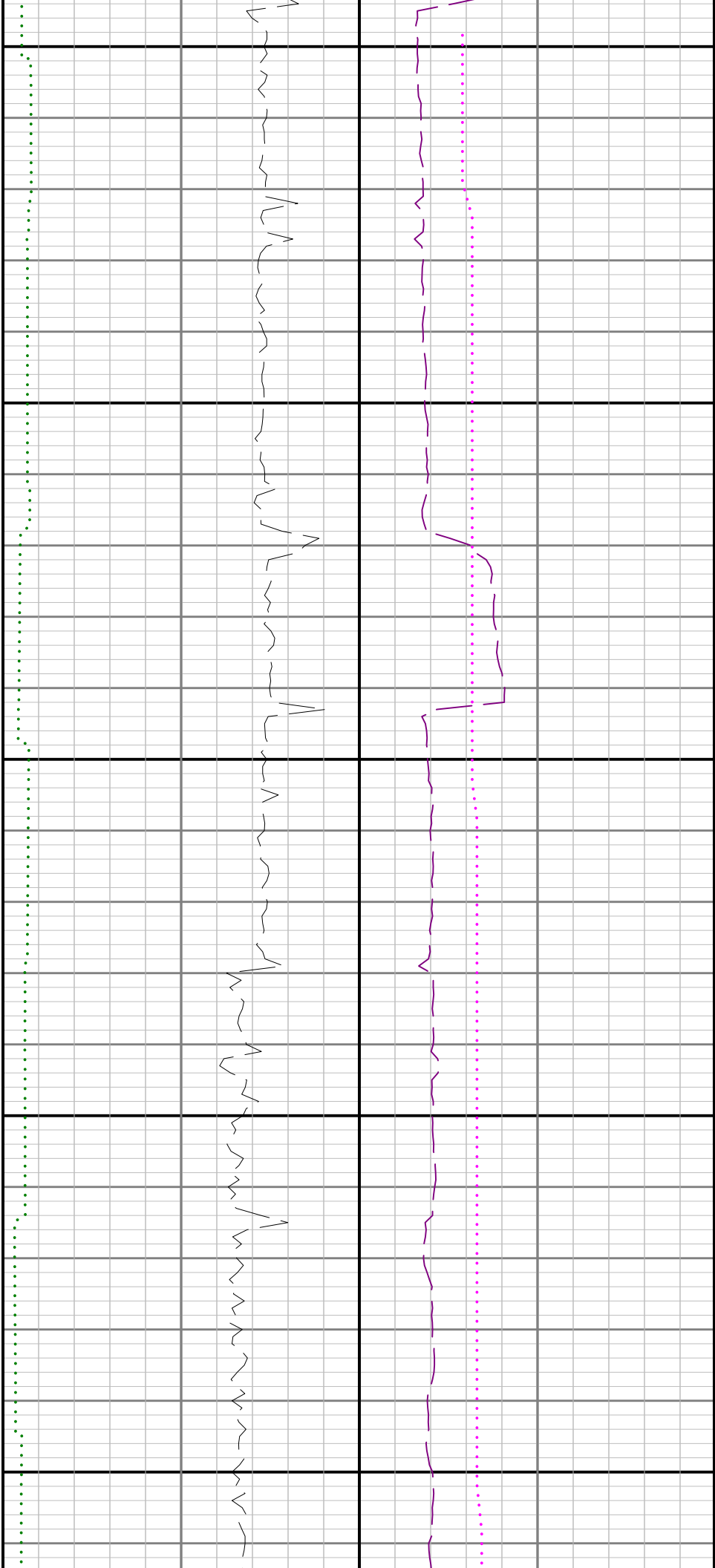


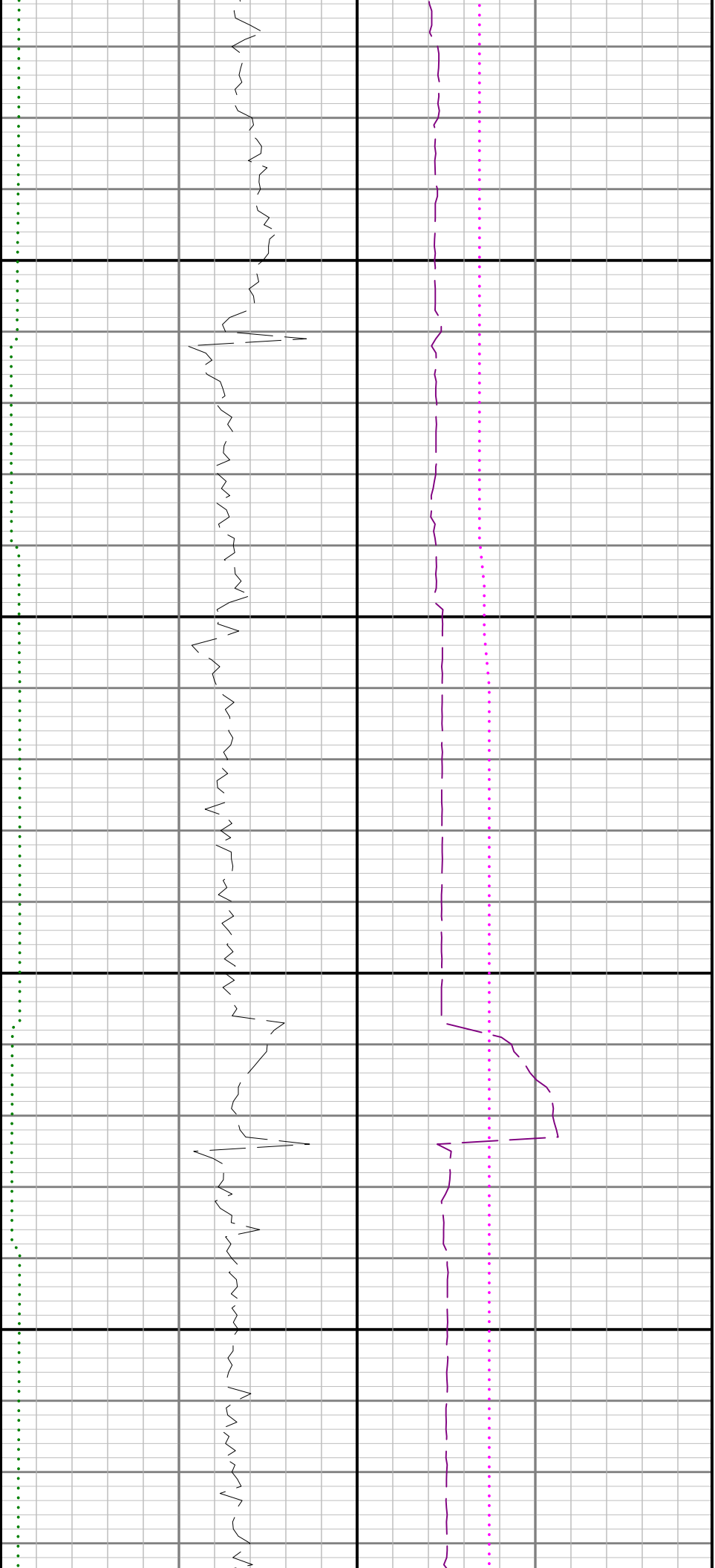


6700

6800

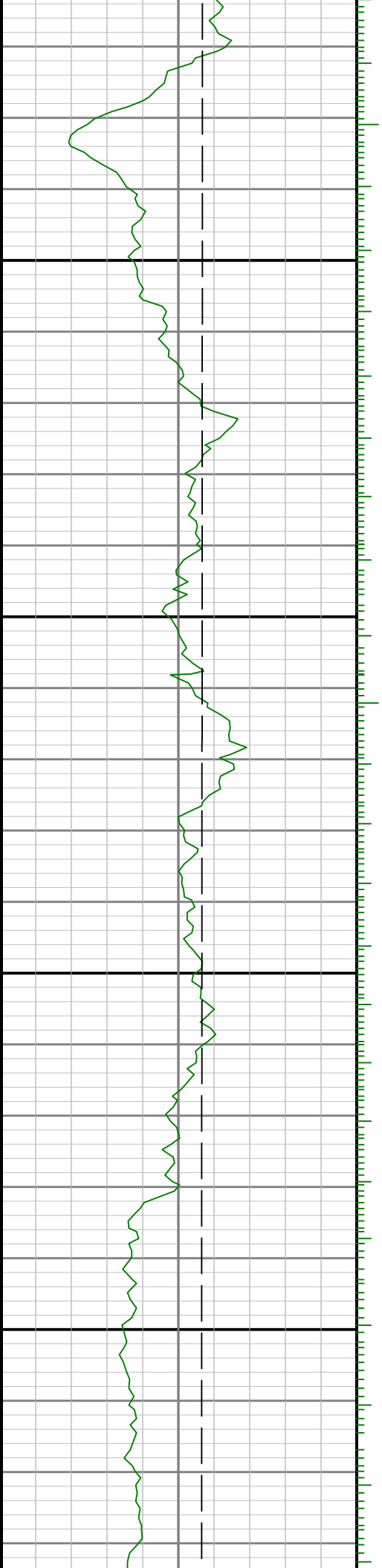


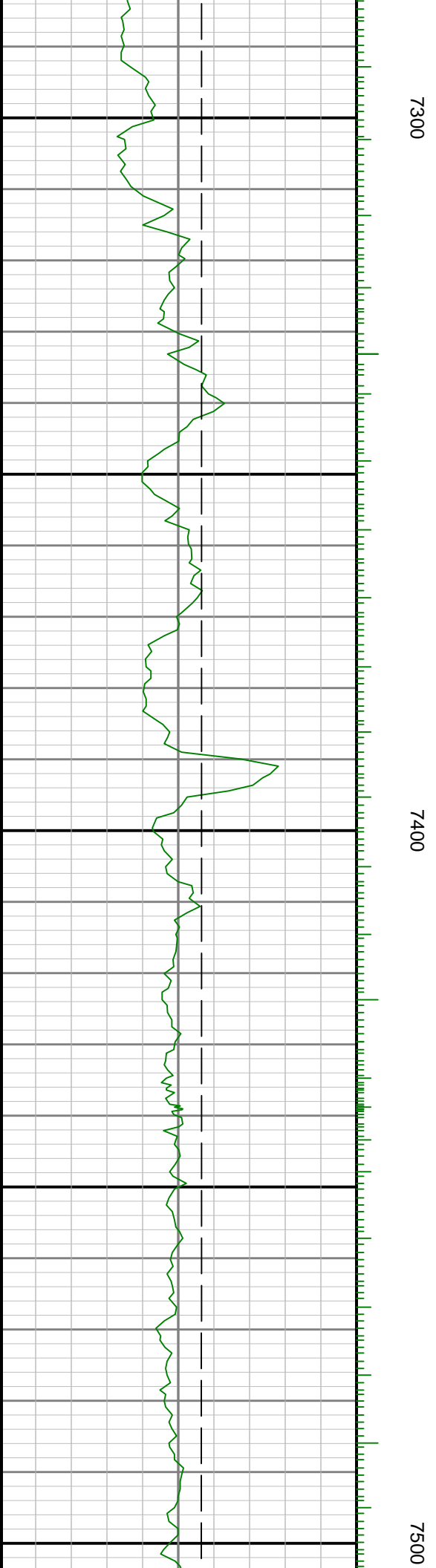


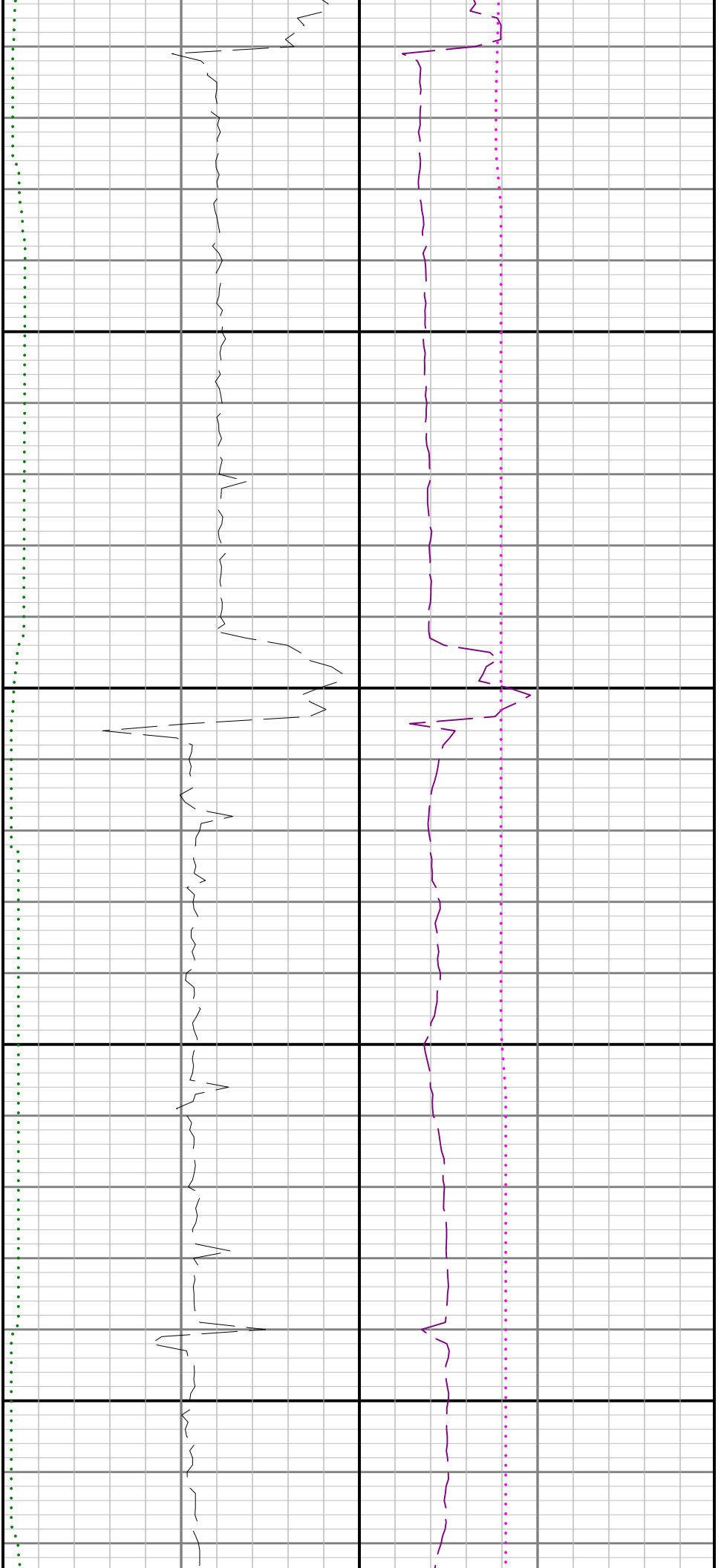


7100

7200

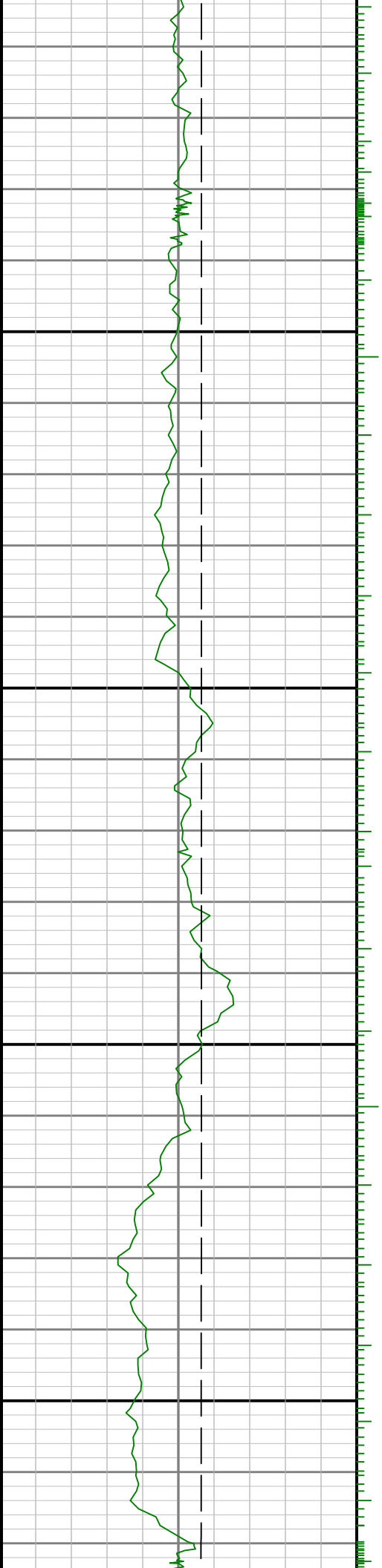


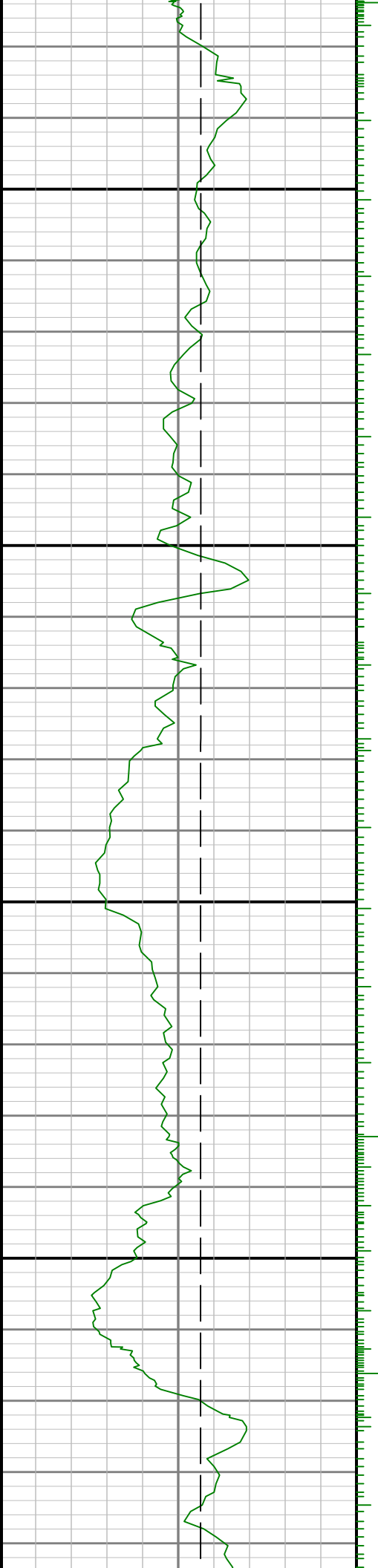




7600

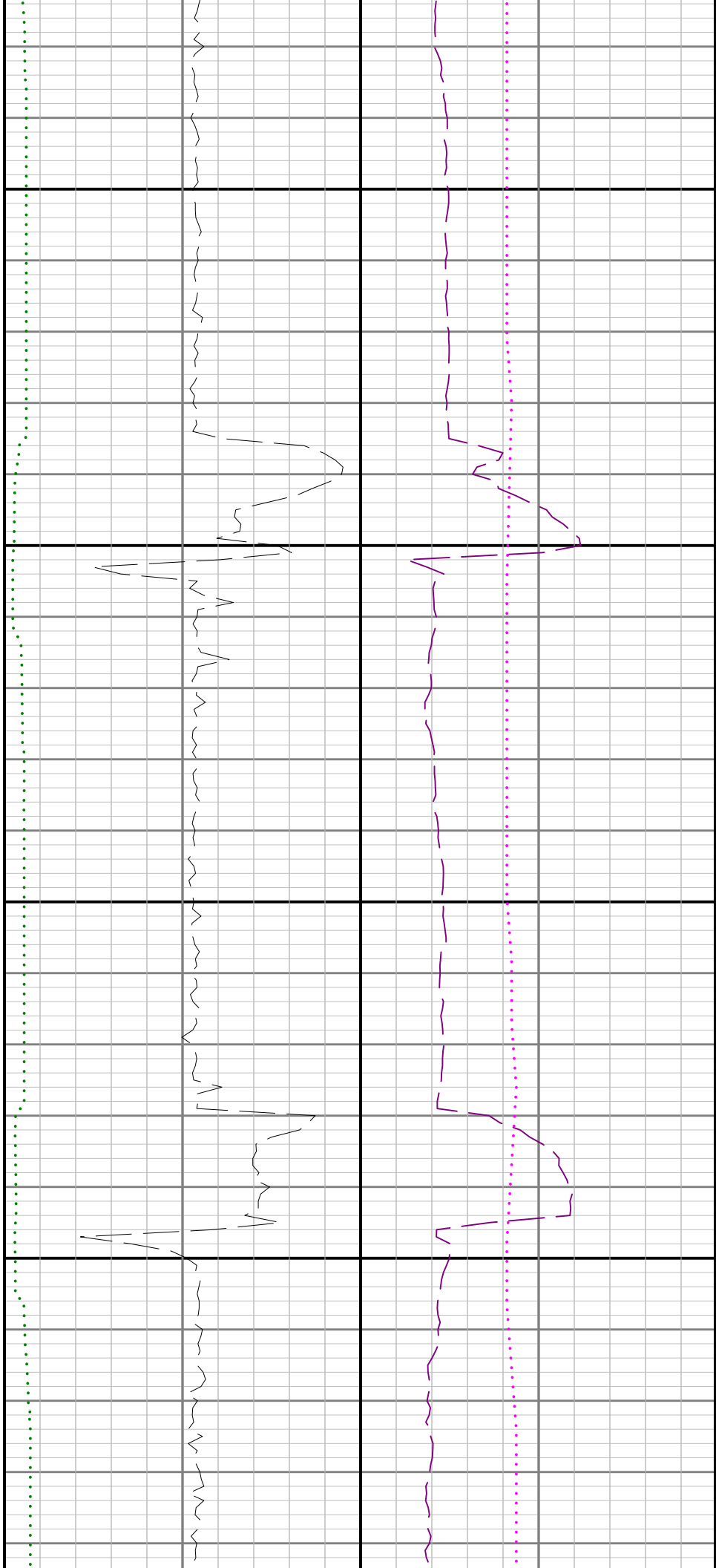
7700

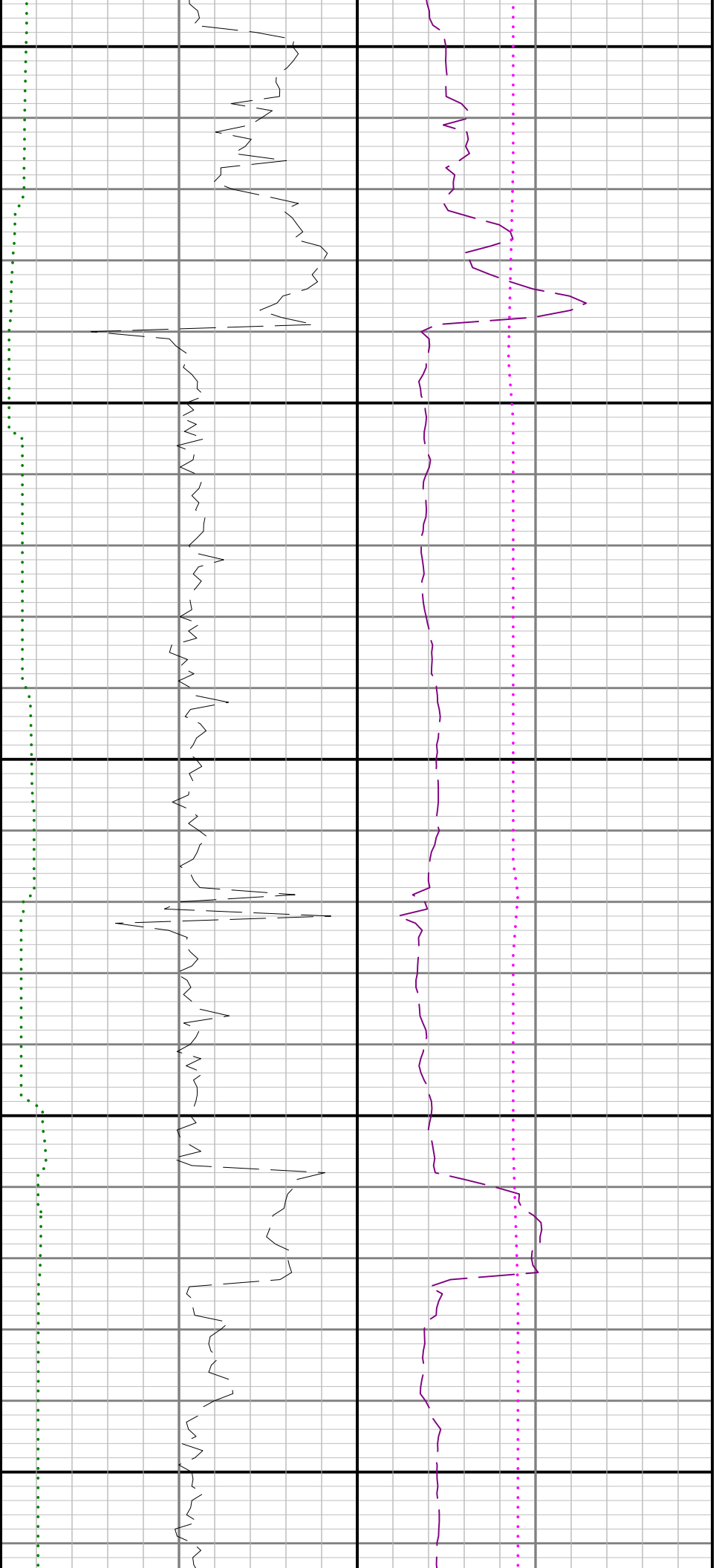




7800

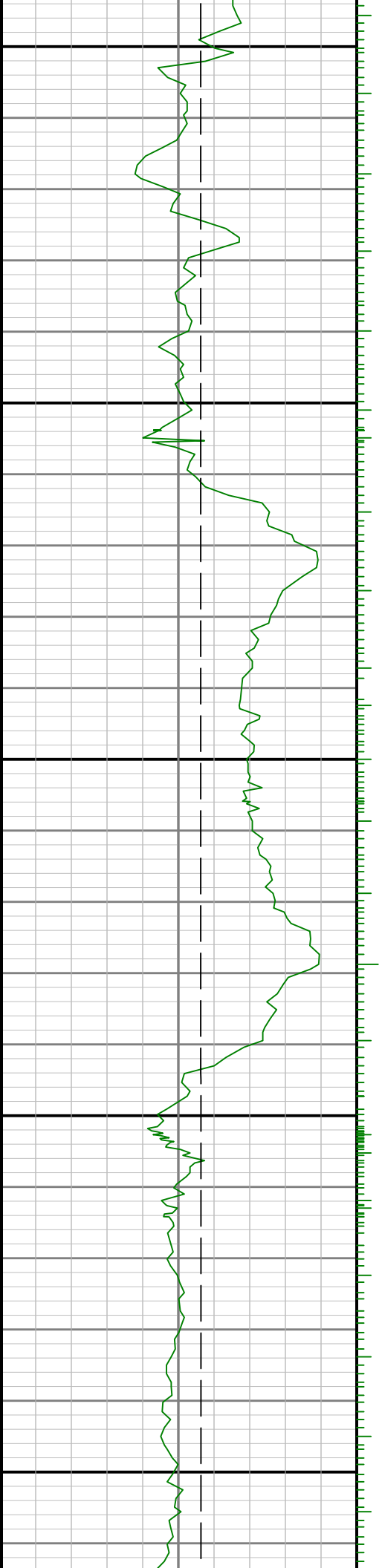
7900

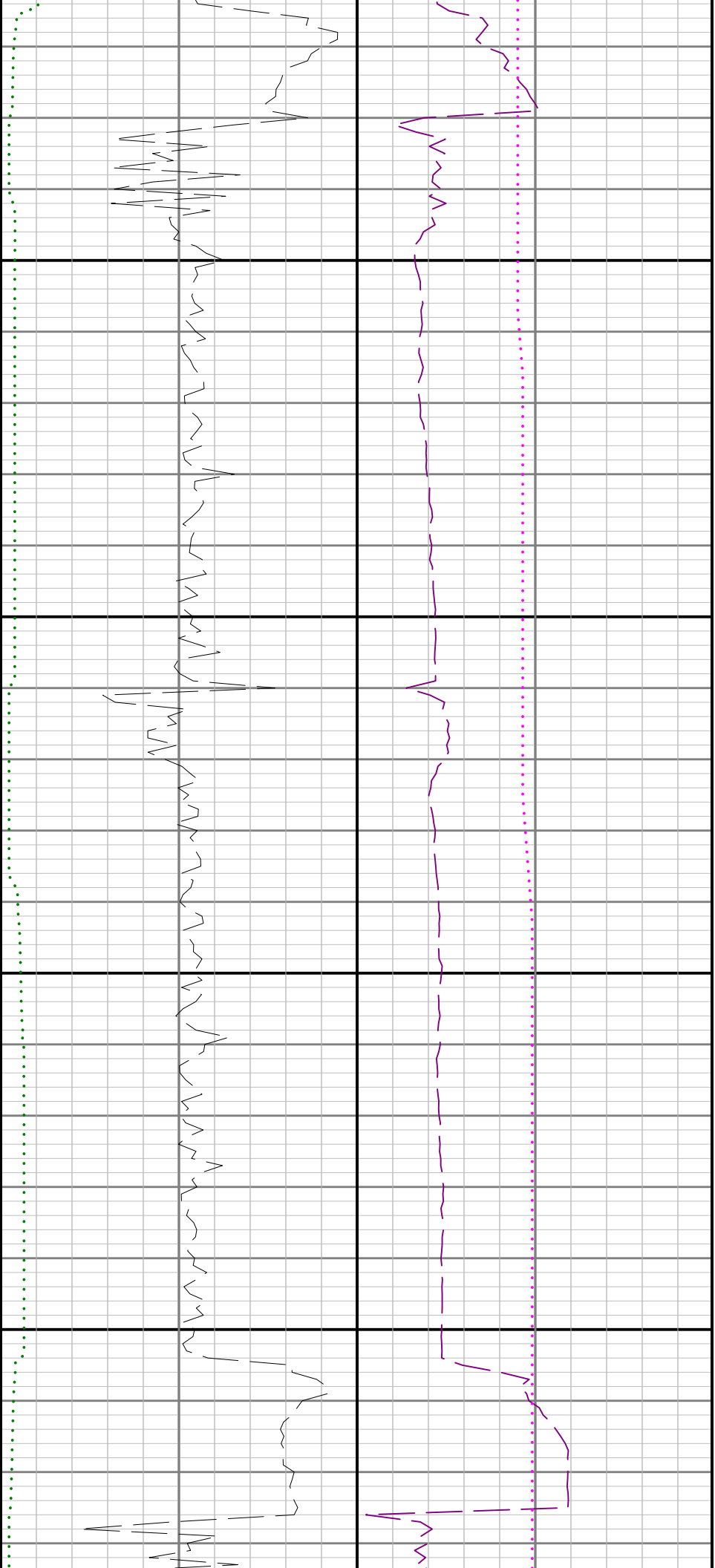




8000

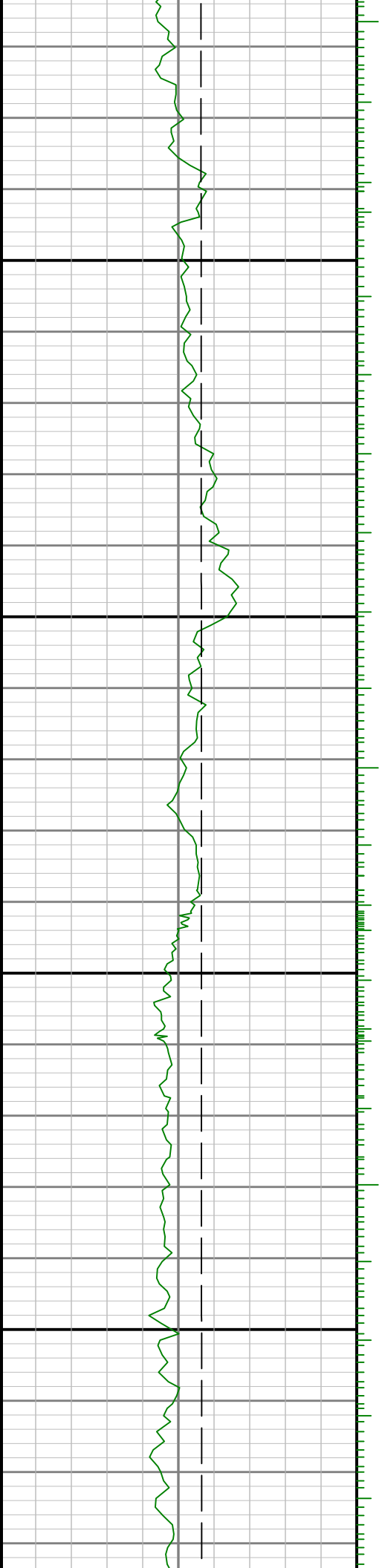
8100

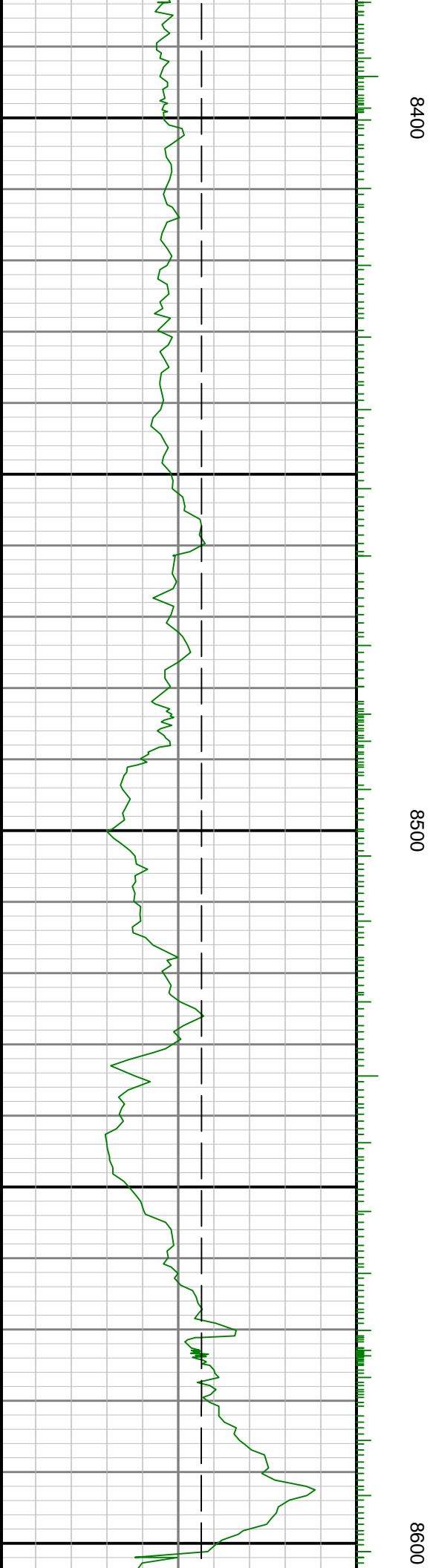




8200

8300

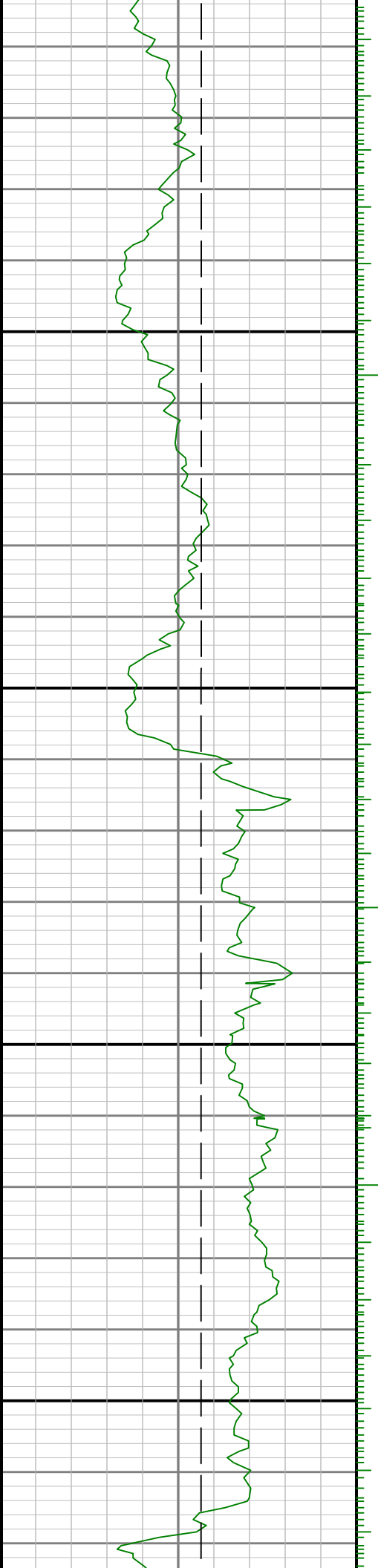


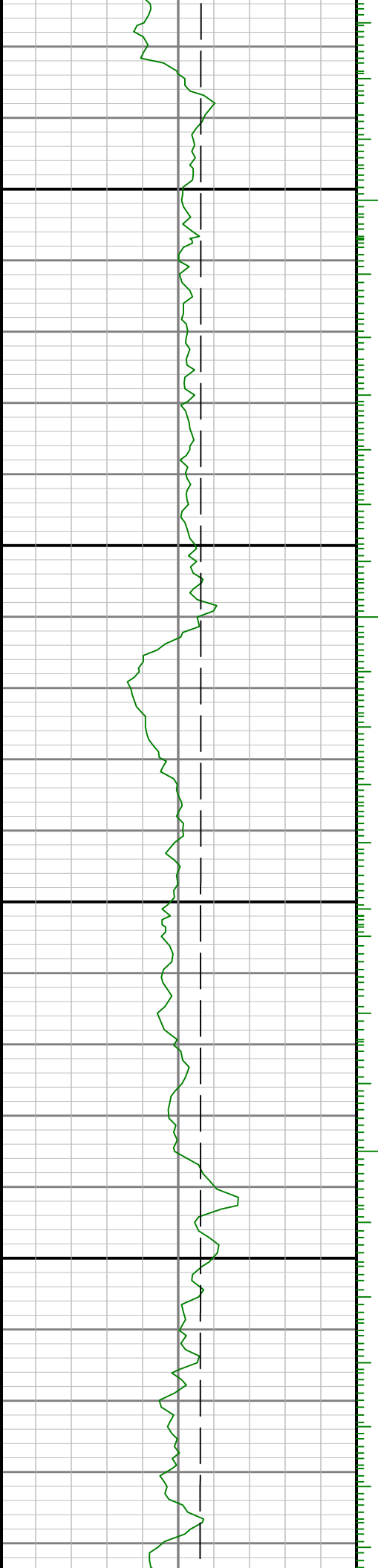




8700

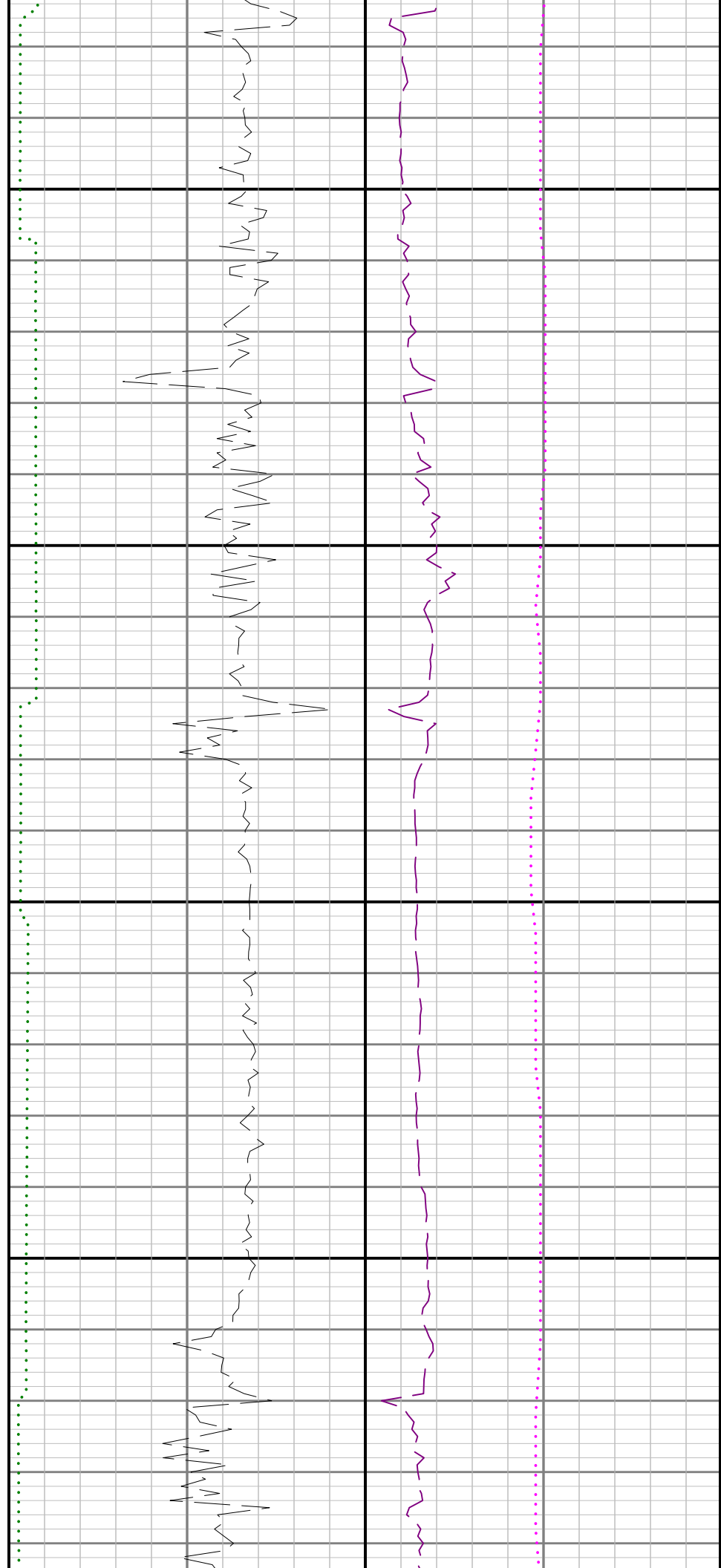
8800





9006

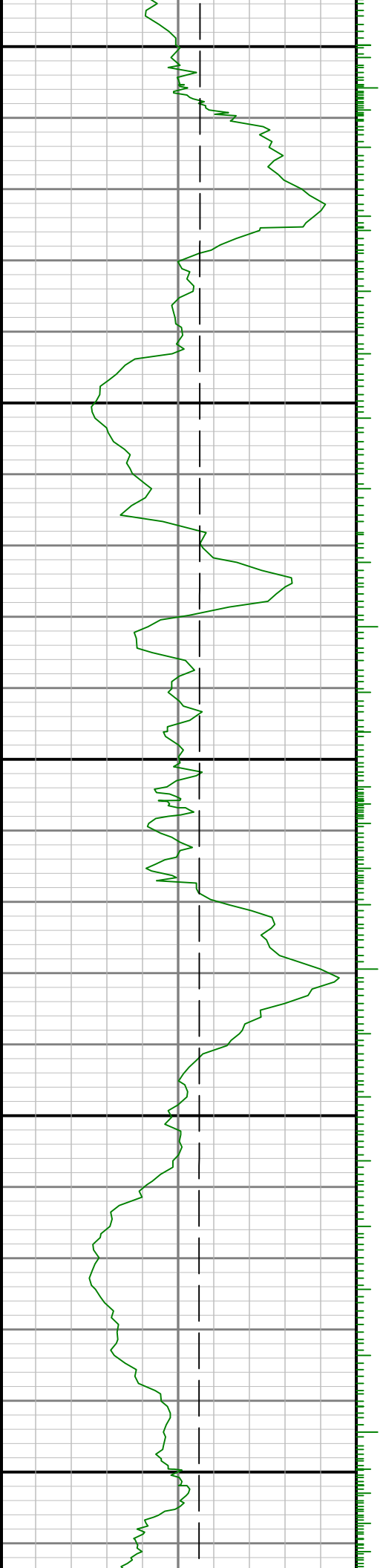
0068

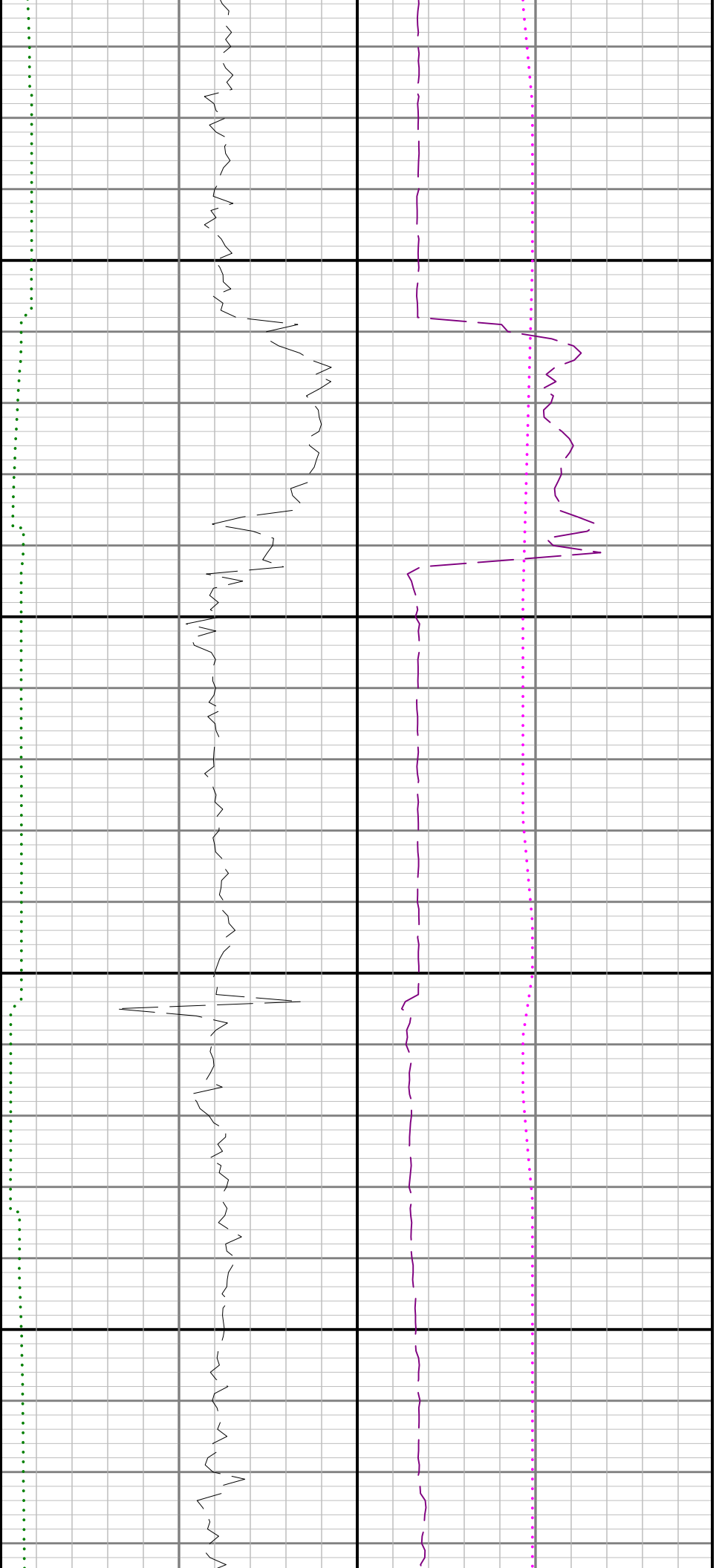




9100

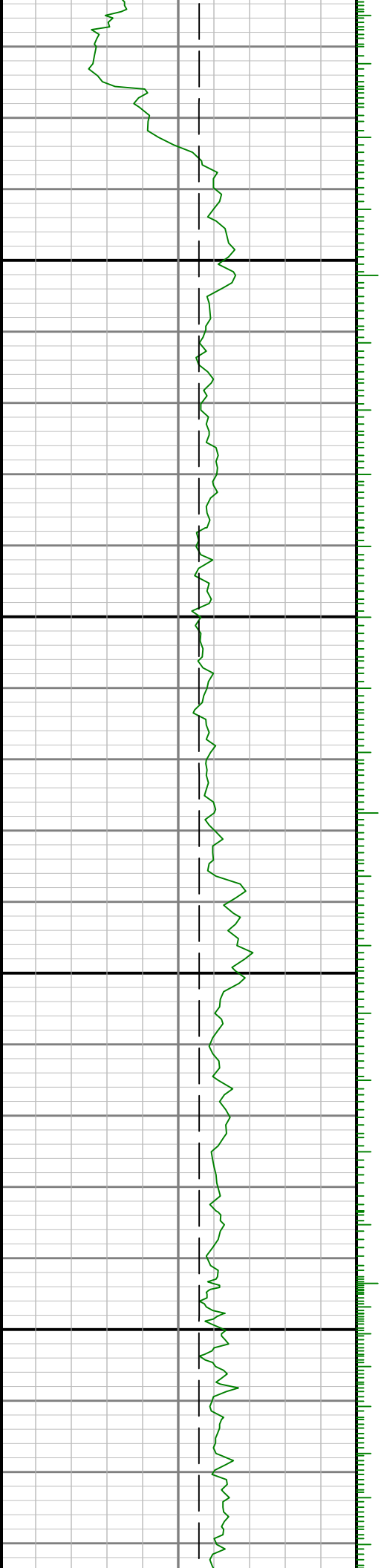
9200

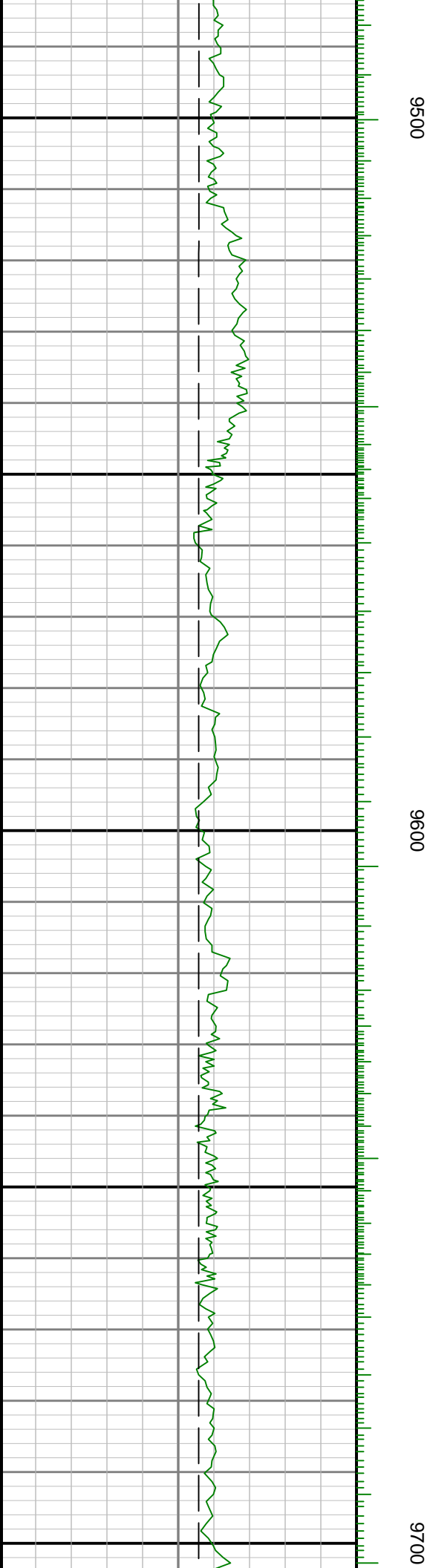


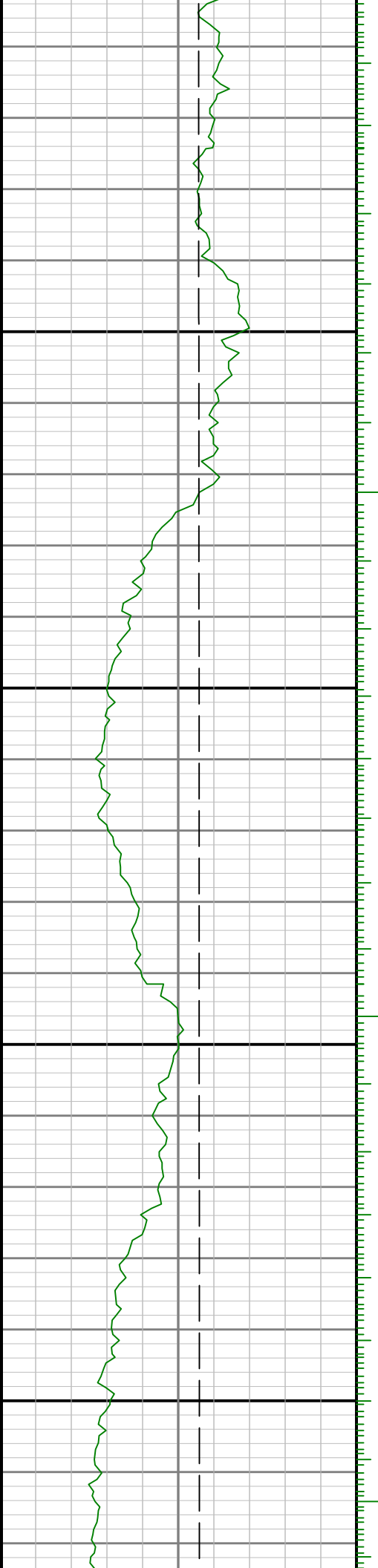


9300

9400

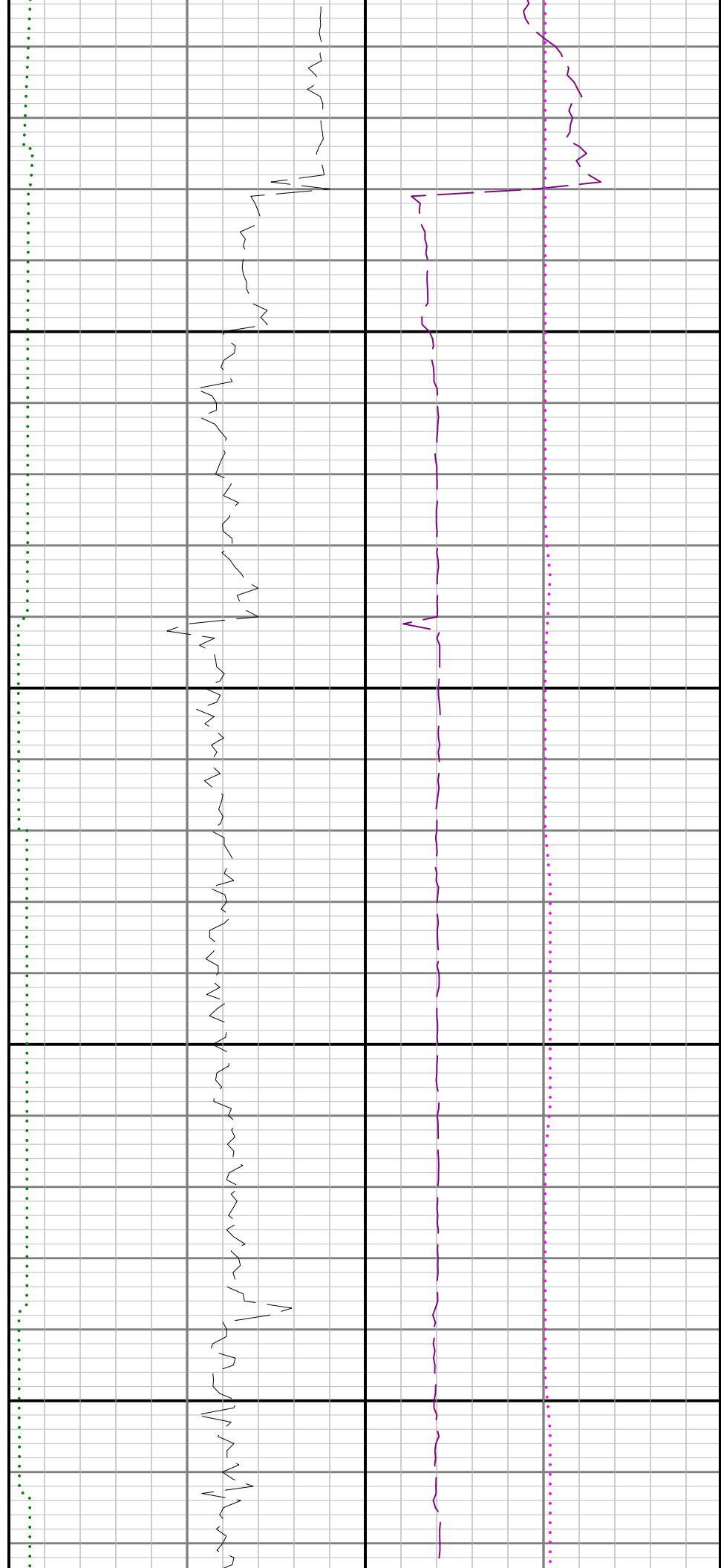


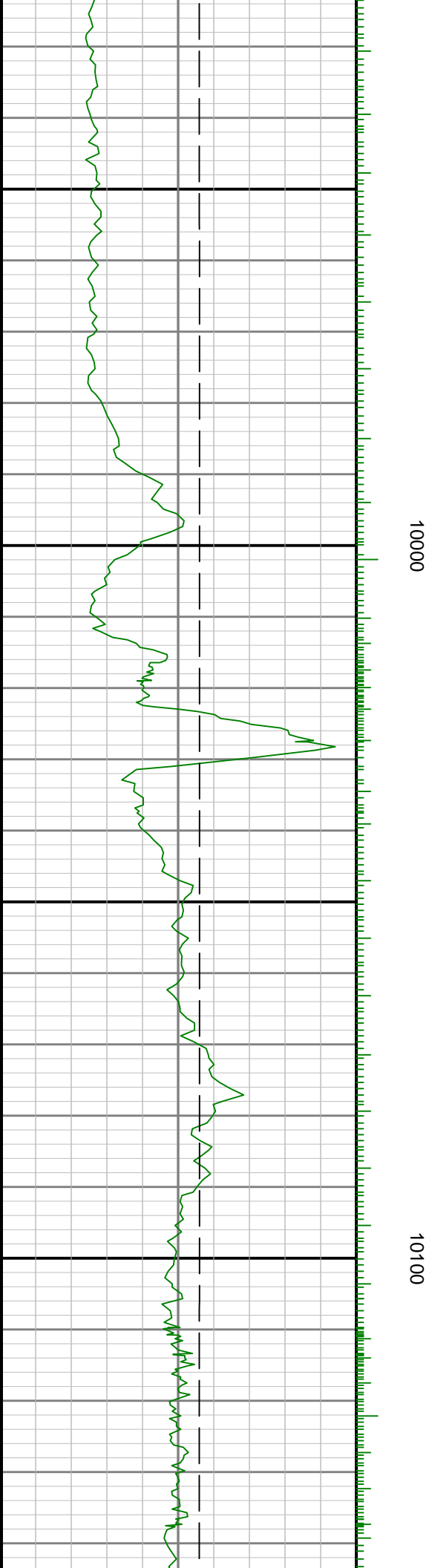
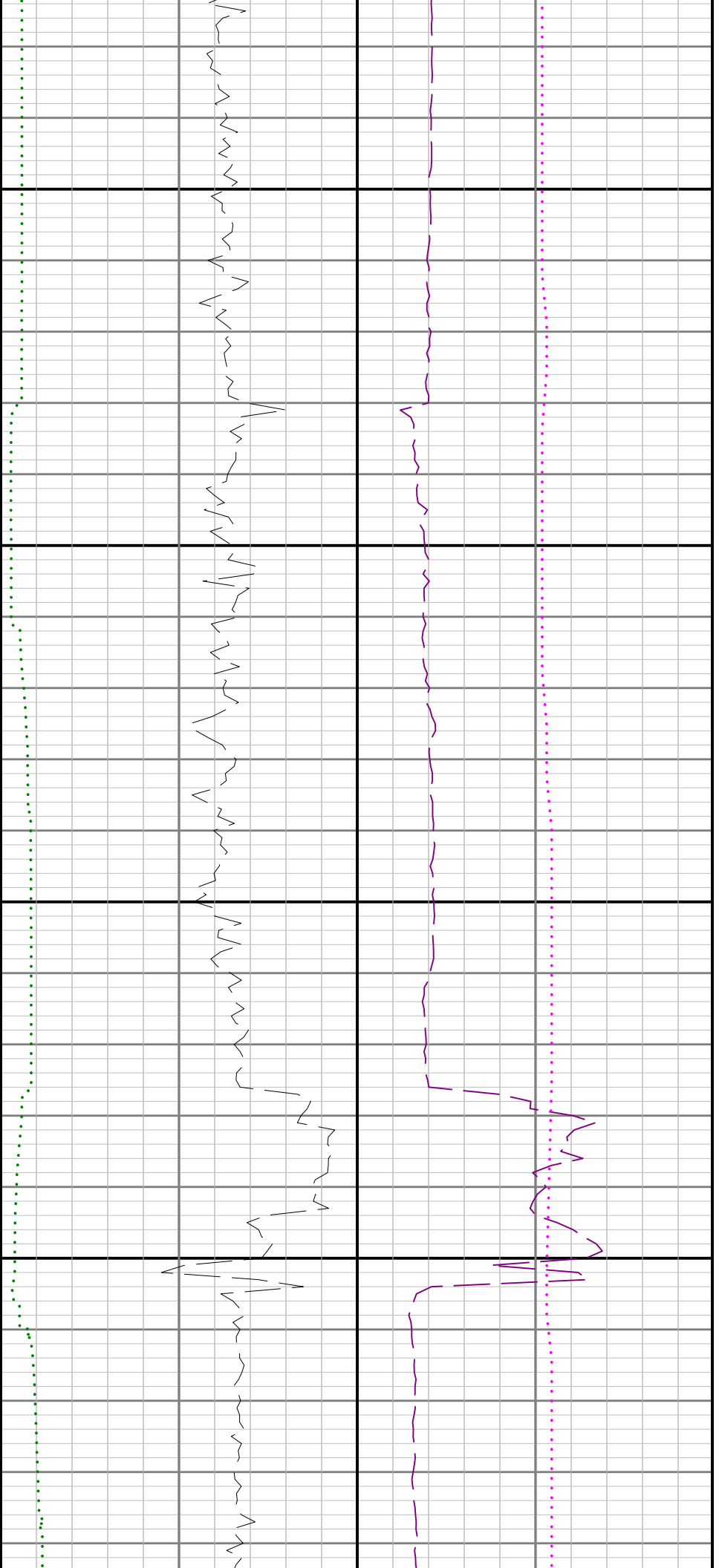




0066

0086

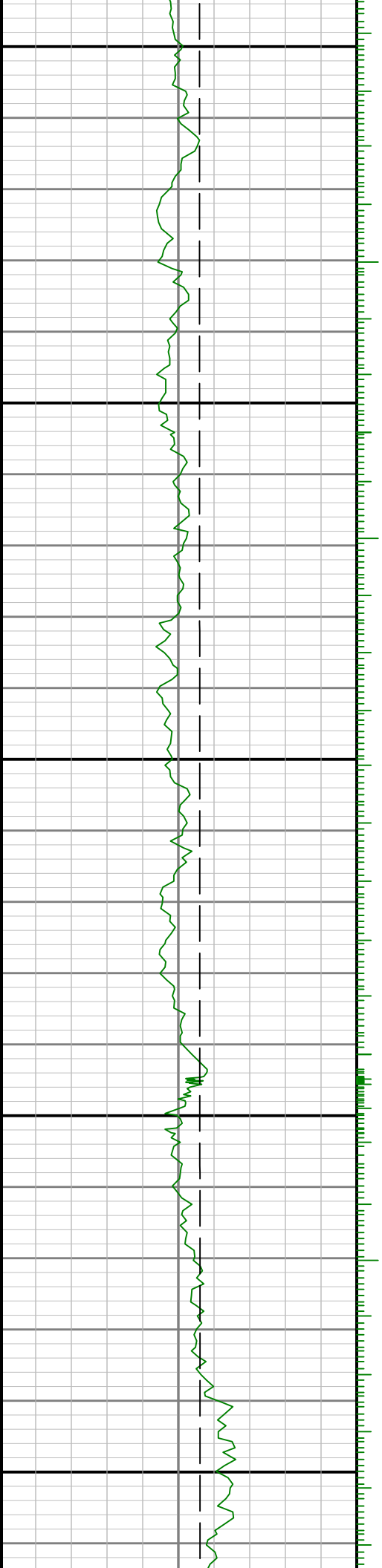


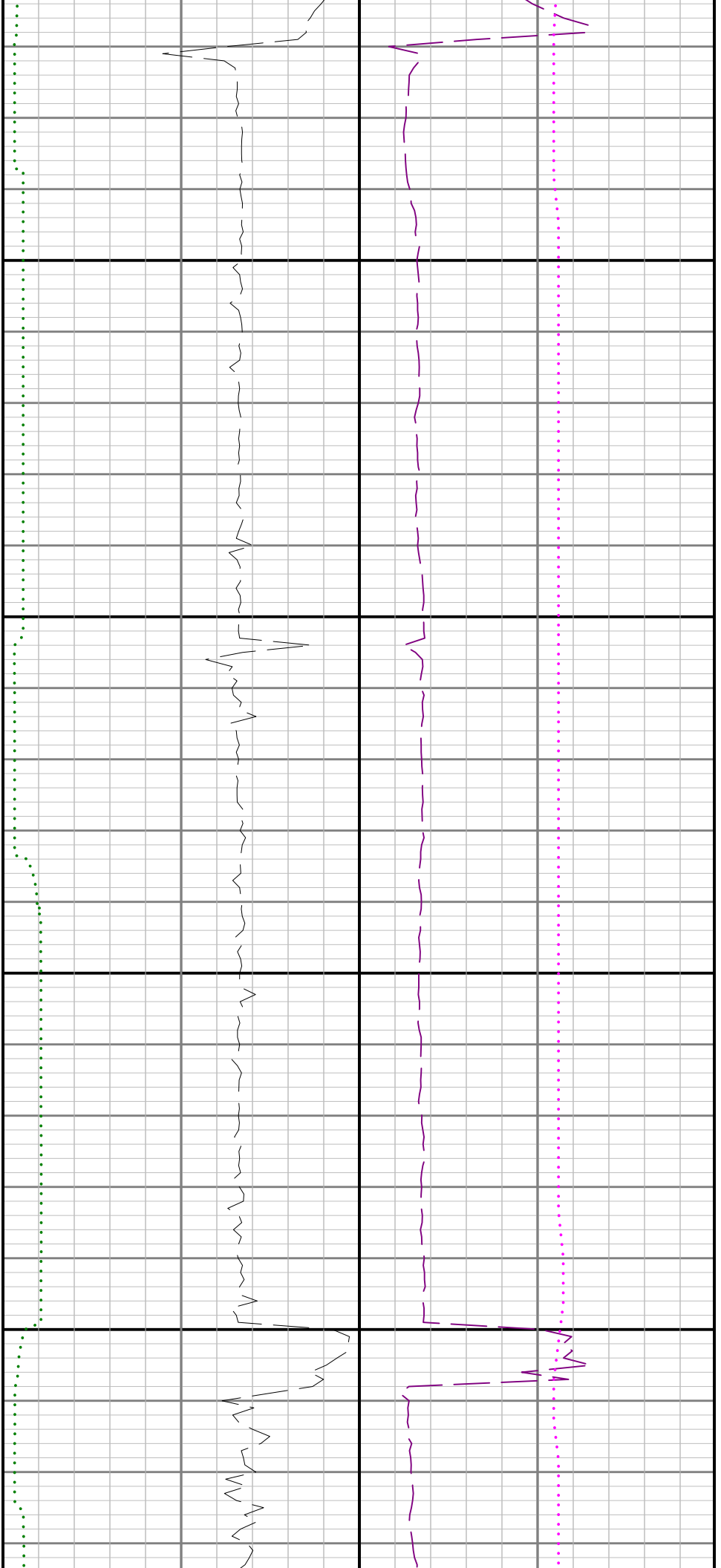




10200

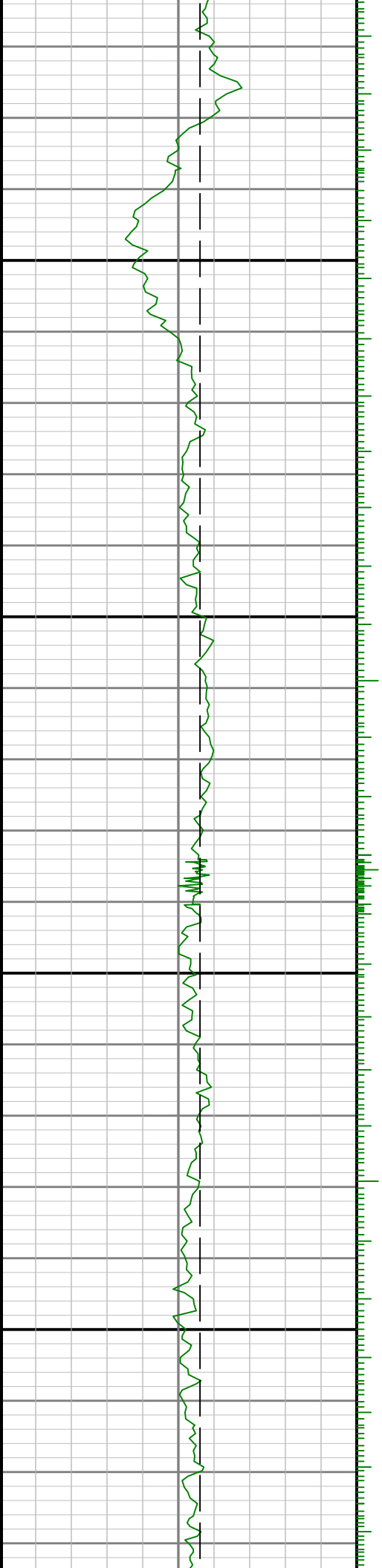
10300

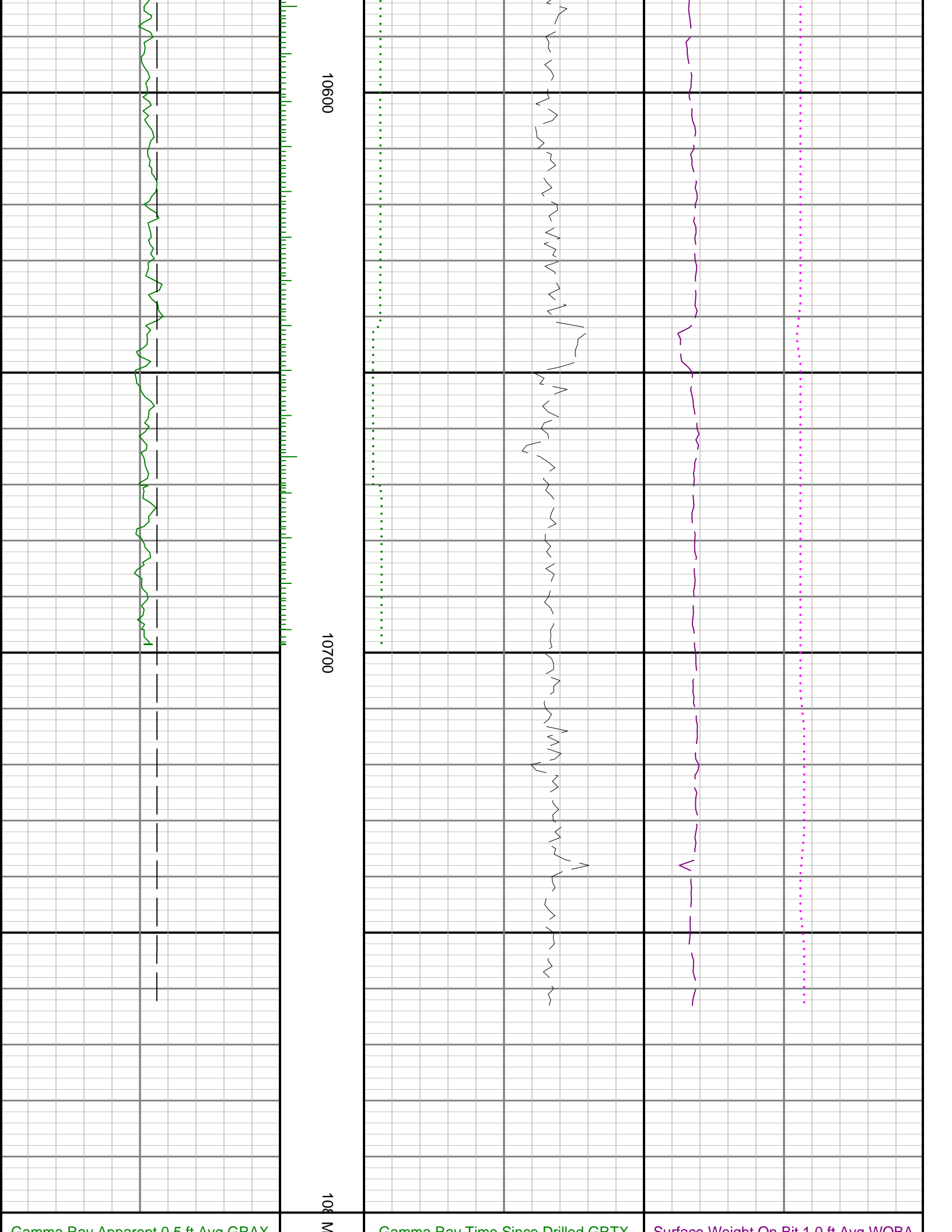




10400

10500





Gamma Ray Apparent 0.5 ft Avg GRAA	ID feet 1:240	Gamma Ray Time Since Drilled GR TX	Surface Weight On Bit 1.0 ft Avg WOBA
0200		0600	0100
API		min	klbf
True Vertical Depth TVD		Rate of Penetration 3.0 ft Avg ROPA	Downhole Temperature TCDX
50007000		6000	100300
ft		ft/hr	degF