

WPX Energy Rocky Mountain LLC - EBUS

RGU 443-26-198

H&P 318

Post Job Summary

Cement Surface Casing

Date Prepared: 3/31/2015

Job Date: 3/18/2015

Submitted by: Patrick Ealey – Grand Junction Cement Engineer

The Road to Excellence Starts with Safety

Sold To #: 300721	Ship To #: 3124457	Quote #:	Sales Order #: 0902195153
Customer: WPX ENERGY ROCKY MOUNTAIN LLC-EBUS	Customer Rep: W.C. WILSON		
Well Name: FEDERAL	Well #: RGU 443-26-198	API/UWI #: 05-103-11984-00	
Field: SULPHUR CREEK	City (SAP): MEEKER	County/Parish: RIO BLANCO	State: COLORADO
Legal Description: 26-1S-98W-2466FNL-910FEL			
Contractor: H & P DRLG	Rig/Platform Name/Num: H & P 318		
Job BOM: 392189			
Well Type: DIRECTIONAL GAS			
Sales Person: HALAMERICA\HB50180	Srvs Supervisor: Christopher Kukus		
Job			

Formation Name	
Formation Depth (MD)	Top Bottom
Form Type	BHST
Job depth MD	3949ft Job Depth TVD
Water Depth	Wk Ht Above Floor 5FT
Perforation Depth (MD)	From To

Well Data										
Description	New / Used	Size in	ID in	Weight lbm/ft	Thread	Grade	Top MD ft	Bottom MD ft	Top TVD ft	Bottom TVD ft
Open Hole Section			14.75				0	1800		
Casing	0	9.625	8.921	36	8 RD (LT&C)	J-55	0	3949		0
Open Hole Section			13.5				1800	3955	0	0

Tools and Accessories									
Type	Size in	Qty	Make	Depth ft		Type	Size in	Qty	Make
Guide Shoe	9.625	1		3949		Top Plug	9.625		HES
Float Shoe	9.625					Bottom Plug	9.625		HES
Float Collar	9.625	1		3919		SSR plug set	9.625		HES
Insert Float	9.625					Plug Container	9.625	1	HES
Stage Tool	9.625			1820		Centralizers	9.625		HES

Miscellaneous Materials											
Gelling Agt		Conc		Surfactant		Conc		Acid Type		Qty	Conc
Treatment Fld		Conc		Inhibitor		Conc		Sand Type		Size	Qty

Fluid Data										
Stage/Plug #: 1										
Fluid #	Stage Type	Fluid Name	Qty	Qty UoM	Mixing Density lbm/gal	Yield ft3/sack	Mix Fluid Gal	Rate bbl/min	Total Mix Fluid Gal	
1	Fresh Water	Fresh Water	40	bbl	8.33			4		
Fluid #	Stage Type	Fluid Name	Qty	Qty UoM	Mixing Density lbm/gal	Yield ft3/sack	Mix Fluid Gal	Rate bbl/min	Total Mix Fluid Gal	
2	VersaCem GJ1	VERSACEM (TM) SYSTEM	570	sack	12.8	1.77		8	9.31	

9.33 Gal			FRESH WATER							
Fluid #	Stage Type	Fluid Name		Qty	Qty UoM	Mixing Density lbm/gal	Yield ft3/sack	Mix Fluid Gal	Rate bbl/min	Total Mix Fluid Gal
3	VariCem GJ1	VARICEM (TM) CEMENT		210	sack	12.8	2.11		6	11.77
11.71 Gal			FRESH WATER							
Fluid #	Stage Type	Fluid Name		Qty	Qty UoM	Mixing Density lbm/gal	Yield ft3/sack	Mix Fluid Gal	Rate bbl/min	Total Mix Fluid Gal
4	Fresh Water Displacement	Fresh Water Displacement		302.3	bbl	8.3			10	
Cement Left In Pipe		Amount	29 ft			Reason		Shoe Joint		
Fluid Data										
Stage/Plug #: 2										
Fluid #	Stage Type	Fluid Name		Qty	Qty UoM	Mixing Density lbm/gal	Yield ft3/sack	Mix Fluid Gal	Rate bbl/min	Total Mix Fluid Gal
1	Fresh Water	Fresh Water		20	bbl	8.3			2	
Fluid #	Stage Type	Fluid Name		Qty	Qty UoM	Mixing Density lbm/gal	Yield ft3/sack	Mix Fluid Gal	Rate bbl/min	Total Mix Fluid Gal
2	VariCem GJ5	VARICEM (TM) CEMENT		980	sack	12.8	2.18		8	12.11
12.05 Gal			FRESH WATER							
Fluid #	Stage Type	Fluid Name		Qty	Qty UoM	Mixing Density lbm/gal	Yield ft3/sack	Mix Fluid Gal	Rate bbl/min	Total Mix Fluid Gal
3	Fresh Water Displacement	Fresh Water Displacement		140.7	bbl	8.3			10	
Fluid #	Stage Type	Fluid Name		Qty	Qty UoM	Mixing Density lbm/gal	Yield ft3/sack	Mix Fluid Gal	Rate bbl/min	Total Mix Fluid Gal
4	Top Out	HALCEM (TM) SYSTEM		585	sack	15.6	1.21		1	5.4
5.22 Gal			FRESH WATER							
Cement Left In Pipe		Amount	29 ft			Reason		Shoe Joint		
Comment										

1.0 Real-Time Job Summary

1.1 Job Event Log

Type	Seq. No.	Activity	Date	Time	Source	PS Pump Press (psi)	DH Density (ppg)	Comb Pump Rate (bbl/min)	Pump Stg Tot (bbl)	Comments
Event	1	Call Out	3/17/2015	04:00:35	USER					HES CREW WAS CALLED OUT AT 04:00 WITH ONLOCATION TIME OF 10:00
Event	2	Pre-Convoy Safety Meeting	3/17/2015	06:50:10	USER					ALL HES CREW MEMBERS
Event	3	Crew Leave Yard	3/17/2015	07:00:19	USER					HES CREW AND EQUIPMENT READY AND LEFT YARD AT 07:00 1 F 550 PICK UP, 1 HT 400 PUMP TRUCK, 2 660 BULK TRUCKS
Event	4	Arrive at Location from Service Center	3/17/2015	10:00:25	USER					HES CREW ARRIVED ON TIME AT 10:00 RIG WAS RIGGING UP CASING CREW HES CREW SPOTTED AND RIGGED UP
Event	5	Assessment Of Location Safety Meeting	3/17/2015	10:10:31	USER					ALL HES CREW MEMBERS
Event	6	Pre-Rig Up Safety Meeting	3/17/2015	10:20:40	USER					ALL HES CREW MEMBERS
Event	7	Rig-Up Equipment	3/17/2015	10:30:50	USER					RIG UP IRON TO STAND PIPE, FRESH WATER LINES TO UP RIGHT AND RIG TANK, BULK LINES TO BULK TRUCK AND SILO
Event	8	Pre-Job Safety Meeting	3/17/2015	16:41:25	USER					ALL HES CREW MEMBERS AND RIG CREW
Event	9	Start Job	3/17/2015	17:14:08	COM5					TD: 3948.7 TP: 3948.7 SJ: 28.9 STAGE TOOL: 1820.57 CSG: 9 5/8 36# 429.46 OF 40# OH: 14 3/4 0-1800 13 1/2 1800-TD MUD: 9.7 VISC: 38 RIG CIRCULATED FOR 1 HOUR BEFORE CEMENT JOB WITH FULL RETURNS

Event	10	Prime Pumps	3/17/2015	17:23:58	COM5	69.0	8.33	2.0	2.0	PRIME LINES WITH 2 BBLS OF FRESH WATER AT 2 BBL/MIN AT 69 PSI
Event	11	Test Lines	3/17/2015	17:25:20	COM5	4790.0	8.38	0.00	2.0	PRESSURE TEST OK AT 4790 PSI KICK OUTS WORKING STALL OUT AT 1567 PSI
Event	12	Pump Spacer 1	3/17/2015	17:32:06	COM5	163.0	8.32	4.0	40.0	PUMP 40 BBLS OF FRESH WATER SPACER AT 4 BBL/MIN AT 163 PSI
Event	13	Pump Lead Cement	3/17/2015	17:42:14	COM5	550.0	12.88	8.0	179.7	VERSACEM 570 SKS 12.8 PPG 1.77 YIELD 9.31 GAL/SK LEAD CEMENT WEIGHT VERIFIED BY MUD SCALES SAMPLES WERE TAKEN 2.5 BOXES OF TUFF FIBER WERE ADDED IN THE FIRST 100 BBLS TOTAL OF 179.7 BBLS OF LEAD AWAY AVERAGE PRESSURE 550 PSI
Event	14	Pump Tail Cement	3/17/2015	18:10:00	COM5	315.00	12.82	6.00	78.9	VARICEM 210 SKS 12.8 PPG 2.11 YIELD 11.77 GAL/SK TAIL CEMENT WEIGHT VERIFIED BY MUD SCALES SAMPLES WERE TAKEN TOTAL OF 78.9 BBLS OF TAIL AWAY AVERAGE PRESSURE 315 PSI
Event	15	Shutdown	3/17/2015	18:23:19	USER	23.00	11.49	0.00	78.9	SHUTDOWN END OF CEMENT READY TANKS FOR DISPLACEMENT
Event	16	Drop Plug	3/17/2015	18:28:00	USER					DROP WIPER DART AWAY NO ISSUES
Event	17	Pump Displacement	3/17/2015	18:29:10	COM5	480.0	8.44	10.0	302.3	PUMP 302.3 BBLS OF FRESH WATER DISPLACEMENT AT 10 BBL/MIN AVERAGE PRESSURE 480 PSI
Event	18	Slow Rate	3/17/2015	18:44:57	USER	104.00	8.41	4.00	130.0	SLOW RATE AT 130 BBLS AWAY TO 4 BBL/MIN TO PASS DART THROUGH TOOL
Event	19	Resume	3/17/2015	18:49:49	USER	463.00	8.38	10.0	150.0	RESUME RATE AT 150 BBLS AWAY BACK TO 10 BBL/MIN
Event	20	Slow Rate	3/17/2015	19:03:59	USER	802.00	8.37	4.10	292.0	SLOW RATE LAST 10 BBLS TO 4 BBL/MIN TO BUMP PLUG
Event	21	Bump Plug	3/17/2015	19:04:46	COM5	800.0	8.39	0.00	302.3	PLUG BUMP AT 302.3 AWAY AT 4 BB/MIN AT 800 PSI AND WAS TOOK UP TO 1360 PSI

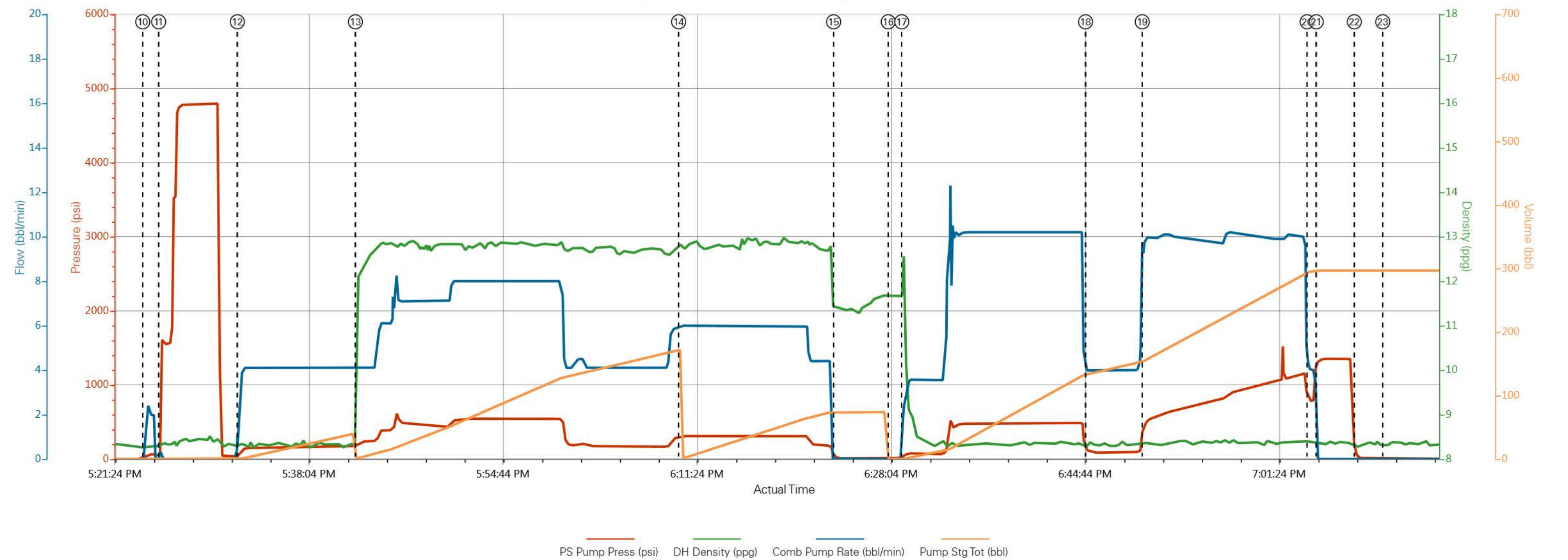
Event	22	Check Floats	3/17/2015	19:08:02	USER	1360.0	8.29	0.00	302.3	FLOATS HELD WITH 1 BBL BACK TO DISPLACEMENT TANKS
Event	23	Drop Opening Device For Multiple Stage Cementer	3/17/2015	19:10:29	USER					OPENING DEVICE WAS DROP WITH NO ISSUES CO REP REQUESTED TO WAIT 15 MINS FOR DEVICE TO FALL
Event	24	Open Multiple Stage Cementer	3/17/2015	19:26:40	USER	580.0	8.37	2.5	1.0	STAGE TOOL WAS OPEN AT 2.5 BBL/MIN AT 580 PSI 8 BBLS OF FRESH WATER WERE PUMP TO REGAIN RETURNS
Event	25	Pump Spacer 1	3/17/2015	19:29:28	COM5	182.00	8.32	2.0	20	20 BBLS OF FRESH WATER SPACER PUMP AT 2BBLS MIN AT 180 PSI
Event	26	Pump Tail Cement	3/17/2015	19:40:13	USER	520.0	12.85	8.0	380.5	VARICEM 980 SKS 12.8 PPG 2.18 YIELD 12.11 GAL/SK TAIL CEMENT WEIGHT WAS VERIFIED BY MUD SCALES SAMPLES WERE TAKEN THE LAST 100 BBLS OF TAIL 2.5 BOXES OF TUFF FIBER WERE ADDED TOTAL OF 380.5 BBLS OF TAIL AWAY WITH AVERAGE PRESSURE AT 520 PSI WITH 300 BBLS OF TAIL AWAY WELL LOSS RETURNS HAD 60BBLS OF 1 ST STAGE LEAD TO SURFACE
Event	27	Shutdown	3/17/2015	20:34:26	USER	21.00	12.88	0.00	380.5	SHUTDOWN END OF CEMENT READY TANKS FOR DISPLACEMENT
Event	28	Drop Plug	3/17/2015	20:35:52	USER					CLOSING PLUG AWAY WITH NO ISSUES
Event	29	Pump Displacement	3/17/2015	20:38:34	COM5	530.0	8.44	10.0	140.7	PUMP 140.7 BBLS OF FRESH WATER SPACER AT 10 BBL MIN WITH AVERAGE PRESSURE AT 530 PSI DURING DISPLACEMENT WELL HAD NO RETURNS
Event	30	Slow Rate	3/17/2015	20:55:33	USER	316.00	8.28	4.10	130.7	SLOW RATE LAST 10 BBLS TO 4 BBL MIN WITH 250 PSI
Event	31	Bump Plug	3/17/2015	20:59:32	COM5	300.0	8.38	0.00	140.7	PLUG BUMP AT 300 PSI AND WAS TOOK UP TO 1640 PSI TO CLOSE STAGE TOOL
Event	32	Release Casing Pressure	3/17/2015	21:02:53	USER	1640.0	8.34	0.0	140.7	PRESSURE WAS RELEASED WITH 1 BBL BACK TO DISPLACEMENT TANKS STAGE TOOL WAS CLOSED

HES CREW WAITED FOR RIG TO GO IN AND TAG CEMENT, HES CREW LOADED TOP OUT CEMENT ONTO EMPTY BULK TRUCK AND WAITED TO TOP OUT WELL RIG RAN IN 840 FT OF TUBING TO TAG CEMENT

Event	33	Comment	3/17/2015	21:05:02	USER					
Event	34	Pump Spacer	3/18/2015	02:42:34	USER	20.00	8.42	2.0	5.0	PUMP 5 BBLS TO MAKE SURE TUBING IS CLEAR
Event	35	Pump Tail Cement	3/18/2015	02:57:40	COM5	59.00	15.62	2.00	44.0	HALCEM 204 SKS 15.6 PPG 1.21 YIELD 5.4 GAL/SK TAIL CEMENT WEIGHT VERIFIED BY MUD SCALES TOTAL ON 1ST TOP OUT 44 BBLS OF TAIL AWAY
Event	36	Shutdown	3/18/2015	03:36:45	USER	131.00	9.40	0.00	44.0	SHUTDOWN AND CHANGE OUT BULK TRUCKS
Event	37	Resume	3/18/2015	03:48:18	USER	8.00	15.63	0.90	70.0	RESUME TOP OU T CEMENT HALCEM 325 SKS 15.6 PPG 1.21 YIELD 5.4 GAL/SK TAIL CEMENT WEIGHT VERIFIED BY MUD SCALES TOTAL ON 2ND TOP OUT 70 BBLS OF TAIL AWAY RIG TOOK CEMENT RETURNS AND TOP OFF WELL RGU 44-26-198 WITH 18 BBLS
Event	38	Pump Spacer	3/18/2015	04:37:33	USER	421.00	8.52	1.50	5.0	PUMP 5 BBLS OF FRESH WATER BEHIND TO CLEAR LINES
Event	39	Shutdown	3/18/2015	04:40:17	USER	290.00	8.33	0.00	5.0	SHUTDOWN CEMENT TO SURFACE 18 BBLS TO SURFACE WAIT TO SEE IF CEMENT FALLS
Event	40	Comment	3/18/2015	04:53:32	COM5					HES CREW WASHED UP PUMP WHILE WAITING ON CEMENT TO SEE IF IT WOULD FALL BACK
Event	41	Pump Cement	3/18/2015	05:22:32	COM5	7.00	15.63	1.0	12.0	CEMENT FELL BACK 20 FT HES TOP OUT 12 BBLS OF CEMENT WITH 4 BBLS TO SURFACE HALCEM 56 SKS 15.6 PPG 1.21 YIELD 5.4 GAL/SK TAIL CEMENT WEIGHT VERIFIED BY MUD SCALES TOTAL ON 3RD TOP OUT 12 BBLS OF TAIL AWAY 10 GALS OF CAL CHLORIDE WERE DUMPED DOWN BACK SIDE WHILE PUMPING
Event	42	Pump Spacer	3/18/2015	05:38:09	USER	35.00	8.60	2.00	5.0	5 BBLS OF FRESH WATER BEHIND TO CLEAR LINES
Event	43	Shutdown	3/18/2015	05:39:47	USER	24.00	8.30	0.00	5.0	SHUTDOWN CEMENT TO SURFACE

Event	44	End Job	3/18/2015	05:45:21	USER	CEMENT JOB WENT GOOD WITH NO ISSUES, PLUGS BUMP FLOATS HELD, TOOL CLOSED AND WELL TOP OUT RIG USED 40 LBS OF SUGAR
Event	45	Post-Job Safety Meeting (Pre Rig-Down)	3/18/2015	05:50:39	USER	ALL HES CREW MEMBERS
Event	46	Pre-Rig Down Safety Meeting	3/18/2015	05:55:52	USER	ALL HES CREW MEMBERS
Event	47	Rig-Down Equipment	3/18/2015	06:10:08	USER	RIG DOWN RIG FLOOR, GROUND IRON, FRESH WATER LINES, BULK LINES WASH UP AND BLOW DOWN PUMP
Event	48	Pre-Convoy Safety Meeting	3/18/2015	07:20:19	USER	ALL HES CREW MEMBERS
Event	49	Crew Leave Location	3/18/2015	07:30:33	USER	THANK YOU FOR USING HALLIBURTON CEMENT CHRIS KUKUS AND CREW

WPX ENERGY / FEDERAL RGU 443-26-198 / 9 5/8 MULTIPLE STAGES



- | | | |
|--|--------------------|------------------------|
| ① Call Out | ⑨ Start Job | ⑰ Pump Displacement |
| ② Pre-Convoy Safety Meeting | ⑩ Prime Pumps | ⑱ Slow Rate |
| ③ Crew Leave Yard | ⑪ Test Lines | ⑲ Resume Rate |
| ④ Arrive at Location from Service Center | ⑫ Pump Spacer 1 | 20 Slow Rate |
| ⑤ Assessment Of Location Safety Meeting | ⑬ Pump Lead Cement | 21 Bump Plug |
| ⑥ Pre-Rig Up Safety Meeting | ⑭ Pump Tail Cement | 22 Check Floats |
| ⑦ Rig-Up Equipment | ⑮ Shutdown | 23 Drop Opening Device |
| ⑧ Pre-Job Safety Meeting | ⑯ Drop Plug | 24 Pump Spacer 1 |

▼ HALLIBURTON | iCem® Service

Created: 2015-03-17 16:30:16, Version: 4.1.107

Edit

Customer: WPX ENERGY LLC-EBUS

Job Date: 3/17/2015 4:33:35 PM

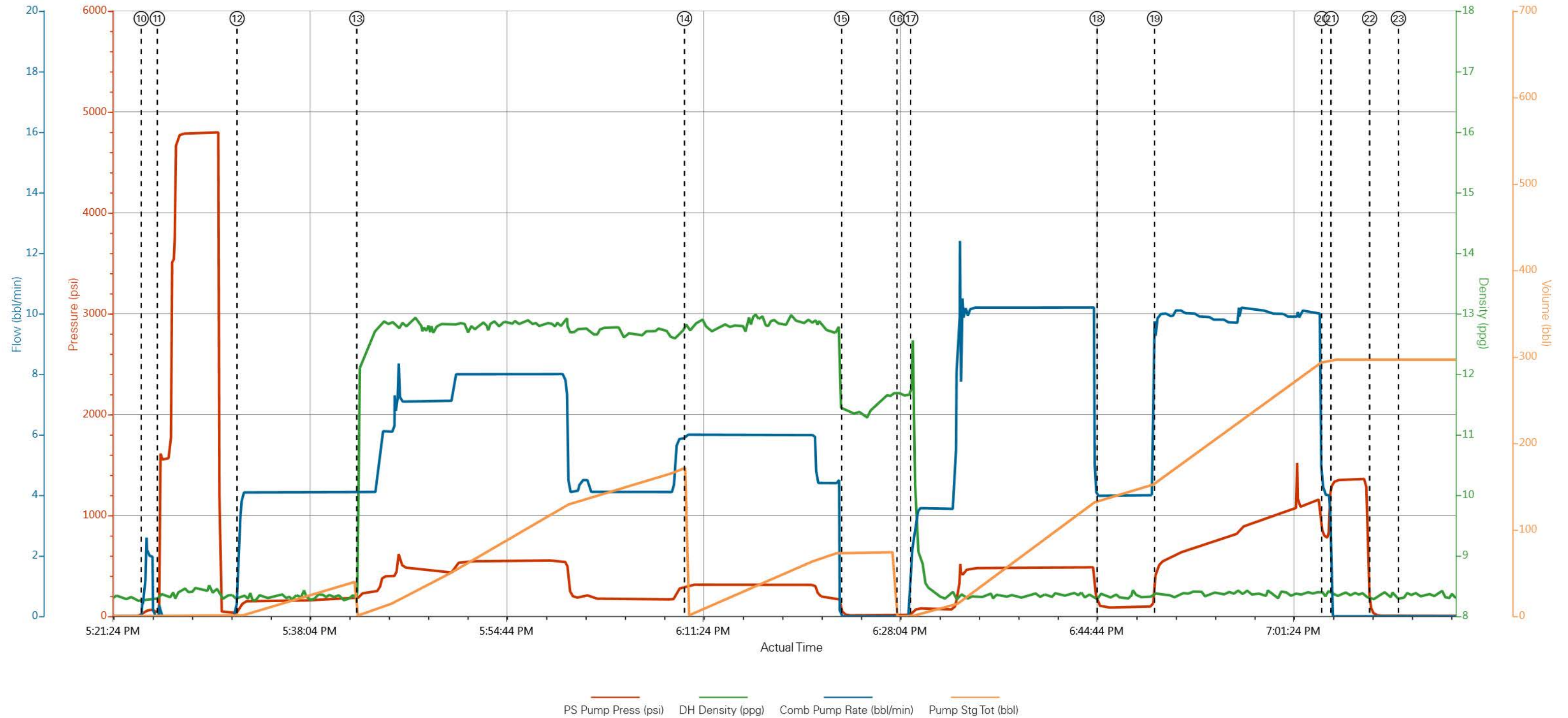
Well: FEDERAL RGU 443-26-198

Representative: W.C. WILSON

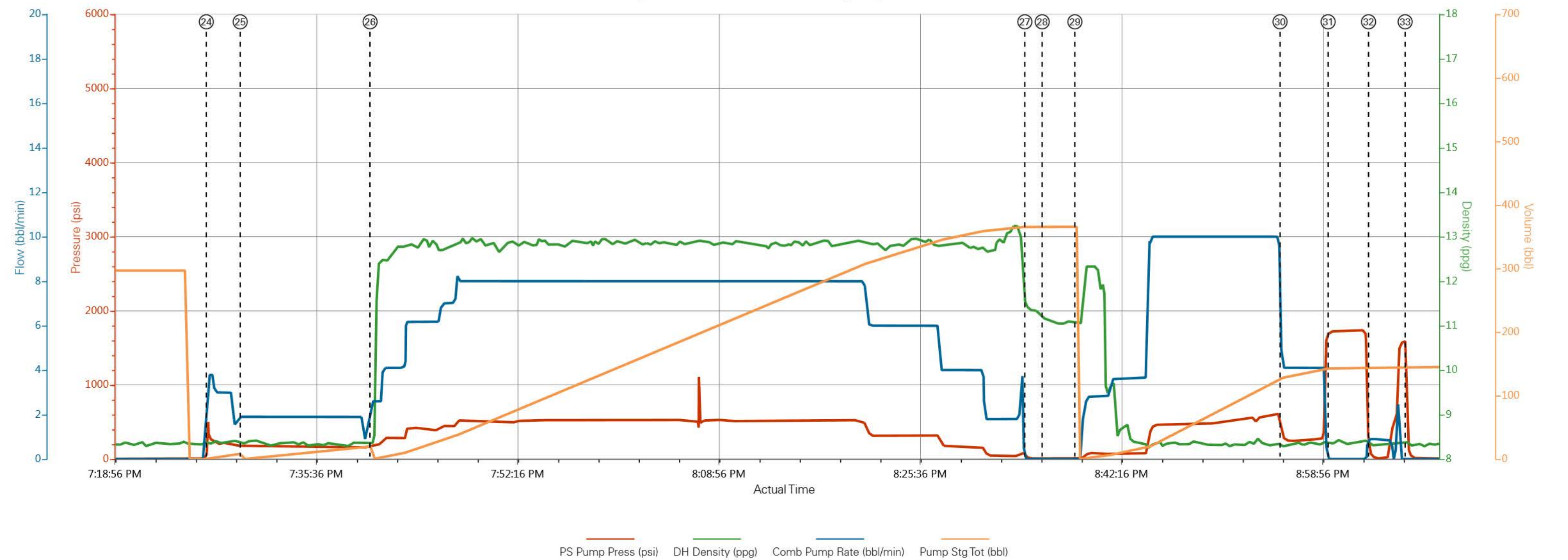
Sales Order #: 902195153 1ST STAGE

ELITE #3: JUSTIN BROWN / CHRIS KUKUS

WPX ENERGY / FEDERAL RGU 443-26-198 / 9 5/8 MULTIPLE STAGES

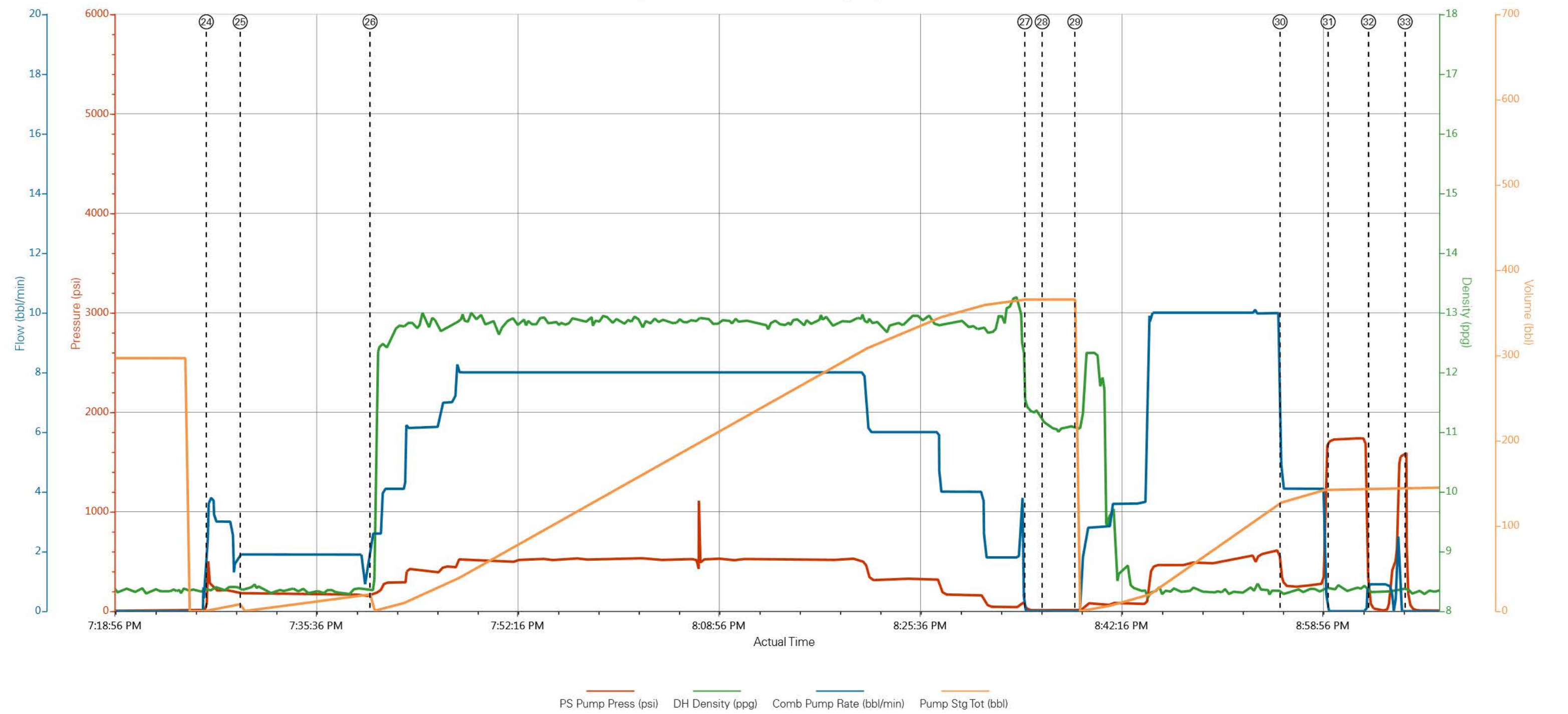


WPX ENERGY / FEDERAL RGU 443-26-198 / 9 5/8 MULTIPLE STAGES

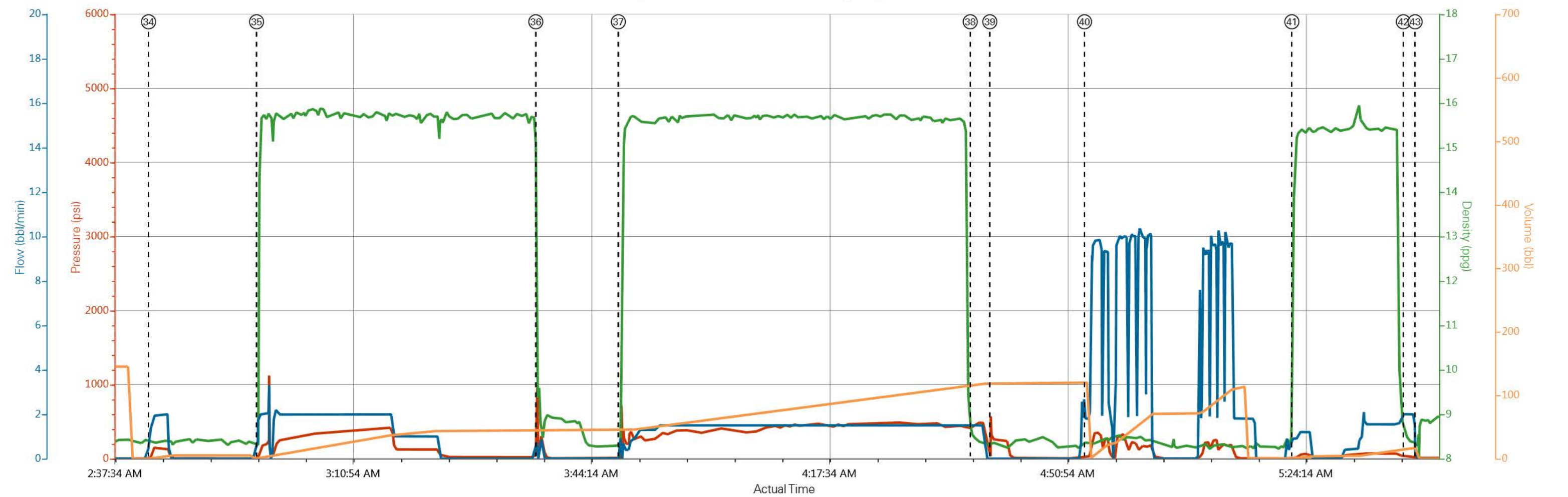


- | | | | | |
|--|--------------------|---------------------------------|----------------------------|------------|
| ① Call Out | ⑨ Start Job | ⑰ Pump Displacement | 25 Pump Spacer 1 | 33 End Job |
| ② Pre-Convoy Safety Meeting | ⑩ Prime Pumps | ⑱ Slow Rate | 26 Pump Lead Cement | |
| ③ Crew Leave Yard | ⑪ Test Lines | ⑲ Resume Rate | 27 Shutdown | |
| ④ Arrive at Location from Service Center | ⑫ Pump Spacer 1 | 20 Slow Rate | 28 Drop Plug | |
| ⑤ Assessment Of Location Safety Meeting | ⑬ Pump Lead Cement | 21 Bump Plug | 29 Pump Displacement | |
| ⑥ Pre-Rig Up Safety Meeting | ⑭ Pump Tail Cement | 22 Check Floats | 30 Slow Rate | |
| ⑦ Rig-Up Equipment | ⑮ Shutdown | 23 Drop Opening Device | 31 Bump Plug | |
| ⑧ Pre-Job Safety Meeting | ⑯ Drop Plug | 24 Open Multiple Stage Cementer | 32 Release Casing Pressure | |

WPX ENERGY / FEDERAL RGU 443-26-198 / 9 5/8 MULTIPLE STAGES



WPX ENERGY / FEDERAL RGU 443-26-198 / 9 5/8 MULTIPLE STAGES



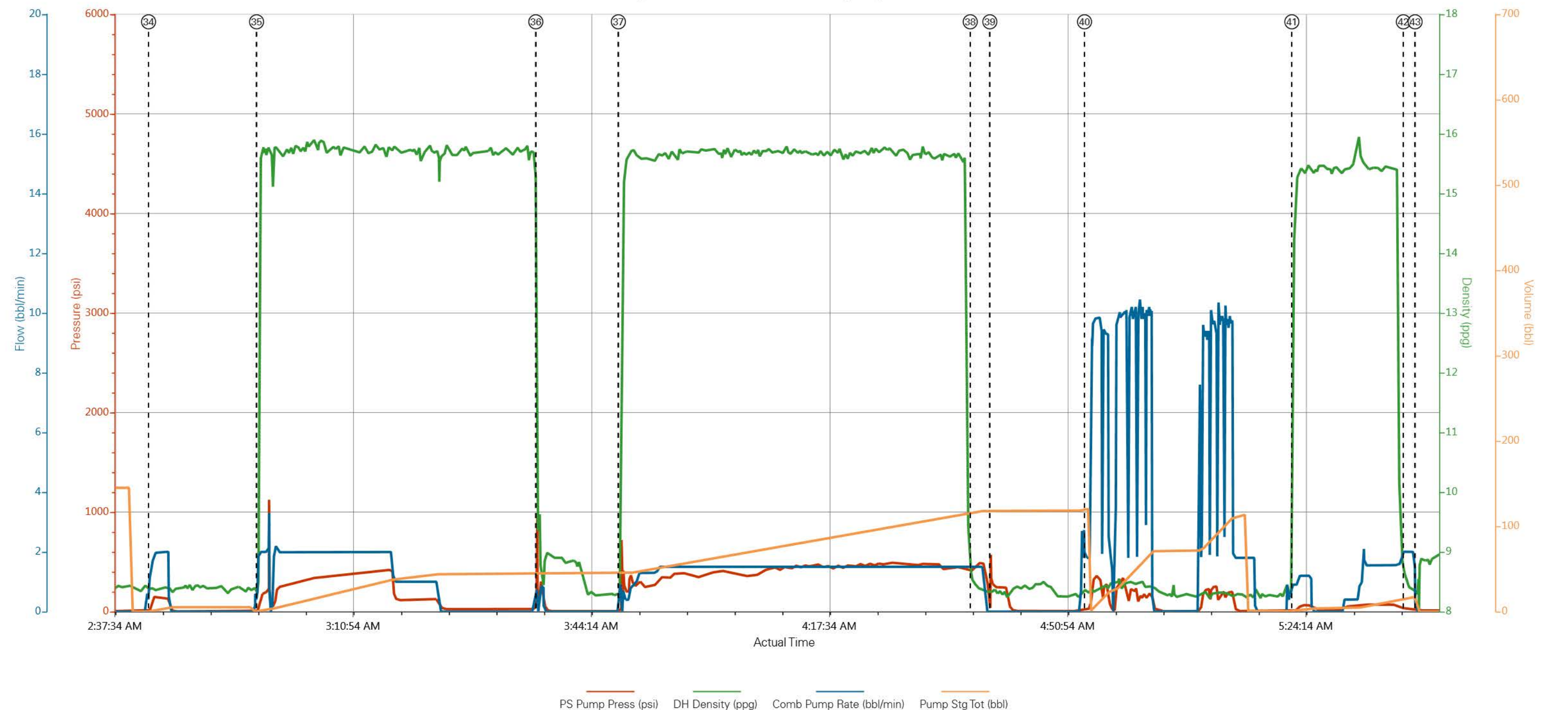
PS Pump Press (psi) DH Density (ppg) Comb Pump Rate (bbl/min) Pump Stg Tot (bbl)

① Call Out	⑨ Start Job	⑰ Pump Displacement	25 Pump Spacer 1	33 Comment	41 Pump Cement	49 Pre-Convoy Safety Meeting
② Pre-Convoy Safety Meeting	⑩ Prime Pumps	⑱ Slow Rate	26 Pump Tail Cement	34 Pump Spacer	42 Pump Spacer	50 Crew Leave Location
③ Crew Leave Yard	⑪ Test Lines	⑲ Resume Rate	27 Shutdown	35 Pump Tail Cement	43 Shutdown	
④ Arrive at Location from Service Center	⑫ Pump Spacer 1	20 Slow Rate	28 Drop Plug	36 Shutdown	44 End Job	
⑤ Assessment Of Location Safety Meeting	⑬ Pump Lead Cement	21 Bump Plug	29 Pump Displacement	37 Resume Top Out	45 Post-Job Safety Meeting (Pre Rig-Down)	
⑥ Pre-Rig Up Safety Meeting	⑭ Pump Tail Cement	22 Check Floats	30 Slow Rate	38 Pump Spacer	46 Pre-Rig Down Safety Meeting	
⑦ Rig-Up Equipment	⑮ Shutdown	23 Drop Opening Device	31 Bump Plug	39 Shutdown	47 Rig-Down Equipment	
⑧ Pre-Job Safety Meeting	⑯ Drop Plug	24 Open Multiple Stage Cementer	32 Release Casing Pressure	40 Comment	48 End Job	

▼ HALLIBURTON | iCem® Service

Created: 2015-03-17 16:30:16, Version: 4.1.107 [Edit](#)

WPX ENERGY / FEDERAL RGU 443-26-198 / 9 5/8 MULTIPLE STAGES



HALLIBURTON

Water Analysis Report

Company: WPX ENERGY

Submitted by: CHRIS KUKUS

Attention: LARRY COOKSEY

Lease FEDERAL

Well # RGU 443-26-198

Date: 3/18/2015

Date Rec.: 3/18/2015

S.O.# 902195153

Job Type: TWO STAGE

Specific Gravity	<i>MAX</i>	1
pH	<i>8</i>	7
Potassium (K)	<i>5000</i>	0 Mg / L
Calcium (Ca)	<i>500</i>	120 Mg / L
Iron (FE2)	<i>300</i>	0 Mg / L
Chlorides (Cl)	<i>3000</i>	0 Mg / L
Sulfates (SO ₄)	<i>1500</i>	UNDER 400 Mg / L
Hardness		50 Mg / L
Temp	<i>40-80</i>	60 Deg
Total Dissolved Solids		200 Mg / L

Respectfully: CHRIS KUKUS

Title: CEMENTING SUPERVISOR

Location: GRAND JUNCTION , CO

NOTICE:

This report is limited to the described sample tested. Any person using or relying on this report agrees that Halliburton shall not be liable for any loss or damage whether due to act or omission resulting from such report or i

Sales Order #: 0902195153	Line Item: 10	Survey Conducted Date: 3/18/2015
Customer: WPX ENERGY ROCKY MOUNTAIN LLC-EBUS		Job Type (BOM): CMT MULTIPLE STAGES BOM
Customer Representative:		API / UWI: (leave blank if unknown) 05-103-11984-00
Well Name: FEDERAL		Well Number: 0080129287
Well Type: DIRECTIONAL GAS	Well Country: USA	
H2S Present: No	Well State: COLORADO	Well County: RIO BLANCO

Dear Customer,

We hope that you were satisfied with the service quality of this job performed by Halliburton. It is the aim of our management and service personnel to deliver equipment and service of a standard unmatched in the service sector of the energy industry.

Please take the time to let us know if our performance met with your satisfaction. Please be as critical as possible to ensure we constantly improve our service. Your comments are of great value to us and are intended for the exclusive use of Halliburton.

CUSTOMER SATISFACTION SURVEY

CATEGORY	CUSTOMER SATISFACTION RESPONSE	
Survey Conducted Date	The date the survey was conducted	3/18/2015
Survey Interviewer	The survey interviewer is the person who initiated the survey.	HX35027
Customer Participation	Did the customer participate in this survey? (Y/N)	No
Customer Representative	Enter the Customer representative name	
HSE	Was our HSE performance satisfactory? Circle Y or N	
Equipment	Were you satisfied with our Equipment? Circle Y or N	
Personnel	Were you satisfied with our people? Circle Y or N	
Customer Comment	Customer's Comment	

CUSTOMER SIGNATURE

Sales Order #: 0902195153	Line Item: 10	Survey Conducted Date: 3/18/2015
Customer: WPX ENERGY ROCKY MOUNTAIN LLC-EBUS		Job Type (BOM): CMT MULTIPLE STAGES BOM
Customer Representative:		API / UWI: (leave blank if unknown) 05-103-11984-00
Well Name: FEDERAL		Well Number: 0080129287
Well Type: DIRECTIONAL GAS	Well Country: USA	
H2S Present: No	Well State: COLORADO	Well County: RIO BLANCO

KEY PERFORMANCE INDICATORS

General	
Survey Conducted Date	3/18/2015
The date the survey was conducted	

Cementing KPI Survey	
Type of Job	0
Select the type of job. (Cementing or Non-Cementing)	
Select the Maximum Deviation range for this Job	Vertical
What is the highest deviation for the job you just completed? This may not be the maximum well deviation.	
Total Operating Time (hours)	9
Total Operating Hours Including Rig-up, Pumping, Rig-down. Enter in decimal format.	
HSE Incident, Accident, Injury	No
HSE Incident, Accident, Injury. This should be recordable incidents only.	
Was the job purpose achieved?	Yes
Was the job delivered correctly as per customer agreed design?	
Pumping Hours	7
Total number of hours pumping fluid on this job. Enter in decimal format.	
Type of Rig Classification Job Was Performed	Drilling Rig (Portable)
Type Of Rig (classification) Job Was Performed On	
Number Of JSAs Performed	6
Number Of Jsas Performed	
Was this a Primary Cement Job (Yes / No)	Yes
Primary Cement Job= Casing job, Liner job, or Tie-back job.	
Number of Unplanned Shutdowns	0
Unplanned shutdown is when injection stops for any period of time.	
Customer Non-Productive Rig Time (hrs)	0

Sales Order #: 0902195153	Line Item: 10	Survey Conducted Date: 3/18/2015
Customer: WPX ENERGY ROCKY MOUNTAIN LLC-EBUS		Job Type (BOM): CMT MULTIPLE STAGES BOM
Customer Representative:		API / UWI: (leave blank if unknown) 05-103-11984-00
Well Name: FEDERAL		Well Number: 0080129287
Well Type: DIRECTIONAL GAS	Well Country: USA	
H2S Present: No	Well State: COLORADO	Well County: RIO BLANCO

Lost time due to Halliburton in the start, execution, or completion of an ordered service or product, or delays in a follow-on service. Enter in decimal format. 0 if none.	
Was the non productive time or the unplanned shutdown caused by a problem with a piece of equipment? Was the non productive time or the unplanned shutdown caused by a problem with a piece of equipment?	No
Did We Run Wiper Plugs? Did We Run Top And Bottom Casing Wiper Plugs?	None
If a top plug was run, was the plug bumped? (Yes/No/N/A) If a top plug was run, was the plug bumped? (Yes/No/N/A)	Yes
If applicable, was Halliburton float equipment used? (Yes/No/N/A) If applicable, was Halliburton float equipment used? (Yes/No/N/A)	No
If applicable, did the floats hold? (Yes/No/N/A) If applicable, did the floats hold? (Yes/No/N/A)	Yes
Mixing Density of Job Stayed in Designed Density Range (0-100%) Density Range defined as +/- .20 ppg. Calculation: Total BBLs cement mixed at designed density divided by total BBLs of cement multiplied by 100	80
Pump Rate (percent) of Job Stayed At Designed Pump Rate Pump Rate range defined as +/- 1bbl/min. Calculation: Total BBLs of fluid pumped at the designed rate divided by Total BBLs of fluid pumped, multiplied by 100	80
If applicable, were there returns throughout the job? (Yes/No/N/A) If applicable, were there returns throughout the job? (Yes/No/N/A)	No
Nbr of Remedial Plug Jobs Rqd - HES Number Of Remedial Plug Jobs Needed After Primary Plug Pumped By HES	0
Nbr of Remedial Sqz Jobs Rqd - HES Number Of Remedial Squeeze Jobs Required After Primary Job Performed By HES	0