

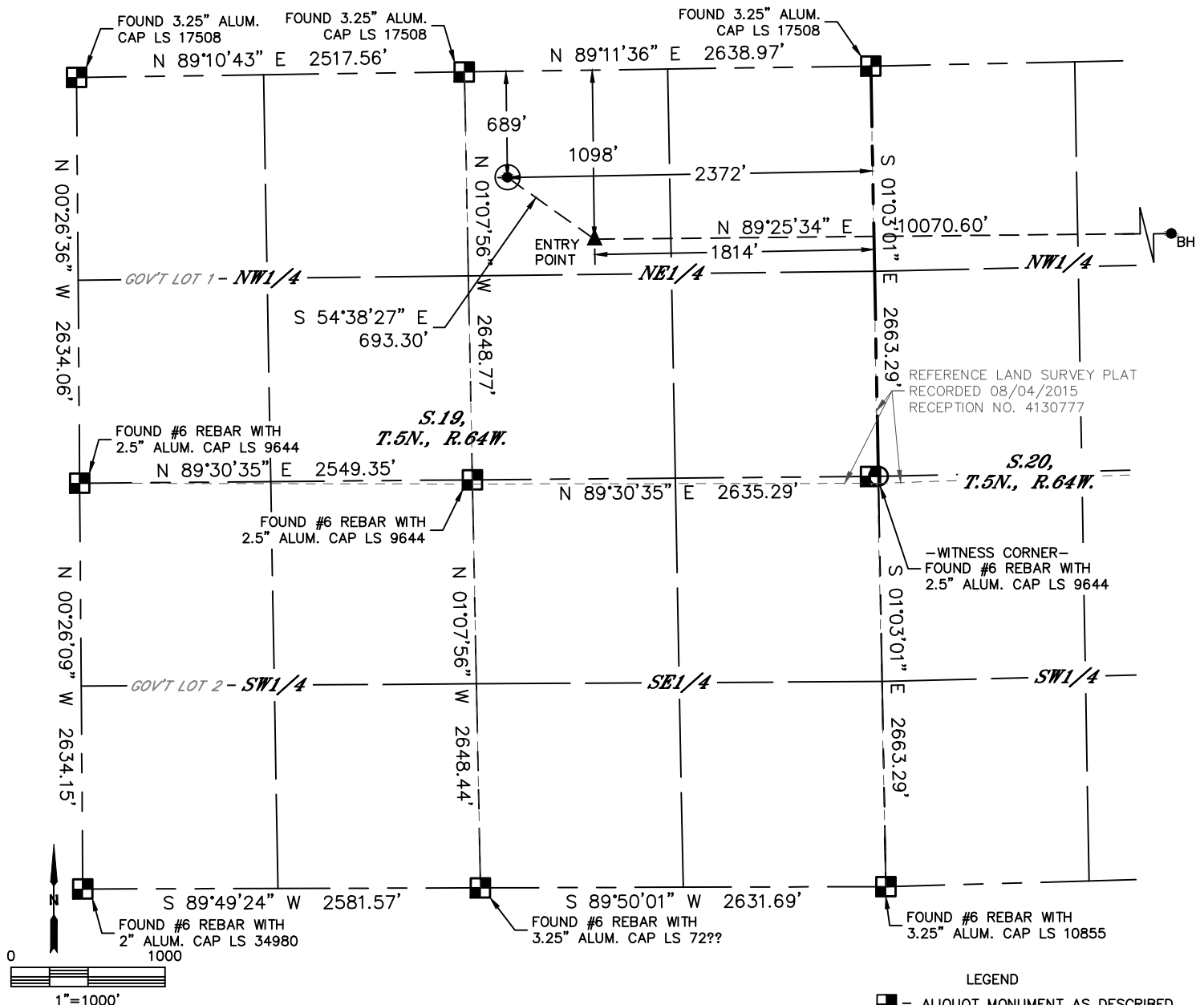


Lat40°, Inc. 6250 W. 10th Street, Unit 2 Greeley, CO 970-515-5294

WELL LOCATION CERTIFICATE

KLEIN 19N-202

SECTION: 19
TOWNSHIP: 5N
RANGE: 64W



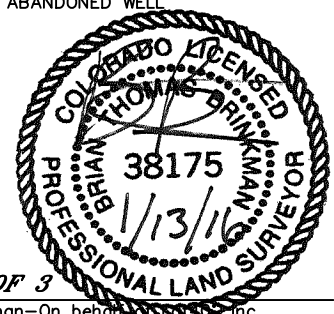
CLIENT: PDC ENERGY				LANDMAN: AL BRAGG			
INSTRUMENT OPERATOR: BRIAN ROTTINGHAUS				SURVEY DATE: 11-26-2013		SURFACE USE: CROP LAND	
SHL FOOTAGE	SHL LAT°	SHL LONG°	SHL PDOP	SHL ELEV	SHL 1/4/1/4	SHL S-T-R	
689	FNL	2372	FEL	40.38999	-104.59187	2.1	4628

BHL FOOTAGE	BHL LAT°	BHL LONG°	BHL S-T-R	EP LAT°	EP LONG°	EP S-T-R
1176	FNL	2306	FEL	40.38886	-104.55371	21-5-64

NEAREST CULTURAL ITEMS	
BUILDING	±436' NW
BUILDING UNIT	±513' NW
HIGH OCCUPANCY BUILDING UNIT	5280' +
DESIGNATED OUTSIDE ACTIVITY AREA	5280' +
PUBLIC ROAD (HIGHWAY 34)	±692' N
ABOVE GROUND UTILITY	±260' W
RAILROAD	±3167' SE
PROPERTY LINE	±266' W

NOTE:
1) Bearings shown are Grid Bearings of the Colorado State Plane Coordinate System, North Zone, North American Datum 1983. The lineal dimensions as contained herein are based upon the "U.S. Survey Foot."
2) Distances to section lines measured at 90 degrees from said section lines.
3) Ground elevations are based on an observed GPS elevation (NAVD 1988 DATUM).
4) Latitude and Longitude shown are (NAD 83 DATUM).
5) IMPROVEMENTS: See LOCATION DRAWING for all visible improvements within 500' of oil and gas location.
6) This map does not represent a boundary survey.

- LEGEND
- = ALIQUOT MONUMENT AS DESCRIBED
 - = CALCULATED POSITION
 - = SURFACE HOLE LOCATION (SHL)
 - ▲ = ENTRY POINT LOCATION (EP)
 - BH = BOTTOM HOLE LOCATION (BHL)
 - ⊕ = EXISTING WELL
 - ⊙ = ABANDONED WELL



SHEET 1 OF 3

Brian T. Brinkman—On behalf of Lat40°, Inc.
Colorado Licensed Professional Land Surveyor No. 38175
DATE: 1/13/2016
PROJECT#: 2013130

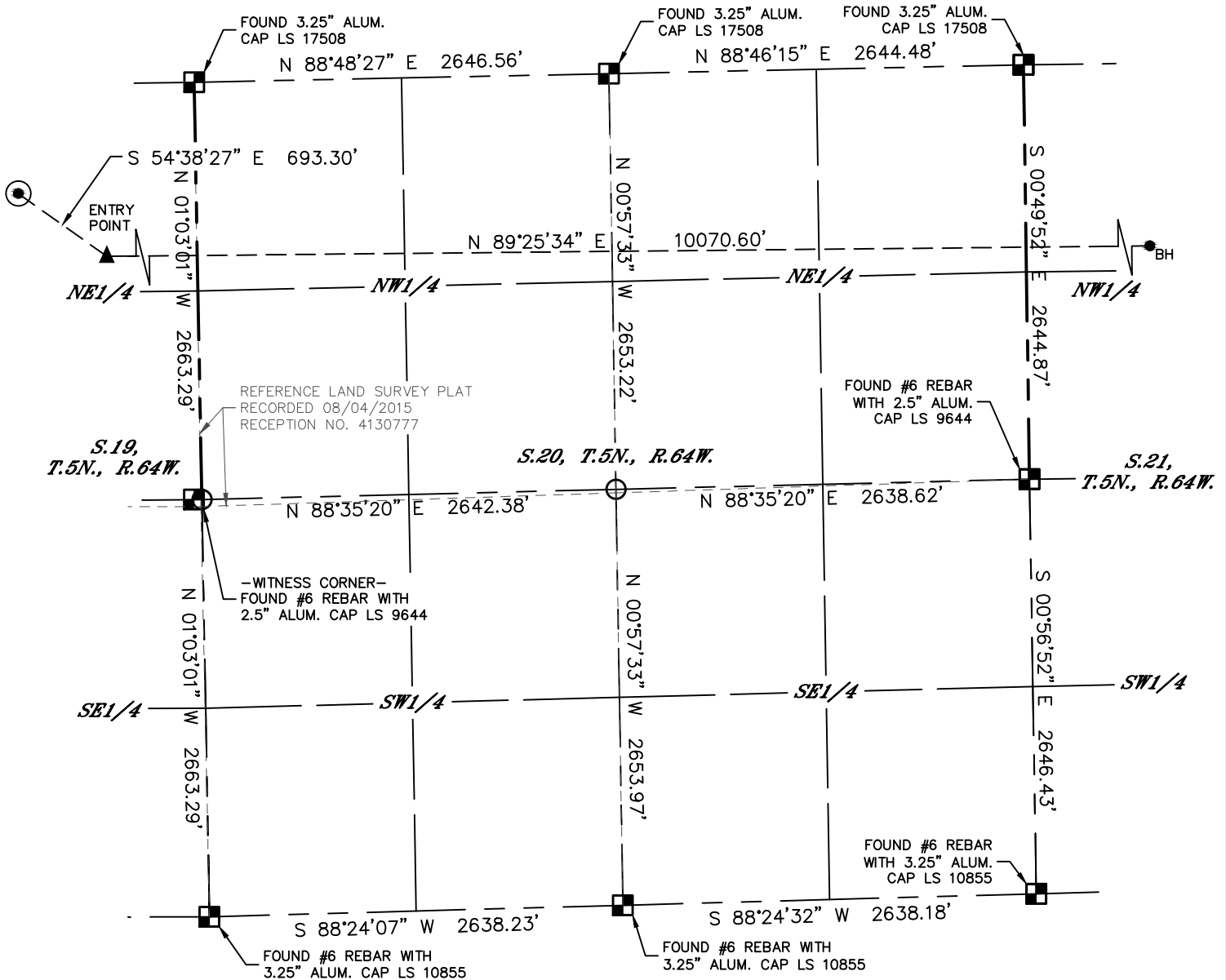


Lat40°, Inc. 6250 W. 10th Street, Unit 2 Greeley, CO 970-515-5294

WELL LOCATION CERTIFICATE

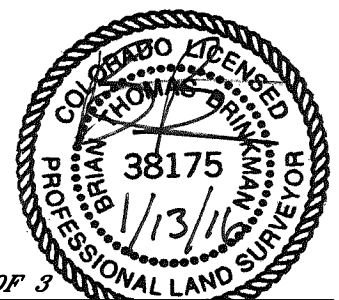
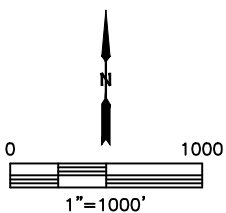
KLEIN 19N-202

SECTION: 19
TOWNSHIP: 5N
RANGE: 64W



LEGEND

- = ALIQUOT MONUMENT AS DESCRIBED
- = CALCULATED POSITION
- = SURFACE HOLE LOCATION (SHL)
- ▲ = ENTRY POINT LOCATION (EP)
- _{BH} = BOTTOM HOLE LOCATION (BHL)
- ⊙ = EXISTING WELL
- ⊙ = ABANDONED WELL



SHEET 2 OF 3

Brian T. Brinkman—On behalf of Lat40°, Inc.
Colorado Licensed Professional Land Surveyor No. 38175
DATE: 1/13/2016
PROJECT#: 2013130

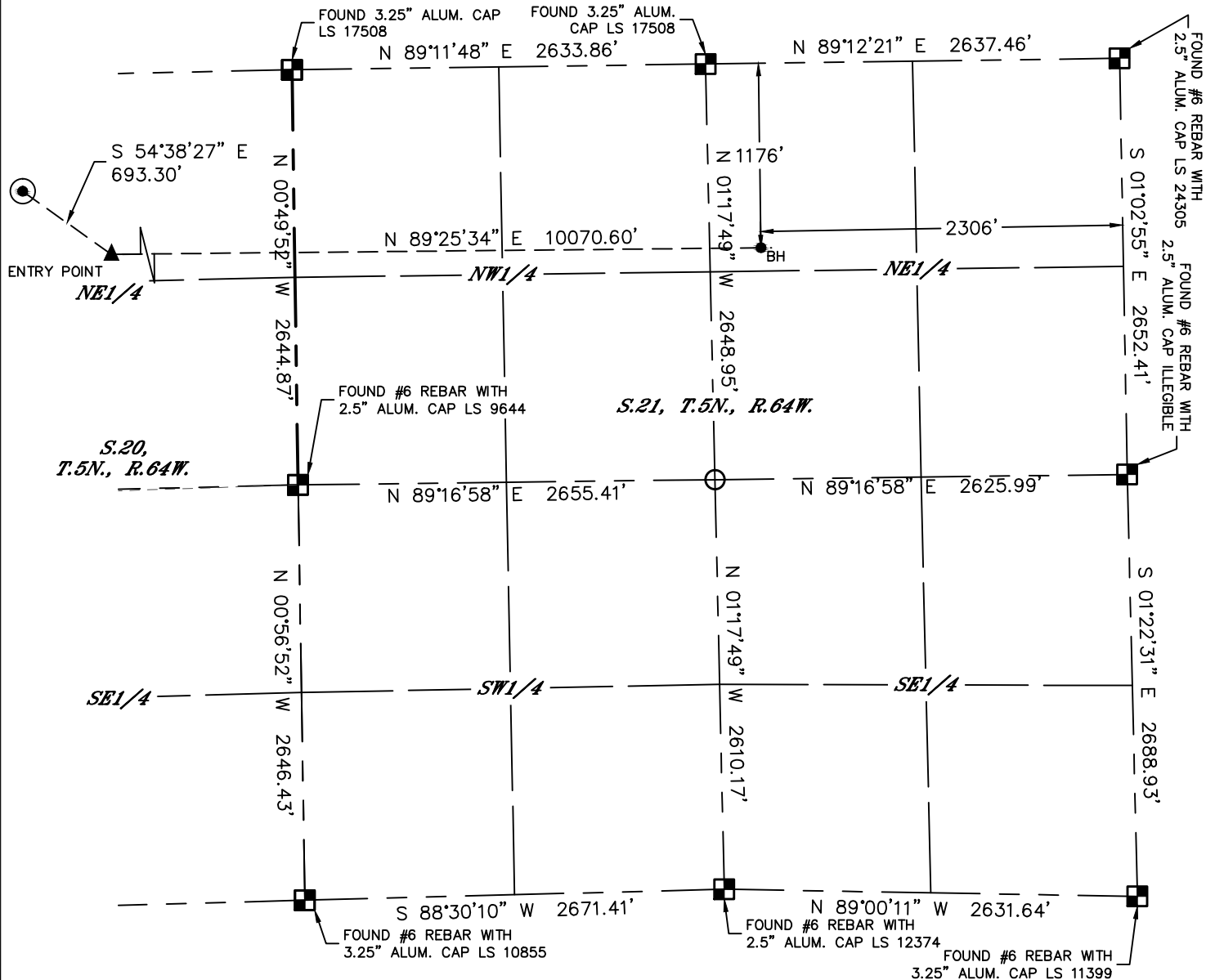


Lat40°, Inc. 6250 W. 10th Street, Unit 2 Greeley, CO 970-515-5294

WELL LOCATION CERTIFICATE

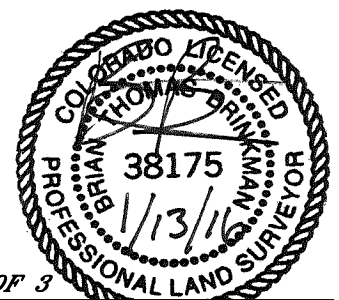
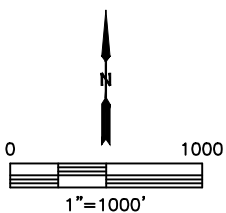
KLEIN 19N-202

SECTION: 19
TOWNSHIP: 5N
RANGE: 64W



LEGEND

- = ALIQUOT MONUMENT AS DESCRIBED
- = CALCULATED POSITION
- = SURFACE HOLE LOCATION (SHL)
- ▲ = ENTRY POINT LOCATION (EP)
- BH = BOTTOM HOLE LOCATION (BHL)
- ⊕ = EXISTING WELL
- ⊕ = ABANDONED WELL



SHEET 3 OF 3

Brian T. Brinkman—On behalf of Lat40°, Inc.
Colorado Licensed Professional Land Surveyor No. 38175
DATE: 1/13/2016
PROJECT#: 2013130

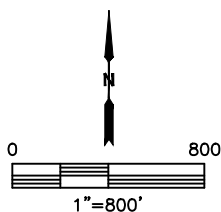
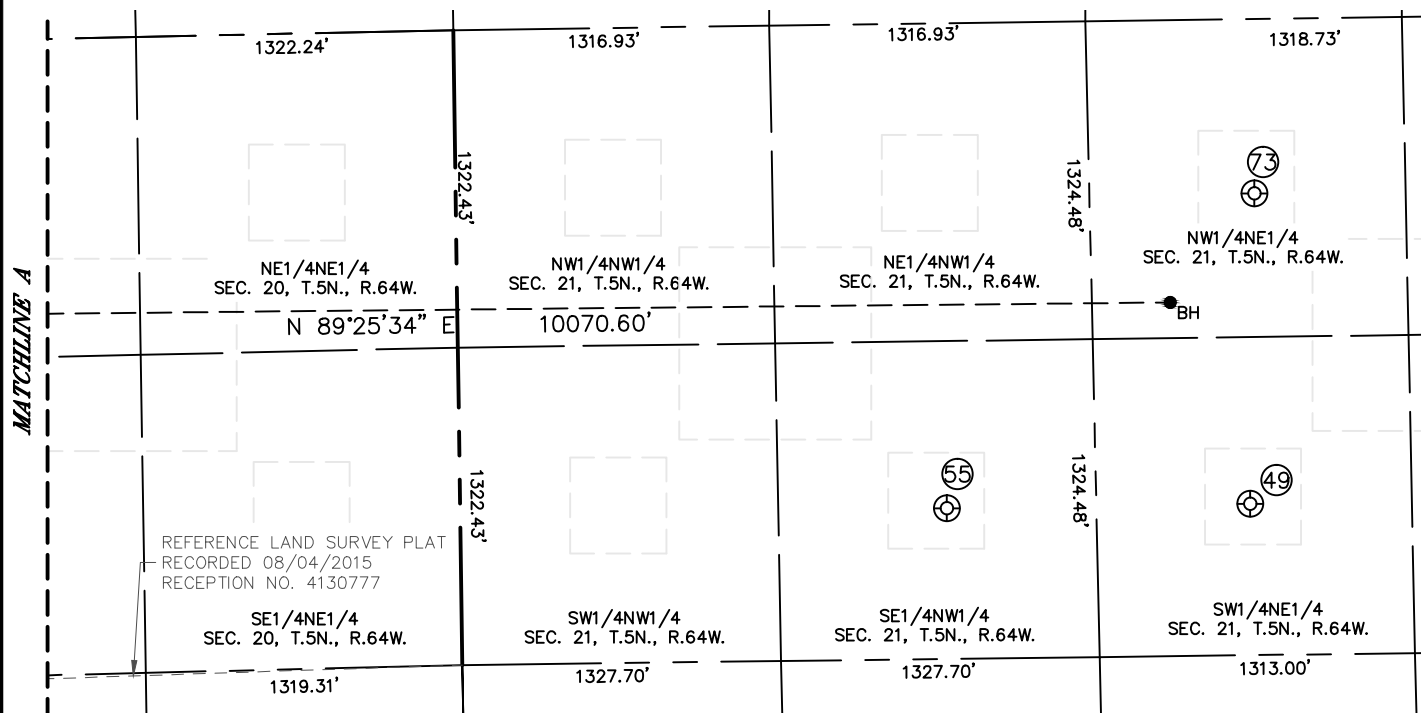
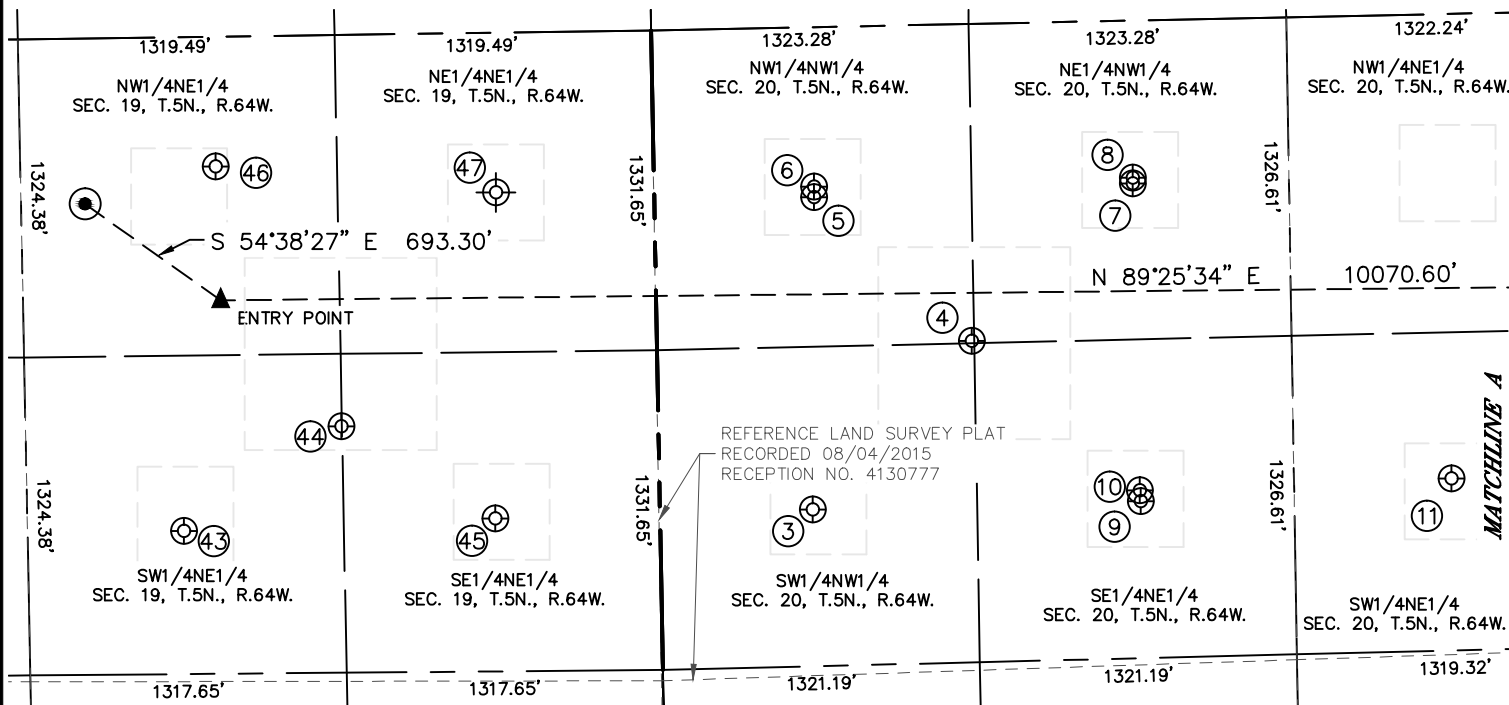


Lat40°, Inc. 6250 W. 10th Street, Unit 2 Greeley, CO 970-515-5294

SITE SKETCH

KLEIN 19N-202

SECTION: 19
TOWNSHIP: 5N
RANGE: 64W





Lat40°, Inc. 6250 W. 10th Street, Unit 2 Greeley, CO 970-515-5294

SITE SKETCH

KLEIN 19N-202

SECTION: 19
TOWNSHIP: 5N
RANGE: 64W

WELL NO.	WELL NAME	SHL FOOTAGE				SHL LAT°	SHL LONG°	PDOP	ELEV (FT.)	1/4/1/4
3	DUELL 20-1	2008	FNL	637	FWL	40.38641	-104.58103	2.1	4621	SWNW
4	PIGEON 5-JAN	1319	FNL	1312	FWL	40.38832	-104.57863	2.1	4621	NWNW
5	PIGEON 1-6B	708	FNL	665	FWL	40.38998	-104.58097	2.1	4622	NWNW
6	PIGEON 1	528	FNL	666	FWL	40.39010	-104.58096	2.1	4622	NWNW
7	LUCILLE 1-6I	679	FNL	1995	FWL	40.39010	-104.57620	2.0	4619	NENW
8	LUCILLE 20-1	654	FNL	1995	FWL	40.39016	-104.57620	2.0	4620	NENW
9	BRENT 1-6I	2002	FNL	2003	FWL	40.38647	-104.57613	3.1	4623	SENW
10	BRENT 1	1957	FNL	2000	FWL	40.38659	-104.57614	2.4	4623	SENW
11	VICTOR KLEIN 20-1A	1934	FNL	1985	FEL	40.38669	-104.57148	2.3	4619	SWNE
43	LOUIS KLEIN 19-2	2056	FNL	1985	FEL	40.38624	-104.59044	1.6	4625	SWNE
44	SETH 5	1630	FNL	1321	FEL	40.38742	-104.58807	1.3	4624	SWNE
45	LEWIS KLEIN 19-1	2022	FNL	686	FEL	40.38635	-104.58578	5.4	4623	SENE
46	SETH 1	540	FNL	1825	FEL	40.39040	-104.58991	1.9	4627	NWNE
47	PAIGE 1	665	FNL	659	FEL	40.39011	104.58570	N/A	4615	NENE
49	KOHLER 7-21	2018	FNL	1993	FEL	40.38655	-104.55255	2.0	4611	SWNE
55	KOHLER 6-21	2021	FNL	2034	FWL	40.38653	-104.55708	1.8	4613	SENW
73	PLATTE VALLEY 2-21	727	FNL	1947	FEL	40.39009	-104.55243	1.6	4608	NWNE

NOTE: THE ABANDONED WELL DATA SHOWN IN RED ABOVE WAS OBTAINED FROM COGCC SCOUT CARDS.

SHEET 2 OF 2

DATE: 1/13/2016
PROJECT#: 2013130