

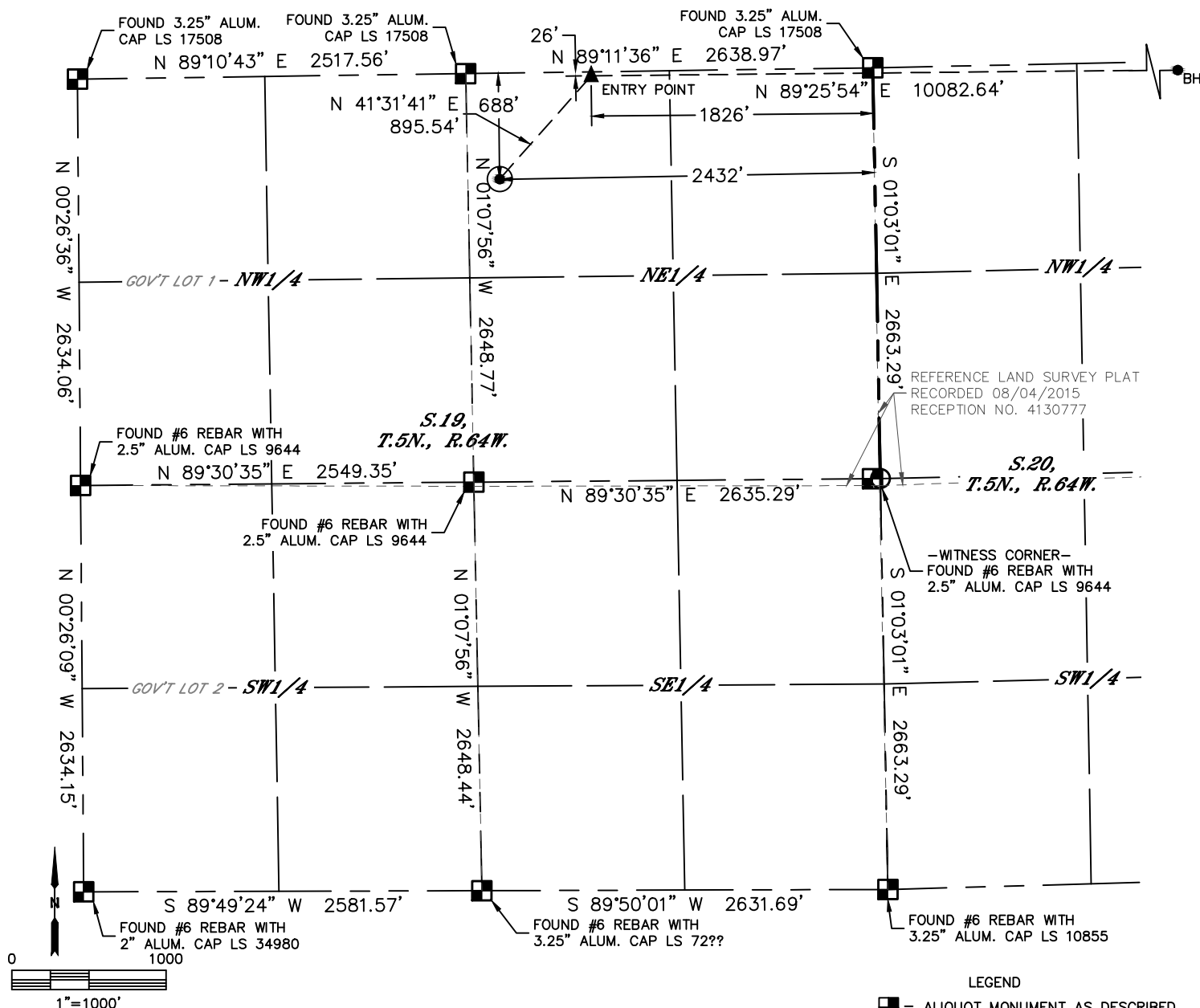


Lat40°, Inc. 6250 W. 10th Street, Unit 2 Greeley, CO 970-515-5294

WELL LOCATION CERTIFICATE

KLEIN 19M-402

SECTION: 19
TOWNSHIP: 5N
RANGE: 64W



CLIENT: PDC ENERGY						LANDMAN: AL BRAGG			
INSTRUMENT OPERATOR: BRIAN ROTTINGHAUS						SURVEY DATE: 11-26-2013		SURFACE USE: CROP LAND	
SHL FOOTAGE				SHL LAT °	SHL LONG °	SHL PDOP	SHL ELEV	SHL 1/4/1/4	SHL S-T-R
688	FNL	2432	FEL	40.38999	-104.59208	2.1	4628	NWNE	19-5-64

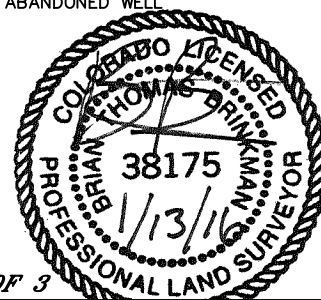
BHL FOOTAGE				BHL LAT °	BHL LONG °	BHL S-T-R	EP LAT °	EP LONG °	EP S-T-R
105	FNL	2306	FEL	40.39180	-104.55374	21-5-64	40.39181	-104.58993	19-5-64

NEAREST CULTURAL ITEMS	
BUILDING	±408' NW
BUILDING UNIT	±500' NW
HIGH OCCUPANCY BUILDING UNIT	5280' +
DESIGNATED OUTSIDE ACTIVITY AREA	5280' +
PUBLIC ROAD (HIGHWAY 34)	±691' N
ABOVE GROUND UTILITY	±200' W
RAILROAD	±3189' SE
PROPERTY LINE	±206' W

NOTE:

- 1) Bearings shown are Grid Bearings of the Colorado State Plane Coordinate System, North Zone, North American Datum 1983. The lineal dimensions as contained herein are based upon the "U.S. Survey Foot."
- 2) Distances to section lines measured at 90 degrees from said section lines.
- 3) Ground elevations are based on an observed GPS elevation (NAVD 1988 DATUM).
- 4) Latitude and Longitude shown are (NAD 83 DATUM).
- 5) IMPROVEMENTS: See LOCATION DRAWING for all visible improvements within 500' of oil and gas location.
- 6) This map does not represent a boundary survey.

- LEGEND
- = ALIQUOT MONUMENT AS DESCRIBED
 - = CALCULATED POSITION
 - = SURFACE HOLE LOCATION (SHL)
 - ▲ = ENTRY POINT LOCATION (EP)
 - BH = BOTTOM HOLE LOCATION (BHL)
 - ⊕ = EXISTING WELL
 - ⊖ = ABANDONED WELL



SHEET 1 OF 3

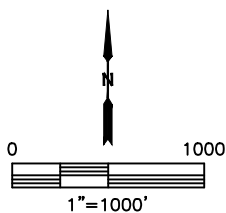
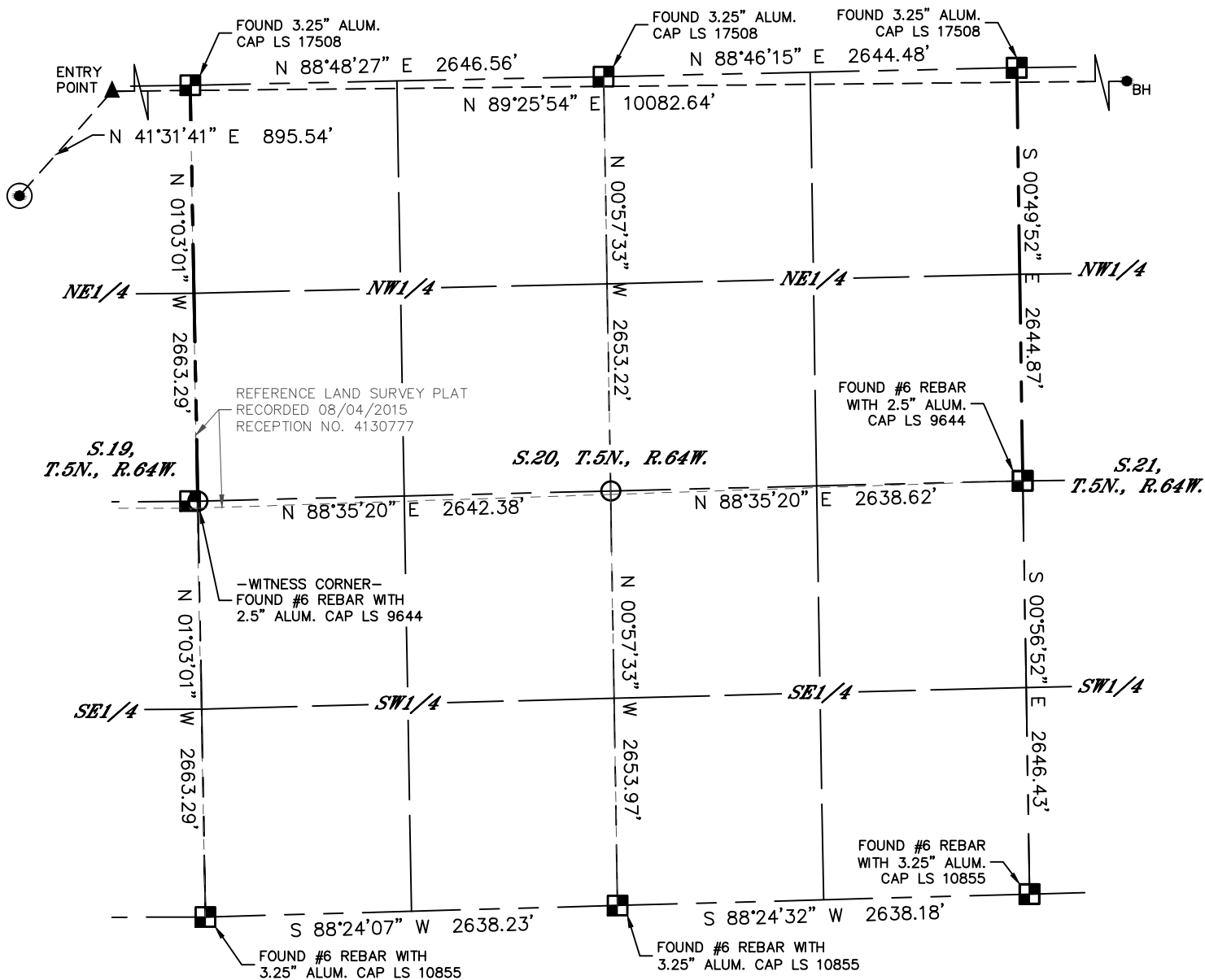
Brian T. Brinkman—On behalf of Lat40°, Inc.
Colorado Licensed Professional Land Surveyor No. 38175
DATE: 1/13/2016
PROJECT#: 2013130

Lat40°, Inc. 6250 W. 10th Street, Unit 2 Greeley, CO 970-515-5294








WELL LOCATION CERTIFICATE

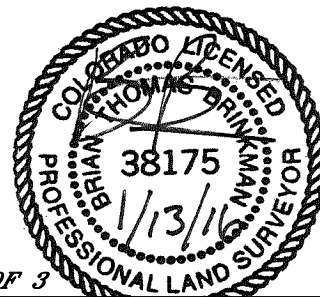
KLEIN 19M-402

SECTION: 19
TOWNSHIP: 5N
RANGE: 64W



LEGEND

-  = ALIQUOT MONUMENT AS DESCRIBED
 = CALCULATED POSITION
 = SURFACE HOLE LOCATION (SHL)
 = ENTRY POINT LOCATION (EP)
 = BOTTOM HOLE LOCATION (BHL)
 = EXISTING WELL
 = ABANDONED WELL



SHEET 2 OF 3

Brian T. Brinkman—On behalf of BCB, Inc.
Colorado Licensed Professional Land Surveyor No. 38175
DATE: 1/13/2016
PROJECT#: 2013130

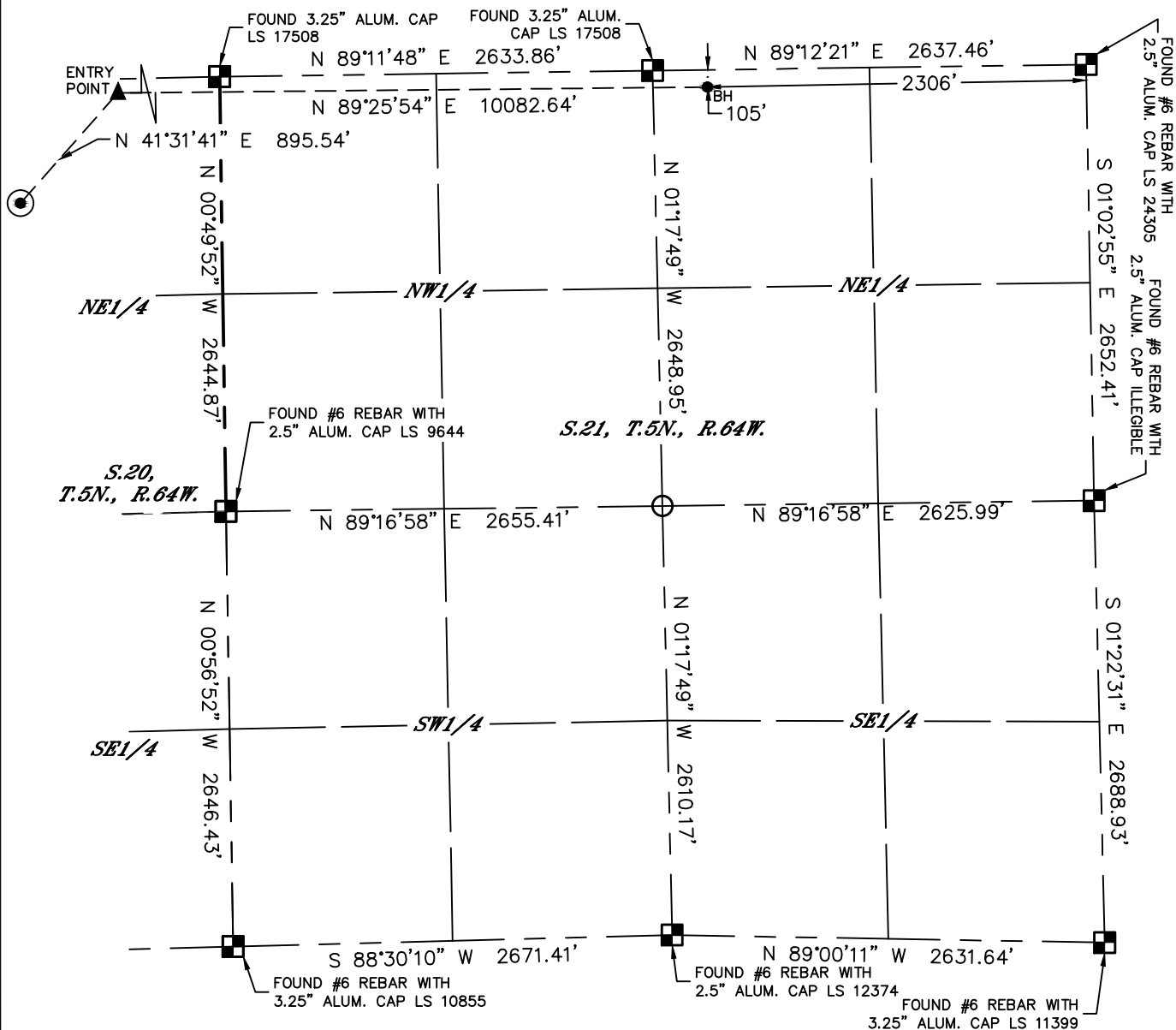


Lat40°, Inc. 6250 W. 10th Street, Unit 2 Greeley, CO 970-515-5294

WELL LOCATION CERTIFICATE

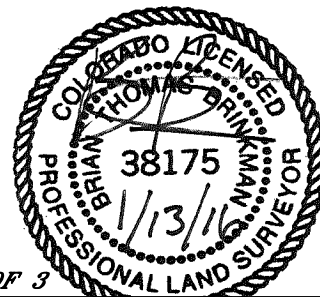
KLEIN 19M-402

SECTION: 19
TOWNSHIP: 5N
RANGE: 64W



LEGEND

- = ALIQUOT MONUMENT AS DESCRIBED
- = CALCULATED POSITION
- = SURFACE HOLE LOCATION (SHL)
- ▲ = ENTRY POINT LOCATION (EP)
- _{BH} = BOTTOM HOLE LOCATION (BHL)
- ⊙ = EXISTING WELL
- ⊙ = ABANDONED WELL



SHEET 3 OF 3

Brian T. Brinkman—On behalf of Lat40°, Inc.
Colorado Licensed Professional Land Surveyor No. 38175
DATE: 1/13/2016
PROJECT#: 2013130

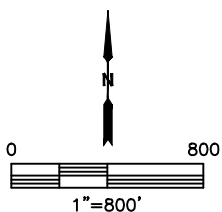
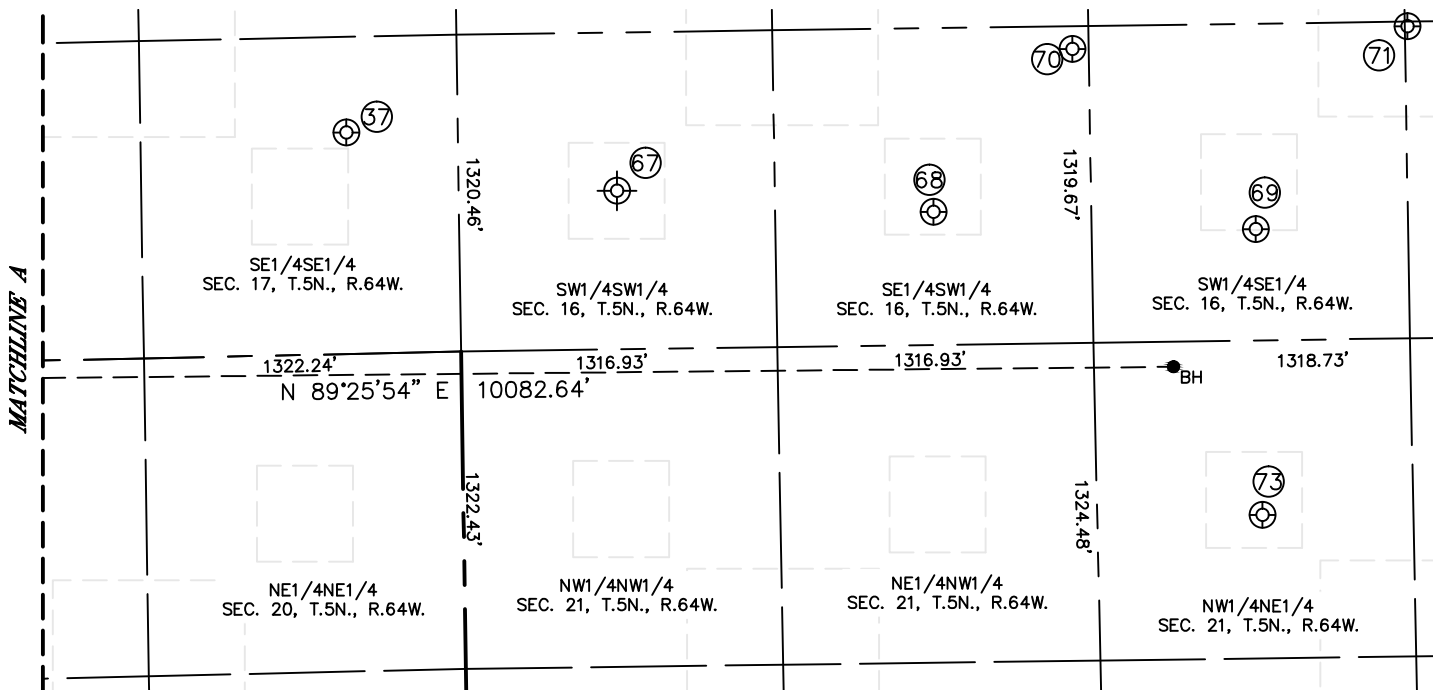
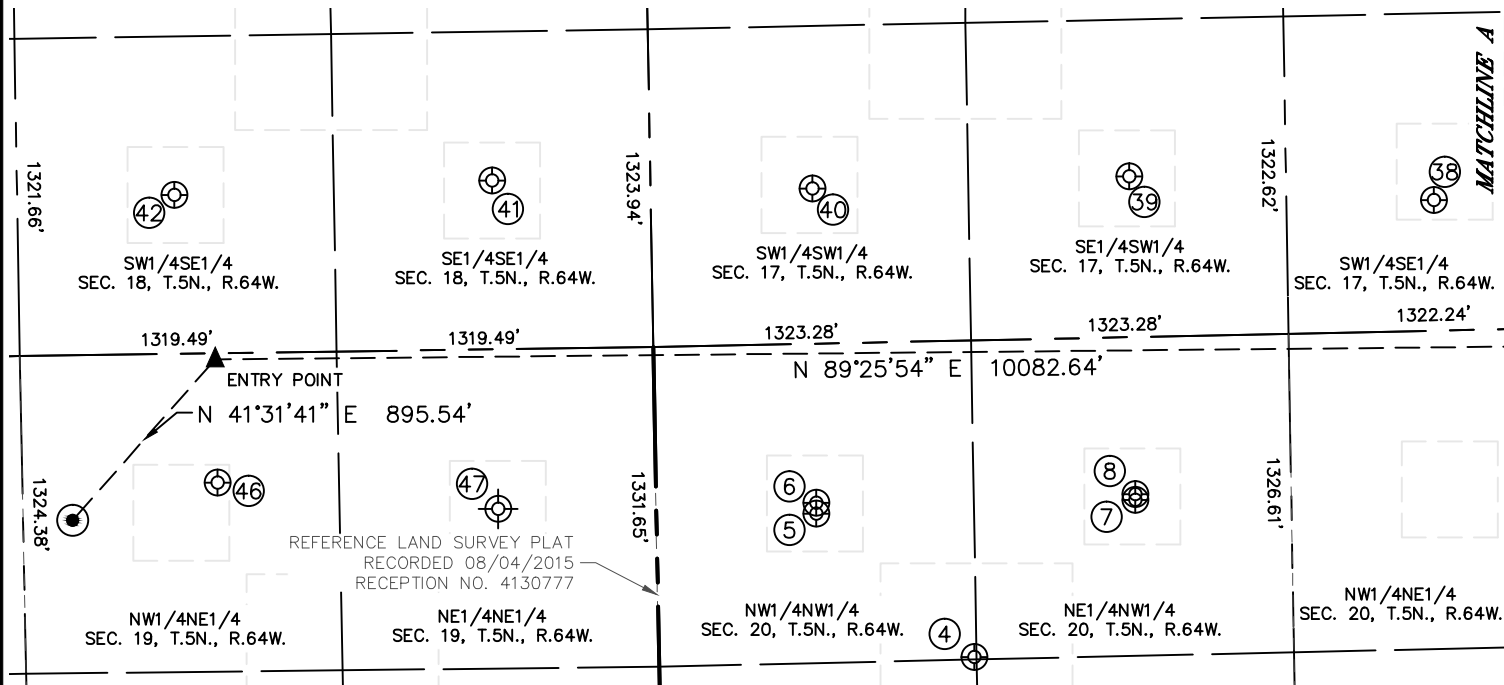


Lat40°, Inc. 6250 W. 10th Street, Unit 2 Greeley, CO 970-515-5294

SITE SKETCH

KLEIN 19M-402

SECTION: 19
TOWNSHIP: 5N
RANGE: 64W





Lat40°, Inc. 6250 W. 10th Street, Unit 2 Greeley, CO 970-515-5294

SITE SKETCH

KLEIN 19M-402

SECTION: 19
TOWNSHIP: 5N
RANGE: 64W

WELL NO.	WELL NAME	SHL FOOTAGE				SHL LAT°	SHL LONG°	PDOP	ELEV (FT.)	1/4/1/4
4	PIGEON 5-JAN	1319	FNL	1312	FWL	40.38832	-104.57863	2.1	4621	NWNW
5	PIGEON 1-6B	708	FNL	665	FWL	40.38998	-104.58097	2.1	4622	NWNW
6	PIGEON 1	528	FNL	666	FWL	40.39010	-104.58096	2.1	4622	NWNW
7	LUCILLE 1-6I	679	FNL	1995	FWL	40.39010	-104.57620	2.0	4619	NENW
8	LUCILLE 20-1	654	FNL	1995	FWL	40.39016	-104.57620	2.0	4620	NENW
37	SOLIS 44-17	922	FSL	465	FEL	40.39457	-104.56607	2.2	4618	SESE
38	HOSHIKO/SOLIS 1	544	FSL	2030	FEL	40.39349	-104.57168	2.1	4618	SWSE
39	MILLER 2	669	FSL	1995	FWL	40.39380	-104.57623	2.0	4622	SESW
40	MILLER 1	647	FSL	674	FWL	40.39370	-104.58097	3.3	4624	SWSW
41	HETTINGER 44-18	702	FSL	659	FEL	40.39382	-104.58576	2.0	4625	SESE
42	HETTINGER 34-18	661	FSL	1984	FEL	40.39370	-104.59051	2.1	4627	SWSE
46	SETH 1	540	FNL	1825	FEL	40.39040	-104.58991	1.9	4627	NWNE
47	PAIGE 1	665	FNL	659	FEL	40.39011	104.58570	N/A	4615	NENE
67	PATRIOT B 16-13	660	FSL	660	FWL	40.39366	-104.56224	N/A	4613	SWSW
68	PATRIOT B 16-14	555	FSL	1976	FWL	40.39360	-104.55730	1.6	4613	SESW
69	PATRIOT B 16-15	464	FSL	1953	FEL	40.39336	-104.55248	1.6	4610	SWSE
70	PATRIOT B 16-24	1224	FSL	2565	FWL	40.39544	-104.55520	1.6	4612	SESW
71	PATRIOT B 16-23	1300	FSL	1307	FEL	40.39566	-104.55019	1.6	4611	SWSE
73	PLATTE VALLEY 2-21	727	FNL	1947	FEL	40.39009	-104.55243	1.6	4608	NWNE

NOTE: THE ABANDONED WELL DATA SHOWN IN RED ABOVE WAS OBTAINED FROM COGCC SCOUT CARDS.

SHEET 2 OF 2

DATE: 1/13/2016
PROJECT#: 2013130