

1625 Broadway
Suite 2000
Denver, CO 80202

Tel: 303.228.4000
Fax: 303.228.4280
www.nobleenergyinc.com



January 7, 2016

Colorado Oil and Gas Conservation Commission
The Chancery Building
1120 Lincoln Street, Suite 801
Denver, CO 80203
Attn: Mr. Matt Lepore, Director

RE: Lapp A15-613, Doc # 400921772
Section 13: SW/4SW/4 Township 6 North, Range 64 West, 6th P.M.
Weld County, Colorado

Dear Director:

Noble Energy, Inc. ("NEI") is planning to drill the captioned boundary well in accordance with the provisions of COGCC Rule 318A.e.

NEI's proposed wellbore spacing unit consists of the SWSW Sec. 13, S/2S/2 Sec. 14, S/2S/2 Sec. 15, N/2N/2 Sec. 22, N/2N/2 Sec. 23 NW/NW Sec. 24, T6N, R64W, creating a 716-acre wellbore spacing unit for the Codell formation. NEI is not the only owner within the proposed wellbore spacing unit and as such provided notice to the remaining owner(s) within said proposed spacing unit as required under COGCC Rule 318A.e.(5). Copies of the required notice letter(s) is/are on file at the NEI offices. The required thirty (30) day notice period has elapsed absent the receipt by NEI of an objection to said proposal by the owner(s) within the proposed spacing unit for this well.

Enclosed are copies of the following documents to assist you in your review and approval of NEI's proposed APD for the captioned well:

- Map & plat illustrating proposed wellbore spacing unit.

Thank you for your attention to the enclosed. NEI respectfully requests that the COGCC review the enclosed information and approve the Application for Permit to Drill the captioned well.

Sincerely,

Jan Kajiwar

Jan Kajiwar
Regulatory Analyst III
Noble Energy Inc.

Lapp A15-613

Proposed Spacing Unit – Noble Energy, Inc

SW/4SW/4 Section 13, Township 6 North, Range 64 West

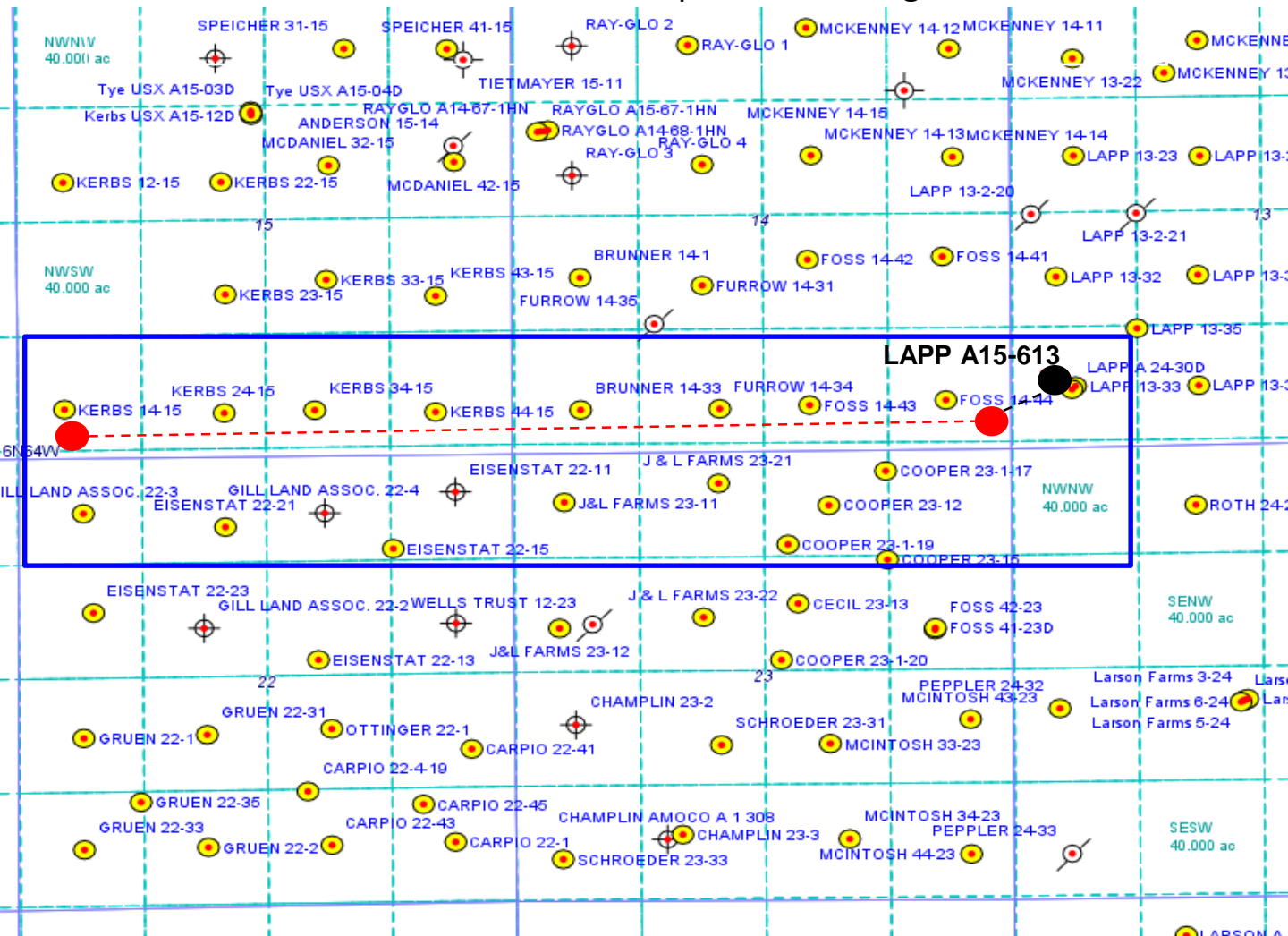
S/2S/2 Section 14, Township 6 North, Range 64 West

S/2S/2 Section 15, Township 6 North, Range 64 West

N/2N/2 Section 22, Township 6 North, Range 64 West

N/2N/2 Section 23, Township 6 North, Range 64 West

NW/4NW/4 Section 24, Township 6 North, Range 64 West



Legend



Proposed 716.67± acre spacing unit



Bottom Hole Location

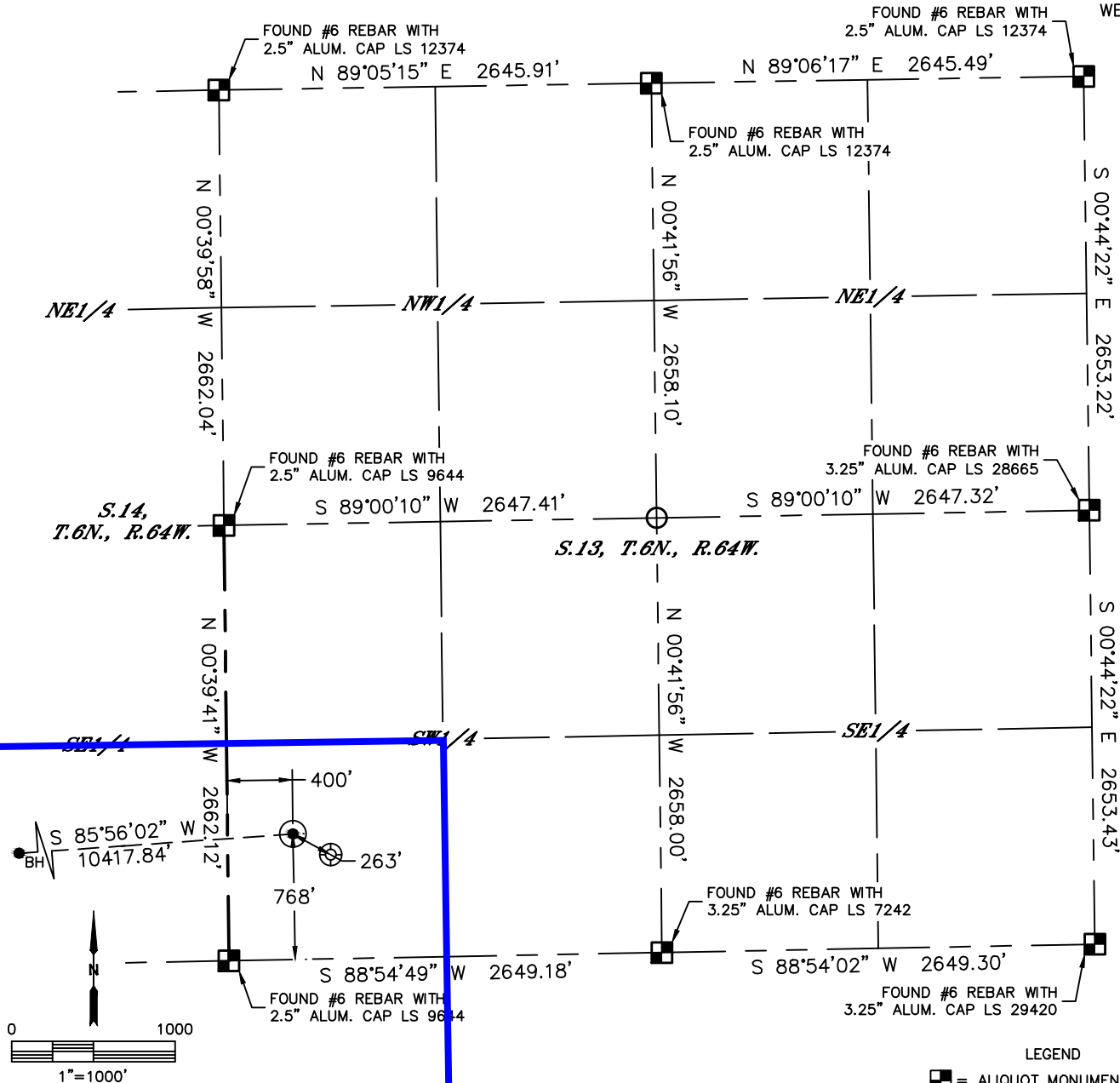


Lat40°, Inc. 6250 W. 10th Street, Unit 2, Greeley, CO 970-515-5294

WELL LOCATION CERTIFICATE

LAPP A15-613

SECTION: 13
TOWNSHIP: 6N
RANGE: 64W
6TH. P.M.
WELD COUNTY, CO



CLIENT: NOBLE ENERGY, INC.						ANDMAN: NATE MCCORKELL			
INSTRUMENT OPERATOR: CASEY KOHOUT						URVEY DATE: 7/22/2015		SURFACE USE: PASTURE	
SHL FOOTAGE			SHL LAT°		SHL LONG °	SHL PDOP	SHL ELEV	SHL 1/4/1/4	SHL S-T-R
768	FSL	400	FWL	40.48104	-104.50639	1.5	4665	SWSW	13-6-64

BHL FOOTAGE				BHL LAT°	BHL LONG °	BHL S-T-R
225	FSL	535	FWL	40.47933	-104.54376	15-6-64

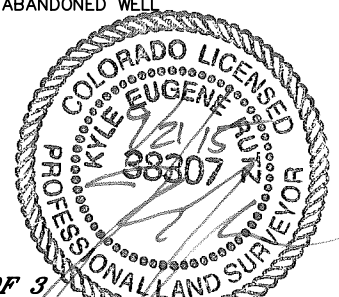
NEAREST EXISTING WELL IN SHL 1/4/1/4	
EX. LAPP A24-30D	±263' SE
NEAREST CULTURAL ITEMS	
BUILDING	±827' SW
BUILDING UNIT	±910' SW
HIGH OCCUPANCY BUILDING UNIT	5280' +
DESIGNATED OUTSIDE ACTIVITY AREA	5280' +
PUBLIC ROAD (COUNTY ROAD 59)	±391' W
ABOVE GROUND UTILITY	±796' S
RAILROAD	5280' +
PROPERTY LINE	±400' W

NOTE:

- 1) Bearings shown are Grid Bearings of the Colorado State Plane Coordinate System, North Zone, North American Datum 1983. The lineal dimensions as contained herein are based upon the "U.S. Survey Foot."
- 2) Distances to section lines measured at 90 degrees from said section lines.
- 3) Ground elevations are based on an observed GPS elevation (NAVD 1988 DATUM).
- 4) Latitude and Longitude shown are (NAD 83 DATUM).
- 5) IMPROVEMENTS: See LOCATION DRAWING for all visible improvements within 500' of oil and gas location.
- 6) This map does not represent a boundary survey.

LEGEND

- = ALIQUOT MONUMENT AS DESCRIBED
- = CALCULATED POSITION
- = SURFACE HOLE LOCATION (SHL)
- ▲ = ENTRY POINT LOCATION (EP)
- BH = BOTTOM HOLE LOCATION (BHL)
- ⊕ = EXISTING WELL
- ⊙ = ABANDONED WELL



SHEET 1 OF 3

Kyle E. Rutz—On behalf of Lat40°, Inc.
Colorado Licensed Professional Land Surveyor No. 38307
DATE: 9/21/2015
PROJECT#: 2015052

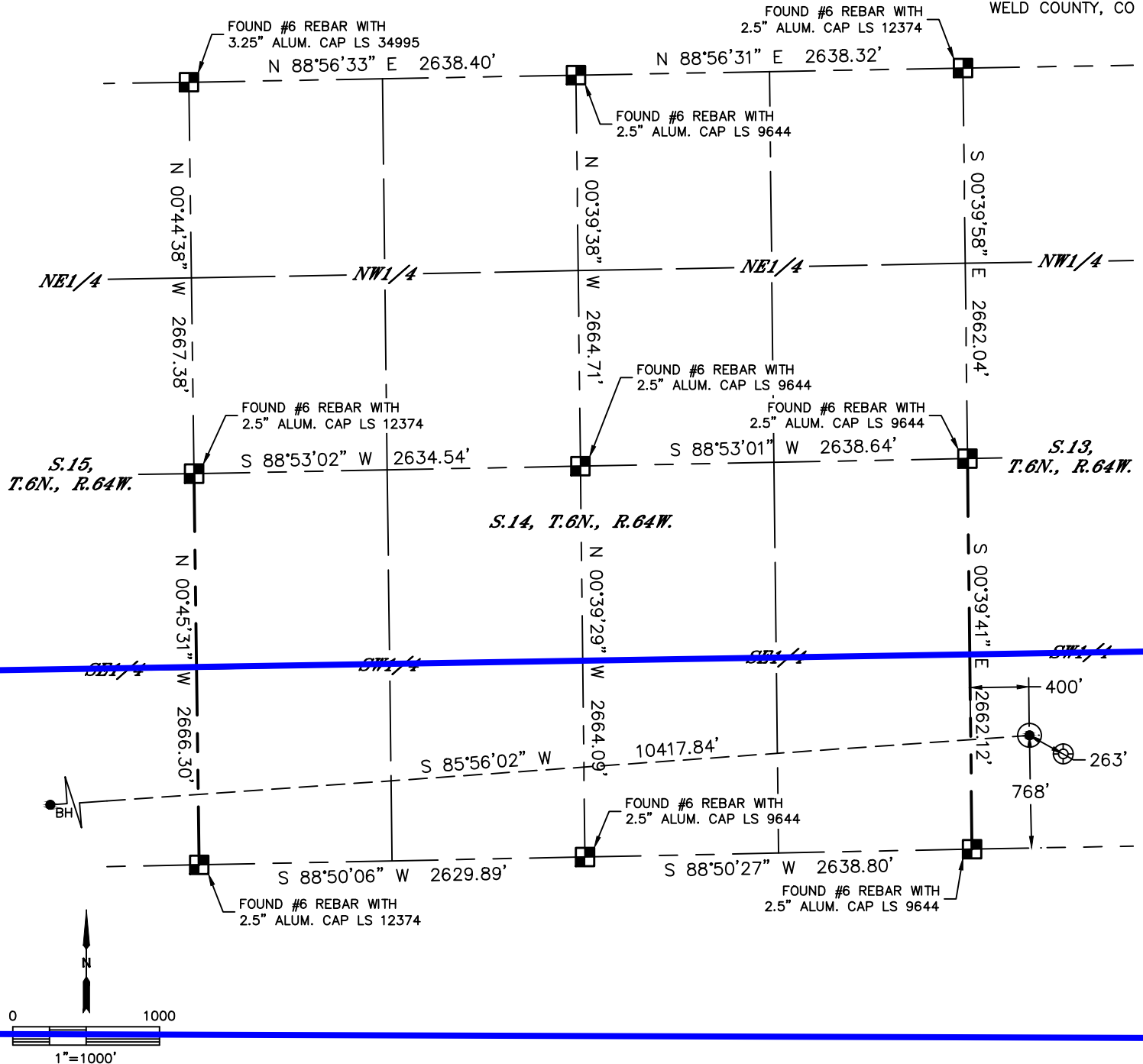


Lat40°, Inc. 6250 W. 10th Street, Unit 2, Greeley, CO 970-515-5294

WELL LOCATION CERTIFICATE

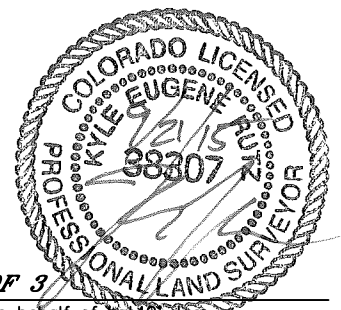
LAPP A15-613

SECTION: 13
TOWNSHIP: 6N
RANGE: 64W
6TH. P.M.
WELD COUNTY, CO



LEGEND

- = ALIQUOT MONUMENT AS DESCRIBED
- = CALCULATED POSITION
- = SURFACE HOLE LOCATION (SHL)
- = ENTRY POINT LOCATION (EP)
- = BOTTOM HOLE LOCATION (BHL)
- = EXISTING WELL
- = ABANDONED WELL



SHEET 2 OF 3

Kyle E. Rutz—On behalf of Lat40°, Inc.
Colorado Licensed Professional Land Surveyor No. 38307
DATE: 9/21/2015
PROJECT#: 2015052

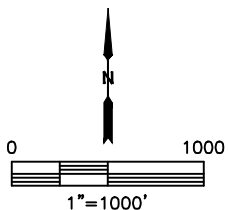
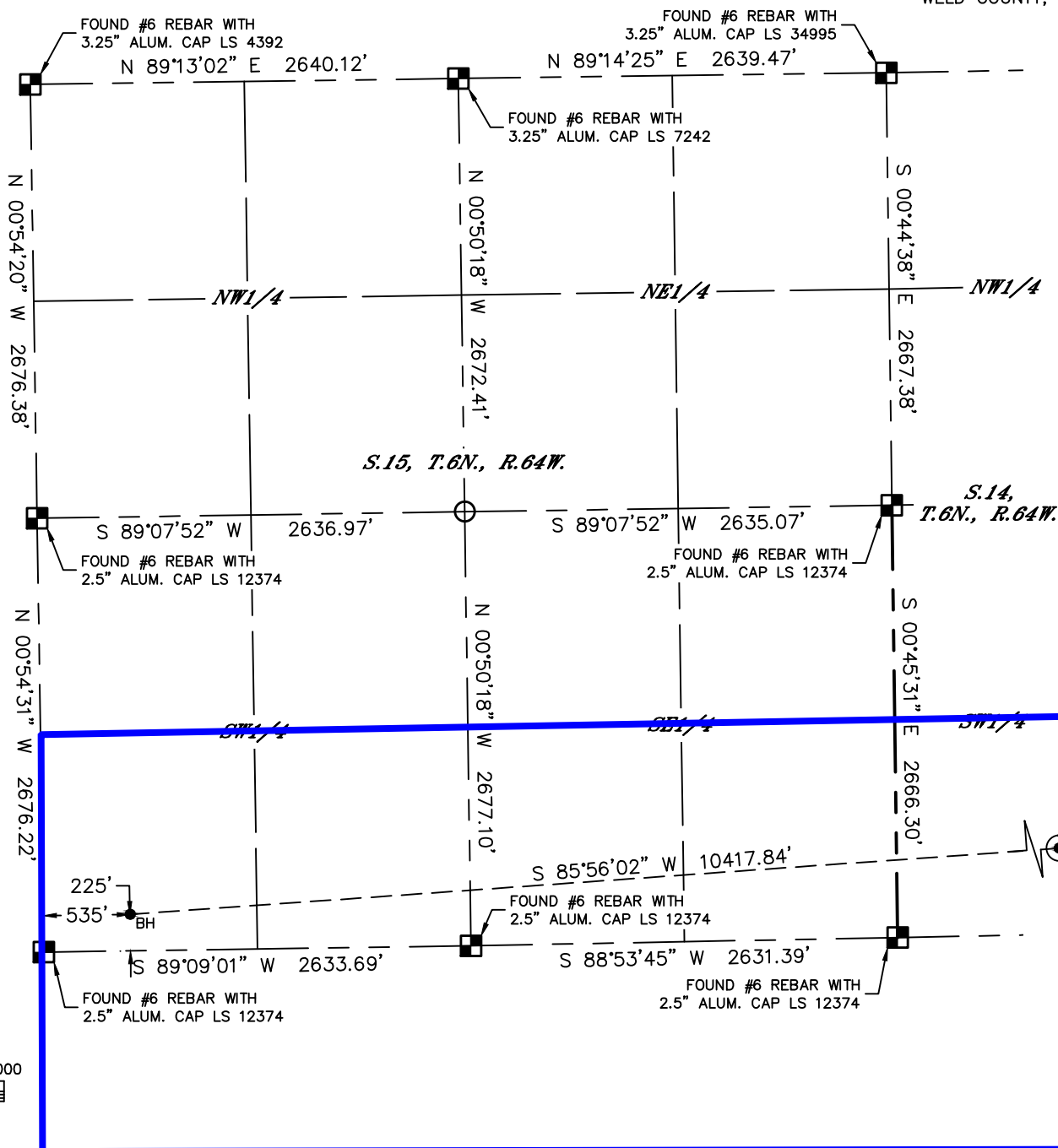


Lat40°, Inc. 6250 W. 10th Street, Unit 2, Greeley, CO 970-515-5294

WELL LOCATION CERTIFICATE

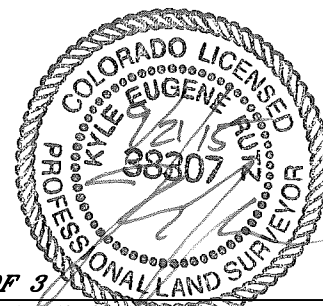
LAPP A15-613

SECTION: 13
TOWNSHIP: 6N
RANGE: 64W
6TH. P.M.
WELD COUNTY, CO



LEGEND

- = ALIQUOT MONUMENT AS DESCRIBED
- = CALCULATED POSITION
- = SURFACE HOLE LOCATION (SHL)
- = ENTRY POINT LOCATION (EP)
- = BOTTOM HOLE LOCATION (BHL)
- = EXISTING WELL
- = ABANDONED WELL



SHEET 3 OF 3

Kyle E. Rutz—On behalf of Lat40°, Inc.
Colorado Licensed Professional Land Surveyor No. 38307
DATE: 9/21/2015
PROJECT#: 2015052