

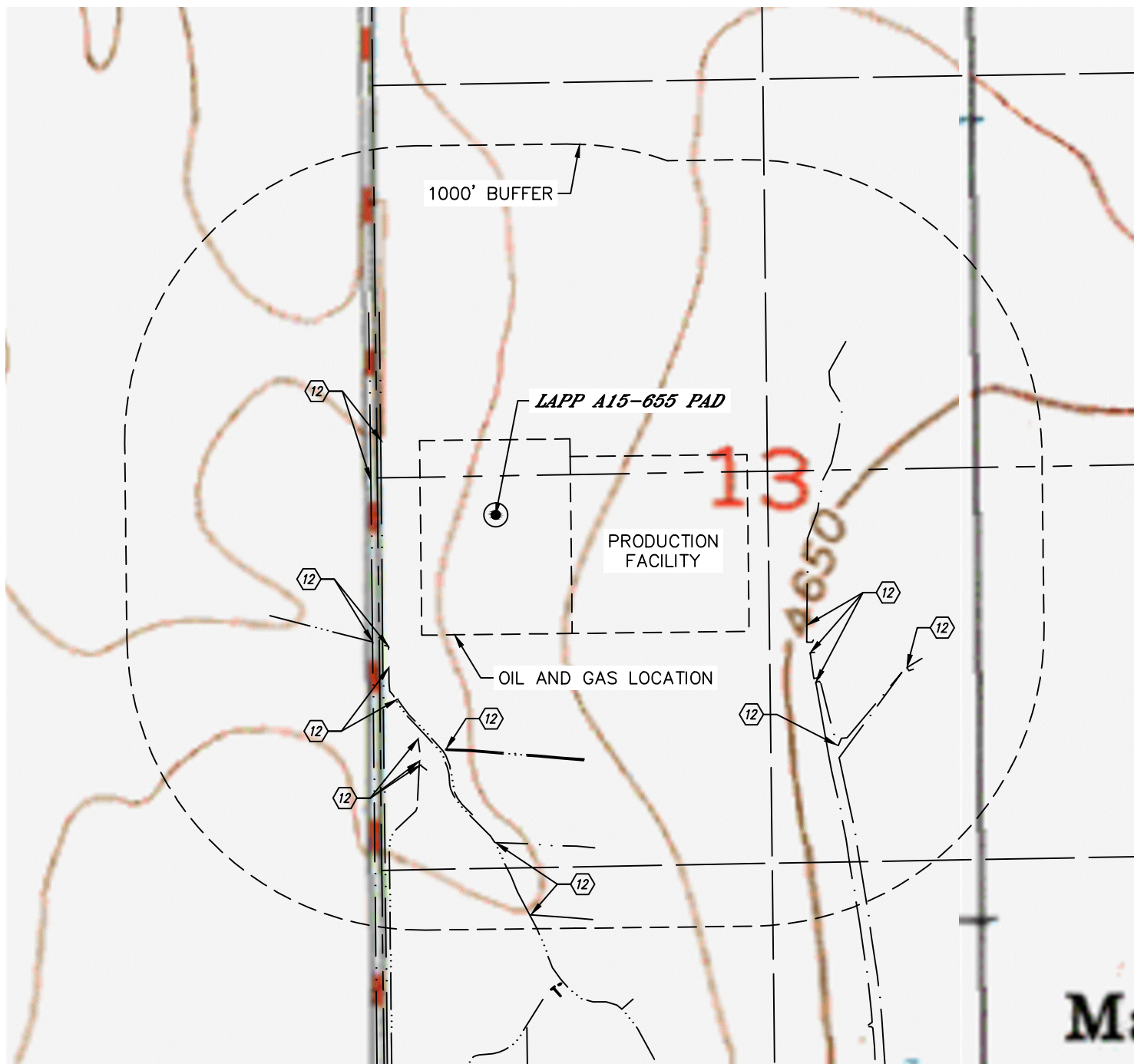


Lat40°, Inc. 6250 W. 10th Street, Unit 2, Greeley, CO 970-515-5294

HYDROLOGY MAP

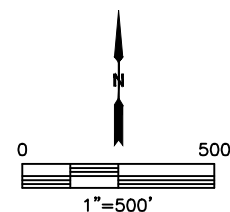
LAPP A15-655 PAD

SECTION: 13
TOWNSHIP: 6N
RANGE: 64W
6TH. P.M.
WELD COUNTY, CO



DISTANCES MEASURED FROM EDGE OF OIL AND GAS LOCATION.

⑫ DITCH 119', 157', 168' & 232' SW, 132' 167' W, 195' E, 220', 285',
485' & 549' SE, 325', 387', 426', 440', 707' & 953' S



DATE: 9/21/2015
PROJECT#: 2015052