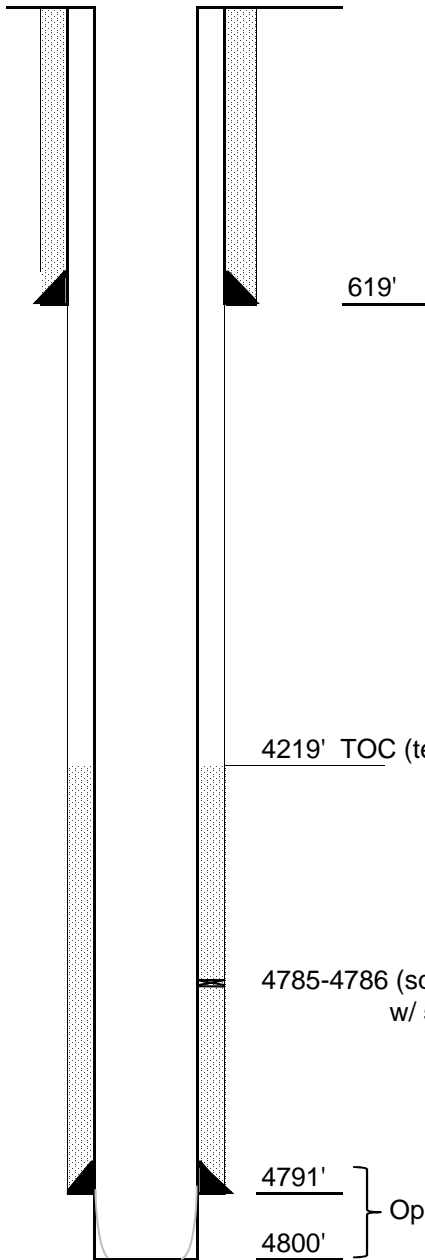


# APPLICATION FOR DISPOSAL WELL

## CURRENT WELLBORE DIAGRAM

LEASE Brewer 'A' NE SE Sec 15 , T 8N , R 53W WELL NO. 2 Logan API: **05-** 075-05797 County, Colorado



### SURFACE CASING

8-5/8" Surface CSG @ 619 '  
with 185 sx  
TOP OF CEMENT @ Circulated to Surface

### PRODUCTION CASING

5-1/2" 15.5 # Production CSG @ 4,791 '  
with 75 sx

TD: 4,800 '  
PBTD: 4,800 '