

BONANZA CREEK OIL COMPANY

Location: COLORADO Slot: SLOT#02 NORTH PLATTE Y44-U41-13HNB (639°FSL & 442°FEL, SEC.13)
Field: WELD COUNTY Well: NORTH PLATTE Y44-U41-13HNB
Facility: SEC.13-T05N-R63W Wellbore: NORTH PLATTE Y44-U41-13HNB PWB

Plot reference wellpath is NORTH PLATTE Y44-U41-13HNB PWP (REV-A.0)

True vertical depths are referenced to XTREME 22 (17KB) (RKB)	Grid System: NAD83 / Lambert Colorado SP, Northern Zone (501), US feet
Measured depths are referenced to XTREME 22 (17KB) (RKB)	North Reference: True north
XTREME 22 (17KB) (RKB) to Mean Sea Level: 4614 feet	Scale: True distance
Mean Sea Level to Mud line (At Slot: SLOT#02 NORTH PLATTE Y44-U41-13HNB (639°FSL & 442°FEL, SEC.13)): 0 feet	Depths are in feet
Coordinates are in feet referenced to Slot	Created by: ingmjmr on 1/11/2016

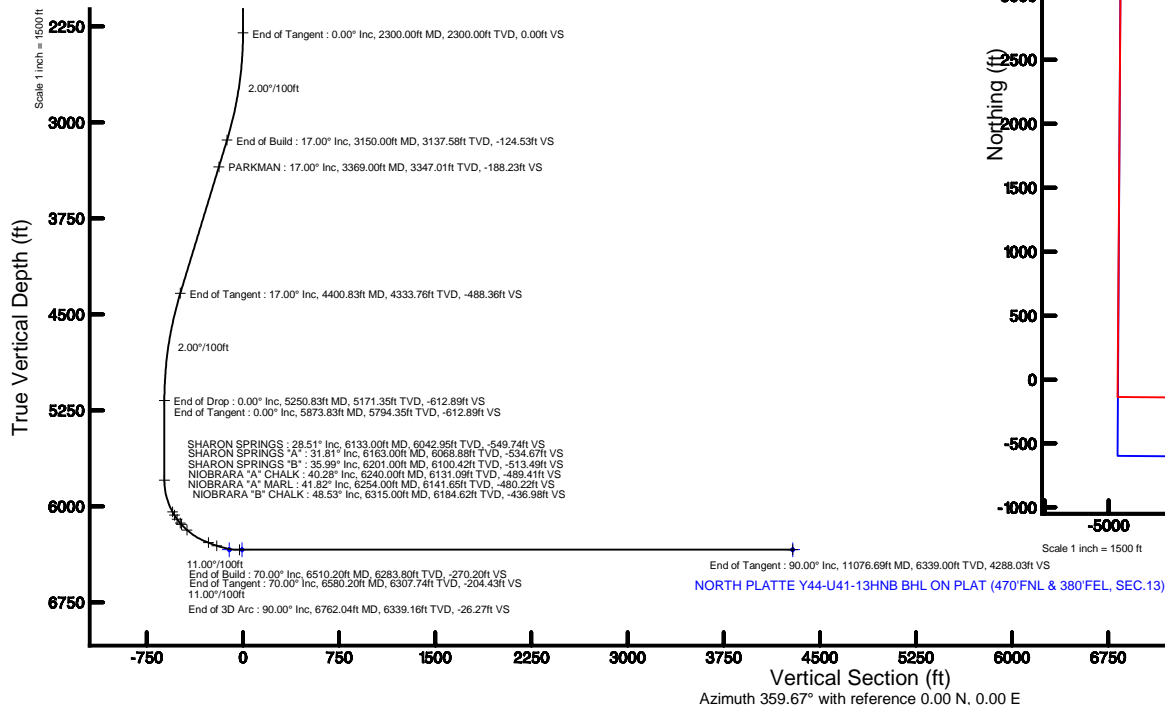
Location Information

Facility Name		Grid East (US ft)	Grid North (US ft)	Latitude	Longitude
SEC.13-T05N-R63W		3312874.958	1386185.127	40°23'36.708"N	104°22'36.084"W
Slot	Local N (ft)	Local E (ft)	Grid East (US ft)	Grid North (US ft)	Latitude
SLOT#02 NORTH PLATTE Y44-U41-13HNB (639°FSL & 442°FEL, SEC.13)	21.86	6.00	3312874.681	1386206.983	40°23'36.524"N
XTREME 22 (17KB) (RKB) to Mud line (At Slot: SLOT#02 NORTH PLATTE Y44-U41-13HNB (639°FSL & 442°FEL, SEC.13))		4614ft			
Mean Sea Level to Mud line (At Slot: SLOT#02 NORTH PLATTE Y44-U41-13HNB (639°FSL & 442°FEL, SEC.13))		0ft			
XTREME 22 (17KB) (RKB) to Mean Sea Level		4614ft			



BGGM (1945.0 to 2017.0) Dip: 67.02° Field: 52615.7 nT
Magnetic North is 8.28 degrees East of True North (at 1/8/2016)

To correct azimuth from Magnetic to True add 8.28 degrees



Well Profile Data

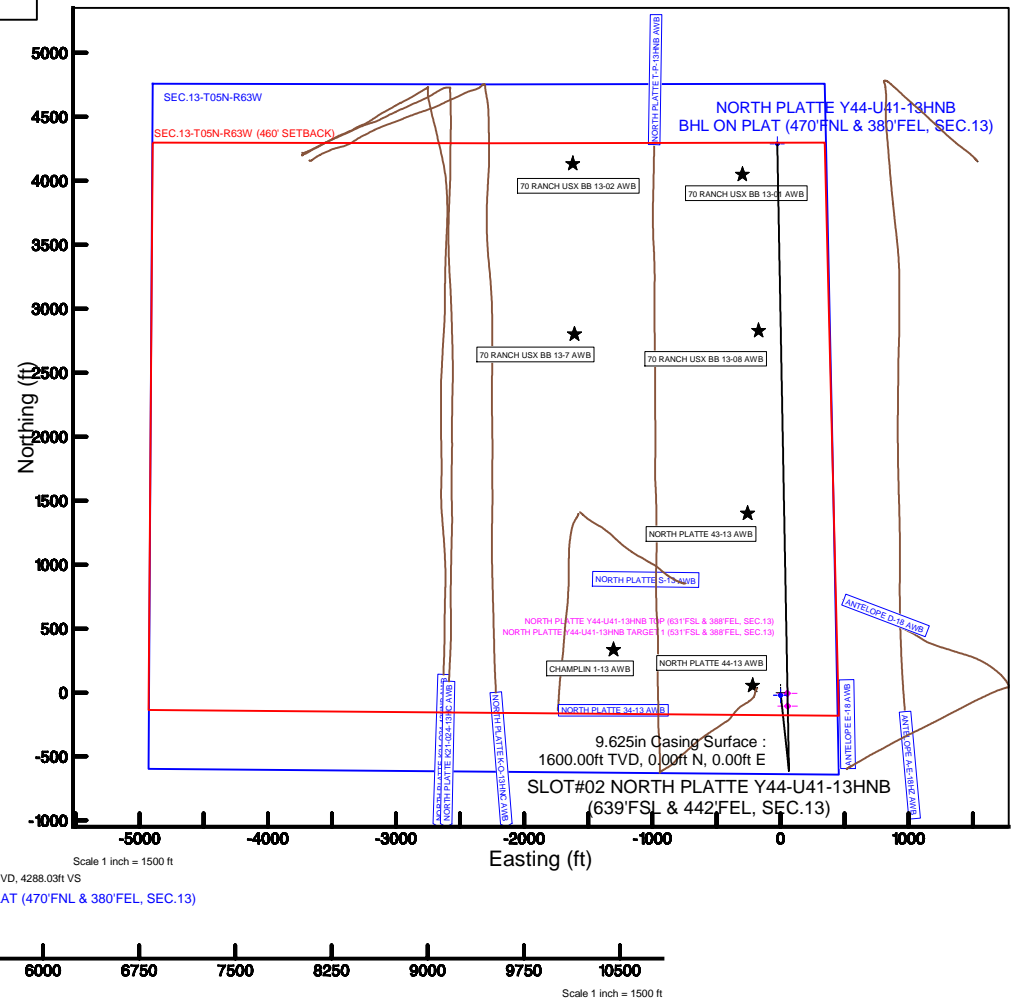
Design Comment	MD (ft)	Inc (°)	Az (°)	TVD (ft)	Local N (ft)	Local E (ft)	DLS (°/100ft)	VS (ft)
Tie On	17.00	0.000	173.850	17.00	0.00	0.00	0.00	0.00
End of Tangent	2300.00	0.000	173.850	2300.00	0.00	0.00	0.00	0.00
End of Build	3150.00	17.000	173.850	3137.58	-124.46	13.41	2.00	-124.53
End of Tangent	4400.83	17.000	173.850	4333.76	-488.06	52.59	0.00	-488.36
End of Drop	5250.83	0.000	358.935	5171.35	-612.52	66.00	2.00	-612.89
End of Tangent	5873.83	0.000	358.935	5794.35	-612.52	66.00	0.00	-612.89
End of Build	6510.20	70.000	358.935	6283.80	-269.86	59.63	11.00	-270.20
End of Tangent	6580.20	70.000	358.935	6307.74	-204.09	58.41	0.00	-204.43
End of 3D Arc	6762.04	90.002	358.935	6339.16	-25.95	55.10	11.00	-26.27
End of Tangent	11076.69	90.002	358.935	6339.00	4287.95	-25.07	0.00	4288.03

Survey Program

Start MD (ft)	End MD (ft)	Tool	Model	Log Name/Comment	Wellbore
17.00	11076.69	NaviTrak	Custom NaviTrak (MagCorr) (Rockies 0.03Gt model)		NORTH PLATTE Y44-U41-13HNB PWB

Bottom Hole Location

MD (ft)	Inc (°)	Az (°)	TVD (ft)	Local N (ft)	Local E (ft)	Grid East (US ft)	Grid North (US ft)	Latitude	Longitude
11076.69	90.002	358.935	6339.00	4287.95	-25.07	3312795.30	1392494.10	40°24'19.296"N	104°22'36.408"W





Planned Wellpath Report

NORTH PLATTE Y44-U41-13HNB PWP (REV-A.0)
Page 1 of 6



REFERENCE WELLPATH IDENTIFICATION

Operator	BONANZA CREEK OIL COMPANY	Slot	SLOT#02 NORTH PLATTE Y44-U41-13HNB (639'FSL & 442'FEL, SEC.13)
Area	COLORADO	Well	NORTH PLATTE Y44-U41-13HNB
Field	WELD COUNTY	Wellbore	NORTH PLATTE Y44-U41-13HNB PWB
Facility	SEC.13-T05N-R63W		

REPORT SETUP INFORMATION

Projection System	NAD83 / Lambert Colorado SP, Northern Zone (501), US feet	Software System	WellArchitect® 4.1.1
North Reference	True	User	Ingmjmr
Scale	0.99996	Report Generated	1/11/2016 at 1:56:12 PM
Convergence at slot	0.73° East	Database/Source file	WA_DEN_Denver_Defn/NORTH_PLATTE_Y44-U41-13HNB_PWB.xml

WELLPATH LOCATION

	Local coordinates		Grid coordinates		Geographic coordinates	
	North[ft]	East[ft]	Easting[US ft]	Northing[US ft]	Latitude	Longitude
Slot Location	21.86	0.00	3312874.68	1388206.98	40°23'36.924"N	104°22'36.084"W
Facility Reference Pt			3312874.96	1388185.13	40°23'36.708"N	104°22'36.084"W
Field Reference Pt			3335925.10	1457282.25	40°34'56.460"N	104°17'26.016"W

WELLPATH DATUM

Calculation method	Minimum curvature	XTREME 22 (17'KB) (RKB) to Facility Vertical Datum	4614.00ft
Horizontal Reference Pt	Slot	XTREME 22 (17'KB) (RKB) to Mean Sea Level	4614.00ft
Vertical Reference Pt	XTREME 22 (17'KB) (RKB)	XTREME 22 (17'KB) (RKB) to Mud Line at Slot (SLOT#02 NORTH PLATTE Y44-U41-13HNB (639'FSL & 442'FEL, SEC.13))	4614.00ft
MD Reference Pt	XTREME 22 (17'KB) (RKB)	Section Origin	N 0.00, E 0.00 ft
Field Vertical Reference	Mean Sea Level	Section Azimuth	359.67°



Planned Wellpath Report

NORTH PLATTE Y44-U41-13HNB PWP (REV-A.0)
Page 2 of 6



REFERENCE WELLPATH IDENTIFICATION

Operator	BONANZA CREEK OIL COMPANY	Slot	SLOT#02 NORTH PLATTE Y44-U41-13HNB (639'FSL & 442'FEL, SEC.13)
Area	COLORADO	Well	NORTH PLATTE Y44-U41-13HNB
Field	WELD COUNTY	Wellbore	NORTH PLATTE Y44-U41-13HNB PWB
Facility	SEC.13-T05N-R63W		

WELLPATH DATA (128 stations) † = interpolated/extrapolated station

MD [ft]	Inclination [°]	Azimuth [°]	TVD [ft]	Vert Sect [ft]	North [ft]	East [ft]	DLS [°/100ft]	Comments
0.00†	0.000	173.850	0.00	0.00	0.00	0.00	0.00	
17.00	0.000	173.850	17.00	0.00	0.00	0.00	0.00	Tie On
117.00†	0.000	173.850	117.00	0.00	0.00	0.00	0.00	
217.00†	0.000	173.850	217.00	0.00	0.00	0.00	0.00	
317.00†	0.000	173.850	317.00	0.00	0.00	0.00	0.00	
417.00†	0.000	173.850	417.00	0.00	0.00	0.00	0.00	
517.00†	0.000	173.850	517.00	0.00	0.00	0.00	0.00	
617.00†	0.000	173.850	617.00	0.00	0.00	0.00	0.00	
717.00†	0.000	173.850	717.00	0.00	0.00	0.00	0.00	
817.00†	0.000	173.850	817.00	0.00	0.00	0.00	0.00	
917.00†	0.000	173.850	917.00	0.00	0.00	0.00	0.00	
1017.00†	0.000	173.850	1017.00	0.00	0.00	0.00	0.00	
1117.00†	0.000	173.850	1117.00	0.00	0.00	0.00	0.00	
1217.00†	0.000	173.850	1217.00	0.00	0.00	0.00	0.00	
1317.00†	0.000	173.850	1317.00	0.00	0.00	0.00	0.00	
1417.00†	0.000	173.850	1417.00	0.00	0.00	0.00	0.00	
1517.00†	0.000	173.850	1517.00	0.00	0.00	0.00	0.00	
1617.00†	0.000	173.850	1617.00	0.00	0.00	0.00	0.00	
1717.00†	0.000	173.850	1717.00	0.00	0.00	0.00	0.00	
1817.00†	0.000	173.850	1817.00	0.00	0.00	0.00	0.00	
1917.00†	0.000	173.850	1917.00	0.00	0.00	0.00	0.00	
2017.00†	0.000	173.850	2017.00	0.00	0.00	0.00	0.00	
2117.00†	0.000	173.850	2117.00	0.00	0.00	0.00	0.00	
2200.00	0.000	173.850	2200.00	0.00	0.00	0.00	0.00	End of Tangent
2217.00†	0.340	173.850	2217.00	-0.05	-0.05	0.01	2.00	
2317.00†	2.340	173.850	2316.97	-2.38	-2.38	0.26	2.00	
2417.00†	4.340	173.850	2416.79	-8.17	-8.17	0.88	2.00	
2517.00†	6.340	173.850	2516.35	-17.43	-17.42	1.88	2.00	
2617.00†	8.340	173.850	2615.53	-30.14	-30.12	3.25	2.00	
2717.00†	10.340	173.850	2714.20	-46.28	-46.26	4.98	2.00	
2817.00†	12.340	173.850	2812.24	-65.85	-65.81	7.09	2.00	
2917.00†	14.340	173.850	2909.54	-88.80	-88.74	9.56	2.00	
3017.00†	16.340	173.850	3005.97	-115.12	-115.05	12.40	2.00	
3050.00	17.000	173.850	3037.58	-124.53	-124.46	13.41	2.00	End of Build
3117.00†	17.000	173.850	3101.66	-144.02	-143.93	15.51	0.00	
3217.00†	17.000	173.850	3197.29	-173.11	-173.00	18.64	0.00	
3317.00†	17.000	173.850	3292.92	-202.20	-202.07	21.77	0.00	
3369.00†	17.000	173.850	3342.64	-217.32	-217.19	23.40	0.00	PARKMAN
3417.00†	17.000	173.850	3388.55	-231.28	-231.14	24.91	0.00	
3517.00†	17.000	173.850	3484.18	-260.37	-260.21	28.04	0.00	
3617.00†	17.000	173.850	3579.81	-289.46	-289.28	31.17	0.00	
3717.00†	17.000	173.850	3675.44	-318.54	-318.35	34.30	0.00	
3817.00†	17.000	173.850	3771.07	-347.63	-347.42	37.43	0.00	
3917.00†	17.000	173.850	3866.70	-376.72	-376.48	40.57	0.00	
4017.00†	17.000	173.850	3962.33	-405.80	-405.55	43.70	0.00	



Planned Wellpath Report

NORTH PLATTE Y44-U41-13HNB PWP (REV-A.0)
Page 3 of 6

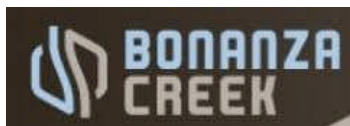


REFERENCE WELLPATH IDENTIFICATION

Operator	BONANZA CREEK OIL COMPANY	Slot	SLOT#02 NORTH PLATTE Y44-U41-13HNB (639'FSL & 442'FEL, SEC.13)
Area	COLORADO	Well	NORTH PLATTE Y44-U41-13HNB
Field	WELD COUNTY	Wellbore	NORTH PLATTE Y44-U41-13HNB PWB
Facility	SEC.13-T05N-R63W		

WELLPATH DATA (128 stations) † = interpolated/extrapolated station

MD [ft]	Inclination [°]	Azimuth [°]	TVD [ft]	Vert Sect [ft]	North [ft]	East [ft]	DLS [°/100ft]	Comments
4117.00†	17.000	173.850	4057.96	-434.89	-434.62	46.83	0.00	
4217.00†	17.000	173.850	4153.59	-463.98	-463.69	49.96	0.00	
4300.83	17.000	173.850	4233.76	-488.36	-488.06	52.59	0.00	End of Tangent
4317.00†	16.677	173.850	4249.23	-493.02	-492.72	53.09	2.00	
4417.00†	14.677	173.850	4345.51	-519.90	-519.58	55.99	2.00	
4517.00†	12.677	173.850	4442.67	-543.42	-543.09	58.52	2.00	
4617.00†	10.677	173.850	4540.60	-563.55	-563.21	60.69	2.00	
4717.00†	8.677	173.850	4639.17	-580.28	-579.92	62.49	2.00	
4817.00†	6.677	173.850	4738.27	-593.56	-593.20	63.92	2.00	
4917.00†	4.677	173.850	4837.77	-603.40	-603.04	64.98	2.00	
5017.00†	2.677	173.850	4937.56	-609.78	-609.41	65.67	2.00	
5117.00†	0.677	173.850	5037.51	-612.69	-612.32	65.98	2.00	
5150.83	0.000	358.935	5071.35	-612.89	-612.52	66.00	2.00	End of Drop
5217.00†	0.000	358.935	5137.51	-612.89	-612.52	66.00	0.00	
5317.00†	0.000	358.935	5237.51	-612.89	-612.52	66.00	0.00	
5417.00†	0.000	358.935	5337.51	-612.89	-612.52	66.00	0.00	
5517.00†	0.000	358.935	5437.51	-612.89	-612.52	66.00	0.00	
5617.00†	0.000	358.935	5537.51	-612.89	-612.52	66.00	0.00	
5717.00†	0.000	358.935	5637.51	-612.89	-612.52	66.00	0.00	
5817.00†	0.000	358.935	5737.51	-612.89	-612.52	66.00	0.00	
5873.83	0.000	358.935	5794.35	-612.89	-612.52	66.00	0.00	End of Tangent
5917.00†	4.748	358.935	5837.46	-611.11	-610.73	65.97	11.00	
6017.00†	15.748	358.935	5935.72	-593.34	-592.97	65.64	11.00	
6117.00†	26.748	358.935	6028.77	-557.16	-556.79	64.96	11.00	
6133.00†	28.508	358.935	6042.95	-549.74	-549.37	64.83	11.00	SHARON SPRINGS
6163.00†	31.808	358.935	6068.88	-534.67	-534.31	64.55	11.00	SHARON SPRINGS "A"
6201.00†	35.988	358.935	6100.42	-513.49	-513.12	64.15	11.00	SHARON SPRINGS "B"
6217.00†	37.748	358.935	6113.22	-503.89	-503.52	63.97	11.00	
6240.00†	40.278	358.935	6131.09	-489.41	-489.05	63.70	11.00	NIOBRARA "A" CHALK
6254.00†	41.818	358.935	6141.65	-480.22	-479.86	63.53	11.00	NIOBRARA "A" MARL
6315.00†	48.528	358.935	6184.62	-436.98	-436.63	62.73	11.00	NIOBRARA "B" CHALK
6317.00†	48.748	358.935	6185.95	-435.48	-435.12	62.70	11.00	
6417.00†	59.748	358.935	6244.28	-354.46	-354.11	61.20	11.00	
6510.20	70.000	358.935	6283.80	-270.20	-269.86	59.63	11.00	End of Build
6517.00†	70.000	358.935	6286.13	-263.81	-263.46	59.51	0.00	
6580.20	70.000	358.935	6307.74	-204.43	-204.09	58.41	0.00	End of Tangent
6617.00†	74.048	358.935	6319.10	-169.43	-169.10	57.76	11.00	
6717.00†	85.048	358.935	6337.21	-71.25	-70.92	55.93	11.00	
6762.04	90.002	358.935	6339.16	-26.27	-25.95	55.10	11.00	End of 3D Arc
6817.00†	90.002	358.935	6339.16	28.69	29.00	54.08	0.00	
6917.00†	90.002	358.935	6339.15	128.68	128.99	52.22	0.00	
7017.00†	90.002	358.935	6339.15	228.67	228.97	50.36	0.00	
7117.00†	90.002	358.935	6339.14	328.66	328.95	48.50	0.00	
7217.00†	90.002	358.935	6339.14	428.66	428.94	46.64	0.00	
7317.00†	90.002	358.935	6339.14	528.65	528.92	44.79	0.00	



Planned Wellpath Report

NORTH PLATTE Y44-U41-13HNB PWP (REV-A.0)
Page 4 of 6



REFERENCE WELLPATH IDENTIFICATION

Operator	BONANZA CREEK OIL COMPANY	Slot	SLOT#02 NORTH PLATTE Y44-U41-13HNB (639'FSL & 442'FEL, SEC.13)
Area	COLORADO	Well	NORTH PLATTE Y44-U41-13HNB
Field	WELD COUNTY	Wellbore	NORTH PLATTE Y44-U41-13HNB PWB
Facility	SEC.13-T05N-R63W		

WELLPATH DATA (128 stations) † = interpolated/extrapolated station

MD [ft]	Inclination [°]	Azimuth [°]	TVD [ft]	Vert Sect [ft]	North [ft]	East [ft]	DLS [°/100ft]	Comments
7417.00†	90.002	358.935	6339.13	628.64	628.90	42.93	0.00	
7517.00†	90.002	358.935	6339.13	728.63	728.88	41.07	0.00	
7617.00†	90.002	358.935	6339.13	828.62	828.87	39.21	0.00	
7717.00†	90.002	358.935	6339.12	928.61	928.85	37.35	0.00	
7817.00†	90.002	358.935	6339.12	1028.61	1028.83	35.50	0.00	
7917.00†	90.002	358.935	6339.12	1128.60	1128.81	33.64	0.00	
8017.00†	90.002	358.935	6339.11	1228.59	1228.80	31.78	0.00	
8117.00†	90.002	358.935	6339.11	1328.58	1328.78	29.92	0.00	
8217.00†	90.002	358.935	6339.10	1428.57	1428.76	28.06	0.00	
8317.00†	90.002	358.935	6339.10	1528.57	1528.75	26.21	0.00	
8417.00†	90.002	358.935	6339.10	1628.56	1628.73	24.35	0.00	
8517.00†	90.002	358.935	6339.09	1728.55	1728.71	22.49	0.00	
8617.00†	90.002	358.935	6339.09	1828.54	1828.69	20.63	0.00	
8717.00†	90.002	358.935	6339.09	1928.53	1928.68	18.78	0.00	
8817.00†	90.002	358.935	6339.08	2028.53	2028.66	16.92	0.00	
8917.00†	90.002	358.935	6339.08	2128.52	2128.64	15.06	0.00	
9017.00†	90.002	358.935	6339.08	2228.51	2228.62	13.20	0.00	
9117.00†	90.002	358.935	6339.07	2328.50	2328.61	11.34	0.00	
9217.00†	90.002	358.935	6339.07	2428.49	2428.59	9.49	0.00	
9317.00†	90.002	358.935	6339.06	2528.48	2528.57	7.63	0.00	
9417.00†	90.002	358.935	6339.06	2628.48	2628.56	5.77	0.00	
9517.00†	90.002	358.935	6339.06	2728.47	2728.54	3.91	0.00	
9617.00†	90.002	358.935	6339.05	2828.46	2828.52	2.05	0.00	
9717.00†	90.002	358.935	6339.05	2928.45	2928.50	0.20	0.00	
9817.00†	90.002	358.935	6339.05	3028.44	3028.49	-1.66	0.00	
9917.00†	90.002	358.935	6339.04	3128.44	3128.47	-3.52	0.00	
10017.00†	90.002	358.935	6339.04	3228.43	3228.45	-5.38	0.00	
10117.00†	90.002	358.935	6339.03	3328.42	3328.43	-7.24	0.00	
10217.00†	90.002	358.935	6339.03	3428.41	3428.42	-9.09	0.00	
10317.00†	90.002	358.935	6339.03	3528.40	3528.40	-10.95	0.00	
10417.00†	90.002	358.935	6339.02	3628.40	3628.38	-12.81	0.00	
10517.00†	90.002	358.935	6339.02	3728.39	3728.37	-14.67	0.00	
10617.00†	90.002	358.935	6339.02	3828.38	3828.35	-16.52	0.00	
10717.00†	90.002	358.935	6339.01	3928.37	3928.33	-18.38	0.00	
10817.00†	90.002	358.935	6339.01	4028.36	4028.31	-20.24	0.00	
10917.00†	90.002	358.935	6339.01	4128.36	4128.30	-22.10	0.00	
11017.00†	90.002	358.935	6339.00	4228.35	4228.28	-23.96	0.00	
11076.69	90.002	358.935	6339.00 ¹	4288.03	4287.95	-25.07	0.00	End of Tangent



Planned Wellpath Report

NORTH PLATTE Y44-U41-13HNB PWP (REV-A.0)
Page 5 of 6



REFERENCE WELLPATH IDENTIFICATION

Operator	BONANZA CREEK OIL COMPANY	Slot	SLOT#02 NORTH PLATTE Y44-U41-13HNB (639'FSL & 442'FEL, SEC.13)
Area	COLORADO	Well	NORTH PLATTE Y44-U41-13HNB
Field	WELD COUNTY	Wellbore	NORTH PLATTE Y44-U41-13HNB PWB
Facility	SEC.13-T05N-R63W		

HOLE & CASING SECTIONS -

Ref Wellbore: NORTH PLATTE Y44-U41-13HNB PWB Ref Wellpath: NORTH PLATTE Y44-U41-13HNB PWP (REV-A.0)

String/Diameter	Start MD [ft]	End MD [ft]	Interval [ft]	Start TVD [ft]	End TVD [ft]	Start N/S [ft]	Start E/W [ft]	End N/S [ft]	End E/W [ft]
13.5in Open Hole	17.00	1600.00	1583.00	17.00	1600.00	0.00	0.00	0.00	0.00
9.625in Casing Surface	17.00	1600.00	1583.00	17.00	1600.00	0.00	0.00	0.00	0.00
8.75in Open Hole	1600.00	11076.69	9476.69	1600.00	6339.00	0.00	0.00	4287.95	-25.07
5.5in Casing Production	17.00	11076.69	11059.69	17.00	6339.00	0.00	0.00	4287.95	-25.07

TARGETS

Name	MD [ft]	TVD [ft]	North [ft]	East [ft]	Grid East [US ft]	Grid North [US ft]	Latitude	Longitude	Shape
SEC.13-T05N-R63W		0.00	-21.86	0.00	3312874.96	1388185.13	40°23'36.708"N	104°22'36.084"W	polygon
1) NORTH PLATTE Y44-U41-13HNB BHL ON PLAT (470'FNL & 380'FEL, SEC.13)	11076.69	6339.00	4287.95	-25.07	3312795.30	1392494.10	40°24'19.296"N	104°22'36.408"W	point
NORTH PLATTE Y44-U41-13HNB TARGET 1 (531'FSL & 388'FEL, SEC.13)		6339.00	-105.65	55.71	3312931.72	1388102.05	40°23'35.880"N	104°22'35.364"W	point
NORTH PLATTE Y44-U41-13HNB TOP (631'FSL & 388'FEL, SEC.13)		6339.00	-7.29	52.92	3312927.69	1388200.37	40°23'36.852"N	104°22'35.400"W	point
SEC.13-T05N-R63W (460' SETBACK)		6514.00	-21.86	0.00	3312874.96	1388185.13	40°23'36.708"N	104°22'36.084"W	polygon

SURVEY PROGRAM -

Ref Wellbore: NORTH PLATTE Y44-U41-13HNB PWB Ref Wellpath: NORTH PLATTE Y44-U41-13HNB PWP (REV-A.0)

Start MD [ft]	End MD [ft]	Positional Uncertainty Model	Log Name/Comment	Wellbore
17.00	11076.69	Custom NaviTrak (MagCorr) (Rockies 0.03Gt model)		NORTH PLATTE Y44-U41-13HNB PWB



Planned Wellpath Report

NORTH PLATTE Y44-U41-13HNB PWP (REV-A.0)
Page 6 of 6



REFERENCE WELLPATH IDENTIFICATION

Operator	BONANZA CREEK OIL COMPANY	Slot	SLOT#02 NORTH PLATTE Y44-U41-13HNB (639'FSL & 442'FEL, SEC.13)
Area	COLORADO	Well	NORTH PLATTE Y44-U41-13HNB
Field	WELD COUNTY	Wellbore	NORTH PLATTE Y44-U41-13HNB PWB
Facility	SEC.13-T05N-R63W		

WELLPATH COMMENTS

MD [ft]	Inclination [°]	Azimuth [°]	TVD [ft]	Comment
3369.00	17.000	173.850	3342.64	PARKMAN
6133.00	28.508	358.935	6042.95	SHARON SPRINGS
6163.00	31.808	358.935	6068.88	SHARON SPRINGS "A"
6201.00	35.988	358.935	6100.42	SHARON SPRINGS "B"
6240.00	40.278	358.935	6131.09	NIOBRARA "A" CHALK
6254.00	41.818	358.935	6141.65	NIOBRARA "A" MARL
6315.00	48.528	358.935	6184.62	NIOBRARA "B" CHALK

DESIGN COMMENTS

MD [ft]	Inclination [°]	Azimuth [°]	TVD [ft]	Comment
17.00	0.000	173.850	17.00	Tie On
2200.00	0.000	173.850	2200.00	End of Tangent
3050.00	17.000	173.850	3037.58	End of Build
4300.83	17.000	173.850	4233.76	End of Tangent
5150.83	0.000	358.935	5071.35	End of Drop
5873.83	0.000	358.935	5794.35	End of Tangent
6510.20	70.000	358.935	6283.80	End of Build
6580.20	70.000	358.935	6307.74	End of Tangent
6762.04	90.002	358.935	6339.16	End of 3D Arc
11076.69	90.002	358.935	6339.00	End of Tangent