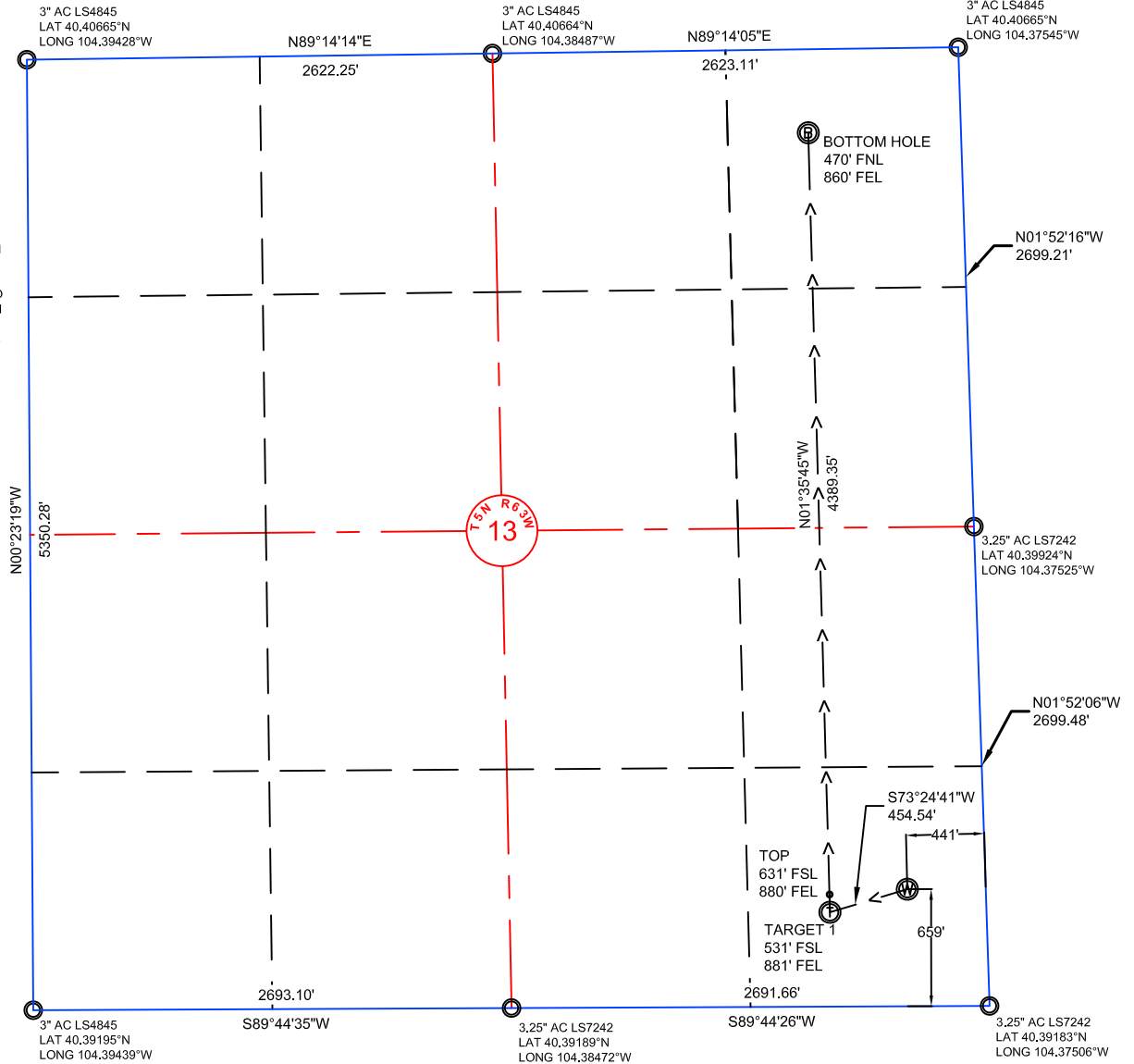


NOTE: UNDER COLORADO LAW, YOU MUST COMMENCE ANY LEGAL ACTION BASED ON ANY DEFECT IN THIS CERTIFICATE WITHIN THREE YEARS AFTER DEFECT IS DISCOVERED. IN NO EVENT MAY ANY ACTION BASED UPON ANY DEFECT IN THIS SURVEY BE COMMENCED MORE THAN TEN YEARS AFTER DATE OF THIS CERTIFICATE SHOWN HEREON. (13-80105 C.R.S)



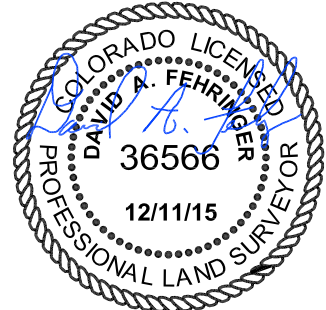
NOTES:

- ALL BEARINGS ARE GRID BASED UPON THE COLORADO STATE PLANE COORDINATE SYSTEM, NORTH ZONE, NAD83(2011) DERIVED FROM POST-PROCESSED STATIC GPS OBSERVATIONS.
- DISTANCES ARE ON GRID
- VERTICAL DATUM IS NAVD88 BASED UPON GPS OBSERVATIONS
- PDOP VALUE EQUALS 1.3.
- GPS OPERATOR: JOHN STODDARD.
- UNDISTURBED GROUND ELEVATION AT WELLHEAD = 4596.8'
- ALL SECTION LENGTHS ARE MEASURED DISTANCES UNLESS NOTED BY (R), RECORD BEARING AND DISTANCE.
- NEAREST CULTURAL DISTANCES
 - BUILDINGS: 1701' +/-
 - BUILDING UNIT: 1701' +/-
 - HIGH OCCUPANCY BUILDING UNIT: 5280'+
 - DESIGNATED OUTSIDE ACTIVITY AREA: 5280'+
 - PUBLIC ROAD: 5280'+
 - ABOVE GROUND UTILITY: 1614' +/-
 - RAILROAD: 5280'+
 - PROPERTY LINE: 4734' +/-

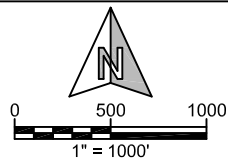
3	NAD 83		STATE PLANE COORDINATES	
T44-P41-13HNC	LATITUDE	LONGITUDE	NORTHING	EASTING
SURFACE	40.39364	104.37669	1388228.01	3312873.99
TARGET 1	40.39331	104.37826	1388098.24'	3312438.37'
TOP	40.39358	104.37827	1388198.20	3312435.5800
BOTTOM HOLE	40.40535	104.37850	1392485.89'	3312316.13'

CERTIFICATE OF SURVEYOR:

I, DAVID A. FEHRINGER OF LANDER, WYOMING HEREBY CERTIFY THAT THIS WELL LOCATION CERTIFICATE WAS PREPARED FROM NOTES TAKEN DURING AN ACTUAL SURVEY ON DECEMBER 15, 2015; AND THAT IT CORRECTLY SHOWS THE DRILLING LOCATION OF BONANZA CREEK ENERGY, INC., NORTH PLATTE T44-P41-13HNC AS STAKED DURING SAID SURVEY. THIS MAP DOES NOT REPRESENT A BOUNDARY SURVEY OR AN IMPROVEMENT LOCATION PLAT AND SHOULD NOT BE USED FOR THE ESTABLISHMENT OF BOUNDARY LINES.



Drawn By: MAM
 Checked By: DAF
 Date: 12-22-2014
 Revision: 3
 Date: 12-11-15
 Explanation:
 WELL AN PAD
 CHANGES



IF BAR LENGTH DOES NOT EQUAL 1"(ONE INCH), THIS PAGE WAS NOT PLOTTED TO THE INTENDED SCALE.

WELL LOCATION CERTIFICATE

NORTH PLATTE
 T44-P41-13HNC
 SE¼, SECTION 13,
 T.5N., R.63W., 6th PM
 WELD COUNTY, COLORADO



410 17TH STREET
 DENVER, CO 80202
 (720) 440-6100

SHEET
 1
 OF
 1