

BONANZA CREEK OIL COMPANY

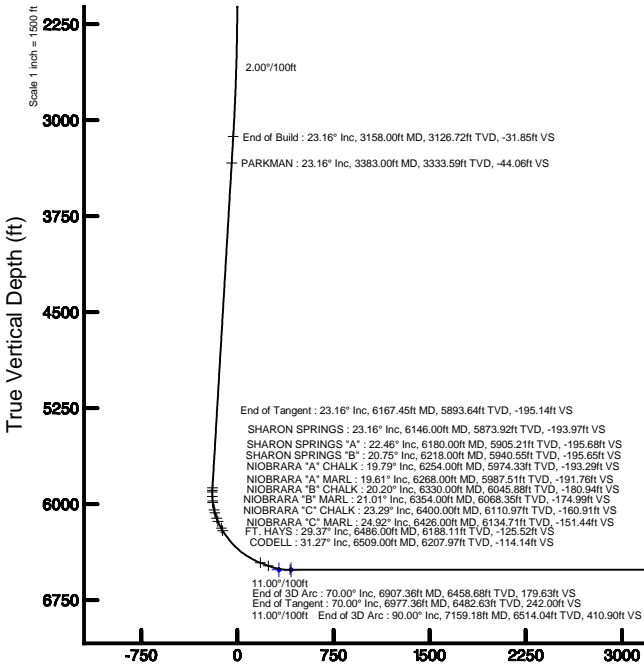
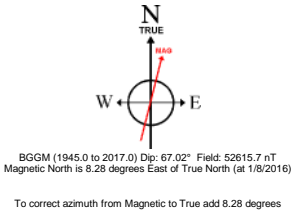
Location: COLORADO Slot: SLOT#04 NORTH PLATTE T34-P31-13HC (679'FSL & 441'FEL, SEC.13)
Field: WELD COUNTY Well: NORTH PLATTE T34-P31-13HC
Facility: SEC.13-T05N-R63W Wellbore: NORTH PLATTE T34-P31-13HC PWB

Plot reference wellpath is NORTH PLATTE T34-P31-13HC PWP (REV-A.0)

True vertical depths are referenced to XTREME 22 (17KB) (RKB)	Grid System: NAD83 / Lambert Colorado SP, Northern Zone (501), US feet
Measured depths are referenced to XTREME 22 (17KB) (RKB)	North Reference: True north
XTREME 22 (17KB) (RKB) to Mean Sea Level: 4614 feet	Scale: True distance
Mean Sea Level to Mud line (At Slot: SLOT#04 NORTH PLATTE T34-P31-13HC (679'FSL & 441'FEL, SEC.13)): 0 feet	Depths are in feet
Coordinates are in feet referenced to Slot	Created by: ingnjm on 1/11/2016

Location Information

Facility Name	Grid East (US ft)	Grid North (US ft)	Latitude	Longitude
SEC.13-T05N-R63W	3312874.958	1388185.127	40°23'36.708"N	104°22'36.084"W
Slot	Local N (ft)	Local E (ft)	Grid East (US ft)	Grid North (US ft)
SLOT#04 NORTH PLATTE T34-P31-13HC (679'FSL & 441'FEL, SEC.13)	61.93	-0.00	3312874.173	1388247.053
XTREME 22 (17KB) (RKB) to Mud line (At Slot: SLOT#04 NORTH PLATTE T34-P31-13HC (679'FSL & 441'FEL, SEC.13))				4614ft
Mean Sea Level to Mud line (At Slot: SLOT#04 NORTH PLATTE T34-P31-13HC (679'FSL & 441'FEL, SEC.13))				0ft
XTREME 22 (17KB) (RKB) to Mean Sea Level				4614ft



5.5in Casing Production : 90.00° Inc, 11448.35ft MD, 6514.00ft TVD, 4477.40ft VS

End of Tangent : 90.00° Inc, 11448.35ft MD, 6514.00ft TVD, 4477.40ft VS

NORTH PLATTE T34-P31-13HC BHL ON PLAT (470'FNL & 1820'FEL, SEC.13)

Vertical Section (ft)

Azimuth 341.43° with reference 0.00 N, 0.00 E

Well Profile Data

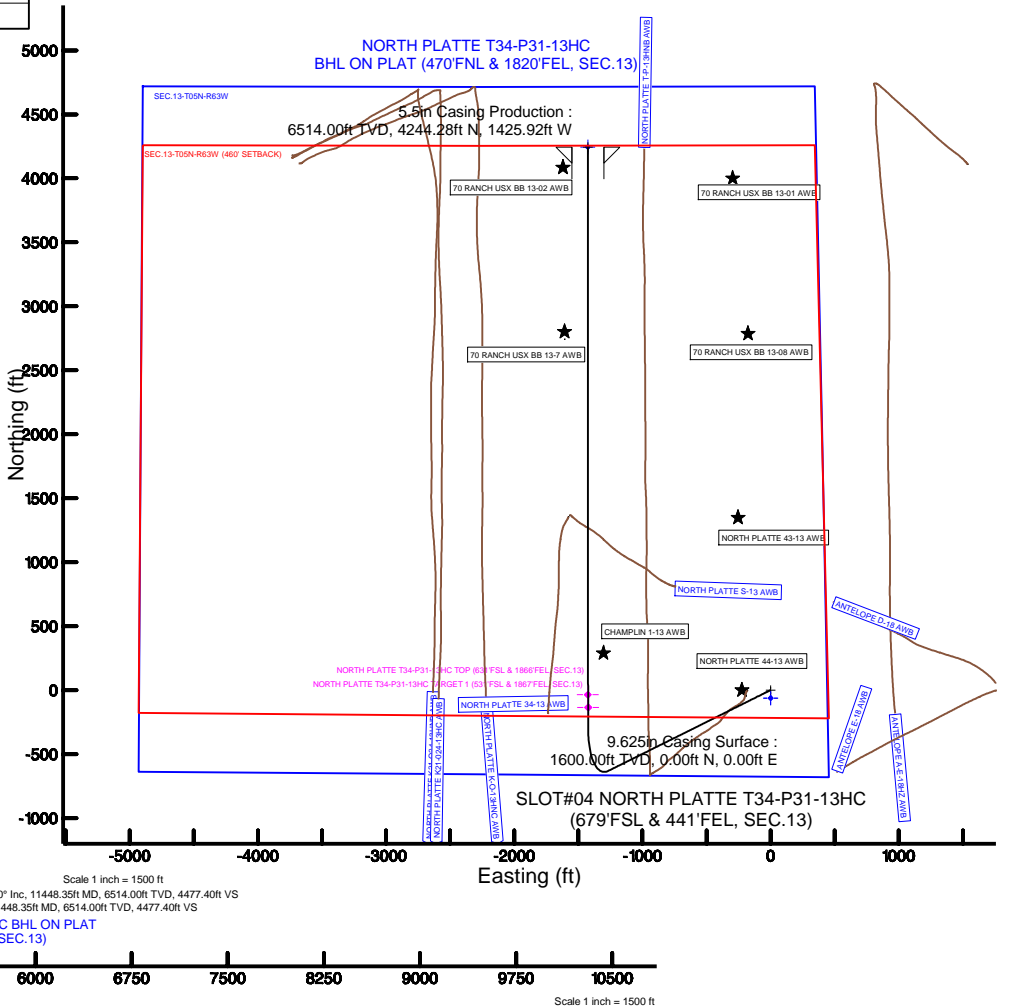
Design Comment	MD (ft)	Inc (°)	Az (°)	TVD (ft)	Local N (ft)	Local E (ft)	DLS (°/100ft)	VS (ft)
Tie On	17.00	0.000	243.500	17.00	0.00	0.00	0.00	0.00
End of Tangent	2000.00	0.000	243.500	2000.00	0.00	0.00	0.00	0.00
End of Build	3158.00	23.160	243.500	3126.72	-103.02	-206.62	2.00	-31.85
End of Tangent	6167.45	23.160	243.500	5893.64	-631.14	-1265.88	0.00	-195.14
End of 3D Arc	6907.36	70.000	359.972	6458.68	-288.83	-1423.75	11.00	179.63
End of Tangent	6977.36	70.000	359.972	6482.63	-223.05	-1423.78	0.00	242.00
End of 3D Arc	7159.18	90.001	359.973	6514.04	-44.90	-1423.86	11.00	410.90
End of Tangent	11448.35	90.001	359.973	6514.00	4244.28	-1425.92	0.00	4477.40

Survey Program

Start MD (ft)	End MD (ft)	Tool	Model	Log Name/Comment	Wellbore
17.00	11448.35	NavTrak	Custom NavTrak (MagCorr) (Rockies 0.03Gt model)		NORTH PLATTE T34-P31-13HC PWB

Bottom Hole Location

MD (ft)	Inc (°)	Az (°)	TVD (ft)	Local N (ft)	Local E (ft)	Grid East (US ft)	Grid North (US ft)	Latitude	Longitude
11448.35	90.001	359.973	6514.00	4244.28	-1425.92	3311394.67	1392472.75	40°24'19.260"N	104°22'54.516"W





Planned Wellpath Report

NORTH PLATTE T34-P31-13HC PWP (REV-A.0)
Page 1 of 6



REFERENCE WELLPATH IDENTIFICATION

Operator	BONANZA CREEK OIL COMPANY	Slot	SLOT#04 NORTH PLATTE T34-P31-13HC (679'FSL & 441'FEL, SEC.13)
Area	COLORADO	Well	NORTH PLATTE T34-P31-13HC
Field	WELD COUNTY	Wellbore	NORTH PLATTE T34-P31-13HC PWB
Facility	SEC.13-T05N-R63W		

REPORT SETUP INFORMATION

Projection System	NAD83 / Lambert Colorado SP, Northern Zone (501), US feet	Software System	WellArchitect® 4.1.1
North Reference	True	User	Ingmjmr
Scale	0.99996	Report Generated	1/11/2016 at 11:56:51 AM
Convergence at slot	0.73° East	Database/Source file	WA_DEN_Denver_Defn/NORTH_PLATTE_T34-P31-13HC_PWB.xml

WELLPATH LOCATION

	Local coordinates		Grid coordinates		Geographic coordinates	
	North[ft]	East[ft]	Easting[US ft]	Northing[US ft]	Latitude	Longitude
Slot Location	61.93	-0.00	3312874.17	1388247.05	40°23'37.320"N	104°22'36.084"W
Facility Reference Pt			3312874.96	1388185.13	40°23'36.708"N	104°22'36.084"W
Field Reference Pt			3335925.10	1457282.25	40°34'56.460"N	104°17'26.016"W

WELLPATH DATUM

Calculation method	Minimum curvature	XTREME 22 (17'KB) (RKB) to Facility Vertical Datum	4614.00ft
Horizontal Reference Pt	Slot	XTREME 22 (17'KB) (RKB) to Mean Sea Level	4614.00ft
Vertical Reference Pt	XTREME 22 (17'KB) (RKB)	XTREME 22 (17'KB) (RKB) to Mud Line at Slot (SLOT#04 NORTH PLATTE T34-P31-13HC (679'FSL & 441'FEL, SEC.13))	4614.00ft
MD Reference Pt	XTREME 22 (17'KB) (RKB)	Section Origin	N 0.00, E 0.00 ft
Field Vertical Reference	Mean Sea Level	Section Azimuth	341.43°



Planned Wellpath Report

NORTH PLATTE T34-P31-13HC PWP (REV-A.0)
Page 2 of 6



REFERENCE WELLPATH IDENTIFICATION

Operator	BONANZA CREEK OIL COMPANY	Slot	SLOT#04 NORTH PLATTE T34-P31-13HC (679'FSL & 441'FEL, SEC.13)
Area	COLORADO	Well	NORTH PLATTE T34-P31-13HC
Field	WELD COUNTY	Wellbore	NORTH PLATTE T34-P31-13HC PWB
Facility	SEC.13-T05N-R63W		

WELLPATH DATA (135 stations) † = interpolated/extrapolated station

MD [ft]	Inclination [°]	Azimuth [°]	TVD [ft]	Vert Sect [ft]	North [ft]	East [ft]	DLS [°/100ft]	Comments
0.00†	0.000	243.500	0.00	0.00	0.00	0.00	0.00	
17.00	0.000	243.500	17.00	0.00	0.00	0.00	0.00	Tie On
117.00†	0.000	243.500	117.00	0.00	0.00	0.00	0.00	
217.00†	0.000	243.500	217.00	0.00	0.00	0.00	0.00	
317.00†	0.000	243.500	317.00	0.00	0.00	0.00	0.00	
417.00†	0.000	243.500	417.00	0.00	0.00	0.00	0.00	
517.00†	0.000	243.500	517.00	0.00	0.00	0.00	0.00	
617.00†	0.000	243.500	617.00	0.00	0.00	0.00	0.00	
717.00†	0.000	243.500	717.00	0.00	0.00	0.00	0.00	
817.00†	0.000	243.500	817.00	0.00	0.00	0.00	0.00	
917.00†	0.000	243.500	917.00	0.00	0.00	0.00	0.00	
1017.00†	0.000	243.500	1017.00	0.00	0.00	0.00	0.00	
1117.00†	0.000	243.500	1117.00	0.00	0.00	0.00	0.00	
1217.00†	0.000	243.500	1217.00	0.00	0.00	0.00	0.00	
1317.00†	0.000	243.500	1317.00	0.00	0.00	0.00	0.00	
1417.00†	0.000	243.500	1417.00	0.00	0.00	0.00	0.00	
1517.00†	0.000	243.500	1517.00	0.00	0.00	0.00	0.00	
1617.00†	0.000	243.500	1617.00	0.00	0.00	0.00	0.00	
1717.00†	0.000	243.500	1717.00	0.00	0.00	0.00	0.00	
1817.00†	0.000	243.500	1817.00	0.00	0.00	0.00	0.00	
1917.00†	0.000	243.500	1917.00	0.00	0.00	0.00	0.00	
2000.00	0.000	243.500	2000.00	0.00	0.00	0.00	0.00	End of Tangent
2017.00†	0.340	243.500	2017.00	-0.01	-0.02	-0.05	2.00	
2117.00†	2.340	243.500	2116.97	-0.33	-1.07	-2.14	2.00	
2217.00†	4.340	243.500	2216.79	-1.13	-3.67	-7.35	2.00	
2317.00†	6.340	243.500	2316.35	-2.42	-7.82	-15.68	2.00	
2417.00†	8.340	243.500	2415.53	-4.18	-13.52	-27.11	2.00	
2517.00†	10.340	243.500	2514.20	-6.42	-20.76	-41.64	2.00	
2617.00†	12.340	243.500	2612.24	-9.13	-29.53	-59.23	2.00	
2717.00†	14.340	243.500	2709.54	-12.31	-39.83	-79.88	2.00	
2817.00†	16.340	243.500	2805.97	-15.96	-51.63	-103.55	2.00	
2917.00†	18.340	243.500	2901.42	-20.07	-64.93	-130.23	2.00	
3017.00†	20.340	243.500	2995.77	-24.64	-79.70	-159.86	2.00	
3117.00†	22.340	243.500	3088.91	-29.66	-95.94	-192.43	2.00	
3158.00	23.160	243.500	3126.72	-31.85	-103.02	-206.62	2.00	End of Build
3217.00†	23.160	243.500	3180.97	-35.05	-113.37	-227.38	0.00	
3317.00†	23.160	243.500	3272.91	-40.48	-130.92	-262.58	0.00	
3383.00†	23.160	243.500	3333.59	-44.06	-142.50	-285.81	0.00	PARKMAN
3417.00†	23.160	243.500	3364.85	-45.90	-148.47	-297.78	0.00	
3517.00†	23.160	243.500	3456.79	-51.33	-166.02	-332.98	0.00	
3617.00†	23.160	243.500	3548.73	-56.75	-183.56	-368.17	0.00	
3717.00†	23.160	243.500	3640.67	-62.18	-201.11	-403.37	0.00	
3817.00†	23.160	243.500	3732.61	-67.61	-218.66	-438.57	0.00	
3917.00†	23.160	243.500	3824.55	-73.03	-236.21	-473.77	0.00	
4017.00†	23.160	243.500	3916.50	-78.46	-253.76	-508.97	0.00	



Planned Wellpath Report

NORTH PLATTE T34-P31-13HC PWP (REV-A.0)

Page 3 of 6



REFERENCE WELLPATH IDENTIFICATION

Operator	BONANZA CREEK OIL COMPANY	Slot	SLOT#04 NORTH PLATTE T34-P31-13HC (679'FSL & 441'FEL, SEC.13)
Area	COLORADO	Well	NORTH PLATTE T34-P31-13HC
Field	WELD COUNTY	Wellbore	NORTH PLATTE T34-P31-13HC PWB
Facility	SEC.13-T05N-R63W		

WELLPATH DATA (135 stations) † = interpolated/extrapolated station

MD [ft]	Inclination [°]	Azimuth [°]	TVD [ft]	Vert Sect [ft]	North [ft]	East [ft]	DLS [°/100ft]	Comments
4117.00†	23.160	243.500	4008.44	-83.88	-271.31	-544.16	0.00	
4217.00†	23.160	243.500	4100.38	-89.31	-288.86	-579.36	0.00	
4317.00†	23.160	243.500	4192.32	-94.74	-306.41	-614.56	0.00	
4417.00†	23.160	243.500	4284.26	-100.16	-323.96	-649.76	0.00	
4517.00†	23.160	243.500	4376.20	-105.59	-341.51	-684.95	0.00	
4617.00†	23.160	243.500	4468.14	-111.01	-359.05	-720.15	0.00	
4717.00†	23.160	243.500	4560.08	-116.44	-376.60	-755.35	0.00	
4817.00†	23.160	243.500	4652.02	-121.86	-394.15	-790.55	0.00	
4917.00†	23.160	243.500	4743.96	-127.29	-411.70	-825.75	0.00	
5017.00†	23.160	243.500	4835.91	-132.72	-429.25	-860.94	0.00	
5117.00†	23.160	243.500	4927.85	-138.14	-446.80	-896.14	0.00	
5217.00†	23.160	243.500	5019.79	-143.57	-464.35	-931.34	0.00	
5317.00†	23.160	243.500	5111.73	-148.99	-481.90	-966.54	0.00	
5417.00†	23.160	243.500	5203.67	-154.42	-499.45	-1001.73	0.00	
5517.00†	23.160	243.500	5295.61	-159.84	-517.00	-1036.93	0.00	
5617.00†	23.160	243.500	5387.55	-165.27	-534.54	-1072.13	0.00	
5717.00†	23.160	243.500	5479.49	-170.70	-552.09	-1107.33	0.00	
5817.00†	23.160	243.500	5571.43	-176.12	-569.64	-1142.53	0.00	
5917.00†	23.160	243.500	5663.37	-181.55	-587.19	-1177.72	0.00	
6017.00†	23.160	243.500	5755.32	-186.97	-604.74	-1212.92	0.00	
6117.00†	23.160	243.500	5847.26	-192.40	-622.29	-1248.12	0.00	
6146.00†	23.160	243.500	5873.92	-193.97	-627.38	-1258.33	0.00	SHARON SPRINGS
6167.45	23.160	243.500	5893.64	-195.14	-631.14	-1265.88	0.00	End of Tangent
6180.00†	22.463	246.575	5905.21	-195.68	-633.20	-1270.28	11.00	SHARON SPRINGS "A"
6217.00†	20.790	256.660	5939.62	-195.68	-637.52	-1283.17	11.00	
6218.00†	20.754	256.952	5940.55	-195.65	-637.60	-1283.51	11.00	SHARON SPRINGS "B"
6254.00†	19.791	268.057	5974.33	-193.29	-639.25	-1295.82	11.00	NIOBRARA "A" CHALK
6268.00†	19.612	272.595	5987.51	-191.76	-639.23	-1300.54	11.00	NIOBRARA "A" MARL
6317.00†	19.896	288.567	6033.66	-183.75	-636.20	-1316.67	11.00	
6330.00†	20.204	292.641	6045.88	-180.94	-634.63	-1320.84	11.00	NIOBRARA "B" CHALK
6354.00†	21.008	299.791	6068.35	-174.99	-630.89	-1328.40	11.00	NIOBRARA "B" MARL
6400.00†	23.287	311.810	6110.97	-160.91	-620.73	-1342.34	11.00	NIOBRARA "C" CHALK
6417.00†	24.331	315.653	6126.52	-154.84	-615.98	-1347.29	11.00	
6426.00†	24.921	317.562	6134.71	-151.44	-613.26	-1349.87	11.00	NIOBRARA "C" MARL
6486.00†	29.373	328.286	6188.11	-125.52	-591.39	-1366.15	11.00	FT. HAYS
6509.00†	31.267	331.612	6207.97	-114.14	-581.34	-1371.95	11.00	CODELL
6517.00†	31.944	332.684	6214.78	-110.00	-577.63	-1373.91	11.00	
6617.00†	40.994	343.284	6295.20	-50.89	-522.54	-1395.55	11.00	
6717.00†	50.710	350.508	6364.81	20.32	-452.75	-1411.42	11.00	
6817.00†	60.761	355.933	6421.07	101.02	-370.81	-1420.92	11.00	
6907.36	70.000	359.972	6458.68	179.63	-288.83	-1423.75	11.00	End of 3D Arc
6917.00†	70.000	359.972	6461.98	188.22	-279.76	-1423.75	0.00	
6977.36	70.000	359.972	6482.63	242.00	-223.05	-1423.78	0.00	End of Tangent
7017.00†	74.361	359.972	6494.75	277.77	-185.32	-1423.80	11.00	
7117.00†	85.361	359.972	6512.33	370.95	-87.03	-1423.84	11.00	



Planned Wellpath Report

NORTH PLATTE T34-P31-13HC PWP (REV-A.0)

Page 4 of 6



REFERENCE WELLPATH IDENTIFICATION

Operator	BONANZA CREEK OIL COMPANY	Slot	SLOT#04 NORTH PLATTE T34-P31-13HC (679'FSL & 441'FEL, SEC.13)
Area	COLORADO	Well	NORTH PLATTE T34-P31-13HC
Field	WELD COUNTY	Wellbore	NORTH PLATTE T34-P31-13HC PWB
Facility	SEC.13-T05N-R63W		

WELLPATH DATA (135 stations) † = interpolated/extrapolated station

MD [ft]	Inclination [°]	Azimuth [°]	TVD [ft]	Vert Sect [ft]	North [ft]	East [ft]	DLS [°/100ft]	Comments
7159.18	90.001	359.973	6514.04	410.90	-44.90	-1423.86	11.00	End of 3D Arc
7217.00†	90.001	359.973	6514.04	465.72	12.93	-1423.89	0.00	
7317.00†	90.001	359.973	6514.04	560.53	112.93	-1423.94	0.00	
7417.00†	90.001	359.973	6514.04	655.34	212.93	-1423.99	0.00	
7517.00†	90.001	359.973	6514.03	750.15	312.93	-1424.04	0.00	
7617.00†	90.001	359.973	6514.03	844.95	412.93	-1424.08	0.00	
7717.00†	90.001	359.973	6514.03	939.76	512.93	-1424.13	0.00	
7817.00†	90.001	359.973	6514.03	1034.57	612.93	-1424.18	0.00	
7917.00†	90.001	359.973	6514.03	1129.38	712.93	-1424.23	0.00	
8017.00†	90.001	359.973	6514.03	1224.19	812.93	-1424.28	0.00	
8117.00†	90.001	359.973	6514.03	1319.00	912.93	-1424.32	0.00	
8217.00†	90.001	359.973	6514.03	1413.80	1012.93	-1424.37	0.00	
8317.00†	90.001	359.973	6514.03	1508.61	1112.93	-1424.42	0.00	
8417.00†	90.001	359.973	6514.03	1603.42	1212.93	-1424.47	0.00	
8517.00†	90.001	359.973	6514.03	1698.23	1312.93	-1424.52	0.00	
8617.00†	90.001	359.973	6514.02	1793.04	1412.93	-1424.56	0.00	
8717.00†	90.001	359.973	6514.02	1887.85	1512.93	-1424.61	0.00	
8817.00†	90.001	359.973	6514.02	1982.66	1612.92	-1424.66	0.00	
8917.00†	90.001	359.973	6514.02	2077.46	1712.92	-1424.71	0.00	
9017.00†	90.001	359.973	6514.02	2172.27	1812.92	-1424.75	0.00	
9117.00†	90.001	359.973	6514.02	2267.08	1912.92	-1424.80	0.00	
9217.00†	90.001	359.973	6514.02	2361.89	2012.92	-1424.85	0.00	
9317.00†	90.001	359.973	6514.02	2456.70	2112.92	-1424.90	0.00	
9417.00†	90.001	359.973	6514.02	2551.51	2212.92	-1424.95	0.00	
9517.00†	90.001	359.973	6514.02	2646.32	2312.92	-1424.99	0.00	
9617.00†	90.001	359.973	6514.02	2741.12	2412.92	-1425.04	0.00	
9717.00†	90.001	359.973	6514.02	2835.93	2512.92	-1425.09	0.00	
9817.00†	90.001	359.973	6514.01	2930.74	2612.92	-1425.14	0.00	
9917.00†	90.001	359.973	6514.01	3025.55	2712.92	-1425.19	0.00	
10017.00†	90.001	359.973	6514.01	3120.36	2812.92	-1425.23	0.00	
10117.00†	90.001	359.973	6514.01	3215.17	2912.92	-1425.28	0.00	
10217.00†	90.001	359.973	6514.01	3309.98	3012.92	-1425.33	0.00	
10317.00†	90.001	359.973	6514.01	3404.78	3112.92	-1425.38	0.00	
10417.00†	90.001	359.973	6514.01	3499.59	3212.92	-1425.43	0.00	
10517.00†	90.001	359.973	6514.01	3594.40	3312.92	-1425.47	0.00	
10617.00†	90.001	359.973	6514.01	3689.21	3412.92	-1425.52	0.00	
10717.00†	90.001	359.973	6514.01	3784.02	3512.92	-1425.57	0.00	
10817.00†	90.001	359.973	6514.01	3878.83	3612.92	-1425.62	0.00	
10917.00†	90.001	359.973	6514.00	3973.64	3712.92	-1425.67	0.00	
11017.00†	90.001	359.973	6514.00	4068.44	3812.92	-1425.71	0.00	
11117.00†	90.001	359.973	6514.00	4163.25	3912.92	-1425.76	0.00	
11217.00†	90.001	359.973	6514.00	4258.06	4012.92	-1425.81	0.00	
11317.00†	90.001	359.973	6514.00	4352.87	4112.92	-1425.86	0.00	
11417.00†	90.001	359.973	6514.00	4447.68	4212.92	-1425.91	0.00	
11448.35	90.001	359.973	6514.00 ¹	4477.40	4244.28	-1425.92	0.00	End of Tangent



Planned Wellpath Report

NORTH PLATTE T34-P31-13HC PWP (REV-A.0)

Page 5 of 6



REFERENCE WELLPATH IDENTIFICATION

Operator	BONANZA CREEK OIL COMPANY	Slot	SLOT#04 NORTH PLATTE T34-P31-13HC (679'FSL & 441'FEL, SEC.13)
Area	COLORADO	Well	NORTH PLATTE T34-P31-13HC
Field	WELD COUNTY	Wellbore	NORTH PLATTE T34-P31-13HC PWB
Facility	SEC.13-T05N-R63W		

HOLE & CASING SECTIONS -

Ref Wellbore: NORTH PLATTE T34-P31-13HC PWB

Ref Wellpath: NORTH PLATTE T34-P31-13HC PWP (REV-A.0)

String/Diameter	Start MD [ft]	End MD [ft]	Interval [ft]	Start TVD [ft]	End TVD [ft]	Start N/S [ft]	Start E/W [ft]	End N/S [ft]	End E/W [ft]
13.5in Open Hole	17.00	1600.00	1583.00	17.00	1600.00	0.00	0.00	0.00	0.00
9.625in Casing Surface	17.00	1600.00	1583.00	17.00	1600.00	0.00	0.00	0.00	0.00
8.75in Open Hole	1600.00	11448.35	9848.35	1600.00	6514.00	0.00	0.00	4244.28	-1425.92
5.5in Casing Production	17.00	11448.35	11431.35	17.00	6514.00	0.00	0.00	4244.28	-1425.92

TARGETS

Name	MD [ft]	TVD [ft]	North [ft]	East [ft]	Grid East [US ft]	Grid North [US ft]	Latitude	Longitude	Shape
SEC.13-T05N-R63W		0.00	-61.93	0.00	3312874.96	1388185.13	40°23'36.708"N	104°22'36.084"W	polygon
1) NORTH PLATTE T34-P31-13HC BHL ON PLAT (470'FNL & 1820'FEL, SEC.13)	11448.35	6514.00	4244.28	-1425.92	3311394.67	1392472.75	40°24'19.260"N	104°22'54.516"W	point
NORTH PLATTE T34-P31-13HC TARGET 1 (531'FSL & 1867'FEL, SEC.13)		6514.00	-134.75	-1423.39	3311452.67	1388094.28	40°23'35.988"N	104°22'54.480"W	point
NORTH PLATTE T34-P31-13HC TOP (631'FSL & 1866'FEL, SEC.13)		6514.00	-36.39	-1426.17	3311448.64	1388192.60	40°23'36.960"N	104°22'54.516"W	point
SEC.13-T05N-R63W (460' SETBACK)		6514.00	-61.93	0.00	3312874.96	1388185.13	40°23'36.708"N	104°22'36.084"W	polygon

SURVEY PROGRAM -

Ref Wellbore: NORTH PLATTE T34-P31-13HC PWB

Ref Wellpath: NORTH PLATTE T34-P31-13HC PWP (REV-A.0)

Start MD [ft]	End MD [ft]	Positional Uncertainty Model	Log Name/Comment	Wellbore
17.00	11448.35	Custom NaviTrak (MagCorr) (Rockies 0.03Gt model)		NORTH PLATTE T34-P31-13HC PWB



Planned Wellpath Report

NORTH PLATTE T34-P31-13HC PWP (REV-A.0)
Page 6 of 6



REFERENCE WELLPATH IDENTIFICATION

Operator	BONANZA CREEK OIL COMPANY	Slot	SLOT#04 NORTH PLATTE T34-P31-13HC (679'FSL & 441'FEL, SEC.13)
Area	COLORADO	Well	NORTH PLATTE T34-P31-13HC
Field	WELD COUNTY	Wellbore	NORTH PLATTE T34-P31-13HC PWB
Facility	SEC.13-T05N-R63W		

WELLPATH COMMENTS

MD [ft]	Inclination [°]	Azimuth [°]	TVD [ft]	Comment
3383.00	23.160	243.500	3333.59	PARKMAN
6146.00	23.160	243.500	5873.92	SHARON SPRINGS
6180.00	22.463	246.575	5905.21	SHARON SPRINGS "A"
6218.00	20.754	256.952	5940.55	SHARON SPRINGS "B"
6254.00	19.791	268.057	5974.33	NIOBRARA "A" CHALK
6268.00	19.612	272.595	5987.51	NIOBRARA "A" MARL
6330.00	20.204	292.641	6045.88	NIOBRARA "B" CHALK
6354.00	21.008	299.791	6068.35	NIOBRARA "B" MARL
6400.00	23.287	311.810	6110.97	NIOBRARA "C" CHALK
6426.00	24.921	317.562	6134.71	NIOBRARA "C" MARL
6486.00	29.373	328.286	6188.11	FT. HAYS
6509.00	31.267	331.612	6207.97	CODELL

DESIGN COMMENTS

MD [ft]	Inclination [°]	Azimuth [°]	TVD [ft]	Comment
17.00	0.000	243.500	17.00	Tie On
2000.00	0.000	243.500	2000.00	End of Tangent
3158.00	23.160	243.500	3126.72	End of Build
6167.45	23.160	243.500	5893.64	End of Tangent
6907.36	70.000	359.972	6458.68	End of 3D Arc
6977.36	70.000	359.972	6482.63	End of Tangent
7159.18	90.001	359.973	6514.04	End of 3D Arc
11448.35	90.001	359.973	6514.00	End of Tangent