

BONANZA CREEK OIL COMPANY

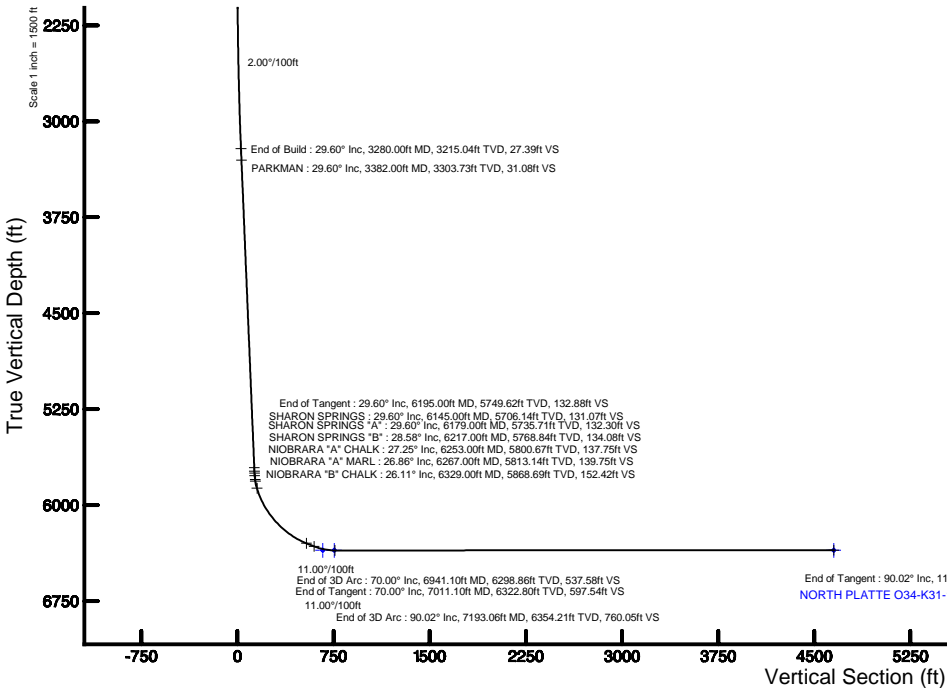
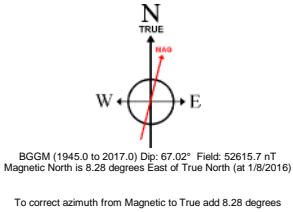
Location: COLORADO Slot: SLOT#05 NORTH PLATTE O34-K31-13HNB (699'FSL & 440'FEL, SEC.13)
Field: WELD COUNTY Well: NORTH PLATTE O34-K31-13HNB
Facility: SEC.13-T05N-R63W Wellbore: NORTH PLATTE O34-K31-13HNB PWB

Plot reference wellpath is NORTH PLATTE O34-K31-13HNB PWP (REV-A.0)

True vertical depths are referenced to XTREME 22 (17KB) (RKB)	Grid System: NAD83 / Lambert Colorado SP, Northern Zone (501), US feet
Measured depths are referenced to XTREME 22 (17KB) (RKB)	North Reference: True north
XTREME 22 (17KB) (RKB) to Mean Sea Level: 4614 feet	Scale: True distance
Mean Sea Level to Mud line (At Slot: SLOT#05 NORTH PLATTE O34-K31-13HNB (699'FSL & 440'FEL, SEC.13)): 0 feet	Depths are in feet
Coordinates are in feet referenced to Slot	Created by: ingmjmr on 1/11/2016

Location Information

Facility Name	Grid East (US ft)	Grid North (US ft)	Latitude	Longitude
SEC.13-T05N-R63W	3312874.958	1386185.127	40°23'36.708"N	104°22'36.084"W
Slot	Local N (ft)	Local E (ft)	Grid East (US ft)	Grid North (US ft)
SLOT#05 NORTH PLATTE O34-K31-13HNB (699'FSL & 440'FEL, SEC.13)	80.15	-6.00	3312873.942	1386265.266
XTREME 22 (17KB) (RKB) to Mud line (At Slot: SLOT#05 NORTH PLATTE O34-K31-13HNB (699'FSL & 440'FEL, SEC.13))			4614ft	
Mean Sea Level to Mud line (At Slot: SLOT#05 NORTH PLATTE O34-K31-13HNB (699'FSL & 440'FEL, SEC.13))			0ft	
XTREME 22 (17KB) (RKB) to Mean Sea Level			4614ft	



Well Profile Data

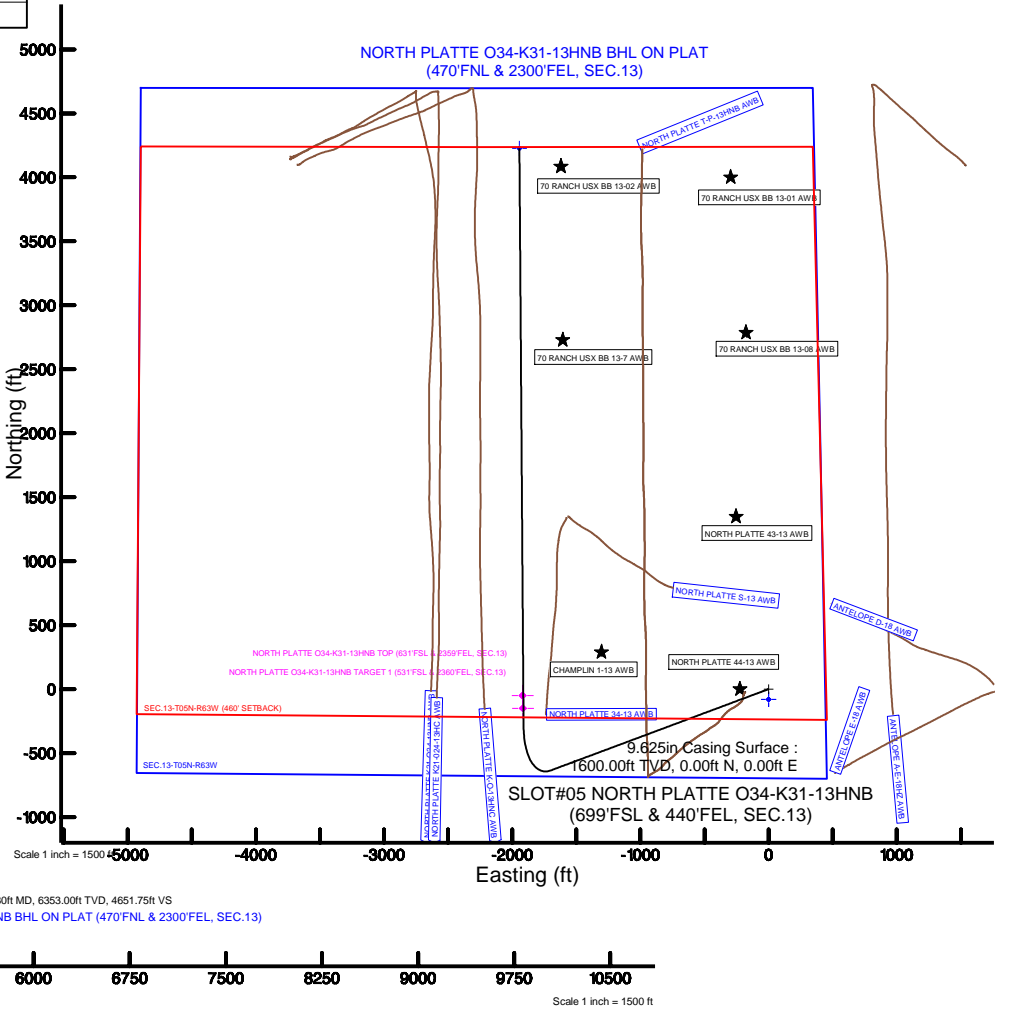
Design Comment	MD (ft)	Inc (°)	Az (°)	TVD (ft)	Local N (ft)	Local E (ft)	DLS (°/100ft)	VS (ft)
Tie On	17.00	0.000	249.500	17.00	0.00	0.00	0.00	0.00
End of Tangent	1800.00	0.000	249.500	1800.00	0.00	0.00	0.00	0.00
End of Build	3280.00	29.600	249.500	3215.04	-130.93	-350.19	2.00	27.39
End of Tangent	6195.00	29.600	249.500	5749.62	-635.17	-1698.85	0.00	132.88
End of 3D Arc	6941.10	70.000	359.590	6298.86	-287.60	-1911.65	11.00	537.58
End of Tangent	7011.10	70.000	359.590	6322.80	-221.82	-1912.12	0.00	597.54
End of 3D Arc	7193.06	90.016	359.590	6354.21	-43.53	-1913.39	11.00	760.05
End of Tangent	11462.80	90.016	359.590	6353.00	4226.10	-1943.93	0.00	4651.75

Survey Program

Start MD (ft)	End MD (ft)	Tool	Model	Log Name/Comment	Wellbore
17.00	11462.80	NavTrak	Custom NavTrak (MagCorr) (Rockies 0.03Gt model)		NORTH PLATTE O34-K31-13HNB PWB

Bottom Hole Location

MD (ft)	Inc (°)	Az (°)	TVD (ft)	Local N (ft)	Local E (ft)	Grid East (US ft)	Grid North (US ft)	Latitude	Longitude
11462.80	90.016	359.590	6353.00	4226.10	-1943.93	3310876.72	1392466.22	40°24'19.260"N	104°23'01.212"W





Planned Wellpath Report

NORTH PLATTE O34-K31-13HNB PWP (REV-A.0)
Page 1 of 6



REFERENCE WELLPATH IDENTIFICATION

Operator	BONANZA CREEK OIL COMPANY	Slot	SLOT#05 NORTH PLATTE O34-K31-13HNB (699'FSL & 440'FEL, SEC.13)
Area	COLORADO	Well	NORTH PLATTE O34-K31-13HNB
Field	WELD COUNTY	Wellbore	NORTH PLATTE O34-K31-13HNB PWB
Facility	SEC.13-T05N-R63W		

REPORT SETUP INFORMATION

Projection System	NAD83 / Lambert Colorado SP, Northern Zone (501), US feet	Software System	WellArchitect® 4.1.1
North Reference	True	User	Ingmjmr
Scale	0.99996	Report Generated	1/11/2016 at 11:59:07 AM
Convergence at slot	0.73° East	Database/Source file	WA_DEN_Denver_Defn/NORTH_PLATTE_O34-K31-13HNB_PWB.xml

WELLPATH LOCATION

	Local coordinates		Grid coordinates		Geographic coordinates	
	North[ft]	East[ft]	Easting[US ft]	Northing[US ft]	Latitude	Longitude
Slot Location	80.15	-0.00	3312873.94	1388265.27	40°23'37.500"N	104°22'36.084"W
Facility Reference Pt			3312874.96	1388185.13	40°23'36.708"N	104°22'36.084"W
Field Reference Pt			3335925.10	1457282.25	40°34'56.460"N	104°17'26.016"W

WELLPATH DATUM

Calculation method	Minimum curvature	XTREME 22 (17'KB) (RKB) to Facility Vertical Datum	4614.00ft
Horizontal Reference Pt	Slot	XTREME 22 (17'KB) (RKB) to Mean Sea Level	4614.00ft
Vertical Reference Pt	XTREME 22 (17'KB) (RKB)	XTREME 22 (17'KB) (RKB) to Mud Line at Slot (SLOT#05 NORTH PLATTE O34-K31-13HNB (699'FSL & 440'FEL, SEC.13))	4614.00ft
MD Reference Pt	XTREME 22 (17'KB) (RKB)	Section Origin	N 0.00, E 0.00 ft
Field Vertical Reference	Mean Sea Level	Section Azimuth	335.30°



Planned Wellpath Report

NORTH PLATTE O34-K31-13HNB PWP (REV-A.0)

Page 2 of 6



REFERENCE WELLPATH IDENTIFICATION

Operator	BONANZA CREEK OIL COMPANY	Slot	SLOT#05 NORTH PLATTE O34-K31-13HNB (699'FSL & 440'FEL, SEC.13)
Area	COLORADO	Well	NORTH PLATTE O34-K31-13HNB
Field	WELD COUNTY	Wellbore	NORTH PLATTE O34-K31-13HNB PWB
Facility	SEC.13-T05N-R63W		

WELLPATH DATA (129 stations) † = interpolated/extrapolated station

MD [ft]	Inclination [°]	Azimuth [°]	TVD [ft]	Vert Sect [ft]	North [ft]	East [ft]	DLS [°/100ft]	Comments
0.00†	0.000	249.500	0.00	0.00	0.00	0.00	0.00	
17.00	0.000	249.500	17.00	0.00	0.00	0.00	0.00	Tie On
117.00†	0.000	249.500	117.00	0.00	0.00	0.00	0.00	
217.00†	0.000	249.500	217.00	0.00	0.00	0.00	0.00	
317.00†	0.000	249.500	317.00	0.00	0.00	0.00	0.00	
417.00†	0.000	249.500	417.00	0.00	0.00	0.00	0.00	
517.00†	0.000	249.500	517.00	0.00	0.00	0.00	0.00	
617.00†	0.000	249.500	617.00	0.00	0.00	0.00	0.00	
717.00†	0.000	249.500	717.00	0.00	0.00	0.00	0.00	
817.00†	0.000	249.500	817.00	0.00	0.00	0.00	0.00	
917.00†	0.000	249.500	917.00	0.00	0.00	0.00	0.00	
1017.00†	0.000	249.500	1017.00	0.00	0.00	0.00	0.00	
1117.00†	0.000	249.500	1117.00	0.00	0.00	0.00	0.00	
1217.00†	0.000	249.500	1217.00	0.00	0.00	0.00	0.00	
1317.00†	0.000	249.500	1317.00	0.00	0.00	0.00	0.00	
1417.00†	0.000	249.500	1417.00	0.00	0.00	0.00	0.00	
1517.00†	0.000	249.500	1517.00	0.00	0.00	0.00	0.00	
1617.00†	0.000	249.500	1617.00	0.00	0.00	0.00	0.00	
1717.00†	0.000	249.500	1717.00	0.00	0.00	0.00	0.00	
1800.00	0.000	249.500	1800.00	0.00	0.00	0.00	0.00	End of Tangent
1817.00†	0.340	249.500	1817.00	0.00	-0.02	-0.05	2.00	
1917.00†	2.340	249.500	1916.97	0.18	-0.84	-2.24	2.00	
2017.00†	4.340	249.500	2016.79	0.60	-2.88	-7.69	2.00	
2117.00†	6.340	249.500	2116.35	1.28	-6.14	-16.41	2.00	
2217.00†	8.340	249.500	2215.53	2.22	-10.61	-28.38	2.00	
2317.00†	10.340	249.500	2314.20	3.41	-16.29	-43.58	2.00	
2417.00†	12.340	249.500	2412.24	4.85	-23.18	-61.99	2.00	
2517.00†	14.340	249.500	2509.54	6.54	-31.26	-83.61	2.00	
2617.00†	16.340	249.500	2605.97	8.48	-40.52	-108.38	2.00	
2717.00†	18.340	249.500	2701.42	10.66	-50.96	-136.30	2.00	
2817.00†	20.340	249.500	2795.77	13.09	-62.56	-167.32	2.00	
2917.00†	22.340	249.500	2888.91	15.75	-75.30	-201.40	2.00	
3017.00†	24.340	249.500	2980.72	18.66	-89.17	-238.51	2.00	
3117.00†	26.340	249.500	3071.10	21.79	-104.16	-278.60	2.00	
3217.00†	28.340	249.500	3159.92	25.16	-120.25	-321.61	2.00	
3280.00	29.600	249.500	3215.04	27.39	-130.93	-350.19	2.00	End of Build
3317.00†	29.600	249.500	3247.21	28.73	-137.33	-367.31	0.00	
3382.00†	29.600	249.500	3303.73	31.08	-148.58	-397.38	0.00	PARKMAN
3417.00†	29.600	249.500	3334.16	32.35	-154.63	-413.58	0.00	
3517.00†	29.600	249.500	3421.11	35.97	-171.93	-459.84	0.00	
3617.00†	29.600	249.500	3508.06	39.59	-189.23	-506.11	0.00	
3717.00†	29.600	249.500	3595.01	43.21	-206.53	-552.38	0.00	
3817.00†	29.600	249.500	3681.96	46.83	-223.82	-598.64	0.00	
3917.00†	29.600	249.500	3768.91	50.44	-241.12	-644.91	0.00	
4017.00†	29.600	249.500	3855.86	54.06	-258.42	-691.17	0.00	



Planned Wellpath Report

NORTH PLATTE O34-K31-13HNB PWP (REV-A.0)
Page 3 of 6



REFERENCE WELLPATH IDENTIFICATION

Operator	BONANZA CREEK OIL COMPANY	Slot	SLOT#05 NORTH PLATTE O34-K31-13HNB (699'FSL & 440'FEL, SEC.13)
Area	COLORADO	Well	NORTH PLATTE O34-K31-13HNB
Field	WELD COUNTY	Wellbore	NORTH PLATTE O34-K31-13HNB PWB
Facility	SEC.13-T05N-R63W		

WELLPATH DATA (129 stations) † = interpolated/extrapolated station

MD [ft]	Inclination [°]	Azimuth [°]	TVD [ft]	Vert Sect [ft]	North [ft]	East [ft]	DLS [°/100ft]	Comments
4117.00†	29.600	249.500	3942.81	57.68	-275.72	-737.44	0.00	
4217.00†	29.600	249.500	4029.76	61.30	-293.02	-783.71	0.00	
4317.00†	29.600	249.500	4116.71	64.92	-310.31	-829.97	0.00	
4417.00†	29.600	249.500	4203.65	68.54	-327.61	-876.24	0.00	
4517.00†	29.600	249.500	4290.60	72.16	-344.91	-922.51	0.00	
4617.00†	29.600	249.500	4377.55	75.78	-362.21	-968.77	0.00	
4717.00†	29.600	249.500	4464.50	79.40	-379.51	-1015.04	0.00	
4817.00†	29.600	249.500	4551.45	83.01	-396.81	-1061.30	0.00	
4917.00†	29.600	249.500	4638.40	86.63	-414.10	-1107.57	0.00	
5017.00†	29.600	249.500	4725.35	90.25	-431.40	-1153.84	0.00	
5117.00†	29.600	249.500	4812.30	93.87	-448.70	-1200.10	0.00	
5217.00†	29.600	249.500	4899.25	97.49	-466.00	-1246.37	0.00	
5317.00†	29.600	249.500	4986.20	101.11	-483.30	-1292.63	0.00	
5417.00†	29.600	249.500	5073.15	104.73	-500.59	-1338.90	0.00	
5517.00†	29.600	249.500	5160.10	108.35	-517.89	-1385.17	0.00	
5617.00†	29.600	249.500	5247.05	111.97	-535.19	-1431.43	0.00	
5717.00†	29.600	249.500	5334.00	115.58	-552.49	-1477.70	0.00	
5817.00†	29.600	249.500	5420.95	119.20	-569.79	-1523.97	0.00	
5917.00†	29.600	249.500	5507.90	122.82	-587.09	-1570.23	0.00	
6017.00†	29.600	249.500	5594.85	126.44	-604.38	-1616.50	0.00	
6117.00†	29.600	249.500	5681.80	130.06	-621.68	-1662.76	0.00	
6145.00†	29.600	249.500	5706.14	131.07	-626.53	-1675.72	0.00	SHARON SPRINGS
6179.00†	29.600	249.500	5735.71	132.30	-632.41	-1691.45	0.00	SHARON SPRINGS "A"
6195.00	29.600	249.500	5749.62	132.88	-635.17	-1698.85	0.00	End of Tangent
6217.00†	28.576	254.011	5768.84	134.08	-638.53	-1709.00	11.00	SHARON SPRINGS "B"
6253.00†	27.249	261.989	5800.67	137.75	-642.05	-1725.44	11.00	NIOBRARA "A" CHALK
6267.00†	26.862	265.267	5813.14	139.75	-642.76	-1731.77	11.00	NIOBRARA "A" MARL
6317.00†	26.131	277.505	5857.92	149.49	-642.25	-1753.96	11.00	
6329.00†	26.113	280.503	5868.69	152.42	-641.42	-1759.18	11.00	NIOBRARA "B" CHALK
6417.00†	27.822	301.619	5947.30	180.74	-627.09	-1795.79	11.00	
6517.00†	33.016	320.902	6033.71	226.69	-593.61	-1832.96	11.00	
6617.00†	40.375	334.666	6113.98	285.64	-543.04	-1864.10	11.00	
6717.00†	48.918	344.570	6185.14	355.44	-477.23	-1888.06	11.00	
6817.00†	58.109	352.110	6244.60	433.51	-398.61	-1903.96	11.00	
6917.00†	67.663	358.248	6290.16	517.00	-310.06	-1911.23	11.00	
6941.10	70.000	359.590	6298.86	537.58	-287.60	-1911.65	11.00	End of 3D Arc
7011.10	70.000	359.590	6322.80	597.54	-221.82	-1912.12	0.00	End of Tangent
7017.00†	70.649	359.590	6324.79	602.60	-216.26	-1912.16	11.00	
7117.00†	81.649	359.590	6348.69	690.96	-119.32	-1912.85	11.00	
7193.06	90.016	359.590	6354.21	760.05	-43.53	-1913.39	11.00	End of 3D Arc
7217.00†	90.016	359.590	6354.21	781.86	-19.59	-1913.57	0.00	
7317.00†	90.016	359.590	6354.18	873.01	80.40	-1914.28	0.00	
7417.00†	90.016	359.590	6354.15	964.16	180.40	-1915.00	0.00	
7517.00†	90.016	359.590	6354.12	1055.30	280.40	-1915.71	0.00	
7617.00†	90.016	359.590	6354.09	1146.45	380.40	-1916.43	0.00	



Planned Wellpath Report

NORTH PLATTE O34-K31-13HNB PWP (REV-A.0)
Page 4 of 6



REFERENCE WELLPATH IDENTIFICATION

Operator	BONANZA CREEK OIL COMPANY	Slot	SLOT#05 NORTH PLATTE O34-K31-13HNB (699'FSL & 440'FEL, SEC.13)
Area	COLORADO	Well	NORTH PLATTE O34-K31-13HNB
Field	WELD COUNTY	Wellbore	NORTH PLATTE O34-K31-13HNB PWB
Facility	SEC.13-T05N-R63W		

WELLPATH DATA (129 stations) † = interpolated/extrapolated station

MD [ft]	Inclination [°]	Azimuth [°]	TVD [ft]	Vert Sect [ft]	North [ft]	East [ft]	DLS [°/100ft]	Comments
7717.00†	90.016	359.590	6354.06	1237.60	480.39	-1917.14	0.00	
7817.00†	90.016	359.590	6354.04	1328.74	580.39	-1917.86	0.00	
7917.00†	90.016	359.590	6354.01	1419.89	680.39	-1918.57	0.00	
8017.00†	90.016	359.590	6353.98	1511.03	780.39	-1919.29	0.00	
8117.00†	90.016	359.590	6353.95	1602.18	880.38	-1920.00	0.00	
8217.00†	90.016	359.590	6353.92	1693.33	980.38	-1920.72	0.00	
8317.00†	90.016	359.590	6353.89	1784.47	1080.38	-1921.43	0.00	
8417.00†	90.016	359.590	6353.86	1875.62	1180.38	-1922.15	0.00	
8517.00†	90.016	359.590	6353.84	1966.77	1280.37	-1922.86	0.00	
8617.00†	90.016	359.590	6353.81	2057.91	1380.37	-1923.58	0.00	
8717.00†	90.016	359.590	6353.78	2149.06	1480.37	-1924.29	0.00	
8817.00†	90.016	359.590	6353.75	2240.20	1580.37	-1925.01	0.00	
8917.00†	90.016	359.590	6353.72	2331.35	1680.36	-1925.72	0.00	
9017.00†	90.016	359.590	6353.69	2422.50	1780.36	-1926.44	0.00	
9117.00†	90.016	359.590	6353.67	2513.64	1880.36	-1927.15	0.00	
9217.00†	90.016	359.590	6353.64	2604.79	1980.36	-1927.87	0.00	
9317.00†	90.016	359.590	6353.61	2695.93	2080.35	-1928.58	0.00	
9417.00†	90.016	359.590	6353.58	2787.08	2180.35	-1929.30	0.00	
9517.00†	90.016	359.590	6353.55	2878.23	2280.35	-1930.01	0.00	
9617.00†	90.016	359.590	6353.52	2969.37	2380.35	-1930.73	0.00	
9717.00†	90.016	359.590	6353.50	3060.52	2480.34	-1931.45	0.00	
9817.00†	90.016	359.590	6353.47	3151.67	2580.34	-1932.16	0.00	
9917.00†	90.016	359.590	6353.44	3242.81	2680.34	-1932.88	0.00	
10017.00†	90.016	359.590	6353.41	3333.96	2780.34	-1933.59	0.00	
10117.00†	90.016	359.590	6353.38	3425.10	2880.33	-1934.31	0.00	
10217.00†	90.016	359.590	6353.35	3516.25	2980.33	-1935.02	0.00	
10317.00†	90.016	359.590	6353.33	3607.40	3080.33	-1935.74	0.00	
10417.00†	90.016	359.590	6353.30	3698.54	3180.33	-1936.45	0.00	
10517.00†	90.016	359.590	6353.27	3789.69	3280.32	-1937.17	0.00	
10617.00†	90.016	359.590	6353.24	3880.84	3380.32	-1937.88	0.00	
10717.00†	90.016	359.590	6353.21	3971.98	3480.32	-1938.60	0.00	
10817.00†	90.016	359.590	6353.18	4063.13	3580.32	-1939.31	0.00	
10917.00†	90.016	359.590	6353.15	4154.27	3680.31	-1940.03	0.00	
11017.00†	90.016	359.590	6353.13	4245.42	3780.31	-1940.74	0.00	
11117.00†	90.016	359.590	6353.10	4336.57	3880.31	-1941.46	0.00	
11217.00†	90.016	359.590	6353.07	4427.71	3980.30	-1942.17	0.00	
11317.00†	90.016	359.590	6353.04	4518.86	4080.30	-1942.89	0.00	
11417.00†	90.016	359.590	6353.01	4610.00	4180.30	-1943.60	0.00	
11462.80	90.016	359.590	6353.00†	4651.75	4226.10	-1943.93	0.00	End of Tangent



Planned Wellpath Report

NORTH PLATTE O34-K31-13HNB PWP (REV-A.0)
Page 5 of 6



REFERENCE WELLPATH IDENTIFICATION

Operator	BONANZA CREEK OIL COMPANY	Slot	SLOT#05 NORTH PLATTE O34-K31-13HNB (699'FSL & 440'FEL, SEC.13)
Area	COLORADO	Well	NORTH PLATTE O34-K31-13HNB
Field	WELD COUNTY	Wellbore	NORTH PLATTE O34-K31-13HNB PWB
Facility	SEC.13-T05N-R63W		

HOLE & CASING SECTIONS -

Ref Wellbore: NORTH PLATTE O34-K31-13HNB PWB Ref Wellpath: NORTH PLATTE O34-K31-13HNB PWP (REV-A.0)

String/Diameter	Start MD [ft]	End MD [ft]	Interval [ft]	Start TVD [ft]	End TVD [ft]	Start N/S [ft]	Start E/W [ft]	End N/S [ft]	End E/W [ft]
13.5in Open Hole	17.00	1600.00	1583.00	17.00	1600.00	0.00	0.00	0.00	0.00
9.625in Casing Surface	17.00	1600.00	1583.00	17.00	1600.00	0.00	0.00	0.00	0.00
8.75in Open Hole	1600.00	11462.80	9862.80	1600.00	N/A	0.00	0.00	N/A	N/A
5.5in Casing Production	17.00	11462.80	11445.80	17.00	N/A	0.00	0.00	N/A	N/A

TARGETS

Name	MD [ft]	TVD [ft]	North [ft]	East [ft]	Grid East [US ft]	Grid North [US ft]	Latitude	Longitude	Shape
SEC.13-T05N-R63W		0.00	-80.15	0.00	3312874.96	1388185.13	40°23'36.708"N	104°22'36.084"W	polygon
1) NORTH PLATTE O34-K31-13HNB BHL ON PLAT (470'FNL & 2300'FEL, SEC.13)	11462.80	6353.00	4226.10	-1943.93	3310876.72	1392466.22	40°24'19.260"N	104°23'01.212"W	point
NORTH PLATTE O34-K31-13HNB TARGET 1 (531'FSL & 2360'FEL, SEC.13)		6353.00	-149.29	-1916.42	3310959.65	1388091.72	40°23'36.024"N	104°23'00.852"W	point
NORTH PLATTE O34-K31-13HNB TOP (631'FSL & 2359'FEL, SEC.13)		6353.00	-50.93	-1919.20	3310955.62	1388190.03	40°23'36.996"N	104°23'00.888"W	point
SEC.13-T05N-R63W (460' SETBACK)		6514.00	-80.15	0.00	3312874.96	1388185.13	40°23'36.708"N	104°22'36.084"W	polygon

SURVEY PROGRAM -

Ref Wellbore: NORTH PLATTE O34-K31-13HNB PWB Ref Wellpath: NORTH PLATTE O34-K31-13HNB PWP (REV-A.0)

Start MD [ft]	End MD [ft]	Positional Uncertainty Model	Log Name/Comment	Wellbore
17.00	11462.80	Custom NaviTrak (MagCorr) (Rockies 0.03Gt model)		NORTH PLATTE O34-K31-13HNB PWB



Planned Wellpath Report

NORTH PLATTE O34-K31-13HNB PWP (REV-A.0)
Page 6 of 6



REFERENCE WELLPATH IDENTIFICATION

Operator	BONANZA CREEK OIL COMPANY	Slot	SLOT#05 NORTH PLATTE O34-K31-13HNB (699'FSL & 440'FEL, SEC.13)
Area	COLORADO	Well	NORTH PLATTE O34-K31-13HNB
Field	WELD COUNTY	Wellbore	NORTH PLATTE O34-K31-13HNB PWB
Facility	SEC.13-T05N-R63W		

WELLPATH COMMENTS

MD [ft]	Inclination [°]	Azimuth [°]	TVD [ft]	Comment
3382.00	29.600	249.500	3303.73	PARKMAN
6145.00	29.600	249.500	5706.14	SHARON SPRINGS
6179.00	29.600	249.500	5735.71	SHARON SPRINGS "A"
6217.00	28.576	254.011	5768.84	SHARON SPRINGS "B"
6253.00	27.249	261.989	5800.67	NIOBRARA "A" CHALK
6267.00	26.862	265.267	5813.14	NIOBRARA "A" MARL
6329.00	26.113	280.503	5868.69	NIOBRARA "B" CHALK

DESIGN COMMENTS

MD [ft]	Inclination [°]	Azimuth [°]	TVD [ft]	Comment
17.00	0.000	249.500	17.00	Tie On
1800.00	0.000	249.500	1800.00	End of Tangent
3280.00	29.600	249.500	3215.04	End of Build
6195.00	29.600	249.500	5749.62	End of Tangent
6941.10	70.000	359.590	6298.86	End of 3D Arc
7011.10	70.000	359.590	6322.80	End of Tangent
7193.06	90.016	359.590	6354.21	End of 3D Arc
11462.80	90.016	359.590	6353.00	End of Tangent