

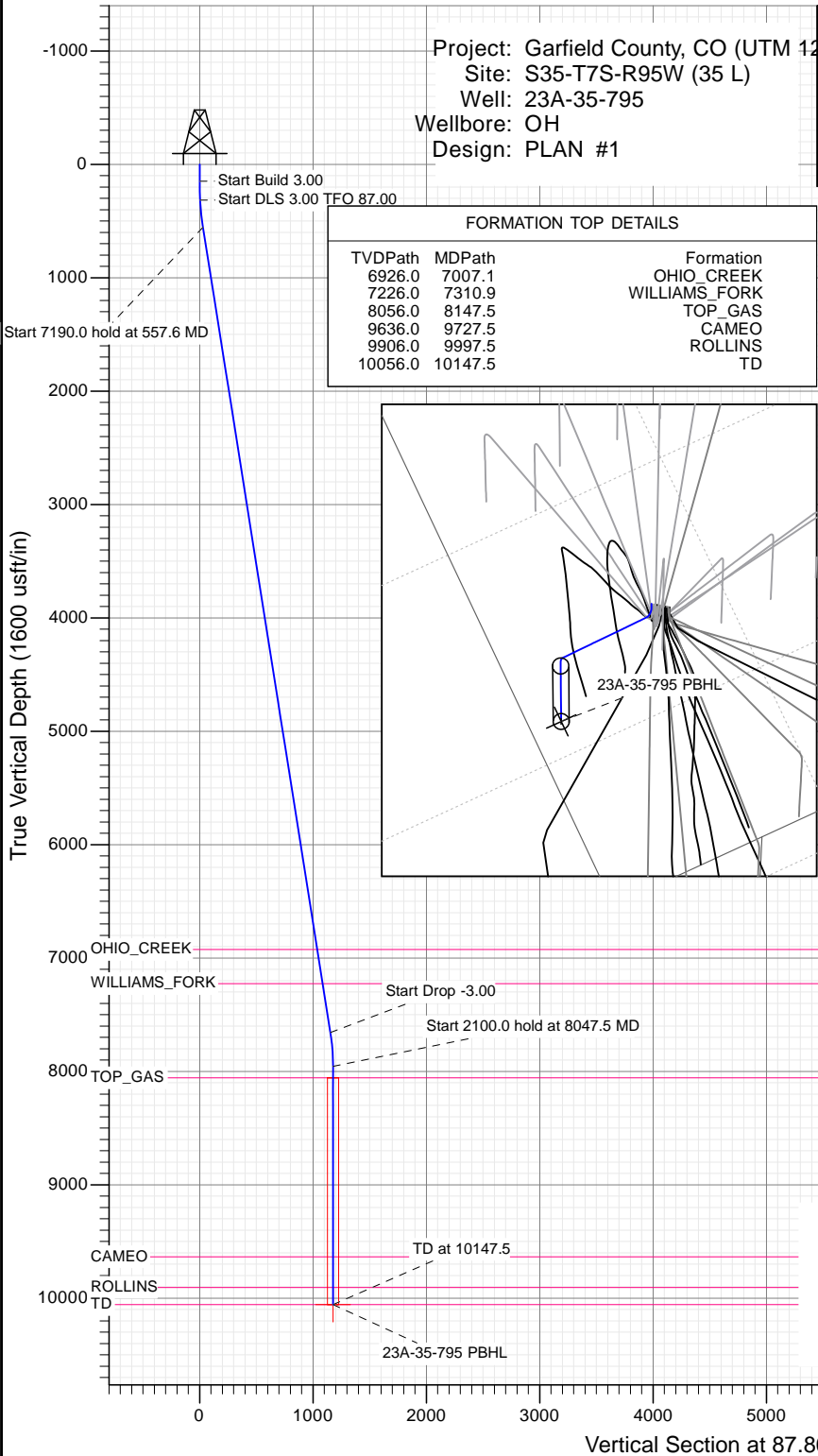


# SECTION DETAILS

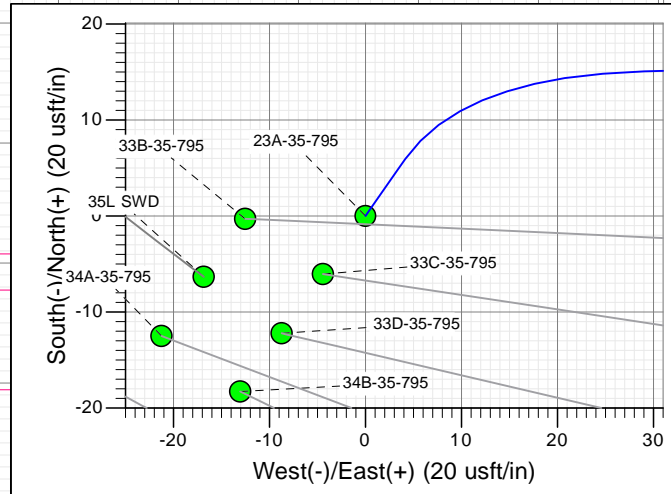
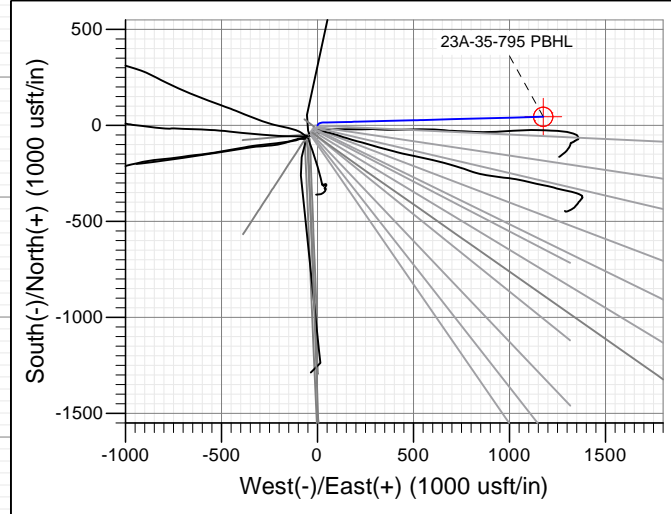
Sec	MD	Inc	Azi	TVD	+N/-S	+E/-W	Dleg	TFace	VSect	Target
1	0.0	0.00	0.00	0.0	0.0	0.0	0.00	0.00	0.0	
2	150.0	0.00	0.00	150.0	0.0	0.0	0.00	0.00	0.0	
3	316.7	5.00	35.00	316.5	6.0	4.2	3.00	35.00	4.4	
4	557.6	8.99	88.49	555.8	15.1	29.1	3.00	87.00	29.6	
5	7747.7	8.99	88.49	7657.4	44.6	1152.8	0.00	0.00	1153.7	
6	8047.5	0.00	0.00	7956.0	45.2	1176.3	3.00	180.00	1177.2	
7	10147.5	0.00	0.00	10056.0	45.2	1176.3	0.00	0.00	1177.2	23A-35-795 PBHL

Project: Garfield County, CO (UTM 12  
Site: S35-T7S-R95W (35 L)  
Well: 23A-35-795  
Wellbore: OH  
Design: PLAN #1

Type	Target	Azimuth	Origin Type	N/S	E/W	From TVD
TD	No Target (Freehand)	87.80	Slot	0.0	0.0	0.0
Name		TVD	+N/-S	+E/-W	Latitude	Longitude
23A-35-795 PBHL		10056.0	45.2	1176.3	39.392699	-107.967055



FORMATION TOP DETAILS		
TVDPATH	MDPATH	FORMATION
6926.0	7007.1	OHIO_CREEK
7226.0	7310.9	WILLIAMS_FORK
8056.0	8147.5	TOP_GAS
9636.0	9727.5	CAMEO
9906.0	9997.5	ROLLINS
10056.0	10147.5	TD



T M  
 Azimuths to True North  
 Magnetic North: 9.45°  
 Magnetic Field  
 Strength: 51888.8snT  
 Dip Angle: 65.60°  
 Date: 12/9/2015  
 Model: HDGM

## CASING DETAILS

No casing data is available

## WELL DETAILS: 23A-35-795

+N/-S	+E/-W	Northing	Easting	Latitude	Longitude
0.0	0.0	14319234.30	2496199.00	39.392575	-107.971215



## Planning Report

<b>Database:</b>	USA EDM 5000 Multi Users DB	<b>Local Co-ordinate Reference:</b>	Well 23A-35-795
<b>Company:</b>	Caerus Oil & Gas	<b>TVD Reference:</b>	30' KB @ 9236.0usft (H&P 330)
<b>Project:</b>	Garfield County, CO (UTM 12N)	<b>MD Reference:</b>	30' KB @ 9236.0usft (H&P 330)
<b>Site:</b>	S35-T7S-R95W (35 L)	<b>North Reference:</b>	True
<b>Well:</b>	23A-35-795	<b>Survey Calculation Method:</b>	Minimum Curvature
<b>Wellbore:</b>	OH		
<b>Design:</b>	PLAN #1		

<b>Project</b>	Garfield County, CO (UTM 12N)		
<b>Map System:</b>	Universal Transverse Mercator (US Survey Feet)	<b>System Datum:</b>	Mean Sea Level
<b>Geo Datum:</b>	NAD 1927 - Western US		
<b>Map Zone:</b>	Zone 12N (114 W to 108 W)		

Site		S35-T7S-R95W (35 L)			
Site Position:		Northing:	14,319,233.60 usft	Latitude:	39.392574
From:	Map	Easting:	2,496,186.50 usft	Longitude:	-107.971259
Position Uncertainty:	0.0 usft	Slot Radius:	13-3/16 "	Grid Convergence:	1.92 °

Well	23A-35-795					
Well Position	+N/-S	0.0 usft	Northing:	14,319,234.30 usft	Latitude:	39.392575
	+E/-W	0.0 usft	Easting:	2,496,199.00 usft	Longitude:	-107.971215
Position Uncertainty		0.0 usft	Wellhead Elevation:	0.0 usft	Ground Level:	9,206.0 usft

<b>Wellbore</b>	OH				
<b>Magnetics</b>	<b>Model Name</b>	<b>Sample Date</b>	<b>Declination (°)</b>	<b>Dip Angle (°)</b>	<b>Field Strength (nT)</b>
	HDGM	12/9/2015	9.45	65.60	51,889

<b>Design</b>	PLAN #1			
<b>Audit Notes:</b>				
<b>Version:</b>	<b>Phase:</b>	PLAN	<b>Tie On Depth:</b>	0.0
<b>Vertical Section:</b>	<b>Depth From (TVD) (usft)</b>	<b>+N/-S (usft)</b>	<b>+E/-W (usft)</b>	<b>Direction (°)</b>
	0.0	0.0	0.0	87.80

<b>Plan Sections</b>										
Measured Depth (usft)	Inclination (°)	Azimuth (°)	Vertical Depth (usft)	+N/-S (usft)	+E/-W (usft)	Dogleg Rate (°/100usft)	Build Rate (°/100usft)	Turn Rate (°/100usft)	TFO (°)	Target
0.0	0.00	0.00	0.0	0.0	0.0	0.00	0.00	0.00	0.00	
150.0	0.00	0.00	150.0	0.0	0.0	0.00	0.00	0.00	0.00	
316.7	5.00	35.00	316.5	6.0	4.2	3.00	3.00	0.00	35.00	
557.6	8.99	88.49	555.8	15.1	29.1	3.00	1.66	22.20	87.00	
7,747.7	8.99	88.49	7,657.4	44.6	1,152.8	0.00	0.00	0.00	0.00	
8,047.5	0.00	0.00	7,956.0	45.2	1,176.3	3.00	-3.00	0.00	180.00	
10,147.5	0.00	0.00	10,056.0	45.2	1,176.3	0.00	0.00	0.00	0.00	23A-35-795 PBHL

# Planning Report

<b>Database:</b>	USA EDM 5000 Multi Users DB	<b>Local Co-ordinate Reference:</b>	Well 23A-35-795
<b>Company:</b>	Caerus Oil & Gas	<b>TVD Reference:</b>	30' KB @ 9236.0usft (H&P 330)
<b>Project:</b>	Garfield County, CO (UTM 12N)	<b>MD Reference:</b>	30' KB @ 9236.0usft (H&P 330)
<b>Site:</b>	S35-T7S-R95W (35 L)	<b>North Reference:</b>	True
<b>Well:</b>	23A-35-795	<b>Survey Calculation Method:</b>	Minimum Curvature
<b>Wellbore:</b>	OH		
<b>Design:</b>	PLAN #1		

## Planned Survey

Measured Depth (usft)	Inclination (°)	Azimuth (°)	Vertical Depth (usft)	+N/-S (usft)	+E/-W (usft)	Vertical Section (usft)	Dogleg Rate (°/100usft)	Build Rate (°/100u)	Comments / Formations
0.0	0.00	0.00	0.0	0.0	0.0	0.0	0.00	0.00	
100.0	0.00	0.00	100.0	0.0	0.0	0.0	0.00	0.00	
150.0	0.00	0.00	150.0	0.0	0.0	0.0	0.00	0.00	Start Build 3.00
200.0	1.50	35.00	200.0	0.5	0.4	0.4	3.00	3.00	
300.0	4.50	35.00	299.8	4.8	3.4	3.6	3.00	3.00	
316.7	5.00	35.00	316.5	6.0	4.2	4.4	3.00	3.00	Start DLS 3.00 TFO 87.00
400.0	5.70	60.99	399.4	10.9	9.9	10.3	3.00	0.85	
500.0	7.62	81.21	498.8	14.4	20.8	21.3	3.00	1.91	
557.6	8.99	88.49	555.8	15.1	29.1	29.6	3.00	2.39	Start 7190.0 hold at 557.6 MD
600.0	8.99	88.49	597.6	15.2	35.7	36.2	0.00	0.00	
700.0	8.99	88.49	696.4	15.6	51.3	51.9	0.00	0.00	
800.0	8.99	88.49	795.2	16.1	66.9	67.5	0.00	0.00	
900.0	8.99	88.49	894.0	16.5	82.6	83.1	0.00	0.00	
1,000.0	8.99	88.49	992.7	16.9	98.2	98.8	0.00	0.00	
1,100.0	8.99	88.49	1,091.5	17.3	113.8	114.4	0.00	0.00	
1,200.0	8.99	88.49	1,190.3	17.7	129.5	130.0	0.00	0.00	
1,300.0	8.99	88.49	1,289.0	18.1	145.1	145.7	0.00	0.00	
1,400.0	8.99	88.49	1,387.8	18.5	160.7	161.3	0.00	0.00	
1,500.0	8.99	88.49	1,486.6	18.9	176.3	176.9	0.00	0.00	
1,600.0	8.99	88.49	1,585.3	19.3	192.0	192.6	0.00	0.00	
1,700.0	8.99	88.49	1,684.1	19.8	207.6	208.2	0.00	0.00	
1,800.0	8.99	88.49	1,782.9	20.2	223.2	223.8	0.00	0.00	
1,900.0	8.99	88.49	1,881.7	20.6	238.9	239.5	0.00	0.00	
2,000.0	8.99	88.49	1,980.4	21.0	254.5	255.1	0.00	0.00	
2,100.0	8.99	88.49	2,079.2	21.4	270.1	270.7	0.00	0.00	
2,200.0	8.99	88.49	2,178.0	21.8	285.7	286.4	0.00	0.00	
2,300.0	8.99	88.49	2,276.7	22.2	301.4	302.0	0.00	0.00	
2,400.0	8.99	88.49	2,375.5	22.6	317.0	317.6	0.00	0.00	
2,500.0	8.99	88.49	2,474.3	23.1	332.6	333.3	0.00	0.00	
2,600.0	8.99	88.49	2,573.0	23.5	348.3	348.9	0.00	0.00	
2,700.0	8.99	88.49	2,671.8	23.9	363.9	364.5	0.00	0.00	
2,800.0	8.99	88.49	2,770.6	24.3	379.5	380.2	0.00	0.00	
2,900.0	8.99	88.49	2,869.4	24.7	395.1	395.8	0.00	0.00	
3,000.0	8.99	88.49	2,968.1	25.1	410.8	411.4	0.00	0.00	
3,100.0	8.99	88.49	3,066.9	25.5	426.4	427.1	0.00	0.00	
3,200.0	8.99	88.49	3,165.7	25.9	442.0	442.7	0.00	0.00	
3,300.0	8.99	88.49	3,264.4	26.3	457.7	458.3	0.00	0.00	
3,400.0	8.99	88.49	3,363.2	26.8	473.3	474.0	0.00	0.00	
3,500.0	8.99	88.49	3,462.0	27.2	488.9	489.6	0.00	0.00	
3,600.0	8.99	88.49	3,560.8	27.6	504.6	505.2	0.00	0.00	
3,700.0	8.99	88.49	3,659.5	28.0	520.2	520.9	0.00	0.00	
3,800.0	8.99	88.49	3,758.3	28.4	535.8	536.5	0.00	0.00	
3,900.0	8.99	88.49	3,857.1	28.8	551.4	552.1	0.00	0.00	
4,000.0	8.99	88.49	3,955.8	29.2	567.1	567.8	0.00	0.00	
4,100.0	8.99	88.49	4,054.6	29.6	582.7	583.4	0.00	0.00	
4,200.0	8.99	88.49	4,153.4	30.0	598.3	599.0	0.00	0.00	
4,300.0	8.99	88.49	4,252.1	30.5	614.0	614.7	0.00	0.00	
4,400.0	8.99	88.49	4,350.9	30.9	629.6	630.3	0.00	0.00	
4,500.0	8.99	88.49	4,449.7	31.3	645.2	645.9	0.00	0.00	
4,600.0	8.99	88.49	4,548.5	31.7	660.8	661.6	0.00	0.00	
4,700.0	8.99	88.49	4,647.2	32.1	676.5	677.2	0.00	0.00	
4,800.0	8.99	88.49	4,746.0	32.5	692.1	692.8	0.00	0.00	

# Planning Report

<b>Database:</b>	USA EDM 5000 Multi Users DB	<b>Local Co-ordinate Reference:</b>	Well 23A-35-795
<b>Company:</b>	Caerus Oil & Gas	<b>TVD Reference:</b>	30' KB @ 9236.0usft (H&P 330)
<b>Project:</b>	Garfield County, CO (UTM 12N)	<b>MD Reference:</b>	30' KB @ 9236.0usft (H&P 330)
<b>Site:</b>	S35-T7S-R95W (35 L)	<b>North Reference:</b>	True
<b>Well:</b>	23A-35-795	<b>Survey Calculation Method:</b>	Minimum Curvature
<b>Wellbore:</b>	OH		
<b>Design:</b>	PLAN #1		

Planned Survey									
Measured Depth (usft)	Inclination (°)	Azimuth (°)	Vertical Depth (usft)	+N/-S (usft)	+E/-W (usft)	Vertical Section (usft)	Dogleg Rate (°/100usft)	Build Rate (°/100u)	Comments / Formations
4,900.0	8.99	88.49	4,844.8	32.9	707.7	708.5	0.00	0.00	
5,000.0	8.99	88.49	4,943.5	33.3	723.4	724.1	0.00	0.00	
5,100.0	8.99	88.49	5,042.3	33.7	739.0	739.7	0.00	0.00	
5,200.0	8.99	88.49	5,141.1	34.2	754.6	755.4	0.00	0.00	
5,300.0	8.99	88.49	5,239.8	34.6	770.3	771.0	0.00	0.00	
5,400.0	8.99	88.49	5,338.6	35.0	785.9	786.6	0.00	0.00	
5,500.0	8.99	88.49	5,437.4	35.4	801.5	802.3	0.00	0.00	
5,600.0	8.99	88.49	5,536.2	35.8	817.1	817.9	0.00	0.00	
5,700.0	8.99	88.49	5,634.9	36.2	832.8	833.5	0.00	0.00	
5,800.0	8.99	88.49	5,733.7	36.6	848.4	849.2	0.00	0.00	
5,900.0	8.99	88.49	5,832.5	37.0	864.0	864.8	0.00	0.00	
6,000.0	8.99	88.49	5,931.2	37.4	879.7	880.4	0.00	0.00	
6,100.0	8.99	88.49	6,030.0	37.9	895.3	896.1	0.00	0.00	
6,200.0	8.99	88.49	6,128.8	38.3	910.9	911.7	0.00	0.00	
6,300.0	8.99	88.49	6,227.5	38.7	926.5	927.3	0.00	0.00	
6,400.0	8.99	88.49	6,326.3	39.1	942.2	943.0	0.00	0.00	
6,500.0	8.99	88.49	6,425.1	39.5	957.8	958.6	0.00	0.00	
6,600.0	8.99	88.49	6,523.9	39.9	973.4	974.2	0.00	0.00	
6,700.0	8.99	88.49	6,622.6	40.3	989.1	989.9	0.00	0.00	
6,800.0	8.99	88.49	6,721.4	40.7	1,004.7	1,005.5	0.00	0.00	
6,900.0	8.99	88.49	6,820.2	41.1	1,020.3	1,021.1	0.00	0.00	
7,000.0	8.99	88.49	6,918.9	41.6	1,035.9	1,036.8	0.00	0.00	
7,007.1	8.99	88.49	6,926.0	41.6	1,037.1	1,037.9	0.00	0.00	OHIO_CREEK
7,100.0	8.99	88.49	7,017.7	42.0	1,051.6	1,052.4	0.00	0.00	
7,200.0	8.99	88.49	7,116.5	42.4	1,067.2	1,068.0	0.00	0.00	
7,300.0	8.99	88.49	7,215.2	42.8	1,082.8	1,083.7	0.00	0.00	
7,310.9	8.99	88.49	7,226.0	42.8	1,084.5	1,085.4	0.00	0.00	WILLIAMS_FORK
7,400.0	8.99	88.49	7,314.0	43.2	1,098.5	1,099.3	0.00	0.00	
7,500.0	8.99	88.49	7,412.8	43.6	1,114.1	1,114.9	0.00	0.00	
7,600.0	8.99	88.49	7,511.6	44.0	1,129.7	1,130.6	0.00	0.00	
7,700.0	8.99	88.49	7,610.3	44.4	1,145.4	1,146.2	0.00	0.00	
7,747.7	8.99	88.49	7,657.4	44.6	1,152.8	1,153.7	0.00	0.00	Start Drop -3.00
7,800.0	7.42	88.49	7,709.2	44.8	1,160.3	1,161.1	3.00	-3.00	
7,900.0	4.42	88.49	7,808.7	45.1	1,170.6	1,171.5	3.00	-3.00	
8,000.0	1.42	88.49	7,908.5	45.2	1,175.7	1,176.6	3.00	-3.00	
8,047.5	0.00	0.00	7,956.0	45.2	1,176.3	1,177.2	3.00	-3.00	Start 2100.0 hold at 8047.5 MD
8,100.0	0.00	0.00	8,008.5	45.2	1,176.3	1,177.2	0.00	0.00	
8,147.5	0.00	0.00	8,056.0	45.2	1,176.3	1,177.2	0.00	0.00	TOP_GAS
8,200.0	0.00	0.00	8,108.5	45.2	1,176.3	1,177.2	0.00	0.00	
8,300.0	0.00	0.00	8,208.5	45.2	1,176.3	1,177.2	0.00	0.00	
8,400.0	0.00	0.00	8,308.5	45.2	1,176.3	1,177.2	0.00	0.00	
8,500.0	0.00	0.00	8,408.5	45.2	1,176.3	1,177.2	0.00	0.00	
8,600.0	0.00	0.00	8,508.5	45.2	1,176.3	1,177.2	0.00	0.00	
8,700.0	0.00	0.00	8,608.5	45.2	1,176.3	1,177.2	0.00	0.00	
8,800.0	0.00	0.00	8,708.5	45.2	1,176.3	1,177.2	0.00	0.00	
8,900.0	0.00	0.00	8,808.5	45.2	1,176.3	1,177.2	0.00	0.00	
9,000.0	0.00	0.00	8,908.5	45.2	1,176.3	1,177.2	0.00	0.00	
9,100.0	0.00	0.00	9,008.5	45.2	1,176.3	1,177.2	0.00	0.00	
9,200.0	0.00	0.00	9,108.5	45.2	1,176.3	1,177.2	0.00	0.00	
9,300.0	0.00	0.00	9,208.5	45.2	1,176.3	1,177.2	0.00	0.00	
9,400.0	0.00	0.00	9,308.5	45.2	1,176.3	1,177.2	0.00	0.00	
9,500.0	0.00	0.00	9,408.5	45.2	1,176.3	1,177.2	0.00	0.00	

## Planning Report

<b>Database:</b>	USA EDM 5000 Multi Users DB	<b>Local Co-ordinate Reference:</b>	Well 23A-35-795
<b>Company:</b>	Caerus Oil & Gas	<b>TVD Reference:</b>	30' KB @ 9236.0usft (H&P 330)
<b>Project:</b>	Garfield County, CO (UTM 12N)	<b>MD Reference:</b>	30' KB @ 9236.0usft (H&P 330)
<b>Site:</b>	S35-T7S-R95W (35 L)	<b>North Reference:</b>	True
<b>Well:</b>	23A-35-795	<b>Survey Calculation Method:</b>	Minimum Curvature
<b>Wellbore:</b>	OH		
<b>Design:</b>	PLAN #1		

Planned Survey									
Measured Depth (usft)	Inclination (°)	Azimuth (°)	Vertical Depth (usft)	+N/-S (usft)	+E/-W (usft)	Vertical Section (usft)	Dogleg Rate (°/100usft)	Build Rate (°/100u)	Comments / Formations
9,600.0	0.00	0.00	9,508.5	45.2	1,176.3	1,177.2	0.00	0.00	
9,700.0	0.00	0.00	9,608.5	45.2	1,176.3	1,177.2	0.00	0.00	
9,727.5	0.00	0.00	9,636.0	45.2	1,176.3	1,177.2	0.00	0.00	CAMEO
9,800.0	0.00	0.00	9,708.5	45.2	1,176.3	1,177.2	0.00	0.00	
9,900.0	0.00	0.00	9,808.5	45.2	1,176.3	1,177.2	0.00	0.00	
9,997.5	0.00	0.00	9,906.0	45.2	1,176.3	1,177.2	0.00	0.00	ROLLINS
10,000.0	0.00	0.00	9,908.5	45.2	1,176.3	1,177.2	0.00	0.00	
10,100.0	0.00	0.00	10,008.5	45.2	1,176.3	1,177.2	0.00	0.00	
10,147.5	0.00	0.00	10,056.0	45.2	1,176.3	1,177.2	0.00	0.00	TD at 10147.5 - TD

Targets									
Target Name									
- hit/miss target	Dip Angle (°)	Dip Dir. (°)	TVD (usft)	+N/-S (usft)	+E/-W (usft)	Northing (usft)	Easting (usft)	Latitude	Longitude
- Shape									
23A-35-795 PBHL	0.00	0.00	10,056.0	45.2	1,176.3	14,319,319.00	2,497,373.10	39.392699	-107.967055
- plan hits target center									
- Point									

Formations						
Measured Depth (usft)	Vertical Depth (usft)	Name	Lithology	Dip (°)	Dip Direction (°)	
7,007.1	6,926.0	OHIO_CREEK				
7,310.9	7,226.0	WILLIAMS_FORK				
8,147.5	8,056.0	TOP_GAS				
9,727.5	9,636.0	CAMEO				
9,997.5	9,906.0	ROLLINS				
10,147.5	10,056.0	TD				

Plan Annotations					
Measured Depth (usft)	Vertical Depth (usft)	Local Coordinates			
		+N/-S (usft)	+E/-W (usft)	Comment	
150.0	150.0	0.0	0.0	Start Build 3.00	
316.7	316.5	6.0	4.2	Start DLS 3.00 TFO 87.00	
557.6	555.8	15.1	29.1	Start 7190.0 hold at 557.6 MD	
7,747.7	7,657.4	44.6	1,152.8	Start Drop -3.00	
8,047.5	7,956.0	45.2	1,176.3	Start 2100.0 hold at 8047.5 MD	
10,147.5	10,056.0	45.2	1,176.3	TD at 10147.5	