

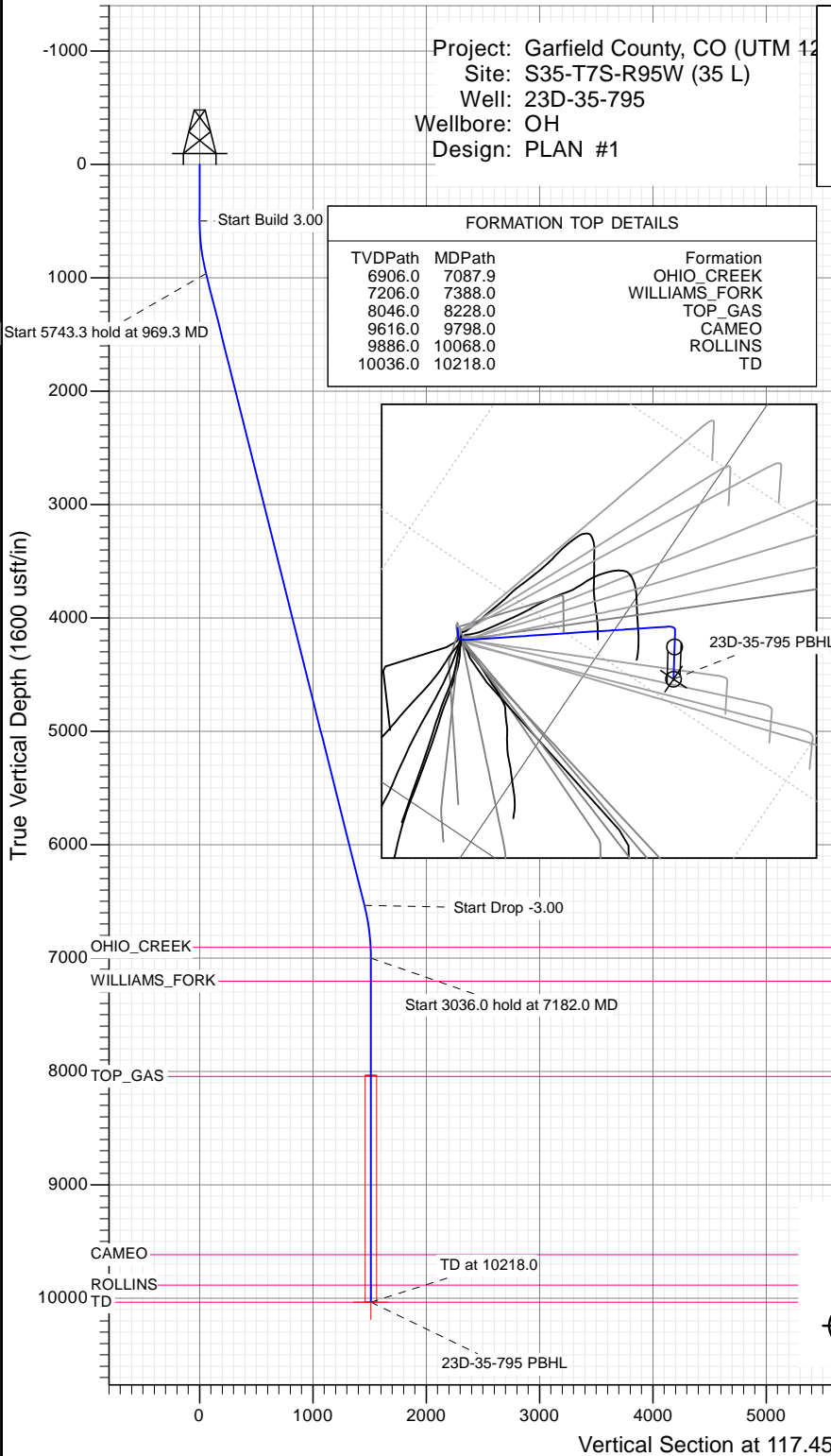


SECTION DETAILS

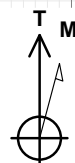
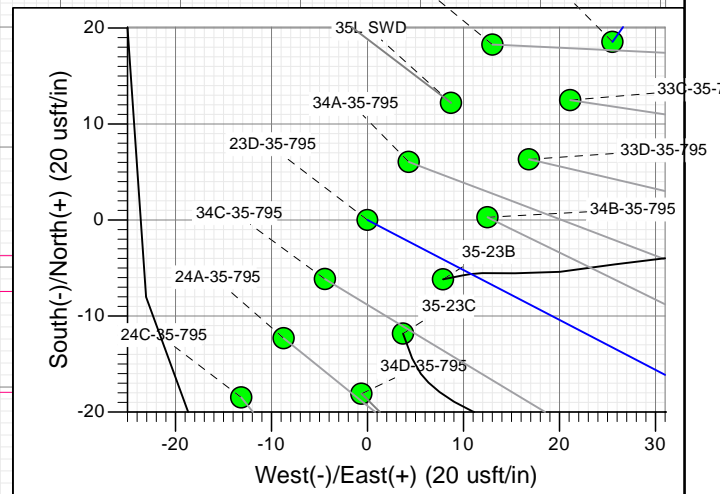
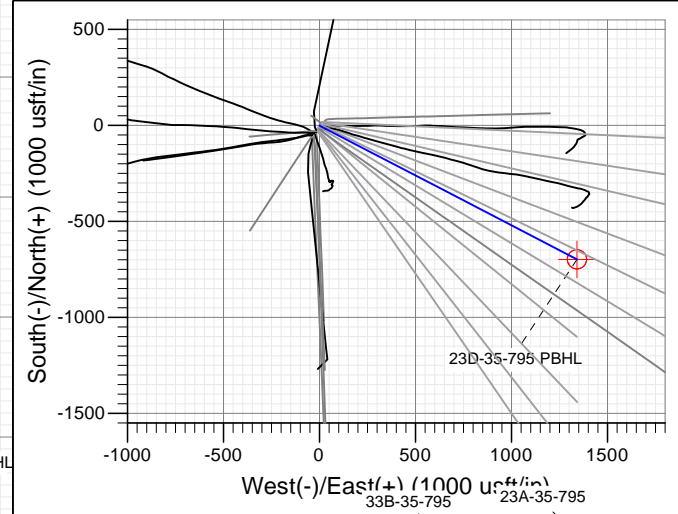
Sec	MD	Inc	Azi	TVD	+N/-S	+E/-W	Dleg	TFace	VSect	Target
1	0.0	0.00	0.00	0.0	0.0	0.0	0.00	0.00	0.0	
2	500.0	0.00	0.00	500.0	0.0	0.0	0.00	0.00	0.0	
3	969.3	14.08	117.45	964.6	-26.5	50.9	3.00	117.45	57.4	
4	6712.6	14.08	117.45	6535.4	-670.6	1290.7	0.00	0.00	1454.5	
5	7182.0	0.00	0.00	7000.0	-697.0	1341.7	3.00	180.00	1511.9	
6	10218.0	0.00	0.00	10036.0	-697.0	1341.7	0.00	0.00	1511.9	23D-35-795 PBHL

Project: Garfield County, CO (UTM 12
Site: S35-T7S-R95W (35 L)
Well: 23D-35-795
Wellbore: OH
Design: PLAN #1

PLAN #1 23D-35-795 15XXX; LR 30' KB @ 9236.0usft (H&P 330) Ground Level @ 9206.0 NAD 1927 - Western US Well 23D-35-795, True North									
Name	Type	Target	No Target (Freehand)	Azimuth	Origin Type	N/S	E/W	From TVD	
23D-35-795 PBHL	TD			117.45	Slot	0.0	0.0	0.0	
				TVD		+N/-S	+E/-W	Latitude	Longitude
				10036.0		-697.0	1341.7	39.390611	-107.966561



FORMATION TOP DETAILS		
TVDPath	MDPath	Formation
6906.0	7087.9	OHIO_CREEK
7206.0	7388.0	WILLIAMS_FORK
8046.0	8228.0	TOP_GAS
9616.0	9798.0	CAMEO
9886.0	10068.0	ROLLINS
10036.0	10218.0	TD



Azimuths to True North
Magnetic North: 9.45°
Magnetic Field
Strength: 51888.8snT
Dip Angle: 65.60°
Date: 12/9/2015
Model: HDGM

CASING DETAILS

No casing data is available



WELL DETAILS: 23D-35-795

Ground Level: 9206.0
+N/-S 0.0 +E/-W 0.0 Northing 14319214.90 Easting 2496174.10 Latitude 39.392524 Longitude -107.971305



Planning Report

Database:	USA EDM 5000 Multi Users DB	Local Co-ordinate Reference:	Well 23D-35-795
Company:	Caerus Oil & Gas	TVD Reference:	30' KB @ 9236.0usft (H&P 330)
Project:	Garfield County, CO (UTM 12N)	MD Reference:	30' KB @ 9236.0usft (H&P 330)
Site:	S35-T7S-R95W (35 L)	North Reference:	True
Well:	23D-35-795	Survey Calculation Method:	Minimum Curvature
Wellbore:	OH		
Design:	PLAN #1		

Project	Garfield County, CO (UTM 12N)		
Map System:	Universal Transverse Mercator (US Survey Feet)	System Datum:	Mean Sea Level
Geo Datum:	NAD 1927 - Western US		
Map Zone:	Zone 12N (114 W to 108 W)		

Site		S35-T7S-R95W (35 L)			
Site Position:		Northing:	14,319,233.60 usft	Latitude:	39.392574
From:	Map	Easting:	2,496,186.50 usft	Longitude:	-107.971259
Position Uncertainty:	0.0 usft	Slot Radius:	13-3/16 "	Grid Convergence:	1.92 °

Well	23D-35-795					
Well Position	+N/-S	0.0 usft	Northing:	14,319,214.90 usft	Latitude:	39.392524
	+E/-W	0.0 usft	Easting:	2,496,174.10 usft	Longitude:	-107.971305
Position Uncertainty		0.0 usft	Wellhead Elevation:	0.0 usft	Ground Level:	9,206.0 usft

Wellbore	OH				
Magnetics	Model Name	Sample Date	Declination	Dip Angle	Field Strength
			(°)	(°)	(nT)
	HDGM	12/9/2015	9.45	65.60	51,889

Design	PLAN #1			
Audit Notes:				
Version:	Phase:	PLAN	Tie On Depth:	0.0
Vertical Section:	Depth From (TVD)	+N/-S	+E/-W	Direction
	(usft)	(usft)	(usft)	(°)
	0.0	0.0	0.0	117.45

Plan Sections										
Measured Depth (usft)	Inclination (°)	Azimuth (°)	Vertical Depth (usft)	+N/-S (usft)	+E/-W (usft)	Dogleg Rate (°/100usft)	Build Rate (°/100usft)	Turn Rate (°/100usft)	TFO (°)	Target
0.0	0.00	0.00	0.0	0.0	0.0	0.00	0.00	0.00	0.00	
500.0	0.00	0.00	500.0	0.0	0.0	0.00	0.00	0.00	0.00	
969.3	14.08	117.45	964.6	-26.5	50.9	3.00	3.00	0.00	117.45	
6,712.6	14.08	117.45	6,535.4	-670.6	1,290.7	0.00	0.00	0.00	0.00	
7,182.0	0.00	0.00	7,000.0	-697.0	1,341.7	3.00	-3.00	0.00	180.00	
10,218.0	0.00	0.00	10,036.0	-697.0	1,341.7	0.00	0.00	0.00	0.00	23D-35-795 PBHL

Planning Report

Database:	USA EDM 5000 Multi Users DB	Local Co-ordinate Reference:	Well 23D-35-795
Company:	Caerus Oil & Gas	TVD Reference:	30' KB @ 9236.0usft (H&P 330)
Project:	Garfield County, CO (UTM 12N)	MD Reference:	30' KB @ 9236.0usft (H&P 330)
Site:	S35-T7S-R95W (35 L)	North Reference:	True
Well:	23D-35-795	Survey Calculation Method:	Minimum Curvature
Wellbore:	OH		
Design:	PLAN #1		

Planned Survey									
Measured Depth (usft)	Inclination (°)	Azimuth (°)	Vertical Depth (usft)	+N/-S (usft)	+E/-W (usft)	Vertical Section (usft)	Dogleg Rate (°/100usft)	Build Rate (°/100u)	Comments / Formations
0.0	0.00	0.00	0.0	0.0	0.0	0.0	0.00	0.00	
100.0	0.00	0.00	100.0	0.0	0.0	0.0	0.00	0.00	
200.0	0.00	0.00	200.0	0.0	0.0	0.0	0.00	0.00	
300.0	0.00	0.00	300.0	0.0	0.0	0.0	0.00	0.00	
400.0	0.00	0.00	400.0	0.0	0.0	0.0	0.00	0.00	
500.0	0.00	0.00	500.0	0.0	0.0	0.0	0.00	0.00	Start Build 3.00
600.0	3.00	117.45	600.0	-1.2	2.3	2.6	3.00	3.00	
700.0	6.00	117.45	699.6	-4.8	9.3	10.5	3.00	3.00	
800.0	9.00	117.45	798.8	-10.8	20.9	23.5	3.00	3.00	
900.0	12.00	117.45	897.1	-19.2	37.0	41.7	3.00	3.00	
969.3	14.08	117.45	964.6	-26.5	50.9	57.4	3.00	3.00	Start 5743.3 hold at 969.3 MD
1,000.0	14.08	117.45	994.4	-29.9	57.5	64.8	0.00	0.00	
1,100.0	14.08	117.45	1,091.4	-41.1	79.1	89.2	0.00	0.00	
1,200.0	14.08	117.45	1,188.4	-52.3	100.7	113.5	0.00	0.00	
1,300.0	14.08	117.45	1,285.4	-63.5	122.3	137.8	0.00	0.00	
1,400.0	14.08	117.45	1,382.4	-74.8	143.9	162.1	0.00	0.00	
1,500.0	14.08	117.45	1,479.3	-86.0	165.5	186.5	0.00	0.00	
1,600.0	14.08	117.45	1,576.3	-97.2	187.1	210.8	0.00	0.00	
1,700.0	14.08	117.45	1,673.3	-108.4	208.6	235.1	0.00	0.00	
1,800.0	14.08	117.45	1,770.3	-119.6	230.2	259.5	0.00	0.00	
1,900.0	14.08	117.45	1,867.3	-130.8	251.8	283.8	0.00	0.00	
2,000.0	14.08	117.45	1,964.3	-142.0	273.4	308.1	0.00	0.00	
2,100.0	14.08	117.45	2,061.3	-153.3	295.0	332.4	0.00	0.00	
2,200.0	14.08	117.45	2,158.3	-164.5	316.6	356.8	0.00	0.00	
2,300.0	14.08	117.45	2,255.3	-175.7	338.2	381.1	0.00	0.00	
2,400.0	14.08	117.45	2,352.3	-186.9	359.8	405.4	0.00	0.00	
2,500.0	14.08	117.45	2,449.3	-198.1	381.3	429.7	0.00	0.00	
2,600.0	14.08	117.45	2,546.3	-209.3	402.9	454.1	0.00	0.00	
2,700.0	14.08	117.45	2,643.3	-220.5	424.5	478.4	0.00	0.00	
2,800.0	14.08	117.45	2,740.3	-231.8	446.1	502.7	0.00	0.00	
2,900.0	14.08	117.45	2,837.3	-243.0	467.7	527.0	0.00	0.00	
3,000.0	14.08	117.45	2,934.3	-254.2	489.3	551.4	0.00	0.00	
3,100.0	14.08	117.45	3,031.3	-265.4	510.9	575.7	0.00	0.00	
3,200.0	14.08	117.45	3,128.3	-276.6	532.5	600.0	0.00	0.00	
3,300.0	14.08	117.45	3,225.3	-287.8	554.0	624.4	0.00	0.00	
3,400.0	14.08	117.45	3,322.3	-299.1	575.6	648.7	0.00	0.00	
3,500.0	14.08	117.45	3,419.3	-310.3	597.2	673.0	0.00	0.00	
3,600.0	14.08	117.45	3,516.3	-321.5	618.8	697.3	0.00	0.00	
3,700.0	14.08	117.45	3,613.3	-332.7	640.4	721.7	0.00	0.00	
3,800.0	14.08	117.45	3,710.3	-343.9	662.0	746.0	0.00	0.00	
3,900.0	14.08	117.45	3,807.3	-355.1	683.6	770.3	0.00	0.00	
4,000.0	14.08	117.45	3,904.2	-366.3	705.2	794.6	0.00	0.00	
4,100.0	14.08	117.45	4,001.2	-377.6	726.7	819.0	0.00	0.00	
4,200.0	14.08	117.45	4,098.2	-388.8	748.3	843.3	0.00	0.00	
4,300.0	14.08	117.45	4,195.2	-400.0	769.9	867.6	0.00	0.00	
4,400.0	14.08	117.45	4,292.2	-411.2	791.5	892.0	0.00	0.00	
4,500.0	14.08	117.45	4,389.2	-422.4	813.1	916.3	0.00	0.00	
4,600.0	14.08	117.45	4,486.2	-433.6	834.7	940.6	0.00	0.00	
4,700.0	14.08	117.45	4,583.2	-444.9	856.3	964.9	0.00	0.00	
4,800.0	14.08	117.45	4,680.2	-456.1	877.9	989.3	0.00	0.00	
4,900.0	14.08	117.45	4,777.2	-467.3	899.4	1,013.6	0.00	0.00	
5,000.0	14.08	117.45	4,874.2	-478.5	921.0	1,037.9	0.00	0.00	

Planning Report

Database:	USA EDM 5000 Multi Users DB	Local Co-ordinate Reference:	Well 23D-35-795
Company:	Caerus Oil & Gas	TVD Reference:	30' KB @ 9236.0usft (H&P 330)
Project:	Garfield County, CO (UTM 12N)	MD Reference:	30' KB @ 9236.0usft (H&P 330)
Site:	S35-T7S-R95W (35 L)	North Reference:	True
Well:	23D-35-795	Survey Calculation Method:	Minimum Curvature
Wellbore:	OH		
Design:	PLAN #1		

Planned Survey									
Measured Depth (usft)	Inclination (°)	Azimuth (°)	Vertical Depth (usft)	+N/-S (usft)	+E/-W (usft)	Vertical Section (usft)	Dogleg Rate (°/100usft)	Build Rate (°/100u)	Comments / Formations
5,100.0	14.08	117.45	4,971.2	-489.7	942.6	1,062.2	0.00	0.00	
5,200.0	14.08	117.45	5,068.2	-500.9	964.2	1,086.6	0.00	0.00	
5,300.0	14.08	117.45	5,165.2	-512.1	985.8	1,110.9	0.00	0.00	
5,400.0	14.08	117.45	5,262.2	-523.4	1,007.4	1,135.2	0.00	0.00	
5,500.0	14.08	117.45	5,359.2	-534.6	1,029.0	1,159.5	0.00	0.00	
5,600.0	14.08	117.45	5,456.2	-545.8	1,050.6	1,183.9	0.00	0.00	
5,700.0	14.08	117.45	5,553.2	-557.0	1,072.1	1,208.2	0.00	0.00	
5,800.0	14.08	117.45	5,650.2	-568.2	1,093.7	1,232.5	0.00	0.00	
5,900.0	14.08	117.45	5,747.2	-579.4	1,115.3	1,256.9	0.00	0.00	
6,000.0	14.08	117.45	5,844.2	-590.6	1,136.9	1,281.2	0.00	0.00	
6,100.0	14.08	117.45	5,941.2	-601.9	1,158.5	1,305.5	0.00	0.00	
6,200.0	14.08	117.45	6,038.2	-613.1	1,180.1	1,329.8	0.00	0.00	
6,300.0	14.08	117.45	6,135.2	-624.3	1,201.7	1,354.2	0.00	0.00	
6,400.0	14.08	117.45	6,232.1	-635.5	1,223.3	1,378.5	0.00	0.00	
6,500.0	14.08	117.45	6,329.1	-646.7	1,244.8	1,402.8	0.00	0.00	
6,600.0	14.08	117.45	6,426.1	-657.9	1,266.4	1,427.1	0.00	0.00	
6,700.0	14.08	117.45	6,523.1	-669.2	1,288.0	1,451.5	0.00	0.00	
6,712.6	14.08	117.45	6,535.4	-670.6	1,290.7	1,454.5	0.00	0.00	Start Drop -3.00
6,800.0	11.46	117.45	6,620.6	-679.5	1,307.9	1,473.9	3.00	-3.00	
6,900.0	8.46	117.45	6,719.1	-687.4	1,323.2	1,491.1	3.00	-3.00	
7,000.0	5.46	117.45	6,818.3	-693.0	1,334.0	1,503.3	3.00	-3.00	
7,087.9	2.82	117.45	6,906.0	-696.0	1,339.6	1,509.6	3.00	-3.00	OHIO_CREEK
7,100.0	2.46	117.45	6,918.1	-696.2	1,340.1	1,510.2	3.00	-3.00	
7,182.0	0.00	0.00	7,000.0	-697.0	1,341.7	1,511.9	3.00	-3.00	Start 3036.0 hold at 7182.0 MD
7,200.0	0.00	0.00	7,018.0	-697.0	1,341.7	1,511.9	0.00	0.00	
7,300.0	0.00	0.00	7,118.0	-697.0	1,341.7	1,511.9	0.00	0.00	
7,388.0	0.00	0.00	7,206.0	-697.0	1,341.7	1,511.9	0.00	0.00	WILLIAMS_FORK
7,400.0	0.00	0.00	7,218.0	-697.0	1,341.7	1,511.9	0.00	0.00	
7,500.0	0.00	0.00	7,318.0	-697.0	1,341.7	1,511.9	0.00	0.00	
7,600.0	0.00	0.00	7,418.0	-697.0	1,341.7	1,511.9	0.00	0.00	
7,700.0	0.00	0.00	7,518.0	-697.0	1,341.7	1,511.9	0.00	0.00	
7,800.0	0.00	0.00	7,618.0	-697.0	1,341.7	1,511.9	0.00	0.00	
7,900.0	0.00	0.00	7,718.0	-697.0	1,341.7	1,511.9	0.00	0.00	
8,000.0	0.00	0.00	7,818.0	-697.0	1,341.7	1,511.9	0.00	0.00	
8,100.0	0.00	0.00	7,918.0	-697.0	1,341.7	1,511.9	0.00	0.00	
8,200.0	0.00	0.00	8,018.0	-697.0	1,341.7	1,511.9	0.00	0.00	
8,228.0	0.00	0.00	8,046.0	-697.0	1,341.7	1,511.9	0.00	0.00	TOP_GAS
8,300.0	0.00	0.00	8,118.0	-697.0	1,341.7	1,511.9	0.00	0.00	
8,400.0	0.00	0.00	8,218.0	-697.0	1,341.7	1,511.9	0.00	0.00	
8,500.0	0.00	0.00	8,318.0	-697.0	1,341.7	1,511.9	0.00	0.00	
8,600.0	0.00	0.00	8,418.0	-697.0	1,341.7	1,511.9	0.00	0.00	
8,700.0	0.00	0.00	8,518.0	-697.0	1,341.7	1,511.9	0.00	0.00	
8,800.0	0.00	0.00	8,618.0	-697.0	1,341.7	1,511.9	0.00	0.00	
8,900.0	0.00	0.00	8,718.0	-697.0	1,341.7	1,511.9	0.00	0.00	
9,000.0	0.00	0.00	8,818.0	-697.0	1,341.7	1,511.9	0.00	0.00	
9,100.0	0.00	0.00	8,918.0	-697.0	1,341.7	1,511.9	0.00	0.00	
9,200.0	0.00	0.00	9,018.0	-697.0	1,341.7	1,511.9	0.00	0.00	
9,300.0	0.00	0.00	9,118.0	-697.0	1,341.7	1,511.9	0.00	0.00	
9,400.0	0.00	0.00	9,218.0	-697.0	1,341.7	1,511.9	0.00	0.00	
9,500.0	0.00	0.00	9,318.0	-697.0	1,341.7	1,511.9	0.00	0.00	
9,600.0	0.00	0.00	9,418.0	-697.0	1,341.7	1,511.9	0.00	0.00	
9,700.0	0.00	0.00	9,518.0	-697.0	1,341.7	1,511.9	0.00	0.00	

Planning Report

Database:	USA EDM 5000 Multi Users DB	Local Co-ordinate Reference:	Well 23D-35-795
Company:	Caerus Oil & Gas	TVD Reference:	30' KB @ 9236.0usft (H&P 330)
Project:	Garfield County, CO (UTM 12N)	MD Reference:	30' KB @ 9236.0usft (H&P 330)
Site:	S35-T7S-R95W (35 L)	North Reference:	True
Well:	23D-35-795	Survey Calculation Method:	Minimum Curvature
Wellbore:	OH		
Design:	PLAN #1		

Planned Survey

Measured Depth (usft)	Inclination (°)	Azimuth (°)	Vertical Depth (usft)	+N/-S (usft)	+E/-W (usft)	Vertical Section (usft)	Dogleg Rate (°/100usft)	Build Rate (°/100u)	Comments / Formations
9,798.0	0.00	0.00	9,616.0	-697.0	1,341.7	1,511.9	0.00	0.00	CAMEO
9,800.0	0.00	0.00	9,618.0	-697.0	1,341.7	1,511.9	0.00	0.00	
9,900.0	0.00	0.00	9,718.0	-697.0	1,341.7	1,511.9	0.00	0.00	
10,000.0	0.00	0.00	9,818.0	-697.0	1,341.7	1,511.9	0.00	0.00	
10,068.0	0.00	0.00	9,886.0	-697.0	1,341.7	1,511.9	0.00	0.00	ROLLINS
10,100.0	0.00	0.00	9,918.0	-697.0	1,341.7	1,511.9	0.00	0.00	
10,200.0	0.00	0.00	10,018.0	-697.0	1,341.7	1,511.9	0.00	0.00	
10,218.0	0.00	0.00	10,036.0	-697.0	1,341.7	1,511.9	0.00	0.00	TD at 10218.0 - TD

Targets

Target Name	Dip Angle (°)	Dip Dir. (°)	TVD (usft)	+N/-S (usft)	+E/-W (usft)	Northing (usft)	Easting (usft)	Latitude	Longitude
23D-35-795 PBHL - hit/miss target - Shape - plan hits target center - Circle (radius 50.0)	0.00	0.00	10,036.0	-697.0	1,341.7	14,318,563.30	2,497,538.40	39.390611	-107.966561

Formations

Measured Depth (usft)	Vertical Depth (usft)	Name	Lithology	Dip (°)	Dip Direction (°)
7,087.9	6,906.0	OHIO_CREEK			
7,388.0	7,206.0	WILLIAMS_FORK			
8,228.0	8,046.0	TOP_GAS			
9,798.0	9,616.0	CAMEO			
10,068.0	9,886.0	ROLLINS			
10,218.0	10,036.0	TD			

Plan Annotations

Measured Depth (usft)	Vertical Depth (usft)	+N/-S (usft)	+E/-W (usft)	Comment
500.0	500.0	0.0	0.0	Start Build 3.00
969.3	964.6	-26.5	50.9	Start 5743.3 hold at 969.3 MD
6,712.6	6,535.4	-670.6	1,290.7	Start Drop -3.00
7,182.0	7,000.0	-697.0	1,341.7	Start 3036.0 hold at 7182.0 MD
10,218.0	10,036.0	-697.0	1,341.7	TD at 10218.0