



photo 1: Facing southwest towards the location along the access road.



photo 2: Facing southwest towards the location.



photo 3: Erosion channel cutting across the access road at the location.



photo 4: Evidence of erosion off the east side of the location.



Photo 5: Facing east at the east side of the location. Evidence of erosion occurring onto the location.



Photo 6: Facing east at the east side of the location. Evidence of erosion occurring onto the location.



Photo 7: Facing towards the south side of the location where erosion gully has formed.



Photo 8: An erosion gully has formed off the southwest side of the location.



Photo 9: Facing north towards the location where erosion disturbances are evident.



Photo 10: Facing north toward the location. Erosion gully is evident at the southwest side of the location.



Photo 11: Facing toward the southwest side of the location.



Photo 12: Erosion channels off the northwest side of the location.

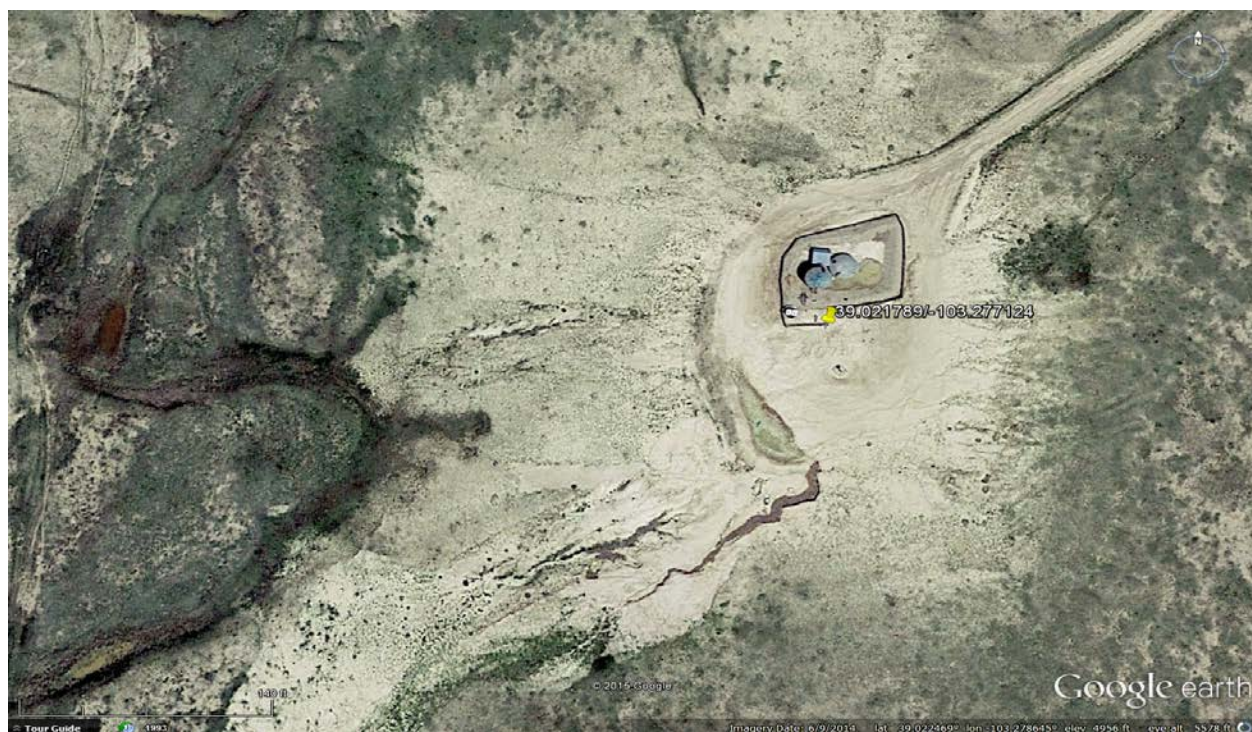


Photo 13: Aerial image of the location from 6/2014. The photo indicates the proximity to a water feature.



Photo 14: Surrounding pasture adjacent to the location.