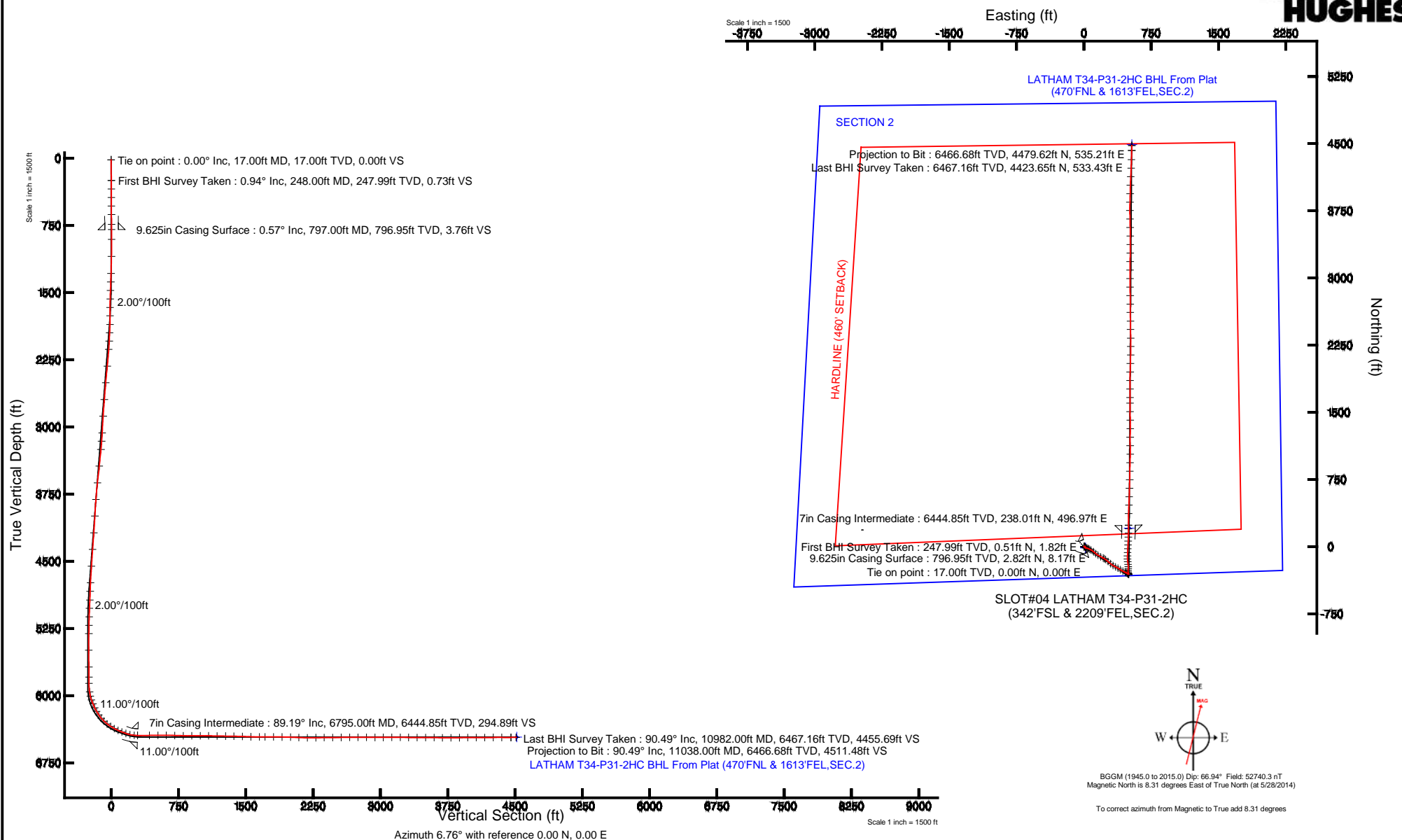


Location:	COLORADO	Slot:	SLOT#04 LATHAM T34-P31-2HC (342'FSL & 2209'FEL, SEC.2)
Field:	WELD COUNTY	Well:	LATHAM T34-P31-2HC
Facility:	SEC.02-T4N-R63W	Wellbore:	LATHAM T34-P31-2HC PWB

Location:	COLORADO	Slot:	SLOT#04 LATHAM T34-P31-2HC (342'FSL & 2209'FEL, SEC.2)
Field:	WELD COUNTY	Well:	LATHAM T34-P31-2HC
Facility:	SEC.02-T4N-R63W	Wellbore:	LATHAM T34-P31-2HC PWB

True vertical depths are referenced to RIG (RKB)	Grid System: NAD83 / Lambert Colorado SP, Northern Zone (501), US feet
Measured depths are referenced to RIG (RKB)	North Reference: True north
RIG (RKB) to Mean Sea Level: 4537 feet	Scale: True distance
Mean Sea Level to Mud line (At Slot: SLOT#04 LATHAM T34-P31-2HC (342'FSL & 2209'FEL_SEC.2)) 0 feet	Depths are in feet
Coordinates are in feet referenced to Slot	Created by: uenaler on 10/15/2014

Facility Name				Grid East (US ft)	Grid North (US ft)	Latitude	Longitude
SEC.02-T4N-R63W				3305684.609	1366847.824	40°20'06.756"N	104°24'12.420"W
Slot		Local N (ft)	Local E (ft)	Grid East (US ft)	Grid North (US ft)	Latitude	Longitude
SLOT#04 LATHAM T34-P31-2HC (342°FSL & 2209°FEL,SEC.2)		25.50	-61.33	3305622.968	1366872.564	40°20'07.008"N	104°24'13.212"W
RIG (RKB) to Mud line (At Slot: SLOT#04 LATHAM T34-P31-2HC (342°FSL & 2209°FEL,SEC.2))						4537ft	
Mean Sea Level to Mud line (At Slot: SLOT#04 LATHAM T34-P31-2HC (342°FSL & 2209°FEL,SEC.2))						0ft	
RIG (RKB) to Mean Sea Level						4537ft	





Actual Wellpath Report

LATHAM T34-P31-2HC AWP

Page 1 of 7



REFERENCE WELLPATH IDENTIFICATION

Operator	BONANZA CREEK OIL COMPANY	Slot	SLOT#04 LATHAM T34-P31-2HC (342'FSL & 2209'FEL,SEC.2)
Area	COLORADO	Well	LATHAM T34-P31-2HC
Field	WELD COUNTY	Wellbore	LATHAM T34-P31-2HC AWB
Facility	SEC.02-T4N-R63W		

REPORT SETUP INFORMATION

Projection System	NAD83 / Lambert Colorado SP, Northern Zone (501), US feet	Software System	WellArchitect® 4.0.0
North Reference	True	User	Guenaler
Scale	0.999958	Report Generated	10/15/2014 at 2:17:25 PM
Convergence at slot	n/a	Database/Source file	WA_Denver/LATHAM_T34-P31-2HC_AWB.xml

WELLPATH LOCATION

	Local coordinates		Grid coordinates		Geographic coordinates	
	North[ft]	East[ft]	Easting[US ft]	Northing[US ft]	Latitude	Longitude
Slot Location	25.50	-61.33	3305622.97	1366872.56	40°20'07.008"N	104°24'13.212"W
Facility Reference Pt			3305684.61	1366847.82	40°20'06.756"N	104°24'12.420"W
Field Reference Pt			3335925.10	1457282.25	40°34'56.460"N	104°17'26.016"W

WELLPATH DATUM

Calculation method	Minimum curvature	RIG (RKB) to Facility Vertical Datum	4537.00ft
Horizontal Reference Pt	Slot	RIG (RKB) to Mean Sea Level	4537.00ft
Vertical Reference Pt	RIG (RKB)	RIG (RKB) to Mud Line at Slot (SLOT#04 LATHAM T34-P31-2HC (342'FSL & 2209'FEL,SEC.2))	4537.00ft
MD Reference Pt	RIG (RKB)	Section Origin	N 0.00, E 0.00 ft
Field Vertical Reference	Mean Sea Level	Section Azimuth	6.76°



Actual Wellpath Report

LATHAM T34-P31-2HC AWP

Page 2 of 7



REFERENCE WELLPATH IDENTIFICATION

Operator	BONANZA CREEK OIL COMPANY	Slot	SLOT#04 LATHAM T34-P31-2HC (342'FSL & 2209'FEL,SEC.2)
Area	COLORADO	Well	LATHAM T34-P31-2HC
Field	WELD COUNTY	Wellbore	LATHAM T34-P31-2HC AWP
Facility	SEC.02-T4N-R63W		

WELLPATH DATA (108 stations) † = interpolated/extrapolated station

MD [ft]	Inclination [°]	Azimuth [°]	TVD [ft]	Vert Sect [ft]	North [ft]	East [ft]	Latitude	Longitude	DLS [°/100ft]	Comments
0.00†	0.000	74.230	0.00	0.00	0.00	0.00	40°20'07.008"N	104°24'13.212"W	0.00	
17.00	0.000	74.230	17.00	0.00	0.00	0.00	40°20'07.008"N	104°24'13.212"W	0.00	Tie on point
248.00	0.940	74.230	247.99	0.73	0.51	1.82	40°20'07.013"N	104°24'13.188"W	0.41	First BHI Survey Taken
344.00	0.990	66.010	343.98	1.45	1.07	3.34	40°20'07.019"N	104°24'13.169"W	0.15	
438.00	0.570	95.810	437.97	1.88	1.35	4.55	40°20'07.021"N	104°24'13.153"W	0.61	
533.00	0.700	58.900	532.96	2.24	1.60	5.51	40°20'07.024"N	104°24'13.141"W	0.44	
628.00	0.730	82.870	627.95	2.74	1.98	6.61	40°20'07.028"N	104°24'13.127"W	0.31	
739.00	0.580	46.750	738.95	3.34	2.45	7.72	40°20'07.032"N	104°24'13.112"W	0.39	
907.00	0.570	68.870	906.94	4.38	3.33	9.12	40°20'07.041"N	104°24'13.094"W	0.13	
1097.00	1.500	165.110	1096.92	2.51	1.27	10.64	40°20'07.021"N	104°24'13.075"W	0.87	
1287.00	1.510	158.530	1286.85	-2.00	-3.46	12.20	40°20'06.974"N	104°24'13.055"W	0.09	
1382.00	3.010	143.610	1381.77	-4.93	-6.64	14.13	40°20'06.942"N	104°24'13.029"W	1.68	
1477.00	2.970	144.230	1476.65	-8.56	-10.64	17.05	40°20'06.903"N	104°24'12.992"W	0.05	
1571.00	3.020	125.000	1570.52	-11.52	-14.04	20.50	40°20'06.869"N	104°24'12.947"W	1.07	
1666.00	3.810	104.240	1665.35	-13.12	-16.25	25.61	40°20'06.847"N	104°24'12.881"W	1.53	
1761.00	5.380	90.740	1760.05	-13.06	-17.08	33.13	40°20'06.839"N	104°24'12.784"W	2.00	
1857.00	6.090	114.230	1855.58	-14.12	-19.23	42.27	40°20'06.818"N	104°24'12.666"W	2.53	
1951.00	8.290	114.660	1948.83	-17.70	-24.11	52.98	40°20'06.770"N	104°24'12.528"W	2.34	
2045.00	9.870	115.820	2041.65	-22.41	-30.44	66.39	40°20'06.707"N	104°24'12.355"W	1.69	
2140.00	9.900	119.660	2135.24	-28.25	-38.03	80.82	40°20'06.632"N	104°24'12.168"W	0.69	
2329.00	10.370	130.400	2321.31	-43.99	-57.10	107.89	40°20'06.444"N	104°24'11.819"W	1.03	
2518.00	8.830	130.960	2507.66	-61.57	-77.63	131.80	40°20'06.241"N	104°24'11.510"W	0.82	
2708.00	10.790	120.020	2694.89	-76.79	-96.09	158.22	40°20'06.058"N	104°24'11.169"W	1.42	
2896.00	10.010	118.740	2879.80	-89.85	-112.75	187.78	40°20'05.894"N	104°24'10.787"W	0.43	
3085.00	8.910	116.510	3066.23	-100.94	-127.19	215.28	40°20'05.751"N	104°24'10.432"W	0.61	
3180.00	9.480	121.680	3160.01	-106.72	-134.58	228.52	40°20'05.678"N	104°24'10.261"W	1.06	
3274.00	10.430	128.530	3252.59	-114.46	-143.94	241.77	40°20'05.586"N	104°24'10.090"W	1.61	
3462.00	11.060	129.680	3437.30	-133.22	-166.06	268.96	40°20'05.367"N	104°24'09.739"W	0.35	
3652.00	11.420	130.490	3623.65	-153.57	-189.91	297.29	40°20'05.131"N	104°24'09.373"W	0.21	
3841.00	9.750	121.430	3809.44	-170.64	-210.41	325.18	40°20'04.929"N	104°24'09.013"W	1.24	



Actual Wellpath Report

LATHAM T34-P31-2HC AWP

Page 3 of 7



REFERENCE WELLPATH IDENTIFICATION			
Operator	BONANZA CREEK OIL COMPANY	Slot	SLOT#04 LATHAM T34-P31-2HC (342'FSL & 2209'FEL,SEC.2)
Area	COLORADO	Well	LATHAM T34-P31-2HC
Field	WELD COUNTY	Wellbore	LATHAM T34-P31-2HC AWP
Facility	SEC.02-T4N-R63W		

WELLPATH DATA (108 stations)										
MD [ft]	Inclination [°]	Azimuth [°]	TVD [ft]	Vert Sect [ft]	North [ft]	East [ft]	Latitude	Longitude	DLS [°/100ft]	Comments
4030.00	9.160	115.400	3995.88	-182.12	-225.20	352.43	40°20'04.783"N	104°24'08.661"W	0.61	
4220.00	10.320	120.420	4183.14	-193.79	-240.31	380.77	40°20'04.633"N	104°24'08.295"W	0.76	
4408.00	8.950	125.170	4368.49	-207.50	-257.26	407.24	40°20'04.466"N	104°24'07.953"W	0.84	
4597.00	9.910	118.400	4554.94	-220.49	-273.46	433.57	40°20'04.306"N	104°24'07.613"W	0.78	
4785.00	8.570	114.680	4740.49	-230.76	-287.01	460.53	40°20'04.172"N	104°24'07.265"W	0.78	
4880.00	7.130	112.660	4834.60	-234.56	-292.24	472.40	40°20'04.120"N	104°24'07.112"W	1.54	
4979.00	5.940	122.610	4932.96	-238.47	-297.36	482.39	40°20'04.069"N	104°24'06.983"W	1.66	
5073.00	4.940	121.560	5026.54	-242.29	-302.10	489.93	40°20'04.023"N	104°24'06.886"W	1.07	
5167.00	2.730	134.740	5120.32	-245.37	-305.80	494.97	40°20'03.986"N	104°24'06.820"W	2.52	
5262.00	2.330	133.030	5215.23	-247.90	-308.71	497.99	40°20'03.957"N	104°24'06.782"W	0.43	
5355.00	0.510	160.350	5308.20	-249.39	-310.39	499.51	40°20'03.941"N	104°24'06.762"W	2.03	
5540.00	0.290	43.170	5493.19	-249.75	-310.82	500.11	40°20'03.936"N	104°24'06.754"W	0.37	
5728.00	0.190	339.460	5681.19	-249.09	-310.18	500.33	40°20'03.943"N	104°24'06.751"W	0.14	
5840.00	0.560	313.230	5793.19	-248.60	-309.63	499.86	40°20'03.948"N	104°24'06.757"W	0.36	
5910.00	0.930	309.880	5863.18	-248.09	-309.04	499.18	40°20'03.954"N	104°24'06.766"W	0.53	
6006.00	8.260	342.350	5958.82	-241.37	-301.96	496.48	40°20'04.024"N	104°24'06.801"W	7.80	
6053.00	13.840	349.500	6004.93	-232.92	-293.20	494.43	40°20'04.111"N	104°24'06.827"W	12.20	
6098.00	19.230	354.530	6048.05	-220.53	-280.52	492.75	40°20'04.236"N	104°24'06.849"W	12.38	
6145.00	22.580	5.350	6091.97	-203.93	-263.82	492.85	40°20'04.401"N	104°24'06.848"W	10.85	
6192.00	26.100	3.320	6134.79	-184.59	-244.51	494.29	40°20'04.592"N	104°24'06.829"W	7.70	
6239.00	29.710	357.170	6176.32	-162.77	-222.55	494.31	40°20'04.809"N	104°24'06.829"W	9.81	
6285.00	35.420	353.890	6215.08	-138.52	-197.89	492.33	40°20'05.052"N	104°24'06.855"W	12.99	
6332.00	40.190	352.010	6252.20	-110.56	-169.31	488.77	40°20'05.335"N	104°24'06.901"W	10.44	
6378.00	45.420	357.290	6285.95	-80.01	-138.21	485.93	40°20'05.642"N	104°24'06.937"W	13.78	
6425.00	51.560	2.420	6317.10	-45.10	-103.06	485.92	40°20'05.990"N	104°24'06.937"W	15.40	
6472.00	57.950	3.210	6344.21	-6.83	-64.74	487.81	40°20'06.368"N	104°24'06.913"W	13.66	
6519.00	62.360	2.820	6367.59	33.84	-24.04	489.95	40°20'06.770"N	104°24'06.885"W	9.41	
6566.00	65.970	2.320	6388.07	76.02	18.21	491.84	40°20'07.188"N	104°24'06.861"W	7.74	
6613.00	69.250	2.470	6405.97	119.35	61.63	493.66	40°20'07.617"N	104°24'06.837"W	6.98	
6661.00	70.470	3.000	6422.50	164.30	106.64	495.81	40°20'08.062"N	104°24'06.810"W	2.74	



Actual Wellpath Report

LATHAM T34-P31-2HC AWP

Page 4 of 7



REFERENCE WELLPATH IDENTIFICATION			
Operator	BONANZA CREEK OIL COMPANY	Slot	SLOT#04 LATHAM T34-P31-2HC (342'FSL & 2209'FEL,SEC.2)
Area	COLORADO	Well	LATHAM T34-P31-2HC
Field	WELD COUNTY	Wellbore	LATHAM T34-P31-2HC AWP
Facility	SEC.02-T4N-R63W		

WELLPATH DATA (108 stations)										
MD [ft]	Inclination [°]	Azimuth [°]	TVD [ft]	Vert Sect [ft]	North [ft]	East [ft]	Latitude	Longitude	DLS [°/100ft]	Comments
6708.00	76.830	1.530	6435.72	209.23	151.68	497.58	40°20'08.507"N	104°24'06.787"W	13.86	
6757.00	85.700	358.710	6443.16	257.29	200.06	497.67	40°20'08.985"N	104°24'06.786"W	18.97	
6795.00	89.190	359.180	6444.85	294.89	238.01	496.97	40°20'09.360"N	104°24'06.795"W	9.27	
6926.00	91.110	1.850	6444.51	425.09	368.98	498.15	40°20'10.654"N	104°24'06.779"W	2.51	
7021.00	90.180	2.180	6443.44	519.76	463.92	501.49	40°20'11.592"N	104°24'06.736"W	1.04	
7115.00	89.910	2.590	6443.36	613.48	557.84	505.40	40°20'12.520"N	104°24'06.686"W	0.52	
7210.00	88.050	0.940	6445.05	708.10	652.77	508.33	40°20'13.458"N	104°24'06.648"W	2.62	
7305.00	88.890	1.770	6447.59	802.64	747.71	510.57	40°20'14.397"N	104°24'06.619"W	1.24	
7400.00	89.690	0.750	6448.77	897.19	842.67	512.66	40°20'15.335"N	104°24'06.592"W	1.36	
7495.00	90.650	1.790	6448.49	991.75	937.65	514.77	40°20'16.274"N	104°24'06.565"W	1.49	
7589.00	88.860	0.170	6448.89	1085.27	1031.63	516.37	40°20'17.202"N	104°24'06.544"W	2.57	
7684.00	89.320	359.300	6450.40	1179.54	1126.61	515.94	40°20'18.141"N	104°24'06.549"W	1.04	
7779.00	88.490	0.410	6452.21	1273.83	1221.59	515.69	40°20'19.079"N	104°24'06.552"W	1.46	
7874.00	89.290	0.440	6454.05	1368.23	1316.57	516.40	40°20'20.018"N	104°24'06.543"W	0.84	
7969.00	87.720	359.440	6456.53	1462.52	1411.53	516.30	40°20'20.956"N	104°24'06.545"W	1.96	
8064.00	88.610	359.140	6459.57	1556.67	1506.48	515.12	40°20'21.895"N	104°24'06.560"W	0.99	
8160.00	89.690	359.860	6461.00	1651.88	1602.46	514.29	40°20'22.843"N	104°24'06.571"W	1.35	
8223.00	90.280	359.540	6461.01	1714.40	1665.46	513.96	40°20'23.466"N	104°24'06.575"W	1.07	
8318.00	89.510	0.370	6461.19	1808.73	1760.46	513.88	40°20'24.404"N	104°24'06.576"W	1.19	
8413.00	89.570	0.360	6461.95	1903.14	1855.45	514.49	40°20'25.343"N	104°24'06.568"W	0.06	
8508.00	87.590	1.610	6464.31	1997.62	1950.40	516.12	40°20'26.281"N	104°24'06.547"W	2.46	
8603.00	87.720	1.430	6468.19	2092.14	2045.29	518.64	40°20'27.219"N	104°24'06.514"W	0.23	
8697.00	89.970	1.940	6470.09	2185.75	2139.22	521.40	40°20'28.147"N	104°24'06.479"W	2.45	
8792.00	90.150	359.380	6469.99	2280.20	2234.21	522.49	40°20'29.086"N	104°24'06.464"W	2.70	
8886.00	91.230	359.290	6468.86	2373.40	2328.19	521.40	40°20'30.015"N	104°24'06.478"W	1.15	
8982.00	90.060	359.190	6467.78	2468.57	2424.18	520.13	40°20'30.963"N	104°24'06.495"W	1.22	
9076.00	91.050	359.270	6466.86	2561.75	2518.16	518.87	40°20'31.892"N	104°24'06.511"W	1.06	
9172.00	89.780	359.140	6466.17	2656.91	2614.15	517.54	40°20'32.840"N	104°24'06.528"W	1.33	
9266.00	90.520	359.540	6465.92	2750.12	2708.14	516.45	40°20'33.769"N	104°24'06.542"W	0.89	
9361.00	89.350	359.870	6466.03	2844.40	2803.14	515.96	40°20'34.708"N	104°24'06.549"W	1.28	



Actual Wellpath Report

LATHAM T34-P31-2HC AWP

Page 5 of 7



REFERENCE WELLPATH IDENTIFICATION

Operator	BONANZA CREEK OIL COMPANY	Slot	SLOT#04 LATHAM T34-P31-2HC (342'FSL & 2209'FEL,SEC.2)
Area	COLORADO	Well	LATHAM T34-P31-2HC
Field	WELD COUNTY	Wellbore	LATHAM T34-P31-2HC AWB
Facility	SEC.02-T4N-R63W		

WELLPATH DATA (108 stations)

MD [ft]	Inclination [°]	Azimuth [°]	TVD [ft]	Vert Sect [ft]	North [ft]	East [ft]	Latitude	Longitude	DLS [°/100ft]	Comments
9456.00	89.630	359.180	6466.88	2938.64	2898.13	515.18	40°20'35.647"N	104°24'06.559"W	0.78	
9550.00	90.340	359.970	6466.90	3031.90	2992.13	514.48	40°20'36.575"N	104°24'06.568"W	1.13	
9645.00	89.780	0.660	6466.80	3126.30	3087.13	515.00	40°20'37.514"N	104°24'06.561"W	0.94	
9740.00	90.220	0.100	6466.80	3220.71	3182.12	515.63	40°20'38.453"N	104°24'06.553"W	0.75	
9835.00	89.230	0.670	6467.26	3315.12	3277.12	516.27	40°20'39.392"N	104°24'06.545"W	1.20	
9930.00	89.850	359.840	6468.02	3409.50	3372.11	516.69	40°20'40.330"N	104°24'06.539"W	1.09	
10025.00	89.850	0.140	6468.27	3503.84	3467.11	516.68	40°20'41.269"N	104°24'06.539"W	0.32	
10120.00	89.420	359.130	6468.87	3598.10	3562.11	516.07	40°20'42.208"N	104°24'06.547"W	1.16	
10215.00	88.340	358.820	6470.73	3692.20	3657.07	514.37	40°20'43.146"N	104°24'06.569"W	1.18	
10310.00	90.520	359.610	6471.68	3786.37	3752.05	513.07	40°20'44.085"N	104°24'06.586"W	2.44	
10404.00	91.660	1.150	6469.89	3879.76	3846.03	513.69	40°20'45.013"N	104°24'06.578"W	2.04	
10499.00	90.340	1.630	6468.23	3974.33	3940.98	516.00	40°20'45.952"N	104°24'06.548"W	1.48	
10594.00	90.220	1.630	6467.77	4068.95	4035.94	518.70	40°20'46.890"N	104°24'06.513"W	0.13	
10689.00	89.940	2.680	6467.63	4163.64	4130.88	522.27	40°20'47.828"N	104°24'06.467"W	1.14	
10784.00	90.590	2.590	6467.19	4258.39	4225.77	526.64	40°20'48.766"N	104°24'06.410"W	0.69	
10879.00	89.480	1.740	6467.14	4353.08	4320.70	530.23	40°20'49.704"N	104°24'06.364"W	1.47	
10982.00	90.490	1.820	6467.16	4455.69	4423.65	533.43	40°20'50.721"N	104°24'06.323"W	0.98	Last BHI Survey Taken
11038.00	90.490	1.820	6466.68	4511.48	4479.62	535.21	40°20'51.274"N	104°24'06.300"W	0.00	Projection to Bit

HOLE & CASING SECTIONS - Ref Wellbore: LATHAM T34-P31-2HC AWB Ref Wellpath: LATHAM T34-P31-2HC AWP

String/Diameter	Start MD [ft]	End MD [ft]	Interval [ft]	Start TVD [ft]	End TVD [ft]	Start N/S [ft]	Start E/W [ft]	End N/S [ft]	End E/W [ft]
9.625in Casing Surface	17.00	797.00	780.00	17.00	796.95	0.00	0.00	2.82	8.17
8.75in Open Hole	797.00	6795.00	5998.00	796.95	6444.85	2.82	8.17	238.01	496.97
7in Casing Intermediate	17.00	6795.00	6778.00	17.00	6444.85	0.00	0.00	238.01	496.97
6.125in Open Hole	6798.00	11038.00	4240.00	6444.89	6466.68	241.01	496.93	4479.62	535.21



Actual Wellpath Report

LATHAM T34-P31-2HC AWP

Page 6 of 7



REFERENCE WELLPATH IDENTIFICATION

Operator	BONANZA CREEK OIL COMPANY	Slot	SLOT#04 LATHAM T34-P31-2HC (342'FSL & 2209'FEL,SEC.2)
Area	COLORADO	Well	LATHAM T34-P31-2HC
Field	WELD COUNTY	Wellbore	LATHAM T34-P31-2HC AWB
Facility	SEC.02-T4N-R63W		

TARGETS

Name	MD [ft]	TVD [ft]	North [ft]	East [ft]	Grid East [US ft]	Grid North [US ft]	Latitude	Longitude	Shape
LATHAM 034-K31-2HC SECTION 2		0.00	-14.57	16.73	3305639.87	1366858.20	40°20'06.864"N	104°24'12.996"W	polygon
LATHAM T34-P31-2HC BHL From Plat (470'FNL & 1613'FEL,SEC.2)		6463.00	4488.29	535.18	3306102.59	1371366.93	40°20'51.360"N	104°24'06.300"W	point
LATHAM 034-K31-2HC HARDLINE (460' SETBACK)		6465.00	-14.57	16.73	3305639.87	1366858.20	40°20'06.864"N	104°24'12.996"W	polygon
LATHAM T34-P31-2HC TARGET		6465.00	207.66	504.60	3306124.94	1367086.44	40°20'09.060"N	104°24'06.696"W	point

WELLPATH COMPOSITION - Ref Wellbore: LATHAM T34-P31-2HC AWB Ref Wellpath: LATHAM T34-P31-2HC AWP

Start MD [ft]	End MD [ft]	Positional Uncertainty Model	Log Name/Comment	Wellbore
17.00	6795.00	NaviTrak (Standard)	BHI/Navitrak MWD 8.75" Hole <17'-6795'>	LATHAM T34-P31-2HC AWB
6795.00	10982.00	NaviTrak (Standard)	BHI/Navitrak MWD 6.125" Hole <6926'-9645'>	LATHAM T34-P31-2HC AWB
10982.00	11038.00	Blind Drilling (std)	Projection to bit	LATHAM T34-P31-2HC AWB



Actual Wellpath Report

LATHAM T34-P31-2HC AWP

Page 7 of 7



REFERENCE WELLPATH IDENTIFICATION

Operator	BONANZA CREEK OIL COMPANY	Slot	SLOT#04 LATHAM T34-P31-2HC (342'FSL & 2209'FEL,SEC.2)
Area	COLORADO	Well	LATHAM T34-P31-2HC
Field	WELD COUNTY	Wellbore	LATHAM T34-P31-2HC AWB
Facility	SEC.02-T4N-R63W		

WELLPATH COMMENTS

MD [ft]	Inclination [°]	Azimuth [°]	TVD [ft]	Comment
17.00	0.000	74.230	17.00	Tie on point
248.00	0.940	74.230	247.99	First BHI Survey Taken
10982.00	90.490	1.820	6467.16	Last BHI Survey Taken
11038.00	90.490	1.820	6466.68	Projection to Bit