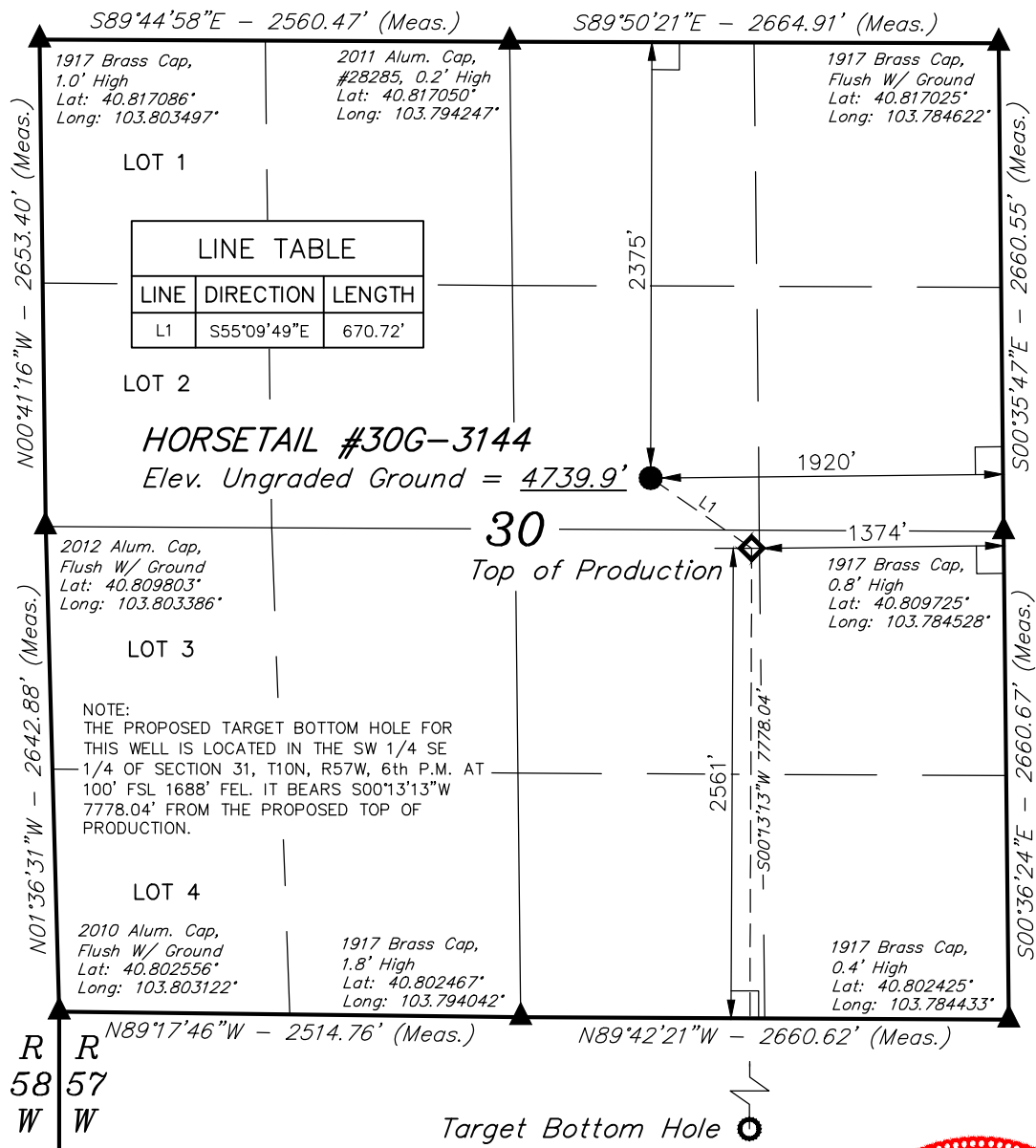


# LEGEND:

- = 90° SYMBOL
- = PROPOSED WELLHEAD.
- = TARGET BOTTOM HOLE.
- = TOP OF PRODUCTION
- = SECTION CORNERS LOCATED.

T10N, R57W, 6th P.M.



PDOP = 1.7



NAD 83 (TOP OF PRODUCTION)	NAD 83 (SURFACE LOCATION)
LATITUDE = 40°48'34.11" (40.809475)	LATITUDE = 40°48'37.90" (40.810528)
LONGITUDE = 103°47'22.16" (103.789489)	LONGITUDE = 103°47'29.31" (103.791475)
NAD 27 (TOP OF PRODUCTION)	NAD 27 (SURFACE LOCATION)
LATITUDE = 40°48'34.16" (40.809489)	LATITUDE = 40°48'37.95" (40.810542)
LONGITUDE = 103°47'20.35" (103.788986)	LONGITUDE = 103°47'27.50" (103.790972)

**BASIS OF BEARINGS**  
BASIS OF BEARINGS IS A G.P.S. OBSERVATION  
**BASIS OF ELEVATION**

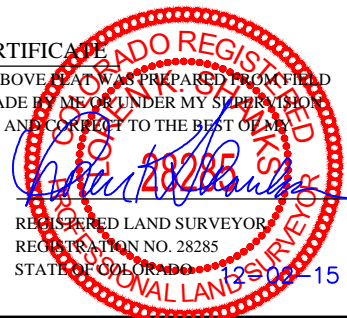
SPOT ELEVATION LOCATED AT THE NORTHEAST CORNER OF SECTION 15, T9N, R58W, 6th P.M. TAKEN FROM THE GATEHOOK SPRING, QUADRANGLE, COLORADO, WELD COUNTY, 7.5 MINUTE QUAD (TOPOGRAPHIC MAP) PUBLISHED BY THE UNITED STATES DEPARTMENT OF THE INTERIOR, GEOLOGICAL SURVEY. SAID ELEVATION IS MARKED AS BEING 4679 FEET.



**UELS, LLC**  
Corporate Office \* 85 South 200 East  
Vernal, UT 84078 \* (435) 789-1017



**CERTIFICATE**  
THIS IS TO CERTIFY THAT THE ABOVE PLAT WAS PREPARED FROM FIELD NOTES OF ACTUAL SURVEYS MADE BY ME OR UNDER MY SUPERVISION AND THAT THE SAME ARE TRUE AND CORRECT TO THE BEST OF MY KNOWLEDGE AND BELIEF.



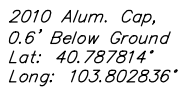
**WHITING OIL & GAS CORP.**

**HORSETAIL #30G-3144 (SURFACE LOCATION)**  
SW 1/4 NE 1/4, SECTION 30, T10N, R57W, 6th P.M.  
WELD COUNTY, COLORADO

SURVEYED BY: JARED CHRISTOPHER, D.W.	DATE: 04-24-15
DRAWN BY: H.K.W.	DATE DRAWN: 02-12-14
SCALE: 1" = 1000'	REVISED: 11-24-15 M.F.D.
<b>WELL LOCATION PLAT</b>	

*T10N, R57W, 6th P.M.*

- ◆ *Top of Production*



A horizontal scale bar with alternating black and white segments. Above the bar, the markings '1000'', '500'', '0'', '500'', and '1000'' are printed from left to right, indicating distances in feet.

THIS IS TO CERTIFY THAT THE ABOVE PLAT WAS PREPARED FROM FIELD NOTES OF ACTUAL SURVEYS MADE BY ME OR UNDER MY SUPERVISION, AND THAT THE SAME ARE TRUE AND CORRECT TO THE BEST OF MY KNOWLEDGE AND BELIEF.

REGISTERED LAND SURVEYOR  
REGISTRATION NO. 28285  
STATE OF COLORADO 12-02-15

SPOT ELEVATION LOCATED AT THE NORTHEAST CORNER OF SECTION 15, T9N, R58W, 6th P.M. TAKEN FROM THE GATEHOOK SPRING, QUADRANGLE, COLORADO, WELD COUNTY, 7.5 MINUTE QUAD (TOPOGRAPHIC MAP) PUBLISHED BY THE UNITED STATES DEPARTMENT OF THE INTERIOR, GEOLOGICAL SURVEY. SAID ELEVATION IS MARKED AS BEING 4679 FEET.



**HORSETAIL #30G-3144 (TARGET BOTTOM HOLE)**  
**SW 1/4 SE 1/4, SECTION 31, T10N, R57W, 6th P.M.**  
**WELD COUNTY, COLORADO**

SURVEYED BY: JARED CHRISTOPHER, D.W.	DATE: 04-24-15
DRAWN BY: H.K.W.	DATE DRAWN: 02-12-14
SCALE: 1" = 1000'	REVISED: 11-24-15 M.F.D.

## WELL LOCATION PLAT



**UELS, LLC**  
Corporate Office \* 85 South 200 East  
Vernal, UT 84078 \* (435) 789-1017