

WPX Energy Rocky Mountain LLC-EBUS

RU 532-7

**Nabors 576**

## **Post Job Summary**

### **Cement Production Casing**

Date Prepared: 02/05/2015

Job Date: 01/31/2015

Submitted by: Jenna Cook – Grand Junction Cement Engineer

## The Road to Excellence Starts with Safety

Sold To #: 300721	Ship To #: 3599679	Quote #: 0021993221	Sales Order #: 0902073043
Customer: WPX ENERGY ROCKY MOUNTAIN LLC-EBUS		Customer Rep: RICK OAKS	
Well Name: YOUNBERG RU		Well #: 532-7	API/UWI #: 05-045-22510-00
Field: RULISON	City (SAP): RIFLE	County/Parish: GARFIELD	State: COLORADO
Legal Description: SE SE-7-7S-93W-1173FSL-1191FEL			
Contractor: NABORS DRLG		Rig/Platform Name/Num: NABORS 576	
Job BOM: 7523			
Well Type: DIRECTIONAL GAS			
Sales Person: HALAMERICA\HB50180		Srvc Supervisor: Jesse Slaughter	
Job			

Formation Name			
Formation Depth (MD)	Top		Bottom
Form Type			BHST
Job depth MD	10122.41ft		Job Depth TVD
Water Depth			Wk Ht Above Floor 4ft
Perforation Depth (MD)	From		To

Well Data										
Description	New / Used	Size in	ID in	Weight lbm/ft	Thread	Grade	Top MD ft	Bottom MD ft	Top TVD ft	Bottom TVD ft
Casing		9.625	9.001	32.3			0	1320		
Casing		4.5	4	11.6			0	10122.41		
Open Hole Section			8.75				1320	10140		

Tools and Accessories									
Type	Size in	Qty	Make	Depth ft		Type	Size in	Qty	Make
Guide Shoe	4.5	1		10122.41		Top Plug	4.5	1	HES
Float Shoe	4.5	1				Bottom Plug	4.5		HES
Float Collar	4.5	1				SSR plug set	4.5		HES
Insert Float	4.5	1				Plug Container	4.5	1	HES
Stage Tool	4.5	1				Centralizers	4.5		HES

Miscellaneous Materials											
Gelling Agt		Conc		Surfactant		Conc		Acid Type		Qty	Conc
Treatment Fld		Conc		Inhibitor		Conc		Sand Type		Size	Qty

Fluid Data										
Stage/Plug #: 1										
Fluid #	Stage Type	Fluid Name	Qty	Qty UoM	Mixing Density lbm/gal	Yield ft3/sack	Mix Fluid Gal	Rate bbl/min	Total Mix Fluid Gal	
1	Fresh Water	Fresh Water	10	bbl	8.34			4		
Fluid #	Stage Type	Fluid Name	Qty	Qty UoM	Mixing Density lbm/gal	Yield ft3/sack	Mix Fluid Gal	Rate bbl/min	Total Mix Fluid Gal	
2	EconoCem GJ2	ECONOCHEM (TM) SYSTEM	280	sack	12.7	1.674		6	8.69	

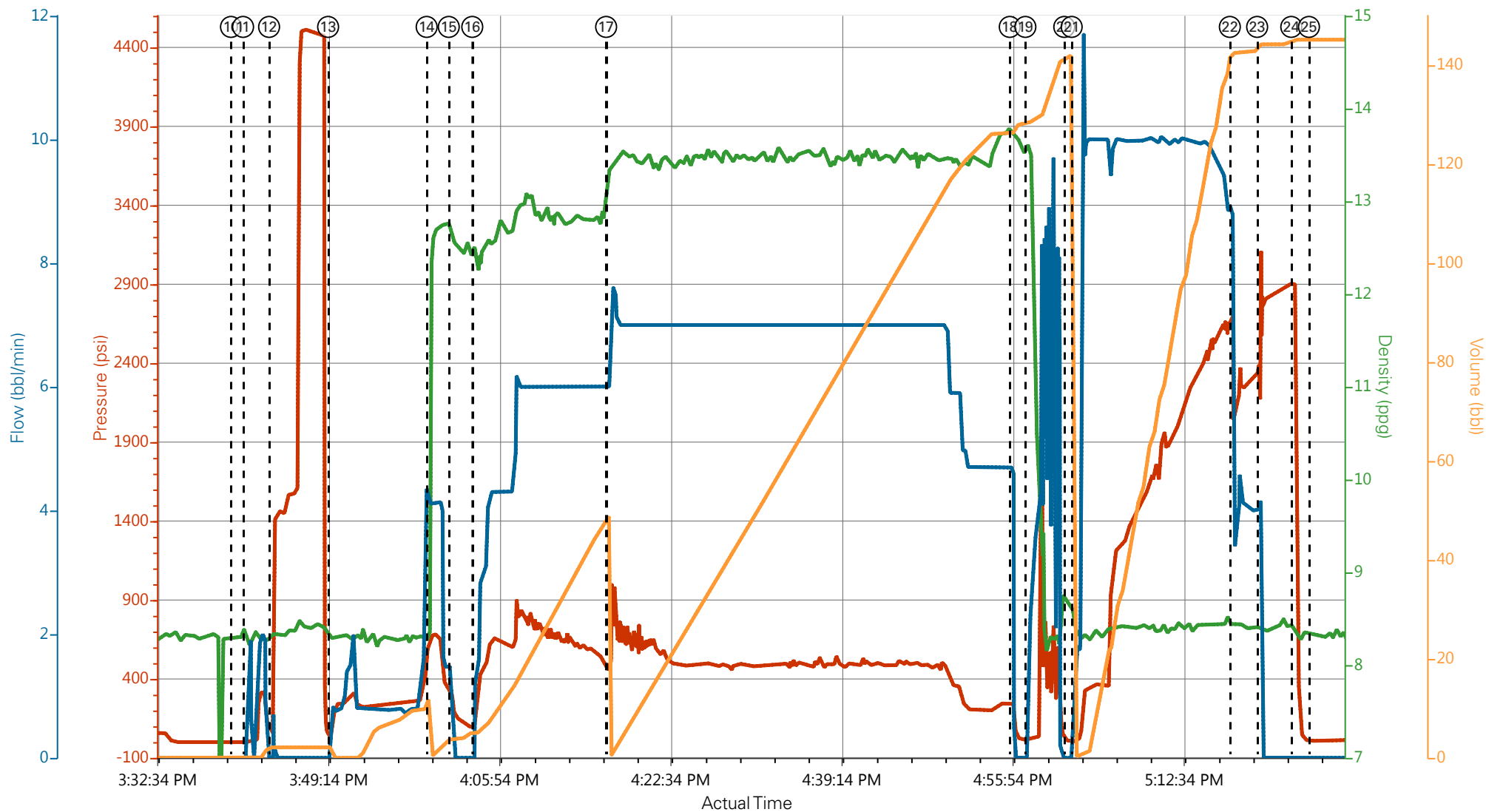
8.69 Gal		FRESH WATER							
Fluid #	Stage Type	Fluid Name	Qty	Qty UoM	Mixing Density lbm/gal	Yield ft3/sack	Mix Fluid Gal	Rate bbl/min	Total Mix Fluid Gal
3	ThermaCem GJ2	THERMACEM (TM) SYSTEM	790	sack	13.5	1.74		7	7.61
7.72 Gal		FRESH WATER							
Fluid #	Stage Type	Fluid Name	Qty	Qty UoM	Mixing Density lbm/gal	Yield ft3/sack	Mix Fluid Gal	Rate bbl/min	Total Mix Fluid Gal
4	Fresh Water Displacement	Fresh Water KCL Displacement	156.5	bbl	8.34			10	
Cement Left In Pipe		Amount	28.1 ft		Reason		Shoe Joint		
Comment									

## 1.1 Job Event Log

Type	Seq. No.	Activity	Date	Time	Source	DH Density (ppg)	Comb Pump Rate (bbl/min)	PS Pump Press (psi)	Pump Stg Tot (bbl)	Comment
Event	1	Call Out	1/31/2015	03:00:00	USER					
Event	2	Pre-Convoy Safety Meeting	1/31/2015	05:50:00	USER					WITH ALL HES PERSONNEL
Event	3	Crew Leave Yard	1/31/2015	06:00:00	USER					
Event	4	Arrive At Loc	1/31/2015	09:00:00	USER					RIG WAS RUNNING CASING UPON HES ARRIVAL
Event	5	Assessment Of Location Safety Meeting	1/31/2015	11:30:00	USER					WITH ALL HES PERSONNEL
Event	6	Other	1/31/2015	11:40:00	USER					
Event	7	Pre-Rig Up Safety Meeting	1/31/2015	11:50:00	USER					WITH ALL HES PERSONNEL
Event	8	Rig-Up Equipment	1/31/2015	12:00:00	USER					
Event	9	Pre-Job Safety Meeting	1/31/2015	15:15:00	USER					WITH ALL PERSONNEL
Event	10	Start Job	1/31/2015	15:40:00	USER					TD 10140 FT, TP 10122.41 FT, SHOE 28.10 FT, CSG 4 1/2 IN 11.6 LB/FT, HOLE 8 3/4 IN, MUD WT 11.5 PPG 60 VIS.
Event	11	Prime Pumps	1/31/2015	15:41:10	COM7	8.33	2.0	320.0	2.0	FRESH WATER
Event	12	Test Lines	1/31/2015	15:43:42	COM7					TESTED LINES TO 4520 PSI PRESSURE HOLDING
Event	13	Pump Spacer 1	1/31/2015	15:49:27	COM7	8.33	4.0	620.0	10.0	FRESH WATER
Event	14	Pump Lead Cement	1/31/2015	15:59:03	COM7	12.7	4.0	350.0	8.0	280 SKS AT 12.7 PPG, 1.67 FT3/SK, 8.69 GAL/SK.
Event	15	Shutdown	1/31/2015	16:01:12	USER					SHUTDOWN DUE TO POOR BULK DELIVERY
Event	16	Resume	1/31/2015	16:03:30	USER	12.7	6.0	450.0	75.3	RESUME RATE
Event	17	Pump Tail Cement	1/31/2015	16:16:32	COM7	13.5	7.0	260.0	244.8	790 SKS AT 13.5 PPG, 1.74 FT3/SK, 7.61 GAL/SK.
Event	18	Shutdown	1/31/2015	16:55:51	USER					

Event	19	Clean Lines	1/31/2015	16:57:23	COM7	8.33	5.0	28.0	10.0	CLEANED LINES TO RESERVE PIT
Event	20	Drop Top Plug	1/31/2015	17:01:10	USER					PLUG LAUNCHED
Event	21	Pump Displacement	1/31/2015	17:01:53	COM7	8.5	10.0	2180.0	156.5	FRESH WATER WITH 15 BAGS OF KCL, MMCR IN FIRST 10 BBLS, 3 BAGS BE-6 IN NEXT 30 BBLS
Event	22	Slow Rate	1/31/2015	17:17:18	USER	8.5	4.0	2350.0	146.5	SLOWED RATE 10 BBLS PRIOR TO CALCULATED DISPLACEMENT.
Event	23	Bump Plug	1/31/2015	17:19:57	COM7			2900.0		
Event	24	Check Floats	1/31/2015	17:23:17	USER					FLOATS HOLDING. HES RETURNED 1 /34 BBLS H2O TO PUMP.
Event	25	End Job	1/31/2015	17:25:00	COM7					PIPE WAS RECIPROCATED DURING JOB, GOOD CIRCULATION THROUGHOUT JOB.
Event	26	Pre-Rig Down Safety Meeting	1/31/2015	17:30:00	USER					WITH ALL HES PERSONNEL
Event	27	Rig-Down Equipment	1/31/2015	17:40:00	USER					
Event	28	Pre-Convoy Safety Meeting	1/31/2015	18:50:00	USER					WITH ALL HES PERSONNEL
Event	29	Crew Leave Location	1/31/2015	19:00:00	USER					
Event	30	Comment	1/31/2015	19:01:00	USER					THANK YOU FOR USING HALLIBURTON CEMENT DEPARTMENT. JESSE SLAUGHTER AND CREW.

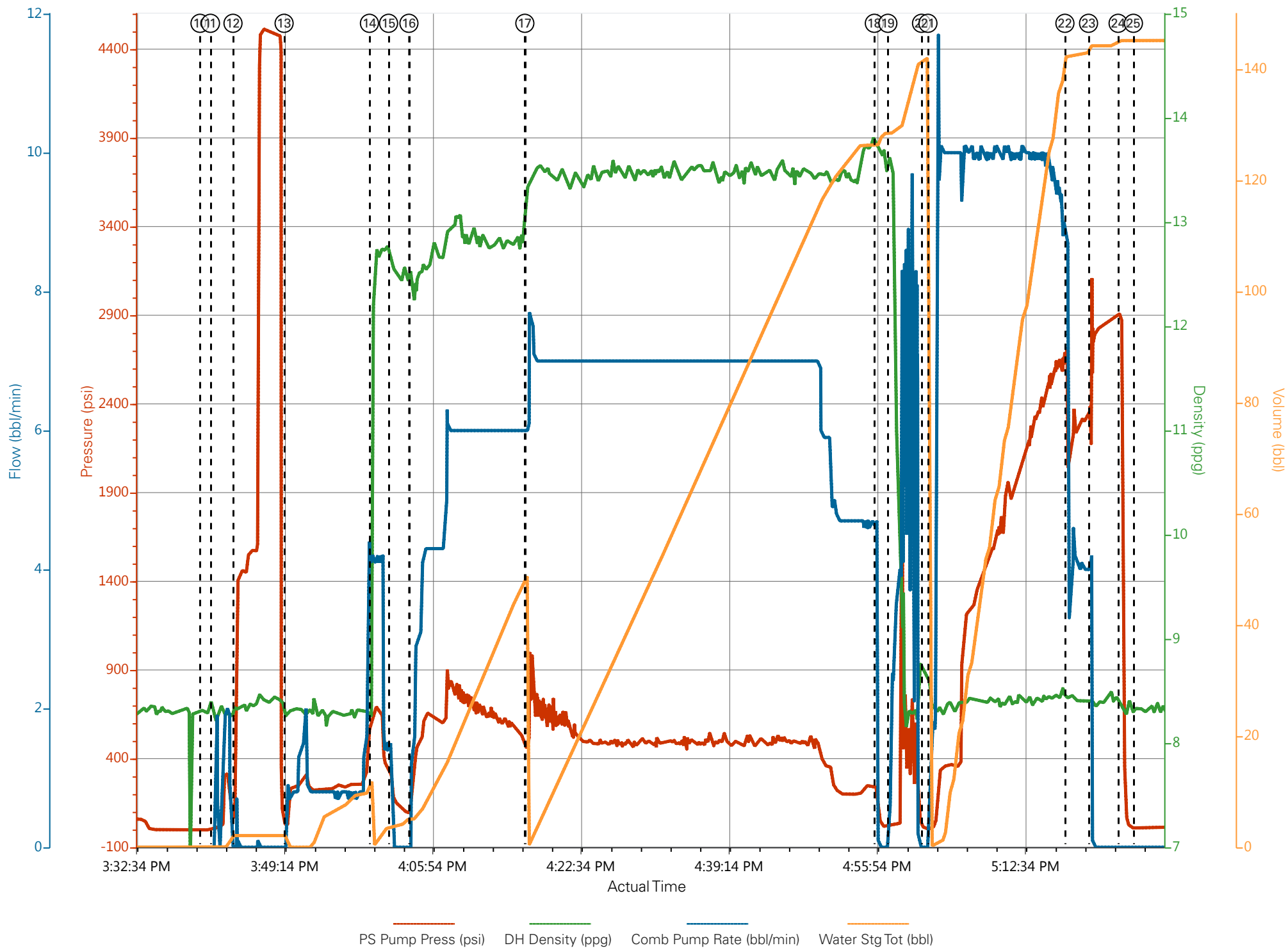
# WPX RU 532-7 4.5" Production



PS Pump Press (psi) DH Density (ppg) Comb Pump Rate (bbl/min) Water Stg Tot (bbl)

① Call Out n/a;n/a;n/a;n/a	⑨ Pre-Job Safety Meeting 59;0.55;0;0	⑰ Pump Tail Cement 461;13.36;6;0.02	25 End Job 8;8.32;0;145.17
② Pre-Convoy Safety Meeting n/a;n/a;n/a;n/a	⑩ Start Job -2;8.32;0;0	⑱ Shutdown 236;13.72;4.7;126.33	26 Pre-Rig Down Safety Meeting 16;8.26;0;145.95
③ Crew Leave Yard n/a;n/a;n/a;n/a	⑪ Prime Pumps -1;8.31;0;0	⑲ Clean Lines 28;13.58;1.8;128.5	27 Rig-Down Equipment n/a;n/a;n/a;n/a
④ Arrive At Loc n/a;n/a;n/a;n/a	⑫ Test Lines 60;8.32;0;2.12	20 Drop Top Plug 7;8.65;0;141.74	28 Pre-Convoy Safety Meeting n/a;n/a;n/a;n/a
⑤ Assessment Of Location Safety Meeting n/a;n/a;n/a;n/a	⑬ Pump H2O Spacer 22;8.31;0;2.12	21 Pump Displacement 2;8.5;1.8;0.17	29 Crew Leave Location n/a;n/a;n/a;n/a
⑥ Spot Equipment n/a;n/a;n/a;n/a	⑭ Pump Lead Cement 618;9.47;4.1;0.02	22 Slow Rate 2041;8.4;4.8;142.52	30 Comment n/a;n/a;n/a;n/a
⑦ Pre-Rig Up Safety Meeting n/a;n/a;n/a;n/a	⑮ Shutdown 265;12.56;0;3.74	23 Bump Plug 2216;8.4;4.1;144.24	
⑧ Rig-Up Equipment n/a;n/a;n/a;n/a	⑯ Resume 261;12.45;1.4;5.05	24 Check Floats 2909;8.36;0;145.17	

# WPX RU 532-7 4.5" Production



# HALLIBURTON

## Water Analysis Report

Company: WILLIAMS PRODUCTION

Submitted by: JESSE SLAUGHTER

Attention: LAB

Lease YOUBERG RU

Well # 532-7

Date: 1/31/2015

Date Rec.:

S.O.# 902073043

Job Type: PRODUCTION

Specific Gravity	<i>MAX</i>	<b>1</b>
pH	<i>8</i>	<b>6</b>
Potassium (K)	<i>5000</i>	<b>250</b> Mg / L
Calcium (Ca)	<i>500</i>	<b>120</b> Mg / L
Iron (FE2)	<i>300</i>	<b>0</b> Mg / L
Chlorides (Cl)	<i>3000</i>	<b>0</b> Mg / L
Sulfates (SO <sub>4</sub> )	<i>1500</i>	<b>UNDER 200</b> Mg / L
Chlorine (Cl <sub>2</sub> )		<b>0</b> Mg / L
Temp	<i>40-80</i>	<b>45</b> Deg
Total Dissolved Solids		<b>10</b> Mg / L

Respectfully: JESSE SLAUGHTER

Title: CEMENTING SUPERVISOR

Location: Grand Junction, CO

NOTICE:

This report is limited to the described sample tested. Any person using or relying on this report agrees that Halliburton shall not be liable for any loss or damage whether due to act or omission resulting from such report or its