



FILE NO:	CH095181
API NO:	05045225100000
COMPANY	WPX ENERGY
WELL	YOUBERG RU 632-7
FIELD	RULISON
COUNTY	GARFIELD
STATE	COLORADO

Version	LOCATION:	OTHER SERVICES
7 7S 93W	SHL: 1173' FSL & 1191' FEL	BOND LOG
RU 44-7 PAD	BHL: 2306' FNL & 1989' FEL (SWNE)	
NABORS 576	SEC 7 TWP 7S RGE 93W	

PERMANENT DATUM	GL	ELEVATION	7917 FT	KB	7943 FT
LOG MEASURED FROM	KB	26 FT	ABOVE P.D.	DF	
DRILL. MEAS. FROM	KB			GL	7917 FT

DATE		08-Mar-2015	
RUN	TRIP	1	1
SERVICE ORDER	US095181		
DEPTH DRILLER	10083 FT		
DEPTH LOGGER	10059 FT		
BOTTOM LOGGED INTERVAL	10049 FT		
TOP LOGGED INTERVAL	6093 FT		
TIME STARTED	06:30		
TIME FINISHED	12:00		
OPERATOR RIG TIME	5.5 HOURS		
TYPE OF FLUID IN HOLE	WATER		
FLUID DENSITY	NA		
FLUID SALINITY	NA		
FLUID LEVEL	68 FT		
LOGGED CEMENT TOP	NA		
WELLHEAD PRESSURE	0 PSI		
MAXIMUM HOLE DEVIATION	NA		
NOMINAL LOGGING SPEED	10 F/MN		
MAX. RECORDED TEMP.	252 DEGF		
REFERENCE LOG	BAKER HUGHES BOND LOG		
REFERENCE LOG DATE	06-Mar-2015		
EQUIP. NO.	LOCATION	4271	GRAND JCT.
RECORDED BY	FLOYD RENEAU		
WITNESSED BY	TED VONFELDT		

IN MAKING INTERPRETATIONS OF LOGS OUR EMPLOYEES WILL GIVE THE CUSTOMER THE BENEFIT OF THEIR BEST JUDGEMENT. BUT SINCE ALL INTERPRETATIONS ARE OPINIONS BASED ON INFERENCES FROM ELECTRICAL OR OTHER MEASUREMENTS, WE CANNOT, AND WE DO NOT GUARANTEE THE ACCURACY OR CORRECTNESS OF ANY INTERPRETATION. WE SHALL NOT BE LIABLE OR RESPONSIBLE FOR ANY LOSS, COST, DAMAGES, OR EXPENSES WHATSOEVER INCURRED OR SUSTAINED BY THE CUSTOMER RESULTING FROM ANY INTERPRETATION MADE BY ANY OF OUR EMPLOYEES.

BOREHOLE RECORD		
BIT SIZE	FROM	TO
13.5 IN	26 FT	1323 FT
8.75 IN	1323 FT	10083 FT

CASING RECORD				
SIZE	WEIGHT	GRADE	FROM	TO
9.6.25 IN			26 FT	1323 FT
4.5 IN	11.6 LB/F	I-80	26 FT	10083 FT

REMARKS

RUN 1 TRIP 1: All data on this log is shifted and depth matched using the Gamma Ray curve to the Baker Hughes bond log dated 3/6/2015 at the client's request.

The amount of linear shift is 4 feet.

Logged in PNC-3D mode.

BHT = 252 degF

SJ = 6816'-6838'

Thanks you for choosing Baker-Hughes.

EQUIPMENT DATA

RUN	TRIP	TOOL	SERIES NO.	SERIAL NO.	POSITION
1	1	PCM	8250EA	Z166326	FREE
1	1	TEL/CCL	8248ED	10586851	FREE
1	1	GR	2812LA	10274382	FREE
1	1	RPM	8281EA	10273848	FREE
1	1	RPM	8283PA	10203151	FREE
1	1	RPM	8281FA	10460082	FREE
1	1	TEMP	8255XA	Z120516	FREE

MAIN SECTION PNC-3D MODE

ECLIPS 6.2wu1 PC-ECLIPS General Release Rel 6.2w Update 1 Fri Apr 25 10:54:53 Central Daylight Time 2014
Updates: 46 Patches: 5

Plotted: Mon Mar 09 13:11:53 2015

PARAMETER AND FILTER SUMMARY REPORT

FILE: C:\dat1a\095181\354h02.prm
LOGGING MODE: DEPTH DIRECTION: UP
TOP DEPTH: 6069.500 ft BOTTOM DEPTH: 10065.000 ft

SYMMETRIC FILTER

MEASUREMENT TYPE	PARAMETER	VALUE	UNITS	INTERVAL (ft)	
GR	FILTER ()	medium (1)		TOP	BOTTOM

RPM PROCESSING

MEASUREMENT TYPE	PARAMETER	VALUE	UNITS	INTERVAL (ft)	
PNC Parameters	BOREHOLE CONTENTS	FLUID		TOP	BOTTOM
	OPEN/CASED HOLE	CASED HOLE		"	"
	BOREHOLE SIZE	8.50	in	"	"
	CASING SIZE	4.50	in	"	"
	MATRIX	SANDSTONE		"	"
	CORRECTION BUFFER	11		"	"

CURVE DESCRIPTION REPORT

CURVE NAME	CREATION DATE	CURVE DESCRIPTION
F1:CCL	Mar 8 09:52:36 2015	CASING COLLAR LOCATOR
F1:GR	Mar 8 09:52:36 2015	GAMMA RAY
F1:ISS	Mar 8 09:52:36 2015	INELASTIC SHORT SPACE COUNT RATE
F1:LS	Mar 8 09:52:36 2015	LONG SPACE COUNT RATE
F1:RATO	Mar 8 09:52:36 2015	SHORT/LONG SPACE COUNT RATE RATIO
F1:RICS	Mar 8 09:52:36 2015	SHORT SPACE INELASTIC TO CAPTURE COUNT RATE RATIO (ISS/CSS)
F1:SGFC	Mar 8 09:52:36 2015	CORRECTED FORMATION SIGMA
F1:SS	Mar 8 09:52:36 2015	SHORT SPACE COUNT RATE

CURVE MEASURE POINT OFFSET

CURVE	OFFSET (ft)	CURVE	OFFSET (ft)	CURVE	OFFSET (ft)	CURVE	OFFSET (ft)
CCL	25.00	ISS	12.75	RATO	12.75	SGFC	12.75
GR	22.75	LS	12.75	RICS	12.75	SS	12.75

Presentation : BHUGHES-06627:C:\dat1a\095181\532_RPM_MAIN.fvpdf [5"/100' Scale]
Plot Interval : 6050 - 10065 Feet

Data File 1 : F1 : BHUGHES-06627:C:\dat1a\095181\532_RPM_MAIN.xtf
Created On : Mar 8 09:52:36 2015
Company : WPX ENERGY
Well : XCHURBEC BH 532.7

Well : YOUNBERG RU 552-7
Field : RULISON
File Interval : 26.25 - 10065.5 Feet
OCT : n354h

GR BACKUP

ISS [iss]

0 1E+006

(1)

GAMMA RAY [gr]

0 150

(gAPI)

FEET

CCL
(mV)

6100

LS [ls]

0 29000

(1)

SS [ss]

0 290000

(1)

RATO [rato]

17 0

(1)

RICS [rics]

37 7

(1)

SGFC [sgfc]

60 0

(1)

GR

ISS

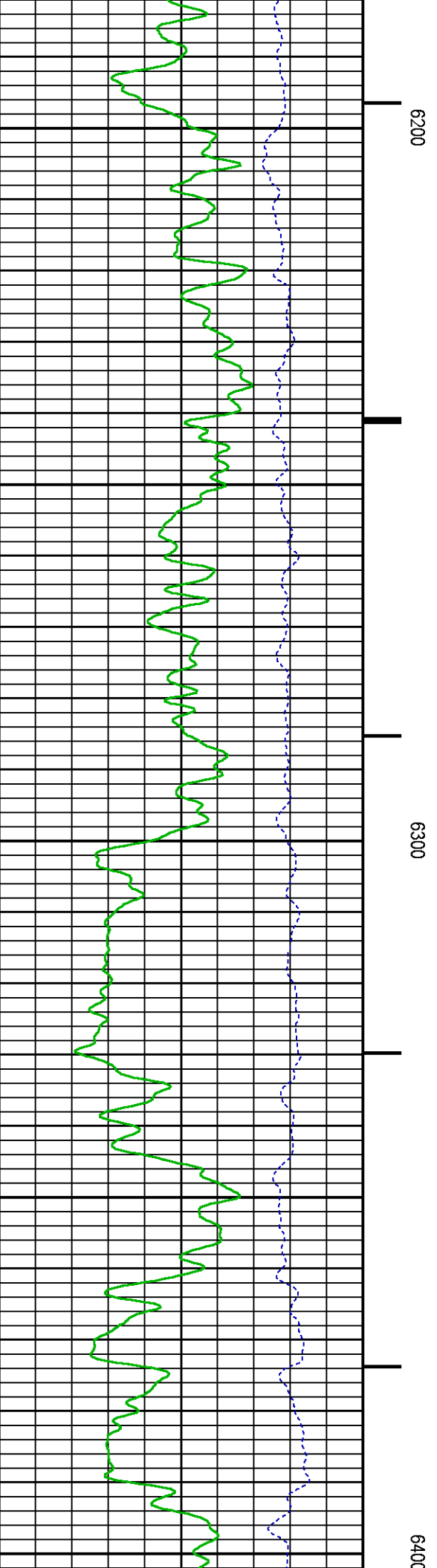
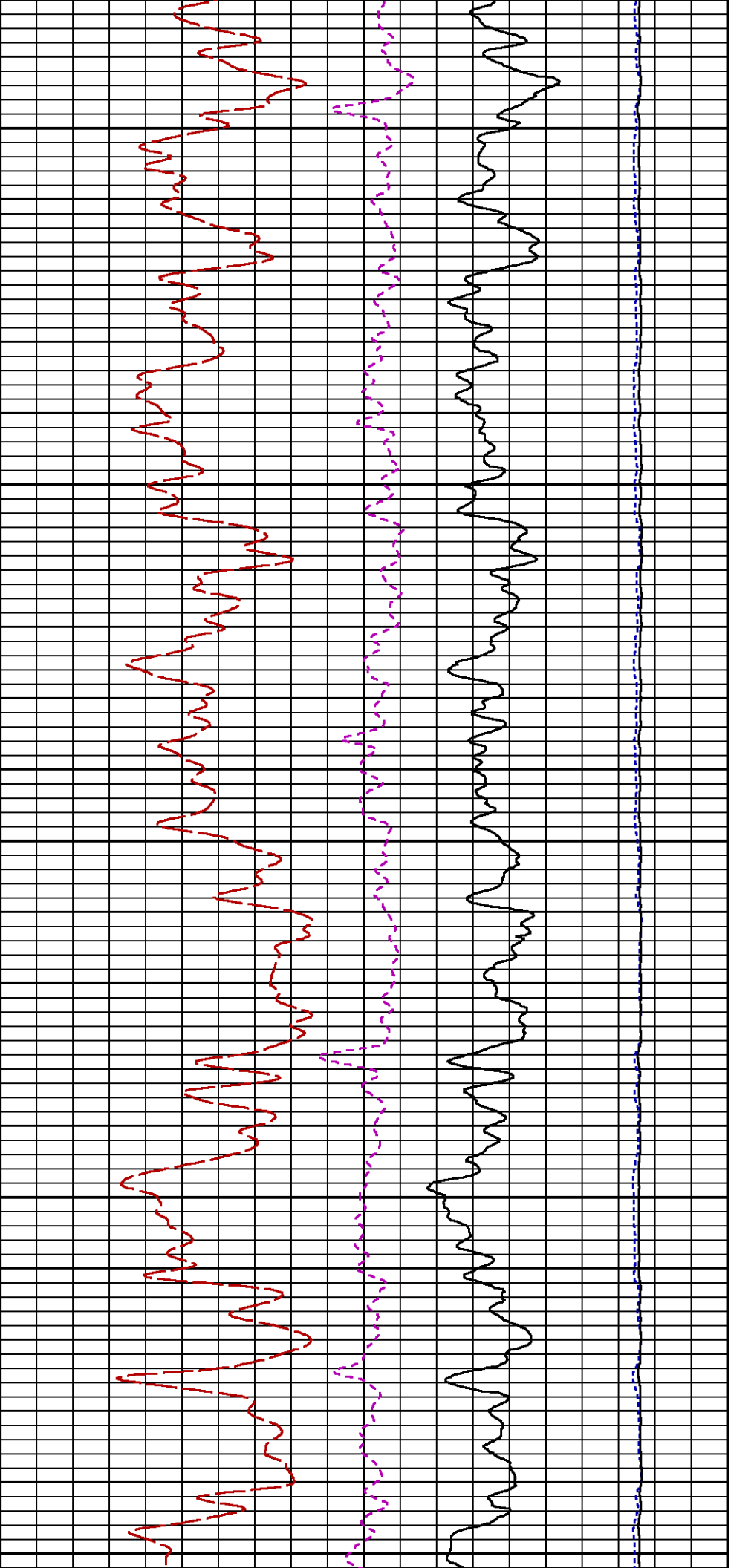
RATO

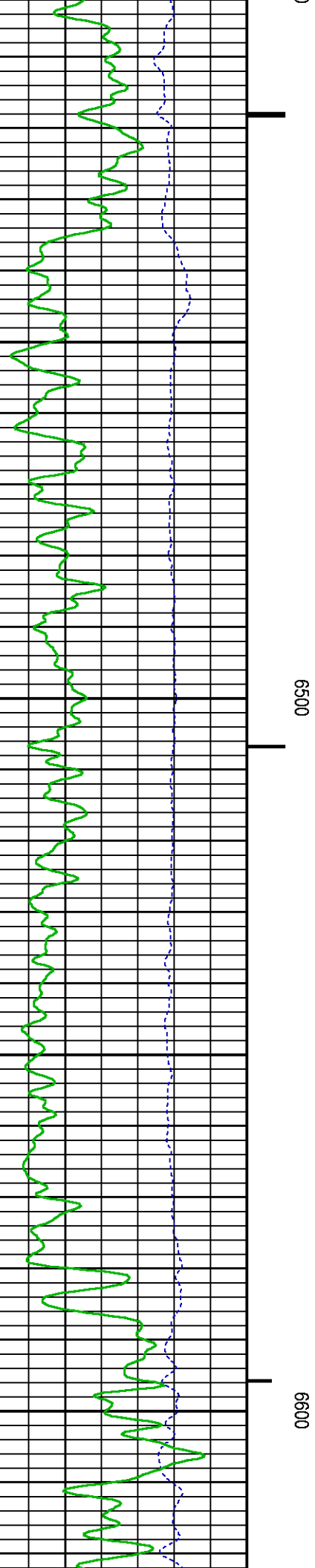
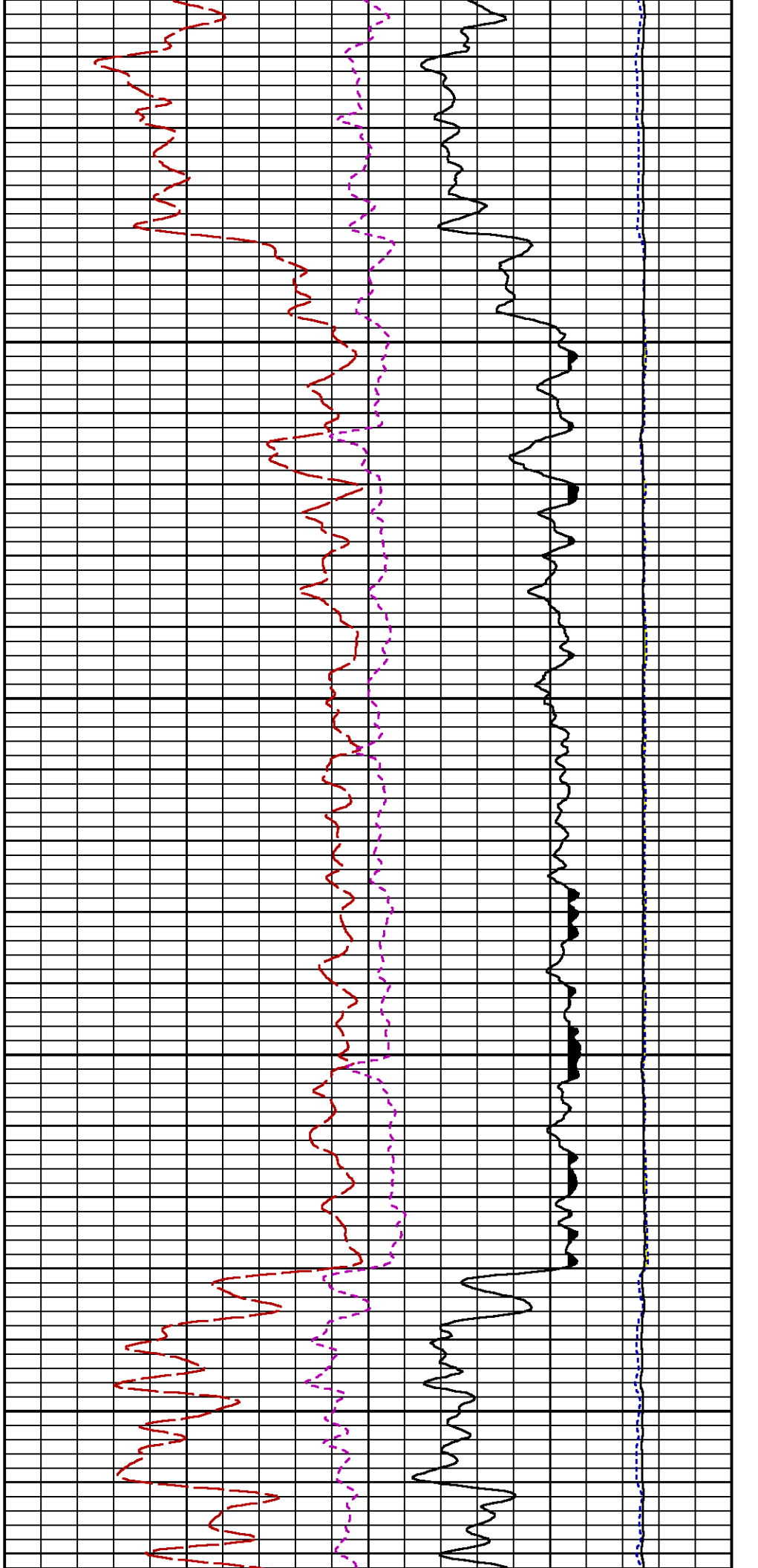
RICS

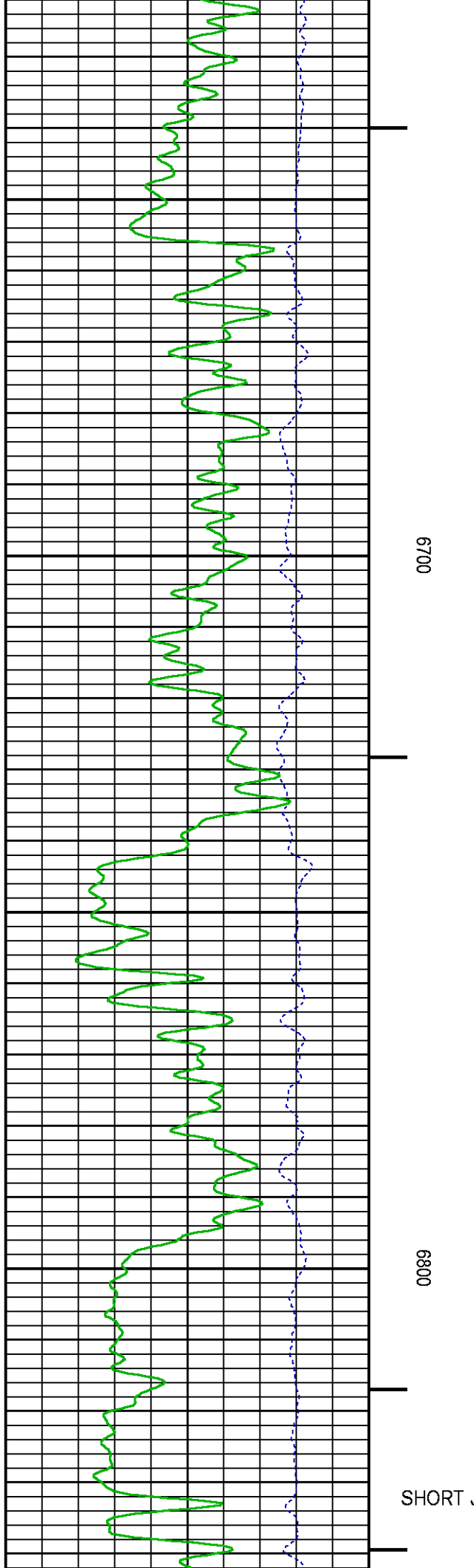
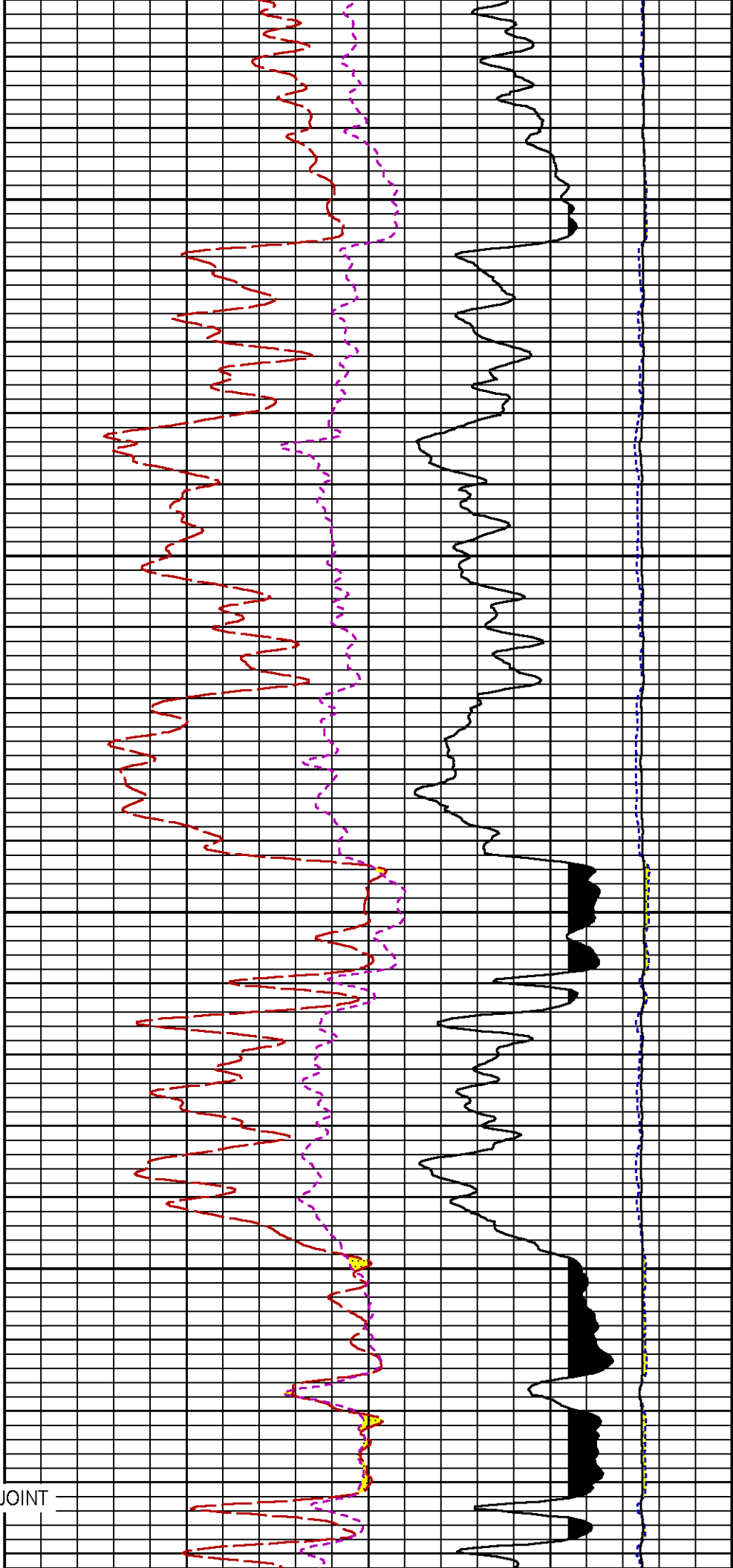
LS

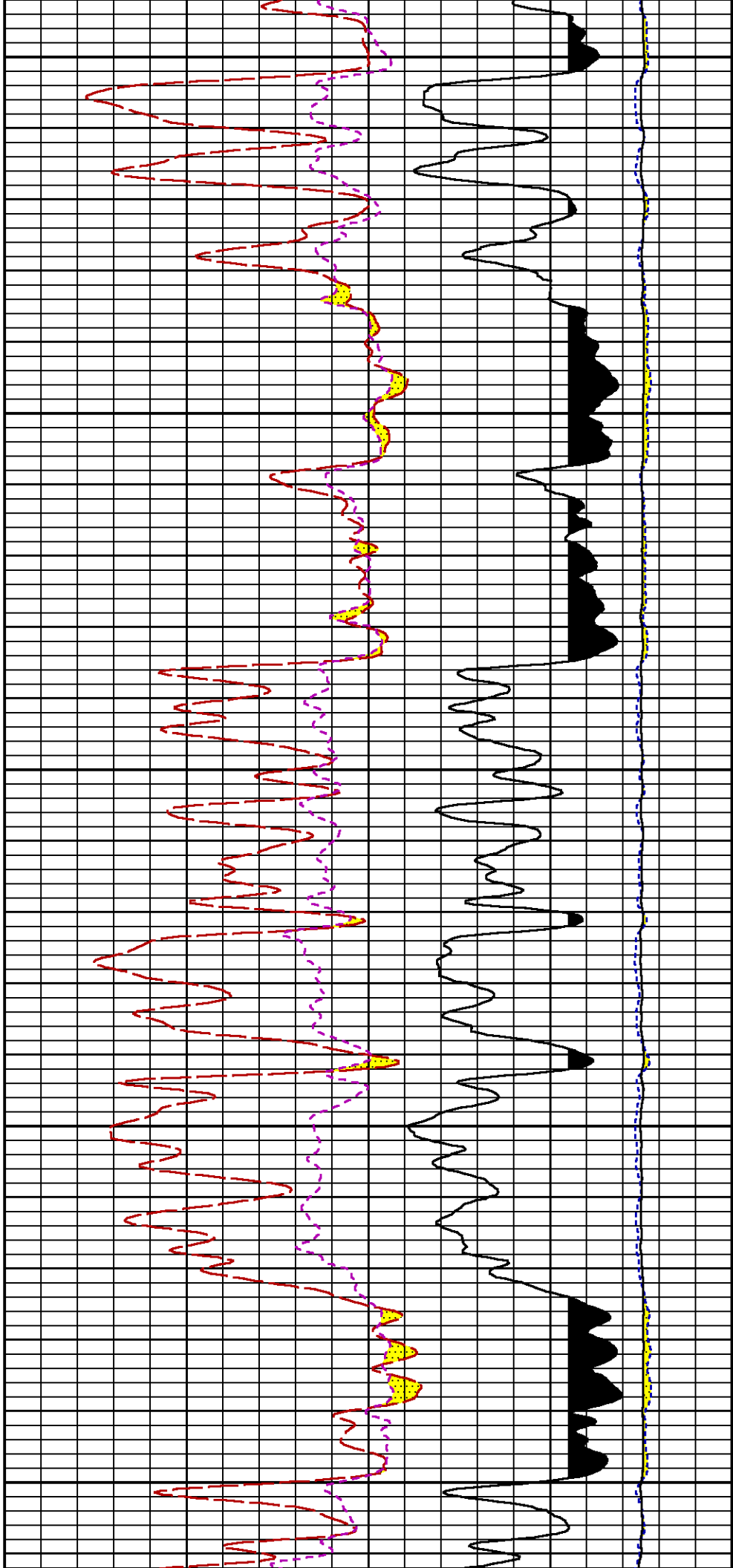
SS

SGFC



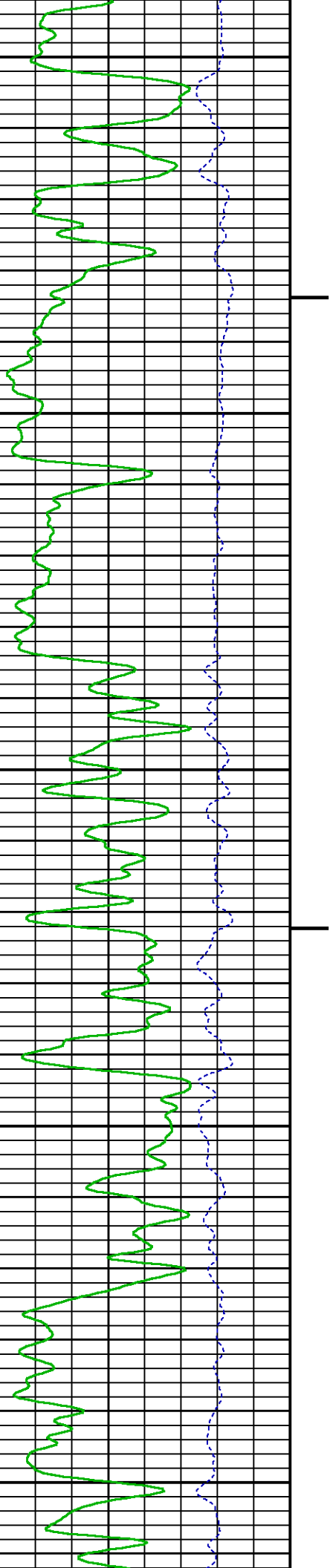


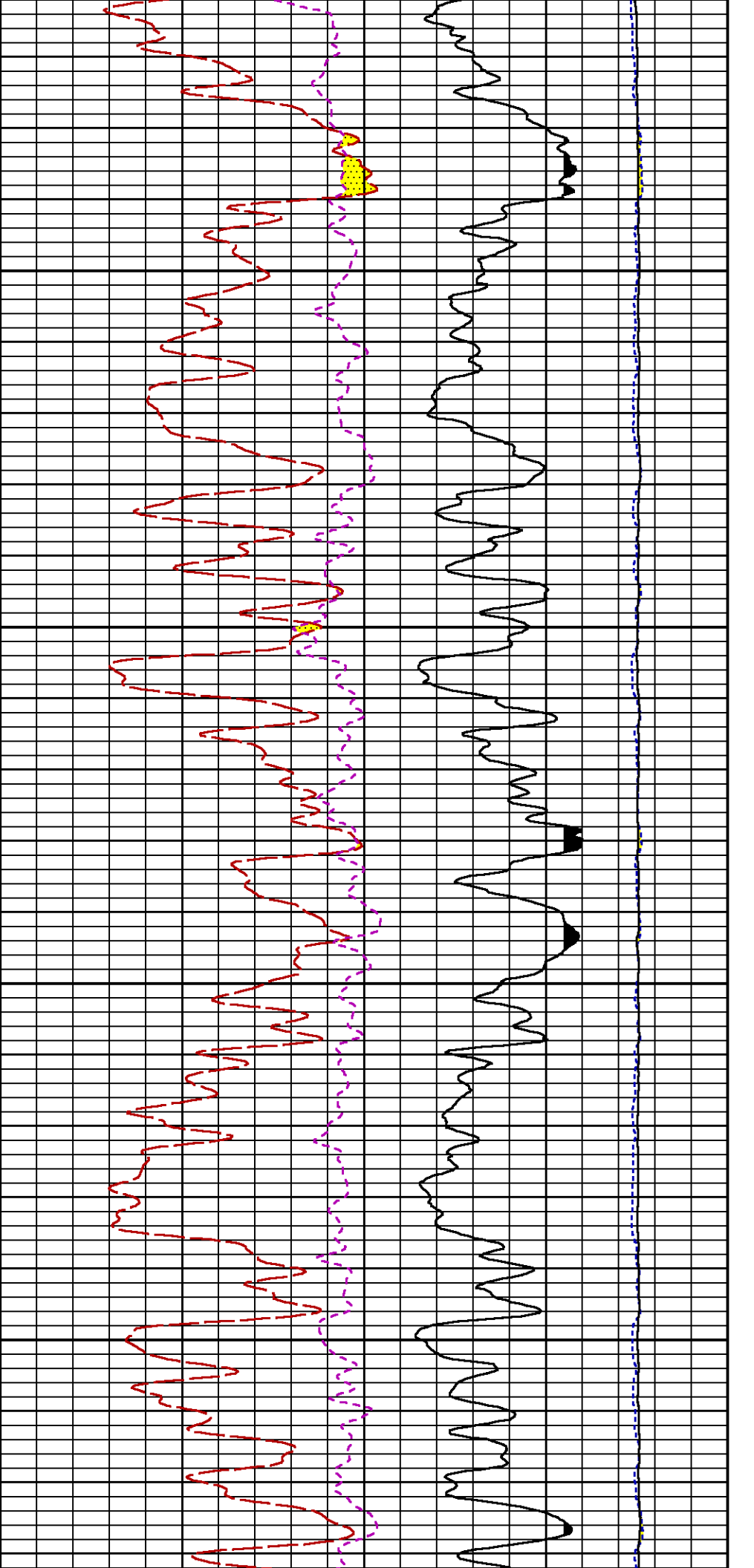




6900

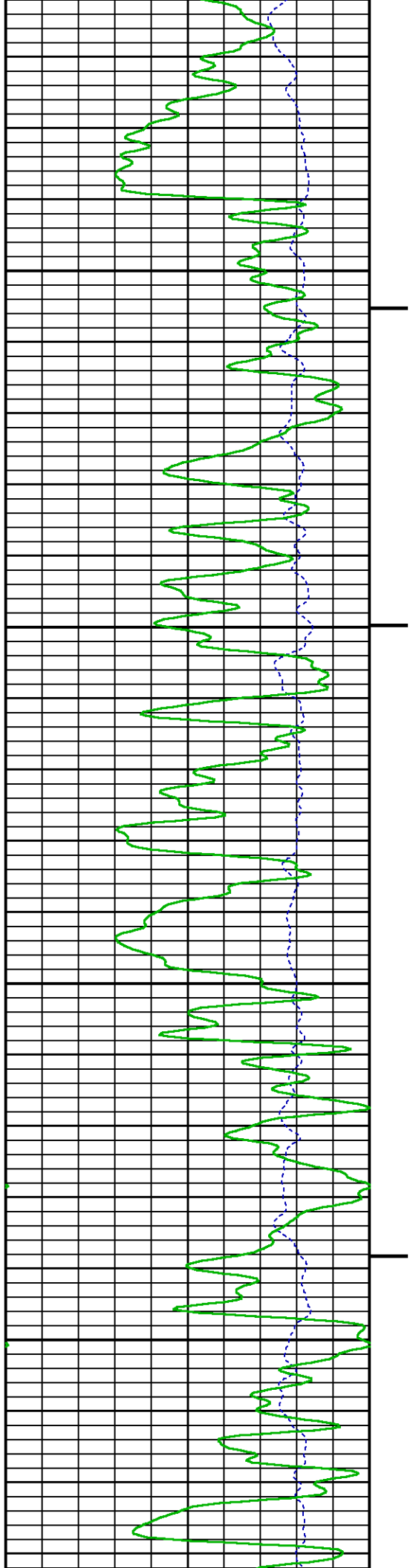
7000

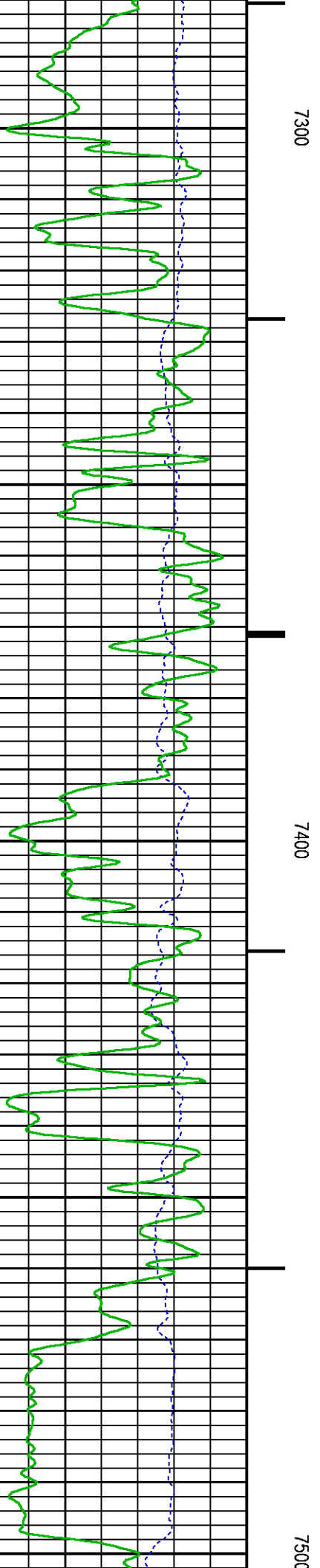
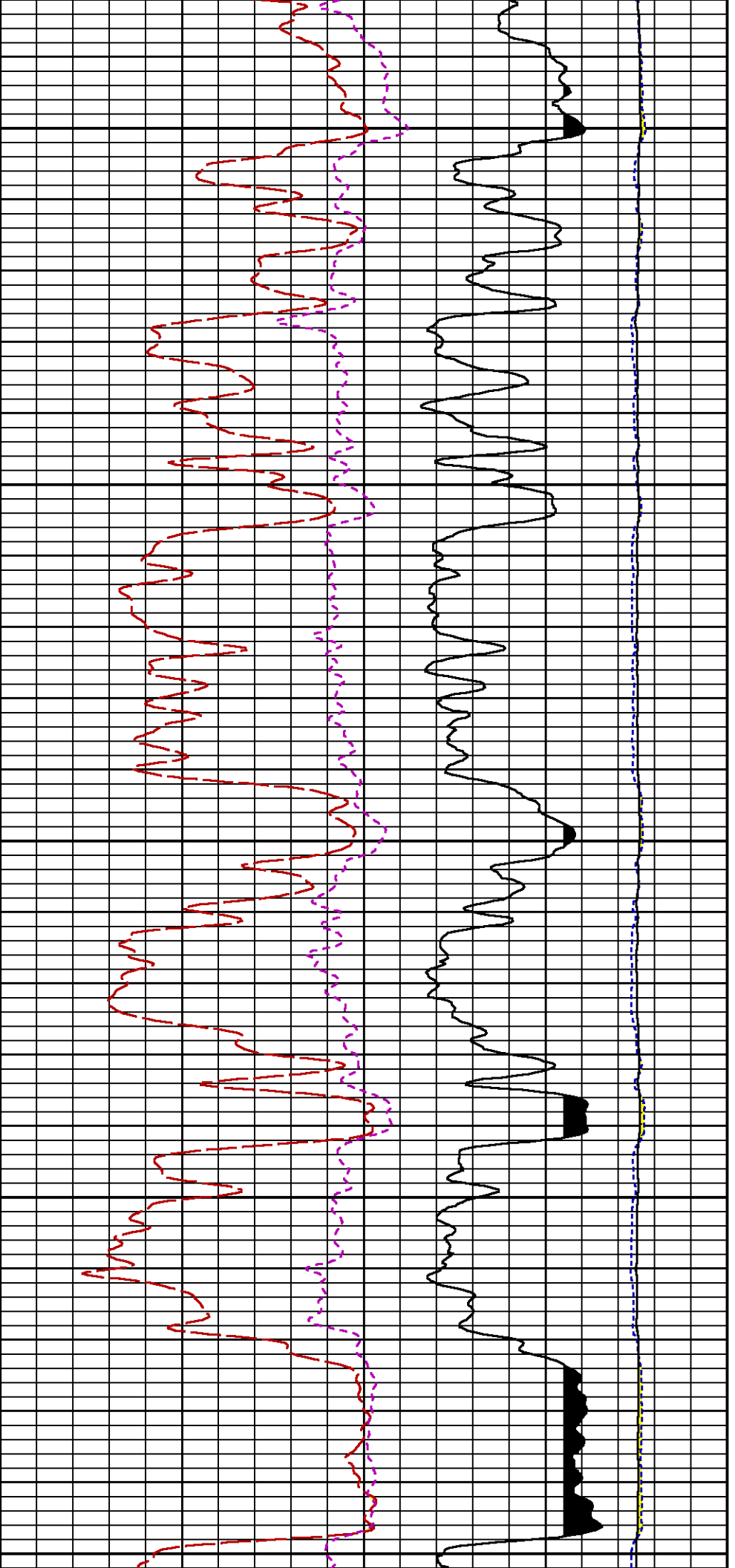


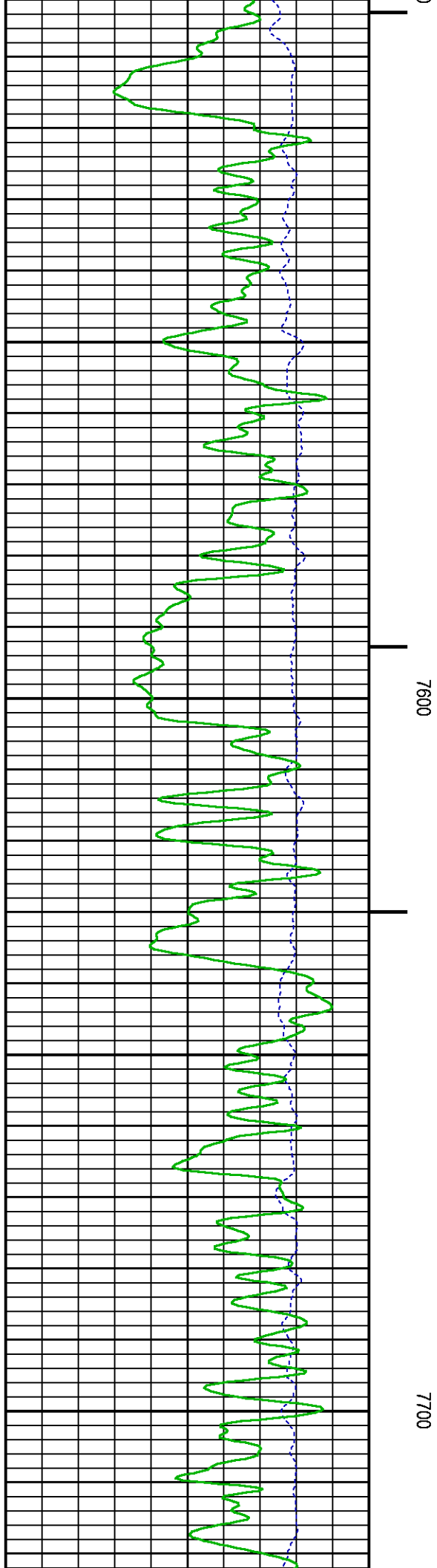
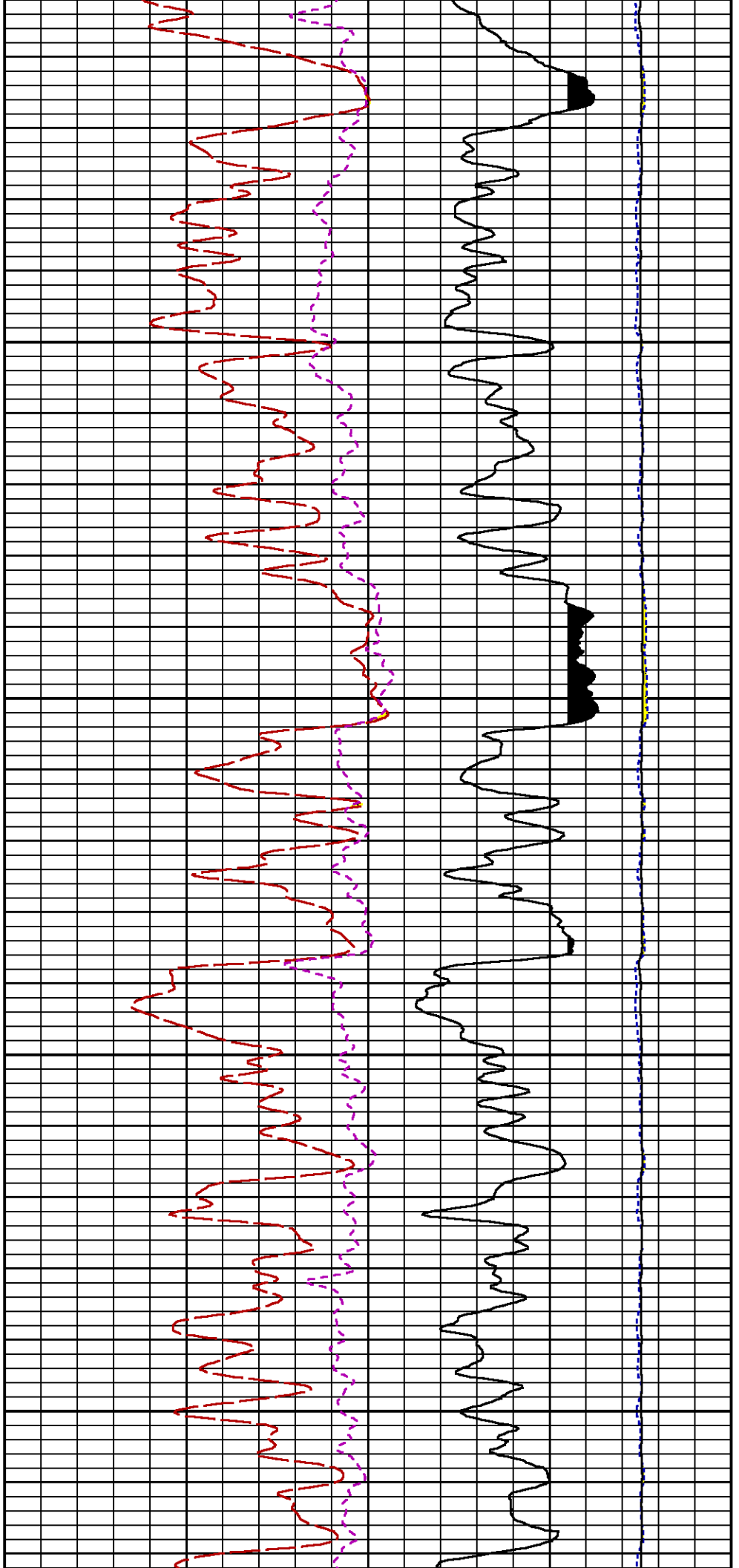


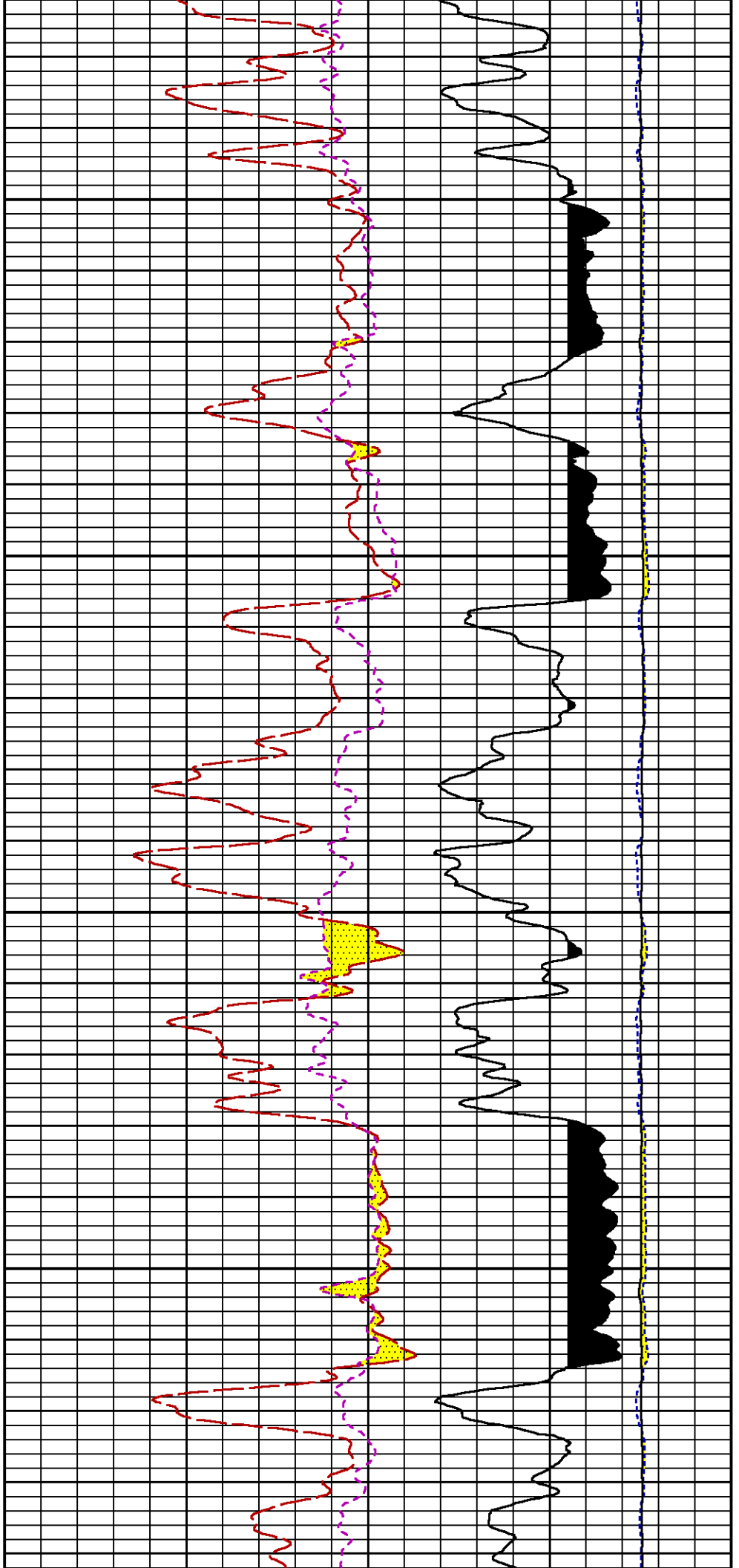
7100

7200



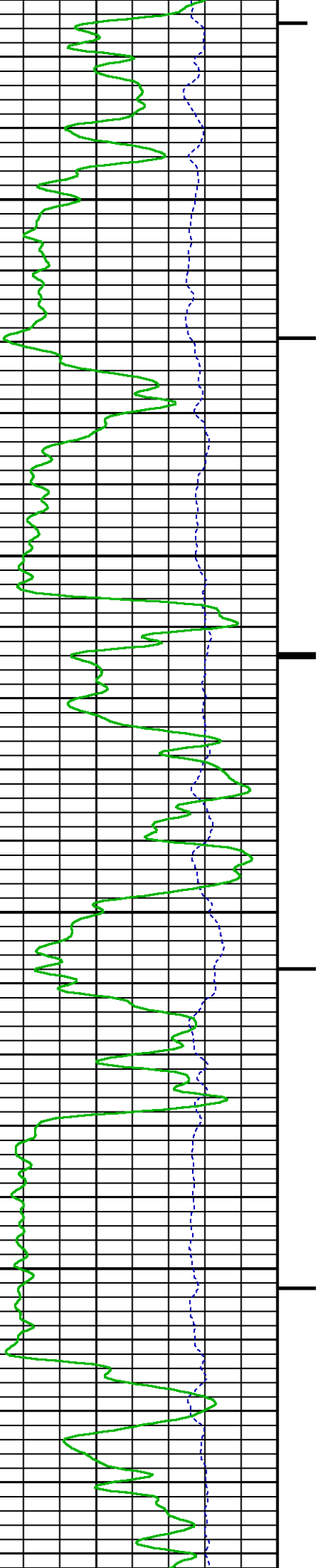


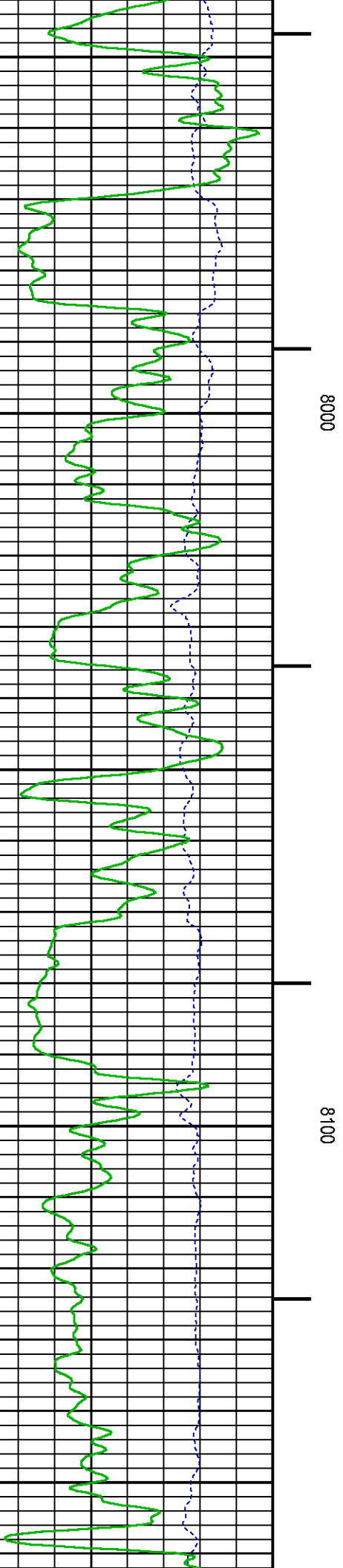
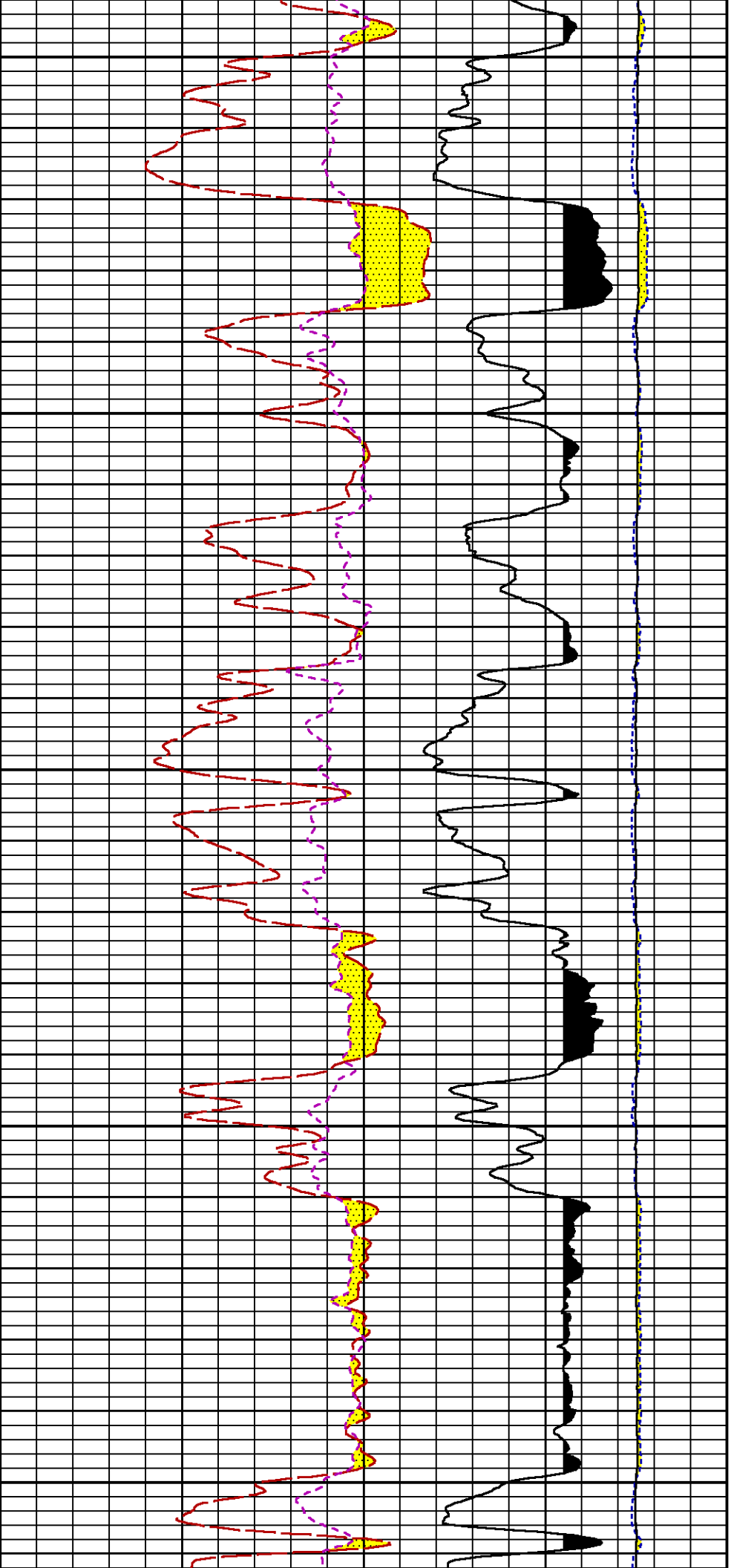


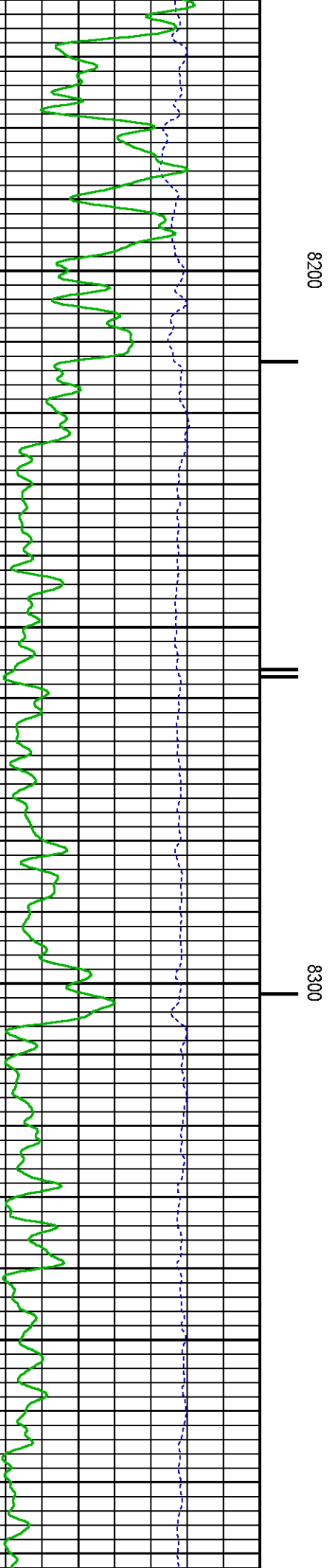
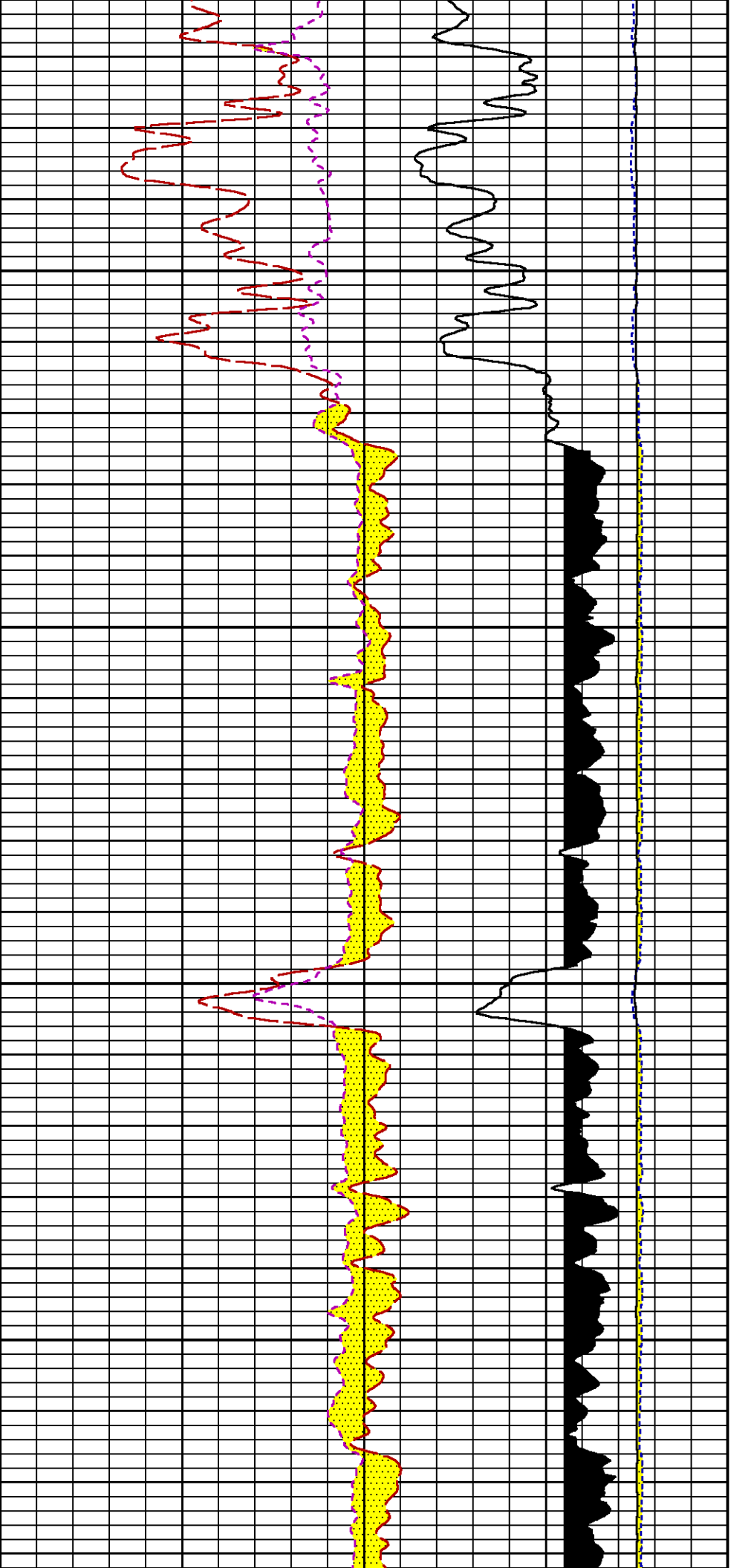


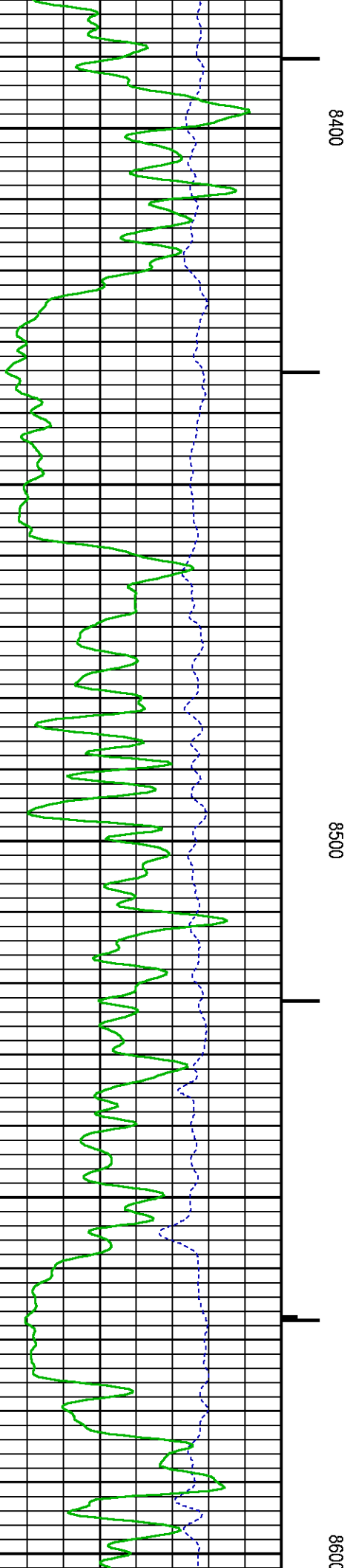
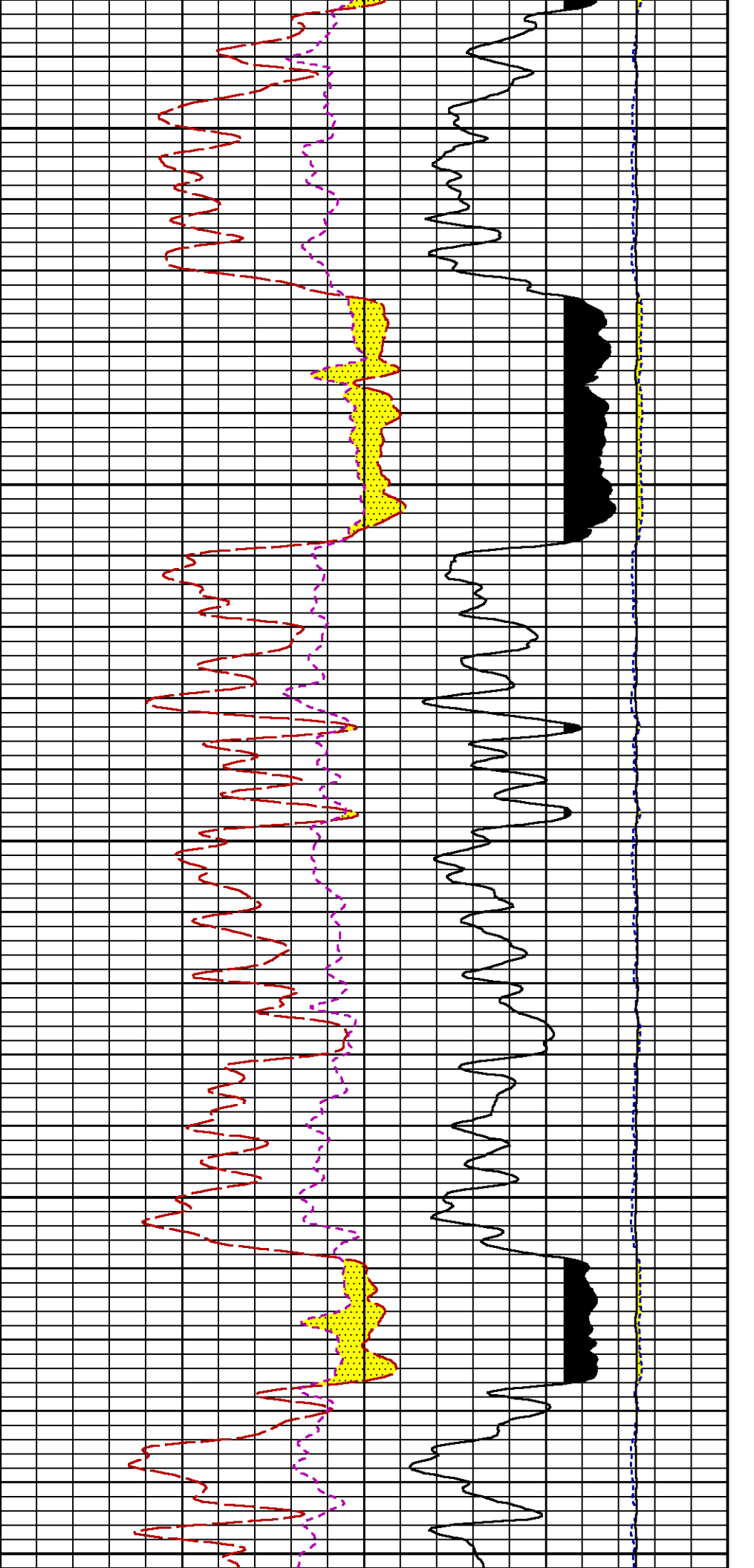
7800

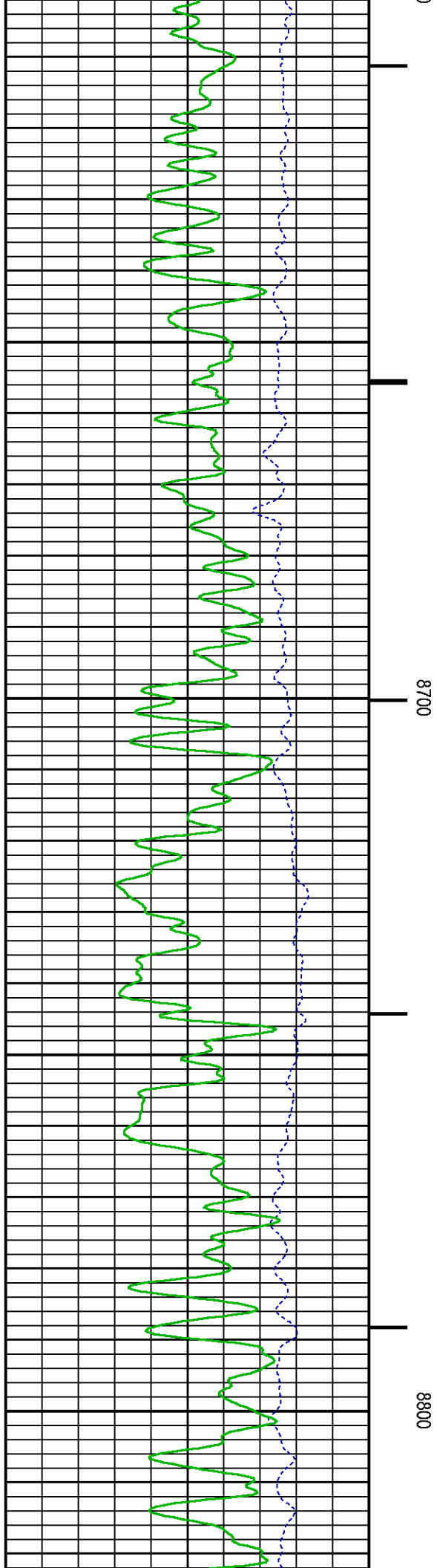
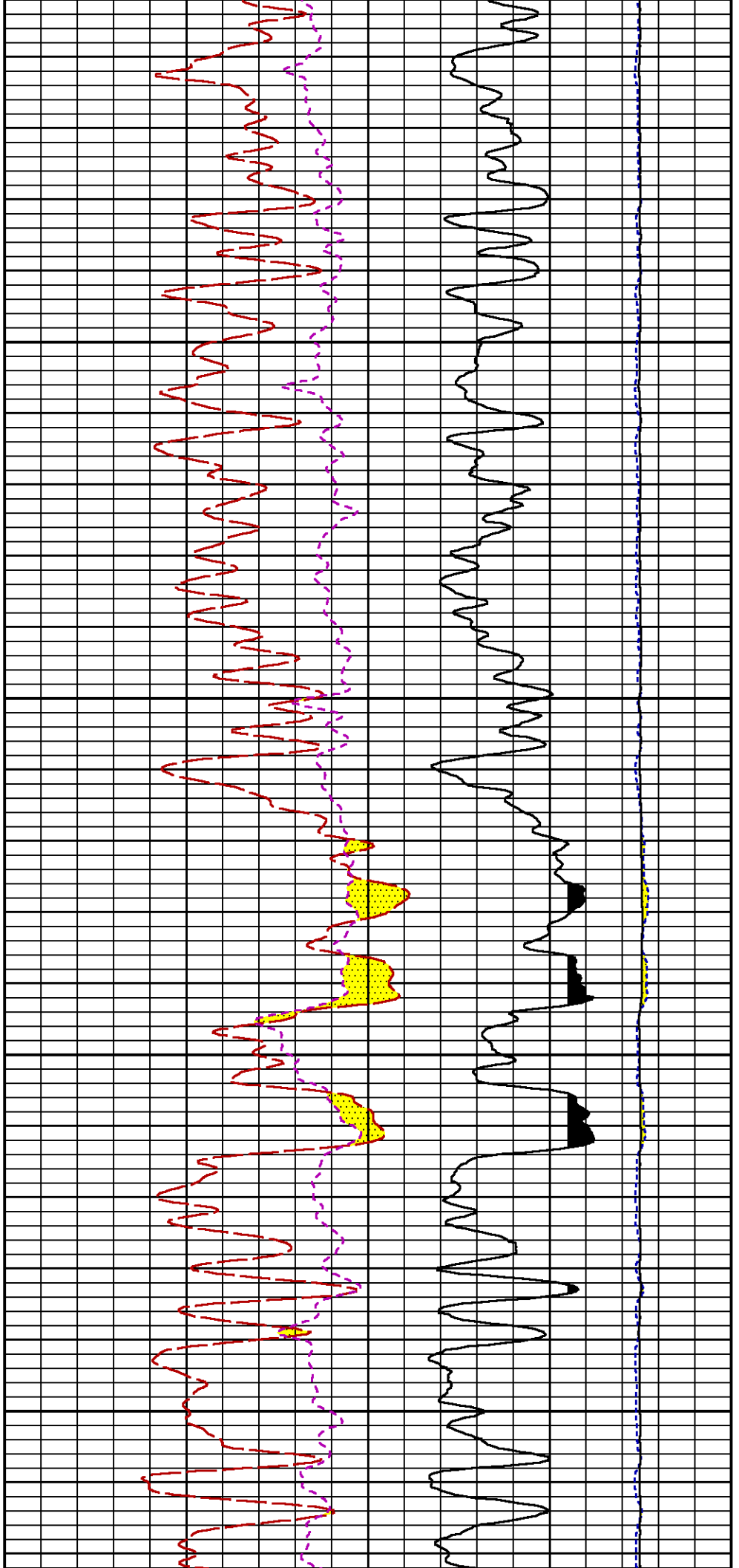
7900

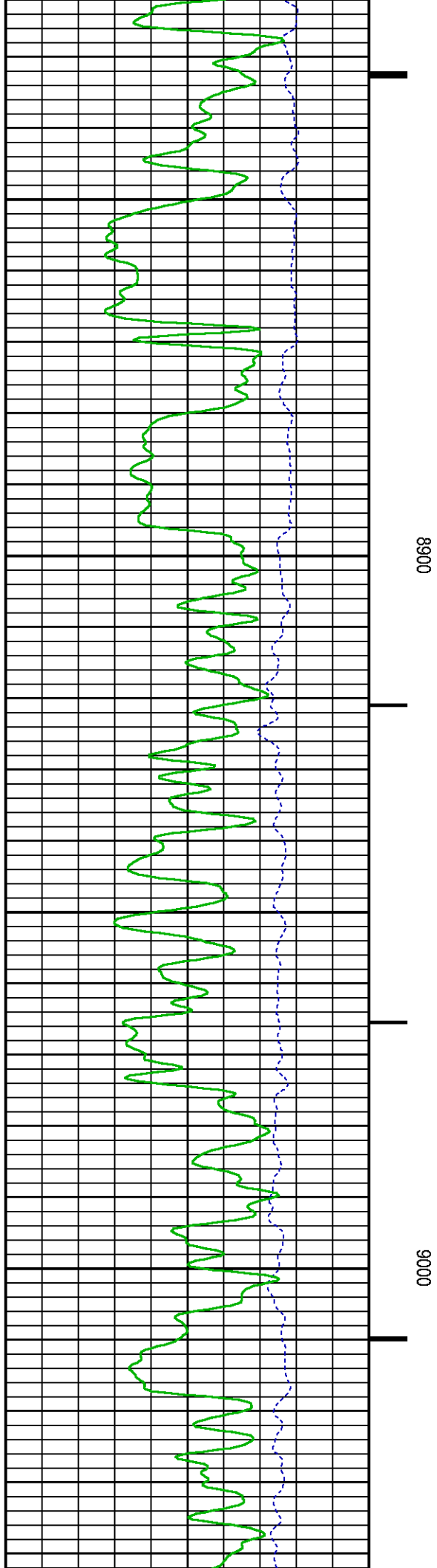
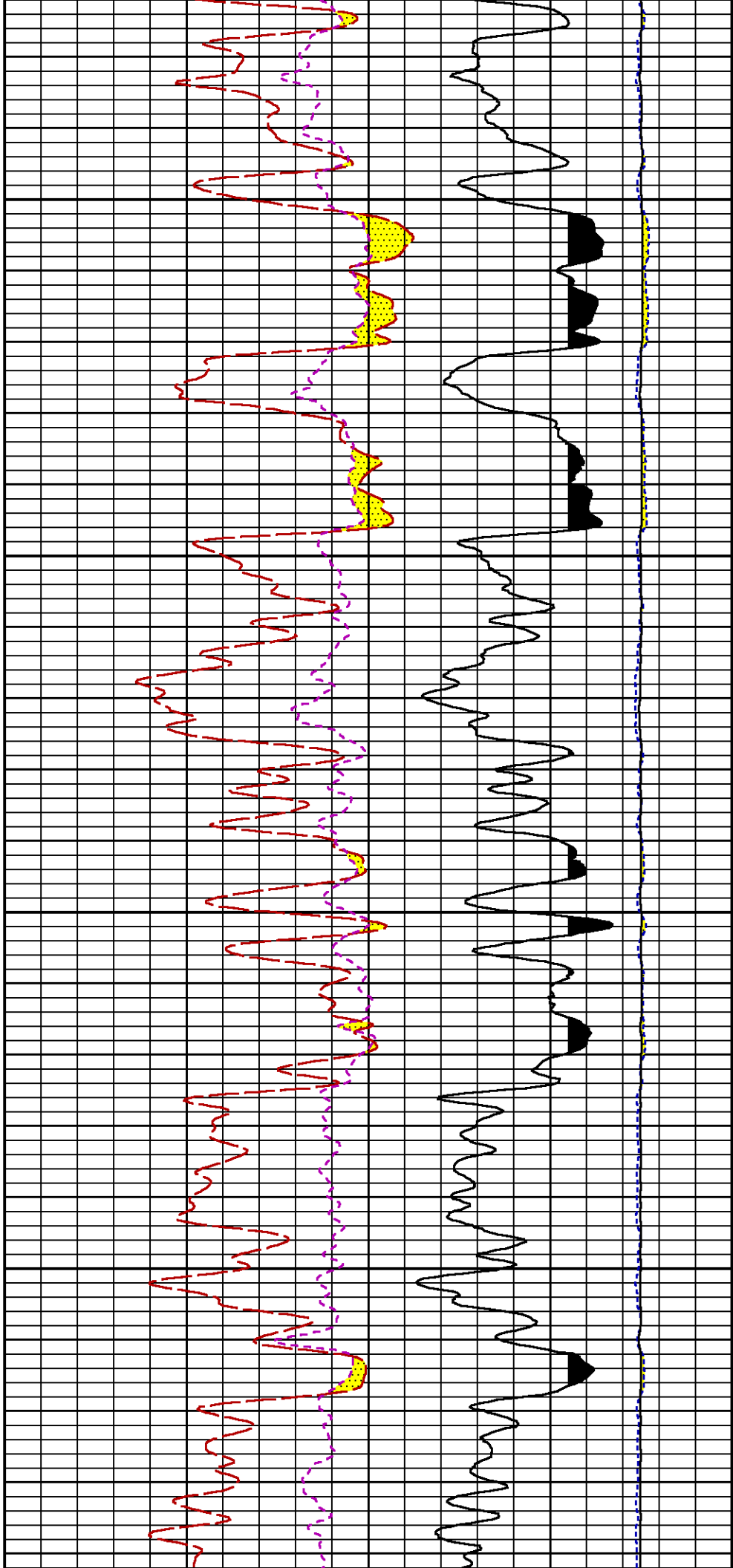


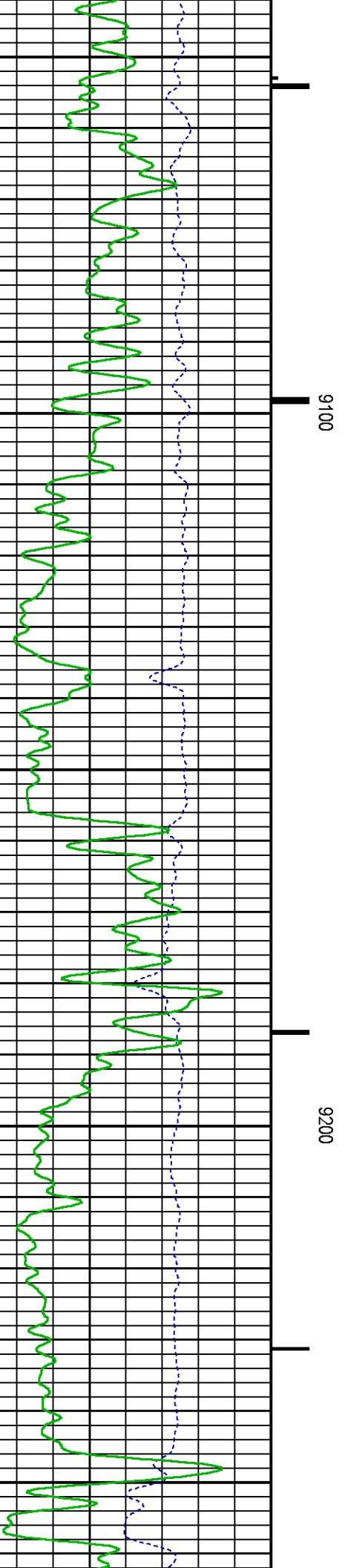
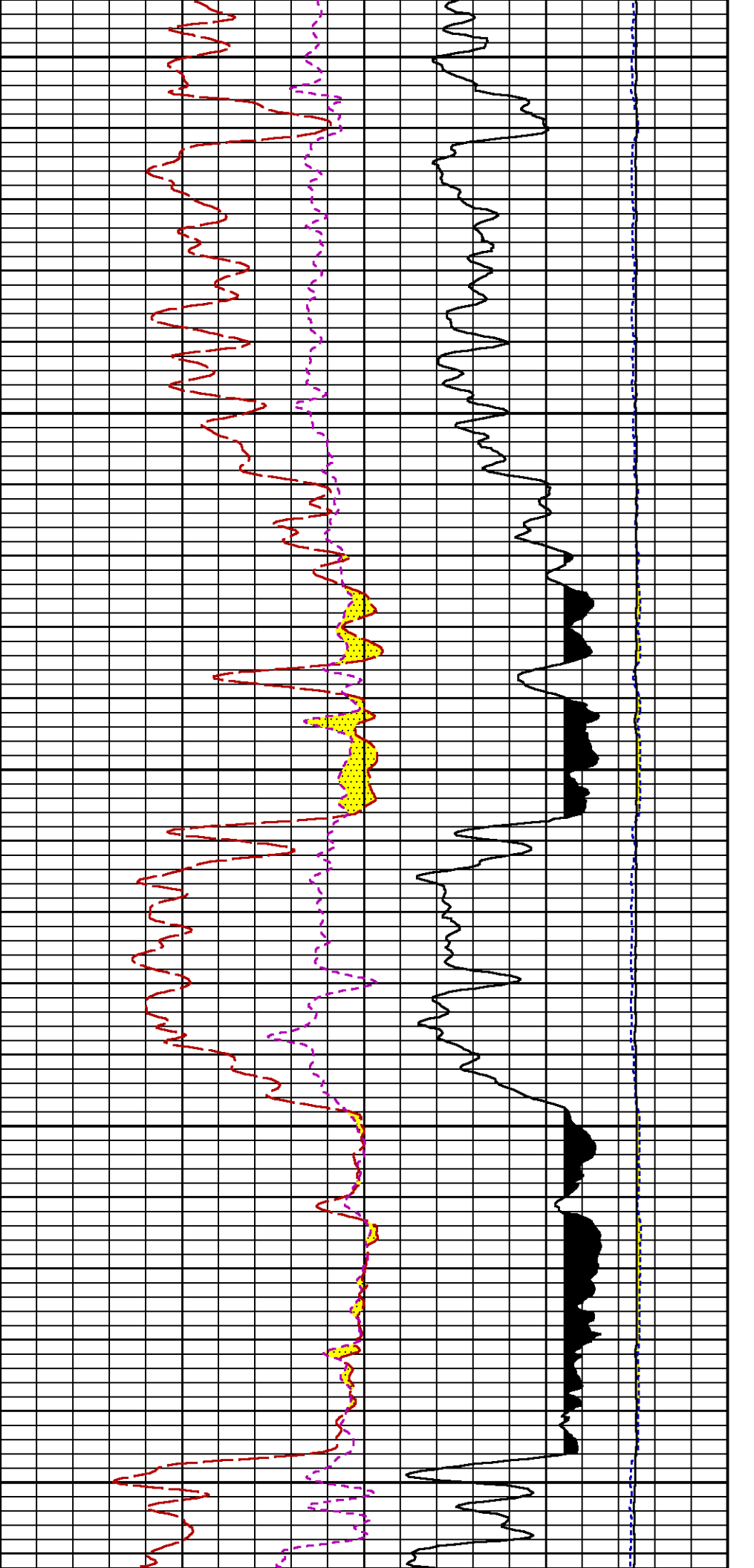


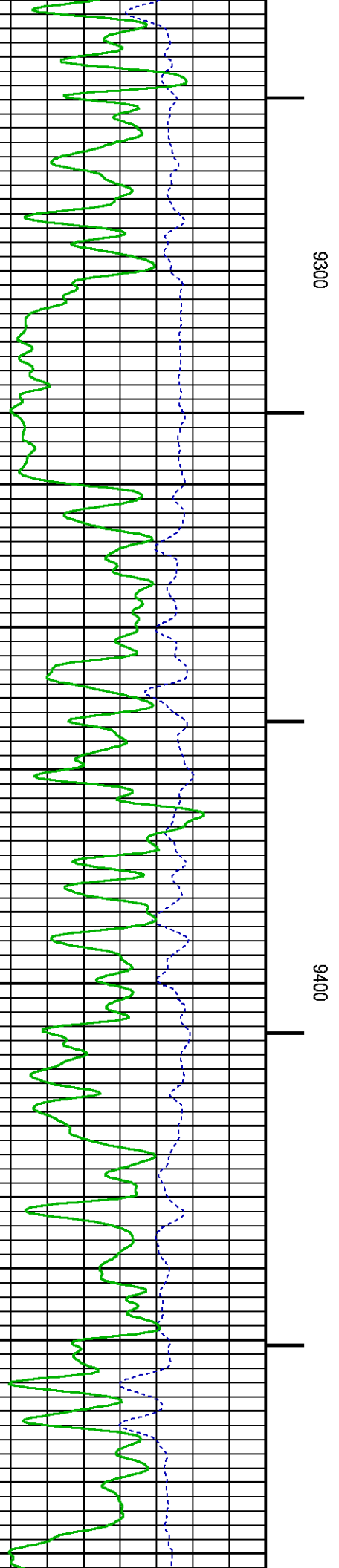
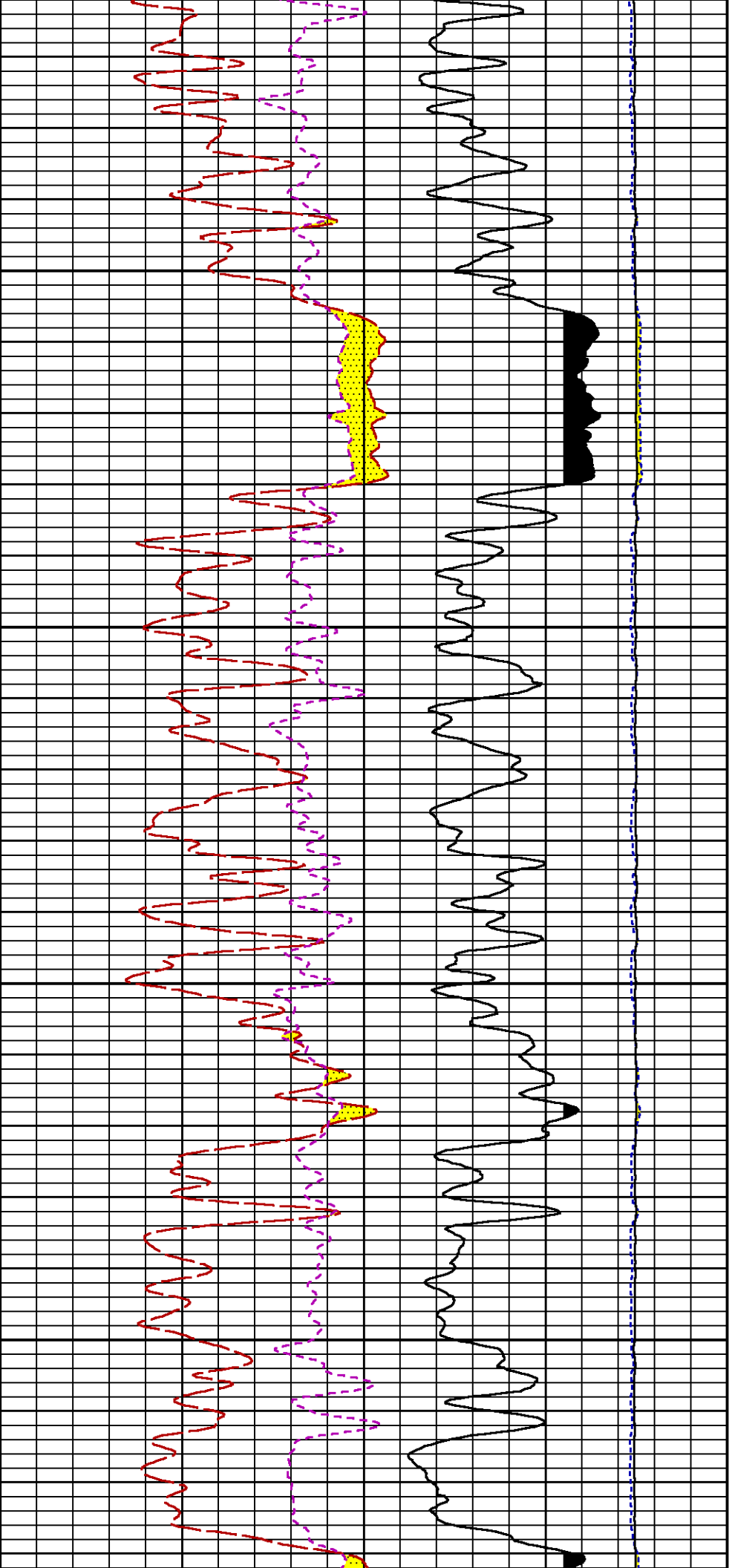


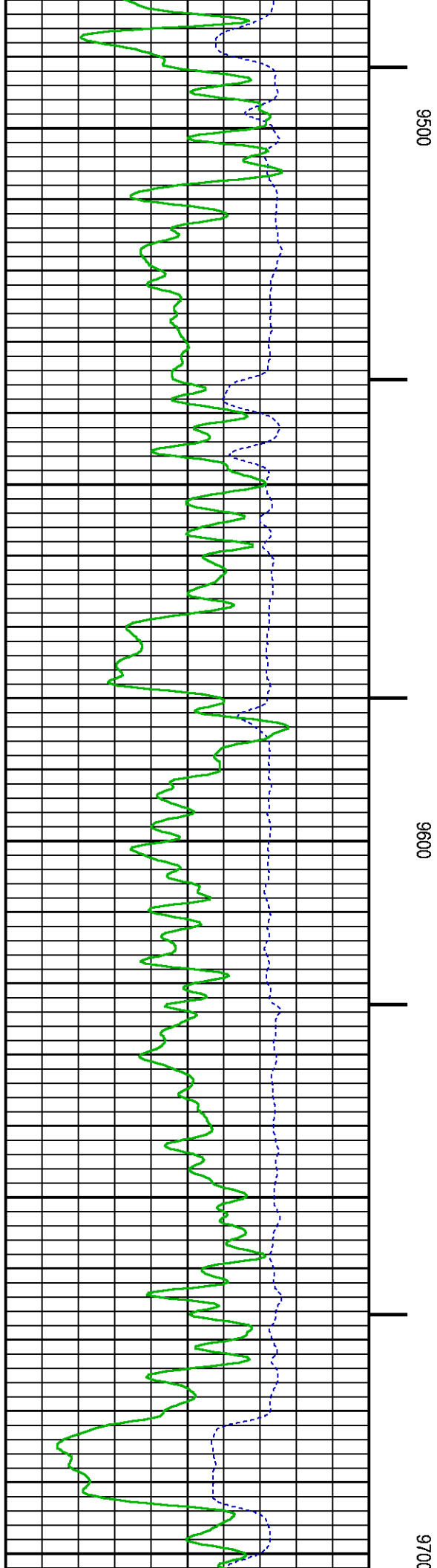
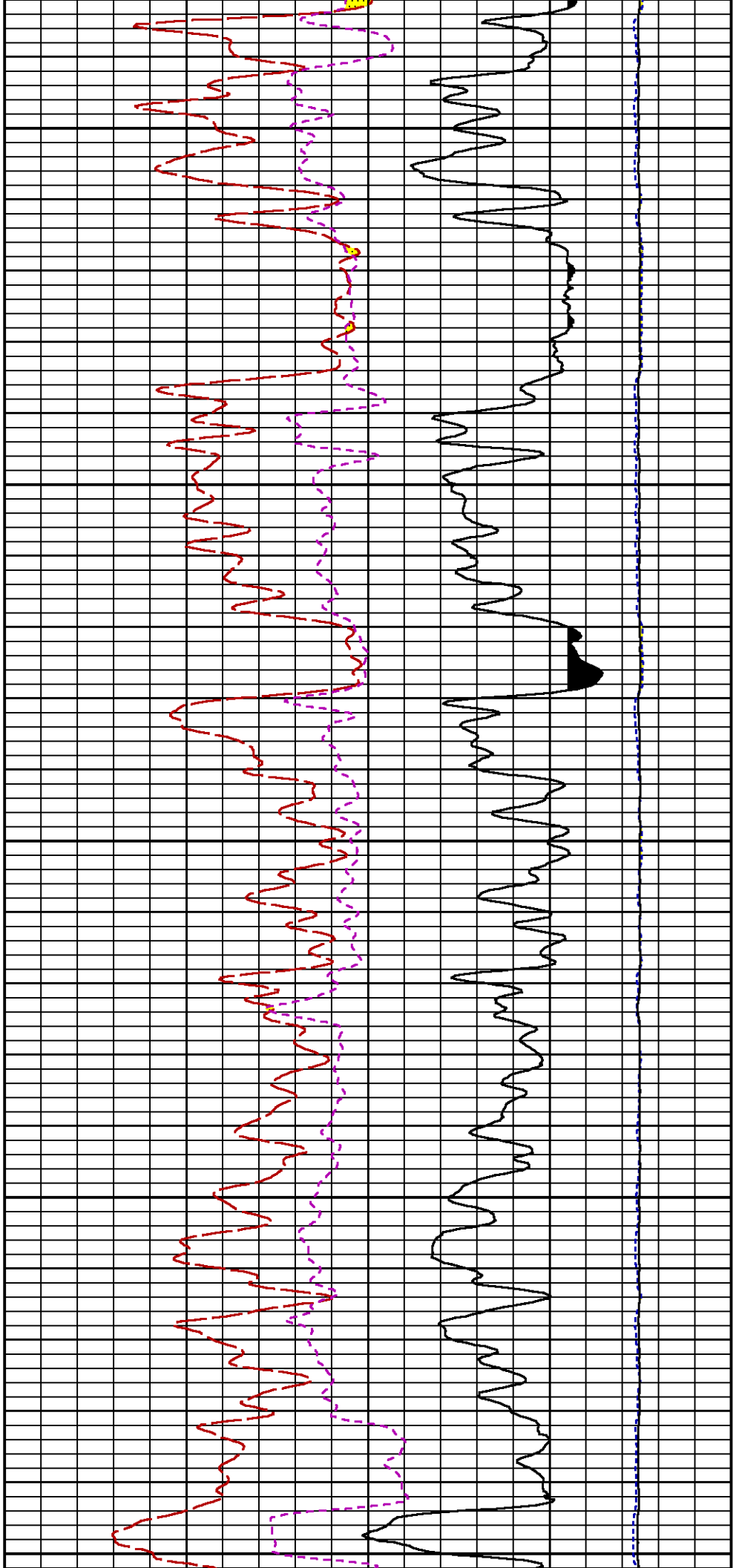


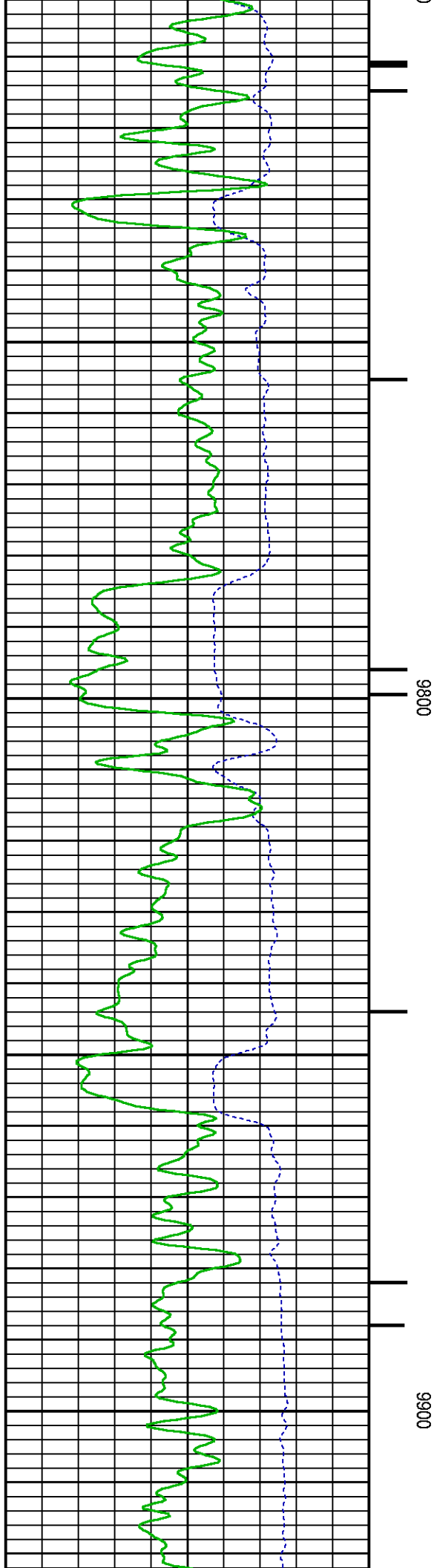
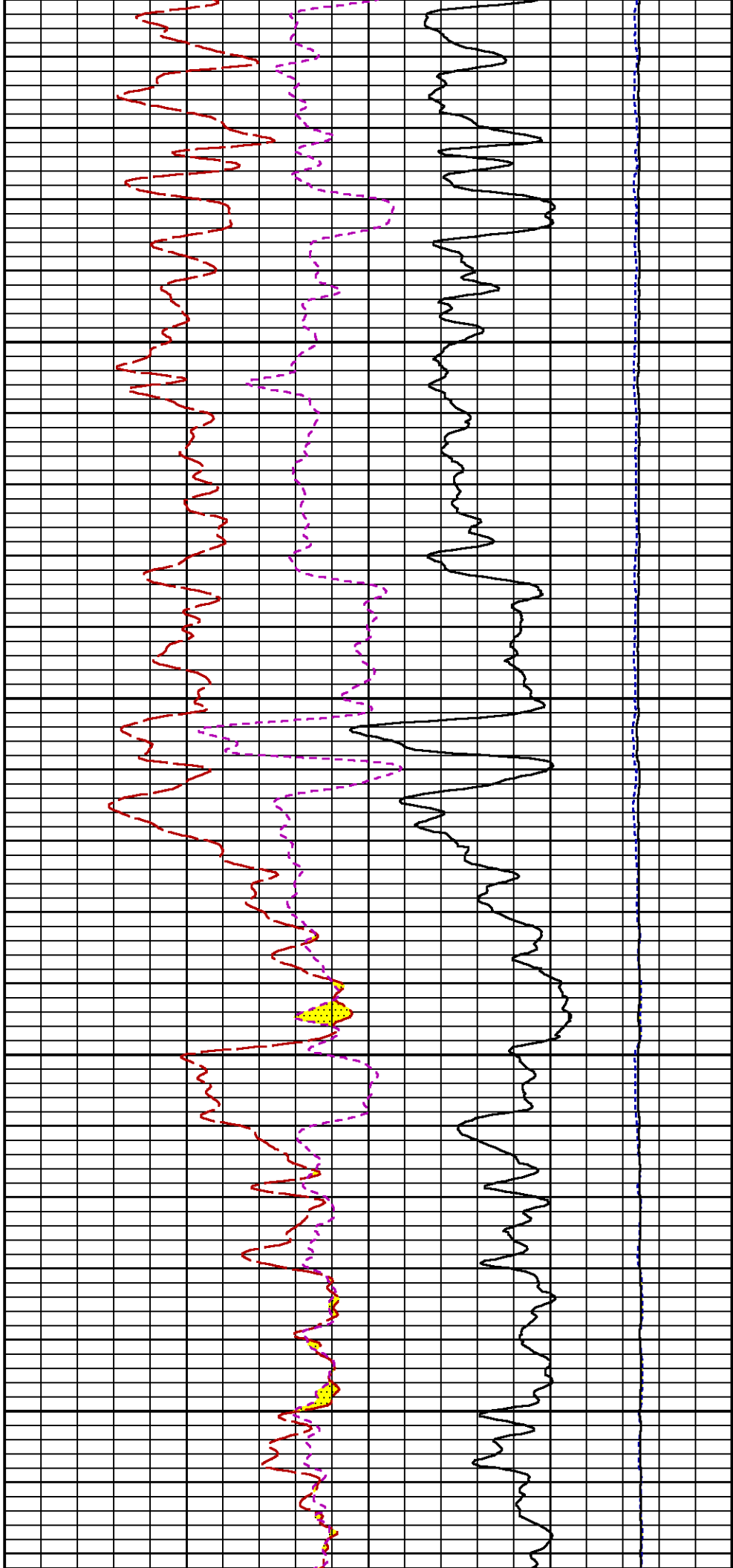


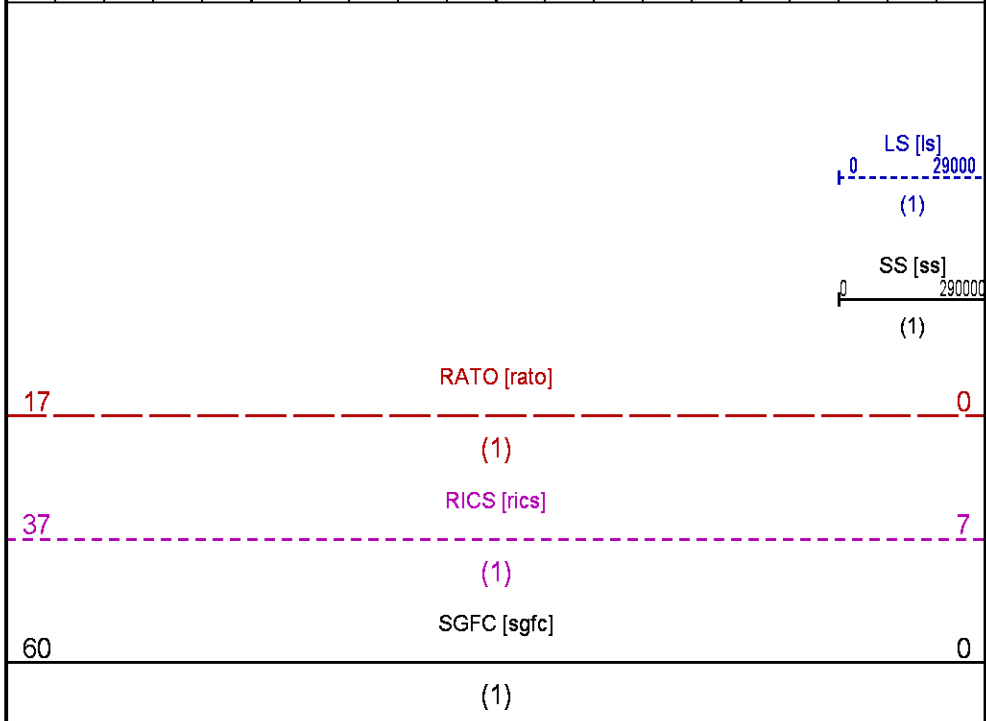
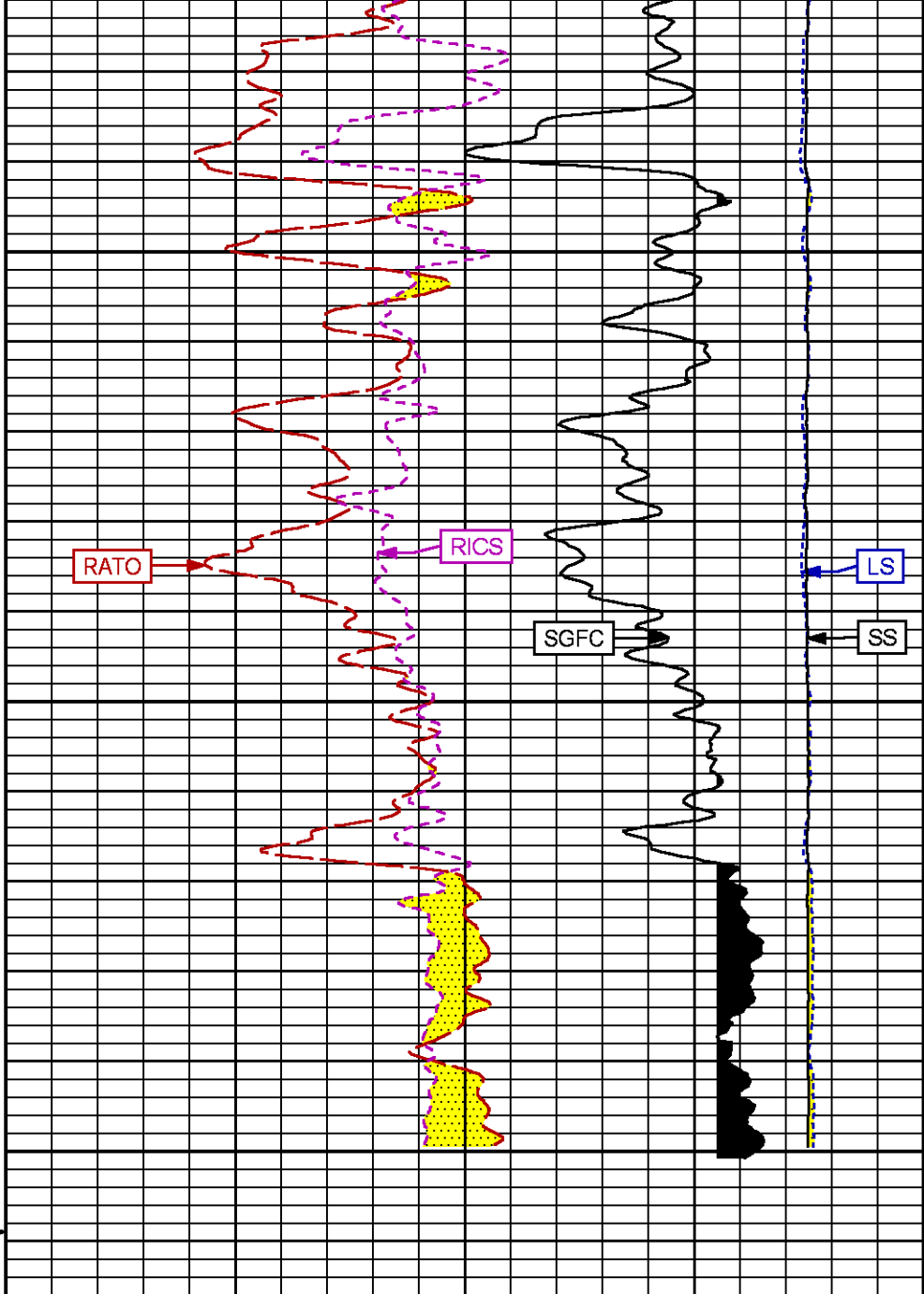
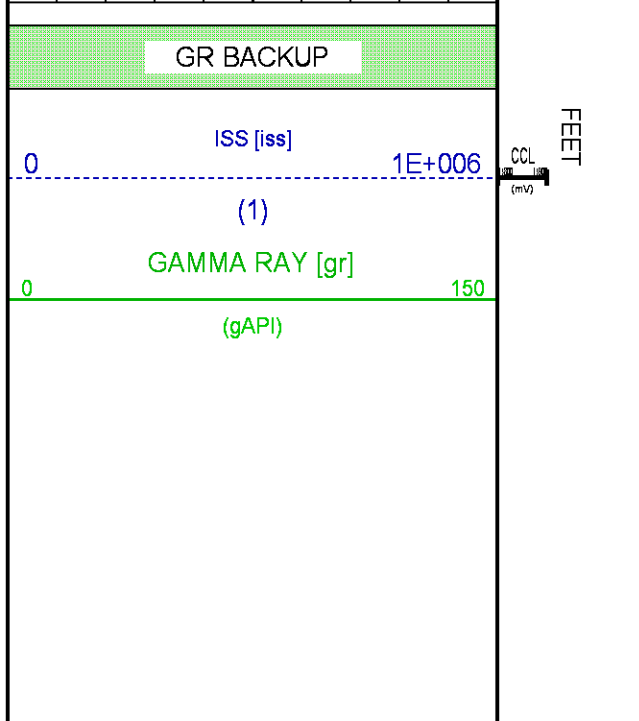
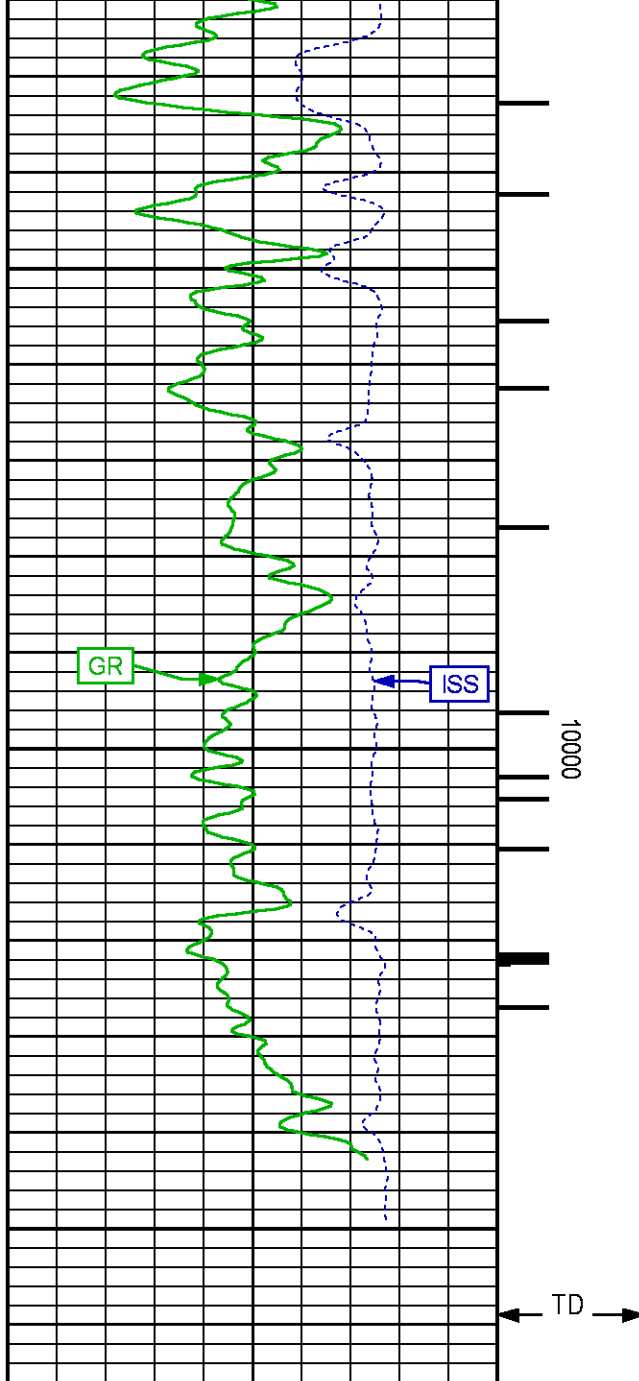












REPEAT SECTION PNC-3D MODE

ECLIPS 6.2wu1 PC-ECLIPS General Release Rel 6.2w Update 1 Fri Apr 25 10:54:53 Central Daylight Time 2014
 Updates: 46 Patches: 5

Plotted: Mon Mar 09 13:13:16 2015

PARAMETER AND FILTER SUMMARY REPORT

FILE: C:\dat1a\095181\354h01.prm
 LOGGING MODE: DEPTH DIRECTION: UP
 TOP DEPTH: 9191.000 ft BOTTOM DEPTH: 9523.000 ft

SYMMETRIC FILTER

MEASUREMENT TYPE	PARAMETER	VALUE	UNITS	INTERVAL (ft)
GR	FILTER ()	medium (1)		TOP BOTTOM

RPM PROCESSING

MEASUREMENT TYPE	PARAMETER	VALUE	UNITS	INTERVAL (ft)
PNC Parameters	BOREHOLE CONTENTS	FLUID		TOP BOTTOM
	OPEN/CASED HOLE	CASED HOLE		" "
	BOREHOLE SIZE	8.50	in	" "
	CASING SIZE	4.50	in	" "
	MATRIX	SANDSTONE		" "
	CORRECTION BUFFER	11		" "

CURVE DESCRIPTION REPORT

CURVE NAME	CREATION DATE	CURVE DESCRIPTION
F1:CCL	Mar 8 09:27:46 2015	CASING COLLAR LOCATOR
F1:GR	Mar 8 09:27:46 2015	GAMMA RAY
F1:ISS	Mar 8 09:27:46 2015	INELASTIC SHORT SPACE COUNT RATE
F1:LS	Mar 8 09:27:46 2015	LONG SPACE COUNT RATE
F1:RATO	Mar 8 09:27:46 2015	SHORT/LONG SPACE COUNT RATE RATIO
F1:RICS	Mar 8 09:27:46 2015	SHORT SPACE INELASTIC TO CAPTURE COUNT RATE RATIO (ISS/CSS)
F1:SGFC	Mar 8 09:27:46 2015	CORRECTED FORMATION SIGMA
F1:SS	Mar 8 09:27:46 2015	SHORT SPACE COUNT RATE

CURVE MEASURE POINT OFFSET

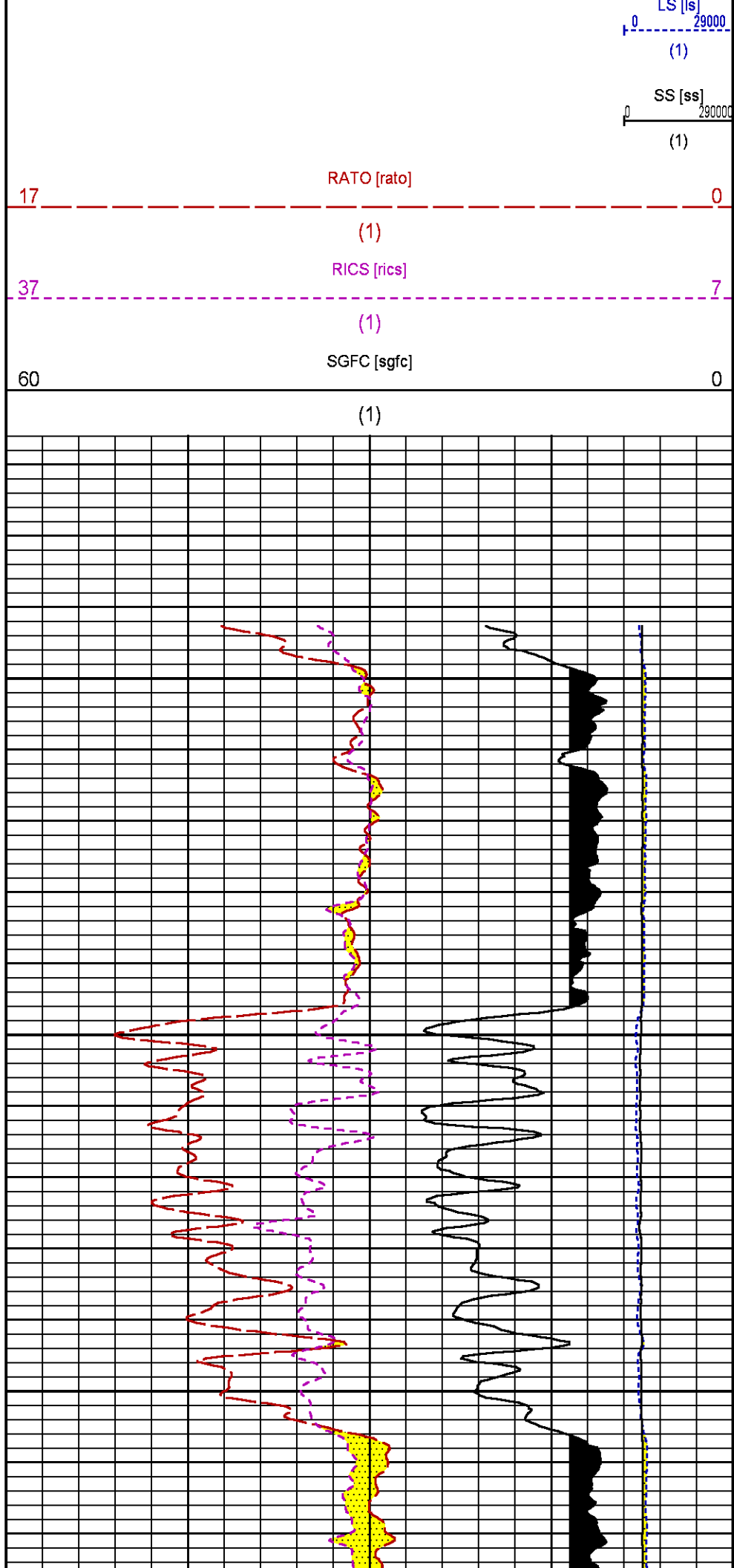
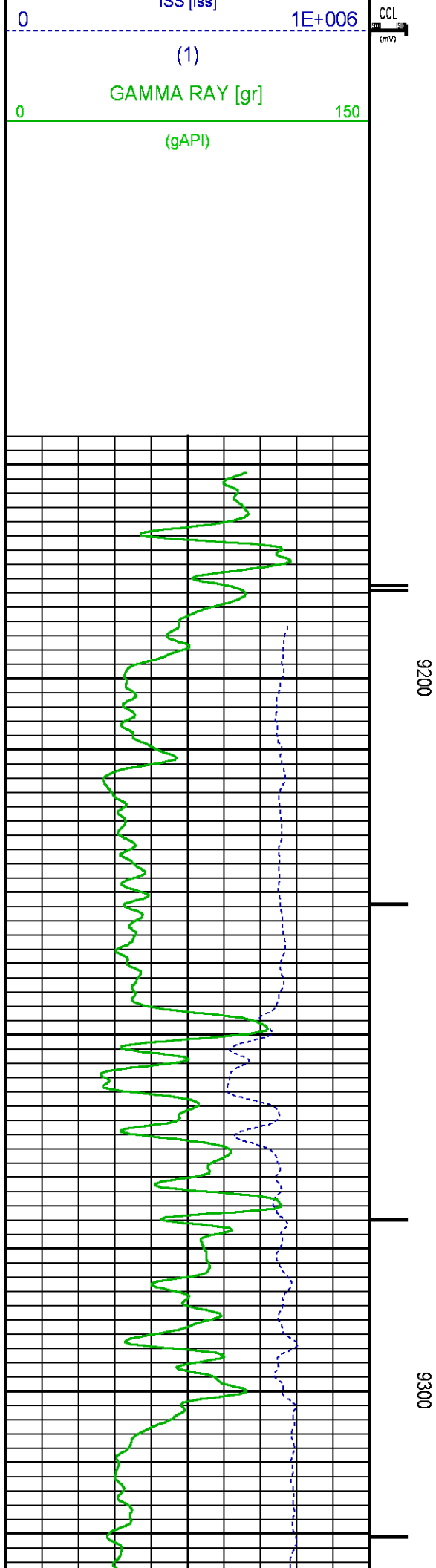
CURVE	OFFSET (ft)	CURVE	OFFSET (ft)	CURVE	OFFSET (ft)	CURVE	OFFSET (ft)
CCL	25.00	ISS	12.75	RATO	12.75	SGFC	12.75
GR	22.75	LS	12.75	RICS	12.75	SS	12.75

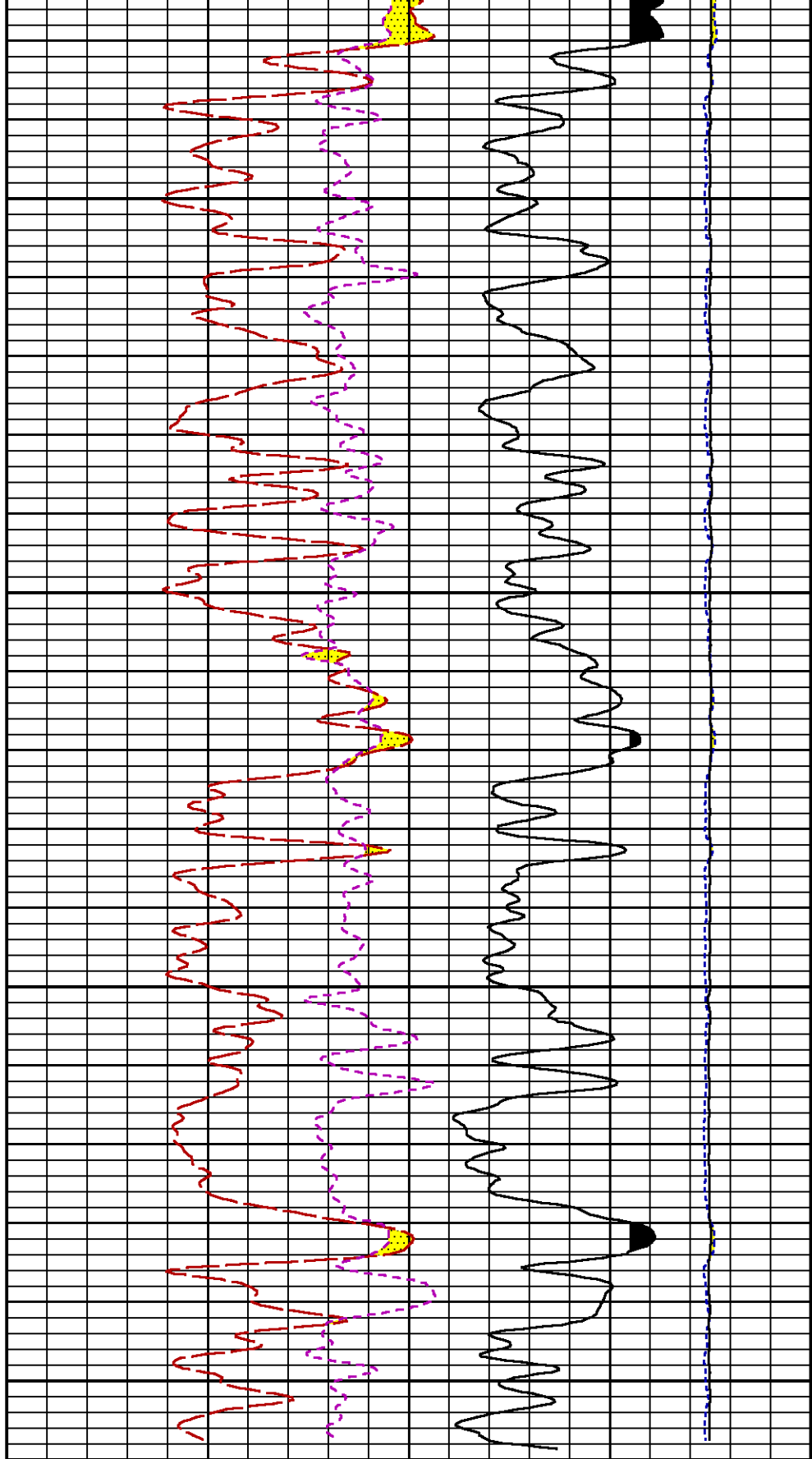
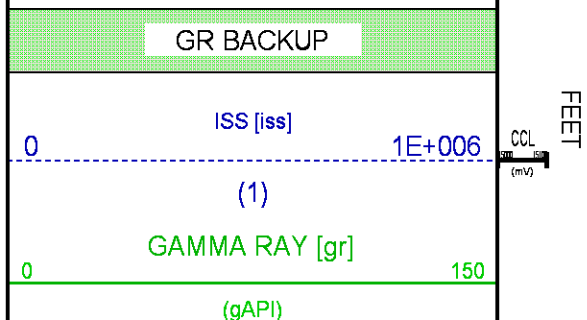
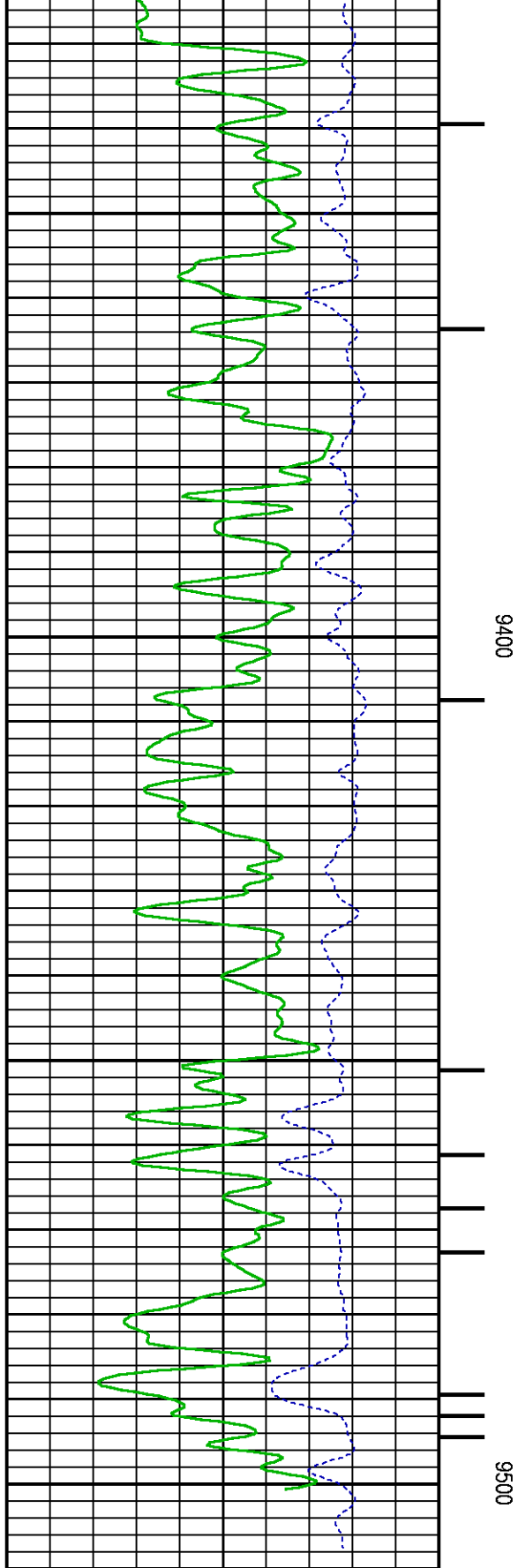
Presentation : BHUGHES-06627:C:\dat1a\095181\532_RPM_REPEAT.fvpdf [5"/100' Scale]
Plot Interval : 9167.75 - 9508.75 Feet

Data File 1 : F1 : BHUGHES-06627:C:\dat1a\095181\532_RPM_REPEAT.xtf
Created On : Mar 8 09:27:46 2015
Company : WPX ENERGY
Well : YOUBERG RU 532-7
Field : RULISON
File Interval : 9167 - 9523.5 Feet
OCT : n354h

GR BACKUP

FEET





		RATO [rato]	0
17		(1)	
		RICS [rics]	7
		(1)	
		SGFC [sgfc]	0
60		(1)	

CALIBRATION / VERIFICATION SUMMARY

Source File: C:\dat1a\095181\354h.tp1

GR PRIMARY CALIBRATION SUMMARY

TOOL #: 2812LA 10274382 DATE/TIME PERFORMED: Wed Mar 04 12:56:32 2015

UNIT #: 3885TD Z004271 CALB JIG #: 4702NK WA612

	BACKGROUND CALBRTR ON	CR DIFF	MULT	BACKGROUND CALBRTR ON	CALBRTR
	(cts/s)	(cts/s)		(gAPI)	(gAPI)
GR	60.18	286.47	0.928	55.85	265.85
					210

GR PRIMARY VERIFICATION SUMMARY

TOOL #: 2812LA 10274382 DATE/TIME PERFORMED: Wed Mar 04 13:01:58 2015

UNIT #: 3885TD Z004271 VERI JIG #: 4702NK WA612

	BACKGROUND CALBRTR ON	MULT	BACKGROUND CALBRTR ON	DIFF.
	(cts/s)		(gAPI)	(gAPI)
GR	61.24	0.928	56.84	206.00
				200.00
				220.00

RPM_PNC_3D PRIMARY CALIBRATION SUMMARY

TOOL: 8283PA 10213151 DATE/TIME PERFORMED: Wed Mar 04 11:53:36 2015

UNIT: 3885TD Z004271 CALIBRATOR: 2437XB GJ SOURCE: 8281AA 11803641 HOURS: 8281AA 268

		(V)				(degF)	(usec)	
Raw Data	808780	124	2258	2367	2449	105	7	0.9681
Interpolated	1300000	148	2240	2363	2430			
	ISS	BKS	BKL	BKX	SGA1	SDA1	SGA2	SDA2
Raw Data	808780	6352	1008	144	26.09	0.15	24.26	0.32
					25.35 26.40	0.00 0.20	23.60 24.80	0.00 0.40
	ISS	ILS	IXS	SS	SS2	LS	CSS	CLS
Raw Data	808780	168868	26825	89644	31904	8223	54257	13166
Fit Quality %		1.028	0.912	1.044	1.050	1.054	0.946	1.085
	ISS	RBOR	RIN	RIN13	RICS	RATO	RTWO	RONE
			ISS/LS	ISS/IXS	ISS/CSS	SS/LS	SS2/LS	CSS/CLS
Raw Data	808780	1.43	4.79	30.16	14.91	10.91	3.88	4.12
		1.42 1.45	3.55 5.52	22.20 32.70	10.99 16.34	10.06 11.10	3.57 3.95	3.76 4.22
Fit Quality %		0.078	0.134	0.201	0.133	0.038	0.042	0.060
Reduced	1415035	1.43	4.80	30.21	14.94	10.91	3.88	4.12
		1.42 1.45	4.33 5.52	27.60 32.70	13.70 16.34	10.06 11.10	3.57 3.95	3.76 4.22

INSTRUMENT CONFIGURATION

Source File: C:\dat1a\095181\RPM-tdg.meta

A3 CABLEHEAD
Diameter : 1.37"

PCM POWER SUPPLY
Diameter : 1.70"
Length : 3.86'
Weight : 18 lbs
Series : 8250EA
Mnemonic : PCM

TELEMETRY / CCL
Diameter : 1.70"
Length : 4.46'
Weight : 20 lbs
Series : 8248ED
Mnemonic : PCM
Measure Point: 1.00': CCL MP

33.24'

SONDEX GAMMA RAY

Diameter : 1.69"
Length : 2.17'
Weight : 11 lbs
Series : 2812LA
Mnemonic : GR
Measure Point: 0.63': GR MP

CCL MP 25.19'

GR MP 22.64'

RPM ELECTRONICS

Diameter : 1.70"
Length : 4.48'
Weight : 16 lbs
Series : 8281EA
Mnemonic : RPM

RPM C DETECTOR SECTION

Diameter : 1.70"
Length : 9.40'
Weight : 41 lbs
Series : 8283PA
Mnemonic : RPM
Measure Point: 5.45': XLS DETECTOR
Measure Point: 5.04': LS DETECTOR
Measure Point: 4.79': SS DETECTOR

XLS DETECTOR 13.58'

LS DETECTOR 13.16'

SS DETECTOR 12.91'

RPM SOURCE SECTION

Diameter : 1.70"
Length : 4.70'
Weight : 18 lbs
Series : 8281FA
Mnemonic : RPM

TEMPERATURE / PRESSURE

Diameter : 1.70"
Length : 3.30'
Weight : 13 lbs
Series : 8255XA
Mnemonic : SRPL
Measure Point: 1.52': TEMP MP


TEMP MP 1.65'

PRES MP

BULL PLUG 1 11/16

0.00'

TOTAL LENGTH: 33.24'
TOTAL WEIGHT: 140 lbs
MAX DIAMETER: 0'1.70"

	COMPANY	WPX ENERGY		FILE NO:	
	WELL	YOUBERG RU 532-7			CH095181
	FIELD	RULISON		API NO:	
	COUNTY	GARFIELD	STATE	COLORADO	05045225100000
LOCATION:		ELEVATIONS:		7 7S 93W	
SHL: 1173' FSL & 1191' FEL		KB 7943 FT		RU 44-7 PAD	
BHL: 2306' FNL & 1989' FEL (SWNE)		DF		NABORS 576	
GL 7917 FT		DATE		08-Mar-2015	
SEC 7 TWP 7S RGE 93W					