

WPX Energy Rocky Mountain LLC- EBUS

RU 431-7

Nabors 574

Post Job Summary

Cement Surface Casing

Date Prepared: 12/29/14
Job Date: 11/19/2014

Submitted by: Evan Russell – Grand Junction Cement Engineer

The Road to Excellence Starts with Safety

| | | | |
|--|-----------------------------------|----------------------------|---------------------------|
| Sold To #: 300721 | Ship To #: 3356179 | Quote #: | Sales Order #: 0901953549 |
| Customer: WPX ENERGY ROCKY MOUNTAIN LLC-EBUS | Customer Rep: GARY VALLAD | | |
| Well Name: YOUNBERG | Well #: RU 431-7 | API/UWI #: 05-045-22346-00 | |
| Field: RULISON | City (SAP): RIFLE | County/Parish: GARFIELD | State: COLORADO |
| Legal Description: SE NE-7-7S-93W-2452FNL-379FEL | | | |
| Contractor: NABORS DRLG | Rig/Platform Name/Num: NABORS 574 | | |
| Job BOM: 7521 | | | |
| Well Type: DIRECTIONAL GAS | | | |
| Sales Person: HALAMERICA\HB50180 | Srvc Supervisor: Craig Kukus | | |

Job

| | |
|------------------------|-------------------|
| Formation Name | |
| Formation Depth (MD) | Top |
| Form Type | BHST |
| Job depth MD | 1178ft |
| Water Depth | Wk Ht Above Floor |
| Perforation Depth (MD) | From |
| | To |

Well Data

| Description | New / Used | Size in | ID in | Weight lbm/ft | Thread | Grade | Top MD ft | Bottom MD ft | Top TVD ft | Bottom TVD ft |
|-------------------|------------|---------|-------|---------------|--------|-------|-----------|--------------|------------|---------------|
| Casing | | 9.625 | 9.001 | 32.3 | | | 0 | 1178 | | 0 |
| Open Hole Section | | | 13.5 | | | | 0 | 1180 | | 0 |

Tools and Accessories

| Type | Size in | Qty | Make | Depth ft | Type | Size in | Qty | Make |
|--------------|---------|-----|------|----------|----------------|---------|-----|------|
| Guide Shoe | 9.625 | 1 | | 1178 | Top Plug | 9.625 | 1 | HES |
| Float Shoe | 9.625 | | | | Bottom Plug | 9.625 | | HES |
| Float Collar | 9.625 | 1 | | 1131 | SSR plug set | 9.625 | | HES |
| Insert Float | 9.625 | | | | Plug Container | 9.625 | 1 | HES |
| Stage Tool | 9.625 | | | | Centralizers | 9.625 | | HES |

Miscellaneous Materials

| | | | | | | |
|---------------|------|------------|------|-----------|------|------|
| Gelling Agt | Conc | Surfactant | Conc | Acid Type | Qty | Conc |
| Treatment Fld | Conc | Inhibitor | Conc | Sand Type | Size | Qty |

Fluid Data

| Stage/Plug #: 1 | | | | | | | | | | |
|-----------------|-------------|---------------------|-----|---------|------------------------|----------------|---------------|--------------|---------------------|--|
| Fluid # | Stage Type | Fluid Name | Qty | Qty UoM | Mixing Density lbm/gal | Yield ft3/sack | Mix Fluid Gal | Rate bbl/min | Total Mix Fluid Gal | |
| 1 | Fresh Water | Fresh Water | 20 | bbl | 8.34 | | | 4 | | |
| | | | | | | | | | | |
| Fluid # | Stage Type | Fluid Name | Qty | Qty UoM | Mixing Density lbm/gal | Yield ft3/sack | Mix Fluid Gal | Rate bbl/min | Total Mix Fluid Gal | |
| 2 | VariCem GJ1 | VARICEM (TM) CEMENT | 135 | sack | 12.3 | 2.38 | | 8 | 13.77 | |

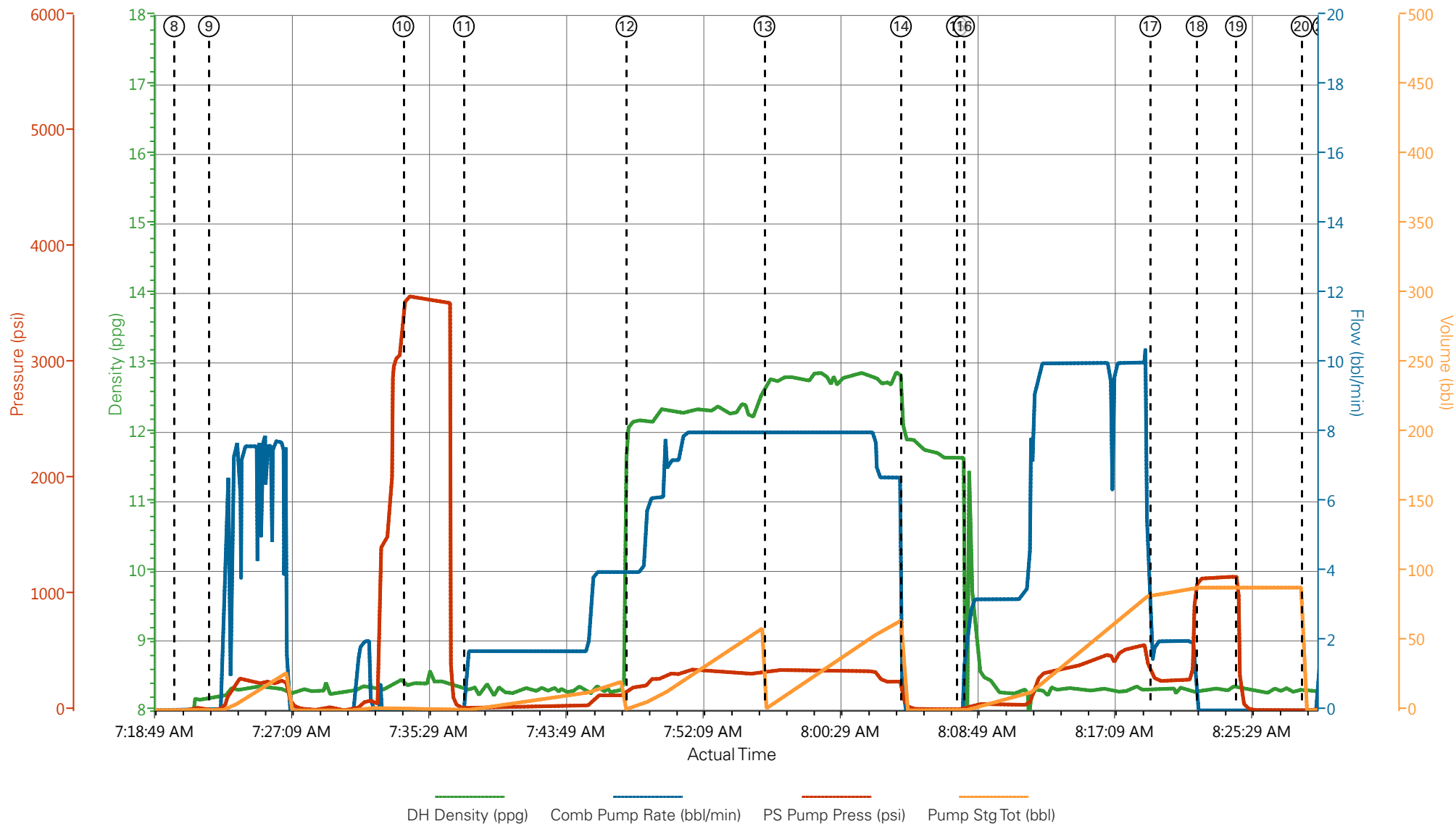
| 13.70 Gal | | FRESH WATER | | | | | | | | |
|-------------------------------------|--------------------------|---|-----------------------------------|---------|--------------------------------------|--|------------------|-----------------|---------------------------|--|
| | | | | | | | | | | |
| Fluid # | Stage Type | Fluid Name | Qty | Qty UoM | Mixing Density lbm/gal | Yield ft ³ /sack | Mix Fluid Gal | Rate bbl/min | Total Mix Fluid Gal | |
| 3 | VariCem GJ1 | VARICEM (TM) CEMENT | 175 | sack | 12.8 | 2.11 | | 8 | 11.77 | |
| 11.71 Gal | | FRESH WATER | | | | | | | | |
| | | | | | | | | | | |
| Fluid # | Stage Type | Fluid Name | Qty | Qty UoM | Mixing Density lbm/gal | Yield ft ³ /sack | Mix Fluid Gal | Rate bbl/min | Total Mix Fluid Gal | |
| 4 | Fresh Water Displacement | Fresh Water Displacement | 89 | bbl | 8.34 | | | 10 / 2 | | |
| | | | | | | | | | | |
| Cement Left In Pipe | | Amount | 47 ft | | Reason | | | Shoe Joint | | |
| Mix Water: | | pH ## | Mix Water Chloride: ## ppm | | | Mix Water Temperature: 44 °F °C | | | | |
| Cement Temperature: ## °F °C | | Plug Displaced by: 8.33 lb/gal kg/m3 XXXX | | | Disp. Temperature: ## °F °C | | | | | |
| Plug Bumped? Yes | | Bump Pressure: 1140 psi MPa | | | Floats Held? Yes | | | | | |
| Cement Returns: 19 bbl m3 | | Returns Density: ## lb/gal kg/m3 | | | Returns Temperature: ## °F °C | | | | | |
| Comment | | | | | | | | | | |

3.1 Job Event Log

| Type | Seq. No. | Activity | Date | Time | Source | DH Density (ppg) | Comb Pump Rate (bbl/min) | PS Pump Press (psi) | Pump Stg Tot (bbl) | Comment |
|-------|----------|--|------------|----------|--------|---------------------|-----------------------------|------------------------|-----------------------|---|
| Event | 1 | Call Out | 12/19/2014 | 09:00:00 | USER | | | | | CREW CALL OUT |
| Event | 2 | Depart from Service Center or Other Site | 12/19/2014 | 12:00:00 | USER | | | | | SAFETY MEETING DEPARTING SERVICE CENTER ALL HES CREW PRESENT |
| Event | 3 | Arrive At Loc | 12/19/2014 | 15:00:00 | USER | | | | | ARRIVE ON LOC RIG SETTING UP TO RUN CSG / HES EQUIP ON LOC : 1 EA CEMENT PUMP UNIT 1 EA 660 BULK UNIT 1 EA SERVICE PICK UNIT / SHORTLY AFTER STARTING CSG RIG POOH WITH CSG WENT BACK IN WITH DP / 01:30 12-20-14 RIG RUN IN WITH CSG |
| Event | 4 | Assessment Of Location Safety Meeting | 12/19/2014 | 15:20:00 | USER | | | | | ASSESMENT WALK THRU ALL HES PRESENT |
| Event | 5 | Pre-Rig Up Safety Meeting | 12/20/2014 | 05:30:00 | USER | | | | | PRE-RIG UP SAFETY MEETING ALL HES PRESENT |
| Event | 6 | Rig-Up Equipment | 12/20/2014 | 05:35:00 | USER | | | | | RIG UP IRON TO STAND PIPE AND SUCTION HOSES TO UP RIGHT |
| Event | 7 | Pre-Job Safety Meeting | 12/20/2014 | 06:05:50 | USER | 0.89 | 0.00 | 61.00 | 0.0 | ALL RIG PERSONEL AND HES PRESENT |
| Event | 8 | Start Job | 12/20/2014 | 07:20:11 | COM6 | -0.20 | 0.00 | -1.00 | 0.0 | START JOB: TP 1178 FT SJT 47 FT OH 13.5 IN WF/WT 9.9# CSG 9 5/8 IN 32.3# H-40 |
| Event | 9 | Prime Pumps | 12/20/2014 | 07:22:18 | COM6 | 8.17 | 0.00 | 2.00 | 2.0 | PRIME LINES WITH FRESH WATER |
| Event | 10 | Test Lines | 12/20/2014 | 07:34:06 | COM6 | 8.36 | 0.00 | 3559.00 | .1 | PRESSURE TEST LINES 5 TH GEAR STALL OUT AT 1490 PSI TEST TO 3500 PSI TEST |

| | | | | | | | | | | |
|-------|----|--------------------------------|------------|----------|------|-------|------|---------|-------|--|
| | | | | | | | | | | GOOD |
| Event | 11 | Pump Spacer 1 | 12/20/2014 | 07:37:47 | COM6 | 8.30 | 1.70 | 23.00 | 20 | PUMP 20 BBLS H2O SPACER |
| Event | 12 | Pump Lead Cement | 12/20/2014 | 07:47:40 | COM6 | 12.12 | 3.90 | 184.00 | 58 | PUMP 135 SKS LEAD CEMENT AT 12.3 PPG 2.38 Y 13.77 GAL/SKS CEMENT DIP GOOD AND RETURNS GOOD |
| Event | 13 | Pump Tail Cement | 12/20/2014 | 07:56:03 | COM6 | 12.85 | 8.00 | 338.00 | 66 | PUMP 175 SKS TAIL CEMENT AT 12.8 PPG 2.11 Y 11.77 GAL/SKS RETURNS GOOD CEMENT DIP GOOD |
| Event | 14 | Shutdown | 12/20/2014 | 08:04:21 | COM6 | 11.91 | 0.00 | 84.00 | 146.1 | SHUT DOWN END CEMENT / READY TUB TO WAS UP ON TOP OF PLUG |
| Event | 15 | Drop Plug | 12/20/2014 | 08:07:45 | COM6 | 11.66 | 0.00 | 9.00 | 0.0 | DROP TOP PLUG / PLUG AWAY |
| Event | 16 | Other | 12/20/2014 | 08:08:11 | COM6 | 9.85 | 1.80 | 22.00 | 79 | PUMP H2O DISPLACEMENT / RETURNS GOOD |
| Event | 17 | Other | 12/20/2014 | 08:19:30 | COM6 | 8.30 | 1.70 | 290.00 | 80 | SLOW RATE TO 2 BBL MIN |
| Event | 18 | Shutdown | 12/20/2014 | 08:22:18 | COM6 | 8.24 | 0.00 | 1131.00 | 89 | PLUG LANDED AT 270 PSI BUMP TO 1140 PSI |
| Event | 19 | Other | 12/20/2014 | 08:24:42 | COM6 | 8.31 | 0.00 | 570.00 | 89 | CHECK FLOATS / GOT BACK .5 BBLS TO TANKS / 19 BBLS CEMENT TO SURFACE |
| Event | 20 | End Job | 12/20/2014 | 08:28:41 | COM6 | 8.27 | 0.00 | 1.00 | 235.1 | END JOB |
| Event | 21 | Pre-Rig Down Safety Meeting | 12/20/2014 | 08:30:00 | USER | 8.30 | 2.80 | 26.00 | 235.1 | PRE RIG DOWN SAFETY MEETING ALL HES CREW PRESENT |
| Event | 22 | Rig-Down Equipment | 12/20/2014 | 08:35:00 | USER | 8.24 | 8.80 | 288.00 | 0 | RIG FLOOR DOWN AND CLEAN UP PUMP AND RIG DOWN |
| Event | 23 | Depart Location Safety Meeting | 12/20/2014 | 09:40:00 | USER | | | | | DEPART LOCATION SAFETY MEETING ALL HES PRESENT |
| Event | 24 | Comment | 12/20/2014 | 10:00:00 | USER | | | | | THANK YOU FOR USING HALLIBURTON CEMENTING SERVICES AND THE CREW OF CRAIG KUKUS |

WPX ENERGY ROCKY MOUNTAIN NABORS 574 CEMENT SURFACE CSG JOB YUBERG RU 431-7



- | | | | | |
|--|--------------------------|--------------------|-------------------------|-----------------------------------|
| ① Call Out | ⑥ Rig-Up Equipment | ⑪ Pump Spacer 1 | ⑯ PUMP H2O DISPLACEMENT | 21 Pre-Rig Down Safety Meeting |
| ② Depart from Service Center or Other Site | ⑦ Pre-Job Safety Meeting | ⑫ Pump Lead Cement | ⑰ SLOW RATE | 22 Rig-Down Equipment |
| ③ Arrive At Loc | ⑧ Start Job | ⑬ PumpTail Cement | ⑱ BUMP PLUG | 23 Depart Location Safety Meeting |
| ④ Assessment Of Location Safety Meeting | ⑨ Prime Pumps | ⑭ Shutdown | ⑲ CHECK FLOATS | 24 Comment |
| ⑤ Pre-Rig Up Safety Meeting | ⑩ Test Lines | ⑮ Drop Plug | 20 End Job | |

▼ **HALLIBURTON** | iCem® Service

Created: 2014-12-20 05:50:21, Version: 3.0.121

Edit

Customer: WPX ENERGY ROCKY MOUNTAIN LLC-EBUS

Job Date: 12/20/2014 5:59:30 AM

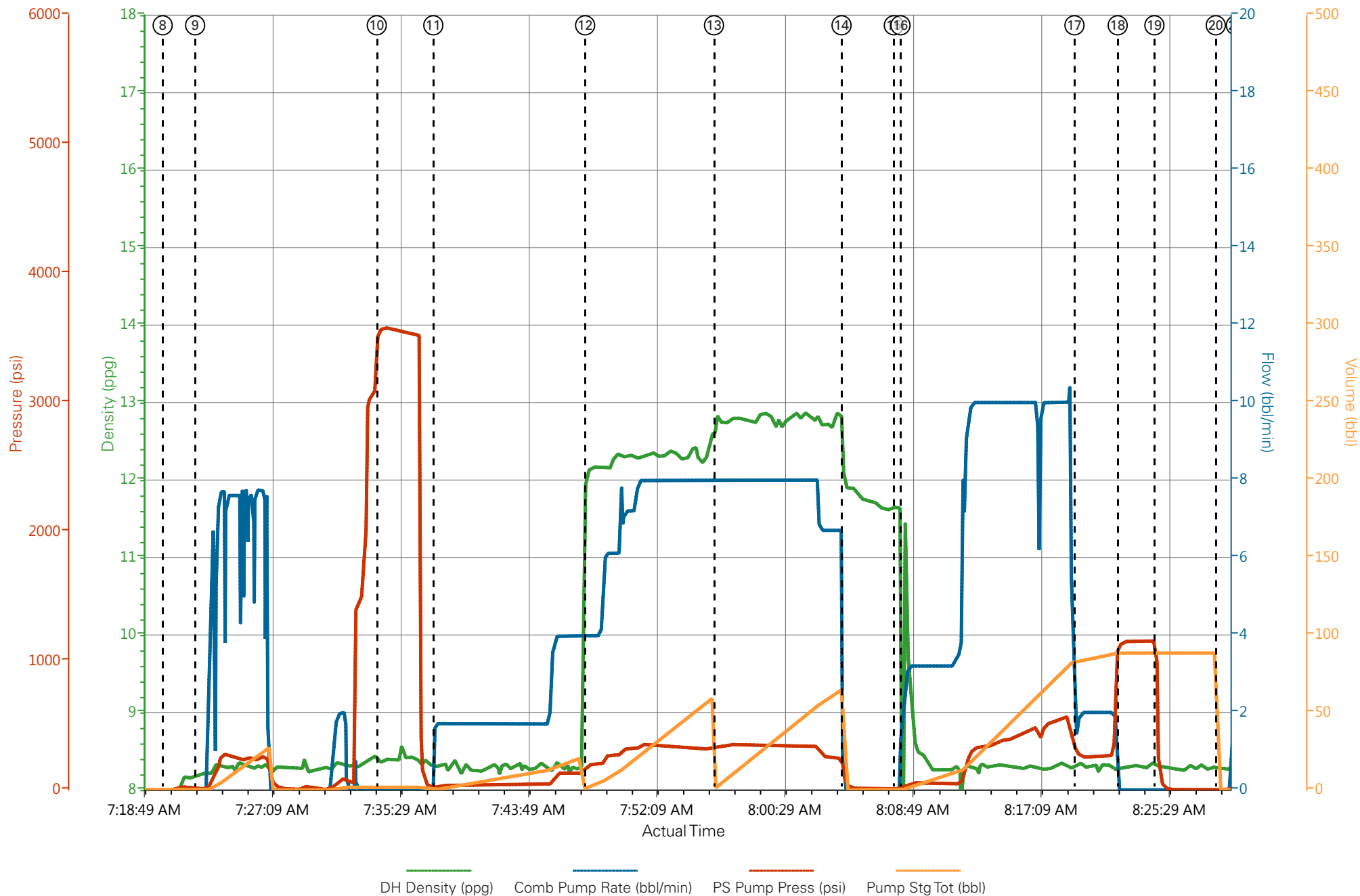
Well: RU 431-7

Representative: CRAIG KUKUS

Sales Order #: 0901953549

ELITE 2 / OPERATOR: DUSTIN HYDE

WPX ENERGY ROCKY MOUNTAIN NABORS 574 CEMENT SURFACE CSG JOB YUBERG RU 431-7



HALLIBURTON

Water Analysis Report

Company: WPX ENERGY
Submitted by: CRAIG KUKUS
Attention: _____
Lease: YOUBERG
Well #: RU 431-7

Date: 12/20/2014
Date Rec.: 12/20/2014
S.O.#: 901953549
Job Type: SURFACE

| | | |
|-----------------------------|-------|-------------|
| Specific Gravity | MAX | 0 |
| pH | 8 | 7 |
| Potassium (K) | 5000 | 200 Mg / L |
| HARDNESS | 500 | 425 Mg / L |
| Iron (FE2) | 300 | 0 Mg / L |
| Chlorides (Cl) | 3000 | 0 Mg / L |
| Sulfates (SO ₄) | 1500 | <200 Mg / L |
| Chlorine (Cl ₂) | | 0 Mg / L |
| Temp | 40-80 | 44 Deg |
| Total Dissolved Solids | | 410 Mg / L |

Respectfully: CRAIG KUKUS

Title: CEMENTING SUPERVISOR

Location: Grand Junction, CO

NOTICE:

This report is limited to the described sample tested. Any person using or relying on this report agrees that Halliburton shall not be liable for any loss or damage whether due to act or omission resulting from such report or its

| | | |
|--|--------------------------------|---|
| Sales Order #: 0901953549 | Line Item: 10 | Survey Conducted Date: 12/20/2014 |
| Customer: WPX ENERGY ROCKY MOUNTAIN LLC-EBUS | | Job Type (BOM): CMT SURFACE CASING BOM |
| Customer Representative: GARY VALLAD | | API / UWI: (leave blank if unknown) 05-045-22346-00 |
| Well Name: YOUBERG | | Well Number: 0080456563 |
| Well Type: DIRECTIONAL GAS | Well Country: USA | |
| H2S Present: No | Well State: COLORADO | Well County: GARFIELD |

Dear Customer,

We hope that you were satisfied with the service quality of this job performed by Halliburton. It is the aim of our management and service personnel to deliver equipment and service of a standard unmatched in the service sector of the energy industry.

Please take the time to let us know if our performance met with your satisfaction. Please be as critical as possible to ensure we constantly improve our service. Your comments are of great value to us and are intended for the exclusive use of Halliburton.

CUSTOMER SATISFACTION SURVEY

| CATEGORY | CUSTOMER SATISFACTION RESPONSE | |
|-------------------------|--|-------------|
| Survey Conducted Date | The date the survey was conducted | 12/20/2014 |
| Survey Interviewer | The survey interviewer is the person who initiated the survey. | HX19742 |
| Customer Participation | Did the customer participate in this survey? (Y/N) | Yes |
| Customer Representative | Enter the Customer representative name | GARY VALLAD |
| HSE | Was our HSE performance satisfactory? Circle Y or N | Yes |
| Equipment | Were you satisfied with our Equipment? Circle Y or N | Yes |
| Personnel | Were you satisfied with our people? Circle Y or N | Yes |
| Customer Comment | Customer's Comment | |

CUSTOMER SIGNATURE

| | | |
|--|--------------------------------|---|
| Sales Order #: 0901953549 | Line Item: 10 | Survey Conducted Date: 12/20/2014 |
| Customer: WPX ENERGY ROCKY MOUNTAIN LLC-EBUS | | Job Type (BOM): CMT SURFACE CASING BOM |
| Customer Representative: GARY VALLAD | | API / UWI: (leave blank if unknown) 05-045-22346-00 |
| Well Name: YOUBERG | | Well Number: 0080456563 |
| Well Type: DIRECTIONAL GAS | Well Country: USA | |
| H2S Present: No | Well State: COLORADO | Well County: GARFIELD |

KEY PERFORMANCE INDICATORS

| | |
|---|------------|
| General | |
| Survey Conducted Date The date the survey was conducted | 12/20/2014 |

| | |
|--|-------------------------|
| Cementing KPI Survey | |
| Type of Job Select the type of job. (Cementing or Non-Cementing) | 0 |
| Select the Maximum Deviation range for this Job What is the highest deviation for the job you just completed? This may not be the maximum well deviation. | Vertical |
| Total Operating Time (hours) Total Operating Hours Including Rig-up, Pumping, Rig-down. Enter in decimal format. | 3 |
| HSE Incident, Accident, Injury HSE Incident, Accident, Injury. This should be recordable incidents only. | No |
| Was the job purpose achieved? Was the job delivered correctly as per customer agreed design? | Yes |
| Operating Hours (Pumping Hours) Total number of hours pumping fluid on this job. Enter in decimal format. | 1 |
| Customer Non-Productive Rig Time (hrs) Lost time due to Halliburton in the start, execution, or completion of an ordered service or product, or delays in a follow-on service. Enter in decimal format. 0 if none. | 0 |
| Type of Rig Classification Job Was Performed Type Of Rig (classification) Job Was Performed On | Drilling Rig (Portable) |
| Number Of JSAs Performed Number Of Jsas Performed | 6 |
| Number of Unplanned Shutdowns Unplanned shutdown is when injection stops for any period of time. | 0 |
| Was this a Primary Cement Job (Yes / No) | Yes |

| | | |
|--|--------------------------------|---|
| Sales Order #: 0901953549 | Line Item: 10 | Survey Conducted Date: 12/20/2014 |
| Customer: WPX ENERGY ROCKY MOUNTAIN LLC-EBUS | | Job Type (BOM): CMT SURFACE CASING BOM |
| Customer Representative: GARY VALLAD | | API / UWI: (leave blank if unknown) 05-045-22346-00 |
| Well Name: YOUBERG | | Well Number: 0080456563 |
| Well Type: DIRECTIONAL GAS | Well Country: USA | |
| H2S Present: No | Well State: COLORADO | Well County: GARFIELD |

| | |
|--|-----|
| Primary Cement Job= Casing job, Liner job, or Tie-back job. | |
| Did We Run Wiper Plugs? Did We Run Top And Bottom Casing Wiper Plugs? | Top |
| Mixing Density of Job Stayed in Designed Density Range (0-100%) Density Range defined as +/- .20 ppg. Calculation: Total BBLs cement mixed at designed density divided by total BBLs of cement multiplied by 100 | 99 |
| Was Automated Density Control Used? Was Automated Density Control (ADC) Used ? | Yes |
| Pump Rate (percent) of Job Stayed At Designed Pump Rate Pump Rate range defined as +/- 1bbl/min. Calculation: Total BBLs of fluid pumped at the designed rate divided by Total BBLs of fluid pumped, multiplied by 100 | 99 |
| Nbr of Remedial Sqz Jobs Rqd - Competition Number Of Remedial Squeeze Jobs Required After Primary Job Performed By Competition | 0 |
| Nbr of Remedial Plug Jobs Rqd - HES Number Of Remedial Plug Jobs Needed After Primary Plug Pumped By HES | 0 |
| Nbr of Remedial Sqz Jobs Rqd - HES Number Of Remedial Squeeze Jobs Required After Primary Job Performed By HES | 0 |