

OPERATOR: **WPX ENERGY**

WELL NAME: RU 41-7

FIELD NAME: RULISON

DRILLING RIG: NABORS 574

API #: 05-045-22350

LOCATION: SEC. 7 T7S R93W

SURFACE HOLE: 2441' FNL , 389' FEL

BOTTOM HOLE: 285' FNL , 464' FEL

SCALE: 1"=100'



533 Bogart Lane, Unit A
Grand Junction, CO 81505
Office (970) 424-5162

RU 41-7

COUNTY: GARFIELD

STATE: COLORADO

DRILLING FLUID: LSND

LOGGER: LUKE DAVENPORT

GROUND ELEVATION: 7737'

KELLY BUSHING: 7763'

TVD VS. MD = -371'

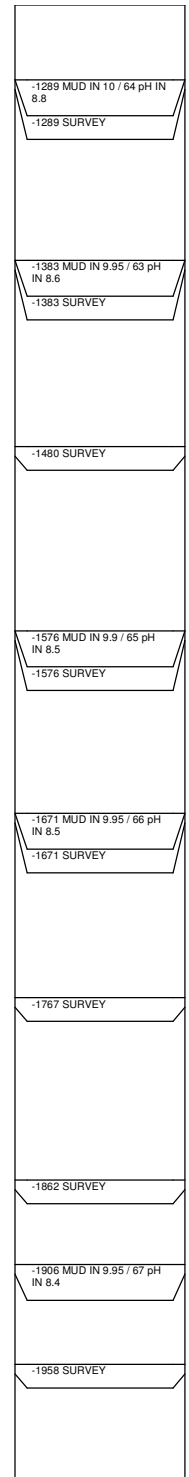
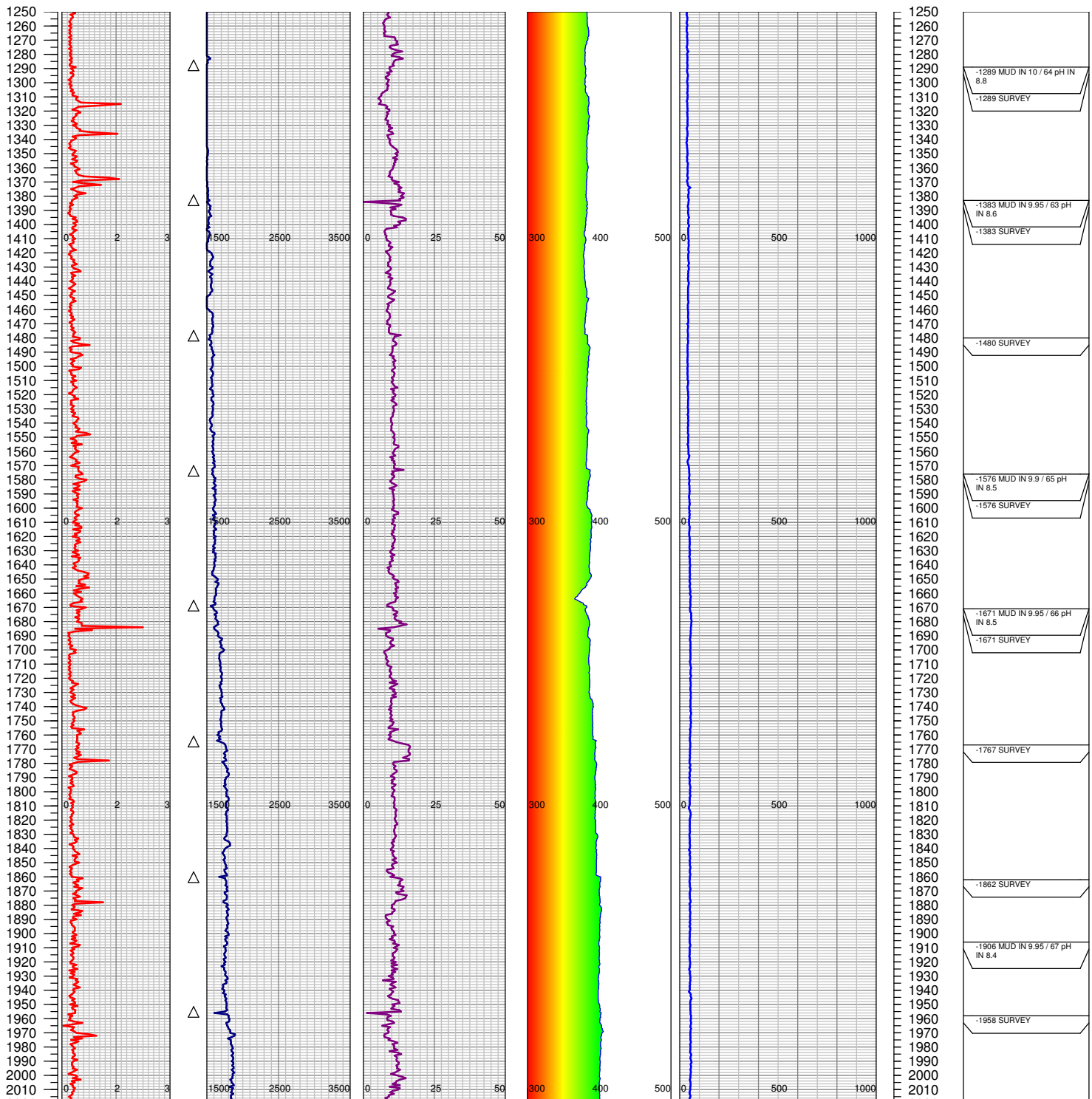
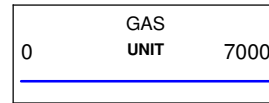
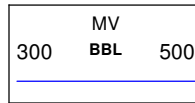
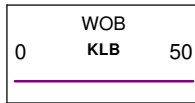
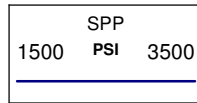
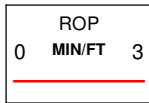
DEPTHS LOGGED: 1250'-10371'

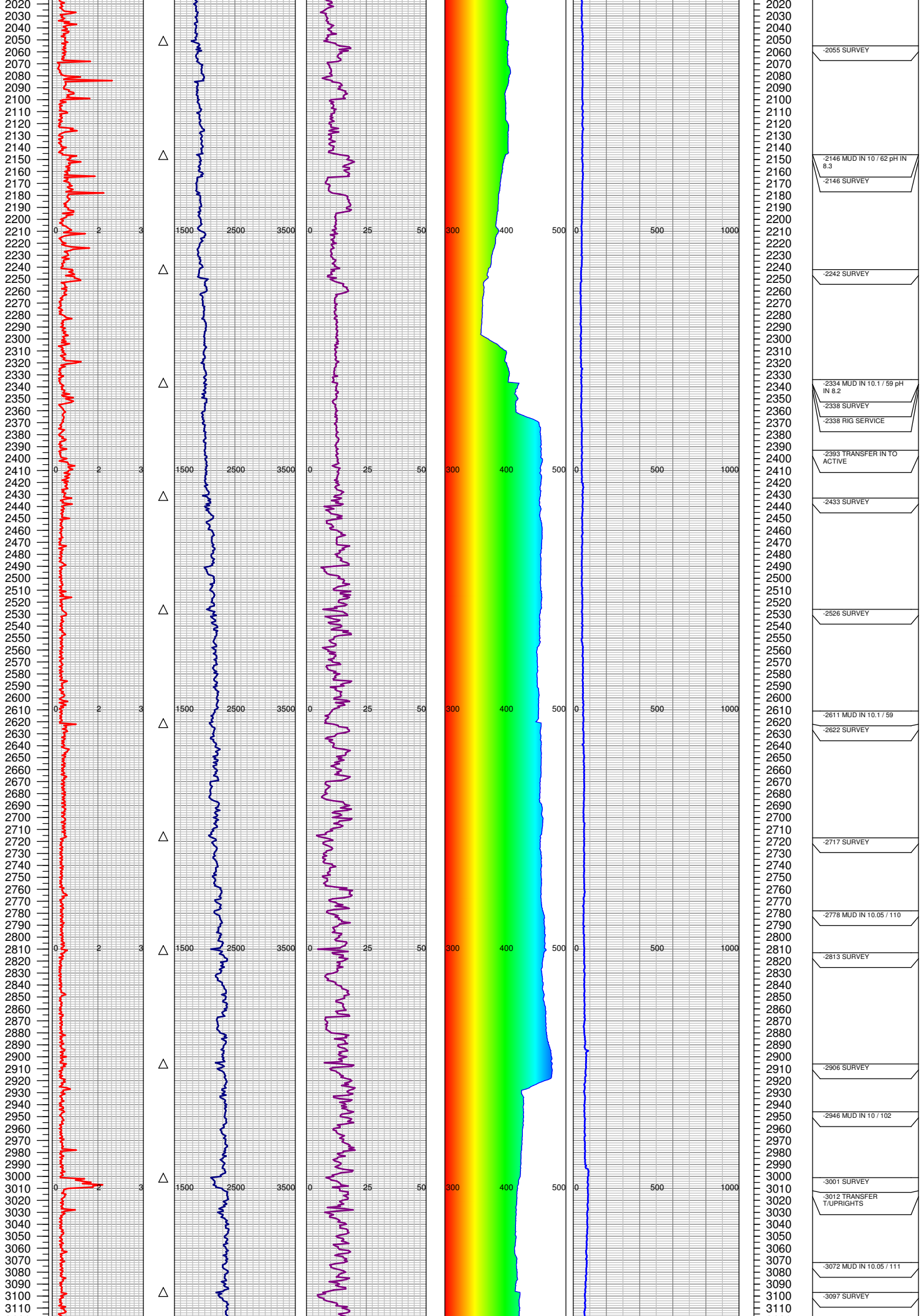
SPUD DATE: 1/17/2015

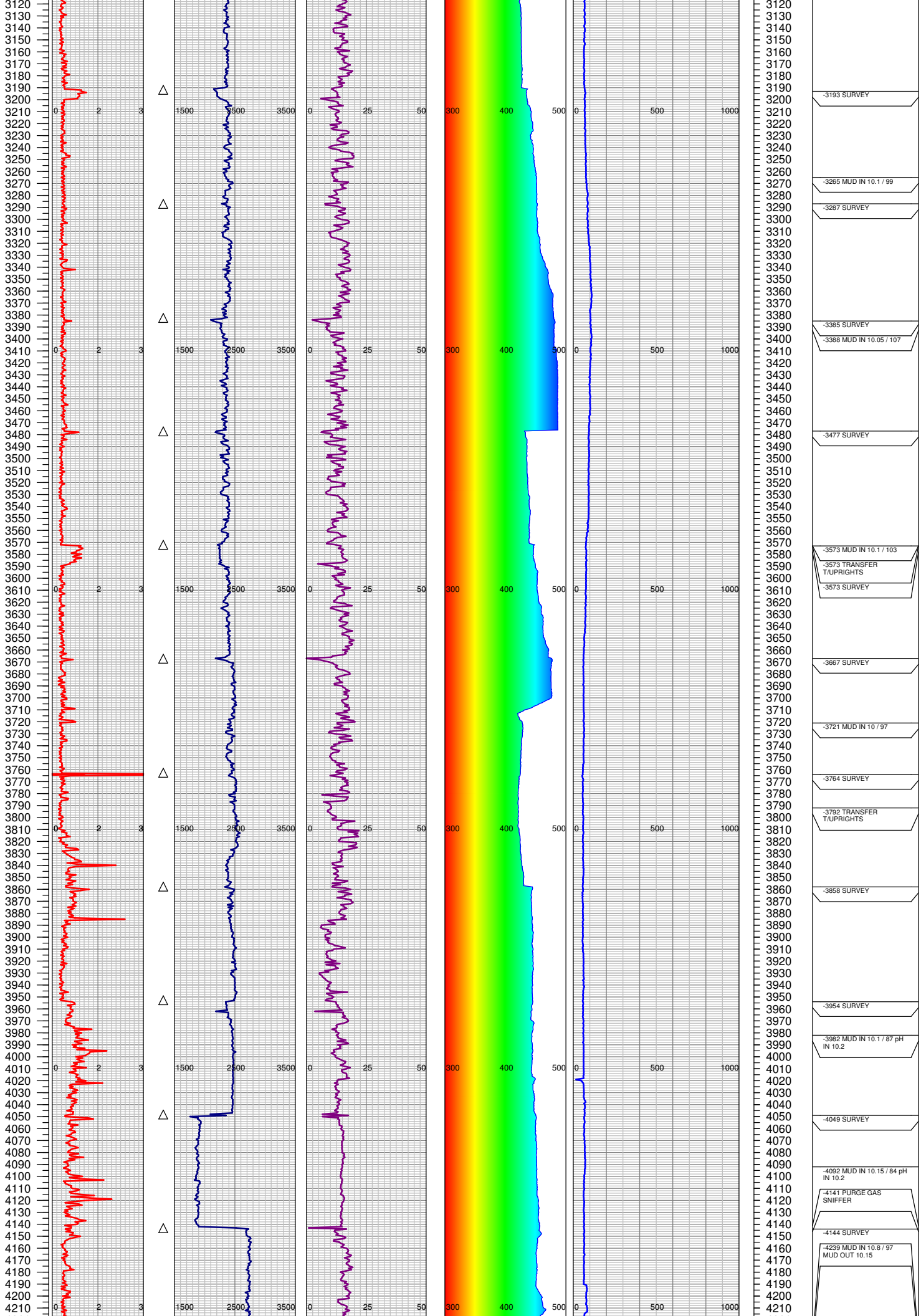
FGS BEGIN LOGGING: 1/19/2015

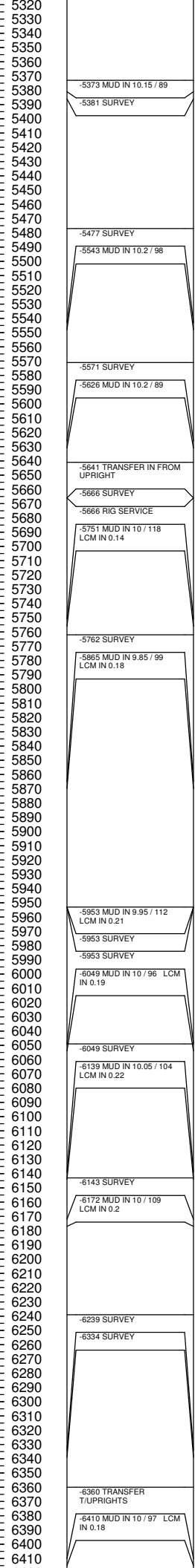
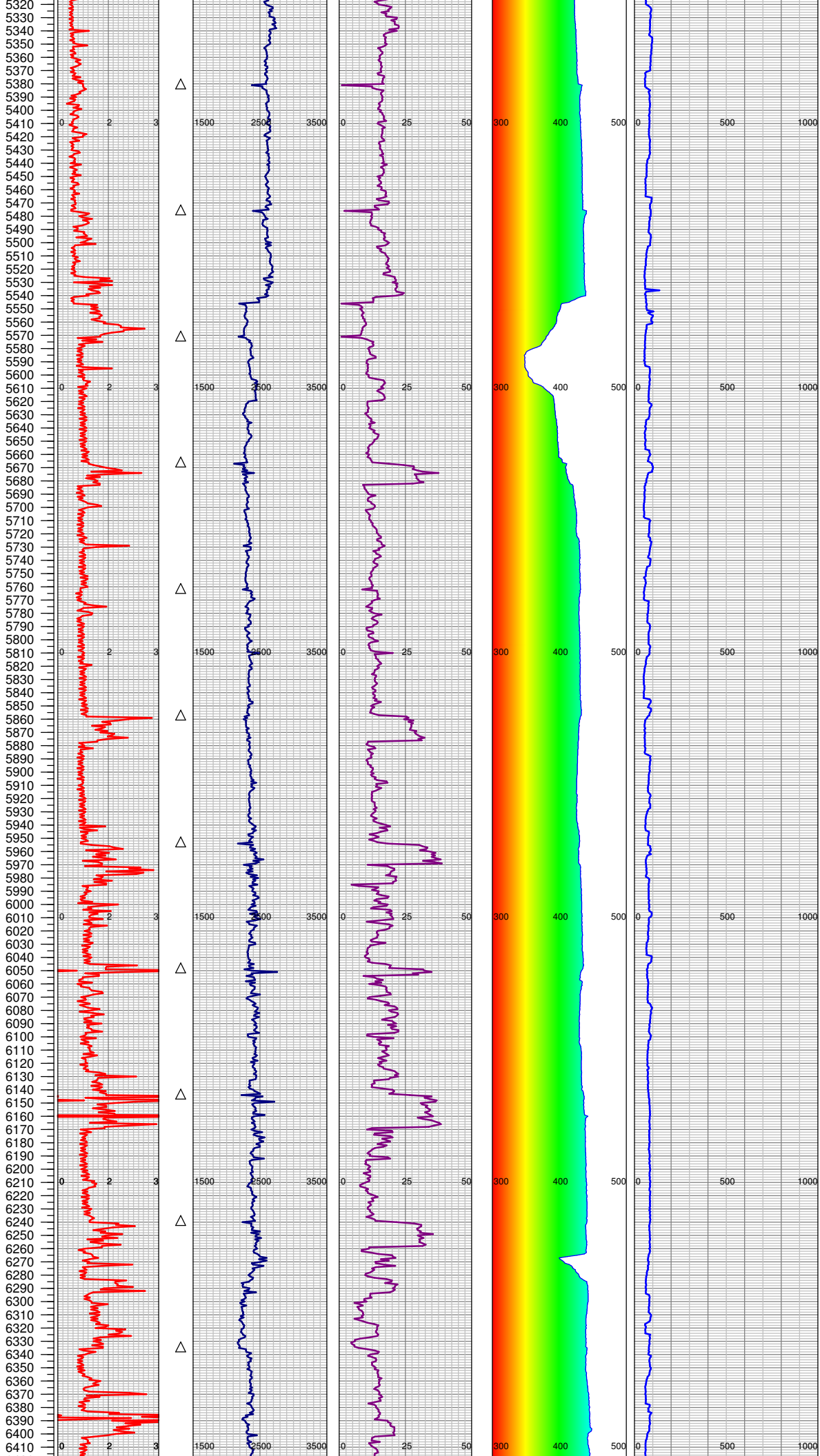
TD DATE: 1/28/2015

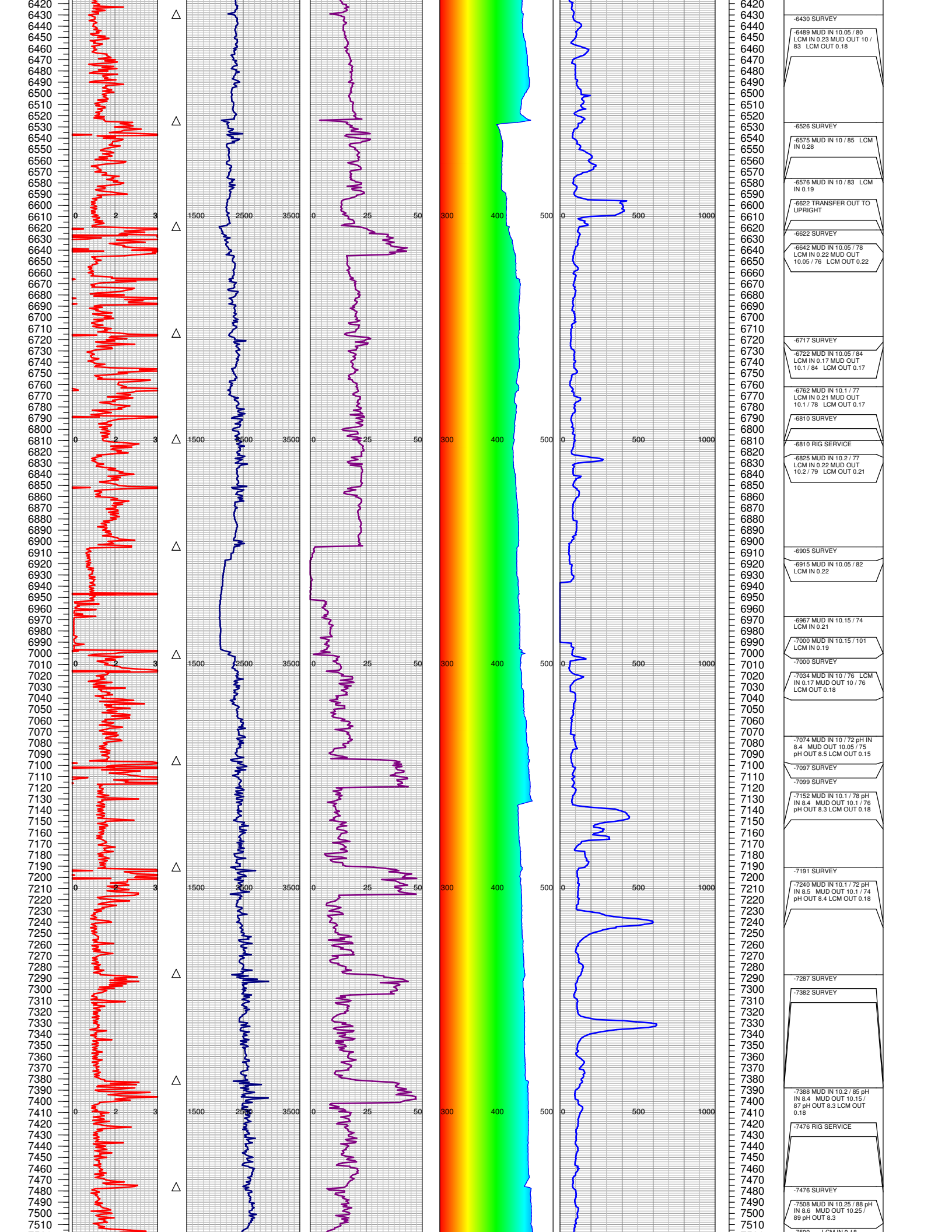
DATES LOGGED: 1/19/2015-1/28/2015

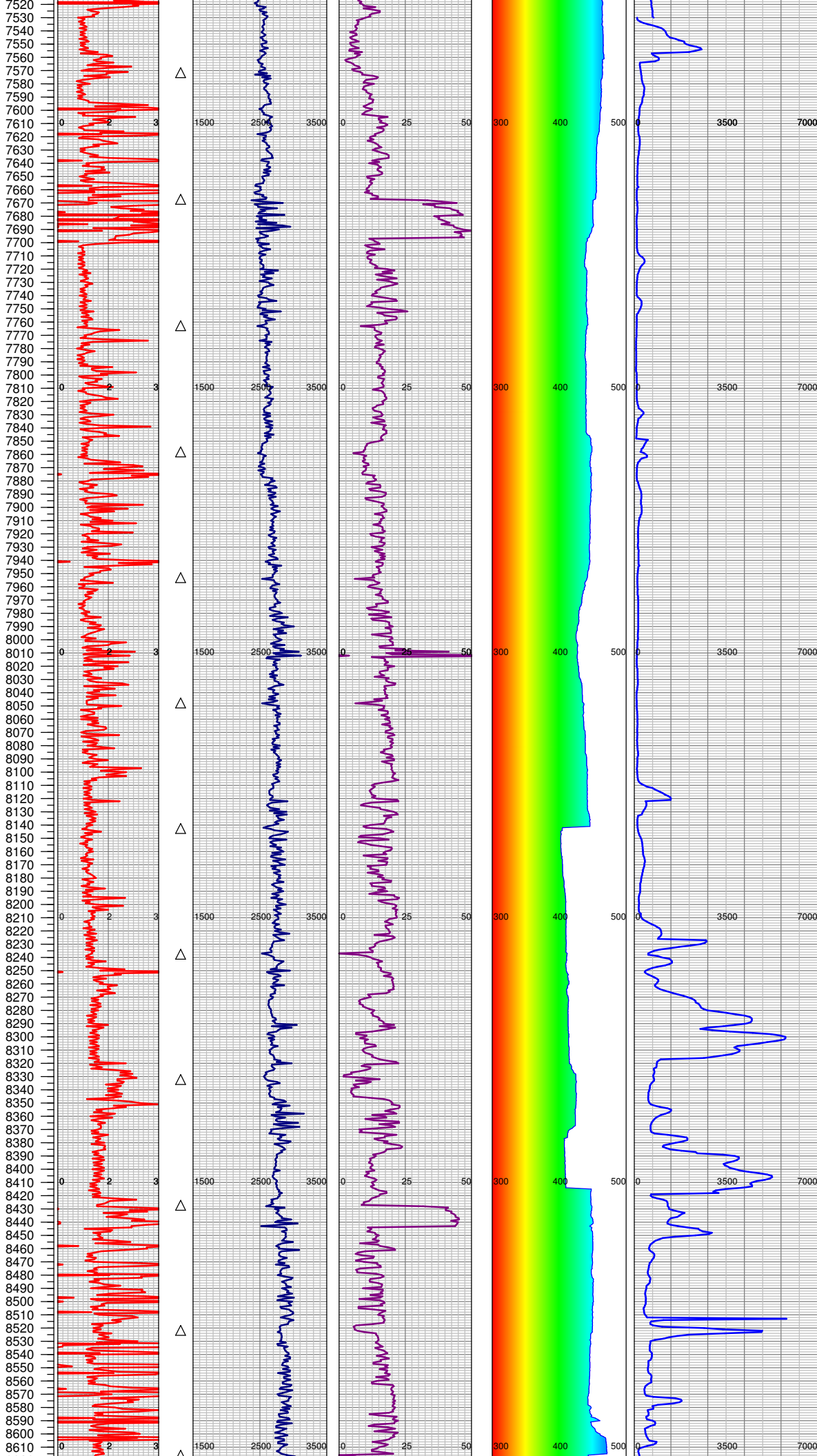




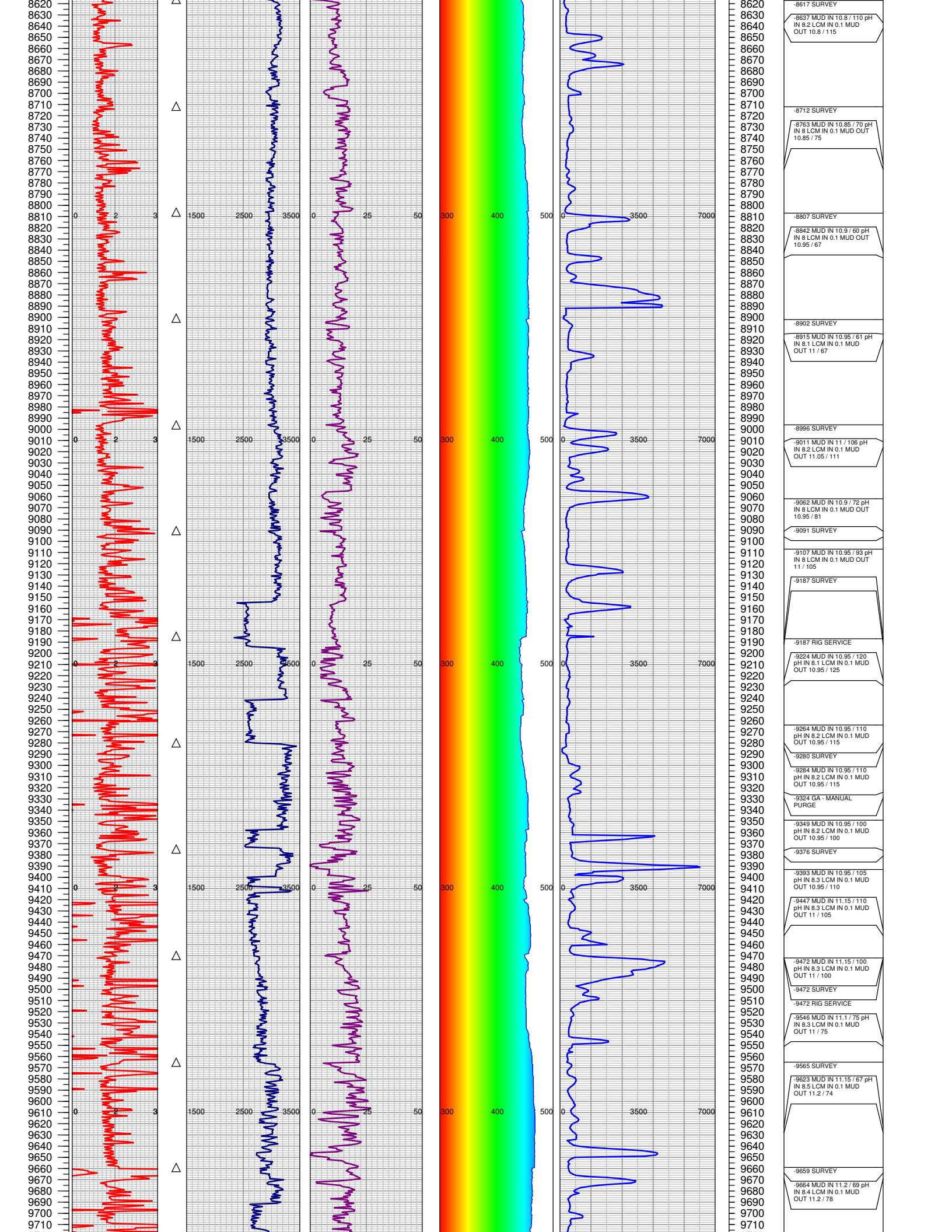


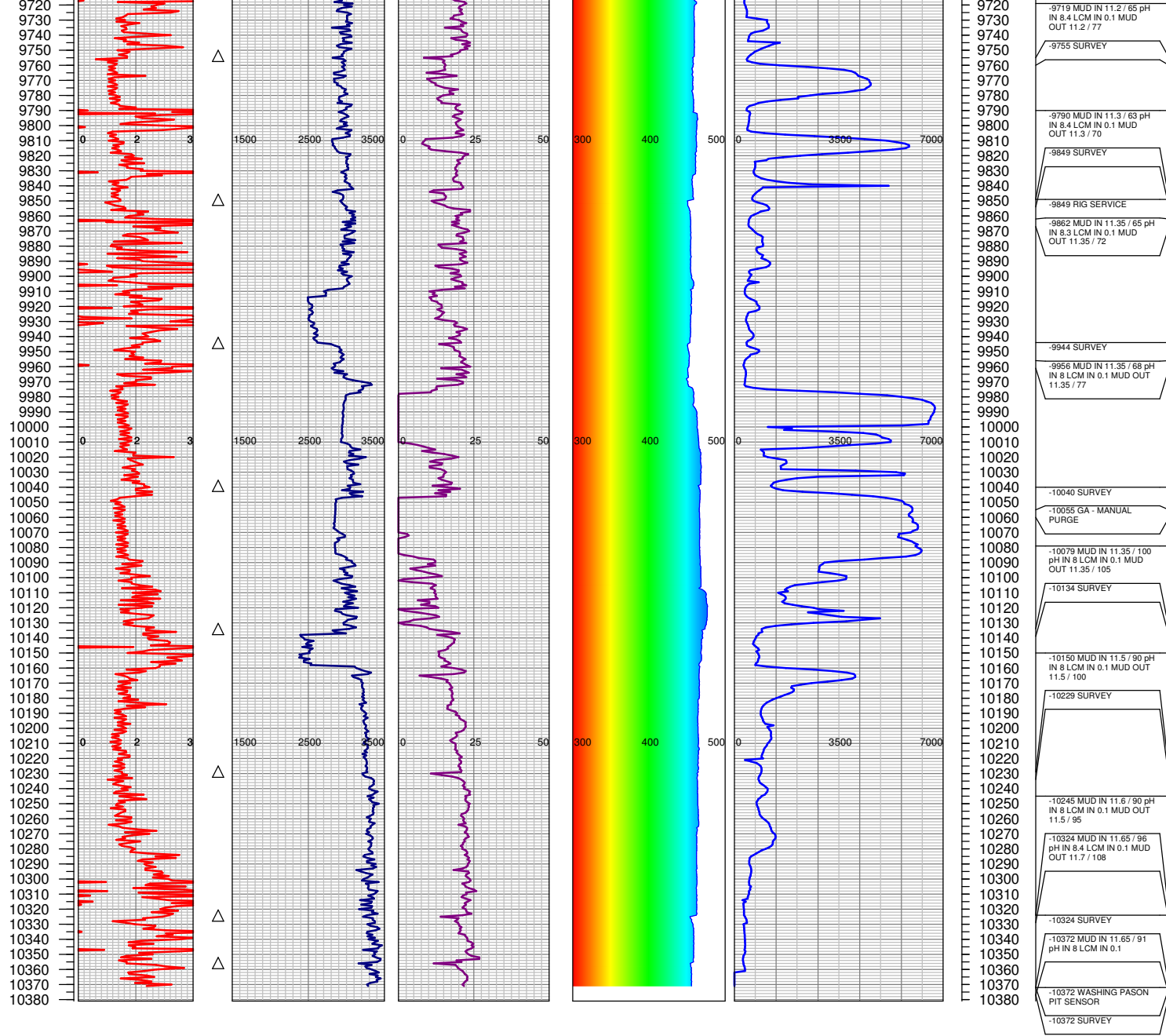






7530	-7538 PURGE GAS SNIFFER
7540	
7550	
7560	
7570	
7580	-7573 SURVEY
7590	-7579 MUD IN 10.25 / 89 LCM IN 0.15
7600	-7580 MUD IN 10.25 / 88 LCM IN 0.16
7610	
7620	-7620 MUD IN 10.2 / 89 LCM IN 0.16
7630	
7640	-7621 MUD IN 10.2 / 90 LCM IN 0.15
7650	
7660	-7667 SURVEY
7670	
7680	
7690	-7683 MUD IN 10.2 / 81 LCM IN 0.16 MUD OUT 10.2 / 84 LCM OUT 0.16
7700	
7710	-7754 MUD IN 10 / 80 LCM IN 0.16 MUD OUT 10 / 78 LCM OUT 0.14
7720	
7730	
7740	
7750	
7760	
7770	-7763 SURVEY
7780	-7822 MUD IN 10.05 / 84 LCM IN 0.15
7790	
7800	
7810	
7820	-7823 MUD IN 10.05 / 84 LCM IN 0.17
7830	
7840	-7858 SURVEY
7850	
7860	
7870	-7868 MUD IN 10.15 / 93 LCM IN 0.14 MUD OUT 10.15 / 96 LCM OUT 0.14
7880	
7890	
7900	-7937 MUD IN 10.3 / 95 LCM IN 0.16 MUD OUT 10.3 / 99 LCM OUT 0.14
7910	
7920	
7930	
7940	
7950	
7960	-7954 SURVEY
7970	-7954 RIG SERVICE
7980	
7990	
8000	
8010	
8020	
8030	-8029 MUD IN 10.1 / 76 pH IN 9.2 MUD OUT 10.1 / 84 pH OUT 9.3 LCM OUT 0.13
8040	
8050	
8060	-8048 SURVEY
8070	
8080	
8090	
8100	
8110	
8120	
8130	
8140	
8150	-8143 SURVEY
8160	-8239 SURVEY
8170	
8180	
8190	
8200	
8210	
8220	
8230	
8240	
8250	
8260	
8270	
8280	-8275 MUD IN 10.3 / 84 pH IN 8.8 MUD OUT 10.15 / 79 pH OUT 8.6
8290	
8300	-8276 LCM IN 0.15
8310	
8320	
8330	
8340	-8335 SURVEY
8350	-8343 MUD IN 10.5 / 92 pH IN 9 MUD OUT 10.5 / 90 pH OUT 8.9 LCM OUT 0.15
8360	
8370	
8380	
8390	
8400	
8410	
8420	
8430	-8430 SURVEY
8440	-8435 LCM IN 0.16
8450	
8460	-8435 MUD IN 10.6 / 69 pH IN 8.8 MUD OUT 10.5 / 73 pH OUT 8.7
8470	
8480	
8490	-8497 MUD IN 10.7 / 100 pH IN 8.8 LCM IN 0.1 MUD OUT 10.7 / 97 pH OUT 8.7 LCM OUT 0.1
8500	
8510	
8520	
8530	-8524 SURVEY
8540	-8561 MUD IN 10.7 / 104 LCM IN 0.12 MUD OUT 10.7 / 109 LCM OUT 0.14
8550	
8560	
8570	
8580	
8590	
8600	
8610	





TOTAL DEPTH = 10371'

FGS RELEASED: 1/18/2015