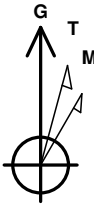
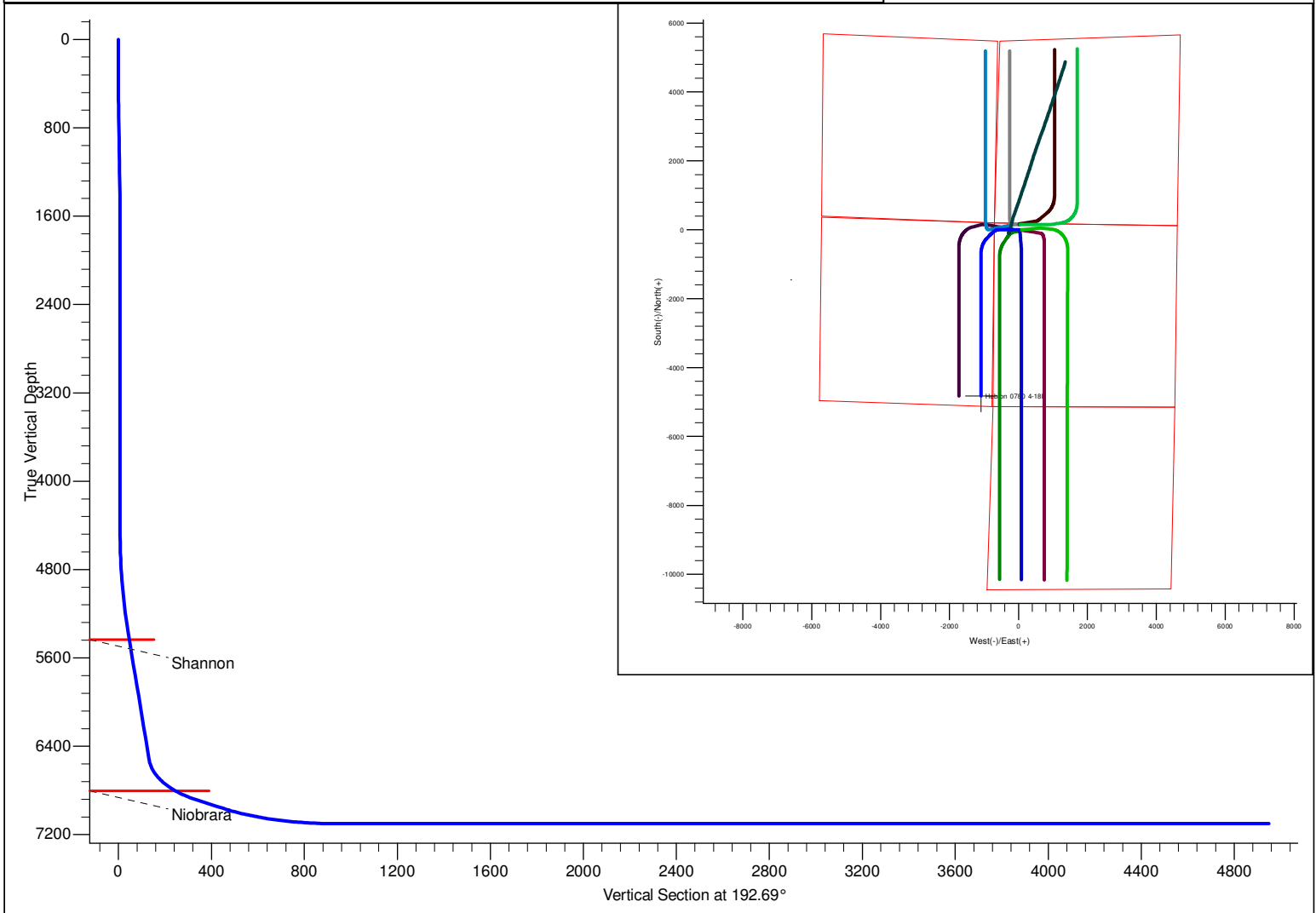


PROJECT DETAILS: North Park Basin											Azimuths to Grid North True North: 0.58° Magnetic North: 10.48°				
Geodetic System: US State Plane 1983 Datum: North American Datum 1983 Ellipsoid: GRS 1980 Zone: Colorado Northern Zone System Datum: Mean Sea Level											Magnetic Field Strength: 53188.9snT Dip Angle: 66.97° Date: 12/31/2009 Model: IGRF200510				
FORMATION TOP DETAILS											CASING DETAILS				
TVDPathMDPath 5433.0 5455.4 6803.0 6946.4										Formation Shannon Niobrara		DipAngleDipDir 0.00 0.00		No casing data is available	
DESIGN DETAILS: Design #1										Project: North Park Basin Site: T7N-R80W-S17 Well: Hebron 0780 4-18H Wellbore: Wellbore #1 Design: Design #1					
0' Vertical Section coordinates															
Type	Target	Azimuth	Origin	Type	N/S	E/W	From	TVD							
TD		192.69	Slot		0.0	0.0		0.0							



SECTION DETAILS										
Sec	MD	Inc	Azi	TVD	+N/-S	+E/-W	Dleg	TFace	VSect	Target
1	0.0	0.00	0.00	0.0	0.0	0.0	0.00	0.00	0.0	
2	500.0	0.00	0.00	500.0	0.0	0.0	0.00	0.00	0.0	
3	594.9	1.90	270.00	594.9	0.0	-1.6	2.00	270.00	0.3	
4	1405.6	1.90	270.00	1405.1	0.0	-28.4	0.00	0.00	6.2	
5	1500.5	0.00	0.00	1500.0	0.0	-30.0	2.00	180.00	6.6	
6	4425.0	0.00	0.00	4424.5	0.0	-30.0	0.00	0.00	6.6	
7	5404.0	19.58	270.00	5384.6	0.0	-195.7	2.00	270.00	43.0	
8	6610.5	19.58	270.00	6521.3	0.0	-600.0	0.00	0.00	131.8	
9	7089.7	60.00	223.30	6888.5	-160.5	-836.6	10.00	-58.12	340.4	
10	7239.7	60.00	223.30	6963.5	-255.0	-925.7	0.00	0.00	452.2	
11	7749.0	90.00	180.00	7100.0	-699.9	-1087.7	10.00	-62.05	921.8	Hebron 4-18H
12	11877.2	90.00	180.00	7100.0	-4828.0	-1087.5	0.00	0.00	4949.0	Hebron 4-18H

SandRidge Energy

**North Park Basin
T7N-R80W-S17
Hebron 0780 4-18H**

Wellbore #1

Plan: Design #1

Standard Survey Report

14 December, 2015

SandRidge Energy

Survey Report

Company:	SandRidge Energy	Local Co-ordinate Reference:	Well Hebron 0780 4-18H
Project:	North Park Basin	TVD Reference:	WELL @ 8172.0usft (Original Well Elev)
Site:	T7N-R80W-S17	MD Reference:	WELL @ 8172.0usft (Original Well Elev)
Well:	Hebron 0780 4-18H	North Reference:	Grid
Wellbore:	Wellbore #1	Survey Calculation Method:	Minimum Curvature
Design:	Design #1	Database:	EDMProd

Project	North Park Basin		
Map System:	US State Plane 1983	System Datum:	Mean Sea Level
Geo Datum:	North American Datum 1983		
Map Zone:	Colorado Northern Zone		

Site	T7N-R80W-S17				
Site Position:		Northing:	1,456,885.51 usft	Latitude:	40° 35' 2.501 N
From:	Lat/Long	Easting:	2,748,625.91 usft	Longitude:	106° 24' 18.140 W
Position Uncertainty:	0.0 usft	Slot Radius:	13-3/16 "	Grid Convergence:	-0.58 °

Well	Hebron 0780 4-18H					
Well Position	+N/-S	0.0 usft	Northing:	1,456,963.28 usft	Latitude:	40° 35' 3.282 N
	+E/-W	0.0 usft	Easting:	2,748,750.91 usft	Longitude:	106° 24' 16.530 W
Position Uncertainty		0.0 usft	Wellhead Elevation:	0.0 usft	Ground Level:	8,156.0 usft

Wellbore	Wellbore #1				
Magnetics	Model Name	Sample Date	Declination (°)	Dip Angle (°)	Field Strength (nT)
	IGRF200510	12/31/2009	9.89	66.97	53,189

Design		Design #1				
Audit Notes:						
Version:	Phase:	PROTOTYPE			Tie On Depth:	0.0
Vertical Section:	Depth From (TVD) (usft)	+N/-S (usft)	+E/-W (usft)	Direction (°)		
	0.0	0.0	0.0	192.69		

Survey Tool Program	Date	12/14/2015			
From (usft)	To (usft)	Survey (Wellbore)	Tool Name	Description	
0.0	11,877.2	Design #1 (Wellbore #1)	Sperry MWD	Fixed:v2:standard declination	

Planned Survey										
Measured Depth (usft)	Inclination (°)	Azimuth (°)	Vertical Depth (usft)	+N/-S (usft)	+E/-W (usft)	Vertical Section (usft)	Dogleg Rate (°/100usft)	Build Rate (°/100usft)	Turn Rate (°/100usft)	
0.0	0.00	0.00	0.0	0.0	0.0	0.0	0.00	0.00	0.00	
25.0	0.00	0.00	25.0	0.0	0.0	0.0	0.00	0.00	0.00	
50.0	0.00	0.00	50.0	0.0	0.0	0.0	0.00	0.00	0.00	
75.0	0.00	0.00	75.0	0.0	0.0	0.0	0.00	0.00	0.00	
100.0	0.00	0.00	100.0	0.0	0.0	0.0	0.00	0.00	0.00	
125.0	0.00	0.00	125.0	0.0	0.0	0.0	0.00	0.00	0.00	
150.0	0.00	0.00	150.0	0.0	0.0	0.0	0.00	0.00	0.00	
175.0	0.00	0.00	175.0	0.0	0.0	0.0	0.00	0.00	0.00	
200.0	0.00	0.00	200.0	0.0	0.0	0.0	0.00	0.00	0.00	
225.0	0.00	0.00	225.0	0.0	0.0	0.0	0.00	0.00	0.00	

SandRidge Energy

Survey Report

Company:	SandRidge Energy	Local Co-ordinate Reference:	Well Hebron 0780 4-18H
Project:	North Park Basin	TVD Reference:	WELL @ 8172.0usft (Original Well Elev)
Site:	T7N-R80W-S17	MD Reference:	WELL @ 8172.0usft (Original Well Elev)
Well:	Hebron 0780 4-18H	North Reference:	Grid
Wellbore:	Wellbore #1	Survey Calculation Method:	Minimum Curvature
Design:	Design #1	Database:	EDMProd

Planned Survey

Measured Depth (usft)	Inclination (°)	Azimuth (°)	Vertical Depth (usft)	+N/-S (usft)	+E/-W (usft)	Vertical Section (usft)	Dogleg Rate (°/100usft)	Build Rate (°/100usft)	Turn Rate (°/100usft)
250.0	0.00	0.00	250.0	0.0	0.0	0.0	0.00	0.00	0.00
275.0	0.00	0.00	275.0	0.0	0.0	0.0	0.00	0.00	0.00
300.0	0.00	0.00	300.0	0.0	0.0	0.0	0.00	0.00	0.00
325.0	0.00	0.00	325.0	0.0	0.0	0.0	0.00	0.00	0.00
350.0	0.00	0.00	350.0	0.0	0.0	0.0	0.00	0.00	0.00
375.0	0.00	0.00	375.0	0.0	0.0	0.0	0.00	0.00	0.00
400.0	0.00	0.00	400.0	0.0	0.0	0.0	0.00	0.00	0.00
425.0	0.00	0.00	425.0	0.0	0.0	0.0	0.00	0.00	0.00
450.0	0.00	0.00	450.0	0.0	0.0	0.0	0.00	0.00	0.00
475.0	0.00	0.00	475.0	0.0	0.0	0.0	0.00	0.00	0.00
500.0	0.00	0.00	500.0	0.0	0.0	0.0	0.00	0.00	0.00
525.0	0.50	270.00	525.0	0.0	-0.1	0.0	2.00	2.00	0.00
550.0	1.00	270.00	550.0	0.0	-0.4	0.1	2.00	2.00	0.00
575.0	1.50	270.00	575.0	0.0	-1.0	0.2	2.00	2.00	0.00
594.9	1.90	270.00	594.9	0.0	-1.6	0.3	2.00	2.00	0.00
600.0	1.90	270.00	600.0	0.0	-1.7	0.4	0.00	0.00	0.00
625.0	1.90	270.00	625.0	0.0	-2.6	0.6	0.00	0.00	0.00
650.0	1.90	270.00	650.0	0.0	-3.4	0.7	0.00	0.00	0.00
675.0	1.90	270.00	674.9	0.0	-4.2	0.9	0.00	0.00	0.00
700.0	1.90	270.00	699.9	0.0	-5.1	1.1	0.00	0.00	0.00
725.0	1.90	270.00	724.9	0.0	-5.9	1.3	0.00	0.00	0.00
750.0	1.90	270.00	749.9	0.0	-6.7	1.5	0.00	0.00	0.00
775.0	1.90	270.00	774.9	0.0	-7.5	1.7	0.00	0.00	0.00
800.0	1.90	270.00	799.9	0.0	-8.4	1.8	0.00	0.00	0.00
825.0	1.90	270.00	824.9	0.0	-9.2	2.0	0.00	0.00	0.00
850.0	1.90	270.00	849.8	0.0	-10.0	2.2	0.00	0.00	0.00
875.0	1.90	270.00	874.8	0.0	-10.9	2.4	0.00	0.00	0.00
900.0	1.90	270.00	899.8	0.0	-11.7	2.6	0.00	0.00	0.00
925.0	1.90	270.00	924.8	0.0	-12.5	2.7	0.00	0.00	0.00
950.0	1.90	270.00	949.8	0.0	-13.3	2.9	0.00	0.00	0.00
975.0	1.90	270.00	974.8	0.0	-14.2	3.1	0.00	0.00	0.00
1,000.0	1.90	270.00	999.8	0.0	-15.0	3.3	0.00	0.00	0.00
1,025.0	1.90	270.00	1,024.7	0.0	-15.8	3.5	0.00	0.00	0.00
1,050.0	1.90	270.00	1,049.7	0.0	-16.6	3.7	0.00	0.00	0.00
1,075.0	1.90	270.00	1,074.7	0.0	-17.5	3.8	0.00	0.00	0.00
1,100.0	1.90	270.00	1,099.7	0.0	-18.3	4.0	0.00	0.00	0.00
1,125.0	1.90	270.00	1,124.7	0.0	-19.1	4.2	0.00	0.00	0.00
1,150.0	1.90	270.00	1,149.7	0.0	-20.0	4.4	0.00	0.00	0.00
1,175.0	1.90	270.00	1,174.7	0.0	-20.8	4.6	0.00	0.00	0.00
1,200.0	1.90	270.00	1,199.7	0.0	-21.6	4.8	0.00	0.00	0.00
1,225.0	1.90	270.00	1,224.6	0.0	-22.4	4.9	0.00	0.00	0.00
1,250.0	1.90	270.00	1,249.6	0.0	-23.3	5.1	0.00	0.00	0.00
1,275.0	1.90	270.00	1,274.6	0.0	-24.1	5.3	0.00	0.00	0.00
1,300.0	1.90	270.00	1,299.6	0.0	-24.9	5.5	0.00	0.00	0.00

SandRidge Energy

Survey Report

Company:	SandRidge Energy	Local Co-ordinate Reference:	Well Hebron 0780 4-18H
Project:	North Park Basin	TVD Reference:	WELL @ 8172.0usft (Original Well Elev)
Site:	T7N-R80W-S17	MD Reference:	WELL @ 8172.0usft (Original Well Elev)
Well:	Hebron 0780 4-18H	North Reference:	Grid
Wellbore:	Wellbore #1	Survey Calculation Method:	Minimum Curvature
Design:	Design #1	Database:	EDMProd

Planned Survey

Measured Depth (usft)	Inclination (°)	Azimuth (°)	Vertical Depth (usft)	+N/-S (usft)	+E/-W (usft)	Vertical Section (usft)	Dogleg Rate (°/100usft)	Build Rate (°/100usft)	Turn Rate (°/100usft)
1,325.0	1.90	270.00	1,324.6	0.0	-25.8	5.7	0.00	0.00	0.00
1,350.0	1.90	270.00	1,349.6	0.0	-26.6	5.8	0.00	0.00	0.00
1,375.0	1.90	270.00	1,374.6	0.0	-27.4	6.0	0.00	0.00	0.00
1,400.0	1.90	270.00	1,399.5	0.0	-28.2	6.2	0.00	0.00	0.00
1,405.6	1.90	270.00	1,405.1	0.0	-28.4	6.2	0.00	0.00	0.00
1,425.0	1.51	270.00	1,424.5	0.0	-29.0	6.4	2.00	-2.00	0.00
1,450.0	1.01	270.00	1,449.5	0.0	-29.6	6.5	2.00	-2.00	0.00
1,475.0	0.51	270.00	1,474.5	0.0	-29.9	6.6	2.00	-2.00	0.00
1,500.0	0.01	270.00	1,499.5	0.0	-30.0	6.6	2.00	-2.00	0.00
1,500.5	0.00	0.00	1,500.0	0.0	-30.0	6.6	2.00	-2.00	0.00
1,525.0	0.00	0.00	1,524.5	0.0	-30.0	6.6	0.00	0.00	0.00
1,550.0	0.00	0.00	1,549.5	0.0	-30.0	6.6	0.00	0.00	0.00
1,575.0	0.00	0.00	1,574.5	0.0	-30.0	6.6	0.00	0.00	0.00
1,600.0	0.00	0.00	1,599.5	0.0	-30.0	6.6	0.00	0.00	0.00
1,625.0	0.00	0.00	1,624.5	0.0	-30.0	6.6	0.00	0.00	0.00
1,650.0	0.00	0.00	1,649.5	0.0	-30.0	6.6	0.00	0.00	0.00
1,675.0	0.00	0.00	1,674.5	0.0	-30.0	6.6	0.00	0.00	0.00
1,700.0	0.00	0.00	1,699.5	0.0	-30.0	6.6	0.00	0.00	0.00
1,725.0	0.00	0.00	1,724.5	0.0	-30.0	6.6	0.00	0.00	0.00
1,750.0	0.00	0.00	1,749.5	0.0	-30.0	6.6	0.00	0.00	0.00
1,775.0	0.00	0.00	1,774.5	0.0	-30.0	6.6	0.00	0.00	0.00
1,800.0	0.00	0.00	1,799.5	0.0	-30.0	6.6	0.00	0.00	0.00
1,825.0	0.00	0.00	1,824.5	0.0	-30.0	6.6	0.00	0.00	0.00
1,850.0	0.00	0.00	1,849.5	0.0	-30.0	6.6	0.00	0.00	0.00
1,875.0	0.00	0.00	1,874.5	0.0	-30.0	6.6	0.00	0.00	0.00
1,900.0	0.00	0.00	1,899.5	0.0	-30.0	6.6	0.00	0.00	0.00
1,925.0	0.00	0.00	1,924.5	0.0	-30.0	6.6	0.00	0.00	0.00
1,950.0	0.00	0.00	1,949.5	0.0	-30.0	6.6	0.00	0.00	0.00
1,975.0	0.00	0.00	1,974.5	0.0	-30.0	6.6	0.00	0.00	0.00
2,000.0	0.00	0.00	1,999.5	0.0	-30.0	6.6	0.00	0.00	0.00
2,025.0	0.00	0.00	2,024.5	0.0	-30.0	6.6	0.00	0.00	0.00
2,050.0	0.00	0.00	2,049.5	0.0	-30.0	6.6	0.00	0.00	0.00
2,075.0	0.00	0.00	2,074.5	0.0	-30.0	6.6	0.00	0.00	0.00
2,100.0	0.00	0.00	2,099.5	0.0	-30.0	6.6	0.00	0.00	0.00
2,125.0	0.00	0.00	2,124.5	0.0	-30.0	6.6	0.00	0.00	0.00
2,150.0	0.00	0.00	2,149.5	0.0	-30.0	6.6	0.00	0.00	0.00
2,175.0	0.00	0.00	2,174.5	0.0	-30.0	6.6	0.00	0.00	0.00
2,200.0	0.00	0.00	2,199.5	0.0	-30.0	6.6	0.00	0.00	0.00
2,225.0	0.00	0.00	2,224.5	0.0	-30.0	6.6	0.00	0.00	0.00
2,250.0	0.00	0.00	2,249.5	0.0	-30.0	6.6	0.00	0.00	0.00
2,275.0	0.00	0.00	2,274.5	0.0	-30.0	6.6	0.00	0.00	0.00
2,300.0	0.00	0.00	2,299.5	0.0	-30.0	6.6	0.00	0.00	0.00
2,325.0	0.00	0.00	2,324.5	0.0	-30.0	6.6	0.00	0.00	0.00

SandRidge Energy

Survey Report

Company:	SandRidge Energy	Local Co-ordinate Reference:	Well Hebron 0780 4-18H
Project:	North Park Basin	TVD Reference:	WELL @ 8172.0usft (Original Well Elev)
Site:	T7N-R80W-S17	MD Reference:	WELL @ 8172.0usft (Original Well Elev)
Well:	Hebron 0780 4-18H	North Reference:	Grid
Wellbore:	Wellbore #1	Survey Calculation Method:	Minimum Curvature
Design:	Design #1	Database:	EDMProd

Planned Survey

Measured Depth (usft)	Inclination (°)	Azimuth (°)	Vertical Depth (usft)	+N/-S (usft)	+E/-W (usft)	Vertical Section (usft)	Dogleg Rate (°/100usft)	Build Rate (°/100usft)	Turn Rate (°/100usft)
2,350.0	0.00	0.00	2,349.5	0.0	-30.0	6.6	0.00	0.00	0.00
2,375.0	0.00	0.00	2,374.5	0.0	-30.0	6.6	0.00	0.00	0.00
2,400.0	0.00	0.00	2,399.5	0.0	-30.0	6.6	0.00	0.00	0.00
2,425.0	0.00	0.00	2,424.5	0.0	-30.0	6.6	0.00	0.00	0.00
2,450.0	0.00	0.00	2,449.5	0.0	-30.0	6.6	0.00	0.00	0.00
2,475.0	0.00	0.00	2,474.5	0.0	-30.0	6.6	0.00	0.00	0.00
2,500.0	0.00	0.00	2,499.5	0.0	-30.0	6.6	0.00	0.00	0.00
2,525.0	0.00	0.00	2,524.5	0.0	-30.0	6.6	0.00	0.00	0.00
2,550.0	0.00	0.00	2,549.5	0.0	-30.0	6.6	0.00	0.00	0.00
2,575.0	0.00	0.00	2,574.5	0.0	-30.0	6.6	0.00	0.00	0.00
2,600.0	0.00	0.00	2,599.5	0.0	-30.0	6.6	0.00	0.00	0.00
2,625.0	0.00	0.00	2,624.5	0.0	-30.0	6.6	0.00	0.00	0.00
2,650.0	0.00	0.00	2,649.5	0.0	-30.0	6.6	0.00	0.00	0.00
2,675.0	0.00	0.00	2,674.5	0.0	-30.0	6.6	0.00	0.00	0.00
2,700.0	0.00	0.00	2,699.5	0.0	-30.0	6.6	0.00	0.00	0.00
2,725.0	0.00	0.00	2,724.5	0.0	-30.0	6.6	0.00	0.00	0.00
2,750.0	0.00	0.00	2,749.5	0.0	-30.0	6.6	0.00	0.00	0.00
2,775.0	0.00	0.00	2,774.5	0.0	-30.0	6.6	0.00	0.00	0.00
2,800.0	0.00	0.00	2,799.5	0.0	-30.0	6.6	0.00	0.00	0.00
2,825.0	0.00	0.00	2,824.5	0.0	-30.0	6.6	0.00	0.00	0.00
2,850.0	0.00	0.00	2,849.5	0.0	-30.0	6.6	0.00	0.00	0.00
2,875.0	0.00	0.00	2,874.5	0.0	-30.0	6.6	0.00	0.00	0.00
2,900.0	0.00	0.00	2,899.5	0.0	-30.0	6.6	0.00	0.00	0.00
2,925.0	0.00	0.00	2,924.5	0.0	-30.0	6.6	0.00	0.00	0.00
2,950.0	0.00	0.00	2,949.5	0.0	-30.0	6.6	0.00	0.00	0.00
2,975.0	0.00	0.00	2,974.5	0.0	-30.0	6.6	0.00	0.00	0.00
3,000.0	0.00	0.00	2,999.5	0.0	-30.0	6.6	0.00	0.00	0.00
3,025.0	0.00	0.00	3,024.5	0.0	-30.0	6.6	0.00	0.00	0.00
3,050.0	0.00	0.00	3,049.5	0.0	-30.0	6.6	0.00	0.00	0.00
3,075.0	0.00	0.00	3,074.5	0.0	-30.0	6.6	0.00	0.00	0.00
3,100.0	0.00	0.00	3,099.5	0.0	-30.0	6.6	0.00	0.00	0.00
3,125.0	0.00	0.00	3,124.5	0.0	-30.0	6.6	0.00	0.00	0.00
3,150.0	0.00	0.00	3,149.5	0.0	-30.0	6.6	0.00	0.00	0.00
3,175.0	0.00	0.00	3,174.5	0.0	-30.0	6.6	0.00	0.00	0.00
3,200.0	0.00	0.00	3,199.5	0.0	-30.0	6.6	0.00	0.00	0.00
3,225.0	0.00	0.00	3,224.5	0.0	-30.0	6.6	0.00	0.00	0.00
3,250.0	0.00	0.00	3,249.5	0.0	-30.0	6.6	0.00	0.00	0.00
3,275.0	0.00	0.00	3,274.5	0.0	-30.0	6.6	0.00	0.00	0.00
3,300.0	0.00	0.00	3,299.5	0.0	-30.0	6.6	0.00	0.00	0.00
3,325.0	0.00	0.00	3,324.5	0.0	-30.0	6.6	0.00	0.00	0.00
3,350.0	0.00	0.00	3,349.5	0.0	-30.0	6.6	0.00	0.00	0.00
3,375.0	0.00	0.00	3,374.5	0.0	-30.0	6.6	0.00	0.00	0.00
3,400.0	0.00	0.00	3,399.5	0.0	-30.0	6.6	0.00	0.00	0.00

SandRidge Energy

Survey Report

Company:	SandRidge Energy	Local Co-ordinate Reference:	Well Hebron 0780 4-18H
Project:	North Park Basin	TVD Reference:	WELL @ 8172.0usft (Original Well Elev)
Site:	T7N-R80W-S17	MD Reference:	WELL @ 8172.0usft (Original Well Elev)
Well:	Hebron 0780 4-18H	North Reference:	Grid
Wellbore:	Wellbore #1	Survey Calculation Method:	Minimum Curvature
Design:	Design #1	Database:	EDMProd

Planned Survey

Measured Depth (usft)	Inclination (°)	Azimuth (°)	Vertical Depth (usft)	+N/-S (usft)	+E/-W (usft)	Vertical Section (usft)	Dogleg Rate (°/100usft)	Build Rate (°/100usft)	Turn Rate (°/100usft)
3,425.0	0.00	0.00	3,424.5	0.0	-30.0	6.6	0.00	0.00	0.00
3,450.0	0.00	0.00	3,449.5	0.0	-30.0	6.6	0.00	0.00	0.00
3,475.0	0.00	0.00	3,474.5	0.0	-30.0	6.6	0.00	0.00	0.00
3,500.0	0.00	0.00	3,499.5	0.0	-30.0	6.6	0.00	0.00	0.00
3,525.0	0.00	0.00	3,524.5	0.0	-30.0	6.6	0.00	0.00	0.00
3,550.0	0.00	0.00	3,549.5	0.0	-30.0	6.6	0.00	0.00	0.00
3,575.0	0.00	0.00	3,574.5	0.0	-30.0	6.6	0.00	0.00	0.00
3,600.0	0.00	0.00	3,599.5	0.0	-30.0	6.6	0.00	0.00	0.00
3,625.0	0.00	0.00	3,624.5	0.0	-30.0	6.6	0.00	0.00	0.00
3,650.0	0.00	0.00	3,649.5	0.0	-30.0	6.6	0.00	0.00	0.00
3,675.0	0.00	0.00	3,674.5	0.0	-30.0	6.6	0.00	0.00	0.00
3,700.0	0.00	0.00	3,699.5	0.0	-30.0	6.6	0.00	0.00	0.00
3,725.0	0.00	0.00	3,724.5	0.0	-30.0	6.6	0.00	0.00	0.00
3,750.0	0.00	0.00	3,749.5	0.0	-30.0	6.6	0.00	0.00	0.00
3,775.0	0.00	0.00	3,774.5	0.0	-30.0	6.6	0.00	0.00	0.00
3,800.0	0.00	0.00	3,799.5	0.0	-30.0	6.6	0.00	0.00	0.00
3,825.0	0.00	0.00	3,824.5	0.0	-30.0	6.6	0.00	0.00	0.00
3,850.0	0.00	0.00	3,849.5	0.0	-30.0	6.6	0.00	0.00	0.00
3,875.0	0.00	0.00	3,874.5	0.0	-30.0	6.6	0.00	0.00	0.00
3,900.0	0.00	0.00	3,899.5	0.0	-30.0	6.6	0.00	0.00	0.00
3,925.0	0.00	0.00	3,924.5	0.0	-30.0	6.6	0.00	0.00	0.00
3,950.0	0.00	0.00	3,949.5	0.0	-30.0	6.6	0.00	0.00	0.00
3,975.0	0.00	0.00	3,974.5	0.0	-30.0	6.6	0.00	0.00	0.00
4,000.0	0.00	0.00	3,999.5	0.0	-30.0	6.6	0.00	0.00	0.00
4,025.0	0.00	0.00	4,024.5	0.0	-30.0	6.6	0.00	0.00	0.00
4,050.0	0.00	0.00	4,049.5	0.0	-30.0	6.6	0.00	0.00	0.00
4,075.0	0.00	0.00	4,074.5	0.0	-30.0	6.6	0.00	0.00	0.00
4,100.0	0.00	0.00	4,099.5	0.0	-30.0	6.6	0.00	0.00	0.00
4,125.0	0.00	0.00	4,124.5	0.0	-30.0	6.6	0.00	0.00	0.00
4,150.0	0.00	0.00	4,149.5	0.0	-30.0	6.6	0.00	0.00	0.00
4,175.0	0.00	0.00	4,174.5	0.0	-30.0	6.6	0.00	0.00	0.00
4,200.0	0.00	0.00	4,199.5	0.0	-30.0	6.6	0.00	0.00	0.00
4,225.0	0.00	0.00	4,224.5	0.0	-30.0	6.6	0.00	0.00	0.00
4,250.0	0.00	0.00	4,249.5	0.0	-30.0	6.6	0.00	0.00	0.00
4,275.0	0.00	0.00	4,274.5	0.0	-30.0	6.6	0.00	0.00	0.00
4,300.0	0.00	0.00	4,299.5	0.0	-30.0	6.6	0.00	0.00	0.00
4,325.0	0.00	0.00	4,324.5	0.0	-30.0	6.6	0.00	0.00	0.00
4,350.0	0.00	0.00	4,349.5	0.0	-30.0	6.6	0.00	0.00	0.00
4,375.0	0.00	0.00	4,374.5	0.0	-30.0	6.6	0.00	0.00	0.00
4,400.0	0.00	0.00	4,399.5	0.0	-30.0	6.6	0.00	0.00	0.00
4,425.0	0.00	0.00	4,424.5	0.0	-30.0	6.6	0.00	0.00	0.00
4,450.0	0.50	270.00	4,449.5	0.0	-30.1	6.6	2.00	2.00	0.00
4,475.0	1.00	270.00	4,474.5	0.0	-30.4	6.7	2.00	2.00	0.00
4,500.0	1.50	270.00	4,499.5	0.0	-31.0	6.8	2.00	2.00	0.00

SandRidge Energy

Survey Report

Company:	SandRidge Energy	Local Co-ordinate Reference:	Well Hebron 0780 4-18H
Project:	North Park Basin	TVD Reference:	WELL @ 8172.0usft (Original Well Elev)
Site:	T7N-R80W-S17	MD Reference:	WELL @ 8172.0usft (Original Well Elev)
Well:	Hebron 0780 4-18H	North Reference:	Grid
Wellbore:	Wellbore #1	Survey Calculation Method:	Minimum Curvature
Design:	Design #1	Database:	EDMProd

Planned Survey

Measured Depth (usft)	Inclination (°)	Azimuth (°)	Vertical Depth (usft)	+N/-S (usft)	+E/-W (usft)	Vertical Section (usft)	Dogleg Rate (°/100usft)	Build Rate (°/100usft)	Turn Rate (°/100usft)
4,525.0	2.00	270.00	4,524.5	0.0	-31.7	7.0	2.00	2.00	0.00
4,550.0	2.50	270.00	4,549.5	0.0	-32.7	7.2	2.00	2.00	0.00
4,575.0	3.00	270.00	4,574.5	0.0	-33.9	7.5	2.00	2.00	0.00
4,600.0	3.50	270.00	4,599.4	0.0	-35.3	7.8	2.00	2.00	0.00
4,625.0	4.00	270.00	4,624.4	0.0	-37.0	8.1	2.00	2.00	0.00
4,650.0	4.50	270.00	4,649.3	0.0	-38.8	8.5	2.00	2.00	0.00
4,675.0	5.00	270.00	4,674.2	0.0	-40.9	9.0	2.00	2.00	0.00
4,700.0	5.50	270.00	4,699.1	0.0	-43.2	9.5	2.00	2.00	0.00
4,725.0	6.00	270.00	4,724.0	0.0	-45.7	10.0	2.00	2.00	0.00
4,750.0	6.50	270.00	4,748.8	0.0	-48.4	10.6	2.00	2.00	0.00
4,775.0	7.00	270.00	4,773.7	0.0	-51.4	11.3	2.00	2.00	0.00
4,800.0	7.50	270.00	4,798.5	0.0	-54.5	12.0	2.00	2.00	0.00
4,825.0	8.00	270.00	4,823.2	0.0	-57.9	12.7	2.00	2.00	0.00
4,850.0	8.50	270.00	4,848.0	0.0	-61.5	13.5	2.00	2.00	0.00
4,875.0	9.00	270.00	4,872.7	0.0	-65.3	14.3	2.00	2.00	0.00
4,900.0	9.50	270.00	4,897.3	0.0	-69.3	15.2	2.00	2.00	0.00
4,925.0	10.00	270.00	4,922.0	0.0	-73.5	16.2	2.00	2.00	0.00
4,950.0	10.50	270.00	4,946.6	0.0	-78.0	17.1	2.00	2.00	0.00
4,975.0	11.00	270.00	4,971.1	0.0	-82.6	18.2	2.00	2.00	0.00
5,000.0	11.50	270.00	4,995.7	0.0	-87.5	19.2	2.00	2.00	0.00
5,025.0	12.00	270.00	5,020.1	0.0	-92.6	20.3	2.00	2.00	0.00
5,050.0	12.50	270.00	5,044.6	0.0	-97.9	21.5	2.00	2.00	0.00
5,075.0	13.00	270.00	5,069.0	0.0	-103.4	22.7	2.00	2.00	0.00
5,100.0	13.50	270.00	5,093.3	0.0	-109.2	24.0	2.00	2.00	0.00
5,125.0	14.00	270.00	5,117.6	0.0	-115.1	25.3	2.00	2.00	0.00
5,150.0	14.50	270.00	5,141.8	0.0	-121.3	26.6	2.00	2.00	0.00
5,175.0	15.00	270.00	5,166.0	0.0	-127.6	28.0	2.00	2.00	0.00
5,200.0	15.50	270.00	5,190.1	0.0	-134.2	29.5	2.00	2.00	0.00
5,225.0	16.00	270.00	5,214.2	0.0	-141.0	31.0	2.00	2.00	0.00
5,250.0	16.50	270.00	5,238.2	0.0	-148.0	32.5	2.00	2.00	0.00
5,275.0	17.00	270.00	5,262.1	0.0	-155.2	34.1	2.00	2.00	0.00
5,300.0	17.50	270.00	5,286.0	0.0	-162.6	35.7	2.00	2.00	0.00
5,325.0	18.00	270.00	5,309.8	0.0	-170.2	37.4	2.00	2.00	0.00
5,350.0	18.50	270.00	5,333.5	0.0	-178.0	39.1	2.00	2.00	0.00
5,375.0	19.00	270.00	5,357.2	0.0	-186.1	40.9	2.00	2.00	0.00
5,400.0	19.50	270.00	5,380.8	0.0	-194.3	42.7	2.00	2.00	0.00
5,404.0	19.58	270.00	5,384.6	0.0	-195.7	43.0	2.00	2.00	0.00
5,425.0	19.58	270.00	5,404.4	0.0	-202.7	44.5	0.00	0.00	0.00
5,450.0	19.58	270.00	5,427.9	0.0	-211.1	46.4	0.00	0.00	0.00
5,475.0	19.58	270.00	5,451.5	0.0	-219.5	48.2	0.00	0.00	0.00
5,500.0	19.58	270.00	5,475.0	0.0	-227.8	50.1	0.00	0.00	0.00
5,525.0	19.58	270.00	5,498.6	0.0	-236.2	51.9	0.00	0.00	0.00
5,550.0	19.58	270.00	5,522.1	0.0	-244.6	53.7	0.00	0.00	0.00

SandRidge Energy

Survey Report

Company:	SandRidge Energy	Local Co-ordinate Reference:	Well Hebron 0780 4-18H
Project:	North Park Basin	TVD Reference:	WELL @ 8172.0usft (Original Well Elev)
Site:	T7N-R80W-S17	MD Reference:	WELL @ 8172.0usft (Original Well Elev)
Well:	Hebron 0780 4-18H	North Reference:	Grid
Wellbore:	Wellbore #1	Survey Calculation Method:	Minimum Curvature
Design:	Design #1	Database:	EDMProd

Planned Survey

Measured Depth (usft)	Inclination (°)	Azimuth (°)	Vertical Depth (usft)	+N/-S (usft)	+E/-W (usft)	Vertical Section (usft)	Dogleg Rate (°/100usft)	Build Rate (°/100usft)	Turn Rate (°/100usft)
5,575.0	19.58	270.00	5,545.7	0.0	-253.0	55.6	0.00	0.00	0.00
5,600.0	19.58	270.00	5,569.2	0.0	-261.3	57.4	0.00	0.00	0.00
5,625.0	19.58	270.00	5,592.8	0.0	-269.7	59.3	0.00	0.00	0.00
5,650.0	19.58	270.00	5,616.3	0.0	-278.1	61.1	0.00	0.00	0.00
5,675.0	19.58	270.00	5,639.9	0.0	-286.5	62.9	0.00	0.00	0.00
5,700.0	19.58	270.00	5,663.5	0.0	-294.9	64.8	0.00	0.00	0.00
5,725.0	19.58	270.00	5,687.0	0.0	-303.2	66.6	0.00	0.00	0.00
5,750.0	19.58	270.00	5,710.6	0.0	-311.6	68.5	0.00	0.00	0.00
5,775.0	19.58	270.00	5,734.1	0.0	-320.0	70.3	0.00	0.00	0.00
5,800.0	19.58	270.00	5,757.7	0.0	-328.4	72.2	0.00	0.00	0.00
5,825.0	19.58	270.00	5,781.2	0.0	-336.8	74.0	0.00	0.00	0.00
5,850.0	19.58	270.00	5,804.8	0.0	-345.1	75.8	0.00	0.00	0.00
5,875.0	19.58	270.00	5,828.3	0.0	-353.5	77.7	0.00	0.00	0.00
5,900.0	19.58	270.00	5,851.9	0.0	-361.9	79.5	0.00	0.00	0.00
5,925.0	19.58	270.00	5,875.4	0.0	-370.3	81.4	0.00	0.00	0.00
5,950.0	19.58	270.00	5,899.0	0.0	-378.6	83.2	0.00	0.00	0.00
5,975.0	19.58	270.00	5,922.6	0.0	-387.0	85.0	0.00	0.00	0.00
6,000.0	19.58	270.00	5,946.1	0.0	-395.4	86.9	0.00	0.00	0.00
6,025.0	19.58	270.00	5,969.7	0.0	-403.8	88.7	0.00	0.00	0.00
6,050.0	19.58	270.00	5,993.2	0.0	-412.2	90.6	0.00	0.00	0.00
6,075.0	19.58	270.00	6,016.8	0.0	-420.5	92.4	0.00	0.00	0.00
6,100.0	19.58	270.00	6,040.3	0.0	-428.9	94.2	0.00	0.00	0.00
6,125.0	19.58	270.00	6,063.9	0.0	-437.3	96.1	0.00	0.00	0.00
6,150.0	19.58	270.00	6,087.4	0.0	-445.7	97.9	0.00	0.00	0.00
6,175.0	19.58	270.00	6,111.0	0.0	-454.0	99.8	0.00	0.00	0.00
6,200.0	19.58	270.00	6,134.5	0.0	-462.4	101.6	0.00	0.00	0.00
6,225.0	19.58	270.00	6,158.1	0.0	-470.8	103.5	0.00	0.00	0.00
6,250.0	19.58	270.00	6,181.7	0.0	-479.2	105.3	0.00	0.00	0.00
6,275.0	19.58	270.00	6,205.2	0.0	-487.6	107.1	0.00	0.00	0.00
6,300.0	19.58	270.00	6,228.8	0.0	-495.9	109.0	0.00	0.00	0.00
6,325.0	19.58	270.00	6,252.3	0.0	-504.3	110.8	0.00	0.00	0.00
6,350.0	19.58	270.00	6,275.9	0.0	-512.7	112.7	0.00	0.00	0.00
6,375.0	19.58	270.00	6,299.4	0.0	-521.1	114.5	0.00	0.00	0.00
6,400.0	19.58	270.00	6,323.0	0.0	-529.5	116.3	0.00	0.00	0.00
6,425.0	19.58	270.00	6,346.5	0.0	-537.8	118.2	0.00	0.00	0.00
6,450.0	19.58	270.00	6,370.1	0.0	-546.2	120.0	0.00	0.00	0.00
6,475.0	19.58	270.00	6,393.6	0.0	-554.6	121.9	0.00	0.00	0.00
6,500.0	19.58	270.00	6,417.2	0.0	-563.0	123.7	0.00	0.00	0.00
6,525.0	19.58	270.00	6,440.7	0.0	-571.3	125.5	0.00	0.00	0.00
6,550.0	19.58	270.00	6,464.3	0.0	-579.7	127.4	0.00	0.00	0.00
6,575.0	19.58	270.00	6,487.9	0.0	-588.1	129.2	0.00	0.00	0.00
6,600.0	19.58	270.00	6,511.4	0.0	-596.5	131.1	0.00	0.00	0.00
6,610.5	19.58	270.00	6,521.3	0.0	-600.0	131.8	0.00	0.00	0.00

SandRidge Energy

Survey Report

Company:	SandRidge Energy	Local Co-ordinate Reference:	Well Hebron 0780 4-18H
Project:	North Park Basin	TVD Reference:	WELL @ 8172.0usft (Original Well Elev)
Site:	T7N-R80W-S17	MD Reference:	WELL @ 8172.0usft (Original Well Elev)
Well:	Hebron 0780 4-18H	North Reference:	Grid
Wellbore:	Wellbore #1	Survey Calculation Method:	Minimum Curvature
Design:	Design #1	Database:	EDMProd

Planned Survey

Measured Depth (usft)	Inclination (°)	Azimuth (°)	Vertical Depth (usft)	+N/-S (usft)	+E/-W (usft)	Vertical Section (usft)	Dogleg Rate (°/100usft)	Build Rate (°/100usft)	Turn Rate (°/100usft)
6,625.0	20.38	266.46	6,534.9	-0.2	-605.0	133.1	10.00	5.53	-24.39
6,650.0	21.92	260.98	6,558.2	-1.2	-613.9	136.0	10.00	6.13	-21.92
6,675.0	23.61	256.22	6,581.3	-3.1	-623.4	140.0	10.00	6.76	-19.06
6,700.0	25.42	252.08	6,604.0	-5.9	-633.3	144.9	10.00	7.27	-16.56
6,725.0	27.34	248.47	6,626.4	-9.7	-643.8	150.9	10.00	7.67	-14.44
6,750.0	29.34	245.31	6,648.4	-14.4	-654.7	157.9	10.00	8.00	-12.65
6,775.0	31.41	242.52	6,670.0	-19.9	-666.0	165.8	10.00	8.26	-11.14
6,800.0	33.53	240.05	6,691.1	-26.4	-677.8	174.7	10.00	8.48	-9.89
6,825.0	35.69	237.84	6,711.7	-33.7	-690.0	184.5	10.00	8.65	-8.83
6,850.0	37.89	235.86	6,731.7	-41.9	-702.5	195.2	10.00	8.80	-7.94
6,875.0	40.12	234.06	6,751.1	-50.9	-715.4	206.9	10.00	8.92	-7.19
6,900.0	42.37	232.42	6,769.9	-60.8	-728.6	219.4	10.00	9.02	-6.55
6,925.0	44.65	230.92	6,788.1	-71.5	-742.1	232.8	10.00	9.11	-6.01
6,950.0	46.95	229.53	6,805.5	-82.9	-755.8	247.0	10.00	9.18	-5.54
6,975.0	49.26	228.25	6,822.2	-95.2	-769.9	262.0	10.00	9.24	-5.14
7,000.0	51.58	227.05	6,838.1	-108.2	-784.1	277.8	10.00	9.29	-4.79
7,025.0	53.91	225.93	6,853.2	-121.9	-798.5	294.3	10.00	9.34	-4.49
7,050.0	56.26	224.87	6,867.6	-136.3	-813.1	311.6	10.00	9.38	-4.23
7,075.0	58.61	223.87	6,881.0	-151.3	-827.8	329.5	10.00	9.41	-4.01
7,089.7	60.00	223.30	6,888.5	-160.5	-836.6	340.4	10.00	9.44	-3.85
7,100.0	60.00	223.30	6,893.7	-167.0	-842.7	348.0	0.00	0.00	0.00
7,125.0	60.00	223.30	6,906.2	-182.7	-857.5	366.7	0.00	0.00	0.00
7,150.0	60.00	223.30	6,918.7	-198.5	-872.4	385.3	0.00	0.00	0.00
7,175.0	60.00	223.30	6,931.2	-214.2	-887.2	404.0	0.00	0.00	0.00
7,200.0	60.00	223.30	6,943.7	-230.0	-902.1	422.6	0.00	0.00	0.00
7,225.0	60.00	223.30	6,956.2	-245.7	-916.9	441.2	0.00	0.00	0.00
7,239.7	60.00	223.30	6,963.5	-255.0	-925.7	452.2	0.00	0.00	0.00
7,250.0	60.49	222.26	6,968.6	-261.6	-931.7	459.9	10.00	4.73	-10.15
7,275.0	61.70	219.76	6,980.7	-278.1	-946.1	479.2	10.00	4.86	-9.98
7,300.0	62.96	217.32	6,992.3	-295.4	-959.9	499.1	10.00	5.04	-9.75
7,325.0	64.26	214.94	7,003.4	-313.5	-973.1	519.6	10.00	5.20	-9.54
7,350.0	65.60	212.61	7,014.0	-332.3	-985.7	540.8	10.00	5.35	-9.33
7,375.0	66.97	210.32	7,024.1	-351.8	-997.6	562.4	10.00	5.49	-9.13
7,400.0	68.38	208.09	7,033.6	-372.0	-1,008.9	584.6	10.00	5.62	-8.94
7,425.0	69.81	205.90	7,042.5	-392.8	-1,019.5	607.2	10.00	5.74	-8.77
7,450.0	71.27	203.75	7,050.8	-414.2	-1,029.4	630.3	10.00	5.84	-8.61
7,475.0	72.76	201.63	7,058.6	-436.2	-1,038.5	653.7	10.00	5.94	-8.46
7,500.0	74.26	199.55	7,065.6	-458.6	-1,047.0	677.4	10.00	6.03	-8.32
7,525.0	75.79	197.50	7,072.1	-481.5	-1,054.6	701.5	10.00	6.11	-8.20
7,550.0	77.33	195.48	7,077.9	-504.8	-1,061.5	725.7	10.00	6.17	-8.09
7,575.0	78.89	193.48	7,083.1	-528.5	-1,067.7	750.2	10.00	6.23	-7.99
7,600.0	80.47	191.51	7,087.5	-552.5	-1,073.0	774.8	10.00	6.29	-7.90
7,625.0	82.05	189.55	7,091.3	-576.8	-1,077.5	799.5	10.00	6.33	-7.83
7,650.0	83.64	187.61	7,094.5	-601.3	-1,081.2	824.2	10.00	6.37	-7.77

SandRidge Energy

Survey Report

Company:	SandRidge Energy	Local Co-ordinate Reference:	Well Hebron 0780 4-18H
Project:	North Park Basin	TVD Reference:	WELL @ 8172.0usft (Original Well Elev)
Site:	T7N-R80W-S17	MD Reference:	WELL @ 8172.0usft (Original Well Elev)
Well:	Hebron 0780 4-18H	North Reference:	Grid
Wellbore:	Wellbore #1	Survey Calculation Method:	Minimum Curvature
Design:	Design #1	Database:	EDMProd

Planned Survey

Measured Depth (usft)	Inclination (°)	Azimuth (°)	Vertical Depth (usft)	+N/-S (usft)	+E/-W (usft)	Vertical Section (usft)	Dogleg Rate (°/100usft)	Build Rate (°/100usft)	Turn Rate (°/100usft)
7,675.0	85.24	185.67	7,096.9	-626.0	-1,084.1	848.9	10.00	6.40	-7.72
7,700.0	86.84	183.75	7,098.6	-650.9	-1,086.1	873.6	10.00	6.42	-7.69
7,725.0	88.45	181.84	7,099.6	-675.8	-1,087.3	898.2	10.00	6.43	-7.66
7,749.0	90.00	180.00	7,100.0	-699.9	-1,087.7	921.8	10.00	6.44	-7.65
7,750.0	90.00	180.00	7,100.0	-700.8	-1,087.7	922.7	0.00	0.00	0.00
7,775.0	90.00	180.00	7,100.0	-725.8	-1,087.7	947.1	0.00	0.00	0.00
7,800.0	90.00	180.00	7,100.0	-750.8	-1,087.7	971.5	0.00	0.00	0.00
7,825.0	90.00	180.00	7,100.0	-775.8	-1,087.7	995.9	0.00	0.00	0.00
7,850.0	90.00	180.00	7,100.0	-800.8	-1,087.7	1,020.3	0.00	0.00	0.00
7,875.0	90.00	180.00	7,100.0	-825.8	-1,087.7	1,044.7	0.00	0.00	0.00
7,900.0	90.00	180.00	7,100.0	-850.8	-1,087.7	1,069.0	0.00	0.00	0.00
7,925.0	90.00	180.00	7,100.0	-875.8	-1,087.7	1,093.4	0.00	0.00	0.00
7,950.0	90.00	180.00	7,100.0	-900.8	-1,087.7	1,117.8	0.00	0.00	0.00
7,975.0	90.00	180.00	7,100.0	-925.8	-1,087.7	1,142.2	0.00	0.00	0.00
8,000.0	90.00	180.00	7,100.0	-950.8	-1,087.7	1,166.6	0.00	0.00	0.00
8,025.0	90.00	180.00	7,100.0	-975.8	-1,087.7	1,191.0	0.00	0.00	0.00
8,050.0	90.00	180.00	7,100.0	-1,000.8	-1,087.7	1,215.4	0.00	0.00	0.00
8,075.0	90.00	180.00	7,100.0	-1,025.8	-1,087.7	1,239.8	0.00	0.00	0.00
8,100.0	90.00	180.00	7,100.0	-1,050.8	-1,087.7	1,264.2	0.00	0.00	0.00
8,125.0	90.00	180.00	7,100.0	-1,075.8	-1,087.7	1,288.5	0.00	0.00	0.00
8,150.0	90.00	180.00	7,100.0	-1,100.8	-1,087.7	1,312.9	0.00	0.00	0.00
8,175.0	90.00	180.00	7,100.0	-1,125.8	-1,087.7	1,337.3	0.00	0.00	0.00
8,200.0	90.00	180.00	7,100.0	-1,150.8	-1,087.7	1,361.7	0.00	0.00	0.00
8,225.0	90.00	180.00	7,100.0	-1,175.8	-1,087.7	1,386.1	0.00	0.00	0.00
8,250.0	90.00	180.00	7,100.0	-1,200.8	-1,087.7	1,410.5	0.00	0.00	0.00
8,275.0	90.00	180.00	7,100.0	-1,225.8	-1,087.7	1,434.9	0.00	0.00	0.00
8,300.0	90.00	180.00	7,100.0	-1,250.8	-1,087.7	1,459.3	0.00	0.00	0.00
8,325.0	90.00	180.00	7,100.0	-1,275.8	-1,087.7	1,483.7	0.00	0.00	0.00
8,350.0	90.00	180.00	7,100.0	-1,300.8	-1,087.7	1,508.0	0.00	0.00	0.00
8,375.0	90.00	180.00	7,100.0	-1,325.8	-1,087.7	1,532.4	0.00	0.00	0.00
8,400.0	90.00	180.00	7,100.0	-1,350.8	-1,087.7	1,556.8	0.00	0.00	0.00
8,425.0	90.00	180.00	7,100.0	-1,375.8	-1,087.7	1,581.2	0.00	0.00	0.00
8,450.0	90.00	180.00	7,100.0	-1,400.8	-1,087.7	1,605.6	0.00	0.00	0.00
8,475.0	90.00	180.00	7,100.0	-1,425.8	-1,087.7	1,630.0	0.00	0.00	0.00
8,500.0	90.00	180.00	7,100.0	-1,450.8	-1,087.7	1,654.4	0.00	0.00	0.00
8,525.0	90.00	180.00	7,100.0	-1,475.8	-1,087.7	1,678.8	0.00	0.00	0.00
8,550.0	90.00	180.00	7,100.0	-1,500.8	-1,087.7	1,703.2	0.00	0.00	0.00
8,575.0	90.00	180.00	7,100.0	-1,525.8	-1,087.7	1,727.5	0.00	0.00	0.00
8,600.0	90.00	180.00	7,100.0	-1,550.8	-1,087.7	1,751.9	0.00	0.00	0.00
8,625.0	90.00	180.00	7,100.0	-1,575.8	-1,087.7	1,776.3	0.00	0.00	0.00
8,650.0	90.00	180.00	7,100.0	-1,600.8	-1,087.7	1,800.7	0.00	0.00	0.00
8,675.0	90.00	180.00	7,100.0	-1,625.8	-1,087.7	1,825.1	0.00	0.00	0.00
8,700.0	90.00	180.00	7,100.0	-1,650.8	-1,087.7	1,849.5	0.00	0.00	0.00

SandRidge Energy

Survey Report

Company:	SandRidge Energy	Local Co-ordinate Reference:	Well Hebron 0780 4-18H
Project:	North Park Basin	TVD Reference:	WELL @ 8172.0usft (Original Well Elev)
Site:	T7N-R80W-S17	MD Reference:	WELL @ 8172.0usft (Original Well Elev)
Well:	Hebron 0780 4-18H	North Reference:	Grid
Wellbore:	Wellbore #1	Survey Calculation Method:	Minimum Curvature
Design:	Design #1	Database:	EDMProd

Planned Survey

Measured Depth (usft)	Inclination (°)	Azimuth (°)	Vertical Depth (usft)	+N/-S (usft)	+E/-W (usft)	Vertical Section (usft)	Dogleg Rate (°/100usft)	Build Rate (°/100usft)	Turn Rate (°/100usft)
8,725.0	90.00	180.00	7,100.0	-1,675.8	-1,087.7	1,873.9	0.00	0.00	0.00
8,750.0	90.00	180.00	7,100.0	-1,700.8	-1,087.7	1,898.3	0.00	0.00	0.00
8,775.0	90.00	180.00	7,100.0	-1,725.8	-1,087.6	1,922.6	0.00	0.00	0.00
8,800.0	90.00	180.00	7,100.0	-1,750.8	-1,087.6	1,947.0	0.00	0.00	0.00
8,825.0	90.00	180.00	7,100.0	-1,775.8	-1,087.6	1,971.4	0.00	0.00	0.00
8,850.0	90.00	180.00	7,100.0	-1,800.8	-1,087.6	1,995.8	0.00	0.00	0.00
8,875.0	90.00	180.00	7,100.0	-1,825.8	-1,087.6	2,020.2	0.00	0.00	0.00
8,900.0	90.00	180.00	7,100.0	-1,850.8	-1,087.6	2,044.6	0.00	0.00	0.00
8,925.0	90.00	180.00	7,100.0	-1,875.8	-1,087.6	2,069.0	0.00	0.00	0.00
8,950.0	90.00	180.00	7,100.0	-1,900.8	-1,087.6	2,093.4	0.00	0.00	0.00
8,975.0	90.00	180.00	7,100.0	-1,925.8	-1,087.6	2,117.8	0.00	0.00	0.00
9,000.0	90.00	180.00	7,100.0	-1,950.8	-1,087.6	2,142.1	0.00	0.00	0.00
9,025.0	90.00	180.00	7,100.0	-1,975.8	-1,087.6	2,166.5	0.00	0.00	0.00
9,050.0	90.00	180.00	7,100.0	-2,000.8	-1,087.6	2,190.9	0.00	0.00	0.00
9,075.0	90.00	180.00	7,100.0	-2,025.8	-1,087.6	2,215.3	0.00	0.00	0.00
9,100.0	90.00	180.00	7,100.0	-2,050.8	-1,087.6	2,239.7	0.00	0.00	0.00
9,125.0	90.00	180.00	7,100.0	-2,075.8	-1,087.6	2,264.1	0.00	0.00	0.00
9,150.0	90.00	180.00	7,100.0	-2,100.8	-1,087.6	2,288.5	0.00	0.00	0.00
9,175.0	90.00	180.00	7,100.0	-2,125.8	-1,087.6	2,312.9	0.00	0.00	0.00
9,200.0	90.00	180.00	7,100.0	-2,150.8	-1,087.6	2,337.3	0.00	0.00	0.00
9,225.0	90.00	180.00	7,100.0	-2,175.8	-1,087.6	2,361.6	0.00	0.00	0.00
9,250.0	90.00	180.00	7,100.0	-2,200.8	-1,087.6	2,386.0	0.00	0.00	0.00
9,275.0	90.00	180.00	7,100.0	-2,225.8	-1,087.6	2,410.4	0.00	0.00	0.00
9,300.0	90.00	180.00	7,100.0	-2,250.8	-1,087.6	2,434.8	0.00	0.00	0.00
9,325.0	90.00	180.00	7,100.0	-2,275.8	-1,087.6	2,459.2	0.00	0.00	0.00
9,350.0	90.00	180.00	7,100.0	-2,300.8	-1,087.6	2,483.6	0.00	0.00	0.00
9,375.0	90.00	180.00	7,100.0	-2,325.8	-1,087.6	2,508.0	0.00	0.00	0.00
9,400.0	90.00	180.00	7,100.0	-2,350.8	-1,087.6	2,532.4	0.00	0.00	0.00
9,425.0	90.00	180.00	7,100.0	-2,375.8	-1,087.6	2,556.8	0.00	0.00	0.00
9,450.0	90.00	180.00	7,100.0	-2,400.8	-1,087.6	2,581.1	0.00	0.00	0.00
9,475.0	90.00	180.00	7,100.0	-2,425.8	-1,087.6	2,605.5	0.00	0.00	0.00
9,500.0	90.00	180.00	7,100.0	-2,450.8	-1,087.6	2,629.9	0.00	0.00	0.00
9,525.0	90.00	180.00	7,100.0	-2,475.8	-1,087.6	2,654.3	0.00	0.00	0.00
9,550.0	90.00	180.00	7,100.0	-2,500.8	-1,087.6	2,678.7	0.00	0.00	0.00
9,575.0	90.00	180.00	7,100.0	-2,525.8	-1,087.6	2,703.1	0.00	0.00	0.00
9,600.0	90.00	180.00	7,100.0	-2,550.8	-1,087.6	2,727.5	0.00	0.00	0.00
9,625.0	90.00	180.00	7,100.0	-2,575.8	-1,087.6	2,751.9	0.00	0.00	0.00
9,650.0	90.00	180.00	7,100.0	-2,600.8	-1,087.6	2,776.3	0.00	0.00	0.00
9,675.0	90.00	180.00	7,100.0	-2,625.8	-1,087.6	2,800.6	0.00	0.00	0.00
9,700.0	90.00	180.00	7,100.0	-2,650.8	-1,087.6	2,825.0	0.00	0.00	0.00
9,725.0	90.00	180.00	7,100.0	-2,675.8	-1,087.6	2,849.4	0.00	0.00	0.00
9,750.0	90.00	180.00	7,100.0	-2,700.8	-1,087.6	2,873.8	0.00	0.00	0.00
9,775.0	90.00	180.00	7,100.0	-2,725.8	-1,087.6	2,898.2	0.00	0.00	0.00

SandRidge Energy

Survey Report

Company:	SandRidge Energy	Local Co-ordinate Reference:	Well Hebron 0780 4-18H
Project:	North Park Basin	TVD Reference:	WELL @ 8172.0usft (Original Well Elev)
Site:	T7N-R80W-S17	MD Reference:	WELL @ 8172.0usft (Original Well Elev)
Well:	Hebron 0780 4-18H	North Reference:	Grid
Wellbore:	Wellbore #1	Survey Calculation Method:	Minimum Curvature
Design:	Design #1	Database:	EDMPProd

Planned Survey

Measured Depth (usft)	Inclination (°)	Azimuth (°)	Vertical Depth (usft)	+N/-S (usft)	+E/-W (usft)	Vertical Section (usft)	Dogleg Rate (°/100usft)	Build Rate (°/100usft)	Turn Rate (°/100usft)
9,800.0	90.00	180.00	7,100.0	-2,750.8	-1,087.6	2,922.6	0.00	0.00	0.00
9,825.0	90.00	180.00	7,100.0	-2,775.8	-1,087.6	2,947.0	0.00	0.00	0.00
9,850.0	90.00	180.00	7,100.0	-2,800.8	-1,087.6	2,971.4	0.00	0.00	0.00
9,875.0	90.00	180.00	7,100.0	-2,825.8	-1,087.6	2,995.8	0.00	0.00	0.00
9,900.0	90.00	180.00	7,100.0	-2,850.8	-1,087.6	3,020.1	0.00	0.00	0.00
9,925.0	90.00	180.00	7,100.0	-2,875.8	-1,087.6	3,044.5	0.00	0.00	0.00
9,950.0	90.00	180.00	7,100.0	-2,900.8	-1,087.6	3,068.9	0.00	0.00	0.00
9,975.0	90.00	180.00	7,100.0	-2,925.8	-1,087.6	3,093.3	0.00	0.00	0.00
10,000.0	90.00	180.00	7,100.0	-2,950.8	-1,087.6	3,117.7	0.00	0.00	0.00
10,025.0	90.00	180.00	7,100.0	-2,975.8	-1,087.6	3,142.1	0.00	0.00	0.00
10,050.0	90.00	180.00	7,100.0	-3,000.8	-1,087.6	3,166.5	0.00	0.00	0.00
10,075.0	90.00	180.00	7,100.0	-3,025.8	-1,087.6	3,190.9	0.00	0.00	0.00
10,100.0	90.00	180.00	7,100.0	-3,050.8	-1,087.6	3,215.2	0.00	0.00	0.00
10,125.0	90.00	180.00	7,100.0	-3,075.8	-1,087.6	3,239.6	0.00	0.00	0.00
10,150.0	90.00	180.00	7,100.0	-3,100.8	-1,087.6	3,264.0	0.00	0.00	0.00
10,175.0	90.00	180.00	7,100.0	-3,125.8	-1,087.6	3,288.4	0.00	0.00	0.00
10,200.0	90.00	180.00	7,100.0	-3,150.8	-1,087.6	3,312.8	0.00	0.00	0.00
10,225.0	90.00	180.00	7,100.0	-3,175.8	-1,087.6	3,337.2	0.00	0.00	0.00
10,250.0	90.00	180.00	7,100.0	-3,200.8	-1,087.6	3,361.6	0.00	0.00	0.00
10,275.0	90.00	180.00	7,100.0	-3,225.8	-1,087.6	3,386.0	0.00	0.00	0.00
10,300.0	90.00	180.00	7,100.0	-3,250.8	-1,087.6	3,410.4	0.00	0.00	0.00
10,325.0	90.00	180.00	7,100.0	-3,275.8	-1,087.5	3,434.7	0.00	0.00	0.00
10,350.0	90.00	180.00	7,100.0	-3,300.8	-1,087.5	3,459.1	0.00	0.00	0.00
10,375.0	90.00	180.00	7,100.0	-3,325.8	-1,087.5	3,483.5	0.00	0.00	0.00
10,400.0	90.00	180.00	7,100.0	-3,350.8	-1,087.5	3,507.9	0.00	0.00	0.00
10,425.0	90.00	180.00	7,100.0	-3,375.8	-1,087.5	3,532.3	0.00	0.00	0.00
10,450.0	90.00	180.00	7,100.0	-3,400.8	-1,087.5	3,556.7	0.00	0.00	0.00
10,475.0	90.00	180.00	7,100.0	-3,425.8	-1,087.5	3,581.1	0.00	0.00	0.00
10,500.0	90.00	180.00	7,100.0	-3,450.8	-1,087.5	3,605.5	0.00	0.00	0.00
10,525.0	90.00	180.00	7,100.0	-3,475.8	-1,087.5	3,629.9	0.00	0.00	0.00
10,550.0	90.00	180.00	7,100.0	-3,500.8	-1,087.5	3,654.2	0.00	0.00	0.00
10,575.0	90.00	180.00	7,100.0	-3,525.8	-1,087.5	3,678.6	0.00	0.00	0.00
10,600.0	90.00	180.00	7,100.0	-3,550.8	-1,087.5	3,703.0	0.00	0.00	0.00
10,625.0	90.00	180.00	7,100.0	-3,575.8	-1,087.5	3,727.4	0.00	0.00	0.00
10,650.0	90.00	180.00	7,100.0	-3,600.8	-1,087.5	3,751.8	0.00	0.00	0.00
10,675.0	90.00	180.00	7,100.0	-3,625.8	-1,087.5	3,776.2	0.00	0.00	0.00
10,700.0	90.00	180.00	7,100.0	-3,650.8	-1,087.5	3,800.6	0.00	0.00	0.00
10,725.0	90.00	180.00	7,100.0	-3,675.8	-1,087.5	3,825.0	0.00	0.00	0.00
10,750.0	90.00	180.00	7,100.0	-3,700.8	-1,087.5	3,849.4	0.00	0.00	0.00
10,775.0	90.00	180.00	7,100.0	-3,725.8	-1,087.5	3,873.7	0.00	0.00	0.00
10,800.0	90.00	180.00	7,100.0	-3,750.8	-1,087.5	3,898.1	0.00	0.00	0.00
10,825.0	90.00	180.00	7,100.0	-3,775.8	-1,087.5	3,922.5	0.00	0.00	0.00
10,850.0	90.00	180.00	7,100.0	-3,800.8	-1,087.5	3,946.9	0.00	0.00	0.00
10,875.0	90.00	180.00	7,100.0	-3,825.8	-1,087.5	3,971.3	0.00	0.00	0.00

SandRidge Energy

Survey Report

Company:	SandRidge Energy	Local Co-ordinate Reference:	Well Hebron 0780 4-18H
Project:	North Park Basin	TVD Reference:	WELL @ 8172.0usft (Original Well Elev)
Site:	T7N-R80W-S17	MD Reference:	WELL @ 8172.0usft (Original Well Elev)
Well:	Hebron 0780 4-18H	North Reference:	Grid
Wellbore:	Wellbore #1	Survey Calculation Method:	Minimum Curvature
Design:	Design #1	Database:	EDMProd

Planned Survey

Measured Depth (usft)	Inclination (°)	Azimuth (°)	Vertical Depth (usft)	+N/-S (usft)	+E/-W (usft)	Vertical Section (usft)	Dogleg Rate (°/100usft)	Build Rate (°/100usft)	Turn Rate (°/100usft)
10,900.0	90.00	180.00	7,100.0	-3,850.8	-1,087.5	3,995.7	0.00	0.00	0.00
10,925.0	90.00	180.00	7,100.0	-3,875.8	-1,087.5	4,020.1	0.00	0.00	0.00
10,950.0	90.00	180.00	7,100.0	-3,900.8	-1,087.5	4,044.5	0.00	0.00	0.00
10,975.0	90.00	180.00	7,100.0	-3,925.8	-1,087.5	4,068.9	0.00	0.00	0.00
11,000.0	90.00	180.00	7,100.0	-3,950.8	-1,087.5	4,093.2	0.00	0.00	0.00
11,025.0	90.00	180.00	7,100.0	-3,975.8	-1,087.5	4,117.6	0.00	0.00	0.00
11,050.0	90.00	180.00	7,100.0	-4,000.8	-1,087.5	4,142.0	0.00	0.00	0.00
11,075.0	90.00	180.00	7,100.0	-4,025.8	-1,087.5	4,166.4	0.00	0.00	0.00
11,100.0	90.00	180.00	7,100.0	-4,050.8	-1,087.5	4,190.8	0.00	0.00	0.00
11,125.0	90.00	180.00	7,100.0	-4,075.8	-1,087.5	4,215.2	0.00	0.00	0.00
11,150.0	90.00	180.00	7,100.0	-4,100.8	-1,087.5	4,239.6	0.00	0.00	0.00
11,175.0	90.00	180.00	7,100.0	-4,125.8	-1,087.5	4,264.0	0.00	0.00	0.00
11,200.0	90.00	180.00	7,100.0	-4,150.8	-1,087.5	4,288.3	0.00	0.00	0.00
11,225.0	90.00	180.00	7,100.0	-4,175.8	-1,087.5	4,312.7	0.00	0.00	0.00
11,250.0	90.00	180.00	7,100.0	-4,200.8	-1,087.5	4,337.1	0.00	0.00	0.00
11,275.0	90.00	180.00	7,100.0	-4,225.8	-1,087.5	4,361.5	0.00	0.00	0.00
11,300.0	90.00	180.00	7,100.0	-4,250.8	-1,087.5	4,385.9	0.00	0.00	0.00
11,325.0	90.00	180.00	7,100.0	-4,275.8	-1,087.5	4,410.3	0.00	0.00	0.00
11,350.0	90.00	180.00	7,100.0	-4,300.8	-1,087.5	4,434.7	0.00	0.00	0.00
11,375.0	90.00	180.00	7,100.0	-4,325.8	-1,087.5	4,459.1	0.00	0.00	0.00
11,400.0	90.00	180.00	7,100.0	-4,350.8	-1,087.5	4,483.5	0.00	0.00	0.00
11,425.0	90.00	180.00	7,100.0	-4,375.8	-1,087.5	4,507.8	0.00	0.00	0.00
11,450.0	90.00	180.00	7,100.0	-4,400.8	-1,087.5	4,532.2	0.00	0.00	0.00
11,475.0	90.00	180.00	7,100.0	-4,425.8	-1,087.5	4,556.6	0.00	0.00	0.00
11,500.0	90.00	180.00	7,100.0	-4,450.8	-1,087.5	4,581.0	0.00	0.00	0.00
11,525.0	90.00	180.00	7,100.0	-4,475.8	-1,087.5	4,605.4	0.00	0.00	0.00
11,550.0	90.00	180.00	7,100.0	-4,500.8	-1,087.5	4,629.8	0.00	0.00	0.00
11,575.0	90.00	180.00	7,100.0	-4,525.8	-1,087.5	4,654.2	0.00	0.00	0.00
11,600.0	90.00	180.00	7,100.0	-4,550.8	-1,087.5	4,678.6	0.00	0.00	0.00
11,625.0	90.00	180.00	7,100.0	-4,575.8	-1,087.5	4,703.0	0.00	0.00	0.00
11,650.0	90.00	180.00	7,100.0	-4,600.8	-1,087.5	4,727.3	0.00	0.00	0.00
11,675.0	90.00	180.00	7,100.0	-4,625.8	-1,087.5	4,751.7	0.00	0.00	0.00
11,700.0	90.00	180.00	7,100.0	-4,650.8	-1,087.5	4,776.1	0.00	0.00	0.00
11,725.0	90.00	180.00	7,100.0	-4,675.8	-1,087.5	4,800.5	0.00	0.00	0.00
11,750.0	90.00	180.00	7,100.0	-4,700.8	-1,087.5	4,824.9	0.00	0.00	0.00
11,775.0	90.00	180.00	7,100.0	-4,725.8	-1,087.5	4,849.3	0.00	0.00	0.00
11,800.0	90.00	180.00	7,100.0	-4,750.8	-1,087.5	4,873.7	0.00	0.00	0.00
11,825.0	90.00	180.00	7,100.0	-4,775.8	-1,087.5	4,898.1	0.00	0.00	0.00
11,850.0	90.00	180.00	7,100.0	-4,800.8	-1,087.5	4,922.5	0.00	0.00	0.00
11,875.0	90.00	180.00	7,100.0	-4,825.8	-1,087.5	4,946.8	0.00	0.00	0.00
11,877.2	90.00	180.00	7,100.0	-4,828.0	-1,087.4	4,949.0	0.00	0.00	0.00

SandRidge Energy

Survey Report

Company:	SandRidge Energy	Local Co-ordinate Reference:	Well Hebron 0780 4-18H
Project:	North Park Basin	TVD Reference:	WELL @ 8172.0usft (Original Well Elev)
Site:	T7N-R80W-S17	MD Reference:	WELL @ 8172.0usft (Original Well Elev)
Well:	Hebron 0780 4-18H	North Reference:	Grid
Wellbore:	Wellbore #1	Survey Calculation Method:	Minimum Curvature
Design:	Design #1	Database:	EDMProd

Design Targets									
Target Name									
- hit/miss target	Dip Angle	Dip Dir.	TVD	+N/-S	+E/-W	Northing	Easting	Latitude	Longitude
- Shape	(°)	(°)	(usft)	(usft)	(usft)	(usft)	(usft)		
Hebron 4-18H	0.00	360.00	7,100.0	-4,828.0	-1,087.4	1,452,135.24	2,747,663.46	40° 34' 15.466 N	106° 24' 29.983 W
- plan hits target center									
- Point									

Formations						
Measured Depth	Vertical Depth					
(usft)	(usft)	Name	Lithology	Dip	Dip Direction	
				(°)	(°)	
5,455.4	5,433.0	Shannon		0.00		
6,946.4	6,803.0	Niobrara		0.00		

Checked By: _____ Approved By: _____ Date: _____