

WELL LOCATION PLAT
T7N, R80W, 6th P.M.

SandRidge Exploration & Production

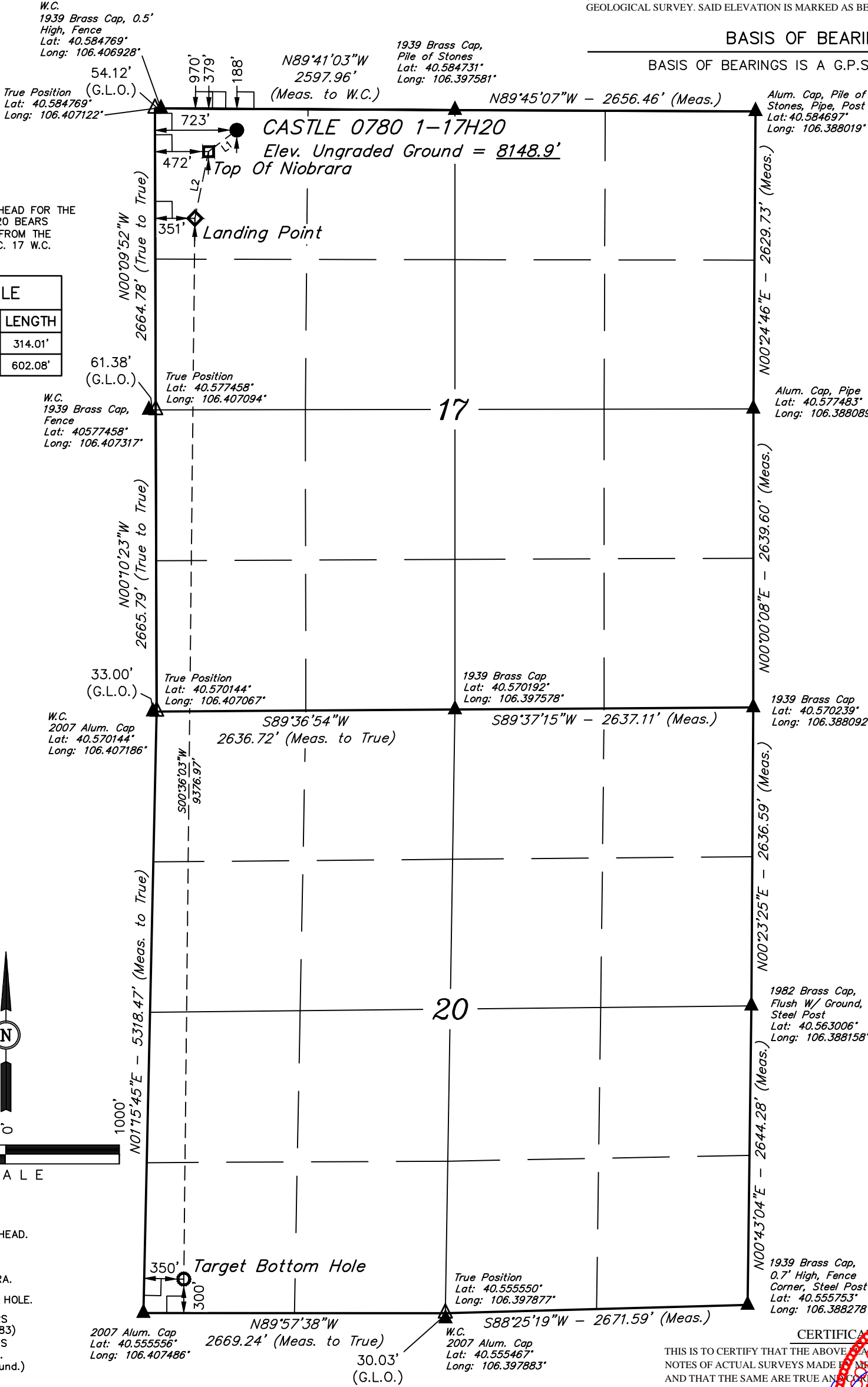
Well location, CASTLE 0780 1-17H20, located as shown in the NW 1/4 NW 1/4 of Section 17, T7N, R80W, 6th P.M., JACKSON County, Colorado.

BASIS OF ELEVATION

SPOT ELEVATION AT THE SOUTHEAST CORNER OF SECTION 29, T7N, R80W, 6th P.M., TAKEN FROM THE COALMONT QUADRANGLE, COLORADO, JACKSON COUNTY, 7.5 MINUTE QUAD (TOPOGRAPHIC MAP) PUBLISHED BY THE UNITED STATES DEPARTMENT OF THE INTERIOR, GEOLOGICAL SURVEY. SAID ELEVATION IS MARKED AS BEING 8156 FEET.

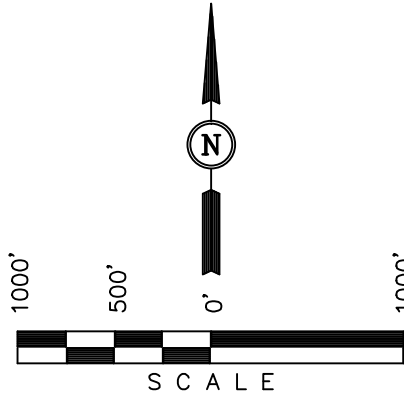
BASIS OF BEARINGS

BASIS OF BEARINGS IS A G.P.S. OBSERVATION.



NOTE:
THE PROPOSED WELLHEAD FOR THE
CASTLE 0780 1-17H20 BEARS
S74°03'35"E 696.18' FROM THE
NORTHWEST COR. SEC. 17 W.C.

LINE TABLE		
LINE	DIRECTION	LENGTH
L1	S52°45'55"W	314.01'
L2	S11°29'48"W	602.08'



- LEGEND:
- = 90° SYMBOL
 - = PROPOSED WELLHEAD.
 - ◆ = LANDING POINT.
 - ◻ = TOP OF NIOBRARA.
 - = TARGET BOTTOM HOLE.
 - ▲ = SECTION CORNERS LOCATED. (NAD 83)
 - △ = SECTION CORNERS RE-ESTABLISHED. (Not Set on Ground.) (NAD 83)

NAD 83 (TARGET BOTTOM HOLE)	
LATITUDE = 40°33'22.96" (40.556378)	
LONGITUDE = 106°24'22.33" (106.406203)	
NAD 27 (TARGET BOTTOM HOLE)	
LATITUDE = 40°33'23.03" (40.556397)	
LONGITUDE = 106°24'20.22" (106.405617)	
STATE PLANE NAD 83 (CO. NORTH)	
N: 1446816.01 E: 2748199.53	
STATE PLANE NAD 27 (CO. NORTH)	
N: 446813.86 E: 1748355.88	
NAD 83 (LANDING POINT)	
LATITUDE = 40°34'55.58" (40.582106)	
LONGITUDE = 106°24'21.06" (106.405850)	
NAD 27 (LANDING POINT)	
LATITUDE = 40°34'55.65" (40.582125)	
LONGITUDE = 106°24'18.95" (106.405264)	
STATE PLANE NAD 83 (CO. NORTH)	
N: 1456187.08 E: 2748393.16	
STATE PLANE NAD 27 (CO. NORTH)	
N: 456184.97 E: 1748549.42	

PDOP = 1.6		
NAD 83 (TOP OF NIOBRARA)	NAD 83 (SURFACE LOCATION)	NAD 27 (SURFACE LOCATION)
LATITUDE = 40°35'01.40" (40.583722)	LATITUDE = 40°35'03.28" (40.584244)	LATITUDE = 40°35'03.36" (40.584267)
LONGITUDE = 106°24'19.51" (106.405419)	LONGITUDE = 106°24'16.27" (106.404519)	LONGITUDE = 106°24'14.16" (106.403933)
STATE PLANE NAD 83 (CO. NORTH)		
N: 1456775.58 E: 2748519.10	N: 1456962.95 E: 2748770.91	N: 1456960.84 E: 1748927.17
STATE PLANE NAD 27 (CO. NORTH)		
N: 456773.47 E: 1748675.36		

CERTIFICATE
THIS IS TO CERTIFY THAT THE ABOVE PLAT WAS PREPARED FROM FIELD NOTES OF ACTUAL SURVEYS MADE BY ME OR UNDER MY SUPERVISION, AND THAT THE SAME ARE TRUE AND CORRECT TO THE BEST OF MY KNOWLEDGE AND BELIEF.



REVISED: 12-22-15 S.S.
REVISED: 12-16-15 C.D.L.
REVISED: 12-14-15 C.D.L.

UINTAH ENGINEERING & LAND SURVEYING		
85 SOUTH 200 EAST - VERNAL, UTAH 84078		
(435) 789-1017		
SCALE 1" = 1000'	DATE SURVEYED: 11-19-15	DATE DRAWN: 11-23-15
PARTY CHAD MEIERS, C.J. C.D.L.	REFERENCES G.L.O. PLAT	
WEATHER COLD	FILE SandRidge Exploration & Production	