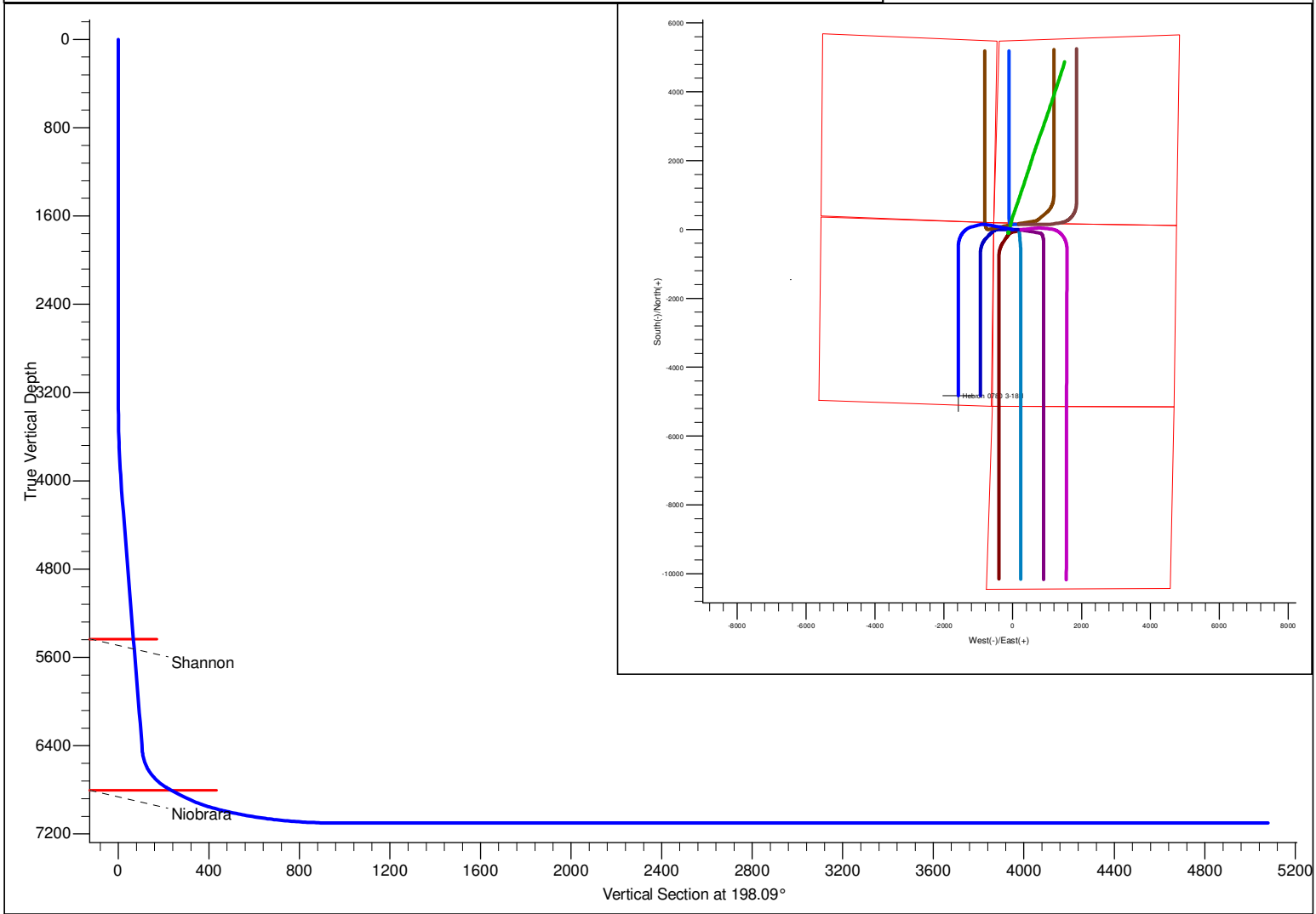


PROJECT DETAILS: North Park Basin				<div><div><div>G</div><div>T</div><div>M</div></div><div><div></div><div></div><div></div></div></div> <div><div>Azimuths to Grid North</div><div>True North: 0.58°</div><div>Magnetic North: 10.48°</div><div>Magnetic Field</div><div>Strength: 53188.8snT</div><div>Dip Angle: 66.97°</div><div>Date: 12/31/2009</div><div>Model: IGRF200510</div></div>				
Geodetic System: US State Plane 1983 Datum: North American Datum 1983 Ellipsoid: GRS 1980 Zone: Colorado Northern Zone  System Datum: Mean Sea Level								
FORMATION TOP DETAILS				CASING DETAILS				
TVDPPathMDPath 5433.0 5501.8 6803.0 7027.3 Formation Shannon Niobrara DipAngleDipDir 0.00 0.00				No casing data is available				
DESIGN DETAILS: Design #1				Project: North Park Basin Site: T7N-R80W-S17 Well: Hebron 0780 3-18H Wellbore: Wellbore #1 Design: Design #1				
0' Vertical Section coordinates								
Type	Target	Azimuth	Origin	Type	N/S	E/W	From	TVD
TD		198.09	Slot		0.0	0.0		0.0



SECTION DETAILS										
Sec	MD	Inc	Azi	TVD	+N/-S	+E/-W	Dleg	TFace	VSect	Target
1	0.0	0.00	0.00	0.0	0.0	0.0	0.00	0.00	0.0	
2	3300.0	0.00	0.00	3300.0	0.0	0.0	0.00	0.00	0.0	
3	4130.4	16.61	280.62	4118.8	22.0	-117.5	2.00	280.62	15.5	
4	6559.9	16.61	280.62	6447.0	150.0	-800.0	0.00	0.00	105.8	
5	7013.4	60.00	255.26	6796.1	109.9	-1067.7	10.00	-31.43	227.1	
6	7163.4	60.00	255.26	6871.1	76.8	-1193.3	0.00	0.00	297.6	
7	7936.1	90.00	180.00	7100.0	-482.0	-1576.9	10.00	-82.50	947.9	Hebron 3-18H
8	12281.1	90.00	180.00	7100.0	-4827.0	-1577.2	0.00	0.00	5078.1	Hebron 3-18H

# **SandRidge Energy**

**North Park Basin  
T7N-R80W-S17  
Hebron 0780 3-18H**

**Wellbore #1**

**Plan: Design #1**

## **Standard Survey Report**

**14 December, 2015**

# SandRidge Energy

## Survey Report

<b>Company:</b>	SandRidge Energy	<b>Local Co-ordinate Reference:</b>	Well Hebron 0780 3-18H
<b>Project:</b>	North Park Basin	<b>TVD Reference:</b>	WELL @ 8172.0usft (Original Well Elev)
<b>Site:</b>	T7N-R80W-S17	<b>MD Reference:</b>	WELL @ 8172.0usft (Original Well Elev)
<b>Well:</b>	Hebron 0780 3-18H	<b>North Reference:</b>	Grid
<b>Wellbore:</b>	Wellbore #1	<b>Survey Calculation Method:</b>	Minimum Curvature
<b>Design:</b>	Design #1	<b>Database:</b>	EDMProd

<b>Project</b>	North Park Basin		
<b>Map System:</b>	US State Plane 1983	<b>System Datum:</b>	Mean Sea Level
<b>Geo Datum:</b>	North American Datum 1983		
<b>Map Zone:</b>	Colorado Northern Zone		

Site	T7N-R80W-S17				
Site Position:		Northing:	1,456,885.51 usft	Latitude:	40° 35' 2.501 N
From:	Lat/Long	Easting:	2,748,625.91 usft	Longitude:	106° 24' 18.140 W
Position Uncertainty:	0.0 usft	Slot Radius:	13-3/16 "	Grid Convergence:	-0.58 °

Well	Hebron 0780 3-18H					
Well Position	+N/-S	0.0 usft	Northing:	1,456,965.66 usft	Latitude:	40° 35' 3.290 N
	+E/-W	0.0 usft	Easting:	2,748,600.93 usft	Longitude:	106° 24' 18.474 W
Position Uncertainty		0.0 usft	Wellhead Elevation:	0.0 usft	Ground Level:	8,156.0 usft

<b>Wellbore</b>	Wellbore #1				
<b>Magnetics</b>	<b>Model Name</b>	<b>Sample Date</b>	<b>Declination (°)</b>	<b>Dip Angle (°)</b>	<b>Field Strength (nT)</b>
	IGRF200510	12/31/2009	9.89	66.97	53,189

<b>Design</b>	Design #1				
<b>Audit Notes:</b>					
<b>Version:</b>	<b>Phase:</b>	PROTOTYPE	<b>Tie On Depth:</b>	0.0	
<b>Vertical Section:</b>	<b>Depth From (TVD) (usft)</b>	<b>+N/-S (usft)</b>	<b>+E/-W (usft)</b>	<b>Direction (°)</b>	
	0.0	0.0	0.0	198.09	

<b>Survey Tool Program</b>	<b>Date</b>	12/14/2015			
<b>From (usft)</b>	<b>To (usft)</b>	<b>Survey (Wellbore)</b>	<b>Tool Name</b>	<b>Description</b>	
0.0	12,280.9	Design #1 (Wellbore #1)	Sperry MWD	Fixed:v2:standard declination	

<b>Planned Survey</b>										
<b>Measured Depth (usft)</b>	<b>Inclination (°)</b>	<b>Azimuth (°)</b>	<b>Vertical Depth (usft)</b>	<b>+N/-S (usft)</b>	<b>+E/-W (usft)</b>	<b>Vertical Section (usft)</b>	<b>Dogleg Rate (°/100usft)</b>	<b>Build Rate (°/100usft)</b>	<b>Turn Rate (°/100usft)</b>	
0.0	0.00	0.00	0.0	0.0	0.0	0.0	0.00	0.00	0.00	
25.0	0.00	0.00	25.0	0.0	0.0	0.0	0.00	0.00	0.00	
50.0	0.00	0.00	50.0	0.0	0.0	0.0	0.00	0.00	0.00	
75.0	0.00	0.00	75.0	0.0	0.0	0.0	0.00	0.00	0.00	
100.0	0.00	0.00	100.0	0.0	0.0	0.0	0.00	0.00	0.00	
125.0	0.00	0.00	125.0	0.0	0.0	0.0	0.00	0.00	0.00	
150.0	0.00	0.00	150.0	0.0	0.0	0.0	0.00	0.00	0.00	
175.0	0.00	0.00	175.0	0.0	0.0	0.0	0.00	0.00	0.00	
200.0	0.00	0.00	200.0	0.0	0.0	0.0	0.00	0.00	0.00	
225.0	0.00	0.00	225.0	0.0	0.0	0.0	0.00	0.00	0.00	

# SandRidge Energy

## Survey Report

<b>Company:</b>	SandRidge Energy	<b>Local Co-ordinate Reference:</b>	Well Hebron 0780 3-18H
<b>Project:</b>	North Park Basin	<b>TVD Reference:</b>	WELL @ 8172.0usft (Original Well Elev)
<b>Site:</b>	T7N-R80W-S17	<b>MD Reference:</b>	WELL @ 8172.0usft (Original Well Elev)
<b>Well:</b>	Hebron 0780 3-18H	<b>North Reference:</b>	Grid
<b>Wellbore:</b>	Wellbore #1	<b>Survey Calculation Method:</b>	Minimum Curvature
<b>Design:</b>	Design #1	<b>Database:</b>	EDMProd

### Planned Survey

Measured Depth (usft)	Inclination (°)	Azimuth (°)	Vertical Depth (usft)	+N/-S (usft)	+E/-W (usft)	Vertical Section (usft)	Dogleg Rate (°/100usft)	Build Rate (°/100usft)	Turn Rate (°/100usft)
250.0	0.00	0.00	250.0	0.0	0.0	0.0	0.00	0.00	0.00
275.0	0.00	0.00	275.0	0.0	0.0	0.0	0.00	0.00	0.00
300.0	0.00	0.00	300.0	0.0	0.0	0.0	0.00	0.00	0.00
325.0	0.00	0.00	325.0	0.0	0.0	0.0	0.00	0.00	0.00
350.0	0.00	0.00	350.0	0.0	0.0	0.0	0.00	0.00	0.00
375.0	0.00	0.00	375.0	0.0	0.0	0.0	0.00	0.00	0.00
400.0	0.00	0.00	400.0	0.0	0.0	0.0	0.00	0.00	0.00
425.0	0.00	0.00	425.0	0.0	0.0	0.0	0.00	0.00	0.00
450.0	0.00	0.00	450.0	0.0	0.0	0.0	0.00	0.00	0.00
475.0	0.00	0.00	475.0	0.0	0.0	0.0	0.00	0.00	0.00
500.0	0.00	0.00	500.0	0.0	0.0	0.0	0.00	0.00	0.00
525.0	0.00	0.00	525.0	0.0	0.0	0.0	0.00	0.00	0.00
550.0	0.00	0.00	550.0	0.0	0.0	0.0	0.00	0.00	0.00
575.0	0.00	0.00	575.0	0.0	0.0	0.0	0.00	0.00	0.00
600.0	0.00	0.00	600.0	0.0	0.0	0.0	0.00	0.00	0.00
625.0	0.00	0.00	625.0	0.0	0.0	0.0	0.00	0.00	0.00
650.0	0.00	0.00	650.0	0.0	0.0	0.0	0.00	0.00	0.00
675.0	0.00	0.00	675.0	0.0	0.0	0.0	0.00	0.00	0.00
700.0	0.00	0.00	700.0	0.0	0.0	0.0	0.00	0.00	0.00
725.0	0.00	0.00	725.0	0.0	0.0	0.0	0.00	0.00	0.00
750.0	0.00	0.00	750.0	0.0	0.0	0.0	0.00	0.00	0.00
775.0	0.00	0.00	775.0	0.0	0.0	0.0	0.00	0.00	0.00
800.0	0.00	0.00	800.0	0.0	0.0	0.0	0.00	0.00	0.00
825.0	0.00	0.00	825.0	0.0	0.0	0.0	0.00	0.00	0.00
850.0	0.00	0.00	850.0	0.0	0.0	0.0	0.00	0.00	0.00
875.0	0.00	0.00	875.0	0.0	0.0	0.0	0.00	0.00	0.00
900.0	0.00	0.00	900.0	0.0	0.0	0.0	0.00	0.00	0.00
925.0	0.00	0.00	925.0	0.0	0.0	0.0	0.00	0.00	0.00
950.0	0.00	0.00	950.0	0.0	0.0	0.0	0.00	0.00	0.00
975.0	0.00	0.00	975.0	0.0	0.0	0.0	0.00	0.00	0.00
1,000.0	0.00	0.00	1,000.0	0.0	0.0	0.0	0.00	0.00	0.00
1,025.0	0.00	0.00	1,025.0	0.0	0.0	0.0	0.00	0.00	0.00
1,050.0	0.00	0.00	1,050.0	0.0	0.0	0.0	0.00	0.00	0.00
1,075.0	0.00	0.00	1,075.0	0.0	0.0	0.0	0.00	0.00	0.00
1,100.0	0.00	0.00	1,100.0	0.0	0.0	0.0	0.00	0.00	0.00
1,125.0	0.00	0.00	1,125.0	0.0	0.0	0.0	0.00	0.00	0.00
1,150.0	0.00	0.00	1,150.0	0.0	0.0	0.0	0.00	0.00	0.00
1,175.0	0.00	0.00	1,175.0	0.0	0.0	0.0	0.00	0.00	0.00
1,200.0	0.00	0.00	1,200.0	0.0	0.0	0.0	0.00	0.00	0.00
1,225.0	0.00	0.00	1,225.0	0.0	0.0	0.0	0.00	0.00	0.00
1,250.0	0.00	0.00	1,250.0	0.0	0.0	0.0	0.00	0.00	0.00
1,275.0	0.00	0.00	1,275.0	0.0	0.0	0.0	0.00	0.00	0.00
1,300.0	0.00	0.00	1,300.0	0.0	0.0	0.0	0.00	0.00	0.00
1,325.0	0.00	0.00	1,325.0	0.0	0.0	0.0	0.00	0.00	0.00

# SandRidge Energy

## Survey Report

<b>Company:</b>	SandRidge Energy	<b>Local Co-ordinate Reference:</b>	Well Hebron 0780 3-18H
<b>Project:</b>	North Park Basin	<b>TVD Reference:</b>	WELL @ 8172.0usft (Original Well Elev)
<b>Site:</b>	T7N-R80W-S17	<b>MD Reference:</b>	WELL @ 8172.0usft (Original Well Elev)
<b>Well:</b>	Hebron 0780 3-18H	<b>North Reference:</b>	Grid
<b>Wellbore:</b>	Wellbore #1	<b>Survey Calculation Method:</b>	Minimum Curvature
<b>Design:</b>	Design #1	<b>Database:</b>	EDMProd

### Planned Survey

Measured Depth (usft)	Inclination (°)	Azimuth (°)	Vertical Depth (usft)	+N/-S (usft)	+E/-W (usft)	Vertical Section (usft)	Dogleg Rate (°/100usft)	Build Rate (°/100usft)	Turn Rate (°/100usft)
1,350.0	0.00	0.00	1,350.0	0.0	0.0	0.0	0.00	0.00	0.00
1,375.0	0.00	0.00	1,375.0	0.0	0.0	0.0	0.00	0.00	0.00
1,400.0	0.00	0.00	1,400.0	0.0	0.0	0.0	0.00	0.00	0.00
1,425.0	0.00	0.00	1,425.0	0.0	0.0	0.0	0.00	0.00	0.00
1,450.0	0.00	0.00	1,450.0	0.0	0.0	0.0	0.00	0.00	0.00
1,475.0	0.00	0.00	1,475.0	0.0	0.0	0.0	0.00	0.00	0.00
1,500.0	0.00	0.00	1,500.0	0.0	0.0	0.0	0.00	0.00	0.00
1,525.0	0.00	0.00	1,525.0	0.0	0.0	0.0	0.00	0.00	0.00
1,550.0	0.00	0.00	1,550.0	0.0	0.0	0.0	0.00	0.00	0.00
1,575.0	0.00	0.00	1,575.0	0.0	0.0	0.0	0.00	0.00	0.00
1,600.0	0.00	0.00	1,600.0	0.0	0.0	0.0	0.00	0.00	0.00
1,625.0	0.00	0.00	1,625.0	0.0	0.0	0.0	0.00	0.00	0.00
1,650.0	0.00	0.00	1,650.0	0.0	0.0	0.0	0.00	0.00	0.00
1,675.0	0.00	0.00	1,675.0	0.0	0.0	0.0	0.00	0.00	0.00
1,700.0	0.00	0.00	1,700.0	0.0	0.0	0.0	0.00	0.00	0.00
1,725.0	0.00	0.00	1,725.0	0.0	0.0	0.0	0.00	0.00	0.00
1,750.0	0.00	0.00	1,750.0	0.0	0.0	0.0	0.00	0.00	0.00
1,775.0	0.00	0.00	1,775.0	0.0	0.0	0.0	0.00	0.00	0.00
1,800.0	0.00	0.00	1,800.0	0.0	0.0	0.0	0.00	0.00	0.00
1,825.0	0.00	0.00	1,825.0	0.0	0.0	0.0	0.00	0.00	0.00
1,850.0	0.00	0.00	1,850.0	0.0	0.0	0.0	0.00	0.00	0.00
1,875.0	0.00	0.00	1,875.0	0.0	0.0	0.0	0.00	0.00	0.00
1,900.0	0.00	0.00	1,900.0	0.0	0.0	0.0	0.00	0.00	0.00
1,925.0	0.00	0.00	1,925.0	0.0	0.0	0.0	0.00	0.00	0.00
1,950.0	0.00	0.00	1,950.0	0.0	0.0	0.0	0.00	0.00	0.00
1,975.0	0.00	0.00	1,975.0	0.0	0.0	0.0	0.00	0.00	0.00
2,000.0	0.00	0.00	2,000.0	0.0	0.0	0.0	0.00	0.00	0.00
2,025.0	0.00	0.00	2,025.0	0.0	0.0	0.0	0.00	0.00	0.00
2,050.0	0.00	0.00	2,050.0	0.0	0.0	0.0	0.00	0.00	0.00
2,075.0	0.00	0.00	2,075.0	0.0	0.0	0.0	0.00	0.00	0.00
2,100.0	0.00	0.00	2,100.0	0.0	0.0	0.0	0.00	0.00	0.00
2,125.0	0.00	0.00	2,125.0	0.0	0.0	0.0	0.00	0.00	0.00
2,150.0	0.00	0.00	2,150.0	0.0	0.0	0.0	0.00	0.00	0.00
2,175.0	0.00	0.00	2,175.0	0.0	0.0	0.0	0.00	0.00	0.00
2,200.0	0.00	0.00	2,200.0	0.0	0.0	0.0	0.00	0.00	0.00
2,225.0	0.00	0.00	2,225.0	0.0	0.0	0.0	0.00	0.00	0.00
2,250.0	0.00	0.00	2,250.0	0.0	0.0	0.0	0.00	0.00	0.00
2,275.0	0.00	0.00	2,275.0	0.0	0.0	0.0	0.00	0.00	0.00
2,300.0	0.00	0.00	2,300.0	0.0	0.0	0.0	0.00	0.00	0.00
2,325.0	0.00	0.00	2,325.0	0.0	0.0	0.0	0.00	0.00	0.00
2,350.0	0.00	0.00	2,350.0	0.0	0.0	0.0	0.00	0.00	0.00
2,375.0	0.00	0.00	2,375.0	0.0	0.0	0.0	0.00	0.00	0.00
2,400.0	0.00	0.00	2,400.0	0.0	0.0	0.0	0.00	0.00	0.00

# SandRidge Energy

## Survey Report

<b>Company:</b>	SandRidge Energy	<b>Local Co-ordinate Reference:</b>	Well Hebron 0780 3-18H
<b>Project:</b>	North Park Basin	<b>TVD Reference:</b>	WELL @ 8172.0usft (Original Well Elev)
<b>Site:</b>	T7N-R80W-S17	<b>MD Reference:</b>	WELL @ 8172.0usft (Original Well Elev)
<b>Well:</b>	Hebron 0780 3-18H	<b>North Reference:</b>	Grid
<b>Wellbore:</b>	Wellbore #1	<b>Survey Calculation Method:</b>	Minimum Curvature
<b>Design:</b>	Design #1	<b>Database:</b>	EDMProd

### Planned Survey

Measured Depth (usft)	Inclination (°)	Azimuth (°)	Vertical Depth (usft)	+N/-S (usft)	+E/-W (usft)	Vertical Section (usft)	Dogleg Rate (°/100usft)	Build Rate (°/100usft)	Turn Rate (°/100usft)
2,425.0	0.00	0.00	2,425.0	0.0	0.0	0.0	0.00	0.00	0.00
2,450.0	0.00	0.00	2,450.0	0.0	0.0	0.0	0.00	0.00	0.00
2,475.0	0.00	0.00	2,475.0	0.0	0.0	0.0	0.00	0.00	0.00
2,500.0	0.00	0.00	2,500.0	0.0	0.0	0.0	0.00	0.00	0.00
2,525.0	0.00	0.00	2,525.0	0.0	0.0	0.0	0.00	0.00	0.00
2,550.0	0.00	0.00	2,550.0	0.0	0.0	0.0	0.00	0.00	0.00
2,575.0	0.00	0.00	2,575.0	0.0	0.0	0.0	0.00	0.00	0.00
2,600.0	0.00	0.00	2,600.0	0.0	0.0	0.0	0.00	0.00	0.00
2,625.0	0.00	0.00	2,625.0	0.0	0.0	0.0	0.00	0.00	0.00
2,650.0	0.00	0.00	2,650.0	0.0	0.0	0.0	0.00	0.00	0.00
2,675.0	0.00	0.00	2,675.0	0.0	0.0	0.0	0.00	0.00	0.00
2,700.0	0.00	0.00	2,700.0	0.0	0.0	0.0	0.00	0.00	0.00
2,725.0	0.00	0.00	2,725.0	0.0	0.0	0.0	0.00	0.00	0.00
2,750.0	0.00	0.00	2,750.0	0.0	0.0	0.0	0.00	0.00	0.00
2,775.0	0.00	0.00	2,775.0	0.0	0.0	0.0	0.00	0.00	0.00
2,800.0	0.00	0.00	2,800.0	0.0	0.0	0.0	0.00	0.00	0.00
2,825.0	0.00	0.00	2,825.0	0.0	0.0	0.0	0.00	0.00	0.00
2,850.0	0.00	0.00	2,850.0	0.0	0.0	0.0	0.00	0.00	0.00
2,875.0	0.00	0.00	2,875.0	0.0	0.0	0.0	0.00	0.00	0.00
2,900.0	0.00	0.00	2,900.0	0.0	0.0	0.0	0.00	0.00	0.00
2,925.0	0.00	0.00	2,925.0	0.0	0.0	0.0	0.00	0.00	0.00
2,950.0	0.00	0.00	2,950.0	0.0	0.0	0.0	0.00	0.00	0.00
2,975.0	0.00	0.00	2,975.0	0.0	0.0	0.0	0.00	0.00	0.00
3,000.0	0.00	0.00	3,000.0	0.0	0.0	0.0	0.00	0.00	0.00
3,025.0	0.00	0.00	3,025.0	0.0	0.0	0.0	0.00	0.00	0.00
3,050.0	0.00	0.00	3,050.0	0.0	0.0	0.0	0.00	0.00	0.00
3,075.0	0.00	0.00	3,075.0	0.0	0.0	0.0	0.00	0.00	0.00
3,100.0	0.00	0.00	3,100.0	0.0	0.0	0.0	0.00	0.00	0.00
3,125.0	0.00	0.00	3,125.0	0.0	0.0	0.0	0.00	0.00	0.00
3,150.0	0.00	0.00	3,150.0	0.0	0.0	0.0	0.00	0.00	0.00
3,175.0	0.00	0.00	3,175.0	0.0	0.0	0.0	0.00	0.00	0.00
3,200.0	0.00	0.00	3,200.0	0.0	0.0	0.0	0.00	0.00	0.00
3,225.0	0.00	0.00	3,225.0	0.0	0.0	0.0	0.00	0.00	0.00
3,250.0	0.00	0.00	3,250.0	0.0	0.0	0.0	0.00	0.00	0.00
3,275.0	0.00	0.00	3,275.0	0.0	0.0	0.0	0.00	0.00	0.00
3,300.0	0.00	0.00	3,300.0	0.0	0.0	0.0	0.00	0.00	0.00
3,325.0	0.50	280.62	3,325.0	0.0	-0.1	0.0	2.00	2.00	0.00
3,350.0	1.00	280.62	3,350.0	0.1	-0.4	0.1	2.00	2.00	0.00
3,375.0	1.50	280.62	3,375.0	0.2	-1.0	0.1	2.00	2.00	0.00
3,400.0	2.00	280.62	3,400.0	0.3	-1.7	0.2	2.00	2.00	0.00
3,425.0	2.50	280.62	3,425.0	0.5	-2.7	0.4	2.00	2.00	0.00
3,450.0	3.00	280.62	3,449.9	0.7	-3.9	0.5	2.00	2.00	0.00
3,475.0	3.50	280.62	3,474.9	1.0	-5.3	0.7	2.00	2.00	0.00

# SandRidge Energy

## Survey Report

<b>Company:</b>	SandRidge Energy	<b>Local Co-ordinate Reference:</b>	Well Hebron 0780 3-18H
<b>Project:</b>	North Park Basin	<b>TVD Reference:</b>	WELL @ 8172.0usft (Original Well Elev)
<b>Site:</b>	T7N-R80W-S17	<b>MD Reference:</b>	WELL @ 8172.0usft (Original Well Elev)
<b>Well:</b>	Hebron 0780 3-18H	<b>North Reference:</b>	Grid
<b>Wellbore:</b>	Wellbore #1	<b>Survey Calculation Method:</b>	Minimum Curvature
<b>Design:</b>	Design #1	<b>Database:</b>	EDMPProd

### Planned Survey

Measured Depth (usft)	Inclination (°)	Azimuth (°)	Vertical Depth (usft)	+N/-S (usft)	+E/-W (usft)	Vertical Section (usft)	Dogleg Rate (°/100usft)	Build Rate (°/100usft)	Turn Rate (°/100usft)
3,500.0	4.00	280.62	3,499.8	1.3	-6.9	0.9	2.00	2.00	0.00
3,525.0	4.50	280.62	3,524.8	1.6	-8.7	1.1	2.00	2.00	0.00
3,550.0	5.00	280.62	3,549.7	2.0	-10.7	1.4	2.00	2.00	0.00
3,575.0	5.50	280.62	3,574.6	2.4	-13.0	1.7	2.00	2.00	0.00
3,600.0	6.00	280.62	3,599.5	2.9	-15.4	2.0	2.00	2.00	0.00
3,625.0	6.50	280.62	3,624.3	3.4	-18.1	2.4	2.00	2.00	0.00
3,650.0	7.00	280.62	3,649.1	3.9	-21.0	2.8	2.00	2.00	0.00
3,675.0	7.50	280.62	3,673.9	4.5	-24.1	3.2	2.00	2.00	0.00
3,700.0	8.00	280.62	3,698.7	5.1	-27.4	3.6	2.00	2.00	0.00
3,725.0	8.50	280.62	3,723.4	5.8	-30.9	4.1	2.00	2.00	0.00
3,750.0	9.00	280.62	3,748.2	6.5	-34.7	4.6	2.00	2.00	0.00
3,775.0	9.50	280.62	3,772.8	7.2	-38.6	5.1	2.00	2.00	0.00
3,800.0	10.00	280.62	3,797.5	8.0	-42.8	5.7	2.00	2.00	0.00
3,825.0	10.50	280.62	3,822.1	8.8	-47.1	6.2	2.00	2.00	0.00
3,850.0	11.00	280.62	3,846.6	9.7	-51.7	6.8	2.00	2.00	0.00
3,875.0	11.50	280.62	3,871.1	10.6	-56.5	7.5	2.00	2.00	0.00
3,900.0	12.00	280.62	3,895.6	11.5	-61.5	8.1	2.00	2.00	0.00
3,925.0	12.50	280.62	3,920.1	12.5	-66.7	8.8	2.00	2.00	0.00
3,950.0	13.00	280.62	3,944.4	13.5	-72.2	9.5	2.00	2.00	0.00
3,975.0	13.50	280.62	3,968.8	14.6	-77.8	10.3	2.00	2.00	0.00
4,000.0	14.00	280.62	3,993.1	15.7	-83.6	11.1	2.00	2.00	0.00
4,025.0	14.50	280.62	4,017.3	16.8	-89.7	11.9	2.00	2.00	0.00
4,050.0	15.00	280.62	4,041.5	18.0	-95.9	12.7	2.00	2.00	0.00
4,075.0	15.50	280.62	4,065.6	19.2	-102.4	13.5	2.00	2.00	0.00
4,100.0	16.00	280.62	4,089.6	20.5	-109.1	14.4	2.00	2.00	0.00
4,125.0	16.50	280.62	4,113.6	21.7	-116.0	15.3	2.00	2.00	0.00
4,130.4	16.61	280.62	4,118.8	22.0	-117.5	15.5	2.00	2.00	0.00
4,150.0	16.61	280.62	4,137.6	23.1	-123.0	16.3	0.00	0.00	0.00
4,175.0	16.61	280.62	4,161.6	24.4	-130.0	17.2	0.00	0.00	0.00
4,200.0	16.61	280.62	4,185.5	25.7	-137.0	18.1	0.00	0.00	0.00
4,225.0	16.61	280.62	4,209.5	27.0	-144.0	19.1	0.00	0.00	0.00
4,250.0	16.61	280.62	4,233.4	28.3	-151.1	20.0	0.00	0.00	0.00
4,275.0	16.61	280.62	4,257.4	29.6	-158.1	20.9	0.00	0.00	0.00
4,300.0	16.61	280.62	4,281.3	31.0	-165.1	21.8	0.00	0.00	0.00
4,325.0	16.61	280.62	4,305.3	32.3	-172.1	22.8	0.00	0.00	0.00
4,350.0	16.61	280.62	4,329.3	33.6	-179.2	23.7	0.00	0.00	0.00
4,375.0	16.61	280.62	4,353.2	34.9	-186.2	24.6	0.00	0.00	0.00
4,400.0	16.61	280.62	4,377.2	36.2	-193.2	25.6	0.00	0.00	0.00
4,425.0	16.61	280.62	4,401.1	37.5	-200.2	26.5	0.00	0.00	0.00
4,450.0	16.61	280.62	4,425.1	38.9	-207.3	27.4	0.00	0.00	0.00
4,475.0	16.61	280.62	4,449.0	40.2	-214.3	28.4	0.00	0.00	0.00
4,500.0	16.61	280.62	4,473.0	41.5	-221.3	29.3	0.00	0.00	0.00
4,525.0	16.61	280.62	4,497.0	42.8	-228.3	30.2	0.00	0.00	0.00
4,550.0	16.61	280.62	4,520.9	44.1	-235.3	31.1	0.00	0.00	0.00

# SandRidge Energy

## Survey Report

<b>Company:</b>	SandRidge Energy	<b>Local Co-ordinate Reference:</b>	Well Hebron 0780 3-18H
<b>Project:</b>	North Park Basin	<b>TVD Reference:</b>	WELL @ 8172.0usft (Original Well Elev)
<b>Site:</b>	T7N-R80W-S17	<b>MD Reference:</b>	WELL @ 8172.0usft (Original Well Elev)
<b>Well:</b>	Hebron 0780 3-18H	<b>North Reference:</b>	Grid
<b>Wellbore:</b>	Wellbore #1	<b>Survey Calculation Method:</b>	Minimum Curvature
<b>Design:</b>	Design #1	<b>Database:</b>	EDMProd

### Planned Survey

Measured Depth (usft)	Inclination (°)	Azimuth (°)	Vertical Depth (usft)	+N/-S (usft)	+E/-W (usft)	Vertical Section (usft)	Dogleg Rate (°/100usft)	Build Rate (°/100usft)	Turn Rate (°/100usft)
4,575.0	16.61	280.62	4,544.9	45.4	-242.4	32.1	0.00	0.00	0.00
4,600.0	16.61	280.62	4,568.8	46.8	-249.4	33.0	0.00	0.00	0.00
4,625.0	16.61	280.62	4,592.8	48.1	-256.4	33.9	0.00	0.00	0.00
4,650.0	16.61	280.62	4,616.7	49.4	-263.4	34.9	0.00	0.00	0.00
4,675.0	16.61	280.62	4,640.7	50.7	-270.5	35.8	0.00	0.00	0.00
4,700.0	16.61	280.62	4,664.7	52.0	-277.5	36.7	0.00	0.00	0.00
4,725.0	16.61	280.62	4,688.6	53.3	-284.5	37.6	0.00	0.00	0.00
4,750.0	16.61	280.62	4,712.6	54.7	-291.5	38.6	0.00	0.00	0.00
4,775.0	16.61	280.62	4,736.5	56.0	-298.6	39.5	0.00	0.00	0.00
4,800.0	16.61	280.62	4,760.5	57.3	-305.6	40.4	0.00	0.00	0.00
4,825.0	16.61	280.62	4,784.4	58.6	-312.6	41.4	0.00	0.00	0.00
4,850.0	16.61	280.62	4,808.4	59.9	-319.6	42.3	0.00	0.00	0.00
4,875.0	16.61	280.62	4,832.4	61.2	-326.6	43.2	0.00	0.00	0.00
4,900.0	16.61	280.62	4,856.3	62.6	-333.7	44.1	0.00	0.00	0.00
4,925.0	16.61	280.62	4,880.3	63.9	-340.7	45.1	0.00	0.00	0.00
4,950.0	16.61	280.62	4,904.2	65.2	-347.7	46.0	0.00	0.00	0.00
4,975.0	16.61	280.62	4,928.2	66.5	-354.7	46.9	0.00	0.00	0.00
5,000.0	16.61	280.62	4,952.1	67.8	-361.8	47.9	0.00	0.00	0.00
5,025.0	16.61	280.62	4,976.1	69.1	-368.8	48.8	0.00	0.00	0.00
5,050.0	16.61	280.62	5,000.1	70.5	-375.8	49.7	0.00	0.00	0.00
5,075.0	16.61	280.62	5,024.0	71.8	-382.8	50.7	0.00	0.00	0.00
5,100.0	16.61	280.62	5,048.0	73.1	-389.9	51.6	0.00	0.00	0.00
5,125.0	16.61	280.62	5,071.9	74.4	-396.9	52.5	0.00	0.00	0.00
5,150.0	16.61	280.62	5,095.9	75.7	-403.9	53.4	0.00	0.00	0.00
5,175.0	16.61	280.62	5,119.8	77.0	-410.9	54.4	0.00	0.00	0.00
5,200.0	16.61	280.62	5,143.8	78.4	-417.9	55.3	0.00	0.00	0.00
5,225.0	16.61	280.62	5,167.8	79.7	-425.0	56.2	0.00	0.00	0.00
5,250.0	16.61	280.62	5,191.7	81.0	-432.0	57.2	0.00	0.00	0.00
5,275.0	16.61	280.62	5,215.7	82.3	-439.0	58.1	0.00	0.00	0.00
5,300.0	16.61	280.62	5,239.6	83.6	-446.0	59.0	0.00	0.00	0.00
5,325.0	16.61	280.62	5,263.6	84.9	-453.1	59.9	0.00	0.00	0.00
5,350.0	16.61	280.62	5,287.5	86.3	-460.1	60.9	0.00	0.00	0.00
5,375.0	16.61	280.62	5,311.5	87.6	-467.1	61.8	0.00	0.00	0.00
5,400.0	16.61	280.62	5,335.5	88.9	-474.1	62.7	0.00	0.00	0.00
5,425.0	16.61	280.62	5,359.4	90.2	-481.2	63.7	0.00	0.00	0.00
5,450.0	16.61	280.62	5,383.4	91.5	-488.2	64.6	0.00	0.00	0.00
5,475.0	16.61	280.62	5,407.3	92.9	-495.2	65.5	0.00	0.00	0.00
5,500.0	16.61	280.62	5,431.3	94.2	-502.2	66.5	0.00	0.00	0.00
5,525.0	16.61	280.62	5,455.2	95.5	-509.3	67.4	0.00	0.00	0.00
5,550.0	16.61	280.62	5,479.2	96.8	-516.3	68.3	0.00	0.00	0.00
5,575.0	16.61	280.62	5,503.2	98.1	-523.3	69.2	0.00	0.00	0.00
5,600.0	16.61	280.62	5,527.1	99.4	-530.3	70.2	0.00	0.00	0.00
5,625.0	16.61	280.62	5,551.1	100.8	-537.3	71.1	0.00	0.00	0.00



# SandRidge Energy

## Survey Report

<b>Company:</b>	SandRidge Energy	<b>Local Co-ordinate Reference:</b>	Well Hebron 0780 3-18H
<b>Project:</b>	North Park Basin	<b>TVD Reference:</b>	WELL @ 8172.0usft (Original Well Elev)
<b>Site:</b>	T7N-R80W-S17	<b>MD Reference:</b>	WELL @ 8172.0usft (Original Well Elev)
<b>Well:</b>	Hebron 0780 3-18H	<b>North Reference:</b>	Grid
<b>Wellbore:</b>	Wellbore #1	<b>Survey Calculation Method:</b>	Minimum Curvature
<b>Design:</b>	Design #1	<b>Database:</b>	EDMProd

### Planned Survey

Measured Depth (usft)	Inclination (°)	Azimuth (°)	Vertical Depth (usft)	+N/-S (usft)	+E/-W (usft)	Vertical Section (usft)	Dogleg Rate (°/100usft)	Build Rate (°/100usft)	Turn Rate (°/100usft)
5,650.0	16.61	280.62	5,575.0	102.1	-544.4	72.0	0.00	0.00	0.00
5,675.0	16.61	280.62	5,599.0	103.4	-551.4	73.0	0.00	0.00	0.00
5,700.0	16.61	280.62	5,622.9	104.7	-558.4	73.9	0.00	0.00	0.00
5,725.0	16.61	280.62	5,646.9	106.0	-565.4	74.8	0.00	0.00	0.00
5,750.0	16.61	280.62	5,670.9	107.3	-572.5	75.7	0.00	0.00	0.00
5,775.0	16.61	280.62	5,694.8	108.7	-579.5	76.7	0.00	0.00	0.00
5,800.0	16.61	280.62	5,718.8	110.0	-586.5	77.6	0.00	0.00	0.00
5,825.0	16.61	280.62	5,742.7	111.3	-593.5	78.5	0.00	0.00	0.00
5,850.0	16.61	280.62	5,766.7	112.6	-600.6	79.5	0.00	0.00	0.00
5,875.0	16.61	280.62	5,790.6	113.9	-607.6	80.4	0.00	0.00	0.00
5,900.0	16.61	280.62	5,814.6	115.2	-614.6	81.3	0.00	0.00	0.00
5,925.0	16.61	280.62	5,838.6	116.6	-621.6	82.2	0.00	0.00	0.00
5,950.0	16.61	280.62	5,862.5	117.9	-628.6	83.2	0.00	0.00	0.00
5,975.0	16.61	280.62	5,886.5	119.2	-635.7	84.1	0.00	0.00	0.00
6,000.0	16.61	280.62	5,910.4	120.5	-642.7	85.0	0.00	0.00	0.00
6,025.0	16.61	280.62	5,934.4	121.8	-649.7	86.0	0.00	0.00	0.00
6,050.0	16.61	280.62	5,958.3	123.1	-656.7	86.9	0.00	0.00	0.00
6,075.0	16.61	280.62	5,982.3	124.5	-663.8	87.8	0.00	0.00	0.00
6,100.0	16.61	280.62	6,006.3	125.8	-670.8	88.8	0.00	0.00	0.00
6,125.0	16.61	280.62	6,030.2	127.1	-677.8	89.7	0.00	0.00	0.00
6,150.0	16.61	280.62	6,054.2	128.4	-684.8	90.6	0.00	0.00	0.00
6,175.0	16.61	280.62	6,078.1	129.7	-691.9	91.5	0.00	0.00	0.00
6,200.0	16.61	280.62	6,102.1	131.0	-698.9	92.5	0.00	0.00	0.00
6,225.0	16.61	280.62	6,126.0	132.4	-705.9	93.4	0.00	0.00	0.00
6,250.0	16.61	280.62	6,150.0	133.7	-712.9	94.3	0.00	0.00	0.00
6,275.0	16.61	280.62	6,173.9	135.0	-720.0	95.3	0.00	0.00	0.00
6,300.0	16.61	280.62	6,197.9	136.3	-727.0	96.2	0.00	0.00	0.00
6,325.0	16.61	280.62	6,221.9	137.6	-734.0	97.1	0.00	0.00	0.00
6,350.0	16.61	280.62	6,245.8	138.9	-741.0	98.0	0.00	0.00	0.00
6,375.0	16.61	280.62	6,269.8	140.3	-748.0	99.0	0.00	0.00	0.00
6,400.0	16.61	280.62	6,293.7	141.6	-755.1	99.9	0.00	0.00	0.00
6,425.0	16.61	280.62	6,317.7	142.9	-762.1	100.8	0.00	0.00	0.00
6,450.0	16.61	280.62	6,341.6	144.2	-769.1	101.8	0.00	0.00	0.00
6,475.0	16.61	280.62	6,365.6	145.5	-776.1	102.7	0.00	0.00	0.00
6,500.0	16.61	280.62	6,389.6	146.8	-783.2	103.6	0.00	0.00	0.00
6,525.0	16.61	280.62	6,413.5	148.2	-790.2	104.6	0.00	0.00	0.00
6,550.0	16.61	280.62	6,437.5	149.5	-797.2	105.5	0.00	0.00	0.00
6,559.9	16.61	280.62	6,447.0	150.0	-800.0	105.8	0.00	0.00	0.00
6,575.0	17.91	278.07	6,461.4	150.7	-804.4	106.5	10.00	8.64	-16.96
6,600.0	20.13	274.54	6,485.0	151.6	-812.5	108.2	10.00	8.89	-14.08
6,625.0	22.41	271.70	6,508.3	152.1	-821.6	110.6	10.00	9.11	-11.36
6,650.0	24.73	269.37	6,531.2	152.2	-831.6	113.6	10.00	9.28	-9.34
6,675.0	27.08	267.41	6,553.7	151.9	-842.5	117.3	10.00	9.40	-7.82

# SandRidge Energy

## Survey Report

<b>Company:</b>	SandRidge Energy	<b>Local Co-ordinate Reference:</b>	Well Hebron 0780 3-18H
<b>Project:</b>	North Park Basin	<b>TVD Reference:</b>	WELL @ 8172.0usft (Original Well Elev)
<b>Site:</b>	T7N-R80W-S17	<b>MD Reference:</b>	WELL @ 8172.0usft (Original Well Elev)
<b>Well:</b>	Hebron 0780 3-18H	<b>North Reference:</b>	Grid
<b>Wellbore:</b>	Wellbore #1	<b>Survey Calculation Method:</b>	Minimum Curvature
<b>Design:</b>	Design #1	<b>Database:</b>	EDMProd

### Planned Survey

Measured Depth (usft)	Inclination (°)	Azimuth (°)	Vertical Depth (usft)	+N/-S (usft)	+E/-W (usft)	Vertical Section (usft)	Dogleg Rate (°/100usft)	Build Rate (°/100usft)	Turn Rate (°/100usft)
6,700.0	29.45	265.75	6,575.7	151.1	-854.3	121.6	10.00	9.49	-6.66
6,725.0	31.84	264.31	6,597.2	150.0	-867.0	126.6	10.00	9.56	-5.74
6,750.0	34.25	263.06	6,618.2	148.5	-880.5	132.3	10.00	9.62	-5.02
6,775.0	36.66	261.95	6,638.6	146.6	-894.9	138.5	10.00	9.66	-4.43
6,800.0	39.09	260.96	6,658.3	144.3	-910.1	145.4	10.00	9.70	-3.96
6,825.0	41.52	260.07	6,677.4	141.7	-926.0	152.9	10.00	9.73	-3.56
6,850.0	43.96	259.26	6,695.7	138.6	-942.7	161.0	10.00	9.76	-3.24
6,875.0	46.41	258.52	6,713.3	135.2	-960.1	169.6	10.00	9.78	-2.96
6,900.0	48.85	257.84	6,730.2	131.4	-978.2	178.8	10.00	9.79	-2.73
6,925.0	51.31	257.20	6,746.2	127.3	-996.9	188.6	10.00	9.81	-2.53
6,950.0	53.76	256.61	6,761.4	122.8	-1,016.2	198.9	10.00	9.82	-2.37
6,975.0	56.22	256.05	6,775.8	117.9	-1,036.1	209.6	10.00	9.83	-2.22
7,000.0	58.68	255.53	6,789.2	112.8	-1,056.6	220.9	10.00	9.84	-2.10
7,013.4	60.00	255.26	6,796.1	109.9	-1,067.7	227.1	10.00	9.85	-2.01
7,025.0	60.00	255.26	6,801.9	107.3	-1,077.4	232.6	0.00	0.00	0.00
7,050.0	60.00	255.26	6,814.4	101.8	-1,098.4	244.3	0.00	0.00	0.00
7,075.0	60.00	255.26	6,826.9	96.3	-1,119.3	256.1	0.00	0.00	0.00
7,100.0	60.00	255.26	6,839.4	90.8	-1,140.2	267.8	0.00	0.00	0.00
7,125.0	60.00	255.26	6,851.9	85.3	-1,161.2	279.5	0.00	0.00	0.00
7,150.0	60.00	255.26	6,864.4	79.8	-1,182.1	291.3	0.00	0.00	0.00
7,163.4	60.00	255.26	6,871.1	76.8	-1,193.3	297.6	0.00	0.00	0.00
7,175.0	60.16	253.93	6,876.8	74.1	-1,203.0	303.1	10.00	1.36	-11.43
7,200.0	60.54	251.09	6,889.2	67.6	-1,223.8	315.8	10.00	1.54	-11.37
7,225.0	60.99	248.27	6,901.4	60.0	-1,244.2	329.3	10.00	1.78	-11.28
7,250.0	61.49	245.48	6,913.4	51.4	-1,264.4	343.7	10.00	2.01	-11.17
7,275.0	62.05	242.71	6,925.3	41.8	-1,284.2	359.0	10.00	2.24	-11.06
7,300.0	62.67	239.98	6,936.9	31.2	-1,303.6	375.2	10.00	2.46	-10.94
7,325.0	63.33	237.27	6,948.2	19.6	-1,322.6	392.1	10.00	2.67	-10.82
7,350.0	64.05	234.60	6,959.3	7.0	-1,341.2	409.8	10.00	2.87	-10.69
7,375.0	64.82	231.96	6,970.1	-6.4	-1,359.3	428.2	10.00	3.06	-10.55
7,400.0	65.63	229.36	6,980.6	-20.8	-1,376.8	447.4	10.00	3.25	-10.42
7,425.0	66.49	226.79	6,990.7	-36.1	-1,393.8	467.1	10.00	3.43	-10.28
7,450.0	67.38	224.25	7,000.5	-52.2	-1,410.2	487.6	10.00	3.59	-10.14
7,475.0	68.32	221.75	7,009.9	-69.1	-1,426.0	508.6	10.00	3.75	-10.01
7,500.0	69.30	219.28	7,019.0	-86.9	-1,441.1	530.1	10.00	3.90	-9.88
7,525.0	70.30	216.85	7,027.6	-105.3	-1,455.6	552.1	10.00	4.04	-9.75
7,550.0	71.35	214.44	7,035.8	-124.5	-1,469.4	574.7	10.00	4.17	-9.63
7,575.0	72.42	212.06	7,043.6	-144.4	-1,482.4	597.6	10.00	4.29	-9.51
7,600.0	73.52	209.71	7,050.9	-164.9	-1,494.7	620.9	10.00	4.40	-9.39
7,625.0	74.64	207.39	7,057.8	-186.0	-1,506.1	644.5	10.00	4.50	-9.29
7,650.0	75.79	205.10	7,064.2	-207.7	-1,516.8	668.5	10.00	4.60	-9.18
7,675.0	76.96	202.82	7,070.1	-229.9	-1,526.7	692.6	10.00	4.68	-9.09
7,700.0	78.15	200.57	7,075.4	-252.6	-1,535.7	717.0	10.00	4.76	-9.00
7,725.0	79.36	198.34	7,080.3	-275.7	-1,543.9	741.5	10.00	4.83	-8.93

# SandRidge Energy

## Survey Report

<b>Company:</b>	SandRidge Energy	<b>Local Co-ordinate Reference:</b>	Well Hebron 0780 3-18H
<b>Project:</b>	North Park Basin	<b>TVD Reference:</b>	WELL @ 8172.0usft (Original Well Elev)
<b>Site:</b>	T7N-R80W-S17	<b>MD Reference:</b>	WELL @ 8172.0usft (Original Well Elev)
<b>Well:</b>	Hebron 0780 3-18H	<b>North Reference:</b>	Grid
<b>Wellbore:</b>	Wellbore #1	<b>Survey Calculation Method:</b>	Minimum Curvature
<b>Design:</b>	Design #1	<b>Database:</b>	EDMProd

### Planned Survey

Measured Depth (usft)	Inclination (°)	Azimuth (°)	Vertical Depth (usft)	+N/-S (usft)	+E/-W (usft)	Vertical Section (usft)	Dogleg Rate (°/100usft)	Build Rate (°/100usft)	Turn Rate (°/100usft)
7,750.0	80.59	196.13	7,084.7	-299.2	-1,551.2	766.1	10.00	4.90	-8.86
7,775.0	81.82	193.93	7,088.5	-323.1	-1,557.6	790.8	10.00	4.95	-8.79
7,800.0	83.07	191.75	7,091.8	-347.2	-1,563.1	815.5	10.00	5.00	-8.74
7,825.0	84.33	189.57	7,094.5	-371.6	-1,567.7	840.1	10.00	5.04	-8.69
7,850.0	85.60	187.41	7,096.7	-396.3	-1,571.4	864.7	10.00	5.07	-8.65
7,875.0	86.87	185.25	7,098.4	-421.1	-1,574.1	889.1	10.00	5.09	-8.62
7,900.0	88.15	183.10	7,099.4	-446.0	-1,575.9	913.3	10.00	5.11	-8.60
7,925.0	89.43	180.95	7,100.0	-471.0	-1,576.8	937.3	10.00	5.12	-8.59
7,936.1	90.00	180.00	7,100.0	-482.0	-1,576.9	947.9	10.00	5.13	-8.59
7,950.0	90.00	180.00	7,100.0	-496.0	-1,576.9	961.1	0.00	0.00	0.00
7,975.0	90.00	180.00	7,100.0	-521.0	-1,576.9	984.9	0.00	0.00	0.00
8,000.0	90.00	180.00	7,100.0	-546.0	-1,576.9	1,008.7	0.00	0.00	0.00
8,025.0	90.00	180.00	7,100.0	-571.0	-1,576.9	1,032.4	0.00	0.00	0.00
8,050.0	90.00	180.00	7,100.0	-596.0	-1,576.9	1,056.2	0.00	0.00	0.00
8,075.0	90.00	180.00	7,100.0	-621.0	-1,576.9	1,080.0	0.00	0.00	0.00
8,100.0	90.00	180.00	7,100.0	-646.0	-1,576.9	1,103.7	0.00	0.00	0.00
8,125.0	90.00	180.00	7,100.0	-671.0	-1,576.9	1,127.5	0.00	0.00	0.00
8,150.0	90.00	180.00	7,100.0	-696.0	-1,576.9	1,151.2	0.00	0.00	0.00
8,175.0	90.00	180.00	7,100.0	-721.0	-1,576.9	1,175.0	0.00	0.00	0.00
8,200.0	90.00	180.00	7,100.0	-746.0	-1,576.9	1,198.8	0.00	0.00	0.00
8,225.0	90.00	180.00	7,100.0	-771.0	-1,576.9	1,222.5	0.00	0.00	0.00
8,250.0	90.00	180.00	7,100.0	-796.0	-1,576.9	1,246.3	0.00	0.00	0.00
8,275.0	90.00	180.00	7,100.0	-821.0	-1,576.9	1,270.1	0.00	0.00	0.00
8,300.0	90.00	180.00	7,100.0	-846.0	-1,576.9	1,293.8	0.00	0.00	0.00
8,325.0	90.00	180.00	7,100.0	-871.0	-1,576.9	1,317.6	0.00	0.00	0.00
8,350.0	90.00	180.00	7,100.0	-896.0	-1,576.9	1,341.4	0.00	0.00	0.00
8,375.0	90.00	180.00	7,100.0	-921.0	-1,576.9	1,365.1	0.00	0.00	0.00
8,400.0	90.00	180.00	7,100.0	-946.0	-1,576.9	1,388.9	0.00	0.00	0.00
8,425.0	90.00	180.00	7,100.0	-971.0	-1,576.9	1,412.7	0.00	0.00	0.00
8,450.0	90.00	180.00	7,100.0	-996.0	-1,576.9	1,436.4	0.00	0.00	0.00
8,475.0	90.00	180.00	7,100.0	-1,021.0	-1,576.9	1,460.2	0.00	0.00	0.00
8,500.0	90.00	180.00	7,100.0	-1,046.0	-1,576.9	1,483.9	0.00	0.00	0.00
8,525.0	90.00	180.00	7,100.0	-1,071.0	-1,576.9	1,507.7	0.00	0.00	0.00
8,550.0	90.00	180.00	7,100.0	-1,096.0	-1,576.9	1,531.5	0.00	0.00	0.00
8,575.0	90.00	180.00	7,100.0	-1,121.0	-1,576.9	1,555.2	0.00	0.00	0.00
8,600.0	90.00	180.00	7,100.0	-1,146.0	-1,576.9	1,579.0	0.00	0.00	0.00
8,625.0	90.00	180.00	7,100.0	-1,171.0	-1,577.0	1,602.8	0.00	0.00	0.00
8,650.0	90.00	180.00	7,100.0	-1,196.0	-1,577.0	1,626.5	0.00	0.00	0.00
8,675.0	90.00	180.00	7,100.0	-1,221.0	-1,577.0	1,650.3	0.00	0.00	0.00
8,700.0	90.00	180.00	7,100.0	-1,246.0	-1,577.0	1,674.1	0.00	0.00	0.00
8,725.0	90.00	180.00	7,100.0	-1,271.0	-1,577.0	1,697.8	0.00	0.00	0.00
8,750.0	90.00	180.00	7,100.0	-1,296.0	-1,577.0	1,721.6	0.00	0.00	0.00
8,775.0	90.00	180.00	7,100.0	-1,321.0	-1,577.0	1,745.4	0.00	0.00	0.00

# SandRidge Energy

## Survey Report

<b>Company:</b>	SandRidge Energy	<b>Local Co-ordinate Reference:</b>	Well Hebron 0780 3-18H
<b>Project:</b>	North Park Basin	<b>TVD Reference:</b>	WELL @ 8172.0usft (Original Well Elev)
<b>Site:</b>	T7N-R80W-S17	<b>MD Reference:</b>	WELL @ 8172.0usft (Original Well Elev)
<b>Well:</b>	Hebron 0780 3-18H	<b>North Reference:</b>	Grid
<b>Wellbore:</b>	Wellbore #1	<b>Survey Calculation Method:</b>	Minimum Curvature
<b>Design:</b>	Design #1	<b>Database:</b>	EDMProd

### Planned Survey

Measured Depth (usft)	Inclination (°)	Azimuth (°)	Vertical Depth (usft)	+N/-S (usft)	+E/-W (usft)	Vertical Section (usft)	Dogleg Rate (°/100usft)	Build Rate (°/100usft)	Turn Rate (°/100usft)
8,800.0	90.00	180.00	7,100.0	-1,346.0	-1,577.0	1,769.1	0.00	0.00	0.00
8,825.0	90.00	180.00	7,100.0	-1,371.0	-1,577.0	1,792.9	0.00	0.00	0.00
8,850.0	90.00	180.00	7,100.0	-1,396.0	-1,577.0	1,816.7	0.00	0.00	0.00
8,875.0	90.00	180.00	7,100.0	-1,421.0	-1,577.0	1,840.4	0.00	0.00	0.00
8,900.0	90.00	180.00	7,100.0	-1,446.0	-1,577.0	1,864.2	0.00	0.00	0.00
8,925.0	90.00	180.00	7,100.0	-1,471.0	-1,577.0	1,887.9	0.00	0.00	0.00
8,950.0	90.00	180.00	7,100.0	-1,496.0	-1,577.0	1,911.7	0.00	0.00	0.00
8,975.0	90.00	180.00	7,100.0	-1,521.0	-1,577.0	1,935.5	0.00	0.00	0.00
9,000.0	90.00	180.00	7,100.0	-1,546.0	-1,577.0	1,959.2	0.00	0.00	0.00
9,025.0	90.00	180.00	7,100.0	-1,571.0	-1,577.0	1,983.0	0.00	0.00	0.00
9,050.0	90.00	180.00	7,100.0	-1,596.0	-1,577.0	2,006.8	0.00	0.00	0.00
9,075.0	90.00	180.00	7,100.0	-1,621.0	-1,577.0	2,030.5	0.00	0.00	0.00
9,100.0	90.00	180.00	7,100.0	-1,646.0	-1,577.0	2,054.3	0.00	0.00	0.00
9,125.0	90.00	180.00	7,100.0	-1,671.0	-1,577.0	2,078.1	0.00	0.00	0.00
9,150.0	90.00	180.00	7,100.0	-1,696.0	-1,577.0	2,101.8	0.00	0.00	0.00
9,175.0	90.00	180.00	7,100.0	-1,721.0	-1,577.0	2,125.6	0.00	0.00	0.00
9,200.0	90.00	180.00	7,100.0	-1,746.0	-1,577.0	2,149.4	0.00	0.00	0.00
9,225.0	90.00	180.00	7,100.0	-1,771.0	-1,577.0	2,173.1	0.00	0.00	0.00
9,250.0	90.00	180.00	7,100.0	-1,796.0	-1,577.0	2,196.9	0.00	0.00	0.00
9,275.0	90.00	180.00	7,100.0	-1,821.0	-1,577.0	2,220.6	0.00	0.00	0.00
9,300.0	90.00	180.00	7,100.0	-1,846.0	-1,577.0	2,244.4	0.00	0.00	0.00
9,325.0	90.00	180.00	7,100.0	-1,871.0	-1,577.0	2,268.2	0.00	0.00	0.00
9,350.0	90.00	180.00	7,100.0	-1,896.0	-1,577.0	2,291.9	0.00	0.00	0.00
9,375.0	90.00	180.00	7,100.0	-1,921.0	-1,577.0	2,315.7	0.00	0.00	0.00
9,400.0	90.00	180.00	7,100.0	-1,946.0	-1,577.0	2,339.5	0.00	0.00	0.00
9,425.0	90.00	180.00	7,100.0	-1,971.0	-1,577.0	2,363.2	0.00	0.00	0.00
9,450.0	90.00	180.00	7,100.0	-1,996.0	-1,577.0	2,387.0	0.00	0.00	0.00
9,475.0	90.00	180.00	7,100.0	-2,021.0	-1,577.0	2,410.8	0.00	0.00	0.00
9,500.0	90.00	180.00	7,100.0	-2,046.0	-1,577.0	2,434.5	0.00	0.00	0.00
9,525.0	90.00	180.00	7,100.0	-2,071.0	-1,577.0	2,458.3	0.00	0.00	0.00
9,550.0	90.00	180.00	7,100.0	-2,096.0	-1,577.0	2,482.1	0.00	0.00	0.00
9,575.0	90.00	180.00	7,100.0	-2,121.0	-1,577.0	2,505.8	0.00	0.00	0.00
9,600.0	90.00	180.00	7,100.0	-2,146.0	-1,577.0	2,529.6	0.00	0.00	0.00
9,625.0	90.00	180.00	7,100.0	-2,171.0	-1,577.0	2,553.4	0.00	0.00	0.00
9,650.0	90.00	180.00	7,100.0	-2,196.0	-1,577.0	2,577.1	0.00	0.00	0.00
9,675.0	90.00	180.00	7,100.0	-2,221.0	-1,577.0	2,600.9	0.00	0.00	0.00
9,700.0	90.00	180.00	7,100.0	-2,246.0	-1,577.0	2,624.6	0.00	0.00	0.00
9,725.0	90.00	180.00	7,100.0	-2,271.0	-1,577.0	2,648.4	0.00	0.00	0.00
9,750.0	90.00	180.00	7,100.0	-2,296.0	-1,577.0	2,672.2	0.00	0.00	0.00
9,775.0	90.00	180.00	7,100.0	-2,321.0	-1,577.0	2,695.9	0.00	0.00	0.00
9,800.0	90.00	180.00	7,100.0	-2,346.0	-1,577.0	2,719.7	0.00	0.00	0.00
9,825.0	90.00	180.00	7,100.0	-2,371.0	-1,577.0	2,743.5	0.00	0.00	0.00
9,850.0	90.00	180.00	7,100.0	-2,396.0	-1,577.0	2,767.2	0.00	0.00	0.00

# SandRidge Energy

## Survey Report

<b>Company:</b>	SandRidge Energy	<b>Local Co-ordinate Reference:</b>	Well Hebron 0780 3-18H
<b>Project:</b>	North Park Basin	<b>TVD Reference:</b>	WELL @ 8172.0usft (Original Well Elev)
<b>Site:</b>	T7N-R80W-S17	<b>MD Reference:</b>	WELL @ 8172.0usft (Original Well Elev)
<b>Well:</b>	Hebron 0780 3-18H	<b>North Reference:</b>	Grid
<b>Wellbore:</b>	Wellbore #1	<b>Survey Calculation Method:</b>	Minimum Curvature
<b>Design:</b>	Design #1	<b>Database:</b>	EDMProd

### Planned Survey

Measured Depth (usft)	Inclination (°)	Azimuth (°)	Vertical Depth (usft)	+N/-S (usft)	+E/-W (usft)	Vertical Section (usft)	Dogleg Rate (°/100usft)	Build Rate (°/100usft)	Turn Rate (°/100usft)
9,875.0	90.00	180.00	7,100.0	-2,421.0	-1,577.0	2,791.0	0.00	0.00	0.00
9,900.0	90.00	180.00	7,100.0	-2,446.0	-1,577.0	2,814.8	0.00	0.00	0.00
9,925.0	90.00	180.00	7,100.0	-2,471.0	-1,577.0	2,838.5	0.00	0.00	0.00
9,950.0	90.00	180.00	7,100.0	-2,496.0	-1,577.0	2,862.3	0.00	0.00	0.00
9,975.0	90.00	180.00	7,100.0	-2,521.0	-1,577.0	2,886.1	0.00	0.00	0.00
10,000.0	90.00	180.00	7,100.0	-2,546.0	-1,577.0	2,909.8	0.00	0.00	0.00
10,025.0	90.00	180.00	7,100.0	-2,571.0	-1,577.0	2,933.6	0.00	0.00	0.00
10,050.0	90.00	180.00	7,100.0	-2,596.0	-1,577.0	2,957.3	0.00	0.00	0.00
10,075.0	90.00	180.00	7,100.0	-2,621.0	-1,577.1	2,981.1	0.00	0.00	0.00
10,100.0	90.00	180.00	7,100.0	-2,646.0	-1,577.1	3,004.9	0.00	0.00	0.00
10,125.0	90.00	180.00	7,100.0	-2,671.0	-1,577.1	3,028.6	0.00	0.00	0.00
10,150.0	90.00	180.00	7,100.0	-2,696.0	-1,577.1	3,052.4	0.00	0.00	0.00
10,175.0	90.00	180.00	7,100.0	-2,721.0	-1,577.1	3,076.2	0.00	0.00	0.00
10,200.0	90.00	180.00	7,100.0	-2,746.0	-1,577.1	3,099.9	0.00	0.00	0.00
10,225.0	90.00	180.00	7,100.0	-2,771.0	-1,577.1	3,123.7	0.00	0.00	0.00
10,250.0	90.00	180.00	7,100.0	-2,796.0	-1,577.1	3,147.5	0.00	0.00	0.00
10,275.0	90.00	180.00	7,100.0	-2,821.0	-1,577.1	3,171.2	0.00	0.00	0.00
10,300.0	90.00	180.00	7,100.0	-2,846.0	-1,577.1	3,195.0	0.00	0.00	0.00
10,325.0	90.00	180.00	7,100.0	-2,871.0	-1,577.1	3,218.8	0.00	0.00	0.00
10,350.0	90.00	180.00	7,100.0	-2,896.0	-1,577.1	3,242.5	0.00	0.00	0.00
10,375.0	90.00	180.00	7,100.0	-2,921.0	-1,577.1	3,266.3	0.00	0.00	0.00
10,400.0	90.00	180.00	7,100.0	-2,946.0	-1,577.1	3,290.1	0.00	0.00	0.00
10,425.0	90.00	180.00	7,100.0	-2,971.0	-1,577.1	3,313.8	0.00	0.00	0.00
10,450.0	90.00	180.00	7,100.0	-2,996.0	-1,577.1	3,337.6	0.00	0.00	0.00
10,475.0	90.00	180.00	7,100.0	-3,021.0	-1,577.1	3,361.3	0.00	0.00	0.00
10,500.0	90.00	180.00	7,100.0	-3,046.0	-1,577.1	3,385.1	0.00	0.00	0.00
10,525.0	90.00	180.00	7,100.0	-3,071.0	-1,577.1	3,408.9	0.00	0.00	0.00
10,550.0	90.00	180.00	7,100.0	-3,096.0	-1,577.1	3,432.6	0.00	0.00	0.00
10,575.0	90.00	180.00	7,100.0	-3,121.0	-1,577.1	3,456.4	0.00	0.00	0.00
10,600.0	90.00	180.00	7,100.0	-3,146.0	-1,577.1	3,480.2	0.00	0.00	0.00
10,625.0	90.00	180.00	7,100.0	-3,171.0	-1,577.1	3,503.9	0.00	0.00	0.00
10,650.0	90.00	180.00	7,100.0	-3,196.0	-1,577.1	3,527.7	0.00	0.00	0.00
10,675.0	90.00	180.00	7,100.0	-3,221.0	-1,577.1	3,551.5	0.00	0.00	0.00
10,700.0	90.00	180.00	7,100.0	-3,246.0	-1,577.1	3,575.2	0.00	0.00	0.00
10,725.0	90.00	180.00	7,100.0	-3,271.0	-1,577.1	3,599.0	0.00	0.00	0.00
10,750.0	90.00	180.00	7,100.0	-3,296.0	-1,577.1	3,622.8	0.00	0.00	0.00
10,775.0	90.00	180.00	7,100.0	-3,321.0	-1,577.1	3,646.5	0.00	0.00	0.00
10,800.0	90.00	180.00	7,100.0	-3,346.0	-1,577.1	3,670.3	0.00	0.00	0.00
10,825.0	90.00	180.00	7,100.0	-3,371.0	-1,577.1	3,694.0	0.00	0.00	0.00
10,850.0	90.00	180.00	7,100.0	-3,396.0	-1,577.1	3,717.8	0.00	0.00	0.00
10,875.0	90.00	180.00	7,100.0	-3,421.0	-1,577.1	3,741.6	0.00	0.00	0.00
10,900.0	90.00	180.00	7,100.0	-3,446.0	-1,577.1	3,765.3	0.00	0.00	0.00
10,925.0	90.00	180.00	7,100.0	-3,471.0	-1,577.1	3,789.1	0.00	0.00	0.00
10,950.0	90.00	180.00	7,100.0	-3,496.0	-1,577.1	3,812.9	0.00	0.00	0.00

# SandRidge Energy

## Survey Report

<b>Company:</b>	SandRidge Energy	<b>Local Co-ordinate Reference:</b>	Well Hebron 0780 3-18H
<b>Project:</b>	North Park Basin	<b>TVD Reference:</b>	WELL @ 8172.0usft (Original Well Elev)
<b>Site:</b>	T7N-R80W-S17	<b>MD Reference:</b>	WELL @ 8172.0usft (Original Well Elev)
<b>Well:</b>	Hebron 0780 3-18H	<b>North Reference:</b>	Grid
<b>Wellbore:</b>	Wellbore #1	<b>Survey Calculation Method:</b>	Minimum Curvature
<b>Design:</b>	Design #1	<b>Database:</b>	EDMProd

### Planned Survey

Measured Depth (usft)	Inclination (°)	Azimuth (°)	Vertical Depth (usft)	+N/-S (usft)	+E/-W (usft)	Vertical Section (usft)	Dogleg Rate (°/100usft)	Build Rate (°/100usft)	Turn Rate (°/100usft)
10,975.0	90.00	180.00	7,100.0	-3,521.0	-1,577.1	3,836.6	0.00	0.00	0.00
11,000.0	90.00	180.00	7,100.0	-3,546.0	-1,577.1	3,860.4	0.00	0.00	0.00
11,025.0	90.00	180.00	7,100.0	-3,571.0	-1,577.1	3,884.2	0.00	0.00	0.00
11,050.0	90.00	180.00	7,100.0	-3,596.0	-1,577.1	3,907.9	0.00	0.00	0.00
11,075.0	90.00	180.00	7,100.0	-3,621.0	-1,577.1	3,931.7	0.00	0.00	0.00
11,100.0	90.00	180.00	7,100.0	-3,646.0	-1,577.1	3,955.5	0.00	0.00	0.00
11,125.0	90.00	180.00	7,100.0	-3,671.0	-1,577.1	3,979.2	0.00	0.00	0.00
11,150.0	90.00	180.00	7,100.0	-3,696.0	-1,577.1	4,003.0	0.00	0.00	0.00
11,175.0	90.00	180.00	7,100.0	-3,721.0	-1,577.1	4,026.8	0.00	0.00	0.00
11,200.0	90.00	180.00	7,100.0	-3,746.0	-1,577.1	4,050.5	0.00	0.00	0.00
11,225.0	90.00	180.00	7,100.0	-3,771.0	-1,577.1	4,074.3	0.00	0.00	0.00
11,250.0	90.00	180.00	7,100.0	-3,796.0	-1,577.1	4,098.0	0.00	0.00	0.00
11,275.0	90.00	180.00	7,100.0	-3,821.0	-1,577.1	4,121.8	0.00	0.00	0.00
11,300.0	90.00	180.00	7,100.0	-3,846.0	-1,577.1	4,145.6	0.00	0.00	0.00
11,325.0	90.00	180.00	7,100.0	-3,871.0	-1,577.1	4,169.3	0.00	0.00	0.00
11,350.0	90.00	180.00	7,100.0	-3,896.0	-1,577.1	4,193.1	0.00	0.00	0.00
11,375.0	90.00	180.00	7,100.0	-3,921.0	-1,577.1	4,216.9	0.00	0.00	0.00
11,400.0	90.00	180.00	7,100.0	-3,946.0	-1,577.1	4,240.6	0.00	0.00	0.00
11,425.0	90.00	180.00	7,100.0	-3,971.0	-1,577.1	4,264.4	0.00	0.00	0.00
11,450.0	90.00	180.00	7,100.0	-3,996.0	-1,577.1	4,288.2	0.00	0.00	0.00
11,475.0	90.00	180.00	7,100.0	-4,021.0	-1,577.1	4,311.9	0.00	0.00	0.00
11,500.0	90.00	180.00	7,100.0	-4,046.0	-1,577.1	4,335.7	0.00	0.00	0.00
11,525.0	90.00	180.00	7,100.0	-4,071.0	-1,577.1	4,359.5	0.00	0.00	0.00
11,550.0	90.00	180.00	7,100.0	-4,096.0	-1,577.2	4,383.2	0.00	0.00	0.00
11,575.0	90.00	180.00	7,100.0	-4,121.0	-1,577.2	4,407.0	0.00	0.00	0.00
11,600.0	90.00	180.00	7,100.0	-4,146.0	-1,577.2	4,430.7	0.00	0.00	0.00
11,625.0	90.00	180.00	7,100.0	-4,171.0	-1,577.2	4,454.5	0.00	0.00	0.00
11,650.0	90.00	180.00	7,100.0	-4,196.0	-1,577.2	4,478.3	0.00	0.00	0.00
11,675.0	90.00	180.00	7,100.0	-4,221.0	-1,577.2	4,502.0	0.00	0.00	0.00
11,700.0	90.00	180.00	7,100.0	-4,246.0	-1,577.2	4,525.8	0.00	0.00	0.00
11,725.0	90.00	180.00	7,100.0	-4,271.0	-1,577.2	4,549.6	0.00	0.00	0.00
11,750.0	90.00	180.00	7,100.0	-4,296.0	-1,577.2	4,573.3	0.00	0.00	0.00
11,775.0	90.00	180.00	7,100.0	-4,321.0	-1,577.2	4,597.1	0.00	0.00	0.00
11,800.0	90.00	180.00	7,100.0	-4,346.0	-1,577.2	4,620.9	0.00	0.00	0.00
11,825.0	90.00	180.00	7,100.0	-4,371.0	-1,577.2	4,644.6	0.00	0.00	0.00
11,850.0	90.00	180.00	7,100.0	-4,396.0	-1,577.2	4,668.4	0.00	0.00	0.00
11,875.0	90.00	180.00	7,100.0	-4,421.0	-1,577.2	4,692.2	0.00	0.00	0.00
11,900.0	90.00	180.00	7,100.0	-4,446.0	-1,577.2	4,715.9	0.00	0.00	0.00
11,925.0	90.00	180.00	7,100.0	-4,471.0	-1,577.2	4,739.7	0.00	0.00	0.00
11,950.0	90.00	180.00	7,100.0	-4,496.0	-1,577.2	4,763.5	0.00	0.00	0.00
11,975.0	90.00	180.00	7,100.0	-4,521.0	-1,577.2	4,787.2	0.00	0.00	0.00
12,000.0	90.00	180.00	7,100.0	-4,546.0	-1,577.2	4,811.0	0.00	0.00	0.00
12,025.0	90.00	180.00	7,100.0	-4,571.0	-1,577.2	4,834.7	0.00	0.00	0.00

# SandRidge Energy

## Survey Report

<b>Company:</b>	SandRidge Energy	<b>Local Co-ordinate Reference:</b>	Well Hebron 0780 3-18H
<b>Project:</b>	North Park Basin	<b>TVD Reference:</b>	WELL @ 8172.0usft (Original Well Elev)
<b>Site:</b>	T7N-R80W-S17	<b>MD Reference:</b>	WELL @ 8172.0usft (Original Well Elev)
<b>Well:</b>	Hebron 0780 3-18H	<b>North Reference:</b>	Grid
<b>Wellbore:</b>	Wellbore #1	<b>Survey Calculation Method:</b>	Minimum Curvature
<b>Design:</b>	Design #1	<b>Database:</b>	EDMPProd

### Planned Survey

Measured Depth (usft)	Inclination (°)	Azimuth (°)	Vertical Depth (usft)	+N/-S (usft)	+E/-W (usft)	Vertical Section (usft)	Dogleg Rate (°/100usft)	Build Rate (°/100usft)	Turn Rate (°/100usft)
12,050.0	90.00	180.00	7,100.0	-4,596.0	-1,577.2	4,858.5	0.00	0.00	0.00
12,075.0	90.00	180.00	7,100.0	-4,621.0	-1,577.2	4,882.3	0.00	0.00	0.00
12,100.0	90.00	180.00	7,100.0	-4,646.0	-1,577.2	4,906.0	0.00	0.00	0.00
12,125.0	90.00	180.00	7,100.0	-4,671.0	-1,577.2	4,929.8	0.00	0.00	0.00
12,150.0	90.00	180.00	7,100.0	-4,696.0	-1,577.2	4,953.6	0.00	0.00	0.00
12,175.0	90.00	180.00	7,100.0	-4,721.0	-1,577.2	4,977.3	0.00	0.00	0.00
12,200.0	90.00	180.00	7,100.0	-4,746.0	-1,577.2	5,001.1	0.00	0.00	0.00
12,225.0	90.00	180.00	7,100.0	-4,771.0	-1,577.2	5,024.9	0.00	0.00	0.00
12,250.0	90.00	180.00	7,100.0	-4,796.0	-1,577.2	5,048.6	0.00	0.00	0.00
12,275.0	90.00	180.00	7,100.0	-4,821.0	-1,577.2	5,072.4	0.00	0.00	0.00
12,281.1	90.00	180.00	7,100.0	-4,827.0	-1,577.2	5,078.1	0.00	0.00	0.00

### Design Targets

Target Name	Dip Angle (°)	Dip Dir. (°)	TVD (usft)	+N/-S (usft)	+E/-W (usft)	Northing (usft)	Easting (usft)	Latitude	Longitude
- hit/miss target									
- Shape									
Hebron 3-18H	0.00	360.00	7,100.0	-4,827.0	-1,577.2	1,452,138.65	2,747,023.73	40° 34' 15.435 N	106° 24' 38.273 W
- plan hits target center									
- Point									

### Formations

Measured Depth (usft)	Vertical Depth (usft)	Name	Lithology	Dip (°)	Dip Direction (°)
5,501.8	5,433.0	Shannon		0.00	
7,027.3	6,803.0	Niobrara		0.00	

Checked By: \_\_\_\_\_ Approved By: \_\_\_\_\_ Date: \_\_\_\_\_