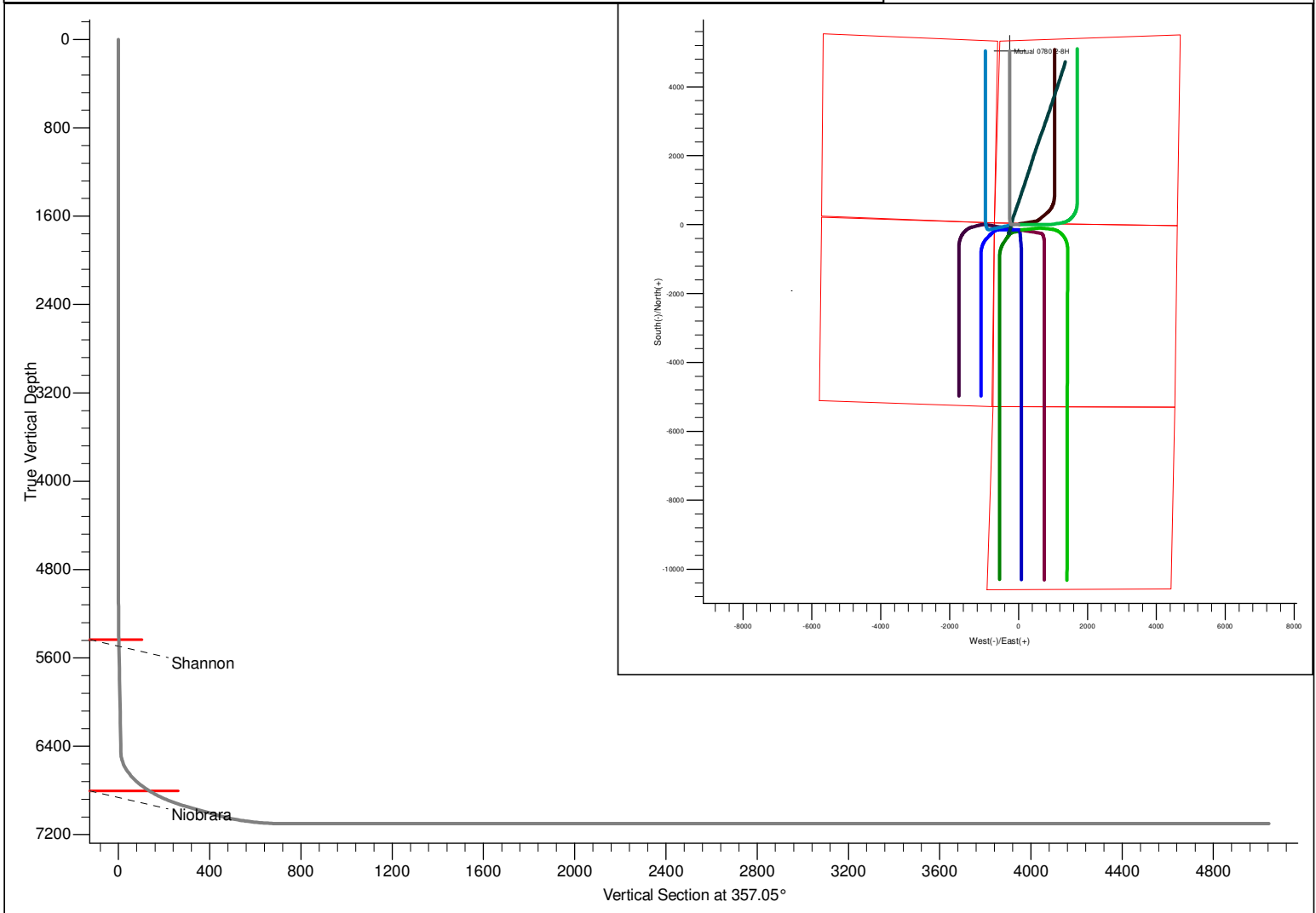


PROJECT DETAILS: North Park Basin							<div>Azimuths to Grid North True North: 0.58° Magnetic North: 10.48° Magnetic Field Strength: 53189.1snT Dip Angle: 66.97° Date: 12/31/2009 Model: IGRF200510</div>
Geodetic System: US State Plane 1983 Datum: North American Datum 1983 Ellipsoid: GRS 1980 Zone: Colorado Northern Zone System Datum: Mean Sea Level							
FORMATION TOP DETAILS							
TVDPathMDPath		Formation		DipAngleDipDir			CASING DETAILS
5433.0 5434.7		Shannon		0.00			
6803.0 6849.5		Niobrara		0.00			No casing data is available
DESIGN DETAILS: Design #1							Project: North Park Basin Site: T7N-R80W-S17 Well: Mutual 0780 2-8H Wellbore: Wellbore #1 Design: Design #1
0' Vertical Section coordinates							
Type	Target	Azimuth	Origin	Type	N/S	E/W From TVD	
TD		357.05	Slot		0.0	0.0 0.0	



SECTION DETAILS										
Sec	MD	Inc	Azi	TVD	+N/-S	+E/-W	Dleg	TFace	VSect	Target
1	0.0	0.00	0.00	0.0	0.0	0.0	0.00	0.00	0.0	
2	5000.0	0.00	0.00	5000.0	0.0	0.0	0.00	0.00	0.0	
3	5477.5	9.55	270.00	5475.3	0.0	-39.7	2.00	270.00	2.0	
4	6467.8	9.55	270.00	6451.9	0.0	-204.0	0.00	0.00	10.5	
5	7072.4	60.00	0.00	6948.1	289.1	-259.4	10.00	95.47	302.1	Mutual 2-8H
6	7222.4	60.00	0.00	7023.1	419.0	-259.4	0.00	0.00	431.8	
7	7522.4	90.00	0.00	7099.8	705.5	-259.4	10.00	0.00	717.9	Mutual 2-8H
8	11853.4	90.00	0.00	7099.8	5036.5	-259.2	0.00	0.00	5043.2	Mutual 2-8H

SandRidge Energy

North Park Basin

T7N-R80W-S17

Mutual 0780 2-8H

Wellbore #1

Plan: Design #1

Standard Survey Report

14 December, 2015

SandRidge Energy

Survey Report

Company:	SandRidge Energy	Local Co-ordinate Reference:	Well Mutual 0780 2-8H
Project:	North Park Basin	TVD Reference:	WELL @ 8172.0usft (Original Well Elev)
Site:	T7N-R80W-S17	MD Reference:	WELL @ 8172.0usft (Original Well Elev)
Well:	Mutual 0780 2-8H	North Reference:	Grid
Wellbore:	Wellbore #1	Survey Calculation Method:	Minimum Curvature
Design:	Design #1	Database:	EDMProd

Project	North Park Basin		
Map System:	US State Plane 1983	System Datum:	Mean Sea Level
Geo Datum:	North American Datum 1983		
Map Zone:	Colorado Northern Zone		

Site	T7N-R80W-S17				
Site Position:		Northing:	1,456,885.51 usft	Latitude:	40° 35' 2.501 N
From:	Lat/Long	Easting:	2,748,625.91 usft	Longitude:	106° 24' 18.140 W
Position Uncertainty:	0.0 usft	Slot Radius:	13-3/16 "	Grid Convergence:	-0.58 °

Well		Mutual 0780 2-8H				
Well Position	+N/-S	0.0 usft	Northing:	1,457,113.25 usft	Latitude:	40° 35' 4.764 N
	+E/-W	0.0 usft	Easting:	2,748,753.25 usft	Longitude:	106° 24' 16.520 W
Position Uncertainty		0.0 usft	Wellhead Elevation:	0.0 usft	Ground Level:	8,156.0 usft

Wellbore	Wellbore #1				
Magnetics	Model Name	Sample Date	Declination (°)	Dip Angle (°)	Field Strength (nT)
	IGRF200510	12/31/2009	9.89	66.97	53,189

Design	Design #1				
Audit Notes:					
Version:	Phase:	PROTOTYPE	Tie On Depth:	0.0	
Vertical Section:	Depth From (TVD) (usft)	+N/-S (usft)	+E/-W (usft)	Direction (°)	
	0.0	0.0	0.0	357.05	

Survey Tool Program	Date	12/14/2015			
From (usft)	To (usft)	Survey (Wellbore)	Tool Name	Description	
0.0	11,852.6	Design #1 (Wellbore #1)	Sperry MWD	Fixed:v2:standard declination	

Planned Survey										
Measured Depth (usft)	Inclination (°)	Azimuth (°)	Vertical Depth (usft)	+N/-S (usft)	+E/-W (usft)	Vertical Section (usft)	Dogleg Rate (°/100usft)	Build Rate (°/100usft)	Turn Rate (°/100usft)	
0.0	0.00	0.00	0.0	0.0	0.0	0.0	0.00	0.00	0.00	
25.0	0.00	0.00	25.0	0.0	0.0	0.0	0.00	0.00	0.00	
50.0	0.00	0.00	50.0	0.0	0.0	0.0	0.00	0.00	0.00	
75.0	0.00	0.00	75.0	0.0	0.0	0.0	0.00	0.00	0.00	
100.0	0.00	0.00	100.0	0.0	0.0	0.0	0.00	0.00	0.00	
125.0	0.00	0.00	125.0	0.0	0.0	0.0	0.00	0.00	0.00	
150.0	0.00	0.00	150.0	0.0	0.0	0.0	0.00	0.00	0.00	
175.0	0.00	0.00	175.0	0.0	0.0	0.0	0.00	0.00	0.00	
200.0	0.00	0.00	200.0	0.0	0.0	0.0	0.00	0.00	0.00	
225.0	0.00	0.00	225.0	0.0	0.0	0.0	0.00	0.00	0.00	

SandRidge Energy

Survey Report

Company:	SandRidge Energy	Local Co-ordinate Reference:	Well Mutual 0780 2-8H
Project:	North Park Basin	TVD Reference:	WELL @ 8172.0usft (Original Well Elev)
Site:	T7N-R80W-S17	MD Reference:	WELL @ 8172.0usft (Original Well Elev)
Well:	Mutual 0780 2-8H	North Reference:	Grid
Wellbore:	Wellbore #1	Survey Calculation Method:	Minimum Curvature
Design:	Design #1	Database:	EDMProd

Planned Survey

Measured Depth (usft)	Inclination (°)	Azimuth (°)	Vertical Depth (usft)	+N/-S (usft)	+E/-W (usft)	Vertical Section (usft)	Dogleg Rate (°/100usft)	Build Rate (°/100usft)	Turn Rate (°/100usft)
250.0	0.00	0.00	250.0	0.0	0.0	0.0	0.00	0.00	0.00
275.0	0.00	0.00	275.0	0.0	0.0	0.0	0.00	0.00	0.00
300.0	0.00	0.00	300.0	0.0	0.0	0.0	0.00	0.00	0.00
325.0	0.00	0.00	325.0	0.0	0.0	0.0	0.00	0.00	0.00
350.0	0.00	0.00	350.0	0.0	0.0	0.0	0.00	0.00	0.00
375.0	0.00	0.00	375.0	0.0	0.0	0.0	0.00	0.00	0.00
400.0	0.00	0.00	400.0	0.0	0.0	0.0	0.00	0.00	0.00
425.0	0.00	0.00	425.0	0.0	0.0	0.0	0.00	0.00	0.00
450.0	0.00	0.00	450.0	0.0	0.0	0.0	0.00	0.00	0.00
475.0	0.00	0.00	475.0	0.0	0.0	0.0	0.00	0.00	0.00
500.0	0.00	0.00	500.0	0.0	0.0	0.0	0.00	0.00	0.00
525.0	0.00	0.00	525.0	0.0	0.0	0.0	0.00	0.00	0.00
550.0	0.00	0.00	550.0	0.0	0.0	0.0	0.00	0.00	0.00
575.0	0.00	0.00	575.0	0.0	0.0	0.0	0.00	0.00	0.00
600.0	0.00	0.00	600.0	0.0	0.0	0.0	0.00	0.00	0.00
625.0	0.00	0.00	625.0	0.0	0.0	0.0	0.00	0.00	0.00
650.0	0.00	0.00	650.0	0.0	0.0	0.0	0.00	0.00	0.00
675.0	0.00	0.00	675.0	0.0	0.0	0.0	0.00	0.00	0.00
700.0	0.00	0.00	700.0	0.0	0.0	0.0	0.00	0.00	0.00
725.0	0.00	0.00	725.0	0.0	0.0	0.0	0.00	0.00	0.00
750.0	0.00	0.00	750.0	0.0	0.0	0.0	0.00	0.00	0.00
775.0	0.00	0.00	775.0	0.0	0.0	0.0	0.00	0.00	0.00
800.0	0.00	0.00	800.0	0.0	0.0	0.0	0.00	0.00	0.00
825.0	0.00	0.00	825.0	0.0	0.0	0.0	0.00	0.00	0.00
850.0	0.00	0.00	850.0	0.0	0.0	0.0	0.00	0.00	0.00
875.0	0.00	0.00	875.0	0.0	0.0	0.0	0.00	0.00	0.00
900.0	0.00	0.00	900.0	0.0	0.0	0.0	0.00	0.00	0.00
925.0	0.00	0.00	925.0	0.0	0.0	0.0	0.00	0.00	0.00
950.0	0.00	0.00	950.0	0.0	0.0	0.0	0.00	0.00	0.00
975.0	0.00	0.00	975.0	0.0	0.0	0.0	0.00	0.00	0.00
1,000.0	0.00	0.00	1,000.0	0.0	0.0	0.0	0.00	0.00	0.00
1,025.0	0.00	0.00	1,025.0	0.0	0.0	0.0	0.00	0.00	0.00
1,050.0	0.00	0.00	1,050.0	0.0	0.0	0.0	0.00	0.00	0.00
1,075.0	0.00	0.00	1,075.0	0.0	0.0	0.0	0.00	0.00	0.00
1,100.0	0.00	0.00	1,100.0	0.0	0.0	0.0	0.00	0.00	0.00
1,125.0	0.00	0.00	1,125.0	0.0	0.0	0.0	0.00	0.00	0.00
1,150.0	0.00	0.00	1,150.0	0.0	0.0	0.0	0.00	0.00	0.00
1,175.0	0.00	0.00	1,175.0	0.0	0.0	0.0	0.00	0.00	0.00
1,200.0	0.00	0.00	1,200.0	0.0	0.0	0.0	0.00	0.00	0.00
1,225.0	0.00	0.00	1,225.0	0.0	0.0	0.0	0.00	0.00	0.00
1,250.0	0.00	0.00	1,250.0	0.0	0.0	0.0	0.00	0.00	0.00
1,275.0	0.00	0.00	1,275.0	0.0	0.0	0.0	0.00	0.00	0.00
1,300.0	0.00	0.00	1,300.0	0.0	0.0	0.0	0.00	0.00	0.00
1,325.0	0.00	0.00	1,325.0	0.0	0.0	0.0	0.00	0.00	0.00

SandRidge Energy

Survey Report

Company:	SandRidge Energy	Local Co-ordinate Reference:	Well Mutual 0780 2-8H
Project:	North Park Basin	TVD Reference:	WELL @ 8172.0usft (Original Well Elev)
Site:	T7N-R80W-S17	MD Reference:	WELL @ 8172.0usft (Original Well Elev)
Well:	Mutual 0780 2-8H	North Reference:	Grid
Wellbore:	Wellbore #1	Survey Calculation Method:	Minimum Curvature
Design:	Design #1	Database:	EDMProd

Planned Survey

Measured Depth (usft)	Inclination (°)	Azimuth (°)	Vertical Depth (usft)	+N/-S (usft)	+E/-W (usft)	Vertical Section (usft)	Dogleg Rate (°/100usft)	Build Rate (°/100usft)	Turn Rate (°/100usft)
1,350.0	0.00	0.00	1,350.0	0.0	0.0	0.0	0.00	0.00	0.00
1,375.0	0.00	0.00	1,375.0	0.0	0.0	0.0	0.00	0.00	0.00
1,400.0	0.00	0.00	1,400.0	0.0	0.0	0.0	0.00	0.00	0.00
1,425.0	0.00	0.00	1,425.0	0.0	0.0	0.0	0.00	0.00	0.00
1,450.0	0.00	0.00	1,450.0	0.0	0.0	0.0	0.00	0.00	0.00
1,475.0	0.00	0.00	1,475.0	0.0	0.0	0.0	0.00	0.00	0.00
1,500.0	0.00	0.00	1,500.0	0.0	0.0	0.0	0.00	0.00	0.00
1,525.0	0.00	0.00	1,525.0	0.0	0.0	0.0	0.00	0.00	0.00
1,550.0	0.00	0.00	1,550.0	0.0	0.0	0.0	0.00	0.00	0.00
1,575.0	0.00	0.00	1,575.0	0.0	0.0	0.0	0.00	0.00	0.00
1,600.0	0.00	0.00	1,600.0	0.0	0.0	0.0	0.00	0.00	0.00
1,625.0	0.00	0.00	1,625.0	0.0	0.0	0.0	0.00	0.00	0.00
1,650.0	0.00	0.00	1,650.0	0.0	0.0	0.0	0.00	0.00	0.00
1,675.0	0.00	0.00	1,675.0	0.0	0.0	0.0	0.00	0.00	0.00
1,700.0	0.00	0.00	1,700.0	0.0	0.0	0.0	0.00	0.00	0.00
1,725.0	0.00	0.00	1,725.0	0.0	0.0	0.0	0.00	0.00	0.00
1,750.0	0.00	0.00	1,750.0	0.0	0.0	0.0	0.00	0.00	0.00
1,775.0	0.00	0.00	1,775.0	0.0	0.0	0.0	0.00	0.00	0.00
1,800.0	0.00	0.00	1,800.0	0.0	0.0	0.0	0.00	0.00	0.00
1,825.0	0.00	0.00	1,825.0	0.0	0.0	0.0	0.00	0.00	0.00
1,850.0	0.00	0.00	1,850.0	0.0	0.0	0.0	0.00	0.00	0.00
1,875.0	0.00	0.00	1,875.0	0.0	0.0	0.0	0.00	0.00	0.00
1,900.0	0.00	0.00	1,900.0	0.0	0.0	0.0	0.00	0.00	0.00
1,925.0	0.00	0.00	1,925.0	0.0	0.0	0.0	0.00	0.00	0.00
1,950.0	0.00	0.00	1,950.0	0.0	0.0	0.0	0.00	0.00	0.00
1,975.0	0.00	0.00	1,975.0	0.0	0.0	0.0	0.00	0.00	0.00
2,000.0	0.00	0.00	2,000.0	0.0	0.0	0.0	0.00	0.00	0.00
2,025.0	0.00	0.00	2,025.0	0.0	0.0	0.0	0.00	0.00	0.00
2,050.0	0.00	0.00	2,050.0	0.0	0.0	0.0	0.00	0.00	0.00
2,075.0	0.00	0.00	2,075.0	0.0	0.0	0.0	0.00	0.00	0.00
2,100.0	0.00	0.00	2,100.0	0.0	0.0	0.0	0.00	0.00	0.00
2,125.0	0.00	0.00	2,125.0	0.0	0.0	0.0	0.00	0.00	0.00
2,150.0	0.00	0.00	2,150.0	0.0	0.0	0.0	0.00	0.00	0.00
2,175.0	0.00	0.00	2,175.0	0.0	0.0	0.0	0.00	0.00	0.00
2,200.0	0.00	0.00	2,200.0	0.0	0.0	0.0	0.00	0.00	0.00
2,225.0	0.00	0.00	2,225.0	0.0	0.0	0.0	0.00	0.00	0.00
2,250.0	0.00	0.00	2,250.0	0.0	0.0	0.0	0.00	0.00	0.00
2,275.0	0.00	0.00	2,275.0	0.0	0.0	0.0	0.00	0.00	0.00
2,300.0	0.00	0.00	2,300.0	0.0	0.0	0.0	0.00	0.00	0.00
2,325.0	0.00	0.00	2,325.0	0.0	0.0	0.0	0.00	0.00	0.00
2,350.0	0.00	0.00	2,350.0	0.0	0.0	0.0	0.00	0.00	0.00
2,375.0	0.00	0.00	2,375.0	0.0	0.0	0.0	0.00	0.00	0.00
2,400.0	0.00	0.00	2,400.0	0.0	0.0	0.0	0.00	0.00	0.00

SandRidge Energy

Survey Report

Company:	SandRidge Energy	Local Co-ordinate Reference:	Well Mutual 0780 2-8H
Project:	North Park Basin	TVD Reference:	WELL @ 8172.0usft (Original Well Elev)
Site:	T7N-R80W-S17	MD Reference:	WELL @ 8172.0usft (Original Well Elev)
Well:	Mutual 0780 2-8H	North Reference:	Grid
Wellbore:	Wellbore #1	Survey Calculation Method:	Minimum Curvature
Design:	Design #1	Database:	EDMProd

Planned Survey

Measured Depth (usft)	Inclination (°)	Azimuth (°)	Vertical Depth (usft)	+N/-S (usft)	+E/-W (usft)	Vertical Section (usft)	Dogleg Rate (°/100usft)	Build Rate (°/100usft)	Turn Rate (°/100usft)
2,425.0	0.00	0.00	2,425.0	0.0	0.0	0.0	0.00	0.00	0.00
2,450.0	0.00	0.00	2,450.0	0.0	0.0	0.0	0.00	0.00	0.00
2,475.0	0.00	0.00	2,475.0	0.0	0.0	0.0	0.00	0.00	0.00
2,500.0	0.00	0.00	2,500.0	0.0	0.0	0.0	0.00	0.00	0.00
2,525.0	0.00	0.00	2,525.0	0.0	0.0	0.0	0.00	0.00	0.00
2,550.0	0.00	0.00	2,550.0	0.0	0.0	0.0	0.00	0.00	0.00
2,575.0	0.00	0.00	2,575.0	0.0	0.0	0.0	0.00	0.00	0.00
2,600.0	0.00	0.00	2,600.0	0.0	0.0	0.0	0.00	0.00	0.00
2,625.0	0.00	0.00	2,625.0	0.0	0.0	0.0	0.00	0.00	0.00
2,650.0	0.00	0.00	2,650.0	0.0	0.0	0.0	0.00	0.00	0.00
2,675.0	0.00	0.00	2,675.0	0.0	0.0	0.0	0.00	0.00	0.00
2,700.0	0.00	0.00	2,700.0	0.0	0.0	0.0	0.00	0.00	0.00
2,725.0	0.00	0.00	2,725.0	0.0	0.0	0.0	0.00	0.00	0.00
2,750.0	0.00	0.00	2,750.0	0.0	0.0	0.0	0.00	0.00	0.00
2,775.0	0.00	0.00	2,775.0	0.0	0.0	0.0	0.00	0.00	0.00
2,800.0	0.00	0.00	2,800.0	0.0	0.0	0.0	0.00	0.00	0.00
2,825.0	0.00	0.00	2,825.0	0.0	0.0	0.0	0.00	0.00	0.00
2,850.0	0.00	0.00	2,850.0	0.0	0.0	0.0	0.00	0.00	0.00
2,875.0	0.00	0.00	2,875.0	0.0	0.0	0.0	0.00	0.00	0.00
2,900.0	0.00	0.00	2,900.0	0.0	0.0	0.0	0.00	0.00	0.00
2,925.0	0.00	0.00	2,925.0	0.0	0.0	0.0	0.00	0.00	0.00
2,950.0	0.00	0.00	2,950.0	0.0	0.0	0.0	0.00	0.00	0.00
2,975.0	0.00	0.00	2,975.0	0.0	0.0	0.0	0.00	0.00	0.00
3,000.0	0.00	0.00	3,000.0	0.0	0.0	0.0	0.00	0.00	0.00
3,025.0	0.00	0.00	3,025.0	0.0	0.0	0.0	0.00	0.00	0.00
3,050.0	0.00	0.00	3,050.0	0.0	0.0	0.0	0.00	0.00	0.00
3,075.0	0.00	0.00	3,075.0	0.0	0.0	0.0	0.00	0.00	0.00
3,100.0	0.00	0.00	3,100.0	0.0	0.0	0.0	0.00	0.00	0.00
3,125.0	0.00	0.00	3,125.0	0.0	0.0	0.0	0.00	0.00	0.00
3,150.0	0.00	0.00	3,150.0	0.0	0.0	0.0	0.00	0.00	0.00
3,175.0	0.00	0.00	3,175.0	0.0	0.0	0.0	0.00	0.00	0.00
3,200.0	0.00	0.00	3,200.0	0.0	0.0	0.0	0.00	0.00	0.00
3,225.0	0.00	0.00	3,225.0	0.0	0.0	0.0	0.00	0.00	0.00
3,250.0	0.00	0.00	3,250.0	0.0	0.0	0.0	0.00	0.00	0.00
3,275.0	0.00	0.00	3,275.0	0.0	0.0	0.0	0.00	0.00	0.00
3,300.0	0.00	0.00	3,300.0	0.0	0.0	0.0	0.00	0.00	0.00
3,325.0	0.00	0.00	3,325.0	0.0	0.0	0.0	0.00	0.00	0.00
3,350.0	0.00	0.00	3,350.0	0.0	0.0	0.0	0.00	0.00	0.00
3,375.0	0.00	0.00	3,375.0	0.0	0.0	0.0	0.00	0.00	0.00
3,400.0	0.00	0.00	3,400.0	0.0	0.0	0.0	0.00	0.00	0.00
3,425.0	0.00	0.00	3,425.0	0.0	0.0	0.0	0.00	0.00	0.00
3,450.0	0.00	0.00	3,450.0	0.0	0.0	0.0	0.00	0.00	0.00
3,475.0	0.00	0.00	3,475.0	0.0	0.0	0.0	0.00	0.00	0.00

SandRidge Energy

Survey Report

Company:	SandRidge Energy	Local Co-ordinate Reference:	Well Mutual 0780 2-8H
Project:	North Park Basin	TVD Reference:	WELL @ 8172.0usft (Original Well Elev)
Site:	T7N-R80W-S17	MD Reference:	WELL @ 8172.0usft (Original Well Elev)
Well:	Mutual 0780 2-8H	North Reference:	Grid
Wellbore:	Wellbore #1	Survey Calculation Method:	Minimum Curvature
Design:	Design #1	Database:	EDMPProd

Planned Survey

Measured Depth (usft)	Inclination (°)	Azimuth (°)	Vertical Depth (usft)	+N/-S (usft)	+E/-W (usft)	Vertical Section (usft)	Dogleg Rate (°/100usft)	Build Rate (°/100usft)	Turn Rate (°/100usft)
3,500.0	0.00	0.00	3,500.0	0.0	0.0	0.0	0.00	0.00	0.00
3,525.0	0.00	0.00	3,525.0	0.0	0.0	0.0	0.00	0.00	0.00
3,550.0	0.00	0.00	3,550.0	0.0	0.0	0.0	0.00	0.00	0.00
3,575.0	0.00	0.00	3,575.0	0.0	0.0	0.0	0.00	0.00	0.00
3,600.0	0.00	0.00	3,600.0	0.0	0.0	0.0	0.00	0.00	0.00
3,625.0	0.00	0.00	3,625.0	0.0	0.0	0.0	0.00	0.00	0.00
3,650.0	0.00	0.00	3,650.0	0.0	0.0	0.0	0.00	0.00	0.00
3,675.0	0.00	0.00	3,675.0	0.0	0.0	0.0	0.00	0.00	0.00
3,700.0	0.00	0.00	3,700.0	0.0	0.0	0.0	0.00	0.00	0.00
3,725.0	0.00	0.00	3,725.0	0.0	0.0	0.0	0.00	0.00	0.00
3,750.0	0.00	0.00	3,750.0	0.0	0.0	0.0	0.00	0.00	0.00
3,775.0	0.00	0.00	3,775.0	0.0	0.0	0.0	0.00	0.00	0.00
3,800.0	0.00	0.00	3,800.0	0.0	0.0	0.0	0.00	0.00	0.00
3,825.0	0.00	0.00	3,825.0	0.0	0.0	0.0	0.00	0.00	0.00
3,850.0	0.00	0.00	3,850.0	0.0	0.0	0.0	0.00	0.00	0.00
3,875.0	0.00	0.00	3,875.0	0.0	0.0	0.0	0.00	0.00	0.00
3,900.0	0.00	0.00	3,900.0	0.0	0.0	0.0	0.00	0.00	0.00
3,925.0	0.00	0.00	3,925.0	0.0	0.0	0.0	0.00	0.00	0.00
3,950.0	0.00	0.00	3,950.0	0.0	0.0	0.0	0.00	0.00	0.00
3,975.0	0.00	0.00	3,975.0	0.0	0.0	0.0	0.00	0.00	0.00
4,000.0	0.00	0.00	4,000.0	0.0	0.0	0.0	0.00	0.00	0.00
4,025.0	0.00	0.00	4,025.0	0.0	0.0	0.0	0.00	0.00	0.00
4,050.0	0.00	0.00	4,050.0	0.0	0.0	0.0	0.00	0.00	0.00
4,075.0	0.00	0.00	4,075.0	0.0	0.0	0.0	0.00	0.00	0.00
4,100.0	0.00	0.00	4,100.0	0.0	0.0	0.0	0.00	0.00	0.00
4,125.0	0.00	0.00	4,125.0	0.0	0.0	0.0	0.00	0.00	0.00
4,150.0	0.00	0.00	4,150.0	0.0	0.0	0.0	0.00	0.00	0.00
4,175.0	0.00	0.00	4,175.0	0.0	0.0	0.0	0.00	0.00	0.00
4,200.0	0.00	0.00	4,200.0	0.0	0.0	0.0	0.00	0.00	0.00
4,225.0	0.00	0.00	4,225.0	0.0	0.0	0.0	0.00	0.00	0.00
4,250.0	0.00	0.00	4,250.0	0.0	0.0	0.0	0.00	0.00	0.00
4,275.0	0.00	0.00	4,275.0	0.0	0.0	0.0	0.00	0.00	0.00
4,300.0	0.00	0.00	4,300.0	0.0	0.0	0.0	0.00	0.00	0.00
4,325.0	0.00	0.00	4,325.0	0.0	0.0	0.0	0.00	0.00	0.00
4,350.0	0.00	0.00	4,350.0	0.0	0.0	0.0	0.00	0.00	0.00
4,375.0	0.00	0.00	4,375.0	0.0	0.0	0.0	0.00	0.00	0.00
4,400.0	0.00	0.00	4,400.0	0.0	0.0	0.0	0.00	0.00	0.00
4,425.0	0.00	0.00	4,425.0	0.0	0.0	0.0	0.00	0.00	0.00
4,450.0	0.00	0.00	4,450.0	0.0	0.0	0.0	0.00	0.00	0.00
4,475.0	0.00	0.00	4,475.0	0.0	0.0	0.0	0.00	0.00	0.00
4,500.0	0.00	0.00	4,500.0	0.0	0.0	0.0	0.00	0.00	0.00
4,525.0	0.00	0.00	4,525.0	0.0	0.0	0.0	0.00	0.00	0.00
4,550.0	0.00	0.00	4,550.0	0.0	0.0	0.0	0.00	0.00	0.00
4,575.0	0.00	0.00	4,575.0	0.0	0.0	0.0	0.00	0.00	0.00

SandRidge Energy

Survey Report

Company:	SandRidge Energy	Local Co-ordinate Reference:	Well Mutual 0780 2-8H
Project:	North Park Basin	TVD Reference:	WELL @ 8172.0usft (Original Well Elev)
Site:	T7N-R80W-S17	MD Reference:	WELL @ 8172.0usft (Original Well Elev)
Well:	Mutual 0780 2-8H	North Reference:	Grid
Wellbore:	Wellbore #1	Survey Calculation Method:	Minimum Curvature
Design:	Design #1	Database:	EDMProd

Planned Survey

Measured Depth (usft)	Inclination (°)	Azimuth (°)	Vertical Depth (usft)	+N/-S (usft)	+E/-W (usft)	Vertical Section (usft)	Dogleg Rate (°/100usft)	Build Rate (°/100usft)	Turn Rate (°/100usft)
4,600.0	0.00	0.00	4,600.0	0.0	0.0	0.0	0.00	0.00	0.00
4,625.0	0.00	0.00	4,625.0	0.0	0.0	0.0	0.00	0.00	0.00
4,650.0	0.00	0.00	4,650.0	0.0	0.0	0.0	0.00	0.00	0.00
4,675.0	0.00	0.00	4,675.0	0.0	0.0	0.0	0.00	0.00	0.00
4,700.0	0.00	0.00	4,700.0	0.0	0.0	0.0	0.00	0.00	0.00
4,725.0	0.00	0.00	4,725.0	0.0	0.0	0.0	0.00	0.00	0.00
4,750.0	0.00	0.00	4,750.0	0.0	0.0	0.0	0.00	0.00	0.00
4,775.0	0.00	0.00	4,775.0	0.0	0.0	0.0	0.00	0.00	0.00
4,800.0	0.00	0.00	4,800.0	0.0	0.0	0.0	0.00	0.00	0.00
4,825.0	0.00	0.00	4,825.0	0.0	0.0	0.0	0.00	0.00	0.00
4,850.0	0.00	0.00	4,850.0	0.0	0.0	0.0	0.00	0.00	0.00
4,875.0	0.00	0.00	4,875.0	0.0	0.0	0.0	0.00	0.00	0.00
4,900.0	0.00	0.00	4,900.0	0.0	0.0	0.0	0.00	0.00	0.00
4,925.0	0.00	0.00	4,925.0	0.0	0.0	0.0	0.00	0.00	0.00
4,950.0	0.00	0.00	4,950.0	0.0	0.0	0.0	0.00	0.00	0.00
4,975.0	0.00	0.00	4,975.0	0.0	0.0	0.0	0.00	0.00	0.00
5,000.0	0.00	0.00	5,000.0	0.0	0.0	0.0	0.00	0.00	0.00
5,025.0	0.50	270.00	5,025.0	0.0	-0.1	0.0	2.00	2.00	0.00
5,050.0	1.00	270.00	5,050.0	0.0	-0.4	0.0	2.00	2.00	0.00
5,075.0	1.50	270.00	5,075.0	0.0	-1.0	0.1	2.00	2.00	0.00
5,100.0	2.00	270.00	5,100.0	0.0	-1.7	0.1	2.00	2.00	0.00
5,125.0	2.50	270.00	5,125.0	0.0	-2.7	0.1	2.00	2.00	0.00
5,150.0	3.00	270.00	5,149.9	0.0	-3.9	0.2	2.00	2.00	0.00
5,175.0	3.50	270.00	5,174.9	0.0	-5.3	0.3	2.00	2.00	0.00
5,200.0	4.00	270.00	5,199.8	0.0	-7.0	0.4	2.00	2.00	0.00
5,225.0	4.50	270.00	5,224.8	0.0	-8.8	0.5	2.00	2.00	0.00
5,250.0	5.00	270.00	5,249.7	0.0	-10.9	0.6	2.00	2.00	0.00
5,275.0	5.50	270.00	5,274.6	0.0	-13.2	0.7	2.00	2.00	0.00
5,300.0	6.00	270.00	5,299.5	0.0	-15.7	0.8	2.00	2.00	0.00
5,325.0	6.50	270.00	5,324.3	0.0	-18.4	0.9	2.00	2.00	0.00
5,350.0	7.00	270.00	5,349.1	0.0	-21.4	1.1	2.00	2.00	0.00
5,375.0	7.50	270.00	5,373.9	0.0	-24.5	1.3	2.00	2.00	0.00
5,400.0	8.00	270.00	5,398.7	0.0	-27.9	1.4	2.00	2.00	0.00
5,425.0	8.50	270.00	5,423.4	0.0	-31.5	1.6	2.00	2.00	0.00
5,450.0	9.00	270.00	5,448.2	0.0	-35.3	1.8	2.00	2.00	0.00
5,475.0	9.50	270.00	5,472.8	0.0	-39.3	2.0	2.00	2.00	0.00
5,477.5	9.55	270.00	5,475.3	0.0	-39.7	2.0	2.00	2.00	0.00
5,500.0	9.55	270.00	5,497.5	0.0	-43.4	2.2	0.00	0.00	0.00
5,525.0	9.55	270.00	5,522.1	0.0	-47.6	2.4	0.00	0.00	0.00
5,550.0	9.55	270.00	5,546.8	0.0	-51.7	2.7	0.00	0.00	0.00
5,575.0	9.55	270.00	5,571.4	0.0	-55.9	2.9	0.00	0.00	0.00
5,600.0	9.55	270.00	5,596.1	0.0	-60.0	3.1	0.00	0.00	0.00
5,625.0	9.55	270.00	5,620.7	0.0	-64.2	3.3	0.00	0.00	0.00

SandRidge Energy

Survey Report

Company:	SandRidge Energy	Local Co-ordinate Reference:	Well Mutual 0780 2-8H
Project:	North Park Basin	TVD Reference:	WELL @ 8172.0usft (Original Well Elev)
Site:	T7N-R80W-S17	MD Reference:	WELL @ 8172.0usft (Original Well Elev)
Well:	Mutual 0780 2-8H	North Reference:	Grid
Wellbore:	Wellbore #1	Survey Calculation Method:	Minimum Curvature
Design:	Design #1	Database:	EDMProd

Planned Survey

Measured Depth (usft)	Inclination (°)	Azimuth (°)	Vertical Depth (usft)	+N/-S (usft)	+E/-W (usft)	Vertical Section (usft)	Dogleg Rate (°/100usft)	Build Rate (°/100usft)	Turn Rate (°/100usft)
5,650.0	9.55	270.00	5,645.4	0.0	-68.3	3.5	0.00	0.00	0.00
5,675.0	9.55	270.00	5,670.1	0.0	-72.5	3.7	0.00	0.00	0.00
5,700.0	9.55	270.00	5,694.7	0.0	-76.6	3.9	0.00	0.00	0.00
5,725.0	9.55	270.00	5,719.4	0.0	-80.8	4.2	0.00	0.00	0.00
5,750.0	9.55	270.00	5,744.0	0.0	-84.9	4.4	0.00	0.00	0.00
5,775.0	9.55	270.00	5,768.7	0.0	-89.1	4.6	0.00	0.00	0.00
5,800.0	9.55	270.00	5,793.3	0.0	-93.2	4.8	0.00	0.00	0.00
5,825.0	9.55	270.00	5,818.0	0.0	-97.4	5.0	0.00	0.00	0.00
5,850.0	9.55	270.00	5,842.6	0.0	-101.5	5.2	0.00	0.00	0.00
5,875.0	9.55	270.00	5,867.3	0.0	-105.6	5.4	0.00	0.00	0.00
5,900.0	9.55	270.00	5,891.9	0.0	-109.8	5.6	0.00	0.00	0.00
5,925.0	9.55	270.00	5,916.6	0.0	-113.9	5.9	0.00	0.00	0.00
5,950.0	9.55	270.00	5,941.2	0.0	-118.1	6.1	0.00	0.00	0.00
5,975.0	9.55	270.00	5,965.9	0.0	-122.2	6.3	0.00	0.00	0.00
6,000.0	9.55	270.00	5,990.6	0.0	-126.4	6.5	0.00	0.00	0.00
6,025.0	9.55	270.00	6,015.2	0.0	-130.5	6.7	0.00	0.00	0.00
6,050.0	9.55	270.00	6,039.9	0.0	-134.7	6.9	0.00	0.00	0.00
6,075.0	9.55	270.00	6,064.5	0.0	-138.8	7.1	0.00	0.00	0.00
6,100.0	9.55	270.00	6,089.2	0.0	-143.0	7.3	0.00	0.00	0.00
6,125.0	9.55	270.00	6,113.8	0.0	-147.1	7.6	0.00	0.00	0.00
6,150.0	9.55	270.00	6,138.5	0.0	-151.3	7.8	0.00	0.00	0.00
6,175.0	9.55	270.00	6,163.1	0.0	-155.4	8.0	0.00	0.00	0.00
6,200.0	9.55	270.00	6,187.8	0.0	-159.6	8.2	0.00	0.00	0.00
6,225.0	9.55	270.00	6,212.4	0.0	-163.7	8.4	0.00	0.00	0.00
6,250.0	9.55	270.00	6,237.1	0.0	-167.9	8.6	0.00	0.00	0.00
6,275.0	9.55	270.00	6,261.7	0.0	-172.0	8.8	0.00	0.00	0.00
6,300.0	9.55	270.00	6,286.4	0.0	-176.2	9.1	0.00	0.00	0.00
6,325.0	9.55	270.00	6,311.0	0.0	-180.3	9.3	0.00	0.00	0.00
6,350.0	9.55	270.00	6,335.7	0.0	-184.5	9.5	0.00	0.00	0.00
6,375.0	9.55	270.00	6,360.4	0.0	-188.6	9.7	0.00	0.00	0.00
6,400.0	9.55	270.00	6,385.0	0.0	-192.7	9.9	0.00	0.00	0.00
6,425.0	9.55	270.00	6,409.7	0.0	-196.9	10.1	0.00	0.00	0.00
6,450.0	9.55	270.00	6,434.3	0.0	-201.0	10.3	0.00	0.00	0.00
6,467.8	9.55	270.00	6,451.9	0.0	-204.0	10.5	0.00	0.00	0.00
6,475.0	9.51	274.32	6,459.0	0.0	-205.2	10.6	10.00	-0.58	60.32
6,500.0	9.78	289.20	6,483.6	0.9	-209.2	11.7	10.00	1.08	59.52
6,525.0	10.64	302.49	6,508.2	2.8	-213.2	13.8	10.00	3.44	53.14
6,550.0	11.96	313.34	6,532.7	5.9	-217.0	17.0	10.00	5.30	43.40
6,575.0	13.62	321.83	6,557.1	9.9	-220.7	21.3	10.00	6.62	33.95
6,600.0	15.50	328.40	6,581.3	15.1	-224.3	26.6	10.00	7.52	26.30
6,625.0	17.53	333.54	6,605.3	21.3	-227.7	33.0	10.00	8.13	20.54
6,650.0	19.67	337.61	6,629.0	28.6	-231.0	40.4	10.00	8.55	16.30
6,675.0	21.88	340.91	6,652.4	36.9	-234.1	48.9	10.00	8.85	13.17

SandRidge Energy

Survey Report

Company:	SandRidge Energy	Local Co-ordinate Reference:	Well Mutual 0780 2-8H
Project:	North Park Basin	TVD Reference:	WELL @ 8172.0usft (Original Well Elev)
Site:	T7N-R80W-S17	MD Reference:	WELL @ 8172.0usft (Original Well Elev)
Well:	Mutual 0780 2-8H	North Reference:	Grid
Wellbore:	Wellbore #1	Survey Calculation Method:	Minimum Curvature
Design:	Design #1	Database:	EDMProd

Planned Survey

Measured Depth (usft)	Inclination (°)	Azimuth (°)	Vertical Depth (usft)	+N/-S (usft)	+E/-W (usft)	Vertical Section (usft)	Dogleg Rate (°/100usft)	Build Rate (°/100usft)	Turn Rate (°/100usft)
6,700.0	24.14	343.61	6,675.4	46.2	-237.1	58.3	10.00	9.06	10.84
6,725.0	26.45	345.88	6,698.0	56.5	-239.9	68.8	10.00	9.22	9.06
6,750.0	28.78	347.80	6,720.1	67.8	-242.5	80.2	10.00	9.34	7.70
6,775.0	31.14	349.46	6,741.8	80.0	-245.0	92.5	10.00	9.44	6.63
6,800.0	33.52	350.91	6,762.9	93.2	-247.3	105.8	10.00	9.51	5.78
6,825.0	35.91	352.18	6,783.5	107.3	-249.4	120.0	10.00	9.57	5.10
6,850.0	38.32	353.32	6,803.4	122.2	-251.3	135.0	10.00	9.62	4.54
6,875.0	40.73	354.34	6,822.7	138.1	-253.0	150.9	10.00	9.66	4.08
6,900.0	43.16	355.26	6,841.3	154.7	-254.5	167.6	10.00	9.69	3.70
6,925.0	45.58	356.11	6,859.1	172.1	-255.8	185.0	10.00	9.72	3.38
6,950.0	48.02	356.88	6,876.2	190.3	-256.9	203.3	10.00	9.74	3.11
6,975.0	50.46	357.60	6,892.6	209.2	-257.8	222.2	10.00	9.76	2.88
7,000.0	52.90	358.27	6,908.1	228.8	-258.5	241.8	10.00	9.78	2.68
7,025.0	55.35	358.90	6,922.7	249.1	-259.0	262.1	10.00	9.79	2.52
7,050.0	57.80	359.50	6,936.5	269.9	-259.3	282.9	10.00	9.80	2.37
7,072.4	60.00	0.00	6,948.1	289.1	-259.4	302.1	10.00	9.81	2.25
7,075.0	60.00	0.00	6,949.4	291.4	-259.4	304.3	0.00	0.00	0.00
7,100.0	60.00	0.00	6,961.9	313.0	-259.4	325.9	0.00	0.00	0.00
7,125.0	60.00	0.00	6,974.4	334.7	-259.4	347.6	0.00	0.00	0.00
7,150.0	60.00	0.00	6,986.9	356.3	-259.4	369.2	0.00	0.00	0.00
7,175.0	60.00	0.00	6,999.4	378.0	-259.4	390.8	0.00	0.00	0.00
7,200.0	60.00	0.00	7,011.9	399.6	-259.4	412.4	0.00	0.00	0.00
7,222.4	60.00	0.00	7,023.1	419.0	-259.4	431.8	0.00	0.00	0.00
7,225.0	60.26	0.00	7,024.3	421.3	-259.4	434.1	10.00	10.00	0.00
7,250.0	62.76	0.00	7,036.3	443.3	-259.4	456.0	10.00	10.00	0.00
7,275.0	65.26	0.00	7,047.2	465.7	-259.4	478.4	10.00	10.00	0.00
7,300.0	67.76	0.00	7,057.2	488.6	-259.4	501.3	10.00	10.00	0.00
7,325.0	70.26	0.00	7,066.1	512.0	-259.4	524.6	10.00	10.00	0.00
7,350.0	72.76	0.00	7,074.1	535.7	-259.4	548.3	10.00	10.00	0.00
7,375.0	75.26	0.00	7,081.0	559.7	-259.4	572.3	10.00	10.00	0.00
7,400.0	77.76	0.00	7,086.8	584.0	-259.4	596.6	10.00	10.00	0.00
7,425.0	80.26	0.00	7,091.6	608.6	-259.4	621.1	10.00	10.00	0.00
7,450.0	82.76	0.00	7,095.2	633.3	-259.4	645.8	10.00	10.00	0.00
7,475.0	85.26	0.00	7,097.9	658.2	-259.4	670.6	10.00	10.00	0.00
7,500.0	87.76	0.00	7,099.4	683.1	-259.4	695.5	10.00	10.00	0.00
7,522.4	90.00	0.00	7,099.8	705.5	-259.4	717.9	10.00	10.00	0.00
7,525.0	90.00	0.00	7,099.8	708.1	-259.4	720.5	0.00	0.00	0.00
7,550.0	90.00	0.00	7,099.8	733.1	-259.4	745.5	0.00	0.00	0.00
7,575.0	90.00	0.00	7,099.8	758.1	-259.4	770.4	0.00	0.00	0.00
7,600.0	90.00	0.00	7,099.8	783.1	-259.4	795.4	0.00	0.00	0.00
7,625.0	90.00	0.00	7,099.8	808.1	-259.4	820.4	0.00	0.00	0.00
7,650.0	90.00	0.00	7,099.8	833.1	-259.4	845.3	0.00	0.00	0.00
7,675.0	90.00	0.00	7,099.8	858.1	-259.4	870.3	0.00	0.00	0.00
7,700.0	90.00	0.00	7,099.8	883.1	-259.4	895.3	0.00	0.00	0.00

SandRidge Energy

Survey Report

Company:	SandRidge Energy	Local Co-ordinate Reference:	Well Mutual 0780 2-8H
Project:	North Park Basin	TVD Reference:	WELL @ 8172.0usft (Original Well Elev)
Site:	T7N-R80W-S17	MD Reference:	WELL @ 8172.0usft (Original Well Elev)
Well:	Mutual 0780 2-8H	North Reference:	Grid
Wellbore:	Wellbore #1	Survey Calculation Method:	Minimum Curvature
Design:	Design #1	Database:	EDMProd

Planned Survey

Measured Depth (usft)	Inclination (°)	Azimuth (°)	Vertical Depth (usft)	+N/-S (usft)	+E/-W (usft)	Vertical Section (usft)	Dogleg Rate (°/100usft)	Build Rate (°/100usft)	Turn Rate (°/100usft)
7,725.0	90.00	0.00	7,099.8	908.1	-259.4	920.2	0.00	0.00	0.00
7,750.0	90.00	0.00	7,099.8	933.1	-259.4	945.2	0.00	0.00	0.00
7,775.0	90.00	0.00	7,099.8	958.1	-259.4	970.2	0.00	0.00	0.00
7,800.0	90.00	0.00	7,099.8	983.1	-259.4	995.1	0.00	0.00	0.00
7,825.0	90.00	0.00	7,099.8	1,008.1	-259.4	1,020.1	0.00	0.00	0.00
7,850.0	90.00	0.00	7,099.8	1,033.1	-259.4	1,045.1	0.00	0.00	0.00
7,875.0	90.00	0.00	7,099.8	1,058.1	-259.4	1,070.0	0.00	0.00	0.00
7,900.0	90.00	0.00	7,099.8	1,083.1	-259.4	1,095.0	0.00	0.00	0.00
7,925.0	90.00	0.00	7,099.8	1,108.1	-259.4	1,120.0	0.00	0.00	0.00
7,950.0	90.00	0.00	7,099.8	1,133.1	-259.4	1,144.9	0.00	0.00	0.00
7,975.0	90.00	0.00	7,099.8	1,158.1	-259.4	1,169.9	0.00	0.00	0.00
8,000.0	90.00	0.00	7,099.8	1,183.1	-259.4	1,194.9	0.00	0.00	0.00
8,025.0	90.00	0.00	7,099.8	1,208.1	-259.4	1,219.8	0.00	0.00	0.00
8,050.0	90.00	0.00	7,099.8	1,233.1	-259.4	1,244.8	0.00	0.00	0.00
8,075.0	90.00	0.00	7,099.8	1,258.1	-259.4	1,269.8	0.00	0.00	0.00
8,100.0	90.00	0.00	7,099.8	1,283.1	-259.4	1,294.7	0.00	0.00	0.00
8,125.0	90.00	0.00	7,099.8	1,308.1	-259.4	1,319.7	0.00	0.00	0.00
8,150.0	90.00	0.00	7,099.8	1,333.1	-259.4	1,344.7	0.00	0.00	0.00
8,175.0	90.00	0.00	7,099.8	1,358.1	-259.3	1,369.6	0.00	0.00	0.00
8,200.0	90.00	0.00	7,099.8	1,383.1	-259.3	1,394.6	0.00	0.00	0.00
8,225.0	90.00	0.00	7,099.8	1,408.1	-259.3	1,419.6	0.00	0.00	0.00
8,250.0	90.00	0.00	7,099.8	1,433.1	-259.3	1,444.5	0.00	0.00	0.00
8,275.0	90.00	0.00	7,099.8	1,458.1	-259.3	1,469.5	0.00	0.00	0.00
8,300.0	90.00	0.00	7,099.8	1,483.1	-259.3	1,494.5	0.00	0.00	0.00
8,325.0	90.00	0.00	7,099.8	1,508.1	-259.3	1,519.4	0.00	0.00	0.00
8,350.0	90.00	0.00	7,099.8	1,533.1	-259.3	1,544.4	0.00	0.00	0.00
8,375.0	90.00	0.00	7,099.8	1,558.1	-259.3	1,569.4	0.00	0.00	0.00
8,400.0	90.00	0.00	7,099.8	1,583.1	-259.3	1,594.3	0.00	0.00	0.00
8,425.0	90.00	0.00	7,099.8	1,608.1	-259.3	1,619.3	0.00	0.00	0.00
8,450.0	90.00	0.00	7,099.8	1,633.1	-259.3	1,644.3	0.00	0.00	0.00
8,475.0	90.00	0.00	7,099.8	1,658.1	-259.3	1,669.2	0.00	0.00	0.00
8,500.0	90.00	0.00	7,099.8	1,683.1	-259.3	1,694.2	0.00	0.00	0.00
8,525.0	90.00	0.00	7,099.8	1,708.1	-259.3	1,719.2	0.00	0.00	0.00
8,550.0	90.00	0.00	7,099.8	1,733.1	-259.3	1,744.1	0.00	0.00	0.00
8,575.0	90.00	0.00	7,099.8	1,758.1	-259.3	1,769.1	0.00	0.00	0.00
8,600.0	90.00	0.00	7,099.8	1,783.1	-259.3	1,794.1	0.00	0.00	0.00
8,625.0	90.00	0.00	7,099.8	1,808.1	-259.3	1,819.0	0.00	0.00	0.00
8,650.0	90.00	0.00	7,099.8	1,833.1	-259.3	1,844.0	0.00	0.00	0.00
8,675.0	90.00	0.00	7,099.8	1,858.1	-259.3	1,869.0	0.00	0.00	0.00
8,700.0	90.00	0.00	7,099.8	1,883.1	-259.3	1,893.9	0.00	0.00	0.00
8,725.0	90.00	0.00	7,099.8	1,908.1	-259.3	1,918.9	0.00	0.00	0.00
8,750.0	90.00	0.00	7,099.8	1,933.1	-259.3	1,943.9	0.00	0.00	0.00
8,775.0	90.00	0.00	7,099.8	1,958.1	-259.3	1,968.8	0.00	0.00	0.00

SandRidge Energy

Survey Report

Company:	SandRidge Energy	Local Co-ordinate Reference:	Well Mutual 0780 2-8H
Project:	North Park Basin	TVD Reference:	WELL @ 8172.0usft (Original Well Elev)
Site:	T7N-R80W-S17	MD Reference:	WELL @ 8172.0usft (Original Well Elev)
Well:	Mutual 0780 2-8H	North Reference:	Grid
Wellbore:	Wellbore #1	Survey Calculation Method:	Minimum Curvature
Design:	Design #1	Database:	EDMProd

Planned Survey

Measured Depth (usft)	Inclination (°)	Azimuth (°)	Vertical Depth (usft)	+N/-S (usft)	+E/-W (usft)	Vertical Section (usft)	Dogleg Rate (°/100usft)	Build Rate (°/100usft)	Turn Rate (°/100usft)
8,800.0	90.00	0.00	7,099.8	1,983.1	-259.3	1,993.8	0.00	0.00	0.00
8,825.0	90.00	0.00	7,099.8	2,008.1	-259.3	2,018.8	0.00	0.00	0.00
8,850.0	90.00	0.00	7,099.8	2,033.1	-259.3	2,043.7	0.00	0.00	0.00
8,875.0	90.00	0.00	7,099.8	2,058.1	-259.3	2,068.7	0.00	0.00	0.00
8,900.0	90.00	0.00	7,099.8	2,083.1	-259.3	2,093.7	0.00	0.00	0.00
8,925.0	90.00	0.00	7,099.8	2,108.1	-259.3	2,118.6	0.00	0.00	0.00
8,950.0	90.00	0.00	7,099.8	2,133.1	-259.3	2,143.6	0.00	0.00	0.00
8,975.0	90.00	0.00	7,099.8	2,158.1	-259.3	2,168.6	0.00	0.00	0.00
9,000.0	90.00	0.00	7,099.8	2,183.1	-259.3	2,193.5	0.00	0.00	0.00
9,025.0	90.00	0.00	7,099.8	2,208.1	-259.3	2,218.5	0.00	0.00	0.00
9,050.0	90.00	0.00	7,099.8	2,233.1	-259.3	2,243.5	0.00	0.00	0.00
9,075.0	90.00	0.00	7,099.8	2,258.1	-259.3	2,268.4	0.00	0.00	0.00
9,100.0	90.00	0.00	7,099.8	2,283.1	-259.3	2,293.4	0.00	0.00	0.00
9,125.0	90.00	0.00	7,099.8	2,308.1	-259.3	2,318.4	0.00	0.00	0.00
9,150.0	90.00	0.00	7,099.8	2,333.1	-259.3	2,343.3	0.00	0.00	0.00
9,175.0	90.00	0.00	7,099.8	2,358.1	-259.3	2,368.3	0.00	0.00	0.00
9,200.0	90.00	0.00	7,099.8	2,383.1	-259.3	2,393.3	0.00	0.00	0.00
9,225.0	90.00	0.00	7,099.8	2,408.1	-259.3	2,418.2	0.00	0.00	0.00
9,250.0	90.00	0.00	7,099.8	2,433.1	-259.3	2,443.2	0.00	0.00	0.00
9,275.0	90.00	0.00	7,099.8	2,458.1	-259.3	2,468.2	0.00	0.00	0.00
9,300.0	90.00	0.00	7,099.8	2,483.1	-259.3	2,493.2	0.00	0.00	0.00
9,325.0	90.00	0.00	7,099.8	2,508.1	-259.3	2,518.1	0.00	0.00	0.00
9,350.0	90.00	0.00	7,099.8	2,533.1	-259.3	2,543.1	0.00	0.00	0.00
9,375.0	90.00	0.00	7,099.8	2,558.1	-259.3	2,568.1	0.00	0.00	0.00
9,400.0	90.00	0.00	7,099.8	2,583.1	-259.3	2,593.0	0.00	0.00	0.00
9,425.0	90.00	0.00	7,099.8	2,608.1	-259.3	2,618.0	0.00	0.00	0.00
9,450.0	90.00	0.00	7,099.8	2,633.1	-259.3	2,643.0	0.00	0.00	0.00
9,475.0	90.00	0.00	7,099.8	2,658.1	-259.3	2,667.9	0.00	0.00	0.00
9,500.0	90.00	0.00	7,099.8	2,683.1	-259.3	2,692.9	0.00	0.00	0.00
9,525.0	90.00	0.00	7,099.8	2,708.1	-259.3	2,717.9	0.00	0.00	0.00
9,550.0	90.00	0.00	7,099.8	2,733.1	-259.3	2,742.8	0.00	0.00	0.00
9,575.0	90.00	0.00	7,099.8	2,758.1	-259.3	2,767.8	0.00	0.00	0.00
9,600.0	90.00	0.00	7,099.8	2,783.1	-259.3	2,792.8	0.00	0.00	0.00
9,625.0	90.00	0.00	7,099.8	2,808.1	-259.3	2,817.7	0.00	0.00	0.00
9,650.0	90.00	0.00	7,099.8	2,833.1	-259.3	2,842.7	0.00	0.00	0.00
9,675.0	90.00	0.00	7,099.8	2,858.1	-259.3	2,867.7	0.00	0.00	0.00
9,700.0	90.00	0.00	7,099.8	2,883.1	-259.3	2,892.6	0.00	0.00	0.00
9,725.0	90.00	0.00	7,099.8	2,908.1	-259.3	2,917.6	0.00	0.00	0.00
9,750.0	90.00	0.00	7,099.8	2,933.1	-259.3	2,942.6	0.00	0.00	0.00
9,775.0	90.00	0.00	7,099.8	2,958.1	-259.3	2,967.5	0.00	0.00	0.00
9,800.0	90.00	0.00	7,099.8	2,983.1	-259.3	2,992.5	0.00	0.00	0.00
9,825.0	90.00	0.00	7,099.8	3,008.1	-259.3	3,017.5	0.00	0.00	0.00
9,850.0	90.00	0.00	7,099.8	3,033.1	-259.3	3,042.4	0.00	0.00	0.00

SandRidge Energy

Survey Report

Company:	SandRidge Energy	Local Co-ordinate Reference:	Well Mutual 0780 2-8H
Project:	North Park Basin	TVD Reference:	WELL @ 8172.0usft (Original Well Elev)
Site:	T7N-R80W-S17	MD Reference:	WELL @ 8172.0usft (Original Well Elev)
Well:	Mutual 0780 2-8H	North Reference:	Grid
Wellbore:	Wellbore #1	Survey Calculation Method:	Minimum Curvature
Design:	Design #1	Database:	EDMProd

Planned Survey

Measured Depth (usft)	Inclination (°)	Azimuth (°)	Vertical Depth (usft)	+N/-S (usft)	+E/-W (usft)	Vertical Section (usft)	Dogleg Rate (°/100usft)	Build Rate (°/100usft)	Turn Rate (°/100usft)
9,875.0	90.00	0.00	7,099.8	3,058.1	-259.3	3,067.4	0.00	0.00	0.00
9,900.0	90.00	0.00	7,099.8	3,083.1	-259.3	3,092.4	0.00	0.00	0.00
9,925.0	90.00	0.00	7,099.8	3,108.1	-259.3	3,117.3	0.00	0.00	0.00
9,950.0	90.00	0.00	7,099.8	3,133.1	-259.3	3,142.3	0.00	0.00	0.00
9,975.0	90.00	0.00	7,099.8	3,158.1	-259.3	3,167.3	0.00	0.00	0.00
10,000.0	90.00	0.00	7,099.8	3,183.1	-259.3	3,192.2	0.00	0.00	0.00
10,025.0	90.00	0.00	7,099.8	3,208.1	-259.3	3,217.2	0.00	0.00	0.00
10,050.0	90.00	0.00	7,099.8	3,233.1	-259.3	3,242.2	0.00	0.00	0.00
10,075.0	90.00	0.00	7,099.8	3,258.1	-259.3	3,267.1	0.00	0.00	0.00
10,100.0	90.00	0.00	7,099.8	3,283.1	-259.3	3,292.1	0.00	0.00	0.00
10,125.0	90.00	0.00	7,099.8	3,308.1	-259.3	3,317.1	0.00	0.00	0.00
10,150.0	90.00	0.00	7,099.8	3,333.1	-259.3	3,342.0	0.00	0.00	0.00
10,175.0	90.00	0.00	7,099.8	3,358.1	-259.3	3,367.0	0.00	0.00	0.00
10,200.0	90.00	0.00	7,099.8	3,383.1	-259.3	3,392.0	0.00	0.00	0.00
10,225.0	90.00	0.00	7,099.8	3,408.1	-259.3	3,416.9	0.00	0.00	0.00
10,250.0	90.00	0.00	7,099.8	3,433.1	-259.3	3,441.9	0.00	0.00	0.00
10,275.0	90.00	0.00	7,099.8	3,458.1	-259.3	3,466.9	0.00	0.00	0.00
10,300.0	90.00	0.00	7,099.8	3,483.1	-259.3	3,491.8	0.00	0.00	0.00
10,325.0	90.00	0.00	7,099.8	3,508.1	-259.3	3,516.8	0.00	0.00	0.00
10,350.0	90.00	0.00	7,099.8	3,533.1	-259.3	3,541.8	0.00	0.00	0.00
10,375.0	90.00	0.00	7,099.8	3,558.1	-259.3	3,566.7	0.00	0.00	0.00
10,400.0	90.00	0.00	7,099.8	3,583.1	-259.3	3,591.7	0.00	0.00	0.00
10,425.0	90.00	0.00	7,099.8	3,608.1	-259.3	3,616.7	0.00	0.00	0.00
10,450.0	90.00	0.00	7,099.8	3,633.1	-259.3	3,641.6	0.00	0.00	0.00
10,475.0	90.00	0.00	7,099.8	3,658.1	-259.3	3,666.6	0.00	0.00	0.00
10,500.0	90.00	0.00	7,099.8	3,683.1	-259.3	3,691.6	0.00	0.00	0.00
10,525.0	90.00	0.00	7,099.8	3,708.1	-259.3	3,716.5	0.00	0.00	0.00
10,550.0	90.00	0.00	7,099.8	3,733.1	-259.3	3,741.5	0.00	0.00	0.00
10,575.0	90.00	0.00	7,099.8	3,758.1	-259.3	3,766.5	0.00	0.00	0.00
10,600.0	90.00	0.00	7,099.8	3,783.1	-259.3	3,791.4	0.00	0.00	0.00
10,625.0	90.00	0.00	7,099.8	3,808.1	-259.3	3,816.4	0.00	0.00	0.00
10,650.0	90.00	0.00	7,099.8	3,833.1	-259.3	3,841.4	0.00	0.00	0.00
10,675.0	90.00	0.00	7,099.8	3,858.1	-259.3	3,866.3	0.00	0.00	0.00
10,700.0	90.00	0.00	7,099.8	3,883.1	-259.3	3,891.3	0.00	0.00	0.00
10,725.0	90.00	0.00	7,099.8	3,908.1	-259.3	3,916.3	0.00	0.00	0.00
10,750.0	90.00	0.00	7,099.8	3,933.1	-259.3	3,941.2	0.00	0.00	0.00
10,775.0	90.00	0.00	7,099.8	3,958.1	-259.3	3,966.2	0.00	0.00	0.00
10,800.0	90.00	0.00	7,099.8	3,983.1	-259.3	3,991.2	0.00	0.00	0.00
10,825.0	90.00	0.00	7,099.8	4,008.1	-259.3	4,016.1	0.00	0.00	0.00
10,850.0	90.00	0.00	7,099.8	4,033.1	-259.3	4,041.1	0.00	0.00	0.00
10,875.0	90.00	0.00	7,099.8	4,058.1	-259.3	4,066.1	0.00	0.00	0.00
10,900.0	90.00	0.00	7,099.8	4,083.1	-259.3	4,091.0	0.00	0.00	0.00
10,925.0	90.00	0.00	7,099.8	4,108.1	-259.3	4,116.0	0.00	0.00	0.00
10,950.0	90.00	0.00	7,099.8	4,133.1	-259.3	4,141.0	0.00	0.00	0.00

SandRidge Energy

Survey Report

Company:	SandRidge Energy	Local Co-ordinate Reference:	Well Mutual 0780 2-8H
Project:	North Park Basin	TVD Reference:	WELL @ 8172.0usft (Original Well Elev)
Site:	T7N-R80W-S17	MD Reference:	WELL @ 8172.0usft (Original Well Elev)
Well:	Mutual 0780 2-8H	North Reference:	Grid
Wellbore:	Wellbore #1	Survey Calculation Method:	Minimum Curvature
Design:	Design #1	Database:	EDMProd

Planned Survey

Measured Depth (usft)	Inclination (°)	Azimuth (°)	Vertical Depth (usft)	+N/-S (usft)	+E/-W (usft)	Vertical Section (usft)	Dogleg Rate (°/100usft)	Build Rate (°/100usft)	Turn Rate (°/100usft)
10,975.0	90.00	0.00	7,099.8	4,158.1	-259.3	4,165.9	0.00	0.00	0.00
11,000.0	90.00	0.00	7,099.8	4,183.1	-259.3	4,190.9	0.00	0.00	0.00
11,025.0	90.00	0.00	7,099.8	4,208.1	-259.3	4,215.9	0.00	0.00	0.00
11,050.0	90.00	0.00	7,099.8	4,233.1	-259.3	4,240.8	0.00	0.00	0.00
11,075.0	90.00	0.00	7,099.8	4,258.1	-259.3	4,265.8	0.00	0.00	0.00
11,100.0	90.00	0.00	7,099.8	4,283.1	-259.3	4,290.8	0.00	0.00	0.00
11,125.0	90.00	0.00	7,099.8	4,308.1	-259.3	4,315.7	0.00	0.00	0.00
11,150.0	90.00	0.00	7,099.8	4,333.1	-259.3	4,340.7	0.00	0.00	0.00
11,175.0	90.00	0.00	7,099.8	4,358.1	-259.3	4,365.7	0.00	0.00	0.00
11,200.0	90.00	0.00	7,099.8	4,383.1	-259.3	4,390.6	0.00	0.00	0.00
11,225.0	90.00	0.00	7,099.8	4,408.1	-259.3	4,415.6	0.00	0.00	0.00
11,250.0	90.00	0.00	7,099.8	4,433.1	-259.3	4,440.6	0.00	0.00	0.00
11,275.0	90.00	0.00	7,099.8	4,458.1	-259.3	4,465.5	0.00	0.00	0.00
11,300.0	90.00	0.00	7,099.8	4,483.1	-259.3	4,490.5	0.00	0.00	0.00
11,325.0	90.00	0.00	7,099.8	4,508.1	-259.3	4,515.5	0.00	0.00	0.00
11,350.0	90.00	0.00	7,099.8	4,533.1	-259.3	4,540.4	0.00	0.00	0.00
11,375.0	90.00	0.00	7,099.8	4,558.1	-259.3	4,565.4	0.00	0.00	0.00
11,400.0	90.00	0.00	7,099.8	4,583.1	-259.3	4,590.4	0.00	0.00	0.00
11,425.0	90.00	0.00	7,099.8	4,608.1	-259.3	4,615.3	0.00	0.00	0.00
11,450.0	90.00	0.00	7,099.8	4,633.1	-259.3	4,640.3	0.00	0.00	0.00
11,475.0	90.00	0.00	7,099.8	4,658.1	-259.3	4,665.3	0.00	0.00	0.00
11,500.0	90.00	0.00	7,099.8	4,683.1	-259.3	4,690.2	0.00	0.00	0.00
11,525.0	90.00	0.00	7,099.8	4,708.1	-259.3	4,715.2	0.00	0.00	0.00
11,550.0	90.00	0.00	7,099.8	4,733.1	-259.3	4,740.2	0.00	0.00	0.00
11,575.0	90.00	0.00	7,099.8	4,758.1	-259.3	4,765.1	0.00	0.00	0.00
11,600.0	90.00	0.00	7,099.8	4,783.1	-259.3	4,790.1	0.00	0.00	0.00
11,625.0	90.00	0.00	7,099.8	4,808.1	-259.3	4,815.1	0.00	0.00	0.00
11,650.0	90.00	0.00	7,099.8	4,833.1	-259.3	4,840.0	0.00	0.00	0.00
11,675.0	90.00	0.00	7,099.8	4,858.1	-259.3	4,865.0	0.00	0.00	0.00
11,700.0	90.00	0.00	7,099.8	4,883.1	-259.3	4,890.0	0.00	0.00	0.00
11,725.0	90.00	0.00	7,099.8	4,908.1	-259.3	4,914.9	0.00	0.00	0.00
11,750.0	90.00	0.00	7,099.8	4,933.1	-259.3	4,939.9	0.00	0.00	0.00
11,775.0	90.00	0.00	7,099.8	4,958.1	-259.3	4,964.9	0.00	0.00	0.00
11,800.0	90.00	0.00	7,099.8	4,983.1	-259.3	4,989.8	0.00	0.00	0.00
11,825.0	90.00	0.00	7,099.8	5,008.1	-259.3	5,014.8	0.00	0.00	0.00
11,850.0	90.00	0.00	7,099.8	5,033.1	-259.3	5,039.8	0.00	0.00	0.00
11,853.4	90.00	0.00	7,099.8	5,036.5	-259.2	5,043.2	0.00	0.00	0.00

SandRidge Energy

Survey Report

Company:	SandRidge Energy	Local Co-ordinate Reference:	Well Mutual 0780 2-8H
Project:	North Park Basin	TVD Reference:	WELL @ 8172.0usft (Original Well Elev)
Site:	T7N-R80W-S17	MD Reference:	WELL @ 8172.0usft (Original Well Elev)
Well:	Mutual 0780 2-8H	North Reference:	Grid
Wellbore:	Wellbore #1	Survey Calculation Method:	Minimum Curvature
Design:	Design #1	Database:	EDMProd

Design Targets									
Target Name	Dip Angle	Dip Dir.	TVD	+N/-S	+E/-W	Northing	Easting	Latitude	Longitude
- hit/miss target	(°)	(°)	(usft)	(usft)	(usft)	(usft)	(usft)		
- Shape									
Mutual 2-8H	0.00	0.00	7,100.0	5,036.5	-259.2	1,462,149.77	2,748,494.00	40° 35' 54.504 N	106° 24' 20.547 W
- plan misses target center by 0.2usft at 11853.4usft MD (7099.8 TVD, 5036.5 N, -259.2 E)									
- Point									

Formations						
Measured Depth	Vertical Depth	Name	Lithology	Dip	Dip Direction	
(usft)	(usft)			(°)	(°)	
5,434.7	5,433.0	Shannon		0.00		
6,849.5	6,803.0	Niobrara		0.00		

Checked By: _____ Approved By: _____ Date: _____