

# COLUMBINE LOGGING

Scale: 5" / 100'  
Measured Depth Log

**Well Name** Wells Ranch AF05-690 (Vert)

**Location** SWSW 32 6N 62W

**State** COLORADO

**County** WELD

**Country** USA

**Rig Number** H&P #273

**API Number** 05-123-41786

**Field** WATTENBERG

**Region** DJ BASIN

**Drilling Completed** 9/7/2015

**Spud Date** 9/1/2015

**Surface Coordinates** Lat: 40.43764  
Long: -104.35449  
615' FSL  
650' FWL

**Bottom Hole Coordinates** 1' FSL  
535' FEL

**Ground Elevation** 4,716'

**K.B. Elevation** 4,740'

**Logged Interval** 800' To 15,993'

**Total Depth** 15,993'

**Formation** NIOBRARA C MARL

**Type of Drilling Fluid** H2O, LSND

## Operator

**Company** NOBLE ENERGY, INC.

**Address** 1625 BROADWAY  
DENVER, CO 80202  
(303) 228-4000

## Geologist

**Name** MICHAEL ANDERSON, JOHN SABROSKE

**Company** COLUMBINE LOGGING, INC.

**Address** 602 S. LIPAN ST  
DENVER, COLORADO 80223  
(303) 289-7764

## Zone Color Coding

Oil	Condensate	Gas
Note	Core	Pressure
Error	Water	Seal

## Rock Types

UNKNOWN	COAL	MARLSTONE	SHALY SANDSTONE
ANHYDRITE	CONGLOMERATE	METAMORPHIC	SHALY SILTSTONE
BENTONITE	DOLOMITE	NO SAMPLE	SILTSTONE
BRECCIA	DOLOMITIC LIMESTONE	SALT	SILTY SHALE
CEMENT	GRANITE	SALT- PEPPER SAND	TILL
CHALK	GYPSUM	SANDSTONE	TUFF
CHERT	IGNEOUS	SHALE	WELDED TUFF
CLAY CHOKE SAND	LIMESTONE	SHALE COLORED	
CLAYSTONE	SIDERITE or LIMONITE	SHALE GRAY	

## Accessories

### Fossils

ALGAE
AMPHIPORA
BELEMNITE
BIOCLASTIC
BRACHIOPOD
BRYOZOA
CEPHALOPOD
CORAL
CRINOID
ECHINOID
FISH
FORAMINIFERA
FOSSIL

GASTROPOD

INOCERAMUS

OOLITE

OSTRACOD

PELECYPOD

PELLET

PISOLITE

PLANT REMAINS

PLANT SPORES

SCAPHOPOD

STROMATOPOROID

### Minerals

ANHYDRITIC
ARGILLACEOUS

ARGILLITE GRAIN

BENTONITE

BITUMENOUS SUBSTANCE

BRECCIA FRAGMENTS

CALCAREOUS

CARBONACEOUS FLAKES

CHTDK

CHTLT

COAL - THIN BEDS

DOLOMITIC

FELDSPAR

FERRUGINOUS PELLET

FERRUGINOUS

GLAUCONITE

GYPSIFEROUS

HEAVY MINERAL

KAOLIN

MARCASITE

MARLSTONE

MICACEOUS

MINERAL CRYSTALS

NODULES

PHOSPHATE PELLETS

PYRITE

SALT CAST

SANDY

SIDERITE

SILICEOUS

SILTY

TUFFACEOUS

### Stringer

ANHYDRITE STRINGER
BENTONITE STRINGER
COAL STRINGER
DOLOMITE STRINGER
GYPSUM STRINGER
LIMESTONE STRINGER
MARLSTONE (CALC) STRG
MARLSTONE (DOL) STRG
SANDSTONE STRINGER
SHALE STRINGER
SILTSTONE STRINGER

## Other Symbols

### Oil Show

DEAD
EVEN
QUESTIONABLE
SPOTTED STAINING

### Porosity

E EARTHY
F FENESTRAL
F FRACTURE
X INTERCRYSTALLINE
Q INTEROOLITIC
M MOLDIC

ORGANIC

P PINPOINT

V VUGGY

### Engineering

BIT CHANGE
CONNECTION (LEFT)
CONNECTION (RIGHT)
CONNECTION GAS
TRIP GAS
DOWN TIME GAS
CORE - LOST
CORE - RECOVERED
DST INTERVAL

FAULT

FORMATION TOP

GAS SHOW

OIL SHOW

MN DEPTH

MN DEPTH (RIGHT)

NORMAL FAULT

OVERTURNED STRATA

REVERSE FAULT

CASING

SIDEWALL CORE (LEFT)

SIDEWALL CORE (RIGHT)

SLIDE

SURVEY

DRILL STEM TEST

WIRELINE TESTED - LEFT

WIRELINE TESTED - RT

### Rounding

ANGULAR
ROUNDED
SUBANG
SUBRND

### Textures

BOUNDSTONE
CHALKY
CRYPTOXLN

E EARTHY

FX FINELYXLN

GS GRAINSTONE

L LITHOGRAPHIC

MX MICROXLN

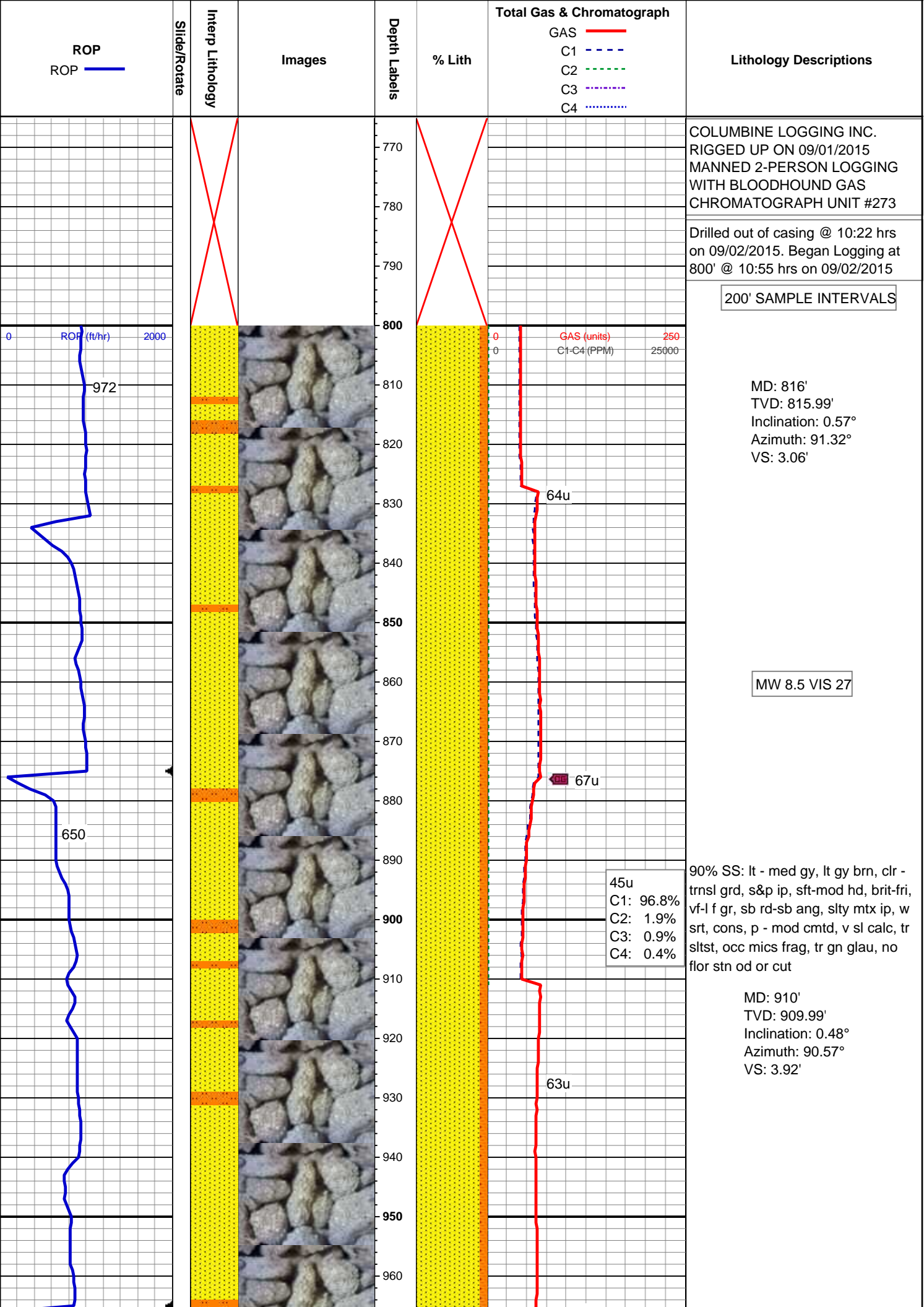
MS MUDSTONE

PS PACKSTONE

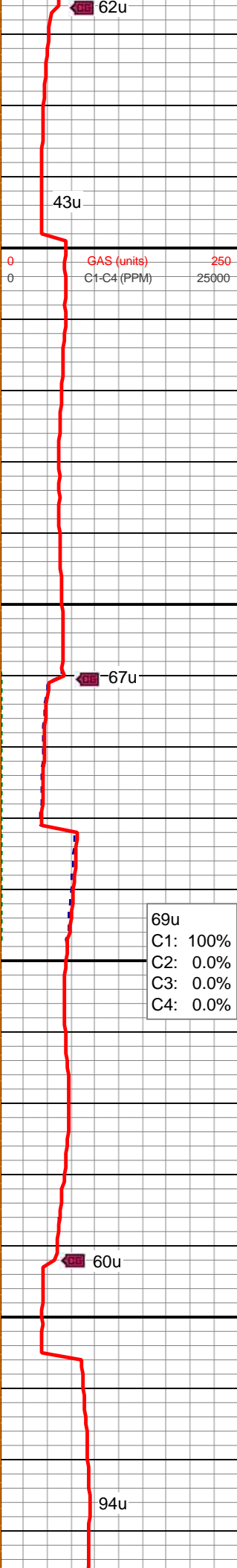
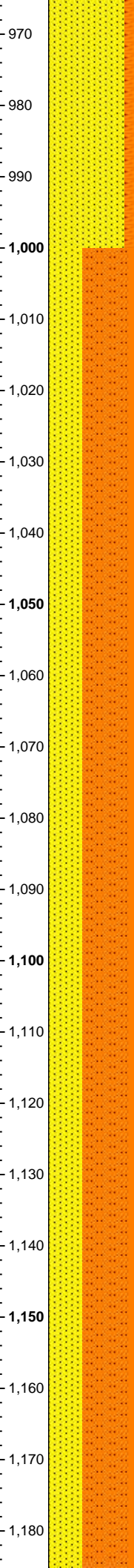
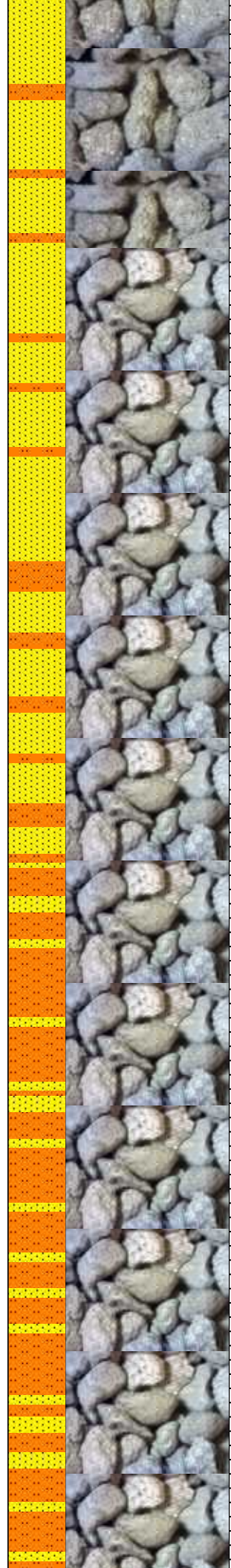
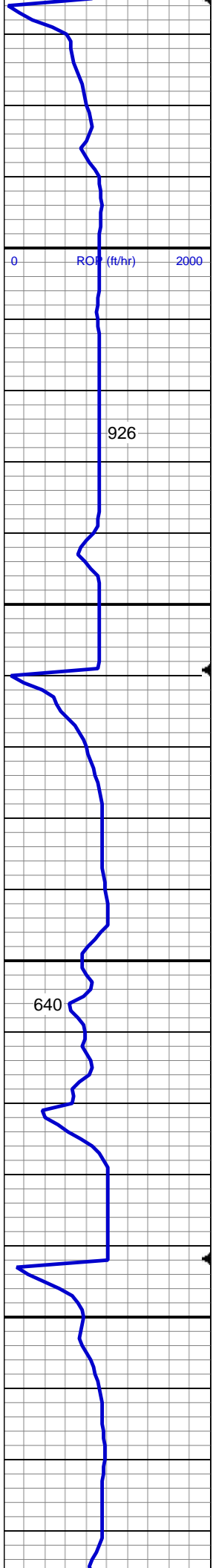
WS WACKESTONE

### Sorting

M MODERATE
P POOR
W WELL





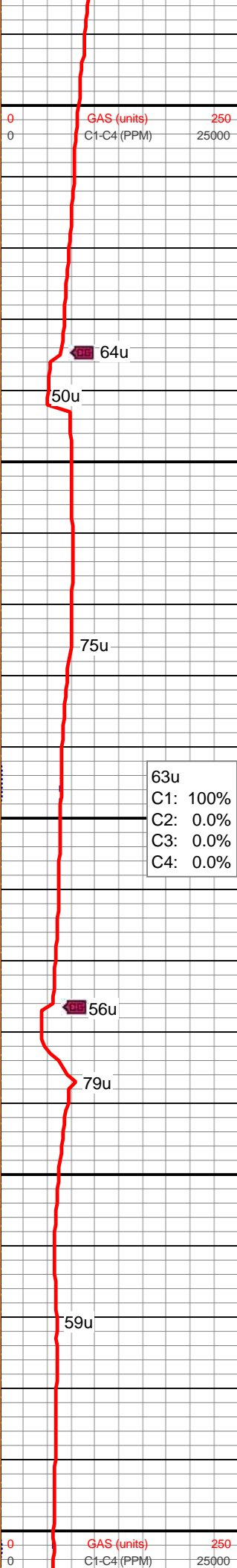
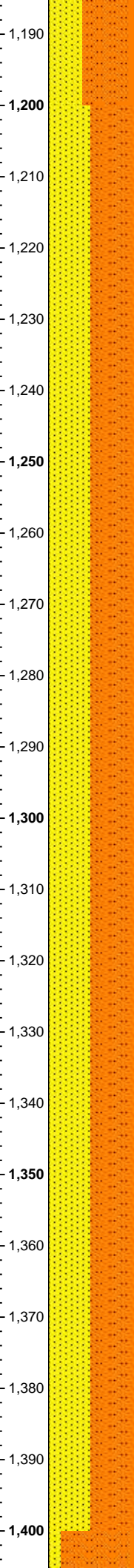
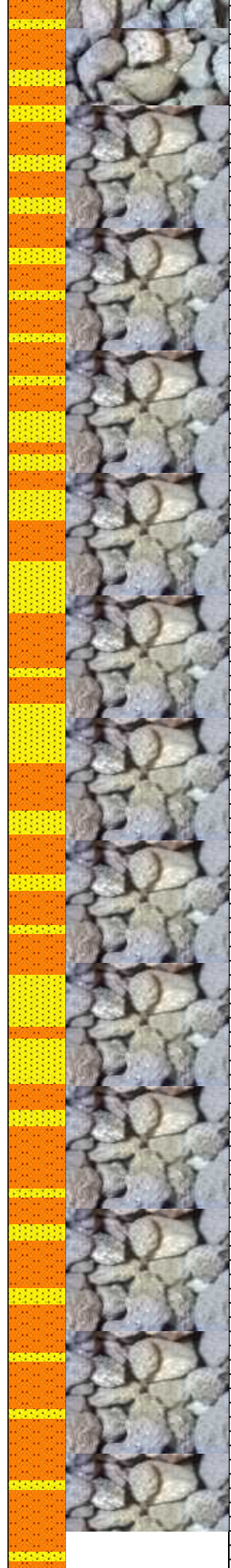
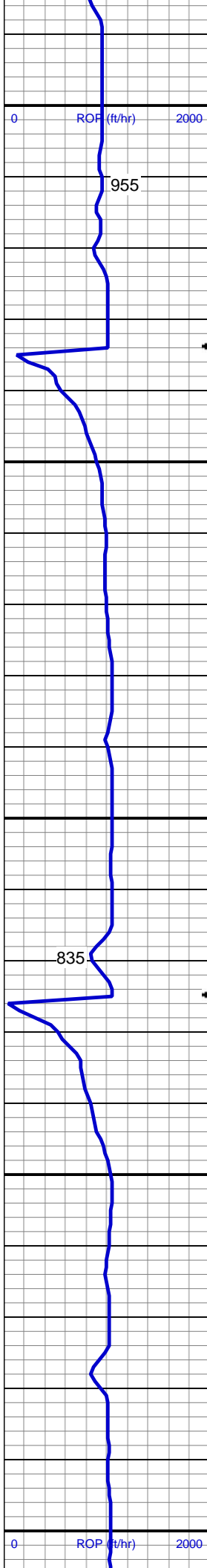


MD: 1,004'  
TVD: 1,003.99'  
Inclination: 0.37°  
Azimuth: 91.01°  
VS: 4.62'

69u  
C1: 100%  
C2: 0.0%  
C3: 0.0%  
C4: 0.0%

60% SLTST: lt gy, occ med gy, sl  
sdy ip, v-mod sft, fri, sb blk, gt tex,  
sly-v sl arg mtx, 40% SS: lt - med  
gy, lt gy brn, occ offwht, clr - trns  
grd, s&p, sft-mod hd, brit - fri, pred  
vf gr, occ l f grnd sd, sb rd-sb ang,  
occ sly mtx, w srt, cons, mod-w  
cmt, v sl calc, tr mics frag, rr gn  
glau, nfsoc

MD: 1,190'



TVD: 1,189.98'  
Inclination: 0.25°  
Azimuth: 135.17°  
VS: 5.52'

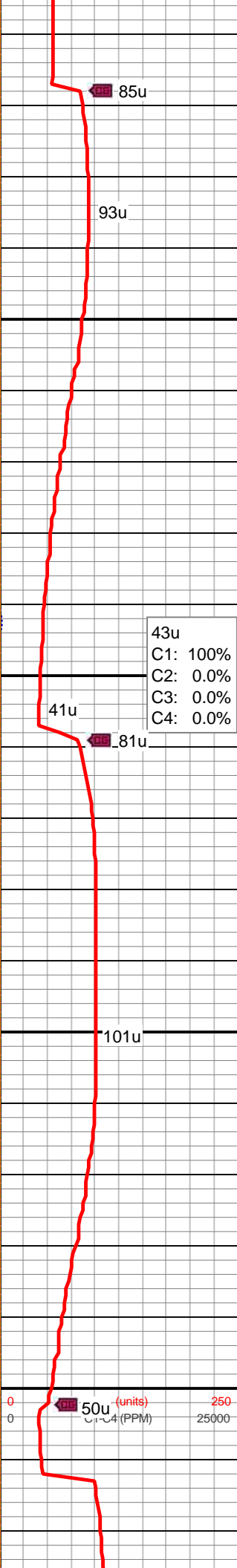
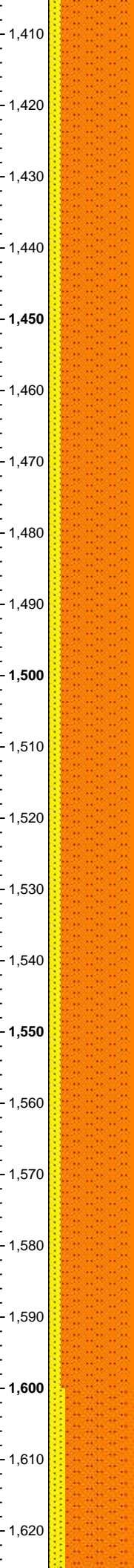
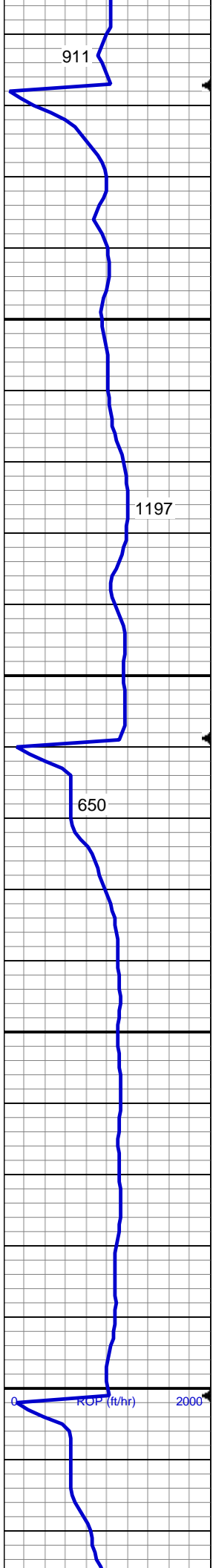
MD: 1,281'  
TVD: 1,280.98'  
Inclination: 0.31°  
Azimuth: 132.46°  
VS: 5.85'

65% SLTST: lt-med gy, pred v sft & fri, occ med frm, sb blk, gt tex, slty-arg mtx, grd to 35% SS: lt - med gy, offwht - wh, clr - trnsl grd, s&p ip, hd, brit, vf-f gr, sb rd-sb ang, mod srt, cons, mod-w cmtd, sl-mod calc, tr mics frag, abnt gn glau assoc wi ss, nfsoc

MD: 1,372'  
TVD: 1,371.98'  
Inclination: 0.44°  
Azimuth: 129.16°  
VS: 6.31'

MW 8.5 VIS 28

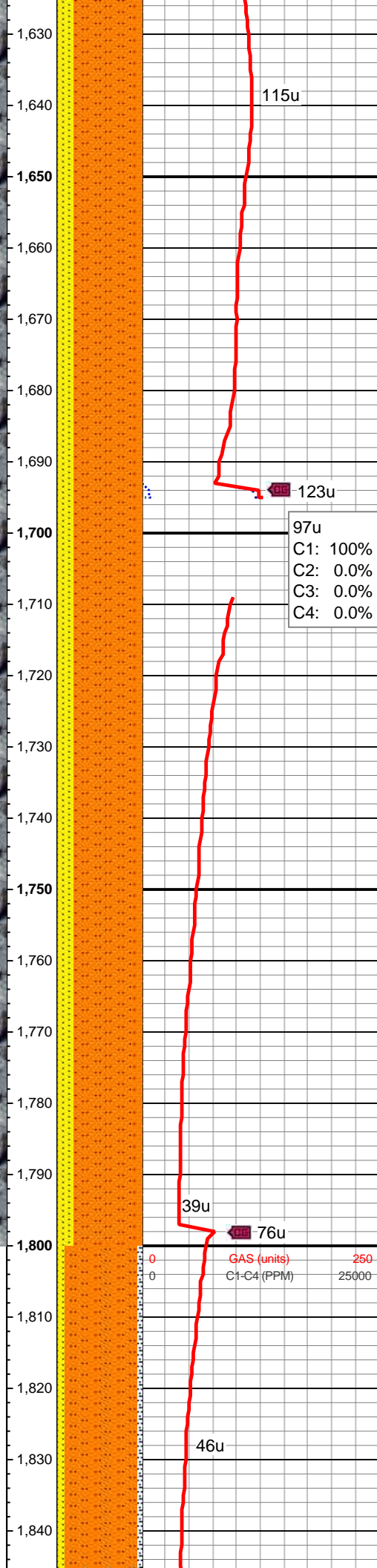
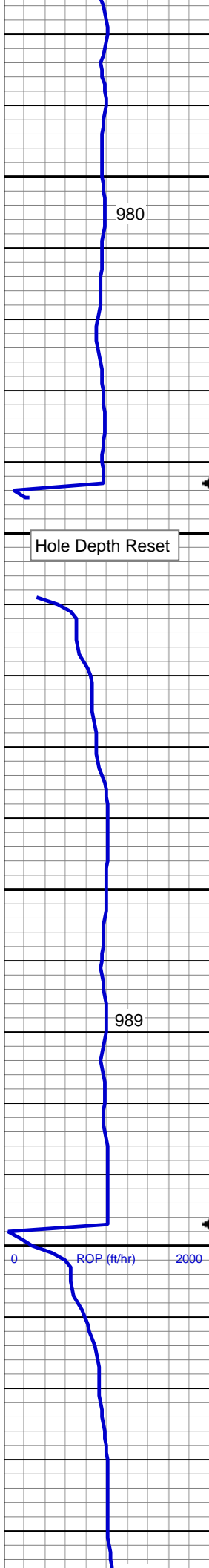




MD: 1,464'  
TVD: 1,463.98'  
Inclination: 0.28°  
Azimuth: 151.86°  
VS: 6.71'

85% SLTST: lt-med gy, sft-mod frm, brit-fri, sb blk, gt tex, slty-arg mtx, grdg to 15% SS: lt gy, offwht-wh, clr-trnsl grd, hd, brit, vf gr, sb rd-sb ang, w srt, cons, w cmt, mod calc, rr dul gn ss flr, no od stn or cut

MD: 1,555'  
TVD: 1,554.98'  
Inclination: 0.33°  
Azimuth: 132.81°  
VS: 7.01'

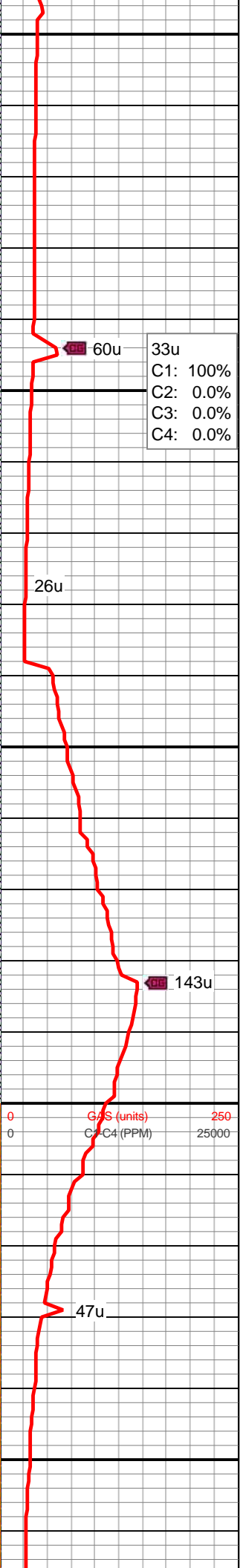
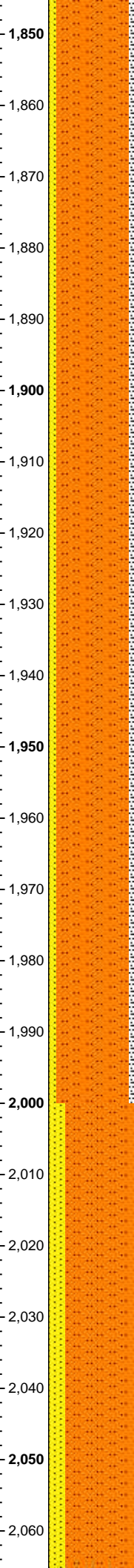
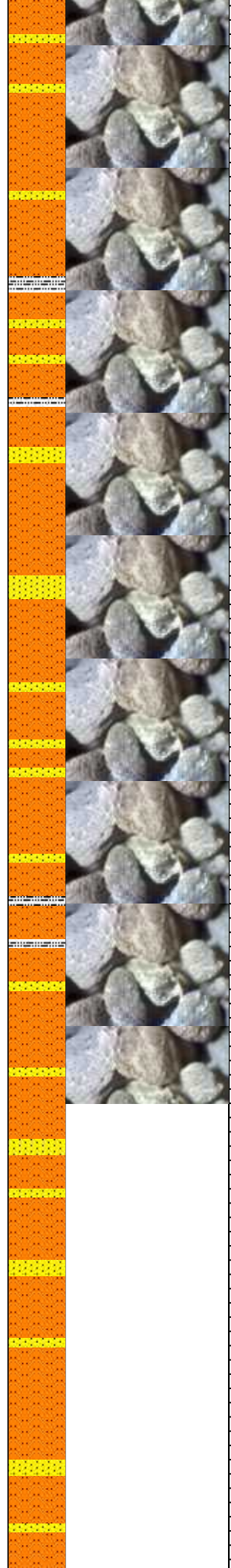
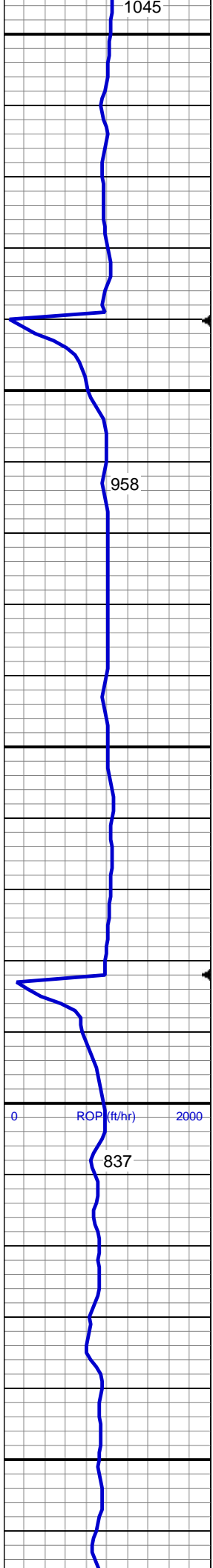


MD: 1,647'  
TVD: 1,646.97'  
Inclination: 0.31°  
Azimuth: 134.36°  
VS: 7.4'

80% SLTST: lt-med gy, sdy ip, sft-mod frm, brit-fri, sb blk, gt tex, slty-arg mtx, fy intlam wi 20% SS: lt gy, offwht-wh, clr-trnsl grd, hd, brit, vf gr, sb rd-sb ang, w srt, cons, w cmt, v sl calc, rr gn glau, tr dul gn ss flor, no od stn or cut

MD: 1,738'  
TVD: 1,737.97'  
Inclination: 0.34°  
Azimuth: 167.05°  
VS: 7.65'



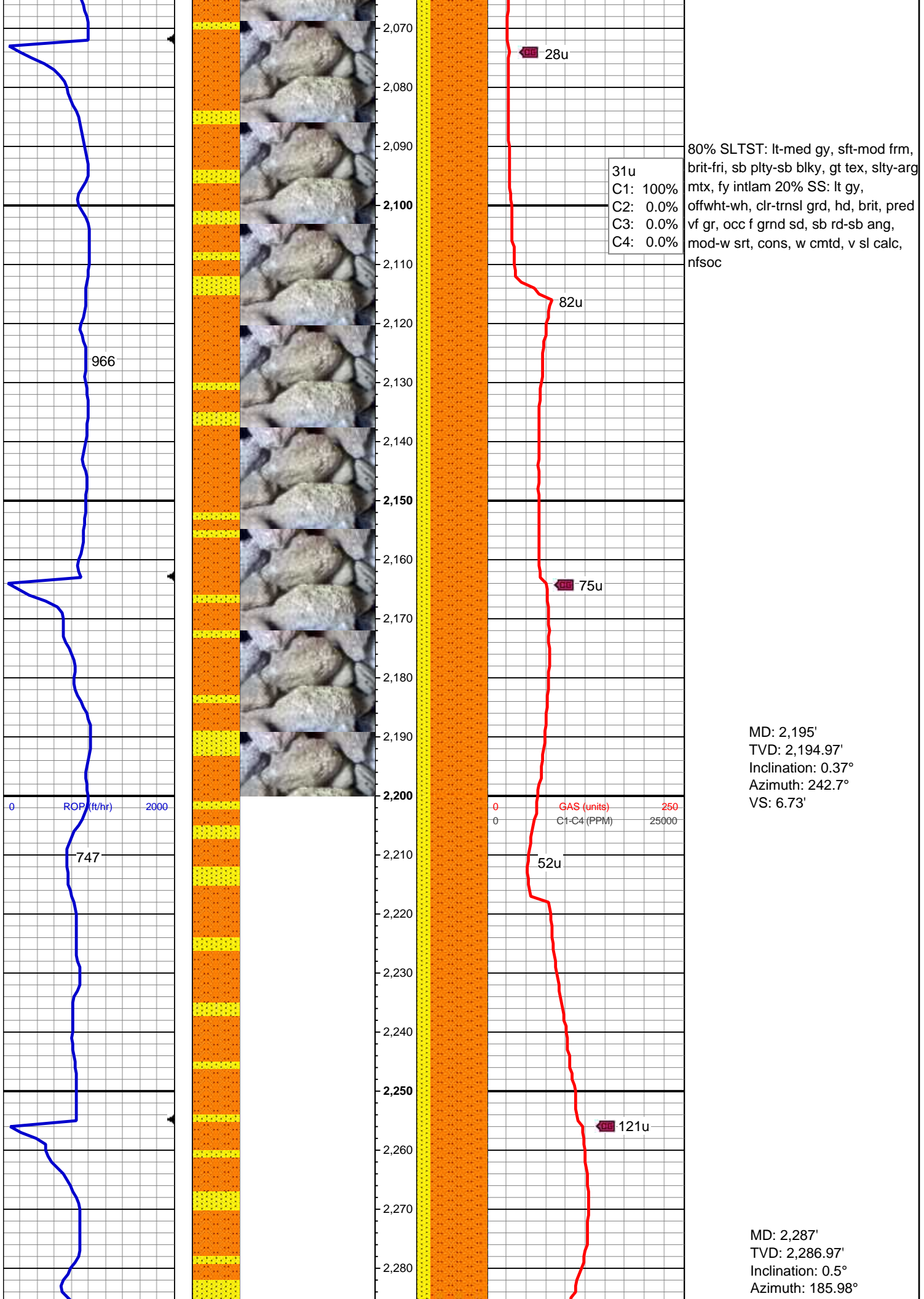


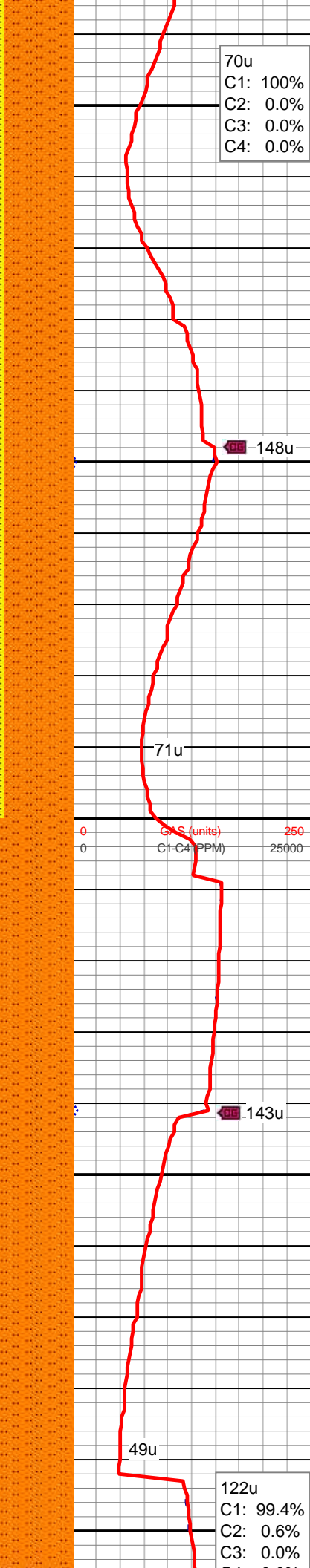
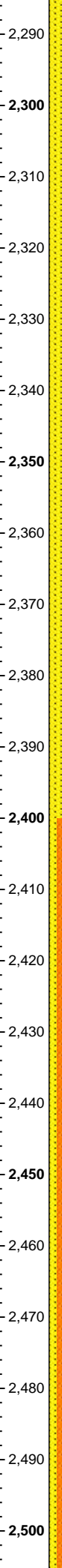
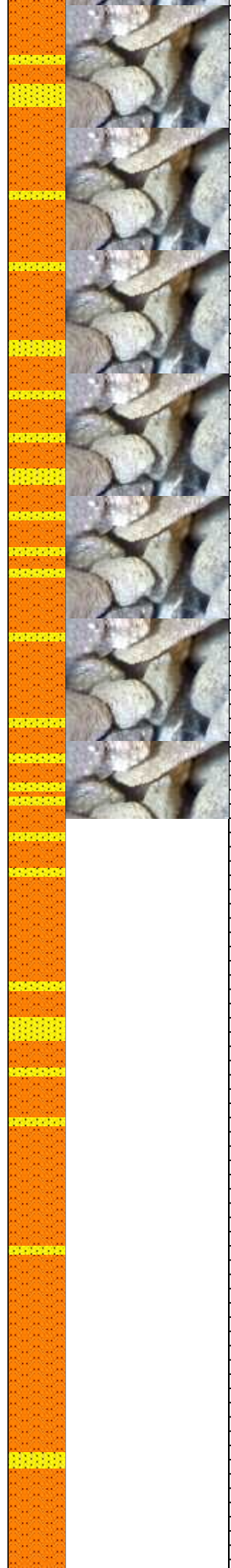
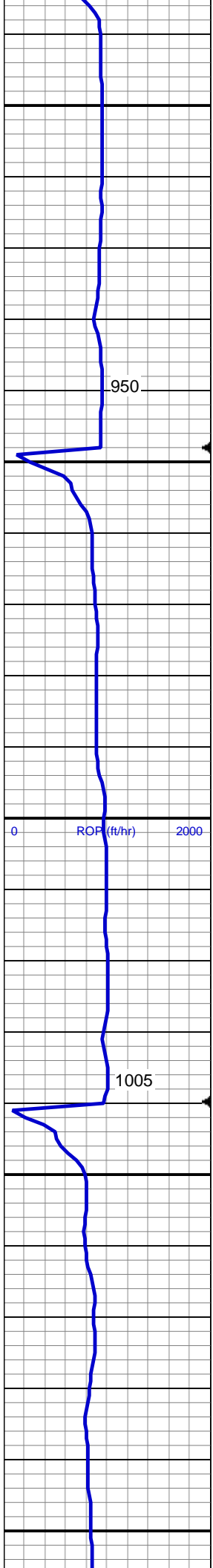
85% SLTST: lt-med gy, sft-mod frm, brit-fri, sb plty-sb blk, gt tex, slty-arg mtx, sl calc, occ fy intlam wi (10%) ss, tr (5%) slty sh, rr calcite, rr gn glau, tr dul yel-orng mnrl flor, no od stn or cut

MD: 1,921'  
TVD: 1,920.97'  
Inclination: 0.25°  
Azimuth: 198.9°  
VS: 7.68'

MW 8.7 VIS 28







VS: 6.44'

80% SLTST: lt-med gy, sft-mod frm, brit-fri, sb blk, gt tex, slty-arg mtx, fy intlam wi 20% SS: offwht-wh, lt gy, clr-trnsl grd, hd, brit, vf-l f gr, sb rd-sb ang, mod-w srt, cons, w cmt, v sl calc, nfsoc

MW 8.85 VIS 28

MD: 2,470'

TVD: 2,469.96'

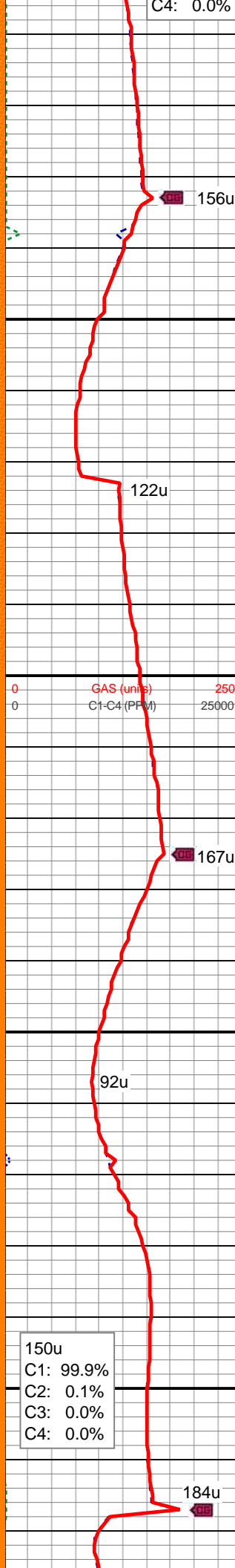
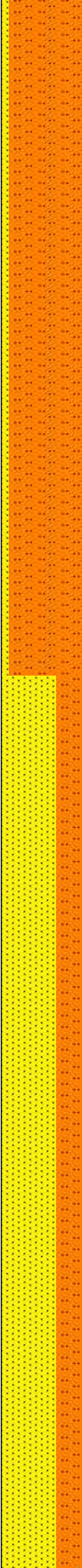
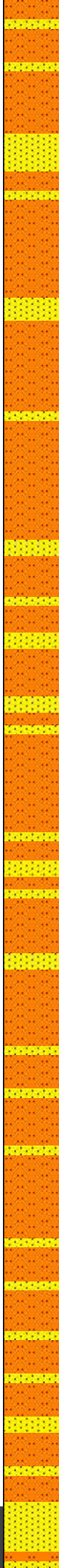
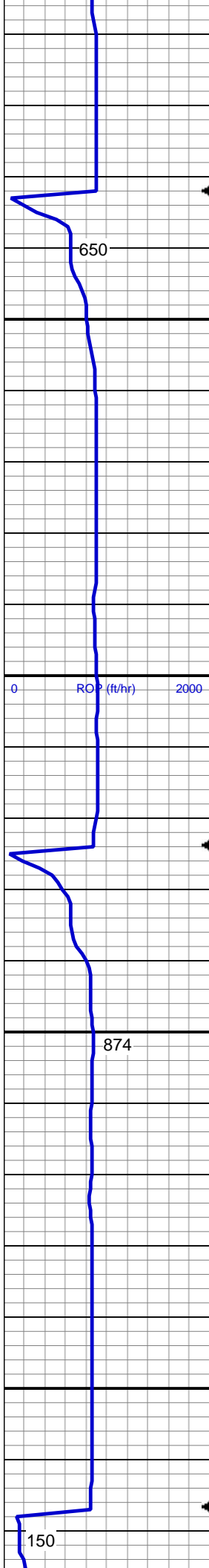
Inclination: 0.55°

Azimuth: 151.82°

VS: 6.82'

90% SLTST: lt-med gy, sdy ip, sft-mod frm, brit-fri, sb blk, gt tex, slty-arg mtx, v sl calc, occ (10%) fy intlam ss strgs, tr mics frags, rr





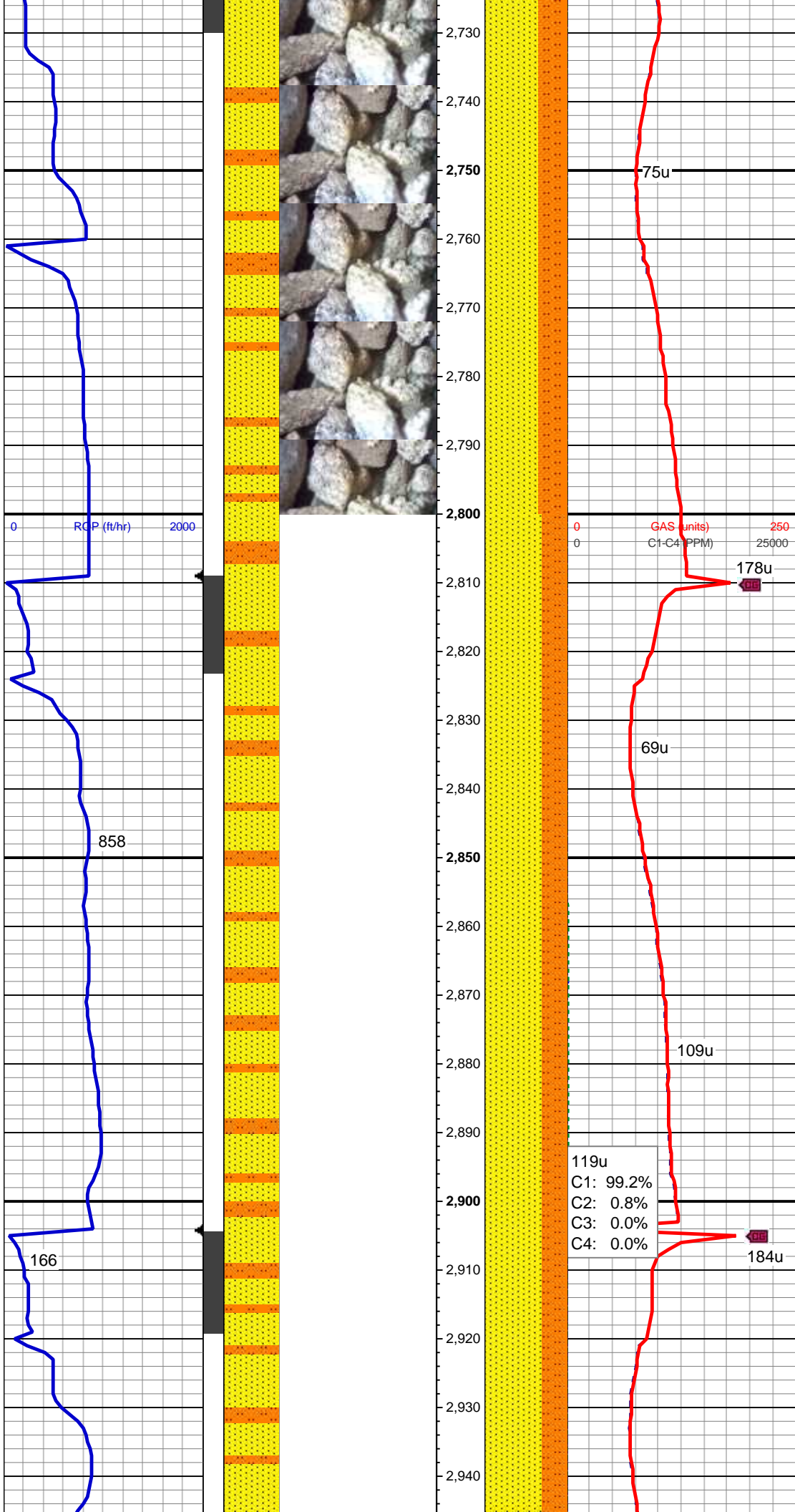
C4: 0.0% glau, nfsoc

MD: 2,561'  
TVD: 2,560.95'  
Inclination: 0.82°  
Azimuth: 172.34°  
VS: 7.14'

MD: 2,653'  
TVD: 2,652.94'  
Inclination: 1°  
Azimuth: 176°  
VS: 7.33'

65% SS: offwht-wh, lt gy, clr-trnsl  
grd, mod-v hd, brit, vf-f gr, sb rd-sb  
ang, mod-w srt, cons, w cmted, 35%  
SLTST: lt-med gy, sdy ip, sft-mod  
frm, brit-fri, sb blk, gt tex, slty-arg  
mtx, v sl calc, rr fos frag lnoc, occ  
glau, tr mics frags, occ dul gn ss  
flor, v slow difse, v sl stmg, dul bl  
wh mky cut, n stn or od





MD: 2,745'  
TVD: 2,744.9'  
Inclination: 2.54°  
Azimuth: 211.48°  
VS: 6.4'

MD: 2,839'  
TVD: 2,838.77'  
Inclination: 3.43°  
Azimuth: 218.84°  
VS: 3.67'

MW 8.9 VIS 29

MD: 2,933'  
TVD: 2,932.5'  
Inclination: 5.25°  
Azimuth: 232.59°  
VS: -1.36'



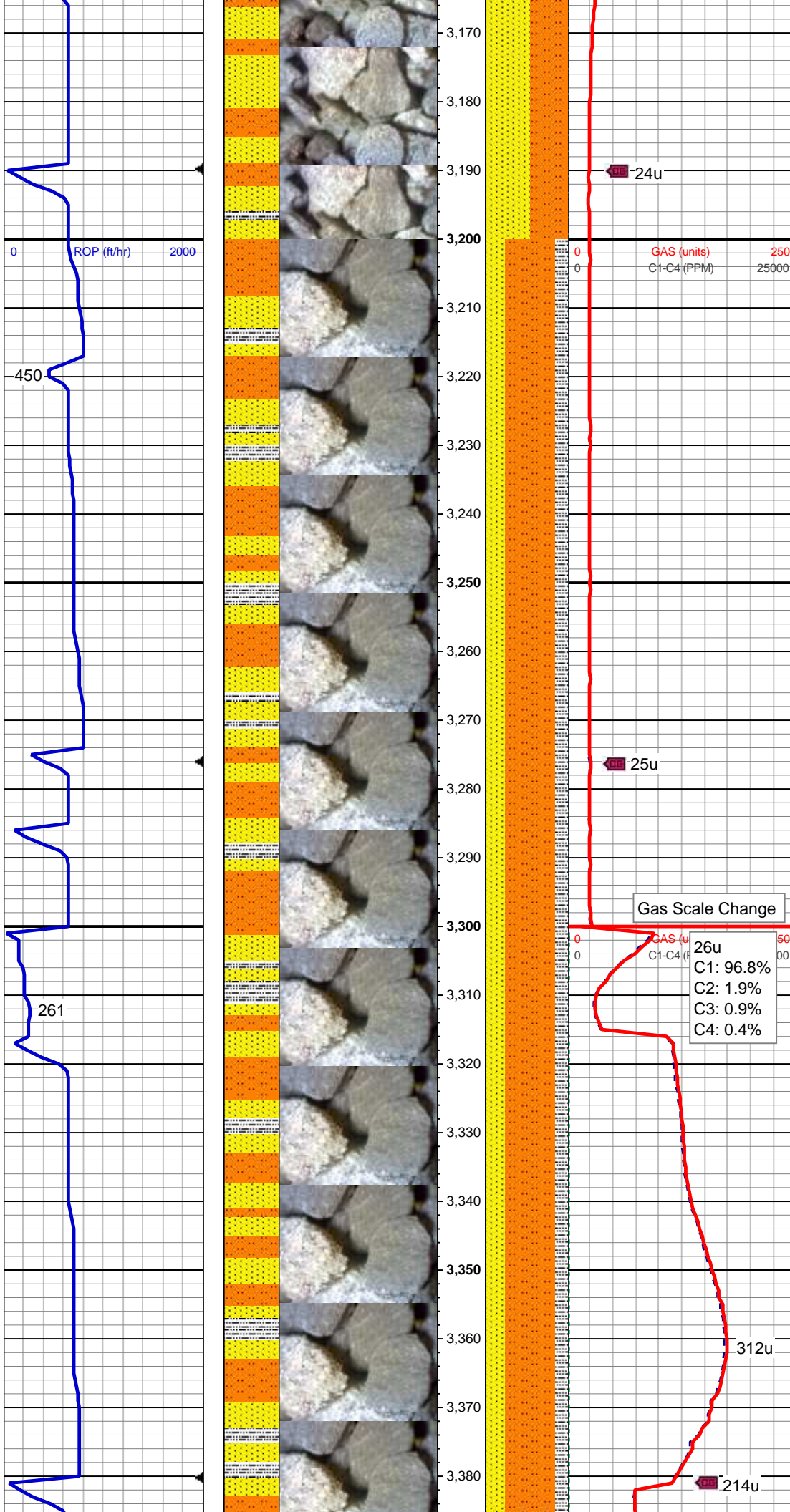
MD: 3,027'  
TVD: 3,025.87'  
Inclination: 7.94°  
Azimuth: 237.96°  
VS: -10.08'

55% SS: offwht-wh, com lt gy,  
clr-trnsl grd, mod-v hd, brit, vf-f gr,  
sb rd-sb ang, mod-w srt, cons, w  
cmtd, 45% SLTST: lt-med gy, sdy  
ip, sft-mod frm, brit-fri, sb blk, gt  
tex, slty-arg mtx, v sl calc, rr fos frag  
Inoc, occ glau, tr mics frags, occ dul  
gn ss flor, v slow difse, v sl strng,  
dul bl wh mky cut, n stn or od

21u  
C1: 99.3%  
C2: 0.7%  
C3: 0.0%  
C4: 0.0%

MD: 3,121'  
TVD: 3,118.82'  
Inclination: 9.18°  
Azimuth: 241.92°  
VS: -21.98'





Change Out Shaker Screens

MD: 3,216'  
TVD: 3,212.77'  
Inclination: 7.84°  
Azimuth: 241.45°  
VS: -34.15'

Change Out Shaker Screens

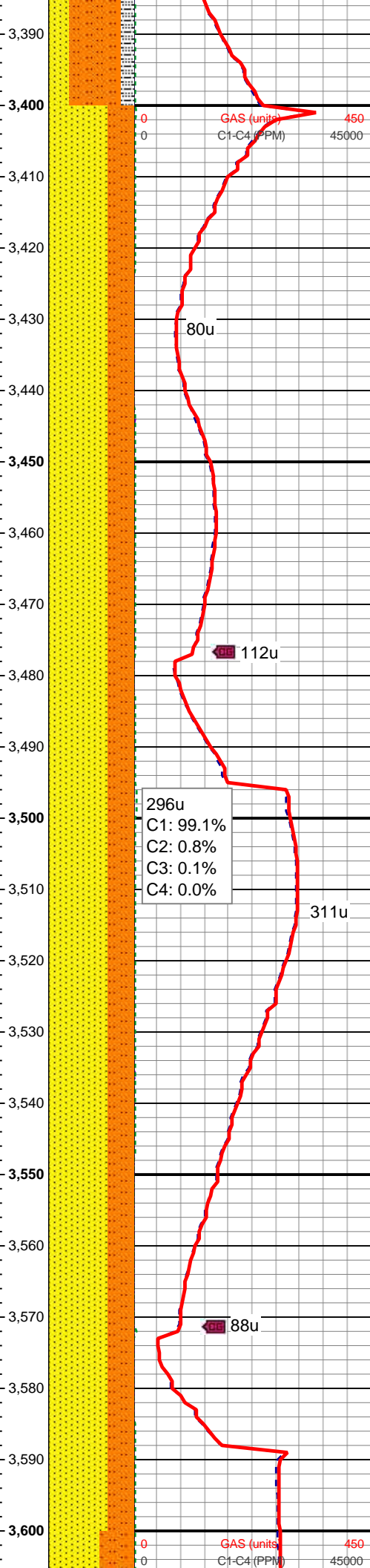
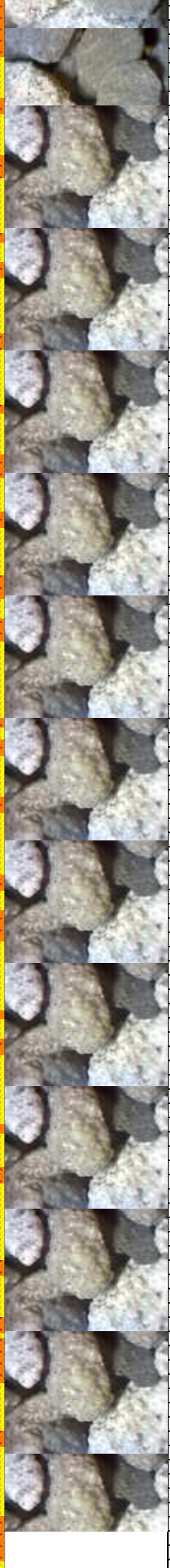
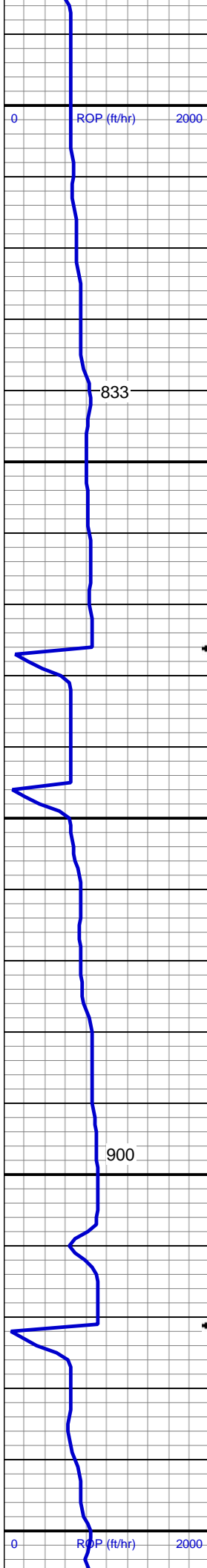
60% SLTST: lt - med gy, mod frm, brit, sb blk, gt tex, slty - arg mtx, fy intlam; 25% SS: offwht/lt gy, clr - trnsl grd, mod hd -hd, brit, vf-f gr, sb rd-sb ang, mod srt, cons, mod cmd, 15% SLTY SH: gy-med dk gy, mod - v frm, brit, sl fiss ip, plty-sb plty, slty mtx, nfsoc

MD: 3,311'  
TVD: 3,306.69'  
Inclination: 9.46°  
Azimuth: 230.83°  
VS: -45.63'

Gas Scale Change

GAS (u)  
C1-C4 (PPM)  
26u  
C1: 96.8%  
C2: 1.9%  
C3: 0.9%  
C4: 0.4%



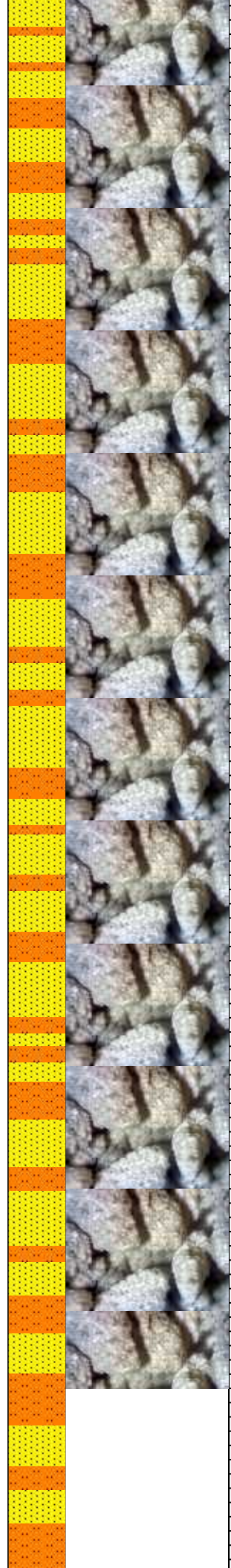
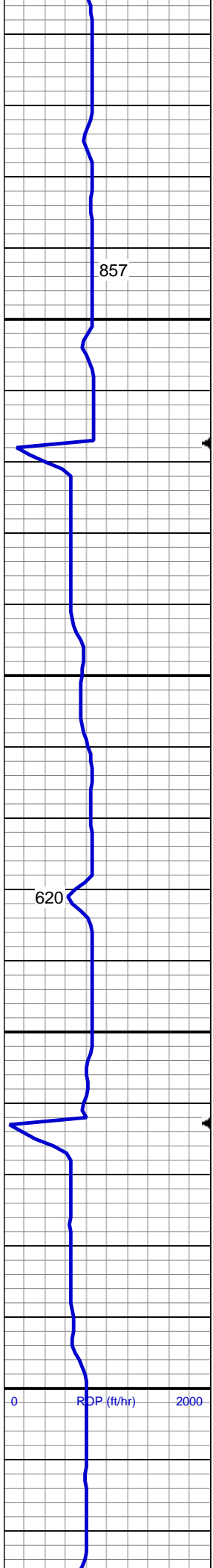


MD: 3,406'  
TVD: 3,400.48'  
Inclination: 8.91°  
Azimuth: 228.56°  
VS: -56.89'

MD: 3,500'  
TVD: 3,493.28'  
Inclination: 9.36°  
Azimuth: 228.09°  
VS: -67.73'

70% SS: offwht-wh, com lt gy, clr-trnsl grd, mod-v hd, brit, vf-f gr, sb rd-sb ang, mod-w srt, cons, w cmtd, 30% SLTST: lt-med gy, sdy ip, sft-mod frm, brit-fri, sb blk, gt tex, slty-arg mtx, v sl calc, rr fos frag Inoc, tr mics frags, occ dul gn ss flor, v slow difse, v sl stmg, dul bl wh mky cut, n stn or od

MD: 3,595'  
TVD: 3,586.96'  
Inclination: 9.92°  
Azimuth: 228.82°  
VS: -79.12'



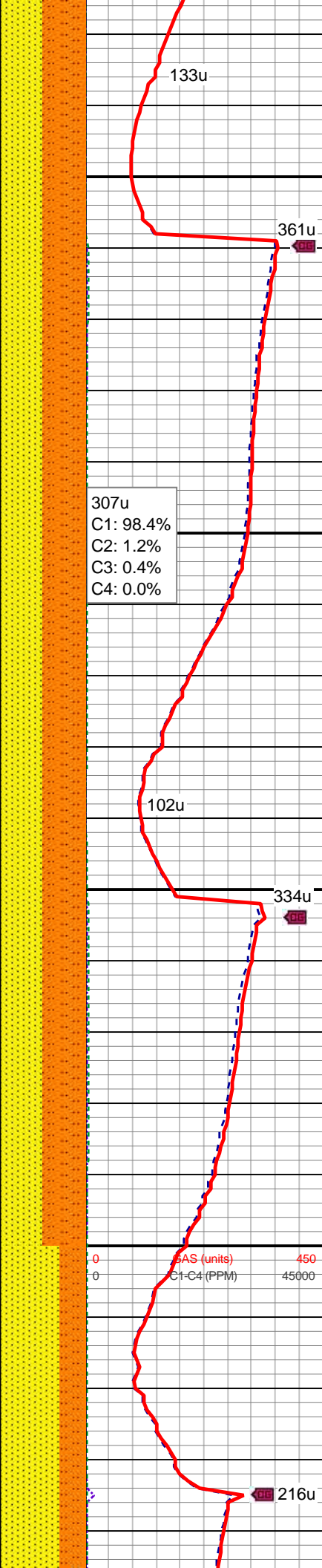
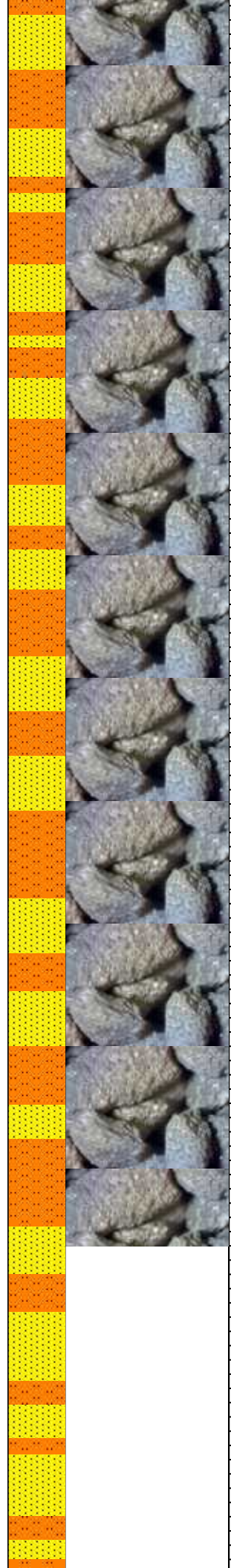
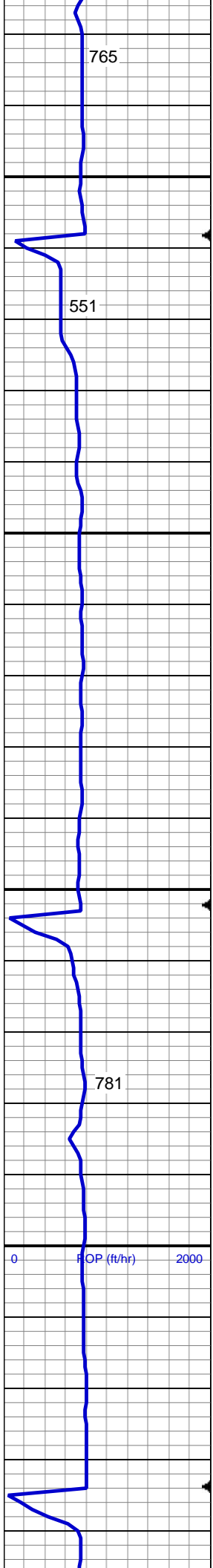
280u  
C1: 98.6%  
C2: 1.1%  
C3: 0.3%  
C4: 0.0%

MD: 3,690'  
TVD: 3,680.39'  
Inclination: 10.8°  
Azimuth: 229.36°  
VS: -91.86'

60% SS: offwht-wh, com lt gy, clr-trnsl grd, mod-v hd, brit, vf-f gr, sb rd-sb ang, mod-w srt, cons, w cmtd, 40% SLTST: lt-med gy, sdy ip, sft-mod frm, brit-fri, sb blk, gt tex, slty-arg mtx, v sl calc, rr fos frag Inoc, tr mics frags, occ dul gn ss flor, v slow difse, v sl strng, dul bl wh mky cut, n stn or od

MD: 3,785'  
TVD: 3,773.65'  
Inclination: 11.2°  
Azimuth: 228.33°  
VS: -105.13'





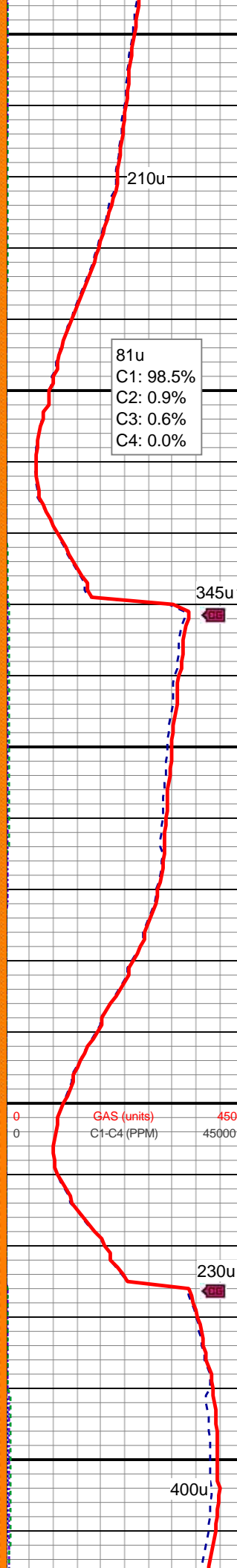
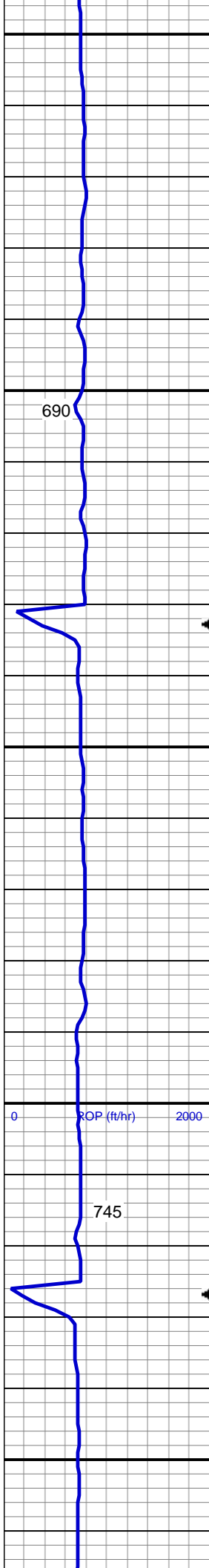
MD: 3,880'  
TVD: 3,866.86'  
Inclination: 11.06°  
Azimuth: 228.87°  
VS: -118.5'

50% SS: offwht-wh, com lt gy, clr-trnsl grd, mod-v hd, brit, vf-f gr, sb rd-sb ang, mod-w srt, cons, w cmtd, 50% SLTST: lt-med gy, sdy ip, sft-mod frm, brit-fri, sb blk, gt tex, slty-arg mtx, v sl calc, occ glau, tr mics frags, occ dul gn ss flor, v slow difse, v sl strng, dul bl wh mky cut, n stn or od

MD: 3,974'  
TVD: 3,959.22'  
Inclination: 10.36°  
Azimuth: 228.62°  
VS: -131.27'

MW 9.0 VIS 29



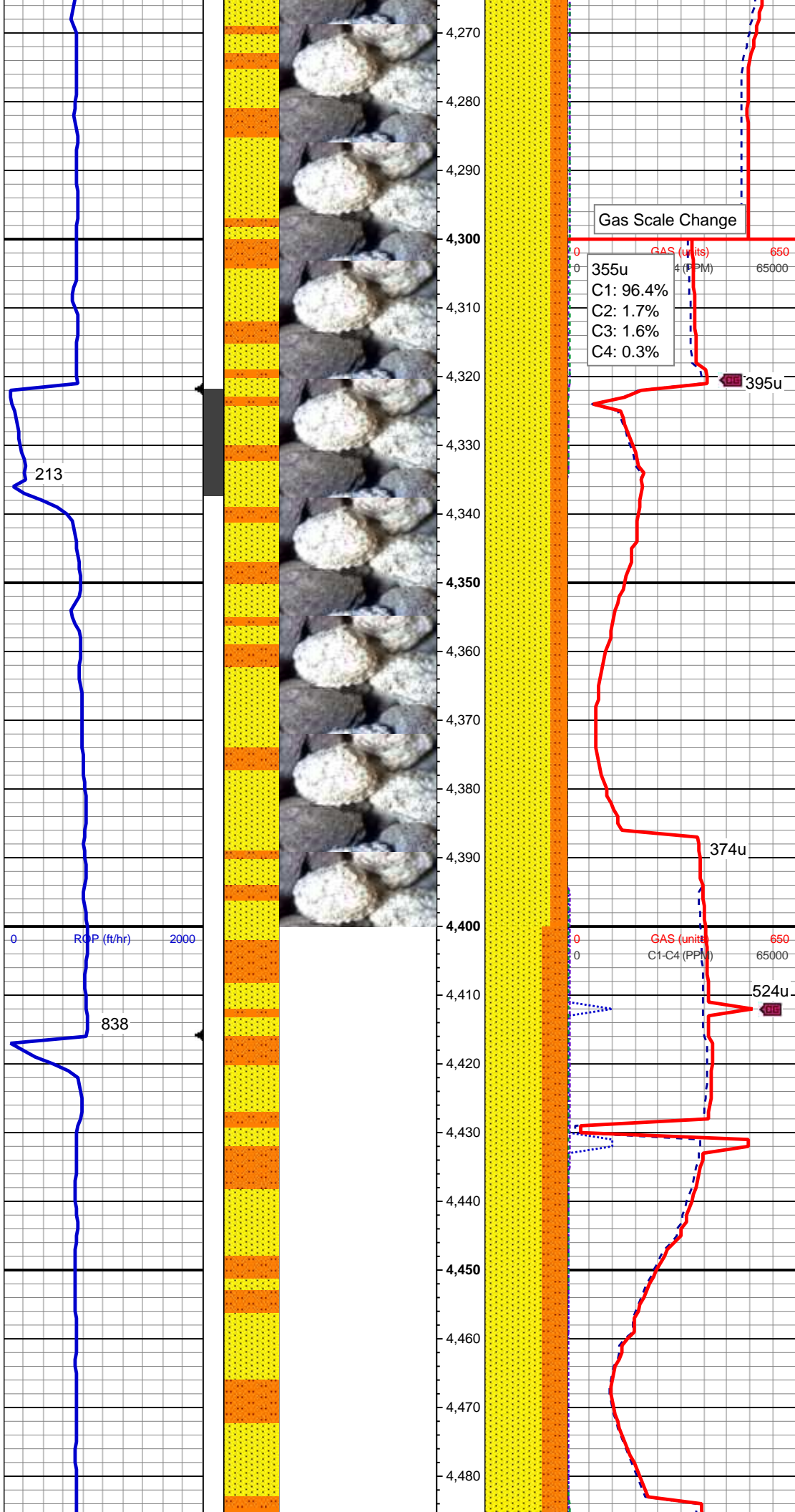


MD: 4,069'  
TVD: 4,052.75'  
Inclination: 9.86°  
Azimuth: 228.72°  
VS: -143.44'

70% SS: offwht-wh, com lt gy, clr-trnsl grd, mod-v hd, brit, vf-f gr, sb rd-sb ang, mod-w srt, cons, w cmtd, 30% SLTST: lt-med gy, sdy ip, sft-mod frm, brit-fri, sb blk, gt tex, slty-arg mtx, v sl calc, occ glau, tr mics frags, occ gy sh, occ dul gn ss flor, v slow difse, v sl stmg, dul bl wh mky cut, n stn or od

MD: 4,164'  
TVD: 4,146.49'  
Inclination: 8.81°  
Azimuth: 224.57°  
VS: -154.33'

MD: 4,259'  
TVD: 4,240.5'  
Inclination: 7.74°



Normal: 223.54°  
VS: -163.53'

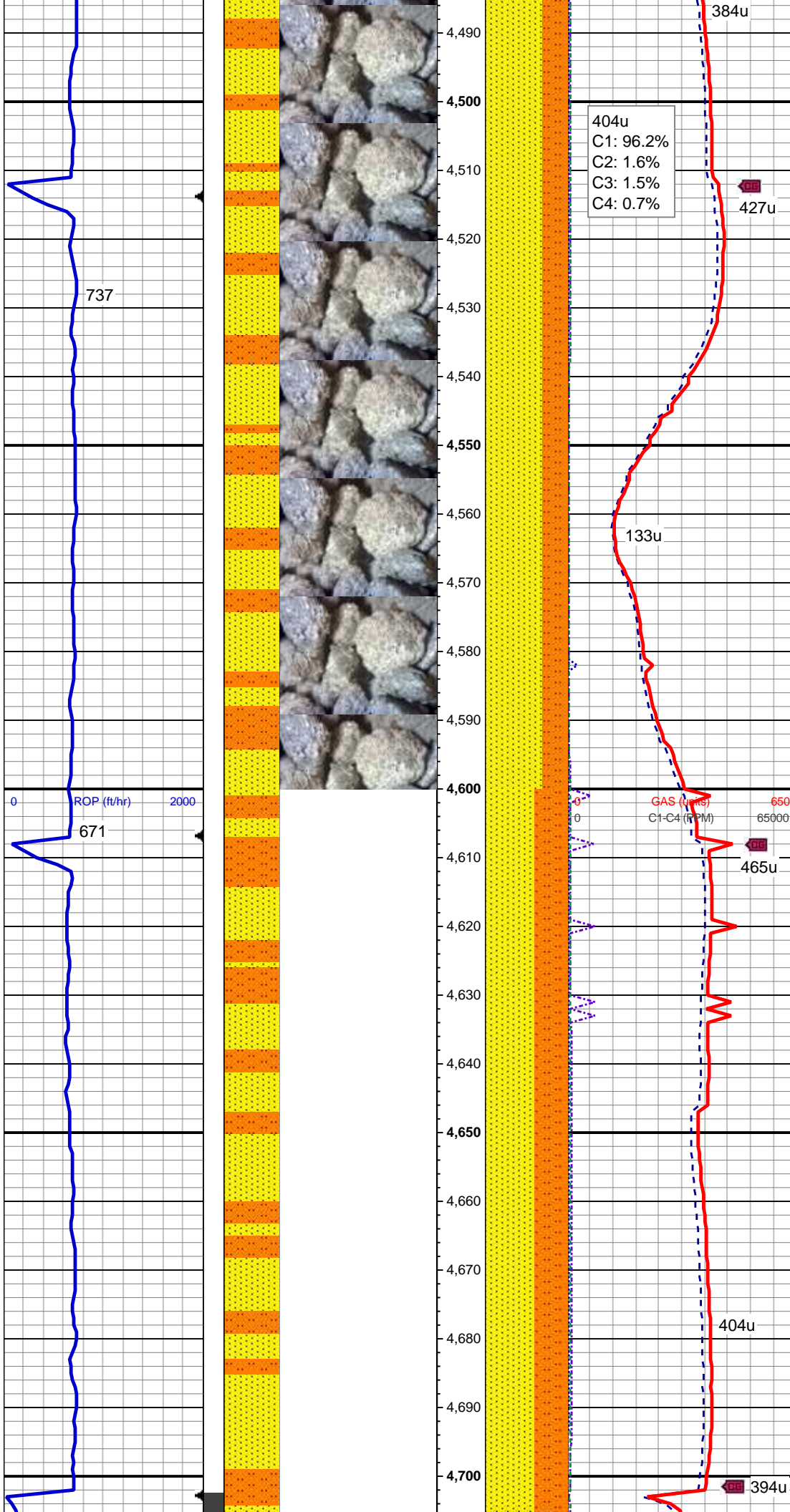
80% SS: offwht-wh, com lt gy, clr-trnsl grd, mod-v hd, brit, vf-f gr, sb rd-sb ang, mod-w srt, cons, w cmtd, 20% SLTST: lt-med gy, sdy ip, sft-mod frm, brit-fri, sb blk, gt tex, slty-arg mtx, v sl calc, occ glau, tr mics frags, com gy sh, occ dul gn ss flor, v slow difse, v sl stmg, dul bl wh mky cut, n stn or od

MD: 4,353'  
TVD: 4,333.4'  
Inclination: 9.81°  
Azimuth: 219.43°  
VS: -172.64'

MD: 4,448'  
TVD: 4,427.04'  
Inclination: 9.62°  
Azimuth: 216.52°  
VS: -182.11'

70% SS: offwht-wh, com lt gy,





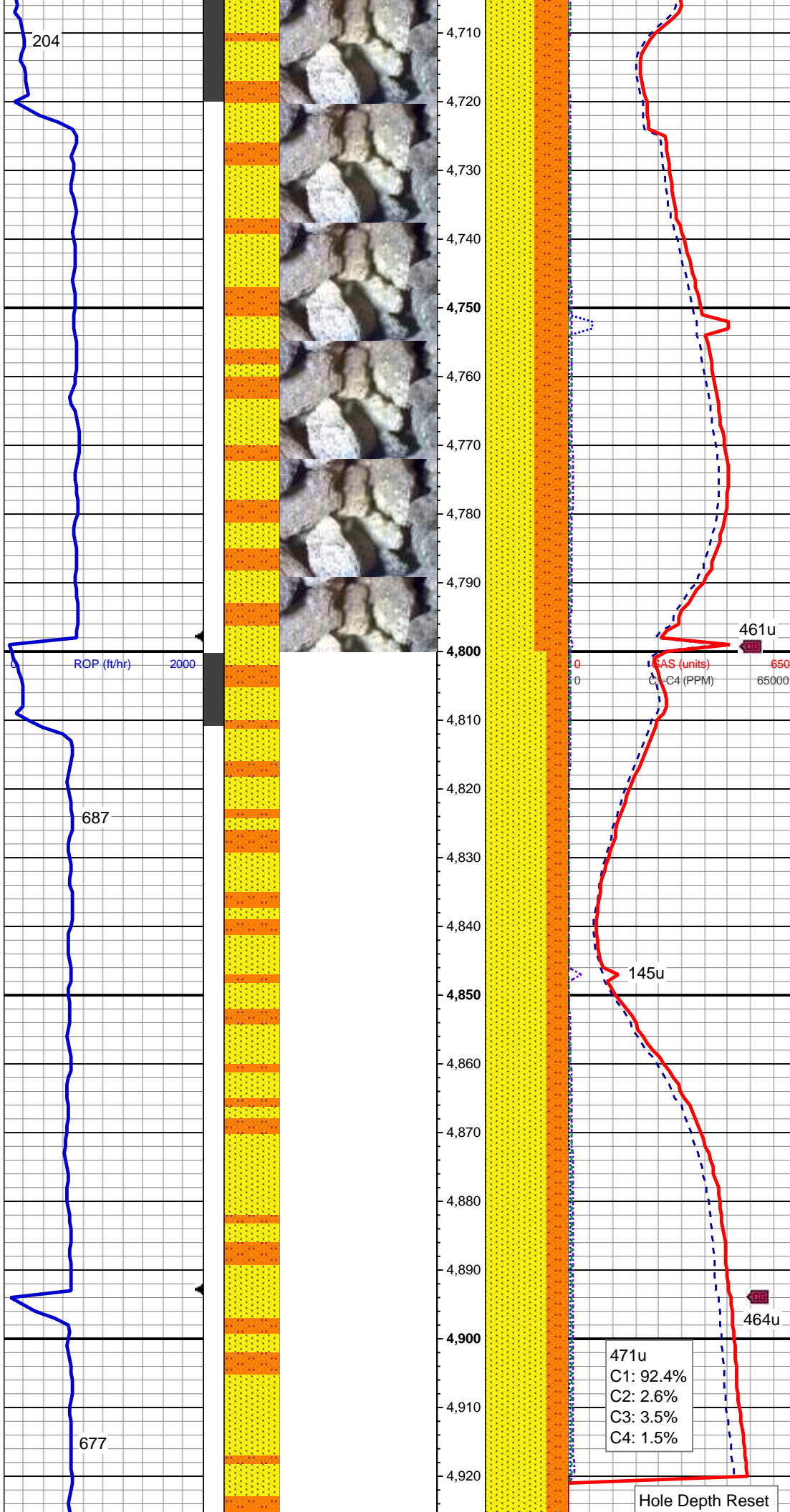
clr-trnsl grd, mod-v hd, brit, vf-f gr, sb rd-sb ang, mod-w srt, cons, w cmtd, 30% SLTST: lt-med gy, sdy ip, sft-mod frm, brit-fri, sb blk, gt tex, slty-arg mtx, v sl calc, occ glau, tr mics frags, com gy sh, occ dul gn ss flor, v slow difse, v sl stmg, dul bl wh mky cut, n stn or od

MD: 4,543'  
TVD: 4,520.91'  
Inclination: 8.02°  
Azimuth: 215.28°  
VS: -190.29'

MD: 4,638'  
TVD: 4,615.06'  
Inclination: 7.3°  
Azimuth: 208.32°  
VS: -196.65'

60% SS: offwht-wh, com lt gy, clr-trnsl grd, mod-v hd, brit, vf-f gr, sb rd-sb ang, mod-w srt, cons, w cmtd, 40% SLTST: lt-med gy, sdy ip, sft-mod frm, brit-fri, sb blk-sb plty, gt tex, slty-arg mtx, occ glau, tr





mics frags, tr gy sh, occ dul gn ss  
flor, v slow difse, v sl stmg, dul bl  
wh mky cut, n stn or od

MD: 4,732'  
TVD: 4,708.25'  
Inclination: 7.76°  
Azimuth: 216.26°  
VS: -202.91'

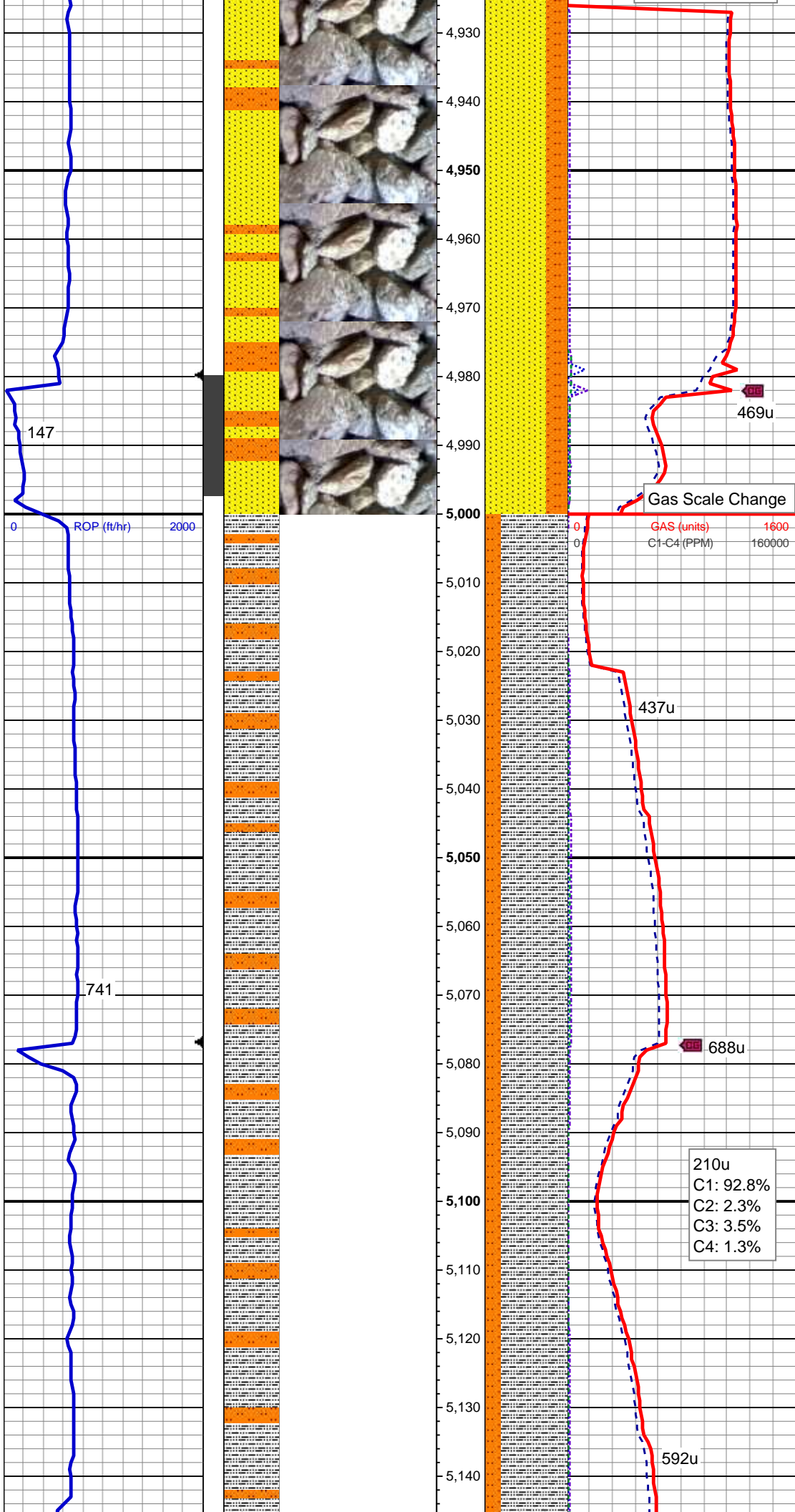
MD: 4,827'  
TVD: 4,802.37'  
Inclination: 7.93°  
Azimuth: 226.43°  
VS: -211.15'

75% SS: offwht-wh, com lt gy,  
clr-trnsl grd, mod-v hd, brit, vf-f gr,  
sb rd-sb ang, mod-w srt, cons, w  
cmt, 25% SLTST: lt-med gy, sdy  
ip, sft-mod frm, brit-fri, sb blkly-sb  
ppty, gt tex, slty-arg mtx, occ glau, tr  
mics frags, occ sh, com dul gn ss  
flor, v slow difse, v sl stmg, dul bl  
wh mky cut, n stn or od

471u  
C1: 92.4%  
C2: 2.6%  
C3: 3.5%  
C4: 1.5%

Hole Depth Reset

MD: 4,922'



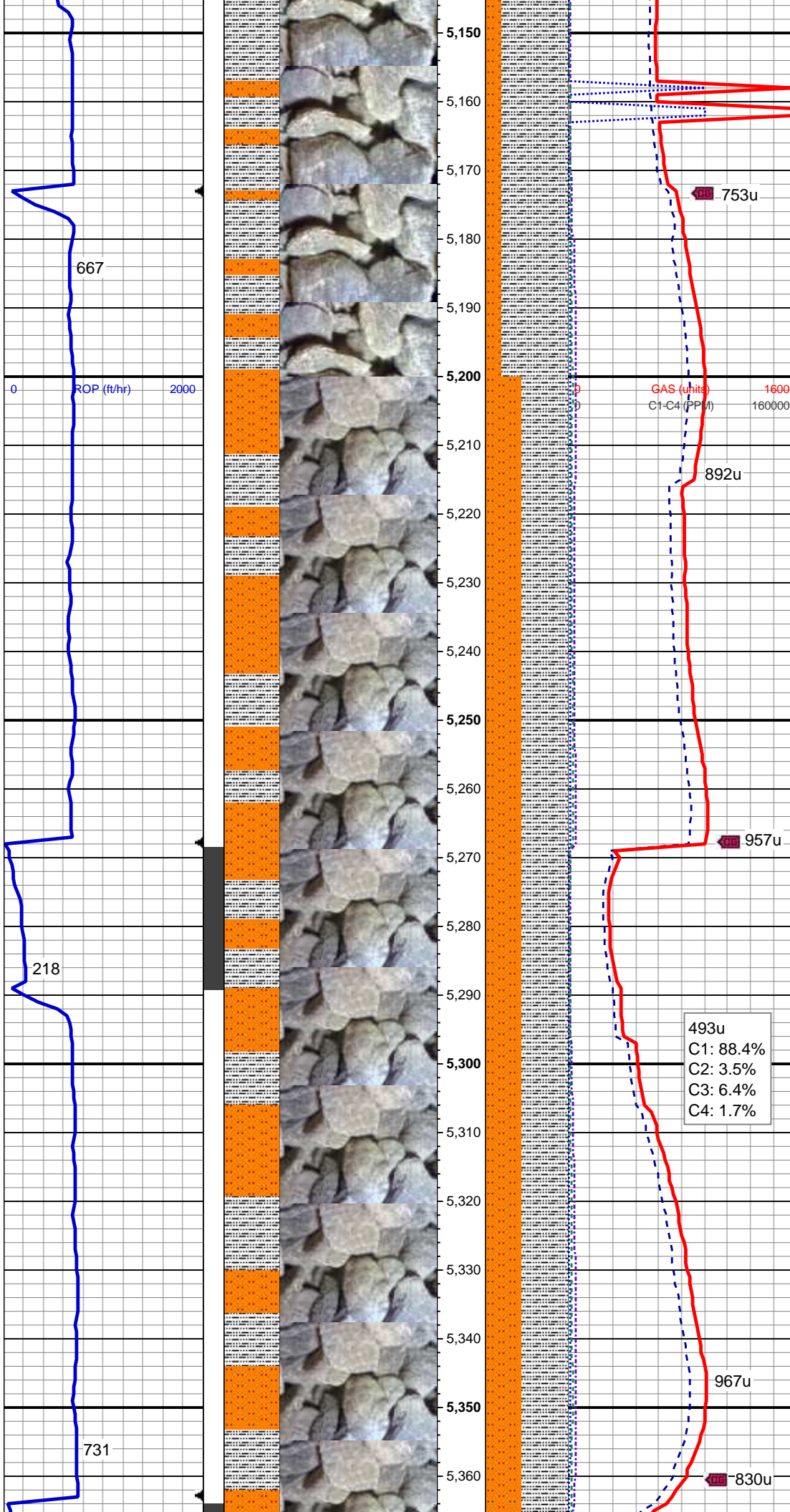
TVD: 4,896.43'  
Inclination: 8.24°  
Azimuth: 229.3°  
VS: -220.78'

MD: 5,016'  
TVD: 4,989.25'  
Inclination: 9.88°  
Azimuth: 227.41°  
VS: -231.51'

80% SLTY SH: med-dk gy, mod  
frm-brit, sl fiss ip, sb blkly-plty, arg -  
sly mtx, sl calc, 20% SLTST: lt-med  
gy, sdy ip, sft-mod frm, brit-fri, sb  
blkly-sb plty, gt tex, sly-arg mtx, occ  
glau, occ ss, tr mics frags, nsfoc

MD: 5,111'  
TVD: 5,083.08'  
Inclination: 8.09°  
Azimuth: 222.43°  
VS: -241.7'

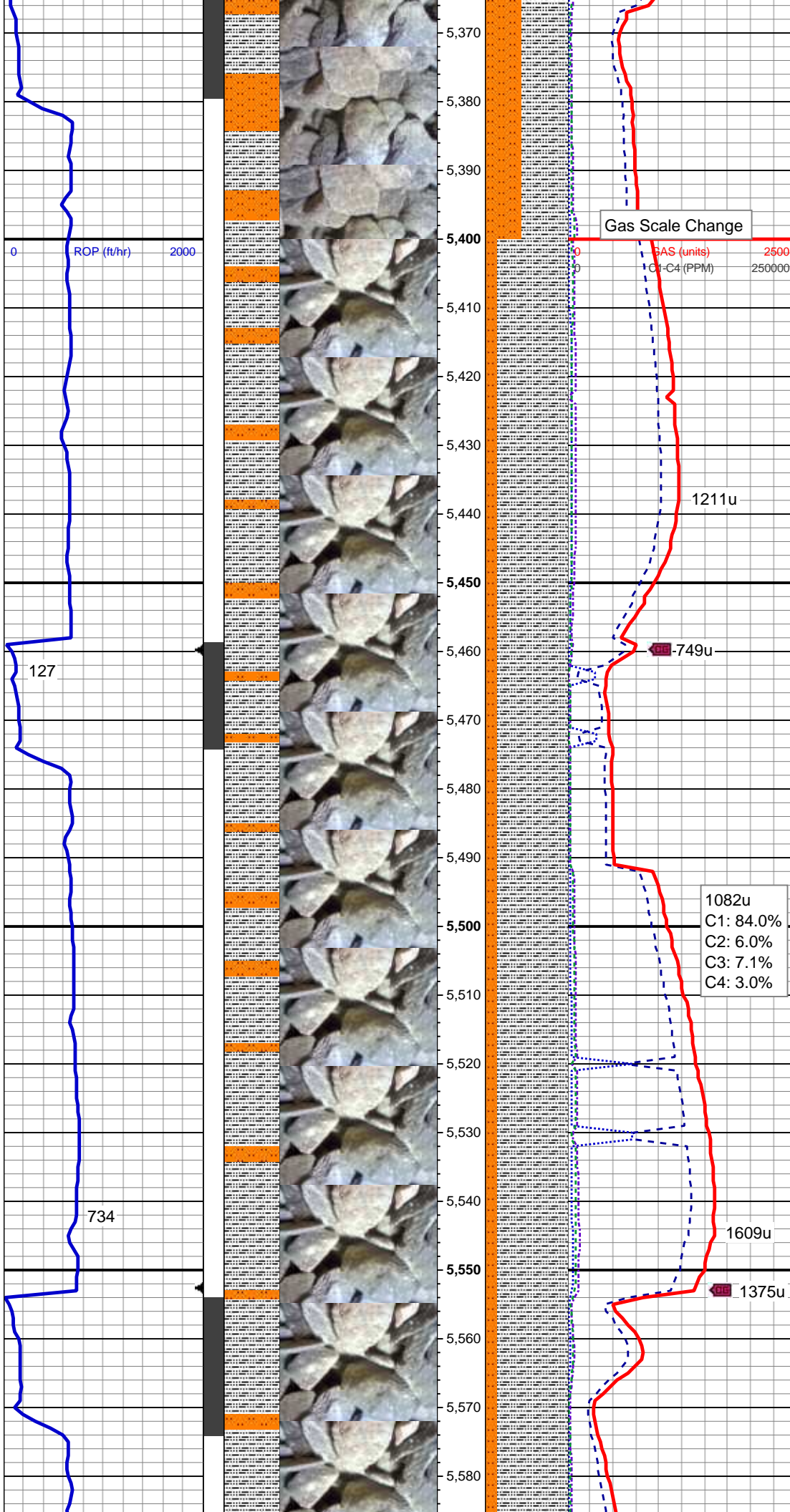




MD: 5,206'  
TVD: 5,177.36'  
Inclination: 6.05°  
Azimuth: 217.46°  
VS: -248.98'

55% SLTY SH: med-dk gy, mod  
frm-brit, sl fiss ip, sb blkly-plty, arg -  
sly mtx, sl calc, 45% SLTST: lt-med  
gy, sdy ip, sft-mod frm, brit-fri, sb  
blkly-sb plty, gt tex, sly-arg mtx, sl  
calc, occ glau, rr ss, tr mics frags,  
nsfoc

MD: 5,300'  
TVD: 5,270.72'  
Inclination: 7.27°  
Azimuth: 224.41°  
VS: -255.9'



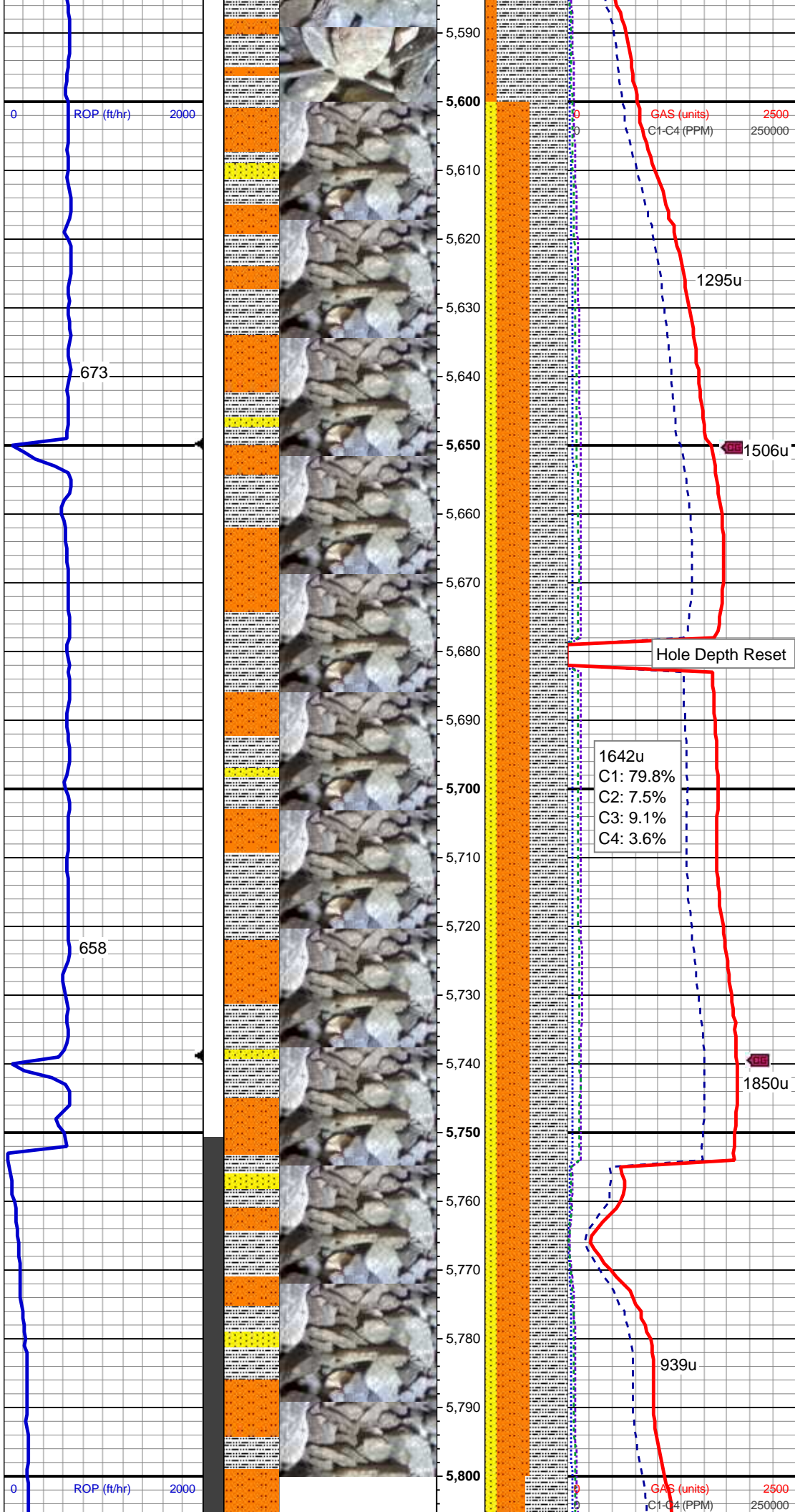
MD: 5,395'  
TVD: 5,364.81'  
Inclination: 8.63°  
Azimuth: 228.45°  
VS: -265.16'

MD: 5,490'  
TVD: 5,458.59'  
Inclination: 9.69°  
Azimuth: 232.79°  
VS: -276.56'

85% SLTY SH: med-dk gy, mod  
frm-brit, sl fiss ip, sb blkly-plty, arg -  
sly mtx, sl calc, 15% SLTST: lt-med  
gy, occ dk gy, sdy ip, sft-mod frm,  
brit-fri, sb blkly-plty, gt tex, sly-arg  
mtx, sl calc, rr glau, tr mics frags,  
nsfoc

1082u  
C1: 84.0%  
C2: 6.0%  
C3: 7.1%  
C4: 3.0%





TVD: 5,551.08'  
Inclination: 10.89°  
Azimuth: 227.45°  
VS: -289.06'

MD: 5,679'  
TVD: 5,644.63'  
Inclination: 9.17°  
Azimuth: 224.4°  
VS: -300.62'

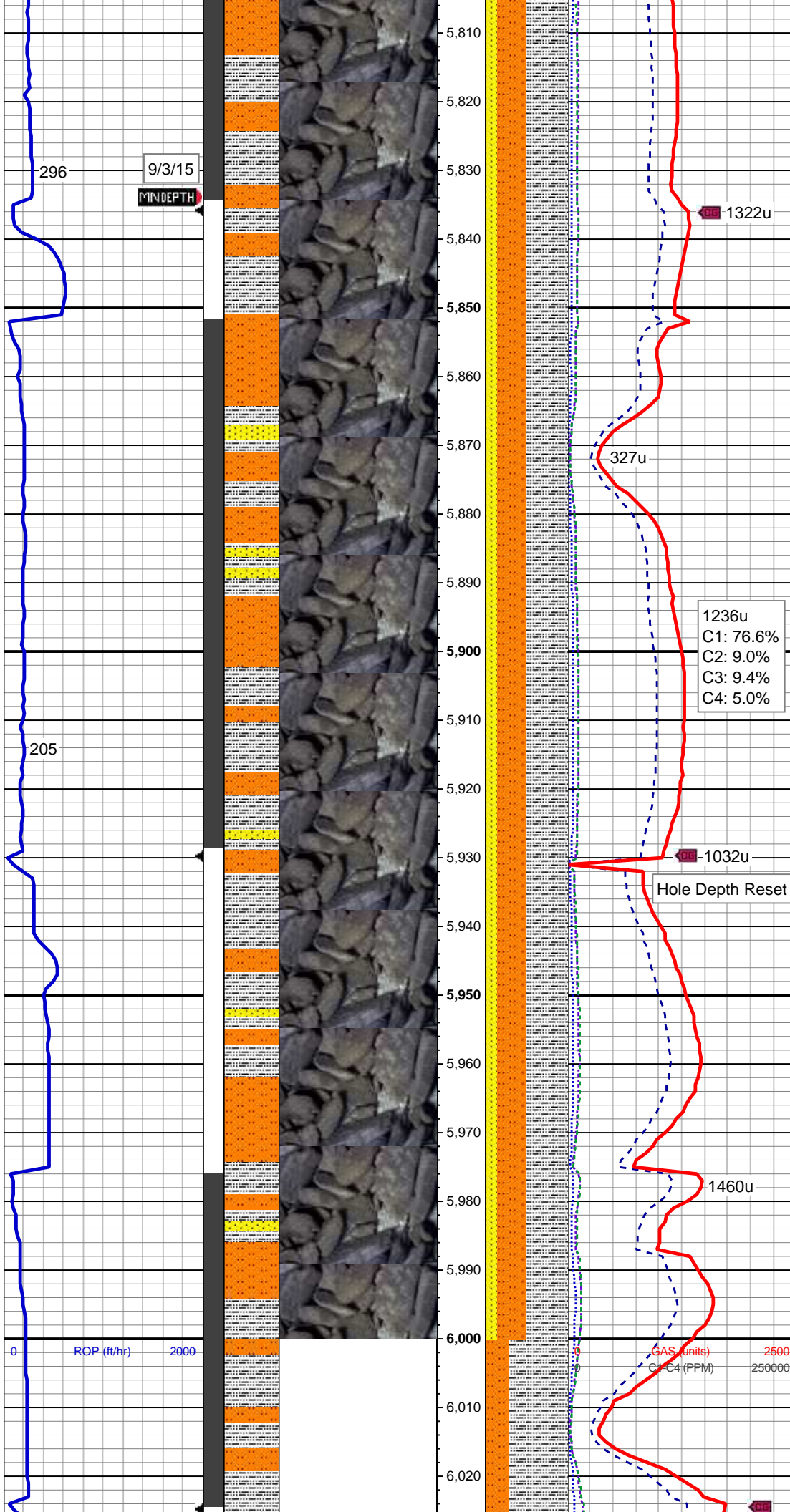
45% SLTY SH: med-dk gy, mod frm-brit, sl fiss ip, sb blkly-plty, arg - slty mtx, sl calc, 40% SLTST: lt-med gy, occ dk gy, sdy ip, sft-mod frm, brit-fri, sb blkly-plty, gt tex, slty-arg mtx, sl calc, rr glau, 15% SS: offwht-wh, com lt gy, clr-trnsl grd, mod-v hd, brit, vf-f gr, sb rd-sb ang, mod-w srt, cons, w cmted, nsfoc

KOP @ 5752' MD

MW IN 9.3 VIS 33

MW OUT 9.6 VIS 45

MD: 5,774'  
TVD: 5,738.31'  
Inclination: 10.05°  
Azimuth: 209.95°  
VS: -309.66'



MW IN 9.25 VIS 29

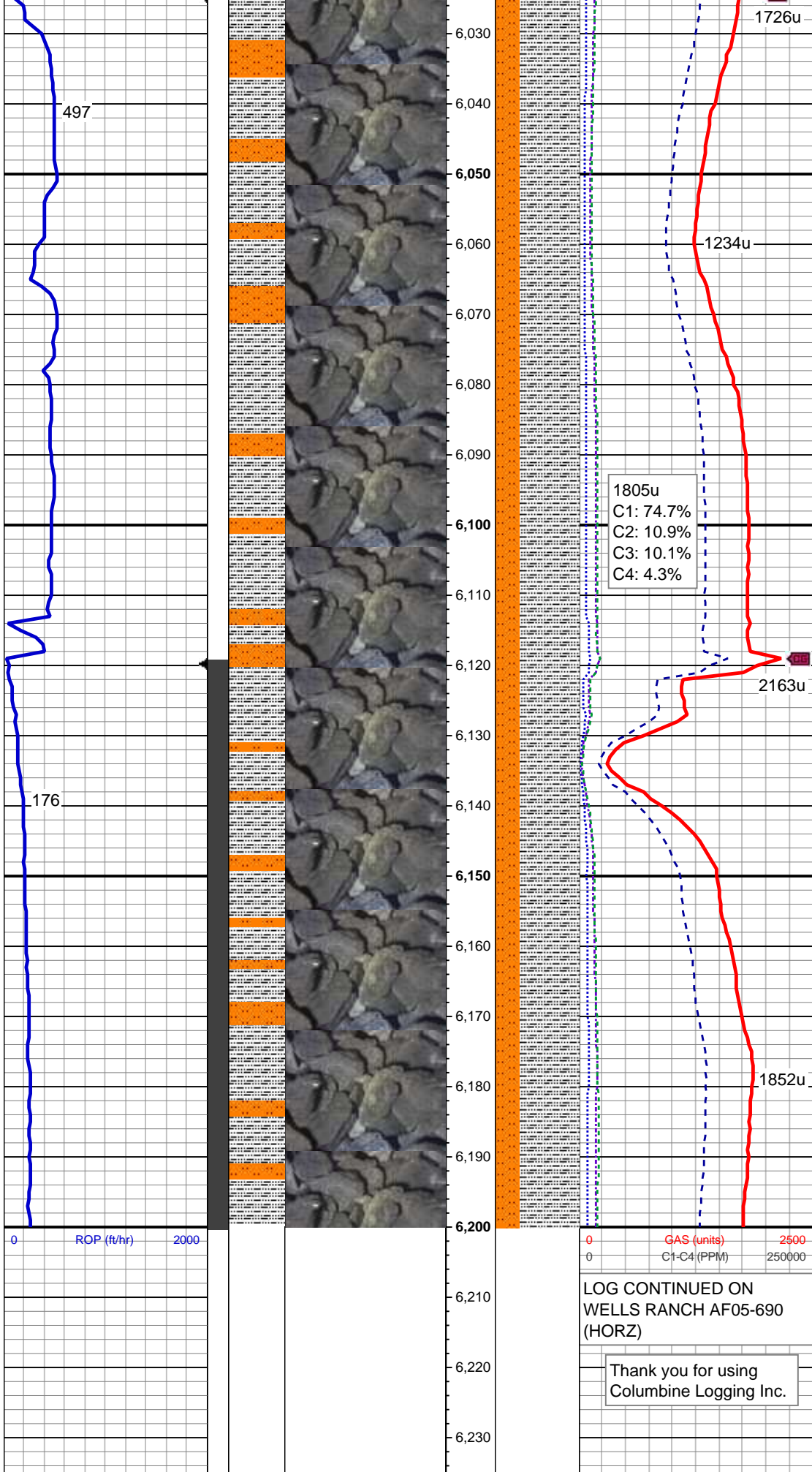
MW OUT 9.3 VIS 31

MD: 5,868'  
TVD: 5,828.56'  
Inclination: 22.27°  
Azimuth: 180.01°  
VS: -313'

50% SLTY SH: med-dk gy, mod  
frm-brit, sl fiss ip, sb blkly-plty, arg -  
slyt mxt, sl calc, 35% SLTST: lt-med  
gy, occ dk gy, sdy ip, sft-mod frm,  
brit-fri, sb blkly-plty, gt tex, slyt-arg  
mxt, sl calc, occ glau, 15% SS:  
offwht-wh, com lt gy, clr-trnsl grd,  
mod-v hd, brit, vf-f gr, sb rd-sb ang,  
mod-w srt, cons, w cmted, nsfoc

MD: 5,963'  
TVD: 5,913.61'  
Inclination: 30.56°  
Azimuth: 169.62°  
VS: -307.35'





MD: 6,058'  
TVD: 5,994.85'  
Inclination: 32.22°  
Azimuth: 153.65°  
VS: -290.3'

70% SLTY SH: med-dk gy, mod  
frm-brit, sl fiss ip, sb blkly-plty, arg -  
silty mtx, sl calc, 30% SLTST: lt-med  
gy, occ dk gy, sdy ip, sft-mod frm,  
brit-fri, sb blkly-plty, gt tex, silty-arg  
mtx, sl calc, tr glau, nsfoc

MD: 6,152'  
TVD: 6,074.41'  
Inclination: 32.25°  
Azimuth: 143.64°  
VS: -262.98'

LOG CONTINUED ON  
WELLS RANCH AF05-690  
(HORZ)

Thank you for using  
Columbine Logging Inc.