



Realtime Log

Natural Formation Evaluation  
Gamma Ray

Scale:	1:240 TVD		Company: Noble Energy		Well: KIDD LD22-780		Field: Weld County		Region: Continental US		Country: United States												
Status:	Final Print		Surface Location:		Latitude: 40° 43' 51.060" N		Longitude: 103° 51' 17.388" W		SEC: 22		TWN: 9N												
API Number:	05123415890000		Elevation: 4822.00 ft.		Above P.D.		KB: N/A		DF: 4852.00 ft.		GL: 4822.00 ft.												
Permanent Datum (P.D.):	Ground Level		Rig Floor		Driller's Depth		Elevations:		Directional														
Log Measured From:	30.00 ft.		4822.00 ft.		Above P.D.		N/A		4852.00 ft.		4822.00 ft.												
Depth Reference:																							
Interval Logged				Dates				Magnetic Field Reference															
Top: 711.0 ft. Date From: 03/Sep/2015 Dip Angle: 67.39 ° Azl Reference North: Grid																							
Bottom: 10444.0 ft. Date To: 07/Sep/2016 Total Mag to Reference																							
Spud Date: 02/Sep/2015 Field Strength: 52885.2 nT North Correction: 6.95 °																							
Borehole Record												Casing Record											
Hole Size		From		To		Size		Weight		From		To											
13.500 in.		Surface		765.0 ft.		9.625 in.		36.00 lb/ft		Surface		755.0 ft.											
8.750 in.		765.0 ft.		6228.0 ft.		7.000 in.		26.00 lb/ft		Surface		6218.0 ft.											
6.125 in.		6228.0 ft.		10500.0 ft.																			
Mud Record												Deviation Record											
Type		From		To		Hole Size		Interval		Inc / Az (Start)		Inc / Az (End)											
Water Based		Surface		10500.0 ft.		13.500 in.		765.0 ft.		0.0 ° / 0.0 °		1.7 ° / 251.0 °											
						8.750 in.		5463.0 ft.		1.7 ° / 251.0 °		87.2 ° / 1.2 °											
						6.125 in.		4272.0 ft.		87.2 ° / 1.2 °		89.8 ° / 1.7 °											
										/		/											
										/		/											
										/		/											
Acquisition System Software Version												Other											
Advantage		2.20U4		Rig: / Contractor:		H&P 326		/ Noble Energy															
PAT S		6.4.1.34		Job No:		7469123		/ D&E															
				District: / Unit:		RMD																	

INTEQ does not guarantee the accuracy or correctness of interpretations provided in or from this log. Since all interpretations are opinions based on measurements, INTEQ shall under no circumstances be responsible for consequential damages or any other loss, costs, damages or expenses incurred or sustained in connection with the use of any such interpretations. INTEQ disclaims all expressed and implied warranties related to this service. INTEQ's liabilities and obligations shall be governed by INTEQ's Standard Terms and Conditions.

Log Run Summary													
LWD Run No.	BHA Run No.	Bit Run No.	Bit Size (in.)	Bit Type	Bit Gauge Length (in.)	Assembly Type	Logged Interval		Bit Depth Interval		Date / Time		Circ. Time (hrs.)
							Top	Bottom	From	To	Start	End	
							(ft.)	(ft.)	(ft.)	(ft.)			
1	1	1	8.750	PDC	3.000	Steerable	711.0	6175.0	765.0	6228.0	03/Sep/2015 08:30	04/Sep/2015 14:18	24.7
2	2	2	6.125	PDC	3.000	Steerable	6175.0	10444.0	6228.0	10500.0	05/Sep/2015 16:30	07/Sep/2015 04:00	32.8

Crew									
Name		Arrive	Depart	Name		Arrive	Depart	Name	
		Wellsite	Wellsite			Wellsite	Wellsite		
Austin Small		02/Sep/2015	07/Sep/2015	Nicholas Gerard		02/Sep/2015	07/Sep/2015	Mike Gurnsey	
Ken Perry		03/Sep/2015	07/Sep/2015	Terry Marshall		03/Sep/2015	07/Sep/2015		

Mud Properties Record

Date / Time	LWD Run No.	Measured Depth (ft.)	Mud Type	Density (ppg)	Viscosity (cp)	pH	Fluid Loss (cc)	Oil / Water	Source	Total Chlorides (ppm)	K+ (%)
04/Sep/2015 16:00	1	5400.0	Water Based	9.8	43	9.5	N/A	0/92.2	Flow Line	1200	N/A
06/Sep/2015 04:00	2	7729.0	Water Based	10.0	39	10.1	N/A	0/91.4	Flow Line	1600	N/A
07/Sep/2015 04:00	2	10369.0	Water Based	10.1	37	9.4	N/A	0/91.2	Flow Line	1600	N/A

Mnemonics

Curve	Description	Units
GRAX	Gamma Ray Apparent, 0.5 ft. Avg.	API
ROPA	Rate of Penetration, 3.0 ft. Avg	ft/hr
TCDX	Downhole Temperature	degF
WOBA	Surface Weight on Bit, 1.0 ft. Avg	klbs

Equipment and Service Data

LWD Run No.	Tool	Serial Number	Measurement	Bit Offset (ft.)	Max O.D. (in.)	Min I.D. (in.)
1	DIR	11801247	Directional	56.19	6.750	0.000
1	SRIG	12866799	Gamma	52.77	6.750	3.250
2	DIR	12546339	Directional	60.59	4.750	2.750
2	SRIG	11732967	Gamma	57.17	4.750	2.750

Service and Tool Mnemonics

Mnemonic	Name	Description
DIR	Directional	Wellbore directional survey
SRIG	Inclination and Gamma	Probe based gamma ray and inclination module

Comments

(1) Baker Hughes INTEQ run 1 utilized 6 3/4 inch NaviGamma services (Gamma Ray and Directional) behind a 8 3/4 inch bit and steerable assembly from 711 feet to 6228 feet MD (711 feet to 5829 feet TVD).
(2) Baker Hughes INTEQ run 2 utilized 4 3/4 NaviGamma services (Gamma Ray and Directional) behind a 6 1/8 inch bit and steerable assembly from 6228 feet to 10500 feet MD (5829 to 5797feet TVD).
(3) Depth measurements are obtained from a depth control system (Pason EDR) not supplied or operated by Baker Hughes Inteq. Due to a lack of control by Baker Hughes Inteq logging engineers, depth calibrations & measurements could not be independtly verified. Unverified depths supplied to Inteq are being used in present logging data.

Remarks

Number	Measured Depth (ft.)	Hole Section (in.)	LWD Run No.	Remark



Company : Noble Energy

Well : KIDD LD22-780

Interval : 780.00 - 5865.00 feet

Created : 07/Sep/2015 5:45:55 AM

Gamma Ray Apparent 0.5 ft Avg GRAX

0 150

API

TVD feet 1:240

Rate of Penetration 3.0 ft Avg ROPA

2000 0  
ft/hr

Downhole Temperature TCDX

0 200

degF

Surface Weight On Bit 1.0 ft Avg [WOBA]

0 100

klbf

800  
> Run 1

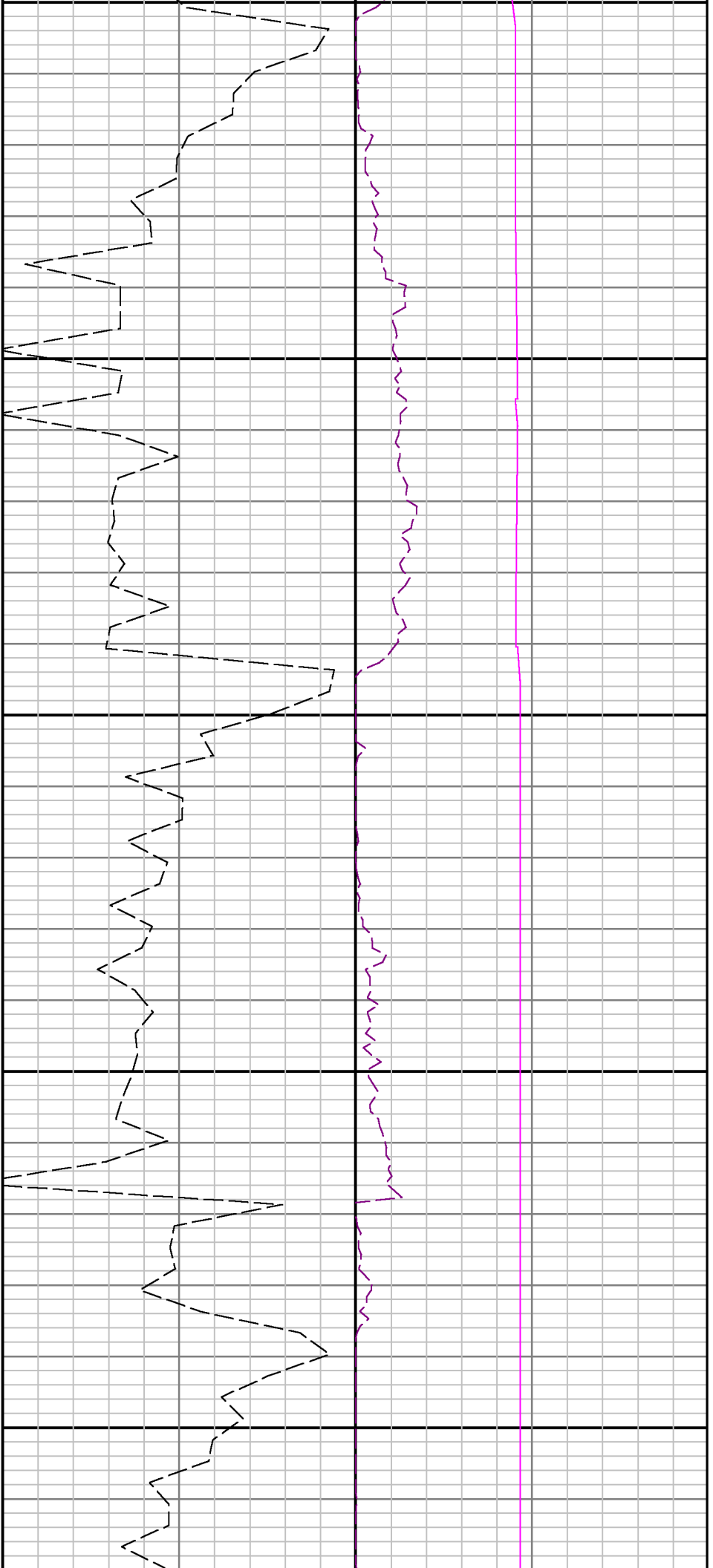
900

GRAX

ROPA

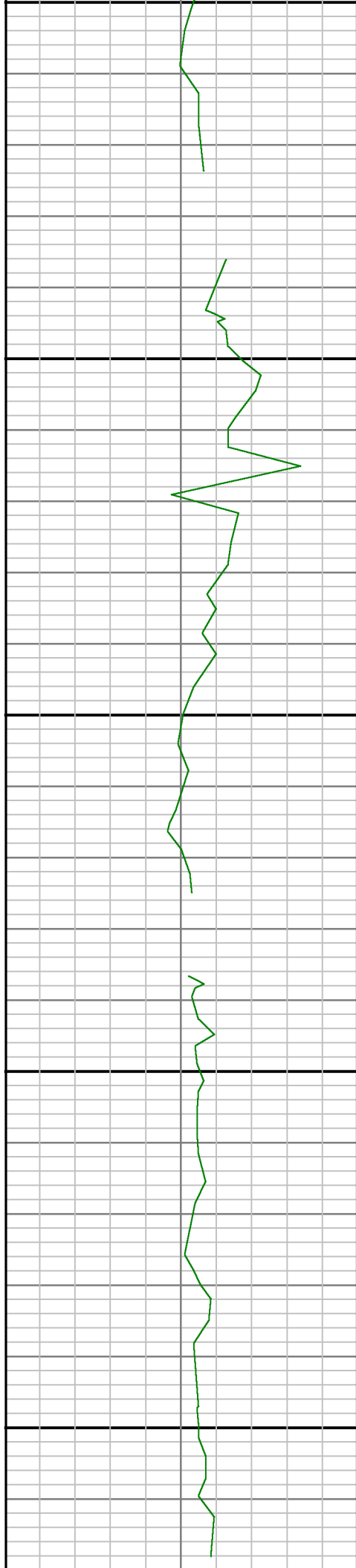
WOBA

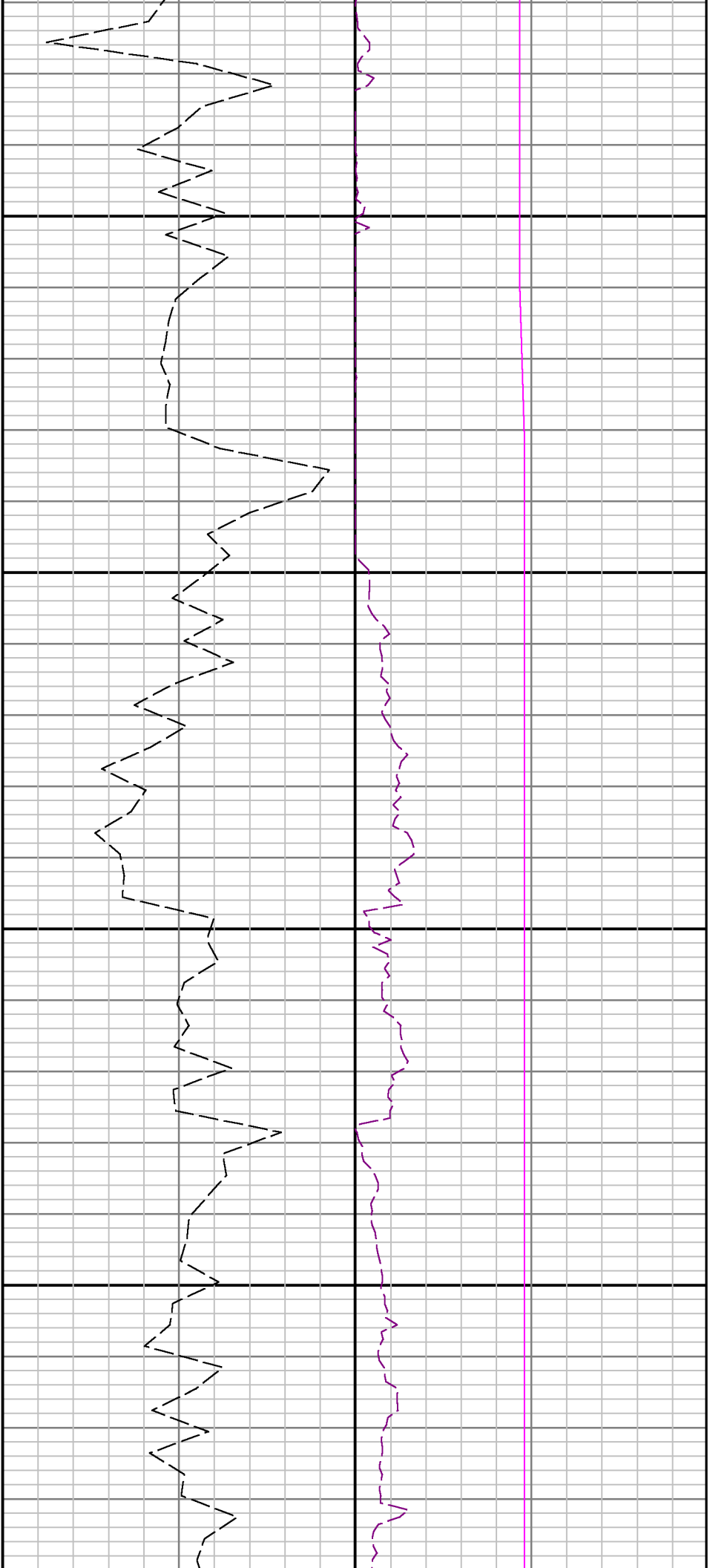
TCDX



1000

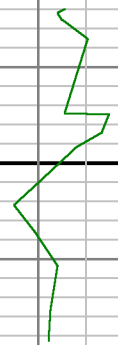
1100

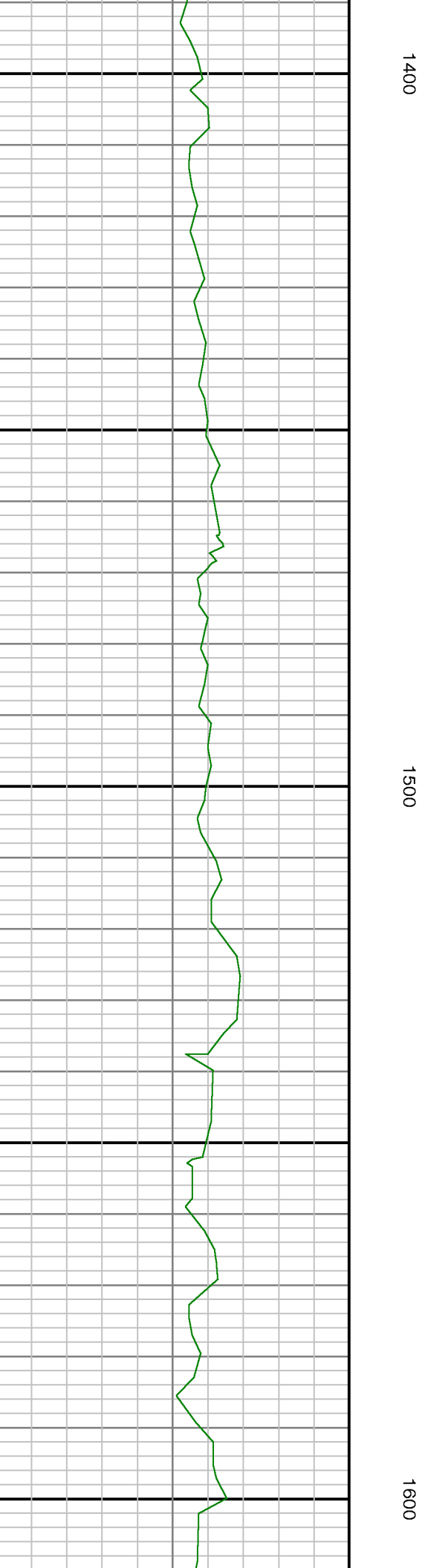
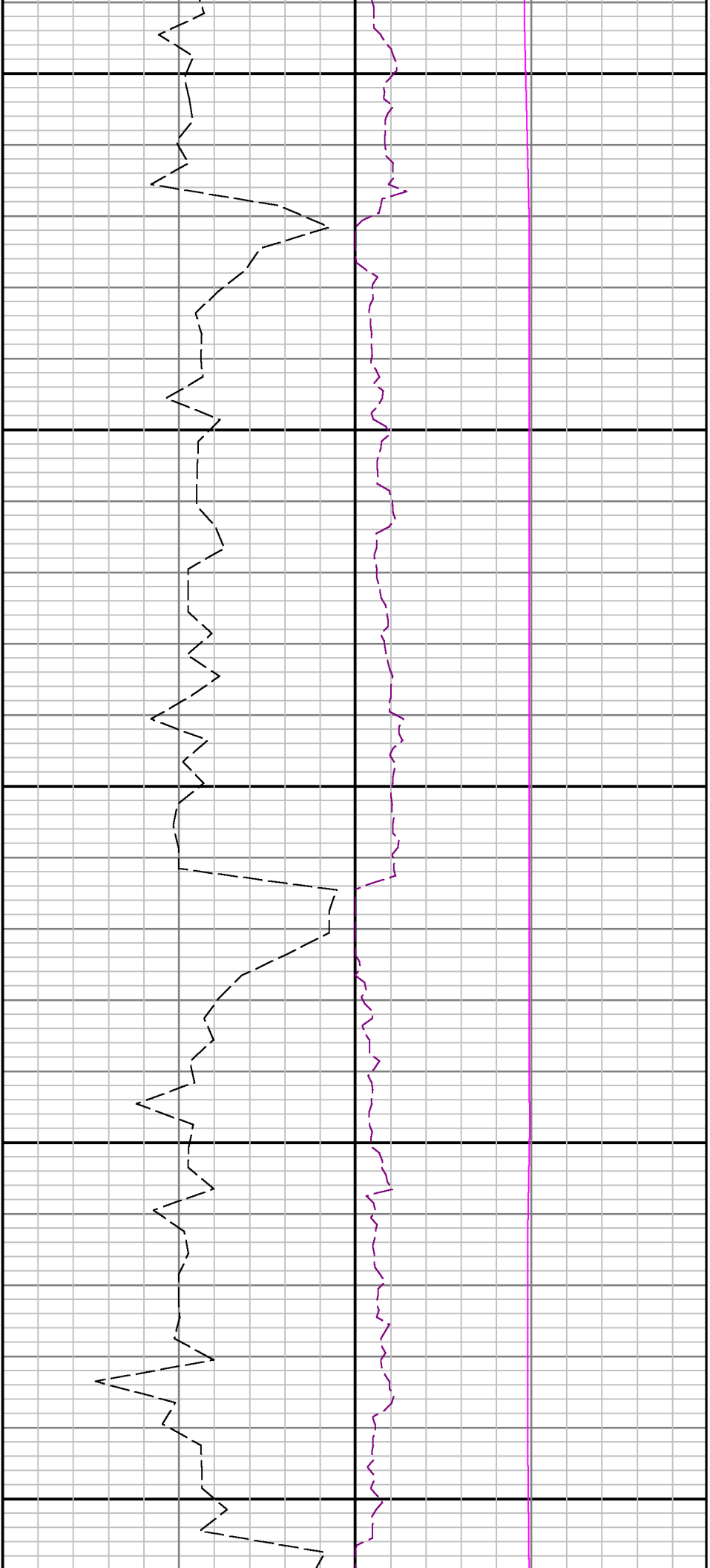




1200

1300

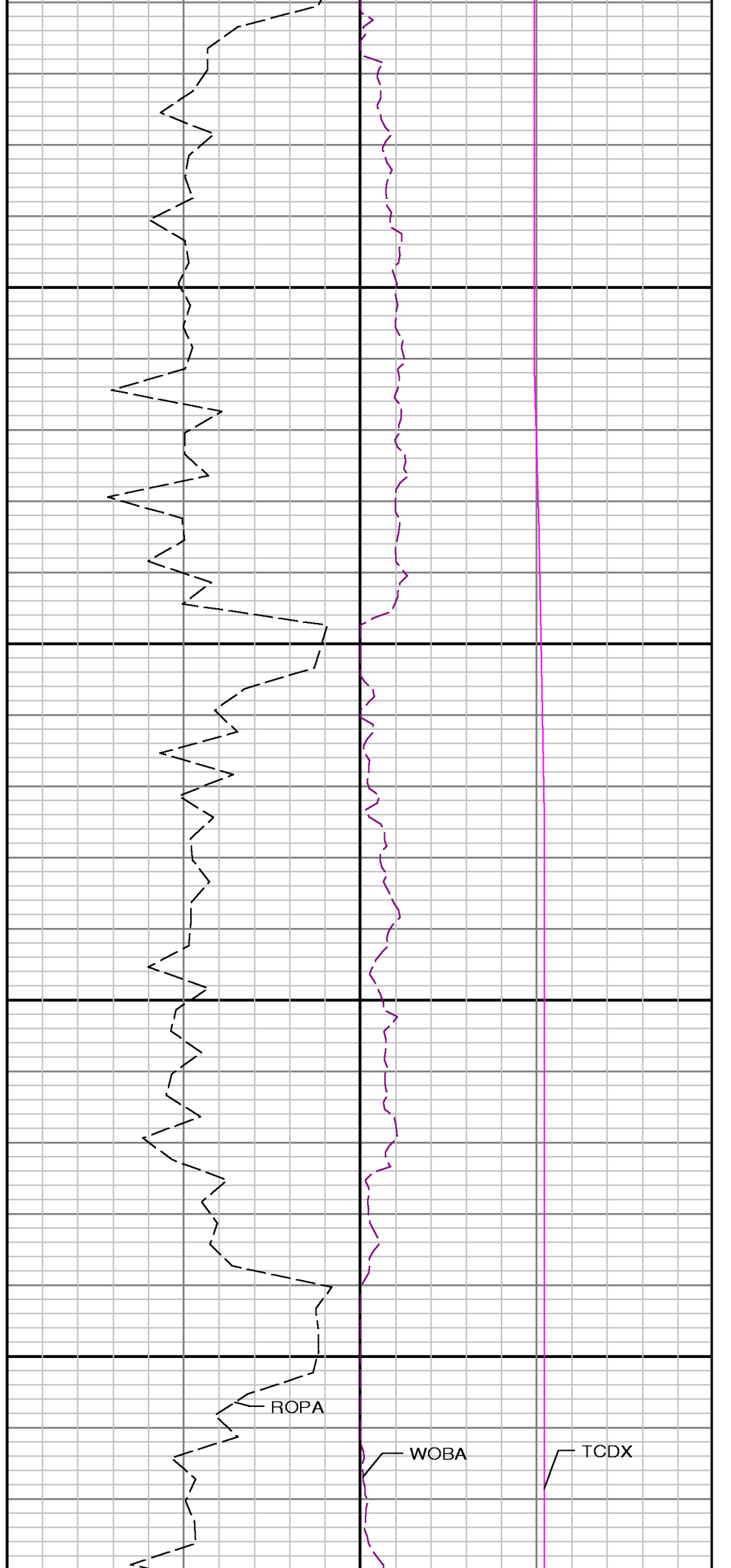


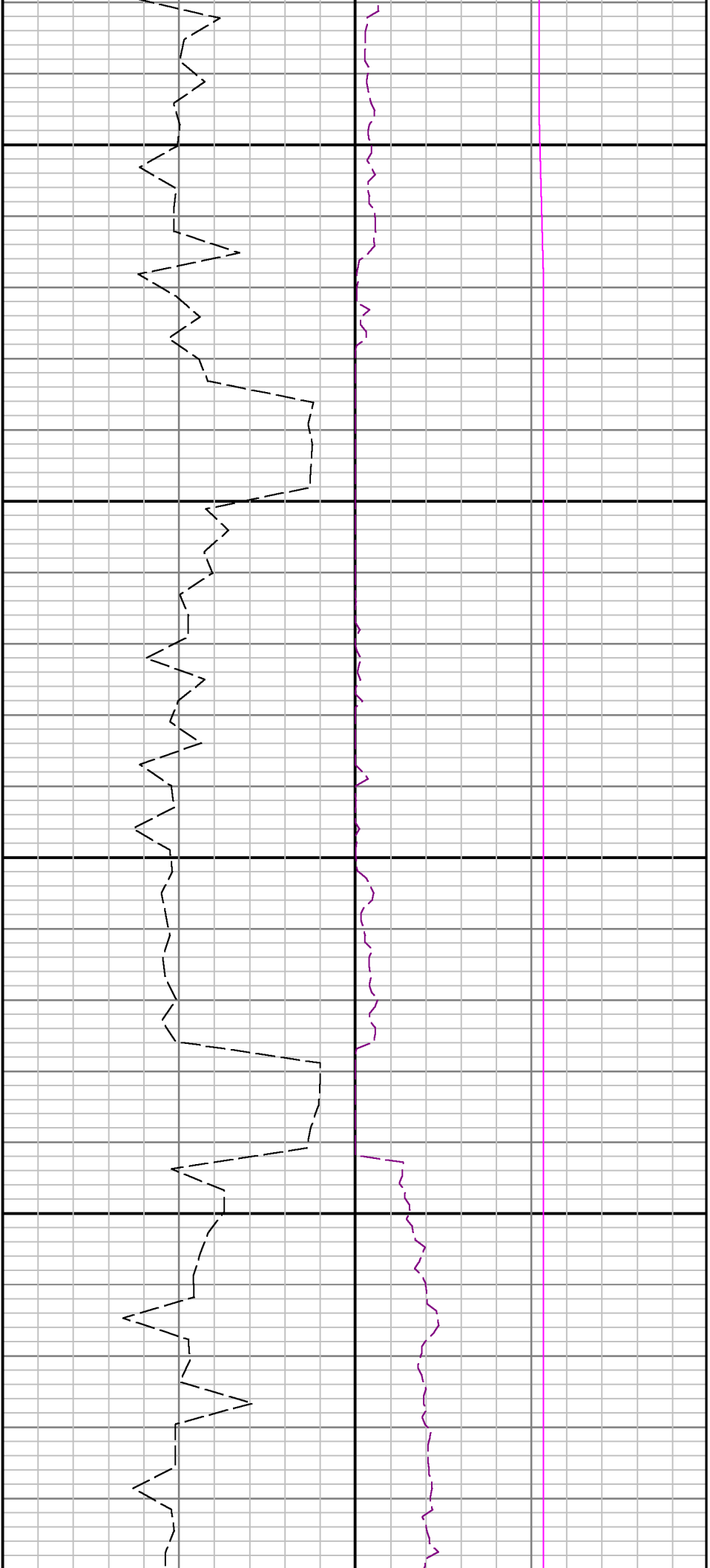




1700

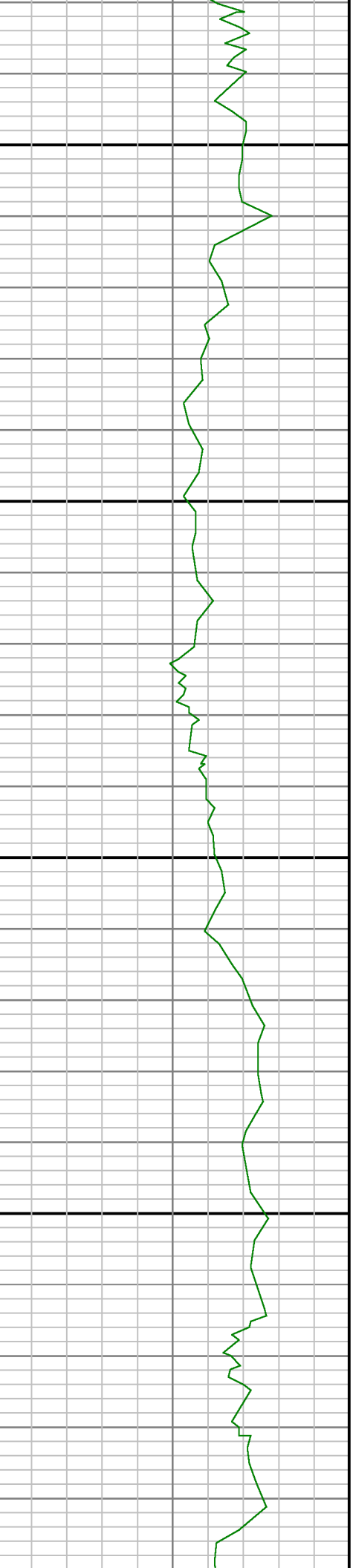
1800



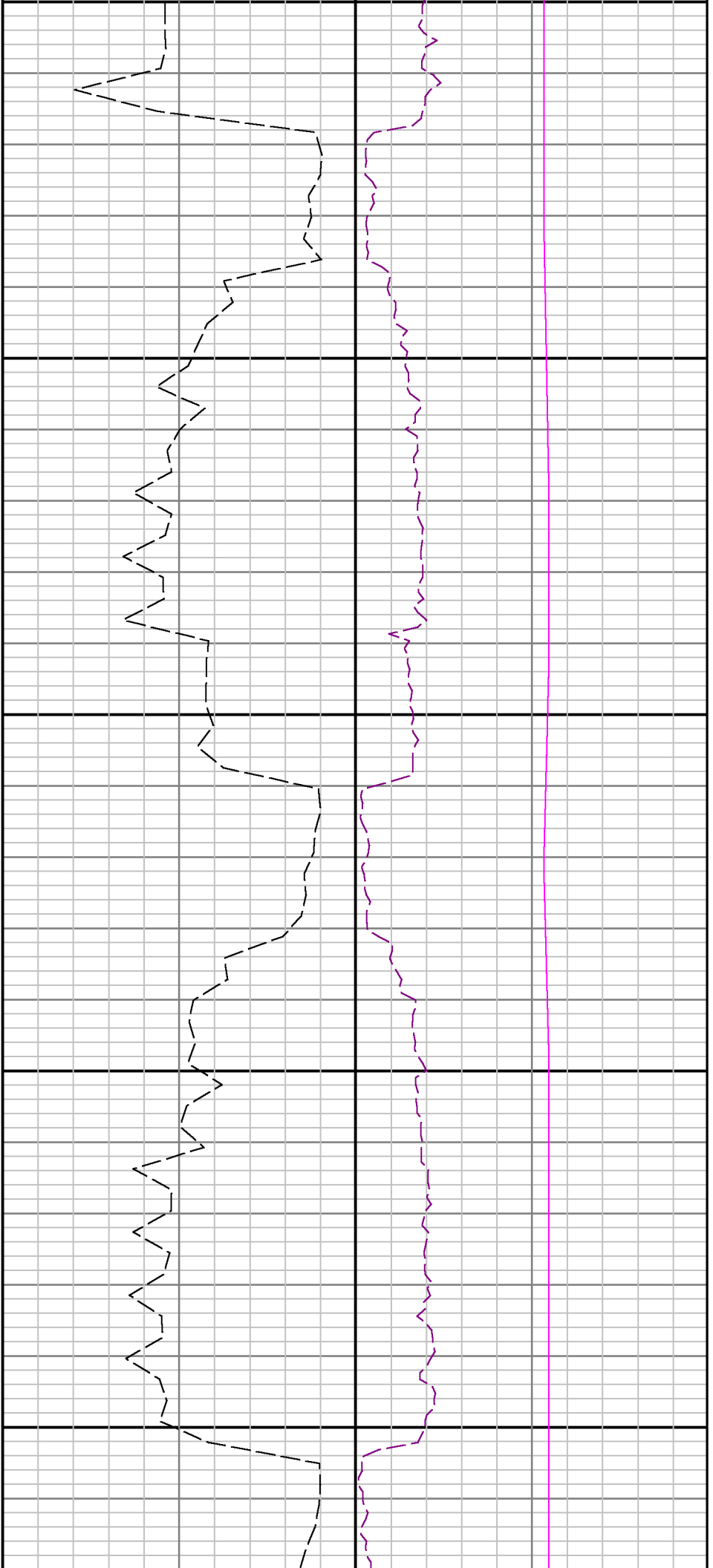


1900

2000

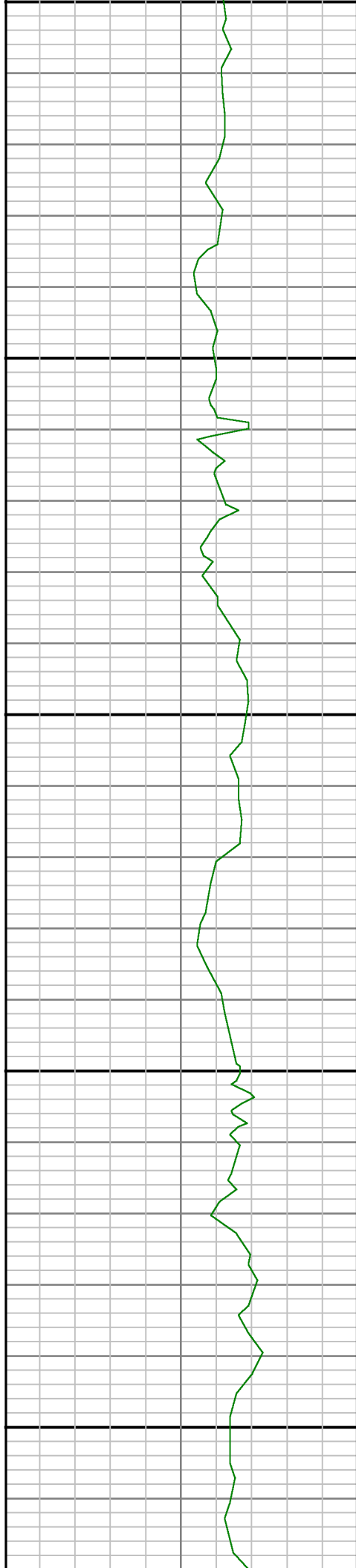


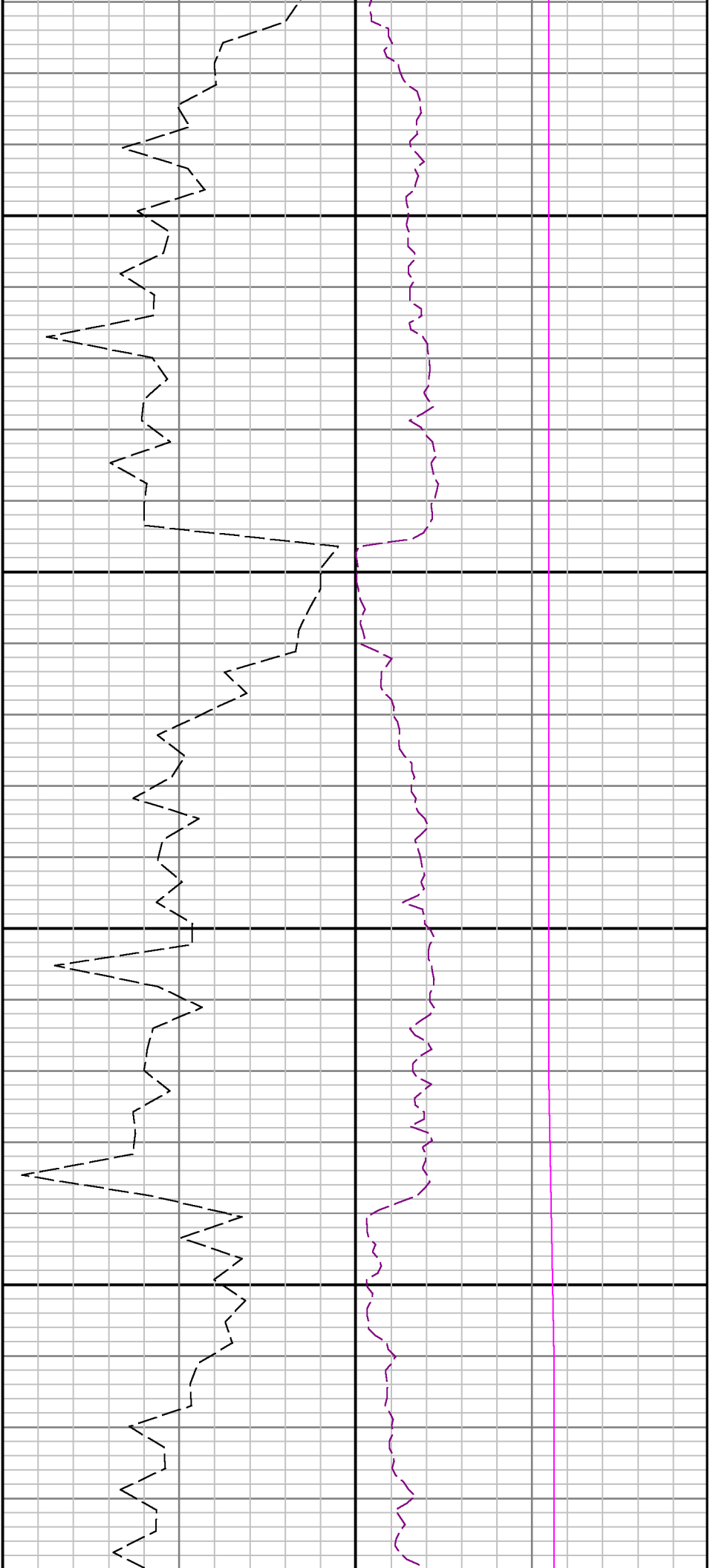




2100

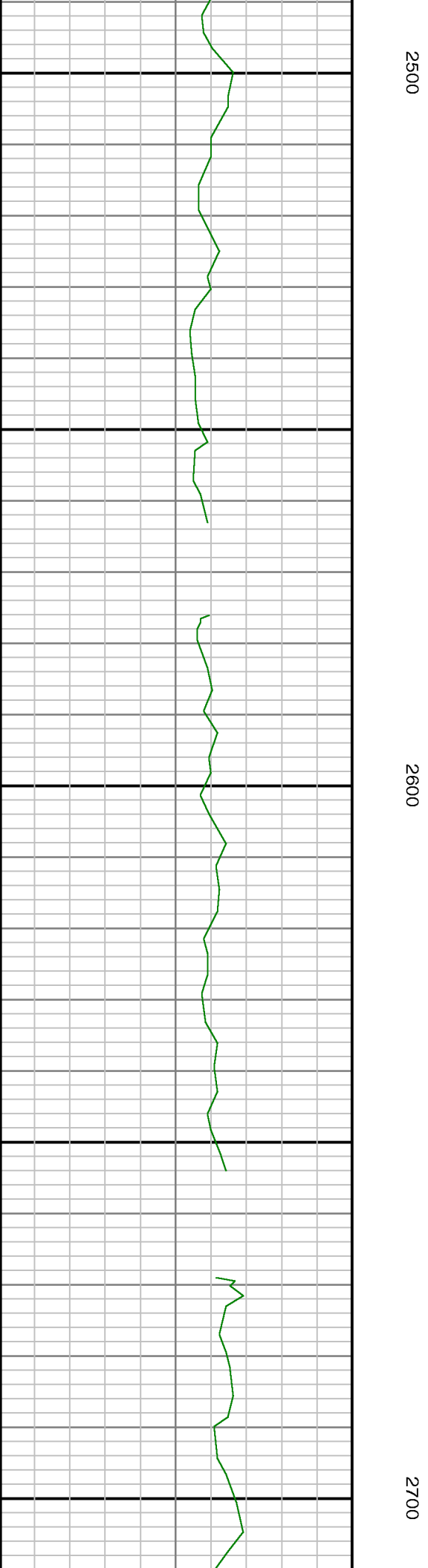
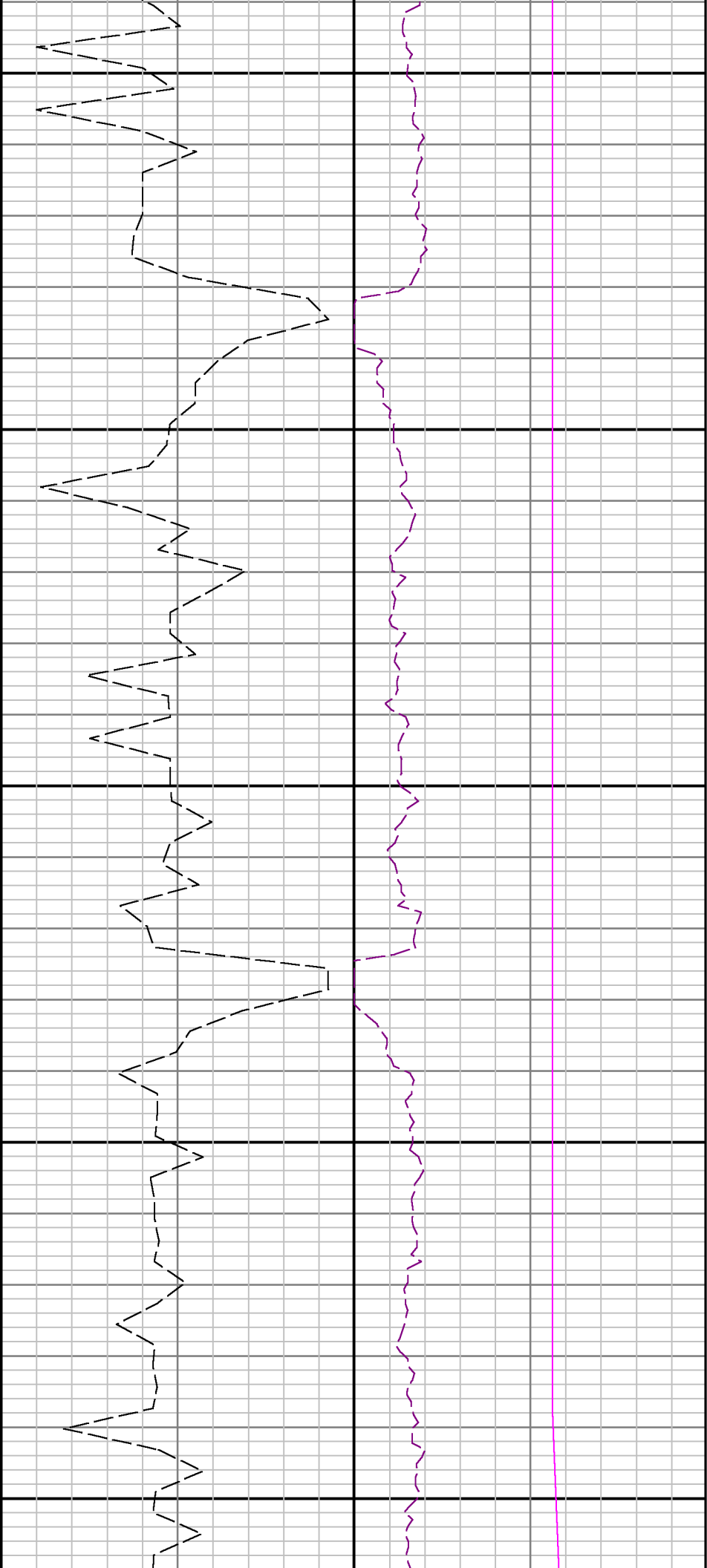
2200

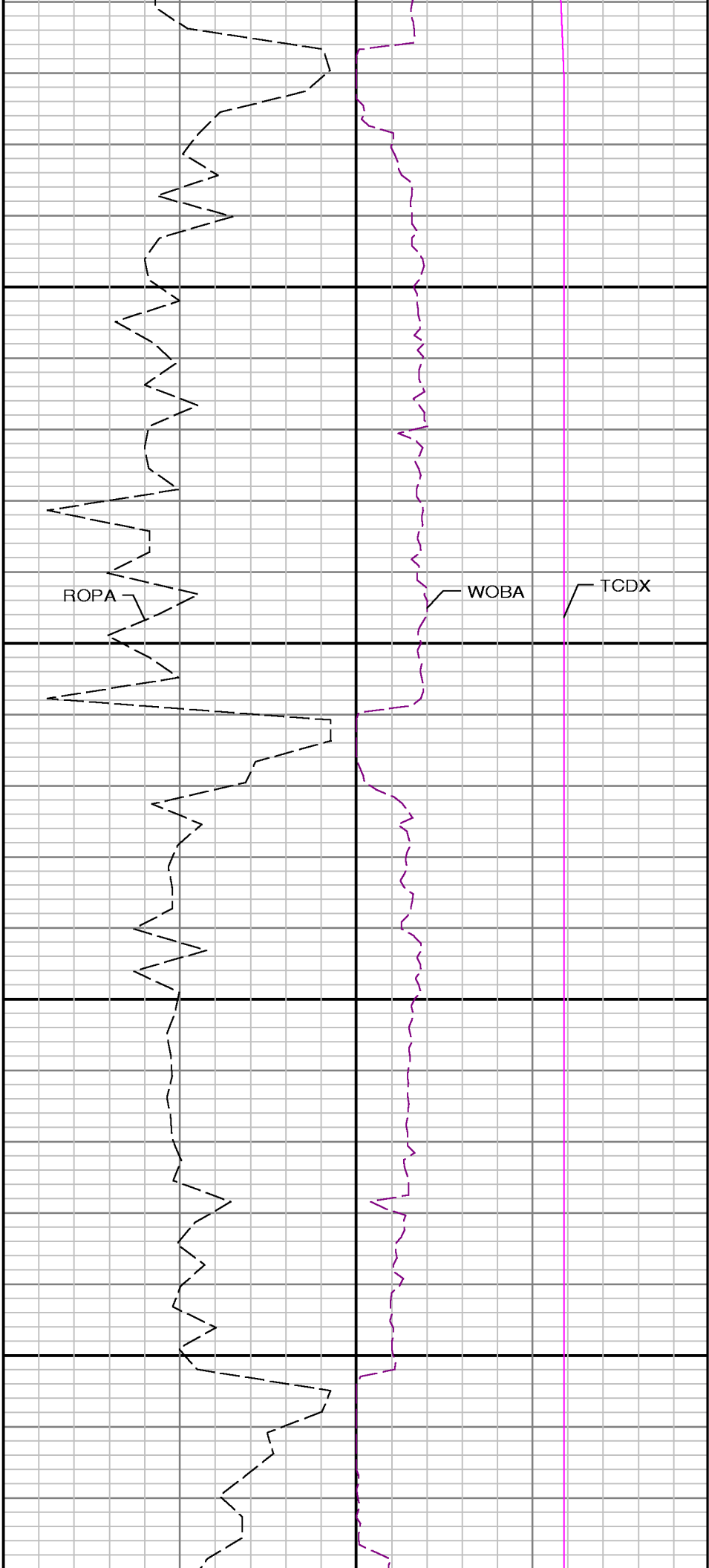




2300

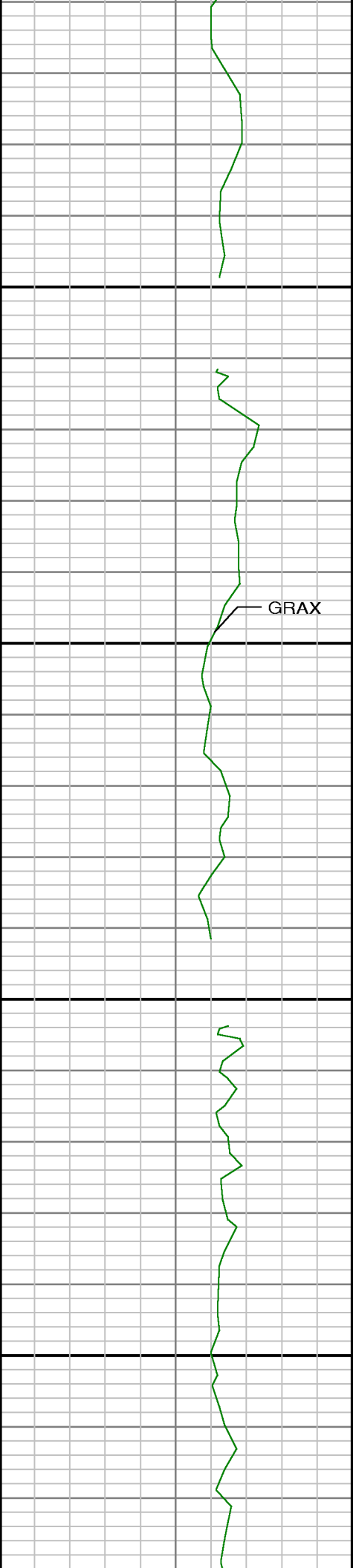
2400

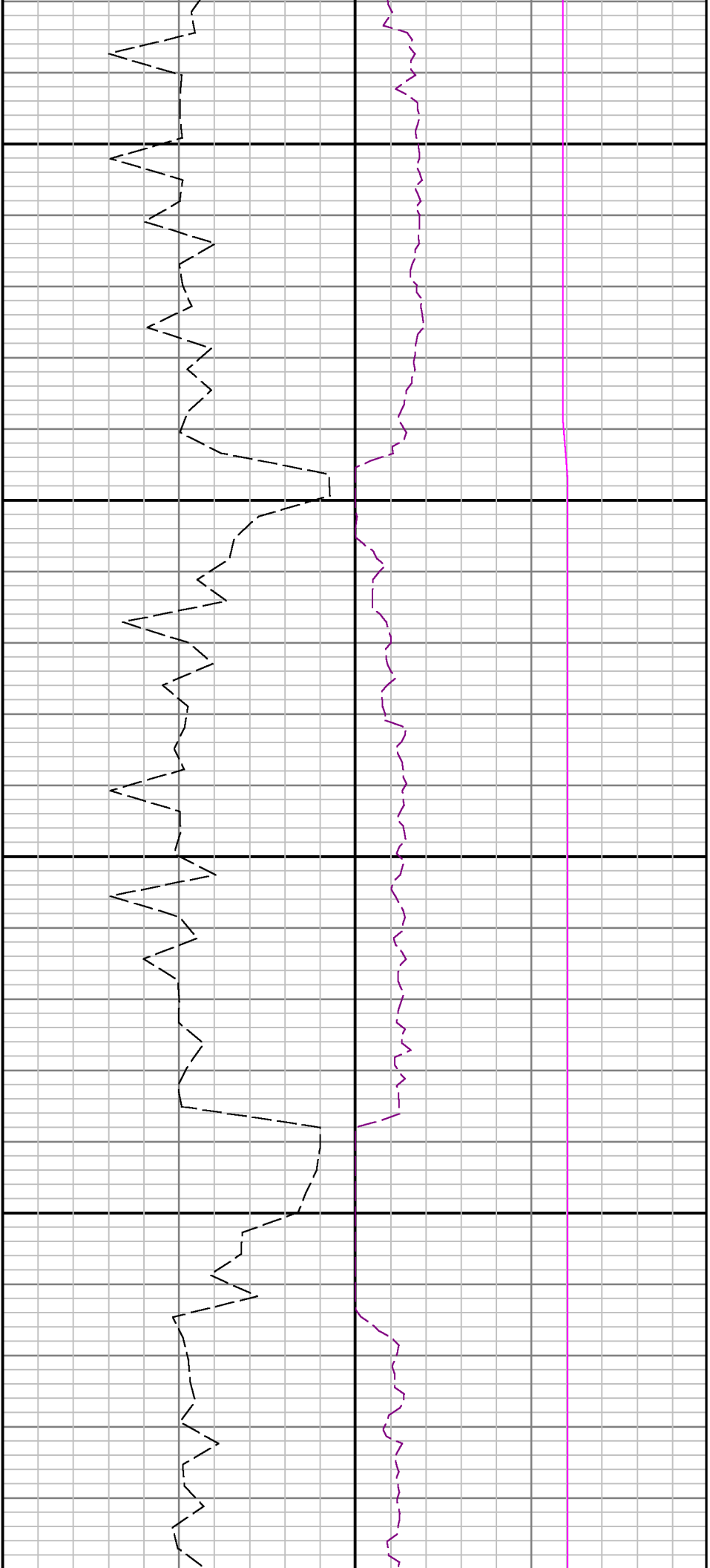




2800

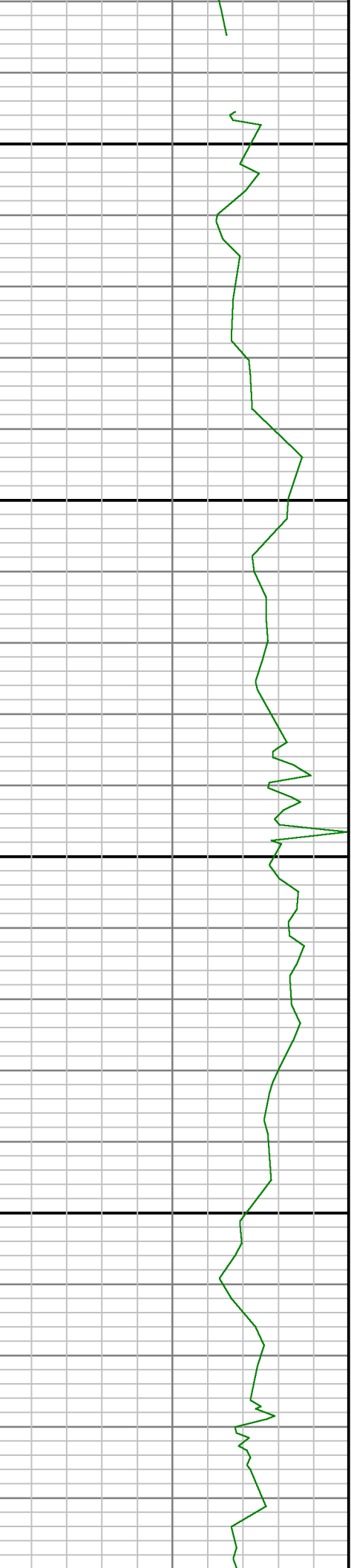
2900





3000

3100

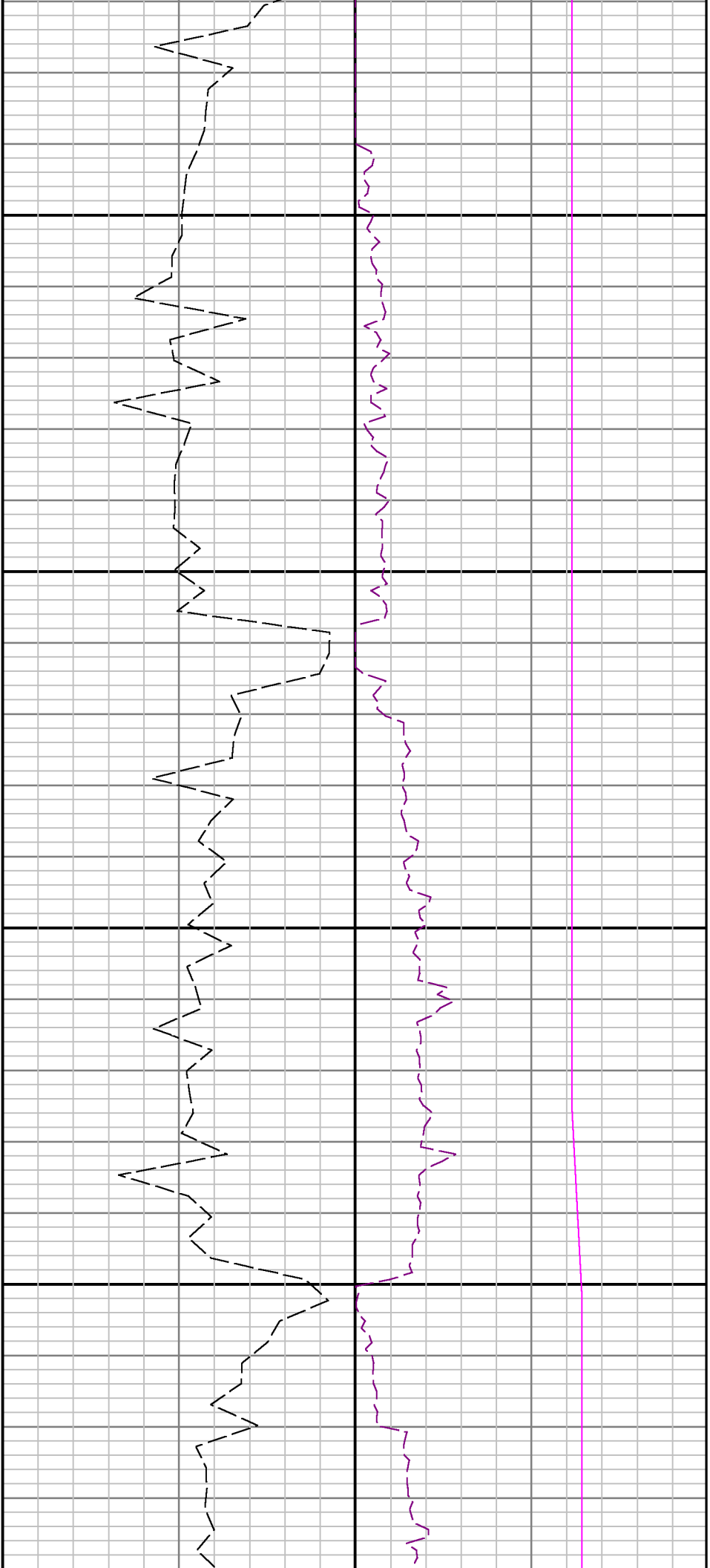




3200

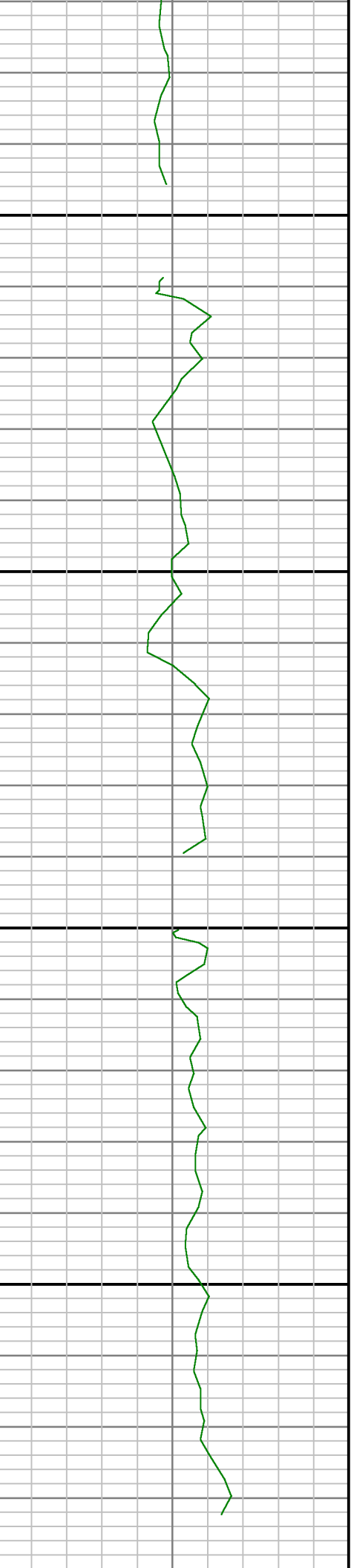
3300

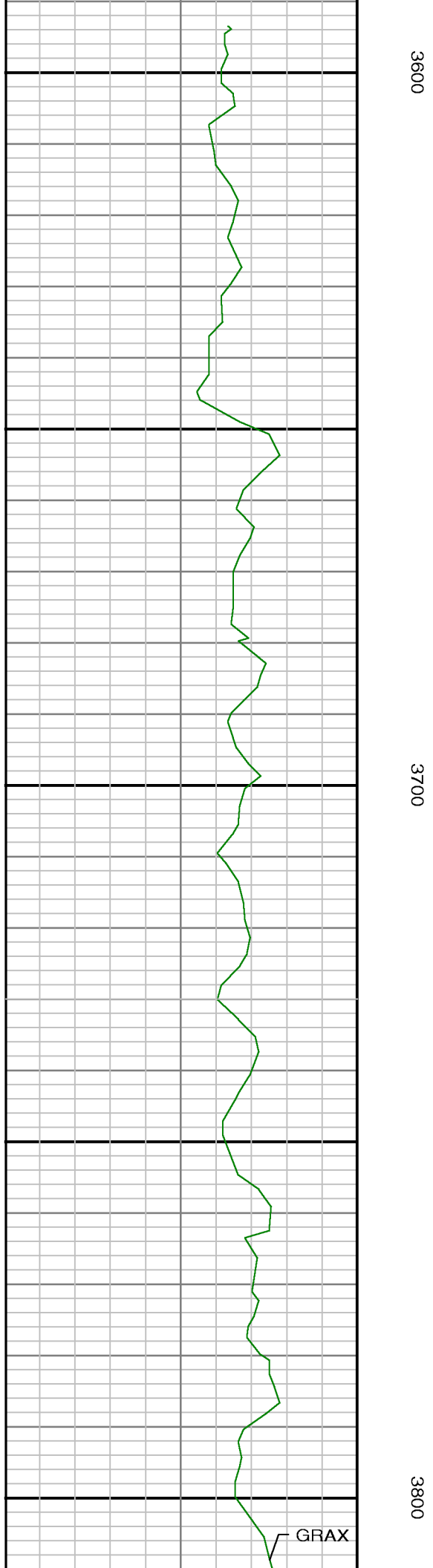
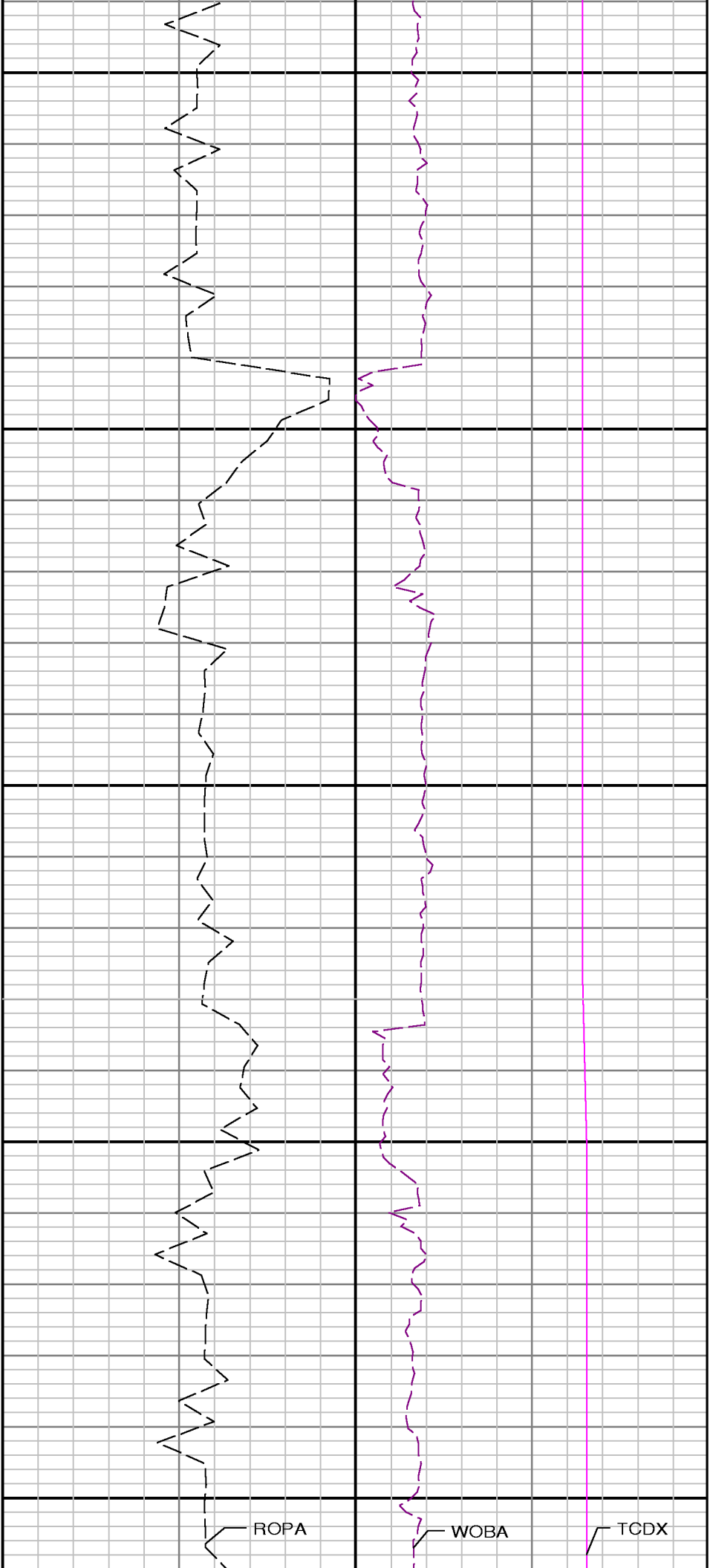




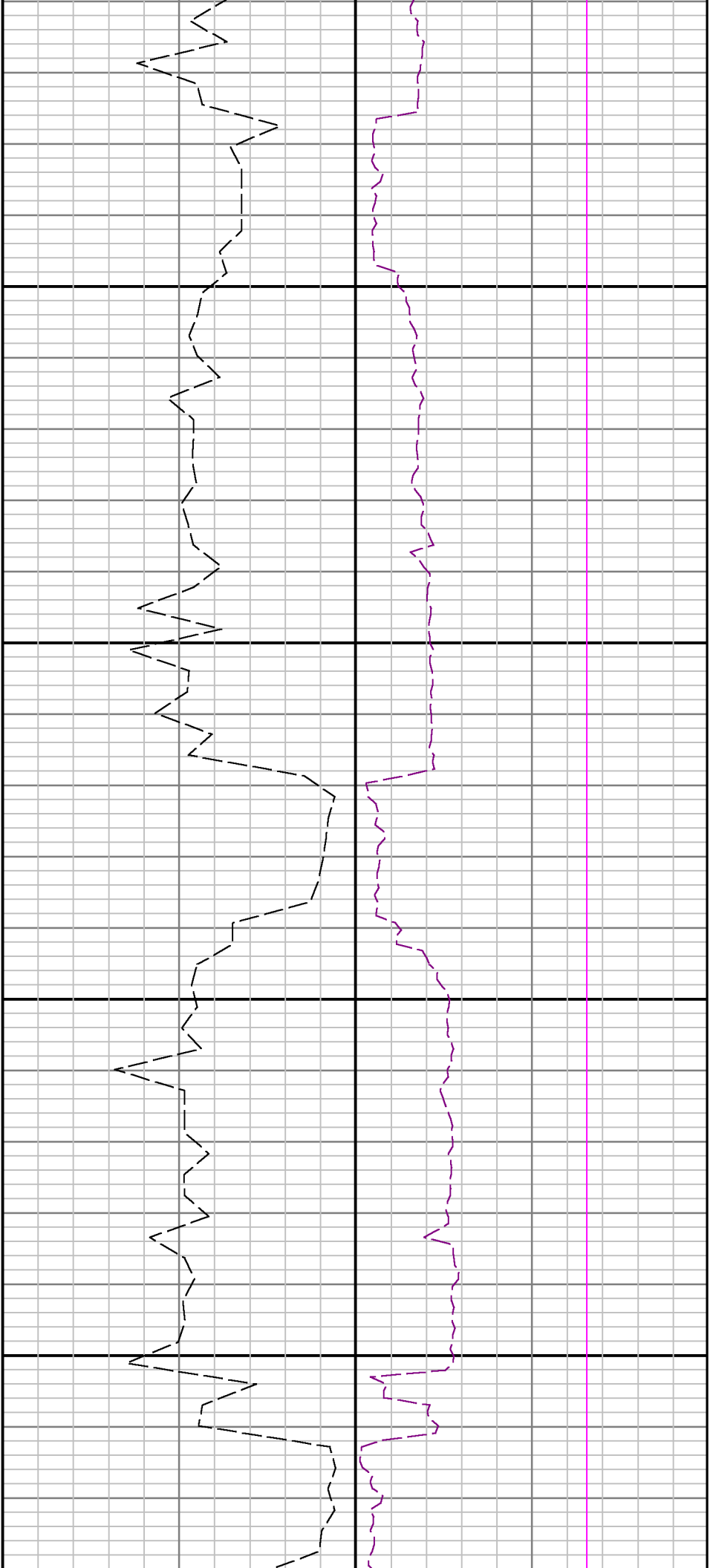
3400

3500



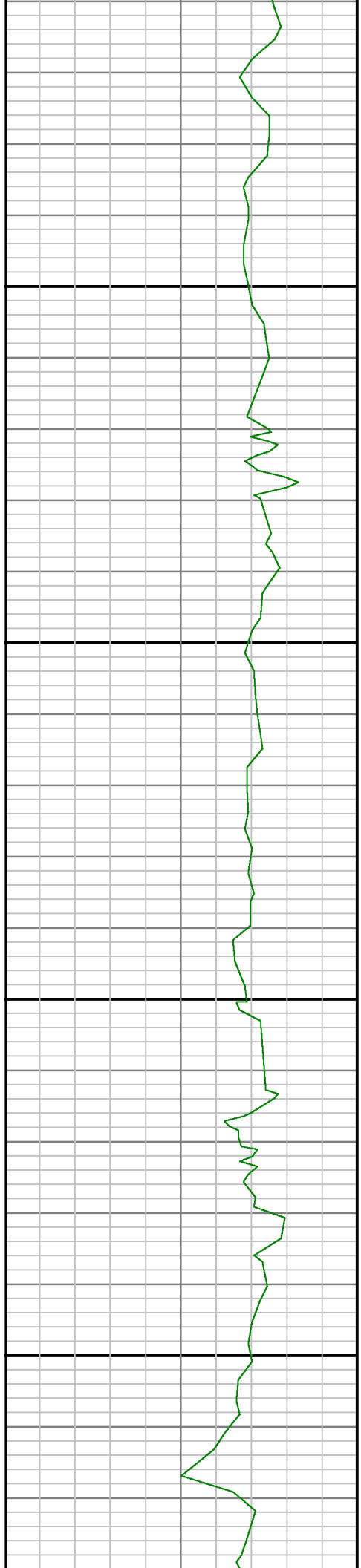


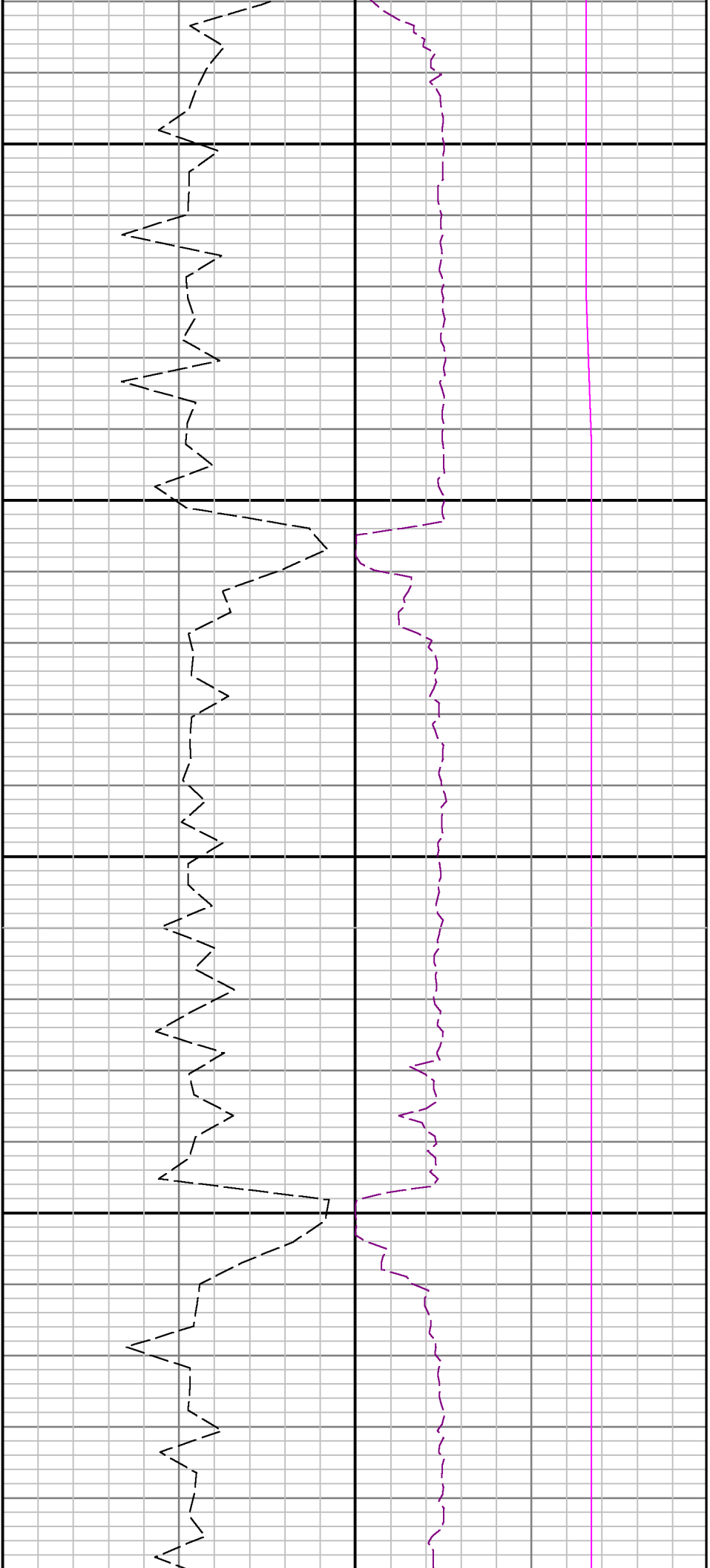




3900

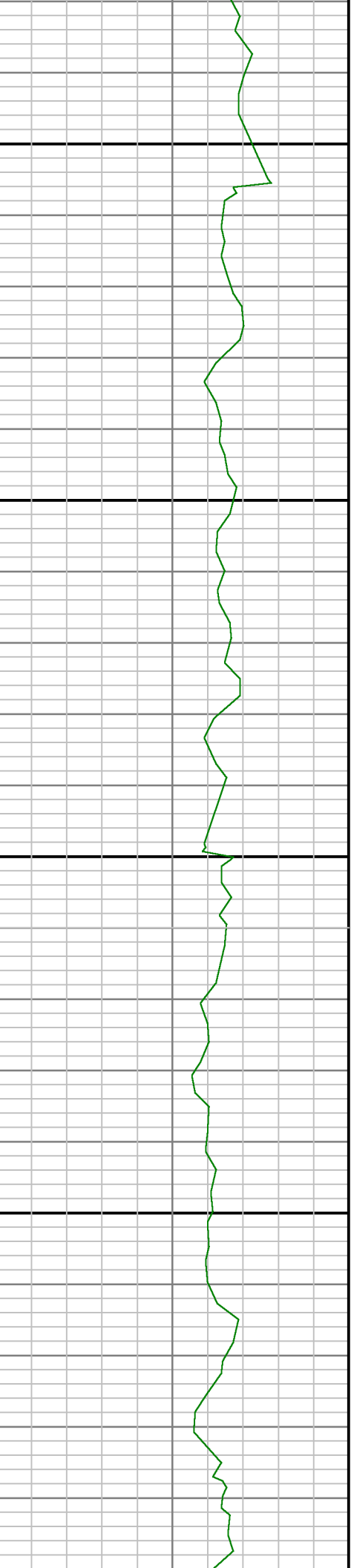
4000

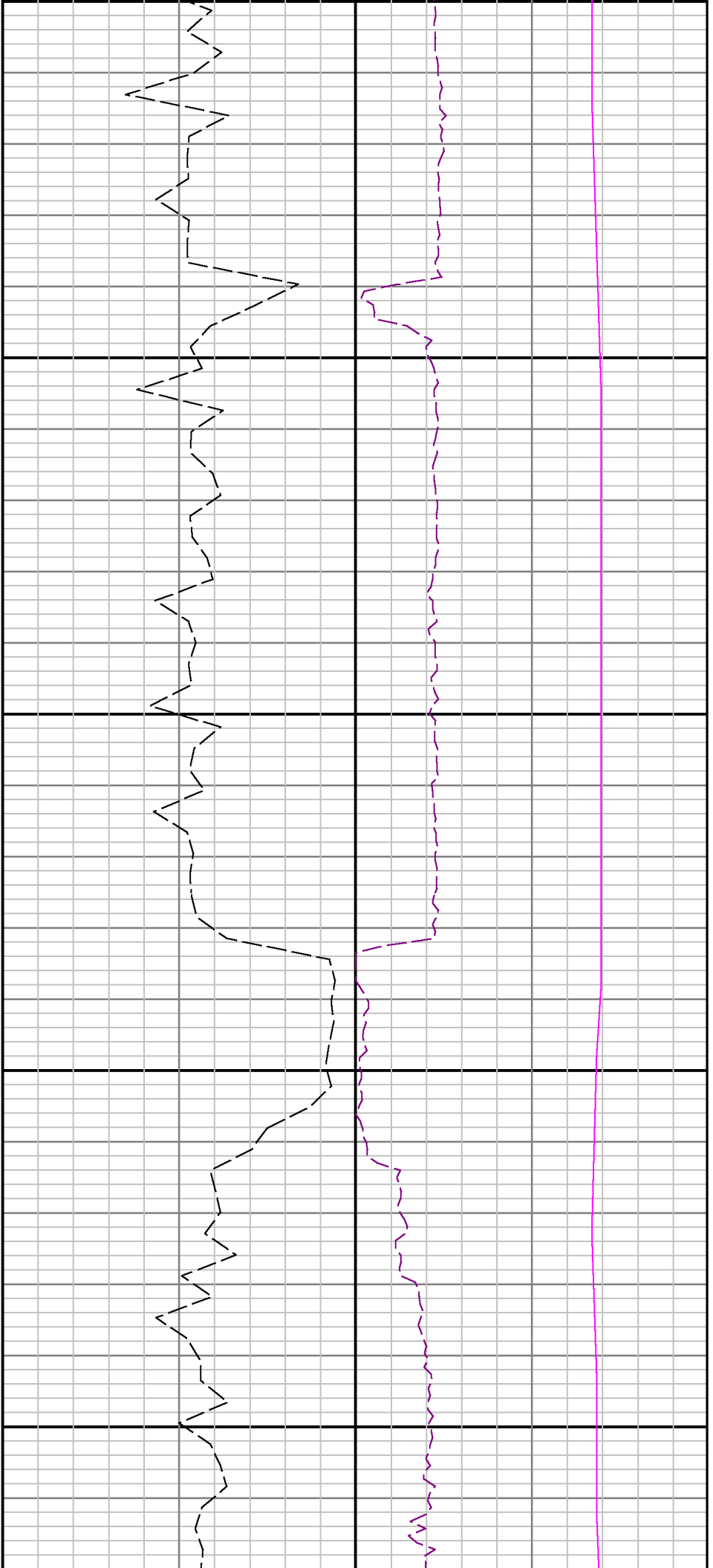




4100

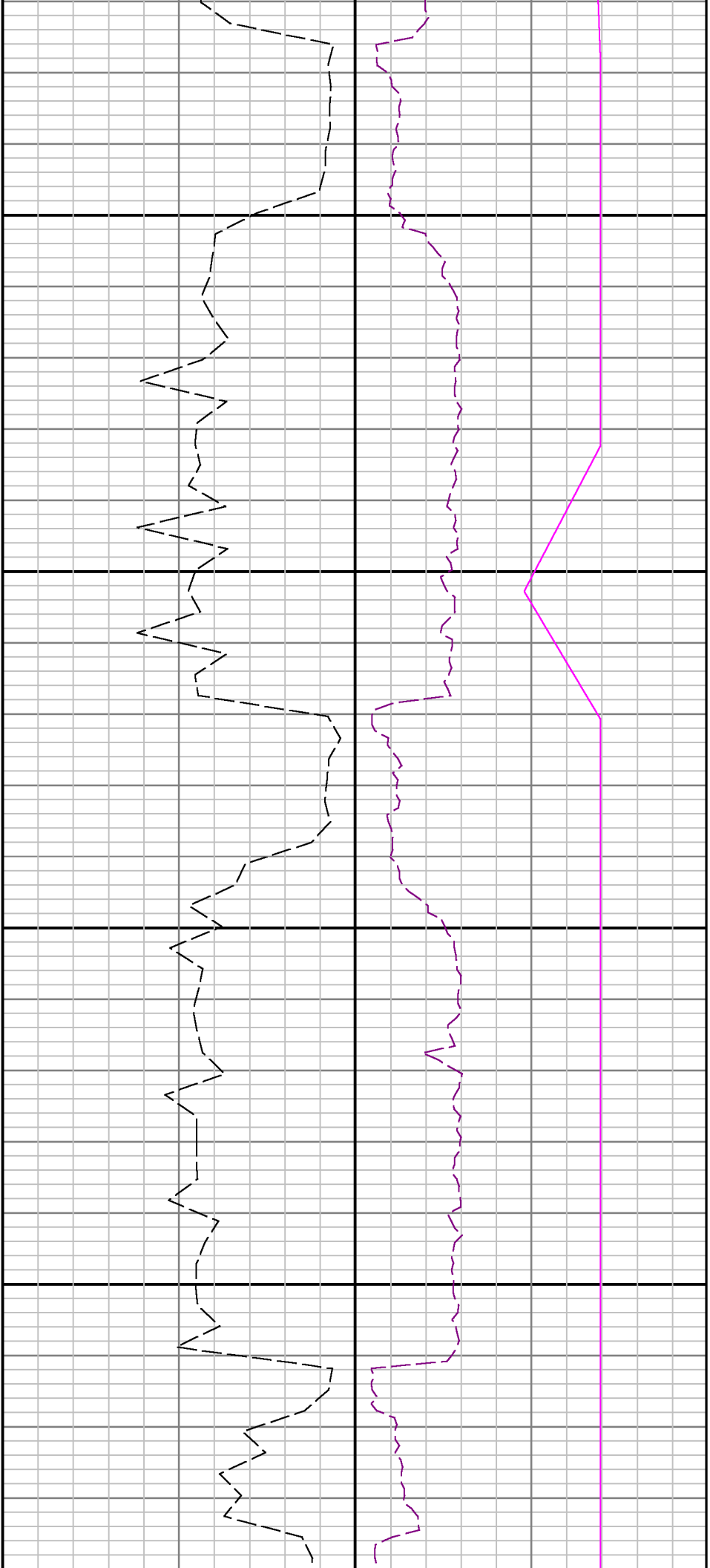
4200





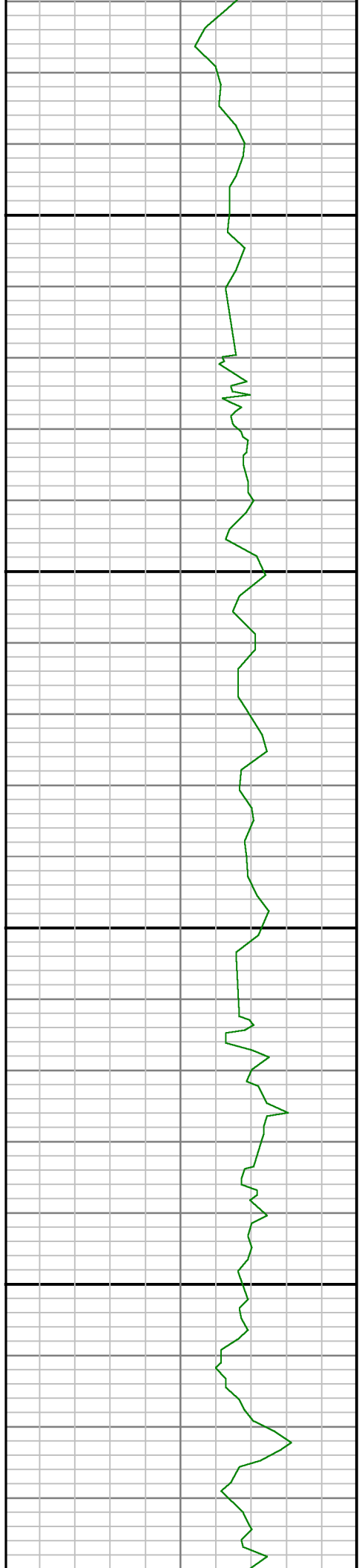
4300

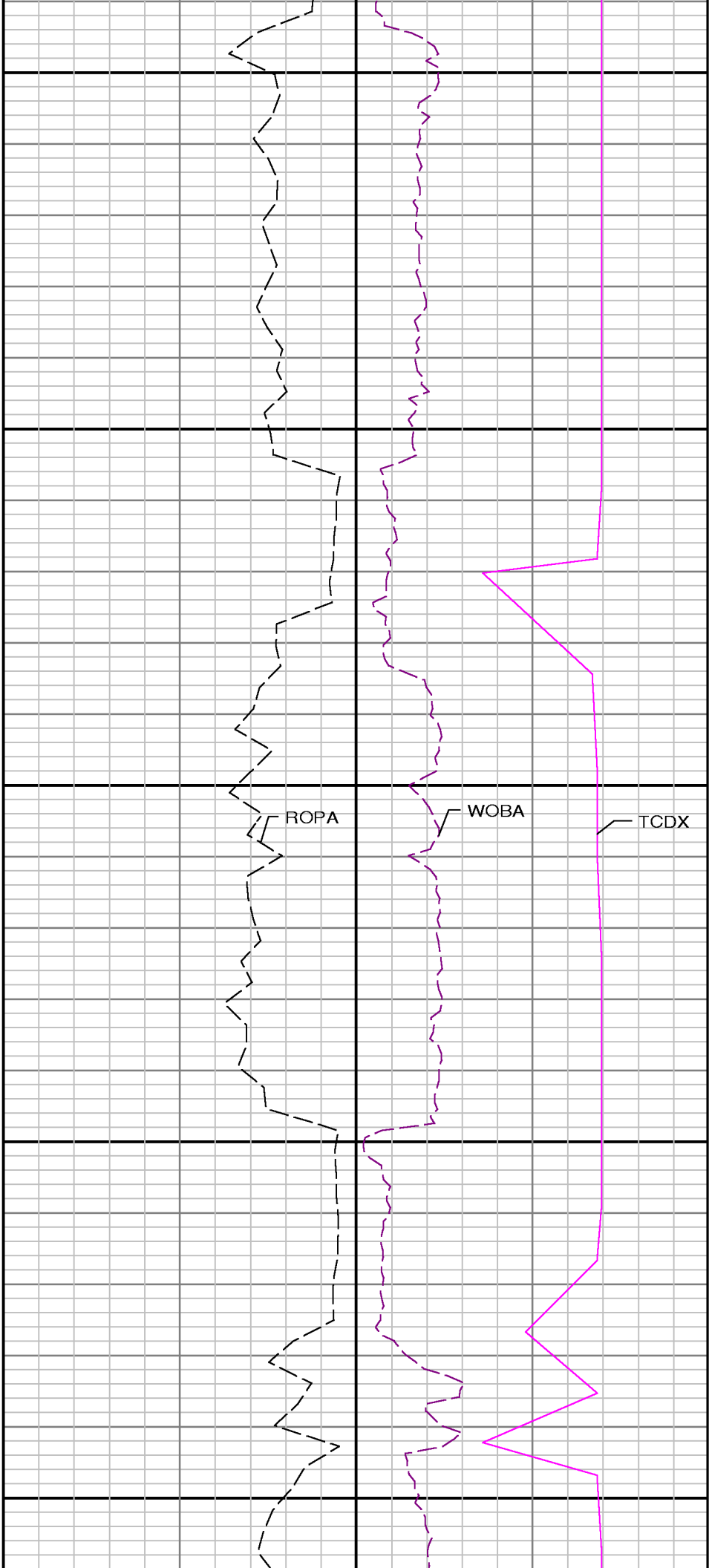
4400



4500

4600



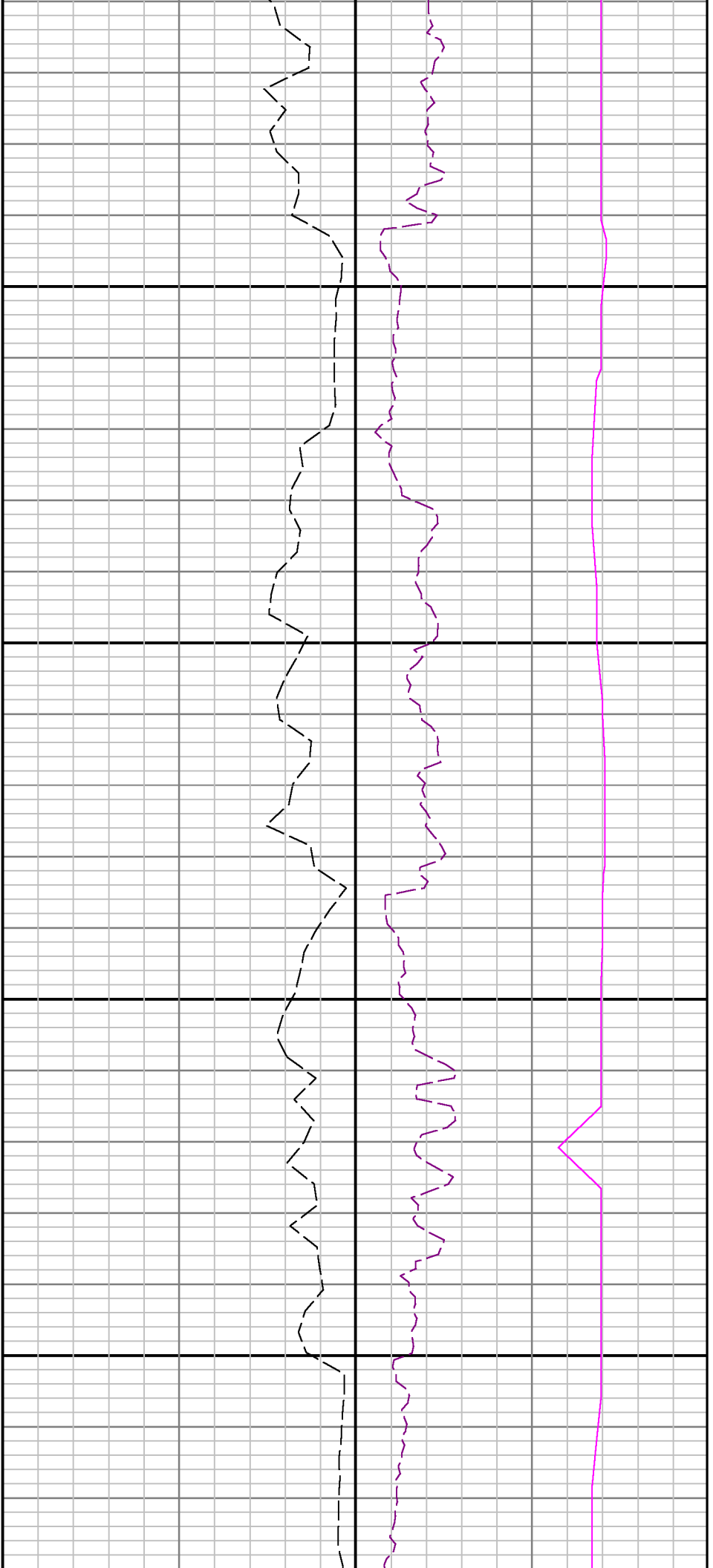


4700

4800

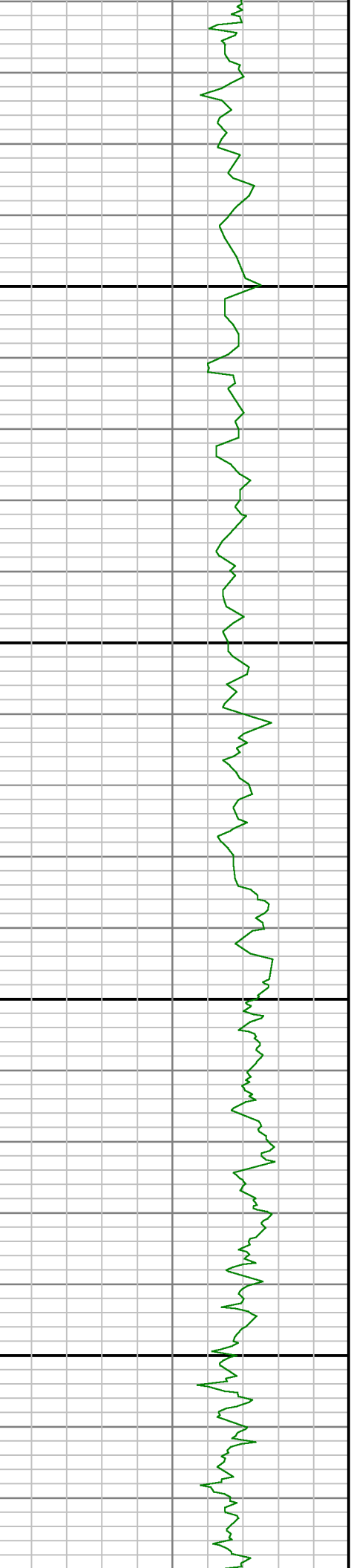
4900

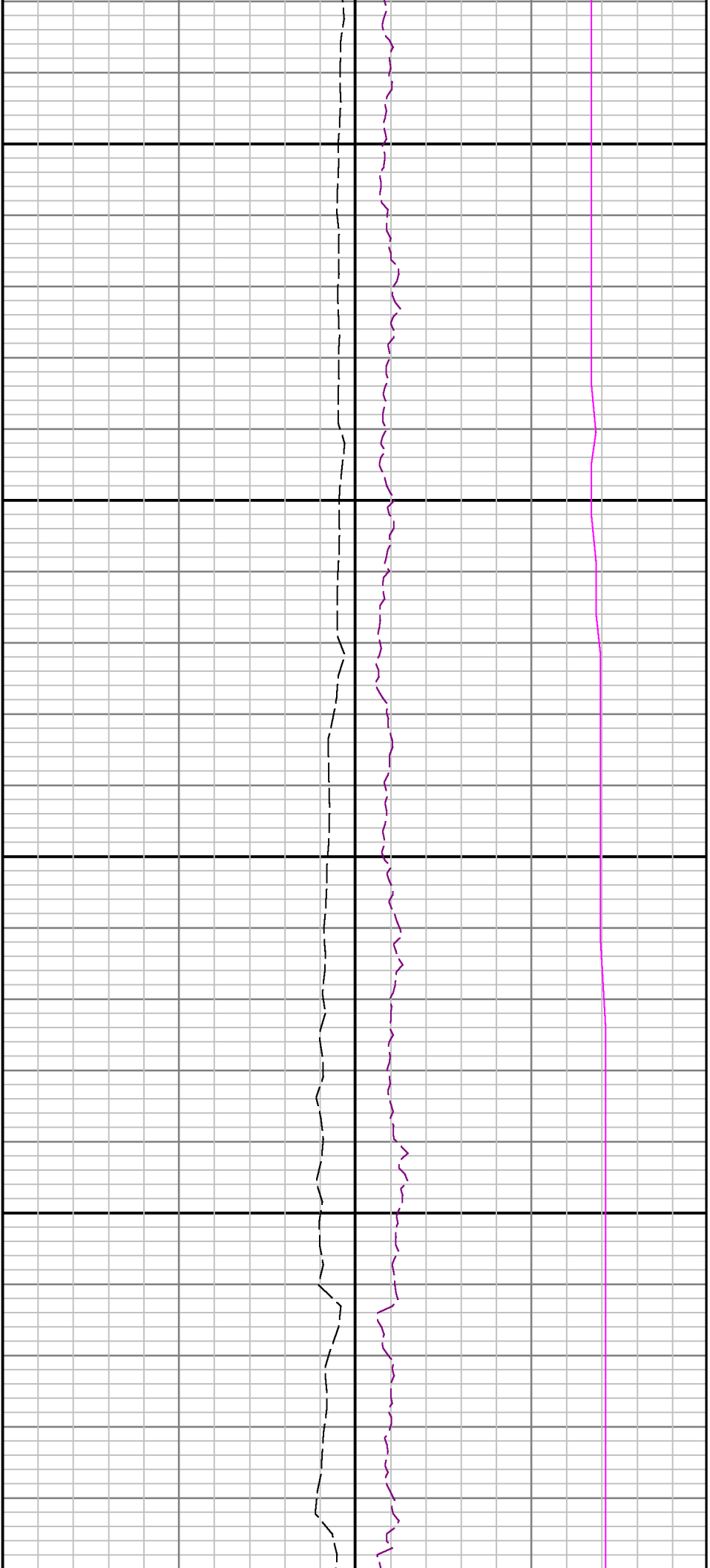
GRAX



5000

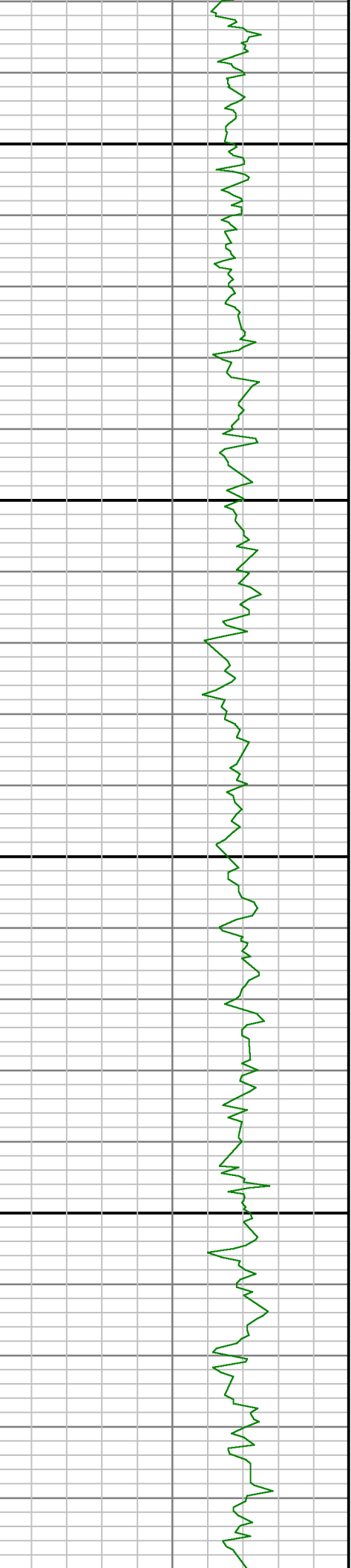
5100

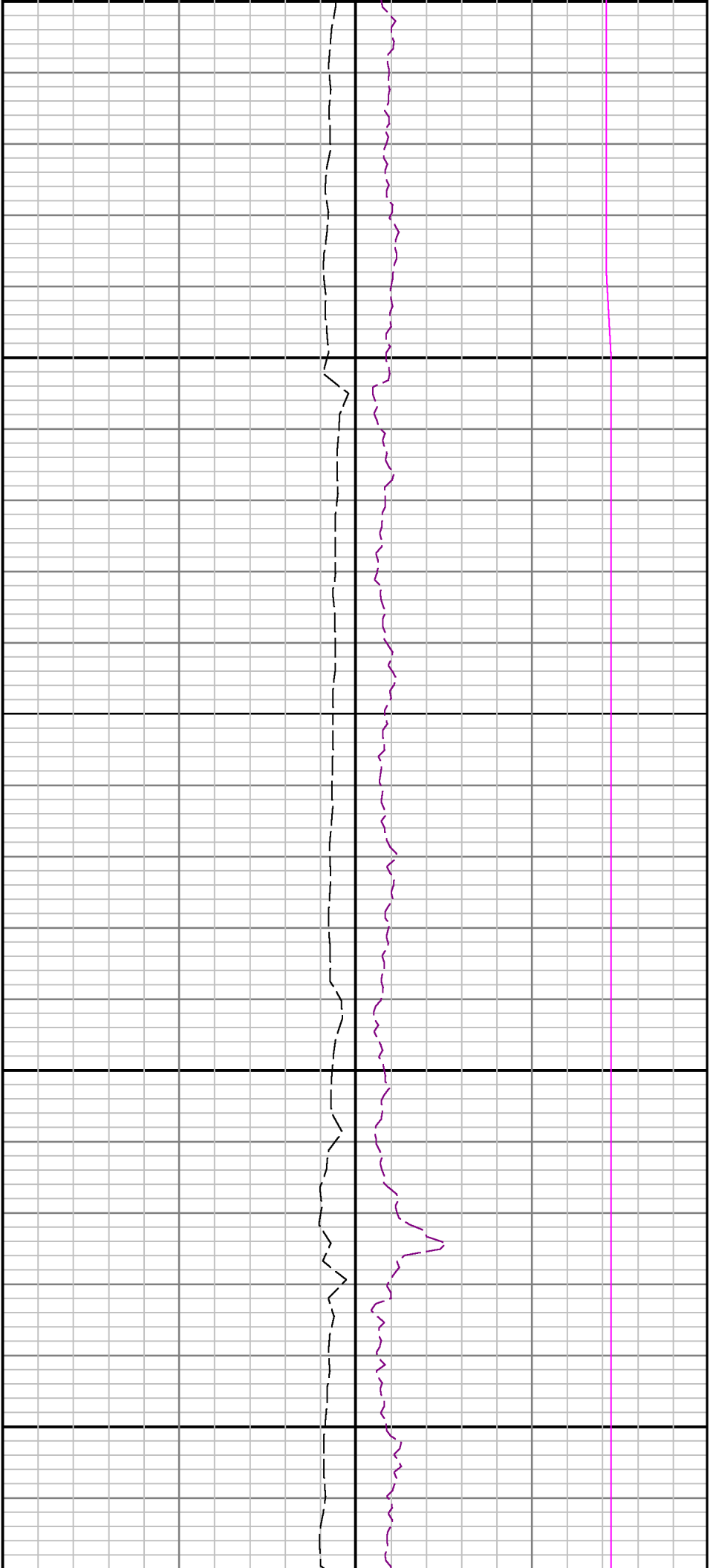




5200

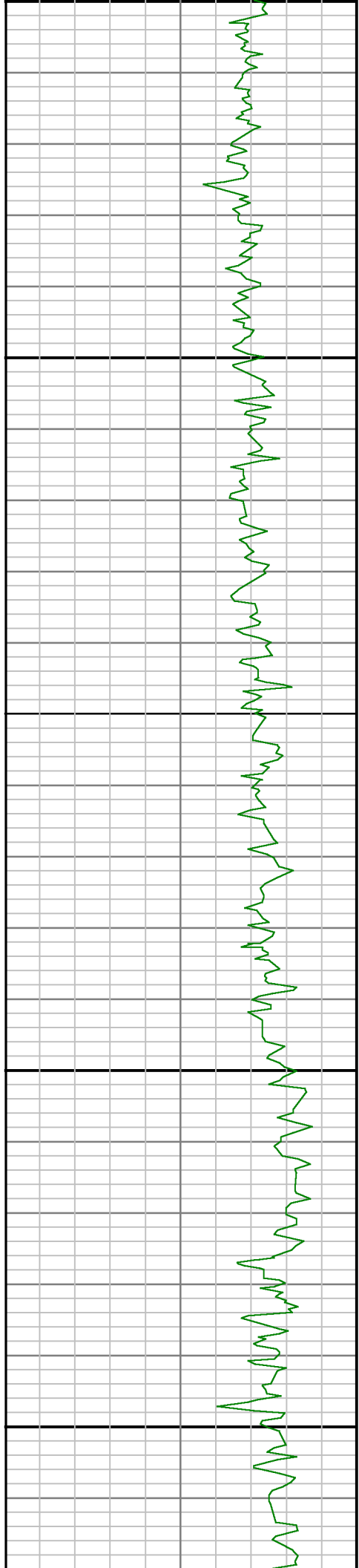
5300





5400

5500

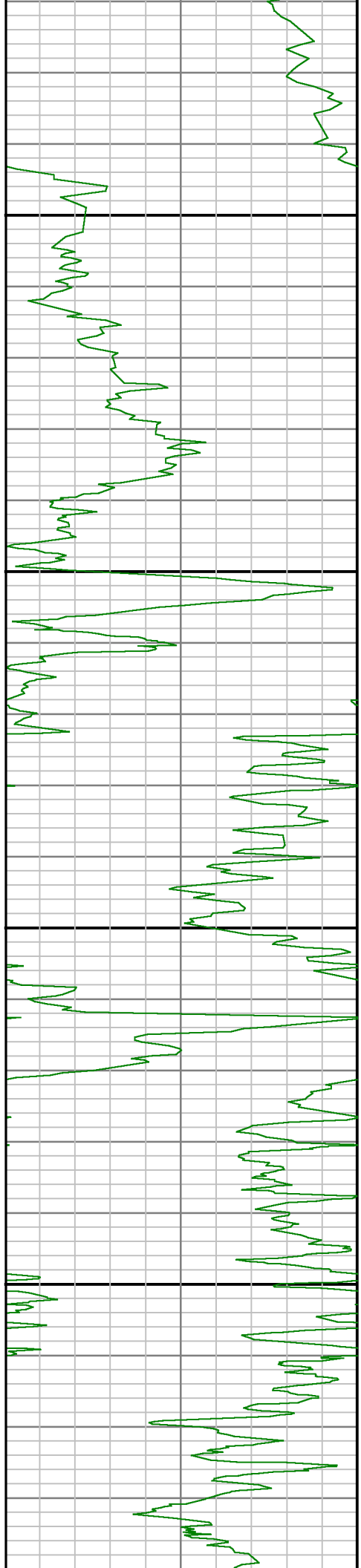


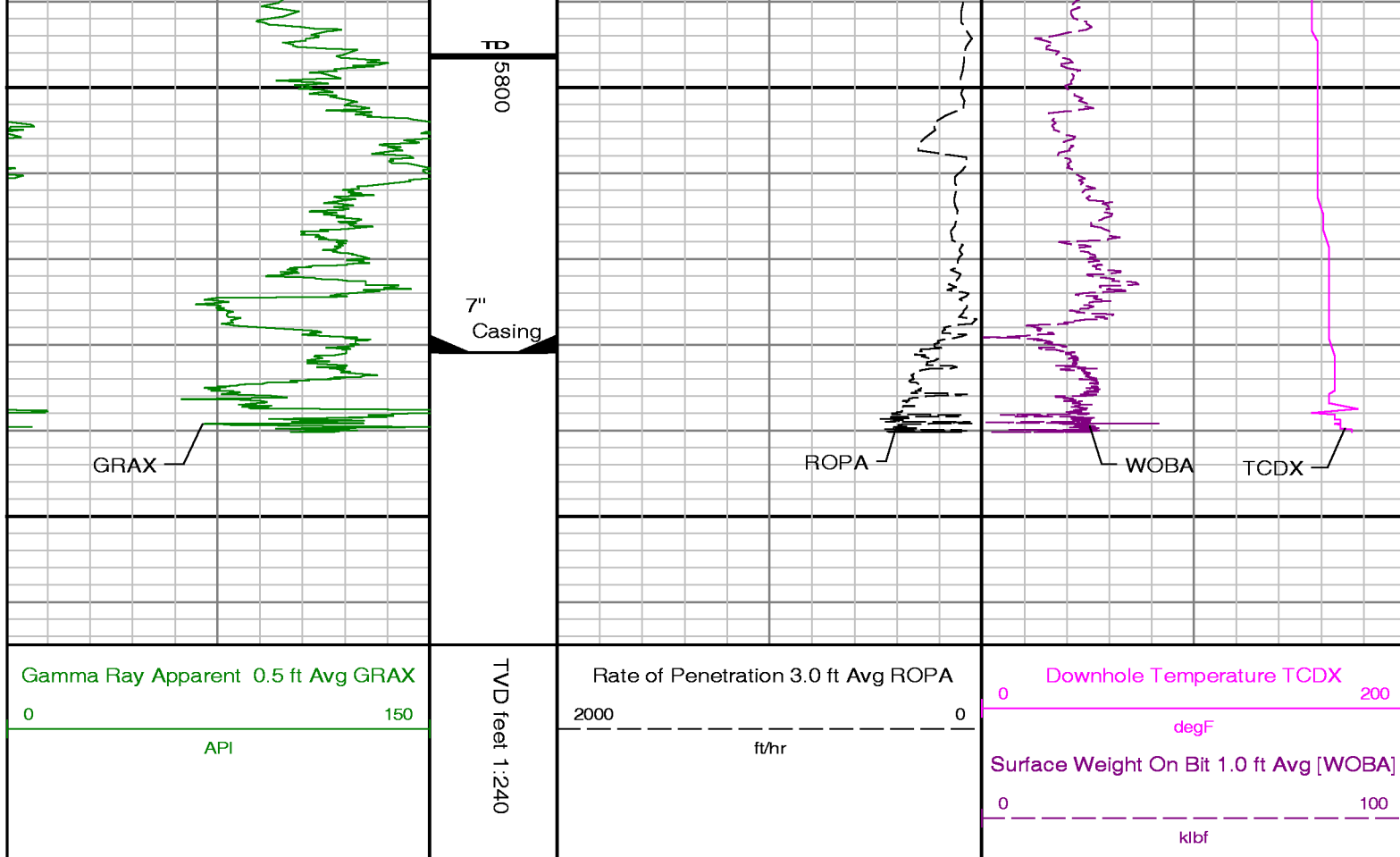




5600

5700





### ADVANTAGE Final Survey Listing

**Operator** : Noble Energy  
**Well** : KIDD LD22-780  
**Wellbore** : KIDD LD22-780 Orig Hole

**Field** : Weld County  
**Rig** : H&P 326

**API No** :  
**Job** : 7469123

### Well Origin

Latitude	40.73 deg	Longitude	-103.85 deg
North Reference	Grid	Drill Depth Zero	NULL
Vertical Datum is	Mean Sea Level	Vertical Datum to DDZ	4852.00 ft
Vertical Section North	0.00 ft	Vertical Section East	0.00 ft
Vertical Section Azimuth	350.73 deg	Vertical Section Depth	0.00ft
Grid Convergence	-1.06 deg	Magnetic Declination	8.01 deg
Total Correction	6.95 deg	TVD Calculation Method	Minimal Curvature
D-Row Calculation	Magcorr1	Local Magnetic Field	52885 nT
Local Magnetic Dip Angle	67.39 deg	Local Gravity Field	9.799 m/s^2

Tie	MD ft	Incl deg	Azim deg	North ft	East ft	TVD ft	VS ft	Incr VS ft	Crs Len ft	DLS deg/100ft	Build deg/100ft	Turn deg/100ft
	808.00	1.66	251.02	-3.81	-11.07	807.89	-1.97	11.70		0.21	0.21	-13.49
	900.00	1.74	247.84	-4.77	-13.62	899.85	-2.51	14.43	92.00	0.13	0.09	-3.46
	993.00	1.57	247.96	-5.78	-16.11	992.81	-3.11	17.12	93.00	0.18	-0.18	0.13
	1085.00	1.67	237.15	-6.98	-18.40	1084.77	-3.92	19.71	92.00	0.35	0.11	-11.75
	1178.00	1.70	229.47	-8.61	-20.59	1177.73	-5.18	22.44	93.00	0.24	0.03	-8.26
	1271.00	1.60	229.52	-10.35	-22.63	1270.69	-6.57	25.11	93.00	0.11	-0.11	0.05
	1363.00	1.64	223.46	-12.14	-24.51	1362.66	-8.03	27.71	92.00	0.19	0.04	-6.59
	1456.00	1.43	225.96	-13.91	-26.26	1455.62	-9.50	30.20	93.00	0.24	-0.23	2.69
	1548.00	1.39	224.65	-15.50	-27.87	1547.59	-10.81	32.47	92.00	0.06	-0.04	-1.42
	1641.00	2.17	239.52	-17.20	-30.18	1640.55	-12.11	35.33	93.00	0.97	0.84	15.99
	1734.00	3.03	237.96	-19.40	-33.78	1733.45	-13.70	39.55	93.00	0.93	0.92	-1.68
	1826.00	3.08	243.53	-21.79	-38.05	1825.32	-15.37	44.45	92.00	0.33	0.05	6.05
	1919.00	4.27	251.20	-24.02	-43.57	1918.13	-16.68	50.39	93.00	1.38	1.28	8.25
	2012.00	6.09	249.04	-26.90	-51.45	2010.75	-18.26	58.79	93.00	1.97	1.96	-2.32

	2106.00	7.59	245.37	-31.27	-61.75	2104.07	-20.91	69.98	94.00	1.66	1.60	-3.90
	2200.00	9.56	243.24	-37.37	-74.37	2197.02	-24.90	83.99	94.00	2.12	2.10	-2.27
	2295.00	10.78	235.93	-45.90	-88.77	2290.53	-31.00	100.73	95.00	1.87	1.28	-7.69
	2389.00	11.69	229.63	-56.99	-103.31	2382.73	-39.61	119.02	94.00	1.62	0.97	-6.70
	2483.00	11.43	228.45	-69.34	-117.54	2474.82	-49.50	137.86	94.00	0.37	-0.28	-1.26
	2578.00	11.68	227.83	-82.04	-131.71	2567.90	-59.75	156.88	95.00	0.29	0.26	-0.65
	2672.00	11.78	226.84	-94.99	-145.76	2659.94	-70.27	175.99	94.00	0.24	0.11	-1.05
	2766.00	11.56	224.93	-108.22	-159.41	2751.99	-81.13	195.00	94.00	0.47	-0.23	-2.03
	2861.00	11.42	224.46	-121.67	-172.72	2845.09	-92.26	213.93	95.00	0.18	-0.15	-0.49
	2956.00	10.59	224.96	-134.56	-185.48	2938.34	-102.93	232.06	95.00	0.88	-0.87	0.53
	3050.00	9.61	226.07	-146.12	-197.23	3030.88	-112.44	248.55	94.00	1.06	-1.04	1.18
	3144.00	10.29	228.79	-157.09	-209.20	3123.47	-121.34	264.78	94.00	0.88	0.72	2.89
	3238.00	11.50	230.73	-168.56	-222.77	3215.77	-130.47	282.55	94.00	1.34	1.29	2.06
	3333.00	11.61	228.58	-180.88	-237.27	3308.85	-140.29	301.57	95.00	0.47	0.12	-2.26
	3427.00	12.03	229.83	-193.45	-251.85	3400.86	-150.36	320.83	94.00	0.52	0.45	1.33
	3522.00	12.43	229.08	-206.54	-267.14	3493.70	-160.81	340.95	95.00	0.45	0.42	-0.79
	3616.00	12.88	229.47	-219.97	-282.74	3585.42	-171.55	361.55	94.00	0.49	0.48	0.41
	3711.00	12.89	228.26	-233.91	-298.70	3678.02	-182.73	382.73	95.00	0.28	0.01	-1.27
	3805.00	12.34	227.73	-247.64	-313.95	3769.75	-193.83	403.26	94.00	0.60	-0.59	-0.56
	3899.00	11.08	225.03	-260.78	-327.78	3861.80	-204.58	422.33	94.00	1.46	-1.34	-2.87
	3994.00	11.21	230.90	-273.06	-341.40	3955.01	-214.50	440.67	95.00	1.20	0.14	6.18
	4088.00	11.69	230.84	-284.83	-355.88	4047.14	-223.79	459.33	94.00	0.51	0.51	-0.06
	4183.00	11.14	230.58	-296.74	-370.43	4140.26	-233.19	478.13	95.00	0.58	-0.58	-0.27
	4277.00	10.53	230.94	-307.92	-384.12	4232.58	-242.02	495.80	94.00	0.65	-0.65	0.38
	4371.00	9.16	233.35	-317.80	-396.79	4325.20	-249.73	511.87	94.00	1.52	-1.46	2.56
	4466.00	9.35	236.22	-326.60	-409.27	4418.96	-256.41	527.14	95.00	0.53	0.20	3.02
	4560.00	10.92	236.18	-335.80	-423.01	4511.49	-263.28	543.68	94.00	1.67	1.67	-0.04
	4654.00	10.79	227.88	-346.66	-436.94	4603.81	-271.75	561.34	94.00	1.67	-0.14	-8.83
	4749.00	9.03	227.52	-357.66	-449.03	4697.39	-280.66	577.69	95.00	1.85	-1.85	-0.38
	4843.00	9.12	231.61	-367.27	-460.31	4790.22	-288.32	592.51	94.00	0.69	0.10	4.35
	4938.00	9.79	229.06	-377.24	-472.32	4883.93	-296.23	608.11	95.00	0.83	0.71	-2.68
	5032.00	10.62	228.89	-388.17	-484.88	4976.44	-304.99	624.76	94.00	0.88	0.88	-0.18
	5127.00	9.03	226.59	-399.05	-496.89	5070.04	-313.79	640.97	95.00	1.72	-1.67	-2.42
	5190.00	6.70	248.70	-403.78	-503.91	5132.46	-317.34	649.44	63.00	6.00	-3.70	35.10
	5221.00	6.12	270.34	-404.43	-507.25	5163.27	-317.44	652.84	31.00	7.96	-1.87	69.81
	5316.00	10.26	307.49	-399.25	-519.04	5257.34	-310.42	665.72	95.00	6.86	4.36	39.11
Tie	MD	Incl	Azim	North	East	TVD	VS	Incr VS	Crs Len	DLS	Build	Turn
	ft	deg	deg	ft	ft	ft	ft	ft	ft	deg/100ft	deg/100ft	deg/100ft
	5411.00	15.77	328.99	-383.01	-532.42	5349.92	-292.24	686.76	95.00	7.63	5.80	22.63
	5505.00	22.82	335.41	-355.45	-546.60	5438.59	-262.76	717.75	94.00	7.82	7.50	6.83
	5551.00	26.55	338.30	-337.78	-554.12	5480.38	-244.11	736.95	46.00	8.52	8.11	6.28
	5599.00	30.47	340.31	-316.34	-562.19	5522.55	-221.65	759.86	48.00	8.41	8.17	4.19
	5693.00	38.02	344.25	-265.96	-578.10	5600.21	-169.37	812.69	94.00	8.37	8.03	4.19
	5788.00	47.78	348.19	-203.21	-593.28	5669.73	-104.99	877.26	95.00	10.65	10.27	4.15
	5882.00	56.42	352.70	-130.14	-605.41	5727.44	-30.92	951.33	94.00	9.94	9.19	4.80
	5977.00	66.14	356.54	-47.30	-613.08	5773.05	52.07	1034.52	95.00	10.83	10.23	4.04
	6024.00	70.49	358.15	-3.69	-615.09	5790.41	95.44	1078.18	47.00	9.79	9.26	3.43
	6071.00	73.94	358.66	41.04	-616.34	5804.76	139.79	1122.93	47.00	7.41	7.34	1.09
	6118.00	78.72	0.04	86.69	-616.85	5815.87	184.93	1168.58	47.00	10.56	10.17	2.94
	6169.00	83.28	1.12	137.05	-616.34	5823.84	234.54	1218.94	51.00	9.18	8.94	2.12
	6241.00	87.19	1.24	208.77	-614.86	5829.82	305.09	1290.67	72.00	5.43	5.43	0.17
	6333.00	88.02	1.01	300.67	-613.05	5833.67	395.50	1382.59	92.00	0.94	0.90	-0.25
	6426.00	88.21	0.35	393.61	-611.95	5836.73	487.05	1475.54	93.00	0.74	0.20	-0.71
	6519.00	89.59	0.84	486.59	-610.99	5838.51	578.66	1568.52	93.00	1.57	1.48	0.53
	6613.00	89.35	0.64	580.58	-609.77	5839.38	671.22	1662.52	94.00	0.33	-0.26	-0.21
	6707.00	89.72	359.96	674.57	-609.28	5840.15	763.91	1756.52	94.00	0.82	0.39	-0.72
	6802.00	90.43	358.11	769.55	-610.88	5840.02	857.91	1851.51	95.00	2.09	0.75	-1.95
	6896.00	91.87	357.23	863.45	-614.70	5838.13	951.20	1945.49	94.00	1.80	1.53	-0.94
	6991.00	91.87	357.14	958.29	-619.36	5835.03	1045.55	2040.44	95.00	0.09	0.00	-0.09
	7085.00	92.37	357.71	1052.13	-623.58	5831.56	1138.84	2134.37	94.00	0.81	0.53	0.61
	7179.00	91.13	357.10	1145.99	-627.84	5828.69	1232.16	2228.33	94.00	1.47	-1.32	-0.65
	7274.00	90.43	356.12	1240.81	-633.45	5827.39	1326.65	2323.32	95.00	1.27	-0.74	-1.03
	7368.00	91.04	356.17	1334.59	-639.77	5826.19	1420.22	2417.31	94.00	0.65	0.65	0.05
	7463.00	91.07	356.94	1429.40	-645.48	5824.44	1514.71	2512.29	95.00	0.81	0.03	0.81
	7557.00	90.70	356.48	1523.23	-650.88	5822.99	1608.19	2606.28	94.00	0.63	-0.39	-0.49
	7652.00	90.21	357.13	1618.08	-656.17	5822.23	1702.65	2701.28	95.00	0.86	-0.52	0.68
	7747.00	90.92	357.71	1712.98	-660.45	5821.30	1797.00	2796.27	95.00	0.97	0.75	0.61
	7841.00	90.30	356.40	1806.85	-665.28	5820.29	1890.42	2890.26	94.00	1.54	-0.66	-1.39
	7936.00	91.72	358.24	1901.72	-669.72	5818.62	1984.77	2985.24	95.00	2.45	1.49	1.94
	8031.00	91.23	358.23	1996.65	-672.64	5816.17	2078.92	3080.21	95.00	0.52	-0.52	-0.01

	8125.00	90.24	358.66	2090.60	-675.19	5814.97	2172.06	3174.20	94.00	1.15	-1.05	0.46
	8219.00	89.60	358.06	2184.56	-677.88	5815.10	2265.23	3268.20	94.00	0.93	-0.68	-0.64
	8314.00	89.13	358.56	2279.52	-680.68	5816.15	2359.39	3363.19	95.00	0.72	-0.49	0.53
	8409.00	89.53	357.69	2374.46	-683.79	5817.26	2453.60	3458.18	95.00	1.01	0.42	-0.92
	8503.00	90.06	357.63	2468.38	-687.63	5817.60	2546.91	3552.18	94.00	0.57	0.56	-0.06
	8597.00	90.27	358.51	2562.32	-690.80	5817.33	2640.14	3646.18	94.00	0.96	0.22	0.94
	8691.00	91.26	359.24	2656.29	-692.64	5816.07	2733.18	3740.17	94.00	1.31	1.05	0.78
	8786.00	90.83	358.23	2751.25	-694.74	5814.34	2827.24	3835.15	95.00	1.16	-0.45	-1.06
	8880.00	90.00	357.20	2845.18	-698.49	5813.66	2920.53	3929.15	94.00	1.41	-0.88	-1.10
	8975.00	89.69	356.95	2940.05	-703.33	5813.92	3014.95	4024.15	95.00	0.42	-0.33	-0.26
	9070.00	89.50	357.91	3034.95	-707.59	5814.59	3109.30	4119.15	95.00	1.03	-0.20	1.01
	9164.00	90.03	358.40	3128.90	-710.62	5814.97	3202.51	4213.14	94.00	0.77	0.56	0.52
	9258.00	90.95	358.13	3222.85	-713.47	5814.17	3295.69	4307.14	94.00	1.02	0.98	-0.29
	9353.00	90.95	358.52	3317.80	-716.24	5812.60	3389.85	4402.13	95.00	0.41	0.00	0.41
	9447.00	91.11	359.43	3411.77	-717.92	5810.91	3482.86	4496.11	94.00	0.98	0.17	0.97
	9541.00	90.00	0.44	3505.76	-718.03	5810.00	3575.64	4590.10	94.00	1.60	-1.18	1.07
	9636.00	90.33	0.93	3600.75	-716.89	5809.72	3669.21	4685.10	95.00	0.62	0.35	0.52
	9730.00	91.13	0.25	3694.74	-715.93	5808.52	3761.81	4779.09	94.00	1.12	0.85	-0.72
Tie	MD ft	Incl deg	Azim deg	North ft	East ft	TVD ft	VS ft	Incr VS ft	Crs Len ft	DLS deg/100ft	Build deg/100ft	Turn deg/100ft
	9825.00	91.20	359.78	3789.72	-715.90	5806.59	3855.55	4874.07	95.00	0.50	0.07	-0.49
	9919.00	91.14	0.98	3883.70	-715.28	5804.67	3948.20	4968.05	94.00	1.28	-0.06	1.28
	10014.00	91.26	0.25	3978.67	-714.26	5802.68	4041.77	5063.03	95.00	0.78	0.13	-0.77
	10108.00	91.35	0.06	4072.65	-714.00	5800.54	4134.47	5157.01	94.00	0.22	0.10	-0.20
	10202.00	91.50	358.98	4166.61	-714.79	5798.21	4227.34	5250.98	94.00	1.16	0.16	-1.15
	10296.00	89.93	358.38	4260.58	-716.96	5797.03	4320.43	5344.97	94.00	1.79	-1.67	-0.64
	10391.00	90.12	0.33	4355.57	-718.03	5796.99	4414.35	5439.96	95.00	2.06	0.20	2.05
	10438.00	89.84	1.67	4402.56	-717.21	5797.01	4460.59	5486.96	47.00	2.91	-0.60	2.85
	Projection to TD: 10500.00	89.84	1.67	4464.53	-715.40	5797.18	4521.47	5548.96	62.00	0.00	0.00	0.00