

**RADIAL CEMENT BOND  
GAMMA RAY  
CCL**

Company ANADARKO PETROLEUM CORPORATION		Company ANADARKO PETROLEUM CORPORATION	
Well BERRY 24-8		Well BERRY 24-8	
Field WATTENBERG		Field WATTENBERG	
County WELD		County WELD	
State CO		State CO	
Location: SHL: 2450' FNL & 1420' FEL SW/NE LAT: 40.24090 & LONG: -104.90990		API #: 05-123-22401	
SEC 8 TWP 3N RGE 67W		Other Services	
Permanent Datum	GL	Elevation	4810'
Log Measured From	KB 12'		
Drilling Measured From	KB		
Elevation	KB. 4822'		
	D.F. 4821'		
	G.L. 4810'		
Date 12-5-2015			
Run Number ONE			
Depth Driller 7295'			
Depth Logger 3019'			
Bottom Logged Interval 3010'			
Top Log Interval SURFACE			
Open Hole Size 7.625			
Type Fluid WATER			
Density / Viscosity 1.0			
Max. Recorded Temp. 104 DEG F			
Estimated Cement Top 322'			
Time Well Ready N/A			
Time Logger on Bottom N/A			
Equipment Number 4310			
Location GREELEY			
Recorded By N. BREHMER			
Witnessed By B. SMITH			
Borehole Record		Tubing Record	
Run Number	Bit	From	To
		Size	Weight
			From
			To
Casing Record	Size	Wgt/Ft	Top
Surface String	8.63	24#	SURFACE
Prot. String			
Production String	4.5"	11.6#	SURFACE
Liner			7287'

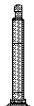
<<< Fold Here >>>

All interpretations are opinions based on inferences from electrical or other measurements and we cannot and do not guarantee the accuracy or correctness of any interpretation, and we shall not, except in the case of gross or willful negligence on our part, be liable or responsible for any loss, costs, damages, or expenses incurred or sustained by anyone resulting from any interpretation made by any of our officers, agents or employees. These interpretations are also subject to our general terms and conditions set out in our current Price Schedule.



Comments

RAN CBL TO VERIFY CEMENT BOND  
HOLE WAS LOADED THE NIGHT BEFORE  
CORRELATED TO BRAN-DEX 10-6-04 8' UP HOLE  
CALIBRATED FREE PIPE @1230' 81mA IN 4.5"

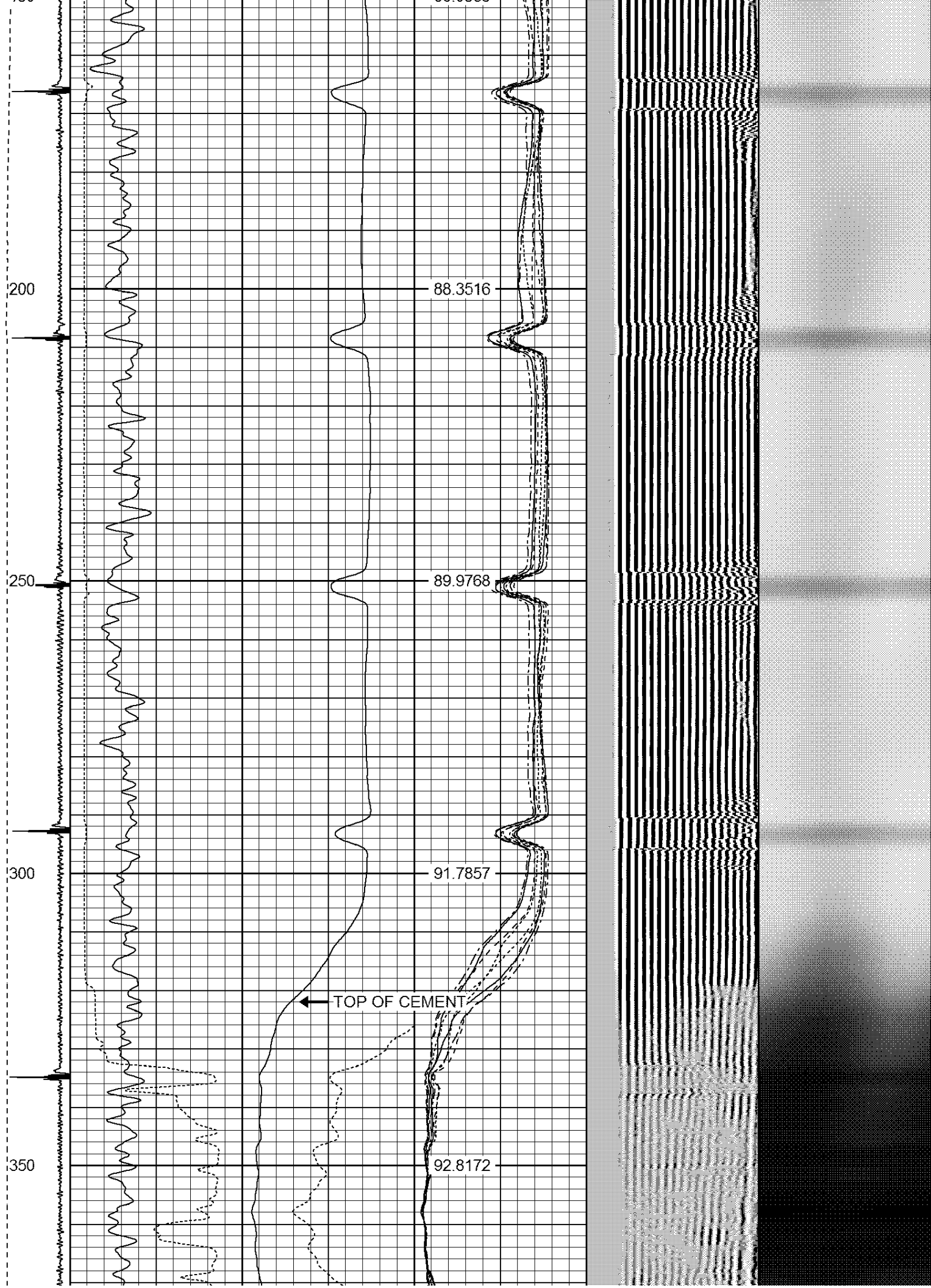
THANK YOU FOR USING WARRIOR !!!!!!!

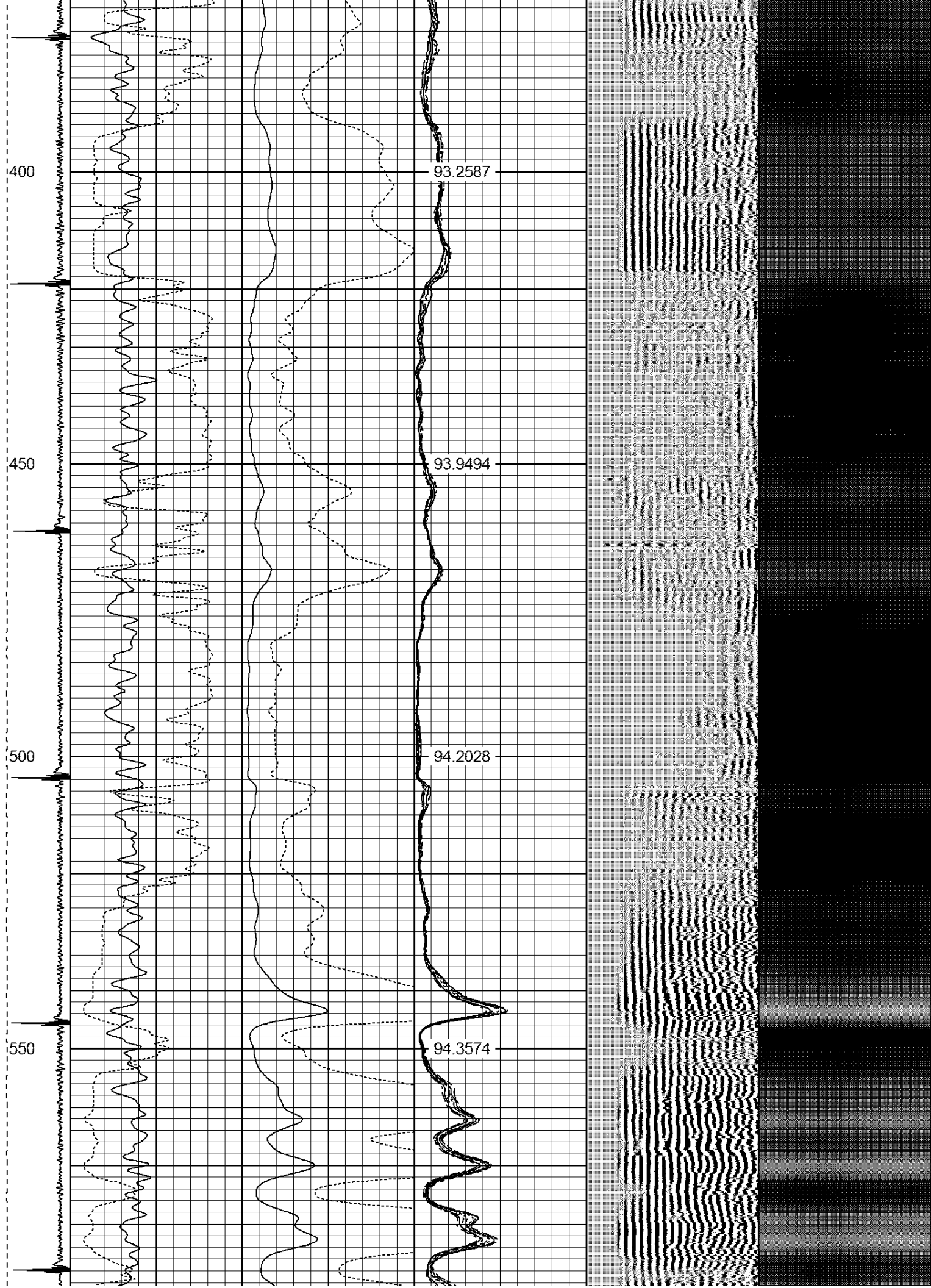
Sensor	Offset (ft)	Schematic	Description	Len (ft)	OD (in)	Wt (lb)
			1_4	1.00	1.36	5.00

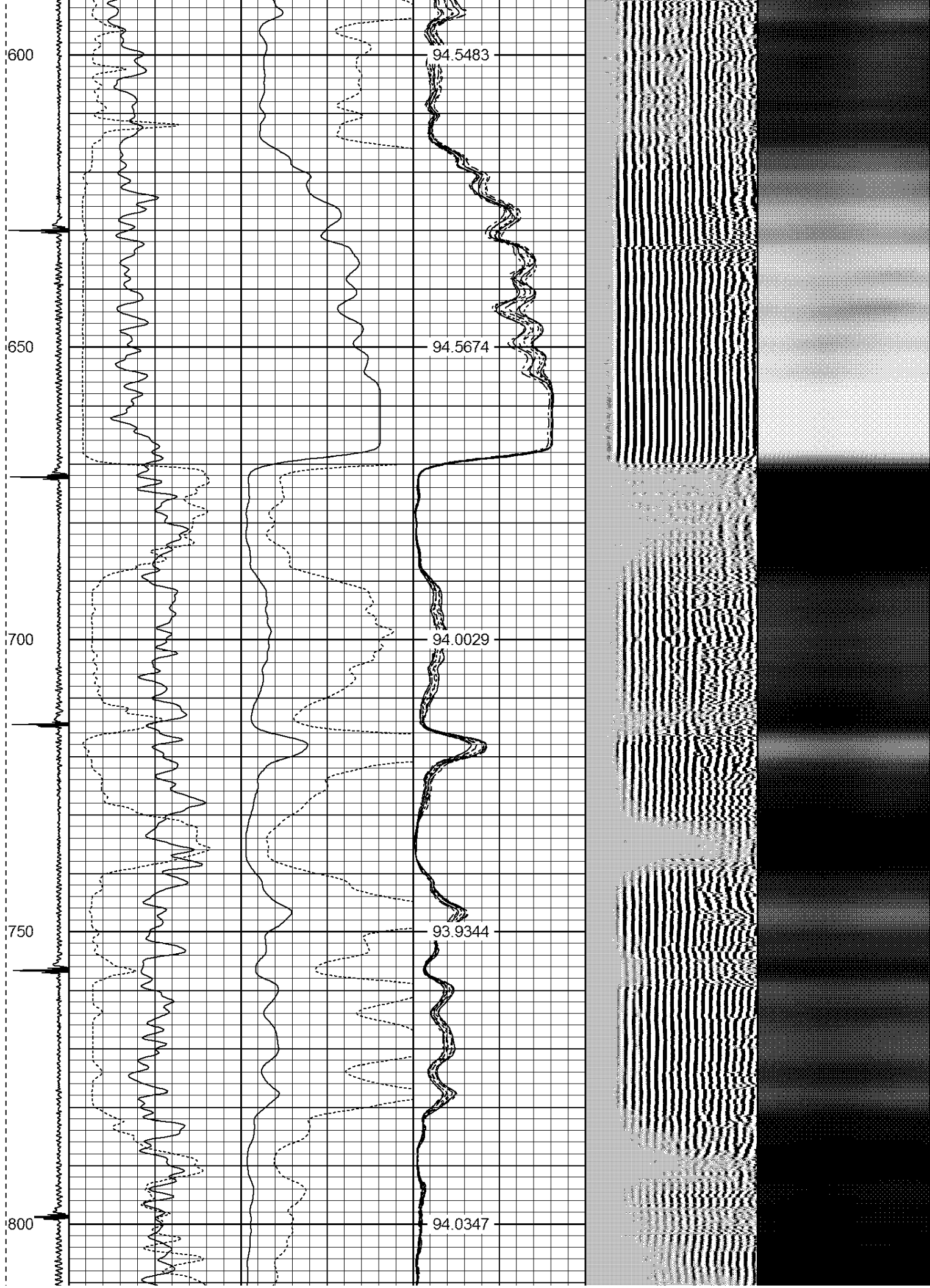
			PTS275	2.83	2.75	
HEADVOLT	16.13					
IntTemp	14.71					
WVF3FT	11.46		RBT-Probe (Base)	8.92	2.75	90.00
WVFCAL	11.46		Probe Radii Bond Tool with Digital Telemetry			
WVFS1	11.46					
WVFS2	11.46					
WVFS3	11.46					
WVFS4	11.46					
WVFS5	11.46					
WVFS6	11.46					
WVFS7	11.46					
WVFS8	11.46					
WVF5FT	10.46					
CNLSC	6.00		CNT-Probe_B (275)	2.88	2.75	40.00
CNSSC	5.17		6 bow centralizer			
CCL	3.64					
			GR-Probe (275)	4.33	2.75	30.00
			Probe 2.75"			
GR	0.90					
Dataset: berry 24-8.db: field/well/run1/pass2 Total Length: 19.96 ft Total Weight: 165.00 lb O.D. 2.75 in						

-9	CCL	1	200	TT (usec)	1000	0	AMP (mV)	100	0	AMPS1	100	200	VDL	1200	1	Cement Map	8	
LSPD (ft/min)	0		0	GR (GAPI)	200	0	AMPx5 (mV)	20	0	AMPS2	100			100				1
	200		200	GR (GAPI)	400				0	AMPS3	100							
0	250								0	AMPS4	100							
									0	AMPS5	100							
									0	AMPS6	100							
									0	AMPS7	100							
									0	AMPS8	100							
									IntTemp									
									(degF)									

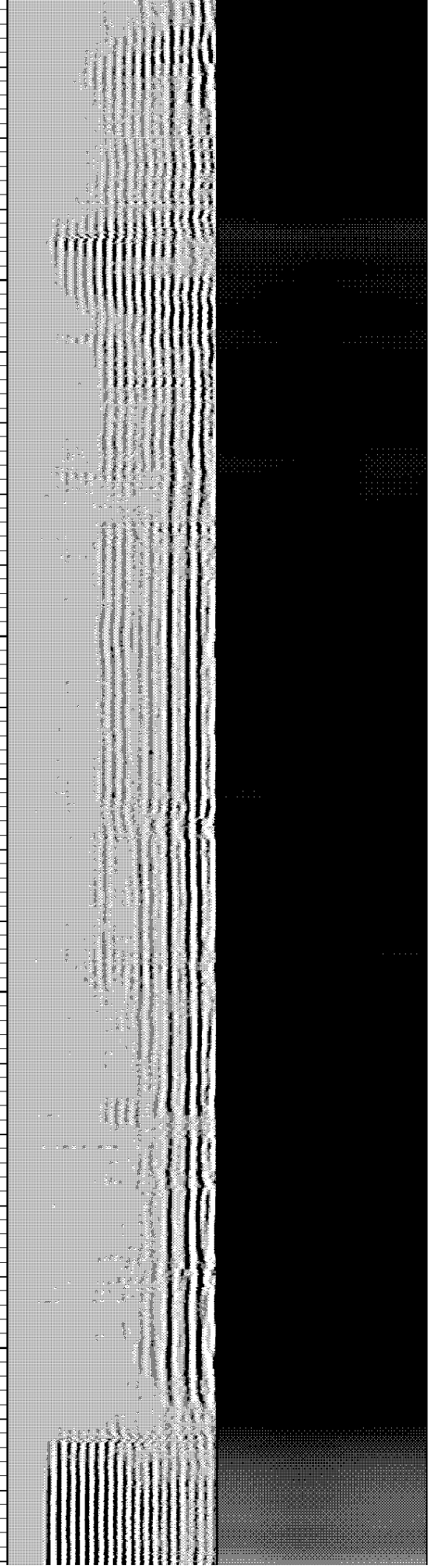
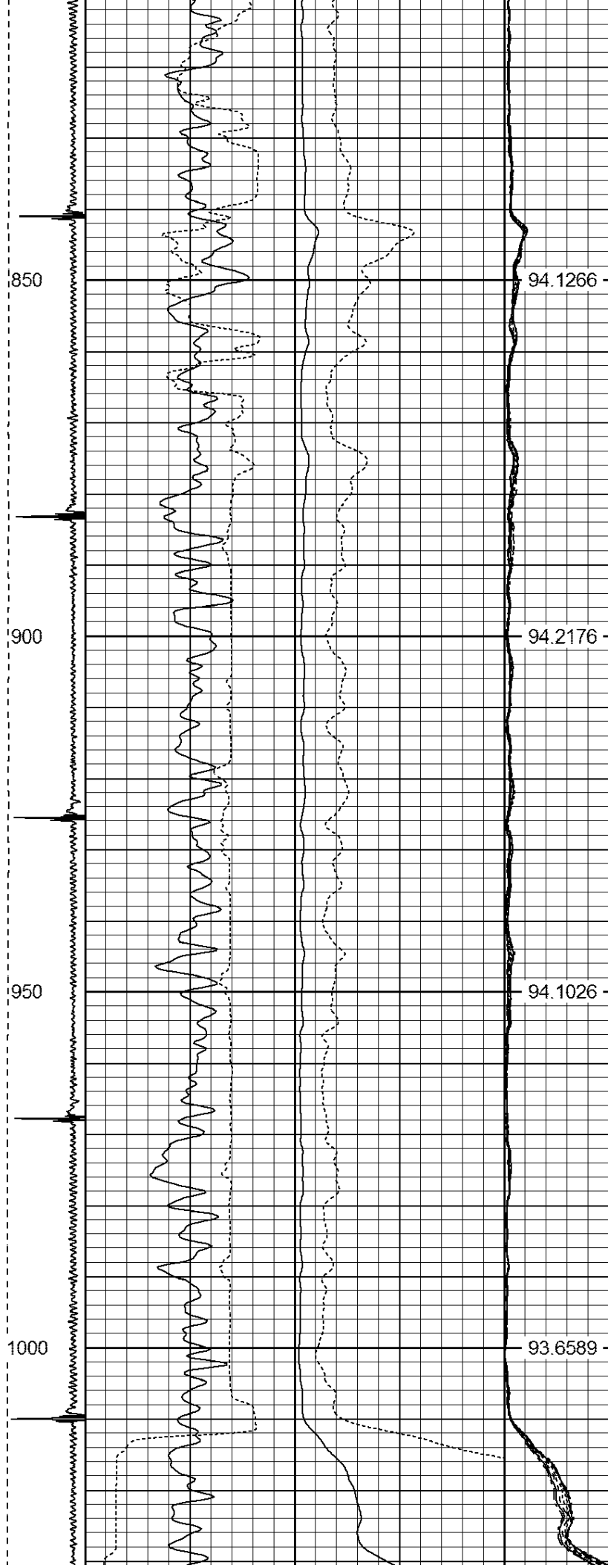


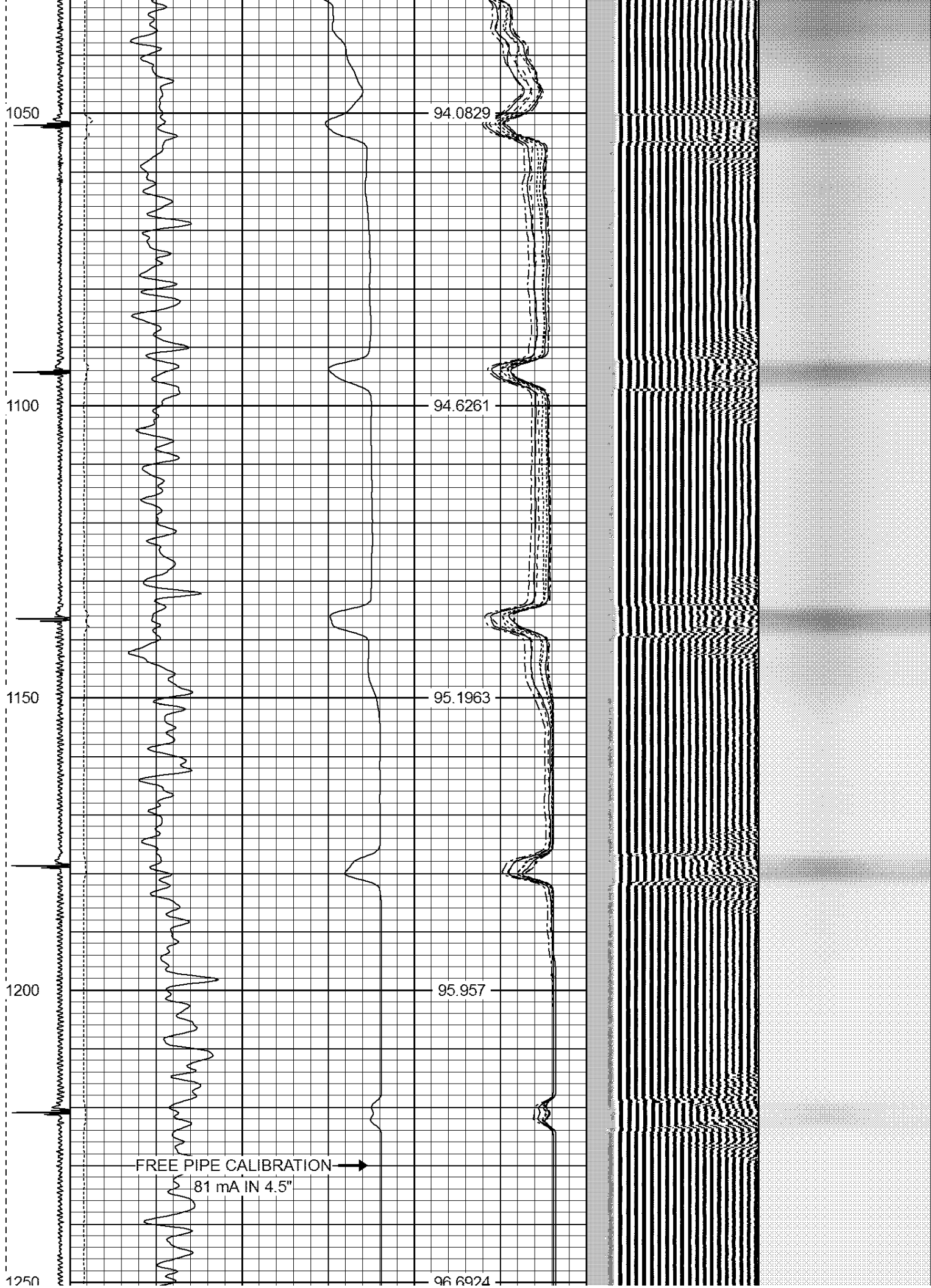




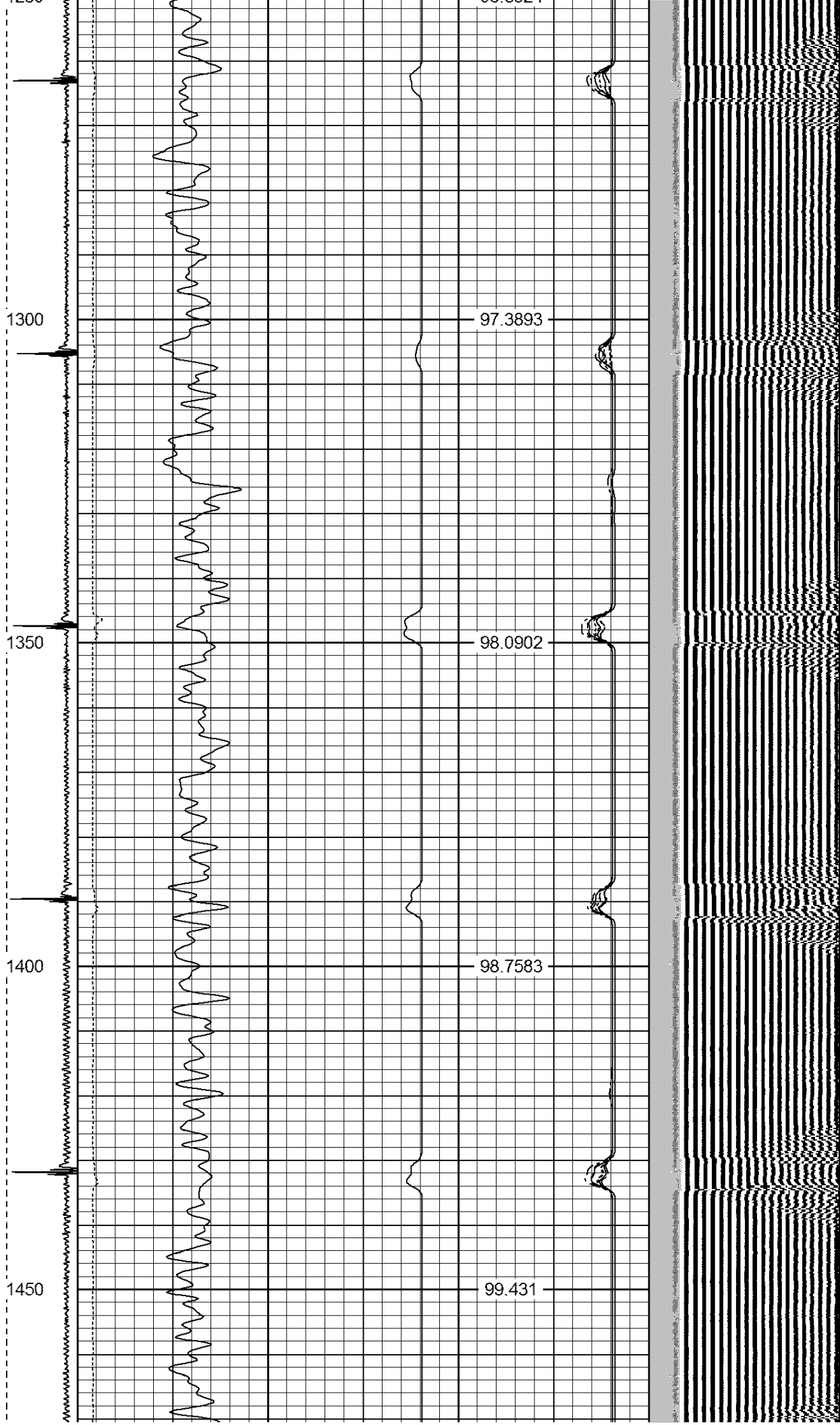


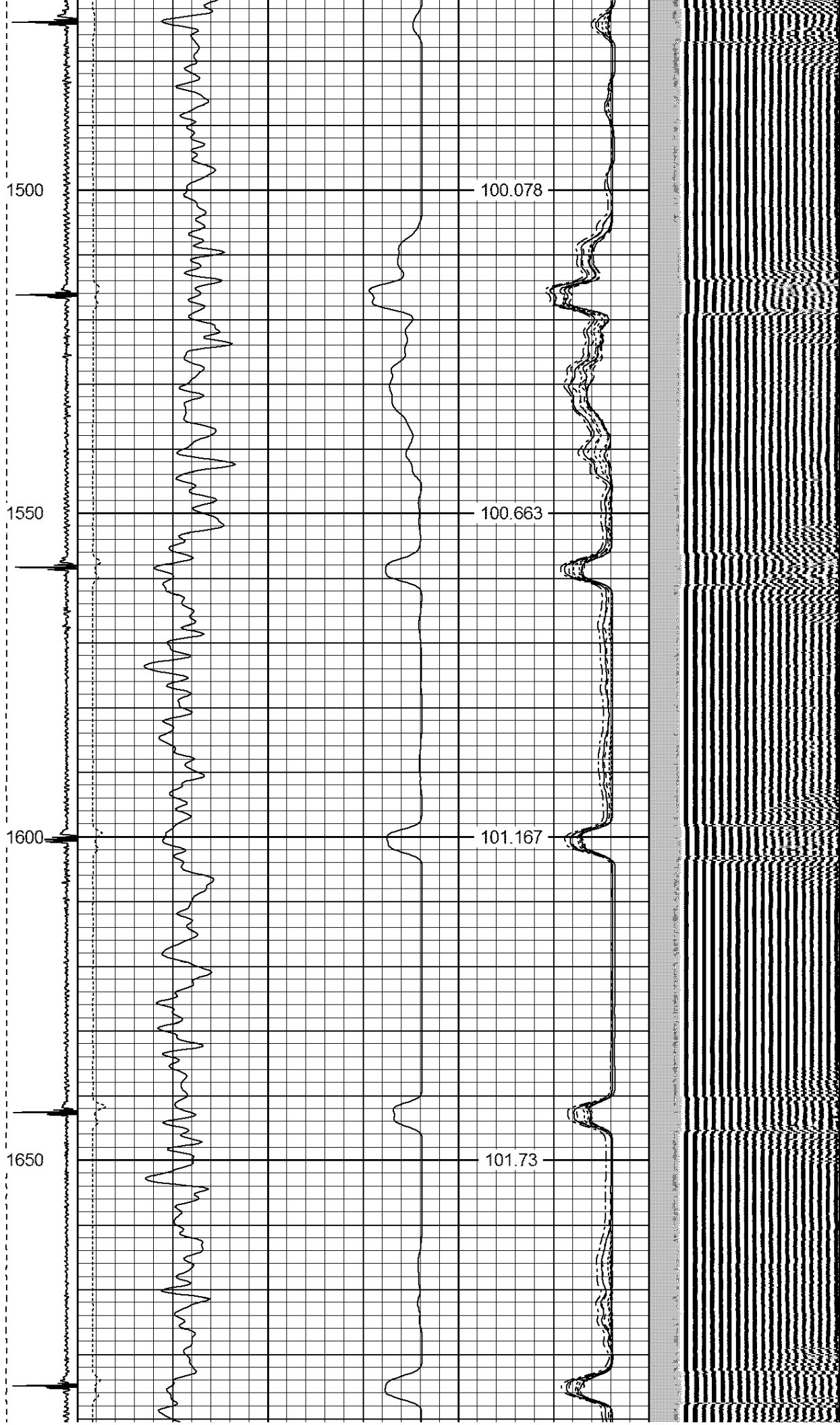






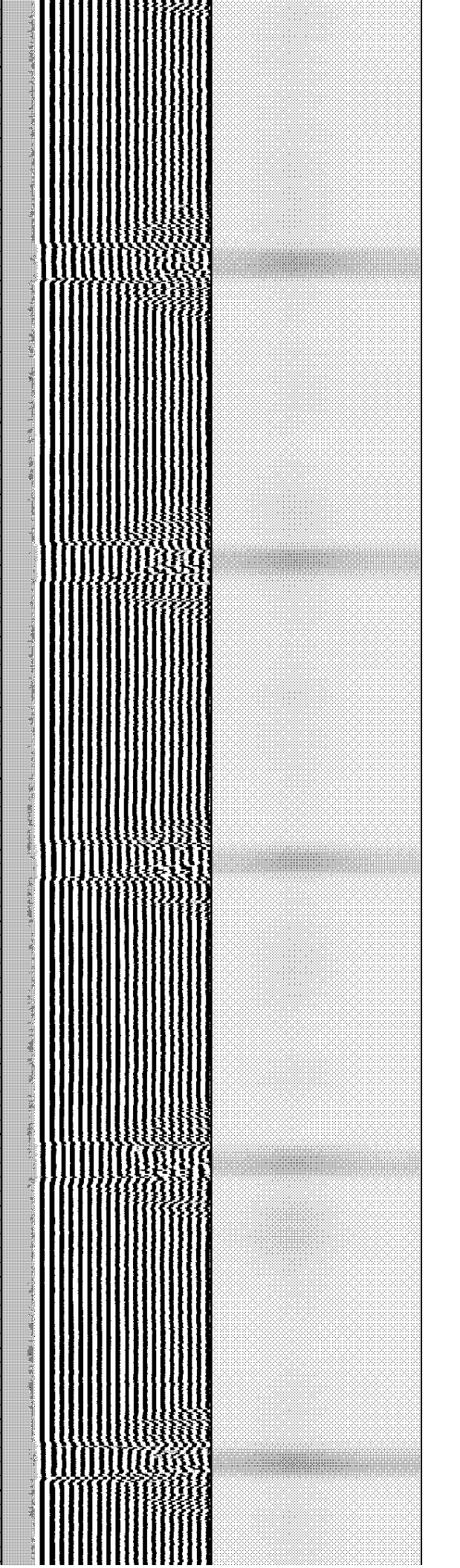


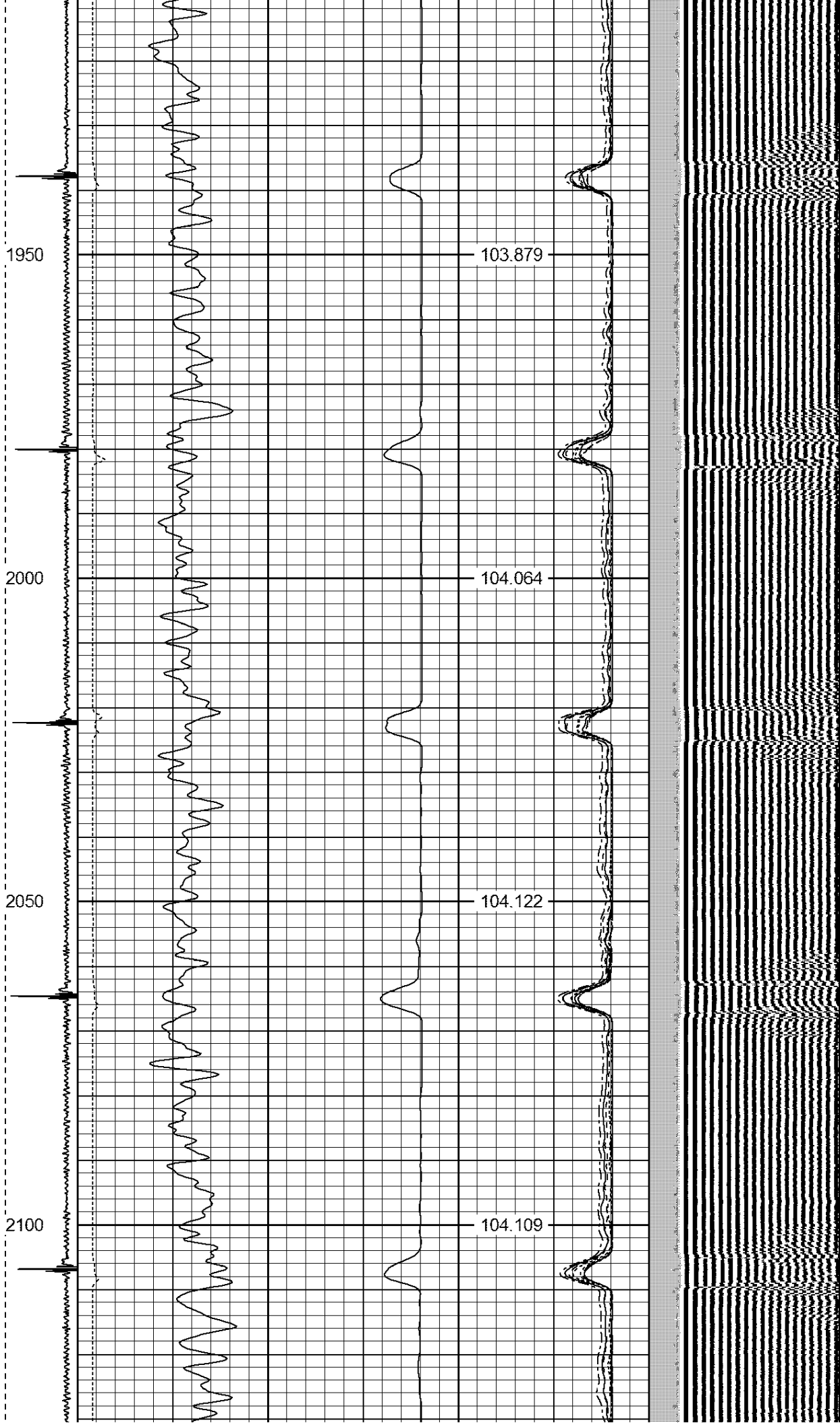


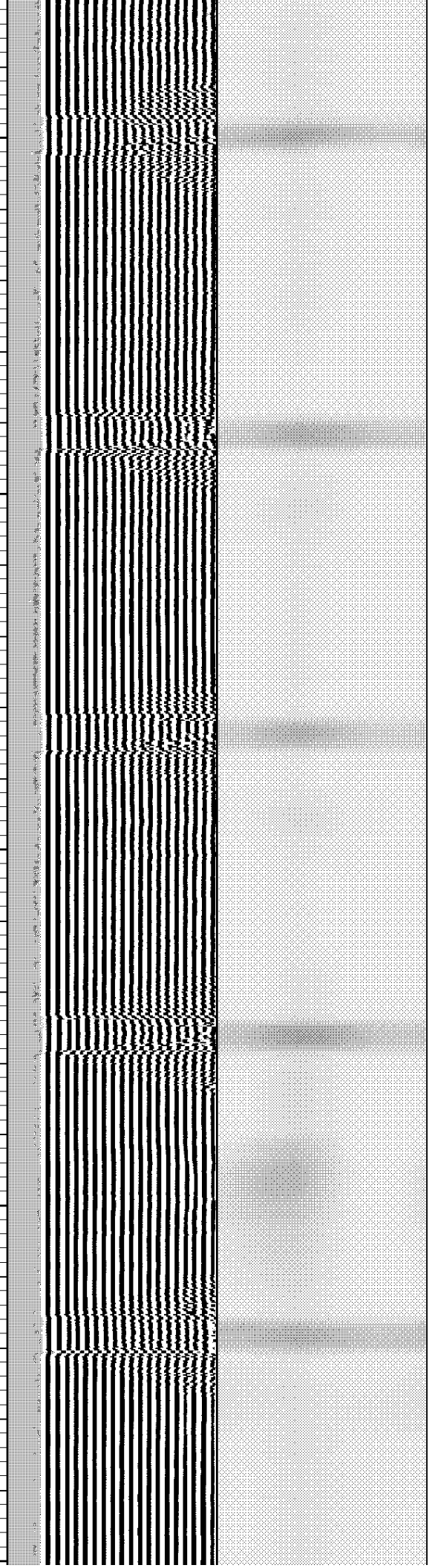
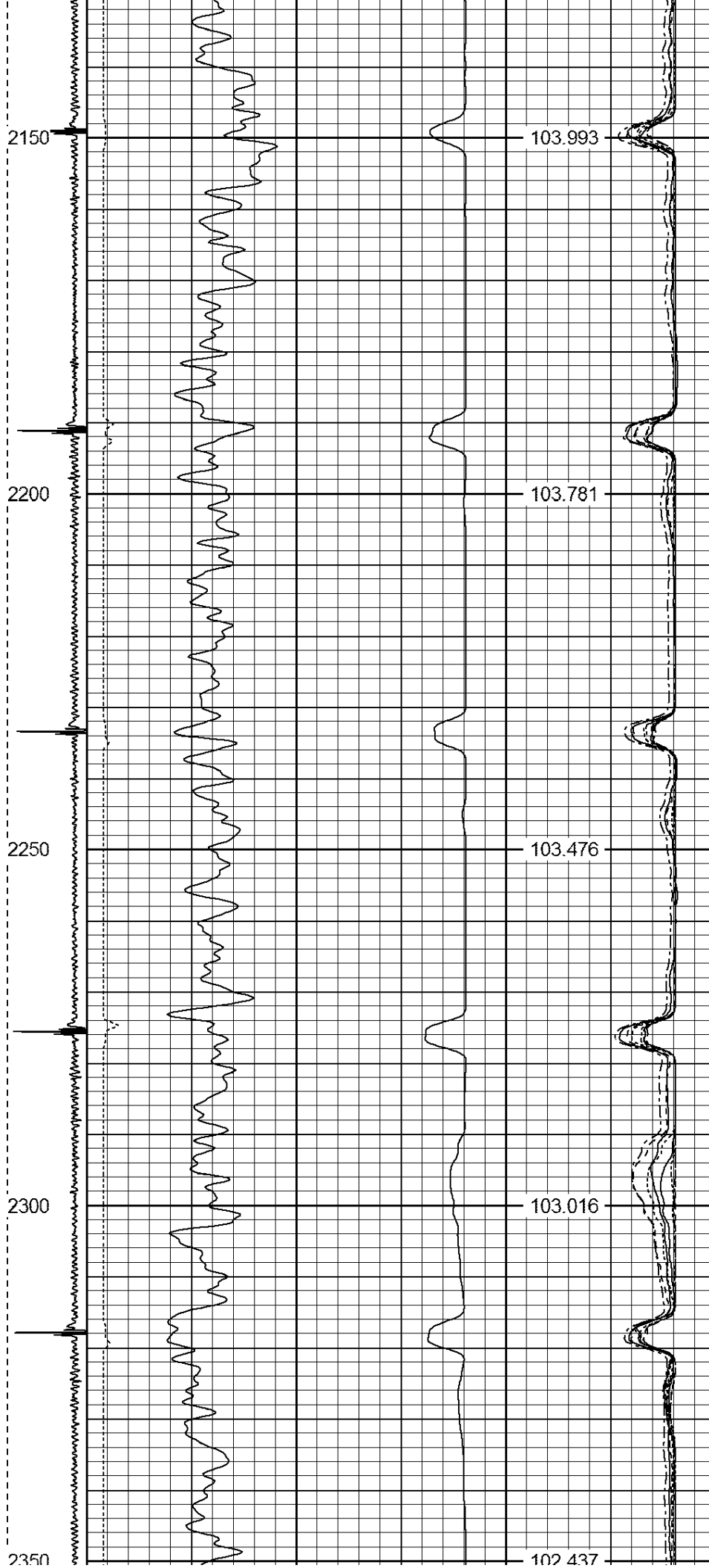


1700  
1750  
1800  
1850  
1900

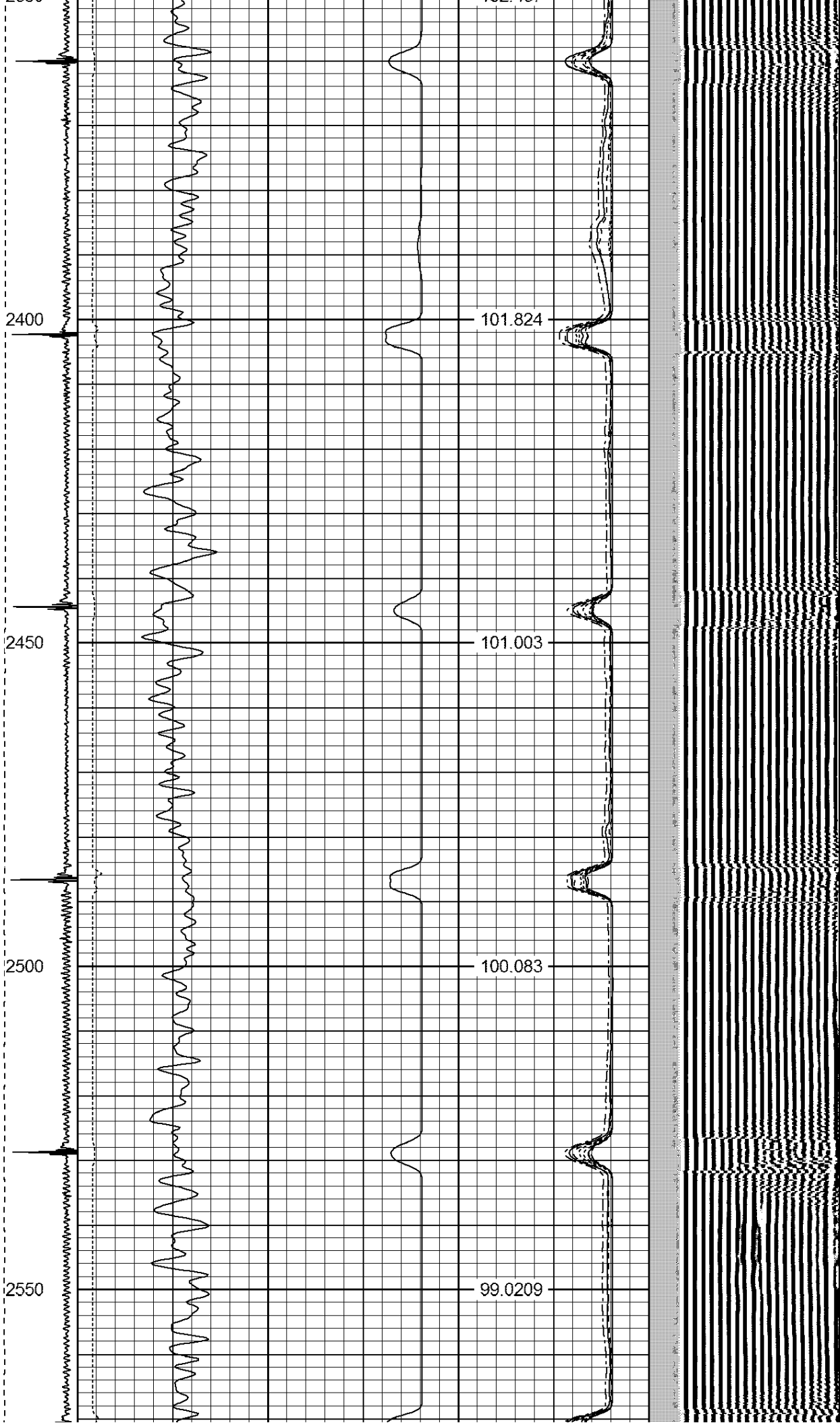
102.195  
102.692  
103.071  
103.502  
103.728





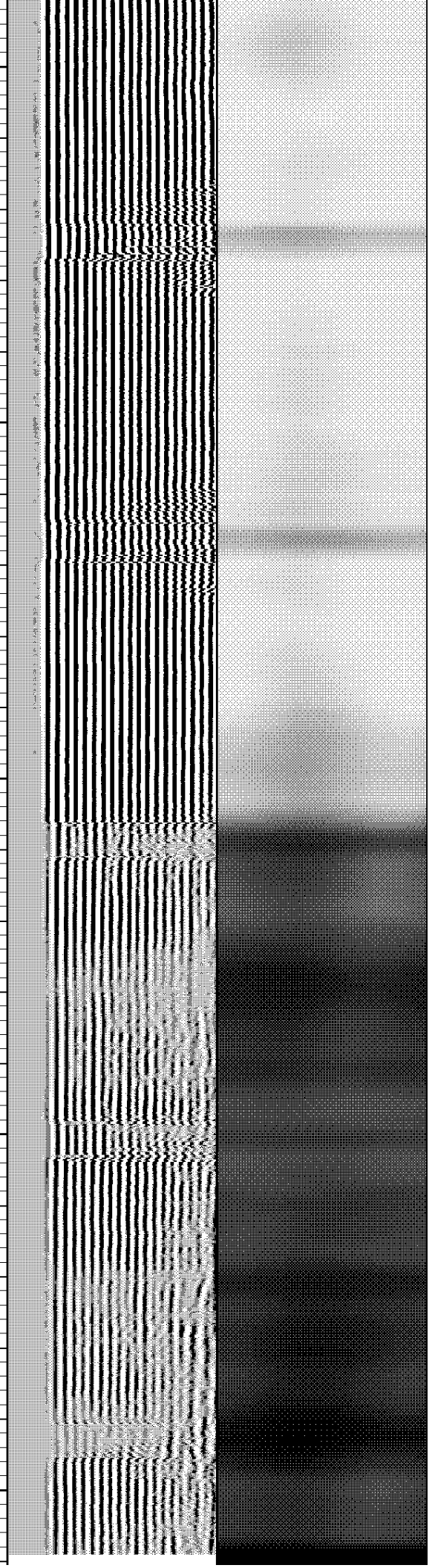
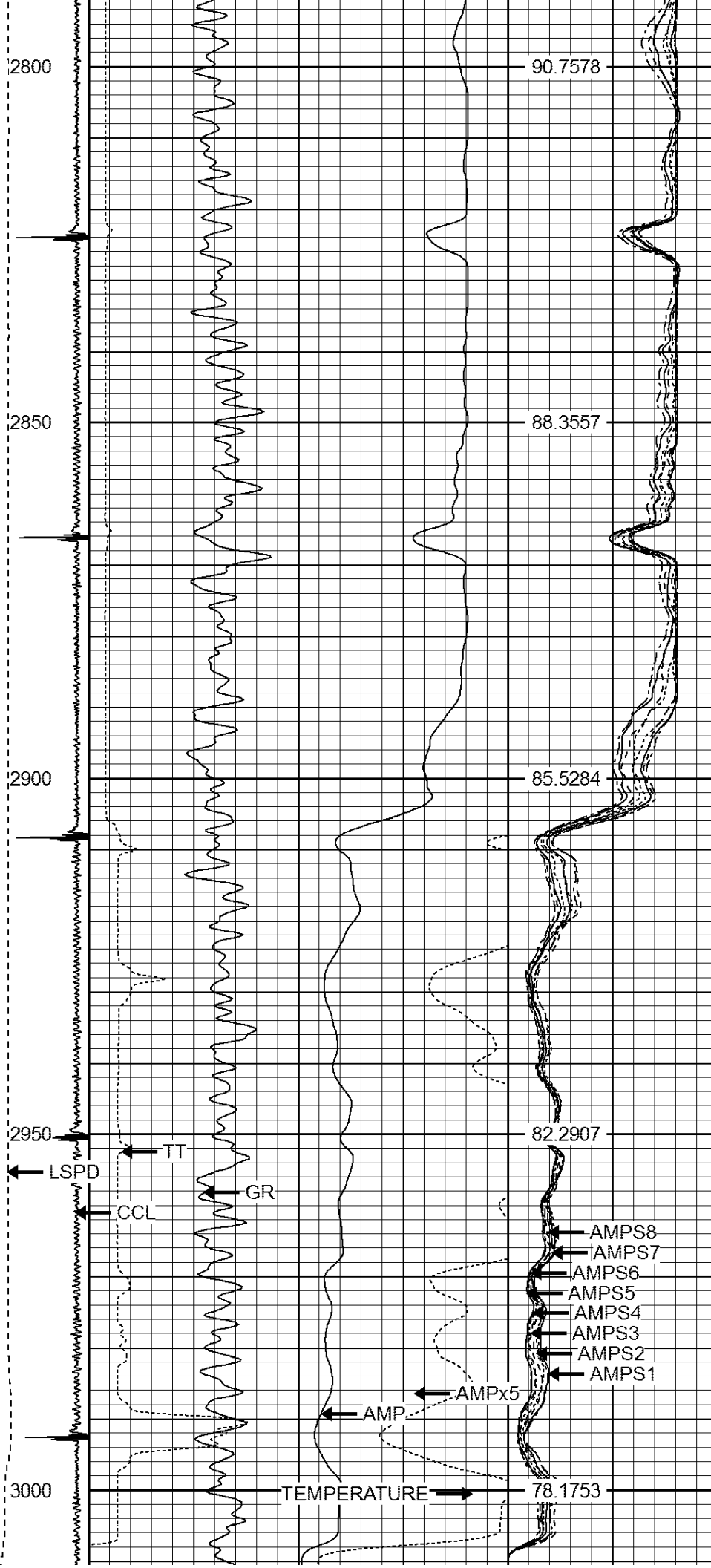














1)	Short Space	cps		
	Long Space	cps	pu	pu
2)	Short Space	cps		
	Long Space	cps	pu	pu
3)	Short Space	cps		
	Long Space	cps	pu	pu

### Segmented Cement Bond Log Calibration Report

Serial Number: Base  
Tool Model: Probe

Calibration Casing Diameter: 4.500 in  
Calibration Depth: 73.008 ft

Master Calibration, performed Sat Dec 05 19:25:30 2015:

	Raw (v)		Calibrated (mv)		Results	
	Zero	Cal	Zero	Cal	Gain	Offset
3'	0.003	2.500	2.000	81.196	31.713	1.915
CAL	1.454	2.500				
5'	0.003	2.500	2.000	81.196	31.712	1.916
SUM						
S1	0.005	2.500	0.500	81.000	32.269	0.328
S2	0.004	2.500	0.500	81.000	32.246	0.385
S3	0.005	2.500	0.500	81.000	32.258	0.354
S4	0.004	2.500	0.500	81.000	32.254	0.372
S5	0.003	2.455	0.500	81.000	32.828	0.411
S6	0.004	2.500	0.500	81.000	32.256	0.359
S7	0.007	2.500	0.500	81.000	32.285	0.286
S8	0.005	2.500	0.500	81.000	32.267	0.331

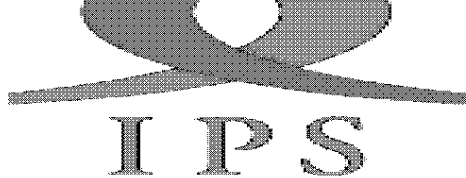
Internal Reference Calibration, performed Tue Jun 05 07:53:42 2012:

	Raw (v)		Calibrated (v)		Results	
	Zero	Cal	Zero	Cal	Gain	Offset
CAL	0.000	0.000	1.454	2.500	1.000	0.000

Air Zero Calibration, performed Sat Dec 05 19:13:48 2015:

	Raw (v)		Calibrated (v)		Results	
	Zero		Zero			Offset
3'	0.000		0.000			0.000
5'	0.000		0.000			0.000
SUM						
S1	0.000		0.000			0.000
S2	0.000		0.000			0.000
S3	0.000		0.000			0.000
S4	0.000		0.000			0.000
S5	0.000		0.000			0.000
S6	0.000		0.000			0.000
S7	0.000		0.000			0.000
S8	0.000		0.000			0.000





Well	BERRY 24-8
Field	WATTENBERG
County	WELD
State	CO