



Scale: 5" / 100'
Measured Depth Log

Well Name Carlson I-15-16HN

Location NENE SEC. 15 T5N R65W

State Colorado

County Weld

Country United States

Rig Number Frontier (Utah) 8

API Number 05-123-41719

AFE # 41719

Geographic Region DJ Basin

Field Wattenberg

Spud Date 10/6/2015

Drilling Completed 11/5/2015

Surface Coordinates 1055' FNL 354' FEL

Lat/Long: 40.403697/-104.641239

Bottom Hole Coordinates Projected:

SEC 16 T5N R65W
1900' FNL 470' FEL

Ground Elevation 4621'

K.B. Elevation 4643'

Logged Interval 6000' To 14870'

Total Depth 14870'

Formation Niobrara

Type of Drilling Fluid LSND

Operator

Company Bayswater Exploration & Production, LLC.

Address 730 17th St.
Denver, CO 80202

Geologist

Name Mark E. Brown

Company Bayswater Exploration & Production, LLC.

Address 730 17th St.
Denver, CO 80202



Other

Robert Davis Senior Lead Wellsite Geologist

Ben Katka Wellsite Geologist

Tracy Lawson Wellsite Geologist

Columbine Logging Computer 148

Bloodhound Unit 331

Zone Color Coding

- Oil
- Condensate
- Gas
- Note
- Core
- Pressure
- Error
- Water
- Seal

Rock Types

- UNKNOWN

ANHYDRITE

BENTONITE

BRECCIA

CHALK

CEMENT

CHERT

CLAY CHOKE SANC

CLAYSTONE

COAL

CONGLOMERATE

DOLOMITTE

DOLOMITIC LIMESTONE

GRANITE

GYPSUM

IGNEOUS

SIDERITE or LIMONITE

LIMESTONE

MARLSTONE

METAMORPHIC

NO SAMPLE

SALT

SANDSTONE

SALT-PEPPER SANC

SHALE

SHALE COLORED

SHALE GRAY

SHALY SANDSTONE

SHALY SILTSTONE

SILTY SHALE

SILTSTONE

TILL

TUFF

WELDED TUFF
- Accessories
- GASTROPOD

INOCERAMUS

OOLITE

OSTRACOD

PELECYPOD

PELLET

PISOLITE

PLANT REMAINS

PLANT SPORES

SCAPHOPOD

STROMATOPOROID

ARGILLITE GRAIN

BENTONITE

BITUMENOUS SUBSTANCE

BRECCIA FRAGMENTS

CALCAREOUS

CARBONACEOUS FLAKES

CHITK

CHTLT

COAL - THIN BEDS

DOLOMITIC

FELDSPAR

FERRUGINOUS PELLET

FERRUGINOUS

GLAUCONITE

GYPSIFEROUS

HEAVY MINERAL

KAOLIN

MARCASTITE

MARLSTONE

MICACEOUS

MINERAL CRYSTALS

NODULES

PHOSPHATE PELLETS

PYRITE

SALT CAST

SANDY

SIDERITE

SILICEOUS

SILTY

TUFFACEOUS

Fossils

Minerals

Stringer

Oil Show

P

PINPOINT

V

VUGGY

Engineering

D

DEAD

E

EVEN

Q

QUESTIONABLE

B

BIT

S

SPOTTED STAINING

C

CONNECTION (UP)

Porosity

C

CONNECTION (DOWN)

G

CONNECTION GAS

F

FENESTRAL

T

TRIP GAS

F

FRACTURE

T

TRIP GAS (LEFT)

I

INTERCRYSTALLINE

D

DOWN TIME GAS

I

INTEROOLITIC

M

MOLDIC

O

ORGANIC

C

CORE - LOST

R

CORE - RECOVERED

P

PINPOINT

V

VUGGY

Engineering

D

DEAD

E

EVEN

Q

QUESTIONABLE

B

BIT

S

SPOTTED STAINING

C

CONNECTION (UP)

Porosity

C

CONNECTION (DOWN)

G

CONNECTION GAS

F

FENESTRAL

T

TRIP GAS

F

FRACTURE

T

TRIP GAS (LEFT)

I

INTERCRYSTALLINE

D

DOWN TIME GAS

I

INTEROOLITIC

M

MOLDIC

O

ORGANIC

C

CORE - LOST

R

CORE - RECOVERED

Other Symbols

 DST INTERVAL  WIRELINE TESTED - LEFT **E** EARTHY

 FAULT  WIRELINE TESTED - RT **FX** FINELYXLN

 FORMATION TOP  DRILL STEM TEST **GS** GRAINSTONE

 GAS SHOW  MIN DEPTH **L** LITHOGRAPHIC


 OIL SHOW **MX** MICROXLN


 MIN DEPTH UP **MS** MUDSTONE

Rounding

 MIN DEPTH (DOWN) **A** ANGULAR **PS** PACKSTONE

 NORMAL FAULT **R** ROUNDED **WS** WACKESTONE

 OVERTURNED STRATA **B** SUBANG


 REVERSE FAULT **R** SUBRND

Sorting

 CASING **M** MODERATE

Textures

 SIDEWALL CORE (LEFT) **P** POOR

 SIDEWALL CORE (RIGHT) **BS** BOUNDSTONE **W** WELL

 SLIDE **C** CHALKY

 SURVEY **CX** CRYPTOXLN

Slide/Rotate

ROP

ROP (twh)

ROP

Total Gas & Chromatograph

GAS

C1
C2
C3
C4

Depth Labels

% Lith

Gamma

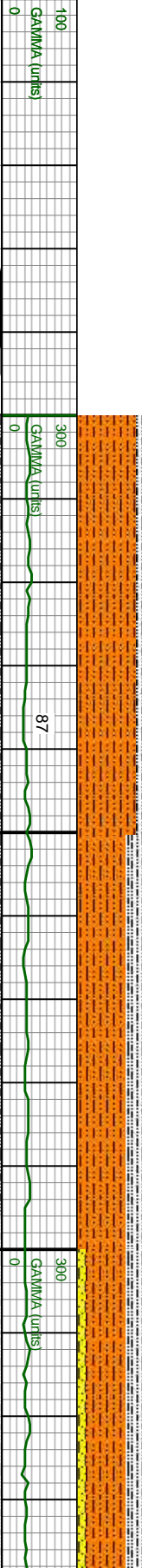
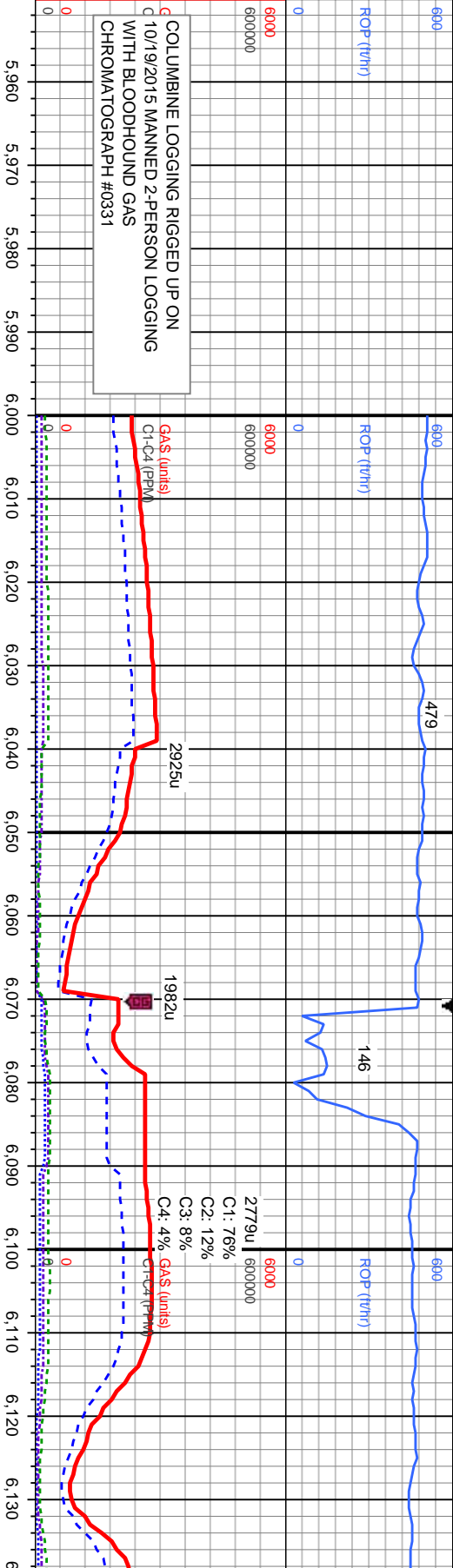
GAMMA

Well Bore
TVD

Oil Show

Oil Show

Images



BEGIN LOGGING F/ 6000' MD @
17:22 HRS ON 10/19/2015

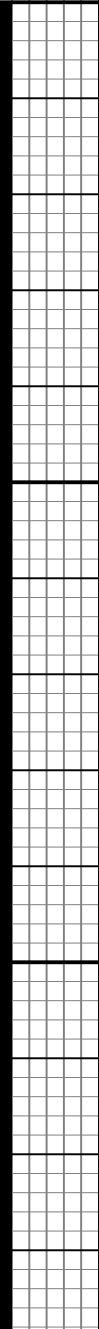
MD: 6.015'
TVD: 5,929.22'
Inclination: 1.5°
Azimuth: 158.9°
VS: -218.94'

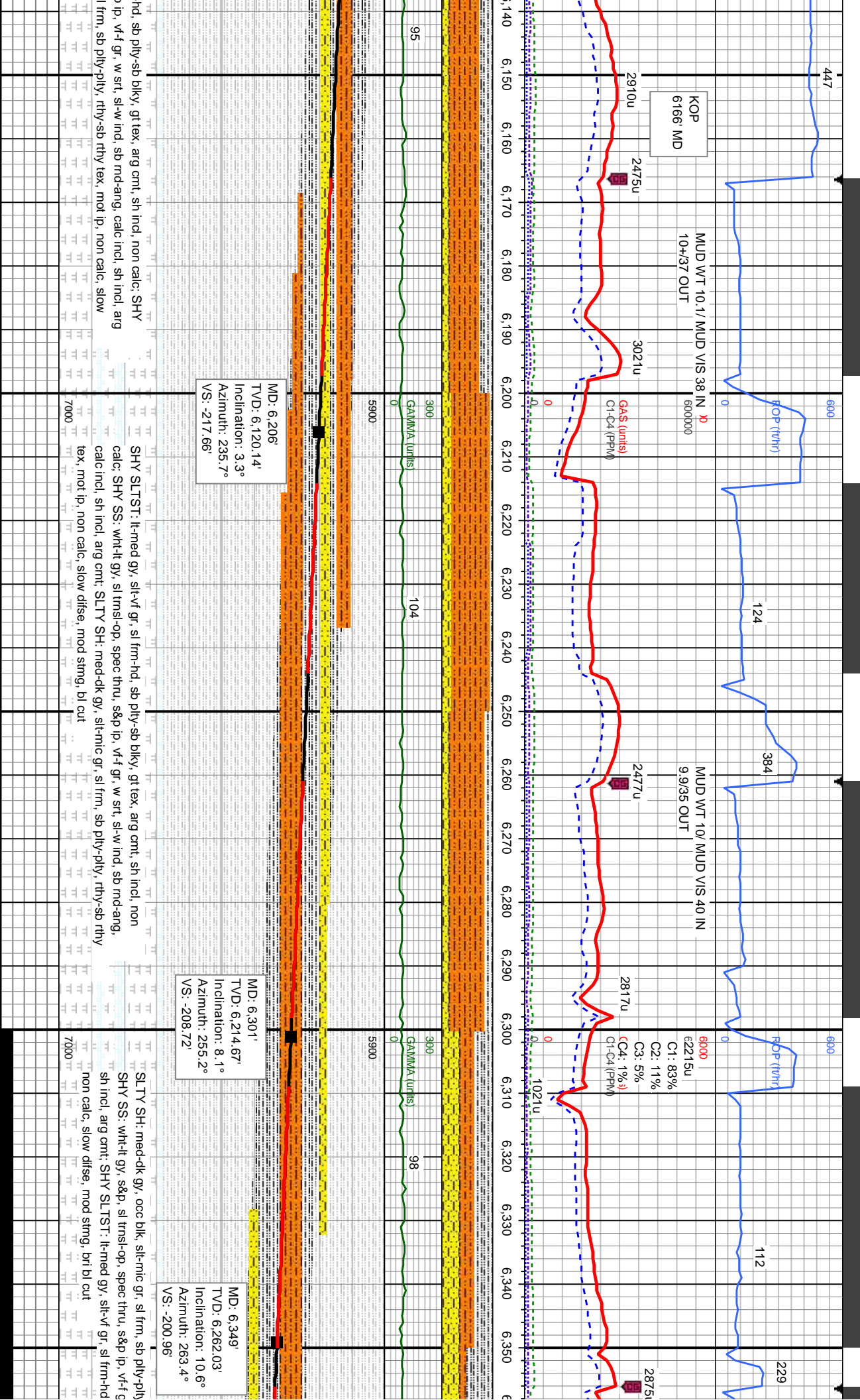
Bit Data
Bit #: 2
Type: U 519S
Size: 8.74
Depth In: 860'
Depth Out: 6,642'
Hours: 17.4 hrs
Avg Ft/Hr: 332.3 /hr
Jets: 3-18/3-16
S/N: 29254

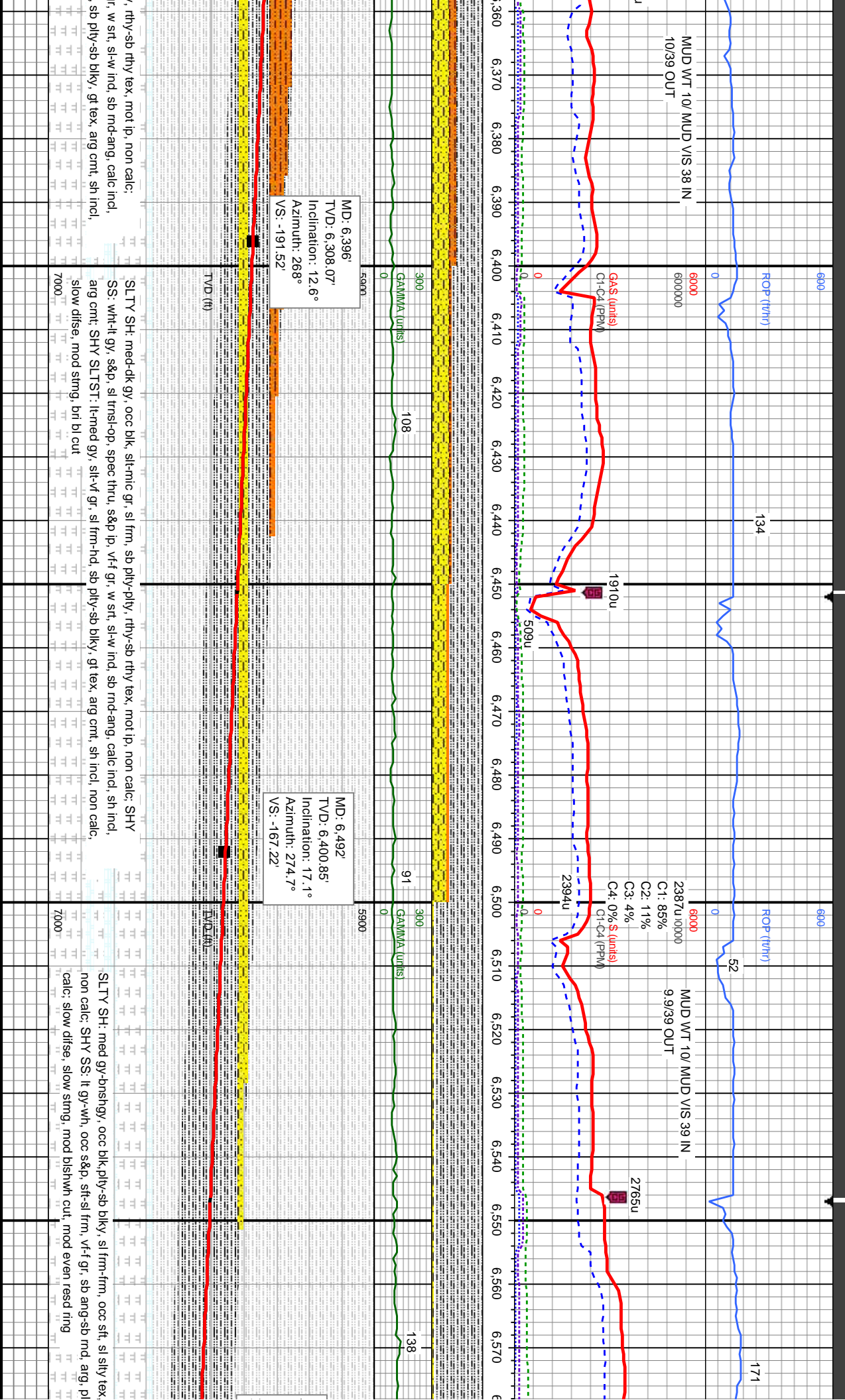
SHY SLTST: lt-med gy, slt-vf gr, sl frm-hd, sb ply-sb blk, gt tex, arg cnt, sh incl, non calc, SLTY SH: med-dk gy, slt-mic gr, sl frm, sb ply-ply, rhy-sb rhy tex, mot ip, tr SHY SS: slow difse, mod string, bl cut

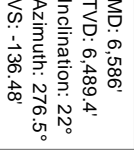
MD: 6.111'
TVD: 6,025.2'
Inclination: 1.1°
Azimuth: 147.1°
VS: -219.67'

SHY SLTST: lt-med gy, slt-vf gr, sl frm
SS: wht-lt gy, slt-mic gr, spec thru, s&g
cnt, SLTY SH: med-dk gy, slt-mic gr, s
difse, mod string, bl cut









SLTY SH: med gy-bnshgy, occ blk, ply-sb blk, sl firm-fm, sl silty tex, sl rthy lstr, non calc; slow difse, slow stmg, mod blshwh cut, mod even resd ring

SLTY SH: med gy-bnshgy, occ blk, ply-sb blk, s
firm-fm, sl stly tex, non calc; occ bent; slow disse,
slow string, mod bishwh cut, mod even resd ring

SLTY SH: med gy-gyshbik, ply-sb ply, sl frm-frm, occ sft, sl silty tex, non calc, occ bent; slow difse, slow strng, mod blshwh cut, mod even resd ring

CHK: lt-med gy, str, sb plyv-blky, brit, sl sft, sb rthy-sm tex, v calc; SLTY SH: med-ck gy-blk, slt-mic gr, sl frm, sb plyv-ply, rthy-sb rthy tex, mot ip, non calc, arg, bent, t MRLST, med difse, mod stfmg, bri blstwh cut, bri mod even-bloody ring

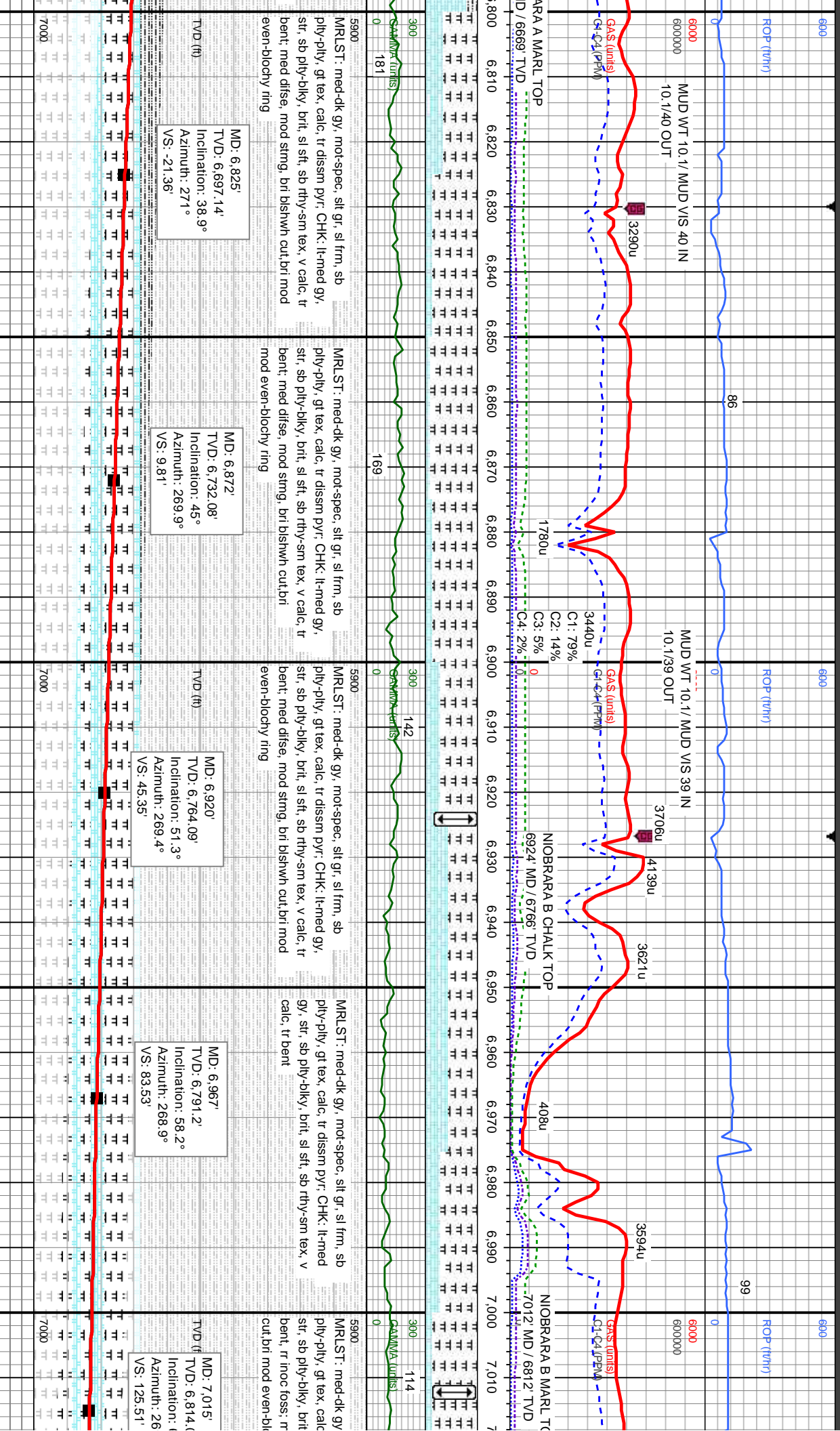
MD: 6,777'
TVD: 6,658.35'
Inclination: 33.2°
Azimuth: 270.1°
VS: -49.39'

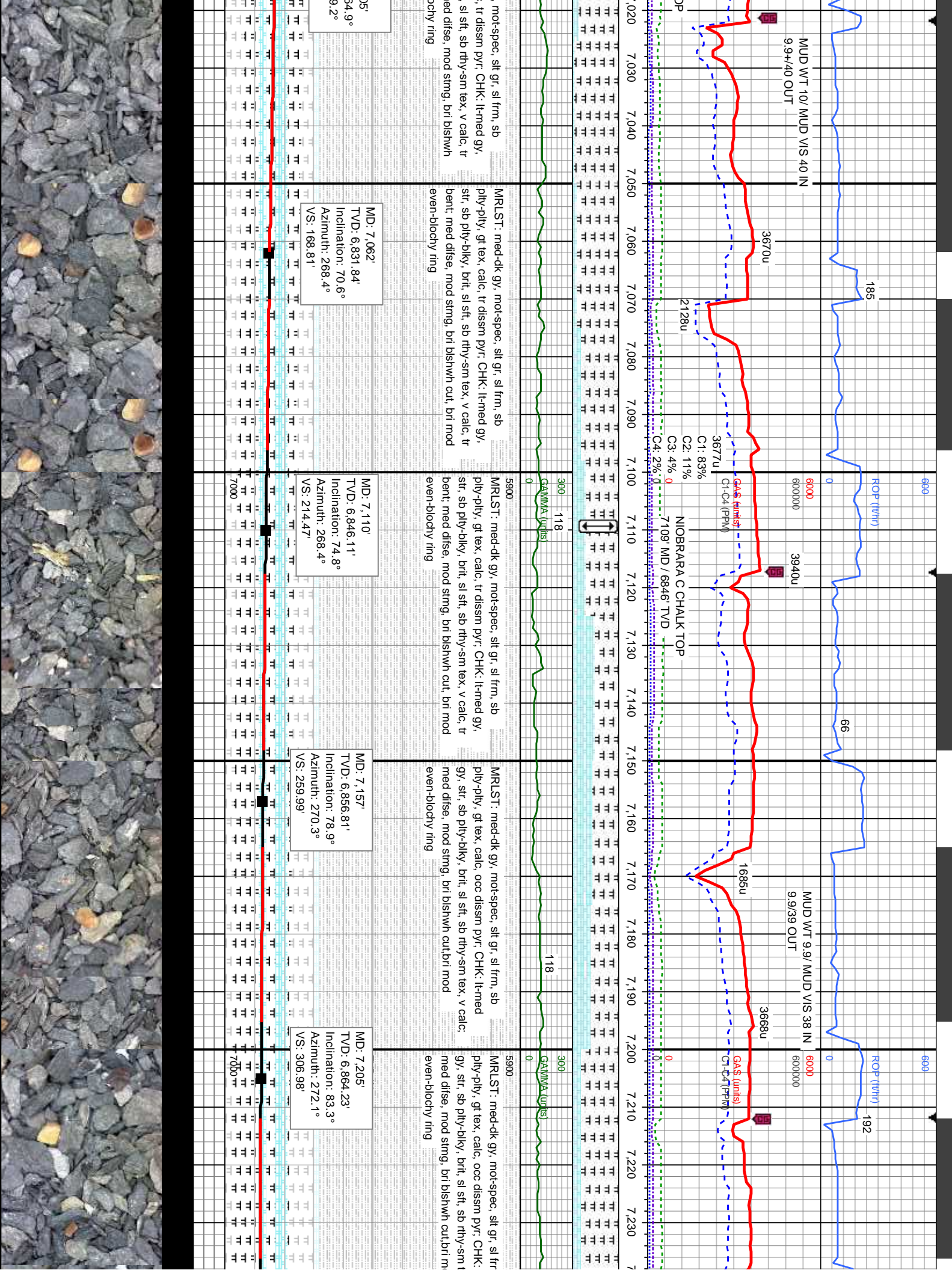
Bit Data
 Bit #: 3
 Type: U519S
 Size: 8.75
 Depth In: 6,442'
 Depth Out: 7,310'
 Hours: 5.8 hrs
 Avg Fv/Hr: 149.66 '/hr
 Jets: 3-18/3-16
 S/N: 29256

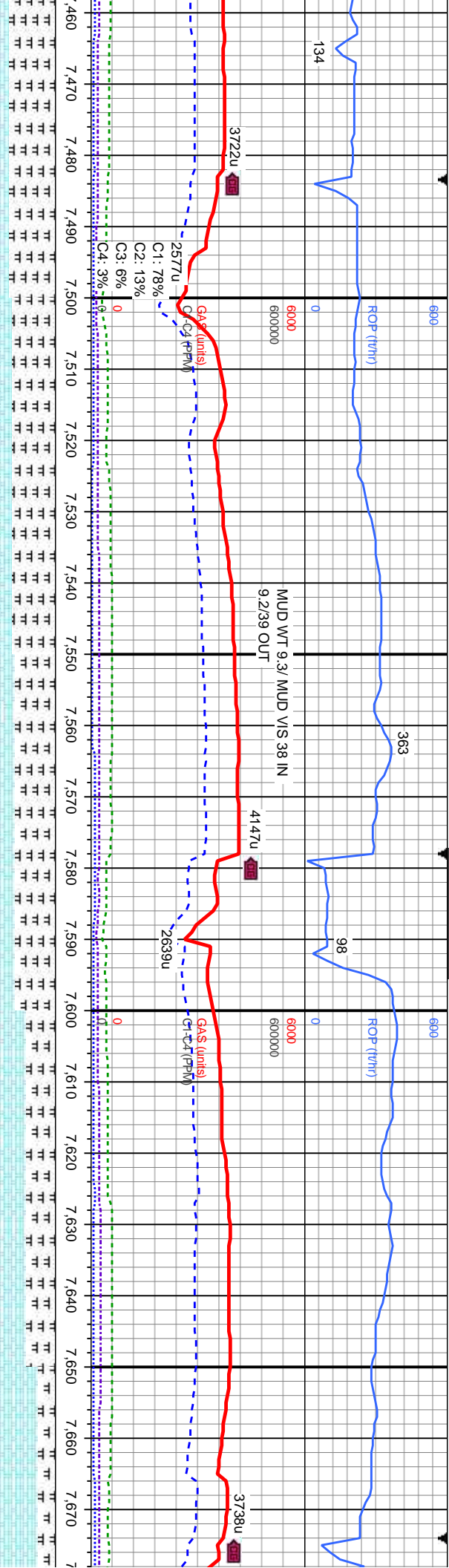
TVD: 6,576.41'
 Inclination: 27.9°
 Azimuth: 273.6°
 VS: -96.8'

TV D: 6,618.36'
Inclination: 30.2°
Azimuth: 273.1°
VS: -73.84'



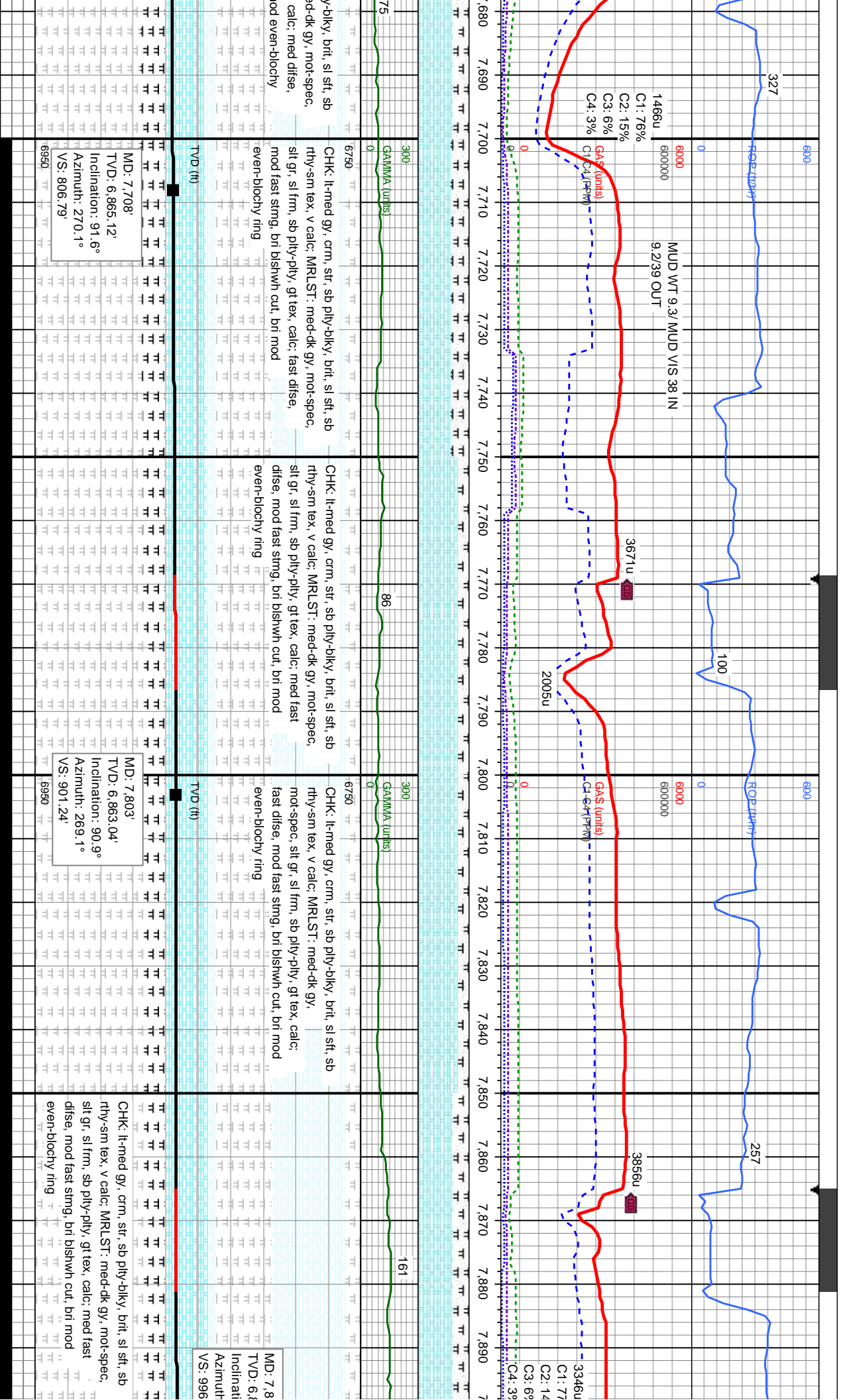


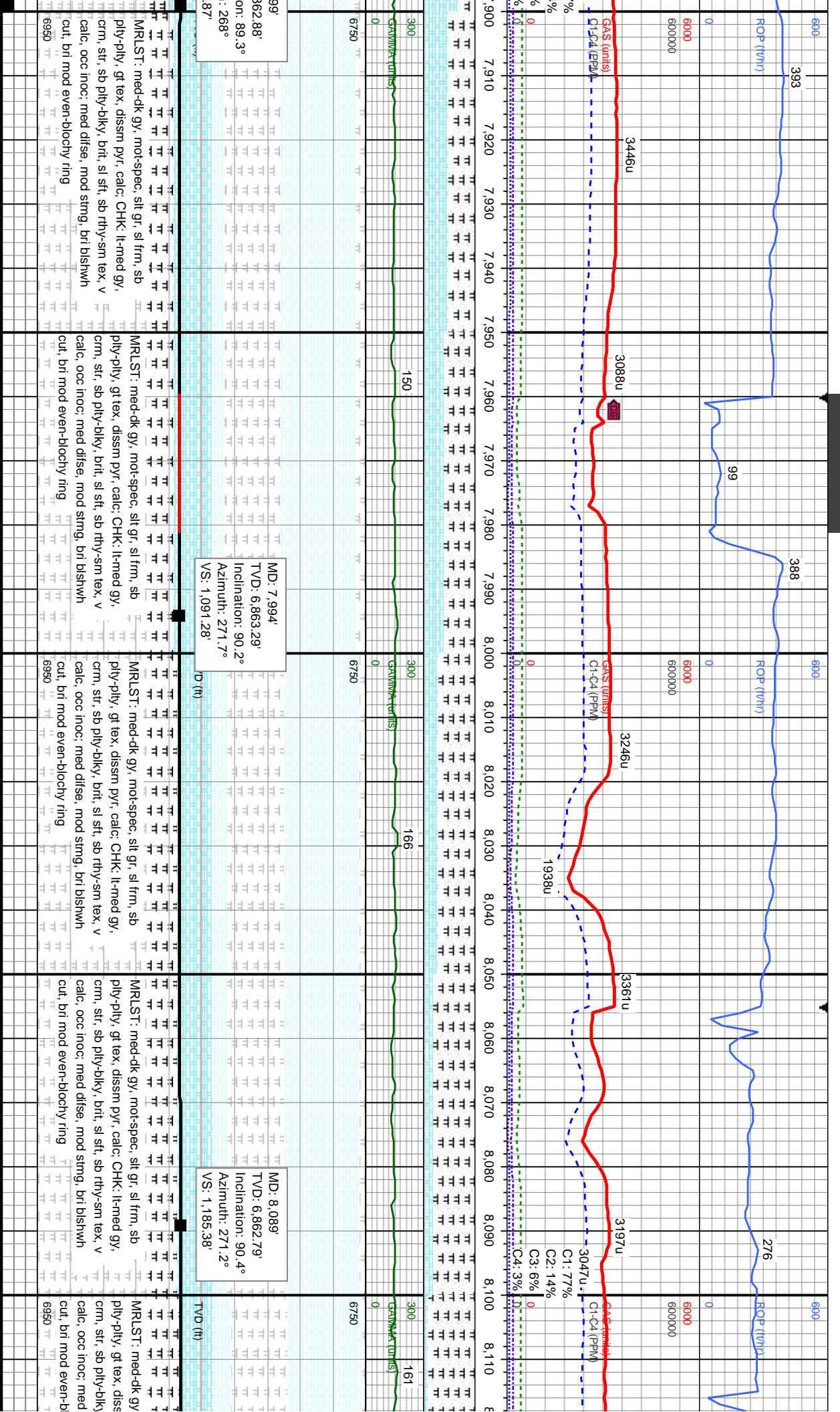




med-dk gy, mot-spec, slt gr, sl frm, sb gt tex, calc: CHK: lt-med gy, str, sb , brt, sl sft, sb rthy-sm tex, v calc: med mod string, brt blshw cut, brt mod	med-dk gy, mot-spec, slt gr, sl frm, sb ply-ply, gt tex, calc: CHK: lt-med gy, str, sb ply-biky, brt, sl sft, sb rthy-sm tex, v calc: med difse, mod string, brt blshw cut, brt mod even-blochy ring	med-dk gy, mot-spec, slt gr, sl frm, sb ply-ply, gt tex, calc: CHK: lt-med gy, str, sb ply-biky, brt, sl sft, sb rthy-sm tex, v calc: med difse, mod string, brt blshw cut, brt mod even-blochy ring	CHK: lt-med gy, crm, str, sb ply-biky, brt, sl sft, sb rthy-sm tex, v calc: MRLST: med-dk gy, mot-spec, slt gr, sl frm, sb ply-ply, gt tex, calc: med difse, mod string, brt blshw cut, brt mod even-blochy ring	CHK: lt-med gy, crm, str, sb ply-ply, gt tex, rthy-sm tex, v calc: MRLST: med-dk gy, mot-spec, slt gr, sl frm, sb ply-ply, gt tex, mod string, brt blshw cut, brt r ring
133	108	108	108	108
6750	6750	6750	6750	6750
6950	6950	6950	6950	6950
TVD (ft)	TVD (ft)	TVD (ft)	TVD (ft)	TVD (ft)
MD: 7.517' TVD: 6.867.78' Inclination: 90° Azimuth: 269.1° VS: 617.08'	MD: 7.613' TVD: 6.867.11' Inclination: 90.8° Azimuth: 270.7° VS: 712.49'	MD: 7.613' TVD: 6.867.11' Inclination: 90.8° Azimuth: 270.7° VS: 712.49'	MD: 7.613' TVD: 6.867.11' Inclination: 90.8° Azimuth: 270.7° VS: 712.49'	MD: 7.613' TVD: 6.867.11' Inclination: 90.8° Azimuth: 270.7° VS: 712.49'

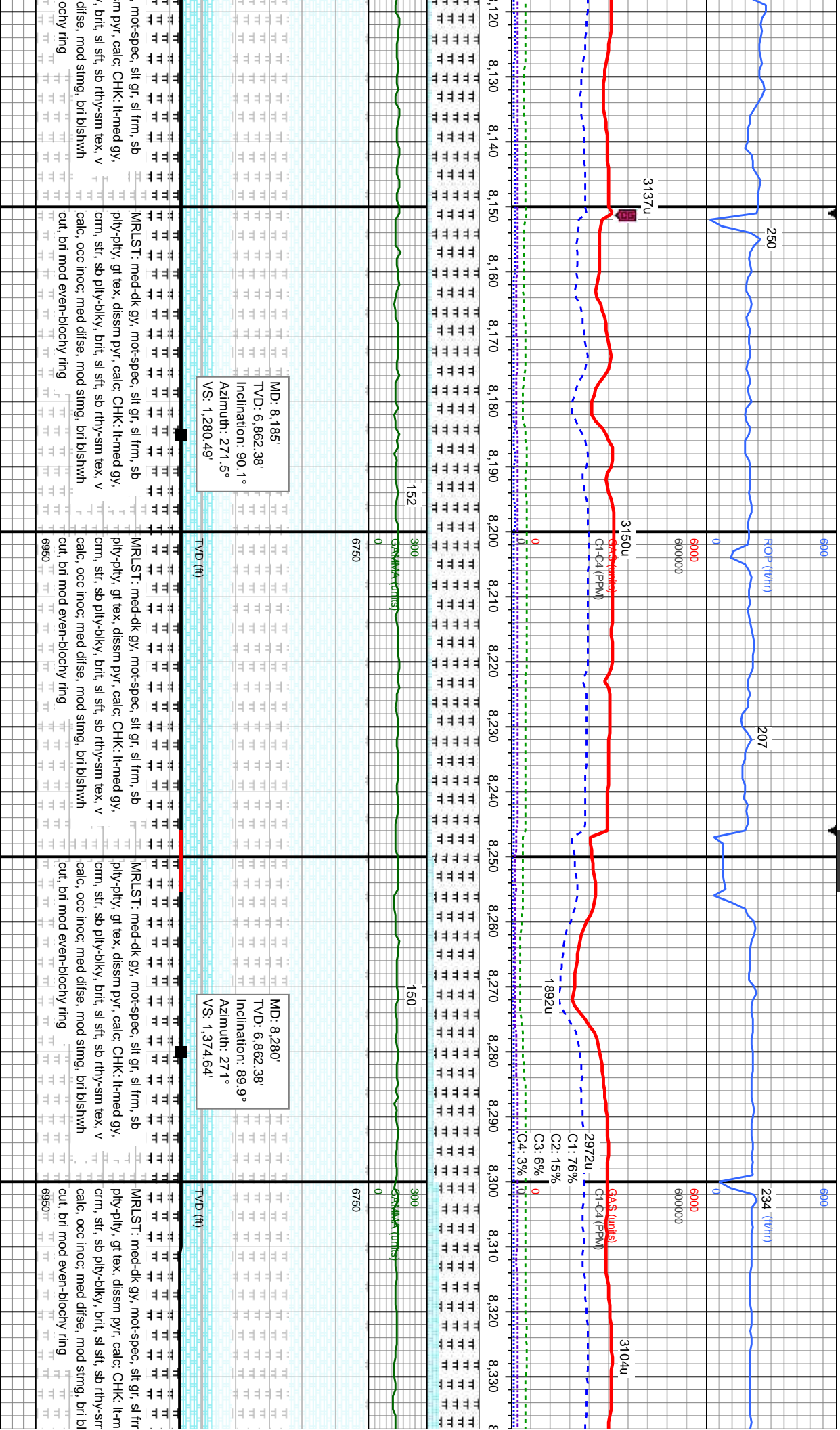


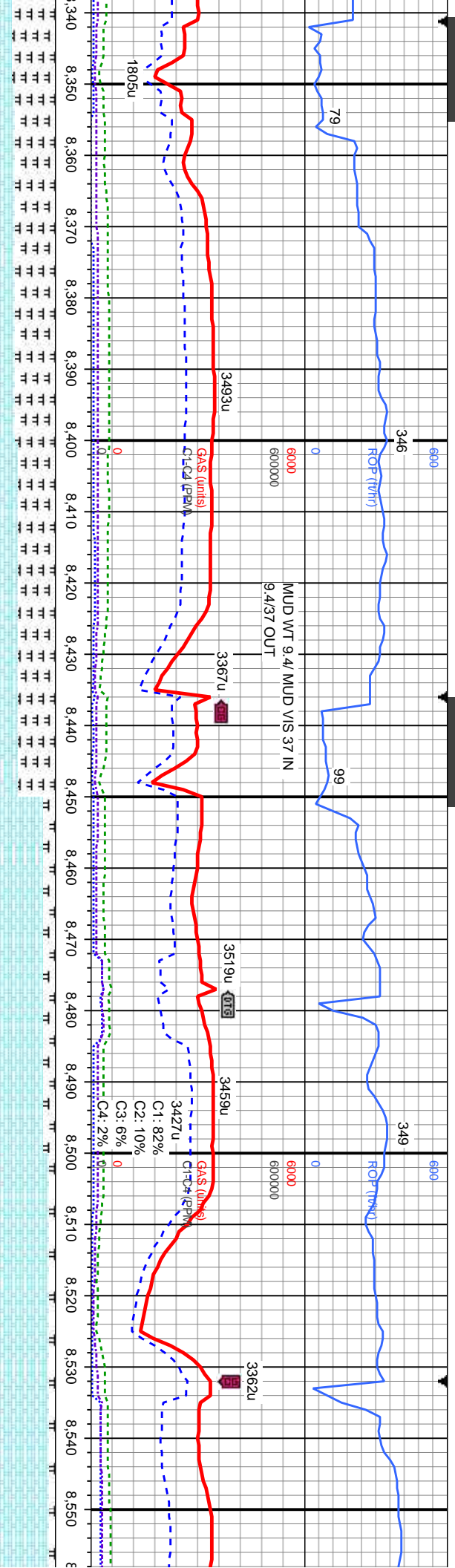




99°
on: 89.3°
: 268°
.87







MD: 8.374'
TVD: 6,863.93'
Inclination: 88.2°
Azimuth: 268.7°
VS: 1,468.05'

C Chalk

MD: 8.469'
TVD: 6,865.92'
Inclination: 89.4°
Azimuth: 269.4°
VS: 1,562.59'

B Marl

C Chalk

MR.LST: med-dk gy, mot-spec, slt gr, sl frm, sb
ply-pty, gt tex, dissn pyr, calc, CHK: lt-med gy,
crm, str, sb ply-biky, brt, sl sft, sb rthy-sm tex, v
calc, occ inoc, med difse, mod string, bri blshwh
cut, bri mod even-blochy ring

MR.LST: med-dk gy, mot-spec, slt gr, sl frm, sb
ply-pty, gt tex, dissn pyr, calc, CHK: lt-med gy,
crm, str, sb ply-biky, brt, sl sft, sb rthy-sm tex, v
calc, occ inoc, med difse, mod string, bri blshwh
cut, bri mod even-blochy ring

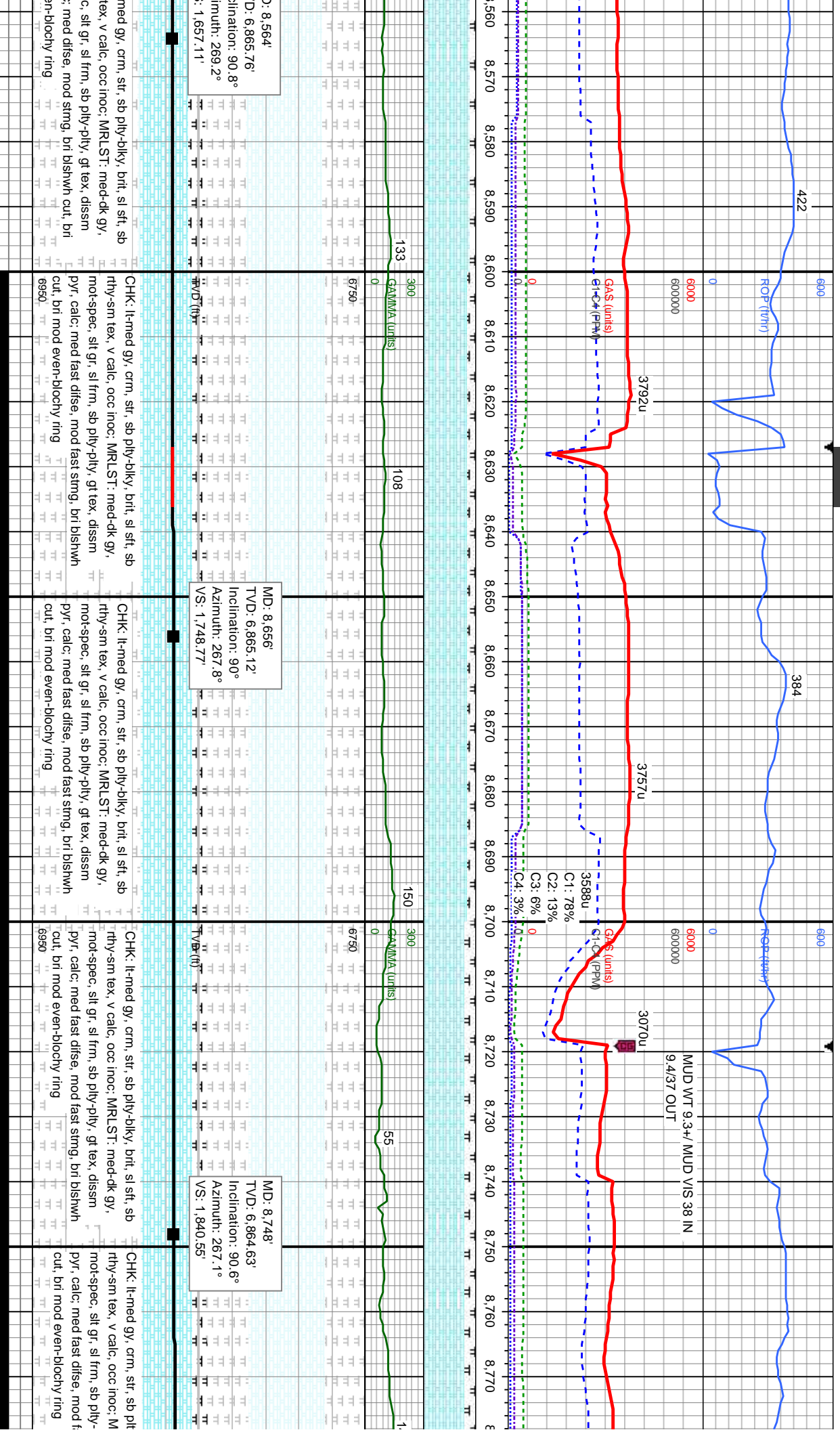
CHK: lt-med gy, crm, str, sb ply-biky, brt, sl sft, sb
rthy-sm tex, v calc, occ inoc, MR.LST: med-dk gy,
mot-spec, slt gr, sl frm, sb ply-pty, gt tex, dissn
pyr, calc, med difse, mod string, bri blshwh cut, bri
mod even-blochy ring

CHK: lt-med gy, crm, str, sb ply-biky, brt, sl sft, sb
rthy-sm tex, v calc, occ inoc, MR.LST: med-dk gy,
mot-spec, slt gr, sl frm, sb ply-pty, gt tex, dissn
pyr, calc, med difse, mod string, bri blshwh cut, bri
mod even-blochy ring

MD: 8.469'
TVD: 6,865.92'
Inclination: 89.4°
Azimuth: 269.4°
VS: 1,562.59'

CHK: lt-med gy, crm, str, sb ply-biky, brt, sl sft, sb
rthy-sm tex, v calc, occ inoc, MR.LST: med-dk gy,
mot-spec, slt gr, sl frm, sb ply-pty, gt tex, dissn
pyr, calc, med difse, mod string, bri blshwh cut, bri
mod even-blochy ring





690

ROP (t/h)

88

0

6000

600000

690

ROP (t/h)

308

0

6000

600000

690

ROP (t/h)

303

0

6000

600000

690

ROP (t/h)

303

0

6000

600000

MINDEPTH
11/3/2015

GAS (units)
C1-C4 (PPM)

3260u

2986u

GAS (units)
C1-C4 (PPM)

2768u

2735u

GAS (units)
C1-C4 (PPM)



GAMMA (units)

300

0

300

0

300

0

MD: 9.023'

TVD: 6.861.84'

Inclination: 89.7°

Azimuth: 268.5°

VS: 2.114.61'

B Marl

C Chalk

CHK: It-med gy, crm, str, sb ply-blky, brit, sl sft, sb

rthy-sm tex, v calc; MRLST: med-dk gy, mot-spec,

slt gr, sl frm, sb ply-ply, gt tex, diss pyr, calc;

med fast difse, mod fast stmg, bri blshwh cut, bri

mod even-blochy ring

6950

MD: 9.115'

TVD: 6.862.08'

Inclination: 90°

Azimuth: 268.5°

VS: 2.206.27'

B Marl

C Chalk

CHK: It-med gy, crm, str, sb ply-blky, brit, sl sft, sb

rthy-sm tex, v calc; MRLST: med-dk gy, mot-spec,

slt gr, sl frm, sb ply-ply, gt tex, diss pyr, calc;

med fast difse, mod fast stmg, bri blshwh cut, bri

mod even-blochy ring

6950

MD: 9.207'

TVD: 6.862.56'

Inclination: 89.4°

Azimuth: 265.7°

VS: 2.298.08'

B Marl

C Chalk

MRLST: med-dk gy

ply-ply, gt tex, diss

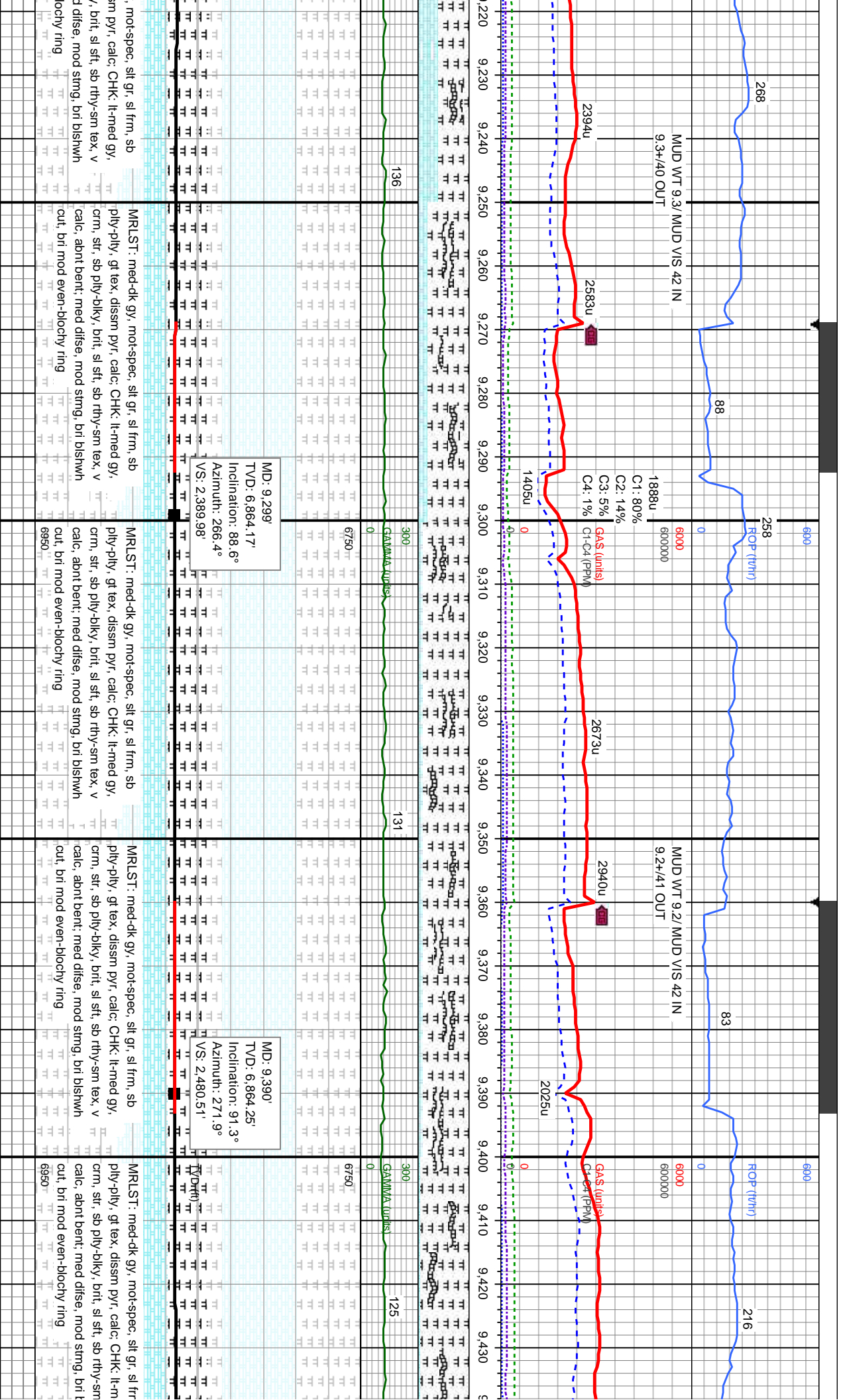
crm, str, sb ply-blky,

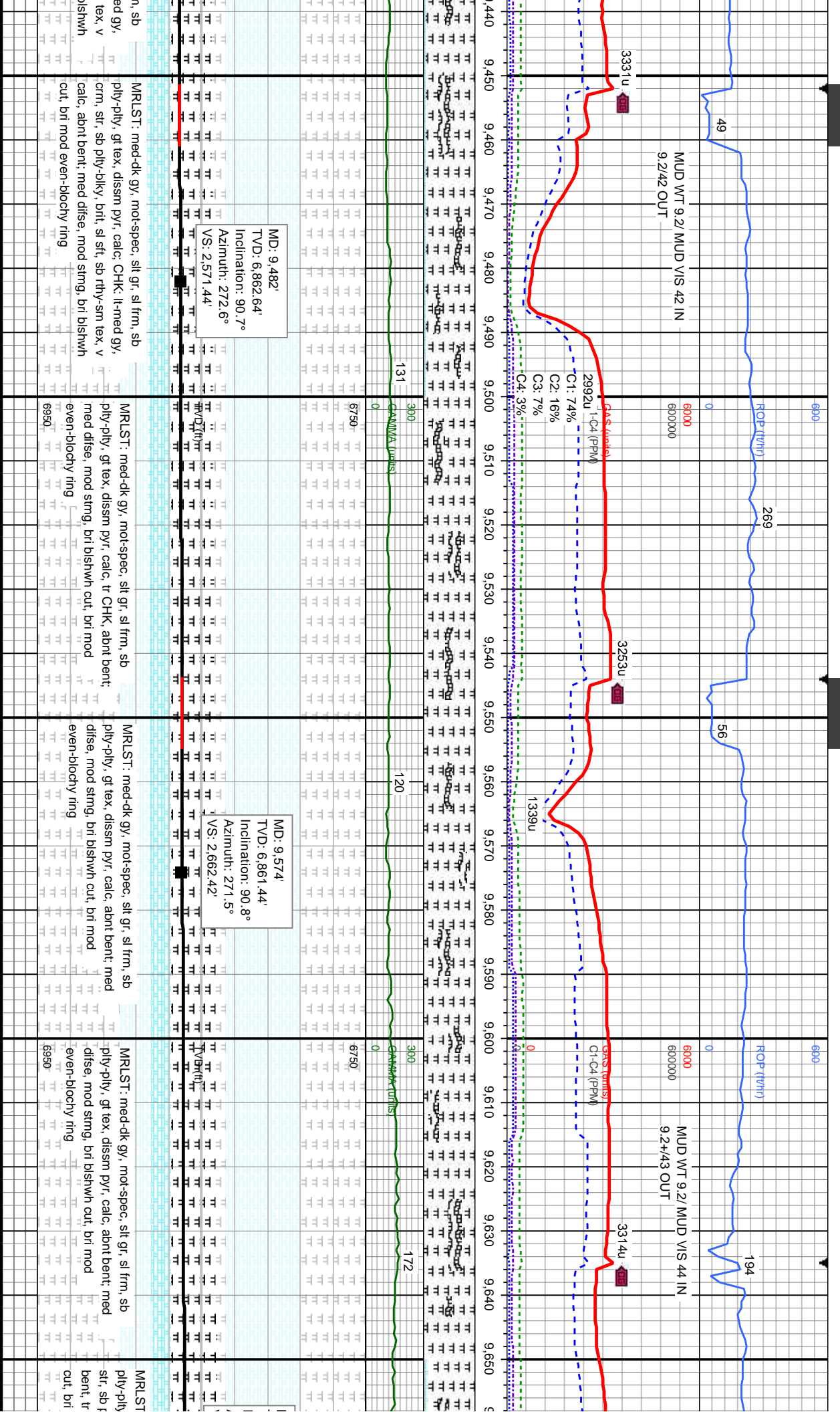
calc, abnt bent, med

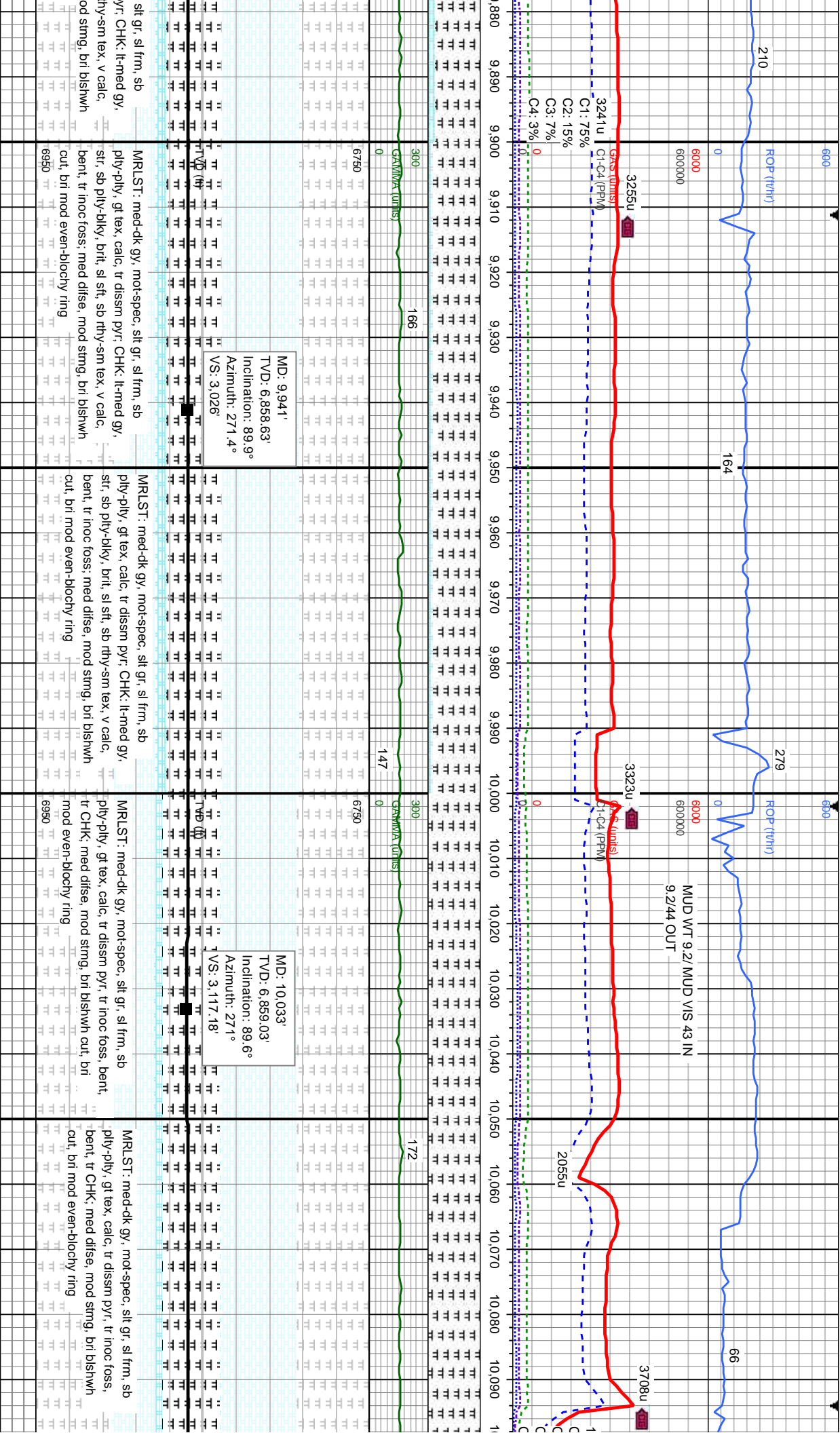
cut, bri mod even-b

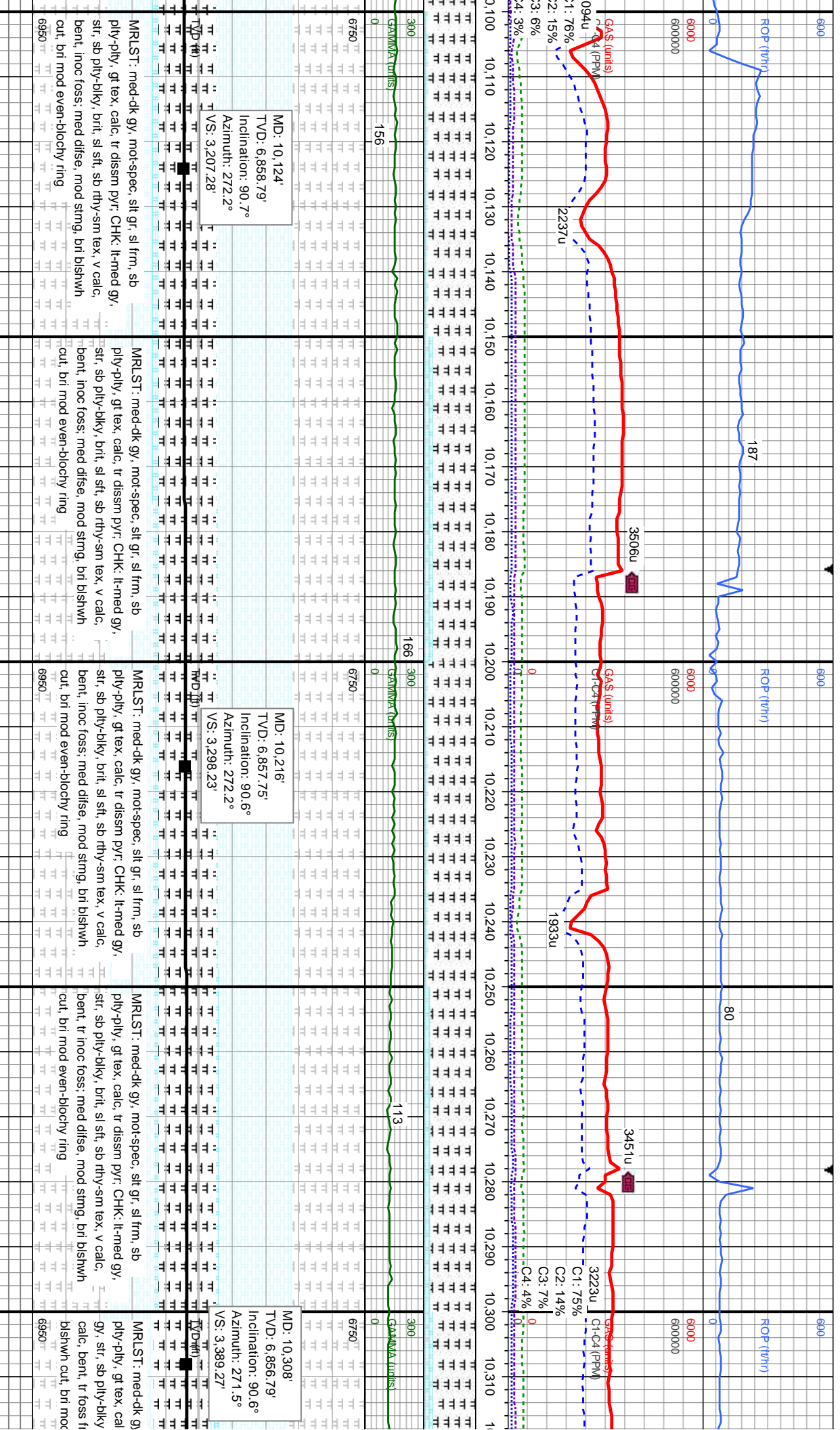
6950

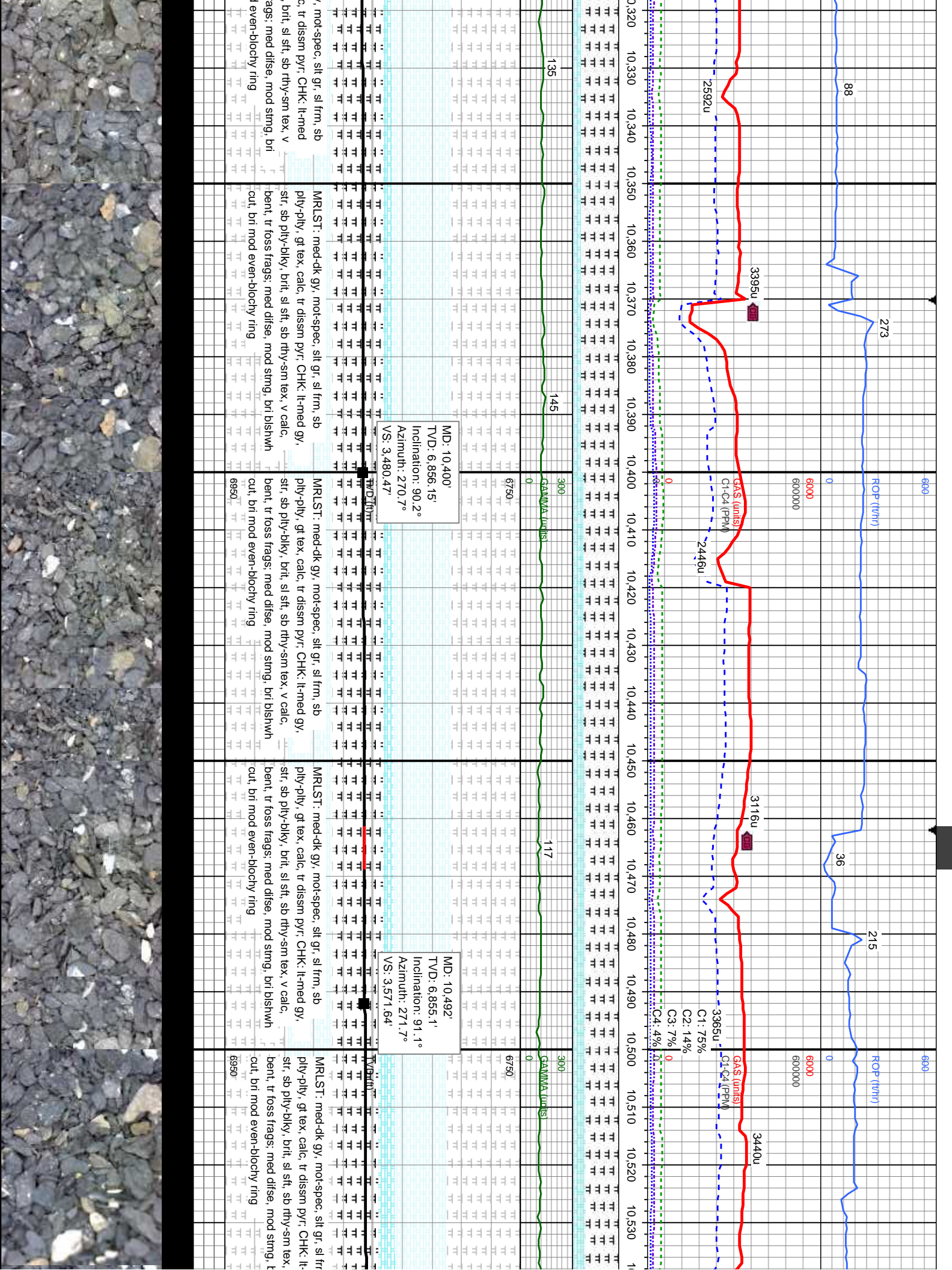


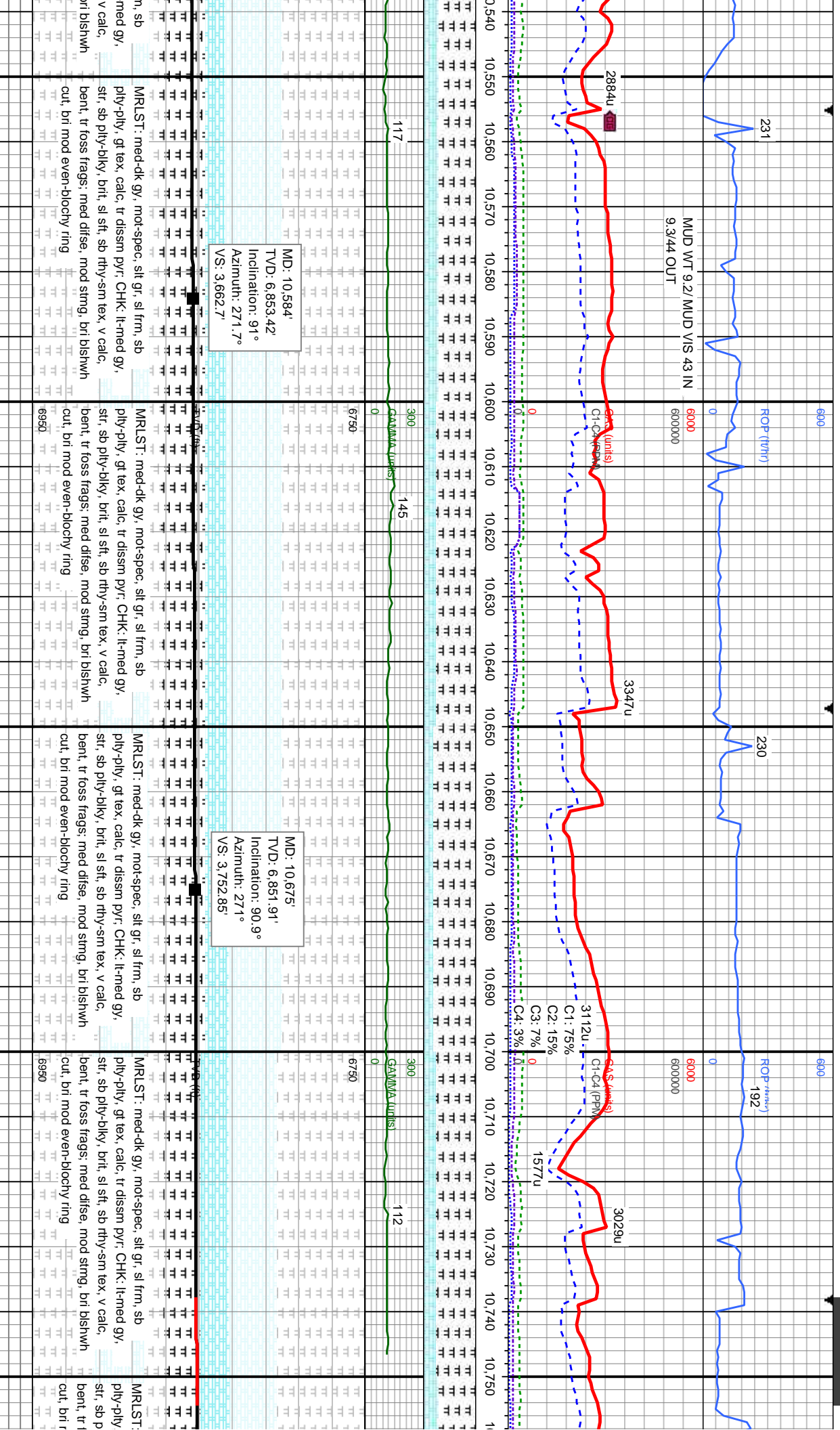


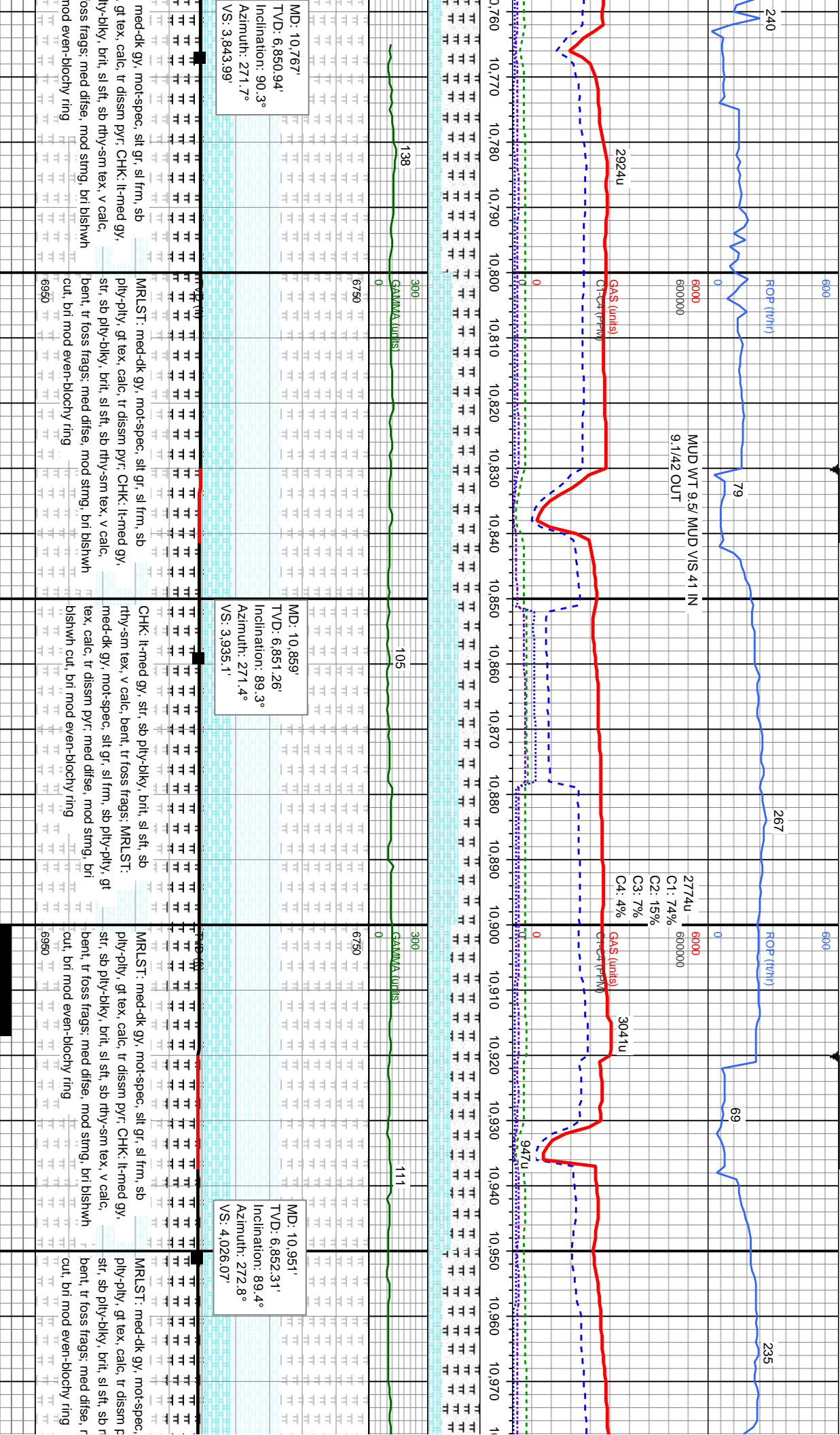


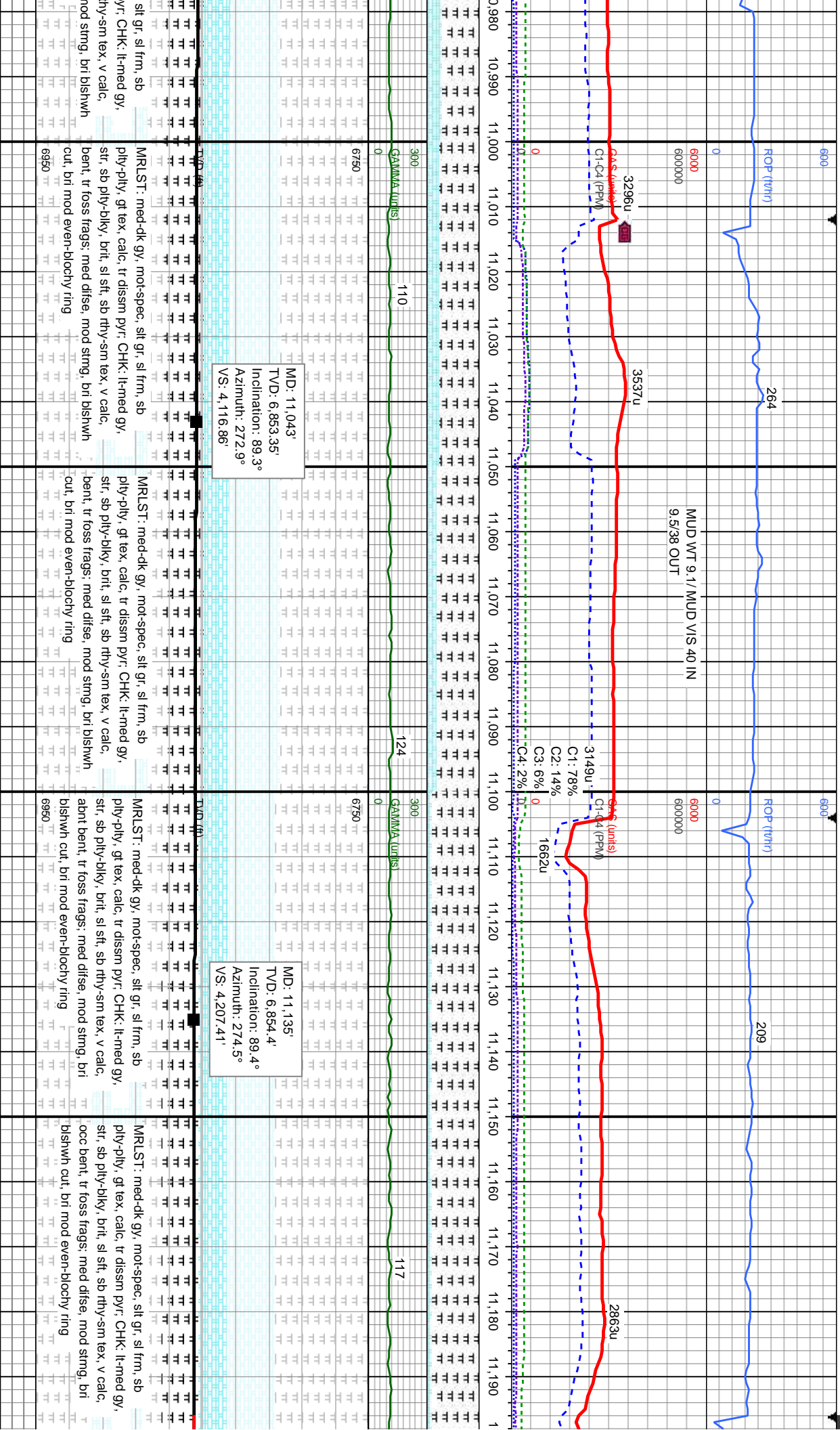












690

11/4/2015

MINDEPTH

ROP (twh)

6000 MUD WT 9.4/ MUD VIS 40 IN

2007 u

C1: 75%

C2: 15%

C3: 7%

C4: 3%

6000

6000000

690

ROP (twh)

70

0.75u

0

0

0

0

0

0

0

0

0

0

0

0

0

0

0

0

0

0

0

0

0

0

0

690

ROP (twh)

206

2546u

2592u

1670u

0

0

0

0

0

0

0

0

0

0

0

0

0

0

0

0

0

0

0

0

0

0

0

0

0

0

0

0

0

0

0

0

0

690

ROP (twh)

225

2567u

680u

0

0

0

0

0

0

0

0

0

0

0

0

0

0

0

0

0

0

0

0

0

0

0

0

0

0

0

0

0

0

0

0

0

0

MD: 11,226'
TVD: 6,855.35'
Inclination: 89.4°
Azimuth: 271.7°
VS: 4,297.14'

MD: 11,318'
TVD: 6,855.99'
Inclination: 89.8°
Azimuth: 267.1°
VS: 4,388.63'

MD: 11,414'
TVD: 6,856.1'
Inclination: 89.8°
Azimuth: 267.1°
VS: 4,484.44'

MRLST: med-dk gy, mot-spec, slt gr, sl frm, sb
ply-pty, gt tex, calc, tr dissim pyr, CHK: lt-med gy,
str, sb ply-bkly, brlt, sl stl, sb rthy-sm tex, v calc, r
occ bent, tr foss frags, med difse, mod stmg, bri bishwh
cut, bri mod even-blochry ring

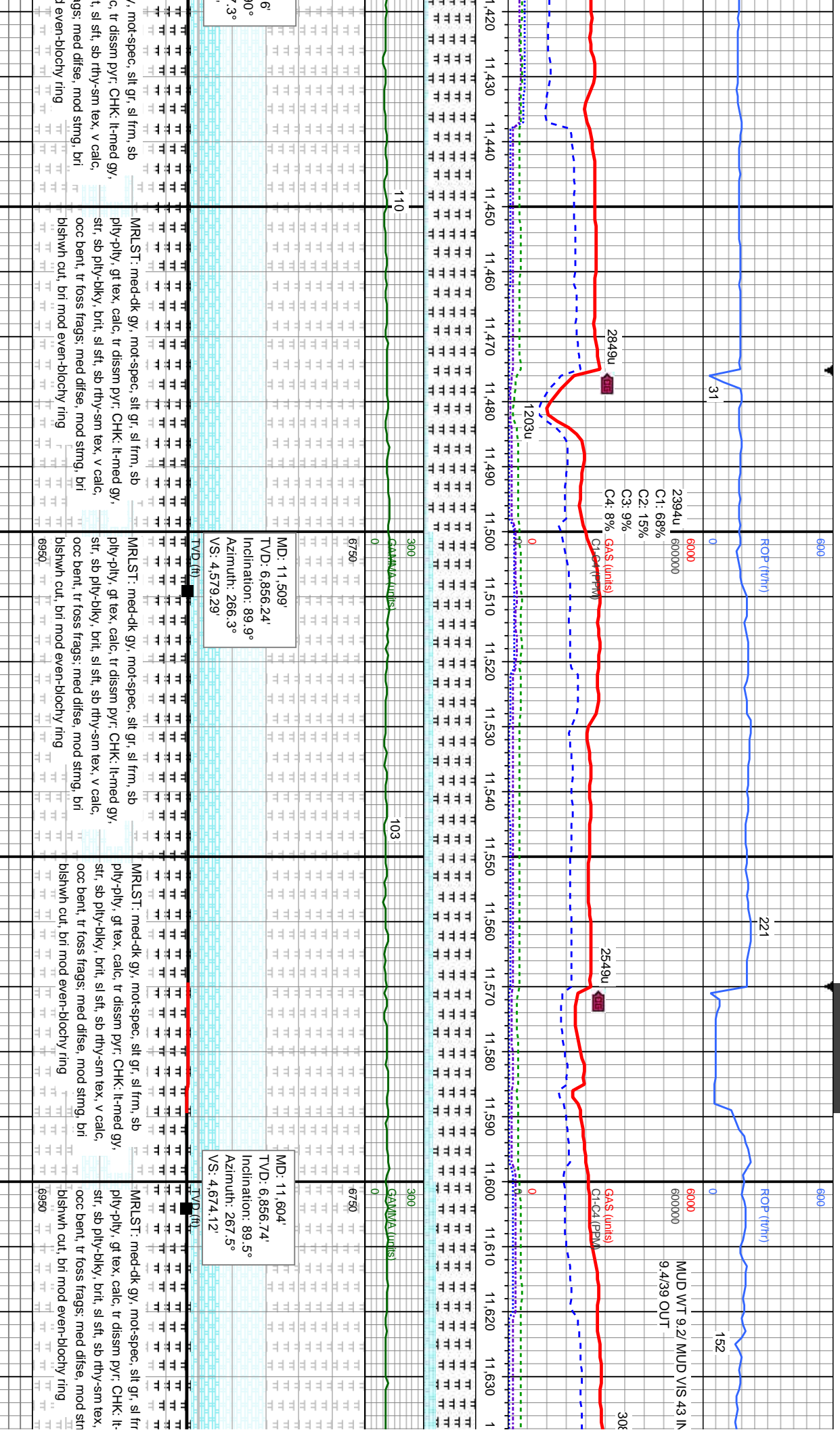
MRLST: med-dk gy, mot-spec, slt gr, sl frm, sb
ply-pty, gt tex, calc, tr dissim pyr, CHK: lt-med gy,
str, sb ply-bkly, brlt, sl stl, sb rthy-sm tex, v calc,
occ bent, tr foss frags, med difse, mod stmg, bri
bishwh cut, bri mod even-blochry ring

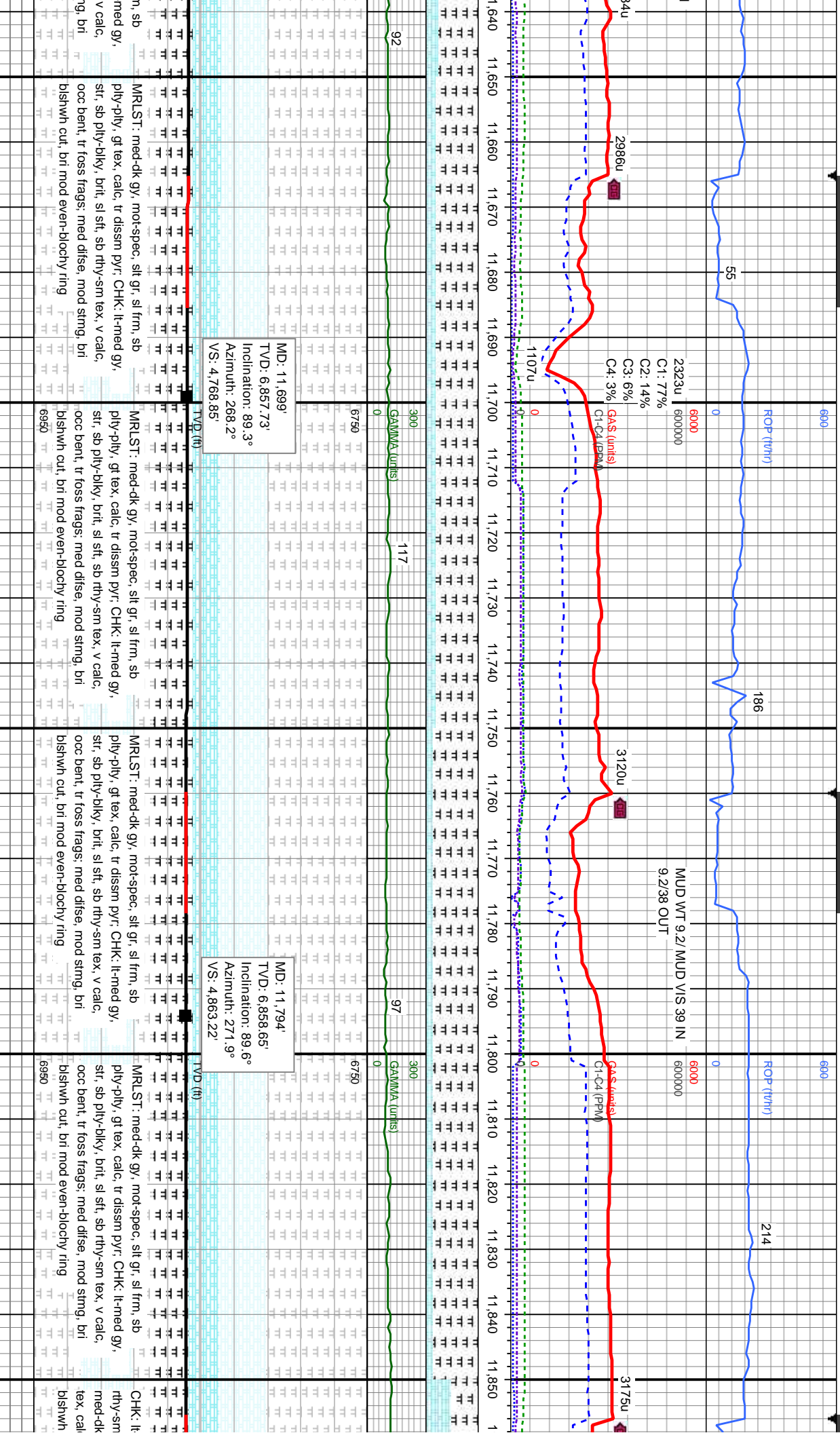
MRLST: med-dk gy, mot-spec, slt gr, sl frm, sb
ply-pty, gt tex, calc, tr dissim pyr, CHK: lt-med gy,
str, sb ply-bkly, brlt, sl stl, sb rthy-sm tex, v calc,
occ bent, tr foss frags, med difse, mod stmg, bri
bishwh cut, bri mod even-blochry ring

MRLST: med-dk gy, mot-spec, slt gr, sl frm, sb
ply-pty, gt tex, calc, tr dissim pyr, CHK: lt-med gy,
str, sb ply-bkly, brlt, sl stl, sb rthy-sm tex, v calc,
occ bent, tr foss frags, med difse, mod stmg, bri
bishwh cut, bri mod even-blochry ring

MRLST: med-dk gy, mot-spec, slt gr, sl frm, sb
ply-pty, gt tex, calc, tr dissim pyr, CHK: lt-med gy,
str, sb ply-bkly, brlt, sl stl, sb rthy-sm tex, v calc,
occ bent, tr foss frags, med difse, mod stmg, bri
bishwh cut, bri mod even-blochry ring







med gy,
v calc,
occ bent, tr
foss frags,
mod difse,
mod string,
bri
blishwh cut,
bri mod even-blochy ring

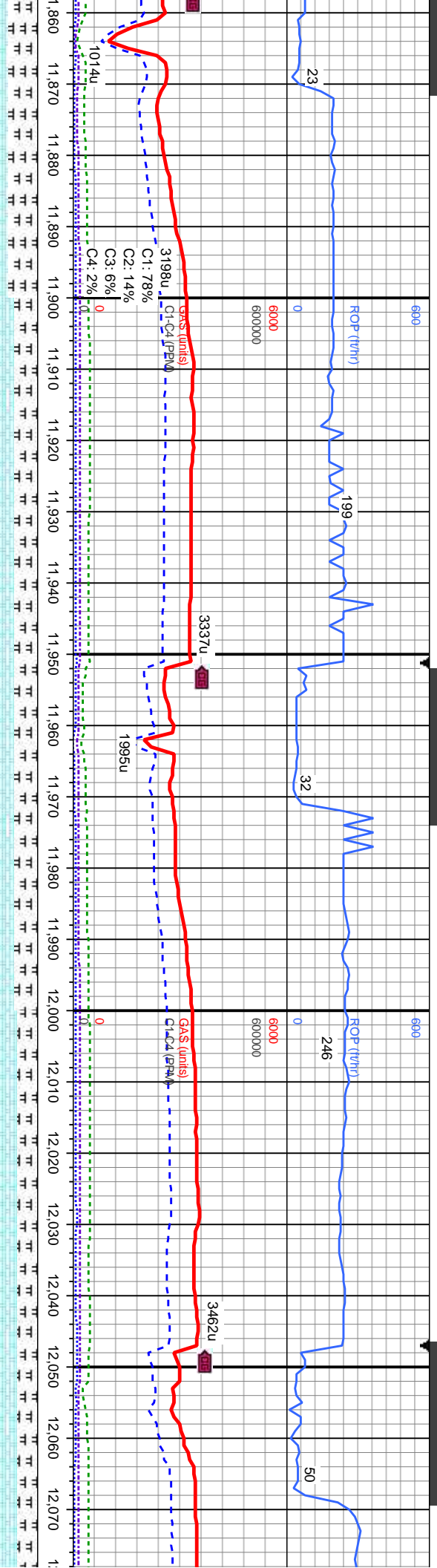
MR.LST: med-dk gy, mot-spec, slt gr, sl frm, sb
ply-pty, gt tex, calc, tr dissn pyr, CHK: lt-med gy,
str, sb ply-bkly, brlt, sl sft, sb rthy-sm tex, v calc,
occ bent, tr foss frags, mod difse, mod string, bri
blishwh cut, bri mod even-blochy ring

MR.LST: med-dk gy, mot-spec, slt gr, sl frm, sb
ply-pty, gt tex, calc, tr dissn pyr, CHK: lt-med gy,
str, sb ply-bkly, brlt, sl sft, sb rthy-sm tex, v calc,
occ bent, tr foss frags, mod difse, mod string, bri
blishwh cut, bri mod even-blochy ring

MR.LST: med-dk gy, mot-spec, slt gr, sl frm, sb
ply-pty, gt tex, calc, tr dissn pyr, CHK: lt-med gy,
str, sb ply-bkly, brlt, sl sft, sb rthy-sm tex, v calc,
occ bent, tr foss frags, mod difse, mod string, bri
blishwh cut, bri mod even-blochy ring

CHK: lt-med gy,
rthy-sm tex, v calc,
med-dk
blishwh





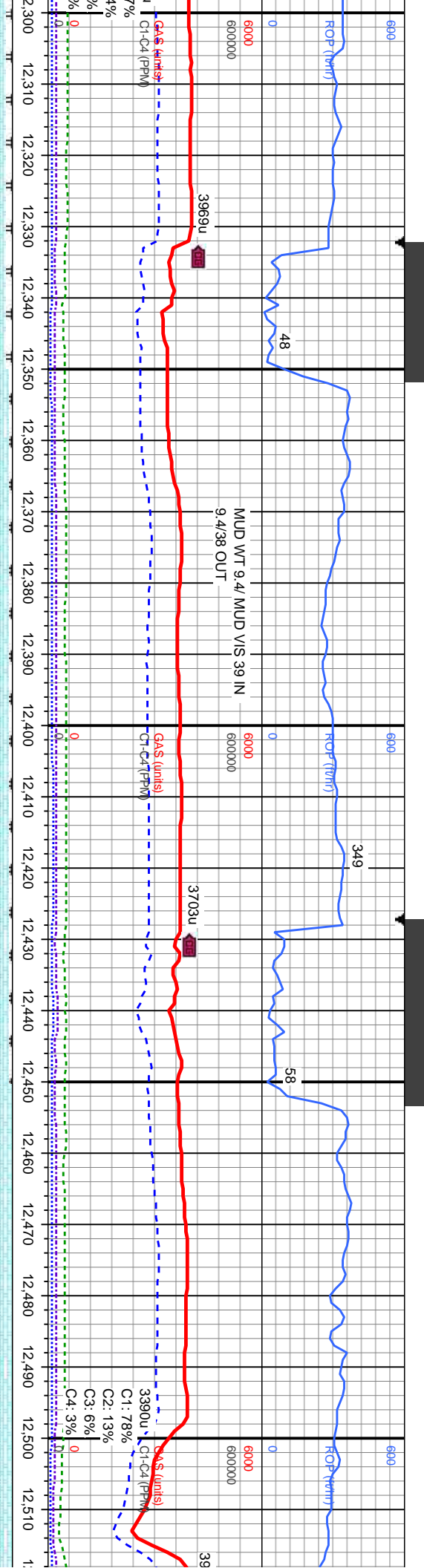
MD: 11,889'
TVD: 6,858.15'
Inclination: 91°
Azimuth: 272.1°
VS: 4,957.19'

MD: 11,985'
TVD: 6,855.89'
Inclination: 91.7°
Azimuth: 269.4°
VS: 5,052.4'

MD: 12
TVD: 6
Inclina
Azimut
VS: 5.1

TVD (ft)		TVD (ft)		TVD (ft)	
6750	6950	6750	6950	6750	6950
med gy, str, sb pily-biky, brit, sl sft, sb	med-dk gy, mot-spec, slt gr, sl frm, sb pily-pily, gt	med-dk gy, mot-spec, slt gr, sl frm, sb pily-pily, gt	med-dk gy, mot-spec, slt gr, sl frm, sb pily-pily, gt	med-dk gy, mot-spec, slt gr, sl frm, sb pily-pily, gt	med-dk gy, mot-spec, slt gr, sl frm, sb pily-pily, gt
tex, v calc, tr bent, foss frags: MRLST:	med-dk gy, mot-spec, slt gr, sl frm, sb pily-pily, gt	med-dk gy, mot-spec, slt gr, sl frm, sb pily-pily, gt	med-dk gy, mot-spec, slt gr, sl frm, sb pily-pily, gt	med-dk gy, mot-spec, slt gr, sl frm, sb pily-pily, gt	med-dk gy, mot-spec, slt gr, sl frm, sb pily-pily, gt
cut, bri mod even-blochy ring	med-dk gy, mot-spec, slt gr, sl frm, sb pily-pily, gt	med-dk gy, mot-spec, slt gr, sl frm, sb pily-pily, gt	med-dk gy, mot-spec, slt gr, sl frm, sb pily-pily, gt	med-dk gy, mot-spec, slt gr, sl frm, sb pily-pily, gt	med-dk gy, mot-spec, slt gr, sl frm, sb pily-pily, gt



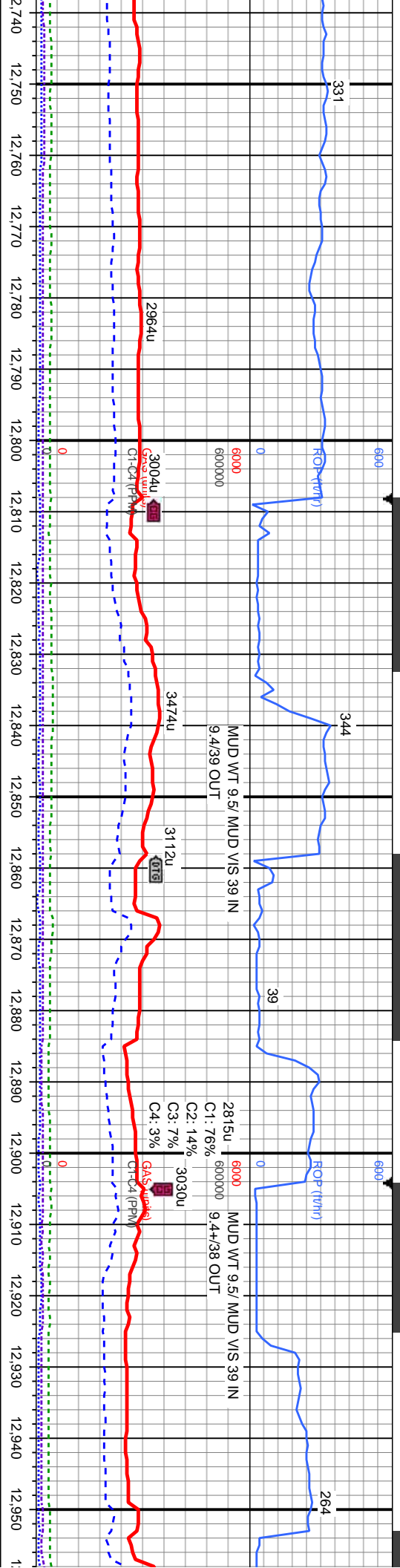


MD: 12.366'
TVD: 6,862.65'
Inclination: 90.4°
Azimuth: 266.3°
VS: 5.432.14'

MD: 12.461'
TVD: 6,862.16'
Inclination: 90.2°
Azimuth: 268.2°
VS: 5.526.94'

6750	300	6750	300	6750	300
GAMMA (units)	GAMMA (units)	GAMMA (units)	GAMMA (units)	GAMMA (units)	GAMMA (units)
0	68	0	55	0	0
CHK: lt-med gy, str, sb pily-biky, brit, sl sft, sb rthy-sm tex, v calc, tr bent; MRLST: med-dk gy, mot-spec, slt gr, sl frm, sb pily-pily, gt tex, calc, tr mod fast difse, mod fast sting, bri bishwh cut, bri mod even-blochy ring	CHK: lt-med gy, str, sb pily-biky, brit, sl sft, sb rthy-sm tex, v calc, tr bent; MRLST: med-dk gy, mot-spec, slt gr, sl frm, sb pily-pily, gt tex, calc, tr fos frags, med fast difse, mod fast sting, bri bishwh cut, bri mod even-blochy ring	CHK: lt-med gy, str, sb pily-biky, brit, sl sft, sb rthy-sm tex, v calc, tr bent; MRLST: med-dk gy, mot-spec, slt gr, sl frm, sb pily-pily, gt tex, calc, tr fos frags, med fast difse, mod fast sting, bri bishwh cut, bri mod even-blochy ring	CHK: lt-med gy, str, sb pily-biky, brit, sl sft, sb rthy-sm tex, v calc, tr bent; MRLST: med-dk gy, mot-spec, slt gr, sl frm, sb pily-pily, gt tex, calc, tr fos frags, med fast difse, mod fast sting, bri bishwh cut, bri mod even-blochy ring	CHK: lt-med gy, str, sb pily-biky, brit, sl sft, sb rthy-sm tex, v calc, tr bent; MRLST: med-dk gy, mot-spec, slt gr, sl frm, sb pily-pily, gt tex, calc, tr fos frags, med fast difse, mod fast sting, bri bishwh cut, bri mod even-blochy ring	CHK: lt-med gy, str, sb pily-biky, brit, sl sft, sb rthy-sm tex, v calc, tr bent; MRLST: med-dk gy, mot-spec, slt gr, sl frm, sb pily-pily, gt tex, calc, tr fos frags, med fast difse, mod fast sting, bri bishwh cut, bri mod even-blochy ring
6950		6950		6950	





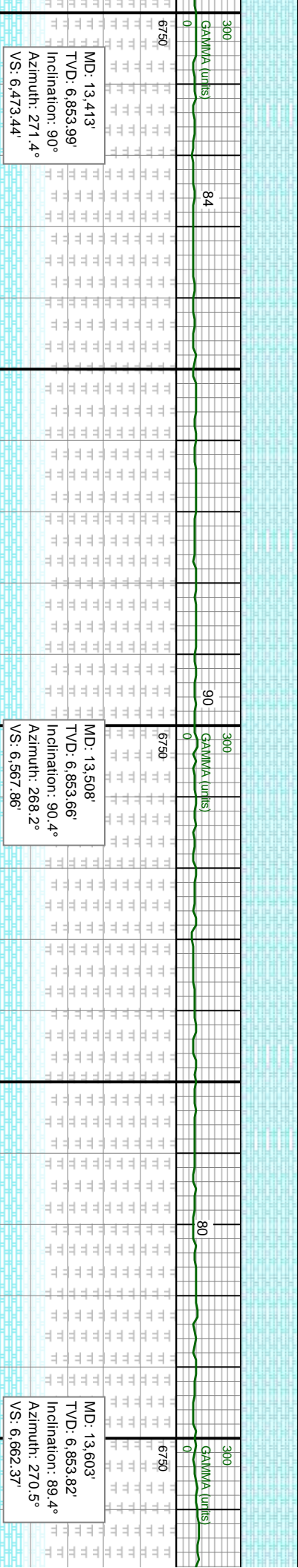
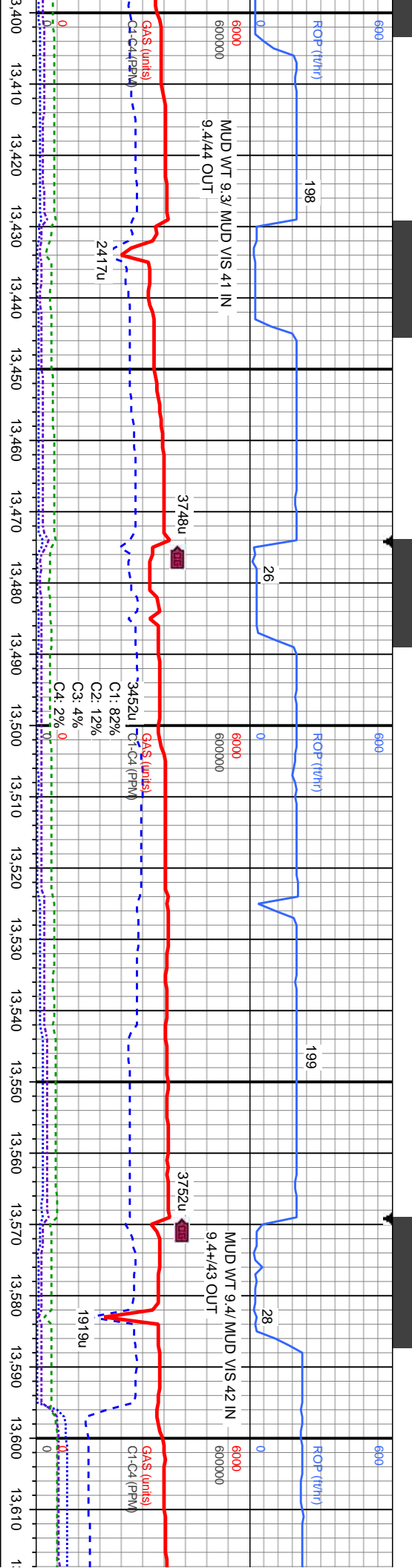
MD: 12.746'
TVD: 6.851.33'
Inclination: 89.6°
Azimuth: 264°
VS: 5.811.3'

MD: 12.842'
TVD: 6.852'
Inclination: 89.6°
Azimuth: 262°
VS: 5.907.29'

MD: 12.937'
TVD: 6.852.66'
Inclination: 89.6°
Azimuth: 266.4°
VS: 6.002.26'

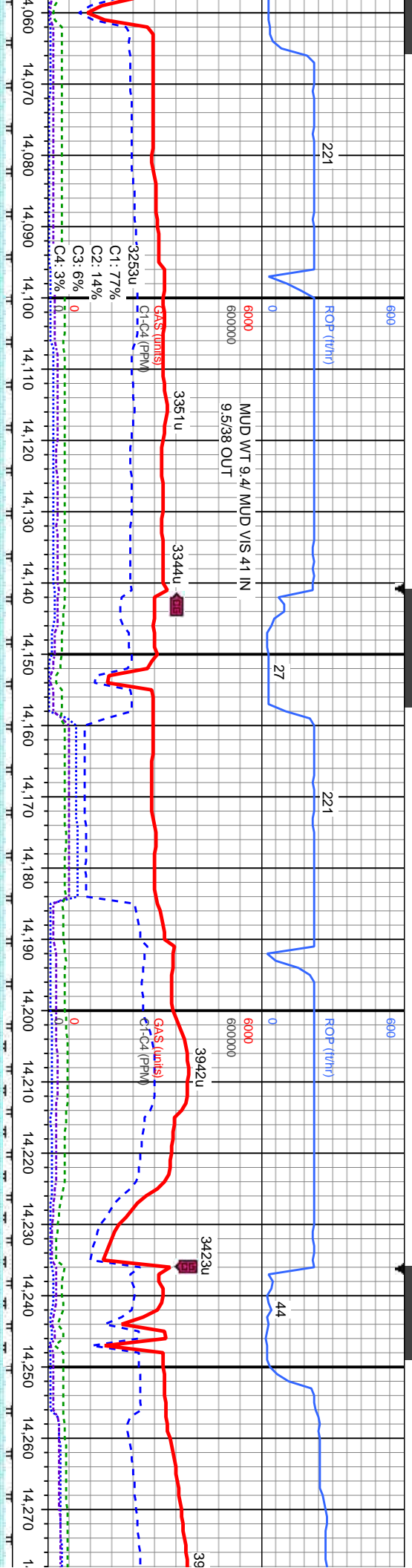
108	300	6750	104	300	6750	97
GAMMA (units)						
0						
CHK: lt-med gy, str, sb ply-bkly, brit, sl sft, sb						
rthy-sm tex, v calc, tr bent: MRLST: med-dk gy,						
mot-spec, slt gr, sl frm, sb ply-ply, gt tex, calc, tr						
fos frags: med fast difse, mod fast sting, bri blshwh						
cut, bri mod even-blochy ring						
6950						





MD: 13.413 TVD: 6.853.99' Inclination: 90° Azimuth: 271.4° VS: 6.473.44'		CHK: It-med gy, str, sb pily-biky, brit, sl sft, sb rthy-sm tex, v calc, tr fos frags; med fast difse, mod fast stimg, bri blshwh cut, bri mod even-blochy ring
MD: 13.508 TVD: 6.853.66' Inclination: 90.4° Azimuth: 268.2° VS: 6.567.86'		CHK: It-med gy, str, sb pily-biky, brit, sl sft, sb rthy-sm tex, v calc, tr fos frags; tr bent, tr MRLST; med fast difse, mod fast stimg, bri blshwh cut, bri mod even-blochy ring
MD: 13.603 TVD: 6.853.82' Inclination: 89.4° Azimuth: 270.5° VS: 6.662.37'		CHK: It-med gy, str, sb pily-biky, brit, sl sft, sb rthy-sm tex, v calc, tr fos frags; tr bent, tr MRLST; med fast difse, mod fast stimg, bri blshwh cut, bri mod even-blochy ring





MD: 14,078'
TVD: 6,853.08'
Inclination: 87.5°
Azimuth: 269.2°
VS: 7.134.87'

MD: 14,173'
TVD: 6,856.65'
Inclination: 89.4°
Azimuth: 268.9°
VS: 7.229.39'

MD: 14,268'
TVD: 6,857.64'
Inclination: 88.2°
Azimuth: 268.5°
VS: 7.323.99'

62	300	GA(MMA (units)	99	92	300	GA(MMA (units)	87	87	300	GA(MMA (units)
6750	6750	6750	6750	6750	6750	6750	6750	6750	6750	6750
med gy, str, sb ply-bkly, brit, sl sft, sb	med gy, str, sb ply-bkly, brit, sl sft, sb	med gy, str, sb ply-bkly, brit, sl sft, sb	med gy, str, sb ply-bkly, brit, sl sft, sb	med gy, str, sb ply-bkly, brit, sl sft, sb	med gy, str, sb ply-bkly, brit, sl sft, sb	med gy, str, sb ply-bkly, brit, sl sft, sb	med gy, str, sb ply-bkly, brit, sl sft, sb	med gy, str, sb ply-bkly, brit, sl sft, sb	med gy, str, sb ply-bkly, brit, sl sft, sb	med gy, str, sb ply-bkly, brit, sl sft, sb
tex, v calc, tr bent; MRLST: med-dk gy,	tex, v calc, tr bent; MRLST: med-dk gy,	tex, v calc, tr bent; MRLST: med-dk gy,	tex, v calc, tr bent; MRLST: med-dk gy,	tex, v calc, tr bent; MRLST: med-dk gy,	tex, v calc, tr bent; MRLST: med-dk gy,	tex, v calc, tr bent; MRLST: med-dk gy,	tex, v calc, tr bent; MRLST: med-dk gy,	tex, v calc, tr bent; MRLST: med-dk gy,	tex, v calc, tr bent; MRLST: med-dk gy,	tex, v calc, tr bent; MRLST: med-dk gy,
c, slt gr, sl frm, sb ply-pty, gt tex, calc, tr	c, slt gr, sl frm, sb ply-pty, gt tex, calc, tr	c, slt gr, sl frm, sb ply-pty, gt tex, calc, tr	c, slt gr, sl frm, sb ply-pty, gt tex, calc, tr	c, slt gr, sl frm, sb ply-pty, gt tex, calc, tr	c, slt gr, sl frm, sb ply-pty, gt tex, calc, tr	c, slt gr, sl frm, sb ply-pty, gt tex, calc, tr	c, slt gr, sl frm, sb ply-pty, gt tex, calc, tr	c, slt gr, sl frm, sb ply-pty, gt tex, calc, tr	c, slt gr, sl frm, sb ply-pty, gt tex, calc, tr	c, slt gr, sl frm, sb ply-pty, gt tex, calc, tr
s, med fast difse, mod fast stmg, bri blshwh	s, med fast difse, mod fast stmg, bri blshwh	s, med fast difse, mod fast stmg, bri blshwh	s, med fast difse, mod fast stmg, bri blshwh	s, med fast difse, mod fast stmg, bri blshwh	s, med fast difse, mod fast stmg, bri blshwh	s, med fast difse, mod fast stmg, bri blshwh	s, med fast difse, mod fast stmg, bri blshwh	s, med fast difse, mod fast stmg, bri blshwh	s, med fast difse, mod fast stmg, bri blshwh	s, med fast difse, mod fast stmg, bri blshwh
cut, bri mod even-blochy ring	cut, bri mod even-blochy ring	cut, bri mod even-blochy ring	cut, bri mod even-blochy ring	cut, bri mod even-blochy ring	cut, bri mod even-blochy ring	cut, bri mod even-blochy ring	cut, bri mod even-blochy ring	cut, bri mod even-blochy ring	cut, bri mod even-blochy ring	cut, bri mod even-blochy ring
6950	6950	6950	6950	6950	6950	6950	6950	6950	6950	6950



