

Bayswater Exploration & Production, LLC

Well Name: **Carlson C-15-16HN**

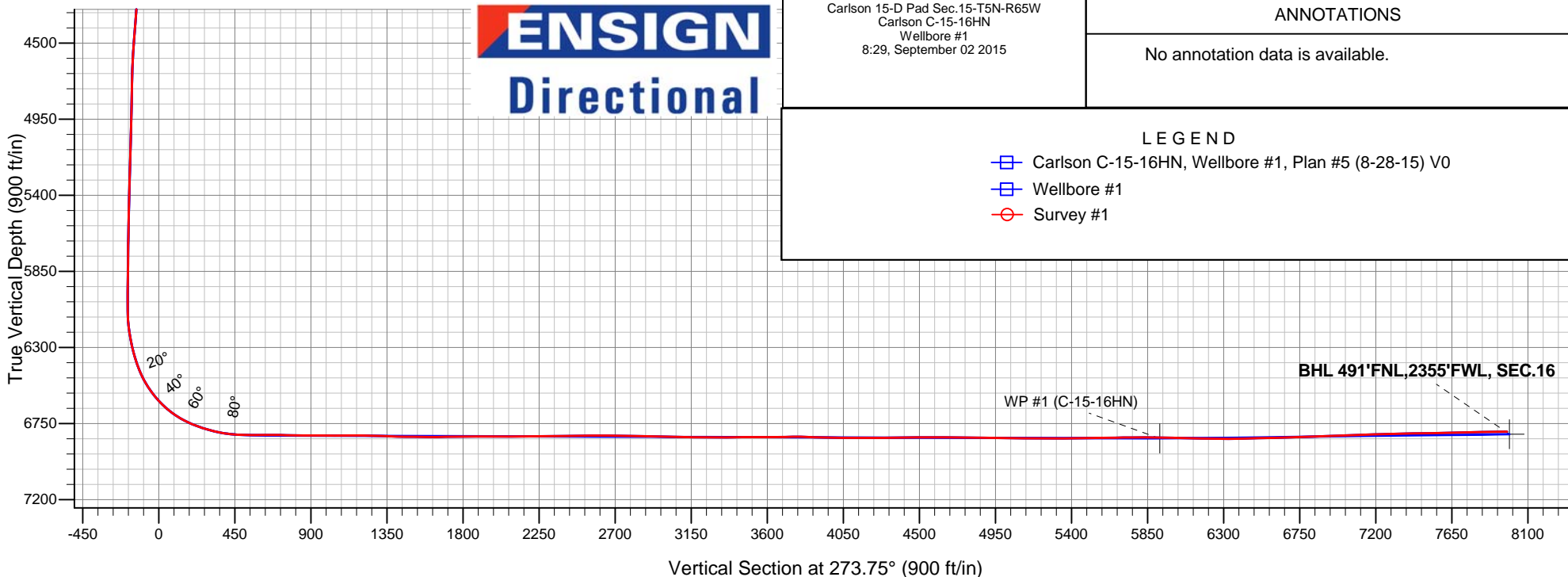
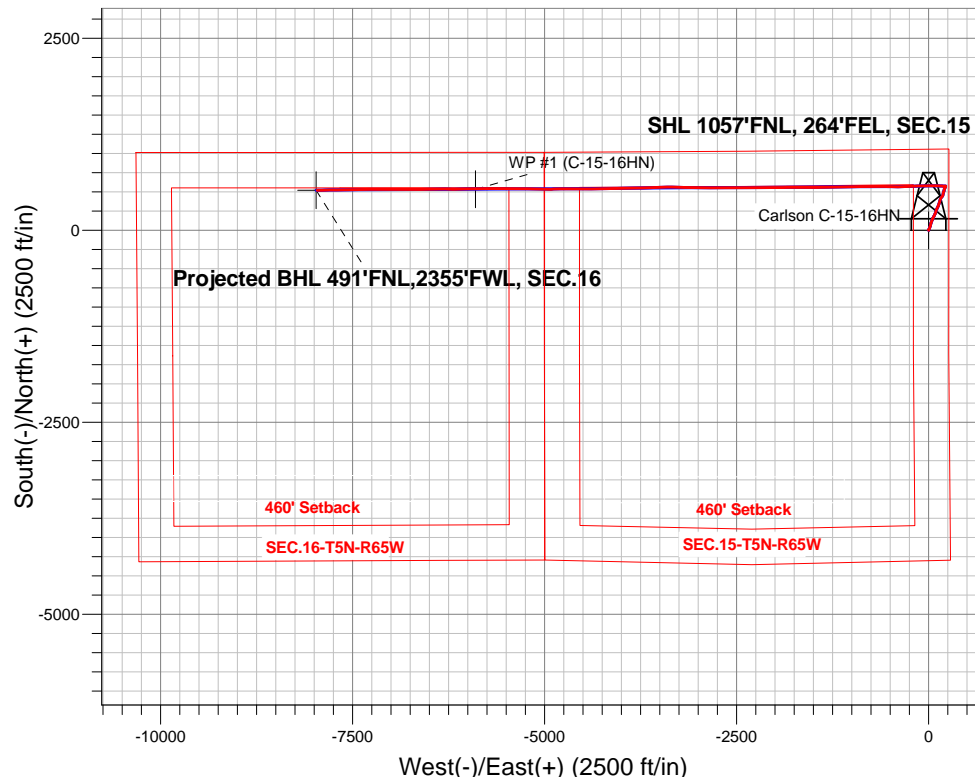
Surface Location: Carlson 15-D Pad Sec.15-T5N-R65W
North American Datum 1983 , US State Plane 1983 , Colorado Northern Zone

Ground Elevation: 4621.0

+N/-S	+E/-W	Northing	Easting	Latitude	Longitude	Slot
0.0	0.0	1391065.38	3239247.01	40.403695	-104.640916	
RKB - 22.5' WELL @ 4643.5ft (RKB - 22.5')						

FINAL SURVEY

Projected Bottom Hole Location
14752'MD 6798'TVD 521'N & 7959'W of SHL
90.9 degree Incl @ 268.9 degree AZM





Bayswater Exploration & Production, LLC

SEC.15-T5N-R65W

Carlson 15-D Pad Sec.15-T5N-R65W

Carlson C-15-16HN

Wellbore #1

Survey: Survey #1

Standard Survey Report

02 September, 2015



BAYSWATER
EXPLORATION & PRODUCTION, LLC

Company:	Bayswater Exploration & Production, LLC	Local Co-ordinate Reference:	Well Carlson C-15-16HN
Project:	SEC.15-T5N-R65W	TVD Reference:	WELL @ 4643.5ft (RKB - 22.5')
Site:	Carlson 15-D Pad Sec.15-T5N-R65W	MD Reference:	WELL @ 4643.5ft (RKB - 22.5')
Well:	Carlson C-15-16HN	North Reference:	True
Wellbore:	Wellbore #1	Survey Calculation Method:	Minimum Curvature
Design:	Wellbore #1	Database:	EDMNEW

Project	SEC.15-T5N-R65W, Weld County, Colorado		
Map System:	US State Plane 1983	System Datum:	Mean Sea Level
Geo Datum:	North American Datum 1983		Using Well Reference Point
Map Zone:	Colorado Northern Zone		Using geodetic scale factor

Site	Carlson 15-D Pad Sec.15-T5N-R65W				
Site Position:		Northing:	1,391,065.25 ft	Latitude:	40.403695
From:	Lat/Long	Easting:	3,239,231.97 ft	Longitude:	-104.640970
Position Uncertainty:	0.0 ft	Slot Radius:	"	Grid Convergence:	0.56 °

Well	Carlson C-15-16HN					
Well Position	+N/-S	0.0 ft	Northing:	1,391,065.38 ft	Latitude:	40.403695
	+E/-W	0.0 ft	Easting:	3,239,247.01 ft	Longitude:	-104.640916
Position Uncertainty		0.0 ft	Wellhead Elevation:	ft	Ground Level:	4,621.0 ft

Wellbore	Wellbore #1				
Magnetics	Model Name	Sample Date	Declination (°)	Dip Angle (°)	Field Strength (nT)
	IGRF2010	7/30/2015	8.24	66.93	52,713

Design	Wellbore #1				
Audit Notes:					
Version:	1.0	Phase:	ACTUAL	Tie On Depth:	0.0
Vertical Section:	Depth From (TVD) (ft)	+N/-S (ft)	+E/-W (ft)	Direction (°)	
	0.0	0.0	0.0	273.75	

Survey Program	Date	9/2/2015			
From (ft)	To (ft)	Survey (Wellbore)	Tool Name	Description	
160.0	14,752.0	Survey #1 (Wellbore #1)	MWD	MWD - Standard	

Survey										
Measured Depth (ft)	Inclination (°)	Azimuth (°)	Vertical Depth (ft)	+N/-S (ft)	+E/-W (ft)	Vertical Section (ft)	Dogleg Rate (°/100ft)	Build Rate (°/100ft)	Turn Rate (°/100ft)	
0.0	0.00	0.00	0.0	0.0	0.0	0.0	0.00	0.00	0.00	
1.0	0.01	39.90	1.0	0.0	0.0	0.0	0.50	0.50	0.00	
SHL 1057'FNL, 264'FEL, SEC.15										
160.0	0.80	39.90	160.0	0.9	0.7	-0.7	0.50	0.50	0.00	
253.0	0.90	54.00	253.0	1.8	1.7	-1.6	0.25	0.11	15.16	
345.0	0.70	0.70	345.0	2.8	2.3	-2.1	0.80	-0.22	-57.93	
437.0	1.20	10.00	437.0	4.3	2.5	-2.2	0.57	0.54	10.11	
529.0	0.50	352.10	529.0	5.6	2.6	-2.2	0.80	-0.76	-19.46	
621.0	0.90	29.70	620.9	6.7	2.9	-2.5	0.64	0.43	40.87	
713.0	1.70	14.60	712.9	8.6	3.6	-3.0	0.94	0.87	-16.41	
795.0	2.40	29.00	794.9	11.3	4.7	-4.0	1.05	0.85	17.56	
927.0	2.30	28.30	926.8	16.0	7.3	-6.3	0.08	-0.08	-0.53	
1,022.0	3.30	24.40	1,021.6	20.2	9.4	-8.0	1.07	1.05	-4.11	

Company:	Bayswater Exploration & Production, LLC	Local Co-ordinate Reference:	Well Carlson C-15-16HN
Project:	SEC.15-T5N-R65W	TVD Reference:	WELL @ 4643.5ft (RKB - 22.5')
Site:	Carlson 15-D Pad Sec.15-T5N-R65W	MD Reference:	WELL @ 4643.5ft (RKB - 22.5')
Well:	Carlson C-15-16HN	North Reference:	True
Wellbore:	Wellbore #1	Survey Calculation Method:	Minimum Curvature
Design:	Wellbore #1	Database:	EDMNEW

Survey

Measured Depth (ft)	Inclination (°)	Azimuth (°)	Vertical Depth (ft)	+N/-S (ft)	+E/-W (ft)	Vertical Section (ft)	Dogleg Rate (°/100ft)	Build Rate (°/100ft)	Turn Rate (°/100ft)
1,117.0	4.70	19.30	1,116.4	26.4	11.8	-10.0	1.52	1.47	-5.37
1,209.0	5.60	20.90	1,208.0	34.1	14.6	-12.4	0.99	0.98	1.74
1,301.0	6.90	19.30	1,299.5	43.5	18.1	-15.2	1.43	1.41	-1.74
1,394.0	7.80	17.60	1,391.7	54.8	21.8	-18.2	1.00	0.97	-1.83
1,486.0	7.30	13.30	1,482.9	66.4	25.1	-20.7	0.82	-0.54	-4.67
1,578.0	8.30	13.50	1,574.1	78.6	27.9	-22.8	1.09	1.09	0.22
1,670.0	7.10	16.70	1,665.2	90.5	31.1	-25.2	1.38	-1.30	3.48
1,762.0	7.30	15.40	1,756.5	101.6	34.3	-27.6	0.28	0.22	-1.41
1,854.0	7.00	22.00	1,847.8	112.4	38.0	-30.5	0.95	-0.33	7.17
1,946.0	7.40	24.80	1,939.1	123.0	42.6	-34.4	0.58	0.43	3.04
2,039.0	6.50	17.40	2,031.4	133.4	46.6	-37.8	1.36	-0.97	-7.96
2,131.0	6.90	26.70	2,122.8	143.4	50.7	-41.2	1.26	0.43	10.11
2,223.0	5.10	13.20	2,214.3	152.3	54.1	-44.0	2.47	-1.96	-14.67
2,315.0	6.20	30.60	2,305.8	160.5	57.6	-46.9	2.20	1.20	18.91
2,407.0	6.30	31.40	2,397.3	169.1	62.7	-51.5	0.14	0.11	0.87
2,499.0	7.10	22.00	2,488.7	178.7	67.5	-55.7	1.47	0.87	-10.22
2,594.0	8.10	28.10	2,582.8	190.0	72.8	-60.3	1.35	1.05	6.42
2,690.0	10.40	24.80	2,677.6	203.9	79.7	-66.2	2.46	2.40	-3.44
2,785.0	10.60	22.30	2,771.0	219.7	86.6	-72.0	0.52	0.21	-2.63
2,880.0	8.60	19.00	2,864.6	234.5	92.2	-76.7	2.18	-2.11	-3.47
2,975.0	7.70	16.90	2,958.7	247.4	96.4	-80.0	1.00	-0.95	-2.21
3,070.0	6.40	14.90	3,053.0	258.6	99.6	-82.5	1.39	-1.37	-2.11
3,166.0	6.00	27.60	3,148.4	268.2	103.3	-85.5	1.48	-0.42	13.23
3,261.0	7.00	27.20	3,242.8	277.7	108.2	-89.8	1.05	1.05	-0.42
3,356.0	8.10	23.00	3,337.0	289.0	113.5	-94.3	1.29	1.16	-4.42
3,452.0	5.60	20.40	3,432.3	299.7	117.8	-97.9	2.62	-2.60	-2.71
3,547.0	4.70	22.30	3,526.9	307.6	120.8	-100.5	0.96	-0.95	2.00
3,642.0	5.50	29.00	3,621.5	315.2	124.5	-103.7	1.05	0.84	7.05
3,737.0	8.40	20.20	3,715.8	325.7	129.1	-107.6	3.24	3.05	-9.26
3,832.0	11.10	17.40	3,809.4	340.9	134.3	-111.7	2.88	2.84	-2.95
3,927.0	11.30	16.20	3,902.6	358.6	139.6	-115.9	0.32	0.21	-1.26
4,023.0	10.30	15.30	3,996.9	375.9	144.5	-119.6	1.06	-1.04	-0.94
4,118.0	7.70	14.00	4,090.7	390.3	148.3	-122.4	2.75	-2.74	-1.37
4,213.0	8.20	23.90	4,184.8	402.6	152.6	-125.9	1.53	0.53	10.42
4,308.0	8.10	33.20	4,278.9	414.4	159.0	-131.5	1.39	-0.11	9.79
4,403.0	7.70	34.40	4,373.0	425.3	166.2	-138.1	0.46	-0.42	1.26
4,499.0	8.40	38.80	4,468.0	436.1	174.3	-145.4	0.97	0.73	4.58
4,594.0	9.00	24.60	4,561.9	448.2	181.7	-152.0	2.34	0.63	-14.95
4,689.0	8.70	17.20	4,655.8	461.8	186.9	-156.3	1.24	-0.32	-7.79
4,784.0	7.70	9.50	4,749.8	475.0	190.1	-158.6	1.56	-1.05	-8.11
4,879.0	6.80	9.10	4,844.1	486.8	192.0	-159.8	0.95	-0.95	-0.42
4,974.0	7.60	20.00	4,938.3	498.3	195.1	-162.1	1.66	0.84	11.47
5,069.0	7.30	19.00	5,032.5	509.9	199.2	-165.4	0.34	-0.32	-1.05
5,164.0	6.60	10.30	5,126.8	521.0	202.1	-167.6	1.33	-0.74	-9.16
5,259.0	6.00	17.00	5,221.3	531.1	204.5	-169.4	1.00	-0.63	7.05
5,354.0	5.90	26.90	5,315.8	540.2	208.2	-172.5	1.08	-0.11	10.42
5,449.0	5.30	18.60	5,410.3	548.7	211.8	-175.5	1.06	-0.63	-8.74
5,545.0	4.70	15.30	5,505.9	556.7	214.3	-177.4	0.69	-0.63	-3.44
5,640.0	3.60	22.00	5,600.7	563.2	216.4	-179.1	1.26	-1.16	7.05
5,735.0	2.40	16.30	5,695.6	567.9	218.1	-180.5	1.30	-1.26	-6.00
5,830.0	1.20	40.20	5,790.5	570.6	219.3	-181.5	1.46	-1.26	25.16
5,925.0	1.10	40.10	5,885.5	572.0	220.5	-182.7	0.11	-0.11	-0.11
6,021.0	0.70	49.00	5,981.5	573.1	221.6	-183.6	0.44	-0.42	9.27
6,069.0	0.70	62.60	6,029.5	573.4	222.0	-184.1	0.35	0.00	28.33

Company:	Bayswater Exploration & Production, LLC	Local Co-ordinate Reference:	Well Carlson C-15-16HN
Project:	SEC.15-T5N-R65W	TVD Reference:	WELL @ 4643.5ft (RKB - 22.5')
Site:	Carlson 15-D Pad Sec.15-T5N-R65W	MD Reference:	WELL @ 4643.5ft (RKB - 22.5')
Well:	Carlson C-15-16HN	North Reference:	True
Wellbore:	Wellbore #1	Survey Calculation Method:	Minimum Curvature
Design:	Wellbore #1	Database:	EDMNEW

Survey

Measured Depth (ft)	Inclination (°)	Azimuth (°)	Vertical Depth (ft)	+N/-S (ft)	+E/-W (ft)	Vertical Section (ft)	Dogleg Rate (°/100ft)	Build Rate (°/100ft)	Turn Rate (°/100ft)
6,116.0	0.40	312.30	6,076.5	573.7	222.2	-184.2	1.95	-0.64	-234.68
6,164.0	3.30	277.50	6,124.4	574.0	220.7	-182.7	6.21	6.04	-72.50
6,211.0	6.30	274.00	6,171.3	574.3	216.8	-178.8	6.41	6.38	-7.45
6,259.0	8.90	272.40	6,218.9	574.7	210.4	-172.4	5.43	5.42	-3.33
6,306.0	11.40	270.70	6,265.1	574.9	202.1	-164.1	5.36	5.32	-3.62
6,354.0	13.60	270.50	6,312.0	575.0	191.8	-153.8	4.58	4.58	-0.42
6,402.0	16.30	272.60	6,358.3	575.3	179.4	-141.4	5.74	5.63	4.38
6,497.0	23.30	273.10	6,447.7	577.0	147.3	-109.2	7.37	7.37	0.53
6,592.0	32.40	269.80	6,531.6	577.9	103.0	-65.0	9.71	9.58	-3.47
6,640.0	37.20	270.00	6,571.0	577.8	75.6	-37.6	10.00	10.00	0.42
6,687.0	41.80	271.90	6,607.2	578.4	45.7	-7.8	10.12	9.79	4.04
6,735.0	46.10	270.20	6,641.8	578.9	12.4	25.5	9.29	8.96	-3.54
6,783.0	50.80	268.40	6,673.6	578.5	-23.5	61.3	10.19	9.79	-3.75
6,831.0	56.40	268.40	6,702.1	577.4	-62.1	99.7	11.67	11.67	0.00
6,878.0	61.70	269.10	6,726.3	576.5	-102.4	139.9	11.35	11.28	1.49
6,926.0	66.20	267.90	6,747.3	575.4	-145.5	182.8	9.64	9.38	-2.50
6,973.0	69.90	267.30	6,764.9	573.6	-189.0	226.1	7.96	7.87	-1.28
7,021.0	72.60	267.70	6,780.3	571.6	-234.5	271.3	5.68	5.63	0.83
7,068.0	75.70	268.20	6,793.2	570.0	-279.6	316.3	6.67	6.60	1.06
7,116.0	79.20	267.90	6,803.6	568.4	-326.4	362.9	7.32	7.29	-0.63
7,163.0	82.70	269.10	6,811.0	567.2	-372.8	409.1	7.86	7.45	2.55
7,200.0	85.80	270.20	6,814.7	566.9	-409.6	445.8	8.89	8.38	2.97
7,277.0	89.30	271.70	6,818.0	568.2	-486.6	522.7	4.94	4.55	1.95
7,290.0	89.70	271.67	6,818.1	568.6	-499.6	535.7	3.05	3.04	-0.22
LPL 490°FNL & 764°FEL, SEC.15									
7,323.0	90.70	271.60	6,818.0	569.5	-532.5	568.6	3.05	3.04	-0.22
7,418.0	89.20	270.50	6,818.1	571.3	-627.5	663.5	1.96	-1.58	-1.16
7,511.0	89.30	269.50	6,819.3	571.3	-720.5	756.3	1.08	0.11	-1.08
7,607.0	89.40	268.60	6,820.4	569.7	-816.5	852.0	0.94	0.10	-0.94
7,701.0	90.00	268.60	6,820.9	567.4	-910.5	945.6	0.64	0.64	0.00
7,795.0	89.90	270.30	6,820.9	566.5	-1,004.4	1,039.3	1.81	-0.11	1.81
7,889.0	90.80	268.70	6,820.4	565.7	-1,098.4	1,133.1	1.95	0.96	-1.70
7,983.0	88.40	269.10	6,821.0	563.9	-1,192.4	1,226.7	2.59	-2.55	0.43
8,077.0	87.80	268.40	6,824.1	561.8	-1,286.3	1,320.3	0.98	-0.64	-0.74
8,171.0	88.30	269.10	6,827.3	559.8	-1,380.3	1,413.9	0.91	0.53	0.74
8,266.0	90.00	268.70	6,828.8	558.0	-1,475.2	1,508.5	1.84	1.79	-0.42
8,360.0	89.60	270.20	6,829.1	557.0	-1,569.2	1,602.3	1.65	-0.43	1.60
8,454.0	90.70	270.70	6,828.8	557.8	-1,663.2	1,696.1	1.29	1.17	0.53
8,545.0	90.50	269.50	6,827.9	557.9	-1,754.2	1,786.9	1.34	-0.22	-1.32
8,637.0	90.40	270.20	6,827.2	557.7	-1,846.2	1,878.7	0.77	-0.11	0.76
8,728.0	89.30	268.60	6,827.4	556.8	-1,937.2	1,969.4	2.13	-1.21	-1.76
8,819.0	91.00	270.70	6,827.2	556.2	-2,028.2	2,060.2	2.97	1.87	2.31
8,911.0	90.40	269.10	6,826.0	556.0	-2,120.2	2,152.0	1.86	-0.65	-1.74
9,003.0	90.40	269.50	6,825.4	554.9	-2,212.2	2,243.7	0.43	0.00	0.43
9,095.0	90.40	270.30	6,824.8	554.8	-2,304.2	2,335.5	0.87	0.00	0.87
9,186.0	90.50	269.80	6,824.0	554.8	-2,395.2	2,426.3	0.56	0.11	-0.55
9,278.0	91.40	270.20	6,822.5	554.8	-2,487.1	2,518.1	1.07	0.98	0.43
9,369.0	90.40	268.90	6,821.1	554.1	-2,578.1	2,608.8	1.80	-1.10	-1.43
9,461.0	89.40	269.50	6,821.2	552.8	-2,670.1	2,700.5	1.27	-1.09	0.65
9,552.0	87.80	270.00	6,823.5	552.4	-2,761.1	2,791.3	1.84	-1.76	0.55
9,644.0	88.70	270.90	6,826.3	553.2	-2,853.0	2,883.1	1.38	0.98	0.98
9,736.0	88.90	270.30	6,828.2	554.1	-2,945.0	2,974.9	0.69	0.22	-0.65
9,827.0	89.00	270.50	6,829.9	554.8	-3,036.0	3,065.8	0.25	0.11	0.22
9,919.0	89.80	270.90	6,830.8	555.9	-3,128.0	3,157.6	0.97	0.87	0.43

Company:	Bayswater Exploration & Production, LLC	Local Co-ordinate Reference:	Well Carlson C-15-16HN
Project:	SEC.15-T5N-R65W	TVD Reference:	WELL @ 4643.5ft (RKB - 22.5')
Site:	Carlson 15-D Pad Sec.15-T5N-R65W	MD Reference:	WELL @ 4643.5ft (RKB - 22.5')
Well:	Carlson C-15-16HN	North Reference:	True
Wellbore:	Wellbore #1	Survey Calculation Method:	Minimum Curvature
Design:	Wellbore #1	Database:	EDMNEW

Survey

Measured Depth (ft)	Inclination (°)	Azimuth (°)	Vertical Depth (ft)	+N/-S (ft)	+E/-W (ft)	Vertical Section (ft)	Dogleg Rate (°/100ft)	Build Rate (°/100ft)	Turn Rate (°/100ft)
10,011.0	89.30	271.70	6,831.6	558.0	-3,220.0	3,249.5	1.03	-0.54	0.87
10,103.0	90.30	271.70	6,831.9	560.7	-3,311.9	3,341.5	1.09	1.09	0.00
10,194.0	91.00	269.60	6,830.8	561.7	-3,402.9	3,432.3	2.43	0.77	-2.31
10,285.0	89.80	267.90	6,830.2	559.7	-3,493.9	3,523.0	2.29	-1.32	-1.87
10,377.0	90.30	268.40	6,830.1	556.8	-3,585.8	3,614.5	0.77	0.54	0.54
10,470.0	91.00	267.70	6,829.1	553.6	-3,678.8	3,707.1	1.06	0.75	-0.75
10,561.0	89.20	268.20	6,828.9	550.4	-3,769.7	3,797.6	2.05	-1.98	0.55
10,653.0	87.80	268.20	6,831.3	547.5	-3,861.6	3,889.1	1.52	-1.52	0.00
10,745.0	88.90	268.60	6,834.0	544.9	-3,953.5	3,980.7	1.27	1.20	0.43
10,836.0	90.00	268.70	6,834.8	542.8	-4,044.5	4,071.3	1.21	1.21	0.11
10,928.0	90.00	270.20	6,834.8	541.9	-4,136.5	4,163.1	1.63	0.00	1.63
11,019.0	90.10	269.30	6,834.8	541.5	-4,227.5	4,253.8	1.00	0.11	-0.99
11,111.0	90.60	269.10	6,834.2	540.2	-4,319.5	4,345.6	0.59	0.54	-0.22
11,203.0	91.10	268.90	6,832.8	538.6	-4,411.5	4,437.2	0.59	0.54	-0.22
11,297.0	89.70	269.80	6,832.2	537.5	-4,505.5	4,530.9	1.77	-1.49	0.96
11,391.0	89.70	270.50	6,832.7	537.8	-4,599.4	4,624.8	0.74	0.00	0.74
11,485.0	90.20	270.90	6,832.8	538.9	-4,693.4	4,718.6	0.68	0.53	0.43
11,580.0	89.60	268.00	6,832.9	538.0	-4,788.4	4,813.3	3.12	-0.63	-3.05
11,674.0	89.10	268.70	6,834.0	535.3	-4,882.4	4,906.9	0.92	-0.53	0.74
11,768.0	89.00	270.90	6,835.6	535.0	-4,976.4	5,000.7	2.34	-0.11	2.34
11,862.0	88.80	270.20	6,837.4	535.9	-5,070.3	5,094.5	0.77	-0.21	-0.74
11,956.0	90.20	271.60	6,838.2	537.3	-5,164.3	5,188.4	2.11	1.49	1.49
12,051.0	90.10	271.90	6,837.9	540.2	-5,259.3	5,283.3	0.33	-0.11	0.32
12,145.0	90.60	270.30	6,837.4	542.0	-5,353.3	5,377.2	1.78	0.53	-1.70
12,239.0	90.60	271.20	6,836.4	543.3	-5,447.2	5,471.1	0.96	0.00	0.96
12,333.0	90.80	270.20	6,835.2	544.4	-5,541.2	5,565.0	1.08	0.21	-1.06
12,428.0	91.00	269.30	6,833.7	544.0	-5,636.2	5,659.7	0.97	0.21	-0.95
12,522.0	90.00	269.10	6,832.9	542.7	-5,730.2	5,753.4	1.08	-1.06	-0.21
12,616.0	90.10	269.10	6,832.8	541.2	-5,824.2	5,847.1	0.11	0.11	0.00
12,691.6	89.30	268.94	6,833.2	539.9	-5,899.7	5,922.4	1.08	-1.06	-0.21
WP #1 (C-15-16HN)									
12,710.0	89.10	268.90	6,833.5	539.6	-5,918.2	5,940.8	1.08	-1.06	-0.21
12,805.0	88.50	268.70	6,835.5	537.6	-6,013.1	6,035.4	0.67	-0.63	-0.21
12,899.0	88.80	268.70	6,837.7	535.5	-6,107.1	6,129.0	0.32	0.32	0.00
12,993.0	88.60	270.70	6,839.8	535.0	-6,201.0	6,222.7	2.14	-0.21	2.13
13,087.0	90.70	270.00	6,840.4	535.5	-6,295.0	6,316.6	2.35	2.23	-0.74
13,181.0	90.90	269.60	6,839.1	535.2	-6,389.0	6,410.3	0.48	0.21	-0.43
13,275.0	91.70	269.80	6,836.9	534.7	-6,483.0	6,504.1	0.88	0.85	0.21
13,369.0	91.10	268.70	6,834.7	533.5	-6,577.0	6,597.8	1.33	-0.64	-1.17
13,463.0	92.10	269.80	6,832.0	532.3	-6,670.9	6,691.4	1.58	1.06	1.17
13,557.0	91.70	269.10	6,828.9	531.4	-6,764.9	6,785.1	0.86	-0.43	-0.74
13,651.0	91.80	270.30	6,826.0	530.9	-6,858.8	6,878.8	1.28	0.11	1.28
13,745.0	92.40	270.90	6,822.6	531.9	-6,952.7	6,972.6	0.90	0.64	0.64
13,840.0	92.20	270.70	6,818.8	533.2	-7,047.7	7,067.4	0.30	-0.21	-0.21
13,934.0	91.90	269.80	6,815.4	533.6	-7,141.6	7,161.2	1.01	-0.32	-0.96
14,028.0	91.30	269.10	6,812.8	532.7	-7,235.5	7,254.9	0.98	-0.64	-0.74
14,122.0	91.10	268.20	6,810.8	530.5	-7,329.5	7,348.5	0.98	-0.21	-0.96
14,216.0	91.30	269.10	6,808.9	528.3	-7,423.5	7,442.1	0.98	0.21	0.96
14,311.0	90.80	268.90	6,807.1	526.6	-7,518.4	7,536.8	0.57	-0.53	-0.21
14,405.0	91.50	270.00	6,805.2	525.7	-7,612.4	7,630.5	1.39	0.74	1.17
14,499.0	91.50	269.30	6,802.8	525.1	-7,706.4	7,724.2	0.74	0.00	-0.74
14,593.0	91.30	269.10	6,800.5	523.8	-7,800.3	7,817.9	0.30	-0.21	-0.21
14,687.0	90.90	268.90	6,798.7	522.2	-7,894.3	7,911.5	0.48	-0.43	-0.21
14,752.0	90.90	268.90	6,797.6	520.9	-7,959.3	7,976.3	0.00	0.00	0.00

Company:	Bayswater Exploration & Production, LLC	Local Co-ordinate Reference:	Well Carlson C-15-16HN
Project:	SEC.15-T5N-R65W	TVD Reference:	WELL @ 4643.5ft (RKB - 22.5')
Site:	Carlson 15-D Pad Sec.15-T5N-R65W	MD Reference:	WELL @ 4643.5ft (RKB - 22.5')
Well:	Carlson C-15-16HN	North Reference:	True
Wellbore:	Wellbore #1	Survey Calculation Method:	Minimum Curvature
Design:	Wellbore #1	Database:	EDMNEW

Survey

Measured Depth (ft)	Inclination (°)	Azimuth (°)	Vertical Depth (ft)	+N/-S (ft)	+E/-W (ft)	Vertical Section (ft)	Dogleg Rate (°/100ft)	Build Rate (°/100ft)	Turn Rate (°/100ft)
BHL 490'FNL,2341'FWL, SEC.16									

Design Targets

Target Name - hit/miss target - Shape	Dip Angle (°)	Dip Dir. (°)	TVD (ft)	+N/-S (ft)	+E/-W (ft)	Northing (ft)	Easting (ft)	Latitude	Longitude
SHL 1057'FNL, 264'FI - survey hits target center - Point	0.00	0.00	1.0	0.0	0.0	1,391,065.39	3,239,247.01	40.403695	-104.640916
BHL 490'FNL,2341'FV - survey misses target center by 21.7ft at 14752.0ft MD (6797.6 TVD, 520.9 N, -7959.3 E) - Point	0.00	0.00	6,813.5	522.3	-7,974.0	1,391,510.35	3,231,268.62	40.405125	-104.669548
WP #1 (C-15-16HN) - survey misses target center by 8.0ft at 12691.6ft MD (6833.2 TVD, 539.9 N, -5899.8 E) - Point	0.00	0.00	6,838.5	533.9	-5,899.6	1,391,542.08	3,233,342.76	40.405159	-104.662099

Checked By: _____ Approved By: _____ Date: _____