

**ANADARKO PETROLEUM CORP - EBUS
DO NOT MAIL - PO BOX 4995
THE WOODLANDS, Texas**

Brotemarkle 4C-13HZ

Xtreme 6

Post Job Summary **Cement Intermediate Casing**

Date Prepared: 4/18/2014
Version: 1

Service Supervisor: BARRAS, JOSEPH

Submitted by: PRUDHOMME, JOSHUA

HALLIBURTON

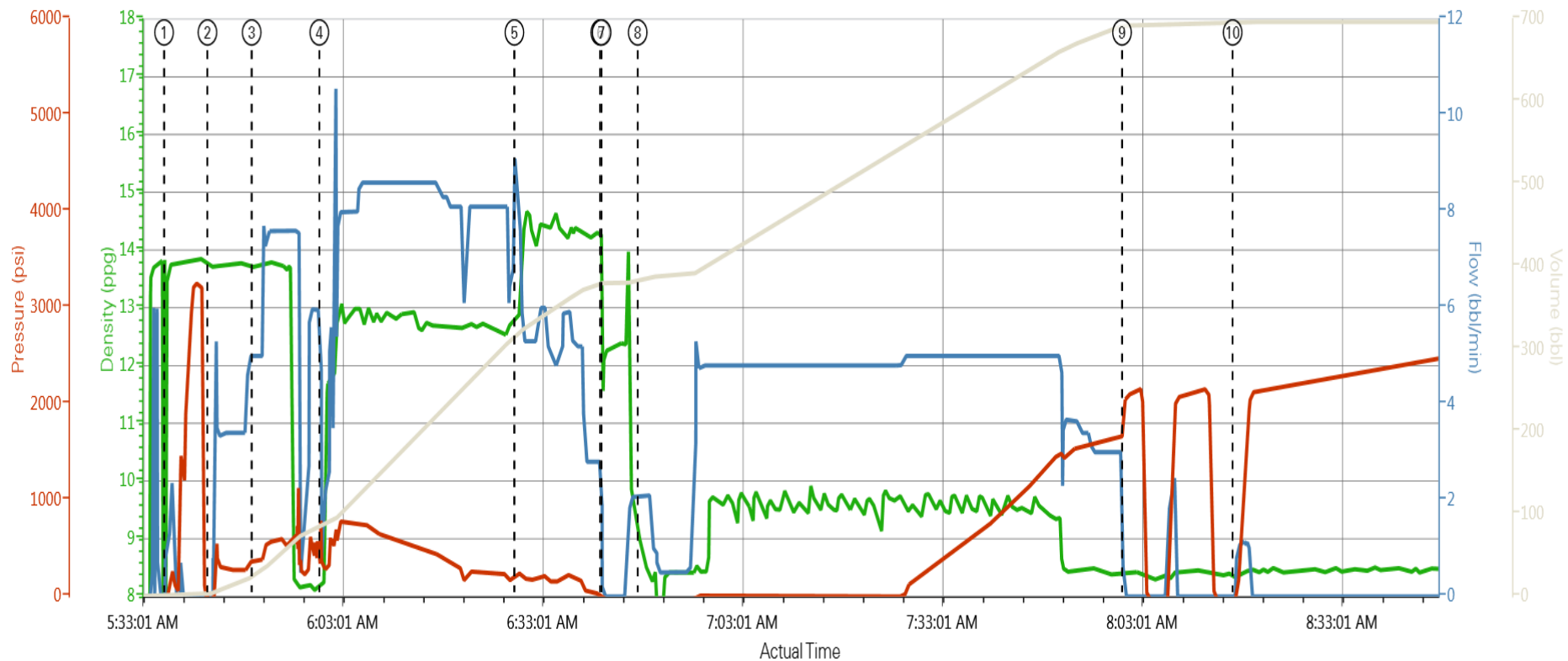
Pumping Schedule

Stage /Plug #	Fluid #	Fluid Type	Fluid Name	Surface Density lbm/gal	Avg Rate bbl/min	Surface Volume	Downhole Volume
1	1	Spacer	Water Spacer	8.34	3.5	20.0 bbl	20.0 bbl
1	2	Spacer	Mud Flush	8.40	3.5	40.0 bbl	40.0 bbl
1	3	Spacer	Water Spacer	8.34	7.0	20.0 bbl	20.0 bbl
1	4	Cement Slurry	12.7# EconoCem B1 Lead	12.7	8.0	620.0 sacks	620.0 sacks
1	5	Cement Slurry	14.4# FracCem Tail	14.4	5.0	210.0 sacks	210.0 sacks

HALLIBURTON

Data Acquisition

ANADARKO BROTEMARKLE 4C-13HZ 7IN



DH Density (ppg) Comb Pump Rate (bbl/min) PS Pump Press (psi) Comb Pump Total (bbl)

- | | | | |
|----------------------------------|--|--|----------------------------|
| ① Start Job 13.55;1;-14;2.3 | ④ Pump Lead Cement 8.12;1;267;37 | ⑦ Drop Top Plug 12.27;0;-38;380.1 | ⑩ Other 8.36;0;-41;694.2 |
| ② Pump Spacer 1 13.75;0;-32;3.8 | ⑤ Pump Tail Cement 12.84;8.2;233;317.9 | ⑧ Pump Displacement 8.93;2.1;-39;384.1 | ⑪ End Job 8.41;0;-41;696.4 |
| ③ Pump Spacer 2 13.69;5;395;26.4 | ⑥ Shutdown 11.86;0;-24;380.1 | ⑨ Bump Plug 8.44;0;2055;892.1 | |

Service Supervisor Reports

Job Log

Date/Time	Chart #	Activity Code	Pump Rate	Cum Vol	Pump	Pressure (psig)	Comments
03/08/2014 01:10		Arrive at Location from Service Center					
03/08/2014 01:25		Rig-Up Equipment					
03/08/2014 03:15		Rig-Up Completed					
03/08/2014 04:30		Safety Meeting - Pre Job					
03/08/2014 05:35		Start Job					
03/08/2014 05:36		Test Lines					test lines to 3500 psi no visible leaks
03/08/2014 05:43		Pump Spacer 1	3.5	20		374.0	rig water
03/08/2014 05:50		Pump Spacer 2	3.5	40		380.0	rig water with mud flush
03/08/2014 05:58		Pump Spacer 1	7	20		379.0	rig water
03/08/2014 06:00		Pump Lead Cement	8	53		205.0	mixed with rig water @ 12.7 ppg 620 sks of econocem/1.89 yield/10.03 gal/sk
03/08/2014 06:30		Pump Tail Cement	5	208		462.0	mixed with rig water @ 14.7 ppg /210 sks of fraccem /1.4 yield /5.98 gal/sk
03/08/2014 06:43		Shutdown					
03/08/2014 06:44		Drop Top Plug					preloaded and witnessed by company man
03/08/2014 06:45		Pump Displacement	6	301		1678.0	rig mud @ 10.1 ppg with cement to surface @ 280 bbl into displacement
03/08/2014 08:00		Bump Plug	3			2080.0	
03/08/2014 08:05		Check Floats					floats did not hold flowing back consistent about a pencil size stream/shut in well with cement head
03/08/2014 08:20		Other					casing test for 30 min.
03/08/2014 08:45		End Job					
03/08/2014 08:50		Rig-Down Equipment					
03/08/2014 10:00		Return to Service Center from Job					

The Road to Excellence Starts with Safety

Sold To #: 300466	Ship To #: 3117159	Quote #:	Sales Order #: 901175805
Customer: ANADARKO PETROLEUM CORP - EBUS		Customer Rep: Xtreme 6, Xtreme 6	
Well Name: Brotemarkle		Well #: 4C-13HZ	API/UWI #: 05-123-36518
Field: WATTENBERG	City (SAP): PLATTEVILLE	County/Parish: Weld	State: Colorado
Contractor: Anadarko		Rig/Platform Name/Num: Xtreme 6	
Job Purpose: Cement Intermediate Casing			
Well Type: Development Well		Job Type: Cement Intermediate Casing	
Sales Person: GREGORY, JON		Srvc Supervisor: BARRAS, JOSEPH	MBU ID Emp #: 405168

Job Personnel

HES Emp Name	Exp Hrs	Emp #	HES Emp Name	Exp Hrs	Emp #	HES Emp Name	Exp Hrs	Emp #
ALVARADO, JOSE Angel	0.0	505918	BARRAS, JOSEPH Corey	0.0	405168	ROOD, TRAVIS James	0.0	561971
TORREY, SPENCER Kenneth	0.0	549837						

Equipment

HES Unit #	Distance-1 way	HES Unit #	Distance-1 way	HES Unit #	Distance-1 way	HES Unit #	Distance-1 way
10248053C	20 mile	10982754C	20 mile	11338223	20 mile	11362287C	20 mile
11527037	20 mile						

Job

Formation Name							
Formation Depth (MD)	Top	Bottom		Called Out	Date	Time	Time Zone
Form Type	BHST			On Location			
Job depth MD	7961. ft	Job Depth TVD	7500. ft	Job Started	08 - Mar - 2014	05:35	MST
Water Depth		Wk Ht Above Floor	5. ft	Job Completed	08 - Mar - 2014	08:45	MST
Perforation Depth (MD)	From	To		Departed Loc	08 - Mar - 2014	10:00	MST

Job Times

Fluid Data									
Stage/Plug #: 1									
Fluid #	Stage Type	Fluid Name	Qty	Qty uom	Mixing Density lbm/gal	Yield ft ³ /sk	Mix Fluid Gal/sk	Rate bbl/min	Total Mix Fluid Gal/sk
1	Water Spacer		20.0	bbl	8.34			3.5	
2	Mud Flush		40.0	bbl	8.4			3.5	
3	Water Spacer		20.0	bbl	8.34			7.0	
4	12.7# EconoCem B1 Lead	ECONOCEM (TM) SYSTEM (452992)	620	sacks	12.7	1.89	10.03	8.0	10.03
10.03 Gal		FRESH WATER							
5	14.4# FracCem Tail	FRACCEM (TM) SYSTEM (452963)	210	sacks	14.4	1.4	5.98	5.0	5.98
5.98 Gal		FRESH WATER							
Calculated Values		Pressures		Volumes					
Displacement		Shut In: Instant		Lost Returns		Cement Slurry		Pad	
Top Of Cement		5 Min		Cement Returns	80.0	Actual Displacement	301.0	Treatment	
Frac Gradient		15 Min		Spacers	21.0	Load and Breakdown		Total Job	
Rates									
Circulating		Mixing		Displacement		Avg. Job			
Cement Left In Pipe	Amount	0 ft	Reason	Shoe Joint					
Frac Ring # 1 @	ID	Frac ring # 2 @	ID	Frac Ring # 3 @	ID	Frac Ring # 4 @	ID		
The Information Stated Herein Is Correct				Customer Representative Signature					

